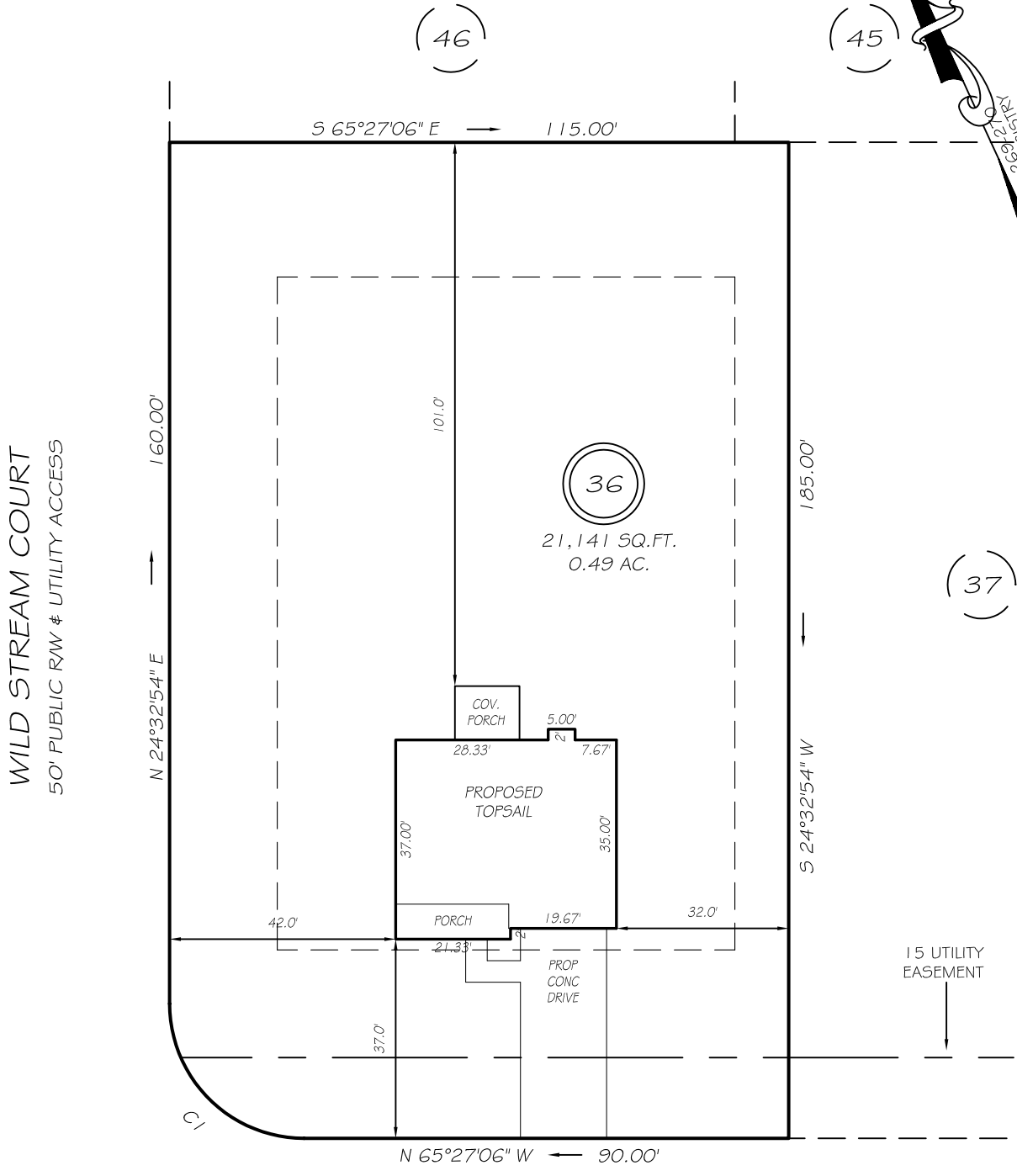
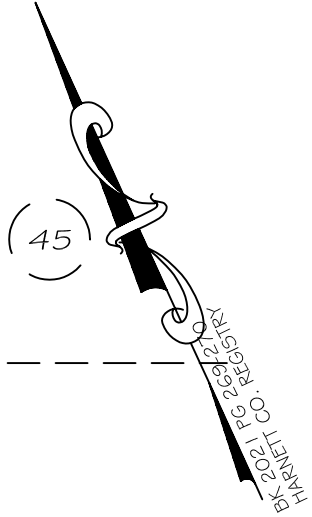


I, MICHAEL P. GRIFFIN, certify that under my direction and supervision this map was drawn from an actual field survey; that the error of closure of the survey as calculated by coordinates is 1: 10,000+; that the area shown hereon was calculated by coordinates.

Witness my hand and seal this day of MONTH 2021.



GLENMONT CREEK PLACE

IMPERVIOUS AREAS

HOUSE	1 608 SQ. FT.
DRIVE & WALKS	681 SQ. FT.
PATIO	000 SQ. FT.
TOTAL	2289 SQ. FT.
ALLOWED	5252 SQ. FT.

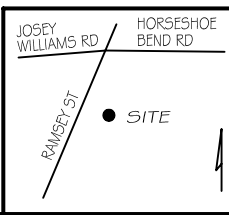
50' PUBLIC R/W & UTILITY ACCESS
 CI R=25.00' L=39.28' S20°27'06"E 35.36'

SETBACKS

FRONT	35'
REAR	25'
SIDE	10'
CORNER SIDE	20'

LEGEND

- EIP EXISTING IRON PIPE
- IP/S IRON PIPE SET
- R/W RIGHT OF WAY
- N/F NOW OR FORMERLY
- EIS EXISTING IRON STAKE
- FES FLARED END SECTION
- WM WATER METER
- CO CLEAN OUT
- FH FIRE HYDRANT
- CB CATCH BASIN



PRELIMINARY
 NOT FOR RECORDATION,
 SALES OR CONVEYANCE

GLS INC GRIFFIN LAND SURVEYING, INC.
 P. O. BOX 148
 FUQUAY-VARINA, NC 27526
 (919) - 567-1963

PLOT PLAN
 FOR
H & H HOMES
 WILLIAMS FARM
 LOT 36
 GLENMONT CREEK PLACE
 NORTH CAROLINA
 HARNETT CO. STEWART'S CREEK TOWNSHIP

DRAWN BY NMF	DATE 7/16/21
CHECKED BY MPG	SCALE 1" = 30'