



# TOPSAIL

NOTICE TO CONTRACTOR  
All construction must comply with current NC Building Codes and is subject to field inspection and verification.

APPROVED  
Limited building only review  
Permit holder responsible for full compliance with the code

08/16/2021

## TOPSAIL REVISION LIST - STRUCTURAL:

- 1.) ADDED JOIST SERIES AND SPACING TO SECOND FLOOR FRAMING AND CRAWL (10-17)
- 2.) REMOVED BEDROOM VAULTS AND BALLOON FRAMING (10-17)
- 3.) CHANGED STANDARD HEADER SIZE TO 2 x 6. CALLED OUT 2 x 10 WHERE NECESSARY (10-17)
- 4.) CHANGED TO (3) PLY GARAGE HEADERS (10-17)
- 5.) CODE UPDATE TO NCRC 2018 (1-19)

## TOPSAIL REVISION LIST - ARCHITECTURAL:

CHANGES ON 03-30-2020

1. CHANGED ALL CORNER BOARDS ON ELEVATIONS FROM 6" TO 4"
2. CHANGED NOTE FOR GARAGE LABEL ON ELEVATIONS
3. REMOVED GRIDS FROM ALL WINDOWS & DOORS ON SIDES AND REAR ELEVATIONS
4. UPDATED ALL COACH LIGHTS ON ELEVATIONS
5. REMOVED DUPLICATE DIMENSIONS AND LABELS FROM ALL ELEVATIONS
6. DIMENSIONED STONE/BRICK WATER TABLE HEIGHT
7. HATCHED 4" ROWLOCK ON WINDOWS IN ELEVATIONS WITH STONE AND BRICK
8. UPDATED STONE HATCH TO CURRENT HATCH
9. ADDED COLUMN DETAILS ON B-1 AND B-4 ELEVATIONS
10. REMOVED HARDWARE ON SHUTTERS ON ALL C ELEVATIONS. CHANGED TO SHOW B&B
11. SEPARATED ALL OPTIONS FROM BASE PLAN TO CORRESPONDING SHEETS
12. ADDED DIAGONAL DIMENSION ON SLAB INTERFACE PLAN
13. ADDED PLUMBING DROPS TO SLAB INTERFACE PLAN
14. ADDED CONDUIT IN KITCHEN OF THE SLAB INTERFACE PLAN
15. CHANGED COLUMN ON PATIO TO 8"x8"
16. CHANGED EXTERIOR WALLS FROM 2x6 TO 2x4 EXCEPT AT SHADED AREAS
19. REMOVED ALL 2x6 NOTES
20. UPDATED ALL INTERIOR ROOM DIMENSIONS
21. ADDED HOSE BIBS TO PLANS
22. UPDATED SQUARE FOOTAGES
23. ADDED SQUARE FOOTAGE WITH FULL BRICK VENEER
24. PATIO CHANGED TO 12'x10'
25. FLIPPED TUB AND REMOVED ACCESS AND NOTE FROM OWNER'S BATH 1
26. ADDED NOTE TO LAUNDRY
27. ADDED OPTIONAL FLOOR OUTLETS
28. REMOVED ALL OUTLETS ON ELECTRICAL PLAN (EXCEPT OPT. FLOOR OUTLETS)
29. REMOVED ALL TV OUTLETS
30. REMOVED ALL PHONE OUTLETS
31. SHOWED ALL CEILING FANS DASHED WITH NEW NOTE
32. ADDED CO2 DETECTORS
33. ADDED NEW ELECTRICAL KEY
34. CHANGED SWING OF SERVICE DOOR (7-8-20)
35. CHANGED LIGHT IN GARAGE FROM KEYLESS TO CEILING MOUNT (7-8-20)
36. CHANGED KITCHEN LIGHT FROM 2 BULB FLUORESCENT TO 3 BULB CEILING MOUNT (7-8-20)
37. CHANGED LIGHT OVER KITCHEN SINK TO 1 BULB CEILING MOUNT (7-8-20)
38. REMOVED LIGHT IN SECONDARY BATH OVER TUB/SHOWER COMB (7-8-20)

Inventory Marked



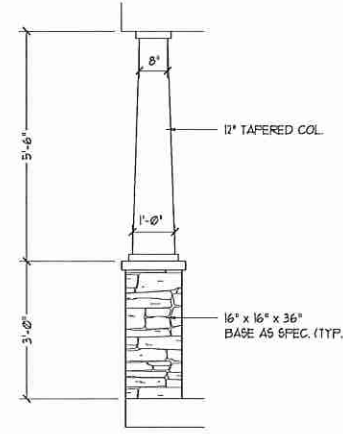
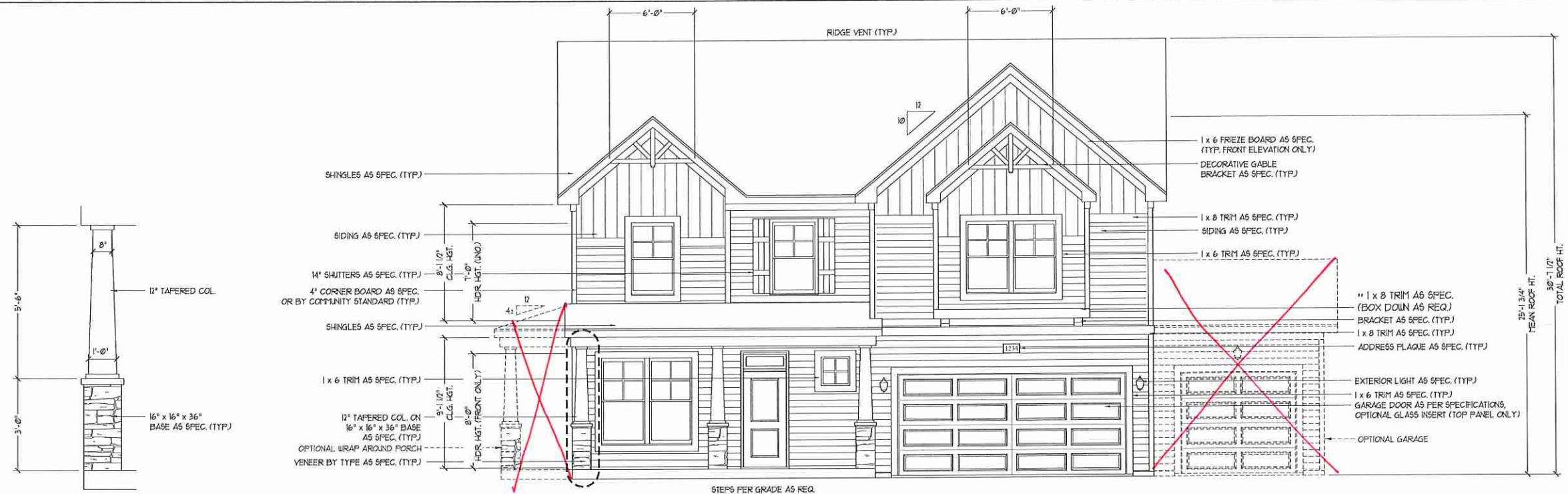
COVER SHEET

H&H HOMES  
TOPSAIL

WMF 000047

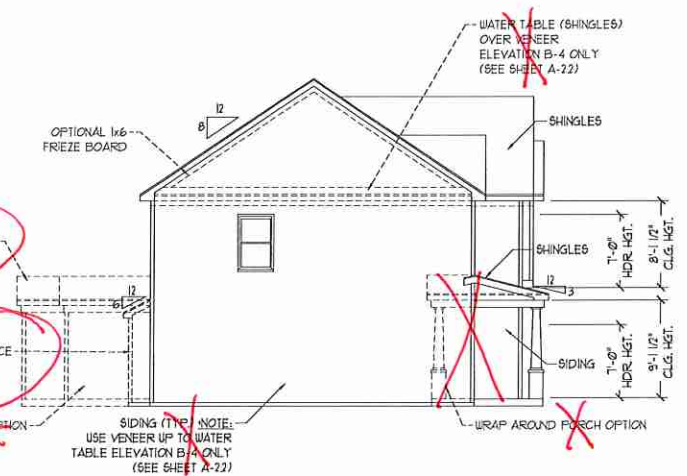
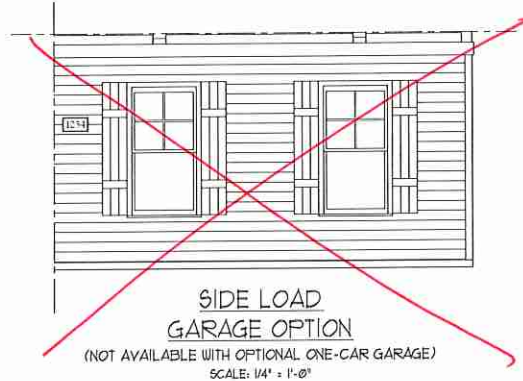
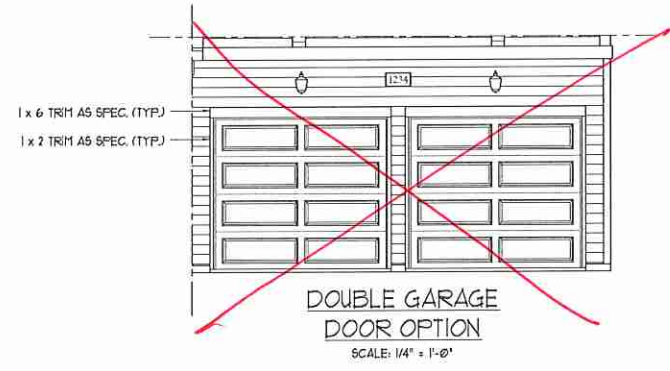
DATE: OCTOBER 13, 2017  
REV: MARCH 30, 2020  
DRAWN BY: WG  
ENGINEERED BY:  
REVIEWED BY:

CS

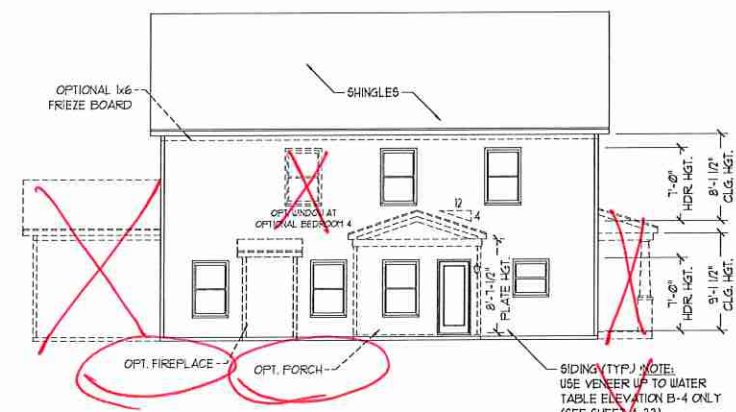


COLUMN DETAIL

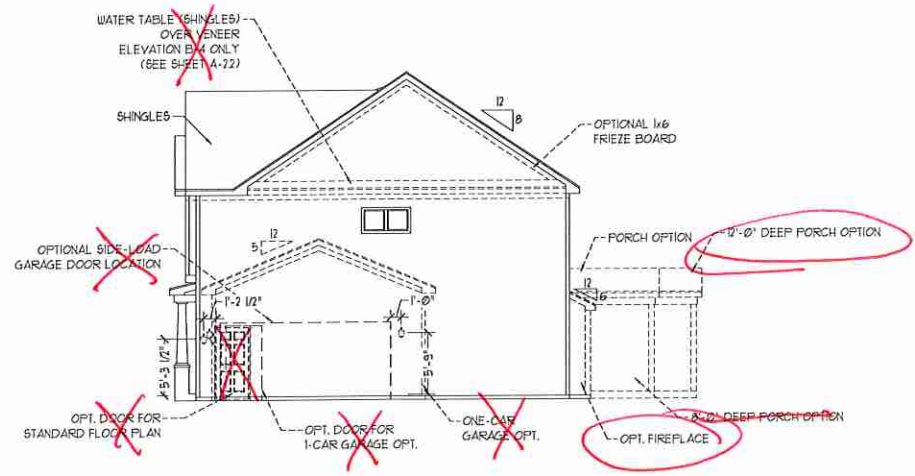
NOTE:  
 SEE SHEET A-2.1 FOR BRICK FRONT ELEVATIONS  
 SEE SHEET A-2.2 FOR STONE FRONT ELEVATIONS  
 SEE SHEET A-2.3 (ALL BRICK) ELEVATIONS



LEFT ELEVATION  
 SCALE: 1/8" = 1'-0"

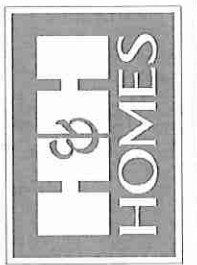


REAR ELEVATION  
 SCALE: 1/8" = 1'-0"



RIGHT ELEVATION  
 SCALE: 1/8" = 1'-0"

J.S. THOMPSON  
 ENGINEERING, INC.  
 600 WALKER AVE., SUITE 104  
 RALEIGH, NC 27605  
 PHONE: (919) 788-9910  
 FAX: (919) 788-9921  
 N.C. LICENSE NO. C-11733



PRICES, PROMOTIONS, INCENTIVES, FEATURES, OPTIONS, FLOOR PLANS, ELEVATIONS, DESIGNS, MATERIALS AND DIMENSIONS ARE SUBJECT TO CHANGE WITHOUT NOTICE AND MAY VARY IN ACTUAL CONSTRUCTION. ACTUAL POSITION OF HOUSE ON LOT WILL BE DETERMINED BY THE SITE PLAN AND PLOT PLAN. THESE PLANS ARE THE PROPERTY OF H&H HOMES, INC. AND ARE NOT TO BE REPRODUCED, COPIED, OR OTHERWISE USED FOR ANY OTHER PROJECT WITHOUT THE WRITTEN PERMISSION OF H&H HOMES, INC. STRICTLY FORBIDDEN. SEE NEW HOME SALES CONSULTANT FOR CURRENT DETAILS. COPYRIGHT © 2017 H&H HOMES, INC.

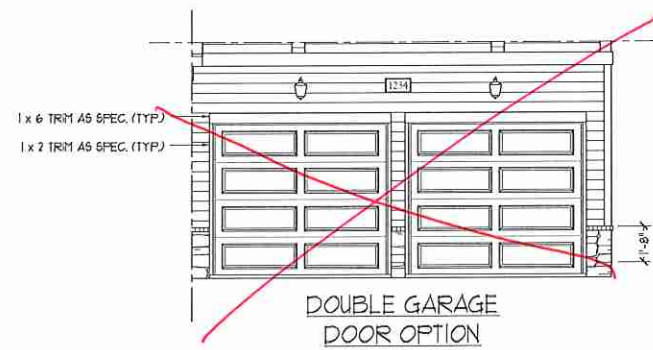
H&H HOMES, INC.  
 TOPSAIL

DATE: OCTOBER 13, 2017  
 REV: MARCH 30, 2020  
 SCALE: AS NOTED  
 DRAWN BY:  
 ENGINEERED BY:  
 REVIEWED BY:

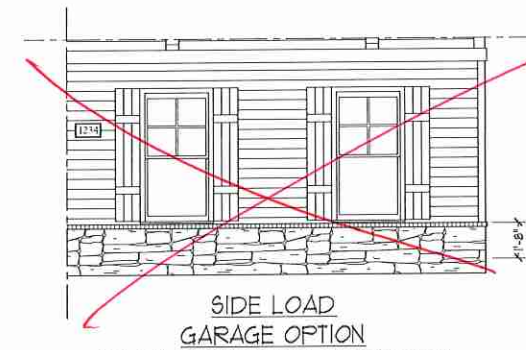
B - ELEVATIONS  
 A-2



FRONT ELEVATION-B-2  
SCALE: 1/4" = 1'-0"



DOUBLE GARAGE DOOR OPTION  
SCALE: 1/4" = 1'-0"

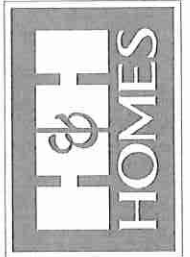


SIDE LOAD GARAGE OPTION  
(NOT AVAILABLE WITH OPTIONAL ONE-CAR GARAGE)  
SCALE: 1/4" = 1'-0"



FRONT ELEVATION-B-3  
SCALE: 1/4" = 1'-0"

**J.S. THOMPSON**  
ENGINEERING, INC.  
100 WALKER AVE., SUITE 104  
RALEIGH, NC 27605  
PHONE: (919) 786-0910  
FAX: (919) 786-0921  
NC LICENSE NO. C-1235



PRICES, PROMOTIONS, INCENTIVES, FEATURES, OPTIONS, FLOOR PLANS, ELEVATIONS, DESIGNS, MATERIALS AND FINISHES ARE SUBJECT TO CHANGE WITHOUT NOTICE AND MAY VARY IN ACTUAL CONSTRUCTION. ACTUAL POSITION OF HOUSE ON LOT WILL BE DETERMINED BY THE SITE PLAN AND PLOT PLAN. H&H HOMES, INC. IS THE SOLE PROPRIETOR AND COPYRIGHTED PROPERTY OF H&H HOMES. ANY USE, REPRODUCTION, ADAPTATION, OR DISPLAY OF THE PLANS IS STRICTLY PROHIBITED. SEE NEW HOME SALES CONTRACT FOR COMPLETE DETAILS. © 2017 H&H HOMES

H&H HOMES, INC.  
TOPSAIL

DATE: OCTOBER 13, 2017

REV: MARCH 30, 2020

SCALE: AS NOTED

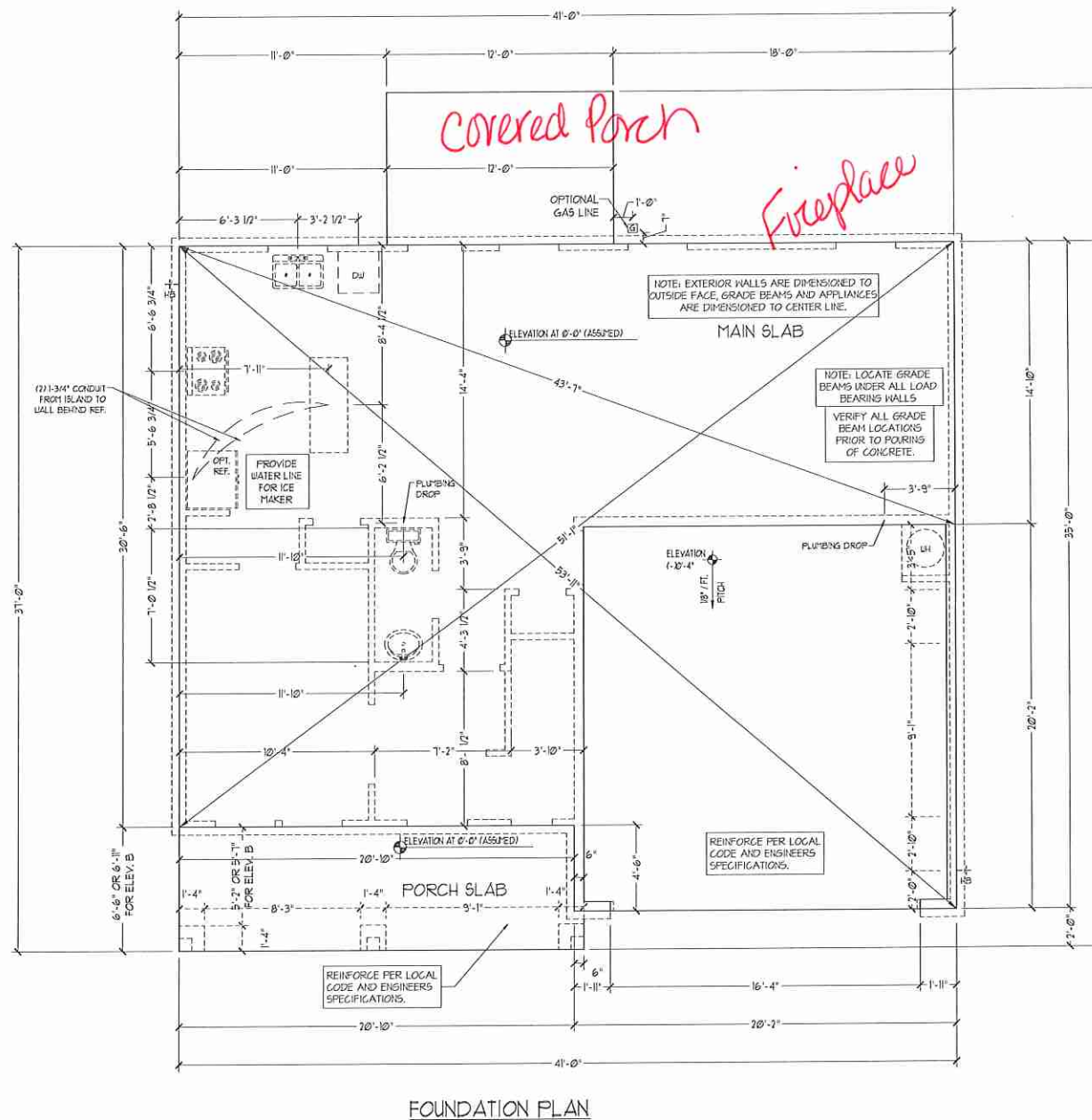
DRAWN BY:

ENGINEERED BY:

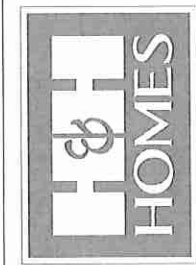
REVIEWED BY:

B - ELEVATION OPTIONS

A-2.1



**J.S. THOMPSON ENGINEERING, INC.**  
 655 WALKER AVE., SUITE 104  
 RALEIGH, NC 27605  
 PHONE: 919 788-9919  
 FAX: 919 788-9921  
 N.C. LICENSE NO. C-1233

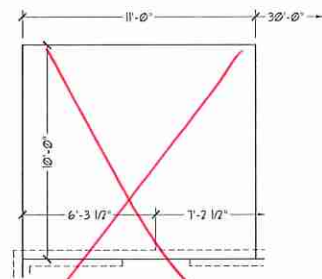


PRICES, PROMOTIONS, INCENTIVES, FEATURES, OPTIONS, FLOOR PLANS, ELEVATIONS, DESIGN, MATERIALS AND DIMENSIONS ARE SUBJECT TO CHANGE WITHOUT NOTICE AND MAY VARY IN ACTUAL CONSTRUCTION. ACTUAL POSITION OF HOUSE ON LOT WILL BE DETERMINED BY THE SITE PLAN AND PLOT PLAN. THESE PLANS ARE THE PROPERTY OF H&H HOMIES, INC. AND ARE NOT TO BE REPRODUCED, COPIED, REPRODUCED, ADAPTED, OR DISPLAYED IN ANY MANNER WITHOUT THE WRITTEN PERMISSION OF H&H HOMIES, INC. © 2017 H&H HOMIES, INC.

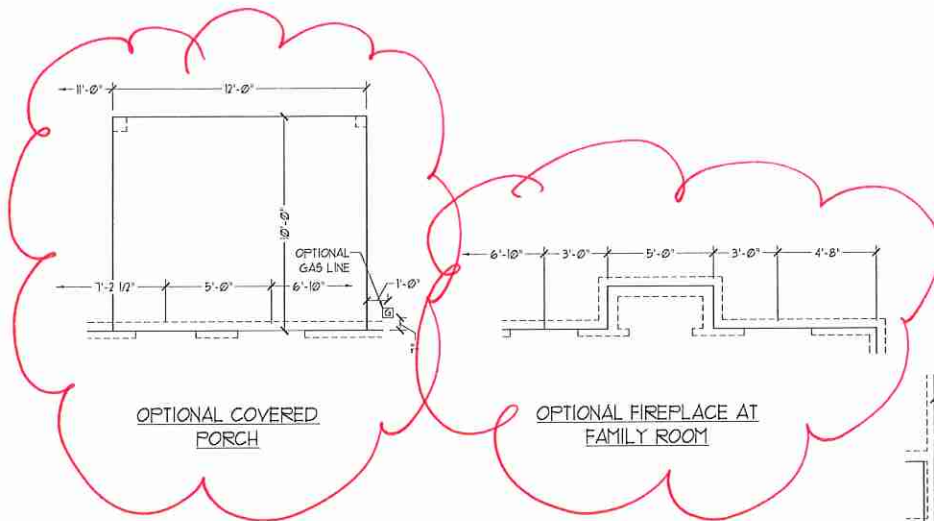
**H&H HOMIES, INC.**  
 TOPSAIL

DATE: OCTOBER 13, 2017  
 REV.: MARCH 30, 2020  
 SCALE: 1/4"=1'-0"  
 DRAWN BY:  
 ENGINEERED BY:  
 REVIEWED BY:

SLAB INTERFACE PLAN  
**A-4**

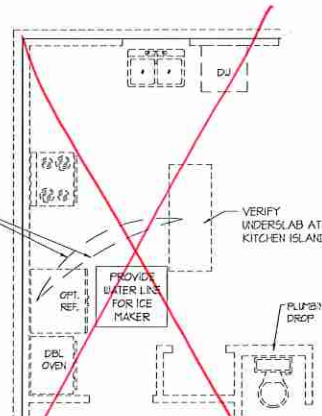


OPTIONAL PATIO



OPTIONAL COVERED PORCH

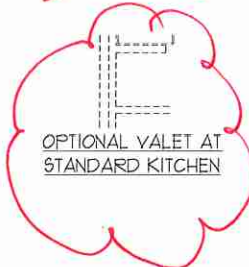
OPTIONAL FIREPLACE AT FAMILY ROOM



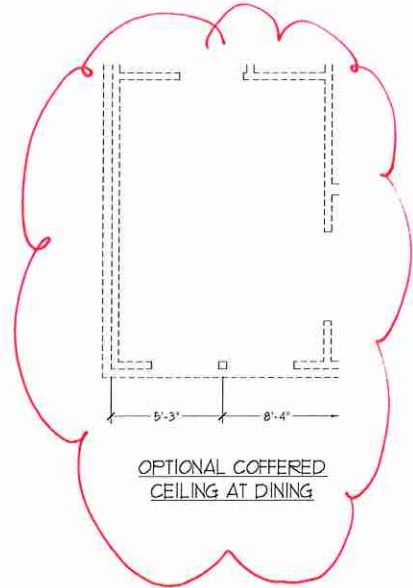
OPTIONAL GOURMET KITCHEN



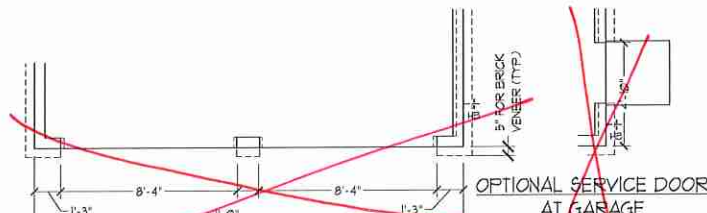
OPTIONAL DROP ZONE AT STANDARD KITCHEN



OPTIONAL VALET AT STANDARD KITCHEN



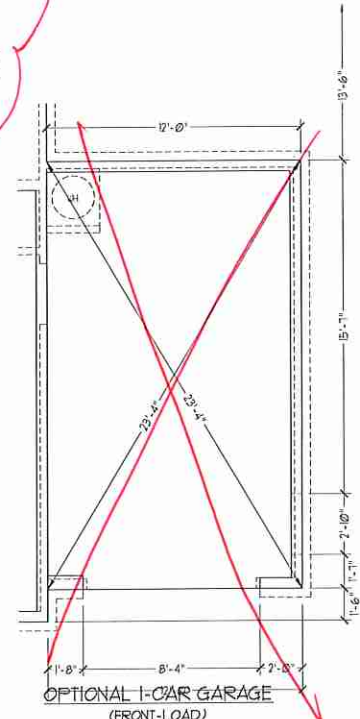
OPTIONAL COFFERED CEILING AT DINING



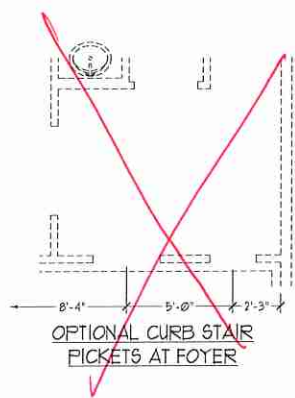
OPTIONAL SERVICE DOOR AT GARAGE  
(NOT AVAILABLE W/ OPT. 1-CAR GARAGE)



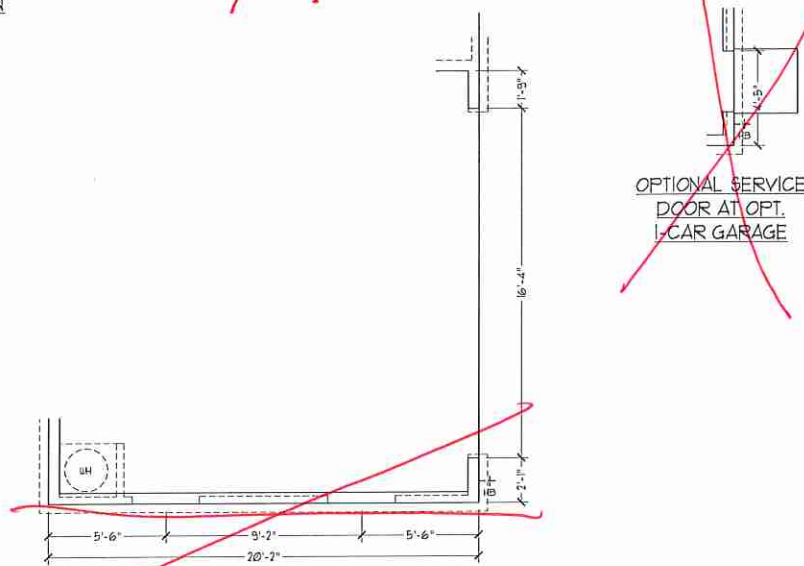
DOUBLE GARAGE DOOR OPTION



OPTIONAL 1-CAR GARAGE (FRONT-LOAD)



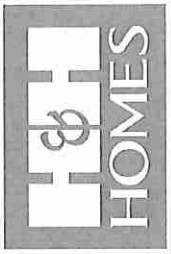
OPTIONAL CURB STAIR PICKETS AT FOYER



SIDE-LOAD GARAGE OPTION  
(NOT AVAILABLE WITH OPTIONAL ONE-CAR GARAGE)

OPTIONAL SERVICE DOOR AT OPT. 1-CAR GARAGE

J.S. THOMPSON  
ENGINEERING, INC.  
600 WALKER AVE., SUITE 104  
RALEIGH, NC 27605  
PHONE: (919) 786-0910  
FAX: (919) 786-0921  
S.C. LICENSE NO. C-1135



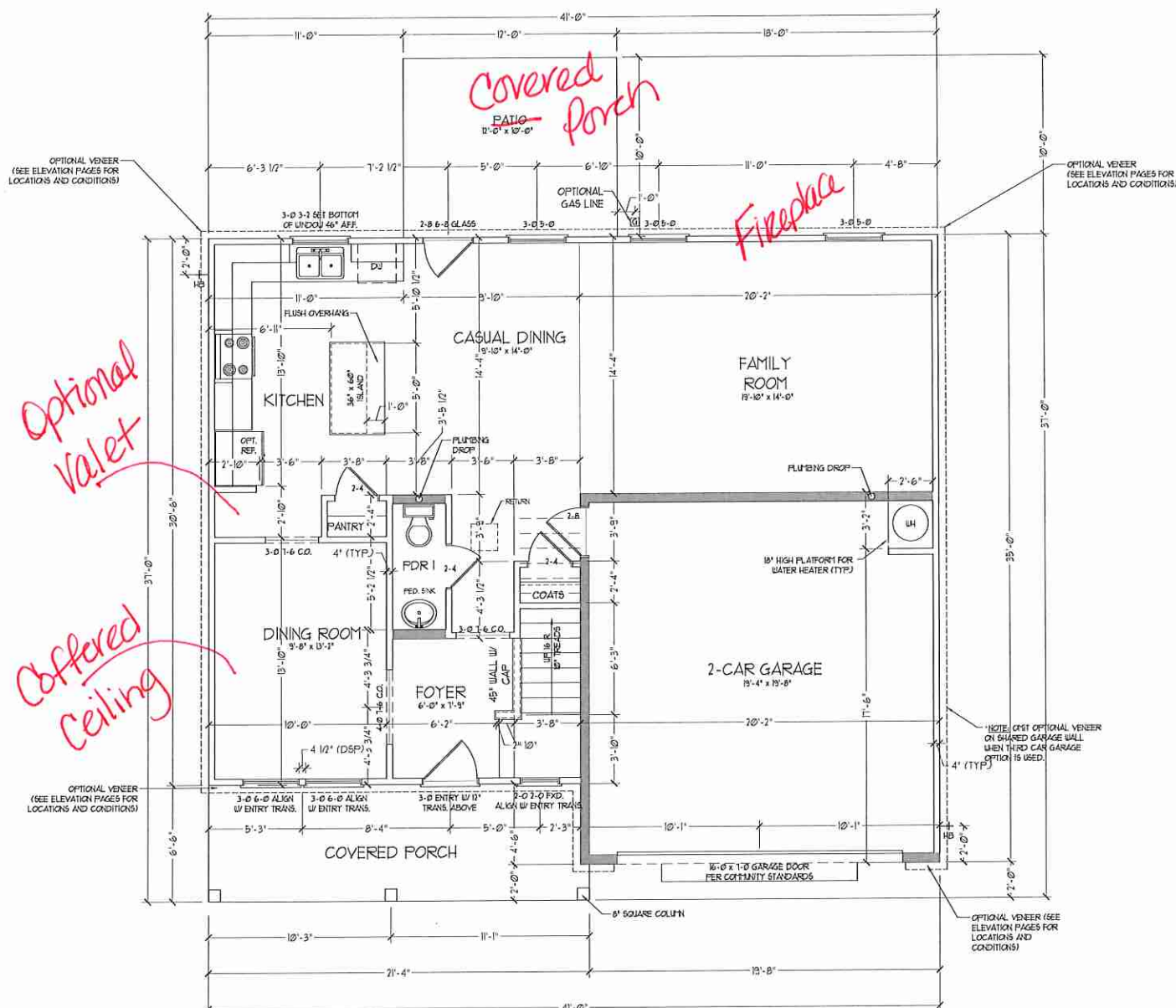
PRICES, PROMOTIONS, INCENTIVES, FEATURES, OPTIONS, FLOOR PLANS, ELEVATIONS, DESIGNS, MATERIALS AND DIMENSIONS ARE SUBJECT TO CHANGE WITHOUT NOTICE AND MAY VARY IN ACTUAL CONSTRUCTION. ACTUAL POSITION OF HOUSE DIAL WILL BE DETERMINED BY THE SITE PLAN AND PLOT PLAN. CONCEPTS, FLOOR PLANS, AND THE COPYRIGHTED PROPERTY OF H&H HOMES. ANY USE, REPRODUCTION, ADAPTATION, OR DISPLAY OF THE PLANS IS STRICTLY PROHIBITED. SEE NEW HOMES SCALES CONSULT FOR CURRENT DETAILS. COPYRIGHT © 2017 H&H HOMES

H&H HOMES, INC.  
TOPSAIL

DATE: OCTOBER 13, 2017  
REV.: MARCH 30, 2020  
SCALE: 1/4" = 1'-0"  
DRAWN BY:  
ENGINEERED BY:  
REVIEWED BY:

SLAB INTERFACE  
PLAN - OPTIONS

A-4.1



FIRST FLOOR PLAN  
(A1)

**SQUARE FOOTAGE**

1st FLOOR:	941 SQ. FT.
2nd FLOOR:	1364 SQ. FT.
TOTAL:	2305 SQ. FT.
GARAGE:	393 SQ. FT.
FRONT PORCH (A & C ELEVATIONS):	136 SQ. FT.
FRONT PORCH (B ELEVATIONS):	145 SQ. FT.
REAR COVERED PORCH:	120 SQ. FT.
1st FLOOR OPTIONS	
OPTIONAL FIREPLACE:	10 SQ. FT.
UNHEATED OPTIONS	
OPT 1-CAR GARAGE:	240 SQ. FT.
OPT 11'-0" X 10'-0" PORCH:	10 SQ. FT.
OPT WRAP AROUND PORCH (ELEV. A/C):	53 SQ. FT.
OPT WRAP AROUND PORCH (ELEV. B):	59 SQ. FT.

**SQUARE FOOTAGE W/ FULL BRICK VENEER**

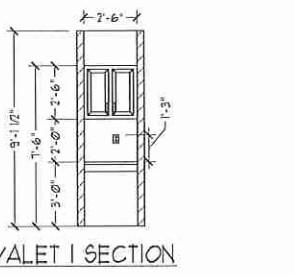
1st FLOOR:	938 SQ. FT.
2nd FLOOR:	1375 SQ. FT.
TOTAL:	2313 SQ. FT.
GARAGE:	418 SQ. FT.
FRONT PORCH (A & C ELEVATIONS):	139 SQ. FT.
FRONT PORCH (B ELEVATIONS):	145 SQ. FT.
REAR COVERED PORCH:	120 SQ. FT.
1st FLOOR OPTIONS	
OPTIONAL FIREPLACE:	14 SQ. FT.
UNHEATED OPTIONS	
OPT 1-CAR GARAGE:	295 SQ. FT.
OPT 11'-0" X 10'-0" PORCH:	10 SQ. FT.
OPT WRAP AROUND PORCH (ELEV. A/C):	53 SQ. FT.
OPT WRAP AROUND PORCH (ELEV. B):	59 SQ. FT.

NOTE: ALL EXTERIOR WALLS AND ATTIC WALLS ARE TO BE 2 X 4 @ 16" O.C. (UNO). ALL INTERIOR LOAD BEARING WALLS ARE TO BE 2 X 4 @ 16" O.C. (UNO) AND NON-LOAD BEARING INTERIOR WALLS ARE TO BE 2 X 4 @ 24" O.C. (UNO).

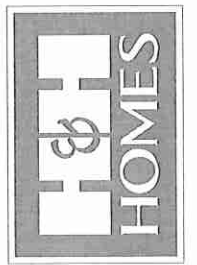
7/6 WALL

\* SHADED WALLS ARE TO BE 2 X 6 @ 16" O.C. (LOAD BEARING) OR 2 X 6 @ 24" O.C. (NON-LOAD BEARING) REGARDLESS OF EXTERIOR WALL CONDITION

\* PROVIDE MINIMUM INSULATION IN CEILINGS AND WALLS PER SECTION N 1102.1



J.S. THOMPSON  
ENGINEERING, INC.  
100 W. MAIN AVE., SUITE 104  
RALEIGH, NC 27605  
PHONE: (919) 788-0919  
FAX: (919) 788-0921  
N.C. LICENSE NO. C-11733

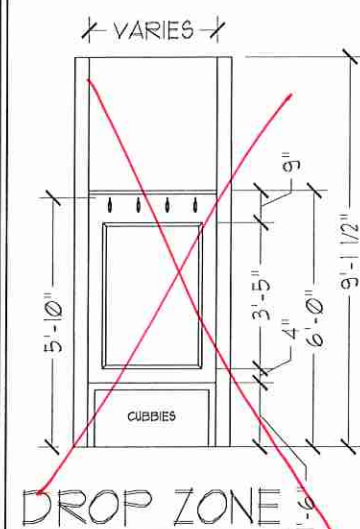
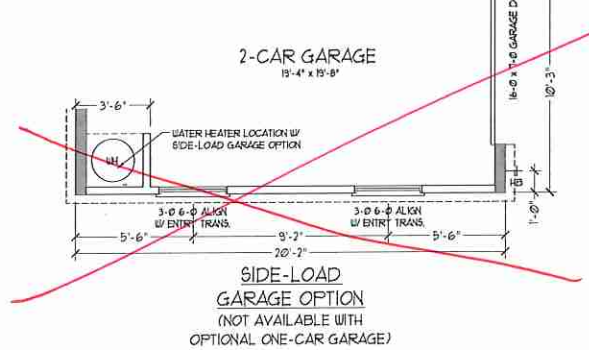
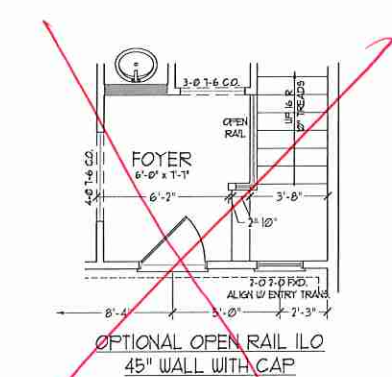
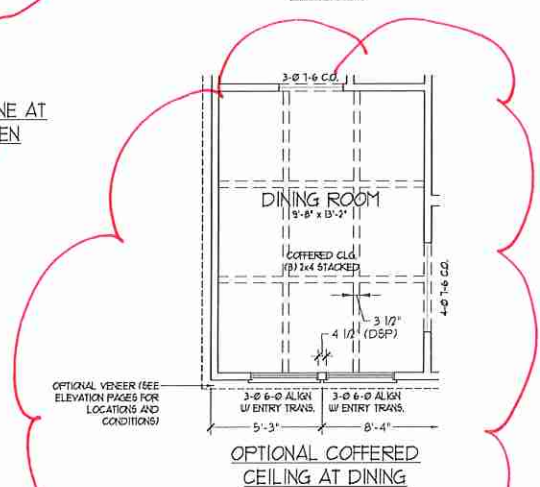
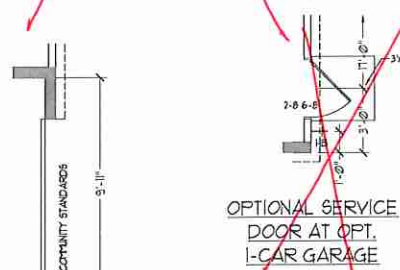
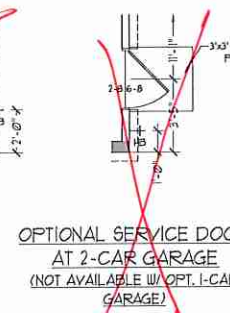
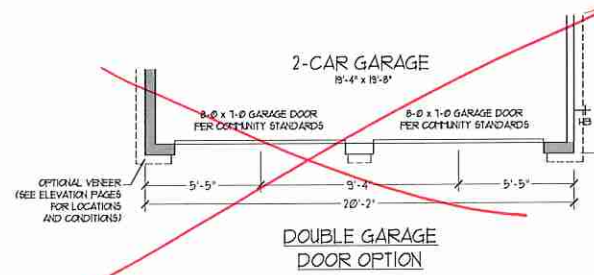
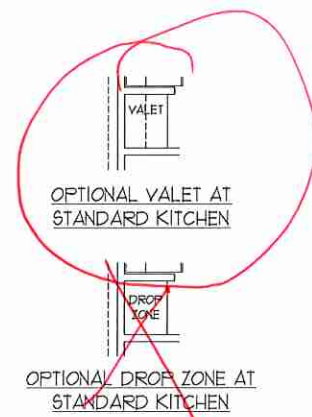
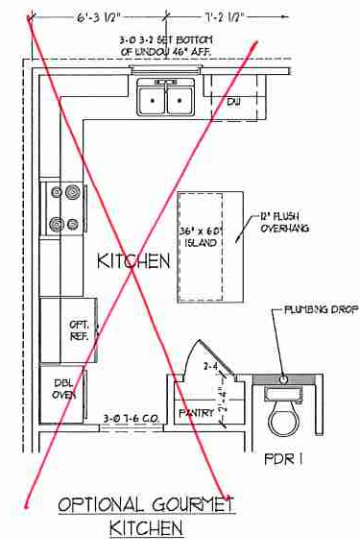
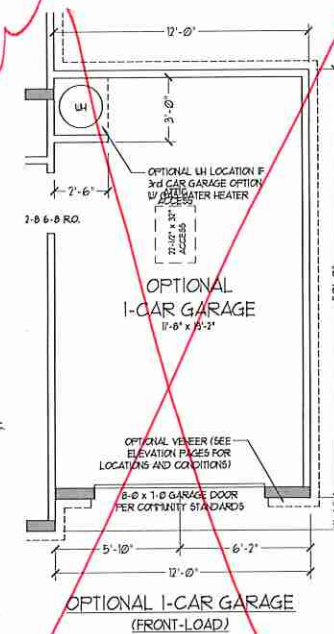
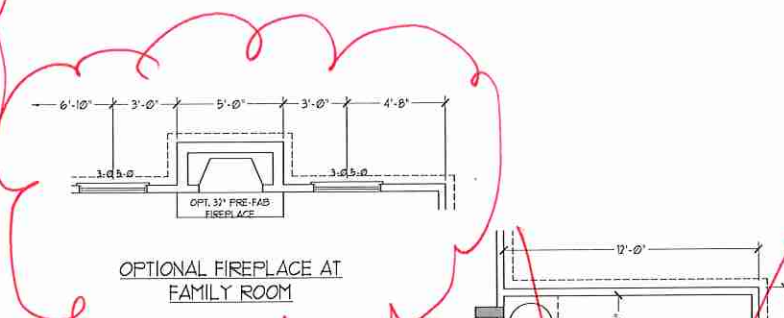
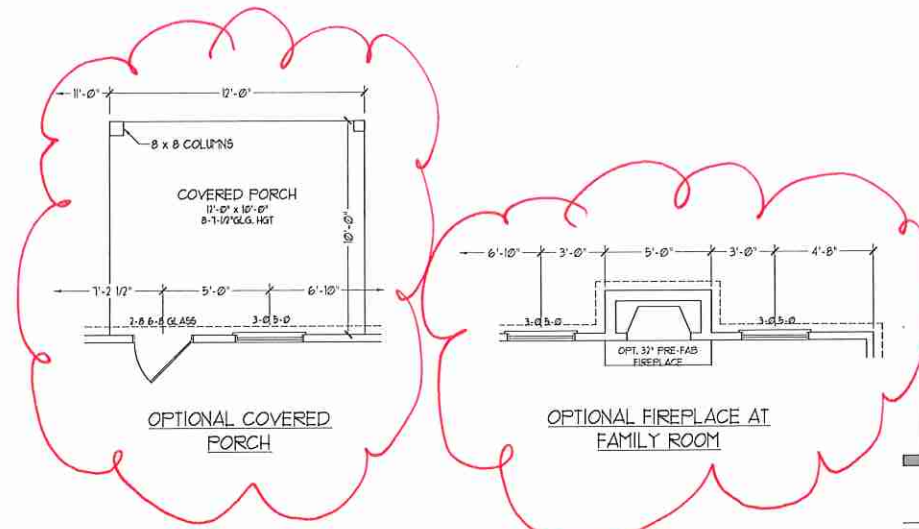
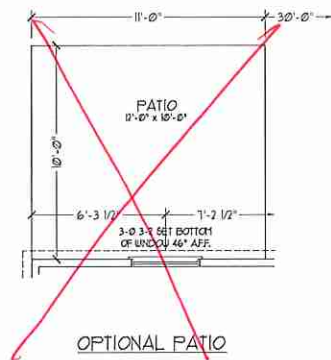
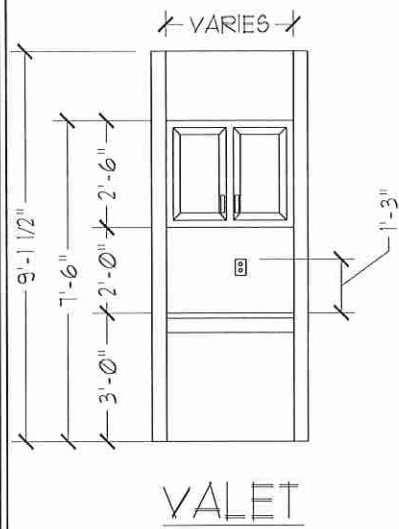


PRICES, PROMOTIONS, INCENTIVES, FEATURES, OPTIONS, FLOOR PLANS, ELEVATIONS, DESIGNS, MATERIALS AND DIMENSIONS ARE SUBJECT TO CHANGE WITHOUT NOTICE AND MAY VARY IN ACTUAL CONSTRUCTION. ACTUAL POSITION OF HOUSE ON LOT WILL BE DETERMINED BY THE SITE PLAN AND PLOT PLAN. FLOOR PLANS AND DESIGN ELEMENTS ARE THE PROPERTY OF H&H HOMES. ANY USE, REPRODUCTION, ADAPTATION, OR DISPLAY OF THE PLANS IS STRICTLY PROHIBITED. SEE NEW HOME SALES CONSULTANT FOR CURRENT DETAILS. COPYRIGHT © 2017 H&H HOMES

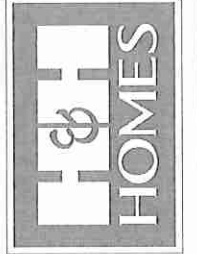
H&H HOMES, INC.  
TOPSAIL

DATE: OCTOBER 13, 2017  
REV.: MARCH 30, 2020  
SCALE: 1/4" = 1'-0"  
DRAWN BY:  
ENGINEERED BY:  
REVIEWED BY:

FIRST FLOOR PLAN  
A-5



J.S. THOMPSON  
ENGINEERING, INC.  
400 WARE AVE., SUITE 104  
RALEIGH, NC 27605  
PHONE: (919) 286-9910  
FAX: (919) 286-9921  
N.C. LICENSE NO. C-11735

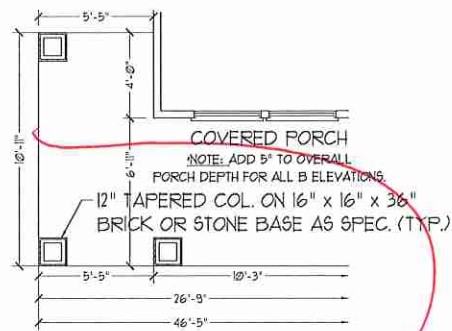


PRICES, PROMOTIONS, INCENTIVES, FEATURES, OPTIONS, FLOOR PLANS, ELEVATIONS, DESIGNS, MATERIALS AND DIMENSIONS ARE SUBJECT TO CHANGE WITHOUT NOTICE AND MAY VARY IN ACTUAL CONSTRUCTION. ACTUAL POSITION OF HOUSE ON LOT WILL BE DETERMINED BY THE SITE PLAN AND PLOT PLAN. CONCEPTS, FLOOR PLANS, AND ELEVATIONS ARE THE PROPERTY OF H&H HOMES, INC. ANY USE, REPRODUCTION, ADAPTATION, OR DISPLAY OF THESE PLANS IS STRICTLY PROHIBITED. SEE BUYER'S SALES CONSULTATION FOR CURRENT DETAILS. COPYRIGHT 2017 H&H HOMES, INC.

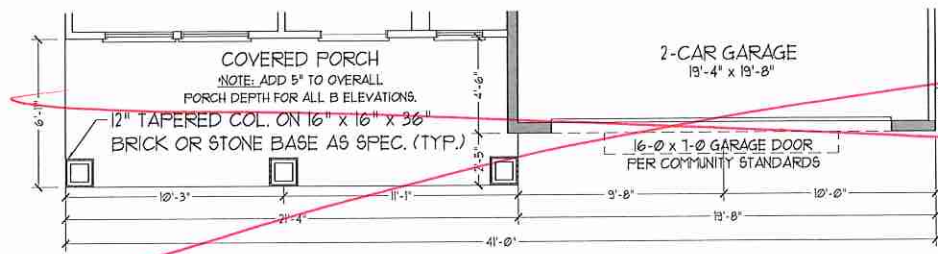
H&H HOMES, INC.  
TOPSAIL

DATE: OCTOBER 13, 2017  
REV.: MARCH 30, 2020  
SCALE: 1/4" = 1'-0"  
DRAWN BY:  
ENGINEERED BY:  
REVIEWED BY:  
FIRST FLOOR PLAN OPTIONS

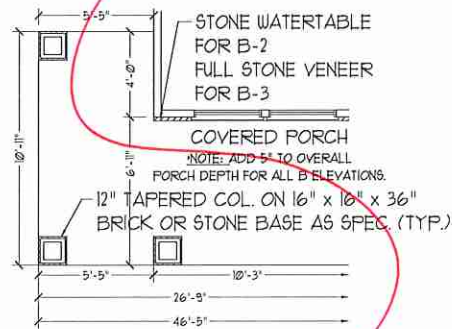
A-5.1



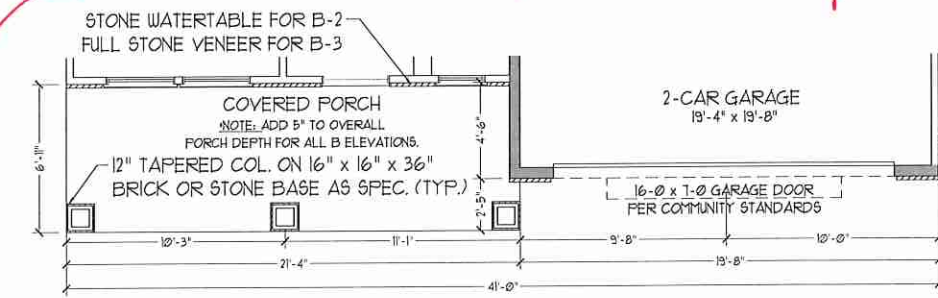
OPTIONAL WRAP AROUND PORCH (B1)



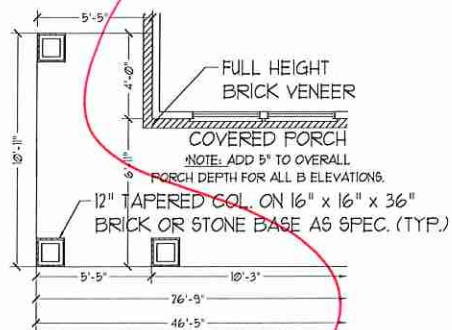
FIRST FLOOR PLAN (B1)



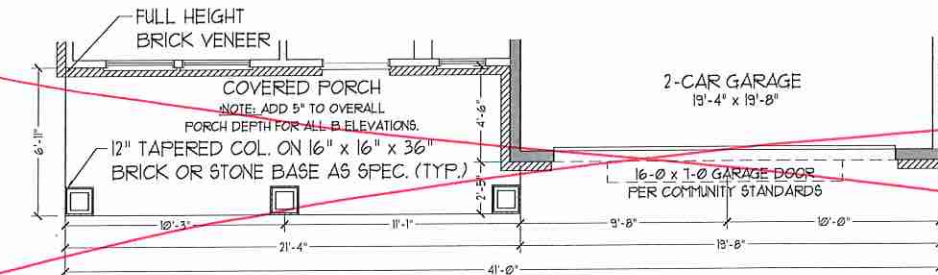
OPTIONAL WRAP AROUND PORCH (B2 & B3)



FIRST FLOOR PLAN (B2 & B3)

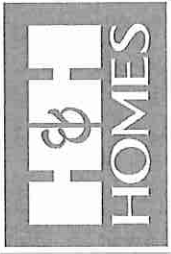


OPTIONAL WRAP AROUND PORCH (B4)



FIRST FLOOR PLAN (B4)

J.S. THOMPSON ENGINEERING, INC.  
600 WARE AVE., SUITE 104  
RALEIGH, NC 27605  
PHONE: (919) 786-9910  
FAX: (919) 786-9921  
N.C. LICENSE NO. C-41735



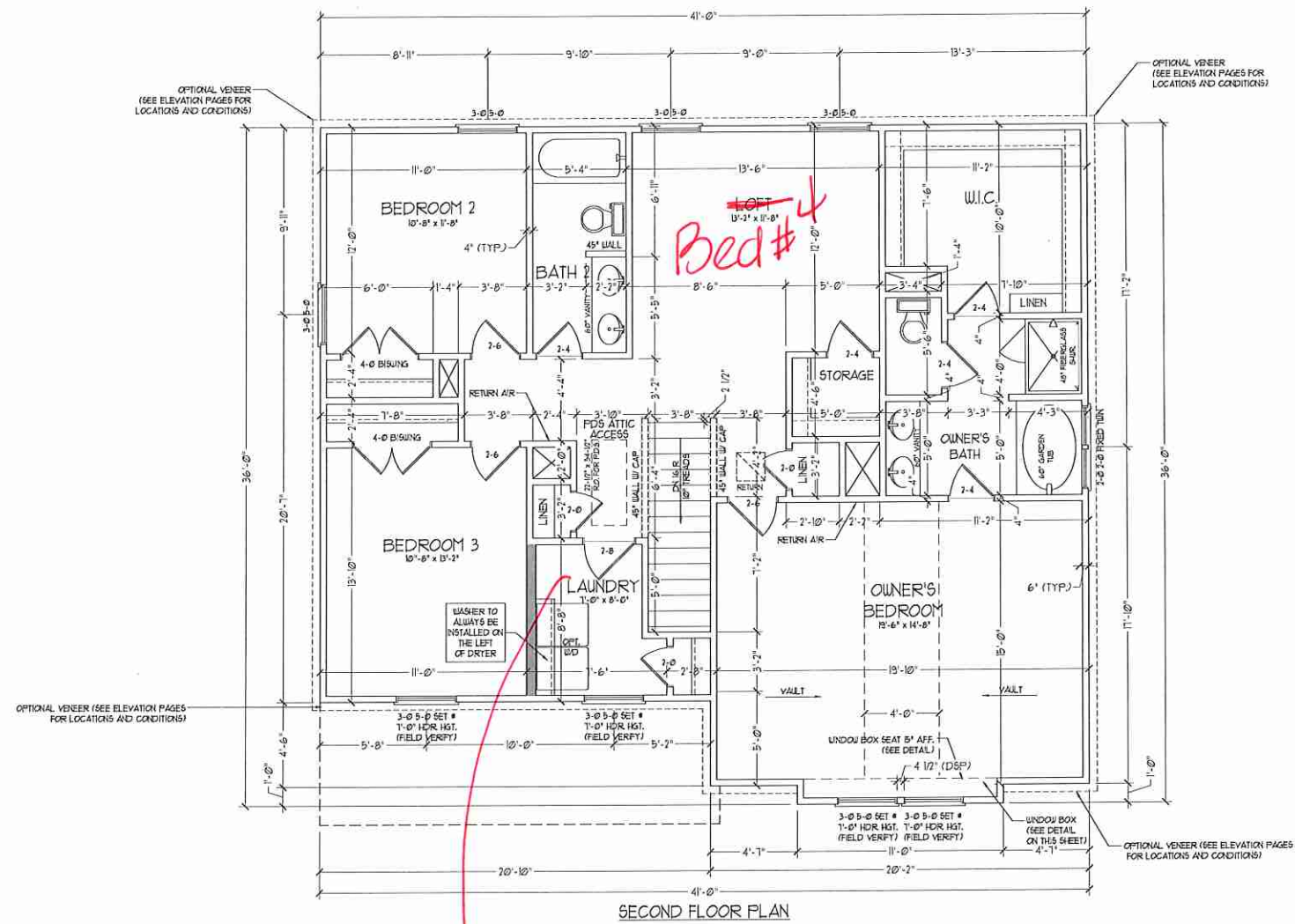
PRICES, PROMOTIONS, INCENTIVES, FEATURES, OPTIONS, FLOOR PLANS, ELEVATIONS, DESIGNS, MATERIALS AND DIMENSIONS ARE SUBJECT TO CHANGE WITHOUT NOTICE AND MAY VARY IN ACTUAL CONSTRUCTION. ACTUAL POSITION OF HOUSE ON LOT WILL BE DETERMINED BY THE SITE PLAN AND PLOT PLAN. FLOOR PLANS AND ELEVATIONS ARE THE PROPERTY OF H&H HOMES, INC. REPRODUCTION, ADAPTATION, OR DISPLAY OF THE PLANS IS STRICTLY PROHIBITED. SEE NEW HOME SALES CONSULTANT FOR CURRENT DETAILS. COPYRIGHT 2017 H&H HOMES

H&H HOMES, INC.  
TOPSAIL

DATE: OCTOBER 13, 2017  
REV.: MARCH 30, 2020  
SCALE: 1/4" = 1'-0"  
DRAWN BY:  
ENGINEERED BY:  
REVIEWED BY:

FIRST FLOOR PARTIAL PLANS - "B" ELEVATION  
A-5.3



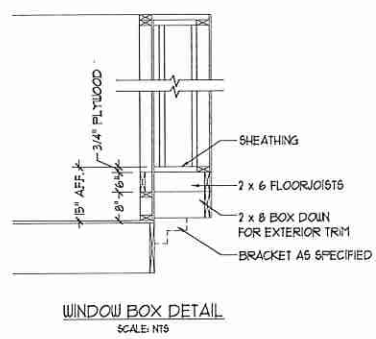


NOTE: ALL EXTERIOR WALLS AND ATTIC WALLS ARE TO BE 2 x 4 @ 16" O.C. (INO). ALL INTERIOR LOAD BEARING WALLS ARE TO BE 2 x 4 @ 16" O.C. (INO) AND NON-LOAD BEARING INTERIOR WALLS ARE TO BE 2 x 4 @ 24" O.C. (INO).

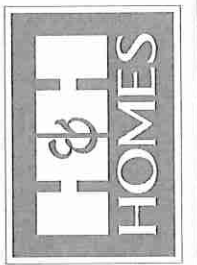
2x6 WALL

\* SHADED WALLS ARE TO BE 2 x 6 @ 16" O.C. (LOAD BEARING) OR 2 x 6 @ 24" O.C. (NON-LOAD BEARING) REGARDLESS OF EXTERIOR WALL CONDITION

\* PROVIDE MINIMUM INSULATION IN CEILINGS AND WALLS PER SECTION N 11071



**J.S. THOMPSON ENGINEERING, INC.**  
455 WALDE AVENUE, SUITE 104  
RALEIGH, NC 27605  
PHONE: (919) 788-9919  
FAX: (919) 788-9921  
N.C. LICENSE NO. C-1133



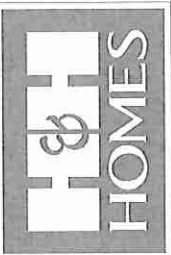
PRICES, PROMOTIONS, INCENTIVES, FEATURES, OPTIONS, FLOOR PLANS, ELEVATIONS, DESIGNS, MATERIALS AND METHODS OF CONSTRUCTION ARE ESTIMATED AND MAY VARY IN ACTUAL CONSTRUCTION. ACTUAL POSITION OF HOUSE ON LOT WILL BE DETERMINED BY THE SITE PLAN AND FLOOR PLAN. THIS PLAN IS A CONCEPTUAL DESIGN. ALL CONCEPTS, FLOOR PLANS AND ELEVATIONS ARE THE PROPERTY OF H&H HOMES. ANY USE, REPRODUCTION, ADAPTATION, OR DISPLAY OF THIS PLAN IS STRICTLY PROHIBITED. SEE NEW HOME SALES CONTRACT FOR COMPLETE DETAILS. COPYRIGHT © 2017 H&H HOMES

**H&H HOMES, INC.**  
TOPSAIL

DATE: OCTOBER 13, 2017  
REV.: MARCH 30, 2020  
SCALE: 1/4" = 1'-0"  
DRAWN BY:  
ENGINEERED BY:  
REVIEWED BY:

SECOND FLOOR PLAN  
A-6

**J.S. THOMPSON  
ENGINEERING, INC.**  
606 WALKER AVE., SUITE 104  
RALEIGH, NC 27605  
PHONE: (919) 788-9919  
FAX: (919) 788-9921  
N.C. LICENSE NO. C-1235



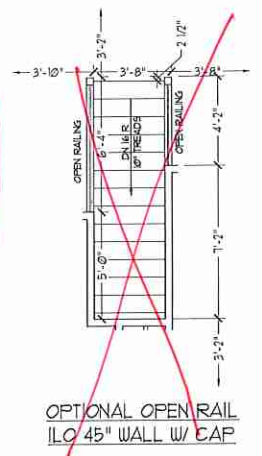
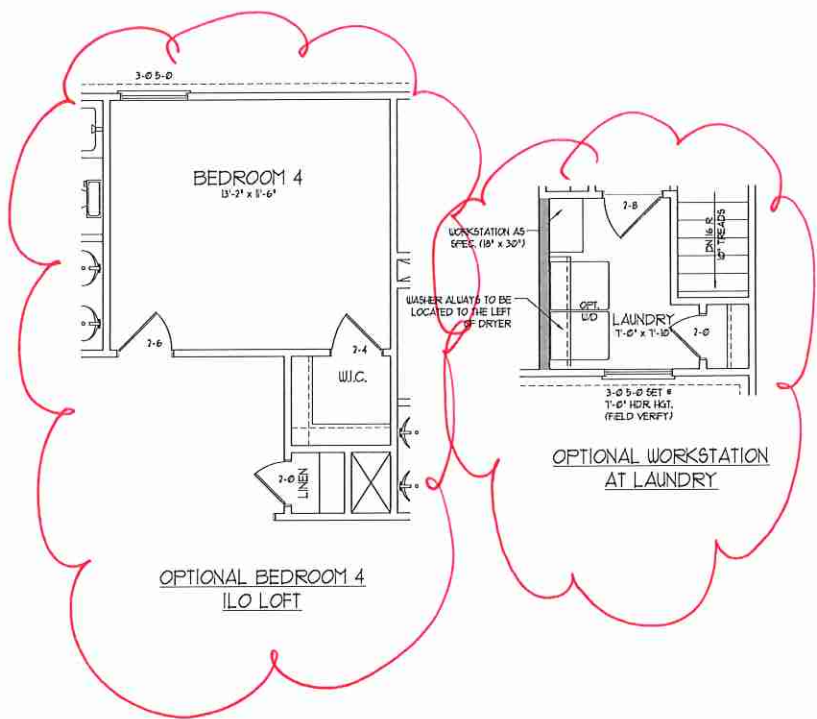
PRICES, PROMOTIONS, INCENTIVES, FEATURES, OPTIONS, FLOOR PLANS, ELEVATIONS, DESIGNS, MATERIALS AND DIMENSIONS OF FINISHES AND FIXTURES ARE ESTIMATED AND MAY VARY IN ACTUAL CONSTRUCTION. ACTUAL POSITION OF HOUSE ON LOT WILL BE DETERMINED BY THE SITE PLAN AND PLAT PLAN. H&H HOMES, INC. IS THE SOLE PROPRIETOR OF THESE CONCEPTS. FLOOR PLANS ARE THE COPYRIGHTED PROPERTY OF H&H HOMES. ANY USE, REPRODUCTION, ADAPTATION, OR DISPLAY OF THE PLANS IS STRICTLY PROHIBITED. SEE WEBSITE FOR TERMS AND CONDITIONS. CURRENT DETAIL. COPYRIGHT 2017 H&H HOMES.

H&H HOMES, INC.  
TOPSAIL

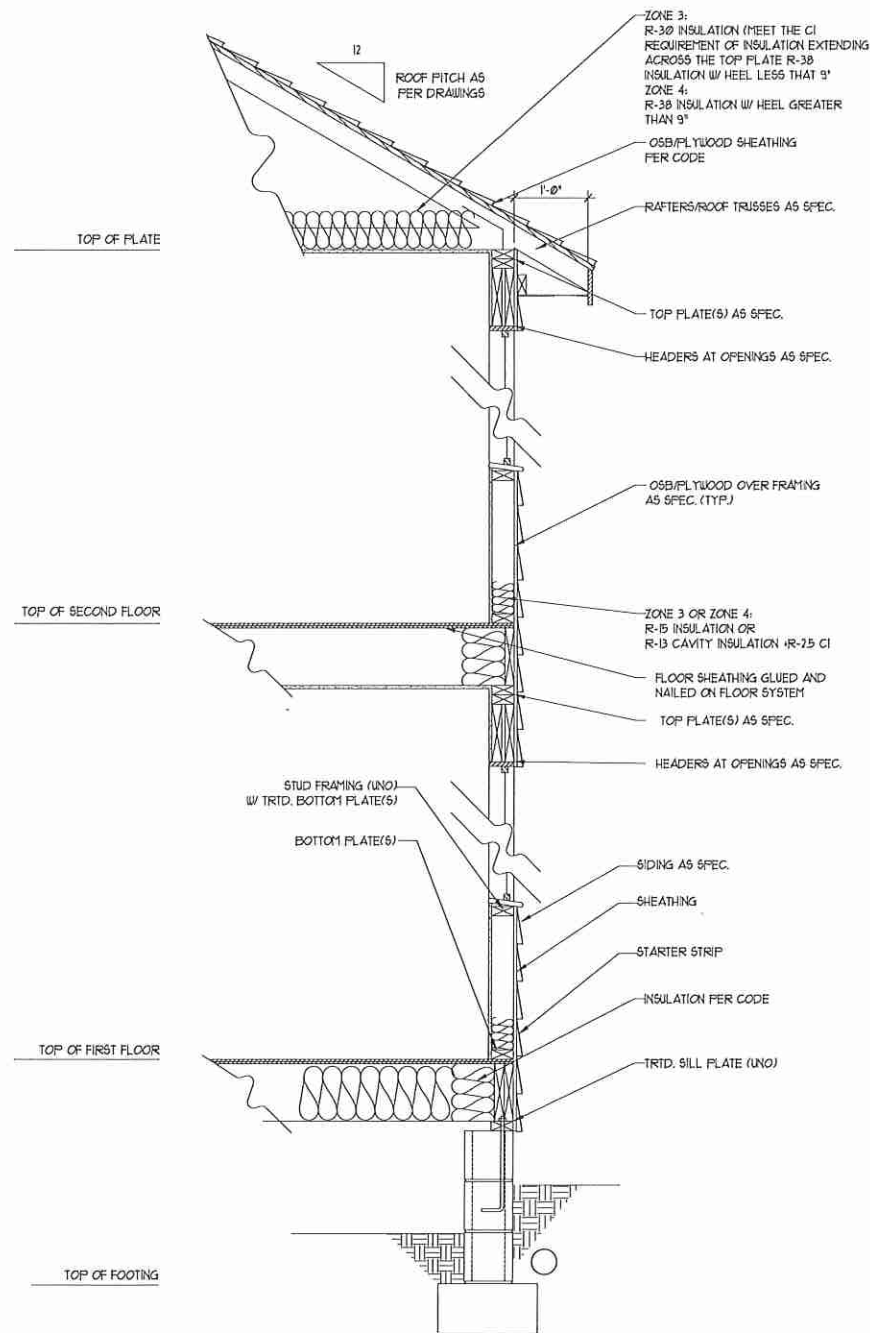
DATE: OCTOBER 13, 2017  
REV.: MARCH 30, 2020  
SCALE: 1/4" = 1'-0"  
DRAWN BY:  
ENGINEERED BY:  
REVIEWED BY:

SECOND FLOOR  
PLAN OPTIONS  
A-6.1

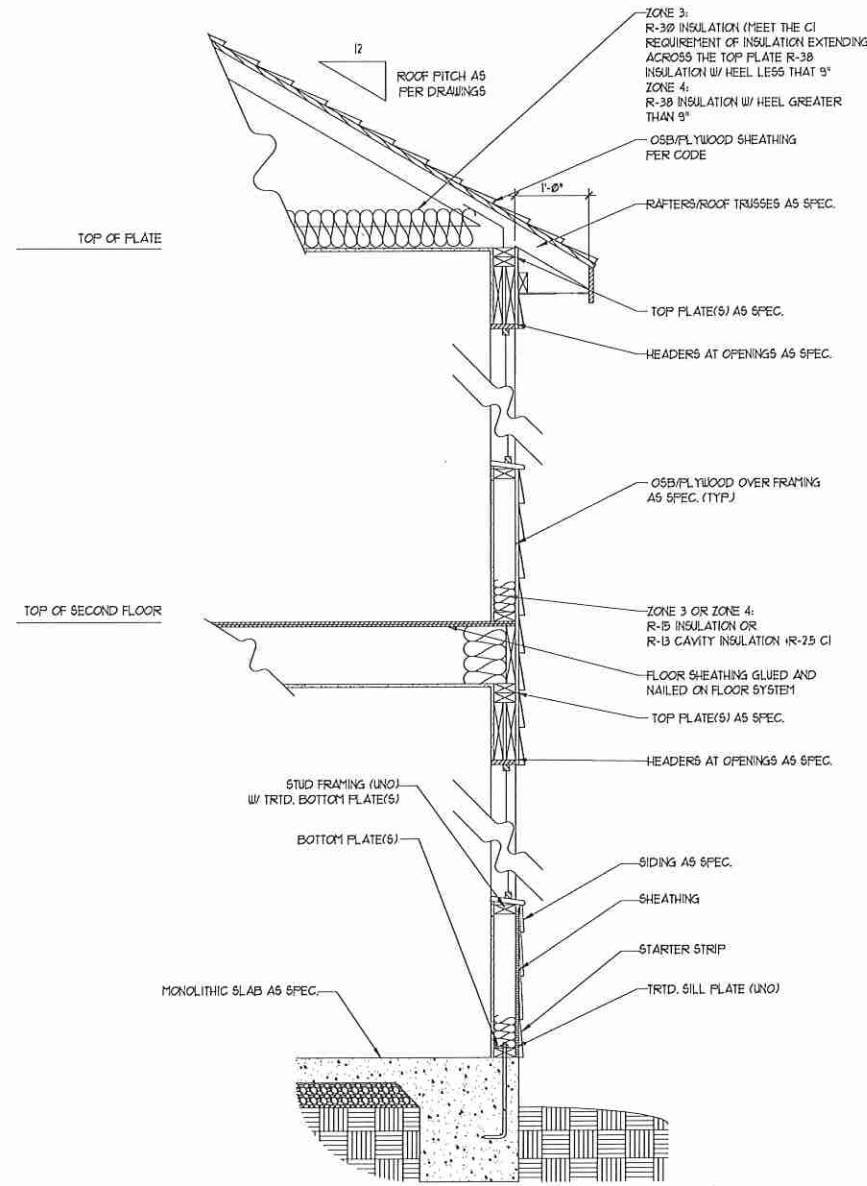
~~OPTIONAL WINDOW AT  
BEDROOM 4~~



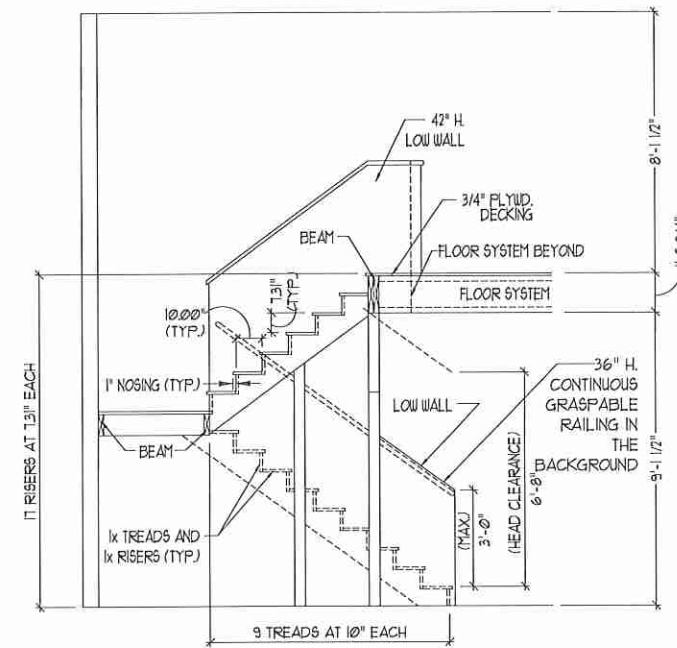
OPTIONAL BEDROOM 4  
ILO LOFT



WALL SECTION W/ CRAWL SPACE  
W/ STD. SIDING SHOWN (NTS)



WALL SECTION W/ SLAB  
W/ STD. SIDING SHOWN (NTS)



TYPICAL STAIR DETAIL  
(NTS)

\* \* \* \* \*

**STAIR NOTES:**

**RAILING:**

BALUSTERS SHALL BE SPACED SO THAT A 4" SPHERE CANNOT PASS THROUGH.

THE TRIANGULAR OPENINGS FORMED BY THE RISER, TREAD AND BOTTOM RAIL OF A GUARD AT THE OPEN SIDE OF A STAIRWAY ARE PERMITTED TO BE A SUCH A SIZE THAT A SPHERE OF 6 INCHES CANNOT PASS THROUGH.

OPENINGS FOR REQUIRED GUARDS ON THE SIDES OF STAIR TREADS SHALL NOT ALLOW A SPHERE 4 3/8 INCHES TO PASS THROUGH.

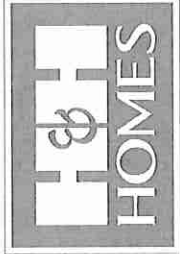
**HANDRAILS:**

HANDRAILS FOR STAIRWAYS SHALL BE CONTINUOUS FOR THE FULL LENGTH OF THE FLIGHT, FROM A POINT DIRECTLY ABOVE THE TOP RISER OF THE FLIGHT TO A POINT DIRECTLY ABOVE THE LOWEST RISER. HANDRAIL ENDS SHALL BE RETURNED OR SHALL TERMINATE IN NEVEL POSTS OR SAFETY TERMINALS. HANDRAILS ADJACENT TO A WALL SHALL HAVE A SPACE OF NOT LESS THAN 1-1/2" INCH BETWEEN THE WALL AND HANDRAILS.

CONTINUOUS GRASPABLE HANDRAIL MUST MEET TYPE ONE OR TYPE TWO CRITERIA

\* \* \* \* \*

**J.S. THOMPSON**  
ENGINEERING, INC.  
150 WILKINSON AVENUE, SUITE 104  
RALEIGH, NC 27605  
PHONE: (919) 788-9910  
FAX: (919) 788-9911  
NC LICENSE NO. C1233



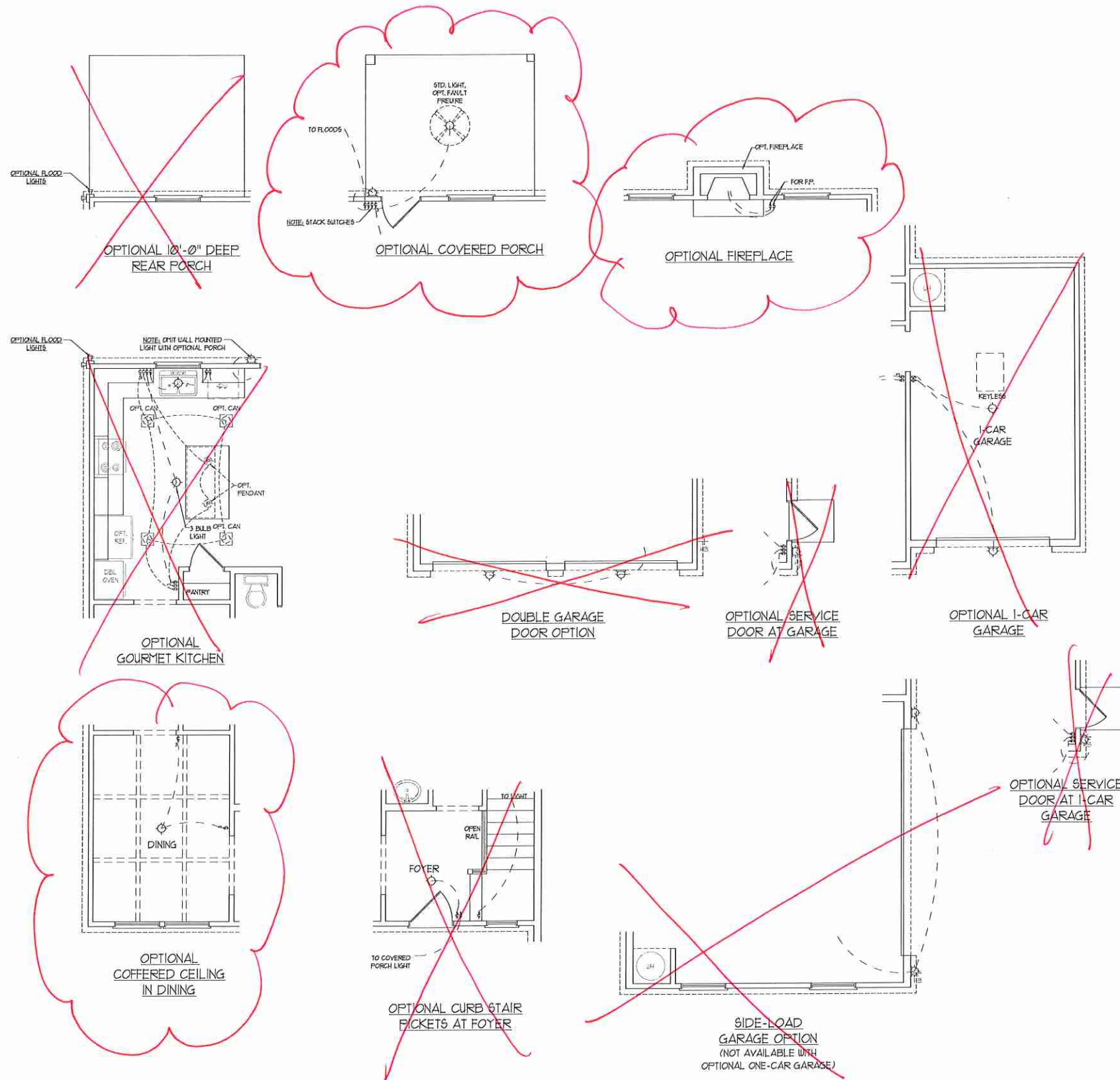
PRICES, PROMOTIONS, INCENTIVES, FEATURES, OPTIONS, FLOOR PLANS, ELEVATIONS, DESIGNS, MATERIALS, FINISHES, AND DIMENSIONS WITHOUT NOTICE. SQUARE FOOTAGE AND DIMENSIONS ARE ESTIMATED AND MAY VARY IN ACTUAL CONSTRUCTION. ACTUAL POSITION OF HOUSE ON LOT WILL BE DETERMINED BY PLATS AND RECORDS. H&H HOMES IS NOT RESPONSIBLE FOR ANY UNLAWFUL CONCEPTIONS. FLOOR PLANS ARE THE COPYRIGHTED PROPERTY OF H&H HOMES. ANY USE, REPRODUCTION, ADAPTATION, OR DISPLAY OF THE PLANS IS STRICTLY PROHIBITED. © 2017 H&H HOMES

H&H HOMES, INC.  
TOTSAIL

DATE: OCTOBER 13, 2017  
REV.: MARCH 30, 2020  
SCALE: 1/4"=1'-0"  
DRAWN BY:  
ENGINEERED BY:  
REVIEWED BY:

WALL SECTIONS  
AND STAIR  
DETAIL

AD-1



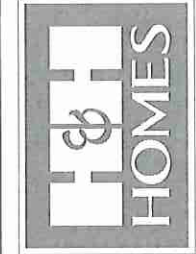
**ELECTRICAL LAYOUT NOTES:**

- 1) BLOCK AND USE FOR ALL CEILING FANS PER PLAN.
- 2) VANITY LIGHTS TO BE SET # 30" AFF. (TYP)
- 3) ADDITIONAL EXTERIOR OUTLETS REQUIRED BY CODE TO BE LOCATED BY ELECTRICAL.
- 4) PLACE SWITCHES BY (YOU FIRST) ROUGH OPENINGS.

**ELECTRICAL LEGEND**

	10 V OUTLET
	WALL MOUNT LIGHT
	CEILING MOUNT LIGHT
	PENDANT LIGHT
	RECESSED CAN LIGHT
	MINI CAN LIGHT
	EYEBALL LIGHT
	FLUORESCENT LIGHT
	7 LAMP, 4' FLUORESCENT LIGHT
	FLOOD LIGHT
	SWITCH
	3-WAY SWITCH
	4-WAY SWITCH
	DIFFER SWITCH
	CONDUIT FOR COMPONENT WIRING
	SPEAKER
	DOORBELL CHIME
	10 V SMOKE DETECTOR
	CO DETECTOR
	EXHAUST FAN
	LOW VOLTAGE PANEL
	CEILING FAN
	CEILING FAN W/ LIGHT

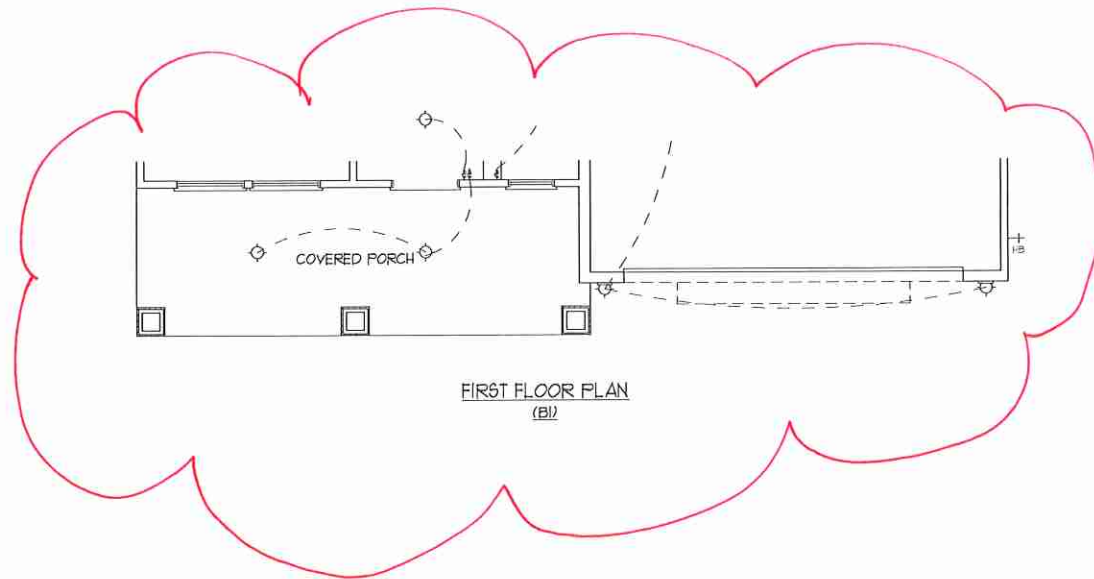
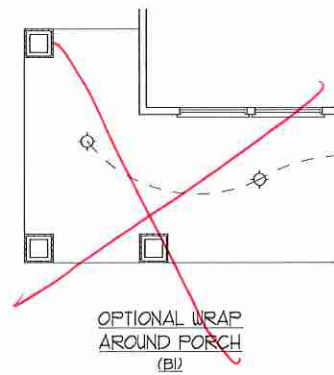
**J.S. THOMPSON ENGINEERING, INC.**  
 455 WALKER AVE., SUITE 104  
 RALEIGH, NC 27605  
 PHONE: (919) 788-9910  
 FAX: (919) 788-9914  
 NC LICENSE NO. C-11233



PRICES, FINANCIALS, INCENTIVES, FEATURES, OPTIONAL FLOOR PLANS, ELEVATIONS, DESIGN, MATERIALS, AND FINISHES ARE SUBJECT TO CHANGE WITHOUT NOTICE. SQUARE FOOTAGE AND DIMENSIONS ARE ESTIMATED AND MAY VARY IN ACTUAL CONSTRUCTION. ACTUAL POSITION OF HOUSE ON LOT AND POSITION OF HOUSE ON LOT ARE SHOWN ON FLOOR PLANS AND ELEVATION DRAWINGS ARE ARTIST CONCEPTIONS. FLOOR PLANS ARE THE COPYRIGHTED PROPERTY OF H&H HOMES. ANY USE, REPRODUCTION, ADAPTATION OR DERIVATION OF THESE PLANS OR DRAWINGS WITHOUT THE WRITTEN PERMISSION OF H&H HOMES IS STRICTLY PROHIBITED. COPYRIGHT 2017 H&H HOMES.

**H&H HOMES, INC.**  
 TOPSAIL

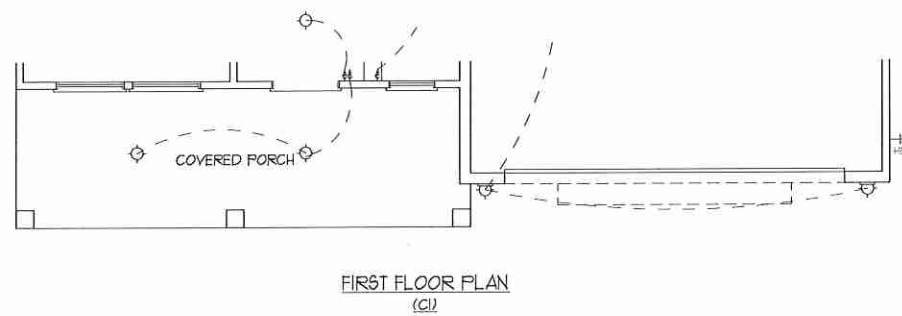
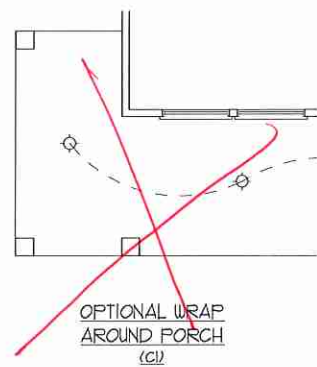
DATE: OCTOBER 13, 2017  
 REV.: MARCH 30, 2020  
 SCALE: 1/4" = 1'-0"  
 DRAWN BY:  
 ENGINEERED BY:  
 REVIEWED BY:  
**FIRST FLOOR ELECTRICAL PLAN - OPTIONS**



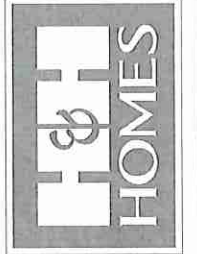
**ELECTRICAL LAYOUT NOTES:**

- 1) BLOCK AND USE FOR ALL CEILING FANS PER PLAN.
- 2) VANITY LIGHTS TO BE SET # 90" AFF. (TYP.)
- 3) ADDITIONAL EXTERIOR OUTLETS REQUIRED BY CODE TO BE LOCATED BY ELECTRICIAN.
- 4) PLACE SWITCHES 6" FROM ROUGH OPENINGS.

ELECTRICAL LEGEND	
	10 V OUTLET
	WALL MOUNT LIGHT
	CEILING MOUNT LIGHT
	PENDANT LIGHT
	RECESSED CAN LIGHT
	150 CAN LIGHT
	EYEBALL LIGHT
	FLUORESCENT LIGHT
	7 Lx4 FT, 4 FLUORESCENT LIGHT
	FLOOD LIGHT
	SWITCH
	3-WAY SWITCH
	4-WAY SWITCH
	DIMMER SWITCH
	CONDUIT FOR COMPONENT WIRING
	SPEAKER
	DOORBELL CHIME
	10 V SMOKE DETECTOR
	CO DETECTOR
	EXHAUST FAN
	LOW VOLTAGE PANEL
	CEILING FAN
	CEILING FAN w/ LIGHT



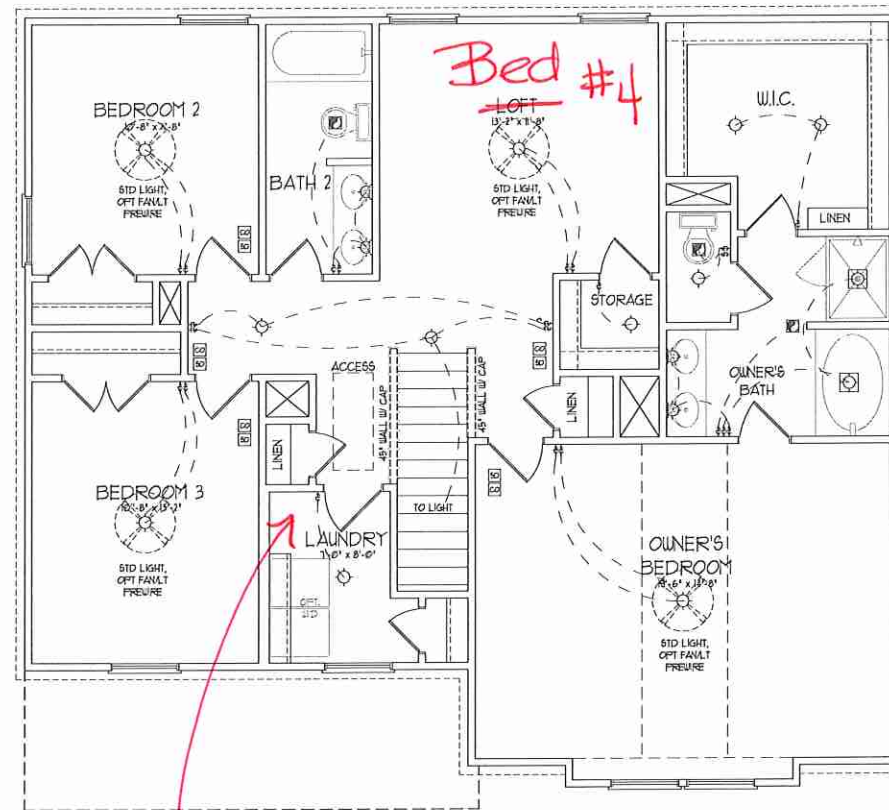
**J.S. THOMPSON  
ENGINEERING, INC.**  
650 WAKE AVE., SUITE 104  
RALEIGH, NC 27605  
PHONE: (919) 788-9919  
FAX: (919) 788-9921  
N.C. LICENSE NO. 424733



PRICES, PROMOTIONS, INCENTIVES, FEATURES, OPTIONS, FLOOR PLANS, ELEVATIONS, DESIGNS, MATERIALS AND DIMENSIONS ARE SUBJECT TO CHANGE WITHOUT NOTICE AND MAY VARY IN ACTUAL CONSTRUCTION. ACTUAL POSITION OF HOUSE ON LOT WILL BE DETERMINED BY THE SITE PLAN AND PLOT PLAN. THIS DOCUMENT IS THE PROPERTY OF H&H HOMES. ANY REPRODUCTION, ADAPTATION, OR DISPLAY OF THIS PLAN IS STRICTLY PROHIBITED. SEE NEW YORK STATE CONSULTING ENGINEER ACT FOR FURTHER DETAILS OF PROFESSIONAL REQUIREMENTS.

**H&H HOMES, INC.**  
TOPSAIL

DATE: OCTOBER 13, 2017  
REV.: MARCH 30, 2020  
SCALE: 1/4"=1'-0"  
DRAWN BY:  
ENGINEERED BY:  
REVIEWED BY:  
FIRST FLOOR  
ELECTRICAL  
PARTIAL PLANS  
E-1.2



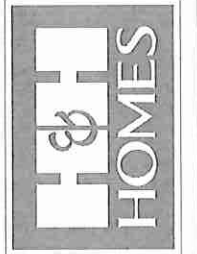
SECOND FLOOR PLAN

**ELECTRICAL LAYOUT NOTES:**

- 1) BLOCK AND USE FOR ALL CEILING FANS PER FLA.
- 2) WANTY LIGHTS TO BE SET # 30" AFF. (TYP)
- 3) ADDITIONAL EXTERIOR OUTLETS REQUIRED BY CODE TO BE LOCATED BY ELECTRICIAN.
- 4) PLACE SWITCHES 6" FROM ROUGH OPENINGS.

ELECTRICAL LEGEND	
	120 V OUTLET
	WALL MOUNT LIGHT
	CEILING MOUNT LIGHT
	PENDANT LIGHT
	RECESSED CAN LIGHT
	MINI CAN LIGHT
	EYEBALL LIGHT
	FLUORESCENT LIGHT
	2 LAYER 4' FLUORESCENT LIGHT
	FLOOD LIGHT
	SWITCH
	3-WAY SWITCH
	4-WAY SWITCH
	DIMMER SWITCH
	CONDUIT FOR COMPONENT WIRING
	SFEAKER
	DOORBELL CHIME
	120 V SMOKE DETECTOR
	CO DETECTOR
	EXHAUST FAN
	LOW VOLTAGE PANEL
	CEILING FAN
	CEILING FAN w/ LIGHT

**J.S. THOMPSON ENGINEERING, INC.**  
 606 WALDEAVE, SUITE 104  
 RALEIGH, NC 27605  
 PHONE: (919) 788-9919  
 FAX: (919) 789-9211  
 N.C. LICENSE NO. C-1133



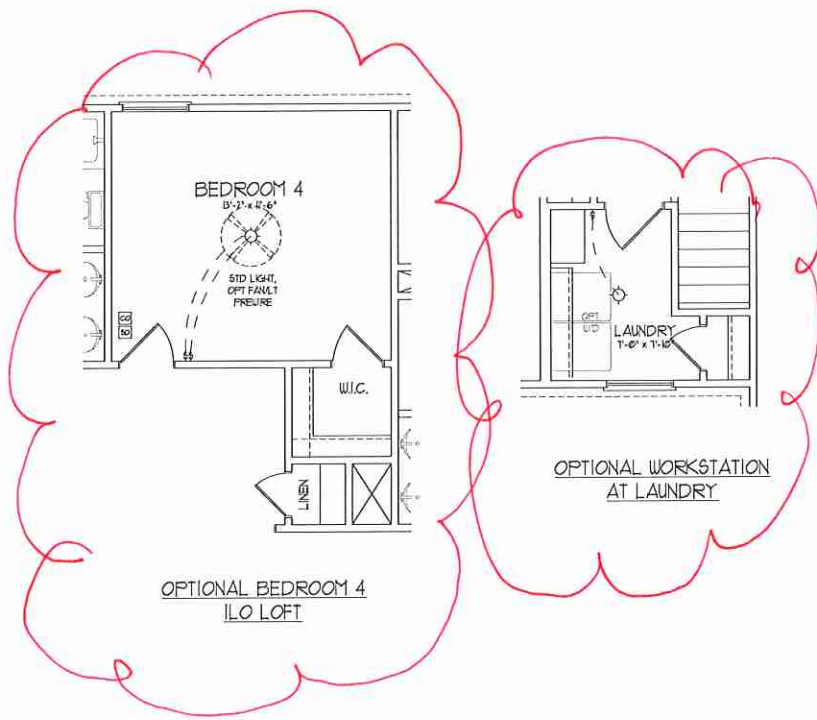
PRICES, PROMOTIONS, INCENTIVES, FEATURES, OPTIONS, FLOOR PLANS, ELEVATIONS, DESIGN, MATERIALS, FINISHES, SCHEDULES, DIMENSIONS, WITHOUT NOTICE, CHANGE, OMISSIONS AND/OR OMISSIONS ARE ESTIMATED AND MAY VARY IN ACTUAL CONSTRUCTION. ACTUAL POSITION OF HOUSE ON LOT WILL BE DETERMINED BY THE SITE PLAN AND OLD PLAN RECORDS. H&H HOMES, INC. IS THE SOLE PROPRIETOR OF THESE FLOOR PLANS AND THE COPYRIGHTED PROPERTY OF H&H HOMES, INC. ANY USE, REPRODUCTION, ADAPTATION, OR DISPLAY OF THE PLANS IS STRICTLY PROHIBITED WITHOUT THE WRITTEN PERMISSION OF H&H HOMES, INC. CURRENT DETAILS COPYRIGHT 2017 H&H HOMES.

H&H HOMES, INC.  
 TOPSAIL

DATE: OCTOBER 13, 2017  
 REV.: MARCH 30, 2020  
 SCALE: 1/4"=1'-0"  
 DRAWN BY:  
 ENGINEERED BY:  
 REVIEWED BY:

SECOND FLOOR ELECTRICAL PLAN

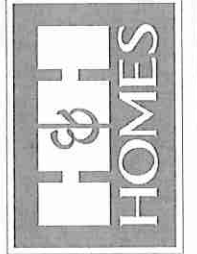
~~OPTIONAL WINDOW AT  
BEDROOM 4~~



~~OPTIONAL OPEN RAIL  
I/O 45" WALL W/ CAP~~

ELECTRICAL LEGEND	
	10 V OUTLET
	WALL MOUNT LIGHT
	CEILING MOUNT LIGHT
	PENDANT LIGHT
	RECESSED CAN LIGHT
	MRB CAN LIGHT
	EYEBALL LIGHT
	FLUORESCENT LIGHT
	2 LAMP, 4' FLUORESCENT LIGHT
	FLOOD LIGHT
	SWITCH
	3-WAY SWITCH
	4-WAY SWITCH
	DIMMER SWITCH
	CONDUIT FOR COMPONENT WIRING
	SPEAKER
	DOORBELL CHIME
	I/O V SMOKE DETECTOR
	CO DETECTOR
	EXHAUST FAN
	LOW VOLTAGE PANEL
	CEILING FAN
	CEILING FAN W/ LIGHT

**J.S. THOMPSON  
ENGINEERING, INC**  
60 WARE AVE. SUITE 104  
RALEIGH, NC 27605  
PHONE: (919) 786-6910  
FAX: (919) 786-6921  
N.C. LICENSE NO.: C-1133



PRICES, PROMOTIONS, INCENTIVES, FEATURES, OPTIONS, FLOOR PLANS, ELEVATIONS, DESIGNS, MATERIALS AND DIMENSIONS ARE SUBJECT TO CHANGE WITHOUT NOTICE AND MAY VARY IN ACTUAL CONSTRUCTION. ACTUAL POSITION OF HOUSE ON LOT WILL BE DETERMINED BY THE SITE PLAN AND PLOT PLAN. CONCEPTS IN FLOOR PLANS ARE THE COPYRIGHTED PROPERTY OF H&H HOMES. ANY USE, REPRODUCTION, ADAPTATION, OR DISPLAY OF THE PLANS IS STRICTLY PROHIBITED. SEE NEW HOME SALES CONSULTANT FOR CURRENT DETAILS. COPYRIGHT © 2017 H&H HOMES

H&H HOMES, INC.  
TOPSAIL

DATE: OCTOBER 13, 2017  
REV.: MARCH 30, 2020  
SCALE: 1/4" = 1'-0"  
DRAWN BY:  
ENGINEERED BY:  
REVIEWED BY:

SECOND FLOOR  
ELECTRICAL  
PLAN OPTIONS

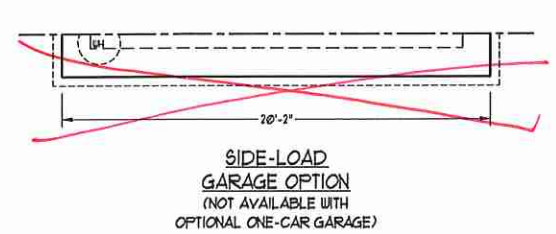
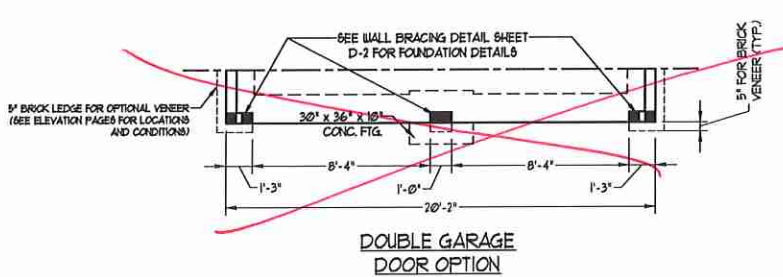
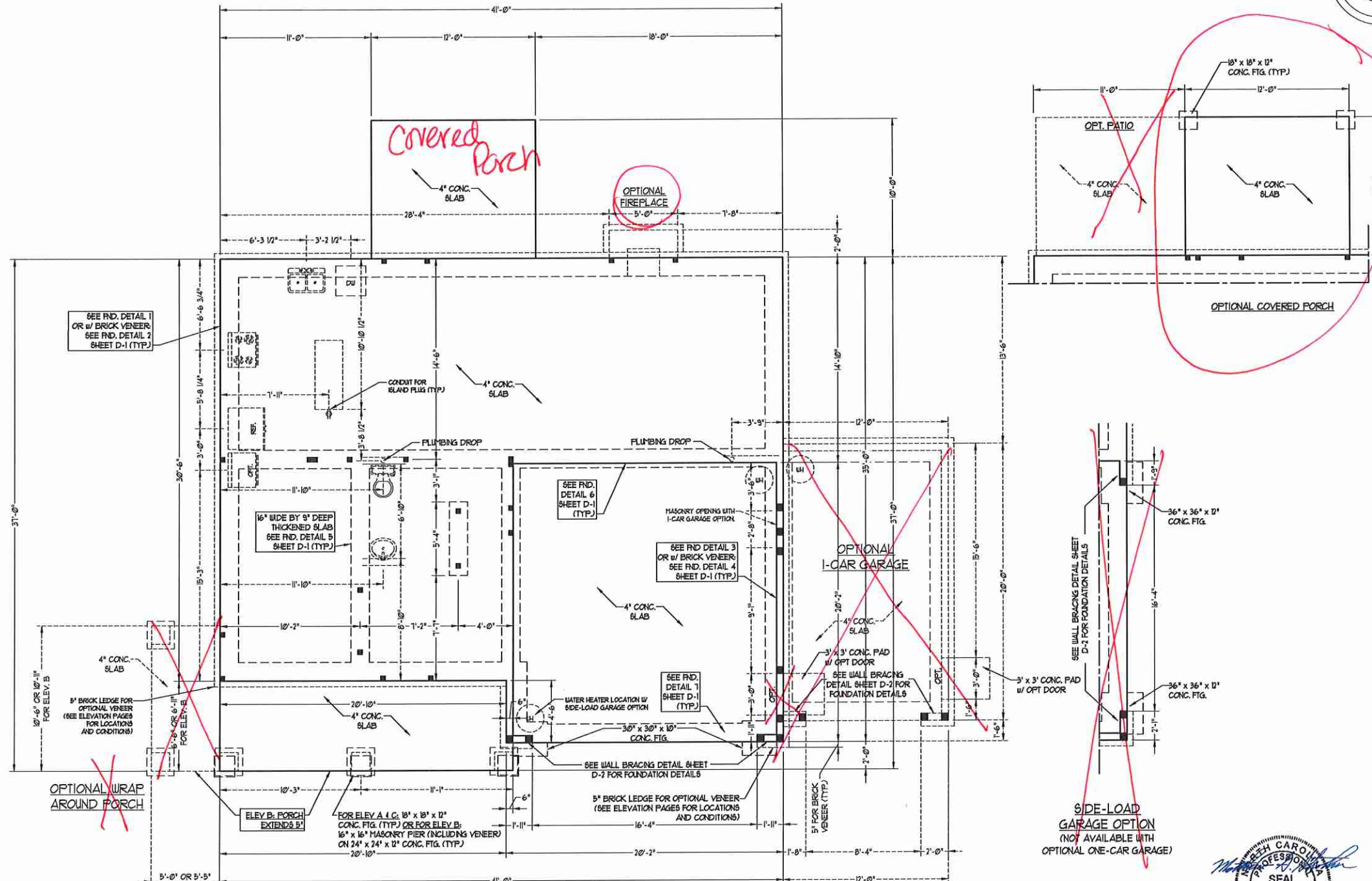
E-2.1

**50 MPH ULTIMATE DESIGN WIND SPEED NOTES FOR LESS THAN 30' MEAN ROOF HEIGHT:**

- ENGINEER'S SEAL APPLIES ONLY TO STRUCTURAL COMPONENTS. ENGINEER'S SEAL DOES NOT CERTIFY DIMENSIONAL ACCURACY OR ARCHITECTURAL LAYOUT INCLUDING ROOF SYSTEM.
- STRUCTURAL DESIGN PER NORTH CAROLINA RESIDENTIAL CODE 2018 EDITION WITH SPECIAL CONSIDERATION TO CHAPTER 45 (WIND LOADS) FOR 50 MPH WINDS.
- BUILDER IS TO PROVIDE FRAMING CONNECTIONS AS REQUIRED BY CHAPTER 45 (WIND LOADS) FOR 50 MPH WINDS) OF THE NORTH CAROLINA RESIDENTIAL CODE, 2018 EDITION.
- FOUNDATION ANCHORAGE TO COMPLY WITH SECTION 4504 OF THE NORTH CAROLINA RESIDENTIAL CODE, 2018 EDITION.
- MEAN ROOF HEIGHT IS LESS THAN 30 FEET.
- WALL CLADDING DESIGNED FOR 4.5 PSF AND -3.0 PSF (-). INDICATE POSITIVE / NEGATIVE PRESSURE (TYP).
- ROOF CLADDING DESIGNED FOR 4.2 PSF AND -1.8 PSF FOR ROOF PITCHES 1/12 TO 2/12 AND 4.4 PSF AND -3.1 PSF FOR ROOF PITCHES 2.25/12 TO 1/2.
- 1/4" OSB SHEATHING IS REQUIRED ON ALL EXTERIOR WALLS.
- WALLS TO BE BRACED IN ACCORDANCE WITH SECTION R602.3 OF THE NORTH CAROLINA RESIDENTIAL CODE, 2018 EDITION AND AS NOTED ON PLANS.
- ENERGY EFFICIENCY COMPLIANCE AND INSULATION VALUES OF THE BUILDING TO BE IN ACCORDANCE WITH CHAPTER 1 OF THE NRC, 2018 EDITION.

**100 MPH ULTIMATE DESIGN WIND SPEED NOTES FOR LESS THAN 30' MEAN ROOF HEIGHT:**

- ENGINEER'S SEAL APPLIES ONLY TO STRUCTURAL COMPONENTS. ENGINEER'S SEAL DOES NOT CERTIFY DIMENSIONAL ACCURACY OR ARCHITECTURAL LAYOUT INCLUDING ROOF SYSTEM.
- STRUCTURAL DESIGN PER NORTH CAROLINA RESIDENTIAL CODE, 2018 EDITION.
- INSTALL 1/2" ANCHOR BOLTS 1'-0" O.C. AND WITHIN 1'-0" FROM END OF EACH CORNER. ANCHOR BOLTS MUST EXTEND A MINIMUM OF 1" INTO MASONRY OR CONCRETE. LOCATE BOLT WITHIN MIDDLE THIRD OF FLUTE WIDTH.
- MEAN ROOF HEIGHT IS LESS THAN 30 FEET.
- EXTERIOR WALLS DESIGNED FOR 100 MPH WINDS.
- WALL CLADDING DESIGNED FOR 4.5 PSF AND -3.0 PSF (-). INDICATE POSITIVE / NEGATIVE PRESSURE (TYP).
- ROOF CLADDING DESIGNED FOR 4.3 PSF AND -1.8 PSF FOR ROOF PITCHES 1/12 TO 2/12 AND 4.5 PSF AND -3.6 PSF FOR ROOF PITCHES 2.25/12 TO 1/2.
- INSTALL 1/4" OSB SHEATHING ON ALL EXTERIOR WALLS OF ALL STORES IN ACCORDANCE WITH SECTION R602.3 OF THE NRC, 2018 EDITION. SEE THE WALL BRACING NOTES AND DETAILS SHEET FOR MORE INFORMATION.
- ENERGY EFFICIENCY COMPLIANCE AND INSULATION VALUES OF THE BUILDING TO BE IN ACCORDANCE WITH CHAPTER 1 OF THE NRC, 2018 EDITION.
- REFER TO NOTES AND DETAIL SHEETS FOR ADDITIONAL STRUCTURAL INFORMATION.



**J.S. THOMPSON ENGINEERING, INC.**  
 606 WADE AVE., SUITE 104 RALEIGH, NC 27605  
 PHONE: (919) 789-9919 FAX: (919) 789-9921  
 N.C. LICENSE NO. C1133

TOPSAIL  
 H&H HOMES

SEAL  
 33736  
 ENGINEER  
 MATTHEW G. STROTHER  
 11/2/2020

DATE: NOVEMBER 2, 2020
SCALE: 1/4" = 1'-0"
DRAWN BY: H&H HOMES
ENGINEERED BY: WFB

SHEET 2 OF 8  
 S-1b  
 MONO SLAB  
 FOUNDATION PLAN



**BRACED WALL DESIGN NOTES:**

- BRACED WALL DESIGN PER SECTION R607.10 OF THE NRC 2018 EDITION.
- C5-W5P REFERS TO 'CONTINUOUS SHEATHING - WOOD STRUCTURAL PANELS' CONTRACTOR IS TO INSTALL 1/4" OSB ON ALL EXTERIOR WALLS ATTACHED w/ 8d NAILS SPACED 6" O.C. ALONG PANEL EDGES AND 12" O.C. IN THE FIELD.
- GB REFERS TO 'GYPSUM BOARD' CONTRACTOR IS TO INSTALL 1/2" (MIN) GYPSUM BOARD WHERE NOTED ON THE PLANS. FASTEN GB WITH 1 1/4" SCREWS OR 1 5/8" NAILS SPACED 1" O.C. ALONG PANEL EDGES AND IN THE FIELD INCLUDING TOP AND BOTTOM FLATES.
- BRACED WALL DESIGN APPLIED IN WIND ZONES UP TO 130 MPH. FOR HIGH WIND ZONES, BRACE WALLS ARE TO BE CONSTRUCTED IN ACCORDANCE WITH CHAPTER 45 OF THE NRC 2018 EDITION. SEE NOTES AND DETAIL SHEETS FOR ADDITIONAL BRACED WALL INFORMATION.

**NOTE: ALL EXTERIOR WALLS AND ATTIC WALLS ARE TO BE 2 x 6 @ 16" O.C. (UNO). 2 x 4 @ 16" O.C. EXTERIOR WALLS MAY BE CONSTRUCTED IN LIEU OF 2 x 6 WALLS (UNO). ALL INTERIOR LOAD BEARING WALLS ARE TO BE 2 x 4 @ 16" O.C. (UNO) AND NON-LOAD BEARING INTERIOR WALLS ARE TO BE 2 x 4 @ 24" O.C. (UNO).**

**BRACED WALL DESIGN**

RECTANGLE A		RECTANGLE B	
SIDE 1A (FRONT LOAD)	SIDE 1B	SIDE 1B	SIDE 1B
METHOD: C5-W5P/FF/GB	METHOD: C5-W5P/FF	METHOD: C5-W5P/FF	METHOD: C5-W5P/FF
TOTAL REQUIRED LENGTH: 15'	TOTAL REQUIRED LENGTH: 456'	TOTAL REQUIRED LENGTH: 456'	TOTAL REQUIRED LENGTH: 456'
TOTAL PROVIDED LENGTH: 216'	TOTAL PROVIDED LENGTH: 6'	TOTAL PROVIDED LENGTH: 6'	TOTAL PROVIDED LENGTH: 6'
SIDE 2A	SIDE 2B	SIDE 2B	SIDE 2B
METHOD: C5-W5P	METHOD: C5-W5P	METHOD: C5-W5P	METHOD: C5-W5P
TOTAL REQUIRED LENGTH: 15'	TOTAL REQUIRED LENGTH: 456'	TOTAL REQUIRED LENGTH: 456'	TOTAL REQUIRED LENGTH: 456'
TOTAL PROVIDED LENGTH: 206.6'	TOTAL PROVIDED LENGTH: 12'	TOTAL PROVIDED LENGTH: 12'	TOTAL PROVIDED LENGTH: 12'
SIDE 3A (SIDE LOAD)	SIDE 3B	SIDE 3B	SIDE 3B
METHOD: C5-W5P/FF/GB	METHOD: C5-W5P	METHOD: C5-W5P	METHOD: C5-W5P
TOTAL REQUIRED LENGTH: 1755'	TOTAL REQUIRED LENGTH: 315'	TOTAL REQUIRED LENGTH: 315'	TOTAL REQUIRED LENGTH: 315'
TOTAL PROVIDED LENGTH: 207'	TOTAL PROVIDED LENGTH: 1558'	TOTAL PROVIDED LENGTH: 1558'	TOTAL PROVIDED LENGTH: 1558'
SIDE 4A	SIDE 4B	SIDE 4B	SIDE 4B
METHOD: C5-W5P	METHOD: C5-W5P/GB	METHOD: C5-W5P/GB	METHOD: C5-W5P/GB
TOTAL REQUIRED LENGTH: 1755'	TOTAL REQUIRED LENGTH: 2074'	TOTAL REQUIRED LENGTH: 2074'	TOTAL REQUIRED LENGTH: 2074'
TOTAL PROVIDED LENGTH: 35'	TOTAL PROVIDED LENGTH: 3145'	TOTAL PROVIDED LENGTH: 3145'	TOTAL PROVIDED LENGTH: 3145'

**TABLE R607.15**

MINIMUM NUMBER OF FULL HEIGHT STUDS AT EACH END OF HEADERS IN EXTERIOR WALLS

HEADER SPAN (FEET)	MAXIMUM STUD SPACING (INCHES) (PER TABLE R607.15)	
	16	24
UP TO 3'	1	1
4'	2	1
6'	3	2
8'	5	3
10'	6	4

**STRUCTURAL NOTES:**

- ALL FRAMING LUMBER TO BE SPF # (UNO). ALL TREATED LUMBER TO BE 61P # (UNO).
- ALL LOAD BEARING HEADERS TO BE (2) 2 x 6 (UNO).
- INSTALL AN EXTRA JOIST UNDER WALLS PARALLEL TO FLOOR JOISTS WHERE NOTED ON THE PLANS. WINDOW AND DOOR HEADERS TO BE SUPPORTED w/ (1) JACK STUD AND (1) KING STUD EA. END (UNO). SEE TABLE R607.15 FOR ADDITIONAL KING STUD REQUIREMENTS.
- SQUARES DENOTE POINT LOADS WHICH REQUIRE SOLID BLOCKING TO GIRDER OR FOUNDATION. ALL SQUARES TO BE (2) STUDS (UNO).
- FOR HIGH WIND ZONES, ALL EXTERIOR WALLS TO BE SHEATHED WITH 1/4" OSB SHEATHING WITH JOINTS BLOCKED AND SECURED WITH 8d NAILS AT 3" O.C. ALONG EDGES AND 6" O.C. IN THE FIELD.
- FOR HIGH WIND ZONES, SECURE ALL EXTERIOR WALL SHEATHING PANELS TO DOUBLE TOP PLATES, BANDS, JOISTS, AND GIRDERS WITH (2) ROWS OF 8d NAILS STAGGERED AT 3" O.C. PANELS SHALL EXTEND 12" BEYOND CONSTRUCTION JOINTS AND SHALL OVERLAP GIRDERS AND DOUBLE BILL PLATES THEIR FULL DEPTH.
- ALL 4 x 4 POSTS SHALL BE ANCHORED TO SLABS w/ BRIMSON ABU44 POST BASES (OR EQUAL) AND 6 x 6 POSTS w/ ABU66 POST BASES (OR EQUAL) (UNO). ALL 4 x 4 AND 6 x 6 POSTS TO BE INSTALLED WITH 100 LB CAPACITY URLET CONNECTORS AT TOP (UNO).
- FOR FIBERGLASS, ALUMINUM, OR COLUMN ENG. BY OTHERS, SECURE TO SLAB w/ (2) METAL ANGLES USING 2" CONC. SCREWS. FASTEN ANGLES TO COLUMNS w/ 1/4" THROUGH BOLTS w/ NUTS AND WASHERS. LOCATE ANGLES ON OPPOSITE SIDES OF COLUMN. THROUGH BOLTS MUST BE INSTALLED PRIOR TO SETTING COLUMN.
- REFER TO NOTES AND DETAIL SHEETS FOR ADDITIONAL STRUCTURAL INFORMATION.

**NOTE:**

BCI 45004-10 I-JOISTS MAY BE USED IN LIEU OF TJI 110 I-JOISTS AT THE DEPTH AND SPACING NOTED ON THE PLAN.

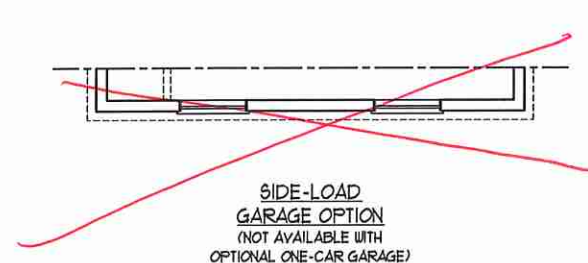
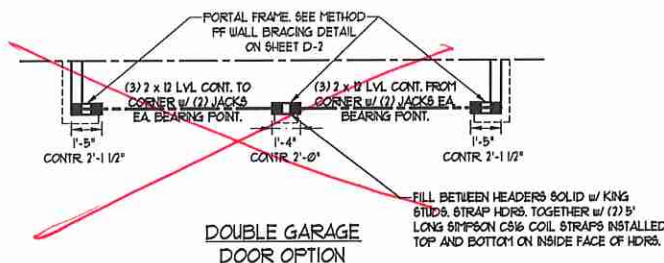
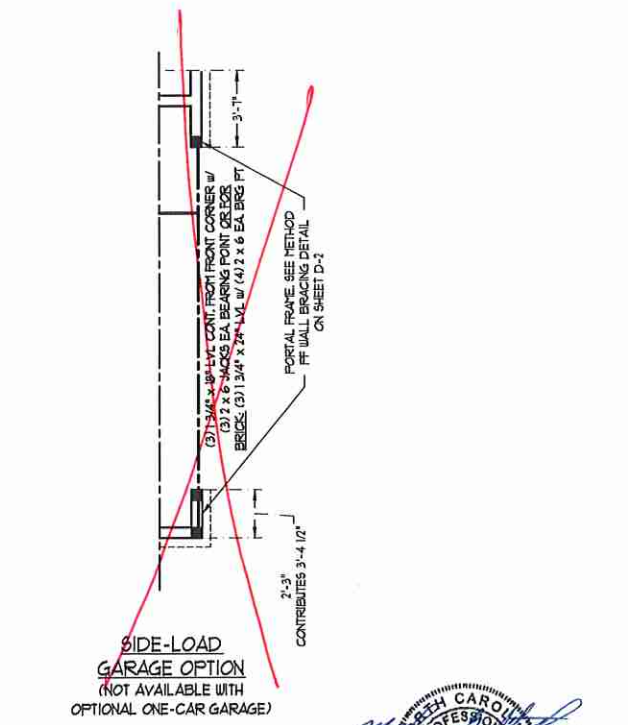
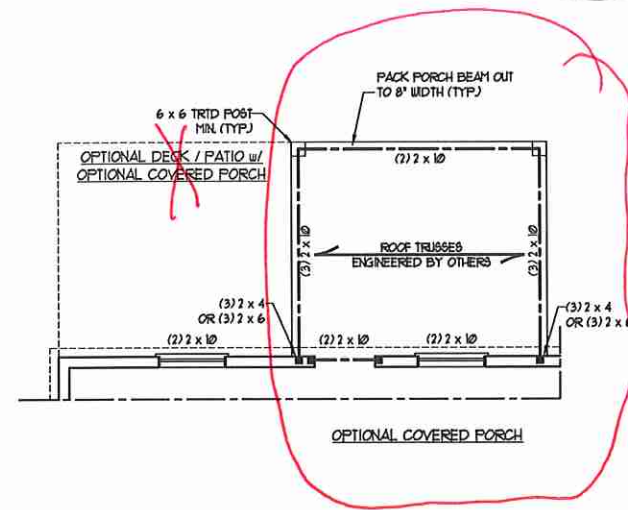
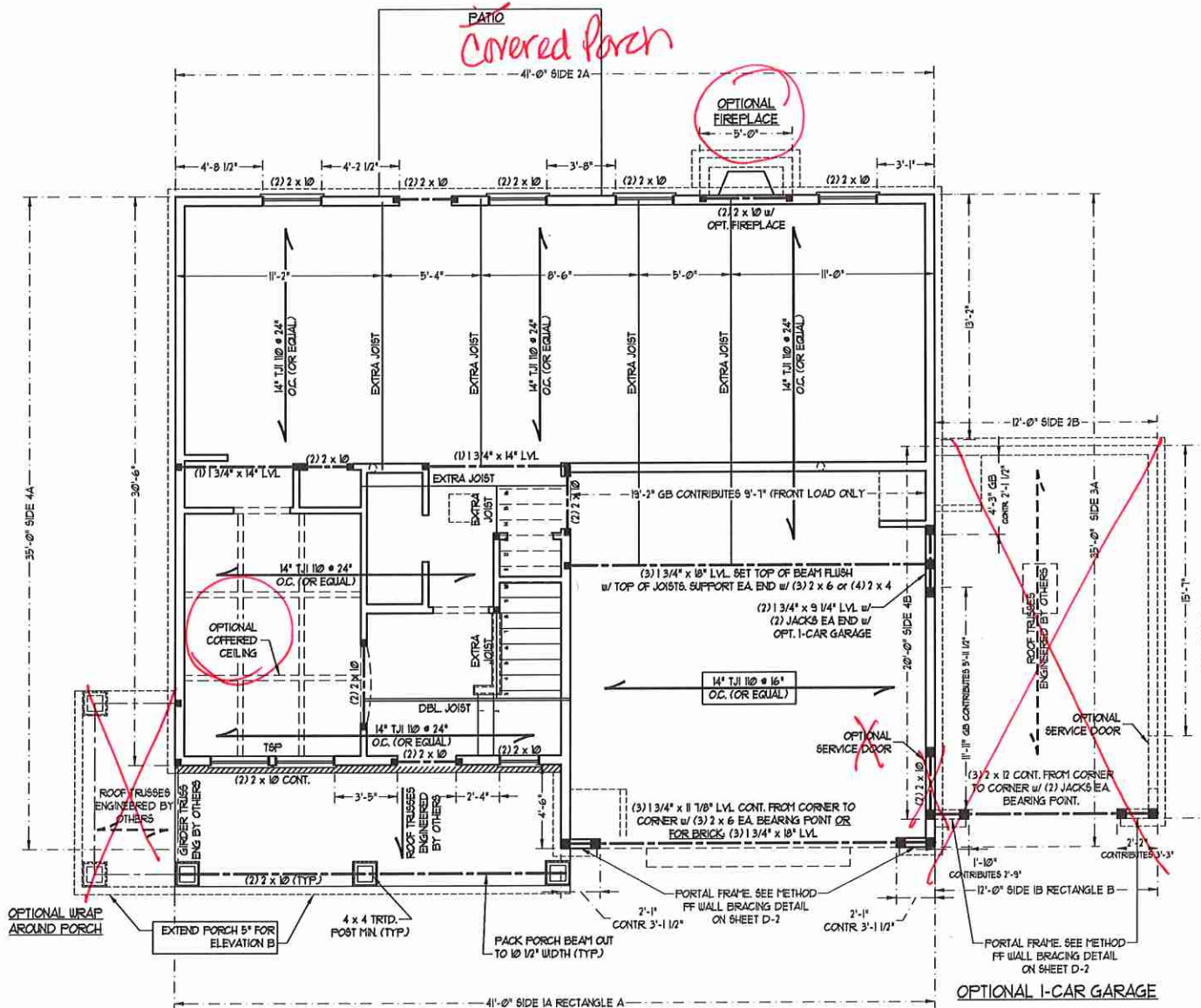
D&P - DOUBLE STUD POCKET  
T&P - TRIPLE STUD POCKET

**LINTEL SCHEDULE FOR BRICK/NATURAL STONE SUPPORT**

LENGTH (FT.)	SIZE OF LINTEL
UP TO 4 FT.	L 3 1/2 x 3 1/2 x 1/4
4-8	L 5 x 3 1/2 x 5/16 LLV
8 AND GREATER	L 6 x 4 x 5/16 LLV

**BRICK SUPPORT NOTES:**

- LINTEL SCHEDULE APPLIES TO ALL OPENINGS IN BRICK VENEER (UNO). SEE ARCH DWGS. FOR SIZE AND LOCATION OF OPENINGS.
- (LLV) - LONG LEG VERTICAL
- LENGTH = CLEAR OPENING
- EMBED ALL ANGLE IRONS MIN. 4" EACH SIDE INTO VENEER TO PROVIDE BEARING.
- FOR ALL HEADERS 8'-0" AND GREATER IN LENGTH, ATTACH STEEL ANGLE TO HEADER w/ 1/2" LAG SCREWS @ 12" O.C. STAGGERED.
- FOR ALL BRICK SUPPORT @ ROOF LINES, FASTEN (2) 2 x 10 BLOCKING BETWEEN STUDS w/ (4) 12d NAILS PER FLY. FASTEN A 6" x 4" x 5/16" STEEL ANGLE TO (2) 2 x 10 BLOCKING w/ (2) 1/2" LAG SCREWS @ 12" O.C. STAGGERED. SEE SECTION R1033.21 OF THE 2018 NRC FOR ADDITIONAL BRICK SUPPORT INFORMATION.
- PRECAST REINFORCED CONCRETE LINTEL6 ENGINEERED BY OTHERS MAY BE USED IN LIEU OF STEEL LINTELS.



**J.S. THOMPSON ENGINEERING, INC.**  
606 WADE AVE., SUITE 104 RALEIGH, NC 27605  
PHONE: (919) 789-9919 FAX: (919) 789-9921  
N.C. LICENSE NO.: C1733

**TOPSAIL H&H HOMES**

PROFESSIONAL ENGINEER  
SEAL 33738  
MATHIEW G. STROTHER  
11/2/2020

DATE: NOVEMBER 2, 2020  
SCALE: 1/4" = 1'-0"  
DRAWN BY: H&H HOMES  
ENGINEERED BY: WTB

SHEET 4 OF 8  
S-2  
SECOND FLOOR FRAMING PLAN

**NOTE: ALL EXTERIOR WALLS AND ATTIC WALLS ARE TO BE 2 x 6 @ 16" O.C. (UNO). 2 x 4 @ 16" O.C. EXTERIOR WALLS MAY BE CONSTRUCTED IN LIEU OF 2 x 6 WALLS (UNO). ALL INTERIOR LOAD BEARING WALLS ARE TO BE 2 x 4 @ 16" O.C. (UNO) AND NON-LOAD BEARING INTERIOR WALLS ARE TO BE 2 x 4 @ 24" O.C. (UNO).**

**BRACED WALL DESIGN NOTES:**

- BRACED WALL DESIGN PER SECTION R602.10 OF THE NRC 2018 EDITION.
- C5-WSP REFERS TO "CONTINUOUS SHEATHING - WOOD STRUCTURAL PANELS" CONTRACTOR IS TO INSTALL 1/2" OSB ON ALL EXTERIOR WALLS ATTACHED w/ 8d NAILS SPACED 6" O.C. ALONG PANEL EDGES AND 12" O.C. IN THE FIELD.
- \*S8 REFERS TO "GYPSUM BOARD" CONTRACTOR IS TO INSTALL 1/2" (5/8" GYPSUM WALL BOARD WHERE NOTED ON THE PLANS. FASTEN GB WITH 1 1/4" SCREWS OR 1 5/8" NAILS SPACED 12" O.C. ALONG PANEL EDGES AND IN THE FIELD INCLUDING TOP AND BOTTOM FLATES.
- BRACED WALL DESIGN APPLIED IN WIND ZONES UP TO 130 MPH. FOR HIGH WIND ZONES, BRACE WALLS ARE TO BE CONSTRUCTED IN ACCORDANCE WITH CHAPTER 45 OF THE NRC 2018 EDITION. SEE NOTES AND DETAIL SHEETS FOR ADDITIONAL BRACED WALL INFORMATION.

**NOTE:**

- PER SECTION R602.10.3.2 OF THE 2018 NRC, THE AMOUNT OF BRACING ON THE SECOND FLOOR EXCEEDS THE AMOUNT REQUIRED FOR THE FIRST FLOOR AND NO BRACED WALL ANALYSIS IS REQUIRED.
- SHEATH ALL EXTERIOR WALLS WITH 1/2" OSB SHEATHING ATTACHED WITH 8d NAILS AT 6" O.C. ALONG PANEL EDGES AND 12" O.C. IN THE FIELD.

**LINTEL SCHEDULE FOR BRICK/NATURAL STONE SUPPORT**

LENGTH (FT.)	SIZE OF LINTEL
UP TO 4 FT.	L 3 1/2 x 3 1/2 x 1/4
4-8	L 5 x 3 1/2 x 5/16 LLV
8 AND GREATER	L 6 x 4 x 5/16 LLV

**BRICK SUPPORT NOTES:**

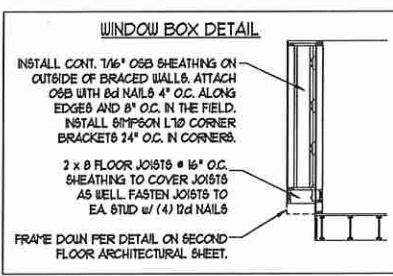
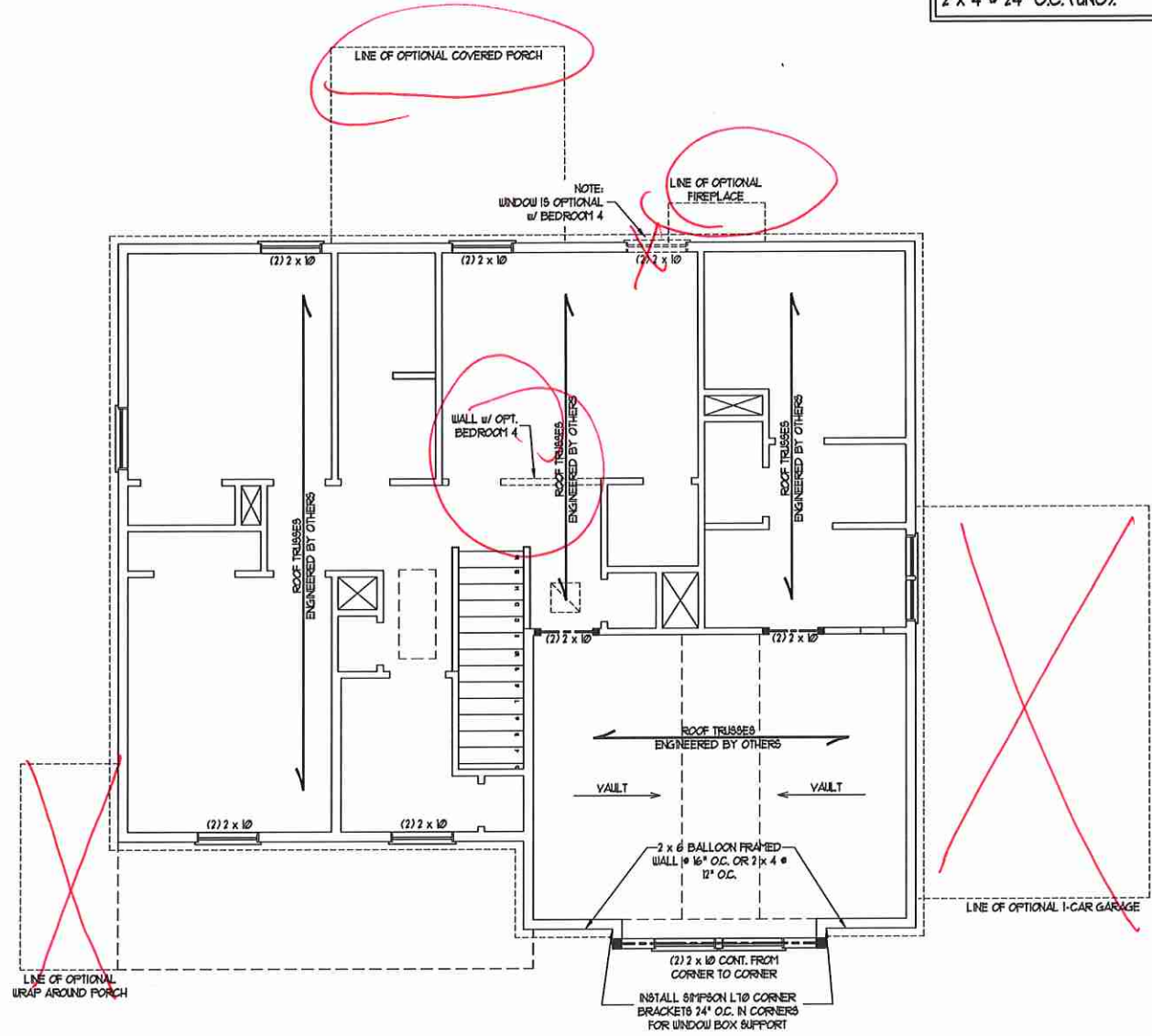
- LINTEL SCHEDULE APPLIES TO ALL OPENINGS IN BRICK VENEER (UNO). SEE ARCH DWS. FOR SIZE AND LOCATION OF OPENINGS.
- (LLV) = LONG LEG VERTICAL LENGTH = CLEAR OPENING
- WEDGED ALL ANGLE IRONS MIN. 4" EACH SIDE INTO VENEER TO PROVIDE BEARING.
- FOR ALL HEADERS 8'-0" AND GREATER IN LENGTH, ATTACH STEEL ANGLE TO HEADER W/ 1/2" LAG SCREWS @ 12" O.C. STAGGERED.
- FOR ALL BRICK SUPPORT @ ROOF LINES, FASTEN (2) 2 x 10 BLOCKING BETWEEN STUDS w/ (4) 10d NAILS PER FLY. FASTEN A 6" x 4" x 5/16" STEEL ANGLE TO (2) 2 x 10 BLOCKING w/ (2) 1/2" LAG SCREWS @ 12" O.C. STAGGERED. SEE SECTION R103.8.2.1 OF THE 2018 NRC FOR ADDITIONAL BRICK SUPPORT INFORMATION.
- PRECAST REINFORCED CONCRETE LINELS ENGINEERED BY OTHERS MAY BE USED IN LIEU OF STEEL LINELS.

**TABLE R602.15 MINIMUM NUMBER OF FULL HEIGHT STUDS AT EACH END OF HEADERS IN EXTERIOR WALLS**

HEADER SPAN (FEET)	MAXIMUM STUD SPACING (INCHES) (PER TABLE R602.15)	
	16	24
UP TO 3'	1	1
4'	2	1
5'	3	2
10'	5	3
15'	6	4

**STRUCTURAL NOTES:**

- ALL FRAMING LUMBER TO BE SPF #1 (UNO).
- ALL TREATED LUMBER TO BE SYP #2 (UNO).
- ALL LOAD BEARING HEADERS TO BE (2) 2 x 6 (UNO).
- WINDOW AND DOOR HEADERS TO BE SUPPORTED w/ (1) JACK STUD AND (1) KING STUD EA END (UNO). SEE TABLE R602.15 FOR ADDITIONAL KING STUD REQUIREMENTS.
- SQUARES DENOTE POINT LOADS WHICH REQUIRE SOLID BLOCKING TO GIRDER OR FOUNDATION. ALL SQUARES TO BE (2) STUDS (UNO).
- FOR HIGH WIND ZONES, ALL EXTERIOR WALLS TO BE SHEATHED WITH 1/2" OSB SHEATHING WITH JOINTS BLOCKED AND SECURED WITH 8d NAILS AT 3" O.C. ALONG EDGES AND 6" O.C. IN THE FIELD.
- FOR HIGH WIND ZONES, SECURE ALL EXTERIOR WALL SHEATHING PANELS TO DOUBLE TOP PLATES, BANDS, JOISTS, AND GIRDERS WITH (2) ROWS OF 8d NAILS STAGGERED AT 3" O.C. PANELS SHALL EXTEND 12" BEYOND CONSTRUCTION JOINTS AND SHALL OVERLAP GIRDERS AND DOUBLE END PLATES THEIR FULL DEPTH. REFER TO NOTES AND DETAIL SHEETS FOR ADDITIONAL STRUCTURAL INFORMATION.



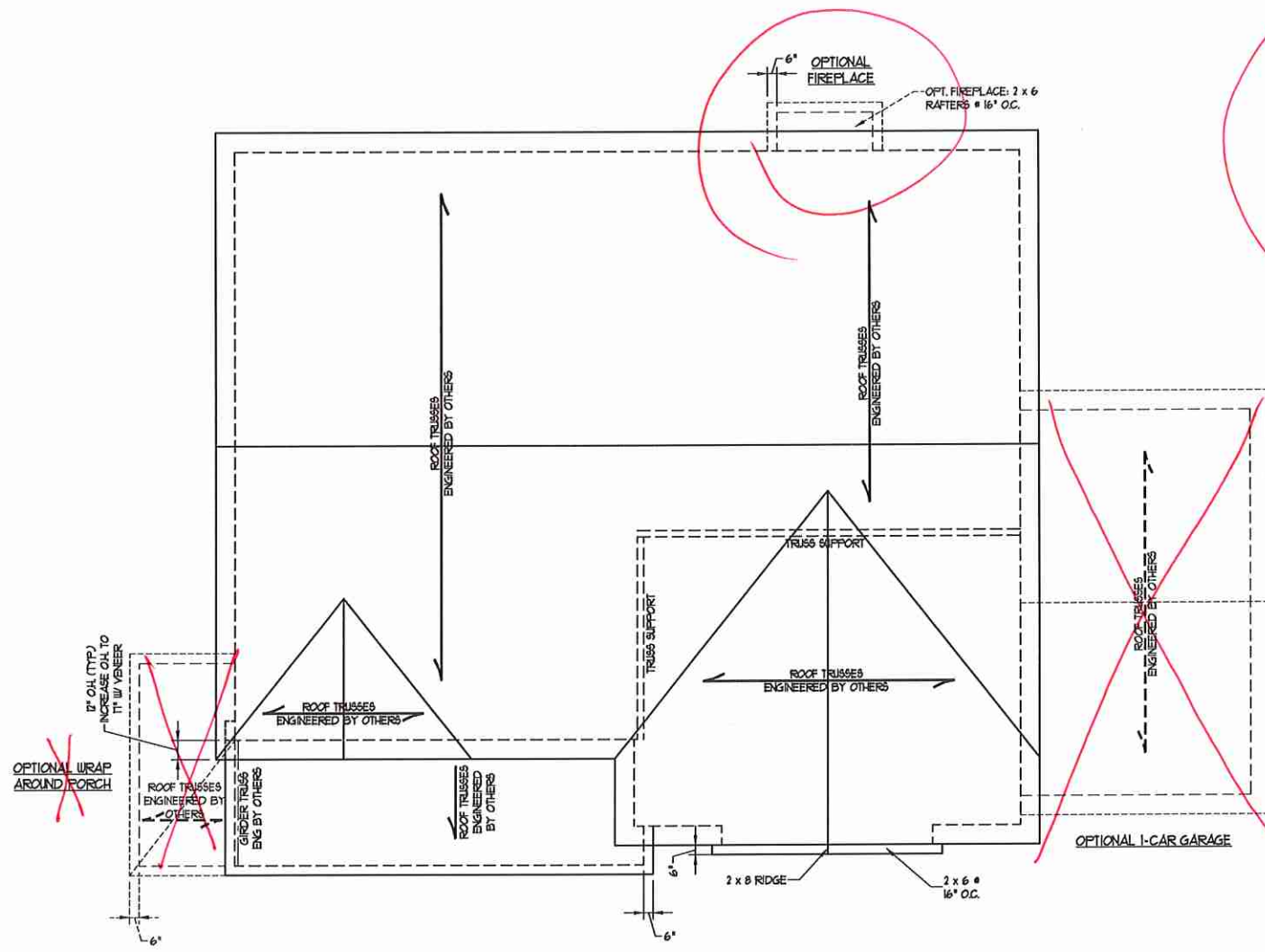
SEAL 33736  
 ENGINEER  
 MATTHEW G. STROTHER  
 11/2/2020

**J.S. THOMPSON ENGINEERING, INC.**  
 606 WADE AVE., SUITE 104 RALEIGH, NC 27605  
 PHONE (919) 7899919 FAX (919) 7899921  
 N.C. LICENSE NO. C-1713

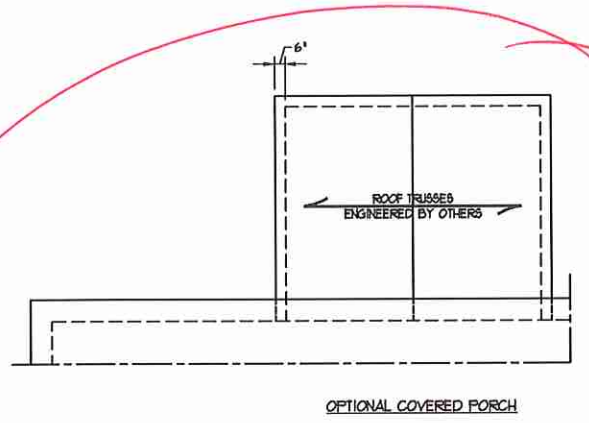
TOPSAIL H&H HOMES

DATE: NOVEMBER 2, 2020  
 SCALE: 1/4" = 1'-0"  
 DRAWN BY: H&H HOMES  
 ENGINEERED BY: WFB

SHEET 5 OF 8  
 S-3  
 ATTIC FLOOR FRAMING PLAN



ELEVATION B



- STRUCTURAL NOTES:**
1. ALL FRAMING LUMBER TO BE #2 SPF (INO).
  2. CIRCLES DENOTE (3) 2 x 4 POSTS FOR ROOF SUPPORT.
  3. FRAME DORMER WALLS ON TOP OF DOUBLE OR TRIPLE RAFTERS.
  4. HIP SPLICES ARE TO BE SPACED A MIN. OF 8'-0". FASTEN MEMBERS WITH THREE ROWS OF 12d NAILS @ 16" O.C. (TYP.)
  5. STICK FRAME OVER-FRAMED ROOF SECTIONS W/ 2 x 8 RIDGES, 2 x 6 RAFTERS @ 16" O.C. AND FLAT 2 x 10 VALLEYS OR USE VALLEY TRUSSES.
  6. FASTEN FLAT VALLEYS TO RAFTERS OR TRUSSES WITH SIMPSON H2BA HURRICANE TIES @ 32" O.C. MAX. PASS HURRICANE TIES THROUGH NOTCH IN ROOF SHEATHING. EACH RAFTER IS TO BE FASTENED TO THE FLAT VALLEY WITH A MIN. OF (6) 12d TOE NAILS.
  7. REFER TO SECTION R802.11 OF THE 2018 NRC FOR REQUIRED UPLIFT RESISTANCE AT RAFTERS AND TRUSSES.
  8. REFER TO NOTES AND DETAIL SHEETS FOR ADDITIONAL STRUCTURAL INFORMATION.

- BRICK SUPPORT NOTE:**
1. FASTEN (2) 2 x 10 BLOCKING BETWEEN WALL STUDS w/ (4) 12d NAILS PER PLY. FASTEN A 6" x 4" x 5/16" STEEL ANGLE TO (2) 2 x 10 BLOCKING w/ (2) 1/2" LAG SCREWS @ 12" O.C. STAGGERED. SEE SECTION R103.8.21 OF THE 2018 NRC FOR ADDITIONAL BRICK SUPPORT INFORMATION.
  2. WHERE ROOF SLOPES EXCEED 1:12, INSTALL 3" x 3" x 1/4" STEEL PLATE STOPS AT 24" O.C. PER SECTION R103.8.21 OF THE NORTH CAROLINA RESIDENTIAL CODE, 2018 EDITION.



**J.S. THOMPSON ENGINEERING, INC.**  
 600 WADE AVE., SUITE 104 RALEIGH, NC 27605  
 PHONE: (919) 789-9919 FAX: (919) 789-9921  
 N.C. LICENSE NO.: C-1733

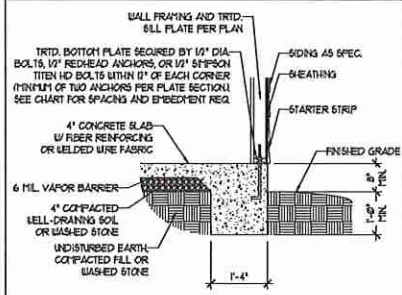
TOPSAIL  
 H&H HOMES

DATE: NOVEMBER 2, 2020  
 SCALE: 1/4" = 1'-0"  
 DRAWN BY: H&H HOMES  
 ENGINEERED BY: WFB

SHEET 7 OF 8  
 S-4b  
 ROOF FRAMING PLAN

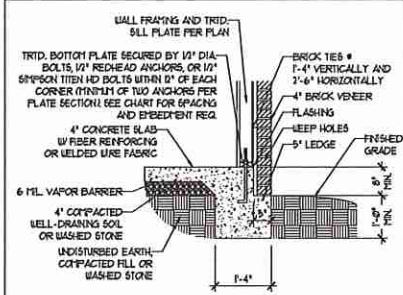
### MONOLITHIC SLAB DETAILS

DETAIL 1



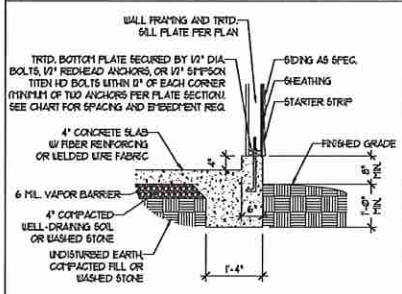
TYPICAL SLAB DETAIL

DETAIL 2



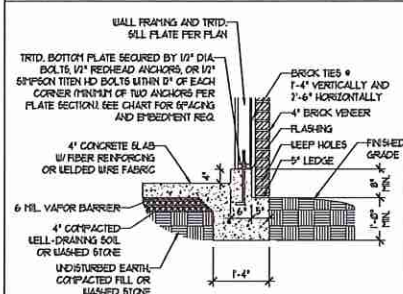
BRICK VENEER DETAIL

DETAIL 3



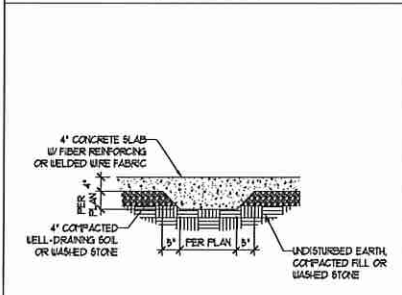
GARAGE CURB DETAIL

DETAIL 4



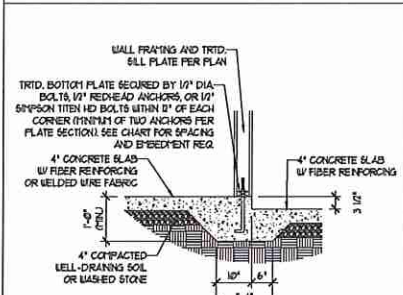
GARAGE CURB BRICK LEDGE DETAIL

DETAIL 5



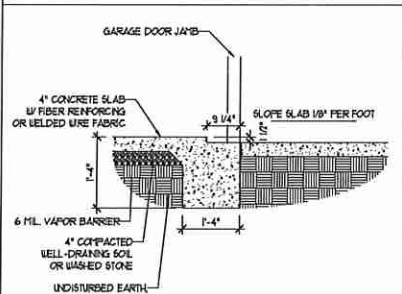
THICKENED SLAB DETAIL

DETAIL 6



STEP IN GARAGE DETAIL

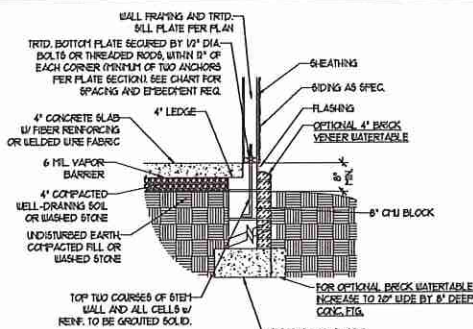
DETAIL 7



SLAB AT GARAGE DOOR DETAIL

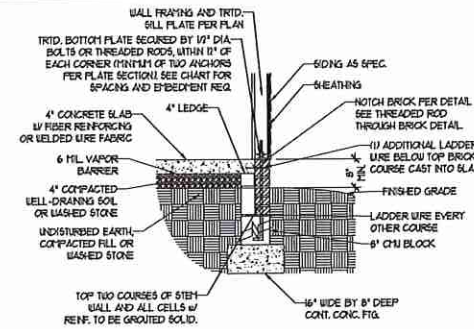
### STEMWALL DETAILS

DETAIL 1



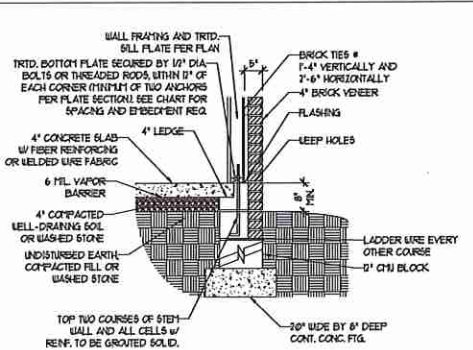
TYPICAL STEM WALL DETAIL (w/ OPTIONAL WATERTABLE)

OPTIONAL DETAIL 1



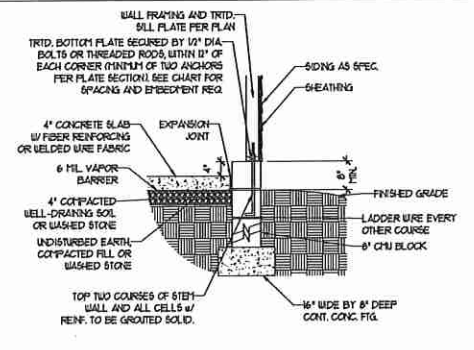
OPTIONAL STEM WALL DETAIL

DETAIL 2



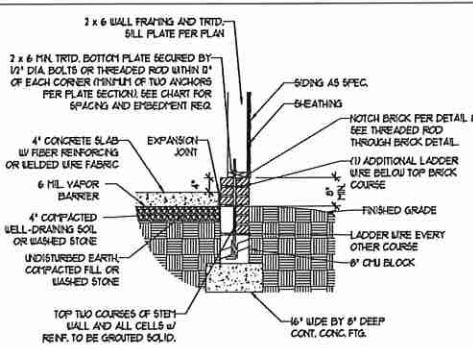
TYPICAL STEM WALL FND. w/ BRICK DETAIL

DETAIL 3



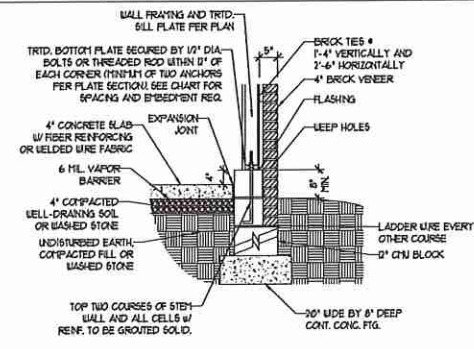
TYPICAL STEM WALL FND. DETAIL w/ CURB @ GARAGE

OPTIONAL DETAIL 3



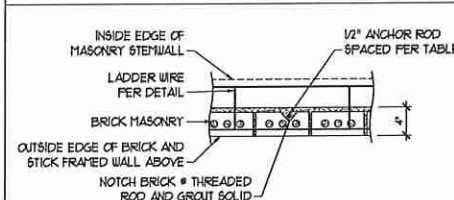
OPTIONAL STEM WALL FND. DETAIL w/ CURB @ GARAGE

DETAIL 4



TYPICAL STEM WALL FND. DETAIL w/ BRICK AND CURB @ GARAGE

DETAIL 8



THREADED ROD THROUGH BRICK MASONRY

### MASONRY STEMWALL SPECIFICATIONS

WALL HEIGHT (FEET)	MASONRY WALL TYPE			
	8" CMU	4" BRICK AND 4" CMU	4" BRICK AND 8" CMU	12" CMU
2 AND BELOW	UNGROUTED	GROUT SOLID	UNGROUTED	UNGROUTED
3	UNGROUTED	GROUT SOLID	UNGROUTED	UNGROUTED
4	GROUT SOLID	GROUT SOLID w/ #4 REBAR @ 48" O.C.	GROUT SOLID	GROUT SOLID w/ #4 REBAR @ 64" O.C.
5	GROUT SOLID w/ #4 REBAR @ 36" O.C.	NOT APPLICABLE	GROUT SOLID w/ #4 REBAR @ 36" O.C.	GROUT SOLID w/ #4 REBAR @ 64" O.C.
6	GROUT SOLID w/ #4 REBAR @ 24" O.C.	NOT APPLICABLE	GROUT SOLID w/ #4 REBAR @ 24" O.C.	GROUT SOLID w/ #4 REBAR @ 64" O.C.
7 AND GREATER	ENGINEERED DESIGN BASED ON SITE CONDITIONS			

#### STRUCTURAL NOTES:

- WALL HEIGHT MEASURED FROM TOP OF FOOTING TO TOP OF THE WALL.
- THE MULTIPLE WYTHES TOGETHER WITH LADDER WIRE AT 16" O.C. VERTICALLY.
- CHART APPLICABLE FOR HOUSE FOUNDATION ONLY. CONSULT ENGINEER FOR DESIGN OF GARAGE FOUNDATION NOT COMMON TO HOUSE.
- BACKFILL OF CLEAN 1 1/2" / 1/4" WASHED STONE IS ALLOWABLE.
- BACKFILL OF WELL DRAINED OR SAND - GRAVEL MIXTURE SOILS (45 Pcf/ft BELOW GRADE) CLASSIFIED AS GROUP 1 ACCORDING TO UNIFIED SOILS CLASSIFICATION SYSTEM IN ACCORDANCE WITH TABLE 4.05.2 OF THE 2018 INTERNATIONAL RESIDENTIAL CODE ARE ALLOWABLE.
- PREP SLAB PER RS06.21 AND RS06.22 BASE OF THE 2018 INTERNATIONAL RESIDENTIAL CODE. MINIMUM 24" LAP SPlice LENGTH.
- LOCATE REBAR IN CENTER OF FOUNDATION WALL.
- WHERE REQUIRED, FILL BLOCK SOLID WITH TYPE "S" MORTAR OR 3000 PSI GROUT. USE OF "LOW LET GROUTING" METHOD REQUIRED WHEN FILLING WALLS WITH GROUT AT HEIGHTS OF 5' AND GREATER.

### ANCHOR SPACING AND EMBEDMENT

WIND ZONE	120 MPH	130 MPH
SPACING	6'-0" O.C.	4'-0" O.C.
EMBEDMENT	1'	15" INTO MASONRY 1" INTO CONCRETE

**J.S. THOMPSON ENGINEERING, INC.**  
606 WADE AVE., SUITE 104 RALEIGH, NC 27605  
PHONE: (919) 789-9919 FAX: (919) 789-9921  
N.C. LICENSE NO.: C1731

120 MPH - 130 MPH ULTIMATE DESIGN WIND SPEED  
FOUNDATION DETAILS

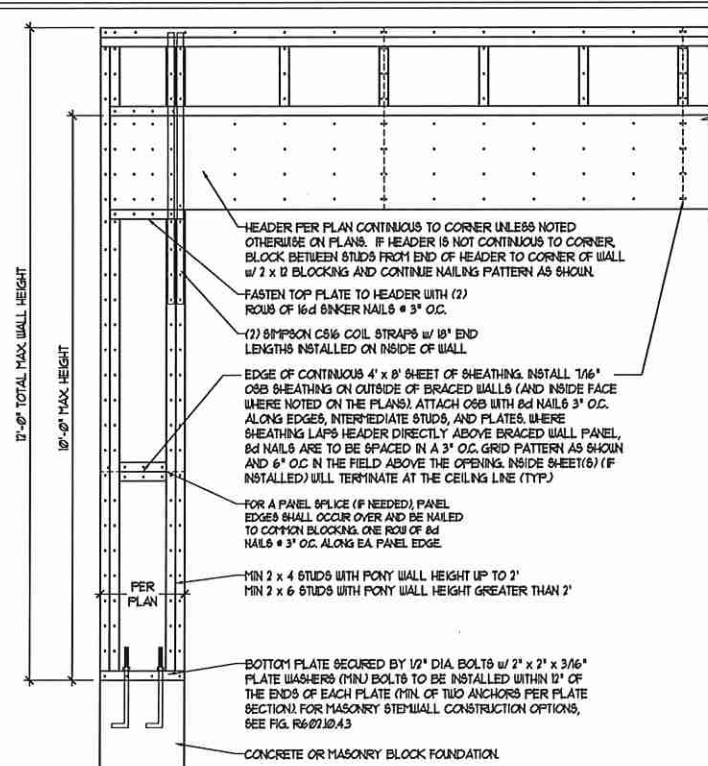
DATE: NOVEMBER 14, 2018  
SCALE: NTS  
DRAWN BY: JST  
ENGINEERED BY: JES



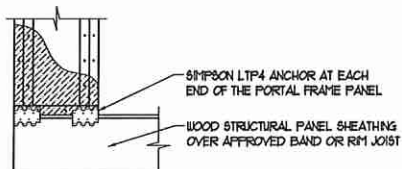
D-1  
FOUNDATION DETAILS

**GENERAL WALL BRACING NOTES:**

1. WALL BRACING DESIGNED IN ACCORDANCE WITH CHAPTER 6 OF THE 2018 NC RESIDENTIAL BUILDING CODE (NRC). TABLES AND FIGURES REFERENCED ARE FROM THE 2018 NRC.
2. SEE THIS SHEET FOR GENERAL DETAILS. REFER TO THE 2018 NRC FOR ADDITIONAL INFORMATION AS NEEDED.
3. SEE STRUCTURAL SHEETS FOR BRACED WALL LOCATIONS, DIMENSIONS, HOLD DOWN TYPE AND LOCATIONS, BRACED WALL LINE KEY WITH WALL DESIGN SUMMARY OF REQUIRED/PROVIDED TOTALS FOR EACH WALL LINE AND ANY SPECIAL NOTES OR REQUIREMENTS.
4. ALL EXTERIOR WALLS ARE TO BE SHEATHED WITH CS-USP IN ACCORDANCE WITH SECTION R602.10.3 UNLESS NOTED OTHERWISE.
5. ALL EXTERIOR AND INTERIOR WALLS TO HAVE 1/2" GYPSUM INSTALLED. WHEN NOT USING METHOD "GB", GYPSUM TO BE FASTENED PER TABLE R602.3.1. METHOD GB TO BE FASTENED PER TABLE R602.10.1.
6. CS-USP REFERS TO THE "CONTINUOUS SHEATHING - WOOD STRUCTURAL PANEL" WALL BRACING METHOD. 1/8" OSB SHEATHING IS TO BE INSTALLED ON ALL EXTERIOR WALLS ATTACHED W/ 6d COMMON NAILS OR 8d (2 1/2" LONG x 0.13" DIAMETER) NAILS SPACED 6" O.C. ALONG PANEL EDGES AND 12" O.C. IN THE FIELD (I.N.O.).
7. GB REFERS TO THE "GYPSUM BOARD" WALL BRACING METHOD. 1/2" MIN GYPSUM WALL BOARD IS TO BE INSTALLED ON BOTH SIDES OF THE BRACED WALL FASTENED WITH 1 1/4" SCREWS OR 1 5/8" NAILS SPACED 1" O.C. ALONG PANEL EDGES INCLUDING TOP AND BOTTOM PLATES AND INTERMEDIATE SUPPORTS (I.N.O.). VERIFY ALL FASTENER OPTIONS FOR 1/2" AND 5/8" GYPSUM PRIOR TO CONSTRUCTION. FOR INTERIOR FASTENER OPTIONS SEE TABLE R602.3.1. FOR EXTERIOR FASTENER OPTIONS SEE TABLE R602.3.1. EXTERIOR GB TO BE INSTALLED VERTICALLY.
8. REQUIRED BRACED WALL LENGTH FOR EACH SIDE OF THE CIRCUMSCRIBED RECTANGLE ARE INTERPOLATED PER TABLE R602.10.3. METHOD CS-USP CONTRIBUTES ITS ACTUAL LENGTH, METHOD GB CONTRIBUTES 5 TIMES ITS ACTUAL LENGTH, AND METHOD FF CONTRIBUTES 15 TIMES ITS ACTUAL LENGTH.

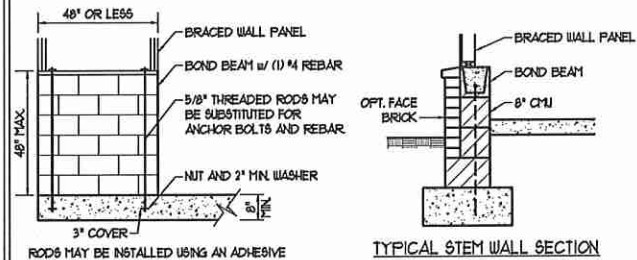
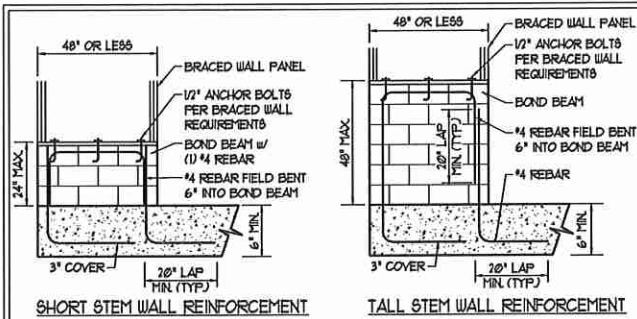


OVER CONCRETE OR MASONRY BLOCK FOUNDATION

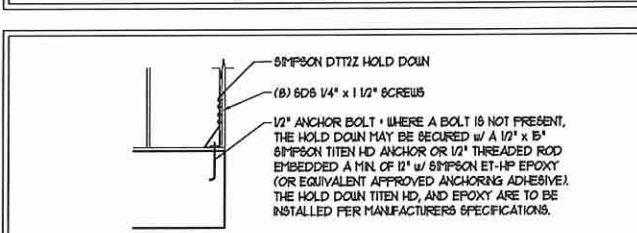
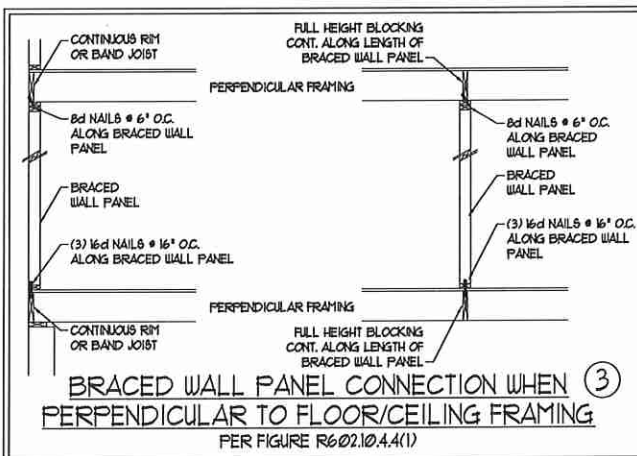


OVER RAISED WOOD FLOOR - FRAMING ANCHOR OPTION  
\* APPLICABLE W/ GREATER THAN 12" KNEE WALL HEIGHTS IN CRAWL SPACE AND ABOVE FRAMED BASEMENT WALLS \*

**METHOD FF-PORTAL FRAME DETAIL ①**

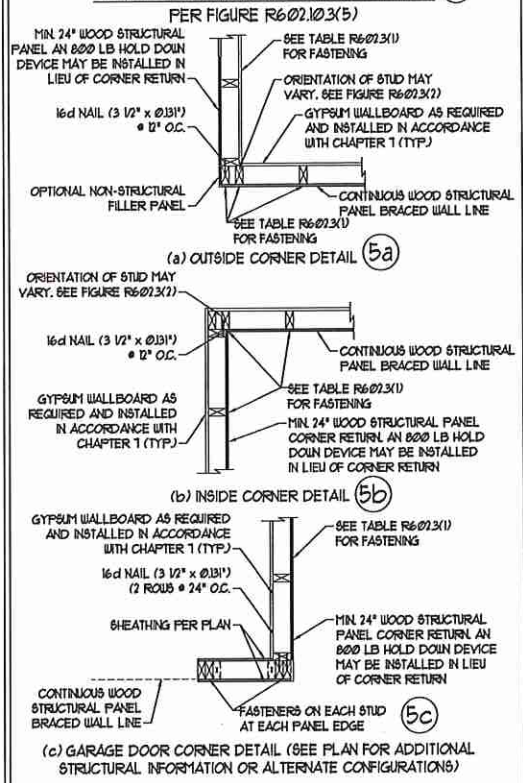


RODS MAY BE INSTALLED USING AN ADHESIVE ANCHORING SYSTEM WITH A MINIMUM TENSILE CAPACITY OF 3750 LBS AND INSTALLED IN ACCORDANCE WITH MANUFACTURER'S SPECS.  
**OPTIONAL STEM WALL REINFORCEMENT**  
**NOTE: GROUT BOND BEAMS AND ALL CELLS WHICH CONTAIN REBAR THREADED RODS AND ANCHOR BOLTS**  
**MASONRY STEM WALLS SUPPORTING BRACED WALL PANELS ②**  
PER FIGURE R602.10.4.3

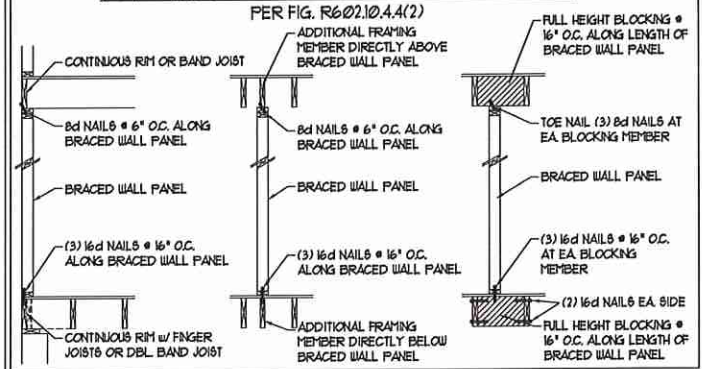


**HOLD DOWN DETAIL FOR MASONRY FOUNDATION OR MONOLITHIC SLAB ④**  
\* APPLICABLE ONLY WHERE SPECIFIED ON PLAN \*

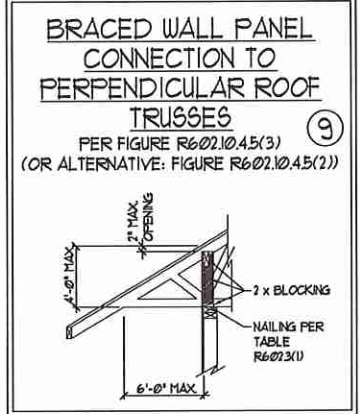
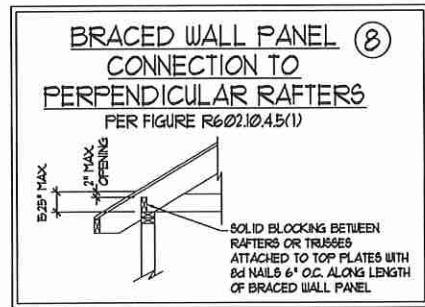
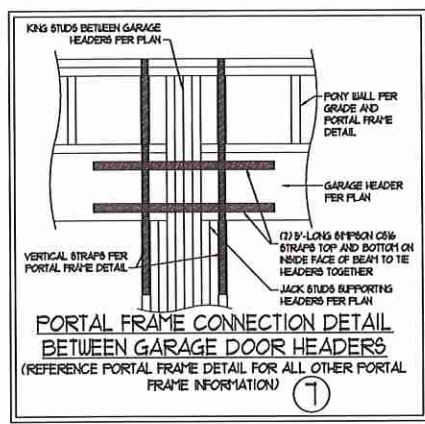
**TYPICAL EXTERIOR CORNER FRAMING FOR CONTINUOUS SHEATHING ⑤**



**BRACED WALL PANEL CONNECTION WHEN PARALLEL TO FLOOR/CEILING FRAMING ⑥**



This sealed page is to be used in conjunction with a full plan set engineered by J.S. Thompson Engineering, Inc. only. Use of this individual sealed page within architectural pages or shop drawings by others is a punishable offense under N.C. Statute § 89C-23



**J.S. THOMPSON ENGINEERING, INC.**  
606 WADE AVE., SUITE 104 RALEIGH, NC 27605  
PHONE: (919) 789-9919 FAX: (919) 789-9921  
N.C. LICENSE NO. C1133

120 MPH - 130 MPH ULTIMATE DESIGN WIND SPEED  
WALL BRACING NOTES AND DETAILS

DATE: NOVEMBER 14, 2018  
SCALE: 1/4" = 1'-0"  
DRAWN BY: JST  
ENGINEERED BY: JST



D-2  
BRACED WALL NOTES AND DETAILS AND FF DETAIL

**GENERAL NOTES**

- ENGINEER'S SEAL APPLIES ONLY TO STRUCTURAL COMPONENTS INCLUDING ROOF RAFTERS, HIP, VALLEYS, RIDGES, FLOORS, WALLS, BEAMS, HEADERS, COLUMNS, CANTILEVERS, OFFSET LOAD BEARING WALLS, PIERS, GIRDER SYSTEM AND FOOTING. ENGINEER'S SEAL DOES NOT CERTIFY DIMENSIONAL ACCURACY OF ARCHITECTURAL LAYOUT INCLUDING ROOF. ENGINEER'S SEAL DOES NOT APPLY TO I-JOIST OR FLOOR/ROOF TRUSS LAYOUT DESIGN AND ACCURACY.
- ALL CONSTRUCTION SHALL CONFORM TO THE LATEST REQUIREMENTS OF THE NORTH CAROLINA RESIDENTIAL CODE (NRC) 2018 EDITION, PLUS ALL LOCAL CODES AND REGULATIONS. THE STRUCTURAL ENGINEER IS NOT RESPONSIBLE FOR, AND WILL NOT HAVE CONTROL OF, CONSTRUCTION METHODS, TECHNIQUES, SEQUENCES OR PROCEDURES, OR SAFETY PRECAUTIONS AND PROGRAMS IN CONNECTION WITH THE CONSTRUCTION WORK. NOR WILL THE ENGINEER BE RESPONSIBLE FOR THE CONTRACTOR'S FAILURE TO CARRY OUT THE CONSTRUCTION WORK IN ACCORDANCE WITH THE CONTRACT DOCUMENTS.
- STRUCTURAL DESIGN BASED ON THE PROVISIONS OF THE NRC, 2018 EDITION (R301.4 - R301.7)
 

DESIGN CRITERIA	LIVE LOAD (PSF)	DEAD LOAD (PSF)	DEFLECTION (IN)
ATTIC WITH LIMITED STORAGE	20	10	L/140 (L/360 w/ BRITTLE FINISHES)
ATTIC WITHOUT STORAGE	10	10	L/360
DECKS	40	10	L/360
EXTERIOR BALCONIES	40	10	L/360
FIRE ESCAPES	40	10	L/360
HANDRAILS/GUARDRAILS	200 LB OR 50 (PLF)	10	L/360
PASSENGER VEHICLE GARAGE	50	10	L/360
ROOMS OTHER THAN SLEEPING ROOM	40	10	L/360
SLEEPING ROOMS	30	10	L/360
STAIRS	40	10	L/360
WIND LOAD (BASED ON TABLE R301.2(4) WIND ZONE AND EXPOSURE)			
GROUND SNOW LOAD, P <sub>g</sub>	20 (PSF)		

  - I-JOIST SYSTEMS DESIGNED WITH 12 PSF DEAD LOAD AND DEFLECTION (IN) OF L/480
  - FLOOR TRUSS SYSTEMS DESIGNED WITH 15 PSF DEAD LOAD
- FOR 15 AND 120 MPH WIND ZONES, FOUNDATION ANCHORAGE IS TO COMPLY WITH SECTION R403.1.6 OF THE NRC, 2018 EDITION. FOR 150 MPH, 140 MPH, AND 150 MPH WIND ZONES, FOUNDATION ANCHORAGE IS TO COMPLY WITH SECTION 450.4 OF THE NRC, 2018 EDITION.
- ENERGY EFFICIENCY COMPLIANCE AND INSULATION VALUES OF THE BUILDING TO BE IN ACCORDANCE WITH CHAPTER 11 OF THE NRC, 2018 EDITION.

**FOOTING AND FOUNDATION NOTES**

- FOUNDATION DESIGN BASED ON A MINIMUM ALLOWABLE BEARING CAPACITY OF 2000 PSF. CONTACT GEOTECHNICAL ENGINEER IF BEARING CAPACITY IS NOT ACHIEVED.
- FOR ALL CONCRETE SLABS AND FOOTINGS, THE AREA WITHIN THE PERIMETER OF THE BUILDING ENVELOPE SHALL HAVE ALL VEGETATION, TOP SOIL AND FOREIGN MATERIAL REMOVED. FILL MATERIAL SHALL BE FREE OF VEGETATION AND FOREIGN MATERIAL. THE FILL SHALL BE COMPACTED TO ASSURE UNIFORM SUPPORT OF THE SLAB, AND EXCEPT WHERE APPROVED, THE FILL DEPTHS SHALL NOT EXCEED 24" FOR CLEAN SAND OR GRAVEL. A 4" THICK BASED COURSE CONSISTING OF CLEAN GRADED SAND OR GRAVEL SHALL BE PLACED. A BASE COURSE IS NOT REQUIRED WHERE A CONCRETE SLAB IS INSTALLED ON WELL-DRAINED OR SAND-GRAVEL MIXTURE SOILS CLASSIFIED AS GROUP 1, ACCORDING TO THE UNITED SOIL CLASSIFICATION SYSTEM IN ACCORDANCE WITH TABLE R405.1 OF THE NRC, 2018 EDITION.
- PROPERLY DEWATER EXCAVATION PRIOR TO POURING CONCRETE WHEN BOTTOM OF CONCRETE SLAB IS AT OR BELOW WATER TABLE. IF APPLICABLE, 3/4" - 1" DEEP CONTROL JOINTS ARE TO BE SALED WITHIN 4 TO 12 HOURS OF CONCRETE FINISHING AND WALL LOCATIONS HAVE BEEN MARKED. ADJUST WHERE NECESSARY.
- CONCRETE SHALL CONFORM TO SECTION R402.2 OF THE NRC, 2018 EDITION. CONCRETE REINFORCING STEEL TO BE ASTM A635 GRADE 60, WELDED WIRE FABRIC TO BE ASTM A105. MAINTAIN A MINIMUM CONCRETE COVER AROUND REINFORCING STEEL OF 3" IN FOOTINGS AND 1 1/2" IN SLABS. FOR Poured CONCRETE WALLS, CONCRETE COVER FOR REINFORCING STEEL MEASURED FROM THE INSIDE FACE OF THE WALL SHALL NOT BE LESS THAN 3/4". CONCRETE COVER FOR REINFORCING STEEL MEASURED FROM THE OUTSIDE FACE OF THE WALL SHALL NOT BE LESS THAN 1 1/2" FOR 1/2" BARS OR SMALLER, AND NOT LESS THAN 2" FOR 3/4" BARS OR LARGER.
- MASONRY UNITS TO CONFORM TO ACE 530/ASCE 5/11/18 402. MORTAR SHALL CONFORM TO ASTM C210.
- THE UNSUPPORTED HEIGHT OF MASONRY PIERS SHALL NOT EXCEED FOUR TIMES THEIR LEAST DIMENSION FOR UNFILLED HOLLOW CONCRETE MASONRY UNITS AND TEN TIMES THEIR LEAST DIMENSION FOR SOLID OR SOLID FILLED PIERS. PIERS MAY BE FILLED SOLID WITH CONCRETE OR TYPE M OR S MORTAR. PIERS AND WALLS SHALL BE CAPPED WITH 8" OF SOLID MASONRY.
- THE CENTER OF EACH OF THE PIERS SHALL BEAR IN THE MIDDLE THIRD OF ITS RESPECTIVE FOOTING. EACH GIRDER SHALL BEAR IN THE MIDDLE THIRD OF THE PIERS.
- ALL CONCRETE AND MASONRY FOUNDATION WALLS ARE TO BE CONSTRUCTED IN ACCORDANCE WITH THE PROVISIONS OF SECTION R404 OF THE NRC, 2018 EDITION OR IN ACCORDANCE WITH ACI 318, ACI 332, NCHA TR68-A OR ACE 530/ASCE 5/11/18 402. MASONRY FOUNDATION WALLS ARE TO BE REINFORCED PER TABLE R404.1(1), R404.1(2), R404.1(3), OR R404.1(4) OF THE NRC, 2018 EDITION. CONCRETE FOUNDATION WALLS ARE TO BE REINFORCED PER TABLE R404.1(5) OF THE NRC, 2018 EDITION. STEEL CONCRETE FOUNDATION WALLS TO 2 x 6 FRAMED WALLS AT 16" O.C. WHERE GRADE PERMITS (UNO).

This sealed page is to be used in conjunction with a full plan set engineered by J.S. Thompson Engineering, Inc. only. Use of this individual sealed page within architectural pages or shop drawings by others is a punishable offense under N.C. Statute § 89C-23

**FRAMING NOTES**

- ALL FRAMING LUMBER SHALL BE 2 SFF MINIMUM (Fb = 875 PSI, Fv = 375 PSI, E = 1600000 PSI) UNLESS NOTED OTHERWISE (UNO). ALL TREATED LUMBER SHALL BE 2 SYP MINIMUM (Fb = 575 PSI, Fv = 175 PSI, E = 1600000 PSI) UNLESS NOTED OTHERWISE (UNO).
- LAMINATED VENEER LUMBER (LVL) SHALL HAVE THE FOLLOWING MINIMUM PROPERTIES: Fb = 2600 PSI, Fv = 285 PSI, E = 1900000 PSI. LAMINATED STRAND LUMBER (LSL) SHALL HAVE THE FOLLOWING MINIMUM PROPERTIES: Fb = 2325 PSI, Fv = 310 PSI, E = 1900000 PSI. PARALLEL STRAND LUMBER (PSL) UP TO 1" DEPTH SHALL HAVE THE FOLLOWING MINIMUM PROPERTIES: Fc = 2500 PSI, E = 18000000 PSI. PARALLEL STRAND LUMBER (PSL) MORE THAN 1" DEPTH SHALL HAVE THE FOLLOWING MINIMUM PROPERTIES: Fc = 2300 PSI, E = 20000000 PSI. INSTALL ALL CONNECTIONS PER MANUFACTURER'S SPECIFICATIONS.
- STRUCTURAL STEEL SHALL CONFORM TO THE FOLLOWING ASTM SPECIFICATIONS
 

A. W AND WT SHAPES:	ASTM A992
B. CHANNELS AND ANGLES:	ASTM A36
C. PLATES AND BARS:	ASTM A36
D. HOLLOW STRUCTURAL SECTIONS:	ASTM A500 GRADE B
E. STEEL PIPE:	ASTM A53, GRADE B, TYPE E OR S
- STEEL BEAMS SHALL BE SUPPORTED AT EACH END WITH A MINIMUM BEARING LENGTH OF 3 1/2" AND FULL FLANGE WIDTH (UNO). PROVIDE SOLID BEARING FROM BEAM SUPPORT TO FOUNDATION. BEAMS SHALL BE ATTACHED AT THE BOTTOM FLANGE TO EACH SUPPORT AS FOLLOWS (UNO):
 

A. WOOD FRAMING	(2) 1/2" DIA. x 4" LONG LAG SCREWS
B. CONCRETE	(2) 1/2" DIA. x 4" WEDGE ANCHORS
C. MASONRY (FULLY GROUTED)	(2) 1/2" DIA. x 4" LONG SIMPSON TITEN HD ANCHORS

LATERAL SUPPORT IS CONSIDERED ADEQUATE PROVIDING THE JOISTS ARE TOE NAILED TO THE 2x NAILER ON TOP OF THE STEEL BEAM, AND THE 2x NAILER IS SECURED TO THE TOP OF THE STEEL BEAM w/ (2) ROWS OF SELF TAPPING SCREWS @ 16" O.C. OR (2) ROWS OF 1/2" DIAMETER BOLTS @ 16" O.C. IF 1/2" BOLTS ARE USED TO FASTEN THE NAILER, THE STEEL BEAM SHALL BE FABRICATED w/ (2) ROWS OF 9/16" DIAMETER HOLES @ 16" O.C.
- SQUARES DENOTE POINT LOADS WHICH REQUIRE SOLID BLOCKING TO GIRDER OR FOUNDATION. SHADED SQUARES DENOTE POINT LOADS FROM ABOVE WHICH REQUIRE SOLID BLOCKING TO SUPPORTING MEMBER BELOW.
- ALL LOAD BEARING HEADERS TO CONFORM TO TABLE R602.1(1) AND R602.1(2) OF THE NRC, 2018 EDITION OR BE (2) 2 x 6 WITH (1) JACK AND (1) KING STUD EACH END (UNO) WHICHEVER IS GREATER. ALL HEADERS TO BE SECURED TO EACH JACK STUD WITH (4) 8d NAILS. ALL BEAMS TO BE SUPPORTED WITH (2) STUDS AT EACH BEARING POINT (UNO). INSTALL KING STUDS PER SECTION R602.1.5 OF THE NORTH CAROLINA RESIDENTIAL CODE, 2018 EDITION.
- ALL BEAMS, HEADERS, OR GIRDER TRUSSES PARALLEL TO WALL ARE TO BEAR FULLY ON (1) JACK OR (2) STUDS MINIMUM OR THE NUMBER OF JACKS OR STUDS NOTED. ALL BEAMS OR GIRDER TRUSSES PERPENDICULAR TO WALL AND SUPPORTED BY (3) STUDS OR LESS ARE TO HAVE 1 1/2" MINIMUM BEARING (UNO). ALL BEAMS OR GIRDER TRUSSES PERPENDICULAR TO WALL AND SUPPORTED BY MORE THAN (3) STUDS OR OTHER NOTED COLUMN ARE TO BEAR FULLY ON SUPPORT COLUMN FOR ENTIRE WALL DEPTH (UNO). BEAM ENDS THAT BUTT INTO ONE ANOTHER ARE TO EACH BEAR EQUAL LENGTHS (UNO).
- FLITCH BEAMS SHALL BE BOLTED TOGETHER USING 1/2" DIAMETER BOLTS (ASTM A307) WITH WASHERS PLACED AT THREADED END OF BOLT. BOLTS SHALL BE SPACED AT 24" CENTERS (MAXIMUM), AND STAGGERED AT TOP AND BOTTOM OF BEAM (2" EDGE DISTANCE), WITH (2) BOLTS LOCATED AT 6" FROM EACH END (UNO).
- ALL I-JOIST OR TRUSS LAYOUTS ARE TO BE IN COMPLIANCE WITH THE OVERALL DESIGN SPECIFIED ON THE PLANS. ALL DEVIATIONS ARE TO BE BROUGHT TO THE ATTENTION OF THE ENGINEER OF RECORD PRIOR TO INSTALLATION.
- BRACED WALL PANELS SHALL BE CONSTRUCTED ACCORDING TO THE NORTH CAROLINA RESIDENTIAL CODE 2018 EDITION WALL BRACING CRITERIA. THE ANGLE, LENGTH, AND LOCATION OF BRACING SHALL COMPLY WITH ALL APPLICABLE TABLES IN SECTION R602.10.
- PROVIDE DOUBLE JOIST UNDER ALL WALLS PARALLEL TO FLOOR JOISTS. PROVIDE SUPPORT UNDER ALL WALLS PARALLEL TO FLOOR TRUSSES OR I-JOISTS PER MANUFACTURER'S SPECIFICATIONS. INSTALL BLOCKING BETWEEN JOISTS OR TRUSSES FOR POINT LOAD SUPPORT FOR ALL POINT LOADS ALONG OFFSET LOAD LINE.
- FOR ALL HEADERS SUPPORTING BRICK VENEER THAT ARE LESS THAN 8'-0" IN LENGTH, REST A 6" x 4" x 5/16" STEEL ANGLE WITH 6" MINIMUM EMBEDMENT AT SIDES FOR BRICK SUPPORT (UNO). FOR ALL HEADERS 8'-0" AND GREATER IN LENGTH, BOLT A 6" x 4" x 5/16" STEEL ANGLE TO HEADER WITH 1/2" LAG SCREWS AT 12" O.C. STAGGERED FOR BRICK SUPPORT. FOR ALL BRICK SUPPORT AT ROOF LINE, BOLT A 6" x 4" x 5/16" STEEL ANGLE TO (2) 2 x 10 BLOCKING INSTALLED w/ (4) 8d NAILS EA. FLY BETWEEN WALL STUDS WITH (2) ROWS OF 1/2" LAG SCREWS AT 12" O.C. STAGGERED AND IN ACCORDANCE WITH SECTION R103.8(2) OF THE NRC, 2018 EDITION.
- FOR STICK FRAMED ROOFS, CIRCLES DENOTE (3) 2 x 4 POSTS FOR ROOF MEMBER SUPPORT. HIP SPLICES ARE TO BE SPACED A MINIMUM OF 8'-0". FASTEN MEMBERS WITH THREE ROWS OF 12d NAILS AT 16" O.C. FRAME DORMER WALLS ON TOP OF DOUBLE OR TRIPLE RAFTERS AS SHOWN (UNO).
- FOR TRUSSED ROOFS, FRAME DORMER WALLS ON TOP OF 2 x 4 LADDER FRAMING AT 24" O.C. BETWEEN ADJACENT ROOF TRUSSES. STICK FRAME OVER-FRAMED ROOF SECTIONS WITH 2 x 8 RIDGES, 2 x 6 RAFTERS AT 16" O.C. AND FLAT 2 x 10 VALLEYS (UNO).
- ALL 4 x 4 AND 6 x 6 POSTS TO BE INSTALLED WITH 1000 LB CAPACITY UPLIFT CONNECTORS TOP AND BOTTOM (UNO). POSTS MAY BE SECURED USING ONE SIMPSON I45 OR L120 UPLIFT CONNECTOR FASTENED TO THE BAND AT THE BOTTOM AND THE BEAM AT THE TOP OF EACH POST. ONE 16" SECTION OF SIMPSON C916 COIL STRAPPING WITH (8) 8d HDG NAILS AT EACH END MAY BE USED IN LIEU OF EACH TWIN STRAP IF DESIRED. FOR MASONRY OR CONCRETE FOUNDATION USE SIMPSON POST BASE.

**J.S. THOMPSON ENGINEERING, INC.**  
 600 WADE AVE., SUITE 104 RALEIGH, NC 27605  
 PHONE: (919) 789-9919 FAX: (919) 789-9921  
 N.C. LICENSE NO. C-1733

120 MPH - 130 MPH ULTIMATE DESIGN WIND SPEED  
 STANDARD STRUCTURAL NOTES

DATE: NOVEMBER 14, 2018
SCALE: 1/4" = 1'-0"
DRAWN BY: JES
ENGINEERED BY: JST



S-0  
 STRUCTURAL NOTES