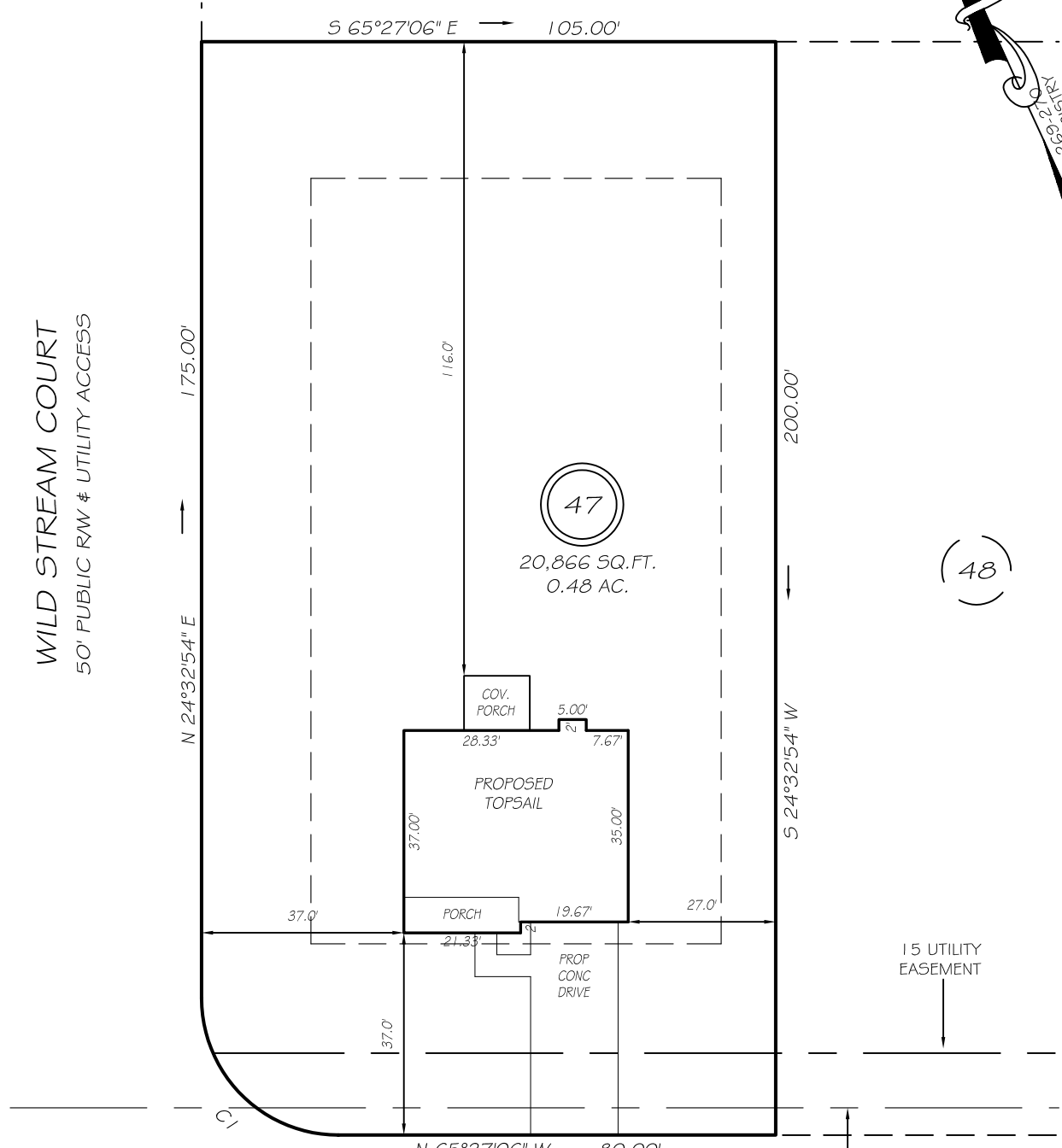
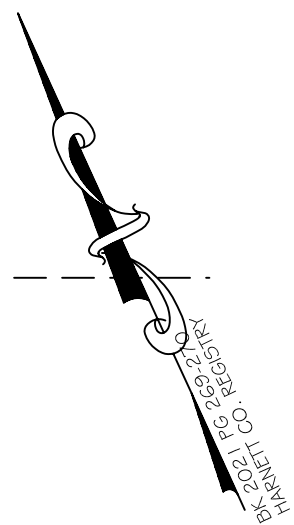


I, MICHAEL P. GRIFFIN, certify that under my direction and supervision this map was drawn from an actual field survey; that the error of closure of the survey as calculated by coordinates is 1: 10,000+; that the area shown hereon was calculated by coordinates.

Witness my hand and seal this day of MONTH 2021.

N/F
 AJ INVESTMENTS, LLC
 DB 3551, PG 111
 PB 2017 PG 342
 FUTURE DEVELOPMENT



WILD STREAM COURT
 50' PUBLIC RW & UTILITY ACCESS

N 24°32'54" E 175.00'

S 65°27'06" E 105.00'

116.0'

47
 20,866 SQ. FT.
 0.48 AC.

48

COV. PORCH 5.00'

PROPOSED TOPSAIL
 28.33' 7.67' 35.00'

PORCH 19.67'

PROP CONC DRIVE

15 UTILITY EASEMENT

N 65°27'06" W 80.00'

60' ACCESS EASEMENT

HUNGRY CREEK DRIVE

IMPERVIOUS AREAS

HOUSE	1608 SQ. FT.
DRIVE & WALKS	681 SQ. FT.
PATIO	000 SQ. FT.
TOTAL	2289 SQ. FT.
ALLOWED	5252 SQ. FT.

50' PUBLIC RW & UTILITY ACCESS

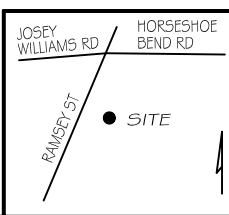
SETBACKS

FRONT	35'
REAR	25'
SIDE	10'
CORNER SIDE	20'

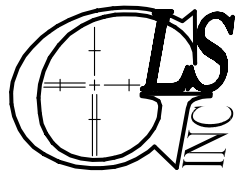
CI R=25.00' L=39.28' S20°27'06"E 35.36'

LEGEND

EIP	EXISTING IRON PIPE	FES	FLARED END SECTION
IPS	IRON PIPE SET	WM	WATER METER
R/W	RIGHT OF WAY	CO	CLEAN OUT
N/F	NOW OR FORMERLY	FH	FIRE HYDRANT
EIS	EXISTING IRON STAKE	CB	CATCH BASIN



PRELIMINARY
 NOT FOR RECORDATION,
 SALES OR CONVEYANCE



GRIFFIN LAND SURVEYING, INC.
 P. O. BOX 148
 FUQUAY-VARINA, NC 27526
 (919) - 567 - 1963

PLOT PLAN
 FOR
H & H HOMES

WILLIAMS FARM
LOT 47
 HUNGRY CREEK DRIVE
 NORTH CAROLINA

HARNETT CO. STEWART'S CREEK TOWNSHIP

DRAWN BY NMF

DATE 7/16/21

CHECKED BY MPG

SCALE 1" = 30'