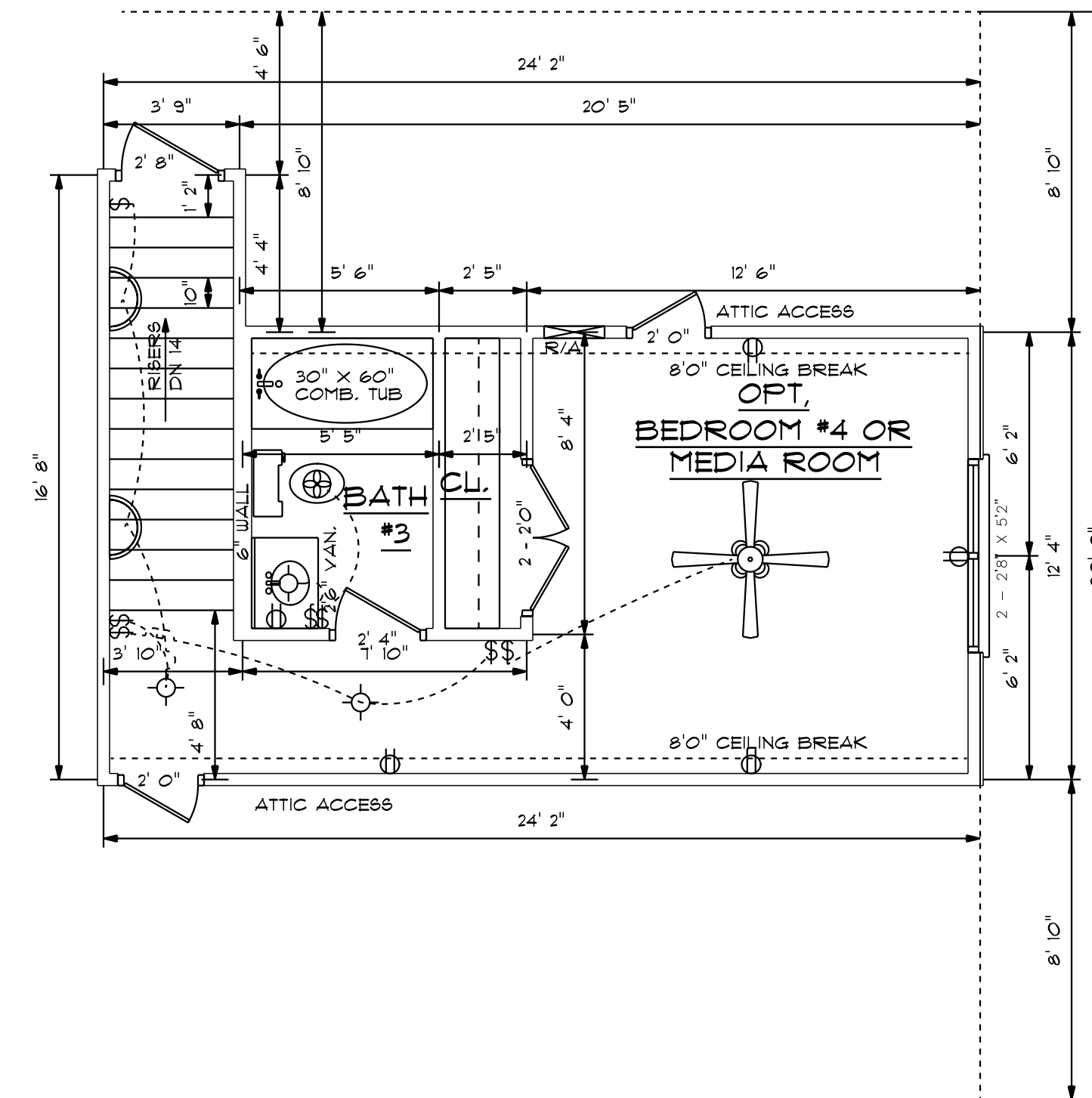


HEAT LOSS 10,106 BTU  
 HEAT GAIN 6,520 BTU  
 EQUIPMENT TUNOIR SPLIT HEAT  
 PUMP W/ TUEO18C AIR HANDLER  
 RATED @ 24,510 BTU HEATING AND  
 15,800 BTU COOLING PLUS 5 KW AUX. HEAT

**OPT. BEDROOM #4 OR  
 MEDIA ROOM HYAC PLAN**

SCALE: 1/4" = 1'0"



8'0" FINISHED CEILING HEIGHT  
 6'8" WINDOW HEADER HEIGHT

326 S.F. (INCLUDES STAIRS)  
**OPT. BEDROOM #4 OR  
 MEDIA ROOM FLOOR PLAN**

SCALE: 1/4" = 1'0"

SCALE: AS NOTED

DATE: JUNE 2021

DRAWN BY: CSP

BUILDING CONTRACTOR TO MEET LOCAL  
 LOADS PER CODE AS IT PERTAINS  
 TO CONSTRUCTION OF HOME  
 300, 350, 400, 450, 500 PSF

**RESIDENCE OF MS.  
 STACEY WALKER**

RESIDENTIAL DESIGNER  
**CHARLES SMITH ASSOC.**  
 RESIDENTIAL DESIGNER - FAYETTEVILLE, NORTH CAROLINA

I DO HEREBY CERTIFY THAT THIS DRAWING OR PLAN AND RELATED SPECIFICATIONS  
 MEET ALL LOCAL REQUIREMENTS AND ARE IN SUBSTANTIAL CONFORMITY WITH  
 THE INTERNATIONAL BUILDING CODE COUNCIL (2018) N.C. BUILDING CODE.

DRAWING NUMBER  
**W-2477**