

TYPICAL WALL: BRICK 4" BLOCK W/ 16" X 10" FOOTING  
8" BLOCK W/16" X 10" FOOTING  
(3)- 2 X 10'S GIRDER  
2 X 10'S 16" OC JOIST  
(2)- 2 X 10'S DBL JOIST

FOUNDATION NOTES:  
ALL FOOTINGS SHALL BEAR ON ORIGINAL UNDISTURBED SOIL.  
THE 28 DAY COMPRESSIVE STRENGTH OF ALL FOOTINGS IS 3000 PSI

PROVIDE WATER PROOFING AND PERIMETER DRAINS AS REQUIRED.

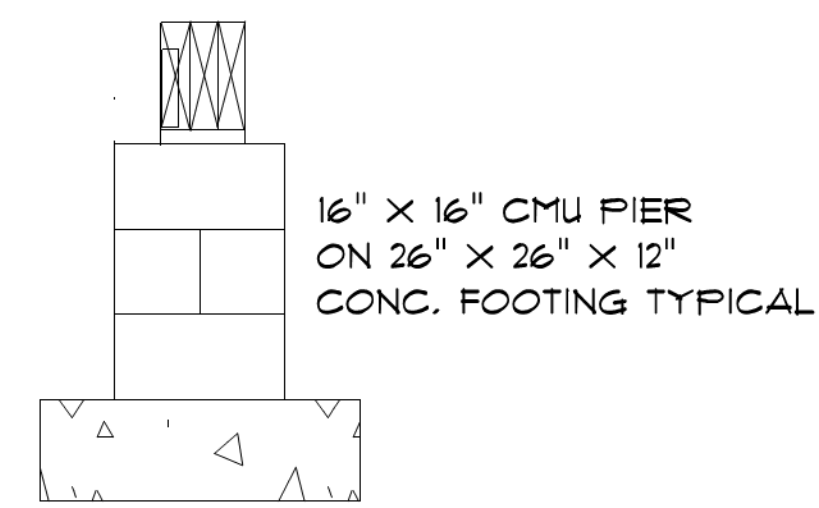
FOUNDATION CONCRETE MIX TO HAVE 1-1/2" MAX AGGREGATE SIZE. CONCRETE FILL MIX TO HAVE 1/2" MAX AGGREGATE SIZE.

FOOTING WIDTHS ARE BASED ON A LOAD-BEARING SOIL CAPACITY OF 2000 PSF.

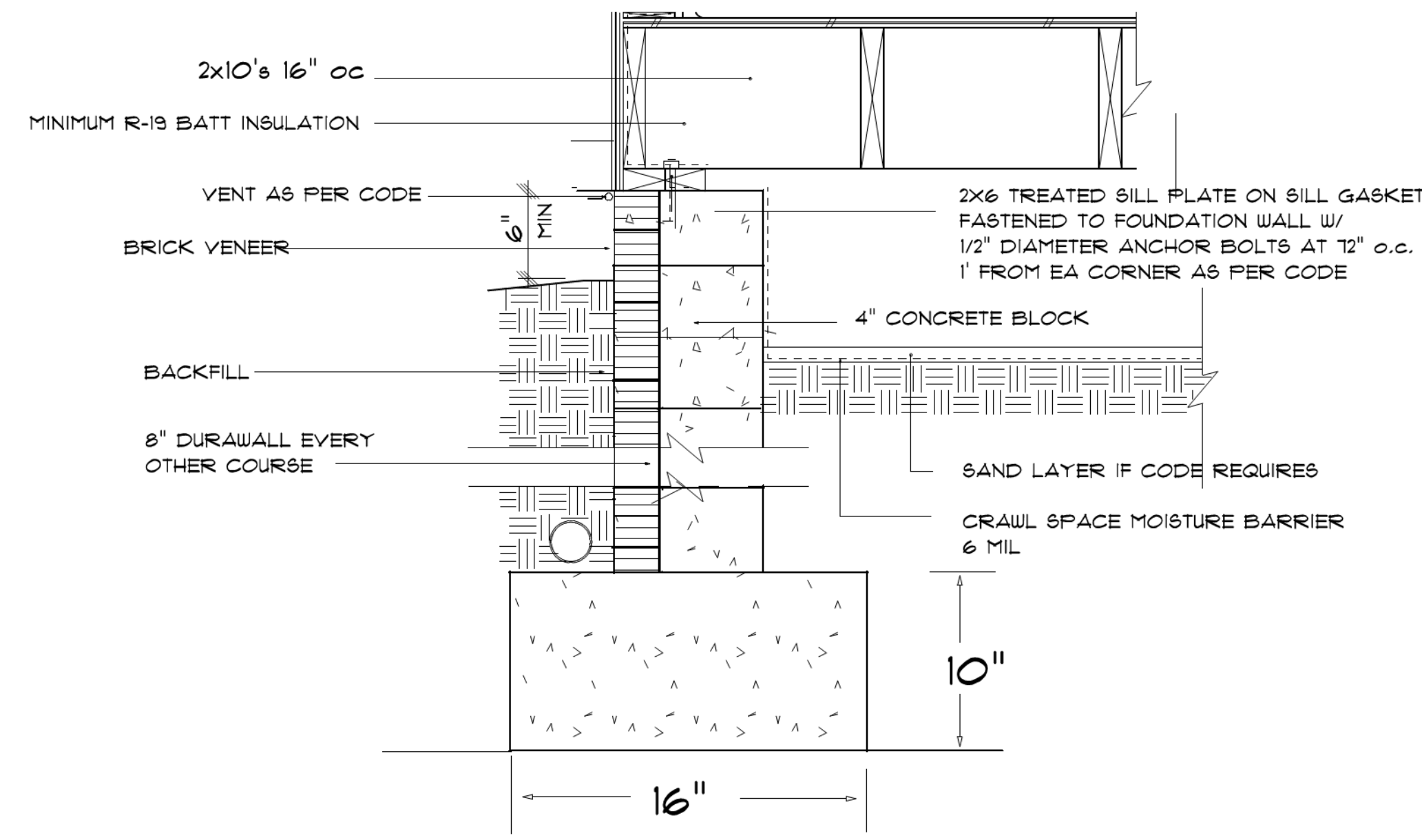
PROVIDE 6 MIL POLY VAPOR BARRIER TO COVER GROUND SURFACE IN CRAWL SPACE

ALL ANCHOR BOLTS TO BE 12" LONG, 1/2" DIA. A36 UNO ANCHOR BOLTS SHALL BE SPACE AT A MAX OF 6" OC AND NO MORE THAN 1' FROM EA CORNER.

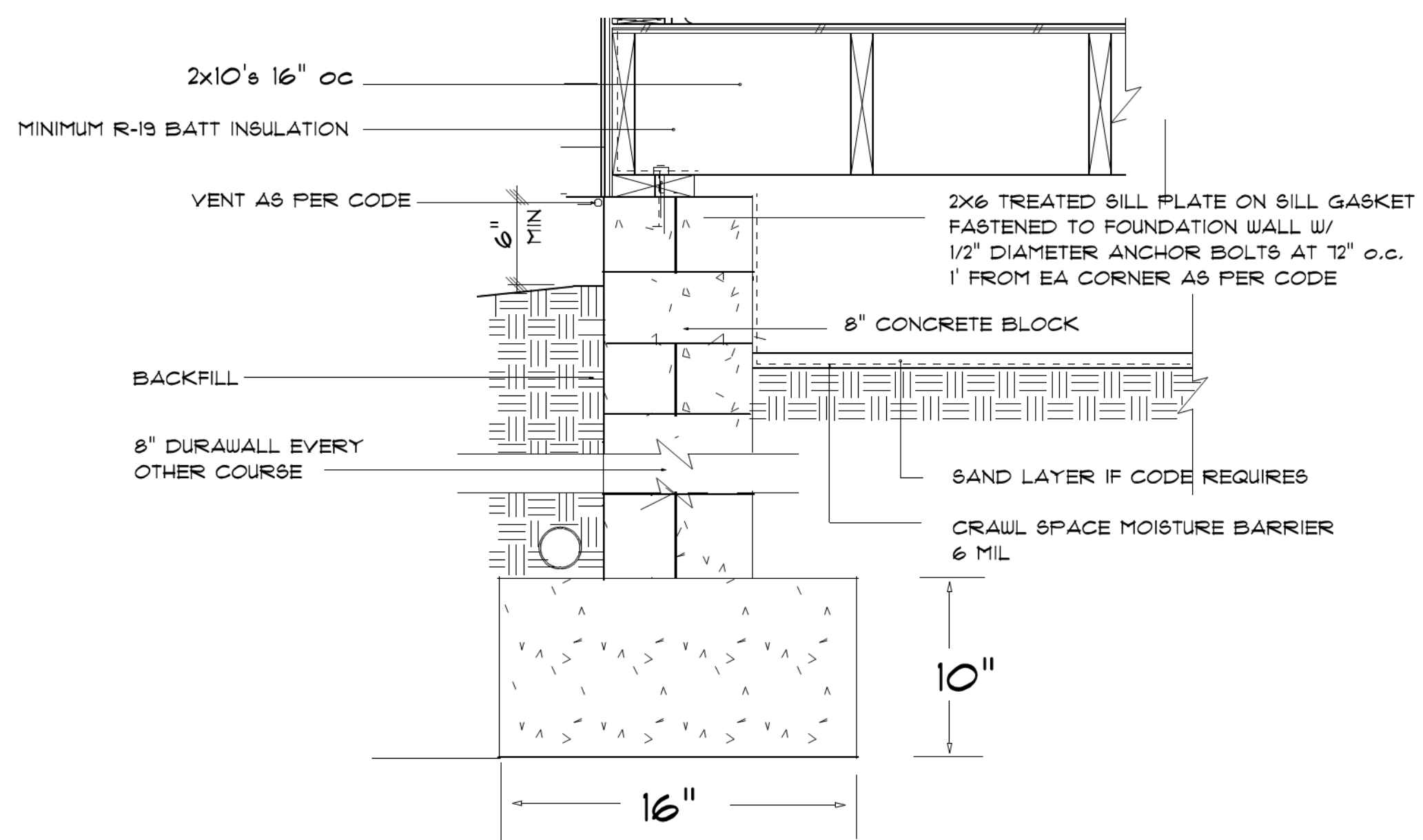
Termite Soil Treatment: Treat entire slab area soil or crawl space surface before vapor barrier is installed and slab is poured with 3 state approved termiticides. Termiticides should be applied by a licensed and certified pest control professional by the state of North Carolina.



CONCRETE BLOCK PIER DETAIL  
NOT TO SCALE

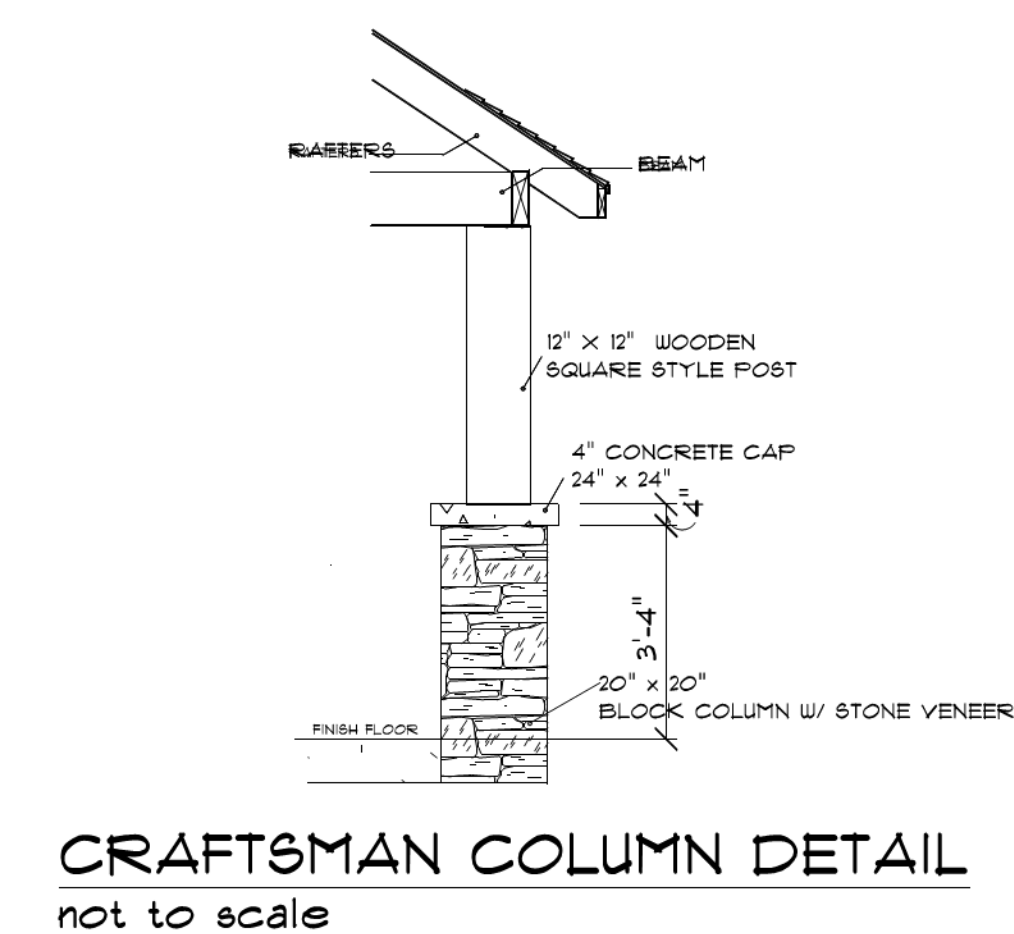
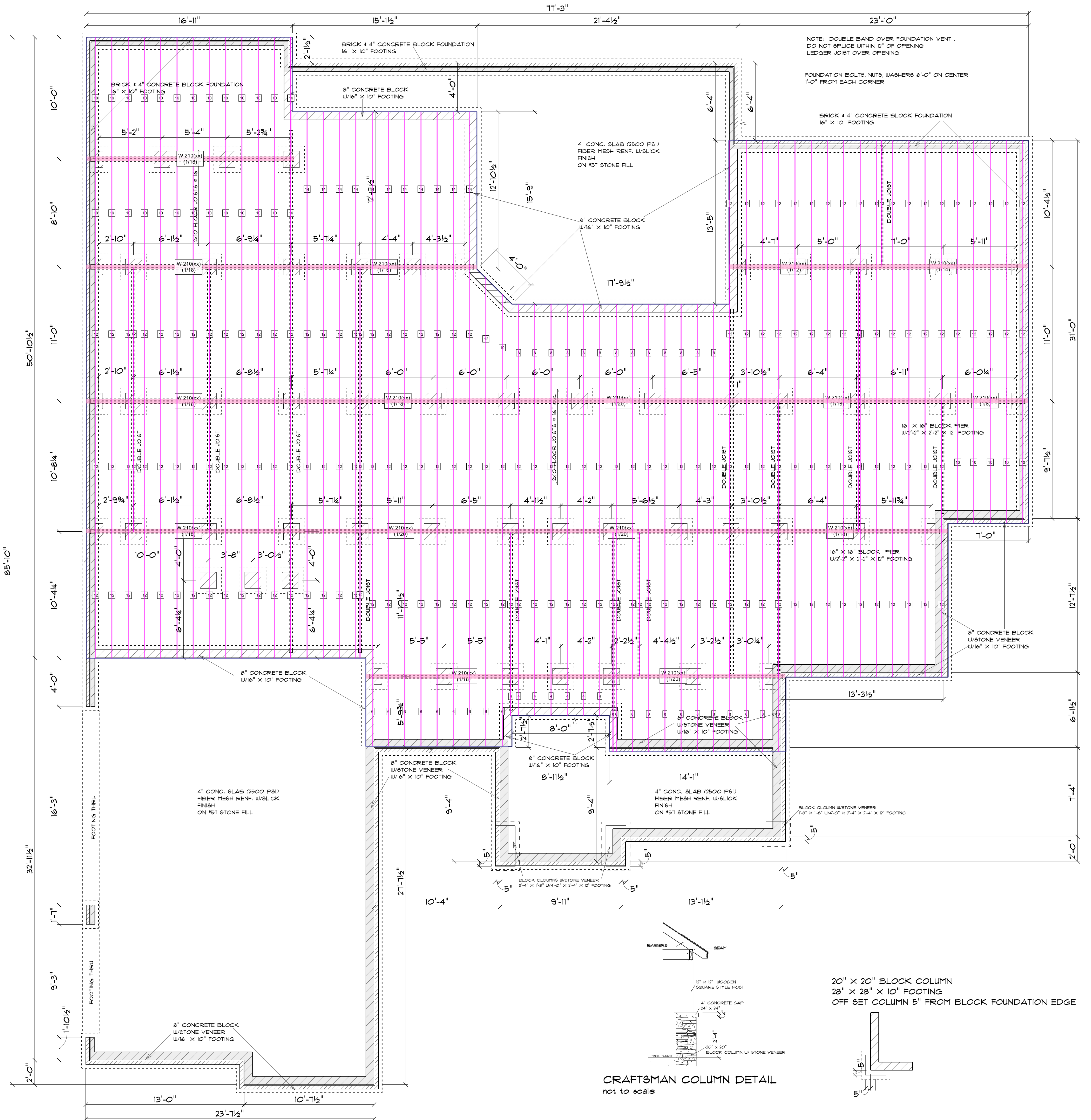


FOOTINGS & FOUNDATION DETAIL  
not to scale



FOOTINGS & FOUNDATION DETAIL  
not to scale

FOUNDATION PLAN  
SCALE: 1/4"



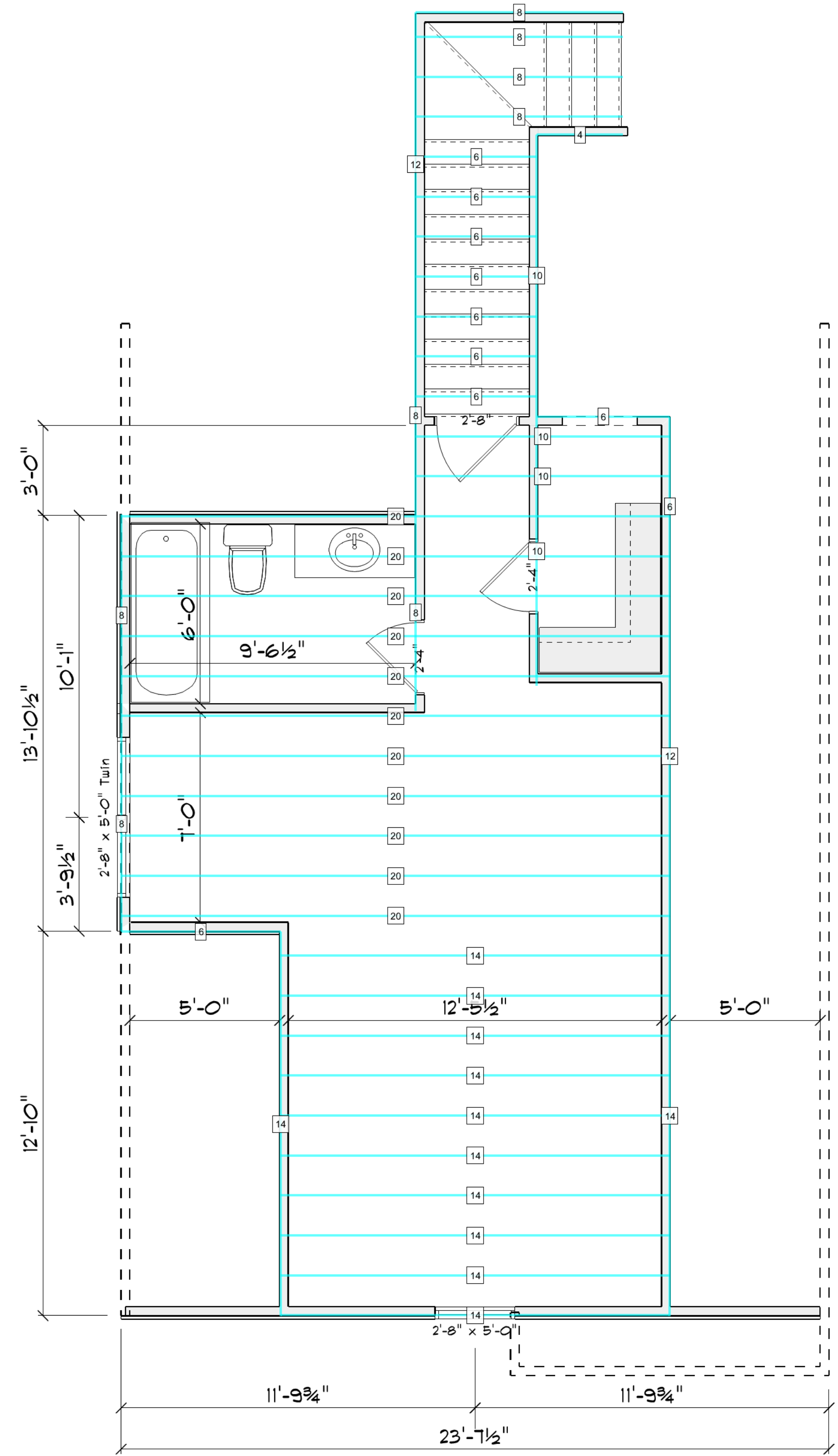
CRAFTSMAN COLUMN DETAIL  
not to scale

20" X 20" BLOCK COLUMN  
28" X 28" X 10" FOOTING  
OFF SET COLUMN 5" FROM BLOCK FOUNDATION EDGE

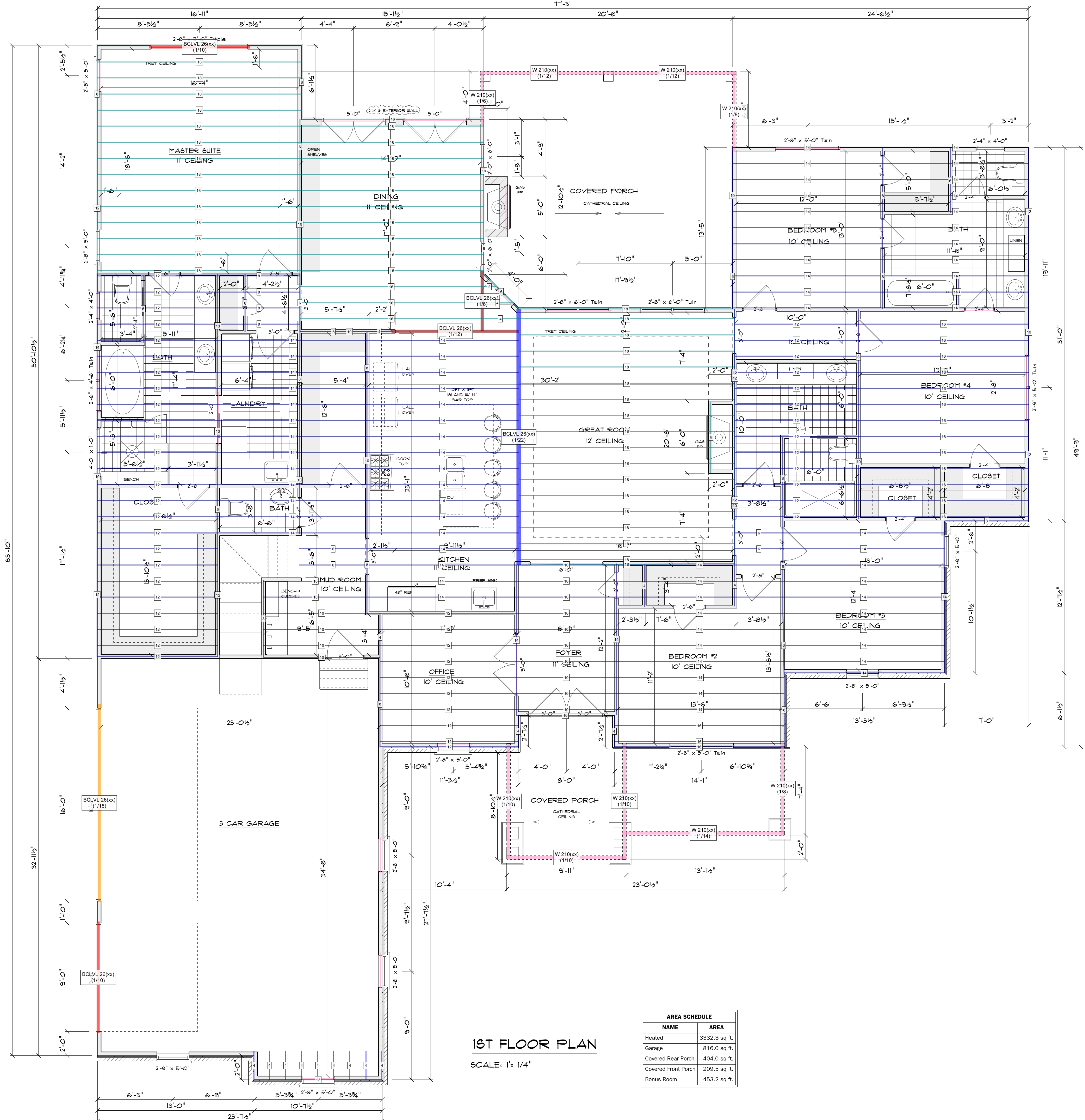
NOTE: DOUBLE BAND OVER FOUNDATION VENT. DO NOT SPLICE WITHIN 12" OF OPENING LEDGER JOIST OVER OPENING.

FOUNDATION BOLTS, NUTS, WASHERS 6'-0" ON CENTER 1'-0" FROM EACH CORNER

OPENING SCHEDULE			
SIZE	HINGE	COUNT	LIBRARY NAME
3'-0"	R	1	Exterior Door/Colonial
2'-8"	NA	1	Exterior Door/Tall Exterior Door/French
5'-0"	NA	2	Exterior Door/Tall Exterior Door/French
16'-0"	U	1	Garage/Tall Garage
9'-0"	U	1	Garage/Tall Garage
2'-0"	L	1	Interior Door/Colonial
2'-0"	R	1	Interior Door/Colonial
2'-4"	L	6	Interior Door/Colonial
2'-4"	R	1	Interior Door/Colonial
2'-6"	L	3	Interior Door/Colonial
2'-6"	R	2	Interior Door/Colonial
2'-8"	L	4	Interior Door/Colonial
2'-8"	R	1	Interior Door/Colonial
3'-0"	L	1	Interior Door/Colonial
5'-0"	LR	1	Interior Door/French
2'-0"	N	1	Interior Door/Pocket
2'-4"	N	2	Interior Door/Pocket
2'-4"	R	1	Interior Door/Shower
3'-0"	NA	2	Manufacturer/Therma-Tru/American Style Collection
1'-0" x 2'-0"	N	1	Vent
2'-4" x 4'-0"	U	2	Window/Single Hung
2'-0" x 4'-0"	U	1	Window/Single Hung
2'-0" x 6'-0"	NA	2	Window/Single Hung
2'-8" x 5'-0" Triple	U	1	Window/Single Hung
2'-8" x 5'-0"	U	12	Window/Single Hung
2'-8" x 6'-0" Twin	NA	2	Window/Single Hung
2'-8" x 5'-0" Twin	UU	3	Window/Single Hung
2'-6" x 4'-6" Twin	UU	1	Window/Single Hung
4'-0" x 1'-0"	N	1	Window/Transom



**BONUS ROOM**  
SCALE: 1" = 1/4"



**1ST FLOOR PLAN**  
SCALE: 1" = 1/4"

AREA SCHEDULE	
NAME	AREA
Heated	3332.3 sq. ft.
Garage	816.0 sq. ft.
Covered Rear Porch	404.0 sq. ft.
Covered Front Porch	209.5 sq. ft.
Bonus Room	453.2 sq. ft.

Diane Rivers Design  
6205 Mockingbird Lane  
Sanford, N.C. 27332  
919-710-0353  
golhomedesigner.net

DRD

---

SCALE: 1" = 1/4"     DRAWN BY:     DATE: 3/31/2021

---

CUSTOM HOUSE PLAN FOR:  
RANDY & TIFANE CHAMBERS

---

FLOOR PLAN  
W/BONUS ROOM

