

# TOPSAIL

NOTICE TO CONTRACTOR  
All construction must comply with current NC Building Codes  
and is subject to field inspection and verification.

APPROVED

Limited building only review  
Permit holder responsible for  
full compliance with the code

07/26/2021



Inventory Marked

COVER SHEET

## TOPSAIL REVISION LIST - STRUCTURAL:

- 1.) ADDED JOIST SERIES AND SPACING TO SECOND FLOOR FRAMING AND CRAWL (10-17)
- 2.) REMOVED BEDROOM VAULTS AND BALLOON FRAMING (10-17)
- 3.) CHANGED STANDARD HEADER SIZE TO 2 x 6. CALLED OUT 2 x 10 WHERE NECESSARY (10-17)
- 4.) CHANGED TO (3) PLY GARAGE HEADERS (10-17)
- 5.) CODE UPDATE TO NCRC 2018 (1-19)

## TOPSAIL REVISION LIST - ARCHITECTURAL:

CHANGES ON 03-30-2020

1. CHANGED ALL CORNER BOARDS ON ELEVATIONS FROM 6" TO 4"
2. CHANGED NOTE FOR GARAGE LABEL ON ELEVATIONS
3. REMOVED GRIDS FROM ALL WINDOWS & DOORS ON SIDES AND REAR ELEVATIONS
4. UPDATED ALL COACH LIGHTS ON ELEVATIONS
5. REMOVED DUPLICATE DIMENSIONS AND LABELS FROM ALL ELEVATIONS
6. DIMENSIONED STONE/BRICK WATER TABLE HEIGHT
7. HATCHED 4" ROWLOCK ON WINDOWS IN ELEVATIONS WITH STONE AND BRICK
8. UPDATED STONE HATCH TO CURRENT HATCH
9. ADDED COLUMN DETAILS ON B-1 AND B-4 ELEVATIONS
10. REMOVED HARDWARE ON SHUTTERS ON ALL C ELEVATIONS. CHANGED TO SHOW B&B
11. SEPARATED ALL OPTIONS FROM BASE PLAN TO CORRESPONDING SHEETS
12. ADDED DIAGONAL DIMENSION ON SLAB INTERFACE PLAN
13. ADDED PLUMBING DROPS TO SLAB INTERFACE PLAN
14. ADDED CONDUIT IN KITCHEN OF THE SLAB INTERFACE PLAN
15. CHANGED COLUMN ON PATIO TO 8"x8"
16. CHANGED EXTERIOR WALLS FROM 2x6 TO 2x4 EXCEPT AT SHADED AREAS
19. REMOVED ALL 2x6 NOTES
20. UPDATED ALL INTERIOR ROOM DIMENSIONS
21. ADDED HOSE BIBS TO PLANS
22. UPDATED SQUARE FOOTAGES
23. ADDED SQUARE FOOTAGE WITH FULL BRICK VENEER
24. PATIO CHANGED TO 12'x10'
25. FLIPPED TUB AND REMOVED ACCESS AND NOTE FROM OWNER'S BATH 1
26. ADDED NOTE TO LAUNDRY
27. ADDED OPTIONAL FLOOR OUTLETS
28. REMOVED ALL OUTLETS ON ELECTRICAL PLAN (EXCEPT OPT. FLOOR OUTLETS)
29. REMOVED ALL TV OUTLETS
30. REMOVED ALL PHONE OUTLETS
31. SHOWED ALL CEILING FANS DASHED WITH NEW NOTE
32. ADDED CO2 DETECTORS
33. ADDED NEW ELECTRICAL KEY
34. CHANGED SWING OF SERVICE DOOR (7-8-20)
35. CHANGED LIGHT IN GARAGE FROM KEYLESS TO CEILING MOUNT (7-8-20)
36. CHANGED KITCHEN LIGHT FROM 2 BULB FLUORESCENT TO 3 BULB CEILING MOUNT (7-8-20)
37. CHANGED LIGHT OVER KITCHEN SINK TO 1 BULB CEILING MOUNT (7-8-20)
38. REMOVED LIGHT IN SECONDARY BATH OVER TUB/SHOWER COMB (7-8-20)

OKM 000117

H&H HOMES  
TOPSAIL

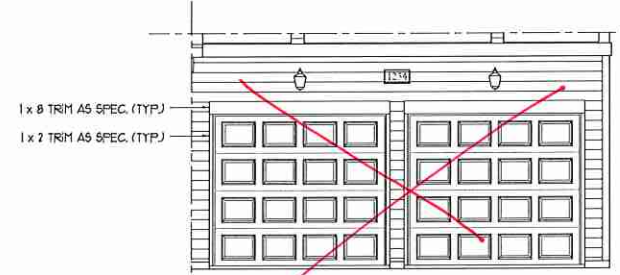
DATE: OCTOBER 13, 2017  
REV.: MARCH 30, 2020  
DRAWN BY: WG  
ENGINEERED BY:  
REVIEWED BY:

CS

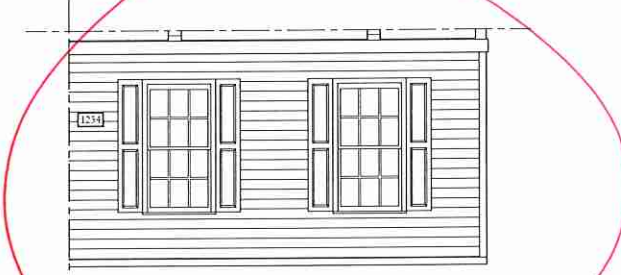


FRONT ELEVATION-A  
SCALE: 1/4" = 1'-0"

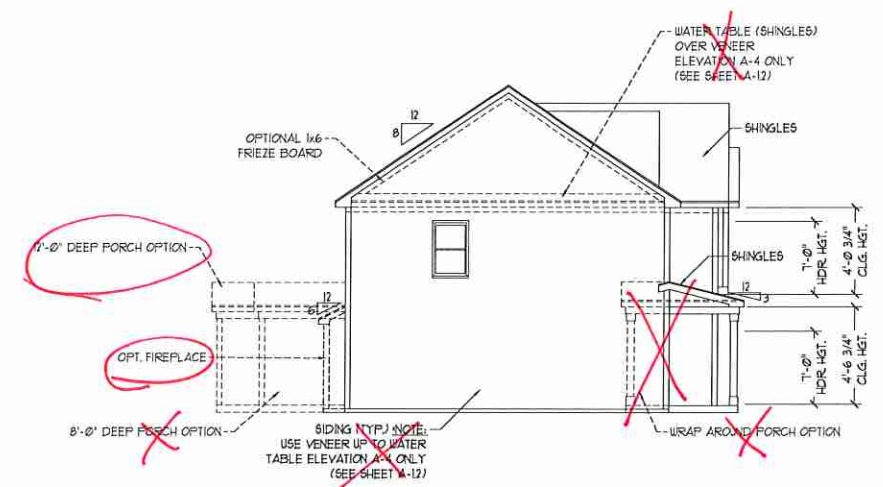
NOTE:  
SEE SHEET A-2.1 FOR BRICK FRONT ELEVATIONS  
SEE SHEET A-2.2 FOR STONE FRONT ELEVATIONS  
SEE SHEET A-2.3 (ALL BRICK) ELEVATIONS



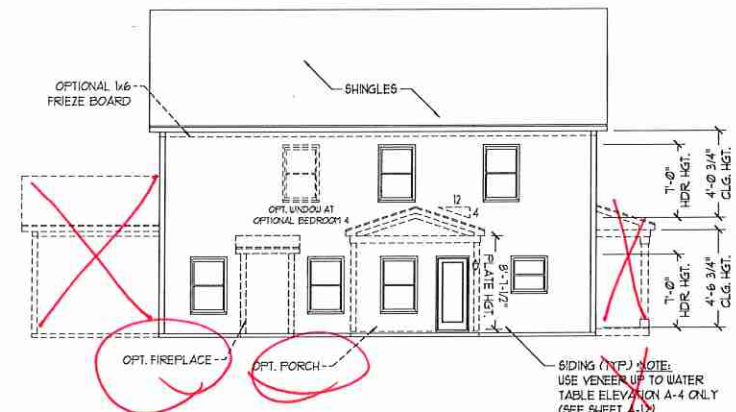
DOUBLE GARAGE DOOR OPTION  
SCALE: 1/4" = 1'-0"



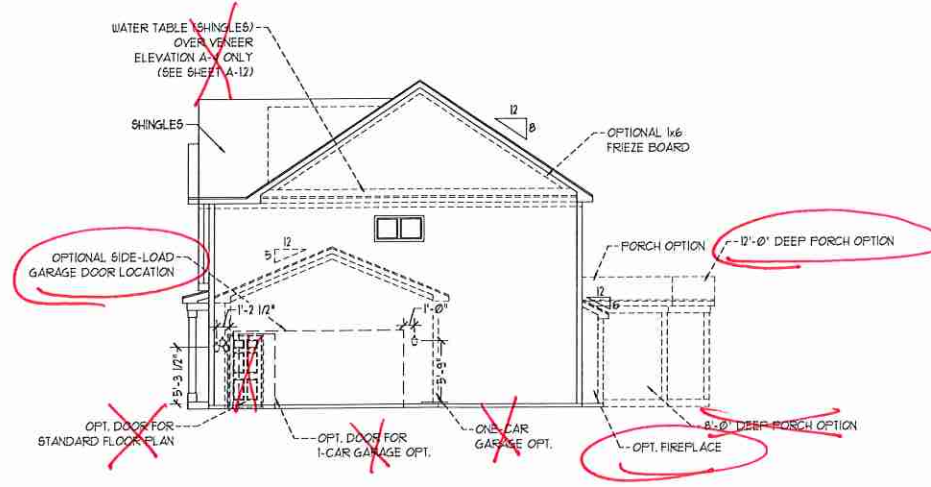
SIDE LOAD GARAGE OPTION  
(NOT AVAILABLE WITH OPTIONAL ONE-CAR GARAGE)  
SCALE: 1/4" = 1'-0"



LEFT ELEVATION  
SCALE: 1/8" = 1'-0"



REAR ELEVATION  
SCALE: 1/8" = 1'-0"



RIGHT ELEVATION  
SCALE: 1/8" = 1'-0"

J.S. THOMPSON  
ENGINEERING, INC.  
400 W. WALKER AVE., SUITE 100  
RALEIGH, NC 27605  
PHONE: (919) 286-9919  
FAX: (919) 286-9921  
N.C. LICENSE NO. C-1235



PRICES, PROMOTIONS, INCENTIVES, FEATURES, OPTIONS, FLOOR PLANS, ELEVATIONS, DESIGNS, AND DIMENSIONS ARE SUBJECT TO CHANGE WITHOUT NOTICE. SQUARE FOOTAGE AND DIMENSIONS ARE ESTIMATED AND MAY VARY IN ACTUAL CONSTRUCTION. ACTUAL POSITION OF HOUSE ON LOT IS DETERMINED BY SURVEY. H&H HOMES, INC. AND ITS AFFILIATES ARE THE SOLE PROPERTY OF H&H HOMES, INC. ANY USE, REPRODUCTION, ADAPTATION, OR DISPLAY OF THE PLANS IS STRICTLY PROHIBITED. © 2017 H&H HOMES

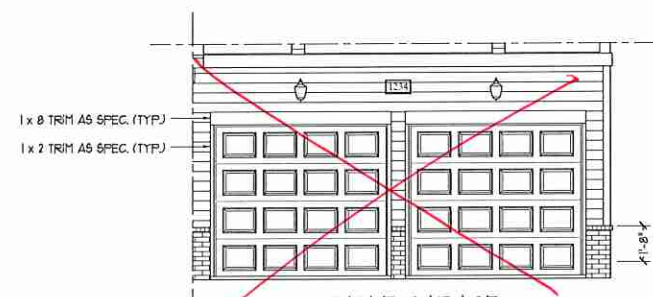
H&H HOMES, INC.  
TOPSAIL

DATE: OCTOBER 13, 2017  
REV: MARCH 30, 2020  
SCALE: AS NOTED  
DRAWN BY:  
ENGINEERED BY:  
REVIEWED BY:

A - ELEVATIONS  
A-1



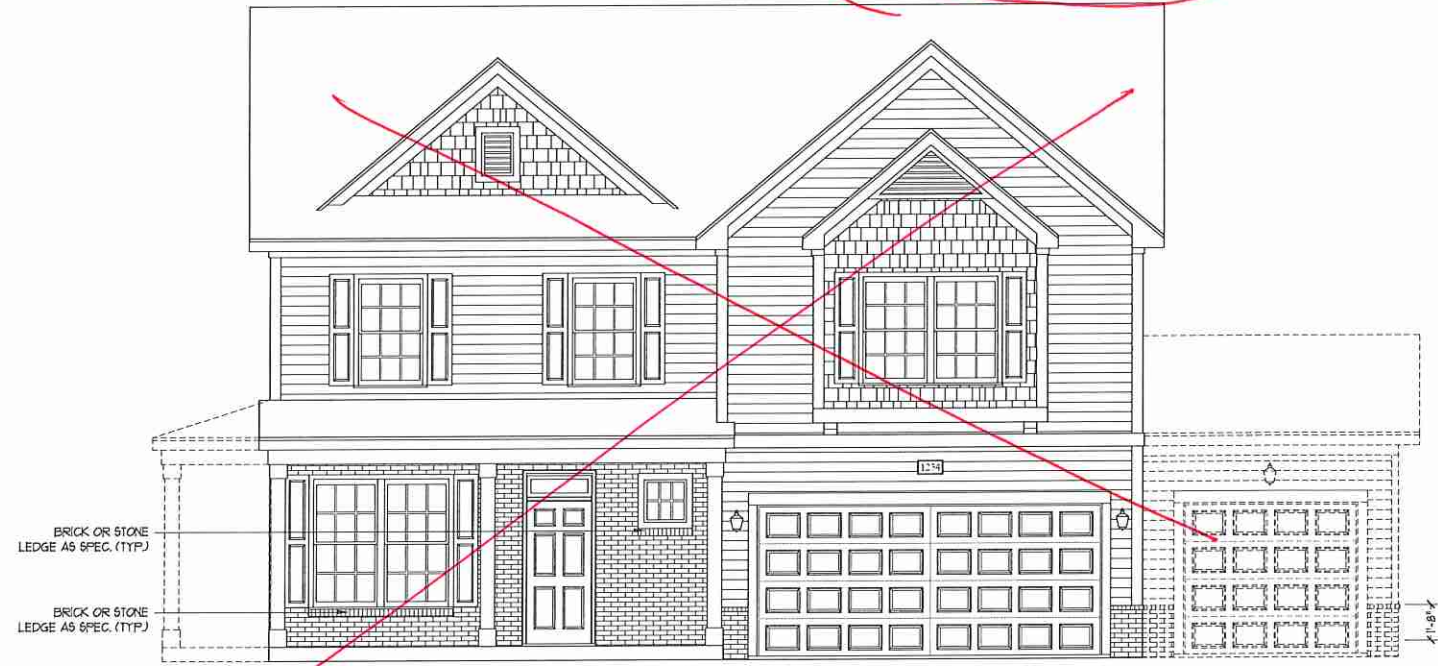
FRONT ELEVATION-A-2  
SCALE: 1/4" = 1'-0"



DOUBLE GARAGE DOOR OPTION  
SCALE: 1/4" = 1'-0"

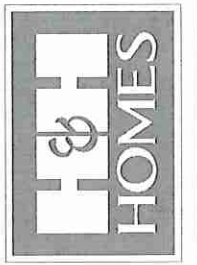


SIDE LOAD GARAGE OPTION  
(NOT AVAILABLE WITH OPTIONAL ONE-CAR GARAGE)  
SCALE: 1/4" = 1'-0"



FRONT ELEVATION-A-3  
SCALE: 1/4" = 1'-0"

**J.S. THOMPSON ENGINEERING, INC.**  
658 WADE AVE., SUITE 104  
RALEIGH, NC 27605  
PHONE: (919) 788-9949  
FAX: (919) 788-9921  
N.C. LICENSE NO. C-1755



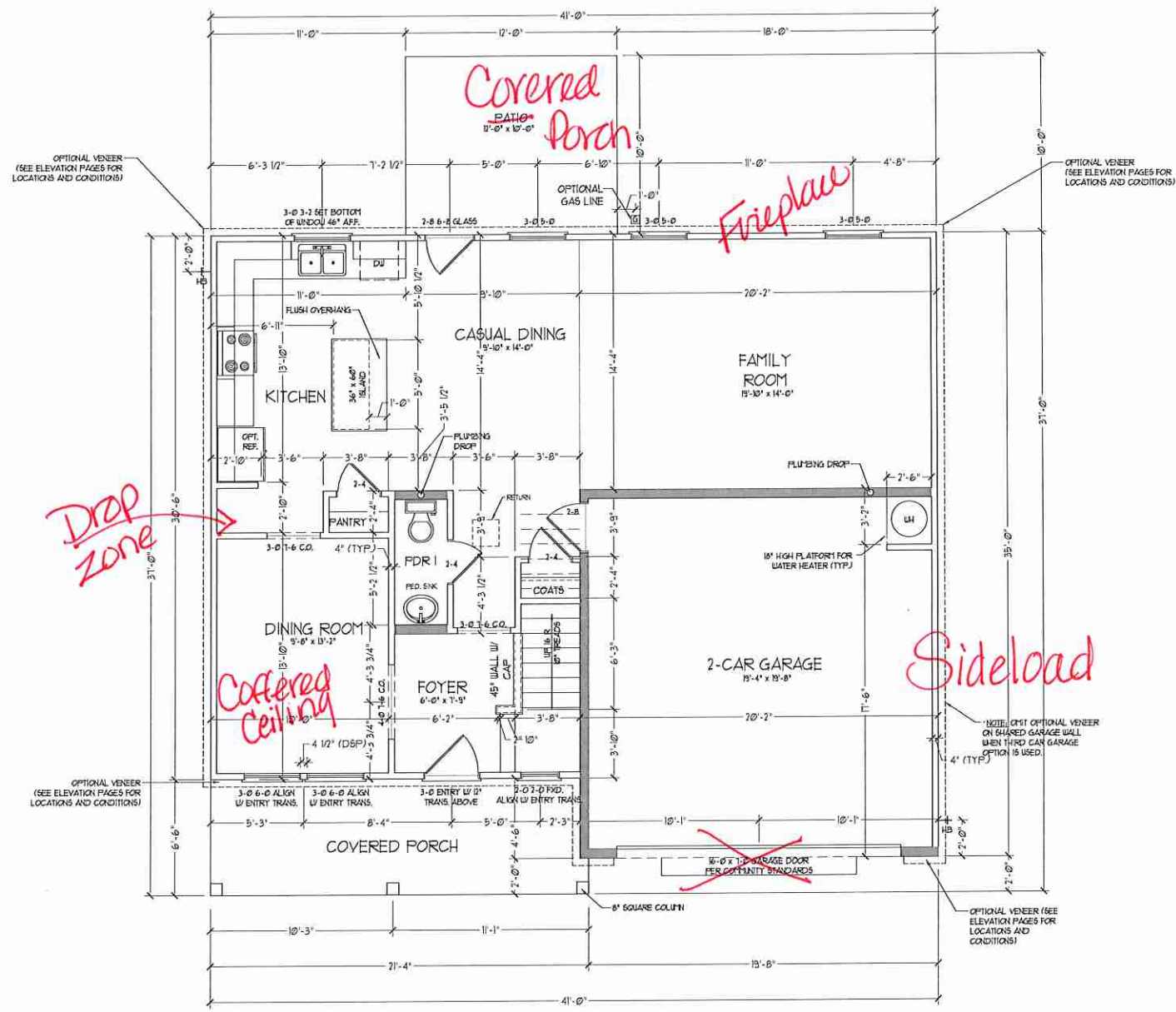
PRICES, PROMOTIONS, INCENTIVES, FEATURES, OPTIONS, FLOOR PLANS, ELEVATIONS, DESIGNS, MATERIALS, FINISHES, AND DIMENSIONS ARE ESTIMATED AND MAY VARY IN ACTUAL CONSTRUCTION. ACTUAL POSITION OF HOUSE ON LOT WILL BE DETERMINED BY THE SITE PLAN AND FLOOR PLAN. CONCEPTS, FLOOR PLANS ARE THE COPYRIGHTED PROPERTY OF H&H HOMES. ANY USE, REPRODUCTION, ADAPTATION, OR DISPLAY OF THE PLANS IS STRICTLY PROHIBITED WITHOUT THE WRITTEN PERMISSION OF H&H HOMES. COPYRIGHT 2017 H&H HOMES

H&H HOMES, INC.  
TOPSAIL

DATE: OCTOBER 13, 2017  
REV.: MARCH 30, 2020  
SCALE: AS NOTED  
DRAWN BY:  
ENGINEERED BY:  
REVIEWED BY:

A - 2 & A - 3  
ELEVATIONS  
BRICK

A-1.1



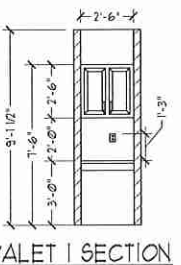
FIRST FLOOR PLAN  
(A1)

SQUARE FOOTAGE	
1st FLOOR:	942 SQ. FT.
2nd FLOOR:	1044 SQ. FT.
TOTAL:	2246 SQ. FT.
GARAGE:	393 SQ. FT.
FRONT PORCH (A 1 C ELEVATIONS):	136 SQ. FT.
FRONT PORCH (B ELEVATIONS):	145 SQ. FT.
REAR COVERED PORCH:	120 SQ. FT.
1st FLOOR OPTIONS:	10 SQ. FT.
OPTIONAL FIREPLACE:	10 SQ. FT.
UNHEATED OPTIONS:	240 SQ. FT.
OPT 1-CAR GARAGE:	10 SQ. FT.
OPT 11'-0" X 10'-0" PORCH:	53 SQ. FT.
OPT WRAP AROUND PORCH (ELEV. A1C):	53 SQ. FT.
OPT WRAP AROUND PORCH (ELEV. B1):	53 SQ. FT.

SQUARE FOOTAGE W/ FULL BRICK VENEER	
1st FLOOR:	938 SQ. FT.
2nd FLOOR:	975 SQ. FT.
TOTAL:	2343 SQ. FT.
GARAGE:	48 SQ. FT.
FRONT PORCH (A 1 C ELEVATIONS):	135 SQ. FT.
FRONT PORCH (B ELEVATIONS):	145 SQ. FT.
REAR COVERED PORCH:	120 SQ. FT.
1st FLOOR OPTIONS:	14 SQ. FT.
OPTIONAL FIREPLACE:	14 SQ. FT.
UNHEATED OPTIONS:	239 SQ. FT.
OPT 1-CAR GARAGE:	10 SQ. FT.
OPT 11'-0" X 10'-0" PORCH:	53 SQ. FT.
OPT WRAP AROUND PORCH (ELEV. A1C):	53 SQ. FT.
OPT WRAP AROUND PORCH (ELEV. B1):	53 SQ. FT.

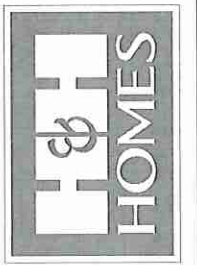
NOTE: ALL EXTERIOR WALLS AND ATTIC WALLS ARE TO BE 7' x 4" #16 O.G. (AND). ALL INTERIOR LOAD BEARING WALLS ARE TO BE 2' x 4" #16 O.G. (AND) AND NON-LOAD BEARING INTERIOR WALLS ARE TO BE 2' x 4" #14 O.G. (AND).  
2x6 WALL  
\* SHADED WALLS ARE TO BE 2' x 6" #16 O.G. (LOAD BEARING) OR 2' x 6" #14 O.G. (NON-LOAD BEARING) REGARDLESS OF EXTERIOR WALL CONDITION.

PROVIDE MINIMUM INSULATION IN CEILINGS AND WALLS PER SECTION N 11021



VALET I SECTION

J.S. THOMPSON  
ENGINEERING, INC.  
600 WALKER AVE., SUITE 101  
RALEIGH, NC 27605  
PHONE: 919 788-9919  
FAX: 919 788-9921  
N.C. LICENSE NO. C-1733



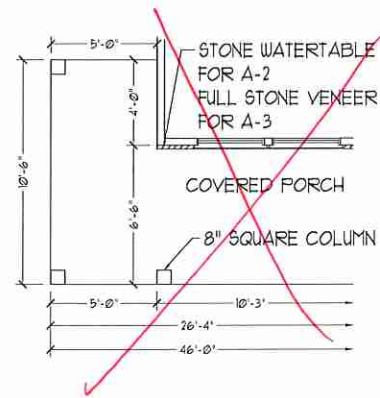
PRICES, PROMOTIONS, INCENTIVES, FEATURES, OPTIONS, FLOOR PLANS, ELEVATIONS, DESIGNS, MATERIALS, AND FINISHES ARE SUBJECT TO CHANGE WITHOUT NOTICE. SQUARE FOOTAGE AND DIMENSIONS ARE ESTIMATED AND MAY VARY IN ACTUAL CONSTRUCTION. ACTUAL POSITION OF HOUSE ON LOT WILL BE DETERMINED BY THE PLANNING AND SURVEY DEPARTMENT. H&H HOMES, INC. IS THE SOLE PROPRIETOR OF THE CONCEPTS, FLOOR PLANS, AND THE COPYRIGHTED PROPERTY OF H&H HOMES, INC. ANY USE, REPRODUCTION, ADAPTATION, OR DISPLAY OF THE PLANS IS STRICTLY PROHIBITED. © 2017 H&H HOMES

H&H HOMES, INC.  
TOPSAIL

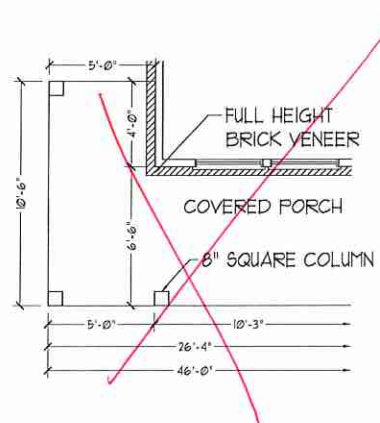
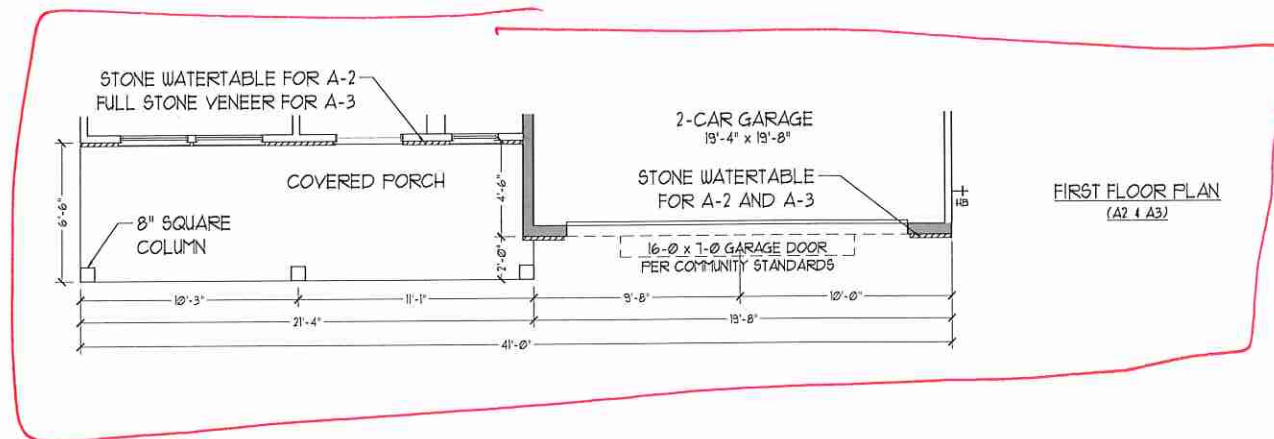
DATE: OCTOBER 13, 2017  
REV.: MARCH 30, 2020  
SCALE: 1/4"=1'-0"  
DRAWN BY:  
ENGINEERED BY:  
REVIEWED BY:

FIRST FLOOR PLAN  
A-5

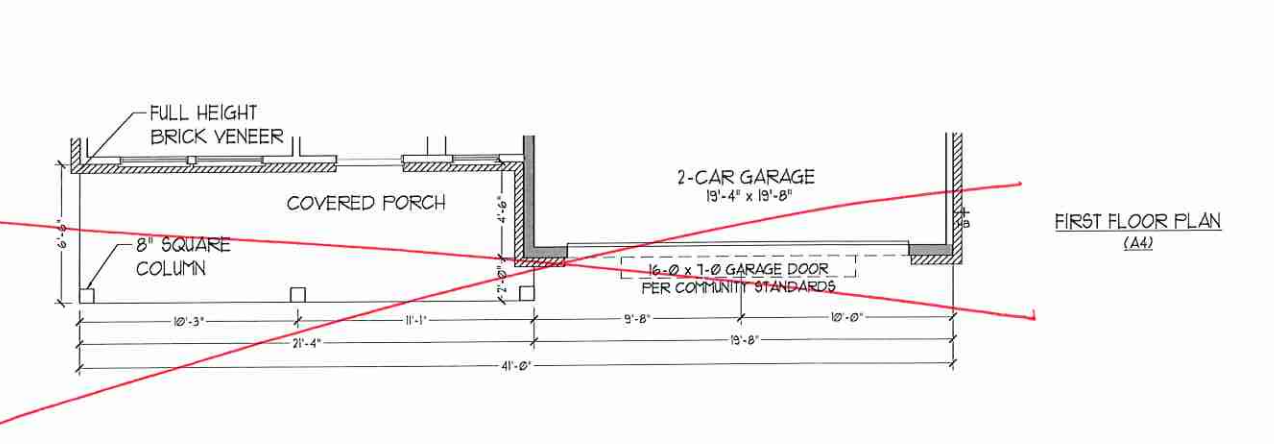




OPTIONAL WRAP  
AROUND PORCH  
(A2 & A3)



OPTIONAL WRAP  
AROUND PORCH  
(A4)



**J.S. THOMPSON**  
ENGINEERING, INC.  
400 WALKER AVE., SUITE 101  
RALEIGH, NC 27605  
PHONE: 919 788-9919  
FAX: 919 788-9921  
N.C. LICENSE NO. C-1133



PRICES, PROMOTIONS, INCENTIVES, FEATURES, OPTIONS, FLOOR PLANS, ELEVATIONS, DESIGNS, MATERIALS, FINISHES, AND DIMENSIONS ARE ESTIMATED AND MAY VARY IN ACTUAL CONSTRUCTION. ACTUAL POSITION OF HOUSE ON LOT WILL BE DETERMINED BY THE SITE PLAN AND FOOT PRINT. CONCEPTS, FLOOR PLANS ARE THE COPYRIGHTED PROPERTY OF H&H HOMES. ANY USE, REPRODUCTION, ADAPTATION, OR DISPLAY OF THE PLANS IS STRICTLY PROHIBITED WITHOUT THE WRITTEN PERMISSION OF H&H HOMES. COPYRIGHT © 2017 H&H HOMES

H&H HOMES, INC.  
TOPSAIL

DATE: OCTOBER 13, 2017  
REV.: MARCH 30, 2020  
SCALE: 1/4" = 1'-0"  
DRAWN BY:  
ENGINEERED BY:  
REVIEWED BY:

FIRST FLOOR PLAN  
A-5.2

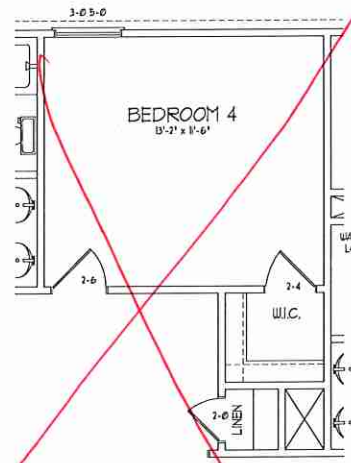


**J.S. THOMPSON**  
**ENGINEERING, INC.**  
 636 WALKER AVE., SUITE 104  
 RALEIGH, NC 27605  
 PHONE: (919) 788-9919  
 FAX: (919) 788-9921  
 N.C. LICENSE NO. C-1235

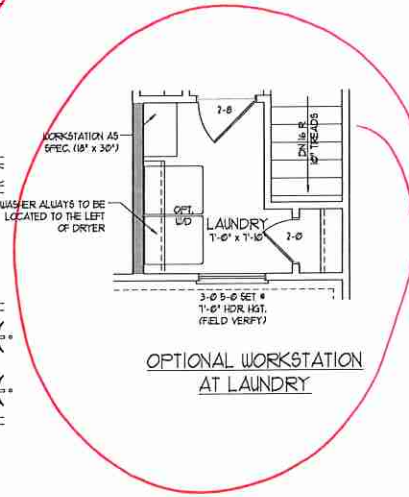


PRICES, PROMOTIONS, INCENTIVES, FEATURES, OPTIONS, FLOOR PLANS, ELEVATIONS, DESIGNS, MATERIALS AND FINISHES ARE SUBJECT TO CHANGE WITHOUT NOTICE AND ARE ESTIMATED. FINISHES ARE ESTIMATED AND MAY VARY IN ACTUAL CONSTRUCTION. ACTUAL POSITION OF HOUSE ON LOT WILL BE DETERMINED BY THE SITE PLAN AND FLOOR PLAN. H&H HOMES, INC. IS THE SOLE PROPRIETOR AND CONCEPTOR OF H&H HOMES. ANY USE, REPRODUCTION, ADAPTATION, OR DISPLAY OF THE PLANS IS STRICTLY PROHIBITED. SEE NEW HOME SALES CONTRACT FOR CURRENT DETAIL. COPYRIGHT © 2017 H&H HOMES

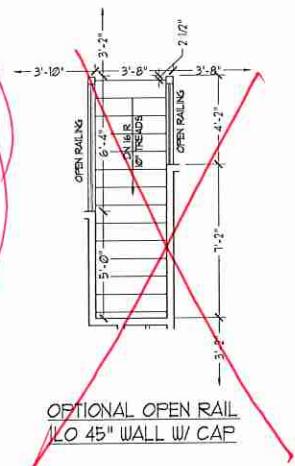
~~OPTIONAL WINDOW AT  
 BEDROOM 4~~



~~OPTIONAL BEDROOM 4  
 I/O LOFT~~



OPTIONAL WORKSTATION  
 AT LAUNDRY



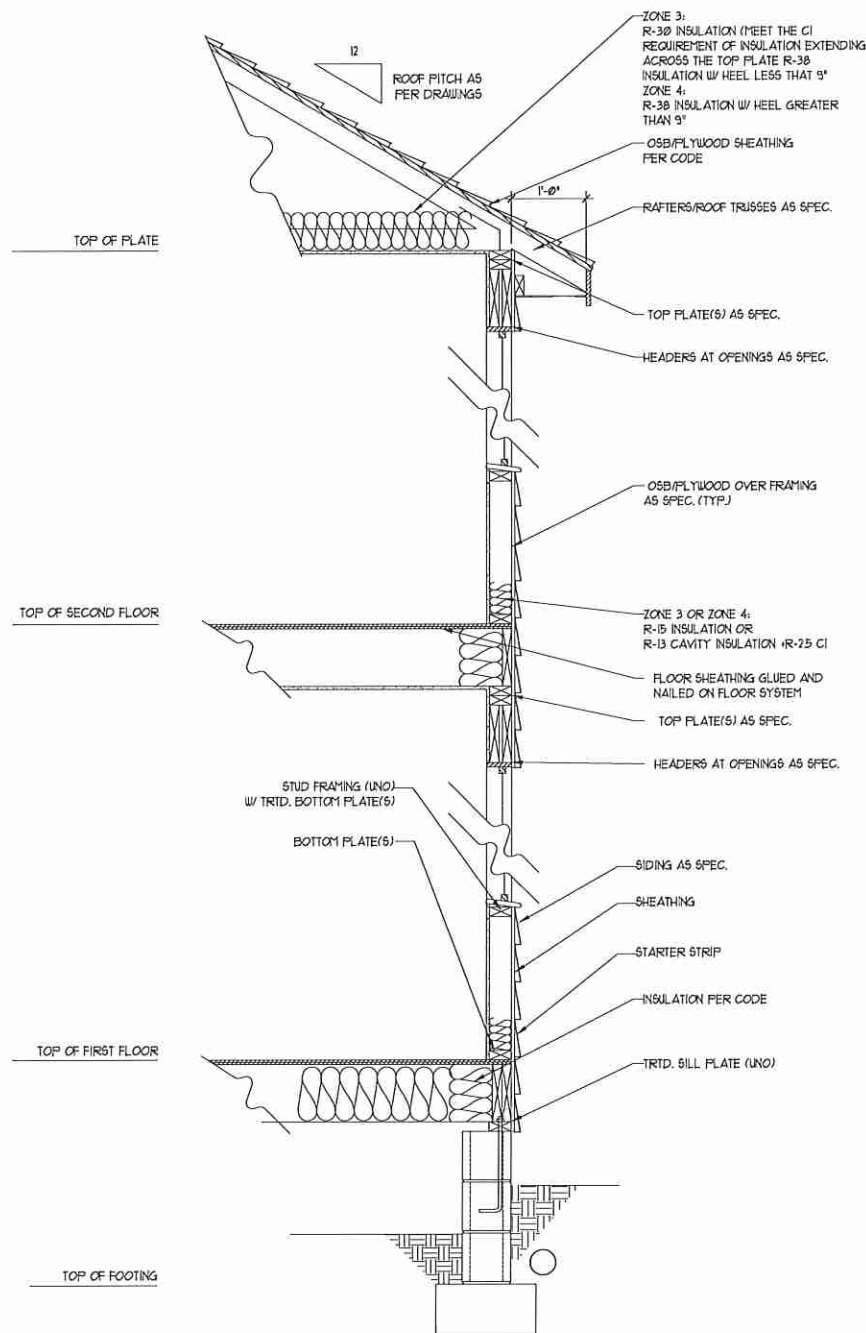
~~OPTIONAL OPEN RAIL  
 I/O 45" WALL W/ CAP~~

H&H HOMES, INC.  
 TOPSAIL

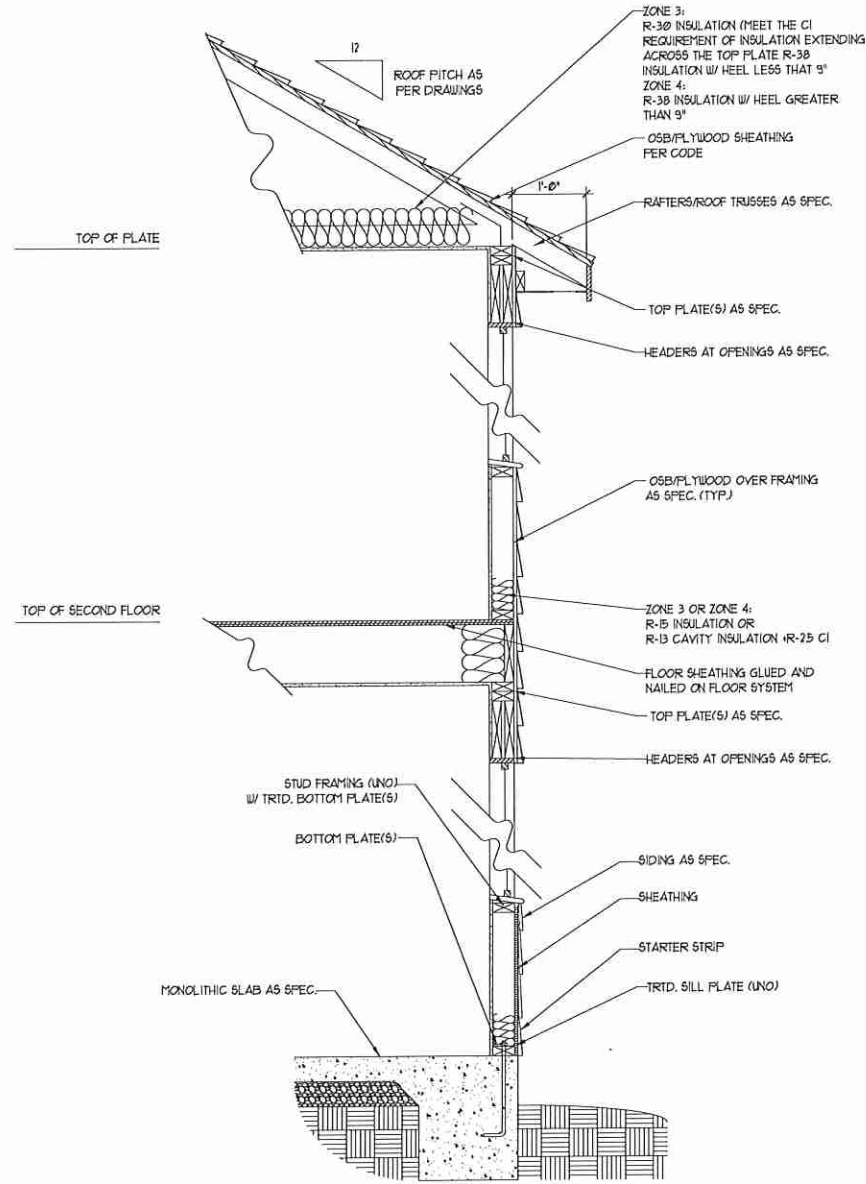
DATE: OCTOBER 13, 2017  
 REV.: MARCH 30, 2020  
 SCALE: 1/4"=1'-0"  
 DRAWN BY:  
 ENGINEERED BY:  
 REVIEWED BY:

SECOND FLOOR  
 PLAN OPTIONS  
 A-6.1

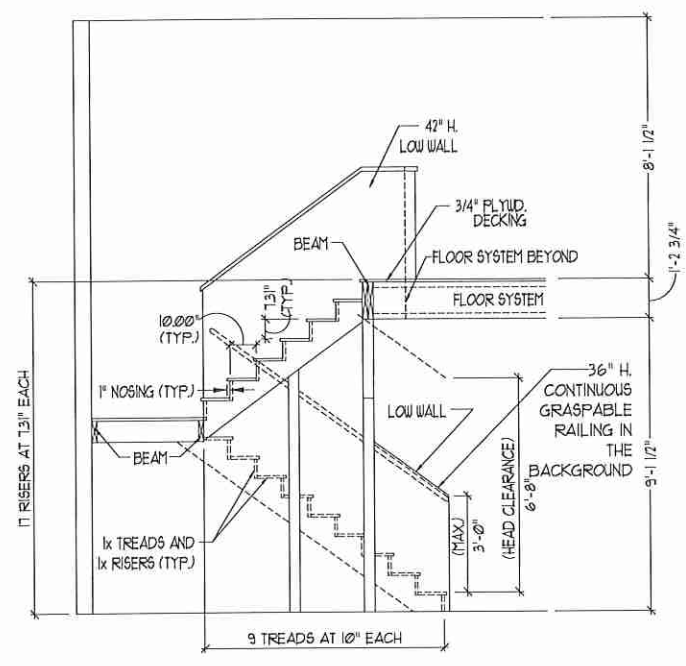




WALL SECTION W/ CRAWL SPACE  
W/ STD. SIDING SHOWN (NTS)



WALL SECTION W/ SLAB  
W/ STD. SIDING SHOWN (NTS)



TYPICAL STAIR DETAIL  
(NTS)

**STAIR NOTES:**

**RAILING:**

BALUSTERS SHALL BE SPACED SO THAT A 4" SPHERE CANNOT PASS THROUGH.

THE TRIANGULAR OPENINGS FORMED BY THE RISER, TREAD AND BOTTOM RAIL OF A GUARD AT THE OPEN SIDE OF A STAIRWAY ARE PERMITTED TO BE A SUCH SIZE THAT A SPHERE OF 6 INCHES CANNOT PASS THROUGH.

OPENINGS FOR REQUIRED GUARDS ON THE SIDES OF STAIR TREADS SHALL NOT ALLOW A SPHERE 4 3/8 INCHES TO PASS THROUGH.

**HANDRAILS:**

HANDRAILS FOR STAIRWAYS SHALL BE CONTINUOUS FOR THE FULL LENGTH OF THE FLIGHT FROM A POINT DIRECTLY ABOVE THE TOP RISER OF THE FLIGHT TO A POINT DIRECTLY ABOVE THE LOWEST RISER. HANDRAIL ENDS SHALL BE RETURNED OR SHALL TERMINATE IN NEWEL POSTS OR SAFETY TERMINALS. HANDRAILS ADJACENT TO A WALL SHALL HAVE A SPACE OF NOT LESS THAN 1-1/2 INCH BETWEEN THE WALL AND HANDRAILS.

CONTINUOUS GRASPABLE HANDRAIL MUST MEET TYPE ONE OR TYPE TWO CRITERIA

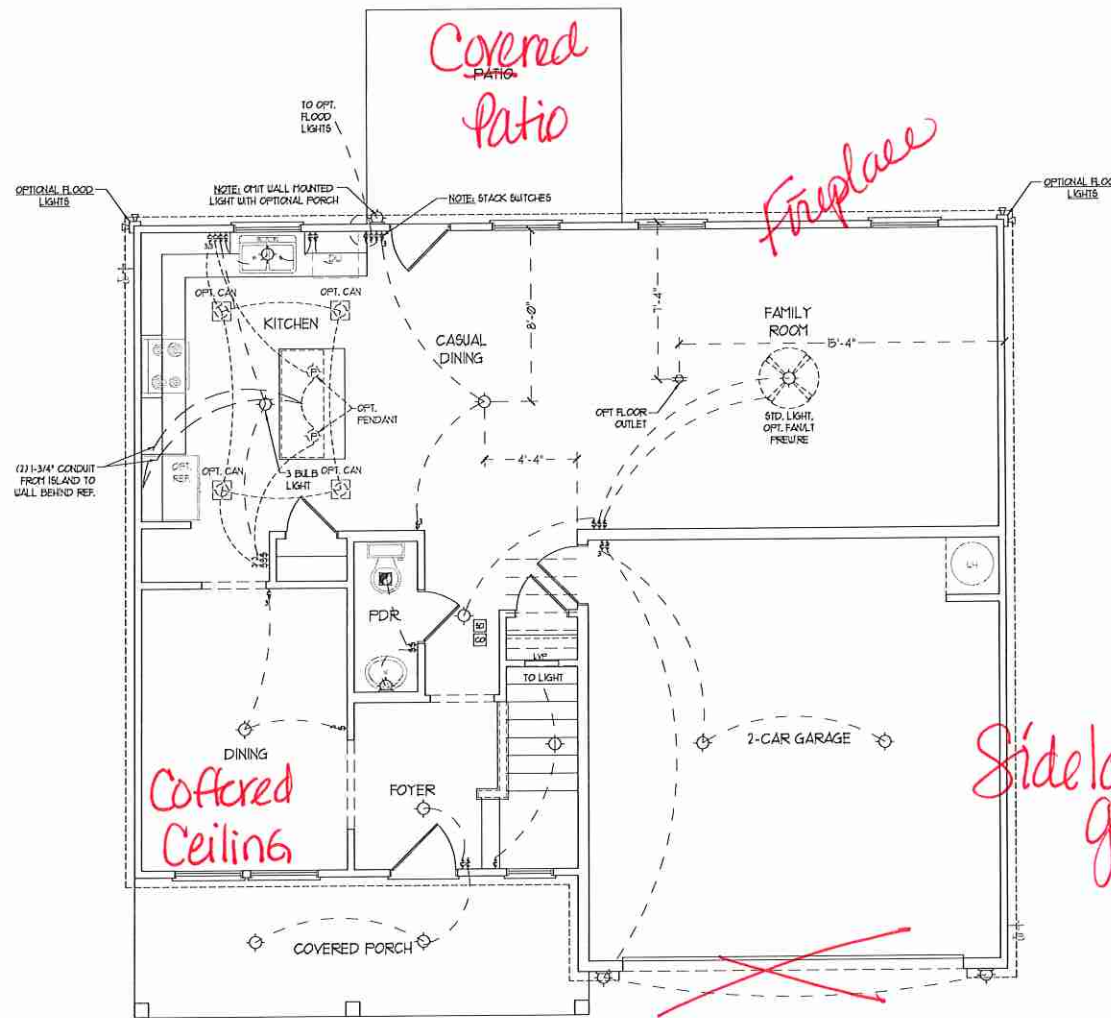
**J.S. THOMPSON  
ENGINEERING, INC.**  
105 WAIVE AVE., SUITE 104  
RALEIGH, NC 27605  
PHONE: (919) 780-9919  
FAX: (919) 780-9921  
N.C. LICENSE NO. C-1135



PRICES, PROMOTIONS, INCENTIVES, FEATURES, OPTIONS, FLOOR PLANS, ELEVATION DESIGNS, MATERIALS AND DIMENSIONS ARE SUBJECT TO CHANGE WITHOUT NOTICE AND MAY VARY IN ACTUAL CONSTRUCTION. ACTUAL POSITION OF HOUSE ON LOT WILL BE DETERMINED BY THE SITE PLAN AND FLOOR PLAN. CONCEPTS IN FLOOR PLANS ARE THE COPYRIGHTED PROPERTY OF H&H HOMES. ANY USE, REPRODUCTION, ADAPTATION, OR DISPLAY OF THE PLANS IS STRICTLY PROHIBITED. SEE H&H HOMES SALES CONTRACT FOR CURRENT TERMS. COPYRIGHT © 2017 H&H HOMES

**H&H HOMES, INC.**  
TOPSAIL

DATE: OCTOBER 13, 2017  
REV.: MARCH 30, 2020  
SCALE: 1/4"=1'-0"  
DRAWN BY:  
ENGINEERED BY:  
REVIEWED BY:  
WALL SECTIONS  
AND STAIR  
DETAIL  
AD-1



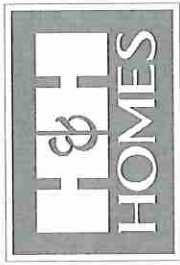
- ELECTRICAL LAYOUT NOTES:**
- 1) BLOCK AND WIRE FOR ALL CEILING FANS PER PLAN
  - 2) WANTY LIGHTS TO BE SET # 30' AFF. (TYP)
  - 3) ADDITIONAL EXTERIOR OUTLETS REQUIRED BY CODE TO BE LOCATED BY ELECTRICIAN
  - 4) PLACE SWITCHES BY (TYP) FROM ROUGH OPENINGS.

**ELECTRICAL LEGEND**

	10 V OUTLET
	WALL MOUNT LIGHT
	CEILING MOUNT LIGHT
	PENDANT LIGHT
	RECESSED CAN LIGHT
	MINI CAN LIGHT
	EYEBALL LIGHT
	FLUORESCENT LIGHT
	2 LAMP, 4' FLUORESCENT LIGHT
	FLOOD LIGHT
	SWITCH
	3-WAY SWITCH
	4-WAY SWITCH
	DIMMER SWITCH
	CONDUIT FOR CONCURRENT WIRING
	SPEAKER
	DOORBELL CHIME
	10 V SMOKE DETECTOR
	CO DETECTOR
	EXHAUST FAN
	LOW VOLTAGE PANEL
	CEILING FAN
	CEILING FAN W/ LIGHT

FIRST FLOOR PLAN

**J.S. THOMPSON ENGINEERING, INC.**  
 400 WALKER AVE., SUITE 104  
 RALEIGH, NC 27605  
 PHONE: (919) 740-9910  
 FAX: (919) 740-9921  
 N.C. LICENSE NO. C-1733

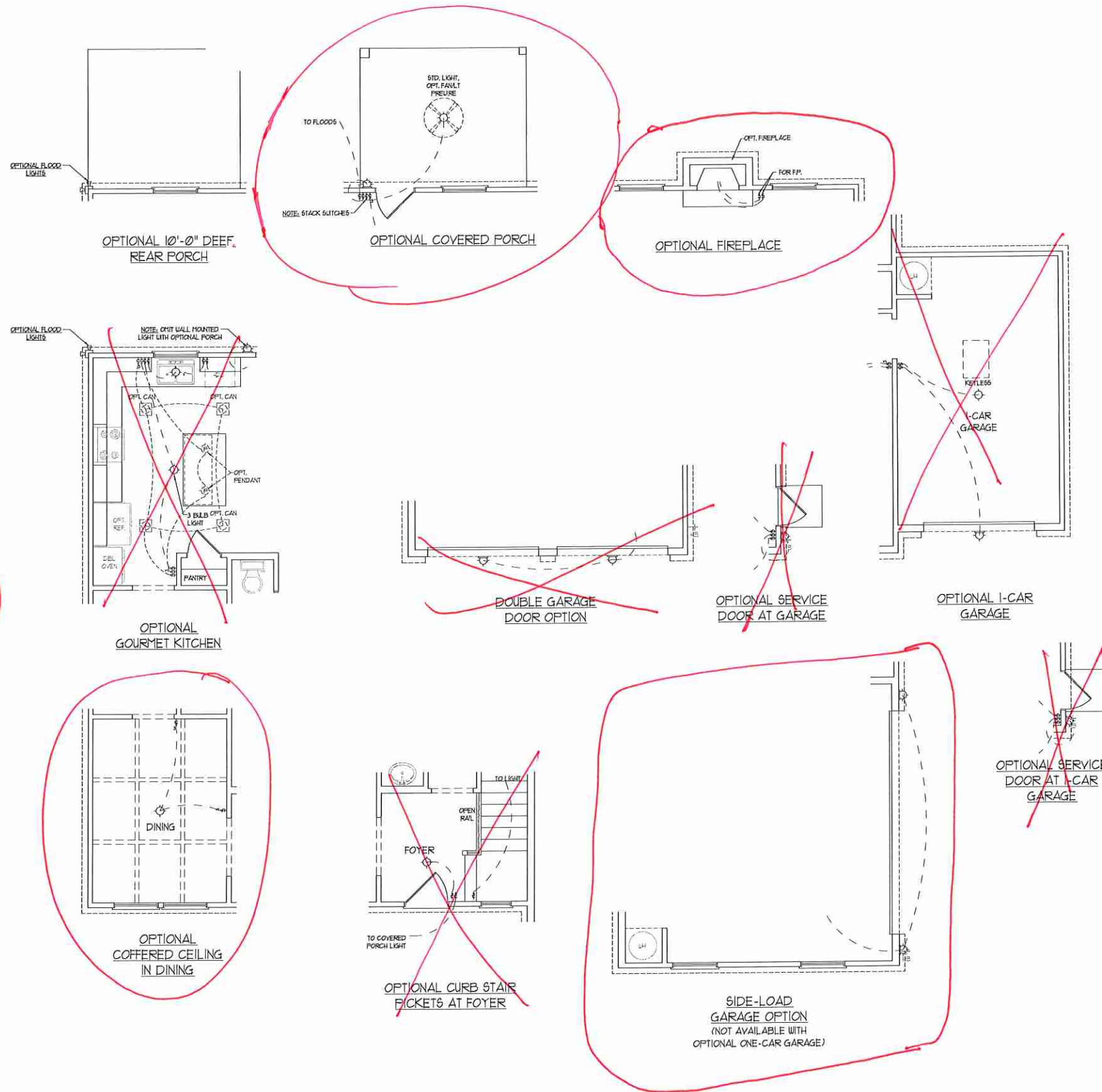


PRICES, PROMOTIONS, INCENTIVES, FEATURES, OPTIONS, FLOOR PLANS, ELEVATIONS, DESIGNS, MATERIALS AND DIMENSIONS ARE SUBJECT TO CHANGE WITHOUT NOTICE. DIMENSIONS AND FINISHES ARE ESTIMATED AND MAY VARY FROM ACTUAL CONSTRUCTION. ACTUAL POSITION OF HOUSE ON LOT WILL BE DETERMINED BY THE SITE PLAN AND PLOT PLAN. THE INFORMATION CONTAINED HEREIN IS THE PROPERTY OF H&H HOMES, INC. ANY REPRODUCTION, ADAPTATION, OR DISPLAY OF THE PLANS IS STRICTLY PROHIBITED. SEE PLAN FOR DETAILS AND SPECIFICATIONS FOR CURRENT DETAILS. COPYRIGHT © 2017 H&H HOMES

H&H HOMES, INC.  
 TOPSAIL

DATE: OCTOBER 13, 2017  
 REV.: MARCH 30, 2020  
 SCALE: 1/4"=1'-0"  
 DRAWN BY:  
 ENGINEERED BY:  
 REVIEWED BY:

FIRST FLOOR ELECTRICAL PLAN



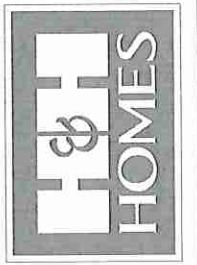
**ELECTRICAL LAYOUT NOTES:**

- 1) BLOCK AND WIRE FOR ALL CEILING FANS PER PLAN.
- 2) VANITY LIGHTS TO BE SET # 50" AFF. (TYP)
- 3) ADDITIONAL EXTERIOR OUTLETS REQUIRED BY CODE TO BE LOCATED BY ELECTRICAL
- 4) PLACE SWITCHES BY ITMU FROM ROUGH OPENINGS.

**ELECTRICAL LEGEND**

	10 V OUTLET
	WALL MOUNT LIGHT
	CEILING MOUNT LIGHT
	PENDANT LIGHT
	RECESSED CAN LIGHT
	MINI CAN LIGHT
	EYEBALL LIGHT
	FLUORESCENT LIGHT
	7 LAMP, 4' FLUORESCENT LIGHT
	FLOOD LIGHT
	SWITCH
	3-WAY SWITCH
	4-WAY SWITCH
	DIMMER SWITCH
	CONDUIT FOR COPPERENT WIRING
	REPEAKER
	DOORBELL CHIME
	110 V SMOKE DETECTOR
	CO DETECTOR
	EXHAUST FAN
	LOW VOLTAGE PANEL
	CEILING FAN
	CEILING FAN BY LIGHT

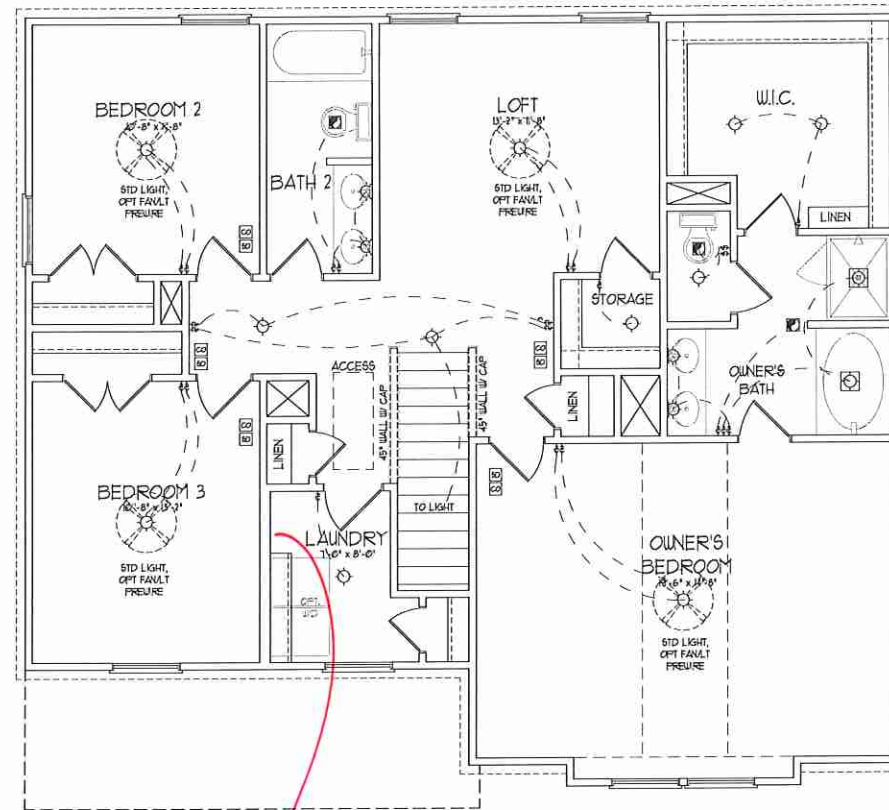
**J.S. THOMPSON ENGINEERING, INC.**  
 100 WADE AVE., SUITE 104  
 RALEIGH, NC 27605  
 PHONE: 919 286-9919  
 FAX: 919 286-9921  
 N.C. LICENSE NO. C-1133



PRICES, PROMOTIONS, INCENTIVES, FEATURES, OPTIONS, FLOOR PLANS, ELEVATIONS, DESIGNS, MATERIALS AND DIMENSIONS ARE SUBJECT TO CHANGE WITHOUT NOTICE AND MAY VARY IN ACTUAL CONSTRUCTION. ACTUAL POSITION OF HOUSE ON LOT WILL BE DETERMINED BY THE SITE PLAN AND FLOOR PLAN. H&H HOMES, INC. AND ITS AFFILIATES ARE THE SOLE PROPERTY OF H&H HOMES, INC. ANY USE, REPRODUCTION, ADAPTATION, OR DISPLAY OF THE PLANS IS STRICTLY PROHIBITED. SEE H&H HOMES SALES CONTRACT FOR CURRENT DETAILS. COPYRIGHT © 2017 H&H HOMES

**H&H HOMES, INC.**  
**TOPSAIL**

DATE: OCTOBER 13, 2017  
 REV.: MARCH 30, 2020  
 SCALE: 1/4" = 1'-0"  
 DRAWN BY:  
 ENGINEERED BY:  
 REVIEWED BY:  
**FIRST FLOOR ELECTRICAL PLAN - OPTIONS**

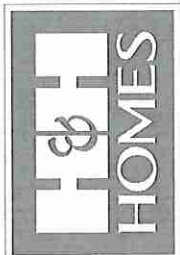


Work Station  
SECOND FLOOR PLAN

- ELECTRICAL LAYOUT NOTES:**
- 1) BLOCK AND WIRE FOR ALL CEILING FANS PER PLAN
  - 2) WASTY LIGHTS TO BE SET # 50' AFF. (TYP.)
  - 3) ADDITIONAL EXTERIOR OUTLETS REQUIRED BY CODE TO BE LOCATED BY ELECTRICIAN
  - 4) PLACE SWITCHES BY (MIN) FROM ROUGH OPENINGS.

ELECTRICAL LEGEND	
	10 V OUTLET
	WALL MOUNT LIGHT
	CEILING MOUNT LIGHT
	PENDANT LIGHT
	RECESSED CAN LIGHT
	MINI CAN LIGHT
	EYEBALL LIGHT
	FLUORESCENT LIGHT
	2 LAMP, 4' FLUORESCENT LIGHT
	FLOOD LIGHT
	SWITCH
	3-WAY SWITCH
	4-WAY SWITCH
	DIMMER SWITCH
	CONDUIT FOR COMPONENT WIRING
	SPEAKER
	DOORBELL CHIME
	10 V SMOKE DETECTOR
	CO DETECTOR
	EXHAUST FAN
	LOW VOLTAGE PANEL
	CEILING FAN
	CEILING FAN w/ LIGHT

**J.S. THOMPSON ENGINEERING, INC.**  
 400 WALKER AVE., SUITE 104  
 RALEIGH, NC 27609  
 PHONE: 919 780 9949  
 FAX: 919 780 0321  
 N.C. LICENSE NO. C-1735



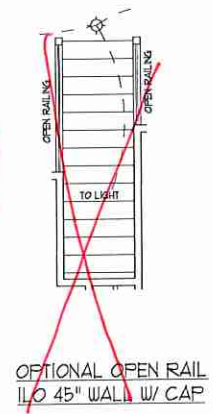
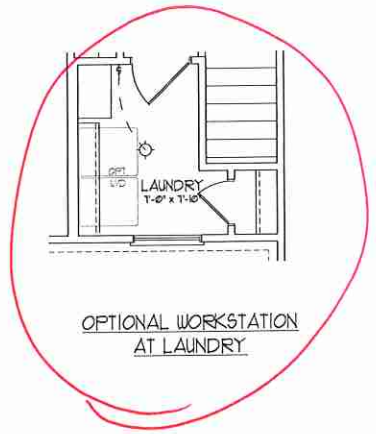
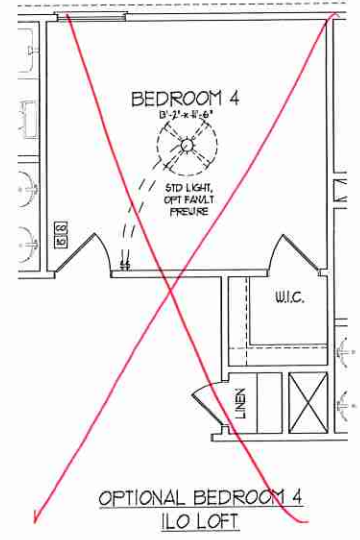
PRICES, PRODUCTIONS, INCENTIVES, FEATURES, OPTIONS, FLOOR PLANS, ELEVATIONS, DESIGNS, MATERIALS, FINISHES, AND DIMENSIONS ARE ESTIMATED AND MAY VARY IN ACTUAL CONSTRUCTION. ACTUAL POSITION OF HOUSE ON LOT WILL BE DETERMINED BY THE SITE PLAN AND LOT PLAN. H&H HOMES, INC. IS THE SOLE PROPRIETOR AND CONCEPTOR OF H&H HOMES. ANY USE, REPRODUCTION, ADAPTATION, OR DISPLAY OF THE PLANS IS STRICTLY PROHIBITED WITHOUT THE WRITTEN PERMISSION OF H&H HOMES. COPYRIGHT © 2017 H&H HOMES.

H&H HOMES, INC.  
TOPSAIL

DATE: OCTOBER 13, 2017  
 REV.: MARCH 30, 2020  
 SCALE: 1/4" = 1'-0"  
 DRAWN BY:  
 ENGINEERED BY:  
 REVIEWED BY:

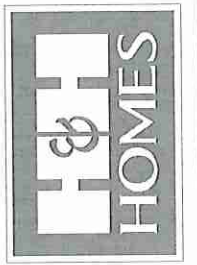
SECOND FLOOR ELECTRICAL PLAN

~~OPTIONAL WINDOW AT  
BEDROOM 4~~



ELECTRICAL LEGEND	
	10 V OUTLET
	WALL MOUNT LIGHT
	CEILING MOUNT LIGHT
	PENDANT LIGHT
	RECESSED CAN LIGHT
	MINI CAN LIGHT
	EYEBALL LIGHT
	FLUORESCENT LIGHT
	2 LAMP, 4' FLUORESCENT LIGHT
	FLOOD LIGHT
	SWITCH
	3-WAY SWITCH
	4-WAY SWITCH
	DIMMER SWITCH
	CONDUIT FOR COMPONENT WIRING
	SPEAKER
	DOORBELL CHIME
	10 V SMOKE DETECTOR
	CO DETECTOR
	EXHAUST FAN
	LOW VOLTAGE PANEL
	CEILING FAN
	CEILING FAN W/ LIGHT

**J.S. THOMPSON  
ENGINEERING, INC.**  
400 WALKER AVE., SUITE 104  
RALEIGH, NC 27605  
PHONE: 919.286.9919  
FAX: 919.286.9921  
N.C. LICENSE NO. C-1733



PRICES, PROMOTIONS, INCENTIVES, FEATURES, OPTIONS, FLOOR PLANS, ELEVATION, DESIGNS, MATERIALS AND DIMENSIONS ARE SUBJECT TO CHANGE WITHOUT NOTICE AND MAY VARY IN ACTUAL CONSTRUCTION. ACTUAL POSITION OF HOUSE ON LOT WILL BE DETERMINED BY THE SITE PLAN AND PLOT PLAN. FLOOR PLANS AND DESIGN PLANS ARE THE SOLE PROPERTY OF H&H HOMES. ANY USE, REPRODUCTION, ADAPTATION, OR DISPLAY OF THE PLANS IS STRICTLY PROHIBITED. SEE NEW HOME SALES CONSULTANT FOR CURRENT DETAILS. COPYRIGHT 2017 H&H HOMES

H&H HOMES, INC.  
TOPSAIL

DATE: OCTOBER 13, 2017  
REV.: MARCH 30, 2020  
SCALE: 1/4" = 1'-0"  
DRAWN BY:  
ENGINEERED BY:  
REVIEWED BY:

SECOND FLOOR  
ELECTRICAL  
PLAN OPTIONS  
E-2.1

**FOUNDATION VENTILATION CALCULATION**

949 SQ. FT. OF CRAWL SPACE DIVIDED BY 8000 EQUALS 0.6 SQ. FT. OF NET FREE AREA REQUIRED. INSTALL 6 MIL POLY TO COVER ENTIRE CRAWL SPACE. LOCATE VENTS WITHIN 3'-0" OF EACH CORNER OF THE BUILDING TO PROVIDE CROSS-VENTILATION.

**50 MPH ULTIMATE DESIGN WIND SPEED NOTES FOR LESS THAN 30' MEAN ROOF HEIGHT:**

- ENGINEER'S SEAL APPLIES ONLY TO STRUCTURAL COMPONENTS. ENGINEER'S SEAL DOES NOT CERTIFY DIMENSIONAL ACCURACY OR ARCHITECTURAL LAYOUT INCLUDING ROOF SYSTEM.
- STRUCTURAL DESIGN PER NORTH CAROLINA RESIDENTIAL CODE, 2009 EDITION WITH SPECIAL CONSIDERATION TO CHAPTER 45 "HIGH WIND ZONES" FOR 50 MPH WINDS.
- BUILDER IS TO PROVIDE FRAMING CONNECTIONS AS REQUIRED BY CHAPTER 45 "HIGH WIND ZONES" FOR 50 MPH WINDS OF THE NORTH CAROLINA RESIDENTIAL CODE, 2009 EDITION.
- FOUNDATION ANCHORAGE TO COMPLY WITH SECTION 1604.04 OF THE NORTH CAROLINA RESIDENTIAL CODE, 2009 EDITION.
- MEAN ROOF HEIGHT IS LESS THAN 30 FEET.
- WALL CLADDING DESIGNED FOR 0.43 PSF AND -0.33 PSF (+/- INDICATE POSITIVE / NEGATIVE PRESSURE (TYP)).
- ROOF CLADDING DESIGNED FOR 0.23 PSF AND -0.18 PSF FOR ROOF PITCHES 1/2 TO 1/12 AND 0.44 PSF AND -0.31 PSF FOR ROOF PITCHES 2/12 TO 1/2.
- 1/4" OSB SHEATHING IS REQUIRED ON ALL EXTERIOR WALLS.
- WALLS TO BE BRACED IN ACCORDANCE WITH SECTION 1607.03 OF THE NORTH CAROLINA RESIDENTIAL CODE, 2009 EDITION AND AS NOTED ON PLANS.
- ENERGY EFFICIENCY COMPLIANCE AND INSULATION VALUES OF THE BUILDING TO BE IN ACCORDANCE WITH CHAPTER 8 OF THE NRC, 2009 EDITION.

**70 MPH ULTIMATE DESIGN WIND SPEED NOTES FOR LESS THAN 30' MEAN ROOF HEIGHT:**

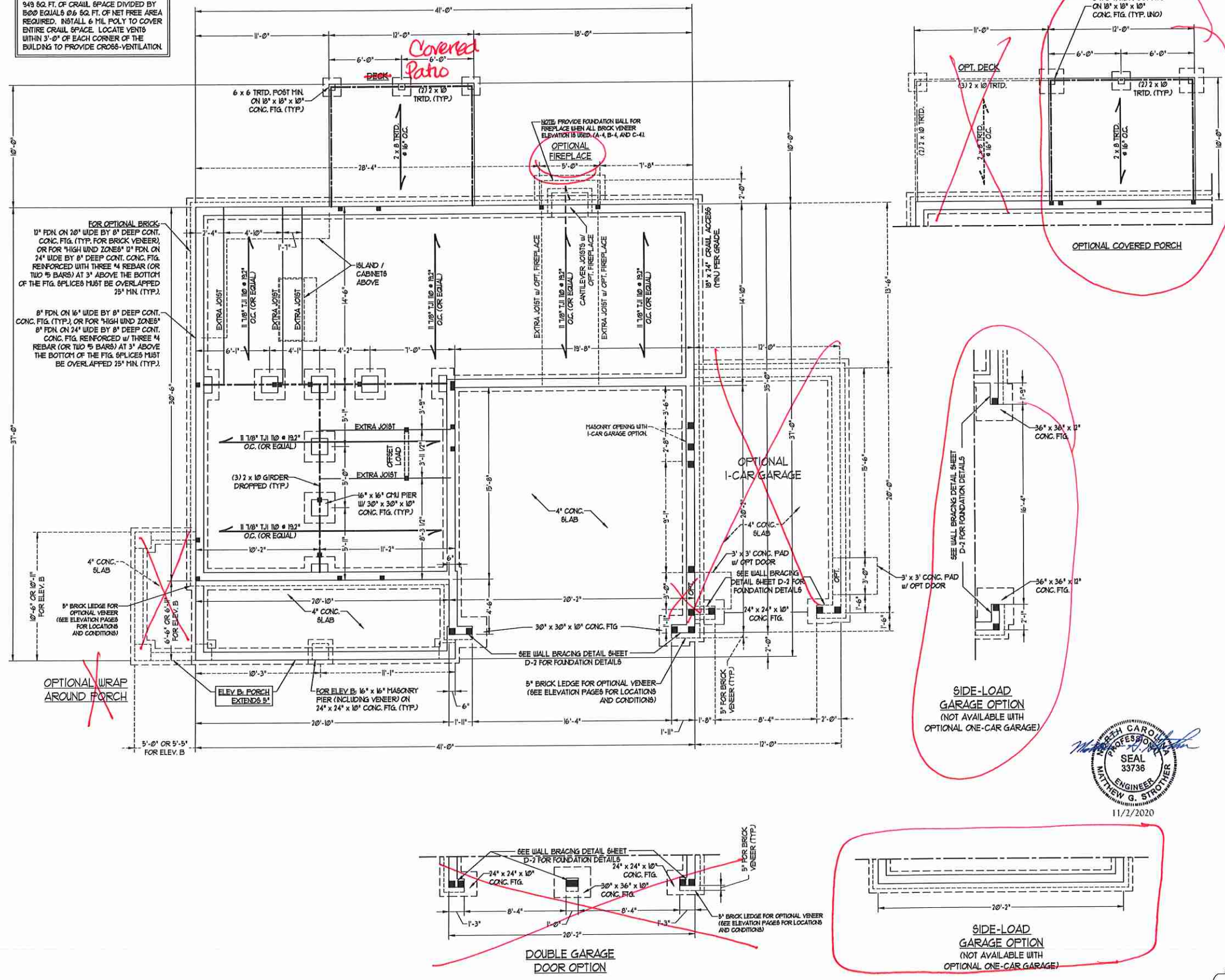
- ENGINEER'S SEAL APPLIES ONLY TO STRUCTURAL COMPONENTS. ENGINEER'S SEAL DOES NOT CERTIFY DIMENSIONAL ACCURACY OR ARCHITECTURAL LAYOUT INCLUDING ROOF SYSTEM.
- STRUCTURAL DESIGN PER NORTH CAROLINA RESIDENTIAL CODE, 2009 EDITION.
- INSTALL 1/2" ANCHOR BOLTS 4'-0" O.C. AND WITHIN 1'-0" FROM END OF EACH CORNER. ANCHOR BOLTS MUST EXTEND A MINIMUM OF 7" INTO MASONRY OR CONCRETE. LOCATE BOLTS IN THE MIDDLE THIRD OF PLATE WITH MEAN ROOF HEIGHT IS LESS THAN 30 FEET.
- EXTERIOR WALLS DESIGNED FOR 80 MPH WIND.
- WALL CLADDING DESIGNED FOR 0.59 PSF AND -0.39 PSF (+/- INDICATE POSITIVE / NEGATIVE PRESSURE (TYP)).
- ROOF CLADDING DESIGNED FOR 0.43 PSF AND -0.33 PSF FOR ROOF PITCHES 1/2 TO 1/12 AND 0.44 PSF AND -0.31 PSF FOR ROOF PITCHES 2/12 TO 1/2.
- INSTALL 1/4" OSB SHEATHING ON ALL EXTERIOR WALLS OF ALL STOREYS IN ACCORDANCE WITH SECTION 1607.03 OF THE NRC, 2009 EDITION. SEE THE WALL BRACING NOTES AND DETAILS SHEET FOR MORE INFORMATION.
- ENERGY EFFICIENCY COMPLIANCE AND INSULATION VALUES OF THE BUILDING TO BE IN ACCORDANCE WITH CHAPTER 8 OF THE NRC, 2009 EDITION.
- REFER TO NOTES AND DETAIL SHEETS FOR ADDITIONAL STRUCTURAL INFORMATION.

**STRUCTURAL NOTES:**

- ALL FRAMING LUMBER TO BE #2 SFF (UNC). ALL TREATED LUMBER TO BE #2 SYP (UNC).
- INSTALL AN EXTRA OR DOUBLE JOIST UNDER WALLS PARALLEL TO FLOOR JOISTS WHERE NOTED ON THE PLANS.
- SQUARES DEVOTE POINT LOADS WHICH REQUIRE SOLID BLOCKING TO GIRDER OR FOUNDATION.
- SHADED PIERS TO BE FILLED SOLID.
- INSTALL LADDER WIRE # 16" O.C. TO SECURE MULTIPLE WITH THE FOUNDATION WALLS TOGETHER.
- REFER TO NOTES AND DETAIL SHEETS FOR ADDITIONAL STRUCTURAL INFORMATION.

**NOTE:**

BCI 4500a-18 I-JOISTS MAY BE USED IN LIEU OF 1 1/2" I-JOISTS AT THE DEPTH AND SPACING NOTED ON THE PLAN.



**J.S. THOMPSON ENGINEERING, INC.**  
 606 WADE AVE. SUITE 104 RALEIGH, NC 27605  
 PHONE: (919) 789-9919 FAX: (919) 789-9921  
 N.C. LICENSE NO.: C-1133

TOPSAIL  
 H&H HOMES

SEAL  
 33738  
 11/2/2020  
 MATHIEU G. STROTHER  
 PROFESSIONAL ENGINEER

DATE: NOVEMBER 2, 2020  
 SCALE: 1/4" = 1'-0"  
 DRAWN BY: H&H HOMES  
 ENGINEERED BY: WTB

SHEET 1 OF 8  
 S-1a  
 CRAWL  
 FOUNDATION PLAN

**BRACED WALL DESIGN NOTES:**

- BRACED WALL DESIGN PER SECTION R607.10 OF THE NCRC 2018 EDITION.
- C5-WSP REFERS TO "CONTINUOUS SHEATHING - WOOD STRUCTURAL PANELS" CONTRACTOR IS TO INSTALL 1/2" OSB ON ALL EXTERIOR WALLS ATTACHED W/ 8d NAILS SPACED 6" O.C. ALONG PANEL EDGES AND 12" O.C. IN THE FIELD.
- GB REFERS TO "GYPSUM BOARD" CONTRACTOR IS TO INSTALL 1/2" (MIN) GYPSUM WALL BOARD WHERE NOTED ON THE PLANS. FASTEN GB WITH 1 1/4" SCREWS OR 1 5/8" NAILS SPACED 12" O.C. ALONG PANEL EDGES AND IN THE FIELD INCLUDING TOP AND BOTTOM PLATES.
- BRACED WALL DESIGN APPLIED IN WIND ZONES UP TO 130 MPH. FOR HIGH WIND ZONES, BRACE WALLS ARE TO BE CONSTRUCTED IN ACCORDANCE WITH CHAPTER 45 OF THE NCRC 2018 EDITION. SEE NOTES AND DETAIL SHEETS FOR ADDITIONAL BRACED WALL INFORMATION.

**NOTE: ALL EXTERIOR WALLS AND ATTIC WALLS ARE TO BE 2 x 6 @ 16" O.C. (UNO). 2 x 4 @ 16" O.C. EXTERIOR WALLS MAY BE CONSTRUCTED IN LIEU OF 2 x 6 WALLS (UNO). ALL INTERIOR LOAD BEARING WALLS ARE TO BE 2 x 4 @ 16" O.C. (UNO) AND NON-LOAD BEARING INTERIOR WALLS ARE TO BE 2 x 4 @ 24" O.C. (UNO).**

**BRACED WALL DESIGN**

RECTANGLE A		RECTANGLE B	
SIDE 1A (FRONT LOAD)	SIDE 1B	SIDE 1B	SIDE 1B
METHOD: C5-WSP/FF/GB	METHOD: C5-WSP/FF	METHOD: C5-WSP/FF	METHOD: C5-WSP/FF
TOTAL REQUIRED LENGTH: 151'	TOTAL REQUIRED LENGTH: 456'	TOTAL REQUIRED LENGTH: 456'	TOTAL REQUIRED LENGTH: 456'
TOTAL PROVIDED LENGTH: 216'	TOTAL PROVIDED LENGTH: 6'	TOTAL PROVIDED LENGTH: 6'	TOTAL PROVIDED LENGTH: 6'
SIDE 2A	SIDE 2B	SIDE 2B	SIDE 2B
METHOD: C5-WSP	METHOD: C5-WSP	METHOD: C5-WSP	METHOD: C5-WSP
TOTAL REQUIRED LENGTH: 151'	TOTAL REQUIRED LENGTH: 456'	TOTAL REQUIRED LENGTH: 456'	TOTAL REQUIRED LENGTH: 456'
TOTAL PROVIDED LENGTH: 206.6'	TOTAL PROVIDED LENGTH: 12'	TOTAL PROVIDED LENGTH: 12'	TOTAL PROVIDED LENGTH: 12'
SIDE 3A (SIDE LOAD)	SIDE 3B	SIDE 3B	SIDE 3B
METHOD: C5-WSP/FF/GB	METHOD: C5-WSP	METHOD: C5-WSP	METHOD: C5-WSP
TOTAL REQUIRED LENGTH: 1155'	TOTAL REQUIRED LENGTH: 313'	TOTAL REQUIRED LENGTH: 313'	TOTAL REQUIRED LENGTH: 313'
TOTAL PROVIDED LENGTH: 2012'	TOTAL PROVIDED LENGTH: 15.58'	TOTAL PROVIDED LENGTH: 15.58'	TOTAL PROVIDED LENGTH: 15.58'
SIDE 4A	SIDE 4B/CUMULATIVE	SIDE 4B/CUMULATIVE	SIDE 4B/CUMULATIVE
METHOD: C5-WSP	METHOD: C5-WSP/FF/GB	METHOD: C5-WSP/FF/GB	METHOD: C5-WSP/FF/GB
TOTAL REQUIRED LENGTH: 1155'	TOTAL REQUIRED LENGTH: 2074'	TOTAL REQUIRED LENGTH: 2074'	TOTAL REQUIRED LENGTH: 2074'
TOTAL PROVIDED LENGTH: 35'	TOTAL PROVIDED LENGTH: 3145'	TOTAL PROVIDED LENGTH: 3145'	TOTAL PROVIDED LENGTH: 3145'

**TABLE R607.15**  
MINIMUM NUMBER OF FULL HEIGHT STUDS AT EACH END OF HEADERS IN EXTERIOR WALLS

HEADER SPAN (FEET)	MAXIMUM STUD SPACING (INCHES) (PER TABLE R607.15)	16	24
UP TO 3'	1	1	1
4'	2	2	2
6'	3	3	3
8'	4	4	4
10'	5	5	5
12'	6	6	6

**STRUCTURAL NOTES:**

- ALL FRAMING LUMBER TO BE 6PP 1/2 (UNO). ALL TREATED LUMBER TO BE 6PP 1/2 (UNO).
- ALL LOAD BEARING HEADERS TO BE (2) 2 x 6 (UNO).
- INSTALL AN EXTRA JOIST UNDER WALLS PARALLEL TO FLOOR JOISTS WHERE NOTED ON THE PLANS.
- WINDOW AND DOOR HEADERS TO BE SUPPORTED W/ (1) JACK STUD AND (1) KING STUD EA END (UNO). SEE TABLE R607.15 FOR ADDITIONAL KING STUD REQUIREMENTS.
- SQUARES DENOTE POINT LOADS WHICH REQUIRE SOLID BLOCKING TO GIRDER OR FOUNDATION. ALL SQUARES TO BE (2) STUDS (UNO).
- FOR HIGH WIND ZONES, ALL EXTERIOR WALLS TO BE SHEATHED WITH 1/2" OSB SHEATHING WITH JOISTS BLOCKED AND SECURED WITH 8d NAILS AT 3" O.C. ALONG EDGES AND 6" O.C. IN THE FIELD.
- FOR HIGH WIND ZONES, SECURE ALL EXTERIOR WALL SHEATHING PANELS TO DOUBLE TOP PLATES, BANDS, JOISTS, AND GIRDERS WITH (2) ROWS OF 8d NAILS STAGGERED AT 3" O.C. PANELS SHALL EXTEND 12" BEYOND CONSTRUCTION JOINTS AND SHALL OVERLAP GIRDERS AND DOUBLE SILL PLATES THEIR FULL DEPTH.
- ALL 4 x 4 POSTS SHALL BE ANCHORED TO SLABS W/ SHIMPOK ABU44 POST BASES (OR EQUAL) AND 6 x 6 POSTS W/ ABU66 POST BASES (OR EQUAL) (UNO). ALL 4 x 4 AND 6 x 6 POSTS TO BE INSTALLED WITH 100 LB CAPACITY UPLIFT CONNECTORS AT TOP (UNO).
- FOR FIBERGLASS, ALUMINUM, OR COLUMN ENG. BY OTHERS, SECURE TO SLAB W/ (2) METAL ANGLES USING 2" CONC. SCREWS. FASTEN ANGLES TO COLUMNS W/ 1/4" THROUGH BOLTS W/ NUTS AND WASHERS. LOCATE ANGLES ON OPPOSITE SIDES OF COLUMN. THROUGH BOLTS MUST BE INSTALLED PRIOR TO SETTING COLUMN.
- REFER TO NOTES AND DETAIL SHEETS FOR ADDITIONAL STRUCTURAL INFORMATION.

**NOTE:**

BCI 4500A-18 I-JOISTS MAY BE USED IN LIEU OF TJI 110 I-JOISTS AT THE DEPTH AND SPACINGS NOTED ON THE PLAN.

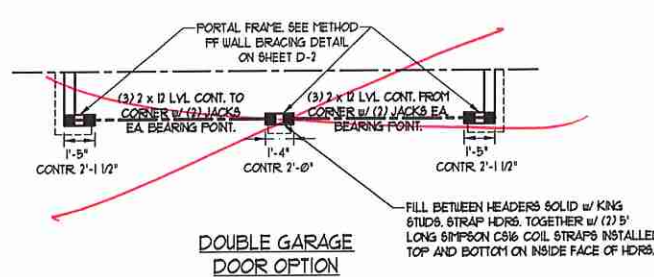
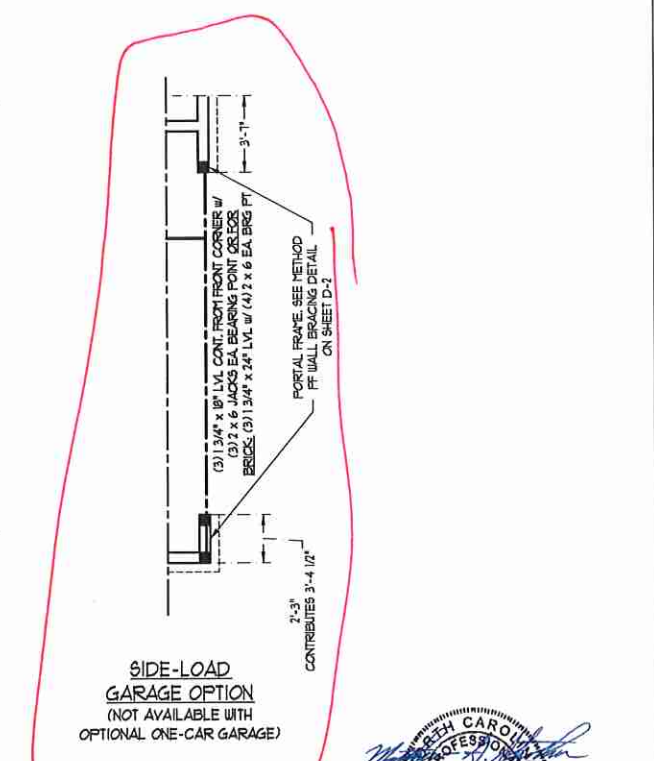
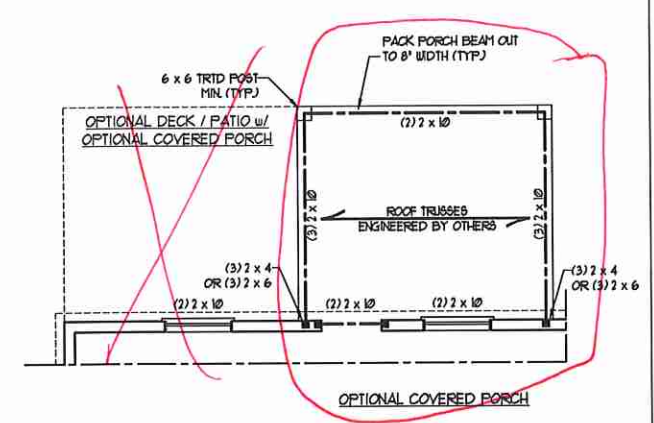
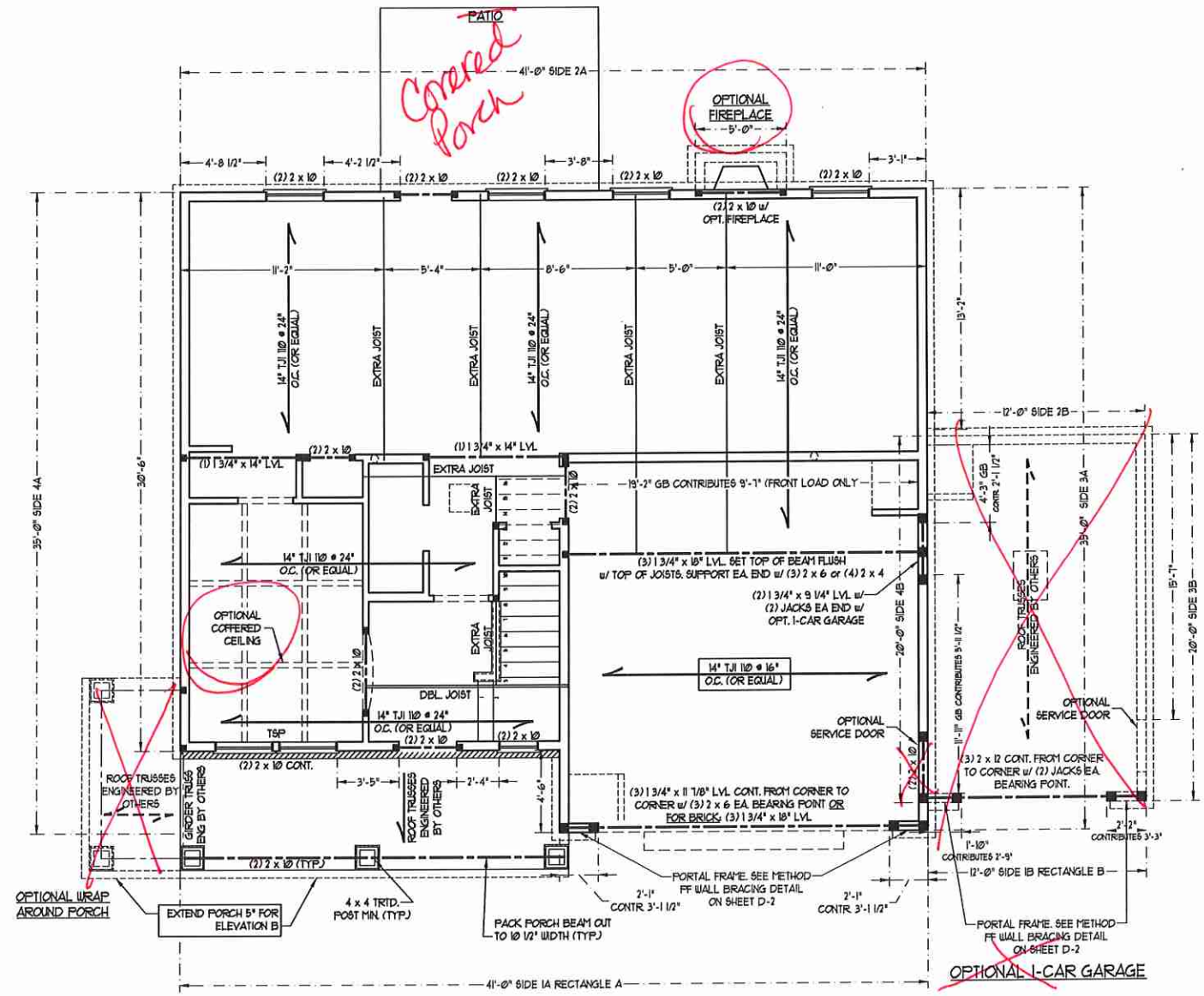
D&P - DOUBLE STUD POCKET  
T&P - TRIPLE STUD POCKET

**LINTEL SCHEDULE FOR BRICK/NATURAL STONE SUPPORT**

LENGTH (FT.)	SIZE OF LINTEL
UP TO 4 FT.	L 3 1/2 x 3 1/2 x 1/4
4-8	L 5 x 3 1/2 x 5/16 LLY
8 AND GREATER	L 6 x 4 x 5/16 LLY

**BRICK SUPPORT NOTES:**

- LINTEL SCHEDULE APPLIES TO ALL OPENINGS IN BRICK VENEER (UNO). SEE ARCH DWGS. FOR SIZE AND LOCATION OF OPENINGS.
- (LLV) - LONG LEG VERTICAL
- LENGTH = CLEAR OPENING
- EMBED ALL ANGLE IRONS MIN. 4" EACH SIDE INTO VENEER TO PROVIDE BEARING.
- FOR ALL HEADERS 8'-0" AND GREATER IN LENGTH, ATTACH STEEL ANGLE TO HEADER W/ 1/2" LAG SCREWS @ 12" O.C. STAGGERED.
- FOR ALL BRICK SUPPORT @ ROOF LINES, FASTEN (2) 2 x 10 BLOCKING BETWEEN STUDS W/ (4) 1/2" NAILS PER FLY. FASTEN A 6" x 4" x 5/16" STEEL ANGLE TO (2) 2 x 10 BLOCKING W/ (2) 1/2" LAG SCREWS @ 12" O.C. STAGGERED. SEE SECTION R103.8.21 OF THE 2018 NCRC FOR ADDITIONAL BRICK SUPPORT INFORMATION.
- PRECAST REINFORCED CONCRETE LINTEL6 ENGINEERED BY OTHERS MAY BE USED IN LIEU OF STEEL LINTELS.



**J.S. THOMPSON ENGINEERING, INC.**  
605 WADE AVE., SUITE 104 RALEIGH, NC 27605  
PHONE: (919) 789-9919 FAX: (919) 789-9921  
N.C. LICENSE NO.: C1733

**TOPSAIL H&H HOMES**

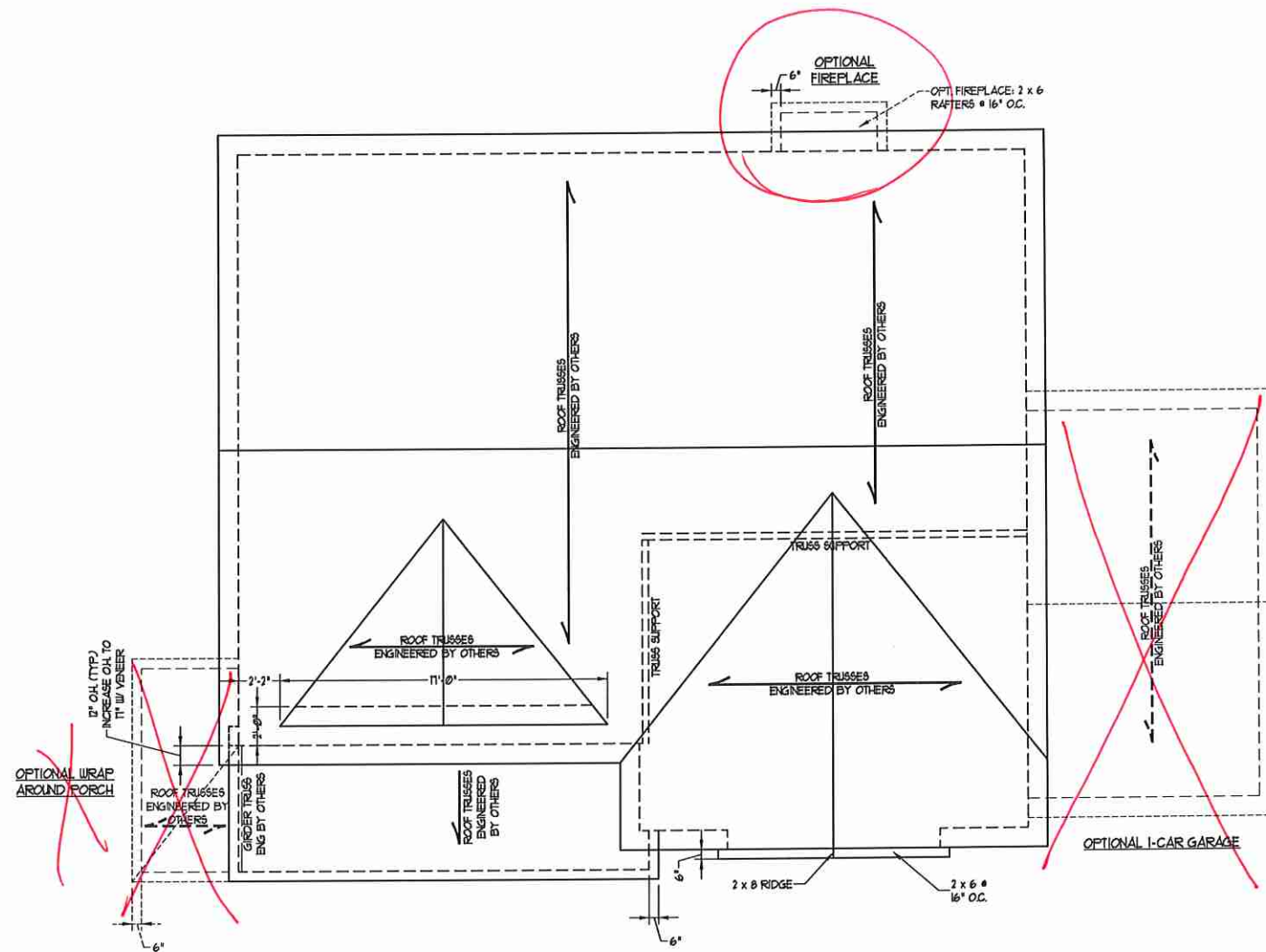
SEAL  
33738  
11/2/2021

DATE: NOVEMBER 2, 2020  
SCALE: 1/4" = 1'-0"  
DRAWN BY: H&H HOMES  
ENGINEERED BY: WFR

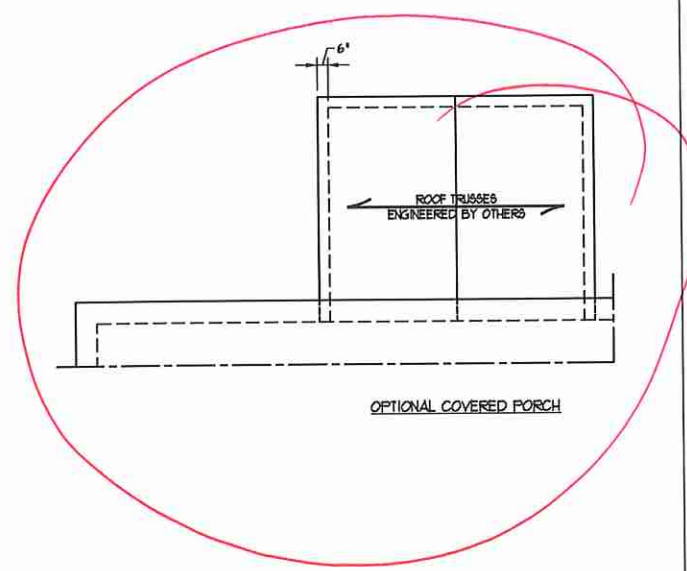
SHEET 4 OF 8  
S-2  
SECOND FLOOR FRAMING PLAN







ELEVATION A



OPTIONAL COVERED PORCH

- STRUCTURAL NOTES:**
1. ALL FRAMING LUMBER TO BE #2 SFF (UND).
  2. CIRCLES DENOTE (3) 2 x 4 POSTS FOR ROOF SUPPORT.
  3. FRAME DORMER WALLS ON TOP OF DOUBLE OR TRIPLE RAFTERS.
  4. HIP SPLICES ARE TO BE SPACED A MIN. OF 8'-0". FASTEN MEMBERS WITH THREE ROWS OF 12d NAILS @ 16" O.C. (TYP).
  5. STICK FRAME OVER-FRAMED ROOF SECTIONS W/ 2 x 8 RIDGES, 2 x 6 RAFTERS @ 16" O.C. AND FLAT 2 x 10 VALLEYS OR USE VALLEY TRUSSES.
  6. FASTEN FLAT VALLEYS TO RAFTERS OR TRUSSES WITH SIMPSON H25A HURRICANE TIES @ 32" O.C. MAX. PASS HURRICANE TIES THROUGH NOTCH IN ROOF SHEATHING. EACH RAFTER IS TO BE FASTENED TO THE FLAT VALLEY WITH A MIN. OF (6) 12d TIE NAILS.
  7. REFER TO SECTION R802.1 OF THE 2018 NRC FOR REQUIRED UPLIFT RESISTANCE AT RAFTERS AND TRUSSES.
  8. REFER TO NOTES AND DETAIL SHEETS FOR ADDITIONAL STRUCTURAL INFORMATION.

- BRICK SUPPORT NOTE:**
1. FASTEN (2) 2 x 10 BLOCKING BETWEEN WALL STUDS w/ (4) 12d NAILS PER FLY. FASTEN A 6" x 4" x 5/16" STEEL ANGLE TO (2) 2 x 10 BLOCKING w/ (2) 1/2" LAG SCREWS @ 12" O.C. STAGGERED. SEE SECTION R103.02.1 OF THE 2018 NRC FOR ADDITIONAL BRICK SUPPORT INFORMATION.
  2. WHERE ROOF SLOPES EXCEED 1:10, INSTALL 3" x 3" x 1/4" STEEL PLATE STOPS AT 24" O.C. PER SECTION R103.02.1 OF THE NORTH CAROLINA RESIDENTIAL CODE, 2018 EDITION.

**J.S. THOMPSON ENGINEERING, INC.**  
 600 WADE AVE., SUITE 104 RALEIGH, NC 27605  
 PHONE: (919) 789-5656 FAX: (919) 789-9921  
 N.C. LICENSE NO.: 011733

TOPSAIL  
 H&H HOMES

DATE: NOVEMBER 2, 2020  
 SCALE: 1/4" = 1'-0"  
 DRAWN BY: H&H HOMES  
 ENGINEERED BY: WFB

SHEET: 6 OF 8  
 S-4a  
 ROOF FRAMING PLAN



11/2/2020

MONOLITHIC SLAB DETAILS

**DETAIL 1**

TYPICAL SLAB DETAIL

**DETAIL 2**

BRICK VENEER DETAIL

**DETAIL 3**

GARAGE CURB DETAIL

**DETAIL 4**

GARAGE CURB BRICK LEDGE DETAIL

**DETAIL 5**

THICKENED SLAB DETAIL

**DETAIL 6**

STEP IN GARAGE DETAIL

**DETAIL 7**

SLAB AT GARAGE DOOR DETAIL

STEMWALL DETAILS

**DETAIL 1**

TYPICAL STEM WALL DETAIL (w/ OPTIONAL WATERTABLE)

**OPTIONAL DETAIL 1**

OPTIONAL STEM WALL DETAIL

**DETAIL 2**

TYPICAL STEM WALL FND. W/ BRICK DETAIL

**DETAIL 3**

TYPICAL STEM WALL FND. DETAIL w/ CURB @ GARAGE

**OPTIONAL DETAIL 3**

OPTIONAL STEM WALL FND. DETAIL w/ CURB @ GARAGE

**DETAIL 4**

TYPICAL STEM WALL FND. DETAIL W/ BRICK AND CURB @ GARAGE

**DETAIL 8**

THREADED ROD THROUGH BRICK MASONRY

MASONRY STEMWALL SPECIFICATIONS

WALL HEIGHT (FEET)	MASONRY WALL TYPE			
	8" CMU	4" BRICK AND 4" CMU	4" BRICK AND 8" CMU	12" CMU
2 AND BELOW	UNGROUTED	GROUT SOLID	UNGROUTED	UNGROUTED
3	UNGROUTED	GROUT SOLID	UNGROUTED	UNGROUTED
4	GROUT SOLID	GROUT SOLID w/ 1/4 REBAR @ 48" O.C.	GROUT SOLID	GROUT SOLID w/ 1/4 REBAR @ 64" O.C.
5	GROUT SOLID w/ 1/4 REBAR @ 36" O.C.	NOT APPLICABLE	GROUT SOLID w/ 1/4 REBAR @ 36" O.C.	GROUT SOLID w/ 1/4 REBAR @ 64" O.C.
6	GROUT SOLID w/ 1/4 REBAR @ 24" O.C.	NOT APPLICABLE	GROUT SOLID w/ 1/4 REBAR @ 24" O.C.	GROUT SOLID w/ 1/4 REBAR @ 64" O.C.
7 AND GREATER	ENGINEERED DESIGN BASED ON SITE CONDITIONS			

STRUCTURAL NOTES:

- WALL HEIGHT MEASURED FROM TOP OF FOOTING TO TOP OF THE WALL.
- THE MULTIPLE WYTHES TOGETHER WITH LADDER WIRE AT 16" O.C. VERTICALLY.
- CHART APPLICABLE FOR HOUSE FOUNDATION ONLY, CONSULT ENGINEER FOR DESIGN OF GARAGE FOUNDATION NOT COMMON TO HOUSE.
- BACKFILL OF CLEAN 1 1/2" x 1 1/2" WASHED STONE IS ALLOWABLE.
- BACKFILL OF WELL DRAINED OR SAND - GRAVEL MIXTURE SOILS (45 PERCENT BELOW GRADE) CLASSIFIED AS GROUP 1 ACCORDING TO UNIFIED SOILS CLASSIFICATION SYSTEM IN ACCORDANCE WITH TABLE 4.02C OF THE 2018 INTERNATIONAL RESIDENTIAL CODE ARE ALLOWABLE.
- PREP SLAB PER 1909.2.1 AND 1909.2.2 BASE OF THE 2018 INTERNATIONAL RESIDENTIAL CODE. MINIMUM 24" LAP SPlice LENGTH.
- LOCATE REBAR IN CENTER OF FOUNDATION WALL.
- WHERE REQUIRED, FILL BLOCK SOLID WITH TYPE 15' MORTAR OR 3000 PSI GROUT. USE OF "LOW LIFT GROUTING" METHOD REQUIRED WHEN FILLING WALLS WITH GROUT AT HEIGHTS OF 5' AND GREATER.

ANCHOR SPACING AND EMBEDMENT

WIND ZONE	120 MPH		130 MPH	
	SPACING	EMBEDMENT	SPACING	EMBEDMENT
SPACING	6'-0" O.C.	1'	4'-0" O.C.	15" INTO MASONRY 1" INTO CONCRETE
EMBEDMENT	1'	15" INTO MASONRY 1" INTO CONCRETE	4'-0" O.C.	15" INTO MASONRY 1" INTO CONCRETE

**J.S. THOMPSON ENGINEERING INC.**  
 606 WADE AVE. SUITE 100 RALEIGH, NC 27665  
 PHONE: (919) 789-9919 FAX: (919) 789-9921  
 N.C. LICENSE NO: C1173

120 MPH - 130 MPH ULTIMATE DESIGN WIND SPEED  
 FOUNDATION DETAILS

DATE: NOVEMBER 14, 2018  
 SCALE: NTS  
 DRAWN BY: JST  
 ENGINEERED BY: JES

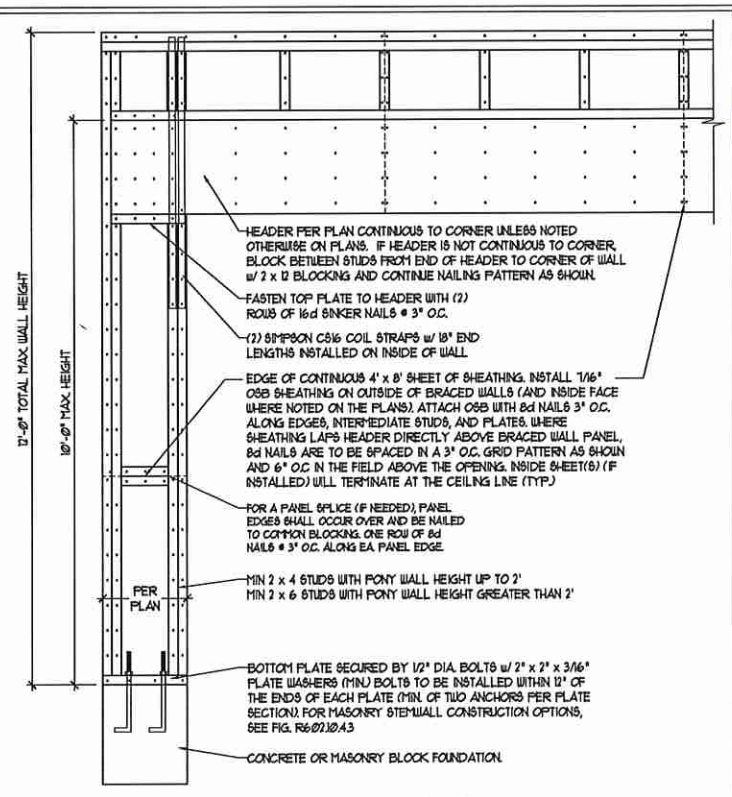


D-1  
 FOUNDATION DETAILS

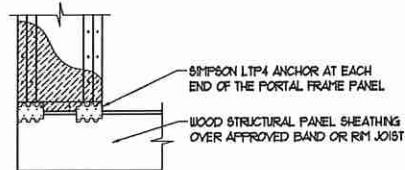
11/2/2020

**GENERAL WALL BRACING NOTES:**

1. WALL BRACING DESIGNED IN ACCORDANCE WITH CHAPTER 6 OF THE 2018 NC RESIDENTIAL BUILDING CODE (NRC). TABLES AND FIGURES REFERENCED ARE FROM THE 2018 NRC.
2. SEE THIS SHEET FOR GENERAL DETAILS. REFER TO THE 2018 NRC FOR ADDITIONAL INFORMATION AS NEEDED.
3. SEE STRUCTURAL SHEETS FOR BRACED WALL LOCATIONS, DIMENSIONS, HOLD DOWN TYPE AND LOCATIONS, BRACED WALL LINE KEY WITH WALL DESIGN SUMMARY OF REQUIRED/PROVIDED TOTALS FOR EACH WALL LINE AND ANY SPECIAL NOTES OR REQUIREMENTS.
4. ALL EXTERIOR WALLS ARE TO BE SHEATHED WITH CS-USP IN ACCORDANCE WITH SECTION R602.10.3 UNLESS NOTED OTHERWISE.
5. ALL EXTERIOR AND INTERIOR WALLS TO HAVE 1/2" GYPSUM INSTALLED. WHEN NOT USING METHOD 'GB', GYPSUM TO BE FASTENED PER TABLE R602.3.5. METHOD GB TO BE FASTENED PER TABLE R602.10.1.
6. CS-USP REFERS TO THE 'CONTINUOUS SHEATHING - WOOD STRUCTURAL PANELS' WALL BRACING METHOD. 1/4" OSB SHEATHING IS TO BE INSTALLED ON ALL EXTERIOR WALLS ATTACHED W/ 6d COMMON NAILS OR 8d (2 1/2" LONG x 0.13" DIAMETER) NAILS SPACED 6" O.C. ALONG PANEL EDGES AND 12" O.C. IN THE FIELD (UNO).
7. GB REFERS TO THE 'GYPSUM BOARD' WALL BRACING METHOD. 1/2" (MIN) GYPSUM WALL BOARD IS TO BE INSTALLED ON BOTH SIDES OF THE BRACED WALL FASTENED WITH 1 1/4" SCREWS OR 1 5/8" NAILS SPACED 7" O.C. ALONG PANEL EDGES INCLUDING TOP AND BOTTOM PLATES AND INTERMEDIATE SUPPORTS (UNO). VERIFY ALL FASTENER OPTIONS FOR 1/2" AND 5/8" GYPSUM PRIOR TO CONSTRUCTION. FOR INTERIOR FASTENER OPTIONS SEE TABLE R102.3.5. FOR EXTERIOR FASTENER OPTIONS SEE TABLE R602.3(1). EXTERIOR GB TO BE INSTALLED VERTICALLY.
8. REQUIRED BRACED WALL LENGTH FOR EACH SIDE OF THE CIRCUMSCRIBED RECTANGLE ARE INTERPOLATED PER TABLE R602.10.3. METHOD CS-USP CONTRIBUTES ITS ACTUAL LENGTH, METHOD GB CONTRIBUTES 5 ITS ACTUAL LENGTH AND METHOD FF CONTRIBUTES 15 TIMES ITS ACTUAL LENGTH.

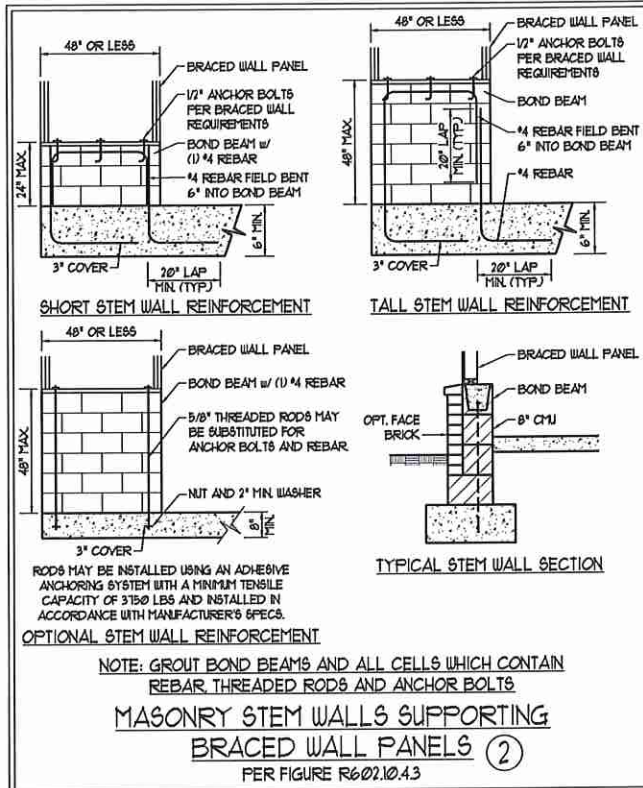


OVER CONCRETE OR MASONRY BLOCK FOUNDATION



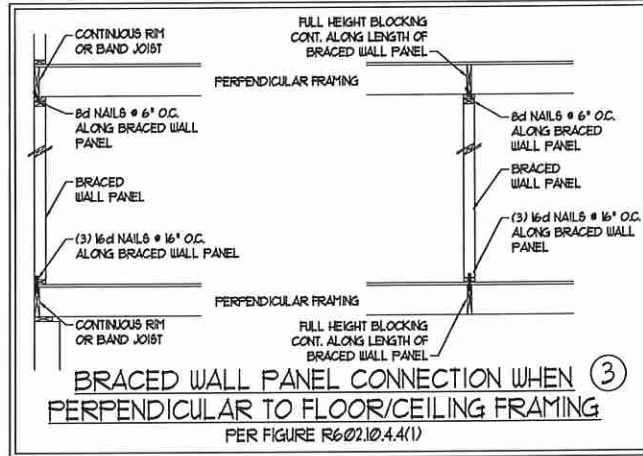
OVER RAISED WOOD FLOOR - FRAMING ANCHOR OPTION  
 \* APPLICABLE W/ GREATER THAN 12" KNEE WALL HEIGHTS IN CRAWL SPACE AND ABOVE FRAMED BASEMENT WALLS \*

METHOD FF-PORTAL FRAME DETAIL ①

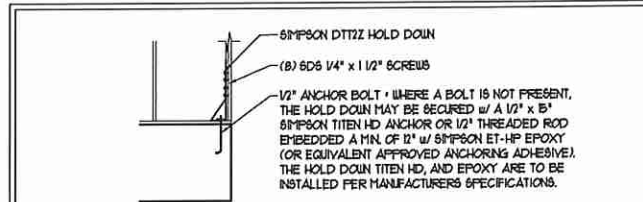


NOTE: GROUT BOND BEAMS AND ALL CELLS WHICH CONTAIN REBAR THREADED RODS AND ANCHOR BOLTS

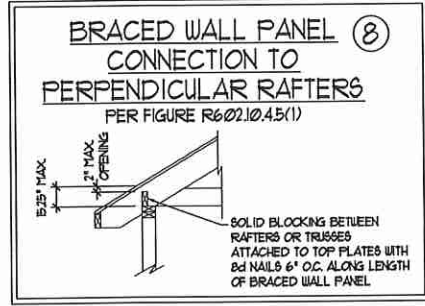
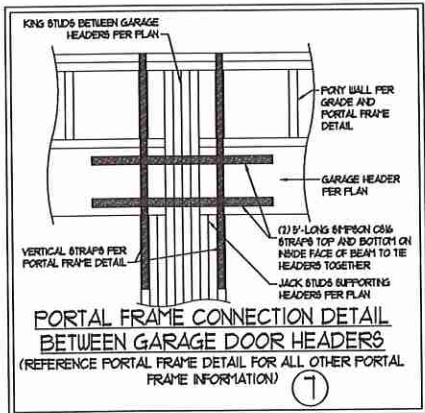
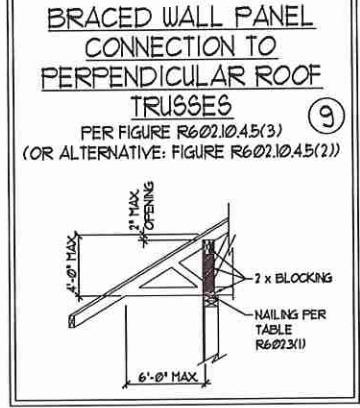
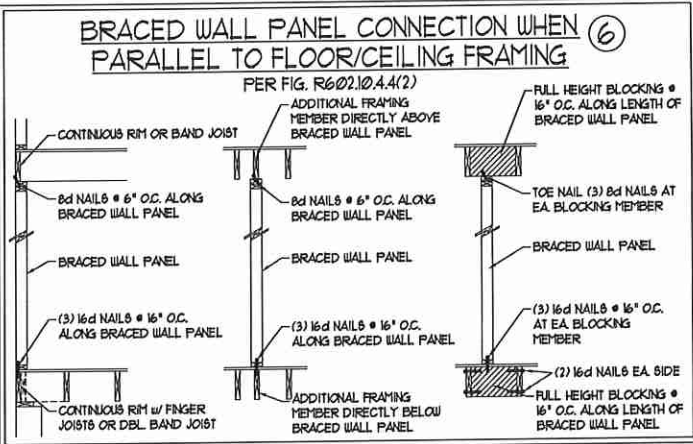
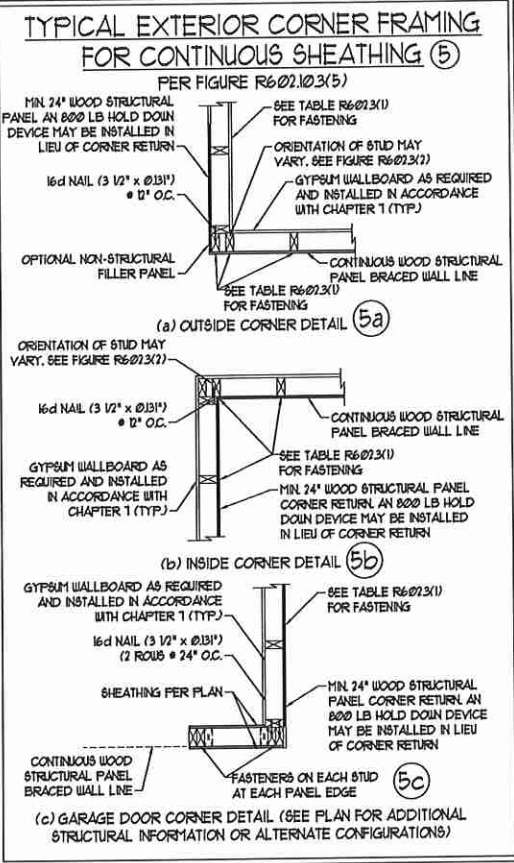
MASONRY STEM WALLS SUPPORTING BRACED WALL PANELS ②  
 PER FIGURE R602.10.4.3



BRACED WALL PANEL CONNECTION WHEN PERPENDICULAR TO FLOOR/CEILING FRAMING  
 PER FIGURE R602.10.4.4(1)



HOLD DOWN DETAIL FOR MASONRY FOUNDATION OR MONOLITHIC SLAB ④  
 \* APPLICABLE ONLY WHERE SPECIFIED ON PLAN \*



This sealed page is to be used in conjunction with a full plan set engineered by J.S. Thompson Engineering, Inc. only. Use of this individual sealed page within architectural pages or shop drawings by others is a punishable offense under N.C. Statute § 89C-23



**J.S. THOMPSON ENGINEERING, INC.**  
 606 WADE AVE., SUITE 104 RALEIGH, NC 27603  
 PHONE (919) 789-9919 FAX (919) 789-9921  
 N.C. LICENSE NO. C1713

120 MPH - 130 MPH ULTIMATE DESIGN WIND SPEED  
 WALL BRACING NOTES AND DETAILS

DATE: NOVEMBER 14, 2018  
 SCALE: 1/4" = 1'-0"  
 DRAWN BY: JST  
 ENGINEERED BY: JST

D-2  
 BRACED WALL NOTES AND DETAILS AND PF DETAIL

**GENERAL NOTES**

- ENGINEER'S SEAL APPLIES ONLY TO STRUCTURAL COMPONENTS INCLUDING ROOF RAFTERS, HIPs, VALLEYS, RIDGES, FLOORS, WALLS, BEAMS, HEADERS, COLUMNS, CANTILEVERS, OFFSET LOAD BEARING WALLS, PIERS, GIRDER SYSTEM AND FOOTINGS. ENGINEER'S SEAL DOES NOT CERTIFY DIMENSIONAL ACCURACY OF ARCHITECTURAL LAYOUT INCLUDING ROOF. ENGINEER'S SEAL DOES NOT APPLY TO I-JOIST OR FLOOR/ROOF TRUSS LAYOUT DESIGN AND ACCURACY.
- ALL CONSTRUCTION SHALL CONFORM TO THE LATEST REQUIREMENTS OF THE NORTH CAROLINA RESIDENTIAL CODE (NRC), 2018 EDITION, PLUS ALL LOCAL CODES AND REGULATIONS. THE STRUCTURAL ENGINEER IS NOT RESPONSIBLE FOR, AND WILL NOT HAVE CONTROL OF, CONSTRUCTION MEANS, METHODS, TECHNIQUES, SEQUENCES OR PROCEDURES, OR SAFETY PRECAUTIONS AND PROGRAMS IN CONNECTION WITH THE CONSTRUCTION WORK. NOR WILL THE ENGINEER BE RESPONSIBLE FOR THE CONTRACTOR'S FAILURE TO CARRY OUT THE CONSTRUCTION WORK IN ACCORDANCE WITH THE CONTRACT DOCUMENTS.
- STRUCTURAL DESIGN BASED ON THE PROVISIONS OF THE NRC, 2018 EDITION (R301.4 - R301.7)

DESIGN CRITERIA:	LIVE LOAD (PSF)	DEAD LOAD (PSF)	DEFLECTION (IN)
ATTIC WITH LIMITED STORAGE	20	10	L/240 (L/360 w/ BRITTLE FINISHES)
ATTIC WITHOUT STORAGE	10	10	L/360
DECKS	40	10	L/360
EXTERIOR BALCONIES	40	10	L/360
FIRE ESCAPES	40	10	L/360
HANDRAILS/GUARDRAILS	200 LB OR 50 (PLF)	10	L/360
PASSENGER VEHICLE GARAGE	50	10	L/360
ROOMS OTHER THAN SLEEPING ROOM	40	10	L/360
SLEEPING ROOMS	30	10	L/360
STAIRS	40	10	L/360
WIND LOAD	(BASED ON TABLE R301.2(4) WIND ZONE AND EXPOSURE)		
GROUND SNOW LOAD: P <sub>g</sub>	20 (PSF)		

- I-JOIST SYSTEMS DESIGNED WITH 12 PSF DEAD LOAD AND DEFLECTION (IN) OF L/480
  - FLOOR TRUSS SYSTEMS DESIGNED WITH 15 PSF DEAD LOAD
- FOR 15 AND 20 MPH WIND ZONES, FOUNDATION ANCHORAGE IS TO COMPLY WITH SECTION R403.16 OF THE NRC, 2018 EDITION. FOR 30 MPH, 40 MPH, AND 50 MPH WIND ZONES, FOUNDATION ANCHORAGE IS TO COMPLY WITH SECTION 450.4 OF THE NRC, 2018 EDITION.
  - ENERGY EFFICIENCY COMPLIANCE AND INSULATION VALUES OF THE BUILDING TO BE IN ACCORDANCE WITH CHAPTER 11 OF THE NRC, 2018 EDITION.

**FOOTING AND FOUNDATION NOTES**

- FOUNDATION DESIGN BASED ON A MINIMUM ALLOWABLE BEARING CAPACITY OF 2000 PSF. CONTACT GEOTECHNICAL ENGINEER IF BEARING CAPACITY IS NOT ACHIEVED.
- FOR ALL CONCRETE SLABS AND FOOTINGS, THE AREA WITHIN THE PERIMETER OF THE BUILDING ENVELOPE SHALL HAVE ALL VEGETATION, TOP SOIL, AND FOREIGN MATERIAL REMOVED. FILL MATERIAL SHALL BE FREE OF VEGETATION AND FOREIGN MATERIAL. THE FILL SHALL BE COMPACTED TO ASSURE UNIFORM SUPPORT OF THE SLAB, AND EXCEPT WHERE APPROVED, THE FILL DEPTHS SHALL NOT EXCEED 24" FOR CLEAN SAND OR GRAVEL. A 4" THICK BASED COURSE CONSISTING OF CLEAN GRADED SAND OR GRAVEL SHALL BE PLACED. A BASE COURSE IS NOT REQUIRED WHERE A CONCRETE SLAB IS INSTALLED ON WELL-DRAINED OR SAND-GRAVEL MIXTURE SOILS CLASSIFIED AS GROUP 1, ACCORDING TO THE UNITED SOIL CLASSIFICATION SYSTEM IN ACCORDANCE WITH TABLE R409.1 OF THE NRC, 2018 EDITION.
- PROPERLY DEWATER EXCAVATION PRIOR TO POURING CONCRETE WHEN BOTTOM OF CONCRETE SLAB IS AT OR BELOW WATER TABLE. IF APPLICABLE, 3/4" - 1" DEEP CONTROL JOINTS ARE TO BE SEALED WITHIN 4 TO 12 HOURS OF CONCRETE FINISHING AND WALL LOCATIONS HAVE BEEN MARKED. ADJUST WHERE NECESSARY.
- CONCRETE SHALL CONFORM TO SECTION R401.2 OF THE NRC, 2018 EDITION. CONCRETE REINFORCING STEEL TO BE ASTM A615 GRADE 60. WELDED WIRE FABRIC TO BE ASTM A99. MAINTAIN A MINIMUM CONCRETE COVER AROUND REINFORCING STEEL OF 3" IN FOOTINGS AND 1 1/2" IN SLABS. FOR POURED CONCRETE WALLS, CONCRETE COVER FOR REINFORCING STEEL MEASURED FROM THE INSIDE FACE OF THE WALL SHALL NOT BE LESS THAN 3/4". CONCRETE COVER FOR REINFORCING STEEL MEASURED FROM THE OUTSIDE FACE OF THE WALL SHALL NOT BE LESS THAN 1 1/2" FOR 5 BARS OR SMALLER, AND NOT LESS THAN 2" FOR 6 BARS OR LARGER.
- MASONRY UNITS TO CONFORM TO ACE 530/ASCE 5/115 402. MORTAR SHALL CONFORM TO ASTM C270.
- THE UNSUPPORTED HEIGHT OF MASONRY PIERS SHALL NOT EXCEED FOUR TIMES THEIR LEAST DIMENSION FOR UNFILLED HOLLOW CONCRETE MASONRY UNITS AND TEN TIMES THEIR LEAST DIMENSION FOR SOLID OR SOLID FILLED PIERS. PIERS MAY BE FILLED SOLID WITH CONCRETE OR TYPE M OR S MORTAR. PIERS AND WALLS SHALL BE CAPPED WITH 8" OF SOLID MASONRY.
- THE CENTER OF EACH OF THE PIERS SHALL BEAR IN THE MIDDLE THIRD OF ITS RESPECTIVE FOOTING. EACH GIRDER SHALL BEAR IN THE MIDDLE THIRD OF THE PIERS.
- ALL CONCRETE AND MASONRY FOUNDATION WALLS ARE TO BE CONSTRUCTED IN ACCORDANCE WITH THE PROVISIONS OF SECTION R404 OF THE NRC, 2018 EDITION OR IN ACCORDANCE WITH ACI 318, ACI 332, NCSA TR-8-A OR ACE 530/ASCE 5/115 402. MASONRY FOUNDATION WALLS ARE TO BE REINFORCED PER TABLE R404.1(1), R404.1(2), R404.1(3), OR R404.1(4) OF THE NRC, 2018 EDITION. CONCRETE FOUNDATION WALLS ARE TO BE REINFORCED PER TABLE R404.1(5) OF THE NRC, 2018 EDITION. STEP CONCRETE FOUNDATION WALLS TO 2 x 6 FRAMED WALLS AT 16" O.C. WHERE GRADE PERMITS (UNO).

This sealed page is to be used in conjunction with a full plan set engineered by J.S. Thompson Engineering, Inc. only. Use of this individual sealed page within architectural pages or shop drawings by others is a punishable offense under N.C. Statute § 89C-23

**FRAMING NOTES**

- ALL FRAMING LUMBER SHALL BE 2" 5PF MINIMUM (Fb = 875 PSF, Fv = 375 PSF, E = 1600000 PSF) UNLESS NOTED OTHERWISE (UNO). ALL TREATED LUMBER SHALL BE 2" 5PF MINIMUM (Fb = 975 PSF, Fv = 475 PSF, E = 1600000 PSF) UNLESS NOTED OTHERWISE (UNO).
- LAMINATED VENEER LUMBER (LVL) SHALL HAVE THE FOLLOWING MINIMUM PROPERTIES: Fb = 2600 PSF, Fv = 285 PSF, E = 1900000 PSF. LAMINATED STRAND LUMBER (LSL) SHALL HAVE THE FOLLOWING MINIMUM PROPERTIES: Fb = 2375 PSF, Fv = 310 PSF, E = 1900000 PSF. PARALLEL STRAND LUMBER (PSL) UP TO 1" DEPTH SHALL HAVE THE FOLLOWING MINIMUM PROPERTIES: Fc = 2500 PSF, E = 1600000 PSF. PARALLEL STRAND LUMBER (PSL) MORE THAN 1" DEPTH SHALL HAVE THE FOLLOWING MINIMUM PROPERTIES: Fc = 2900 PSF, E = 2000000 PSF. INSTALL ALL CONNECTIONS PER MANUFACTURER'S SPECIFICATIONS.
- STRUCTURAL STEEL SHALL CONFORM TO THE FOLLOWING ASTM SPECIFICATIONS:
 

A. W AND WT SHAPES:	ASTM A992
B. CHANNELS AND ANGLES:	ASTM A36
C. PLATES AND BARS:	ASTM A36
D. HOLLOW STRUCTURAL SECTIONS:	ASTM A500 GRADE B
E. STEEL PIPE:	ASTM A53, GRADE B, TYPE E OR S

- STEEL BEAMS SHALL BE SUPPORTED AT EACH END WITH A MINIMUM BEARING LENGTH OF 3 1/2" AND FULL FLANGE WIDTH (UNO). PROVIDE SOLID BEARING FROM BEAM SUPPORT TO FOUNDATION. BEAMS SHALL BE ATTACHED AT THE BOTTOM FLANGE TO EACH SUPPORT AS FOLLOWS (UNO):
 

A. WOOD FRAMING	(2) 1/2" DIA. x 4" LONG LAG SCREWS
B. CONCRETE	(2) 1/2" DIA. x 4" WEDGE ANCHORS
C. MASONRY (FULLY GROUTED)	(2) 1/2" DIA. x 4" LONG SIMPSON TITEN HD ANCHORS

LATERAL SUPPORT IS CONSIDERED ADEQUATE PROVIDING THE JOISTS ARE TOE NAILED TO THE 2x NAILER ON TOP OF THE STEEL BEAM, AND THE 2x NAILER IS SECURED TO THE TOP OF THE STEEL BEAM w/ (2) ROWS OF SELF TAPPING SCREWS @ 16" O.C. OR (2) ROWS OF 1/2" DIAMETER BOLTS @ 16" O.C. IF 1/2" BOLTS ARE USED TO FASTEN THE NAILER, THE STEEL BEAM SHALL BE FABRICATED w/ (2) ROWS OF 3/16" DIAMETER HOLES @ 16" O.C.

- SQUARES DENOTE POINT LOADS WHICH REQUIRE SOLID BLOCKING TO GIRDER OR FOUNDATION. SHADED SQUARES DENOTE POINT LOADS FROM ABOVE WHICH REQUIRE SOLID BLOCKING TO SUPPORTING MEMBER BELOW.
- ALL LOAD BEARING HEADERS TO CONFORM TO TABLE R602.1(1) AND R602.1(2) OF THE NRC, 2018 EDITION OR BE (2) 2 x 6 WITH (1) JACK AND (1) KING STUD EACH END (UNO), WHICHEVER IS GREATER. ALL HEADERS TO BE SECURED TO EACH JACK STUD WITH (4) 8d NAILS. ALL BEAMS TO BE SUPPORTED WITH (2) STUDS AT EACH BEARING POINT (UNO). INSTALL KING STUDS PER SECTION R602.15 OF THE NORTH CAROLINA RESIDENTIAL CODE, 2018 EDITION.
- ALL BEAMS, HEADERS, OR GIRDER TRUSSES PARALLEL TO WALL ARE TO BEAR FULLY ON (1) JACK OR (2) STUDS MINIMUM OR THE NUMBER OF JACKS OR STUDS NOTED. ALL BEAMS OR GIRDER TRUSSES PERPENDICULAR TO WALL AND SUPPORTED BY (3) STUDS OR LESS ARE TO HAVE 1 1/2" MINIMUM BEARING (UNO). ALL BEAMS OR GIRDER TRUSSES PERPENDICULAR TO WALL AND SUPPORTED BY MORE THAN (3) STUDS OR OTHER NOTED COLUMN ARE TO BEAR FULLY ON SUPPORT COLUMN FOR ENTIRE WALL DEPTH (UNO). BEAM ENDS THAT BUTT INTO ONE ANOTHER ARE TO EACH BEAR EQUAL LENGTHS (UNO).
- FLITCH BEAMS SHALL BE BOLTED TOGETHER USING 1/2" DIAMETER BOLTS (ASTM A307) WITH WASHERS PLACED AT THREADED END OF BOLT. BOLTS SHALL BE SPACED AT 24" CENTERS (MAXIMUM), AND STAGGERED AT TOP AND BOTTOM OF BEAM (2" EDGE DISTANCE), WITH (2) BOLTS LOCATED AT 6" FROM EACH END (UNO).
- ALL I-JOIST OR TRUSS LAYOUTS ARE TO BE IN COMPLIANCE WITH THE OVERALL DESIGN SPECIFIED ON THE PLANS. ALL DEVIATIONS ARE TO BE BROUGHT TO THE ATTENTION OF THE ENGINEER OF RECORD PRIOR TO INSTALLATION.
- BRACED WALL PANELS SHALL BE CONSTRUCTED ACCORDING TO THE NORTH CAROLINA RESIDENTIAL CODE 2018 EDITION WALL BRACING CRITERIA. THE AMOUNT, LENGTH, AND LOCATION OF BRACING SHALL COMPLY WITH ALL APPLICABLE TABLES IN SECTION R602.10.
- PROVIDE DOUBLE JOIST UNDER ALL WALLS PARALLEL TO FLOOR JOISTS. PROVIDE SUPPORT UNDER ALL WALLS PARALLEL TO FLOOR TRUSSES OR I-JOISTS PER MANUFACTURER'S SPECIFICATIONS. INSTALL BLOCKING BETWEEN JOISTS OR TRUSSES FOR POINT LOAD SUPPORT FOR ALL POINT LOADS ALONG OFFSET LOAD LINES.
- FOR ALL HEADERS SUPPORTING BRICK VENEER THAT ARE LESS THAN 8'-0" IN LENGTH, REST A 6" x 4" x 5/16" STEEL ANGLE WITH 6" MINIMUM EMBEDMENT AT SIDES FOR BRICK SUPPORT (UNO). FOR ALL HEADERS 8'-0" AND GREATER IN LENGTH, BOLT A 6" x 4" x 5/16" STEEL ANGLE TO HEADER WITH 1/2" LAG SCREWS AT 12" O.C. STAGGERED FOR BRICK SUPPORT. FOR ALL BRICK SUPPORT AT ROOF LINES, BOLT A 6" x 4" x 5/16" STEEL ANGLE TO (2) 2 x 10 BLOCKING INSTALLED w/ (4) 8d NAILS EA. PLY BETWEEN WALL STUDS WITH (2) ROWS OF 1/2" LAG SCREWS AT 12" O.C. STAGGERED AND IN ACCORDANCE WITH SECTION R103.8(2) OF THE NRC, 2018 EDITION.
- FOR STICK FRAMED ROOFS, CIRCLES DENOTE (3) 2 x 4 POSTS FOR ROOF MEMBER SUPPORT. HIP SPLICES ARE TO BE SPACED A MINIMUM OF 8'-0". FASTEN MEMBERS WITH THREE ROWS OF 10d NAILS AT 16" O.C. FRAME DORMER WALLS ON TOP OF DOUBLE OR TRIPLE RAFTERS AS SHOWN (UNO).
- FOR TRUSSED ROOFS, FRAME DORMER WALLS ON TOP OF 2 x 4 LADDER FRAMING AT 24" O.C. BETWEEN ADJACENT ROOF TRUSSES. STICK FRAME OVER-FRAMED ROOF SECTIONS WITH 2 x 8 RIDGES, 2 x 6 RAFTERS AT 16" O.C. AND FLAT 2 x 10 VALLEYS (UNO).
- ALL 4 x 4 AND 6 x 6 POSTS TO BE INSTALLED WITH 100 LB CAPACITY UPLIFT CONNECTORS TOP AND BOTTOM (UNO). POSTS MAY BE SECURED USING ONE SIMPSON H6 OR L160 UPLIFT CONNECTOR FASTENED TO THE BAND AT THE BOTTOM AND THE BEAM AT THE TOP OF EACH POST. ONE 1/2" SECTION OF SIMPSON CS16 COIL STRAPPING WITH (6) 8d HDG NAILS AT EACH END MAY BE USED IN LIEU OF EACH TWIST STRAP IF DESIRED. FOR MASONRY OR CONCRETE FOUNDATION USE SIMPSON POST BASE.

**J.S. THOMPSON ENGINEERING, INC.**  
 606 WADE AVE., SUITE 104, RALEIGH, NC 27605  
 PHONE: (919) 789-9919 FAX: (919) 789-9921  
 N.C. LICENSE NO.: C11733

120 MPH - 130 MPH ULTIMATE DESIGN WIND SPEED  
 STANDARD STRUCTURAL NOTES

DATE: NOVEMBER 14, 2018
SCALE: 1/4" = 1'-0"
DRAWN BY: JES
ENGINEERED BY: JST



S-O  
 STRUCTURAL  
 NOTES