

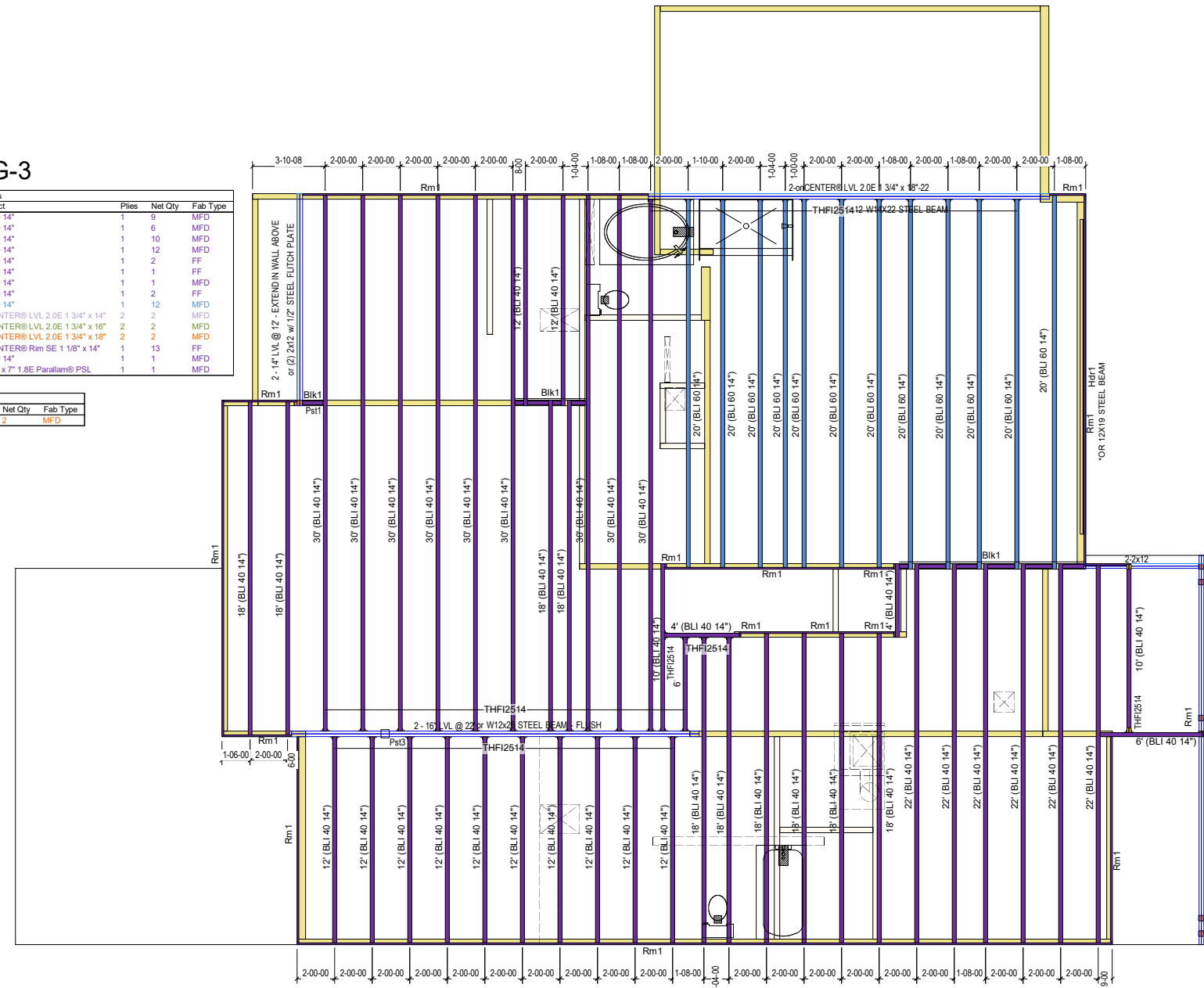
**RESIDENTIAL STRUCTURES, P.C.**  
3410 N. Davidson St.  
Charlotte, N.C. 28205  
Seal For Structural Only

2913 'The Riley'  
**SECOND FLOOR WAG-3**

ProdID	Length	Product	Piles	Net Qty	Fab Type
30'	30-00-00	BLI 40 14"	1	9	MFD
22'	22-00-00	BLI 40 14"	1	6	MFD
18'	18-00-00	BLI 40 14"	1	10	MFD
12'	12-00-00	BLI 40 14"	1	12	MFD
10'	10-00-00	BLI 40 14"	1	2	FF
6'	6-00-00	BLI 40 14"	1	1	FF
4'	4-00-00	BLI 40 14"	1	1	MFD
20'	20-00-00	BLI 60 14"	1	12	MFD
2-1/4" LVL @ 12" - EXTEND IN WALL ABOVE	12-00-00	onCENTER® LVL 2.0E 1 3/4" x 14"	2	2	MFD
2-16" LVL @ 22"	22-00-00	onCENTER® LVL 2.0E 1 3/4" x 18"	2	2	MFD
2-onCENTER® LVL 2.0E 1 3/4" x 18"-22	22-00-00	onCENTER® LVL 2.0E 1 3/4" x 18"	2	2	MFD
Rm1	12-00-00	onCENTER® Rim SE 1 1/8" x 14"	1	13	FF
Blk1	12-00-00	BLI 40 14"	1	1	MFD
Ps11	12-00-00	3 1/2" x 7" 1.8E Parallam® PSL	1	1	MFD

ProdID	Length	Product	Piles	Net Qty	Fab Type
Hst1	18-00-00	onCENTER® LVL 2.0E 1 3/4" x 18"	2	2	MFD

Qty	Manuf	Product	Flange	Skew	Slope
40	THFI2514	None	-	-	-



**SHOP DRAWING REVIEW**  
REVIEW IS FOR GENERAL COMPLIANCE WITH  
CONTRACT DOCUMENTS AND STRUCTURAL PLANS.  
SOLE RESPONSIBILITY FOR CORRECTNESS OF  
DIMENSIONS, DETAILS, AND QUANTITIES SHALL  
REMAIN WITH THE CONTRACTOR.

**NOTES:**

1. For all layouts based on plans that have been sealed by an engineer:  
This is a placement plan only. This layout is to be used in congruence with the plans sealed by the engineer of record. TBC is not responsible for the design of the floor system indicated. Please see the engineer's plans for all structural information, bolts/screw/nail pattern, connections, hardware, loading information, etc..

2. For all layouts based on plans not sealed by an engineer:  
This design is intended to meet NCBC based on the design loadings indicated or not indicated, based on the minimum required loadings per code. All EWP designs are to be reviewed and approved by a structural engineer of record or the general contractor of record prior to installation. It is recommended that all designs are to be reviewed and stamped by a local engineer prior to shipment. Please refer to the Blulinx Installation Guide for all connections, Solid blocking, web filling information, etc. All concentrated loads bearing through the roof and floor systems must be solid blocked in order to avoid any crushing of EWP material.

3. **General Installation Notes:**  
I-Joists require 1 3/4" minimum bearing and should be nailed to the bearing plate with one sinker nail on each side.  
I-Joist Rim and onCenter Rimboard could be nailed to the bearing plate with 8d nails @ 6" OC.  
Side Loaded Double I-Joists shall be packed solid and connected with 2 rows of 10d nails @ 12" OC.

**The Building Center**  
Engineered Wood Division

**2nd Floor Placement Plan**

Plan: **21-783**  
2913 'The Riley'

**True Homes**

Job: **Walker Grove Lot #3**

Date: 6/18/2021 Scale: 1/8"=1'-0"

Designed By: BG

Checked By: RR Revised By:

Sheet: **1 of 1**