

RESIDENTIAL STRUCTURES, P.C.
3410 N. Davidson St.
Charlotte, N.C. 28209
Seal For Structural Only

NOTES:

1. For all layouts based on plans that have been sealed by an engineer:

This is a placement plan only. This layout is to be used in congruence with the plans sealed by the engineer of record. TBC is not responsible for the design of the floor system indicated. Please see the engineer's plans for all structural information, bolts/screw/nail pattern, connections, hardware, loading information, etc..

2. For all layouts based on plans not sealed by an engineer:

This design is intended to meet NCBC based on the design loadings indicated or not indicated, based on the minimum required loadings per code. All EWP designs are to be reviewed and approved by a structural engineer of record or the general contractor of record prior to installation. It is recommended that all designs are to be reviewed and stamped by a local engineer prior to shipment. Please refer to the Blulinx Installation Guide for all connections, Solid blocking, web filling information, etc. All concentrated loads bearing through the roof and floor systems must be solid blocked in order to avoid any crushing of EWP material.

3. General Installation Notes:

I-Joists require 1 3/4" minimum bearing and should be nailed to the bearing plate with one sinker nail on each side.

I-Joist Rim and onCenter Rimboard could be nailed to the bearing plate with 8d nails @ 6" OC.

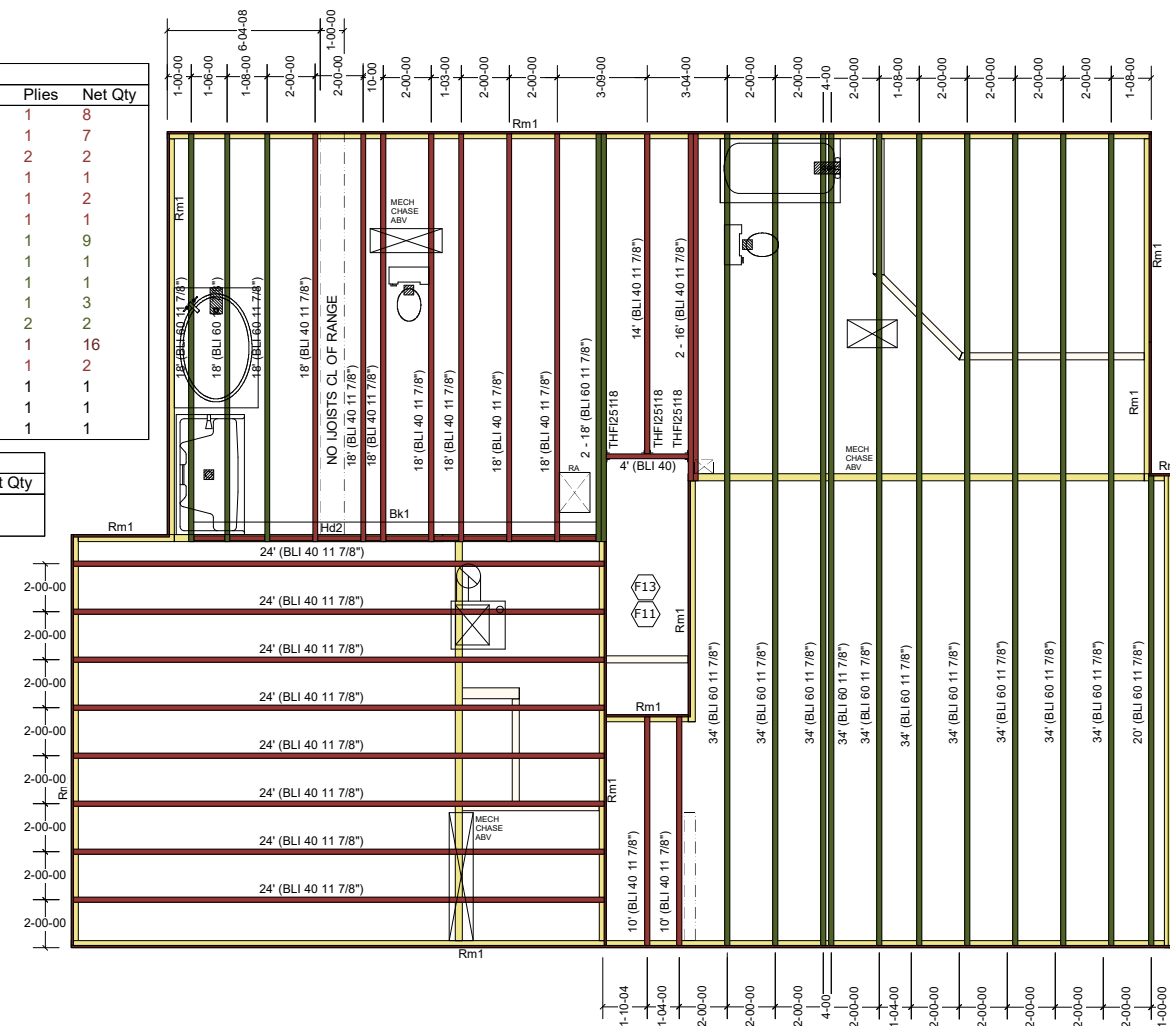
Side Loaded Double I-Joists shall be packed solid and connected with 2 rows of 10d nails @ 12" OC.

**THE LENOX
SECOND FLOOR WAG-17**

PlotID	Length	Product	Plies	Net Qty
24' (BLI 40 11 7/8")	24-00-00	BLI 40 11 7/8"	1	8
18' (BLI 40 11 7/8")	18-00-00	BLI 40 11 7/8"	1	7
2 - 16' (BLI 40 11 7/8")	16-00-00	BLI 40 11 7/8"	2	2
14' (BLI 40 11 7/8")	14-00-00	BLI 40 11 7/8"	1	1
10' (BLI 40 11 7/8")	10-00-00	BLI 40 11 7/8"	1	2
4' (BLI 40)	4-00-00	BLI 40 11 7/8"	1	1
34' (BLI 60 11 7/8")	34-00-00	BLI 60 11 7/8"	1	9
34' (BLI 60 11 7/8")	34-00-00	BLI 60 11 7/8"	1	1
20' (BLI 60 11 7/8")	20-00-00	BLI 60 11 7/8"	1	1
18' (BLI 60 11 7/8")	18-00-00	BLI 60 11 7/8"	1	3
2 - 18' (BLI 60 11 7/8")	18-00-00	BLI 60 11 7/8"	2	2
Rm1	12-00-00	onCENTER® Rim SE 1 1/8" x 11 7/8"	1	16
Bk1	12-00-00	BLI 40 11 7/8"	1	2
Sheathing for DBL*		5/8" 4x8 Square Edge OSB	1	1
2x8 for DBL Joist*	16-00-00	2x8 #2 SYP	1	1
2x8 for DBL Joist *	18-00-00	2x8 #2 SYP	1	1

PlotID	Length	Product	Plies	Net Qty
Hd2	12-00-00	onCENTER® LVL 2.0E 1 3/4" x 9 1/4"	2	2
Hd1	20-00-00	onCENTER® LVL 2.0E 1 3/4" x 11 7/8"	2	2

Connector Summary			
Qty	Manuf	Product	Flange
3	THFI25118	None	



SHOP DRAWING REVIEW
REVIEW IS FOR GENERAL COMPLIANCE WITH CONTRACT DOCUMENTS AND STRUCTURAL PLANS. SOLE RESPONSIBILITY FOR CORRECTNESS OF DIMENSIONS, DETAILS, AND QUANTITIES SHALL REMAIN WITH THE CONTRACTOR.

The Building Center
Engineered Wood Division

2nd Floor Placement Plan

Plan:	21-506 2475 'The Lenox'
Job:	True Homes Walker Grove Lot #17
Date:	4/20/2021
Scale:	1/8"=1'-0"
Designed By:	BG
Checked By:	RR
Revised By:	
Sheet:	1 of 1