

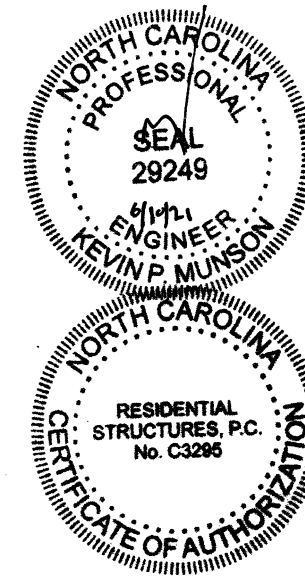
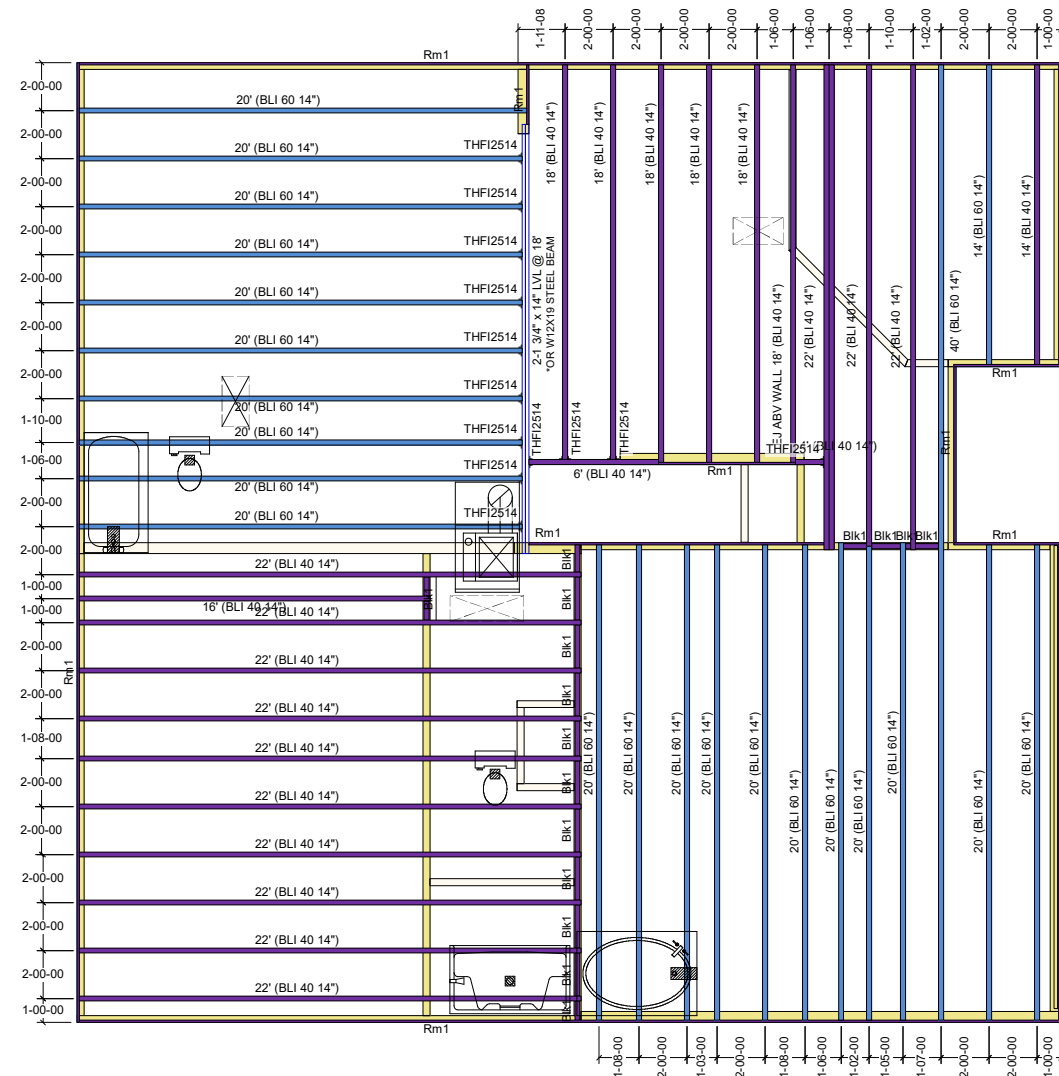
SHOP DRAWING REVIEW  
 REVIEW IS FOR GENERAL COMPLIANCE WITH  
 CONTRACT DOCUMENTS AND STRUCTURAL PLANS.  
 SOLE RESPONSIBILITY FOR CORRECTNESS OF  
 DIMENSIONS, DETAILS, AND QUANTITIES SHALL  
 REMAIN WITH THE CONTRACTOR.

THE KIPLING  
 Second Floor WAG-16

PlotID	Length	Products		
		Product	Plies	Net Qty
22' (BLI 40 14")	22-00-00	BLI 40 14"	1	12
22' (BLI 40 14")	22-00-00	BLI 40 14"	2	2
18' (BLI 40 14")	18-00-00	BLI 40 14"	1	5
EJ ABV WALL 18' (BLI 40 14")	18-00-00	BLI 40 14"	1	1
16' (BLI 40 14")	16-00-00	BLI 40 14"	1	1
14' (BLI 40 14")	14-00-00	BLI 40 14"	1	1
6' (BLI 40 14")	6-00-00	BLI 40 14"	1	1
4' (BLI 40 14")	4-00-00	BLI 40 14"	1	1
40' (BLI 60 14")	40-00-00	BLI 60 14"	1	1
20' (BLI 60 14")	20-00-00	BLI 60 14"	1	21
14' (BLI 60 14")	14-00-00	BLI 60 14"	1	1
2-1 3/4" x 14" LVL @ 18"	18-00-00	onCENTER® LVL 2.0E 1 3/4" x 14"	2	2
Rm1	12-00-00	onCENTER® Rim SE 1 1/8" x 14"	1	16
Bk1	24-00-00	BLI 40 14"	1	1

Wall Framing				
PlotID	Length	Product	Plies	Net Qty
Hdr1	20-00-00	onCENTER® LVL 2.0E 1 3/4" x 11 7/8"	2	2

Connector Summary			
Qty	Manuf	Product	Flange
13		THFI2514	None



**RESIDENTIAL STRUCTURES, P.C.**  
 3410 N. Davidson St.  
 Charlotte, N.C. 28205  
 Seal For Structural Only



The Building Center, Inc.  
 10201 Industrial Dr.  
 Pineville, NC 28134  
 704-889-8182

- NOTES:**
- For all layouts based on plans that have been sealed by an engineer:  
 This is a placement plan only. This layout is to be used in congruence with the plans sealed by the engineer of record. TBC is not responsible for the design of the floor system indicated. Please see the engineer's plans for all structural information, bolts/screw/nail pattern, connections, hardware, loading information, etc..
  - For all layouts based on plans not sealed by an engineer:  
 This design is intended to meet NCBC based on the design loadings indicated or not indicated, based on the minimum required loadings per code. All EWP designs are to be reviewed and approved by a structural engineer of record or the general contractor of record prior to installation. It is recommended that all designs are to be reviewed and stamped by a local engineer prior to shipment. Please refer to the Bluitix Installation Guide for all connections, Solid blocking, web filling information, etc. All concentrated loads bearing through the roof and floor systems must be solid blocked in order to avoid any crushing of EWP material.

- 3. General Installation Notes:**
- I-Joists require 1 3/4" minimum bearing and should be nailed to the bearing plate with one sinker nail on each side.
  - I-Joist Rim and onCenter Rimboard should be nailed to the bearing plate with 8d nails @ 6" OC.
  - Side Loaded Double I-Joists shall be packed solid and connected with 2 rows of 10d nails @ 12" OC.

**The Building Center**  
 Engineered Wood Division

**1st Floor Placement Plan**

Plan: **21-720**  
 2815 'The Kipling'

**True Homes**

Job: **Walkers Grove #16**

Date: 6/7/2021 Scale: 1/8"=1'-0"

Designed By: BG

Checked By: RR Revised By:

Sheet: **1 of 2**