

JACKSON



COVER SHEET

OKM 128 Bumper Marked Plan

H&H HOMES
JACKSON

DATE: FEBRUARY 27, 2019
REV. JANUARY 16, 2020
DRAWN BY: WG
ENGINEERED BY:
REVIEWED BY:

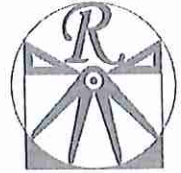
CS

JACKSON REVISION LIST - STRUCTURAL:

- 1.) ADDED FRAMING AND FOUNDATION FOR 3 CAR GARAGE AND 1-CAR WITH SIDE LOAD
- 2.) EXTENDED NOOK BEAM, ADDED FRAMING FOR SECOND FLOOR OPTIONS (ADDED EXTRA JOISTS AND SHIFTED BEAMS AT FOYER WHERE REQUIRED)
- 3.) ADDED FRAMING AND FOUNDATION FOR SMALLER MASTER SUITE
- 4.) ADDED JOIST SERIES/SPACING
- 5.) RECONFIGURED CRAWL TO HAVE ALL JOISTS RUNNING FRONT TO BACK
- 6.) REMOVED PARTIAL CRAWL FRAMING FROM BASEMENT AND EXTENDED BASEMENT FRAMING BELOW KITCHEN
- 7.) CHANGED TO 2 x 6 HEADERS WHERE APPLICABLE (5-18)
- 8.) FLOORED OPTION FOR BONUS ROOM AND REVISED HEADER FOR FLOOR LOADS (5-18)
- 9.) ADDED HEADERS FOR FIREPLACE OPTIONS (5-18)
10. REMOVED BEAM FOR OLD MEDIA ROOM LOCATION (5-18)
- 11.) 2 x 6 GARAGE WING WALLS (5-18)
- 12.) MODIFIED STRAPPING NOTE FOR DOUBLE GARAGE DOOR (5-18)
- 13.) UPDATED STRUCTURAL NOTES (5-18)
- 14.) REMOVED ROOF TRUSS BEARING AT REVISED SECOND FLOOR BATH LOCATION (5-18)
- 15.) CHANGED FRONT PORCH POSTS TO 6X6 FOR (3) PLY BEAM (2-19)
- 16.) ADDED MEDIA OPTION BACK - MOVED LVL ON SECOND FLOOR FRAMING, EXTRA JOIST, ATTIC FRAMING PLAN (2-19)
- 17.) CODE UPDATE TO 2018 NC IRC (2-19)
- 18.) CODE UPDATE TO 2018 SC IRC (1-16)
- 19.)
- 20.)
- 21.)
- 22.)
- 23.)
- 24.)
- 25.)
- 26.)
- 27.)
- 28.)
- 29.)
- 30.)

JACKSON REVISION LIST - ARCHITECTURAL:

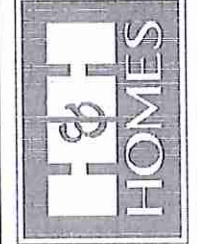
- 1.) BUMPED REAR KITCHEN WALL, BEDROOM #3/ STUDY NICHE WALL, AND REAR PORCH OUT 24" (ADDING S.F.).
- 2.) RECONFIGURED KITCHEN (REMOVED CABINETS FROM REAR WALL, ADDED WINDOW AND NEW ISLAND).
- 3.) COMBINED JACKSON-II (BASEMENT) AND REGULAR JACKSON INTO ONE DRAWING.
- 4.) ADDED OPTION FOR ONE-CAR GARAGE IN COMBINATION WITH SIDE-LOAD MAIN HOUSE GARAGE.
- 5.) ADDED OPTION FOR THREE-CAR GARAGE.
- 6.) ADDED STUDY OPTION WITH SMALLER MASTER SUITE (FIRST FLOOR).
- 7.) ADDED SECOND MASTER SUITE OPTION (SECOND FLOOR).
- 8.) MADE BEDROOM #5 STANDARD (LIKE ON OLD PRESIDENTIAL).
- 9.) MADE LOFT/ OPTIONAL MEDIA ROOM AN OPTION. (SECOND FLOOR).
10. REMOVED C.O. AND WALLS BETWEEN NOOK AND FAMILY ROOM.
- 11.) ADDED WALK-IN SHOWER OPTION (FIRST FLOOR).
- 12.) ADDED CLOSET SHELVING NOTES.
- 13.) ADDED EXTERIOR LIGHTS TO ELEVATIONS.
- 14.) ADDED STANDARD CAN LIGHTING TO LOFT/ OPT. MEDIA ROOM. (SECOND FLOOR)
- 15.) ADDED OPTIONAL CAN LIGHTING TO MASTER SUITE, FAMILY ROOM, AND HALLWAY UNDER BALCONY (FIRST FLOOR).
- 16.) ADDED OPTIONAL CAN LIGHTING TO SECOND MASTER SUITE (SECOND FLOOR).
- 17.) ADDED SHAKES TO FRONT GABLES ON ELEVATION A.
- 18.) ELIMINATED PARTIAL CRAL SPACE FROM BASEMENT OPTION. FULL BASEMENT NOW.
- 19.) ADDED OPTIONAL BATH (ROUGH-IN) TO OPTIONAL BASEMENT.
- 20.) EXTENDED FRONT PORCH BY 2" TO LINE 1" WITH CANTILEVER ABOVE. (11-17)
- 21.) ADDED MISSING DIMENSION TO MASTER TOILET ROOM (11-17)
- 22.) REVISED SECOND FLOOR SHARED BATH BY EXTENDING BEDROOM #3 W.I.C. AND PLACING VANITY ON OPPOSITE WALL, ELIMINATING DOOR FROM HALLWAY. (3-18)
- 23.) ADDED OPTION FOR DOOR TO SF SHARED BATH FROM HALLWAY (MADE BATH VANITY SMALLER). (3-18)
- 24.) ADDED OPTION FOR BONUS ROOM OVER FAMILY ROOM (FLOORED OVER). (3-18)
- 25.) ADDED OPTION FOR LOFT OVER FAMILY ROOM (FLOORED OVER). (3-18)
- 26.) MADE FIREPLACE OPTIONAL (THIRD FAMILY ROOM WINDOW NOW STANDARD.) (3-18)
- 27.) ADDED OPTION FOR FIREPLACE ON SECOND FLOOR IN OPT. BONUS ROOM/ LOFT (3-18)
- 28.) CREATED KITCHEN OPTION (SIMILAR TO OLD JACKSON PLAN). (3-18)
- 29.) REMOVED OLD LOFT/ MEDIA OPTION FROM PLAN. ORIGINALLY LOCATED IN FRONT OF BEDROOM #4 (3-18)
- 30.) ADDED OLD LOFT/ MEDIA OPTION BACK TO PLAN ONLY AS MEDIA ROOM OPTION (2-19)
- 31.) REMOVED ARCH OPENINGS AND REPLACED WITH C.O. (11-26-19)
- 32.) CHANGED FIREPLACES TO BE 32" FIREPLACE. (11-26-19)
- 33.) UPDATED AND VERIFY BATHROOM NAMING PER H&H STANDARDS. (11-26-19)
- 34.) UPDATED AND VERIFY SQUARE FOOTAGE. (11-26-19)
- 35.) ROOF VENTING CALCULATIONS FOR EACH ELEVATION LAYOUT. (11-26-19)
- 36.) UPDATED HDR HGT FROM 6'10" TO 7'-0". (11-26-19)
- 37.) REMOVED KITCHEN OPTION. (11-26-19)
- 38.) ADDED ROOF VENT CALCULATIONS. (11-26-19)
- 39.) VERIFIED GOURMET KITCHEN WAS ADDED. (1-16-20)
- 40.) CHANGED FIREPLACE FROM STANDARD TO OPTIONAL. (1-16-20)
- 41.) REMOVE GLASS INSERTS FROM GARAGE WINDOWS AND REMOVE METAL ACCESSORIES. (1-16-20)
- 42.) UPDATED CUTSHEETS. (1-16-20)



RENAISSANCE
RESIDENTIAL DESIGN, INC.
1010 GLENNIST CT., J. RALEIGH, NC 27612
919 449 4128
WWW.RENAISSANCEDESIGN.COM

The art of redefining your vision into reality.
RENAISSANCE RESIDENTIAL DESIGN, INC. EXPRESSLY RESERVES THE RIGHT TO MAKE MODIFICATIONS TO FLOOR PLANS, ELEVATIONS, MATERIALS, AND SPECIFICATIONS WITHOUT NOTICE. THESE DRAWINGS ARE FOR THE PURPOSE OF COORDINATING ARCHITECTURAL CONCEPT ONLY.
RENAISSANCE RESIDENTIAL DESIGN, INC. EXPRESSLY RESERVES THE RIGHT TO MAKE MODIFICATIONS TO FLOOR PLANS, ELEVATIONS, MATERIALS, AND SPECIFICATIONS WITHOUT NOTICE. THESE DRAWINGS ARE FOR THE PURPOSE OF COORDINATING ARCHITECTURAL CONCEPT ONLY.

J.S. THOMPSON
ENGINEERING, INC.
100 W. WALKER AVE., SUITE 101
RALEIGH, NC 27605
PHONE: (919) 789-9900
FAX: (919) 789-9251
N.C. LICENSE NO. C-1733



FINISH, PROPORTIONS, DIMENSIONS, FEATURES, MATERIALS, ELEVATIONS, AND SPECIFICATIONS ARE ESTIMATED AND MAY VARY IN ACTUAL CONSTRUCTION. THESE DRAWINGS ARE FOR THE PURPOSE OF COORDINATING ARCHITECTURAL CONCEPT ONLY. SEE SHEET A-2 FOR CURRENT DETAILS. COPYRIGHT © 2017 H&H HOMES

H&H HOMES, INC.
JACKSON

DATE: FEBRUARY 27, 2019
REV.: JANUARY 16, 2020
SCALE: AS NOTED
DRAWN BY: WJG
ENGINEERED BY: WLF
REVIEWED BY: JES

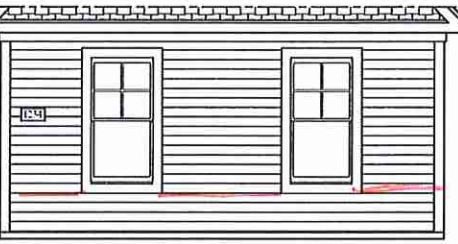
B - ELEVATIONS
A-2



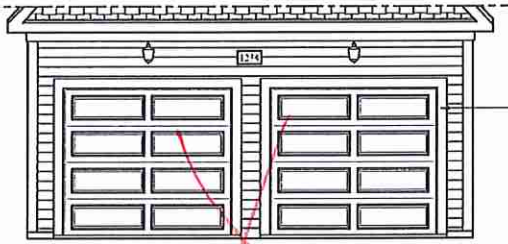
FRONT ELEVATION-B
SCALE: 1/4" = 1'-0"

No Sills

STONE

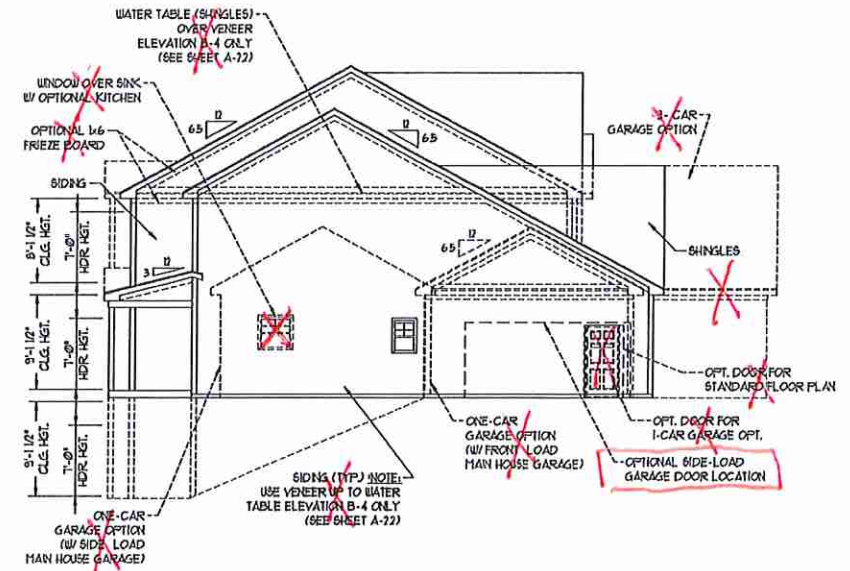


SIDE LOAD GARAGE OPTION
SCALE: 1/4" = 1'-0"

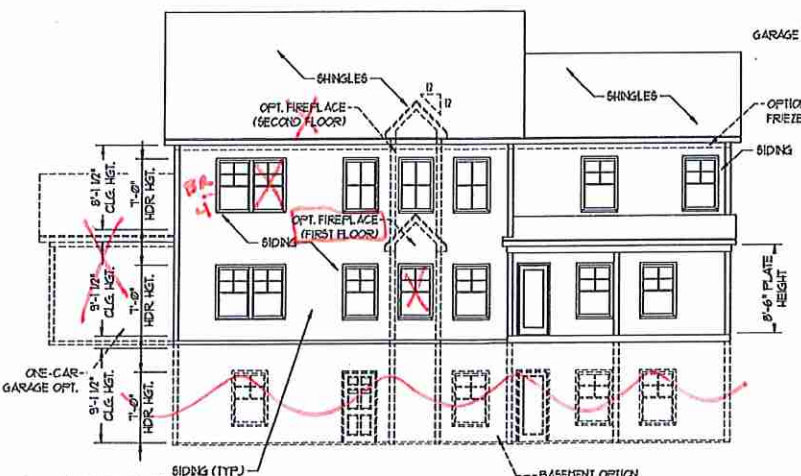


DOUBLE GARAGE DOOR OPTION
SCALE: 1/4" = 1'-0"

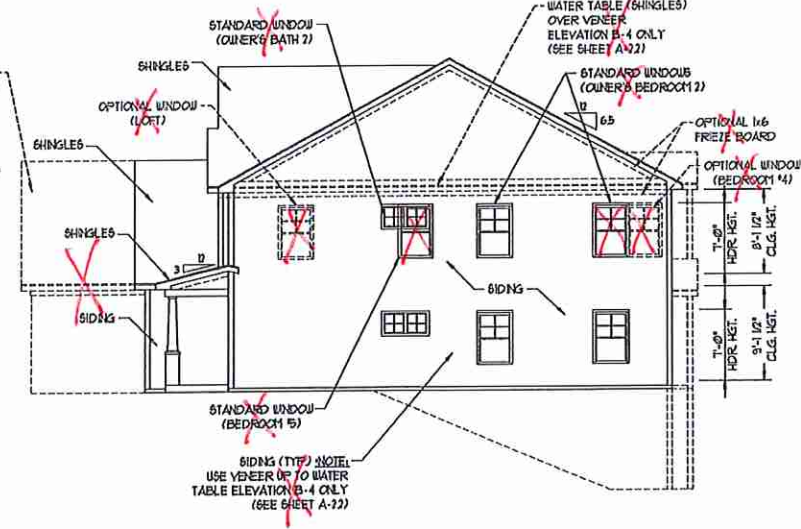
**** NOTE: SEE PAGE A-2.1 FOR SPECIFIC FRONT ELEVATION-B DETAILS. SEE PAGE A-2.2 FOR B-4 (ALL BRICK) ELEVATIONS**



RIGHT ELEVATION
SCALE: 1/8" = 1'-0"

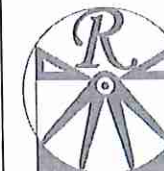


REAR ELEVATION
SCALE: 1/8" = 1'-0"



LEFT ELEVATION
SCALE: 1/8" = 1'-0"

JW

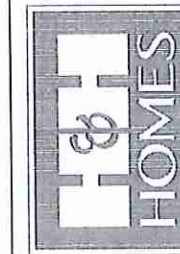


RENAISSANCE
RESIDENTIAL DESIGN, INC.
4810 GLENVIEW CT. | RALEIGH, NC 27612
(919) 619-4128
WWW.RENDESIGN.COM

The art of transforming your vision into reality:
RENAISSANCE RESIDENTIAL DESIGN, INC. RESERVES THE RIGHT TO MAKE MODIFICATIONS TO FLOOR PLANS, CONCEPTS, MATERIALS, AND SPECIFICATIONS WITHOUT NOTICE. THESE DRAWINGS ARE FOR THE PURPOSE OF CONCEPTUAL ARCHITECTURAL CONCEPT ONLY.

RENAISSANCE RESIDENTIAL DESIGN, INC. HEREBY EXPRESSLY RESERVES THE COMMON LAW COPYRIGHT AND OTHER PROPERTY RIGHTS IN THESE PLANS. THESE PLANS AND DIMENSIONS ARE NOT TO BE REPRODUCED, CHANGED, OR COPIED IN ANY MANNER WITHOUT THE WRITTEN CONSENT OF RENDESIGN. RESIDENTIAL DESIGN, INC. AGREES THEY TO BE KEPT IN STRICTLY CONFIDENTIALITY AND NOT TO BE REPRODUCED OR COPIED.

J.S. THOMPSON
ENGINEERING, INC.
600 WALKER AVE., SUITE 101
RALEIGH, NC 27605
PHONE: (919) 284-9919
FAX: (919) 281-9921
N.C. LICENSE NO. C-1213



THESE ARCHITECTURAL DRAWINGS, SPECIFICATIONS, OPTIONS, FLOOR PLANS, ELEVATIONS, DETAILS, MATERIALS AND DIMENSIONS ARE SUBJECT TO CHANGE WITHOUT NOTICE. SQUARE FOOTAGE AND DIMENSIONS ARE ESTIMATED AND NOT TO BE TAKEN AS FINAL. ALL DIMENSIONS OF HOUSE OR LOT SHALL BE DETERMINED BY THE SITE PLAN AND PLAT PLAN. FLOOR PLANS AND ELEVATION DRAWINGS ARE ARTIST CONCEPTS. FLOOR PLANS ARE TO BE USED FOR ADAPTATION OR DISPLAY OF THE PLANS IS STRICTLY PROHIBITED. SEE H&H HOME SALES CONSULTANT FOR CURRENT DETAILS. COPYRIGHT © 2019 H&H HOMES

H&H HOMES, INC.
JACKSON

DATE: FEBRUARY 27, 2019
REV: JANUARY 16, 2020
SCALE: AS NOTED
DRAWN BY: WG
ENGINEERED BY: WLF
REVIEWED BY: JES

B - ELEVATION
OPTIONS
A-2.1



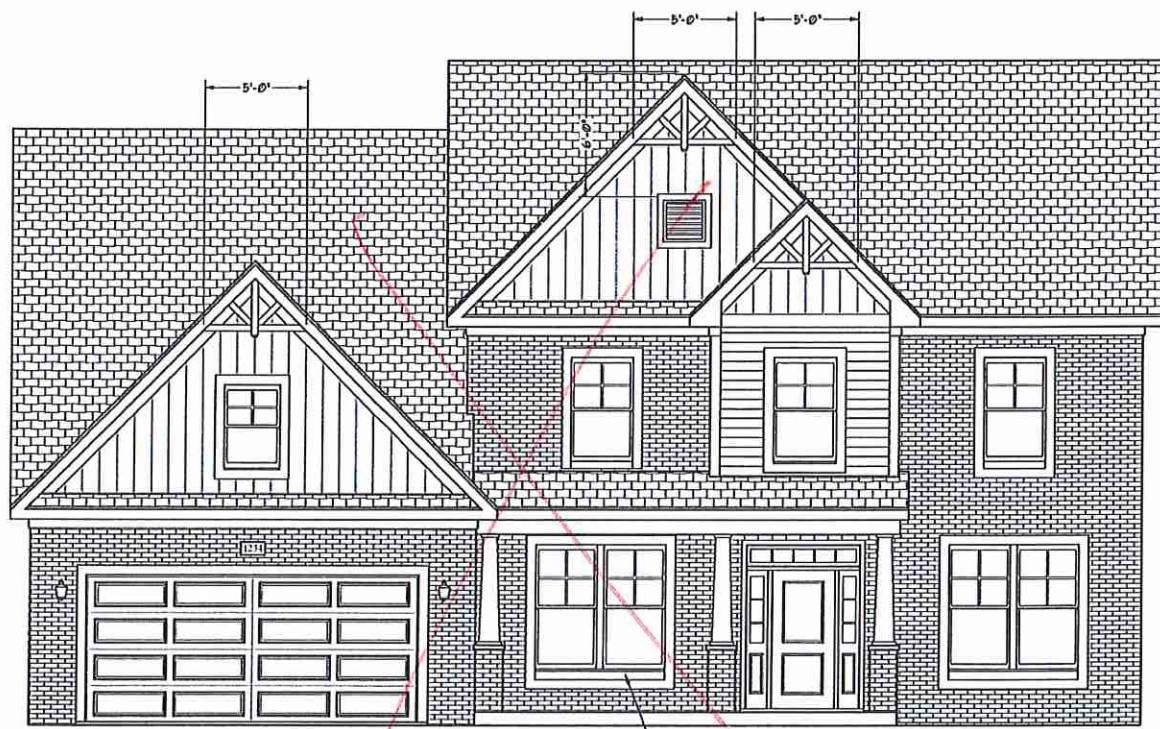
Sideboard

FRONT ELEVATION-B-2
SCALE: 1/4" = 1'-0"

STONE



FRONT ELEVATION-B-1
SCALE: 1/4" = 1'-0"



BRICK OR STONE
LEDGE AS SPEC. (TYP.)

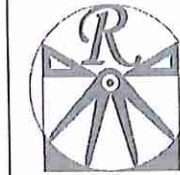
FRONT ELEVATION-B-4
SCALE: 1/4" = 1'-0"



BRICK OR STONE
LEDGE AS SPEC. (TYP.)

FRONT ELEVATION-B-3
SCALE: 1/4" = 1'-0"

JM

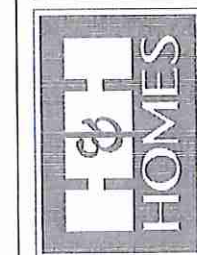


RENAISSANCE
RESIDENTIAL DESIGN, INC.
1610 GLENN ST. CT. 1 | DALLAS, TX 75212
(972) 419-4122
WWW.RDORCKRUA.COM
"The art of transforming your vision into reality."

RENAISSANCE RESIDENTIAL DESIGN, INC. RESERVES THE RIGHT TO MAKE MODIFICATIONS TO FLOOR PLANS, CONSTRUCTION MATERIALS, AND FINISHES WITHOUT NOTICE. THESE CHANGES ARE FOR THE PURPOSE OF CONSTRUCTION AND ARCHITECTURAL CONCEPT ONLY.

RENAISSANCE RESIDENTIAL DESIGN, INC. HEREBY RESERVES THE RIGHT TO MAKE MODIFICATIONS TO FLOOR PLANS, CONSTRUCTION MATERIALS, AND FINISHES WITHOUT NOTICE. THESE CHANGES ARE FOR THE PURPOSE OF CONSTRUCTION AND ARCHITECTURAL CONCEPT ONLY.

J.S. THOMPSON
ENGINEERING, INC.
1000 W. WOODLAND AVE., SUITE 104
DALLAS, TX 75219
PHONE: (972) 781-5519
FAX: (972) 781-0021
N.C. LICENSE NO. C41733



PRICES, PROMOTIONS, INCENTIVES, FEATURES, OPTIONS, FLOOR PLANS, ELEVATIONS, LESSONS, AND CONSTRUCTION MATERIALS ARE SUBJECT TO CHANGE WITHOUT NOTICE. SQUARE FOOTAGE AND DIMENSIONS ARE ESTIMATED AND MAY VARY IN ACTUAL CONSTRUCTION. ACTUAL POSITIONING OF WALLS, FLOOR PLANS, AND ELEVATIONS WILL BE DETERMINED BY THE ARCHITECT. CONCEPTS, FLOOR PLANS ARE THE COPYRIGHTED PROPERTY OF J.S. THOMPSON ENGINEERING, INC. AND ARE NOT TO BE REPRODUCED OR TRANSMITTED IN ANY FORM OR BY ANY MEANS, ELECTRONIC OR MECHANICAL, WITHOUT THE WRITTEN PERMISSION OF J.S. THOMPSON ENGINEERING, INC. FOR CURRENT DETAILS, CONTACT 972.781.5519.

H&H HOMES, INC.
JACKSON

DATE: FEBRUARY 27, 2019
REV.: JANUARY 16, 2020
SCALE: 1/4" = 1'-0"
DRAWN BY: WJG
ENGINEERED BY: WLF
REVIEWED BY: JES

FIRST FLOOR PLAN
A-5

SQUARE FOOTAGE (STANDARD)

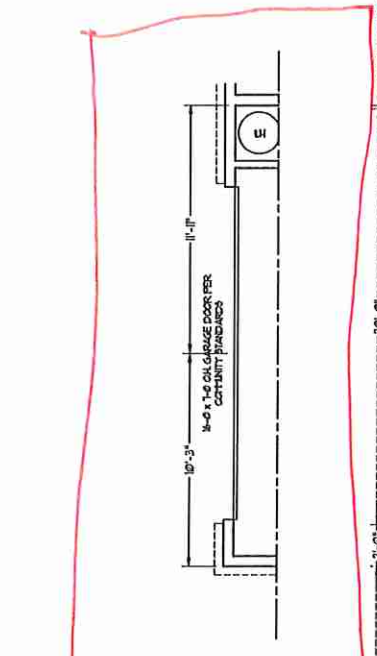
1st FLOOR:	1935 SQ. FT.
2nd FLOOR:	1585 SQ. FT.
TOTAL:	3480 SQ. FT.
GARAGE:	413 SQ. FT.
1st FLOOR (ALL BRICK):	1950 SQ. FT.
2nd FLOOR (ALL BRICK):	1645 SQ. FT.
TOTAL (ALL BRICK):	3595 SQ. FT.
GARAGE (ALL BRICK):	495 SQ. FT.
FRONT PORCH:	172 SQ. FT.
STD. REAR PORCH:	110 SQ. FT.

SQUARE FOOTAGE (OPTIONS)

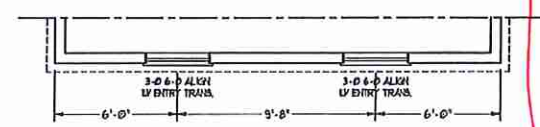
BASEMENT (UNFINISHED):	1035 SQ. FT.
BASEMENT (ALL BRICK):	1950 SQ. FT.
OPT. BONUS/LOFT:	214 SQ. FT.
OPT. 1-CAR GARAGE:	240 SQ. FT.
OPT. 1-CAR GARAGE (ALL BRICK):	259 SQ. FT.
OPT. 3-CAR GARAGE:	112 SQ. FT.
OPT. 3-CAR GARAGE (ALL BRICK):	142 SQ. FT.
OPT. PATIO/DECK:	120 SQ. FT.

vent m/w to exterior

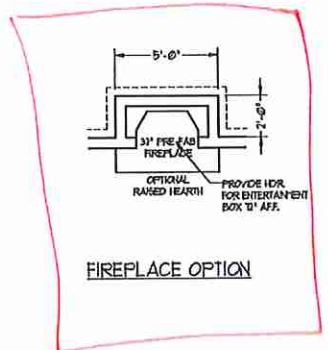
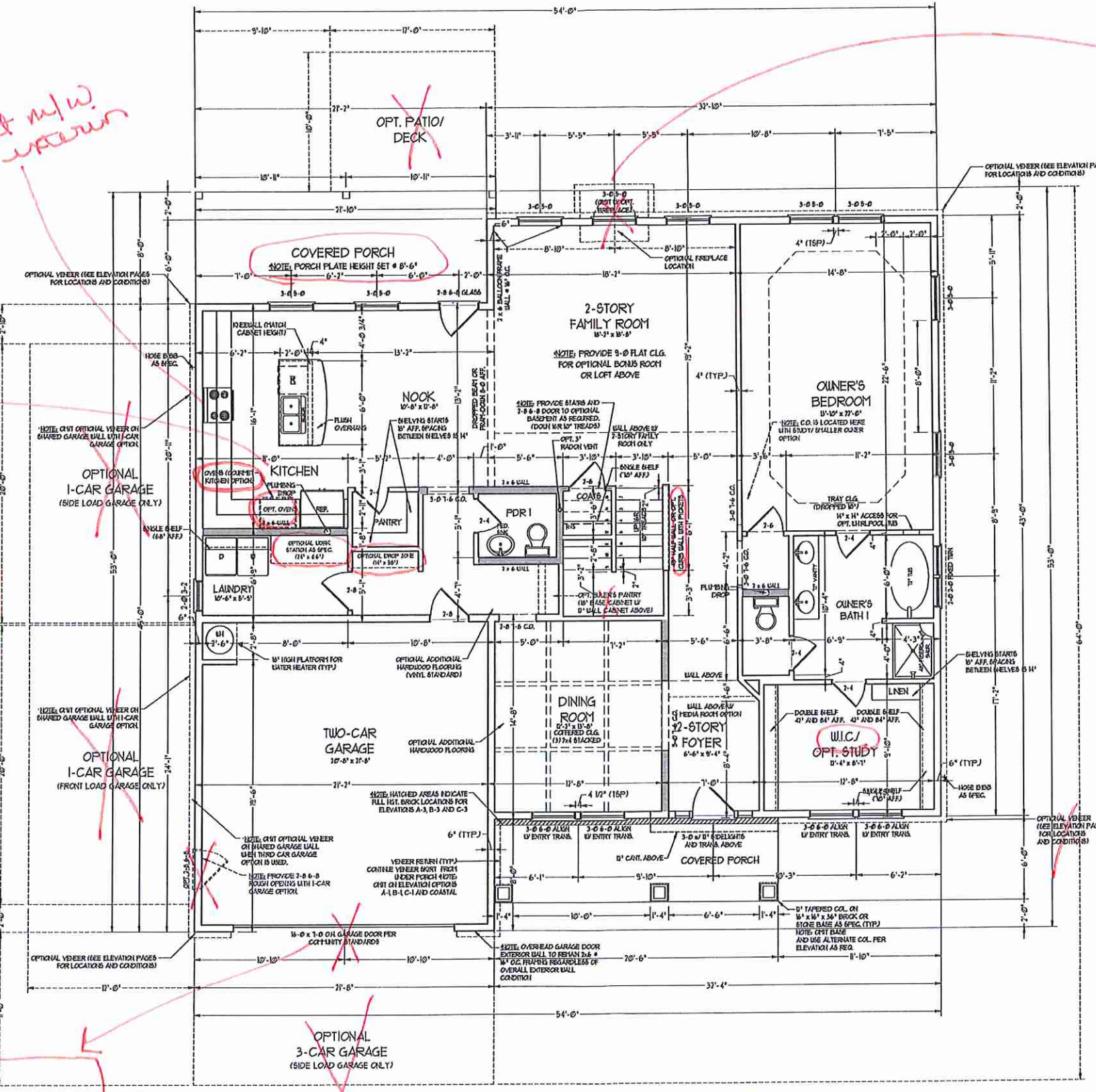
Gourmet Kitchen



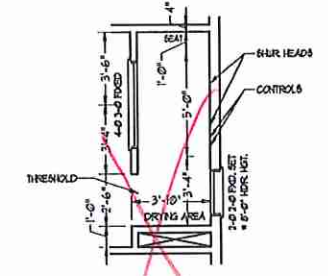
SIDE-LOAD GARAGE OPTION



DOUBLE GARAGE DOOR OPTION



FIREPLACE OPTION

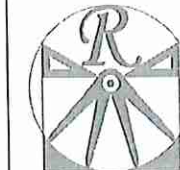


OWNER'S BATH I OPTION - (WALK-IN SHOWER)

NOTE: ALL EXTERIOR WALLS AND ATTIC WALLS ARE TO BE 2 x 6 @ 16" O.C. (UNO). 2 x 4 @ 16" O.C. EXTERIOR WALLS MAY BE CONSTRUCTED IN LIEU OF 2 x 6 WALLS (UNO). ALL INTERIOR LOAD BEARING WALLS ARE TO BE 2 x 4 @ 16" O.C. (UNO) AND NON-LOAD BEARING INTERIOR WALLS ARE TO BE 2 x 4 @ 24" O.C. (UNO).

2x6 WALL
SHADE WALLS ARE TO BE 2 x 6 @ 16" O.C. (LOAD BEARING) OR 2 x 6 @ 24" O.C. (NON-LOAD BEARING) REGARDLESS OF EXTERIOR WALL CONDITION.

WJG

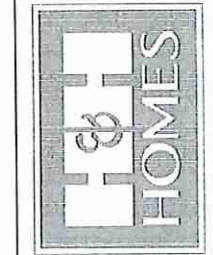


RENAISSANCE
RESIDENTIAL DESIGN, INC.
4510 GLEAVIST CT., RALEIGH, NC 27612
(919) 419-4128
WWW.RDCAROLINA.COM
"The art of transforming your vision into reality."

RENAISSANCE RESIDENTIAL DESIGN, INC. RECEIVES THE RIGHT TO MAKE MODIFICATIONS TO FLOOR PLANS, DIMENSIONS, MATERIALS AND SPECIFICATIONS WITHOUT NOTICE. THESE DRAWINGS ARE FOR THE PURPOSES OF CONSTRUCTION AND ARCHITECTURAL CONCEPT ONLY.

RENAISSANCE RESIDENTIAL DESIGN, INC. HEREBY EXPRESSLY AGREES TO CONVEY ALL RIGHTS AND OTHER PROPERTY RIGHTS IN THESE PLANS. THESE PLANS AND SPECIFICATIONS ARE NOT TO BE REPRODUCED, COPIED OR OTHERWISE TRANSMITTED IN ANY MANNER WITHOUT THE WRITTEN PERMISSION OF RENAISSANCE RESIDENTIAL DESIGN, INC. FOR MORE INFORMATION CONTACT: (919) 419-4128. FAX: (919) 250-0925. N.C. LICENSE NO. C-3733

J.S. THOMPSON
ENGINEERING, INC.
100 W. WAKE AVE., SUITE 101
RALEIGH, NC 27605
PHONE: (919) 250-0925
FAX: (919) 250-0925
N.C. LICENSE NO. C-3733

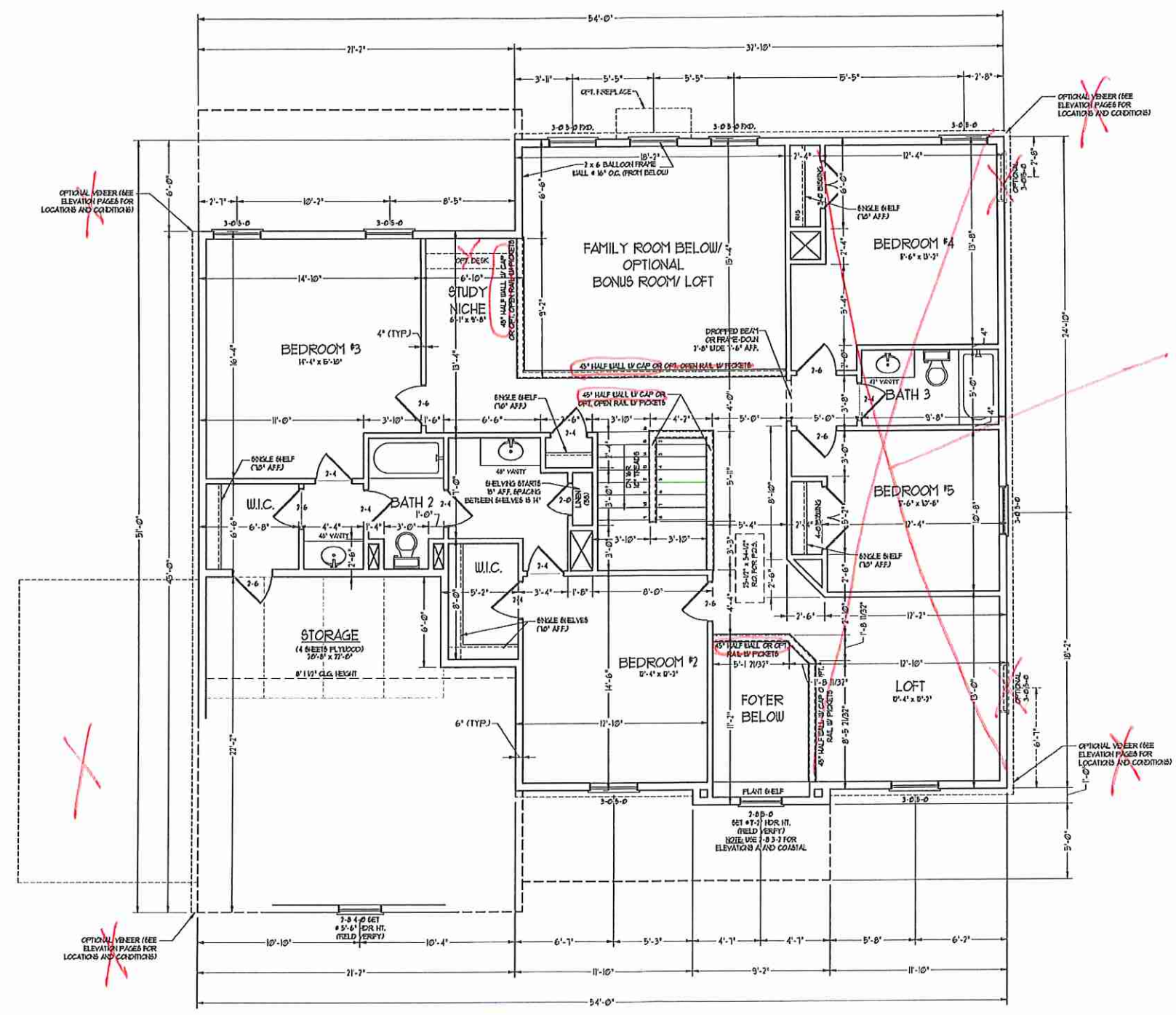
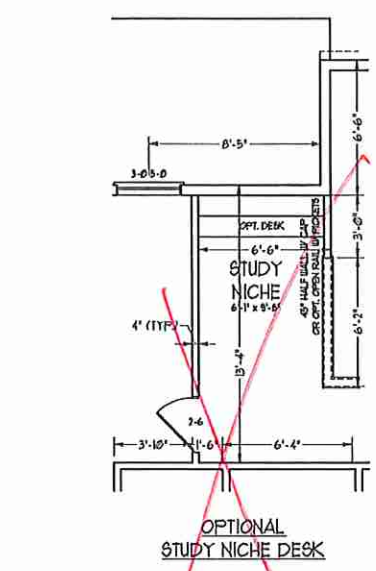


PRICE: PROMOTIONAL, INCENTIVE, FEATURE. OPTICAL FLOOR PLANS, ELEVATIONS, SECTION DRAWINGS, AND DIMENSIONS ARE ESTIMATED AND MAY VARY IN ACTUAL CONSTRUCTION. ACTIVITY ON THE SITE IS AN INDICATOR OF CONCEPTS. FLOOR PLANS AND ELEVATION READINGS ARE PRINTED ON A SCALE OF 1/4" = 1'-0". ALL DIMENSIONS ARE TO FACE UNLESS OTHERWISE NOTED. SEE REVISIONS FOR ALL CHANGES. ALL DIMENSIONS ARE TO FACE UNLESS OTHERWISE NOTED. SEE REVISIONS FOR ALL CHANGES. ALL DIMENSIONS ARE TO FACE UNLESS OTHERWISE NOTED. SEE REVISIONS FOR ALL CHANGES.

H&H HOMES, INC.
JACKSON

DATE: FEBRUARY 27, 2019
REV.: JANUARY 16, 2020
SCALE: 1/4" = 1'-0"
DRAWN BY: WJG
ENGINEERED BY: WLF
REVIEWED BY: JES

SECOND FLOOR PLAN
A-6

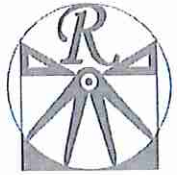


NOTE: ALL EXTERIOR WALLS AND ATTIC WALLS ARE TO BE 2 x 6 @ 16" O.C. (UNO). 2 x 4 @ 16" O.C. EXTERIOR WALLS MAY BE CONSTRUCTED IN LIEU OF 2 x 6 WALLS (UNO). ALL INTERIOR LOAD BEARING WALLS ARE TO BE 2 x 4 @ 16" O.C. (UNO) AND NON-LOAD BEARING INTERIOR WALLS ARE TO BE 2 x 4 @ 24" O.C. (UNO).

2x6 WALL
* SHADED WALLS ARE TO BE 2 x 6 @ 16" O.C. (LOAD BEARING) OR 2 x 6 @ 24" O.C. (NON-LOAD BEARING) REGARDLESS OF EXTERIOR WALL CONDITION

See Media Room Option

Jas



RENAISSANCE
RESIDENTIAL DESIGN, INC.
1810 GLENNVIEW CT., J. HALEIGH, NC 27612
(919) 408-4128
WWW.RENDESIGN.COM
"The art of translating your vision into reality."

RENAISSANCE RESIDENTIAL DESIGN, INC. HEREBY EXPRESSLY REPRESENTS BY CONSTRUCTION SPECIFICATIONS AND OTHER PROPERTY PAPERS BY THESE PLANS, THESE PLANS AND DIMENSIONS SHALL NOT BE REPRODUCED, CHANGED, OR COVERED UP FOR ANY PURPOSES WITHOUT FIRST CONTACTING THE EXPRESS WRITTEN CONSENT OF RENAISSANCE RESIDENTIAL DESIGN, INC. IF YOU ARE THE PARTY WITH FIRST CONTACT, YOU SHALL NOTIFY RENAISSANCE RESIDENTIAL DESIGN, INC. IN WRITING BY REGISTERED MAIL.

RENAISSANCE RESIDENTIAL DESIGN, INC. HEREBY EXPRESSLY REPRESENTS BY CONSTRUCTION SPECIFICATIONS AND OTHER PROPERTY PAPERS BY THESE PLANS, THESE PLANS AND DIMENSIONS SHALL NOT BE REPRODUCED, CHANGED, OR COVERED UP FOR ANY PURPOSES WITHOUT FIRST CONTACTING THE EXPRESS WRITTEN CONSENT OF RENAISSANCE RESIDENTIAL DESIGN, INC. IF YOU ARE THE PARTY WITH FIRST CONTACT, YOU SHALL NOTIFY RENAISSANCE RESIDENTIAL DESIGN, INC. IN WRITING BY REGISTERED MAIL.

J.S. THOMPSON
ENGINEERING, INC.
100 N. WILSON AVE., SUITE 101
RALEIGH, NC 27605
PHONE: (919) 783-9500
FAX: (919) 783-9521
S.C. LICENSE NO. C-1173

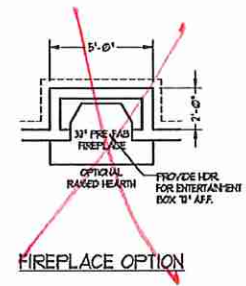


PRICES, PROVISIONS, INSURANCE, FEATURES, OPTIONS, FLOOR FINISHES, ETC. ARE SUBJECT TO CHANGE WITHOUT NOTICE. SQUARE FOOTAGE AND DIMENSIONS ARE ESTIMATED AND MAY VARY IN ACTUAL CONSTRUCTION. ALL DIMENSIONS SHALL BE AS SHOWN UNLESS OTHERWISE NOTED BY THE SEE PLANS AND FLOOR PLAN. CONCEPTUAL FLOOR PLANS ARE THE COPYRIGHTED PROPERTY OF H&H HOMES. ALL RIGHTS ARE RESERVED. REVISIONS OR CHANGES TO THESE PLANS ARE STRICTLY PROHIBITED. SEE NEW HOME SALES CONSULTANT FOR CURRENT DETAILS. COPYRIGHT © 2019 H&H HOMES

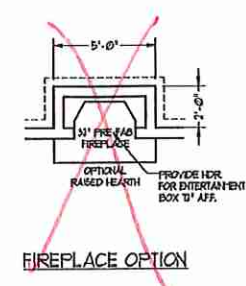
H&H HOMES, INC.
JACKSON

DATE: FEBRUARY 27, 2019
REV.: JANUARY 16, 2020
SCALE: 1/4" = 1'-0"
DRAWN BY: WJG
ENGINEERED BY: WJF
REVIEWED BY: JES

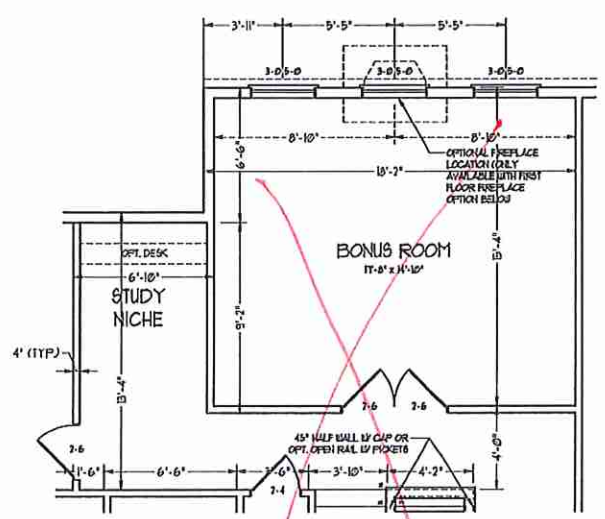
SECOND FLOOR PLAN
A-6.1



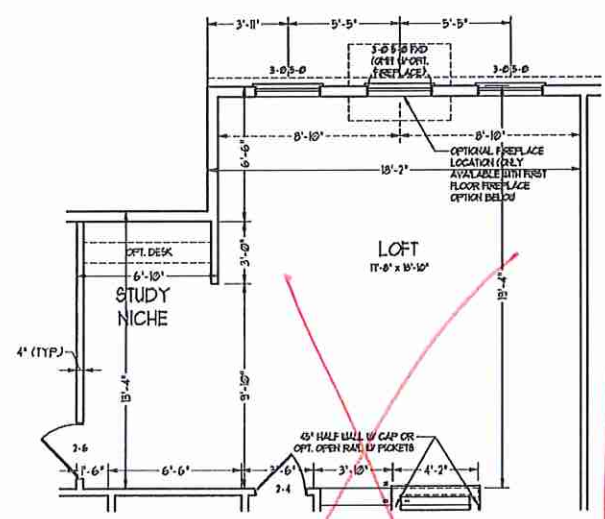
FIREPLACE OPTION



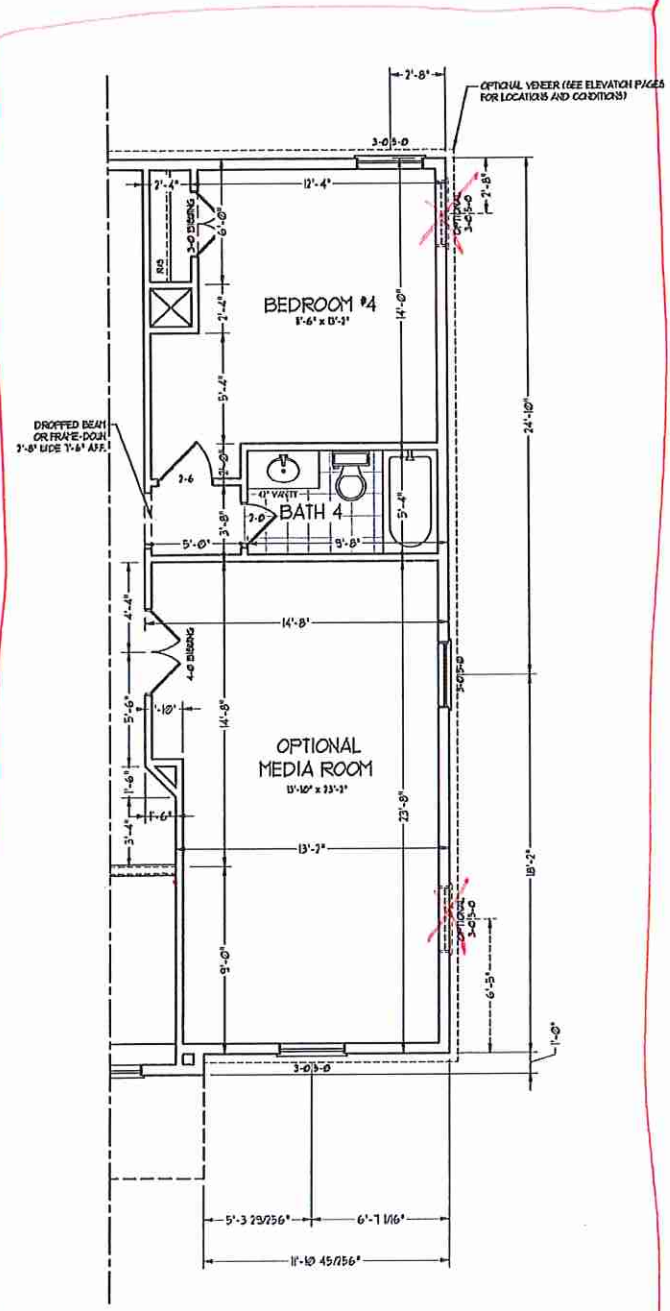
FIREPLACE OPTION



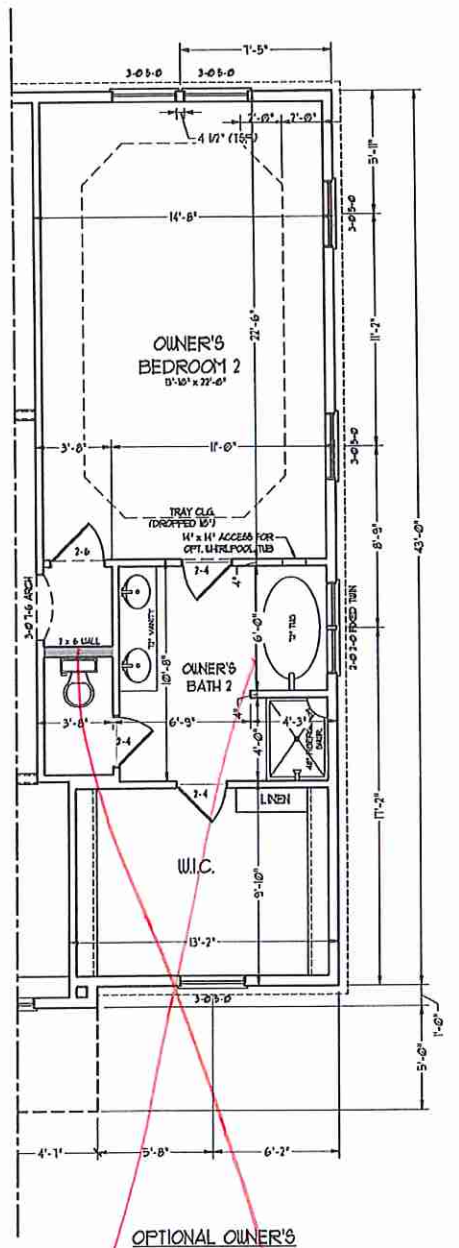
OPTIONAL BONUS ROOM
(ADD 274 SQ. FT.)



OPTIONAL LOFT
(ADD 274 SQ. FT.)



OPTIONAL MEDIA ROOM



OPTIONAL OWNER'S BEDROOM 2

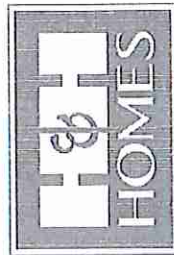
Jm



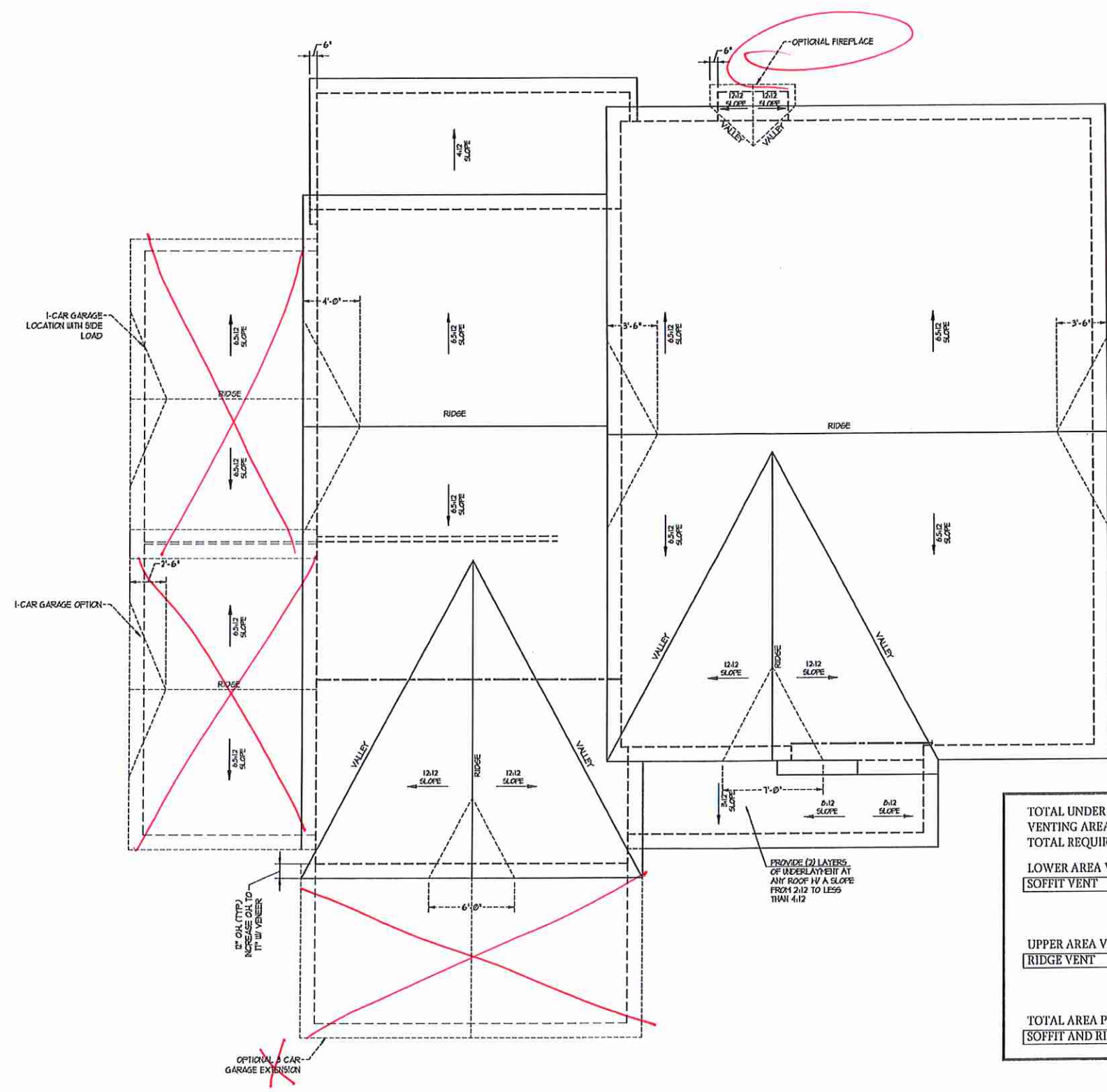
RENAISSANCE
RESIDENTIAL DESIGN, INC.
4810 GLENNIST CT. | RALEIGH, NC 27612
(919) 649-4128
WWW.REDDCARCH.COM

"The art of transforming your vision into reality."
RENAISSANCE RESIDENTIAL DESIGN, INC. RESERVES THE RIGHT TO MAKE ANY CHANGES TO ANY DRAWING, SPECIFICATIONS, MATERIALS, AND DESIGN WITHOUT NOTICE. THESE DRAWINGS ARE FOR THE PURPOSE OF CONSTRUCTION ARCHITECTURAL CONCEPT ONLY.
RENAISSANCE RESIDENTIAL DESIGN, INC. DOES NOT PROVIDE ENGINEERING OR ARCHITECTURAL SERVICES. THESE PLANS AND DRAWINGS ARE NOT TO BE REPRODUCED, EXAGGERATED, COPIED, OR FORWARDED TO ANY OTHER PARTY WITHOUT THE EXPRESS WRITTEN PERMISSION OF RENAISSANCE RESIDENTIAL DESIGN, INC. IF YOU ARE NOT THE ORIGINAL CLIENT OF THESE PLANS, PLEASE CONTACT THE ORIGINAL CLIENT FOR PERMISSION TO REPRODUCE OR COPY ANY CONTENT.

J.S. THOMPSON
ENGINEERING, INC.
400 W. WALKER AVE., SUITE 104
RALEIGH, NC 27605
PHONE: (919) 260-9919
FAX: (919) 260-9921
S.C. LICENSE NO. C-12133



PRICES, PROMOTIONS, INCENTIVES, FEATURES, OPTIONS, FLOOR PLANS, ELEVATIONS, RESOURCES, MATERIALS, AND FINISHES ARE SUBJECT TO CHANGE WITHOUT NOTICE. SQUARE FOOTAGE AND DIMENSIONS ARE ESTIMATED AND MAY VARY IN ACTUAL CONSTRUCTION. ACTUAL POSITION OF HOUSE ON LOT IS TO BE DETERMINED BY SURVEY. FLOOR PLANS AND ELEVATIONS ARE THE COPYRIGHTED PROPERTY OF H&H HOMES, INC. ALL RIGHTS ARE RESERVED. REPRODUCTION OR DISTRIBUTION OF THESE PLANS IS PROHIBITED. SEE NEW HOME SALES CONSULTANT FOR CURRENT DETAILS. COPYRIGHT © 2019 H&H HOMES

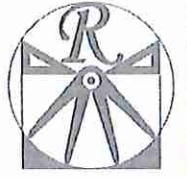


TOTAL UNDER ROOF AREA:	2365 SQ. FT. / 300 =	2365	SQ. FT.
VENTING AREA REQUIRED:		7.88	SQ. FT.
TOTAL REQUIREMENTS:	LOWER: 3.94	UPPER: 3.94	
LOWER AREA VENTING			
SOFFIT VENT	SIZE:	PER UNIT:	# UNITS: PROVIDED:
	-	.041 SF/LF	112'-0" 4.6
LOWER AREA VENTING PROVIDED: -			
UPPER AREA VENTING			
RIDGE VENT	SIZE:	PER UNIT:	# UNITS: PROVIDED:
	-	.125 SF/LF	32'-0" 4
UPPER AREA VENTING PROVIDED: -			
TOTAL AREA PROVIDED			
SOFFIT AND RIDGE VENT			8.6

H&H HOMES, INC.
JACKSON

DATE: FEBRUARY 27, 2019
REV.: JANUARY 16, 2020
SCALE: 1/4"=1'-0"
DRAWN BY: WCG
ENGINEERED BY: WLF
REVIEWED BY: JES

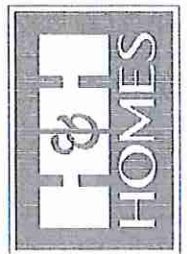
ROOF PLAN
ELEVATIONS -
B&C
S-4



RENAISSANCE
RESIDENTIAL DESIGN, INC.
4810 CLEAVIST CT., FOLEY, NC 27642
(919) 610-4120
WWW.RDCAECHEAL.COM

"The art of transforming your vision into reality."
RENAISSANCE RESIDENTIAL DESIGN, INC. RESERVE THE RIGHT TO MAKE MODIFICATIONS TO FLOOR PLANS, SPECIFICATIONS, MATERIALS AND REVISIONS WITHOUT NOTICE. THESE DRAWINGS ARE FOR THE PURPOSE OF CONSTRUCTION AND ARCHITECTURAL CONCEPT ONLY.
RENAISSANCE RESIDENTIAL DESIGN, INC. RECEIVES EXPRESS PERMISSION TO CONSULT WITH ARCHITECTS AND OTHER PROFESSIONAL ENGINEERS IN CONNECTION WITH THESE PLANS AND CONCEPTS ARE NOT TO BE REPRODUCED, COPIED, OR COPIED FROM ANY SOURCE WITHOUT FIRST CONTACTING THE OFFICES OF RENAISSANCE RESIDENTIAL DESIGN, INC. ANY OTHER USE OF THESE DRAWINGS WITHOUT THE WRITTEN PERMISSION OF RENAISSANCE RESIDENTIAL DESIGN, INC. IS PROHIBITED.

J.S. THOMPSON
REGISTERED PROFESSIONAL ENGINEER
140 W. WARE AVE., SUITE 104
RALEIGH, NC 27605
PHONE: (919) 887-0919
FAX: (919) 887-0921
N.C. LICENSE NO. C1713



Prices, promotions, incentives, features, materials, and floor plans, elevations, and drawings are estimated and may vary in actual construction. Actual prices and conditions of materials, labor, and other items are subject to change without notice. Square footage and dimensions are estimates and may vary in actual construction. Actual prices and conditions of materials, labor, and other items are subject to change without notice. Floor plans and elevations are subject to change without notice. All dimensions are approximate. All drawings are the property of H&H Homes, Inc. and are to be used only for the project and location specified. All other uses are prohibited. © 2019 H&H HOMES

H&H HOMES, INC.
JACKSON

DATE: FEBRUARY 27, 2019
REV.: JANUARY 16, 2020
SCALE: 1/4"=1'-0"
DRAWN BY: WG
ENGINEERED BY: WLF
REVIEWED BY: JES

FIRST FLOOR
ELECTRICAL
PLAN

HVAC LEGEND

- RETURN AIR
- SUPPLY GRILLE
- AHU AIR HANDLING UNIT
- HP HEAT PUMP
- THERMOSTAT

ELECTRICAL LAYOUT NOTES:

- 1) BLOCK AND WIRE FOR ALL CECIL FANS PER PLAN
- 2) VANITY LIGHTS TO BE SET #50' AFF. (TYP)
- 3) ADDITIONAL EXTERIOR OUTLETS REQUIRED BY CODE TO BE LOCATED BY ELECTRICIAN
- 4) PLACE SWITCHES 4" MIN FROM ROUGH OPENINGS.

ELECTRICAL LEGEND

- 10 V OUTLET
- 10 V GFI OUTLET
- 10 V GFI OUTLET
- 10 V GFI OUTLET
- 10 V GFI OUTLET
- 4-FLEX
- COUNTER OR FLOOR MOUNTED
- COUNTER OR FLOOR MOUNTED 10V GFI
- LEATHERPROOF
- 70 V OUTLET
- 70 V DEDICATED CIRCUIT
- 70 V DEDICATED CIRCUIT
- SPECIAL PURPOSE (140 V, ETC)
- WALL MOUNT LIGHT
- CEILING MOUNT LIGHT
- PENDANT LIGHT
- RECESSED CAN LIGHT
- HFI CAN LIGHT
- EYEBALL LIGHT
- FLUORESCENT LIGHT
- UNDERCABINET LIGHT
- FLOOD LIGHT
- SWITCH
- 3-WAY SWITCH
- 4-WAY SWITCH
- DIMMER SWITCH
- TELEPHONE
- TV CONNECTION
- CONDUIT FOR COMPONENT WIRING
- SPEAKER
- DOORBELL CHIME
- 10 V SMOKE DETECTOR
- EXHAUST FAN
- LOW VOLTAGE PANEL
- CEILING FAN
- CEILING FAN w/ LIGHT

Vent 1/2" w/ to exterior

gourmet kitchen

Sideload Garage

SIDE-LOAD GARAGE OPTION (AVAILABLE WITH OPTIONAL ONE-CAR GARAGE)

2 Recessed cans w/ switch

110v Fan TV mount.

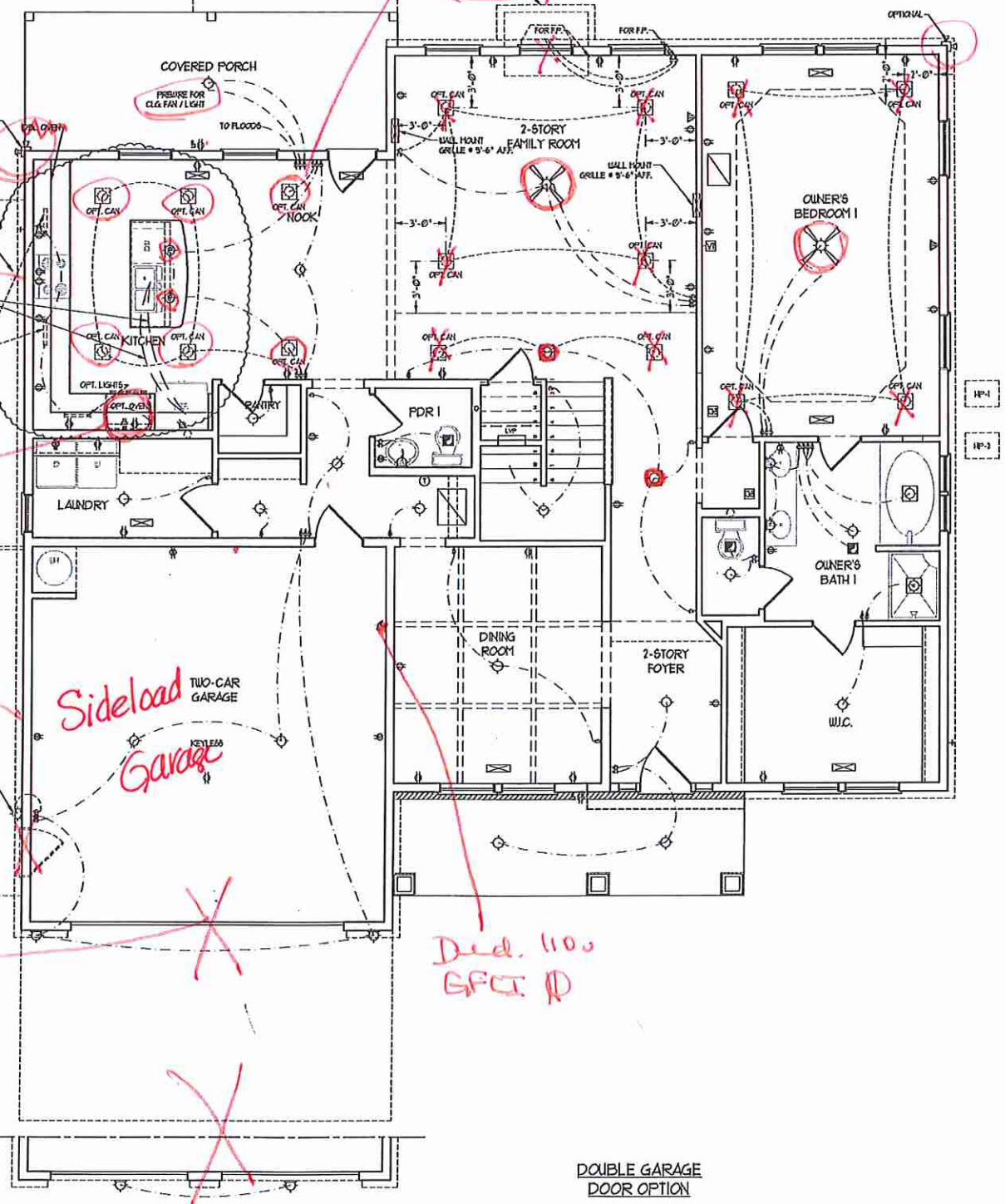
FIREPLACE OPTION

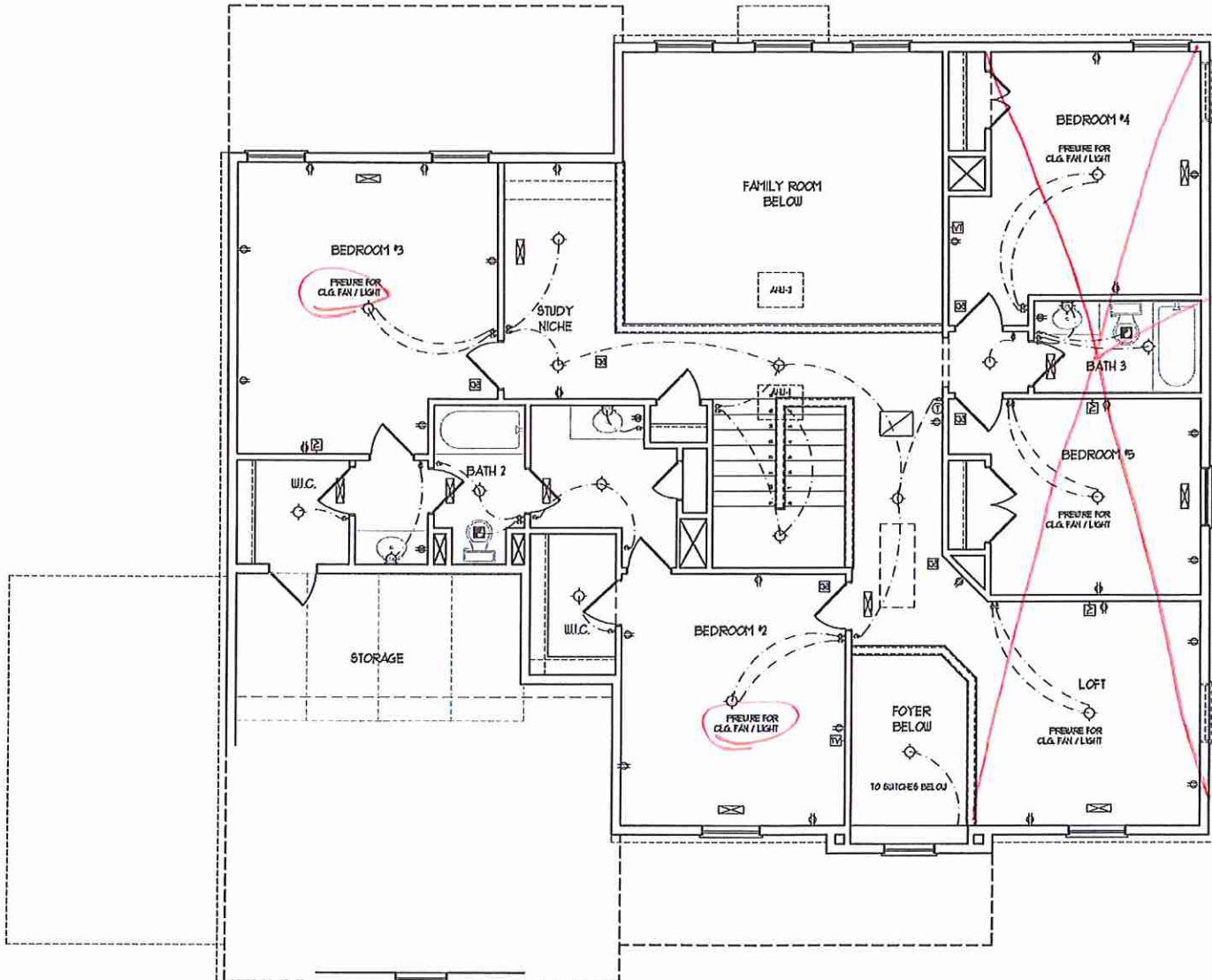
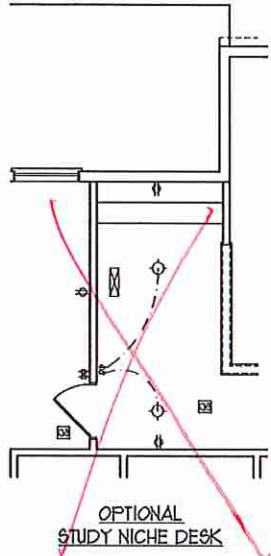
OWNER'S BEDROOM I OPTION (WALK-IN SHOWER)

DED. 110V GFCI R

DOUBLE GARAGE DOOR OPTION

JM





*See
Media
Room
Option*

HVAC LEGEND

- RETURN AIR
- SUPPLY GRILLE
- AIR HANDLING UNIT
- HEAT PUMP
- THERMOSTAT

ELECTRICAL LAYOUT NOTES:

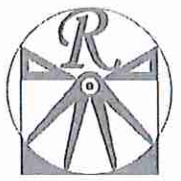
- 1) BLOCK AND USE FOR ALL CEILING FANS PER PLAN.
- 2) VANTY LIGHTS TO BE SET # 50" AFF. (TYP)
- 3) ADDITIONAL EXTERIOR OUTLETS REQUIRED BY CODE TO BE LOCATED BY ELECTRICAL.
- 4) PLACE SWITCHES 6" FROM ROUGH OPENINGS.

ELECTRICAL LEGEND

- 120 V OUTLET
- 120 V GFI OUTLET
- 120 V SWITCHED OUTLET
- 120 V BASEBOARD OUTLET
- 4-FLEX
- COUNTER OR FLOOR MOUNTED
- COUNTER OR FLOOR MOUNTED 120V GFI
- LEAK PROOF
- 720 V OUTLET
- 120 V DEDICATED CIRCUIT
- 720 V DEDICATED CIRCUIT
- SPECIAL PURPOSE (120 V, ETC)
- WALL MOUNT LIGHT 1P
- CEILING MOUNT LIGHT
- PENDANT LIGHT
- RECESSED CAN LIGHT
- HIN CAN LIGHT
- EYEBALL LIGHT
- FLUORESCENT LIGHT
- UNDERCABINET LIGHT
- FLOOD LIGHT
- SWITCH
- 3-WAY SWITCH
- 4-WAY SWITCH
- DIMMER SWITCH
- TELEPHONE
- TV CONNECTION
- CONDUIT FOR COMPONENT WIRING
- SPEAKER
- DOORBELL CHIME
- 120 V SMOKE DETECTOR
- EXHAUST FAN
- LOW VOLTAGE PANEL 120V

- CEILING FAN
- CEILING FAN w/ LIGHT

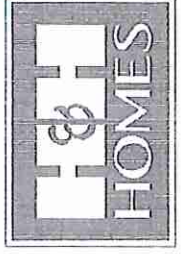
JW



RENAISSANCE
RESIDENTIAL DESIGN, INC.
4810 GLENVIEW CT. | RALEIGH, NC 27612
(919) 649-4128
WWW.RENDESIGN.COM
"The art of transforming your vision into reality."

RENAISSANCE RESIDENTIAL DESIGN, INC. RESERVES THE RIGHT TO MAKE MODIFICATIONS TO FLOOR PLANS, EXTERIOR MATERIALS, AND SPECIFICATIONS WITHOUT NOTICE. THESE DRAWINGS ARE FOR THE PURPOSE OF CONVEYING AN ARCHITECTURAL CONCEPT ONLY.
RENAISSANCE RESIDENTIAL DESIGN, INC. HEREBY EXPRESSLY RESERVES ITS COMMON LAW AND OTHER PROPRIETARY RIGHTS IN THESE PLANS. THESE PLANS AND DRAWINGS ARE NOT TO BE REPRODUCED, COPIED, OR USED IN ANY MANNER WITHOUT THE EXPRESS WRITTEN PERMISSION OF RENAISSANCE RESIDENTIAL DESIGN, INC. ANY USE THEREOF WITHOUT THE EXPRESS WRITTEN PERMISSION OF RENAISSANCE RESIDENTIAL DESIGN, INC. IS PROHIBITED. SEE NEW HOME SALES CONSULTANT FOR CURRENT DETAILS. COPYRIGHT © 2019 H&H HOMES

J.S. THOMPSON
ENGINEERING, INC.
100 W. WILKIE AVE., SUITE 104
RALEIGH, NC 27605
PHONE: (919) 784-9119
FAX: (919) 784-9121
N.C. LICENSE NO. C-11213

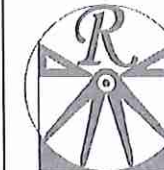


PRICES, PROMOTIONS, INCENTIVES, FEATURES, OPTIONS, FLOOR PLANS, ELEVATIONS, DESIGN, MATERIALS, AND FINISHES ARE SUBJECT TO CHANGE WITHOUT NOTICE. SQUARE FOOTAGE AND DIMENSIONS ARE ESTIMATED AND MAY VARY IN ACTUAL CONSTRUCTION. ACTUAL POSITION OF HOUSE ON LOT IS NOT GUARANTEED. THESE PLANS AND ELEVATIONS ARE THE PROPERTY OF H&H HOMES, INC. ANY USE, REPRODUCTION, OR DISTRIBUTION OF THESE PLANS IS PROHIBITED. SEE NEW HOME SALES CONSULTANT FOR CURRENT DETAILS. COPYRIGHT © 2019 H&H HOMES

H&H HOMES, INC.
JACKSON

DATE: FEBRUARY 27, 2019
REV.: JANUARY 16, 2020
SCALE: 1/4"=1'-0"
DRAWN BY: WG
ENGINEERED BY: WLF
REVIEWED BY: JES

SECOND FLOOR
ELECTRICAL
PLAN
E-2

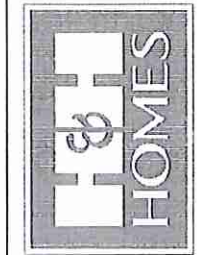


RENAISSANCE
RESIDENTIAL DESIGN, INC.
4810 GLENHAST CT. | RALEIGH, NC 27612
(919) 619-4128
WWW.RADOCORP.COM

"The art of transferring your vision into reality."
RENAISSANCE RESIDENTIAL DESIGN, P.C. RECEIVES THE RIGHT TO MAKE MODIFICATIONS TO FLOOR PLANS, DIMENSIONS, MATERIALS, AND SPECIFICATIONS WITHOUT NOTICE. THESE DIMENSIONS ARE FOR THE PURPOSES OF CONSTRUCTION AND ARCHITECTURAL CONCEPT ONLY.

RENAISSANCE RESIDENTIAL DESIGN, P.C. HEREBY EXPRESSLY RECEIVES ITS CONSTRUCTION COPYRIGHT AND OTHER PROTECTION RIGHTS IN THESE PLANS. THESE PLANS AND DIMENSIONS ARE NOT TO BE REPRODUCED, CHANGED, OR CONSIDERED FOR CONSTRUCTION WITHOUT FIRST OBTAINING THE EXPRESS WRITTEN CONSENT OF RENAISSANCE RESIDENTIAL DESIGN, P.C. HEREIN THEY ARE TO BE ASSIGNED TO ANY THIRD PARTY THROUGH THE SALE OF THE PROPERTY. ANY REPRODUCTION, MODIFICATION, OR CONSTRUCTION WITHOUT THE EXPRESS WRITTEN PERMISSION OF RENAISSANCE RESIDENTIAL DESIGN, P.C. IS PROHIBITED.

J.S. THOMPSON
ENGINEERING, INC.
100 WALKER AVE., SUITE 104
RALEIGH, NC 27605
PHONE: (919) 780-9910
FAX: (919) 780-9921
NC LICENSE NO. C41253

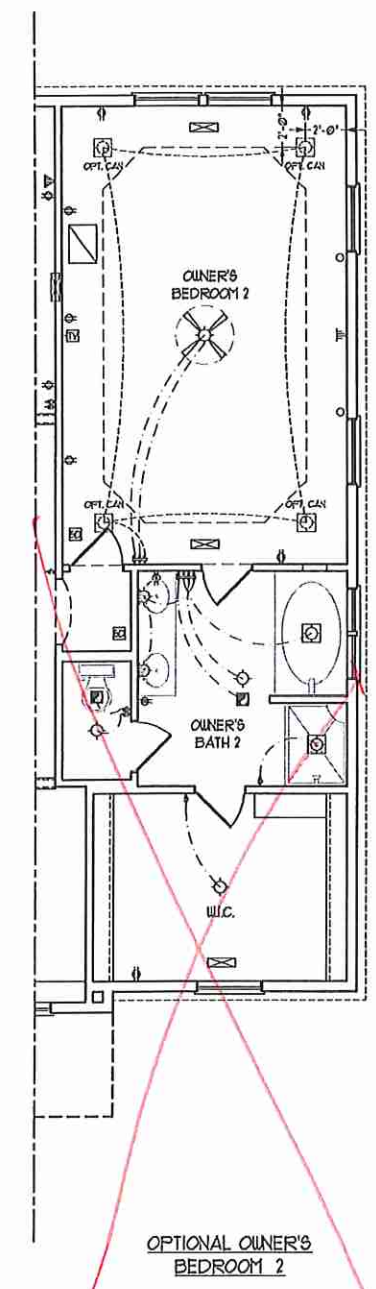
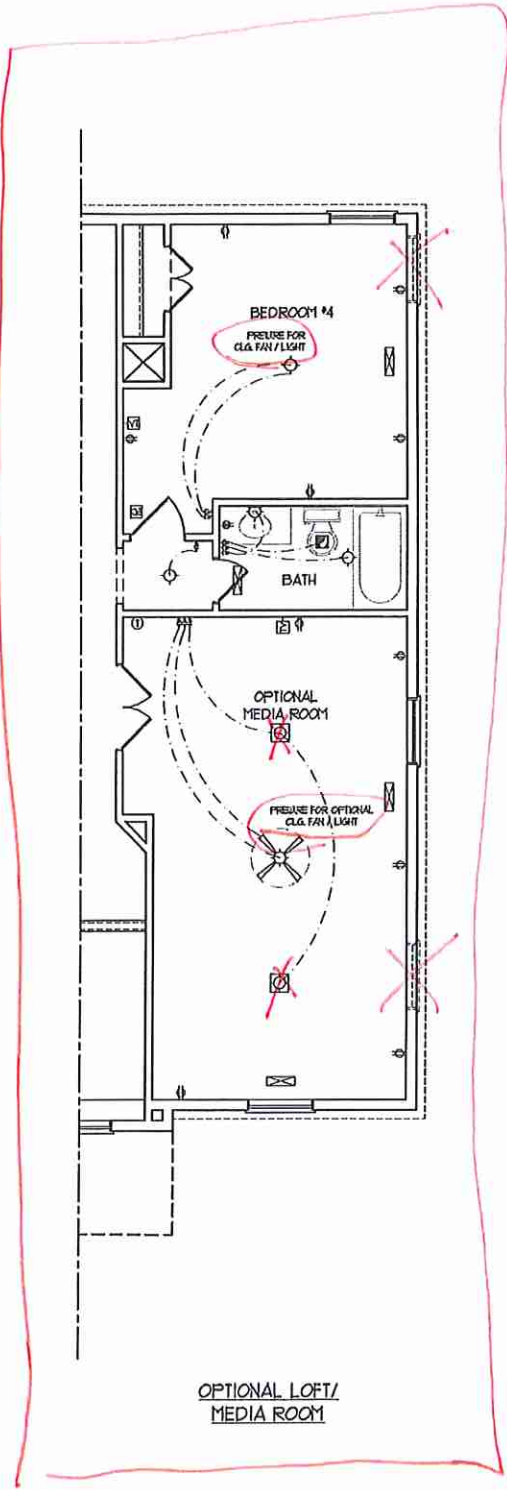
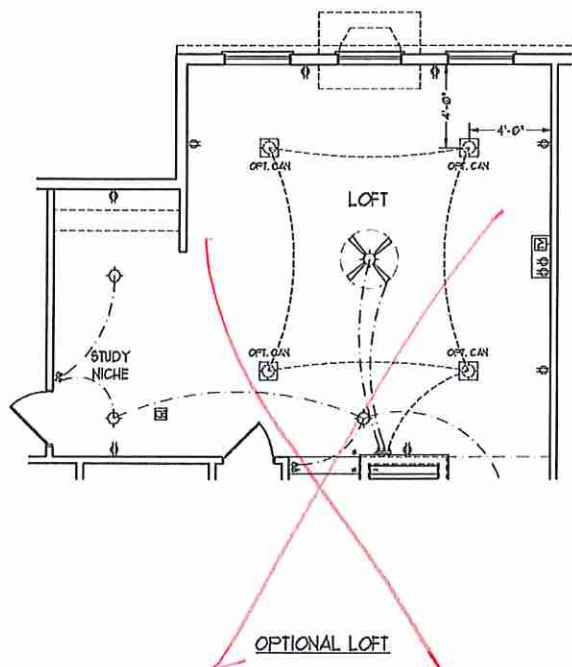
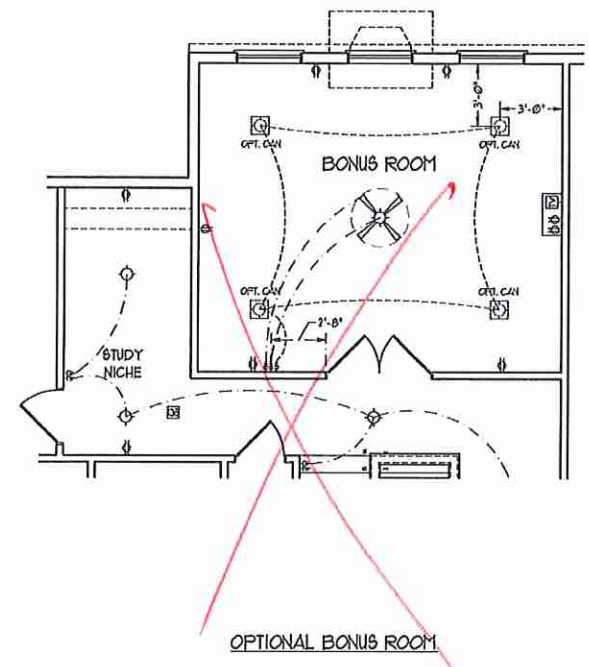
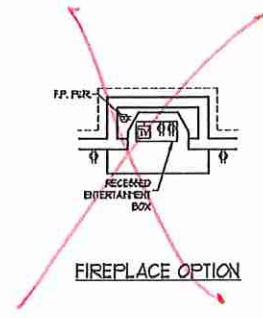
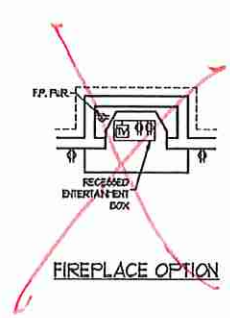


PRICES, PROMOTIONS, INCENTIVES, FEATURES, OPTIONS, FLOOR PLANS, ELEVATIONS, BEDDING, MATERIALS AND DIMENSIONS ARE SUBJECT TO CHANGE WITHOUT NOTICE AND MAY VARY IN ACTUAL CONSTRUCTION. ACTUAL POSITION OF HOUSE ON LOT IS TO BE DETERMINED BY THE PLANNING AND SURVEY DEPARTMENT. THESE PLANS AND DIMENSIONS ARE THE PROPERTY OF H&H HOMES. ANY USE, REPRODUCTION, MODIFICATION, OR CONSTRUCTION WITHOUT THE EXPRESS WRITTEN PERMISSION OF H&H HOMES IS PROHIBITED. SEE HOW-TO MAKE SURE YOU GET THE CORRECT DETAILS. COPYRIGHT © 2019 H&H HOMES

H&H HOMES, INC.
JACKSON

DATE: FEBRUARY 27, 2019
REV.: JANUARY 16, 2020
SCALE: 1/4"=1'-0"
DRAWN BY: WJG
ENGINEERED BY: WJF
REVIEWED BY: JES

SECOND FLOOR
ELECTRICAL
PLAN
E-2.1

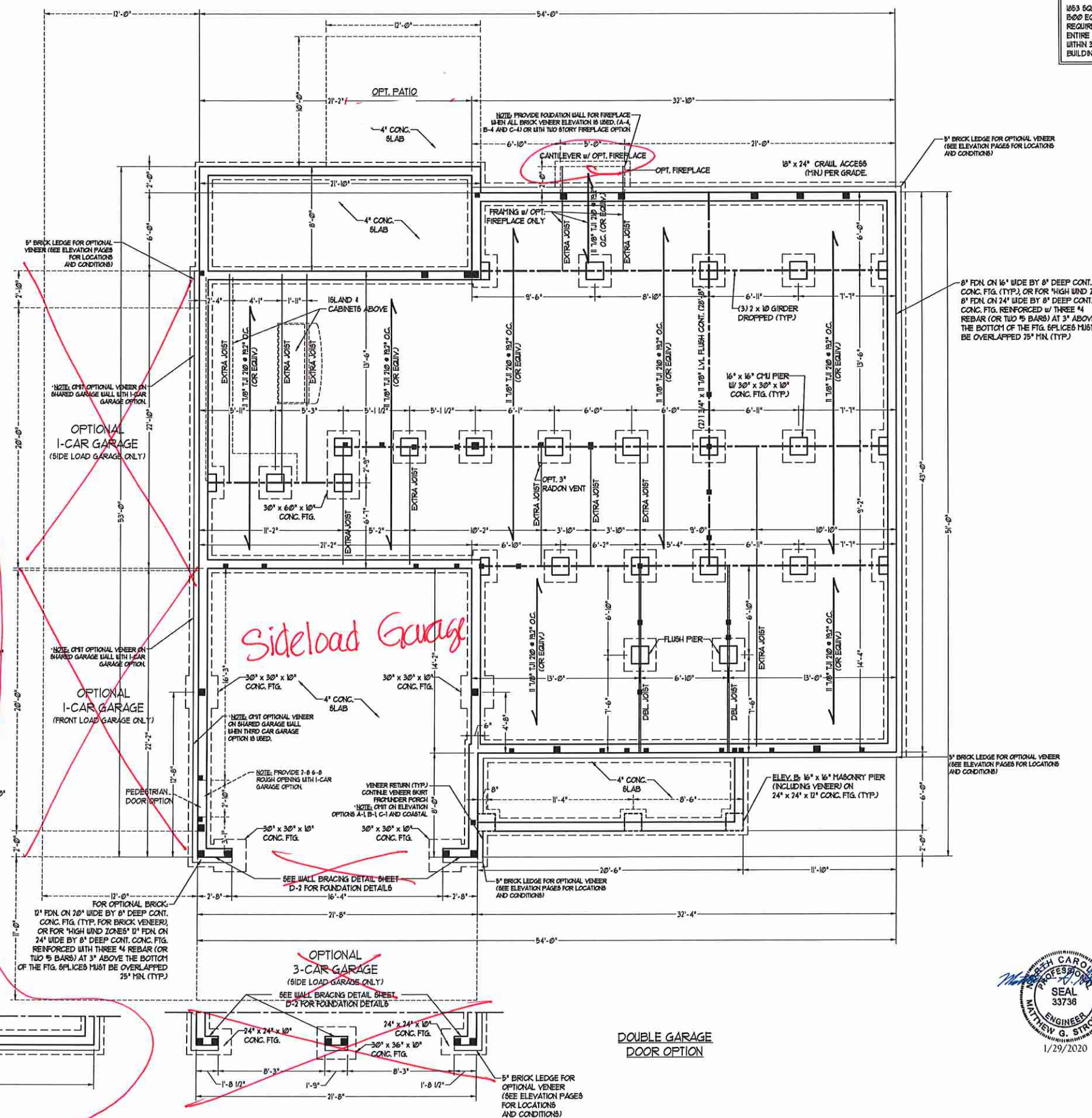


JTM

FOUNDATION VENTILATION CALCULATION
 1253 SQ. FT. OF CRAWL SPACE DIVIDED BY 1000 EQUALS 1.24 SQ. FT. OF NET FREE AREA REQUIRED. INSTALL 6 MIL POLY TO COVER ENTIRE CRAWL SPACE. LOCATE VENTS WITHIN 3'-0" OF EACH CORNER OF THE BUILDING TO PROVIDE CROSS-VENTILATION.

J.S. THOMPSON ENGINEERING, INC.
 606 WADE AVE., SUITE 104 RALEIGH, NC 27605
 PHONE: (919) 789-9919 FAX: (919) 789-9921
 N.C. LICENSE NO.: CT1733

JACKSON
 H&H HOMES, INC.



60 MPH ULTIMATE DESIGN WIND SPEED NOTES FOR LESS THAN 30' MEAN ROOF HEIGHT.

- ENGINEER'S SEAL APPLIES ONLY TO STRUCTURAL COMPONENTS. ENGINEER'S SEAL DOES NOT CERTIFY DIMENSIONAL ACCURACY OR ARCHITECTURAL LAYOUT INCLUDING ROOF SYSTEM.
- STRUCTURAL DESIGN PER NORTH CAROLINA RESIDENTIAL CODE, 2018 EDITION WITH SPECIAL CONSIDERATION TO CHAPTER 45 (HIGH WIND ZONES) FOR 60 MPH WINDS OF THE NORTH CAROLINA RESIDENTIAL CODE, 2018 EDITION.
- BUILDER IS TO PROVIDE FRAMING CONNECTIONS AS REQUIRED BY CHAPTER 45 (HIGH WIND ZONES) FOR 60 MPH WINDS OF THE NORTH CAROLINA RESIDENTIAL CODE, 2018 EDITION.
- FOUNDATION ANCHORAGE TO COMPLY WITH SECTION 4504 OF THE NORTH CAROLINA RESIDENTIAL CODE, 2018 EDITION.
- MEAN ROOF HEIGHT IS LESS THAN 30 FEET.
- WALL CLADDING DESIGNED FOR 4.43 PSF AND -30 PSF (-4. INDICATE POSITIVE / NEGATIVE PRESSURE (TYP)).
- ROOF CLADDING DESIGNED FOR 42.3 PSF AND -38 PSF FOR ROOF PITCHES 1/2 TO 0/12 AND 44 PSF AND -51 PSF FOR ROOF PITCHES 2/12 TO 1/12.
- 1/4" OSB SHEATHING IS REQUIRED ON ALL EXTERIOR WALLS.
- WALLS TO BE BRACED IN ACCORDANCE WITH SECTION 4503.10 OF THE NORTH CAROLINA RESIDENTIAL CODE, 2018 EDITION AND AS NOTED ON PLANS.
- ENERGY EFFICIENCY COMPLIANCE AND INSULATION VALUES OF THE BUILDING TO BE IN ACCORDANCE WITH CHAPTER 8 OF THE NRC, 2018 EDITION.

100 MPH ULTIMATE DESIGN WIND SPEED NOTES FOR LESS THAN 30' MEAN ROOF HEIGHT.

- ENGINEER'S SEAL APPLIES ONLY TO STRUCTURAL COMPONENTS. ENGINEER'S SEAL DOES NOT CERTIFY DIMENSIONAL ACCURACY OR ARCHITECTURAL LAYOUT INCLUDING ROOF SYSTEM.
- STRUCTURAL DESIGN PER NORTH CAROLINA RESIDENTIAL CODE, 2018 EDITION.
- INSTALL 1/2" ANCHOR BOLTS @ 6'-0" O.C. AND WITHIN 4'-0" FROM END OF EACH CORNER ANCHOR BOLTS MUST EXTEND A MINIMUM OF 1" INTO MASONRY OR CONCRETE. LOCATE BOLT WITH MIDDLE THIRD OF PLATE WIDTH.
- MEAN ROOF HEIGHT IS LESS THAN 30 FEET.
- EXTERIOR WALLS DESIGNED FOR 60 MPH WINDS.
- WALL CLADDING DESIGNED FOR 48.3 PSF AND -30 PSF (-4. INDICATE POSITIVE / NEGATIVE PRESSURE (TYP)).
- ROOF CLADDING DESIGNED FOR 44.2 PSF AND -38 PSF FOR ROOF PITCHES 1/2 TO 0/12 AND 46 PSF AND -56 PSF FOR ROOF PITCHES 2/12 TO 1/12.
- INSTALL 1/4" OSB SHEATHING ON ALL EXTERIOR WALLS OF ALL STORES IN ACCORDANCE WITH SECTION 4503.10 OF THE NRC, 2018 EDITION. SEE THE WALL BRACING NOTES AND DETAILS SHEET FOR MORE INFORMATION.
- ENERGY EFFICIENCY COMPLIANCE AND INSULATION VALUES OF THE BUILDING TO BE IN ACCORDANCE WITH CHAPTER 8 OF THE NRC, 2018 EDITION.
- REFER TO NOTES AND DETAIL SHEETS FOR ADDITIONAL STRUCTURAL INFORMATION.

STRUCTURAL NOTES:

- ALL FRAMING LUMBER TO BE 1/2 SFT (UNO). ALL TREATED LUMBER TO BE 1/2 SPT (LNO).
- INSTALL AN EXTRA OR DOUBLE JOIST UNDER WALLS PARALLEL TO FLOOR JOISTS WHERE NOTED ON THE PLANS.
- SQUARES DENOTE POINT LOADS WHICH REQUIRE SOLID BLOCKING TO GIRDER OR FOUNDATION.
- SHADED PIERS TO BE FILLED SOLID.
- INSTALL LADDER WIRE @ 16" O.C. TO SECURE MULTIPLE WITH THE FOUNDATION WALLS TOGETHER.
- REFER TO NOTES AND DETAIL SHEETS FOR ADDITIONAL STRUCTURAL INFORMATION.

Matthew G. Strother
 NORTH CAROLINA PROFESSIONAL ENGINEER
 SEAL 33736
 ENGINEER
 1/29/2020

DATE: JANUARY 27, 2020
 SCALE: 1/4" = 1'-0"
 DRAWN BY: H&H
 ENGINEERED BY: WFR

SHEET 1 OF 12
 S-1.1a
 CRAWL FOUNDATION PLAN

TABLE R6-02.15
MINIMUM NUMBER OF FULL HEIGHT STUDS
AT EACH END OF HEADERS IN EXTERIOR WALLS

HEADER SPAN (FEET)	MAXIMUM STUD SPACING (INCHES) (PER TABLE R6-02.15)	
	16"	24"
UP TO 3'	1	1
4'	2	1
6'	3	2
8'	5	3
10'	6	4

LINTEL SCHEDULE FOR
BRICK/NATURAL STONE SUPPORT

LENGTH (FT.)	SIZE OF LINTEL
UP TO 4 FT.	L 3 1/2 x 3 1/2 x 1/4
4-8	L 5 x 3 1/2 x 5/16 LLY
8 AND GREATER	L 6 x 4 x 5/16 LLY

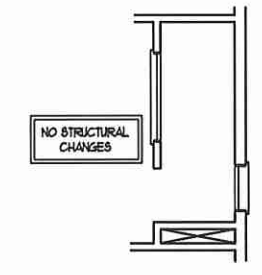
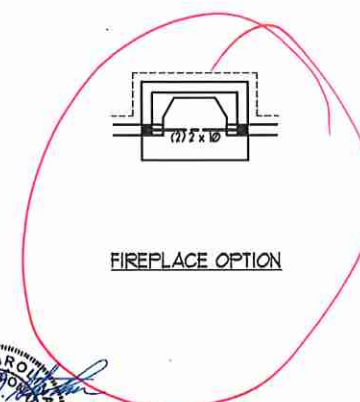
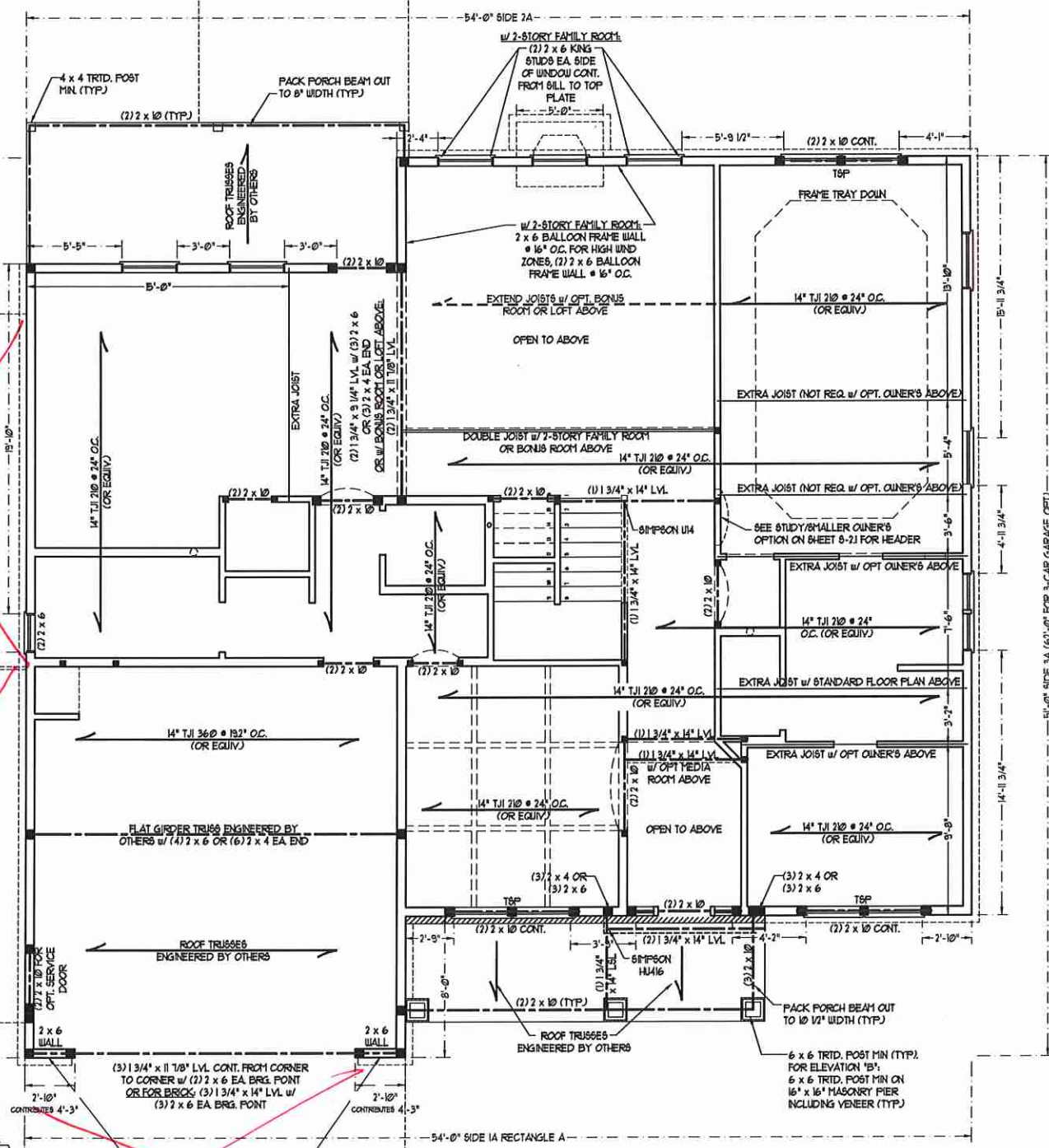
BRICK SUPPORT NOTES:

- LINTEL SCHEDULE APPLIES TO ALL OPENINGS IN BRICK VENEER (UNO) SEE ARCH. DRAWG. FOR SIZE AND LOCATION OF OPENINGS.
- (LLV) = LONG LEG VERTICAL
- LENGTH = CLEAR OPENING
- EMBED ALL ANGLE IRONS MIN. 4" EACH SIDE INTO VENEER TO PROVIDE BEARING.
- FOR ALL HEADERS 8'-0" AND GREATER IN LENGTH, ATTACH STEEL ANGLE TO HEADER W/ 1/2" LAG SCREWS @ 12" O.C. STAGGERED.
- FOR ALL BRICK SUPPORT = ROOF LINES, FASTEN (2) 2 x 10 BLOCKING BETWEEN STUDS w/ (4) 10d NAILS PER FLY, FASTEN A 6" x 4" x 5/16" STEEL ANGLE TO (2) 2 x 10 BLOCKING w/ (2) 1/2" LAG SCREWS @ 12" O.C. STAGGERED. SEE SECTION R103.021 OF THE 2018 NCRS FOR ADDITIONAL BRICK SUPPORT INFORMATION.
- PRECAST REINFORCED CONCRETE LINTELS ENGINEERED BY OTHERS MAY BE USED IN LIEU OF STEEL LINTELS.

STRUCTURAL NOTES:

- ALL FRAMING LUMBER TO BE #2 SPF (UNO). ALL TREATED LUMBER TO BE #1 SPF (UNO).
- ALL LOAD BEARING HEADERS TO BE (2) 2 x 10 (UNO).
- INSTALL AN EXTRA JOIST UNDER WALLS PARALLEL TO FLOOR JOISTS WHERE NOTED ON THE PLANS.
- WINDOW AND DOOR HEADERS TO BE SUPPORTED W/ (1) JACK STUD AND (1) KING STUD EA. END (UNO). SEE TABLE R6-02.15 FOR ADDITIONAL KING STUD REQUIREMENTS.
- SQUARES DENOTE POINT LOADS WHICH REQUIRE SOLID BLOCKING TO GIRDER OR FOUNDATION. ALL SQUARES TO BE (2) STUDS (UNO).
- FOR HIGH WIND ZONES, ALL EXTERIOR WALLS TO BE SHEATHED WITH 1/8" OSB SHEATHING WITH JOINTS BLOCKED AND SECURED WITH 8d NAILS AT 3" O.C. ALONG EDGES AND 6" O.C. IN THE FIELD.
- FOR HIGH WIND ZONES, SECURE ALL EXTERIOR WALL SHEATHING PANELS TO DOUBLE TOP PLATES, BANDS, JOISTS, AND GIRDERS WITH (2) ROWS OF 8d NAILS STAGGERED AT 3" O.C. PANELS SHALL EXTEND 12" BEYOND CONSTRUCTION JOINTS AND SHALL OVERLAP GIRDERS AND DOUBLE SILL PLATES THEIR FULL DEPTH.
- ALL 4 x 4 POSTS SHALL BE ANCHORED TO SLABS w/ SIMPSON A308 POST BASES (OR EQUAL) AND 6 x 6 POSTS w/ A3086 POST BASES (OR EQUAL) (UNO). ALL 4 x 4 AND 6 x 6 POSTS TO BE INSTALLED WITH 1000 LB CAPACITY UPLIFT CONNECTORS AT TOP (UNO).
- FOR FIBERGLASS, ALUMINUM, OR COLUMN ENG. BY OTHERS, SECURE TO SLAB w/ (2) METAL ANGLES USING 2" CONC. SCREWS. FASTEN ANGLES TO COLUMNS w/ 1/4" THROUGH BOLTS w/ NUTS AND WASHERS. LOCATE ANGLES ON OPPOSITE SIDES OF COLUMN. THROUGH BOLTS MUST BE INSTALLED PRIOR TO SETTING COLUMN.
- REFER TO NOTES AND DETAIL SHEETS FOR ADDITIONAL STRUCTURAL INFORMATION.

*TSP INDICATES TRIPLE STUD POCKET BETWEEN WINDOW UNITS.



BRACED WALL DESIGN

RECTANGLE A	RECTANGLE B
SIDE 1A (FRONT LOAD) METHOD: CS-USP/FF TOTAL REQUIRED LENGTH: 18.95' TOTAL PROVIDED LENGTH: 22'	SIDE 1B METHOD: FVCS-USP TOTAL REQUIRED LENGTH: 456" TOTAL PROVIDED LENGTH: 6'
SIDE 2A METHOD: CS-USP TOTAL REQUIRED LENGTH: 18.95' TOTAL PROVIDED LENGTH: 21.6'	SIDE 2B METHOD: CS-USP TOTAL REQUIRED LENGTH: 456" TOTAL PROVIDED LENGTH: 10'
SIDE 3A METHOD: CS-USP TOTAL REQUIRED LENGTH: 19.9' TOTAL PROVIDED LENGTH: 35.9'	SIDE 3B / SIDE 4A CUMULATIVE METHOD: CS-USP/GB TOTAL REQUIRED LENGTH: 731" TOTAL PROVIDED LENGTH: 761'
SIDE 4A (SIDE LOAD) METHOD: CS-USP/FF TOTAL REQUIRED LENGTH: 19.9' TOTAL PROVIDED LENGTH: 22.79'	SIDE 4B METHOD: CS-USP TOTAL REQUIRED LENGTH: 339" TOTAL PROVIDED LENGTH: 558"

- BRACED WALL DESIGN NOTES:
- BRACED WALL DESIGN PER SECTION R6-02.10 OF THE NCRS 2018 EDITION.
 - CS-USP REFERS TO 'CONTINUOUS SHEATHING - WOOD STRUCTURAL PANELS'. CONTRACTOR IS TO INSTALL 1/8" OSB ON ALL EXTERIOR WALLS ATTACHED W/ 8d NAILS SPACED 6" O.C. ALONG PANEL EDGES AND 12" O.C. IN THE FIELD.
 - GB REFERS TO 'GYPSUM BOARD'. CONTRACTOR IS TO INSTALL 1/2" (MIN) GYPSUM WALL BOARD WHERE NOTED ON THE PLANS. FASTEN GB WITH 1 1/4" SCREWS OR 1 5/8" NAILS SPACED 12" O.C. ALONG PANEL EDGES AND IN THE FIELD INCLUDING TOP AND BOTTOM PLATES.
 - BRACED WALL DESIGN APPLIED IN WIND ZONES UP TO 130 MPH. FOR HIGH WIND ZONES, BRACE WALLS ARE TO BE CONSTRUCTED IN ACCORDANCE WITH CHAPTER 45 OF THE NCRS 2018 EDITION. SEE NOTES AND DETAIL SHEETS FOR ADDITIONAL BRACED WALL INFORMATION.

NOTE: ALL EXTERIOR WALLS AND ATTIC WALLS ARE TO BE 2 x 6 @ 16" O.C. (UNO). 2 x 4 @ 16" O.C. EXTERIOR WALLS MAY BE CONSTRUCTED IN LIEU OF 2 x 6 WALLS (UNO). ALL INTERIOR LOAD BEARING WALLS ARE TO BE 2 x 4 @ 16" O.C. (UNO) AND NON-LOAD BEARING INTERIOR WALLS ARE TO BE 2 x 4 @ 24" O.C. (UNO).

J.S. THOMPSON ENGINEERING, INC.
606 WADE AVE., SUITE 104 RALEIGH, NC 27605
PHONE: (919) 789-9919 FAX: (919) 789-9921
N.C. LICENSE NO.: CT1733

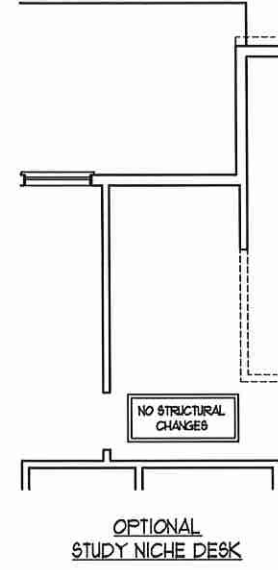
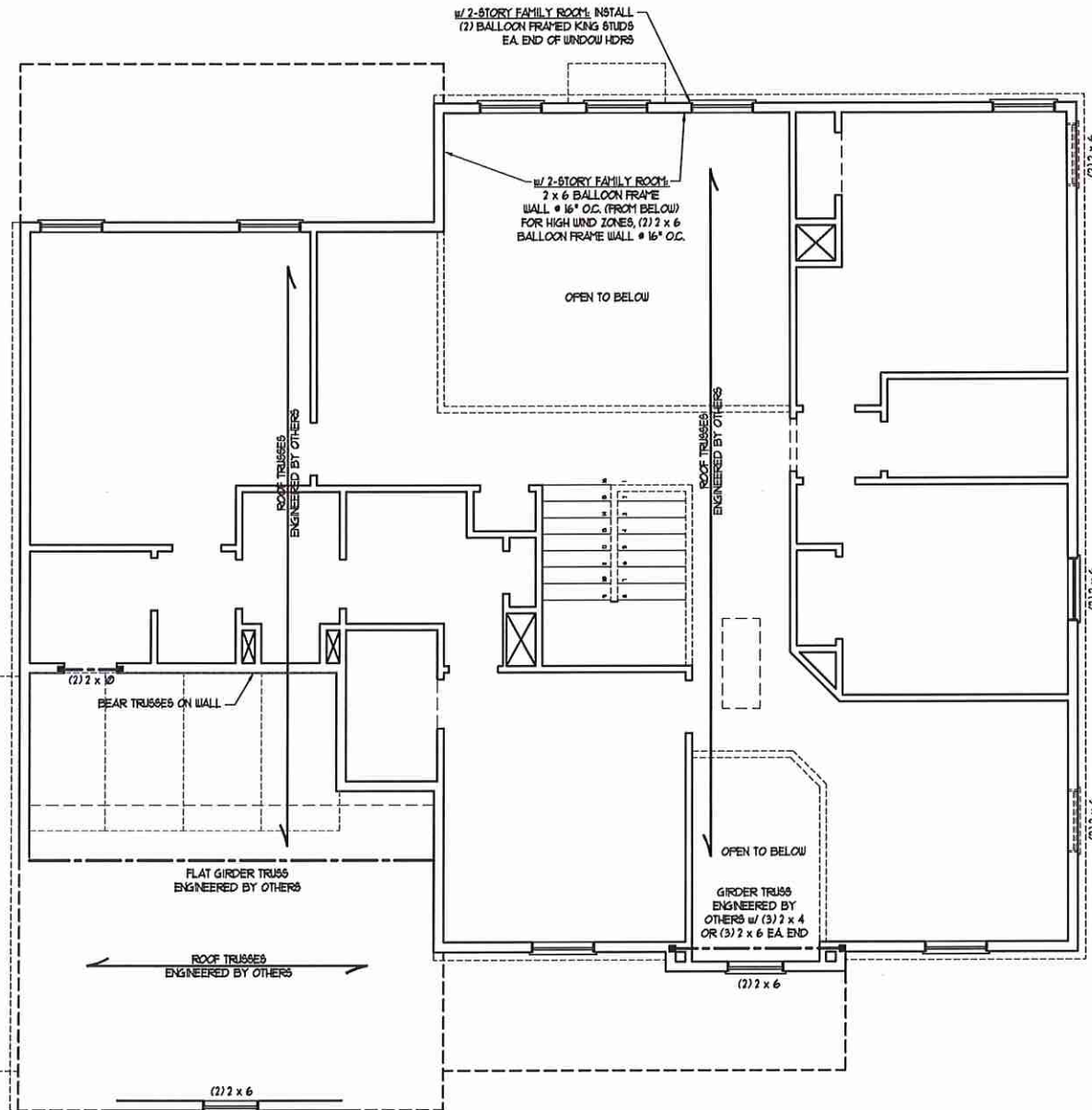
JACKSON H&H HOMES, INC.

DATE: JANUARY 27, 2020
SCALE: 1/4" = 1'-0"
DRAWN BY: H&H
ENGINEERED BY: WFR

SHEET 7 OF 12
S-2a
SECOND FLOOR FRAMING PLAN

- BRACED WALL DESIGN NOTES:**
- BRACED WALL DESIGN PER SECTION R602.10 OF THE NRC 2018 EDITION.
 - CS-WSP REFERS TO "CONTINUOUS SHEATHING - WOOD STRUCTURAL PANELS" CONTRACTOR IS TO INSTALL 1/8" OSB ON ALL EXTERIOR WALLS ATTACHED w/ 8d NAILS SPACED 6" O.C. ALONG PANEL EDGES AND 12" O.C. IN THE FIELD.
 - GB REFERS TO "GYPSUM BOARD" CONTRACTOR IS TO INSTALL 1/2" (MIN) GYPSUM WALL BOARD WHERE NOTED ON THE PLANS. FASTEN GB WITH 1 1/4" SCREWS OR 1 5/8" NAILS SPACED 1" O.C. ALONG PANEL EDGES AND IN THE FIELD INCLUDING TOP AND BOTTOM PLATES.
 - BRACED WALL DESIGN APPLIED IN WIND ZONES UP TO 130 MPH. FOR HIGH WIND ZONES, BRACE WALLS ARE TO BE CONSTRUCTED IN ACCORDANCE WITH CHAPTER 15 OF THE NRC 2018 EDITION.
 - SEE NOTES AND DETAIL SHEETS FOR ADDITIONAL BRACED WALL INFORMATION.

- NOTE:**
- PER SECTION R602.10.3.2 OF THE 2018 NRC, THE AMOUNT OF BRACING ON THE SECOND FLOOR EXCEEDS THE AMOUNT REQUIRED FOR THE FIRST FLOOR AND NO BRACED WALL ANALYSIS IS REQUIRED.
 - SHEATH ALL EXTERIOR WALLS WITH 1/8" OSB SHEATHING ATTACHED WITH 8d NAILS AT 6" O.C. ALONG PANEL EDGES AND 12" O.C. IN THE FIELD.



LINTEL SCHEDULE FOR BRICK/NATURAL STONE SUPPORT

LENGTH (FT.)	SIZE OF LINTEL
UP TO 4 FT.	L 3 1/2 x 3 1/2 x 1/4
4-8	L 5 x 3 1/2 x 5/16 LLV
8 AND GREATER	L 6 x 4 x 5/16 LLV

- BRICK SUPPORT NOTES:**
- LINTEL SCHEDULE APPLIES TO ALL OPENINGS IN BRICK VENEER (UNO). SEE ARCH DETAILS FOR SIZE AND LOCATION OF OPENINGS.
 - (LLV) = LONG LEG VERTICAL
 - LENGTH + CLEAR OPENING
 - EMBED ALL ANGLE IRONS MIN. 4" EACH SIDE INTO VENEER TO PROVIDE BEARING.
 - FOR ALL HEADERS 8"-Ø" AND GREATER IN LENGTH, ATTACH STEEL ANGLE TO HEADER w/ 1/2" LAG SCREWS @ 12" O.C. STAGGERED.
 - FOR ALL BRICK SUPPORT @ ROOF LINES, FASTEN (2) 2 x 10 BLOCKING BETWEEN STUDS w/ (4) 10d NAILS PER PLY, FASTEN A 6" x 4" x 5/16" STEEL ANGLE TO (2) 2 x 10 BLOCKING w/ (2) 1/2" LAG SCREWS @ 12" O.C. STAGGERED. SEE SECTION R103.B.2) OF THE 2018 NRC FOR ADDITIONAL BRICK SUPPORT INFORMATION.
 - PRECAST REINFORCED CONCRETE LINTELS ENGINEERED BY OTHERS MAY BE USED IN LIEU OF STEEL LINTELS.

TABLE R602.15
MINIMUM NUMBER OF FULL HEIGHT STUDS AT EACH END OF HEADERS IN EXTERIOR WALLS

HEADER SPAN (FEET)	MAXIMUM STUD SPACINGS (INCHES) (PER TABLE R602.15)	
	16	24
UP TO 3'	1	1
4'	2	1
8'	3	2
12'	5	3
16'	6	4

NOTE: ALL EXTERIOR WALLS AND ATTIC WALLS ARE TO BE 2 x 6 @ 16" O.C. (UNO). 2 x 4 @ 16" O.C. EXTERIOR WALLS MAY BE CONSTRUCTED IN LIEU OF 2 x 6 WALLS (UNO). ALL INTERIOR LOAD BEARING WALLS ARE TO BE 2 x 4 @ 16" O.C. (UNO) AND NON-LOAD BEARING INTERIOR WALLS ARE TO BE 2 x 4 @ 24" O.C. (UNO).

- STRUCTURAL NOTES:**
- ALL FRAMING LUMBER TO BE 1/2 SFF (UNO).
 - ALL LOAD BEARING HEADERS TO BE (2) 2 x 10 (UNO).
 - WINDOW AND DOOR HEADERS TO BE SUPPORTED w/ (1) JACK STUD AND (1) KING STUD EA. END (UNO). SEE TABLE R602.15 FOR ADDITIONAL KING STUD REQUIREMENTS.
 - FOR HIGH WIND ZONES, ALL EXTERIOR WALLS TO BE SHEATHED WITH 1/8" OSB SHEATHING WITH JOINTS BLOCKED AND SECURED WITH 8d NAILS AT 3" O.C. ALONG EDGES AND 6" O.C. IN THE FIELD.
 - FOR HIGH WIND ZONES, SECURE ALL EXTERIOR WALL SHEATHING PANELS TO DOUBLE TOP PLATES, BANDS, JOISTS, AND GIRDERS WITH (2) ROWS OF 8d NAILS STAGGERED AT 3" O.C. PANELS SHALL EXTEND 12" BEYOND CONSTRUCTION JOINTS AND SHALL OVERLAP GIRDERS AND DOUBLE SILL PLATES THEIR FULL DEPTH.
 - SQUARES DENOTE POINT LOADS WHICH REQUIRE SOLID BLOCKING TO GIRDER OR FOUNDATION. ALL SQUARES TO BE (2) STUDS (UNO).
 - REFER TO NOTES AND DETAIL SHEETS FOR ADDITIONAL STRUCTURAL INFORMATION.

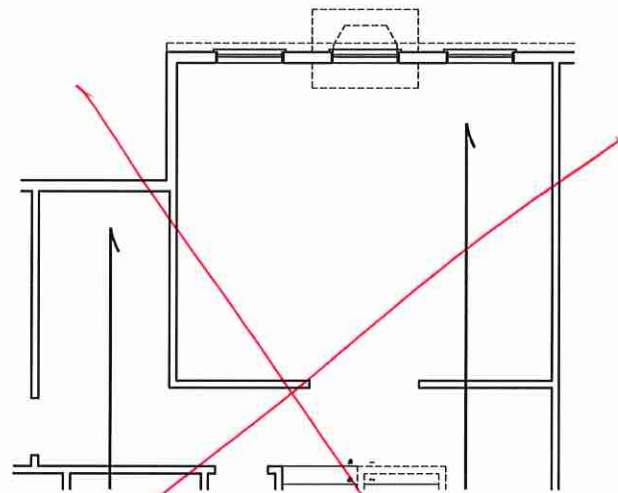
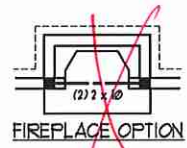


J.S. THOMPSON ENGINEERING, INC.
606 WADE AVE., SUITE 104 RALEIGH, NC 27605
PHONE: (919) 789-9919 FAX: (919) 789-9921
N.C. LICENSE NO.: C-1733

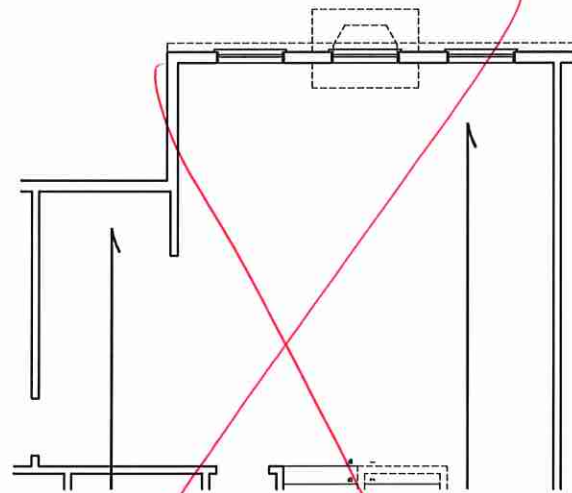
JACKSON
H&H HOMES, INC.

DATE: JANUARY 27, 2020
SCALE: 1/4" = 1'-0"
DRAWN BY: H&H
ENGINEERED BY: WFB

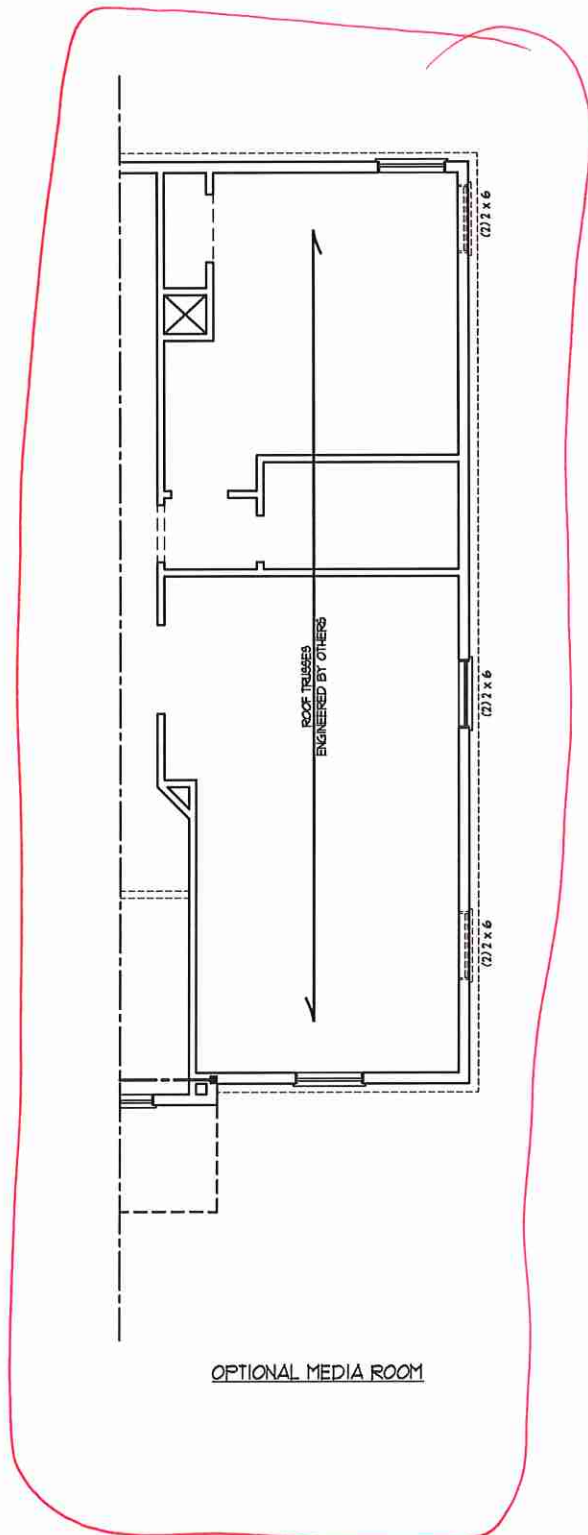
SHEET 9 OF 12
S-3a
CEILING FRAMING PLAN



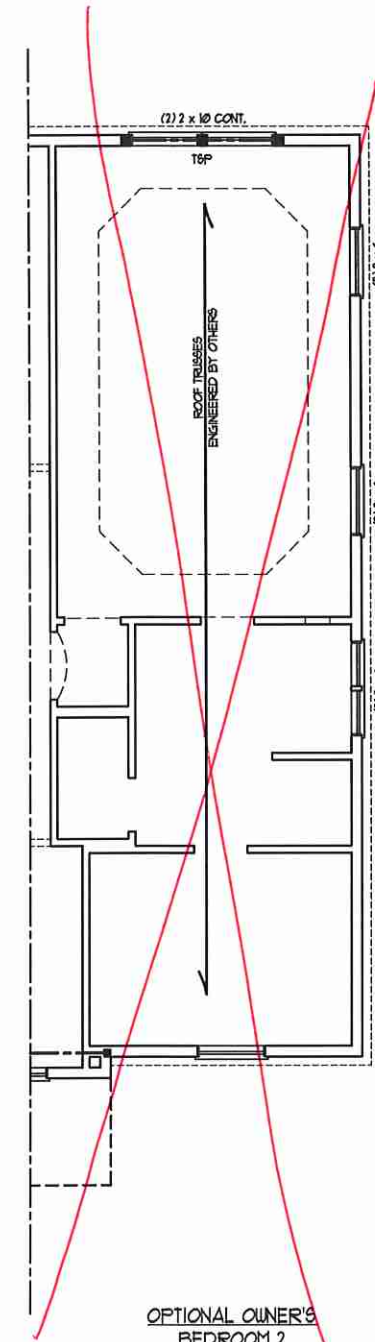
OPTIONAL BONUS ROOM
(ADD 214 SQ. FT.)



OPTIONAL LOFT
(ADD 214 SQ. FT.)



OPTIONAL MEDIA ROOM



OPTIONAL OWNER'S
BEDROOM 2

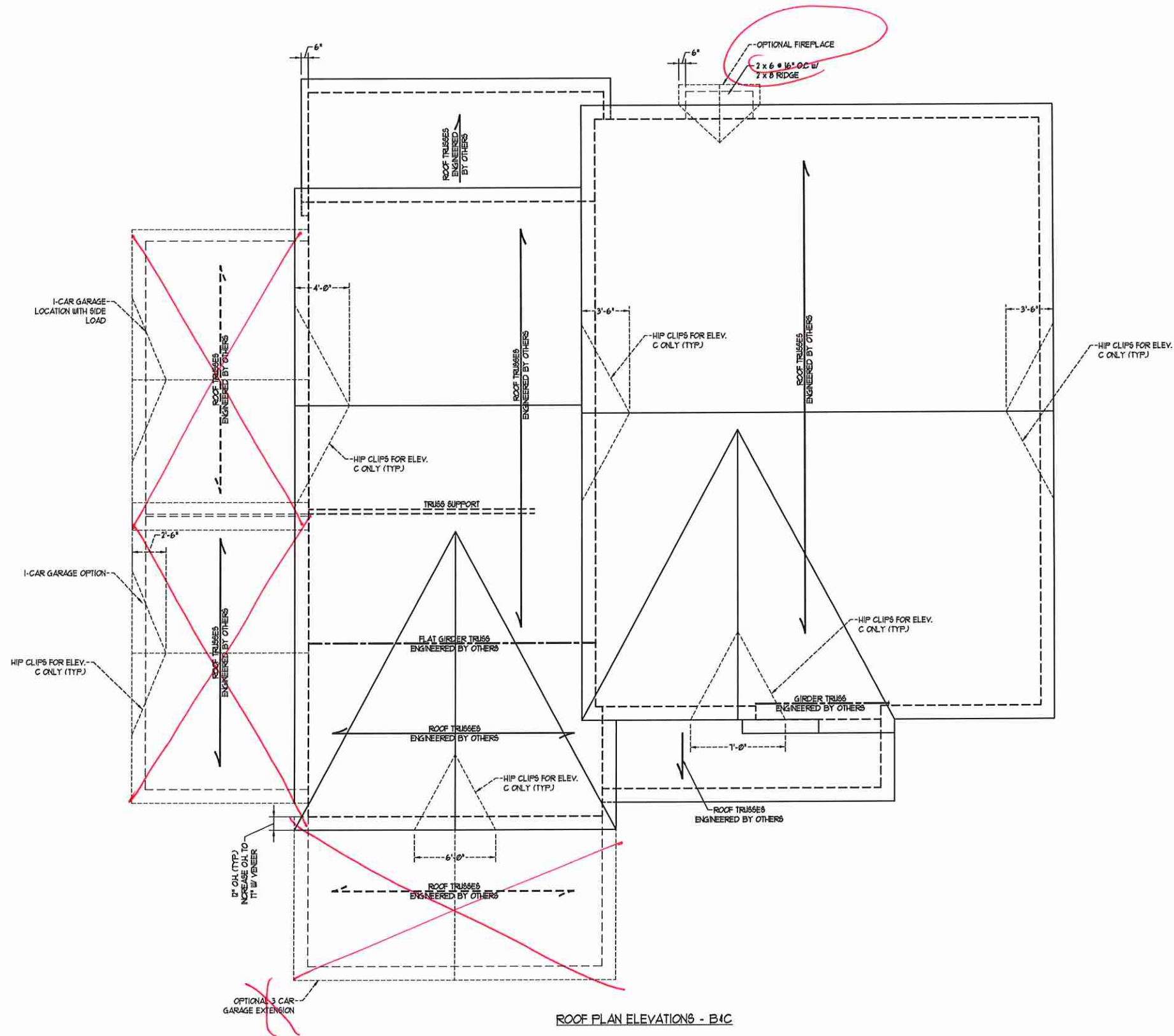
**J.S. THOMPSON
ENGINEERING, INC.**
606 WADE AVE., SUITE 104 RALEIGH, NC 27605
PHONE: (919) 789-9919 FAX: (919) 789-9921
N.C. LICENSE NO.: C1733

JACKSON
H&H HOMES, INC.

DATE: JANUARY 27, 2020
SCALE: 1/4" = 1'-0"
DRAWN BY: H&H
ENGINEERED BY: WTB



SHEET 10 OF 12
S-3b
CEILING FRAMING
PLAN



BRICK SUPPORT NOTE:

1. FASTEN (2) 2 x 10 BLOCKING BETWEEN WALL STUDS w/ (4) Dd NAILS PER PLY. FASTEN A 6" x 4" x 5/16" STEEL ANGLE TO (2) 2 x 10 BLOCKING w/ (2) 1/2" LAG SCREWS @ 12" O.C. STAGGERED. SEE SECTION R103.02.1 OF THE 2018 NRC FOR ADDITIONAL BRICK SUPPORT INFORMATION.
2. WHERE ROOF SLOPES EXCEED 1:10, INSTALL 3" x 3" x 1/4" STEEL PLATE STOPS AT 24" O.C. PER SECTION R103.02.1 OF THE NORTH CAROLINA RESIDENTIAL CODE, 2018 EDITION.

STRUCTURAL NOTES:

1. ALL FRAMING LUMBER TO BE #2 SFF (NO).
2. CIRCLES DENOTE (3) 2 x 4 POSTS FOR ROOF SUPPORT.
3. FRAME DORMER WALLS ON TOP OF DOUBLE OR TRIPLE RAFTERS.
4. HIP SPLICES ARE TO BE SPACED A MIN. OF 8'-0". FASTEN MEMBERS WITH THREE ROWS OF Dd NAILS @ 16" O.C. (TYP.)
5. STICK FRAME OVER-FRAMED ROOF SECTIONS w/ 2 x 8 RIDGES, 2 x 6 RAFTERS @ 16" O.C. AND FLAT 2 x 10 VALLEYS OR USE VALLEY TRUSSES.
6. FASTEN FLAT VALLEYS TO RAFTERS OR TRUSSES WITH SIMPSON H2.5A HURRICANE TIES @ 24" O.C. MAX. PASS HURRICANE TIES THROUGH NOTCH IN ROOF SHEATHING. EACH RAFTER IS TO BE FASTENED TO THE FLAT VALLEY WITH A MIN. OF (6) Dd TOE NAILS.
7. REFER TO SECTION R802.11 OF THE 2018 NRC FOR REQUIRED UPLIFT RESISTANCE AT RAFTERS AND TRUSSES.
8. REFER TO NOTES AND DETAIL SHEETS FOR ADDITIONAL STRUCTURAL INFORMATION.

J.S. THOMPSON ENGINEERING, INC.
 606 WADE AVE., SUITE 104 RALEIGH, NC 27605
 PHONE: (919) 789-9919 FAX: (919) 789-9921
 N.C. LICENSE NO. C1733

JACKSON
 H&H HOMES, INC.



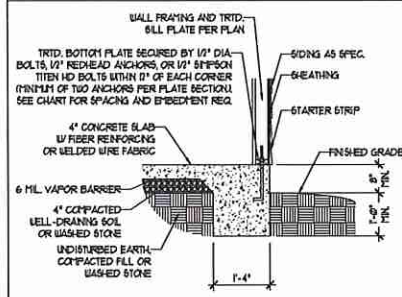
DATE: JANUARY 27, 2020
 SCALE: 1/4" = 1'-0"
 DRAWN BY: H&H
 ENGINEERED BY: WFB

SHEET: 12 OF 12
 S4b
 ROOF FRAMING PLAN

ROOF PLAN ELEVATIONS - B4C

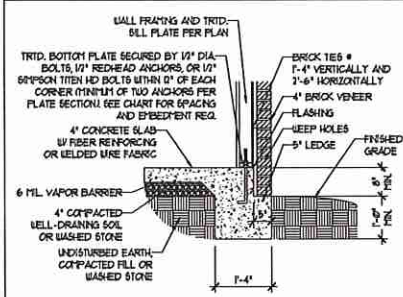
MONOLITHIC SLAB DETAILS

DETAIL 1



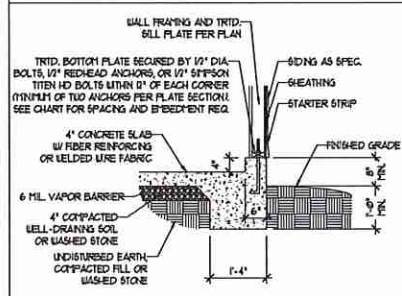
TYPICAL SLAB DETAIL

DETAIL 2



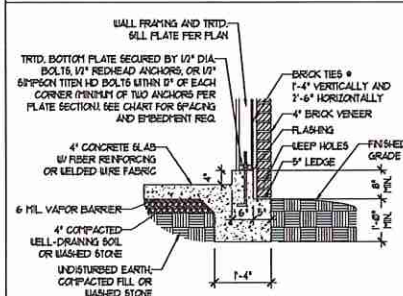
BRICK VENEER DETAIL

DETAIL 3



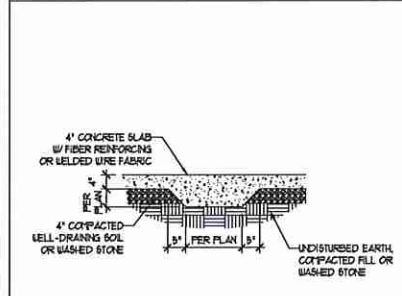
GARAGE CURB DETAIL

DETAIL 4



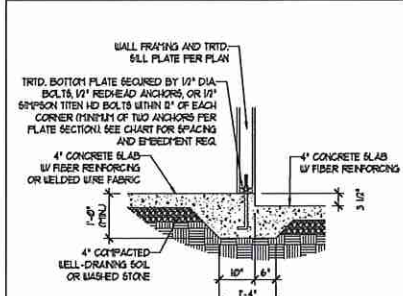
GARAGE CURB BRICK LEDGE DETAIL

DETAIL 5



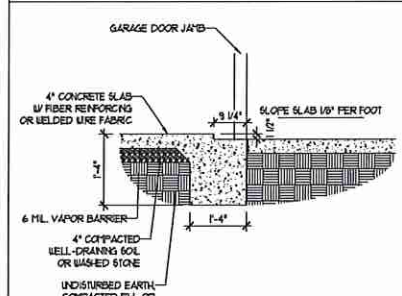
THICKENED SLAB DETAIL

DETAIL 6



STEP IN GARAGE DETAIL

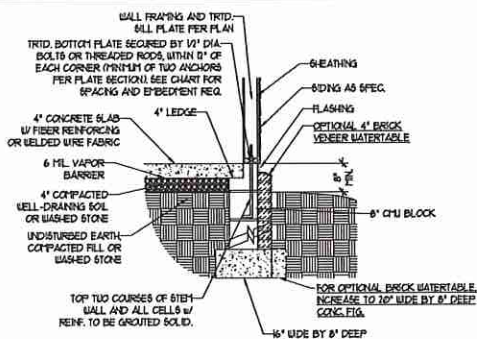
DETAIL 7



SLAB AT GARAGE DOOR DETAIL

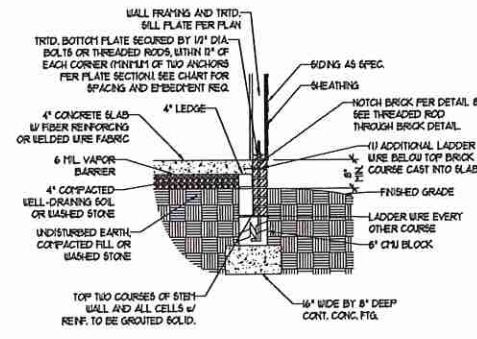
STEMWALL DETAILS

DETAIL 1



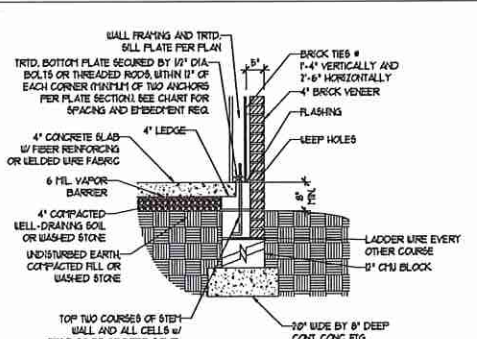
TYPICAL STEM WALL DETAIL
(w/ OPTIONAL WATERTABLE)

OPTIONAL DETAIL 1



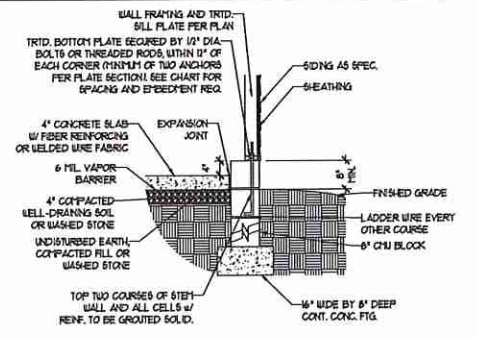
OPTIONAL STEM WALL DETAIL

DETAIL 2



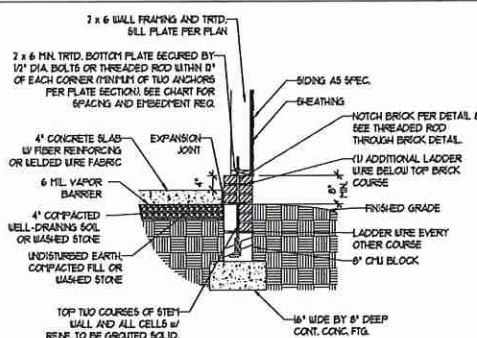
TYPICAL STEM WALL FND. w/ BRICK DETAIL

DETAIL 3



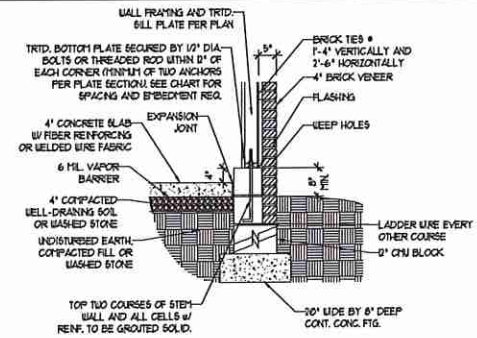
TYPICAL STEM WALL FND. DETAIL w/ CURB @ GARAGE

OPTIONAL DETAIL 3



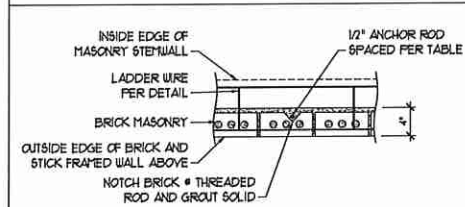
OPTIONAL STEM WALL FND. DETAIL w/ CURB @ GARAGE

DETAIL 4



TYPICAL STEM WALL FND. DETAIL w/ BRICK AND CURB @ GARAGE

DETAIL 8



THREADED ROD THROUGH BRICK MASONRY

MASONRY STEMWALL SPECIFICATIONS

WALL HEIGHT (FEET)	MASONRY WALL TYPE			
	8" CMU	4" BRICK AND 4" CMU	4" BRICK AND 8" CMU	12" CMU
2 AND BELOW	UNGROUTED	GROUT SOLID	UNGROUTED	UNGROUTED
3	UNGROUTED	GROUT SOLID	UNGROUTED	UNGROUTED
4	GROUT SOLID	GROUT SOLID w/ #4 REBAR @ 48" O.C.	GROUT SOLID	GROUT SOLID w/ #4 REBAR @ 64" O.C.
5	GROUT SOLID w/ #4 REBAR @ 36" O.C.	NOT APPLICABLE	GROUT SOLID w/ #4 REBAR @ 36" O.C.	GROUT SOLID w/ #4 REBAR @ 64" O.C.
6	GROUT SOLID w/ #4 REBAR @ 24" O.C.	NOT APPLICABLE	GROUT SOLID w/ #4 REBAR @ 24" O.C.	GROUT SOLID w/ #4 REBAR @ 64" O.C.
7 AND GREATER	ENGINEERED DESIGN BASED ON SITE CONDITIONS			

STRUCTURAL NOTES:

- WALL HEIGHT MEASURED FROM TOP OF FOOTING TO TOP OF THE WALL.
- THE MULTIPLE WYTHES TOGETHER WITH LADDER WIRE AT 16" O.C. VERTICALLY.
- CHART APPLICABLE FOR HOUSE FOUNDATION ONLY. CONSULT ENGINEER FOR DESIGN OF GARAGE FOUNDATION NOT COMMON TO HOUSE.
- BACKFILL OF CLEAN #1 / #1 WASHED STONE IS ALLOWABLE.
- BACKFILL OF WELL DRAINED OR SAND - GRAVEL MIXTURE SOILS (45 PPF/FT BELOW GRADE) CLASSIFIED AS GROUP 1 ACCORDING TO UNIFIED SOILS CLASSIFICATION SYSTEM IN ACCORDANCE WITH TABLE R402.1 OF THE 2018 INTERNATIONAL RESIDENTIAL CODE ARE ALLOWABLE.
- PREP SLAB PER R506.21 AND R506.22 BASE OF THE 2018 INTERNATIONAL RESIDENTIAL CODE. MINIMUM 24" LAP SPLICE LENGTH.
- LOCATE REBAR IN CENTER OF FOUNDATION WALL.
- WHERE REQUIRED, FILL BLOCK SOLID WITH TYPE "S" MORTAR OR 3000 PSI GROUT. USE OF "LOW LIFT GROUTING" METHOD REQUIRED WHEN FILLING WALLS WITH GROUT AT HEIGHTS OF 5' AND GREATER.

ANCHOR SPACING AND EMBEDMENT

WIND ZONE	120 MPH	130 MPH
SPACING	6'-0" O.C.	4'-0" O.C.
EMBEDMENT	1"	15" INTO MASONRY 1" INTO CONCRETE

J.S. THOMPSON ENGINEERING, INC.
606 WADE AVE., SUITE 104 RALEIGH, NC 27605
PHONE: (919) 789-9919 FAX: (919) 789-9921
N.C. LICENSE NO.: C1733

120 MPH - 130 MPH ULTIMATE DESIGN WIND SPEED
FOUNDATION DETAILS

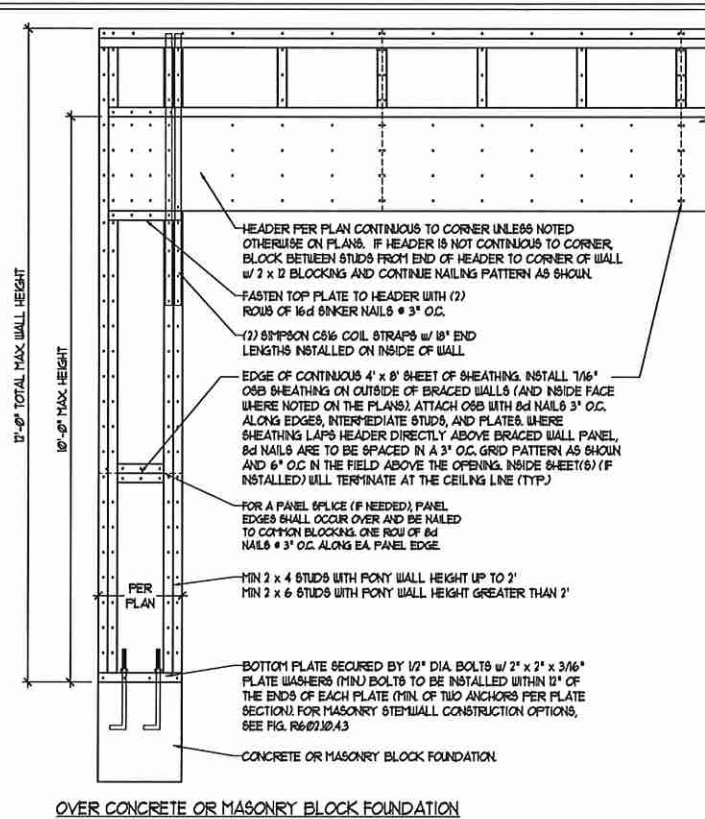
DATE: NOVEMBER 14, 2018
SCALE: NTS
DRAWN BY: JST
ENGINEERED BY: JES



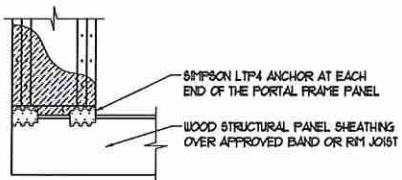
D-1
FOUNDATION DETAILS

GENERAL WALL BRACING NOTES:

1. WALL BRACING DESIGNED IN ACCORDANCE WITH CHAPTER 6 OF THE 2018 NC RESIDENTIAL BUILDING CODE (NRC). TABLES AND FIGURES REFERENCED ARE FROM THE 2018 NRC.
2. SEE THIS SHEET FOR GENERAL DETAILS. REFER TO THE 2018 NRC FOR ADDITIONAL INFORMATION AS NEEDED.
3. SEE STRUCTURAL SHEETS FOR BRACED WALL LOCATIONS, DIMENSIONS, HOLD DOWN TYPE AND LOCATIONS, BRACED WALL LINE KEY WITH WALL DESIGN SUMMARY OF REQUIRED/PROVIDED TOTALS FOR EACH WALL LINE AND ANY SPECIAL NOTES OR REQUIREMENTS.
4. ALL EXTERIOR WALLS ARE TO BE SHEATHED WITH CS-WSF IN ACCORDANCE WITH SECTION R602.10.3 UNLESS NOTED OTHERWISE.
5. ALL EXTERIOR AND INTERIOR WALLS TO HAVE 1/2" GYPSUM INSTALLED. WHEN NOT USING METHOD 'GB', GYPSUM TO BE FASTENED PER TABLE R101.3.5. METHOD GB TO BE FASTENED PER TABLE R602.10.1.
6. CS-WSF REFERS TO THE "CONTINUOUS SHEATHING - WOOD STRUCTURAL PANEL 5/8" WALL BRACING METHOD. 1/8" OSB SHEATHING IS TO BE INSTALLED ON ALL EXTERIOR WALLS ATTACHED w/ 6d COMMON NAILS OR 8d (2 1/2" LONG x 0.131" DIAMETER) NAILS SPACED 6" O.C. ALONG PANEL EDGES AND 12" O.C. IN THE FIELD (UNO.).
7. GB REFERS TO THE "GYPSUM BOARD" WALL BRACING METHOD. 1/2" (MIN) GYPSUM WALL BOARD IS TO BE INSTALLED ON BOTH SIDES OF THE BRACED WALL FASTENED WITH 1 1/4" SCREWS OR 1 5/8" NAILS SPACED 7" O.C. ALONG PANEL EDGES INCLUDING TOP AND BOTTOM PLATES AND INTERMEDIATE SUPPORTS (UNO.). VERIFY ALL FASTENER OPTIONS FOR 1/2" AND 5/8" GYPSUM PRIOR TO CONSTRUCTION. FOR INTERIOR FASTENER OPTIONS SEE TABLE R101.3.5. FOR EXTERIOR FASTENER OPTIONS SEE TABLE R602.3(1). EXTERIOR GB TO BE INSTALLED VERTICALLY.
8. REQUIRED BRACED WALL LENGTH FOR EACH SIDE OF THE CIRCUMSCRIBED RECTANGLE ARE INTERPOLATED PER TABLE R602.10.3. METHOD CS-WSF CONTRIBUTES ITS ACTUAL LENGTH, METHOD GB CONTRIBUTES 5' ITS ACTUAL LENGTH, AND METHOD FF CONTRIBUTES 15 TIMES ITS ACTUAL LENGTH.

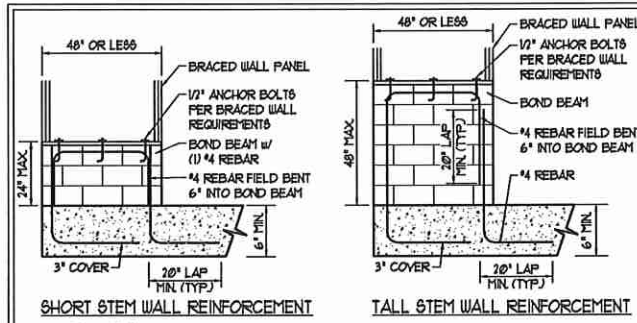


OVER CONCRETE OR MASONRY BLOCK FOUNDATION



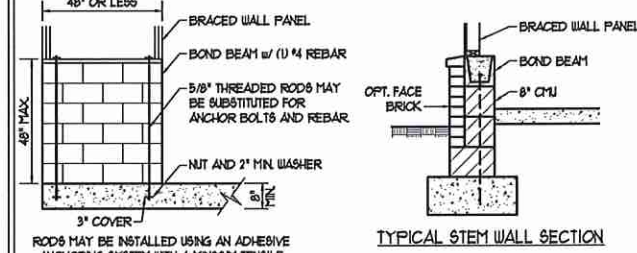
OVER RAISED WOOD FLOOR - FRAMING ANCHOR OPTION
* APPLICABLE w/ GREATER THAN 12" KNEE WALL HEIGHTS IN CRAWL SPACE AND ABOVE FRAMED BASEMENT WALLS *

METHOD FF-PORTAL FRAME DETAIL ①



SHORT STEM WALL REINFORCEMENT

TALL STEM WALL REINFORCEMENT



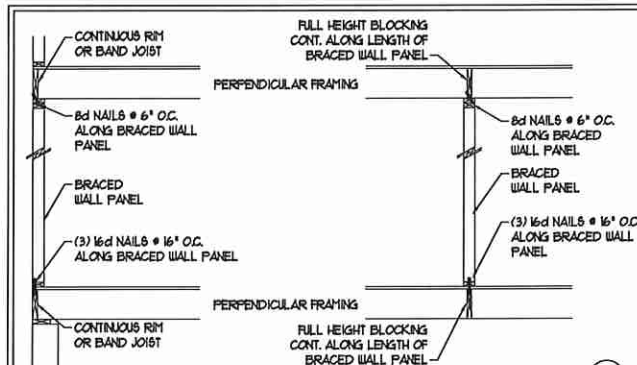
TYPICAL STEM WALL SECTION

OPTIONAL STEM WALL REINFORCEMENT

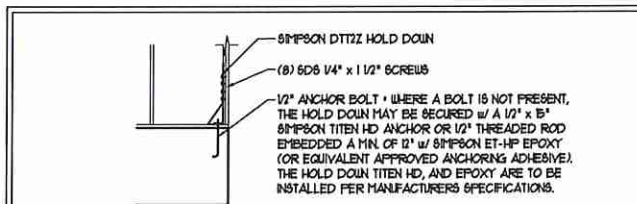
RODS MAY BE INSTALLED USING AN ADHESIVE ANCHORING SYSTEM WITH A MINIMUM TENSILE CAPACITY OF 3750 LBS AND INSTALLED IN ACCORDANCE WITH MANUFACTURER'S SPECS.

NOTE: GROUT BOND BEAMS AND ALL CELLS WHICH CONTAIN REBAR, THREADED RODS AND ANCHOR BOLTS

MASONRY STEM WALLS SUPPORTING BRACED WALL PANELS ②
PER FIGURE R602.10.4.3

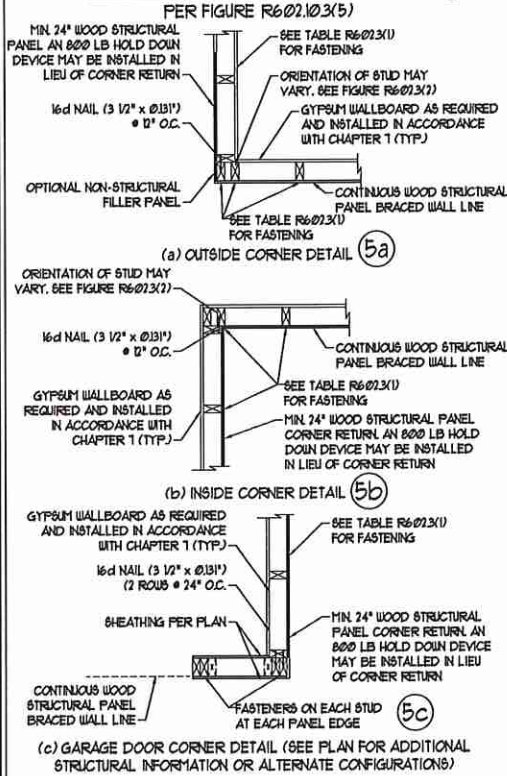


BRACED WALL PANEL CONNECTION WHEN PERPENDICULAR TO FLOOR/CEILING FRAMING ③
PER FIGURE R602.10.4.4(1)

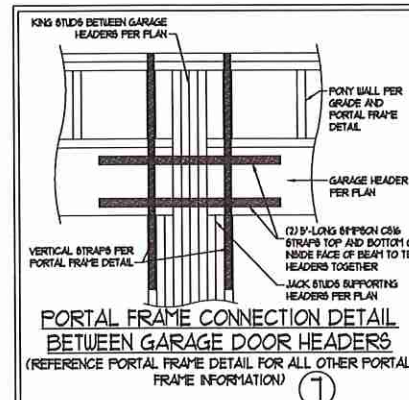


HOLD DOWN DETAIL FOR MASONRY FOUNDATION OR MONOLITHIC SLAB ④
* APPLICABLE ONLY WHERE SPECIFIED ON PLAN *

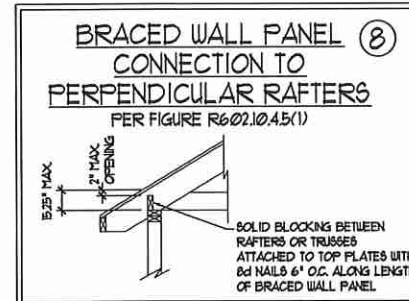
TYPICAL EXTERIOR CORNER FRAMING FOR CONTINUOUS SHEATHING ⑤



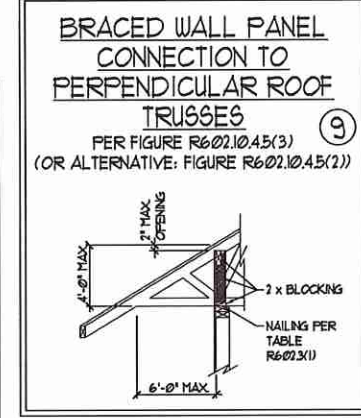
(c) GARAGE DOOR CORNER DETAIL (SEE PLAN FOR ADDITIONAL STRUCTURAL INFORMATION OR ALTERNATE CONFIGURATIONS)



PORTAL FRAME CONNECTION DETAIL BETWEEN GARAGE DOOR HEADERS (REFERENCE PORTAL FRAME DETAIL FOR ALL OTHER PORTAL FRAME INFORMATION) ⑦

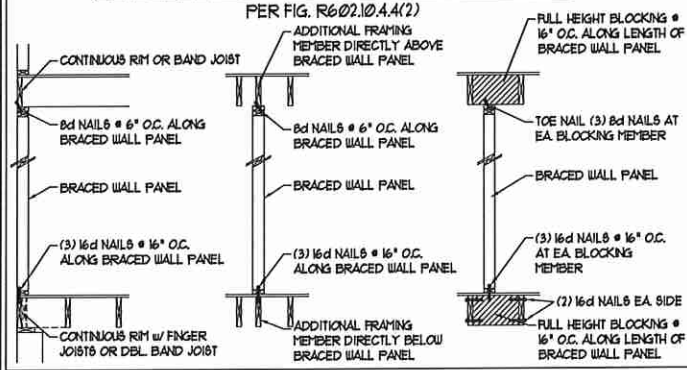


BRACED WALL PANEL CONNECTION TO PERPENDICULAR RAFTERS ⑧
PER FIGURE R602.10.4.5(1)



BRACED WALL PANEL CONNECTION TO PERPENDICULAR ROOF TRUSSES ⑨
PER FIGURE R602.10.4.5(3) (OR ALTERNATIVE: FIGURE R602.10.4.5(2))

BRACED WALL PANEL CONNECTION WHEN PARALLEL TO FLOOR/CEILING FRAMING ⑥



This sealed page is to be used in conjunction with a full plan set engineered by J.S. Thompson Engineering, Inc. only. Use of this individual sealed page within architectural pages or shop drawings by others is a punishable offense under N.C. Statute § 89C-23



J.S. THOMPSON ENGINEERING, INC.
600 WADE AVE., SUITE 104 RALEIGH, NC 27605
PHONE: (919) 789-9919 FAX: (919) 789-9921
N.C. LICENSE NO. C11733

120 MPH - 130 MPH ULTIMATE DESIGN WIND SPEED
WALL BRACING NOTES AND DETAILS

DATE: NOVEMBER 14, 2018
SCALE: 1/4" = 1'-0"
DRAWN BY: JST
ENGINEERED BY: JST

D-2
BRACED WALL NOTES AND DETAILS AND FF DETAIL

GENERAL NOTES

- ENGINEER'S SEAL APPLIES ONLY TO STRUCTURAL COMPONENTS INCLUDING ROOF RAFTERS, HIPS, VALLEYS, RIDGES, FLOORS, WALLS, BEAMS, HEADERS, COLUMNS, CANTILEVERS, OFFSET LOAD BEARING WALLS, PIERS, GIRDER SYSTEM AND FOOTING. ENGINEER'S SEAL DOES NOT CERTIFY DIMENSIONAL ACCURACY OF ARCHITECTURAL LAYOUT INCLUDING ROOF. ENGINEER'S SEAL DOES NOT APPLY TO I-JOIST OR FLOOR/ROOF TRUSS LAYOUT DESIGN AND ACCURACY.
 - ALL CONSTRUCTION SHALL CONFORM TO THE LATEST REQUIREMENTS OF THE NORTH CAROLINA RESIDENTIAL CODE (NCRC) 2018 EDITION, PLUS ALL LOCAL CODES AND REGULATIONS. THE STRUCTURAL ENGINEER IS NOT RESPONSIBLE FOR AND WILL NOT HAVE CONTROL OF, CONSTRUCTION MEANS, METHODS, TECHNIQUES, SEQUENCES OR PROCEDURES, OR SAFETY PRECAUTIONS AND PROGRAMS IN CONNECTION WITH THE CONSTRUCTION WORK. NOR WILL THE ENGINEER BE RESPONSIBLE FOR THE CONTRACTOR'S FAILURE TO CARRY OUT THE CONSTRUCTION WORK IN ACCORDANCE WITH THE CONTRACT DOCUMENTS.
 - STRUCTURAL DESIGN BASED ON THE PROVISIONS OF THE NCRC, 2018 EDITION (R301.4 - R301.7)
- | DESIGN CRITERIA: | LIVE LOAD (PSF) | DEAD LOAD (PSF) | DEFLECTION (IN) |
|--------------------------------|---|-----------------|-----------------------------------|
| ATTIC WITH LIMITED STORAGE | 20 | 10 | L/240 (L/360 w/ BRITTLE FINISHES) |
| ATTIC WITHOUT STORAGE | 10 | 10 | L/360 |
| DECKS | 40 | 10 | L/360 |
| EXTERIOR BALCONIES | 40 | 10 | L/360 |
| FIRE ESCAPES | 40 | 10 | L/360 |
| HANDRAILS/GUARDRAILS | 200 LB OR 50 (PLF) | 10 | L/360 |
| PASSENGER VEHICLE GARAGE | 50 | 10 | L/360 |
| ROOMS OTHER THAN SLEEPING ROOM | 40 | 10 | L/360 |
| SLEEPING ROOMS | 30 | 10 | L/360 |
| STAIRS | 40 | 10 | L/360 |
| WIND LOAD | (BASED ON TABLE R301.2(4) WIND ZONE AND EXPOSURE) | | |
| GROUND SNOW LOAD, Pg | 20 (PSF) | | |
- I-JOIST SYSTEMS DESIGNED WITH D PSF DEAD LOAD AND DEFLECTION (IN) OF L/480
 - FLOOR TRUSS SYSTEMS DESIGNED WITH B PSF DEAD LOAD
- FOR 15 AND 120 MPH WIND ZONES, FOUNDATION ANCHORAGE IS TO COMPLY WITH SECTION R403.1.6 OF THE NCRC, 2018 EDITION. FOR 150 MPH, 140 MPH, AND 50 MPH WIND ZONES, FOUNDATION ANCHORAGE IS TO COMPLY WITH SECTION 450.4 OF THE NCRC, 2018 EDITION.
 - ENERGY EFFICIENCY COMPLIANCE AND INSULATION VALUES OF THE BUILDING TO BE IN ACCORDANCE WITH CHAPTER II OF THE NCRC, 2018 EDITION.

FOOTING AND FOUNDATION NOTES

- FOUNDATION DESIGN BASED ON A MINIMUM ALLOWABLE BEARING CAPACITY OF 2000 PSF. CONTACT GEOTECHNICAL ENGINEER IF BEARING CAPACITY IS NOT ACHIEVED.
- FOR ALL CONCRETE SLABS AND FOOTINGS, THE AREA WITHIN THE PERIMETER OF THE BUILDING ENVELOPE SHALL HAVE ALL VEGETATION, TOP SOIL AND FOREIGN MATERIAL REMOVED. FILL MATERIAL SHALL BE FREE OF VEGETATION AND FOREIGN MATERIAL. THE FILL SHALL BE COMPACTED TO ASSURE UNIFORM SUPPORT OF THE SLAB, AND EXCEPT WHERE APPROVED, THE FILL DEPTHS SHALL NOT EXCEED 24" FOR CLEAN SAND OR GRAVEL. A 4" THICK BASED COURSE CONSISTING OF CLEAN GRADED SAND OR GRAVEL SHALL BE PLACED. A BASE COURSE IS NOT REQUIRED WHERE A CONCRETE SLAB IS INSTALLED ON WELL-DRAINED OR SAND-GRAVEL MIXTURE SOILS CLASSIFIED AS GROUP 1, ACCORDING TO THE UNITED SOIL CLASSIFICATION SYSTEM IN ACCORDANCE WITH TABLE R409.1 OF THE NCRC, 2018 EDITION.
- PROPERLY DEWATER EXCAVATION PRIOR TO POURING CONCRETE WHEN BOTTOM OF CONCRETE SLAB IS AT OR BELOW WATER TABLE. IF APPLICABLE, 3/4" - 1" DEEP CONTROL JOINTS ARE TO BE SALED WITHIN 4 TO 12 HOURS OF CONCRETE FINISHING AND WALL LOCATIONS HAVE BEEN MARKED. ADJUST WHERE NECESSARY.
- CONCRETE SHALL CONFORM TO SECTION R402.2 OF THE NCRC, 2018 EDITION. CONCRETE REINFORCING STEEL TO BE ASTM A635 GRADE 60, WELDED WIRE FABRIC TO BE ASTM A108. MAINTAIN A MINIMUM CONCRETE COVER AROUND REINFORCING STEEL OF 3" IN FOOTINGS AND 1 1/2" IN SLABS. FOR Poured CONCRETE WALLS, CONCRETE COVER FOR REINFORCING STEEL MEASURED FROM THE INSIDE FACE OF THE WALL SHALL NOT BE LESS THAN 3/4". CONCRETE COVER FOR REINFORCING STEEL MEASURED FROM THE OUTSIDE FACE OF THE WALL SHALL NOT BE LESS THAN 1 1/2" FOR #5 BARS OR SMALLER, AND NOT LESS THAN 2" FOR #6 BARS OR LARGER.
- MASONRY UNITS TO CONFORM TO ACE 530/ASCE 5/11/15 402. MORTAR SHALL CONFORM TO ASTM C210.
- THE UNSUPPORTED HEIGHT OF MASONRY PIERS SHALL NOT EXCEED FOUR TIMES THEIR LEAST DIMENSION FOR UNFILLED HOLLOW CONCRETE MASONRY UNITS AND TEN TIMES THEIR LEAST DIMENSION FOR SOLID OR SOLID FILLED PIERS. PIERS MAY BE FILLED SOLID WITH CONCRETE OR TYPE M OR S MORTAR. PIERS AND WALLS SHALL BE CAPPED WITH 8" OF SOLID MASONRY.
- THE CENTER OF EACH OF THE PIERS SHALL BEAR IN THE MIDDLE THIRD OF ITS RESPECTIVE FOOTING. EACH GIRDER SHALL BEAR IN THE MIDDLE THIRD OF THE PIERS.
- ALL CONCRETE AND MASONRY FOUNDATION WALLS ARE TO BE CONSTRUCTED IN ACCORDANCE WITH THE PROVISIONS OF SECTION R404 OF THE NCRC, 2018 EDITION OR IN ACCORDANCE WITH ACI 318, ACI 332, NCHA TR68-A OR ACE 530/ASCE 5/11/15 402. MASONRY FOUNDATION WALLS ARE TO BE REINFORCED PER TABLE R404.1(1), R404.1(2), R404.1(3), OR R404.1(4) OF THE NCRC, 2018 EDITION. CONCRETE FOUNDATION WALLS ARE TO BE REINFORCED PER TABLE R404.1(5) OF THE NCRC, 2018 EDITION. STEEL CONCRETE FOUNDATION WALLS TO 2 x 6 FRAMED WALLS AT 16" O.C. WHERE GRADE PERMITS (NO).

This sealed page is to be used in conjunction with a full plan set engineered by J.S. Thompson Engineering, Inc. only. Use of this individual sealed page within architectural pages or shop drawings by others is a punishable offense under N.C. Statute § 89C-23

FRAMING NOTES

- ALL FRAMING LUMBER SHALL BE #2 SFF MINIMUM (Fb = 875 PSI, Fv = 375 PSI, E = 16000000 PSI) UNLESS NOTED OTHERWISE (UNO). ALL TREATED LUMBER SHALL BE #2 SYP MINIMUM (Fb = 975 PSI, Fv = 175 PSI, E = 16000000 PSI) UNLESS NOTED OTHERWISE (UNO).
- LAMINATED VENEER LUMBER (LVL) SHALL HAVE THE FOLLOWING MINIMUM PROPERTIES: Fb = 2600 PSI, Fv = 285 PSI, E = 19000000 PSI. LAMINATED STRAND LUMBER (LSL) SHALL HAVE THE FOLLOWING MINIMUM PROPERTIES: Fb = 2325 PSI, Fv = 310 PSI, E = 15000000 PSI. PARALLEL STRAND LUMBER (PSL) UP TO 1" DEPTH SHALL HAVE THE FOLLOWING MINIMUM PROPERTIES: Fc = 2500 PSI, E = 18000000 PSI. PARALLEL STRAND LUMBER (PSL) MORE THAN 1" DEPTH SHALL HAVE THE FOLLOWING MINIMUM PROPERTIES: Fc = 2300 PSI, E = 20000000 PSI. INSTALL ALL CONNECTIONS PER MANUFACTURER'S SPECIFICATIONS.
- STRUCTURAL STEEL SHALL CONFORM TO THE FOLLOWING ASTM SPECIFICATIONS:
 - A. W AND WT SHAPES: ASTM A992
 - B. CHANNELS AND ANGLES: ASTM A36
 - C. PLATES AND BARS: ASTM A36
 - D. HOLLOW STRUCTURAL SECTIONS: ASTM A500 GRADE B
 - E. STEEL PIPE: ASTM A53, GRADE B, TYPE E OR S
- STEEL BEAMS SHALL BE SUPPORTED AT EACH END WITH A MINIMUM BEARING LENGTH OF 3 1/2" AND FULL FLANGE WIDTH (UNO). PROVIDE SOLID BEARING FROM BEAM SUPPORT TO FOUNDATION. BEAMS SHALL BE ATTACHED AT THE BOTTOM FLANGE TO EACH SUPPORT AS FOLLOWS (UNO):
 - A. WOOD FRAMING: (2) 1/2" DIA. x 4" LONG LAG SCREWS
 - B. CONCRETE: (2) 1/2" DIA. x 4" WEDGE ANCHORS
 - C. MASONRY (FULLY GROUTED): (2) 1/2" DIA. x 4" LONG SIMPSON TITEN HD ANCHORS

LATERAL SUPPORT IS CONSIDERED ADEQUATE PROVIDING THE JOISTS ARE TOE NAILED TO THE 2x NAILER ON TOP OF THE STEEL BEAM, AND THE 2x NAILER IS SECURED TO THE TOP OF THE STEEL BEAM w/ (2) ROWS OF SELF TAPPING SCREWS # 16" O.C. OR (2) ROWS OF 1/2" DIAMETER BOLTS # 16" O.C. IF 1/2" BOLTS ARE USED TO FASTEN THE NAILER, THE STEEL BEAM SHALL BE FABRICATED w/ (2) ROWS OF 9/16" DIAMETER HOLES # 16" O.C.
- SQUARES DENOTE POINT LOADS WHICH REQUIRE SOLID BLOCKING TO GIRDER OR FOUNDATION. SHADED SQUARES DENOTE POINT LOADS FROM ABOVE WHICH REQUIRE SOLID BLOCKING TO SUPPORTING MEMBER BELOW.
- ALL LOAD BEARING HEADERS TO CONFORM TO TABLE R602.1(1) AND R602.1(2) OF THE NCRC, 2018 EDITION OR BE (2) 2 x 6 WITH (1) JACK AND (1) KING STUD EACH END (UNO), WHICHEVER IS GREATER. ALL HEADERS TO BE SECURED TO EACH JACK STUD WITH (4) 8d NAILS. ALL BEAMS TO BE SUPPORTED WITH (2) STUDS AT EACH BEARING POINT (UNO). INSTALL KING STUDS PER SECTION R602.1.5 OF THE NORTH CAROLINA RESIDENTIAL CODE, 2018 EDITION.
- ALL BEAMS, HEADERS, OR GIRDER TRUSSES PARALLEL TO WALL ARE TO BEAR FULLY ON (1) JACK OR (2) STUDS MINIMUM OR THE NUMBER OF JACKS OR STUDS NOTED. ALL BEAMS OR GIRDER TRUSSES PERPENDICULAR TO WALL AND SUPPORTED BY (3) STUDS OR LESS ARE TO HAVE 1 1/2" MINIMUM BEARING (UNO). ALL BEAMS OR GIRDER TRUSSES PERPENDICULAR TO WALL AND SUPPORTED BY MORE THAN (3) STUDS OR OTHER NOTED COLUMN ARE TO BEAR FULLY ON SUPPORT COLUMN FOR ENTIRE WALL DEPTH (UNO). BEAM ENDS THAT BUTT INTO ONE ANOTHER ARE TO EACH BEAR EQUAL LENGTHS (UNO).
- FLITCH BEAMS SHALL BE BOLTED TOGETHER USING 1/2" DIAMETER BOLTS (ASTM A307) WITH WASHERS PLACED AT THREADED END OF BOLT. BOLTS SHALL BE SPACED AT 24" CENTERS (MAXIMUM), AND STAGGERED AT TOP AND BOTTOM OF BEAM (2" EDGE DISTANCE), WITH (2) BOLTS LOCATED AT 6" FROM EACH END (UNO).
- ALL I-JOIST OR TRUSS LAYOUTS ARE TO BE IN COMPLIANCE WITH THE OVERALL DESIGN SPECIFIED ON THE PLANS. ALL DEVIATIONS ARE TO BE BROUGHT TO THE ATTENTION OF THE ENGINEER OF RECORD PRIOR TO INSTALLATION.
- BRACED WALL PANELS SHALL BE CONSTRUCTED ACCORDING TO THE NORTH CAROLINA RESIDENTIAL CODE 2018 EDITION WALL BRACING CRITERIA, THE AMOUNT, LENGTH, AND LOCATION OF BRACING SHALL COMPLY WITH ALL APPLICABLE TABLES IN SECTION R602.10.
- PROVIDE DOUBLE JOIST UNDER ALL WALLS PARALLEL TO FLOOR JOISTS. PROVIDE SUPPORT UNDER ALL WALLS PARALLEL TO FLOOR TRUSSES OR I-JOISTS PER MANUFACTURER'S SPECIFICATIONS. INSTALL BLOCKING BETWEEN JOISTS OR TRUSSES FOR POINT LOAD SUPPORT FOR ALL POINT LOADS ALONG OFFSET LOAD LINES.
- FOR ALL HEADERS SUPPORTING BRICK VENEER THAT ARE LESS THAN 8'-0" IN LENGTH, REST A 6" x 4" x 5/16" STEEL ANGLE WITH 6" MINIMUM EMBEDMENT AT SIDES FOR BRICK SUPPORT (UNO). FOR ALL HEADERS 8'-0" AND GREATER IN LENGTH, BOLT A 6" x 4" x 5/16" STEEL ANGLE TO HEADER WITH 1/2" LAG SCREWS AT 12" O.C. STAGGERED FOR BRICK SUPPORT. FOR ALL BRICK SUPPORT AT ROOF LINES, BOLT A 6" x 4" x 5/16" STEEL ANGLE TO (2) 2 x 10 BLOCKING INSTALLED w/ (4) 10d NAILS EA. PLY BETWEEN WALL STUDS WITH (2) ROWS OF 1/2" LAG SCREWS AT 12" O.C. STAGGERED AND IN ACCORDANCE WITH SECTION R103.2(1) OF THE NCRC, 2018 EDITION.
- FOR STICK FRAMED ROOFS, CIRCLES DENOTE (3) 2 x 4 POSTS FOR ROOF MEMBER SUPPORT. HIP SPLICES ARE TO BE SPACED A MINIMUM OF 8'-0". FASTEN MEMBERS WITH THREE ROWS OF 10d NAILS AT 16" O.C. FRAME DORMER WALLS ON TOP OF DOUBLE OR TRIPLE RAFTERS AS SHOWN (UNO).
- FOR TRUSSED ROOFS, FRAME DORMER WALLS ON TOP OF 2 x 4 LADDER FRAMING AT 24" O.C. BETWEEN ADJACENT ROOF TRUSSES. STICK FRAME OVER-FRAMED ROOF SECTIONS WITH 2 x 8 RIDGES, 2 x 6 RAFTERS AT 16" O.C. AND FLAT 2 x 10 VALLEYS (UNO).
- ALL 4 x 4 AND 6 x 6 POSTS TO BE INSTALLED WITH 1000 LB CAPACITY UPLIFT CONNECTORS TOP AND BOTTOM (UNO). POSTS MAY BE SECURED USING ONE SIMPSON H6 OR L152 UPLIFT CONNECTOR FASTENED TO THE BAND AT THE BOTTOM AND THE BEAM AT THE TOP OF EACH POST. ONE 16" SECTION OF SIMPSON C916 COIL STRAPPING WITH (8) 8d HDG NAILS AT EACH END MAY BE USED IN LIEU OF EACH TWIN STRAP IF DESIRED. FOR MASONRY OR CONCRETE FOUNDATION USE SIMPSON POST BASE.

J.S. THOMPSON ENGINEERING, INC.
 600 WADE AVE., SUITE 104 RALEIGH, NC 27605
 PHONE: (919) 789-9919 FAX: (919) 789-9921
 N.C. LICENSE NO.: CT133

120 MPH - 130 MPH ULTIMATE DESIGN WIND SPEED
 STANDARD STRUCTURAL NOTES

DATE: NOVEMBER 14, 2018
 SCALE: 1/4" = 1'-0"
 DRAWN BY: JES
 ENGINEERED BY: JST



S0
 STRUCTURAL
 NOTES

1/29/2020