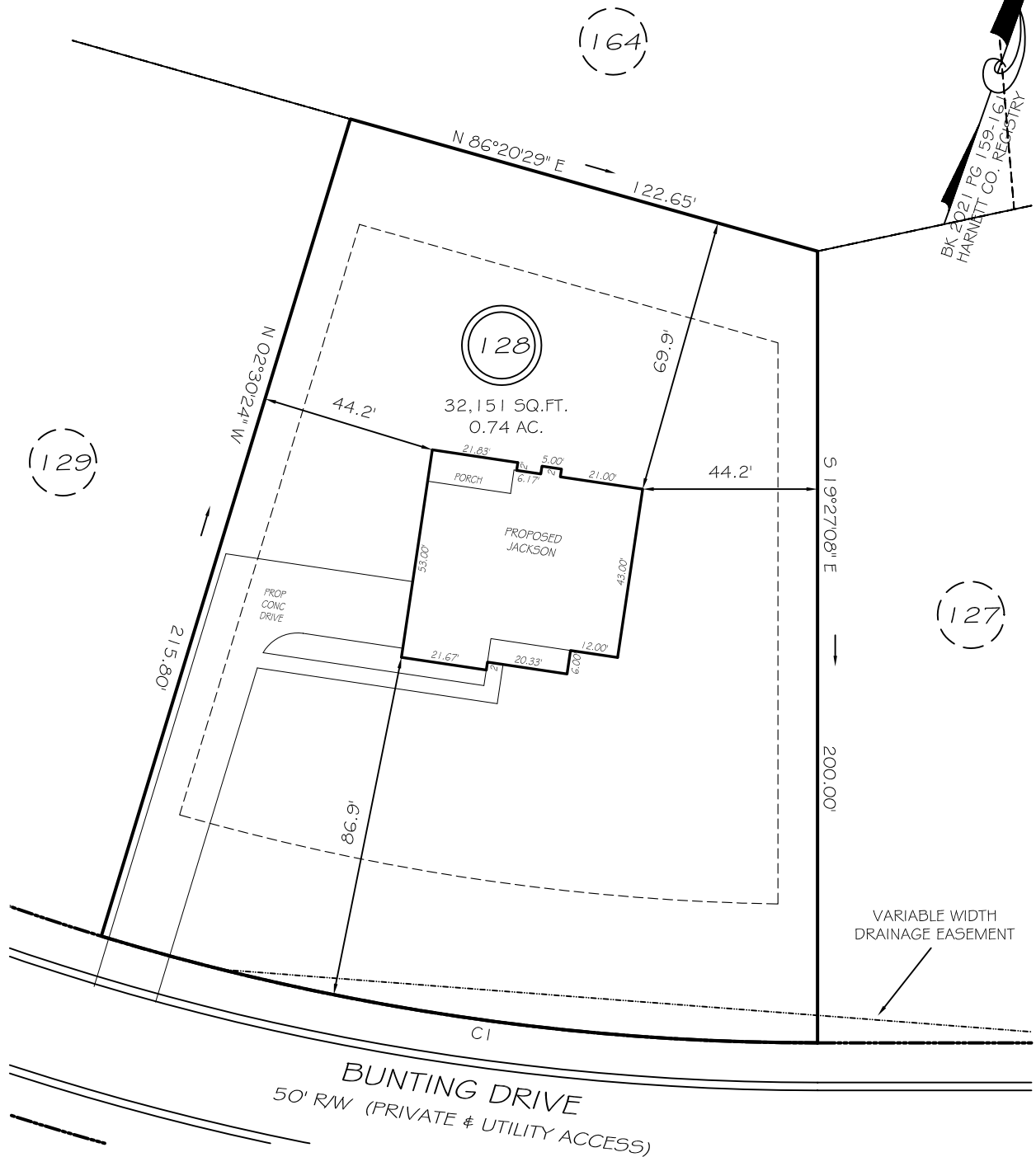


I, MICHAEL P. GRIFFIN, certify that under my direction and supervision this map was drawn from an actual field survey; that the error of closure of the survey as calculated by coordinates is 1: 10,000+; that the area shown hereon was calculated by coordinates.  
 Witness my hand and seal this day of MONTH 2021.



VARIABLE WIDTH DRAINAGE EASEMENT

BUNTING DRIVE  
 50' RW (PRIVATE & UTILITY ACCESS)

SETBACKS

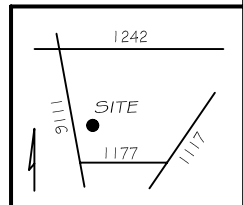
FRONT	35'
REAR	25'
SIDE	10'
CORNER	20'

REVISION: ADJUST DRIVE 6/4/21  
 CI R=620.73' L=183.59' N79°01'14"E 182.92'

LEGEND

**PRELIMINARY**  
 NOT FOR RECORDATION,  
 SALES OR CONVEYANCE

EIP	EXISTING IRON PIPE	FES	FLARED END SECTION
IPS	IRON PIPE SET	WM	WATER METER
R/W	RIGHT OF WAY	CO	CLEAN OUT
N/F	NOW OR FORMERLY	FH	FIRE HYDRANT
EIS	EXISTING IRON STAKE	CB	CATCH BASIN



GRIFFIN LAND SURVEYING, INC.

P. O. BOX 148  
 FUQUAY-VARINA, NC 27526  
 (919) - 567-1963

PLOT PLAN  
 FOR  
**H & H HOMES**

OAKMONT  
 LOT 128  
 BUNTING DRIVE  
 NORTH CAROLINA

HARNETT COUNTY BARBECUE TOWNSHIP

DRAWN BY NMF

DATE 4/23/21

CHECKED BY MPG

SCALE 1" = 40'