

**NOTES:**

**1. For all layouts based on plans that have been sealed by an engineer:**

This is a placement plan only. This layout is to be used in congruence with the plans sealed by the engineer of record. TBC is not responsible for the design of the floor system indicated. Please see the engineer's plans for all structural information, bolts/screw/nail pattern, connections, hardware, loading information, etc..

**2. For all layouts based on plans not sealed by an engineer:**

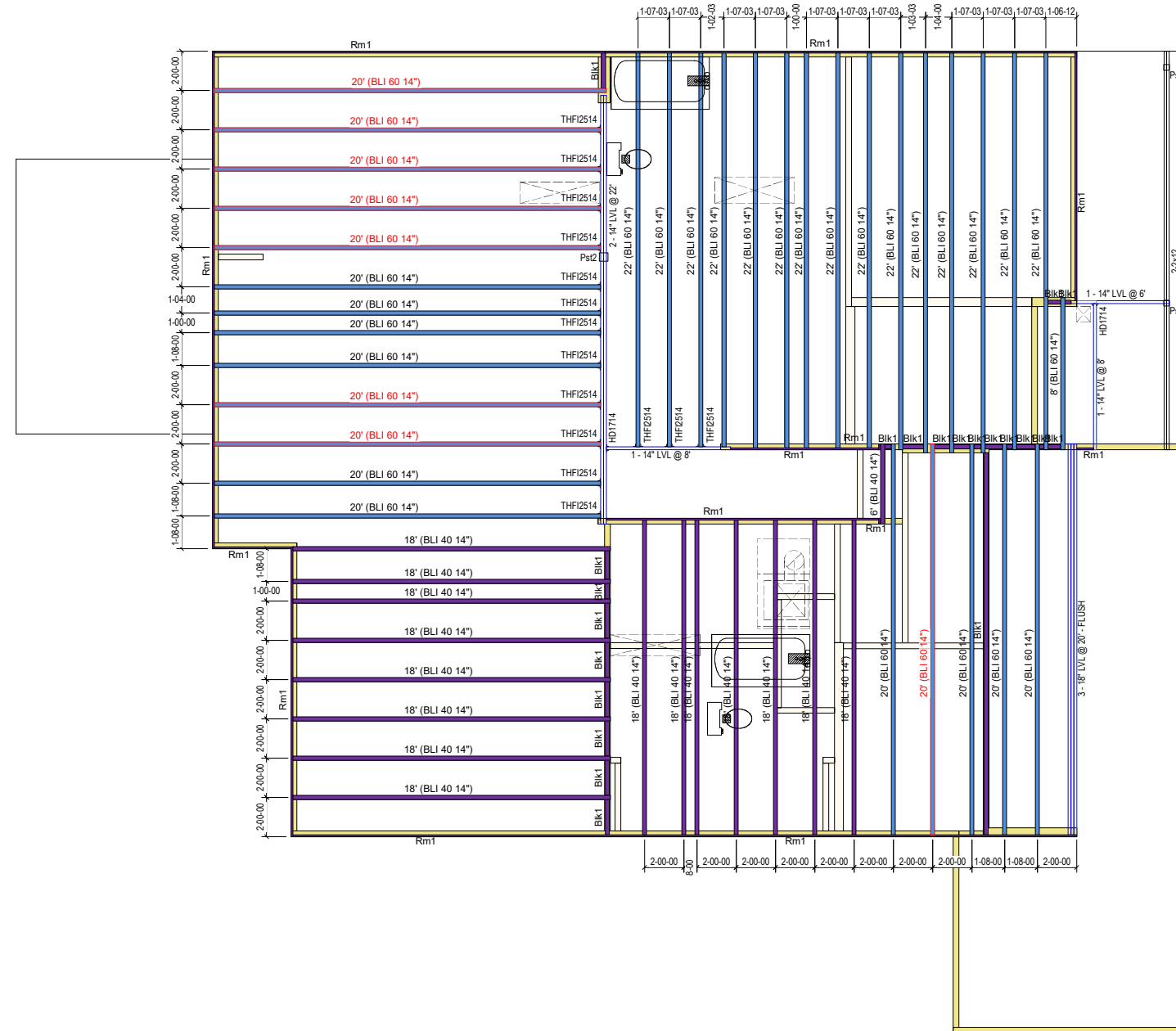
This design is intended to meet NCBC based on the design loadings indicated or not indicated, based on the minimum required loadings per code. All EWP designs are to be reviewed and approved by a structural engineer of record or the general contractor of record prior to installation. It is recommended that all designs are to be reviewed and stamped by a local engineer prior to shipment. Please refer to the Blulinx Installation Guide for all connections, Solid blocking, web filling information, etc. All concentrated loads bearing through the roof and floor systems must be solid blocked in order to avoid any crushing of EWP material.

**3. General Installation Notes:**

I-Joists require 1 3/4" minimum bearing and should be nailed to the bearing plate with one sinker nail on each side.

I-Joist Rim and onCenter Rimboard could be nailed to the bearing plate with 8d nails @ 6" OC.

Side Loaded Double I-Joists shall be packed solid and connected with 2 rows od 10d nails @ 12" OC.

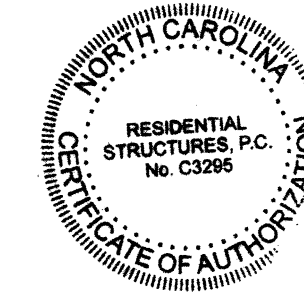
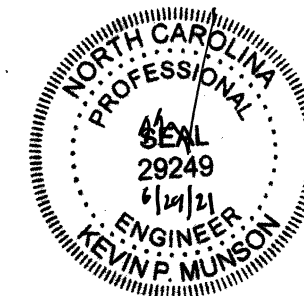


3300 The Warren'  
**SECOND FLOOR WAG-14**

PlotID	Length	Product	Piles	Net Qty	Fab Type
18' (BLI 40 14")	18-00-00	BLI 40 14"	1	15	MFD
6' (BLI 40 14")	6-00-00	BLI 40 14"	1	1	FF
22' (BLI 60 14")	22-00-00	BLI 60 14"	1	15	MFD
20' (BLI 60 14")	20-00-00	BLI 60 14"	1	18	MFD
8' (BLI 60 14")	8-00-00	BLI 60 14"	1	1	MFD
2 - 14" LVL @ 22"	22-00-00	onCENTER® LVL 2.0E 1 3/4" x 14"	2	2	MFD
1 - 14" LVL @ 8"	8-00-00	onCENTER® LVL 2.0E 1 3/4" x 14"	1	2	MFD
1 - 14" LVL @ 8"	6-00-00	onCENTER® LVL 2.0E 1 3/4" x 14"	1	1	MFD
3 - 18" LVL @ 20" - FLUSH	20-00-00	onCENTER® LVL 2.0E 1 3/4" x 18"	3	3	MFD
Rm1	12-00-00	onCENTER® Rim SE 1 1/8" x 14"	1	14	FF
Bk1	42-00-00	BLI 40 14"	1	1	MFD

PlotID	Length	Product	Piles	Net Qty	Fab Type
Hd1	20-00-00	onCENTER® LVL 2.0E 1 3/4" x 11 7/8"	2	2	MFD

Qty	Manuf	Product	Flange	Skew	Slope
2		HD1714	None	-	-
15		THF12514	None	-	-



**RESIDENTIAL STRUCTURES, P.C.**  
3410 N. Davidson St.  
Charlotte, N.C. 28205  
Seal For Structural Only

SHOP DRAWING REVIEW  
REVIEW IS FOR GENERAL COMPLIANCE WITH  
CONTRACT DOCUMENTS AND STRUCTURAL PLANS.  
SOLE RESPONSIBILITY FOR CORRECTNESS OF  
DIMENSIONS, DETAILS, AND QUANTITIES SHALL  
REMAIN WITH THE CONTRACTOR.

**The Building Center**  
Engineered Wood Division

**2nd Floor Placement Plan**

Plan: **21-804**  
3300 'The Warren'

**True Homes**

Job: **Walker Grove 14**

Date: 6/25/2021 Scale: 1/8"=1'-0"

Designed By: RR

Checked By: RR Revised By:

Sheet: **1 of 1**