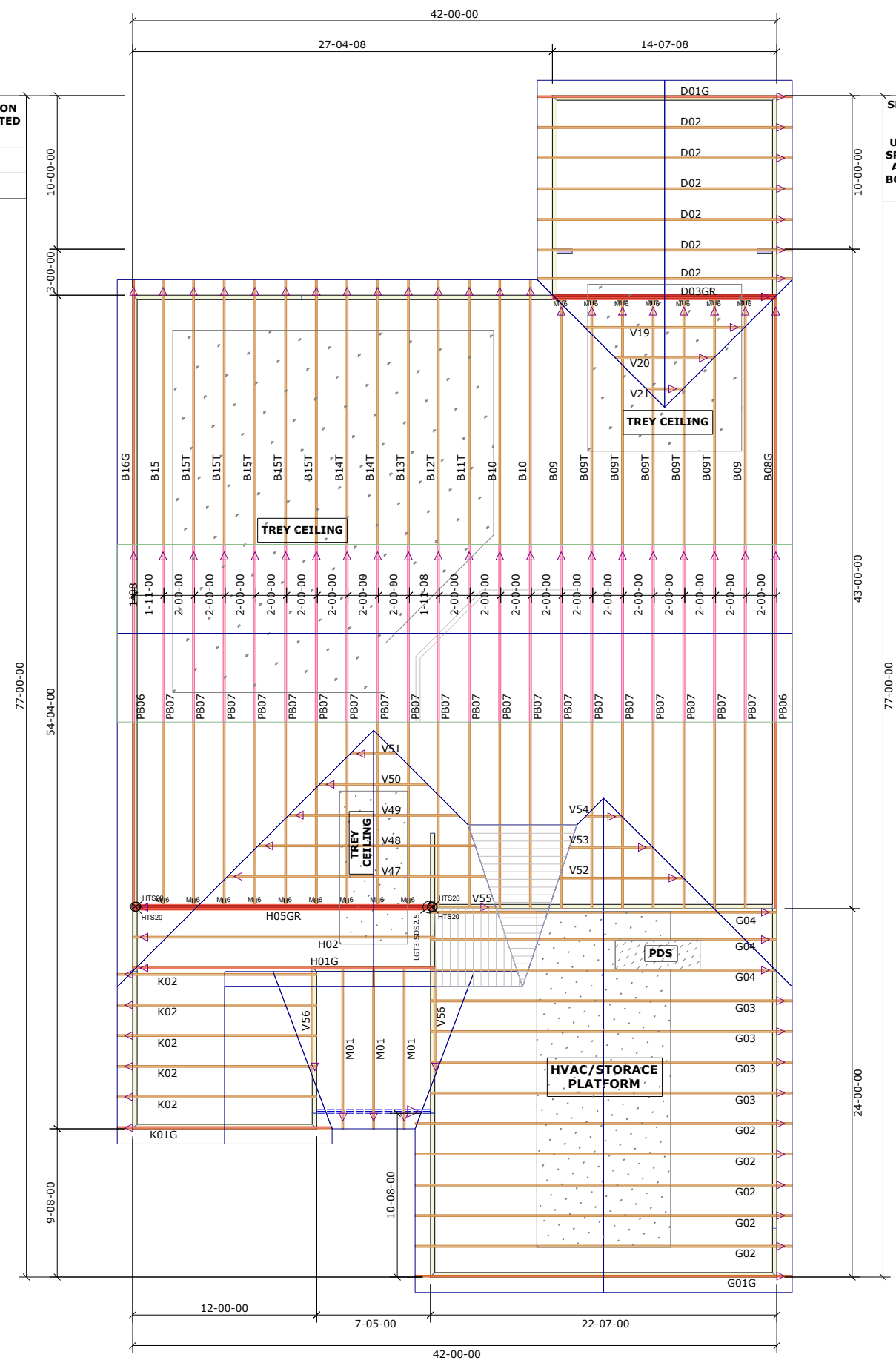


Builders First Source
 23 Red Cedar Way
 Apex, NC 27523
 Phone: (919) 363-4956
 Fax: (919) 387-8565
 http://www.bldr.com

NOTE: LEFT END OF TRUSS AS SHOWN ON TRUSS DETAIL DRAWINGS ARE INDICATED ON LAYOUT BY TRIANGLE ICONS

WALL HEIGHTS=FT-IN-16"s	
1ST FLOOR	09-01-02

SPACE TRUSSES 2' O.C. UNLESS A WIDE P.D.S. IS GOING TO BE INSTALLED. IF WIDE P.D.S. IS USED, FOLLOW SPEDCIAL TRUSS SPACING AS NOTED ON LAYOUT & ATTACH 2X4 LEDGERS TO TOP & BOTTOM CHORDS W/12d NAILS @ 16" O.C.



General Notes:

- Per ANSI/TPI 1-2002 all " Truss to Wall" connections are the responsibility of the Building Designer, not the Truss Manufacturer.
- Dimensions are Feet-Inches- Sixteenths.
- Trusses are to be 24" o.c. unless noted otherwise (U.N.O.)
- Trusses are not designed to support brick U.N.O.
- Do not cut or modify trusses without first contacting Builders FirstSource.
- Immediately contact Builders FirstSource if trusses are damaged.

Connection Notes:

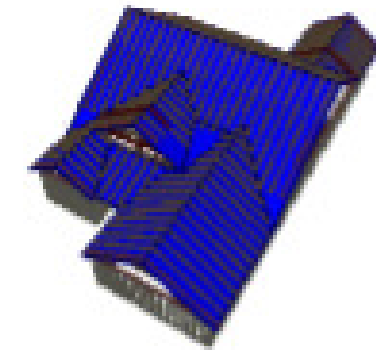
- All hangers are to be Simpson or equivalent U.N.O.
- Use Manufacturer's specifications for all hanger connections U.N.O.
- Use 10d x 1 1/2" Nails in hanger connections to single ply roof girder trusses.

Floor Notes:

- Shift truss as required to avoid plumbing traps.
- Installation Contractor and/or Field Supervisor are to verify all dimensions, trap locations, and options prior to installation

Dimension Notes:

- Drawing not to scale. Do not scale dimensions



Hanger List		All Tie Downs H2.5T Unless noted
16	HTU26	M/L 8
0	HTU28	M/L 8
4	HTS20	/
0	LGT2	/
1	LGT3-SDS2.5	/
0	LUS24	L/L 14

Special Items List	

Misc Material	

McKee		
Torino 2020	Elev:	Classic
Carriag Glenn/67 Glenwood Ct		
Cumberland	NC	Lot: 997
Appwright #		
Permit (2837353)		
Code: IRC 2015		
Loading:		
T.C.L.L. 20		
T.C.D.L. 10		
B.C.L.L. 0		
B.C.D.L. 10		

Revision History		Wind:	
Rev1:	xx/xx/xx	M.P.H.	130
Rev2:	xx/xx/xx	Exposure Category	
Rev3:	xx/xx/xx	B (Wooded areas/other)	
Pick Ticket:	---	Job No:	---
Sales No:	---	Acct No:	---

Hatch Legend	
	Attic Room
	Volume Ceiling
	Stick Framing