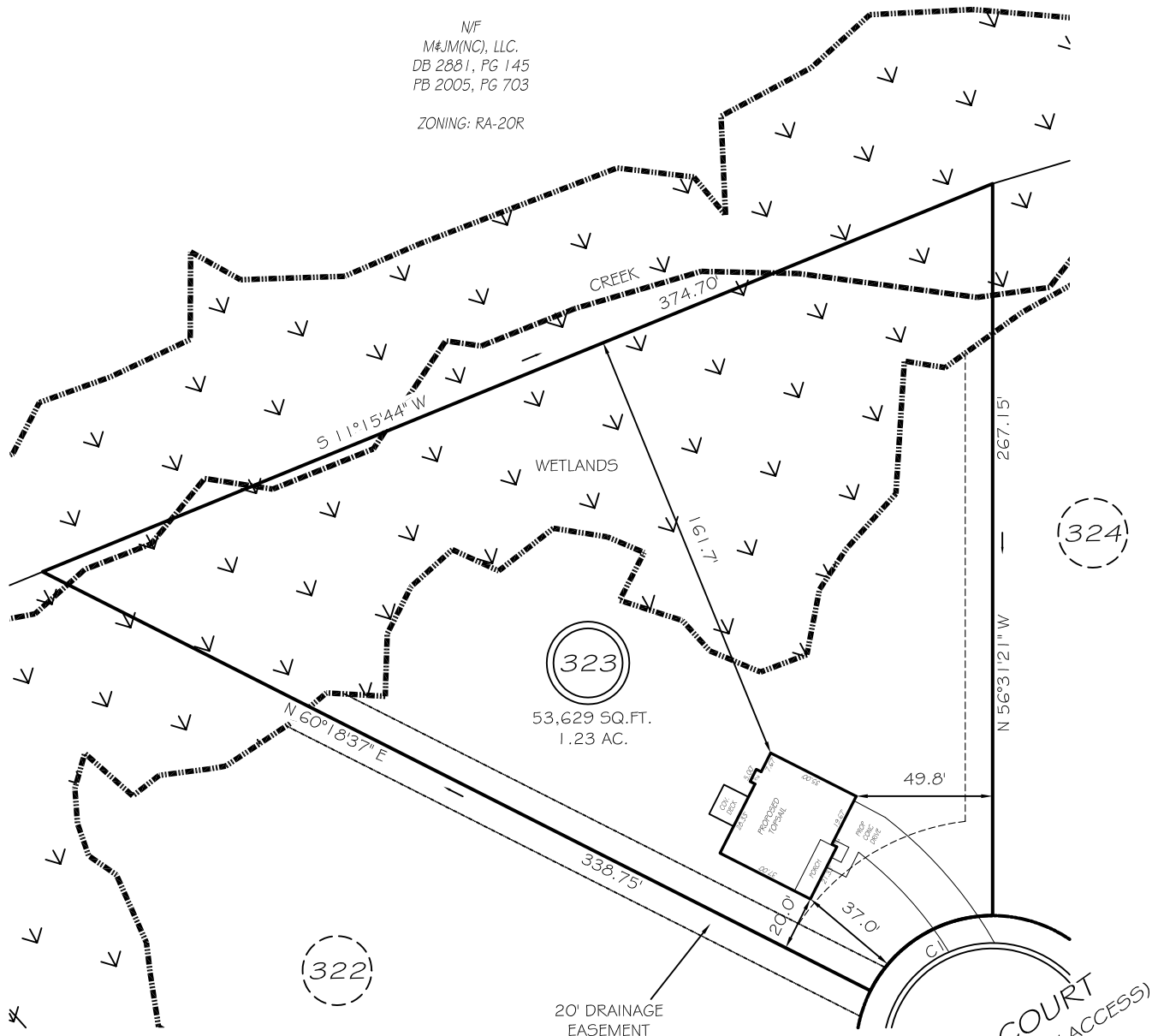


I, MICHAEL P. GRIFFIN, certify that under my direction and supervision this map was drawn from an actual field survey; that the error of closure of the survey as calculated by coordinates is 1: 10,000+; that the area shown hereon was calculated by coordinates.

Witness my hand and seal this day of MONTH 2021.

PLAT 2013 PG 346-347
HARNETT CO. REGISTRY

N/F
M&JM(NC), LLC.
DB 2881, PG 145
PB 2005, PG 703
ZONING: RA-20R



SETBACKS

FRONT	35'
REAR	25'
SIDE	10'
CORNER	20'

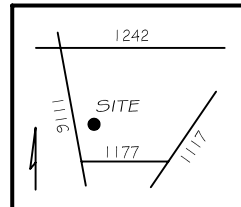
CIR=50.00' L=55.12' N01°53'38"E 52.37'

REVISION: COV. DECK ILO COV. PORCH 6/21/21
REVISION: MOVE & ROTATE 5/11/21

P R E L I M I N A R Y
NOT FOR RECORDATION,
SALES OR CONVEYANCE

LEGEND

EIP	EXISTING IRON PIPE	FES	FLARED END SECTION
IPS	IRON PIPE SET	WM	WATER METER
R/W	RIGHT OF WAY	CO	CLEAN OUT
N/F	NOW OR FORMERLY	FH	FIRE HYDRANT
EIS	EXISTING IRON STAKE	CB	CATCH BASIN



GRIFFIN LAND SURVEYING, INC.

P. O. BOX 148
FUQUAY-VARINA, NC 27526
(919) - 567 - 1963

PLOT PLAN

FOR

H & H HOMES

OAKMONT

LOT 323

KINGWOOD COURT

NORTH CAROLINA

HARNETT COUNTY BARBECUE TOWNSHIP

DRAWN BY NMF

DATE 4/23/21

CHECKED BY MPG

SCALE 1" = 60'