

BXUV - Fire Resistance Ratings - ANSI/UL 263 Certified for United States
BXUV7 - Fire Resistance Ratings - CAN/ULC-S101 Certified for Canada
Design No. V340

Bearing Wall Rating — 1 Hr Exposed to Fire on Either Face

Bearing Wall Rating - 2 Hr Rating Exposed to Fire on Interior Face and 1 Hr Rating Exposed to Fire on Exterior Face (See Item 2)

Bearing Wall Rating - 2 Hr Rating Exposed to Fire on Exterior Face and 1 Hr Rating Exposed to Fire on Interior Face (See Item 6)

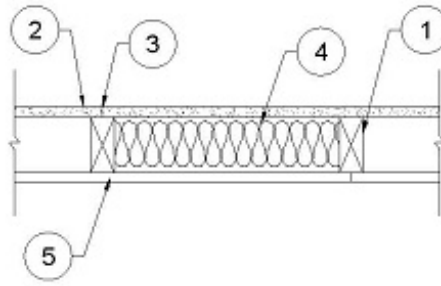
For Wood Studs, Finish Rating — 4 min (Exposed to Fire on Exterior Face)

Loaded Per 2012 NDS Supplement, ASD Method, Wall Braced by Sheathing, 40% of Design Load Applied to Wall

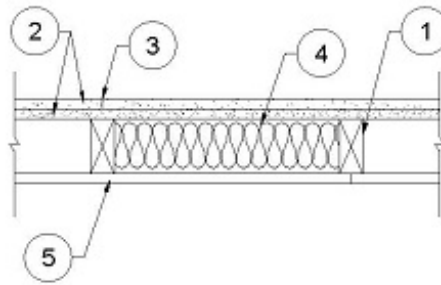
This design was evaluated using a load design method other than the Limit States Design Method (e.g., Working Stress Design Method). For jurisdictions employing the Limit States Design Method, such as Canada, a load restriction factor shall be used — See Guide [BXUV](#) or [BXUV7](#)

*** Indicates such products shall bear the UL or cUL Certification Mark for jurisdictions employing the UL or cUL Certification (such as Canada), respectively.**

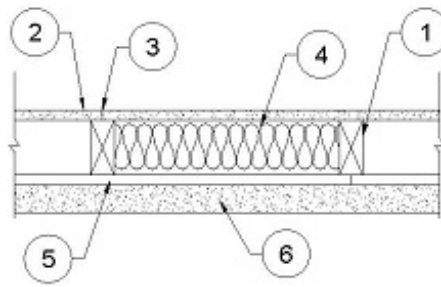
1-HOUR
(FIRE FROM EITHER SIDE)



2-HOUR INTERIOR
1-HOUR EXTERIOR



2-HOUR EXTERIOR
1-HOUR INTERIOR



1. **Wood Studs** — Nom 2 by 4 in., spaced 16 in. OC with double 2 by 4 top and single 2 by 4 in, bottom plates. Studs effectively firestopped.

2. **Gypsum Board*** — Any 5/8 in. thick UL Classified Gypsum Board that is eligible for use in Design Nos. L501, G512 or U305. **1 Hr rating** - Nom. 5/8 in. thick, 4 ft. wide, applied vertically, and nailed to studs and bearing plates 7 in. OC. with 6d cement coated nails, 1-7/8 in. long, 0.0915 in. shank diam. and 1/4 in. diam. head. Vertical joints centered over studs and staggered min. 1 stud cavity from the vertical joints of the building units (Item #5). **2 Hr rating** - two layers required, base layer nailed 6 in. OC. with 6d cement coated nails, 1-7/8 in. long, 0.0915 in. shank diam. and 1/4 in. diam. head. The face layer nailed to the studs and bearing plates over the base layer, 8 in. OC with 8d cement coated nails, 2-3/8 in. long, 0.113 in. shank diam. 9/32 in. diam. head. Vertical joints in adjacent layers (multilayer systems) staggered one stud cavity.

3. **Joints and Nail Heads** — Wallboard joints covered with tape and joint compound. Nail heads covered with joint compound.

4. **Batts and Blankets*** — Faced or unfaced mineral fiber insulation, 3-1/2 in. thick, minimum 2.87 pcf, friction fit in the wall cavity between stud, plates.

See **Batts and Blankets*** (BZJZ) category for names of Classified manufacturers.

5. **Building Units*** — Building units nailed to the wood framing, coating to studs, with 1-7/8 in. long, 6d nails, spaced 6 in. OC. on the perimeter and 12 in. OC. in the field. Vertical joints centered on studs. Horizontal joints backed with nom. 2 by 4 wood blocking.

LOUISIANA-PACIFIC CORP — Type Blazeguard 1-Side

LOUISIANA-PACIFIC CORP — Type LP FlameBlock 1-Side

6. **Exterior Facings** — Required for 2 Hour Rating on the Exterior Face. The following exterior facing shall be installed in accordance with the manufacturer's installation instructions:

6A. **Brick** — Brick veneer, minimum thickness of 3.4 inches, meeting the requirements of local code agencies. Brick veneer attached to the studs with corrugated metal wall ties attached to each stud with 8d cement coated nails, every sixth course of bricks and max 32 in. OC horizontally. One in. air space provided between brick veneer and sheathing.

*** Indicates such products shall bear the UL or cUL Certification Mark for jurisdictions employing the UL or cUL Certification (such as Canada), respectively.**