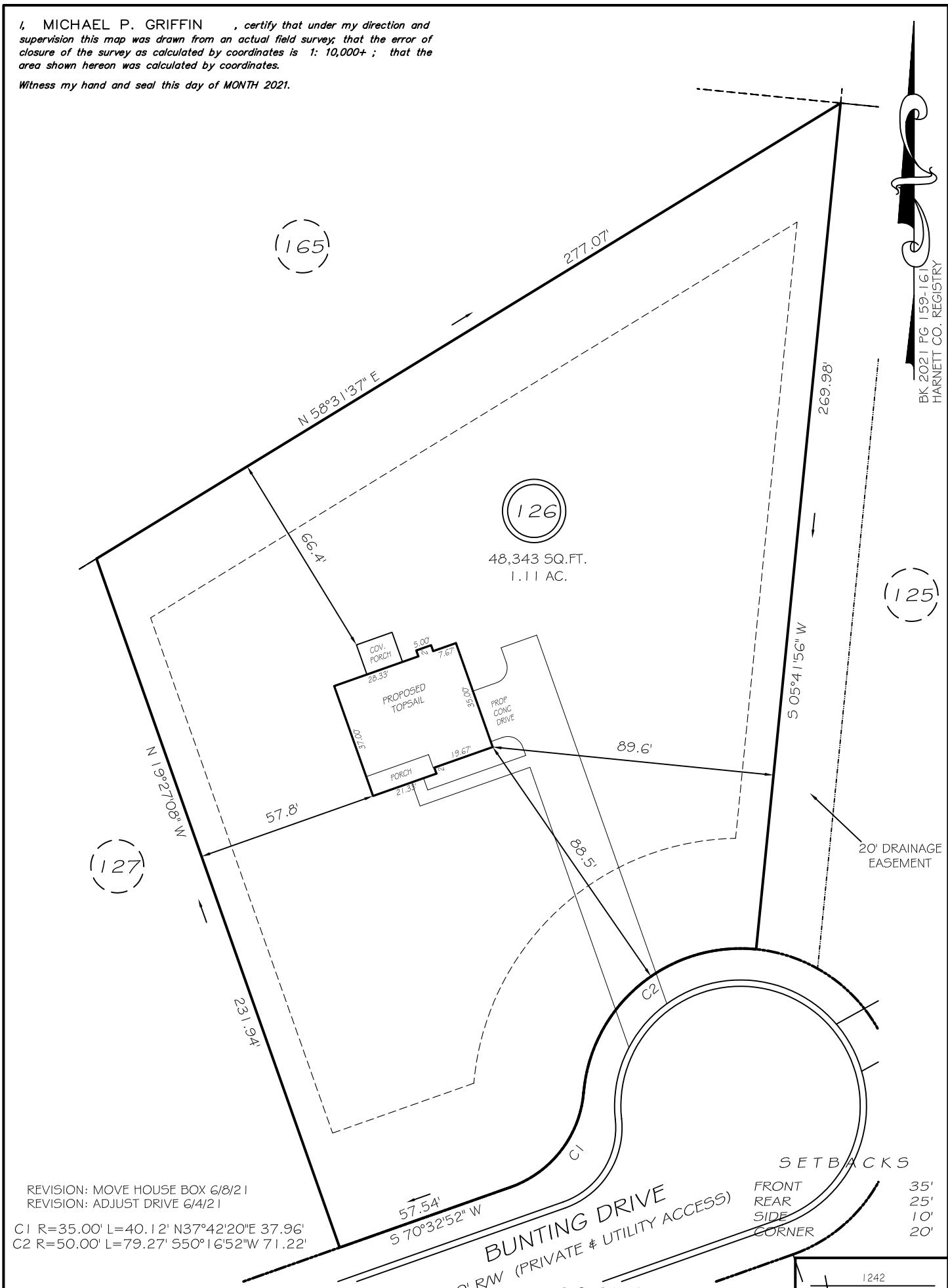


I, MICHAEL P. GRIFFIN, certify that under my direction and supervision this map was drawn from an actual field survey; that the error of closure of the survey as calculated by coordinates is 1: 10,000+; that the area shown hereon was calculated by coordinates.

Witness my hand and seal this day of MONTH 2021.



BK 2021 PG 1159-161
HARNETT CO. REGISTRY

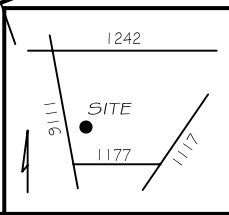


REVISION: MOVE HOUSE BOX 6/8/21
REVISION: ADJUST DRIVE 6/4/21
C1 R=35.00' L=40.12' N37°42'20"E 37.96'
C2 R=50.00' L=79.27' S50°16'52"W 71.22'

PRELIMINARY
NOT FOR RECORDATION,
SALES OR CONVEYANCE

LEGEND

EIP	EXISTING IRON PIPE	FES	FLARED END SECTION
IPS	IRON PIPE SET	WM	WATER METER
RAW	RIGHT OF WAY	CO	CLEAN OUT
N/F	NOW OR FORMERLY	FH	FIRE HYDRANT
EIS	EXISTING IRON STAKE	CB	CATCH BASIN



GLS GRIFFIN LAND SURVEYING, INC.
P. O. BOX 148
FUQUAY-VARINA, NC 27526
(919) - 567-1963

PLOT PLAN
FOR
H & H HOMES

OAKMONT
LOT 126
BUNTING DRIVE
NORTH CAROLINA
HARNETT COUNTY BARBECUE TOWNSHIP

DRAWN BY NMF	DATE 4/23/21
CHECKED BY MPG	SCALE 1" = 40'