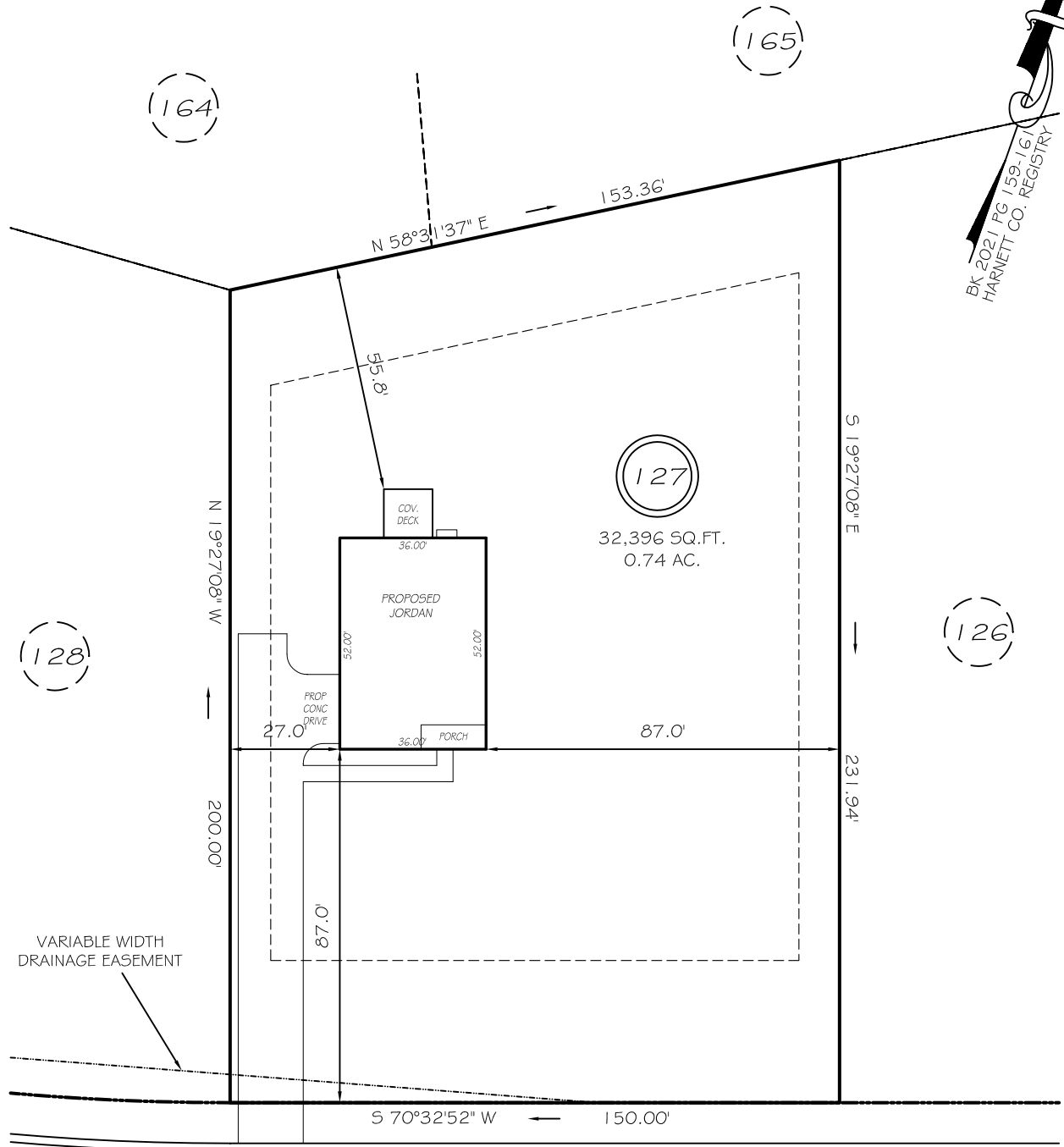


I, MICHAEL P. GRIFFIN, certify that under my direction and supervision this map was drawn from an actual field survey; that the error of closure of the survey as calculated by coordinates is 1: 10,000+; that the area shown hereon was calculated by coordinates.

Witness my hand and seal this day of MONTH 2021.



BK 2021 PG 159/161
HARNETT CO. REGISTRY

BUNTING DRIVE
50' RW (PRIVATE & UTILITY ACCESS)

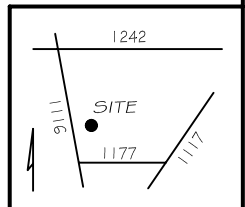
SETBACKS

| | |
|--------|-----|
| FRONT | 35' |
| REAR | 25' |
| SIDE | 10' |
| CORNER | 20' |

REVISION: COV. DECK/LOV. PORCH 6/16/21
REVISION: LEFT HAND SIDE LOAD; MOVE LEFT 6/4/21

LEGEND

| | | | |
|-----|---------------------|-----|--------------------|
| EIP | EXISTING IRON PIPE | FES | FLARED END SECTION |
| IPS | IRON PIPE SET | WM | WATER METER |
| R/W | RIGHT OF WAY | CO | CLEAN OUT |
| N/F | NOW OR FORMERLY | FH | FIRE HYDRANT |
| EIS | EXISTING IRON STAKE | CB | CATCH BASIN |



PRELIMINARY
NOT FOR RECORDATION,
SALES OR CONVEYANCE



GRIFFIN LAND SURVEYING, INC.

P. O. BOX 148
FUQUAY-VARINA, NC 27526
(919) - 567 - 1963

PLOT PLAN

FOR

H & H HOMES

OAKMONT

LOT 127

BUNTING DRIVE

NORTH CAROLINA

HARNETT COUNTY BARBECUE TOWNSHIP

DRAWN BY NMF

DATE 4/23/21

CHECKED BY MPG

SCALE 1" = 40'