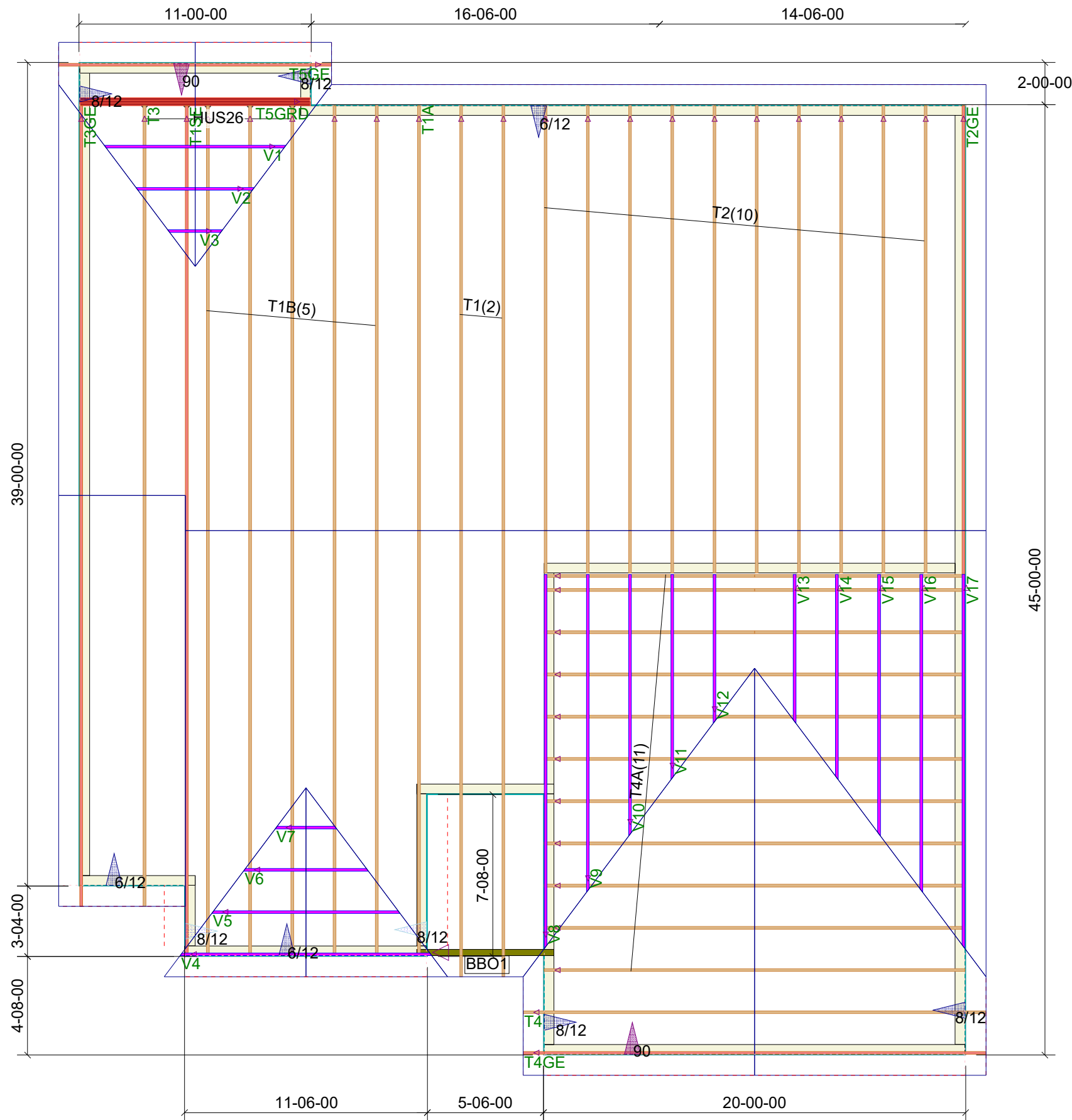


THIS LAYOUT IS TO BE USED AS A TRUSS PLACEMENT GUIDE ONLY.  
PLEASE REFER TO BUILDING PLANS FOR BUILDING CONSTRUCTION AND DETAILS,  
SUCH AS PLUMBING OR DUCT DROPS.

PROPOSED DESIGN-  
NOT FOR  
CONSTRUCTION



**McBride Resd  
Roof Trusses  
2' OC, 1' OH**

Truss Connector Total List		
Manuf	Product	Qty
USP	HUS26	5

- Notes:
- Exterior dimensions shown are assumed to be:
    - ☐ Out-to-out of stud
    - ☒ Out-to-out of sheathing
  - Adjust truss locations as needed for plumbing and mechanical clearance. Unless otherwise noted, trusses may be shifted as long as O.C. spacing shown is not exceeded.
  - Do not cut, drill, or otherwise damage any part of any truss without prior approval from Peak Truss.
  - Do not approve drawings if any information herein is unclear. Once ordered trusses will be fabricated as approved.
  - Please contact Peak Truss Builders with any questions. We are available to help any way we can. We can be reached at 919-545-5555 or sales@peaktruss.com

Roof Truss Loading per 2018 NC Residential Code

Top Chord Live Load	20# PSF
Top Chord Dead Load	10# PSF
Bottom Chord Live Load	0# PSF
Bottom Chord Dead Load	10# PSF

Trusses are designed for additional storage load wherever a 42"x24" box will fit between the webs.

△ - This symbol denotes left end of truss as shown on truss drawings

● - Approximate location of toilet drop. Builder please confirm.

Truss connections by others:

- Ⓝ - Nailed
- Ⓛ - Ledger

Job #

Q-2101320

McBride Resd

NC

Date Quoted:

Designer:

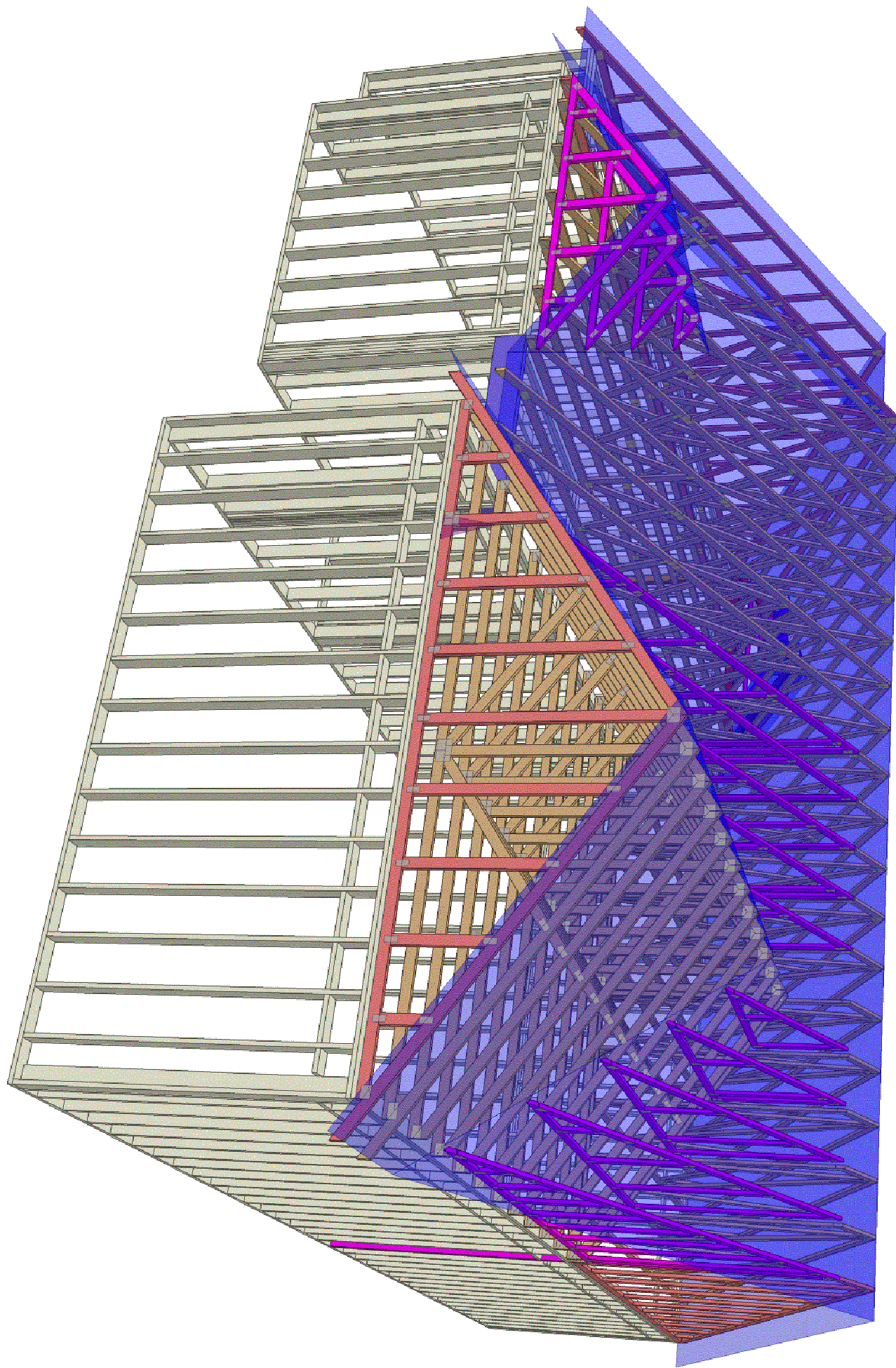
Nate Donaldson

Guy C Lee - Clayton  
151 Hwy 42 E  
Clayton, NC  
27520

Peak Truss  
Builders, LLC



PO Box 340, New Hill, NC 27562



**Peak Truss  
Builders, LLC**

PO Box 340, New Hill, NC 27562

Guy C Lee - Clayton  
151 Hwy 42 E  
Clayton, NC  
27520

Date Quoted:

Designer:  
**Nate Donaldson**

McBride Resd

NC

Job #

**Q-2101320**