

JORDAN

JORDAN REVISION LIST - STRUCTURAL:

- 1.) CODE UPDATE TO SCRC 2018 (1-20)
- 2.) CHANGE 2X6 EXTERIOR WALLS TO 2X4 EXTERIOR WALLS. (3-5-20)
- 3.) ADDED BASEMENT PLAN WHICH EXTENDS GARAGE FRONT 2'-0". (5-1-20)

JORDAN REVISION LIST - ARCHITECTURAL:

- 1.) UPDATED PLANS: 7'-0" HDR HGT. ADDED 2 HOSE BIBB LOC'NS, CHANGE MASTERS TO OWNERS, CHANGE SOFFITS TO C.O., CHANGE MASTERS BATH TO OWNER'S BATH 1, CHANGED POWDER TO PDR 1, AND CHANGED BATH TO BATH 2. (11-4-19)
- 2.) ADDED ROOF VENT CALCULATIONS FOR ELEV. A AND B. (12-2-19)
- 3.) UPDATED CUTSHEETS FOR THE GARAGE RIGHT. (12-13-19)
- 4.) CHANGED FIREPLACE FROM STANDARD TO OPTIONAL. (5-1-20)
- 5.) REMOVE GLASS INSERTS FROM GARAGE WINDOWS AND REMOVE METAL ACCESSORIES. (5-1-20)
- 6.) UPDATED CUTSHEETS TO MEET H&H STANDARDS. (5-1-20)
- 7.) ADDED OPTIONAL GLASS INSERTS TO TOP WINDOWS ONLY TO GARAGE DOORS. (5-1-20)
- 8.) CHANGED THE CORNERBOARDS FROM 6" TO 4". (5-1-20)
- 9.) REMOVED OPTIONAL KITCHEN CAN AND REPLACED WITH FLUORESCENT LIGHT IN THE KITCHEN. (5-1-20)
- 10.) CHANGE LOCATION OF THE HOSE BIBBS. (5-1-20)
- 11.) ADDED OPTIONAL GAS LINE NOTE AT PATIO. (5-1-20)
- 12.) CHANGED REFRIGERATOR, WASHER, AND DRYER TO OPTIONAL COMPONENTS. (5-1-20)
- 13.) CHANGE COFFERED CEILING IN DINING TO OPTIONAL WITH DETAIL. (5-1-20)
- 14.) ADDED WEATHERING STRIPPING AT 2'-0" X 4'-0" SOLID DOOR. (5-1-20)
- 15.) ADDED NOTE TO REMOVE (1)-3'-0" 5'-0" WINDOW FOR BEDROOM #5 OPTION. (5-1-20)
- 16.) REMOVED GRIDS FROM SIDE AND REAR WINDOWS. (5-1-20)
- 17.) CHANGED 3'-0" 5'-0" WINDOW IN LOFT TO STANDARD. (5-1-20)
- 18.) UPDATED STONE HATCH ON ELEVATIONS. (5-1-20)
- 19.) REMOVED ALL TV OUTLETS, PHONE OUTLETS, AND ELECTRICAL OUTLETS EXCEPT FLOOR OUTLETS. (5-1-20)
- 20.) ADDED CO₂ DETECTORS PER LOCATE CODE. (5-1-20)
- 21.) CHANGED CEILING FANS TO OPTIONAL AND CHANGE THE LIGHTS TO PRE-WIRE. (5-1-20)
- 22.) ADDED CRICKETS TO FRONT ELEVATIONS. (5-1-20)
- 23.) UPDATED THE ELEVATION COACH LIGHTS TO MATCH THE ELECTRICAL PLANS. (5-1-20)
- 24.) CREATED ADDITIONAL SHEETS FOR FIRST FLOOR AND SECOND FLOOR OPTIONS (A4.1, A5.1, A6.1, A7.1, E-3, AND E-4) AND REMOVED OPTIONS FROM BASE SHEETS. (5-1-20)
- 25.) ADDED DIMENSION FOR WATER TABLE TO FINISH FLOOR ON ELEVATION. (5-1-20)
- 26.) ADDED INSULATION DETAIL TO FIRST AND SECOND FLOOR SHEETS. (5-1-20)
- 27.) ADDED OPTIONAL (3) RECESS LIGHTING AND SWITCHES IN FAMILY ROOM. (5-1-20)
- 28.) ADDED SHEET 7.0 FOR FLOOR PLAN EXTERIOR SURFACES LAYOUTS. (5-1-20)
- 28.) CREATED OWNER'S BATH 2 AND OWNER'S BATH 3. (5-1-20)
- 28.) ADDED SHOWER DETAIL FOR OPTIONAL OWNER'S BATH 3. (5-1-20)
- 29.) UPDATED CUTSHEETS. (5-1-20)
- 30.) CHANGED OWNER'S BATH #3 WINDOW FROM 2'-0" 2'-0" WINDOW TO 2'-0" 4'-0" TEMP. (5-1-20)
- 31.) ADDED PATIO W/ EXTENDED PATIO OPTION. (5-1-20)
- 32.) ADDED OPTIONAL BASEMENT PLAN. (5-1-20)
- 33.) ADDED CHANGES TO OPTIONS WHEN BASEMENT OPTION SELECTED. (5-1-20)
- 34.) REVISED SHUTTERS ON ELEVATIONS B TO BE B&B (5-1-20)
- 35.) REMOVED HARDWARE FROM SHUTTERS ON ELEVATION C (5-1-20)
- 36.) REMOVED LIGHT OVER KITCHEN SINK (7-8-20)
- 37.) REMOVED NOTE "KEYLESS" FROM GARAGE CHANGED TO STANDARD CEILING MOUNTED LIGHT (7-8-20)
- 38.) CHANGED STANDARD LIGHT IN KITCHEN FROM 2-BULB FLUORESCENT TO 3 BULB CEILING MOUNT (7-8-20)
- 39.) CHANGED SWING OF SERVICE DOOR IN GARAGE TO OUT SWING (SEE SHEET A6.1) (7-8-20)
- 40.) REMOVED LIGHT IN SECONDARY BATH OVER TUB/SHOWER COMBO (7-8-20)
- 41.) REMOVED "RECESSED ENTERTAINMENT BOX" OVER FIREPLACE (7-8-20)

OKM 12/1 Buyer Marked Plan

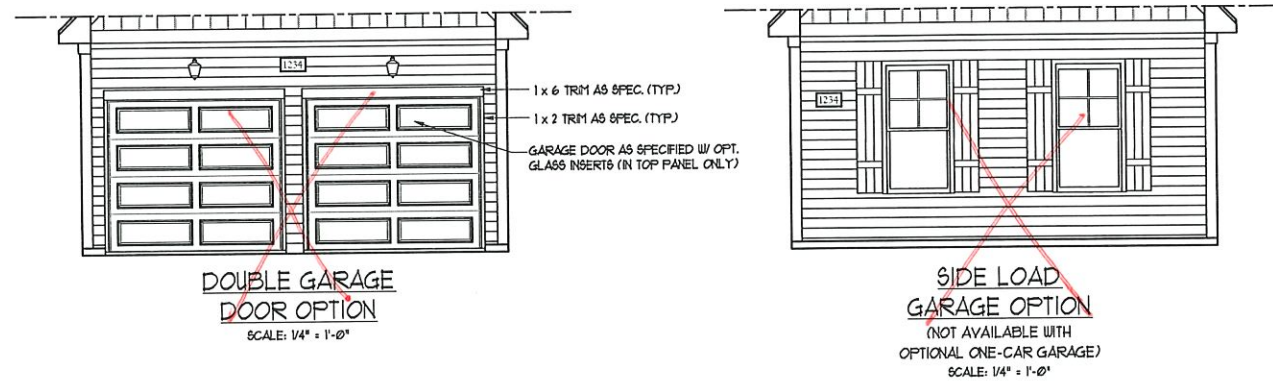
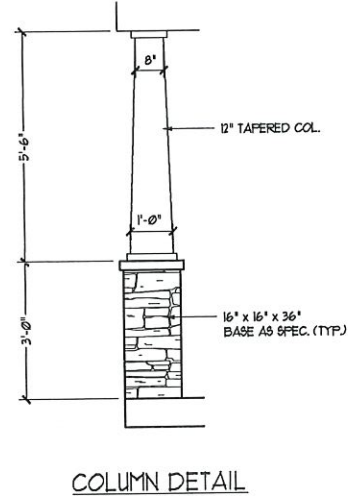
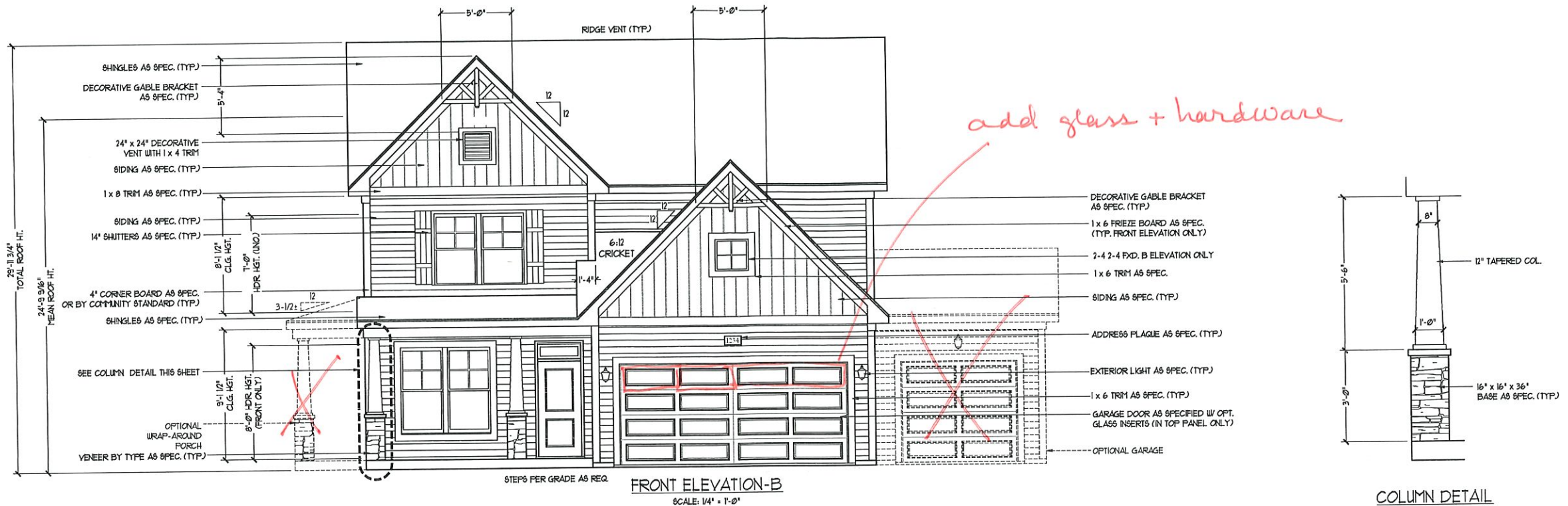


COVER SHEET

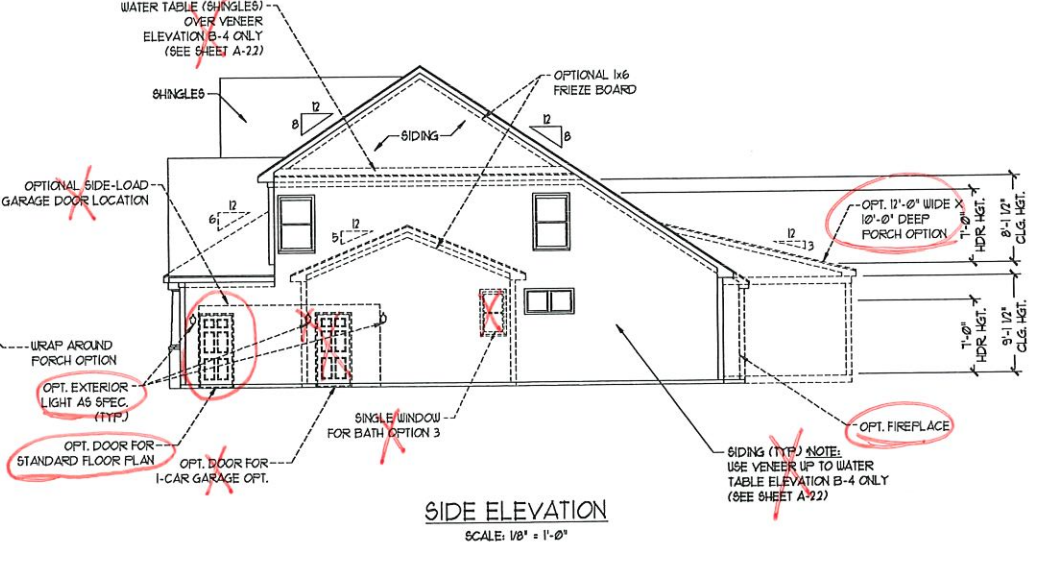
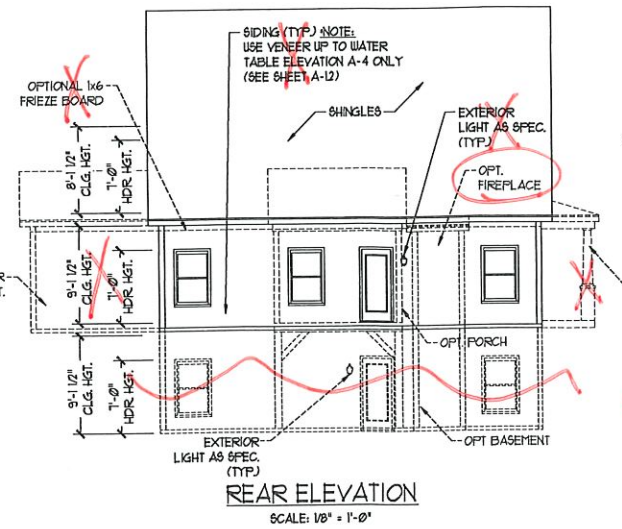
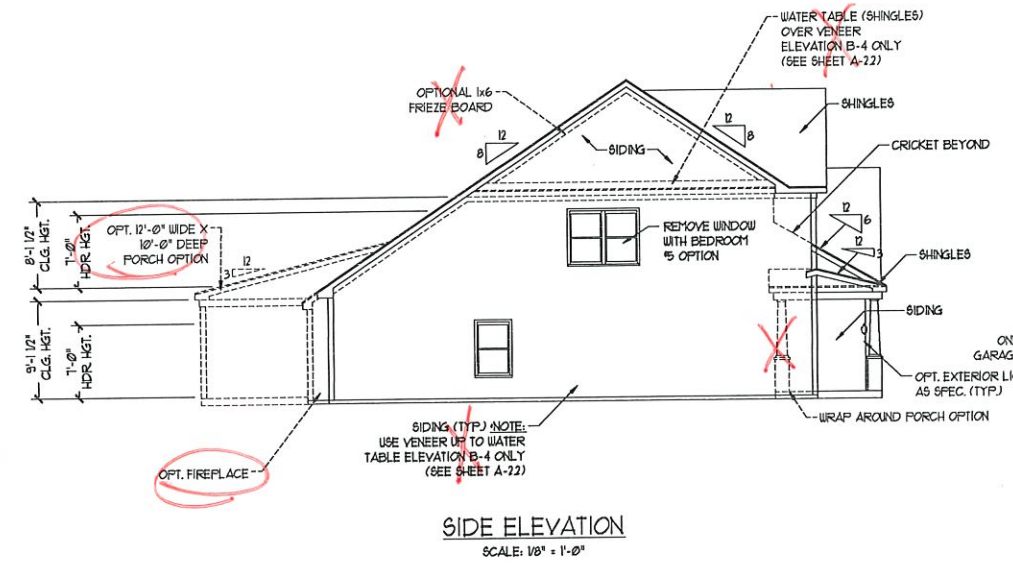
H&H HOMES
JORDAN

DATE: MARCH 15, 2019
REV: MAY 01, 2020
DRAWN BY:
ENGINEERED BY:
REVIEWED BY:

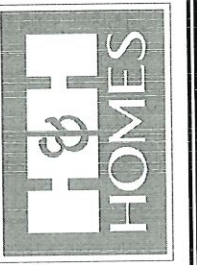
CS



NOTE:
SEE SHEET A-2.1 FOR BRICK FRONT ELEVATIONS
SEE SHEET A-2.2 FOR STONE FRONT ELEVATIONS
SEE SHEET A-2.3 (ALL BRICK) ELEVATIONS



J.S. THOMPSON ENGINEERING, INC.
605 WADE AVE. SUITE 104
RALEIGH, NC 27608
PHONE: (919) 789-9919
FAX: (919) 789-9921
N.C. LICENSE NO. C-1733



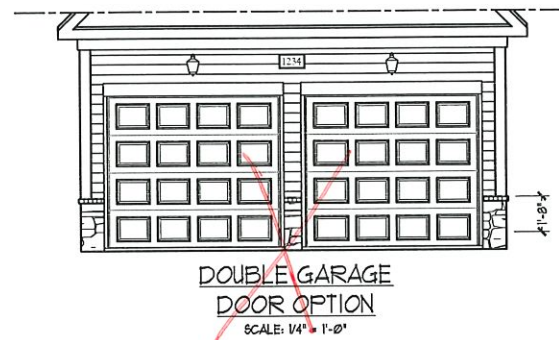
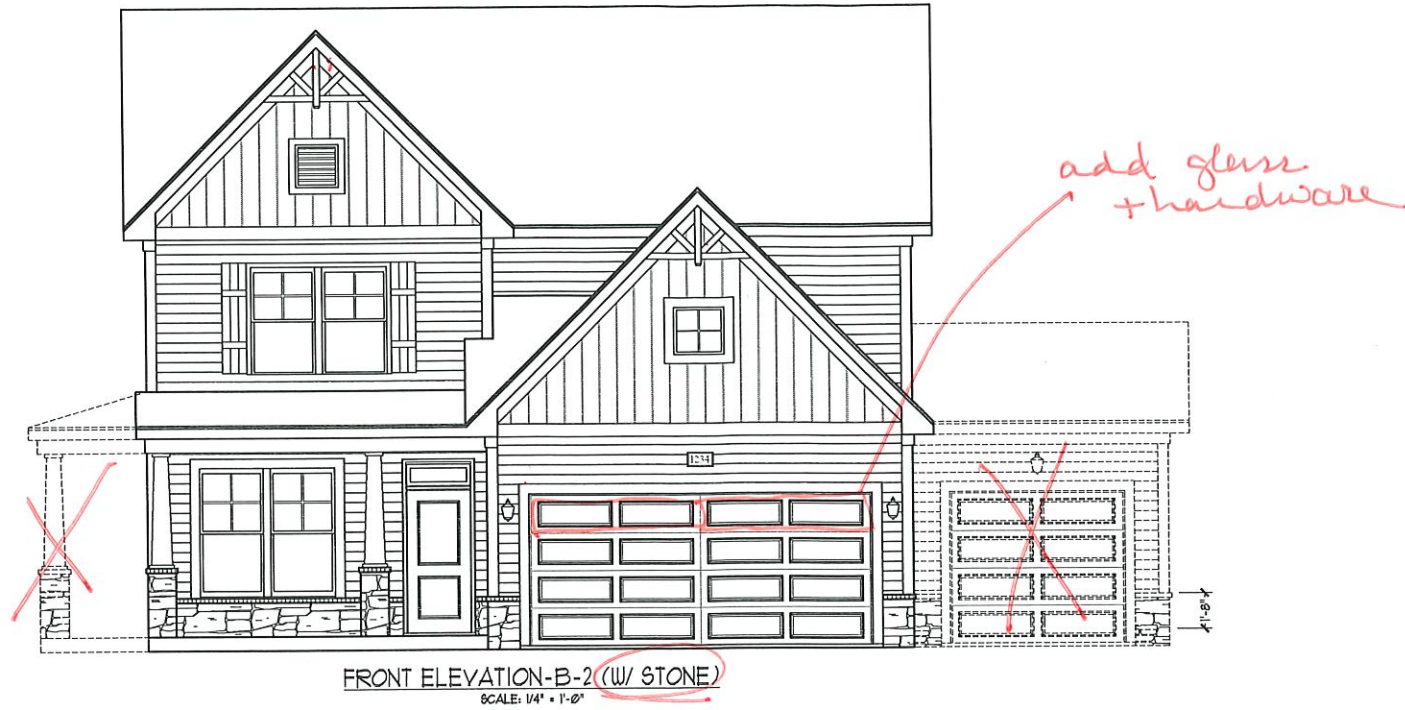
PRICES, PROMOTIONS, INCENTIVES, FEATURES, OPTIONS, FLOOR PLANS, ELEVATIONS, DESIGNATIONS AND DIMENSIONS ARE SUBJECT TO CHANGE WITHOUT NOTICE. SQUARE FOOTAGE AND DIMENSIONS ARE ESTIMATED. LOCATION OF HOUSE ON LOT WILL BE DETERMINED BY THE SITE PLAN AND PLOT PLAN. FLOOR PLANS AND ELEVATION RENDERINGS ARE ARTIST CONCEPTIONS. FLOOR PLANS ARE THE COPYRIGHTED PROPERTY OF H&H HOMES. ALL RIGHTS ARE RESERVED. ADAPTATION OR DISPLAY OF THE PLANS IS STRICTLY PROHIBITED. SEE NEW HOME SALES CONSULTANT FOR CURRENT DETAILS. COPYRIGHT © 2019 H&H HOMES

H&H HOMES, INC.
JORDAN

DATE: MARCH 15, 2019
REV.: MAY 01, 2020
SCALE: AS NOTED
DRAWN BY:
ENGINEERED BY:
REVIEWED BY:

B-1 ELEVATIONS
A-2

CSM



BRICK OR STONE
LEDGE AS SPEC.

J.S. THOMPSON
ENGINEERING, INC.
608 WADE AVE., SUITE 104
RALEIGH, NC 27605
PHONE: (919) 789-9919
FAX: (919) 789-9921
N.C. LICENSE NO. C-1133



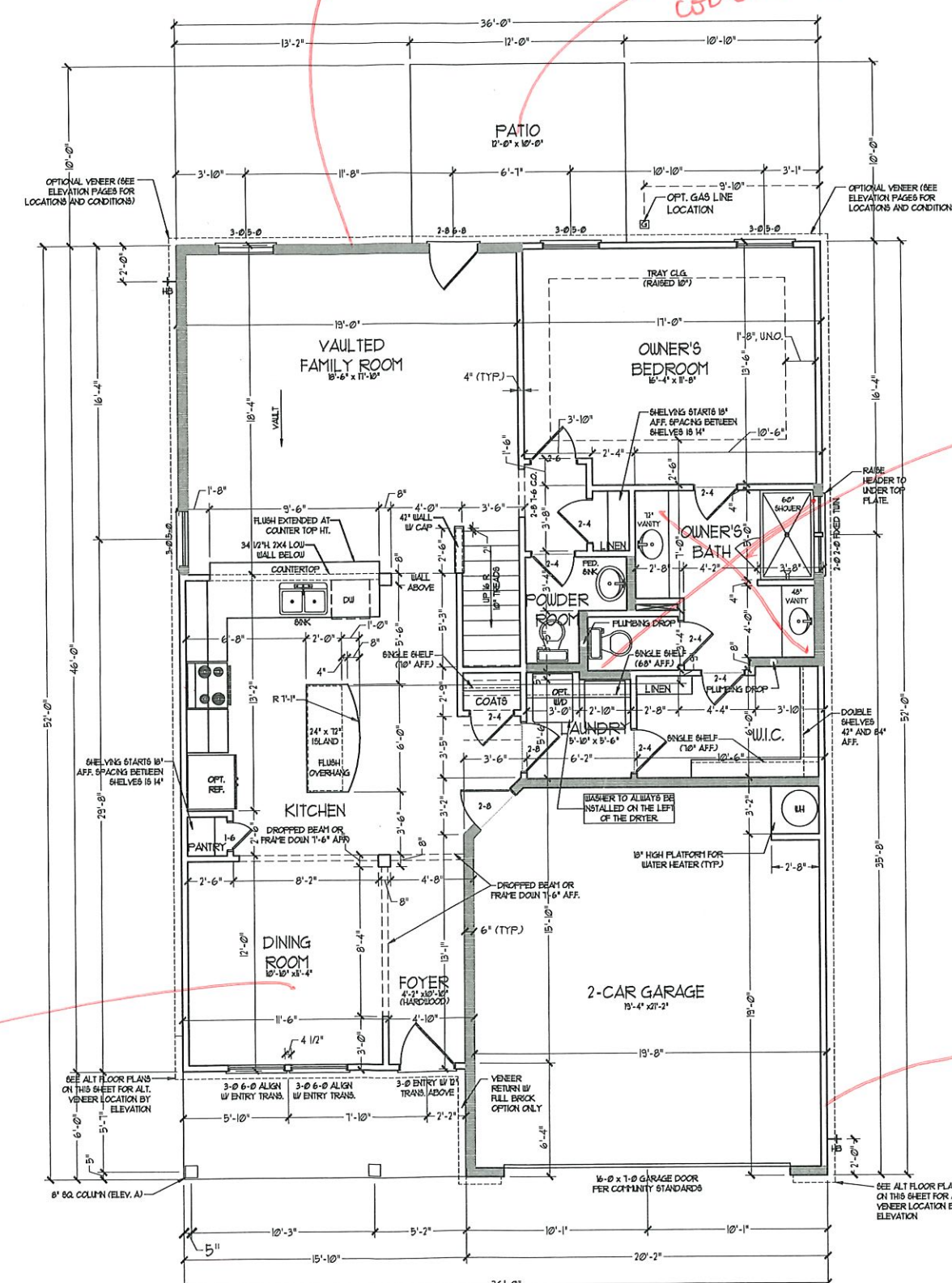
PRICES, PRODUCTIONS, INCENTIVES, FEATURES, OPTIONS, FLOOR PLANS, ELEVATIONS, DESIGNS, MATERIALS AND DIMENSIONS ARE SUBJECT TO CHANGE WITHOUT NOTICE AND MAY VARY IN ACTUAL CONSTRUCTION. ACTUAL POSITION OF HOUSE ON LOT WILL BE DETERMINED BY THE SITE PLAN AND PLOT PLAN. FLOOR PLANS AND ELEVATIONS ARE THE PROPERTY OF H&H HOMES, INC. REPRODUCTION, ADAPTATION, OR DISPLAY OF THE PLANS IS STRICTLY PROHIBITED. SEE NEW HOME SALES CONSULTANT FOR CURRENT DETAILS. COPYRIGHT © 2019 H&H HOMES

H&H HOMES, INC.
JORDAN

DATE: MARCH 15, 2019
REV.: MAY 01, 2020
SCALE: AS NOTED
DRAWN BY:
ENGINEERED BY:
REVIEWED BY:
B-2 & B-3
ELEVATIONS
WITH STONE

DM A-2.1

see fireplace
see covered porch



see coffered ceiling

see Owner's Bath Opt. #2

see service down

SEE PARTIAL FLOOR PLANS ON SHEET A-5.2 FOR CHANGES TO THE EXTERIOR VENEER FOR ALL ELEVATIONS.

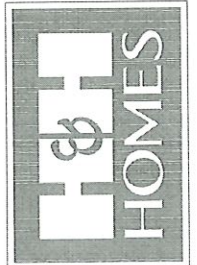
FIRST FLOOR PLAN
(A-1, B-1 AND C-1)

SQUARE FOOTAGE	
1st FLOOR:	1581 SQ. FT.
2nd FLOOR:	1051 SQ. FT.
TOTAL:	2468 SQ. FT.
GARAGE:	435 SQ. FT.
FRONT PORCH:	55 SQ. FT.
STD. REAR PATIO:	100 SQ. FT.
1st FLOOR OPTIONS	
OPT. FIREPLACE:	10 SQ. FT.
2nd FLOOR OPTIONS	
OPT. WINDOW BOX AT BEDROOM 2:	9 SQ. FT.
UNHEATED OPTIONS	
OPT. BASEMENT:	1710 SQ. FT.
OPT. 1-CAR GARAGE:	240 SQ. FT.
OPT. REAR COVERED PORCH:	100 SQ. FT.
OPT. 11'-0" X 10'-0" PATIO:	100 SQ. FT.

SQUARE FOOTAGE (w/ FULL BRICK)	
1st FLOOR:	1405 SQ. FT.
2nd FLOOR:	1094 SQ. FT.
TOTAL:	2499 SQ. FT.
GARAGE:	445 SQ. FT.
FRONT PORCH:	55 SQ. FT.
STD. REAR PATIO:	100 SQ. FT.
1st FLOOR OPTIONS	
OPT. FIREPLACE:	14 SQ. FT.
2nd FLOOR OPTIONS	
WINDOW BOX AT BEDROOM 2 (ELEV. C ONLY):	9 SQ. FT.
UNHEATED OPTIONS	
OPT. BASEMENT:	1710 SQ. FT.
OPT. 1-CAR GARAGE:	250 SQ. FT.
OPT. REAR COVERED PORCH:	100 SQ. FT.
OPT. 11'-0" X 10'-0" PATIO:	100 SQ. FT.

NOTE: ALL EXTERIOR WALLS AND ATTIC WALLS ARE TO BE 2 x 4 @ 16" O.C. (MIN). ALL INTERIOR LOAD BEARING WALLS ARE TO BE 2 x 4 @ 16" O.C. (MIN) AND NON-LOAD BEARING INTERIOR WALLS ARE TO BE 2 x 4 @ 24" O.C. (MIN).
2x6 WALL
SHADE WALLS ARE TO BE 2 x 6 @ 16" O.C. (LOAD BEARING) OR 2 x 6 @ 24" O.C. (NON-LOAD BEARING) RES/ANALYSIS OF EXTERIOR WALL CONDITION

J.S. THOMPSON
ENGINEERING, INC.
600 WADE AVE., SUITE 104
RALEIGH, NC 27605
PHONE: (919) 780-9119
FAX: (919) 780-9221
N.C. LICENSE NO. C1733

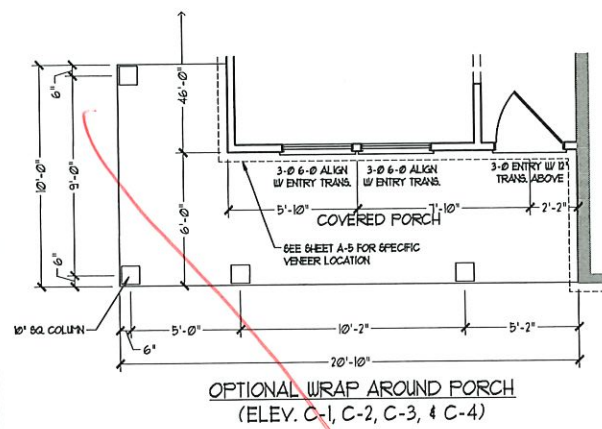


PRICES, PROMOTIONS, INCENTIVES, FEATURES, OPTIONS, FLOOR PLANS, ELEVATIONS, DESIGN, MATERIALS AND DIMENSIONS ARE SUBJECT TO CHANGE WITHOUT NOTICE AND MAY VARY IN ACTUAL CONSTRUCTION. ACTUAL POSITION OF HOUSE ON LOT WILL BE DETERMINED BY THE SITE PLAN AND PLOT PLAN. FLOOR PLANS AND ELEVATION RENDERINGS ARE ARTIST CONCEPTIONS AND NOT TO BE USED FOR CONSTRUCTION, REPRODUCTION, ADAPTATION, OR DISPLAY OF THE PLANS IS STRICTLY PROHIBITED. SEE NEW HOME SALES CONSULTANT FOR CURRENT DETAILS. COPYRIGHT © 2019 H&H HOMES

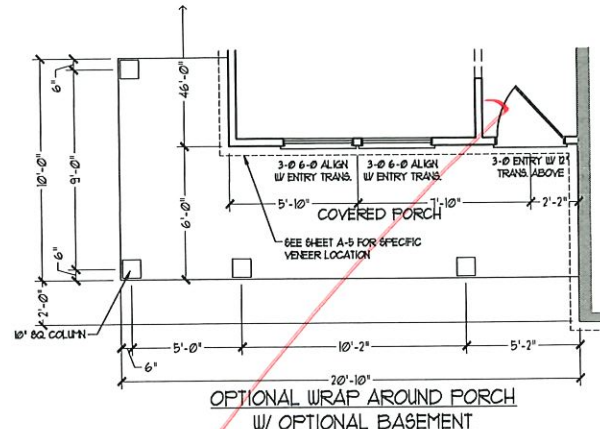
H&H HOMES, INC.
JORDAN

DATE: MARCH 15, 2019
REV.: MAY 01, 2020
SCALE: 1/4" = 1'-0"
DRAWN BY:
ENGINEERED BY:
REVIEWED BY:

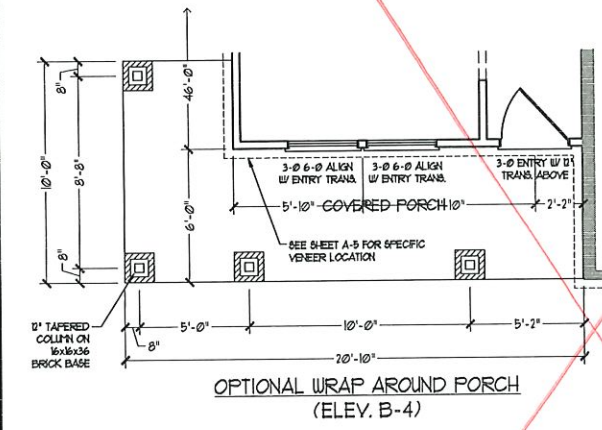
FIRST FLOOR PLAN
A-6



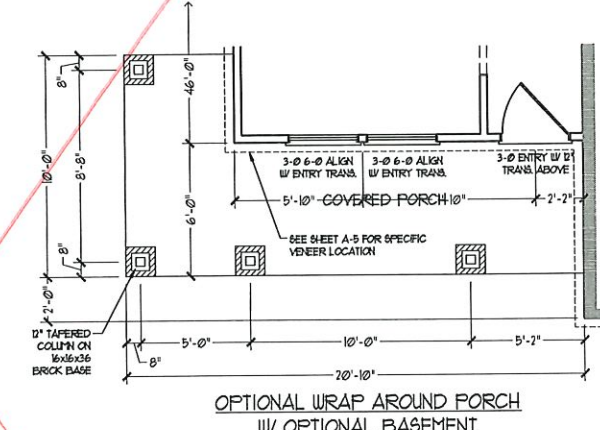
OPTIONAL WRAP AROUND PORCH
(ELEV. C-1, C-2, C-3, & C-4)



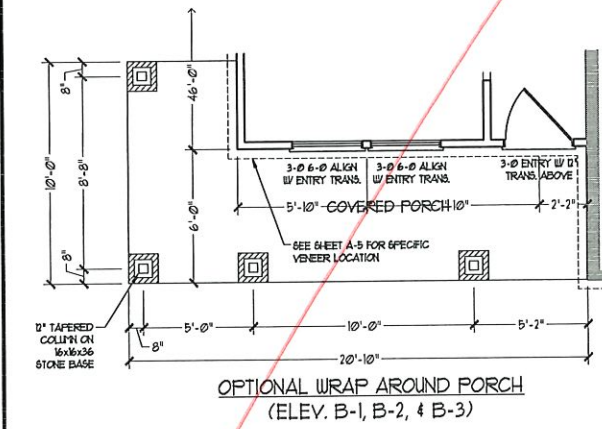
OPTIONAL WRAP AROUND PORCH
W/ OPTIONAL BASEMENT
(ELEV. C-1, C-2, C-3, & C-4)



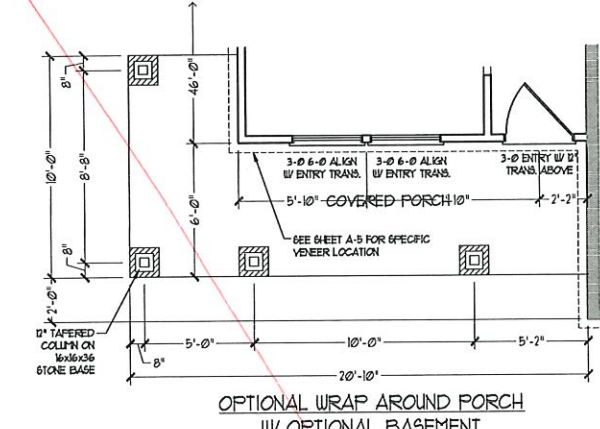
OPTIONAL WRAP AROUND PORCH
(ELEV. B-4)



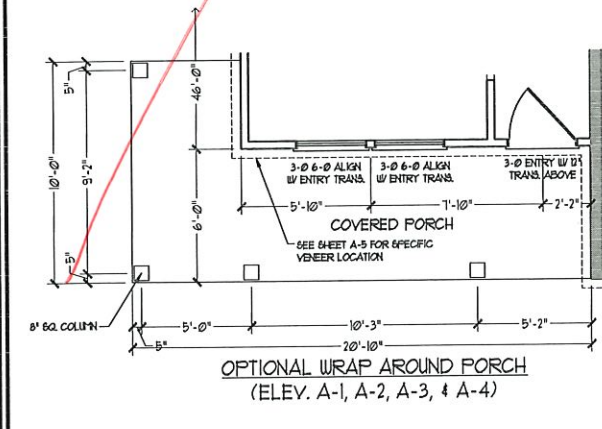
OPTIONAL WRAP AROUND PORCH
W/ OPTIONAL BASEMENT
(ELEV. B-4)



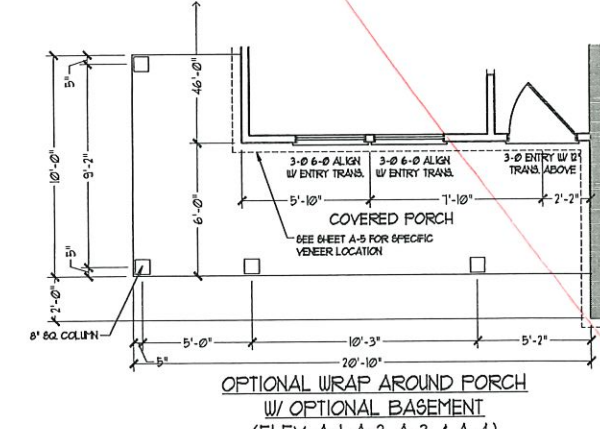
OPTIONAL WRAP AROUND PORCH
(ELEV. B-1, B-2, & B-3)



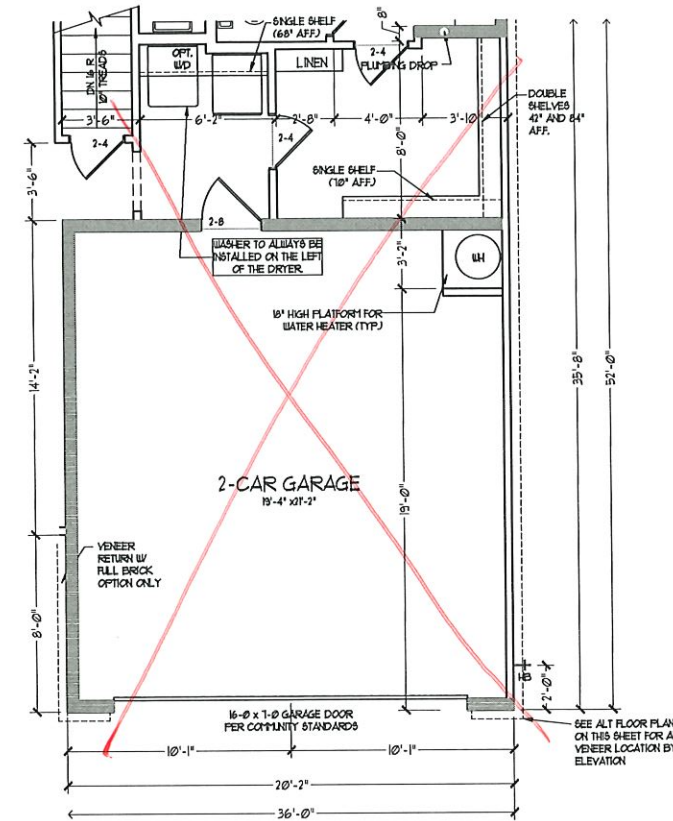
OPTIONAL WRAP AROUND PORCH
W/ OPTIONAL BASEMENT
(ELEV. B-1, B-2, & B-3)



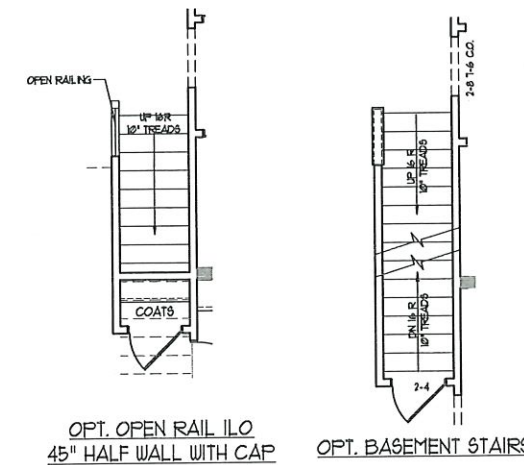
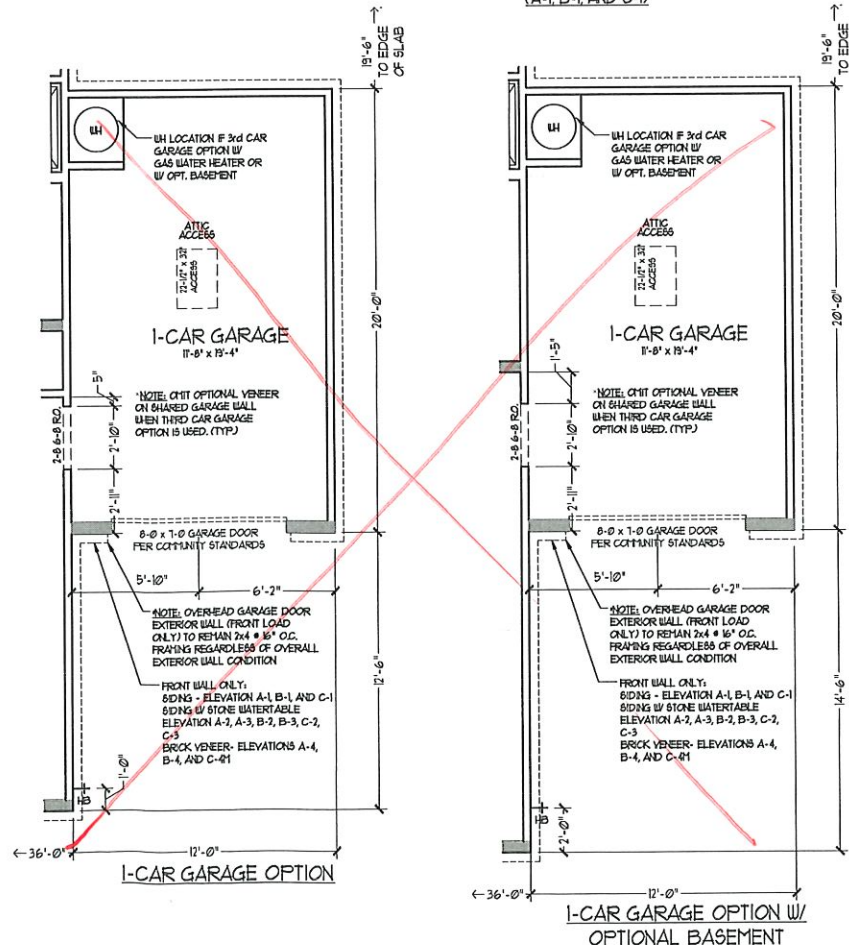
OPTIONAL WRAP AROUND PORCH
(ELEV. A-1, A-2, A-3, & A-4)



OPTIONAL WRAP AROUND PORCH
W/ OPTIONAL BASEMENT
(ELEV. A-1, A-2, A-3, & A-4)



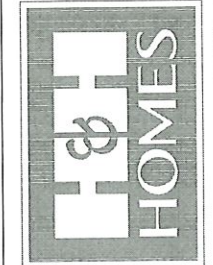
2-CAR GARAGE W/
OPTIONAL BASEMENT
(A-1, B-1, AND C-1)



OPT. OPEN RAIL 45° HALF WALL WITH CAP

OPT. BASEMENT STAIRS

J.S. THOMPSON ENGINEERING, INC.
606 WADE AVE., SUITE 104
FALEIGH, NC 27605
PHONE: (919) 289-9119
FAX: (919) 289-9221
N.C. LICENSE NO. C-11733



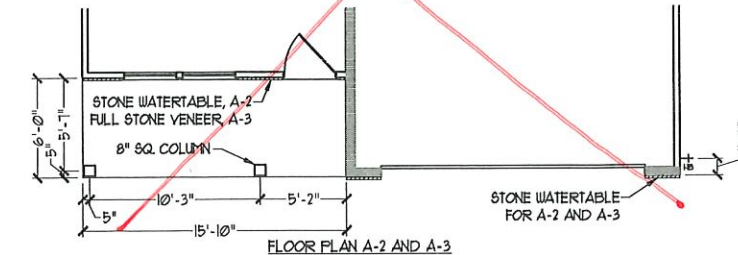
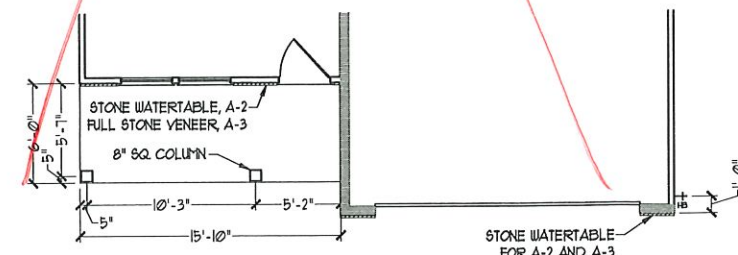
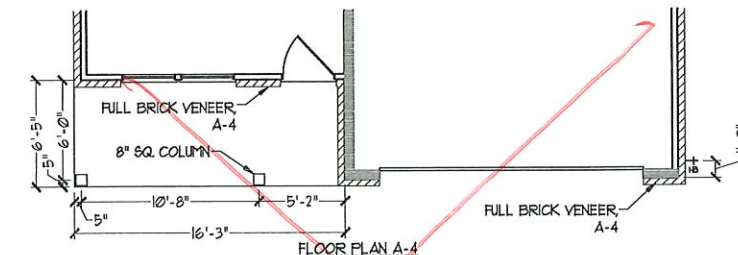
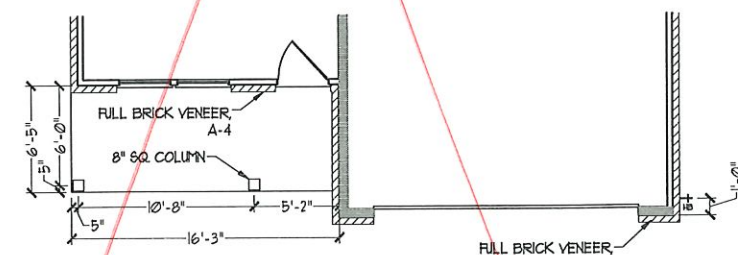
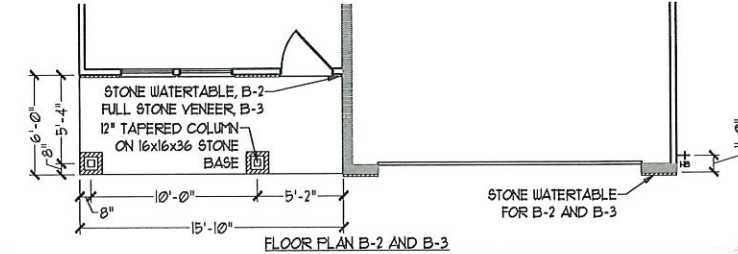
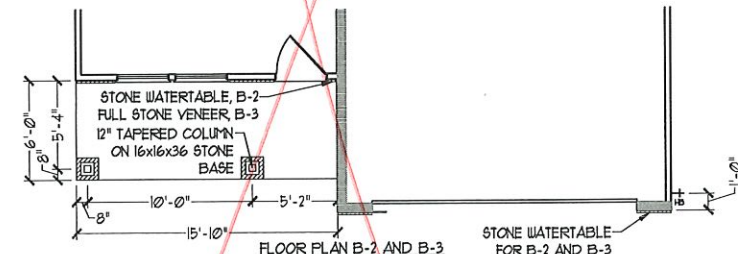
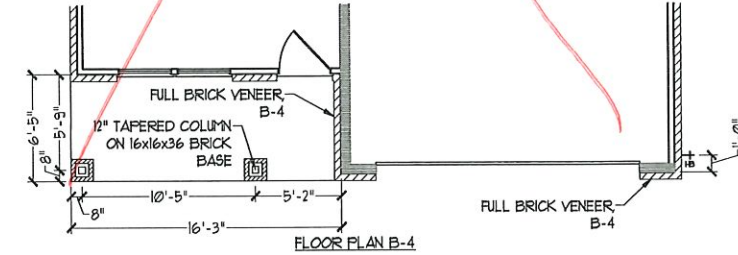
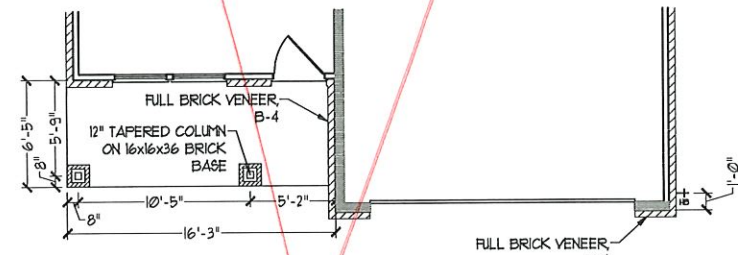
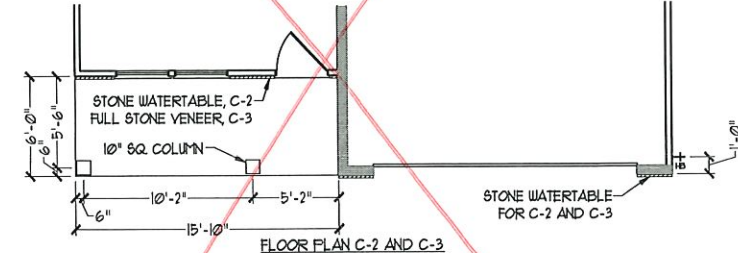
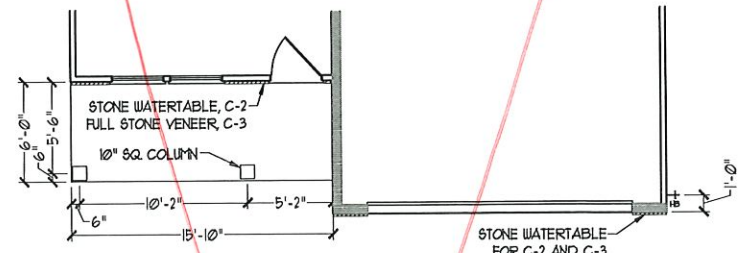
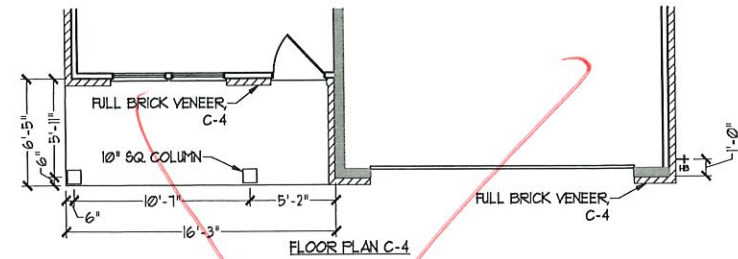
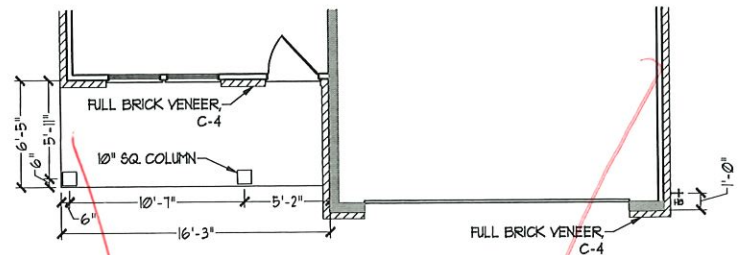
PRICES, PROMOTIONS, INCENTIVES, FEATURES, OPTIONS, FLOOR PLANS, ELEVATIONS, DESIGN, MATERIALS AND DIMENSIONS ARE SUBJECT TO CHANGE WITHOUT NOTICE AND MAY VARY IN ACTUAL CONSTRUCTION. ACTUAL POSITION OF HOUSE ON LOT WILL BE DETERMINED BY THE SITE PLAN AND PLOT PLAN. FLOOR PLANS AND ELEVATIONS ARE THE PROPERTY OF H&H HOMES, INC. REPRODUCTION, ADAPTATION OR DISPLAY OF THE PLANS IS STRICTLY PROHIBITED. SEE NEW HOME SALES CONSULTANT FOR CURRENT DETAILS. COPYRIGHT © 2019 H&H HOMES

H&H HOMES, INC.
JORDAN

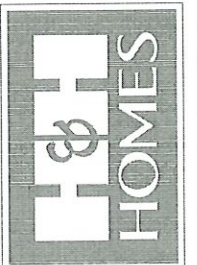
DATE: MARCH 15, 2019
REV: MAY 01, 2020
SCALE: 1/4"=1'-0"
DRAWN BY:
ENGINEERED BY:
REVIEWED BY:

FIRST FLOOR
OPTIONS w/ AND
w/o BASEMENT

A-6.2



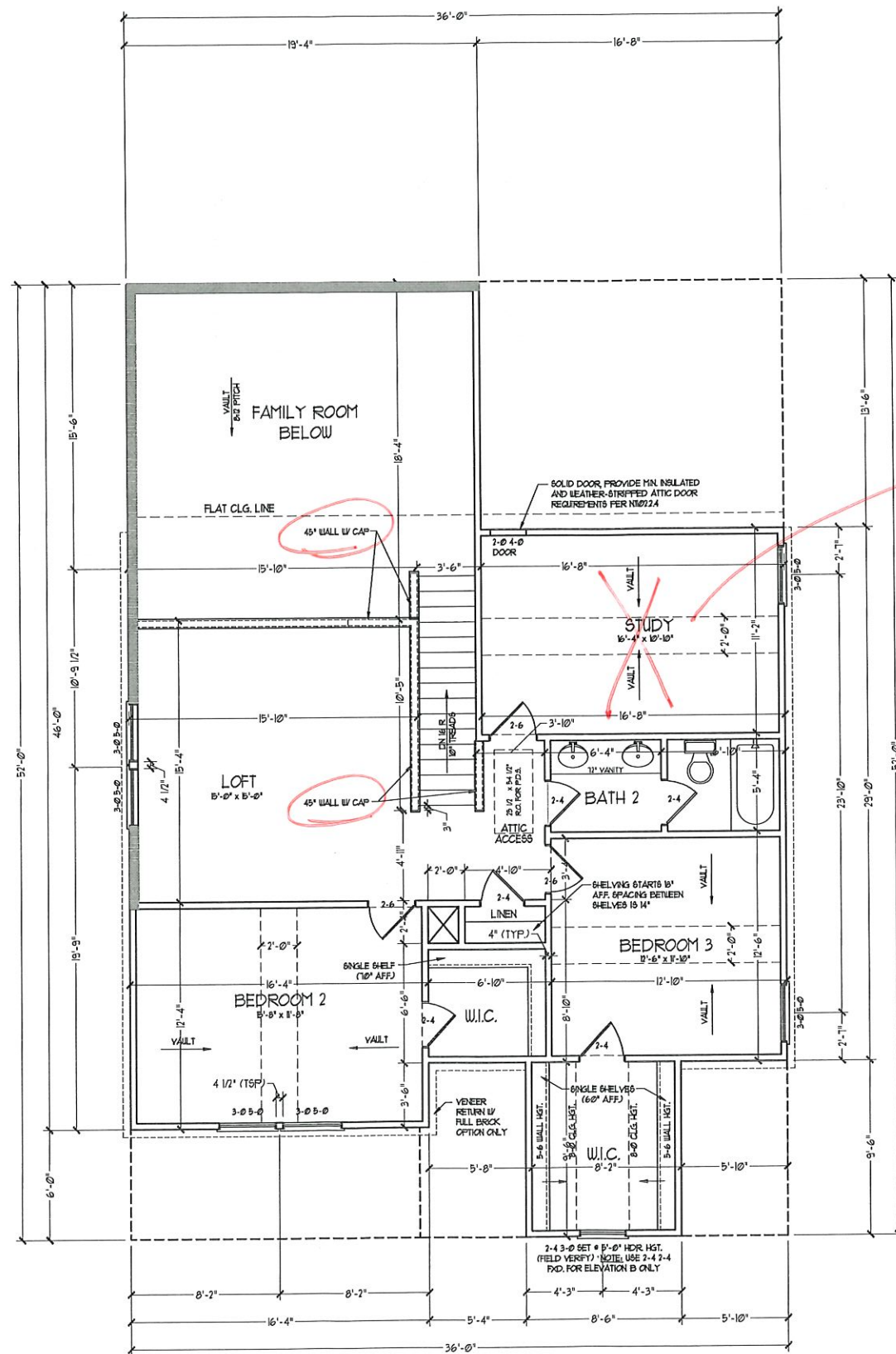
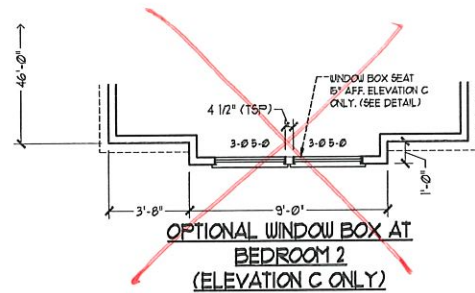
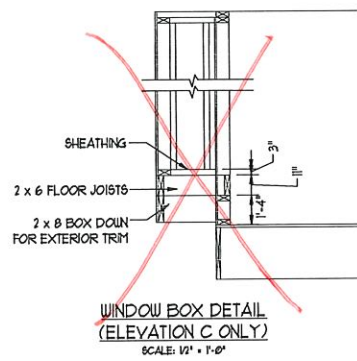
J.S. THOMPSON
ENGINEERING, INC.
600 WADE AVE., SUITE 104
RALEIGH, NC 27605
PHONE: (919) 788-9119
FAX: (919) 788-9221
N.C. LICENSE NO.: C1133



PRICES, PROMOTIONS, INCENTIVES, FEATURES, FINANCING OFFERS, AND DIMENSIONS ARE SUBJECT TO CHANGE WITHOUT NOTICE. SQUARE FOOTAGE AND DIMENSIONS ARE ESTIMATED AND MAY VARY IN ACTUAL CONSTRUCTION. ACTUAL POSITION OF HOUSE ON LOT WILL BE DETERMINED BY SURVEYING. THESE PLANS ARE THE PROPERTY OF H&H HOMES, INC. ANY REPRODUCTION, ADAPTATION, OR DISPLAY OF THESE PLANS IS STRICTLY PROHIBITED. SEE NEW HOME SALES CONSULTANTS FOR CURRENT DETAILS. © 2019 H&H HOMES

H&H HOMES, INC.
JORDAN

DATE: MARCH 15, 2019
REV.: MAY 01, 2020
SCALE: 1/4" = 1'-0"
DRAWN BY:
ENGINEERED BY:
REVIEWED BY:
FIRST FLOOR
PARTIAL PLANS
W/ & W/O
BASEMENT
A-6.3



see BR#4

NOTE: ALL EXTERIOR WALLS AND ATTIC WALLS ARE TO BE 2 x 4 @ 16" O.C. (NO)2. ALL INTERIOR LOAD BEARING WALLS ARE TO BE 2 x 4 @ 16" O.C. (NO) AND NON-LOAD BEARING INTERIOR WALLS ARE TO BE 2 x 4 @ 24" O.C. (NO)2.

2x6 WALL

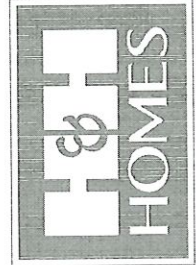
- SHADED WALLS ARE TO BE 2 x 6 @ 16" O.C. (LOAD BEARING) OR 2 x 6 @ 24" O.C. (NON-LOAD BEARING) REGARDLESS OF EXTERIOR WALL CONDITION

• PROVIDE MINIMUM INSULATION IN CEILINGS AND WALLS PER SECTION N 1102.1

SEE PARTIAL FLOOR PLANS ON SHEET A-62 FOR CHANGES TO THE EXTERIOR VENEER FOR ALL ELEVATIONS.

SECOND FLOOR PLAN
(A-1, B-1, AND C-1)

J.S. THOMPSON ENGINEERING, INC.
605 WADE AVE., SUITE 104
RALEIGH, NC 27605
PHONE: (919) 789-9519
FAX: (919) 789-9921
N.C. LICENSE NO.: C1753



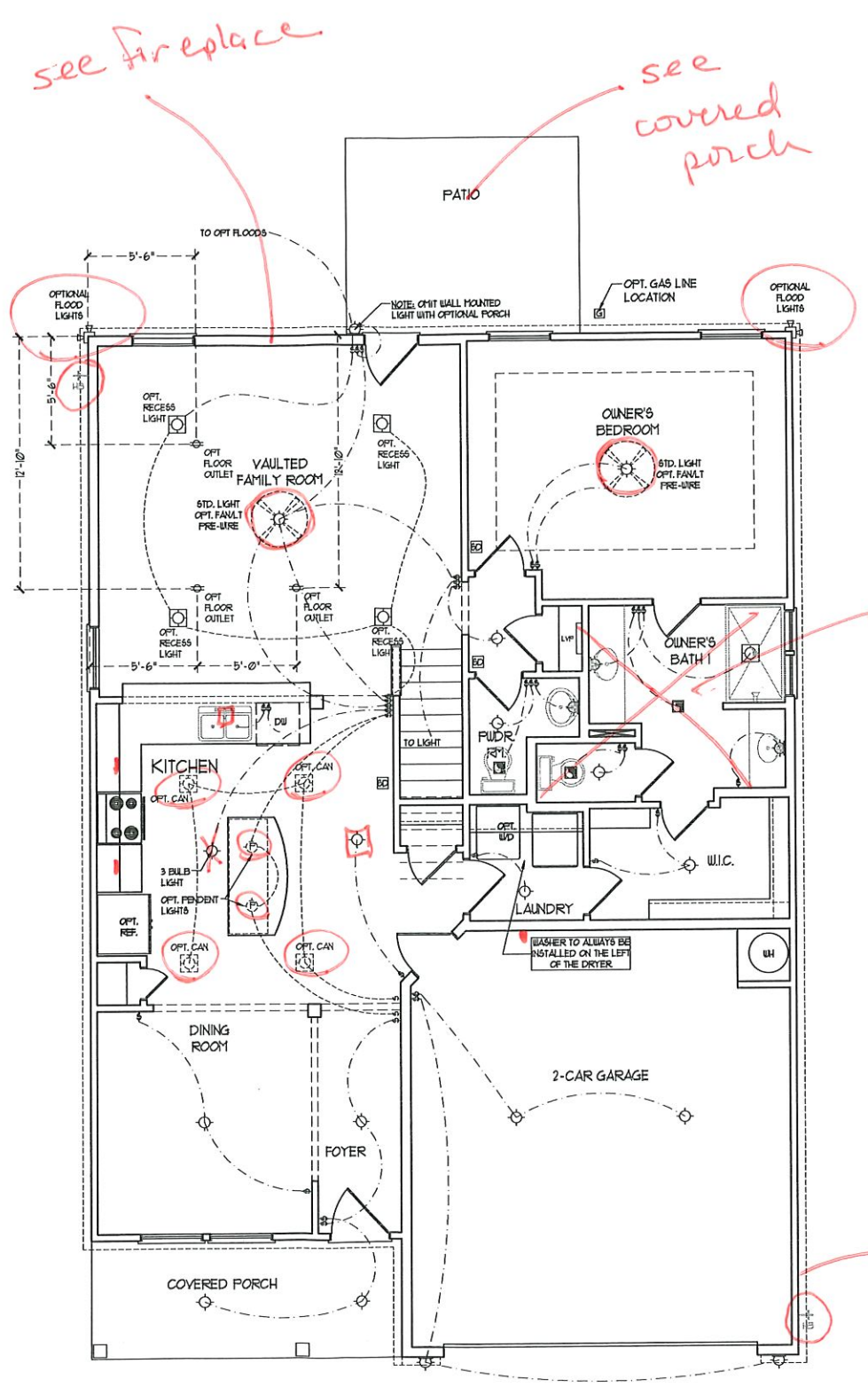
PRICE, PROMOTIONS, INCENTIVES, FEATURES, OPTIONS, FLOOR PLANS, ELEVATIONS, DESIGNS, MATERIALS AND DIMENSIONS ARE SUBJECT TO CHANGE WITHOUT NOTICE. SQUARE FOOTAGE AND DIMENSIONS ARE ESTIMATED AND MAY VARY FROM THE ACTUAL. CONSULT WITH ARCHITECT FOR ALL DIMENSIONS. LOT WILL BE DETERMINED BY THE SITE PLAN AND PLOT PLAN. FLOOR PLANS AND ELEVATION RENDERINGS ARE ARTIST CONCEPTIONS OF FISH HOMES. ANY USE, REPRODUCTION, PROPERTY OF FISH HOMES. ANY USE, REPRODUCTION, OR DISTRIBUTION OF THIS DOCUMENT IS PROHIBITED. SEE NEW HOME SALES CONSULTANT FOR CURRENT DETAILS. COPYRIGHT © 2019 FISH HOMES

H&H HOMES, INC.
JORDAN

DATE: MARCH 15, 2019
REV.: MAY 01, 2020
SCALE: 1/4" = 1'-0"
DRAWN BY:
ENGINEERED BY:
REVIEWED BY:

SECOND FLOOR PLAN

A-7



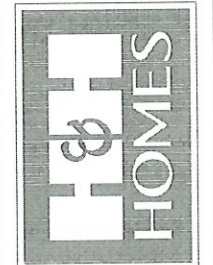
ELECTRICAL LAYOUT NOTES:

- 1) BLOCK AND WIRE FOR ALL CEILING FANS PER PLAN
- 2) VANTY LIGHTS TO BE SET # 30" AFF. (TYP)
- 3) ADDITIONAL EXTERIOR OUTLETS REQUIRED BY CODE TO BE LOCATED BY ELECTRICIAN
- 4) PLACE SWITCHES 6" FROM ROUGH OPENINGS.

ELECTRICAL LEGEND

	120 V OUTLET
	WALL MOUNT LIGHT
	CEILING MOUNT LIGHT
	PENDANT LIGHT
	RECESSED CAN LIGHT
	MINI CAN LIGHT
	EYEBALL LIGHT
	FLUORESCENT LIGHT
	2 LAMP, 4' FLUORESCENT LIGHT
	FLOOD LIGHT
	SWITCH
	3-WAY SWITCH
	4-WAY SWITCH
	DIMMER SWITCH
	CONDUIT FOR COMPONENT WIRING
	SPEAKER
	DOORBELL CHIME
	120 V SMOKE DETECTOR
	CO DETECTOR
	EXHAUST FAN
	LOW VOLTAGE PANEL
	CEILING FAN
	CEILING FAN w/ LIGHT

J.S. THOMPSON ENGINEERING, INC.
 605 WADE AVE., SUITE 104
 RALEIGH, NC 27605
 PHONE: (919) 788-9919
 FAX: (919) 788-9921
 N.C. LICENSE NO.: C4133



PRICES, PROMOTIONS, INCENTIVES, FEATURES, MATERIALS AND DIMENSIONS ARE SUBJECT TO CHANGE WITHOUT NOTICE. SQUARE FOOTAGE AND DIMENSIONS ARE ESTIMATED AND MAY VARY IN ACTUAL CONSTRUCTION. ACTUAL POSITION OF HOUSE ON LOT, FLOOR PLANS AND ELEVATION RENDERINGS ARE ARTIST CONCEPTIONS. FLOOR PLANS ARE THE COPYRIGHTED PROPERTY OF H&H HOMES. ANY USE, REPRODUCTION, ADAPTATION, OR DISPLAY OF THE PLANS IS STRICTLY PROHIBITED. © 2018 H&H HOMES

H&H HOMES, INC.
 JORDAN

DATE: MARCH 15, 2019
 REV.: MAY 01, 2020
 SCALE: 1/4" = 1'-0"
 DRAWN BY:
 ENGINEERED BY:
 REVIEWED BY:

FIRST FLOOR ELECTRICAL PLAN

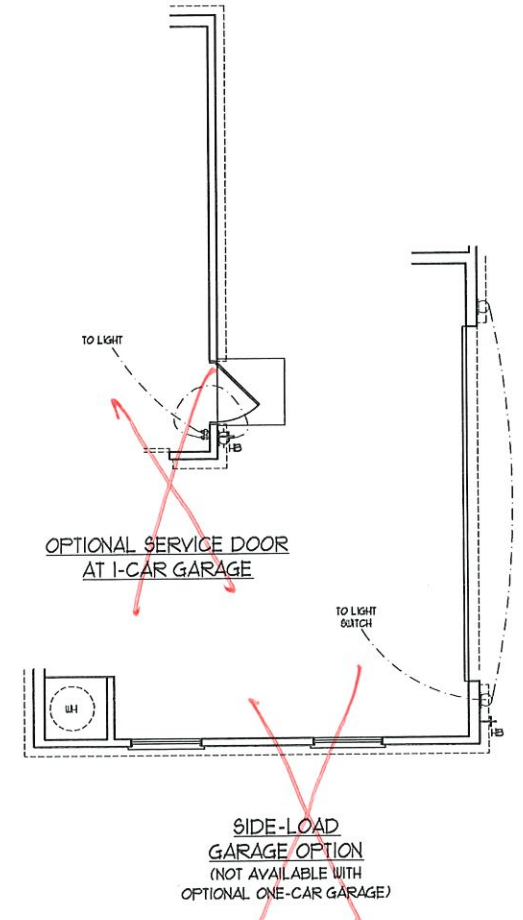
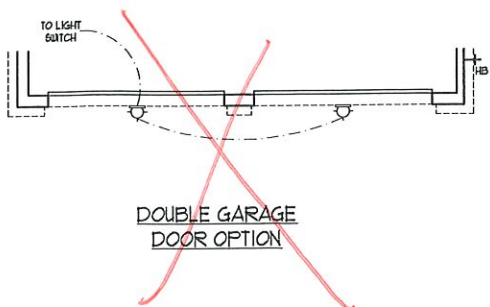
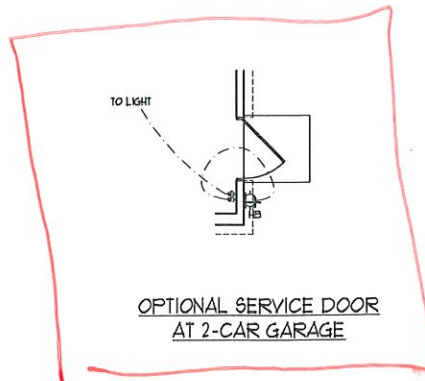
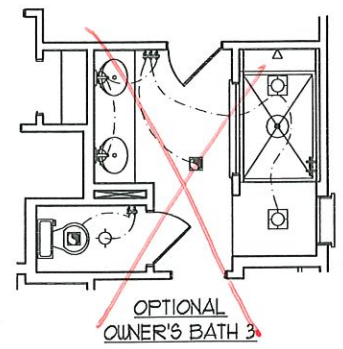
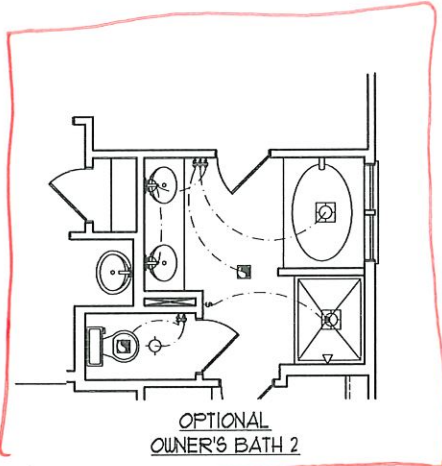
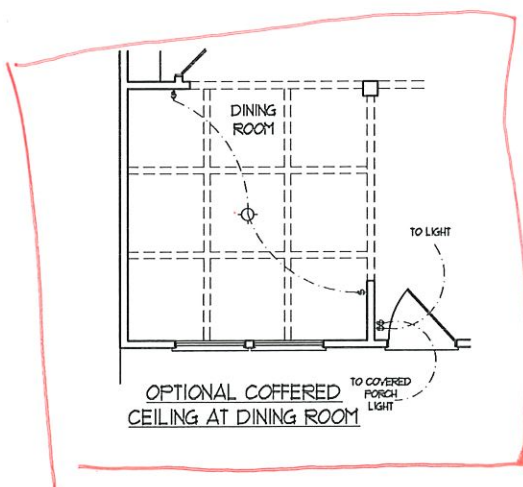
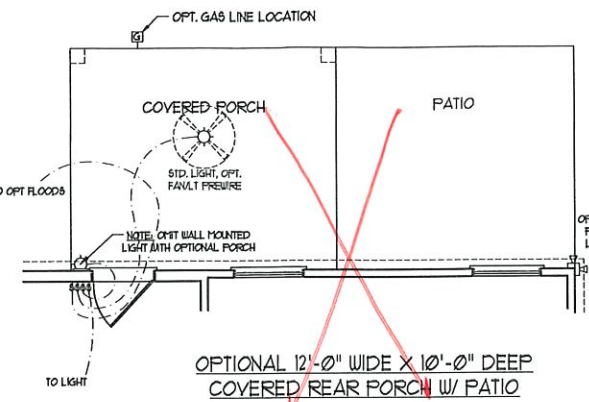
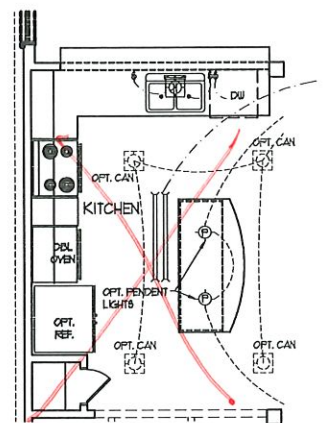
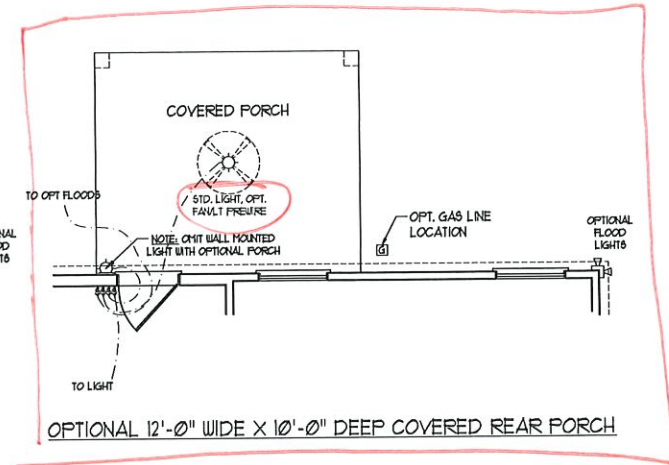
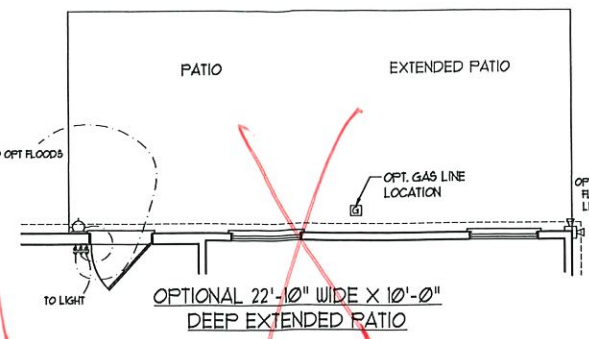
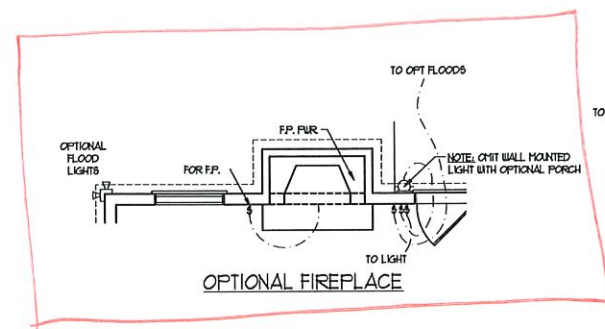


ELECTRICAL LAYOUT NOTES:

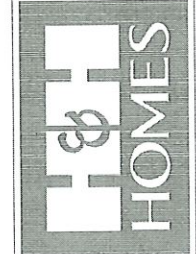
- 1) BLOCK AND WIRE FOR ALL CEILING FANS PER PLAN
- 2) VANITY LIGHTS TO BE SET @ 90" AFF. (TYP.)
- 3) ADDITIONAL EXTERIOR OUTLETS REQUIRED BY CODE TO BE LOCATED BY ELECTRICIAN
- 4) PLACE SWITCHES 8" MIN FROM ROUGH OPENINGS.

ELECTRICAL LEGEND

	10 V OUTLET
	WALL MOUNT LIGHT
	CEILING MOUNT LIGHT
	PENDANT LIGHT
	RECESSED CAN LIGHT
	HNI CAN LIGHT
	EYEBALL LIGHT
	FLUORESCENT LIGHT
	2 LAMP, 4' FLUORESCENT LIGHT
	FLOOD LIGHT
	SWITCH
	3-WAY SWITCH
	4-WAY SWITCH
	DIMMER SWITCH
	CONDUIT FOR COMPONENT WIRING
	BREAKER
	DOORBELL CHIME
	10 V SMOKE DETECTOR
	CO DETECTOR
	EXHAUST FAN
	LOU VOLTAGE PANEL
	CEILING FAN
	CEILING FAN W/ LIGHT



J.S. THOMPSON ENGINEERING, INC.
 600 W. WEAVER, SUITE 104
 RALEIGH, NC 27605
 PHONE: (919) 788-9919
 FAX: (919) 788-9921
 N.C. LICENSE NO.: C-1733

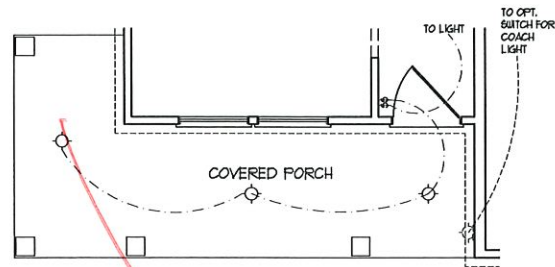


PRICES, PROMOTIONS, INCENTIVES, FEATURES, OPTIONS, FLOOR PLANS, ELEVATIONS, DESIGNS, MATERIALS AND DIMENSIONS ARE SUBJECT TO CHANGE WITHOUT NOTICE. SQUARE FOOTAGE AND DIMENSIONS ARE ESTIMATED AND MAY VARY IN ACTUAL CONSTRUCTION. ALL DIMENSIONS ARE TO FACE UNLESS OTHERWISE NOTED. FLOOR PLANS AND ELEVATION RENDERINGS ARE ARTIST CONCEPTIONS. FLOOR PLANS ARE THE COPYRIGHTED PROPERTY OF H&H HOMES, INC. USE, REPRODUCTION, ADAPTATION, OR MODIFICATION OF ANY PART OF THIS DOCUMENT WITHOUT THE WRITTEN PERMISSION OF H&H HOMES, INC. IS STRICTLY PROHIBITED. © 2019 H&H HOMES. CURRENT DETAILS. COPYRIGHT © 2019 H&H HOMES.

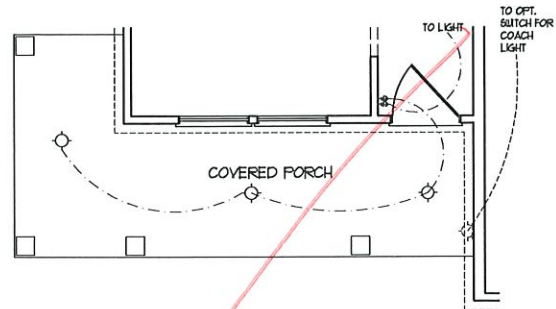
H&H HOMES, INC.
JORDAN

DATE: MARCH 15, 2019
 REV.: MAY 01, 2020
 SCALE: 1/4"=1'-0"
 DRAWN BY:
 ENGINEERED BY:
 REVIEWED BY:

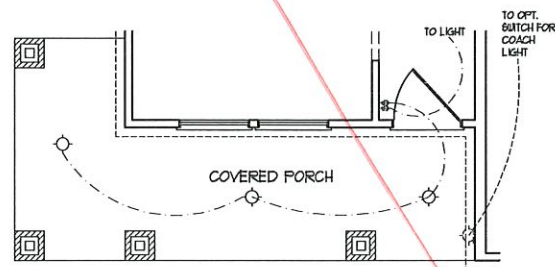
FIRST FLOOR ELECTRICAL OPTIONS



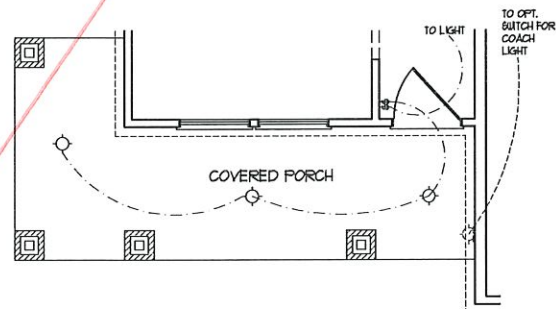
OPTIONAL WRAP AROUND PORCH
(ELEV. C-1, C-2, C-3, & C-4)



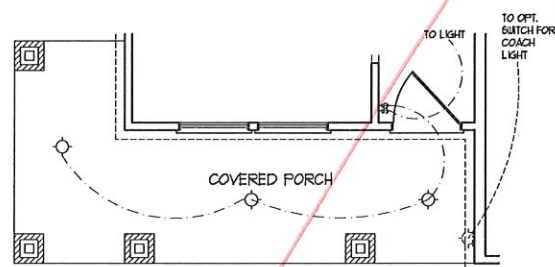
OPTIONAL WRAP AROUND PORCH
W/ OPTIONAL BASEMENT
(ELEV. C-1, C-2, C-3, & C-4)



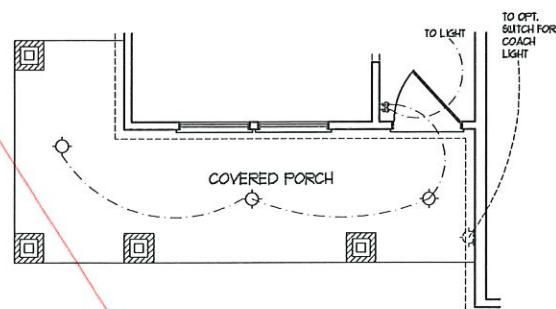
OPTIONAL WRAP AROUND PORCH
(ELEV. B-4)



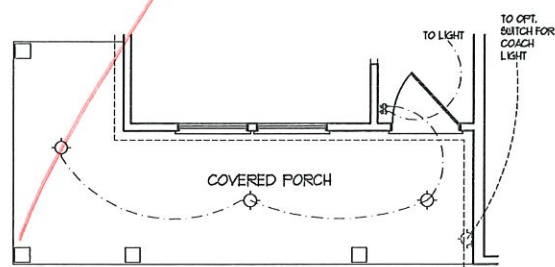
OPTIONAL WRAP AROUND PORCH
W/ OPTIONAL BASEMENT
(ELEV. B-4)



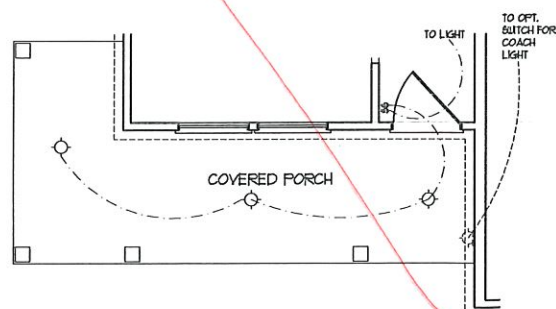
OPTIONAL WRAP AROUND PORCH
(ELEV. B-1, B-2, & B-3)



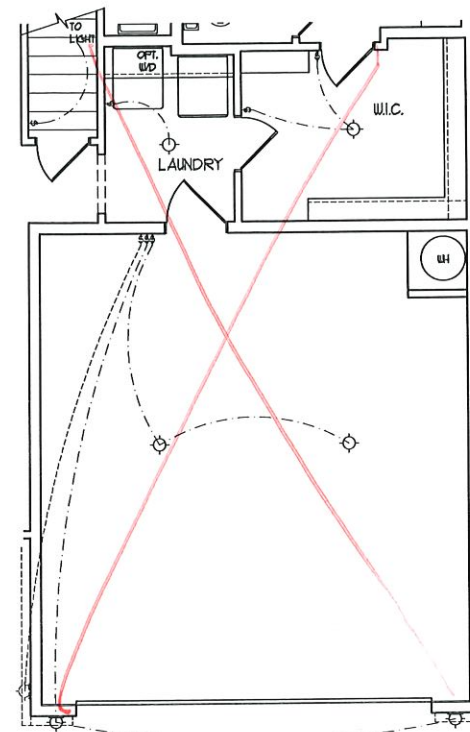
OPTIONAL WRAP AROUND PORCH
W/ OPTIONAL BASEMENT
(ELEV. B-1, B-2, & B-3)



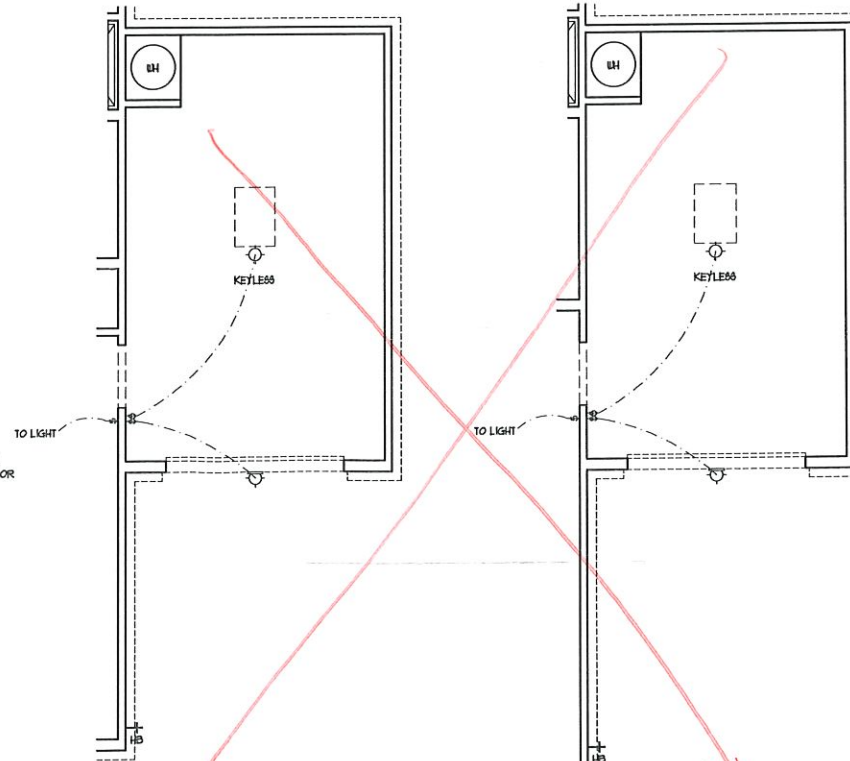
OPTIONAL WRAP AROUND PORCH
(ELEV. A-1, A-2, A-3, & A-4)



OPTIONAL WRAP AROUND PORCH
W/ OPTIONAL BASEMENT
(ELEV. A-1, A-2, A-3, & A-4)



2-CAR GARAGE W/
OPTIONAL BASEMENT
(A-1, B-1, AND C-1)

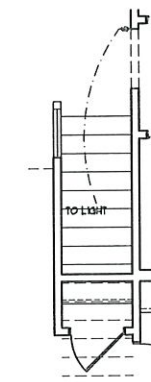


1-CAR GARAGE OPTION

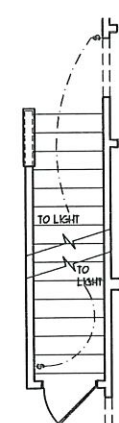
1-CAR GARAGE OPTION

ELECTRICAL LAYOUT NOTES:
 1) BLOCK AND WIRE FOR ALL CEILING FANS PER PLAN
 2) VANITY LIGHTS TO BE SET # 30" AFF. (TYP)
 3) ADDITIONAL EXTERIOR OUTLETS REQUIRED BY CODE TO BE LOCATED BY ELECTRICIAN
 4) PLACE SWITCHES 6" (MIN) FROM ROUGH OPENINGS

ELECTRICAL LEGEND	
	10 V OUTLET
	WALL MOUNT LIGHT
	CEILING MOUNT LIGHT
	PENDANT LIGHT
	RECESSED CAN LIGHT
	MINI CAN LIGHT
	EYEBALL LIGHT
	FLUORESCENT LIGHT
	2 LAMP, 4' FLUORESCENT LIGHT
	FLOOD LIGHT
	SWITCH
	3-WAY SWITCH
	4-WAY SWITCH
	DIMMER SWITCH
	CONDUIT FOR COMPONENT WIRING
	GFI/AFER
	DOORBELL CHIME
	10 V SMOKE DETECTOR
	CO DETECTOR
	EXHAUST FAN
	LOW VOLTAGE PANEL
	CEILING FAN
	CEILING FAN W/ LIGHT

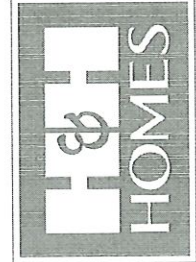


OPT. OPEN RAIL ILO
45" HALF WALL WITH CAP



OPT. BASEMENT STAIRS

J.S. THOMPSON ENGINEERING, INC.
 600 W. WEAVER AVE., SUITE 104
 RALEIGH, NC 27605
 PHONE: (919) 788-9919
 FAX: (919) 788-9921
 N.C. LICENSE NO.: C-1333

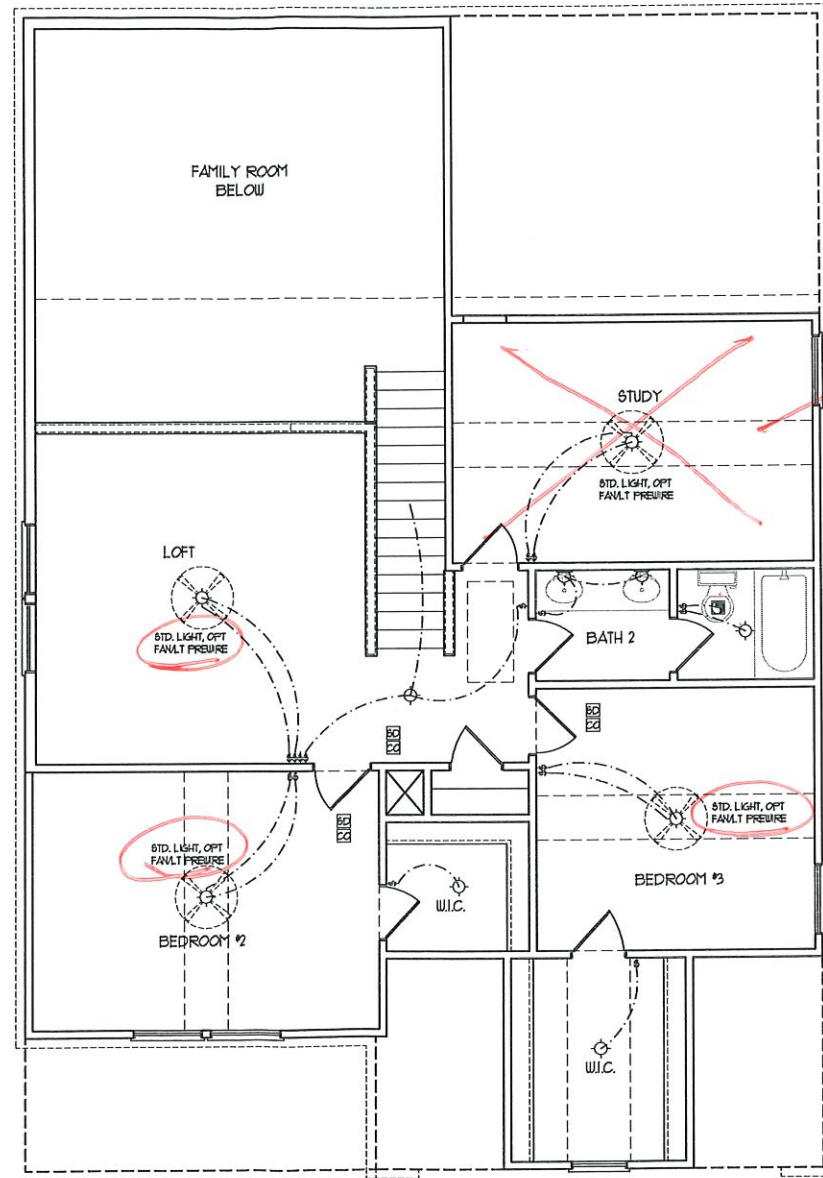
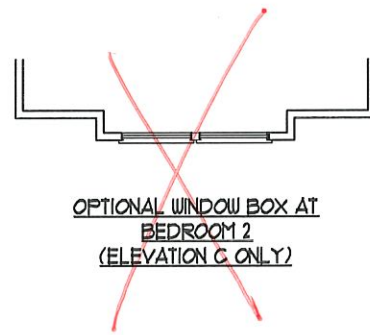


PLEASE PROMPTLY NOTIFY ARCHITECT OF ANY CHANGES TO THIS PLAN. ALL DIMENSIONS ARE TO FACE UNLESS OTHERWISE NOTED. MATERIALS AND DIMENSIONS ARE SUBJECT TO CHANGE WITHOUT NOTICE. SQUARE FOOTAGE AND DIMENSIONS ARE ESTIMATED AND MAY VARY IN ACTUAL CONSTRUCTION. ALL CONCEPTS, FLOOR PLANS AND ELEVATION RENDERINGS ARE ARTIST CONCEPTIONS. FLOOR PLANS ARE THE COPYRIGHTED PROPERTY OF H&H HOMES, INC. ANY REPRODUCTION, DISTRIBUTION OR USE OF THIS PLAN WITHOUT THE WRITTEN PERMISSION OF H&H HOMES IS PROHIBITED. SEE NEW HOME SALES CONSULTANT FOR CURRENT DETAILS. COPYRIGHT © 2019 H&H HOMES

H&H HOMES, INC.
 JORDAN

DATE: MARCH 15, 2019
 REV.: MAY 01, 2020
 SCALE: 1/4"=1'-0"
 DRAWN BY:
 ENGINEERED BY:
 REVIEWED BY:

FIRST FLOOR
 ELECTRICAL
 OPTIONS



see BR #4

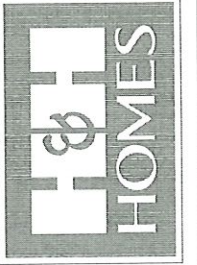
- ELECTRICAL LAYOUT NOTES:**
- 1) BLOCK AND WIRE FOR ALL CEILING FANS PER PLAN
 - 2) VANITY LIGHTS TO BE SET # 36" AFF. (TYP)
 - 3) ADDITIONAL EXTERIOR OUTLETS REQUIRED BY CODE TO BE LOCATED BY ELECTRICIAN
 - 4) PLACE SWITCHES 8" MIN FROM ROUGH OPENINGS.

ELECTRICAL LEGEND

	1Ø V OUTLET
	WALL MOUNT LIGHT
	CEILING MOUNT LIGHT
	PENDANT LIGHT
	RECESSED CAN LIGHT
	MINI CAN LIGHT
	EYEBALL LIGHT
	FLUORESCENT LIGHT
	2 LAMP, 4' FLUORESCENT LIGHT
	FLOOD LIGHT
	SWITCH
	3-WAY SWITCH
	4-WAY SWITCH
	DIMMER SWITCH
	CONDUIT FOR COFFERED WIRING
	SPEAKER
	DOORBELL CHIME
	1Ø V SMOKE DETECTOR
	CO DETECTOR
	EXHAUST FAN
	LOW VOLTAGE PANEL
	CEILING FAN
	CEILING FAN W/ LIGHT

SECOND FLOOR PLAN
(A-1, B-1, AND C-1)

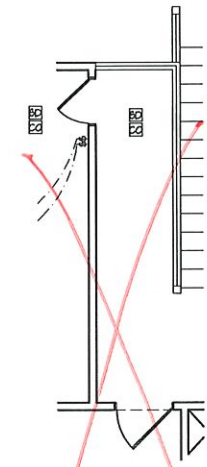
J.S. THOMPSON ENGINEERING, INC.
630 WADE AVE., SUITE 104
RALEIGH, NC 27605
PHONE: (919) 789-9919
FAX: (919) 789-9931
N.C. LICENSE NO. C1733



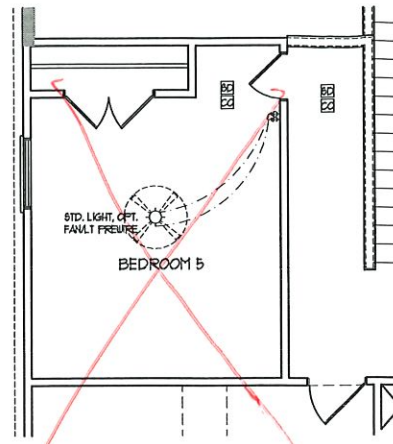
PERIODS, PROVISIONS, VENTURES, FEATURES, OPTIONS, ETC. FOR THIS PLAN. ELEVATIONS, MATERIALS AND DIMENSIONS ARE SUBJECT TO CHANGE WITHOUT NOTICE. SQUARE FOOTAGE AND DIMENSIONS ARE ESTIMATED AND MAY VARY IN ACTUAL CONSTRUCTION. ACTUAL POSITION OF WALLS, DOOR, FLOOR PLANS AND ELEVATION RENDERINGS ARE ARTIST CONCEPTIONS. FLOOR PLANS ARE THE COPYRIGHTED PROPERTY OF H&H HOMES. ANY USE, REPRODUCTION, ADAPTATION, OR DISPLAY OF THE PLANS IS STRICTLY PROHIBITED. H&H HOMES, INC. 2019 H&H HOMES. CURRENT DETAILS. COPYRIGHT © 2019 H&H HOMES.

H&H HOMES, INC.
JORDAN

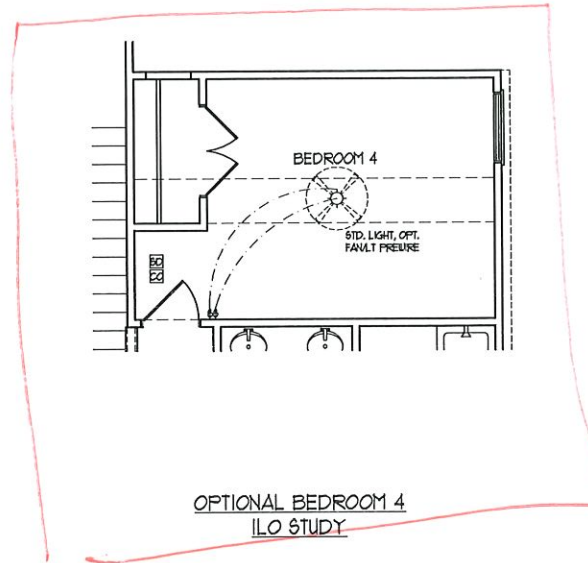
DATE: MARCH 15, 2019
REV.: MAY 01, 2020
SCALE: 1/4" = 1'-0"
DRAWN BY:
ENGINEERED BY:
REVIEWED BY:
SECOND FLOOR ELECTRICAL PLAN
E-2



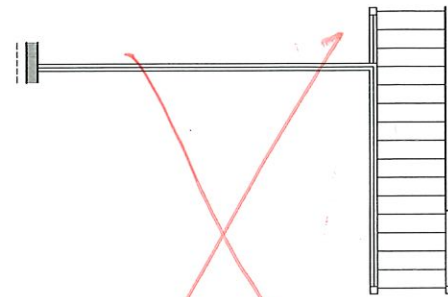
OPTIONAL OPEN RAIL ILO
45" WALL W/ CAP W/
BEDROOM 5 ILO LOFT



OPTIONAL BEDROOM 5
ILO LOFT



OPTIONAL BEDROOM 4
ILO STUDY



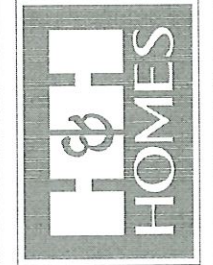
OPEN RAIL ILO 45" WALL
W/ CAP

- ELECTRICAL LAYOUT NOTES:**
- 1) BLOCK AND WIRE FOR ALL CEILING FANS PER PLAN.
 - 2) VANTY LIGHTS TO BE SET # 30" AFF. (TYP.)
 - 3) ADDITIONAL EXTERIOR OUTLETS REQUIRED BY CODE TO BE LOCATED BY ELECTRICIAN.
 - 4) PLACE SWITCHES 6" MIN FROM ROUGH OPENINGS.

ELECTRICAL LEGEND

	120 V OUTLET
	WALL MOUNT LIGHT
	CEILING MOUNT LIGHT
	PENDANT LIGHT
	RECESSED CAN LIGHT
	MINI CAN LIGHT
	EYEBALL LIGHT
	FLUORESCENT LIGHT
	2 LAMP, 4' FLUORESCENT LIGHT
	FLOOD LIGHT
	SWITCH
	3-WAY SWITCH
	4-WAY SWITCH
	DIMMER SWITCH
	CONDUIT FOR COMPONENT WIRES
	SPEAKER
	DOORBELL CHIME
	NO V SMOKE DETECTOR
	CO DETECTOR
	EXHAUST FAN
	LOW VOLTAGE PANEL
	CEILING FAN
	CEILING FAN W/ LIGHT

J.S. THOMPSON ENGINEERING, INC.
630 WALKER AVE., SUITE 104
RALEIGH, NC 27605
PHONE: 919 789-9919
FAX: 919 789-9921
N.C. LICENSE NO. G-1133



PRICES, PROMOTIONS, INCENTIVES, FEATURES, MATERIALS AND DIMENSIONS ARE SUBJECT TO CHANGE WITHOUT NOTICE. SQUARE FOOTAGE AND DIMENSIONS ARE ESTIMATED AND MAY VARY IN ACTUAL CONSTRUCTION. ACTUAL POSITION OF HOLES ON LOT, WALLS, CEILING AND ELEVATION REVISIONS ARE LATEST. FLOOR PLANS AND ELEVATION REVISIONS ARE LATEST. CONCEPTS, FLOOR PLANS ARE THE COPYRIGHTED PROPERTY OF H&H HOMES. ANY USE, REPRODUCTION, ADAPTATION OR DISPLAY OF THE PLANS IS STRICTLY PROHIBITED. SEE NEW HOME SALES OFFICE FOR CURRENT DETAILS. COPYRIGHT © 2019 H&H HOMES

H&H HOMES, INC.
JORDAN

DATE: MARCH 15, 2019
REV.: MAY 01, 2020
SCALE: 1/4"=1'-0"
DRAWN BY:
ENGINEERED BY:
REVIEWED BY:
SECOND FLOOR ELECTRICAL OPTIONS
E-2.1