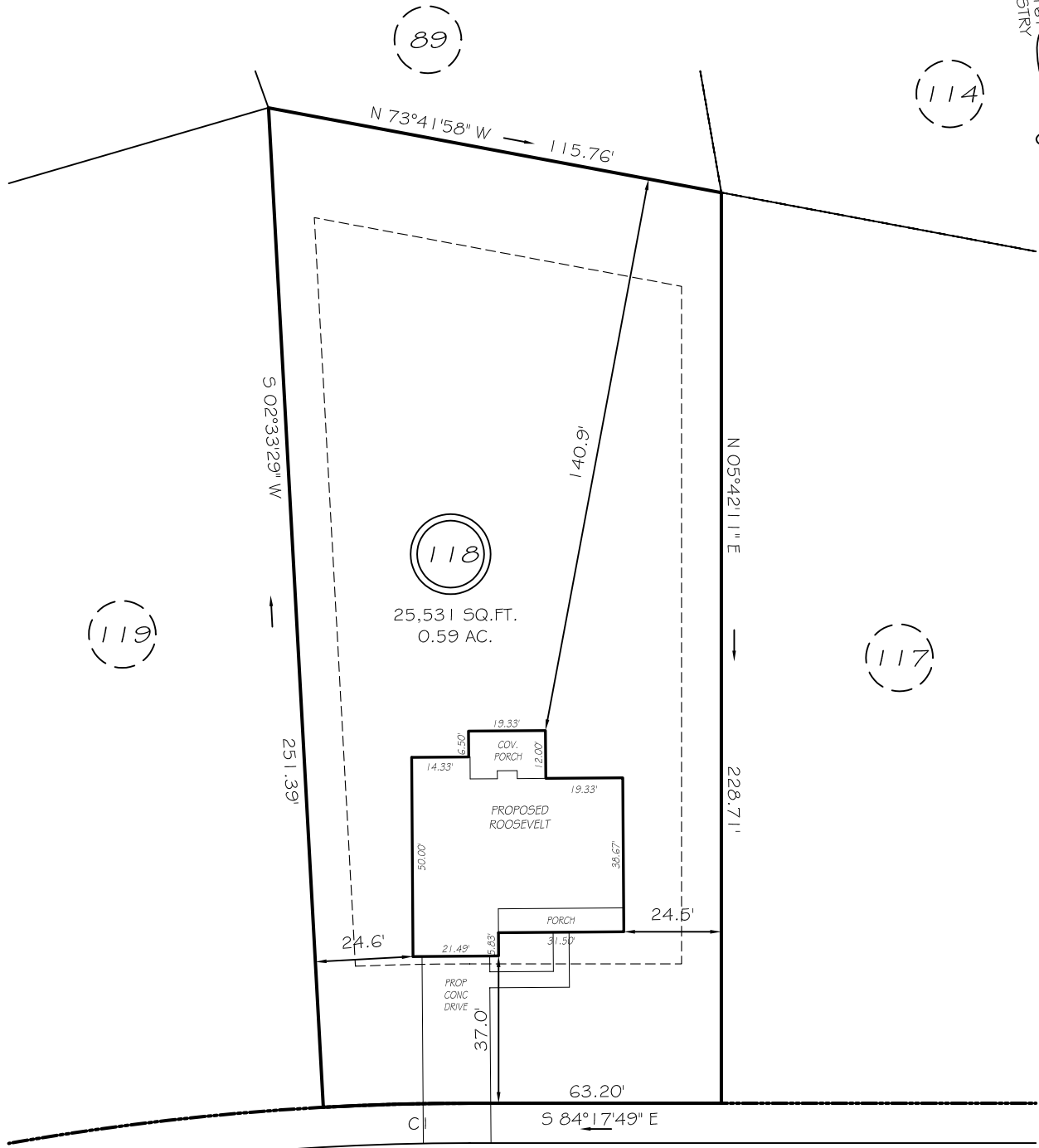


I, MICHAEL P. GRIFFIN, certify that under my direction and supervision this map was drawn from an actual field survey; that the error of closure of the survey as calculated by coordinates is 1: 10,000+; that the area shown hereon was calculated by coordinates.

Witness my hand and seal this day of MONTH 2021.

BK 2021 PG 159-161  
HARNETT CO. REGISTRY



**BUNTING DRIVE**  
50' RW (PRIVATE  
& UTILITY ACCESS)

**SETBACKS**

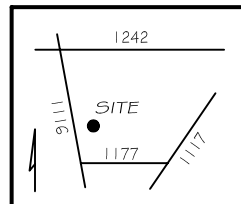
FRONT	35'
REAR	25'
SIDE	10'
CORNER	20'

CI R=670.73' L=36.82' S85°52'10"E 36.81'

**PRELIMINARY**  
NOT FOR RECORDATION,  
SALES OR CONVEYANCE

**LEGEND**

EIP	EXISTING IRON PIPE	FES	FLARED END SECTION
IPS	IRON PIPE SET	WM	WATER METER
R/W	RIGHT OF WAY	CO	CLEAN OUT
N/F	NOW OR FORMERLY	FH	FIRE HYDRANT
EIS	EXISTING IRON STAKE	CB	CATCH BASIN



**GRIFFIN LAND SURVEYING, INC.**

P. O. BOX 148  
FUQUAY-VARINA, NC 27526  
(919) - 567 - 1963

**PLOT PLAN**  
FOR  
**H & H HOMES**

**OAKMONT**  
**LOT 118**  
BUNTING DRIVE  
NORTH CAROLINA  
HARNETT COUNTY BARBECUE TOWNSHIP

DRAWN BY NMF

DATE 4/23/21

CHECKED BY MPG

SCALE 1" = 40'