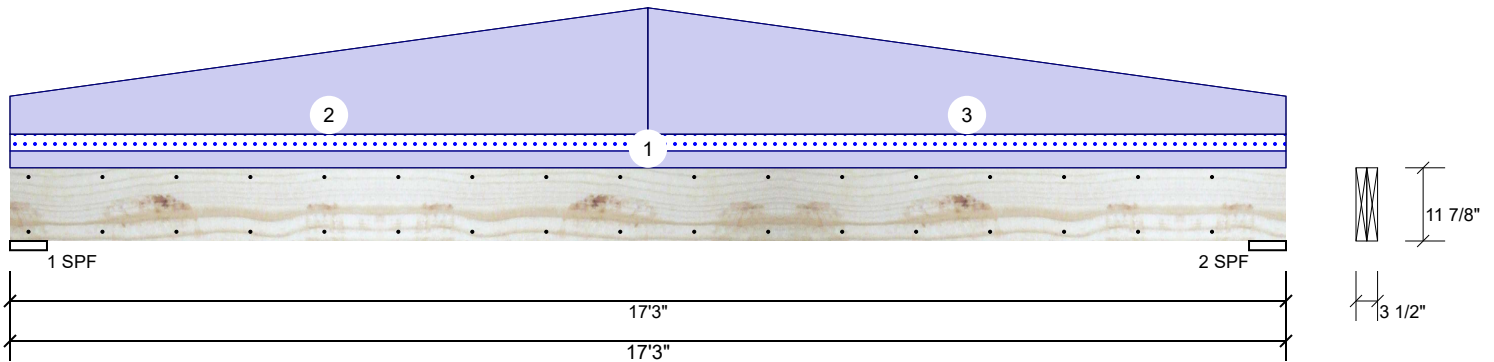


**GDH1 Kerto-S LVL 1.750" X 11.875" 2-Ply - PASSED**

Level: Level



**Member Information**

Type:	Girder	Application:	Floor
Plies:	2	Design Method:	ASD
Moisture Condition:	Dry	Building Code:	IBC/IRC 2015
Deflection LL:	480	Load Sharing:	No
Deflection TL:	360	Deck:	Not Checked
Importance:	Normal		
Temperature:	Temp <= 100°F		

**Reactions UNPATTERNED lb (Uplift)**

Brg	Live	Dead	Snow	Wind	Const
1	0	1093	173	0	0
2	0	1093	173	0	0

**Bearings**

Bearing	Length	Cap. React	D/L lb	Total	Ld. Case	Ld. Comb.
1 - SPF	6.000"	14%	1093 / 173	1266	L	D+S
2 - SPF	6.000"	14%	1093 / 173	1266	L	D+S

**Analysis Results**

Analysis	Actual	Location	Allowed	Capacity	Comb.	Case
Moment	4894 ft-lb	8'7 1/2"	17919 ft-lb	0.273 (27%)	D	Uniform
Unbraced	5564 ft-lb	8'7 1/2"	6086 ft-lb	0.914 (91%)	D+S	L
Shear	975 lb	15'9 7/8"	7980 lb	0.122 (12%)	D	Uniform
LL Defl inch	0.035 (L/5617)	8'7 9/16"	0.409 (L/480)	0.090 (9%)	S	L
TL Defl inch	0.286 (L/687)	8'7 9/16"	0.546 (L/360)	0.520 (52%)	D+S	L

**Design Notes**

- 1 Fasten all plies using 2 rows of 10d Box nails (.128x3") at 12" o.c. Maximum end distance not to exceed 6".
- 2 Refer to last page of calculations for fasteners required for specified loads.
- 3 Girders are designed to be supported on the bottom edge only.
- 4 Top loads must be supported equally by all plies.
- 5 Top braced at bearings.
- 6 Bottom braced at bearings.
- 7 Lateral slenderness ratio based on single ply width.

ID	Load Type	Location	Trib Width	Side	Dead 0.9	Live 1	Snow 1.15	Wind 1.6	Const. 1.25	Comments
1	Uniform			Top	20 PLF	0 PLF	20 PLF	0 PLF	0 PLF	roof
2	Tapered Start	0-0-0		Top	45 PLF	0 PLF	0 PLF	0 PLF	0 PLF	wall
	End	8-7-8			150 PLF	0 PLF	0 PLF	0 PLF	0 PLF	
3	Tapered Start	8-7-8		Top	150 PLF	0 PLF	0 PLF	0 PLF	0 PLF	wall
	End	17-3-0			45 PLF	0 PLF	0 PLF	0 PLF	0 PLF	
	Self Weight				9 PLF					

**Notes**

Calculated Structured Designs is responsible only of the structural adequacy of this component based on the design criteria and loadings shown. It is the responsibility of the customer and/or the contractor to ensure the component suitability of the intended application, and to verify the dimensions and loads.

**Lumber**

1. Dry service conditions, unless noted otherwise
2. LVL not to be treated with fire retardant or corrosive

chemicals

**Handling & Installation**

1. LVL beams must not be cut or drilled
2. Refer to manufacturer's product information regarding installation requirements, multi-ply fastening details, beam strength values, and code approvals
3. Damaged Beams must not be used
4. Design assumes top edge is laterally restrained
5. Provide lateral support at bearing points to avoid lateral displacement and rotation

6. For flat roofs provide proper drainage to prevent ponding

**Manufacturer Info**

Metsä Wood  
 301 Merritt 7 Building, 2nd Floor  
 Norwalk, CT 06851  
 (800) 622-5850  
 www.metsawood.com/us  
 ICC-ES: ESR-3633

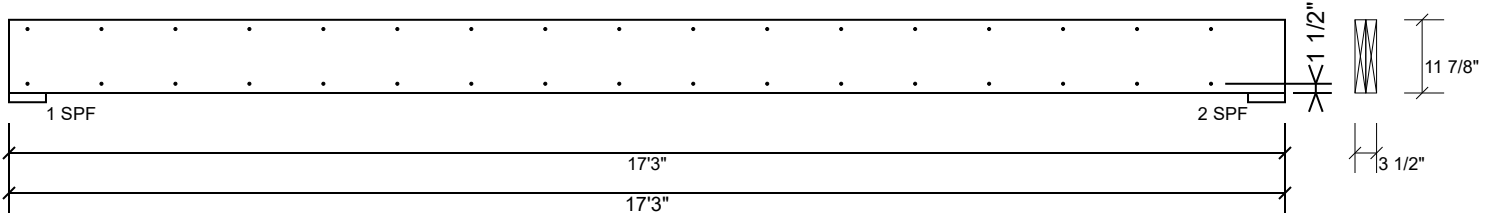
Comtech, Inc.  
 1001 S. Reilly Road, Suite #639  
 Fayetteville, NC  
 USA  
 28314  
 910-864-TRUS



This design is valid until 11/13/2022

**GDH1 Kerto-S LVL 1.750" X 11.875" 2-Ply - PASSED**

Level: Level



**Multi-Ply Analysis**

Fasten all plies using 2 rows of 10d Box nails (.128x3") at 12" o.c.. Maximum end distance not to exceed 6"

Capacity	0.0 %
Load	0.0 PLF
Yield Limit per Foot	163.7 PLF
Yield Limit per Fastener	81.9 lb.
Yield Mode	IV
Edge Distance	1 1/2"
Min. End Distance	3"
Load Combination	
Duration Factor	1.00

**Notes**

Calculated Structured Designs is responsible only of the structural adequacy of this component based on the design criteria and loadings shown. It is the responsibility of the customer and/or the contractor to ensure the component suitability of the intended application, and to verify the dimensions and loads.

**Lumber**

1. Dry service conditions, unless noted otherwise
2. LVL not to be treated with fire retardant or corrosive

chemicals

**Handling & Installation**

1. LVL beams must not be cut or drilled
2. Refer to manufacturer's product information regarding installation requirements, multi-ply fastening details, beam strength values, and code approvals
3. Damaged Beams must not be used
4. Design assumes top edge is laterally restrained
5. Provide lateral support at bearing points to avoid lateral displacement and rotation

6. For flat roofs provide proper drainage to prevent ponding

This design is valid until 11/13/2022

**Manufacturer Info**

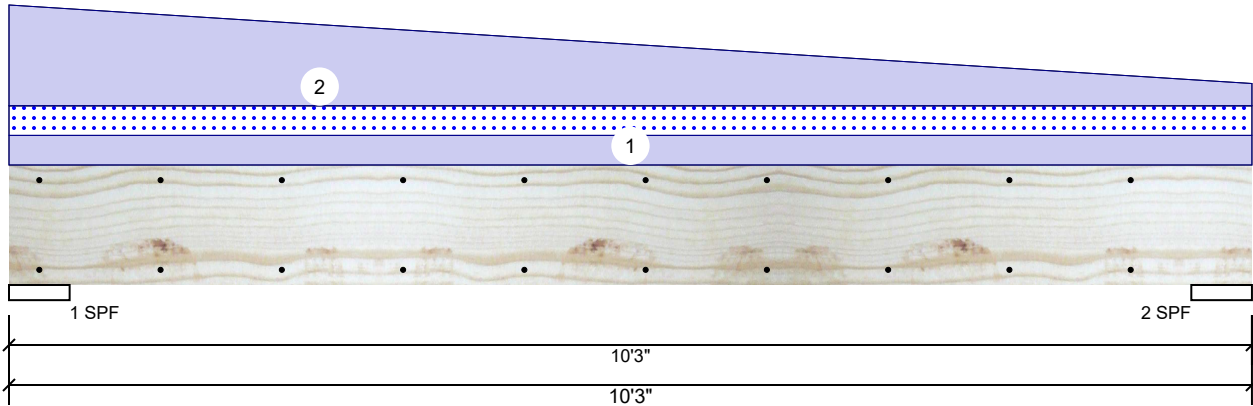
Metsä Wood  
 301 Merritt 7 Building, 2nd Floor  
 Norwalk, CT 06851  
 (800) 622-5850  
 www.metsawood.com/us  
 ICC-ES: ESR-3633

Comtech, Inc.  
 1001 S. Reilly Road, Suite #639  
 Fayetteville, NC  
 USA  
 28314  
 910-864-TRUS



**GDH2 Kerto-S LVL 1.750" X 11.875" 2-Ply - PASSED**

Level: Level



**Member Information**

Type:	Girder
Plies:	2
Moisture Condition:	Dry
Deflection LL:	480
Deflection TL:	360
Importance:	Normal
Temperature:	Temp <= 100°F

Application:	Floor
Design Method:	ASD
Building Code:	IBC/IRC 2015
Load Sharing:	No
Deck:	Not Checked

**Reactions UNPATTERNED lb (Uplift)**

Brg	Live	Dead	Snow	Wind	Const
1	0	411	103	0	0
2	0	314	103	0	0

**Bearings**

Bearing	Length	Cap.	React D/L lb	Total	Ld. Case	Ld. Comb.
1 - SPF	6.000"	6%	411 / 103	514	L	D+S
2 - SPF	6.000"	5%	314 / 103	416	L	D+S

**Analysis Results**

Analysis	Actual	Location	Allowed	Capacity	Comb.	Case
Moment	999 ft-lb	4'11"	22897 ft-lb	0.044 (4%)	D+S	L
Unbraced	999 ft-lb	4'11"	9857 ft-lb	0.101 (10%)	D+S	L
Shear	278 lb	1'5 1/8"	7980 lb	0.035 (3%)	D	Uniform
LL Defl inch (L/26994)	0.004	5'1 1/2"	0.234 (L/480)	0.020 (2%)	S	L
TL Defl inch (L/5948)	0.019	5' 11/16"	0.312 (L/360)	0.060 (6%)	D+S	L

**Design Notes**

- 1 Fasten all plies using 2 rows of 10d Box nails (.128x3") at 12" o.c. Maximum end distance not to exceed 6".
- 2 Refer to last page of calculations for fasteners required for specified loads.
- 3 Girders are designed to be supported on the bottom edge only.
- 4 Top loads must be supported equally by all plies.
- 5 Top braced at bearings.
- 6 Bottom braced at bearings.
- 7 Lateral slenderness ratio based on single ply width.

ID	Load Type	Location	Trib Width	Side	Dead 0.9	Live 1	Snow 1.15	Wind 1.6	Const. 1.25	Comments
1	Uniform			Top	20 PLF	0 PLF	20 PLF	0 PLF	0 PLF	roof
2	Tapered Start	0-0-0		Top	68 PLF	0 PLF	0 PLF	0 PLF	0 PLF	wall
		End	10-3-0		15 PLF	0 PLF	0 PLF	0 PLF	0 PLF	
	Self Weight				9 PLF					

**Notes**  
 Calculated Structured Designs is responsible only of the structural adequacy of this component based on the design criteria and loadings shown. It is the responsibility of the customer and/or the contractor to ensure the component suitability of the intended application, and to verify the dimensions and loads.

**Lumber**  
 1. Dry service conditions, unless noted otherwise  
 2. LVL not to be treated with fire retardant or corrosive chemicals

**Handling & Installation**  
 1. LVL beams must not be cut or drilled  
 2. Refer to manufacturer's product information regarding installation requirements, multi-ply fastening details, beam strength values, and code approvals  
 3. Damaged Beams must not be used  
 4. Design assumes top edge is laterally restrained  
 5. Provide lateral support at bearing points to avoid lateral displacement and rotation

6. For flat roofs provide proper drainage to prevent ponding

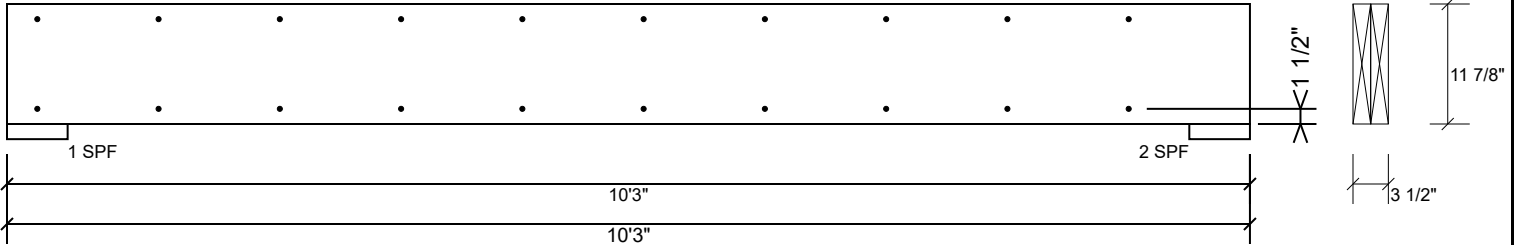
This design is valid until 11/13/2022

**Manufacturer Info**  
 Metsä Wood  
 301 Merritt 7 Building, 2nd Floor  
 Norwalk, CT 06851  
 (800) 622-5850  
 www.metsawood.com/us  
 ICC-ES: ESR-3633

Comtech, Inc.  
 1001 S. Reilly Road, Suite #639  
 Fayetteville, NC  
 USA  
 28314  
 910-864-TRUS

**GDH2 Kerto-S LVL 1.750" X 11.875" 2-Ply - PASSED**

Level: Level



**Multi-Ply Analysis**

Fasten all plies using 2 rows of 10d Box nails (.128x3") at 12" o.c.. Maximum end distance not to exceed 6"

Capacity	0.0 %
Load	0.0 PLF
Yield Limit per Foot	163.7 PLF
Yield Limit per Fastener	81.9 lb.
Yield Mode	IV
Edge Distance	1 1/2"
Min. End Distance	3"
Load Combination	
Duration Factor	1.00

**Notes**

Calculated Structured Designs is responsible only of the structural adequacy of this component based on the design criteria and loadings shown. It is the responsibility of the customer and/or the contractor to ensure the component suitability of the intended application, and to verify the dimensions and loads.

**Lumber**

1. Dry service conditions, unless noted otherwise
2. LVL not to be treated with fire retardant or corrosive

chemicals

**Handling & Installation**

1. LVL beams must not be cut or drilled
2. Refer to manufacturer's product information regarding installation requirements, multi-ply fastening details, beam strength values, and code approvals
3. Damaged Beams must not be used
4. Design assumes top edge is laterally restrained
5. Provide lateral support at bearing points to avoid lateral displacement and rotation

6. For flat roofs provide proper drainage to prevent ponding

This design is valid until 11/13/2022

**Manufacturer Info**

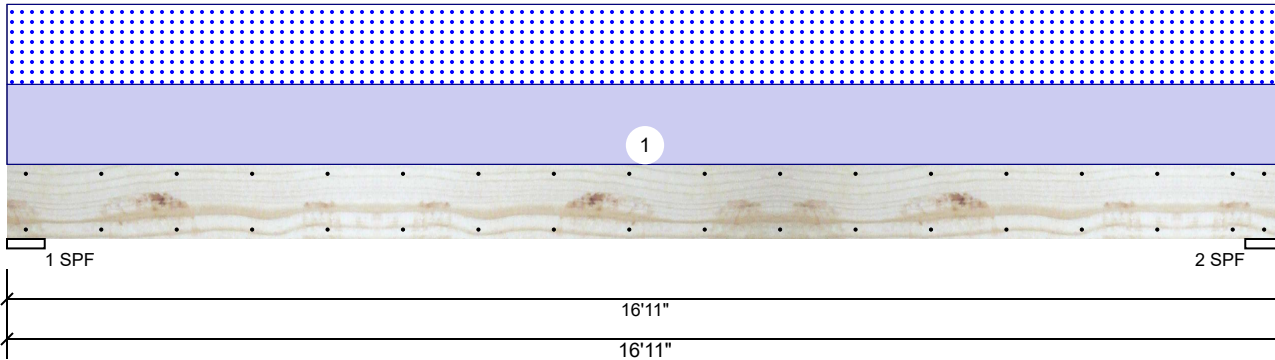
Metsä Wood  
 301 Merritt 7 Building, 2nd Floor  
 Norwalk, CT 06851  
 (800) 622-5850  
 www.metsawood.com/us  
 ICC-ES: ESR-3633

Comtech, Inc.  
 1001 S. Reilly Road, Suite #639  
 Fayetteville, NC  
 USA  
 28314  
 910-864-TRUS



**BM1 Kerto-S LVL 1.750" X 11.875" 2-Ply - PASSED**

Level: Level



**Member Information**

Type:	Girder
Plies:	2
Moisture Condition:	Dry
Deflection LL:	480
Deflection TL:	360
Importance:	Normal
Temperature:	Temp <= 100°F

Application:	Floor
Design Method:	ASD
Building Code:	IBC/IRC 2015
Load Sharing:	No
Deck:	Not Checked

**Reactions UNPATTERNED lb (Uplift)**

Brg	Live	Dead	Snow	Wind	Const
1	0	1000	922	0	0
2	0	1000	922	0	0

**Bearings**

Bearing	Length	Cap. React	D/L lb	Total	Ld. Case	Ld. Comb.
1 - SPF	6.000"	22%	1000 / 922	1922	L	D+S
2 - SPF	6.000"	22%	1000 / 922	1922	L	D+S

**Analysis Results**

Analysis	Actual	Location	Allowed	Capacity	Comb.	Case
Moment	7309 ft-lb	8'5 1/2"	22897 ft-lb	0.319 (32%)	D+S	L
Unbraced	7309 ft-lb	8'5 1/2"	7319 ft-lb	0.999 (100%)	D+S	L
Shear	1598 lb	1'5 1/8"	10197 lb	0.157 (16%)	D+S	L
LL Defl inch	0.176 (L/1094)	8'5 9/16"	0.401 (L/480)	0.440 (44%)	S	L
TL Defl inch	0.367 (L/525)	8'5 9/16"	0.535 (L/360)	0.690 (69%)	D+S	L

**Design Notes**

- 1 Fasten all plies using 2 rows of 10d Box nails (.128x3") at 12" o.c. Maximum end distance not to exceed 6".
- 2 Refer to last page of calculations for fasteners required for specified loads.
- 3 Girders are designed to be supported on the bottom edge only.
- 4 Top loads must be supported equally by all plies.
- 5 Top must be laterally braced at a maximum of 13'5 5/8" o.c.
- 6 Bottom braced at bearings.
- 7 Lateral slenderness ratio based on single ply width.

ID	Load Type	Location	Trib Width	Side	Dead 0.9	Live 1	Snow 1.15	Wind 1.6	Const. 1.25	Comments
1	Uniform			Top	109 PLF	0 PLF	109 PLF	0 PLF	0 PLF	A3-6
	Self Weight				9 PLF					

**Notes**

Calculated Structured Designs is responsible only of the structural adequacy of this component based on the design criteria and loadings shown. It is the responsibility of the customer and/or the contractor to ensure the component suitability of the intended application, and to verify the dimensions and loads.

**Lumber**

1. Dry service conditions, unless noted otherwise
2. LVL not to be treated with fire retardant or corrosive chemicals

**Handling & Installation**

1. LVL beams must not be cut or drilled
2. Refer to manufacturer's product information regarding installation requirements, multi-ply fastening details, beam strength values, and code approvals
3. Damaged Beams must not be used
4. Design assumes top edge is laterally restrained
5. Provide lateral support at bearing points to avoid lateral displacement and rotation

6. For flat roofs provide proper drainage to prevent ponding

This design is valid until 11/13/2022

**Manufacturer Info**

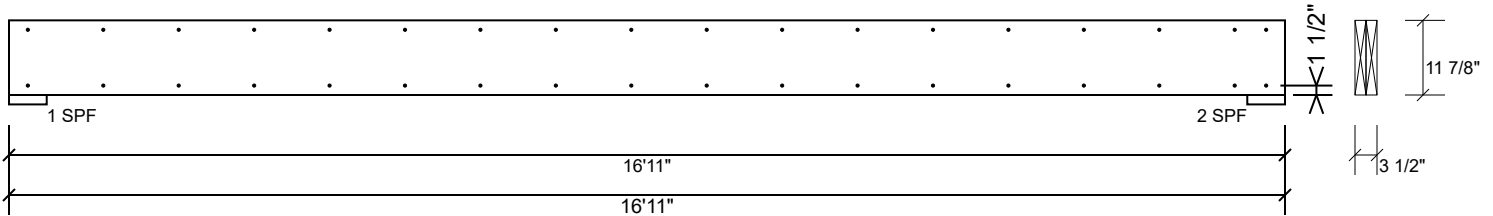
Metsä Wood  
 301 Merritt 7 Building, 2nd Floor  
 Norwalk, CT 06851  
 (800) 622-5850  
[www.metsawood.com/us](http://www.metsawood.com/us)  
 ICC-ES: ESR-3633

Comtech, Inc.  
 1001 S. Reilly Road, Suite #639  
 Fayetteville, NC  
 USA  
 28314  
 910-864-TRUS



**BM1 Kerto-S LVL 1.750" X 11.875" 2-Ply - PASSED**

Level: Level



**Multi-Ply Analysis**

Fasten all plies using 2 rows of 10d Box nails (.128x3") at 12" o.c.. Maximum end distance not to exceed 6"

Capacity	0.0 %
Load	0.0 PLF
Yield Limit per Foot	163.7 PLF
Yield Limit per Fastener	81.9 lb.
Yield Mode	IV
Edge Distance	1 1/2"
Min. End Distance	3"
Load Combination	
Duration Factor	1.00

**Notes**

Calculated Structured Designs is responsible only of the structural adequacy of this component based on the design criteria and loadings shown. It is the responsibility of the customer and/or the contractor to ensure the component suitability of the intended application, and to verify the dimensions and loads.

**Lumber**

1. Dry service conditions, unless noted otherwise
2. LVL not to be treated with fire retardant or corrosive

chemicals

**Handling & Installation**

1. LVL beams must not be cut or drilled
2. Refer to manufacturer's product information regarding installation requirements, multi-ply fastening details, beam strength values, and code approvals
3. Damaged Beams must not be used
4. Design assumes top edge is laterally restrained
5. Provide lateral support at bearing points to avoid lateral displacement and rotation

6. For flat roofs provide proper drainage to prevent ponding

This design is valid until 11/13/2022

**Manufacturer Info**

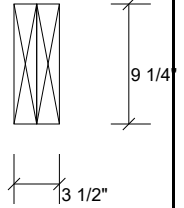
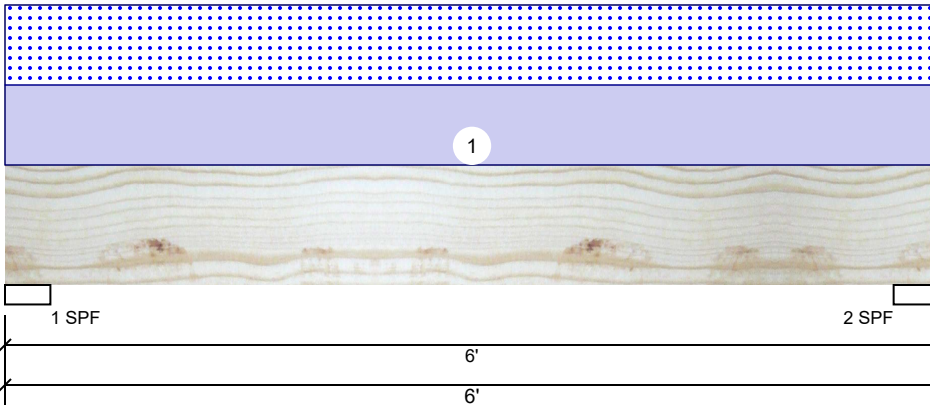
Metsä Wood  
 301 Merritt 7 Building, 2nd Floor  
 Norwalk, CT 06851  
 (800) 622-5850  
 www.metsawood.com/us  
 ICC-ES: ESR-3633

Comtech, Inc.  
 1001 S. Reilly Road, Suite #639  
 Fayetteville, NC  
 USA  
 28314  
 910-864-TRUS



**BM2 Kerto-S LVL 1.750" X 9.250" 2-Ply - PASSED**

Level: Level



**Member Information**

Type:	Girder
Plies:	2
Moisture Condition:	Dry
Deflection LL:	480
Deflection TL:	240
Importance:	Normal
Temperature:	Temp <= 100°F

Application:	Floor
Design Method:	ASD
Building Code:	IBC/IRC 2015
Load Sharing:	No
Deck:	Not Checked

**Reactions UNPATTERNED lb (Uplift)**

Brg	Live	Dead	Snow	Wind	Const
1	0	1405	1383	0	0
2	0	1405	1383	0	0

**Bearings**

Bearing	Length	Cap.	React D/L	Ib	Total	Ld. Case	Ld. Comb.
1 - SPF	3.500"	54%	1405 / 1383	2788	L	D+S	
2 - SPF	3.500"	54%	1405 / 1383	2788	L	D+S	

**Analysis Results**

Analysis	Actual	Location	Allowed	Capacity	Comb.	Case
Moment	3567 ft-lb	3'	14423 ft-lb	0.247 (25%)	D+S	L
Unbraced	3567 ft-lb	3'	11027 ft-lb	0.323 (32%)	D+S	L
Shear	1858 lb	5'	7943 lb	0.234 (23%)	D+S	L
LL Defl inch	0.027 (L/2419)	3'	0.139 (L/480)	0.200 (20%)	S	L
TL Defl inch	0.055 (L/1200)	3'	0.277 (L/240)	0.200 (20%)	D+S	L

**Design Notes**

- Girders are designed to be supported on the bottom edge only.
- Multiple plies must be fastened together as per manufacturer's details.
- Top loads must be supported equally by all plies.
- Top braced at bearings.
- Bottom braced at bearings.
- Lateral slenderness ratio based on single ply width.

ID	Load Type	Location	Trib Width	Side	Dead 0.9	Live 1	Snow 1.15	Wind 1.6	Const. 1.25	Comments
1	Uniform			Top	461 PLF	0 PLF	461 PLF	0 PLF	0 PLF	A10-A11
	Self Weight				7 PLF					

**Notes**

Calculated Structured Designs is responsible only of the structural adequacy of this component based on the design criteria and loadings shown. It is the responsibility of the customer and/or the contractor to ensure the component suitability of the intended application, and to verify the dimensions and loads.

**Lumber**

- Dry service conditions, unless noted otherwise
- LVL not to be treated with fire retardant or corrosive chemicals

**Handling & Installation**

- LVL beams must not be cut or drilled
- Refer to manufacturer's product information regarding installation requirements, multi-ply fastening details, beam strength values, and code approvals
- Damaged Beams must not be used
- Design assumes top edge is laterally restrained
- Provide lateral support at bearing points to avoid lateral displacement and rotation

6. For flat roofs provide proper drainage to prevent ponding

This design is valid until 11/13/2022

**Manufacturer Info**

Metsä Wood  
 301 Merritt 7 Building, 2nd Floor  
 Norwalk, CT 06851  
 (800) 622-5850  
[www.metsawood.com/us](http://www.metsawood.com/us)  
 ICC-ES: ESR-3633

Comtech, Inc.  
 1001 S. Reilly Road, Suite #639  
 Fayetteville, NC  
 USA  
 28314  
 910-864-TRUS

