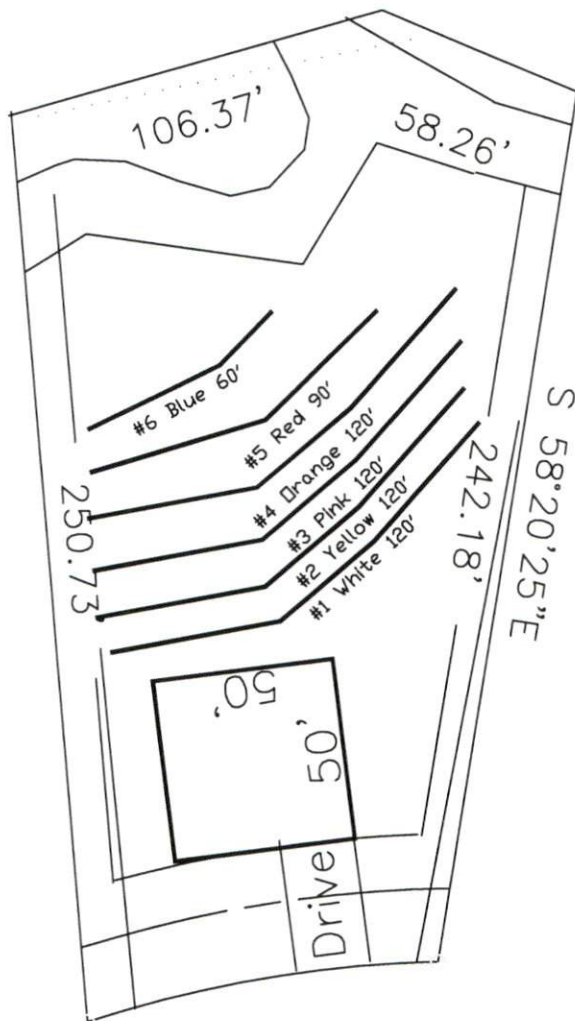


Highland Grove 4-Bedroom Septic Proposal Lot #11



11

32,725 SQ.FT.

This drawing represents a preliminary septic plan made prior to final construction activities. A revised plan may need to be reworked at time of permitting.

*If plumbing is not sufficient a separate pump and tank may be required.

System: Gravity to D-Box
 Lines: 1-3 (360')
 0.35 LTAR
 24" Trench Bottom
 Accepted Status System
 Repair: Pressure Manifold
 Lines: 4-6 (270')
 0.35 LTAR
 24" Trench Bottom
 T&J Panel - 50% Reduction System

Adams
 Soil Consulting
 919-414-6761
 Job #561