

ROOSEVELT



ROOSEVELT REVISION LIST - STRUCTURAL:

- 1.) DOWNSIZED SOME WINDOW HEADERS TO (2) 2 x 6 OR (2) 2 x 8 (4-17)
- 2.) EXTRA JOIST LOCATIONS (4-17)
- 3.) ADDED HEADER SIZES FOR BRICK OPTIONS (4-17)
- 4.) 3-PLY HEADERS AT GARAGES (4-17)
- 5.) PORTAL FRAMING CHANGES AT CONTINUOUS DOUBLE GARAGE DOOR HEADERS (4-17)
- 6.) REMOVED BALLOON FRAMING FROM REMOVING SECOND FLOOR VAULTS (4-17)
- 7.) ADDED JOIST SERIES/SPACING TO PLANS (4-17)
- 8.) ADDED BASEMENT FRAMING FOR AREA FORMERLY CRAWL SPACE (4-17)
- 9.) SOME RECONFIGURATION OF PIERS ON CRAWL (4-17)

ROOSEVELT REVISION LIST - ARCHITECTURAL:

1. UPDATED DATES ON ALL SHEETS (05-01-20)
2. CHANGED ALL NOTES ON ELEVATIONS FOR GARAGE AS SPECIFIED (05-01-20)
3. UPDATED LOCATION AND VERIFIED ALL COACH LIGHTS ON ELEVATIONS (05-01-20)
4. CHANGED CORNER BOARDS ON ALL ELEVATIONS FROM 6" TO 4" (05-01-20)
5. REMOVED GRIDS FROM TRANSOMS AND SIDELIGHTS AROUND FRONT DOOR ON ALL ELEVATIONS (05-01-20)
6. REMOVED GRIDS FROM ALL SIDES AND REAR ELEVATIONS (05-01-20)
7. DIMENSIONED WATER TABLE WHERE APPLICABLE (05-01-20)
8. ADDED SHEETS FOR A-2/A-3, B-2/B-3, & C-2/C-3 WITH BRICK AND WITH STONE (05-01-20)
9. ADDED SHEETS FOR A-4, B-4, & C-4 (05-01-20)
10. UPDATED STONE HATCH TO REPRESENT STONE BETTER (05-01-20)
11. REMOVED DUPLICATE DIMENSIONS FROM A-2/A-3, B-2/B-3, & C-2/C-3 (05-01-20)
12. REMOVED SHINGLE HATCH FROM ALL ELEVATIONS (05-01-20)
13. ADDED COLUMN DETAIL TO ELEVATION B-1 & B-4 ON SHEETS A-2 AND A-2.3 (05-01-20)
14. REMOVED HARDWARE FROM SHUTTERS ON ALL C ELEVATIONS (05-01-20)
15. ADDED DIAGONAL DIMENSIONS TO SLAB INTERFACE PLAN (05-01-20)
16. ADDED OPTIONAL FLOOR OUTLETS TO SLAB INTERFACE PLAN (05-01-20)
17. CREATED PARTIAL PLANS FOR EACH ELEVATION LAYOUT TO SHOW LOCATION OF BRICK/STONE (05-01-20)
18. ADDED OPTIONAL GAS LINE (05-01-20)
19. UPDATED "GOURMET KITCHEN" LAYOUT (05-01-20)
20. VERIFIED AND UPDATED SQUARE FOOTAGE CALCULATIONS WITH AND WITHOUT FULL BRICK VENEER (05-01-20)
21. VERIFIED ALL ROOM DIMENSIONS (05-01-20)
22. ADD HOSE BIB LOCATIONS 2'-0" FROM CORNER OF HOUSE (05-01-20)
23. MOVED ALL OPTIONS TO SEPARATE SHEET (05-01-20)
24. CHANGED STANDARD PATIO AND OPTIONAL PATIO TO SIZE 12'x10' (05-01-20)
25. CHANGED ALL EXTERIOR WALLS FROM 2x6 TO 2x4 EXCEPT WHERE SHADED (05-01-20)
26. ADDED "34 1/2" HIGH WALL TO ISLAND IN KITCHEN (05-01-20)
27. VERIFIED VENTILATION AND LIGHT REQUIREMENTS AT OWNER'S BEDROOM MEETS CODE (05-01-20)
28. REMOVED ALL CASED OPENINGS (C.O.) FROM PLAN (05-01-20)
29. UPDATED COLUMNS ON COVERED REAR PORCH TO 8x8 COLUMNS (05-01-20)
30. ADDED SHEET AD-1 WALL SECTIONS AND STAIR DETAIL (05-01-20)
31. REMOVED NUMBER (#) SIGN FROM ALL TITLES (05-01-20)
32. REMOVED ALL NUMBERS FROM STAIRS (05-01-20)
33. NOTED WASHER/ DRYER AS "OPT. W/D" (05-01-20)
34. UPDATED BASEMENT SHEET (05-01-20)
35. CHANGED ALL CEILING FANS TO SHOW STANDARD LIGHT/OPT. FAN/LT PREWIRE (05-01-20)
36. UPDATED ELECTRICAL KEY ON ALL ELECTRICAL SHEETS (05-01-20)
37. CHANGED PENDANT LIGHTS OVER ISLAND TO OPTIONAL (05-01-20)
38. ADDED STANDARD 2-BULB (2x4) FLUORESCENT LIGHT IN KITCHEN (05-01-20)
39. FLOOD LIGHTS SHOWN AS OPTIONAL (05-01-20)
40. VERIFIED COACH LIGHT LOCATIONS (05-01-20)
41. UPDATED TOTAL UNDER ROOF VENT CALCULATIONS (05-01-20)

Buyer Marked Plan

Okm000074



COVER SHEET

H&H HOMES
ROOSEVELT

DATE: APRIL 26, 2017
REV.: MAY 01, 2020
DRAWN BY:
ENGINEERED BY:
REVIEWED BY:

CS

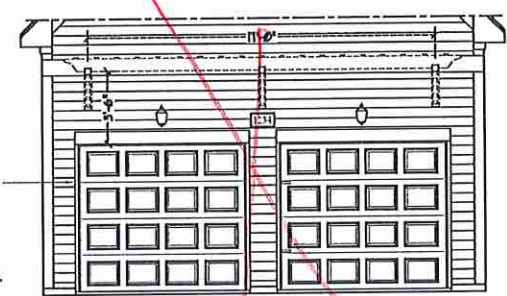


- SHINGLES AS SPEC. (TYP.)
- DECORATIVE GABLE VENT AS SPEC. (TYP.)
- 1 x 8 TRIM AS SPEC. (TYP.)
- 1 x 6 FRIEZE BOARD AS SPEC. (TYP. FRONT ELEVATION ONLY)
- SIDING AS SPEC. (TYP.)
- 1 x 8 TRIM AS SPEC.
- OPTIONAL BRACKETS AND TRELLIS AS SPEC.
- ADDRESS PLAQUE AS SPEC. (TYP.)
- 1 x 8 TRIM AS SPEC.
- EXTERIOR LIGHT AS SPEC. (TYP.)
- 1 x 6 TRIM AS SPEC. (TYP.)
- GARAGE DOOR AS PER SPECIFICATIONS, OPTIONAL GLASS INSERT (TOP PANEL ONLY)
- OPTIONAL GARAGE

NOTE:
 SEE SHEET A-11 FOR BRICK FRONT ELEVATIONS
 SEE SHEET A-12 FOR STONE FRONT ELEVATIONS
 SEE SHEET A-13 (ALL BRICK) ELEVATIONS

Brick

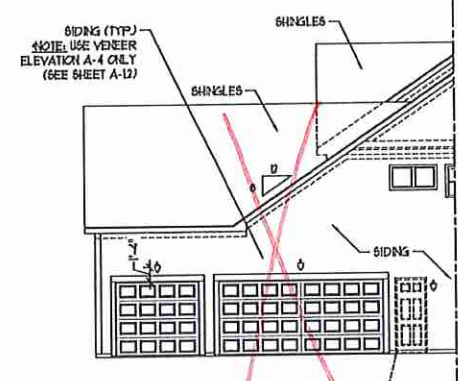
FRONT ELEVATION-A
 SCALE: 1/4" = 1'-0"



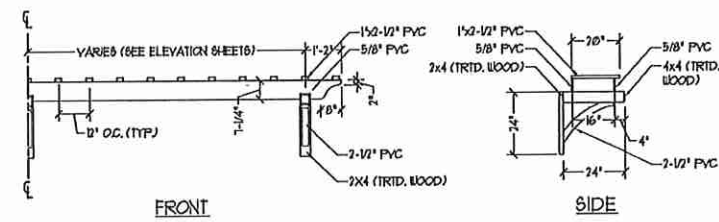
DOUBLE GARAGE DOOR OPTION
 W/ OPTIONAL TRELLIS
 (TRELLIS AVAILABLE WITH STANDARD SINGLE GARAGE DOOR)
 SCALE: 1/4" = 1'-0"



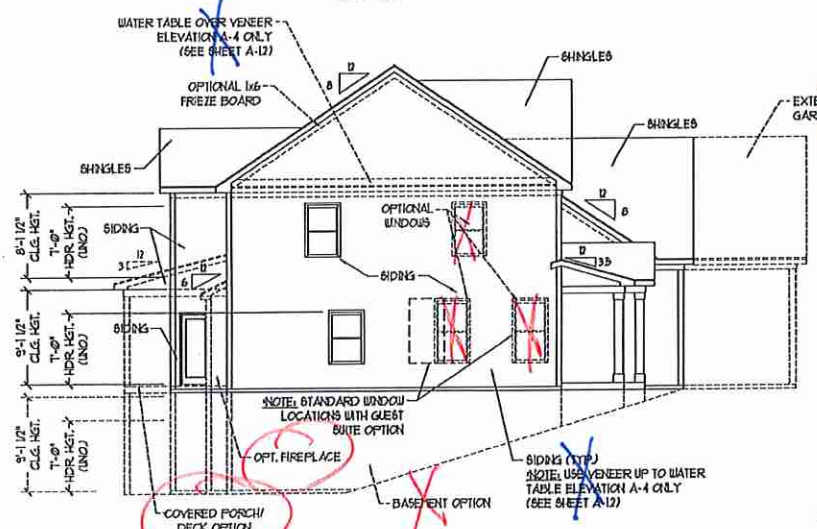
SIDE LOAD GARAGE OPTION
 (NOT AVAILABLE WITH OPTIONAL ONE-CAR GARAGE)
 SCALE: 1/4" = 1'-0"



PARTIAL ELEVATION
 W/ THREE CAR GARAGE OPTION
 SCALE: 1/8" = 1'-0"



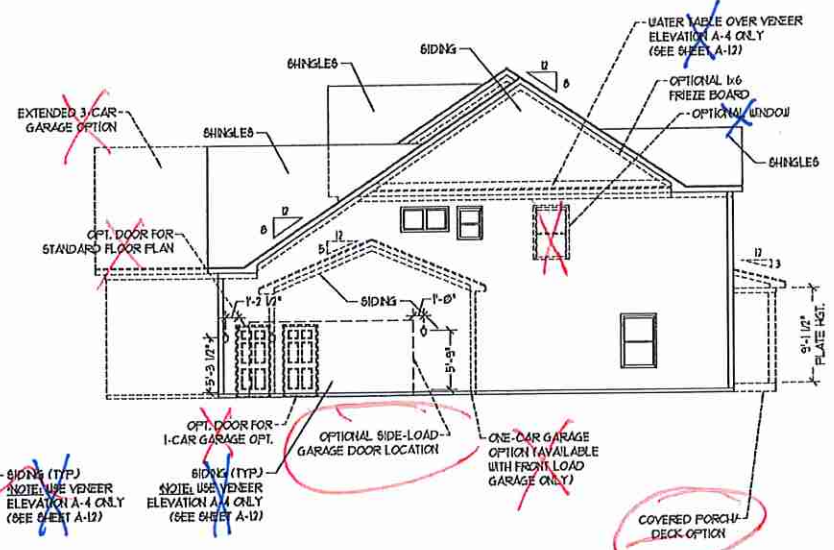
OPTIONAL TRELLIS DETAIL
 SCALE: NTS



SIDE ELEVATION
 SCALE: 1/8" = 1'-0"

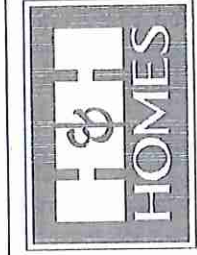


REAR ELEVATION
 SCALE: 1/8" = 1'-0"



SIDE ELEVATION
 SCALE: 1/8" = 1'-0"

J.S. THOMPSON ENGINEERING, INC.
 650 WADE AVE., SUITE 104
 RALEIGH, NC 27608
 PHONE: (919) 782-9216
 FAX: (919) 782-9221
 N.C. LICENSE NO. C-113



PRICE PROJECTIONS, INSURANCES, FEATURES, OPTIONS, FLOOR PLANS, ELEVATIONS, DESIGN, MATERIALS AND DIMENSIONS ARE SUBJECT TO CHANGE WITHOUT NOTICE. BUYERS MAY MAKE ANY CHANGES TO THIS PLAN AT ANY TIME PRIOR TO CONSTRUCTION. ACTUAL POSITION OF HOUSE ON LOT WILL BE DETERMINED BY THE SITE PLAN AND PLAT PLAN. FLOOR PLANS AND ELEVATIONS MAY BE REPRODUCED, ADAPTED, OR DISPLAYED IN ANY MANNER WITHOUT THE WRITTEN PERMISSION OF H&H HOMES. ANY USE, REPRODUCTION, ADAPTATION, OR DISPLAY OF THE PLANS IS STRICTLY PROHIBITED. SEE THE LICENSE FOR FULL TERMS AND CONDITIONS. © 2020 H&H HOMES

H&H HOMES, INC.
 ROOSEVELT

DATE: APRIL 26, 2017
 REV.: MAY 01, 2020
 SCALE: AS NOTED
 DRAWN BY:
 ENGINEERED BY:
 REVIEWED BY:

A-1 ELEVATION
 A-1

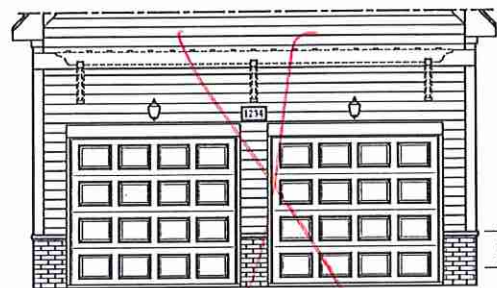
OKM-000-074 Buyer Marked Plan

Jcef AV



FRONT ELEVATION-A-2
SCALE: 1/4" = 1'-0"

Brick



DOUBLE GARAGE DOOR OPTION
W/ OPTIONAL TRELLIS
(TRELLIS AVAILABLE WITH STANDARD SINGLE GARAGE DOOR)
SCALE: 1/4" = 1'-0"



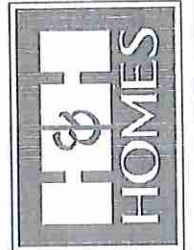
SIDE LOAD
GARAGE OPTION
(NOT AVAILABLE WITH OPTIONAL ONE-CAR GARAGE)
SCALE: 1/4" = 1'-0"



VENEER LEDGE
AS SPEC. (TYP)

FRONT ELEVATION-A-3
SCALE: 1/4" = 1'-0"

J.S. THOMPSON
ENGINEERING, INC.
600 WADE AVE. SUITE 104
RALEIGH, NC 27605
PHONE: (919) 884-9119
FAX: (919) 887-9221
N.C. LICENSE NO. G1113

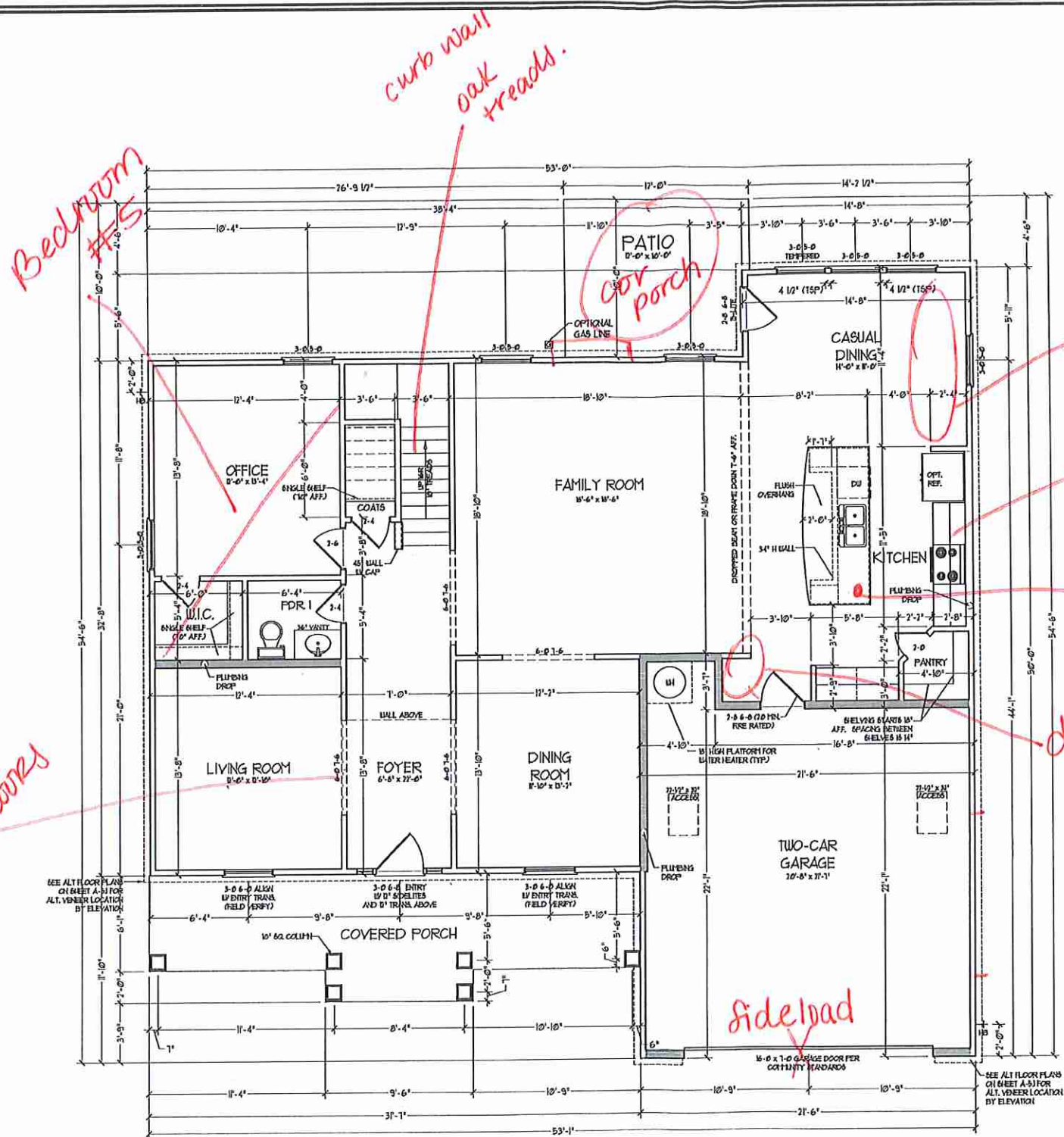


PRICES, PERMITS, INCENTIVES, FEATURES, OPTIONS, FLOOR PLANS, ELEVATIONS, DESIGNS, MATERIALS AND DIMENSIONS ARE SUBJECT TO CHANGE WITHOUT NOTICE. CONTRACTORS SHALL VERIFY ALL DIMENSIONS, MATERIALS, AND METHODS OF CONSTRUCTION. ACTUAL POSITION OF HOUSE ON LOT WILL BE DETERMINED BY THE SITE PLAN AND LOT PLAN. FLOOR PLANS AND ELEVATIONS MAY BE MODIFIED WITHOUT NOTICE. REPRODUCTION, ADAPTATION, OR DISPLAY OF THE PAPER IS STRICTLY PROHIBITED. SEE BUYER'S SALES CONTRACT FOR CURRENT DETAILS, COPYRIGHT © 2017 H&H HOMES

H&H HOMES, INC.
ROOSEVELT

DATE: APRIL 26, 2017
REV.: MAY 01, 2020
SCALE: AS NOTED
DRAWN BY:
ENGINEERED BY:
REVIEWED BY:
A-2 & A-3
ELEVATIONS W/
STONE

A-1.1



SQUARE FOOTAGE	
1st FLOOR	1847 SQ. FT.
2nd FLOOR	1663 SQ. FT.
TOTAL	3,510 SQ. FT.
GARAGE	
FRONT PORCH (A ELEVATION)	207 SQ. FT.
FRONT PORCH (B ELEVATION)	207 SQ. FT.
FRONT PORCH (C ELEVATION)	193 SQ. FT.
STANDARD REAR PATIO	81 SQ. FT.
OPTIONAL BASEMENT	1433 SQ. FT.
1st FLOOR OPTIONS	
OPTIONAL PREFRACE	19 SQ. FT.
UNHEATED OPTIONS	
OPT 1-CAR GARAGE	240 SQ. FT.
OPT 2-CAR X 10'-0" PORCH	80 SQ. FT.
OPT COVERED REAR PORCH	81 SQ. FT.
OPT 3-CAR SIDE ENTRY GARAGE	201 SQ. FT.

SQUARE FOOTAGE W/ FULL BRICK VENEER	
1st FLOOR	1646 SQ. FT.
2nd FLOOR	1517 SQ. FT.
TOTAL	3363 SQ. FT.
GARAGE	
FRONT PORCH (A ELEVATION)	48 SQ. FT.
FRONT PORCH (B ELEVATION)	207 SQ. FT.
FRONT PORCH (C ELEVATION)	193 SQ. FT.
STANDARD REAR PATIO	81 SQ. FT.
OPTIONAL BASEMENT	1444 SQ. FT.
1st FLOOR OPTIONS	
OPTIONAL PREFRACE	14 SQ. FT.
UNHEATED OPTIONS	
OPT 1-CAR GARAGE	226 SQ. FT.
OPT 2-CAR X 10'-0" PORCH	80 SQ. FT.
OPT COVERED REAR PORCH	81 SQ. FT.
OPT 3-CAR SIDE ENTRY GARAGE	140 SQ. FT.

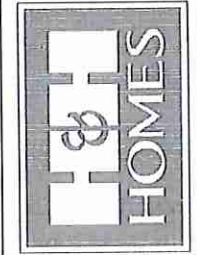
NOTES: ALL EXTERIOR WALLS AND ATIC WALLS ARE TO BE 2" x 4" @ 16" O.C. (UNCL). ALL INTERIOR LOAD BEARING WALLS ARE TO BE 2" x 4" @ 16" O.C. (UNCL) AND HIGH-LOAD BEARING INTERIOR WALLS ARE TO BE 2" x 4" @ 24" O.C. (UNCL).

2nd WALL

* UNCLAD WALLS ARE TO BE 2" x 6" @ 16" O.C. (LOAD BEARING) OR 2" x 8" @ 24" O.C. (NON-LOAD BEARING) REGARDLESS OF EXTERIOR WALL CONDITION.

PROVIDE MINIMUM INSULATION IN CEILINGS AND WALLS PER SECTION N 102.1

J.S. THOMPSON
ENGINEERING, INC.
100 W. WALKER AVE., SUITE 101
RALEIGH, NC 27605
PHONE: (919) 261-9919
FAX: (919) 261-9923
N.C. LICENSE NO. C-1133



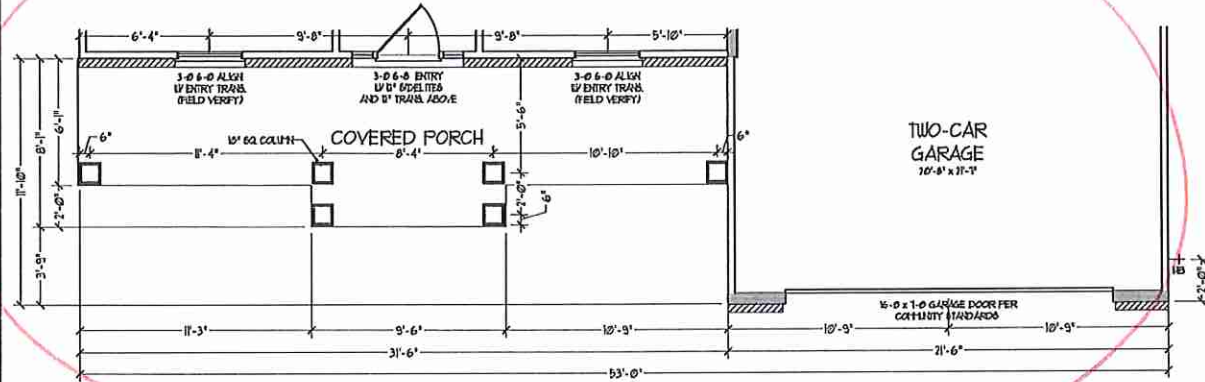
PRICES, PROMOTIONS, INCENTIVES, FEATURES, OPTIONS, FLOOR PLANS, ELEVATIONS, DESIGN, MATERIALS, FINISHES, SQUARE FOOTAGE AND DIMENSIONS ARE ESTIMATED AND MAY VARY IN ACTUAL CONSTRUCTION. ACTUAL PORTION OF HOUSE ON LOT, CONSTRUCTION, ACTUAL PORTION OF HOUSE ON LOT, FLOOR PLANS AND ELEVATIONS HEADINGS ARE INTENT CONCEPTS. H&H HOMES, INC. IS THE COPYRIGHTED PROPERTY OF H&H HOMES, INC. ANY USE, REPRODUCTION, OR DISTRIBUTION OF THIS DOCUMENT IS PROHIBITED. SEE BUYER'S SALES CONTRACT FOR CURRENT DETAILS. COPYRIGHT © 2020 H&H HOMES

H&H HOMES, INC.
ROOSEVELT

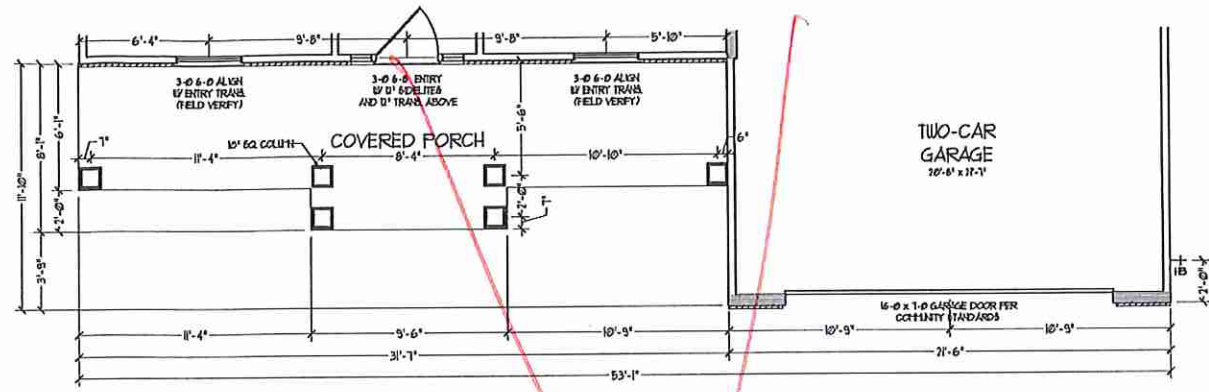
DATE: APRIL 26, 2017
REV.: MAY 01, 2020
SCALE: 1/4"=1'-0"
DRAWN BY:
ENGINEERED BY:
REVIEWED BY:

FIRST FLOOR PLAN
A-6

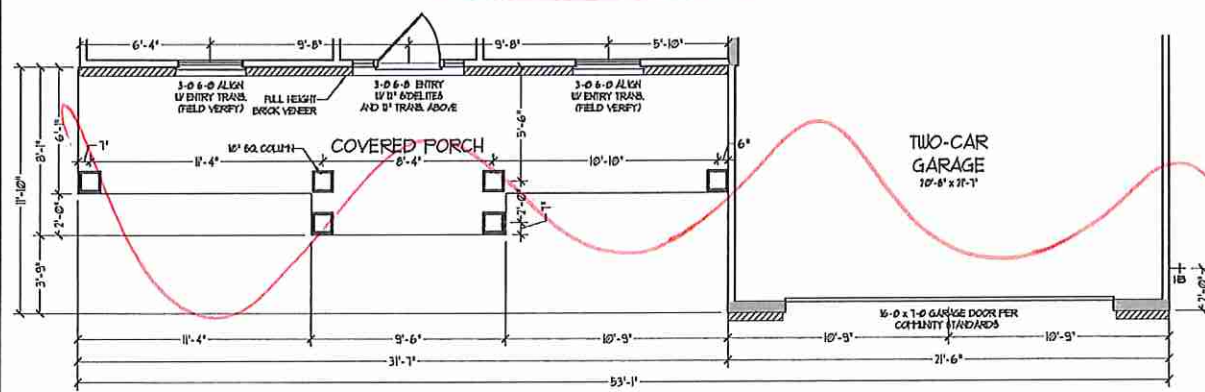
AL JGP



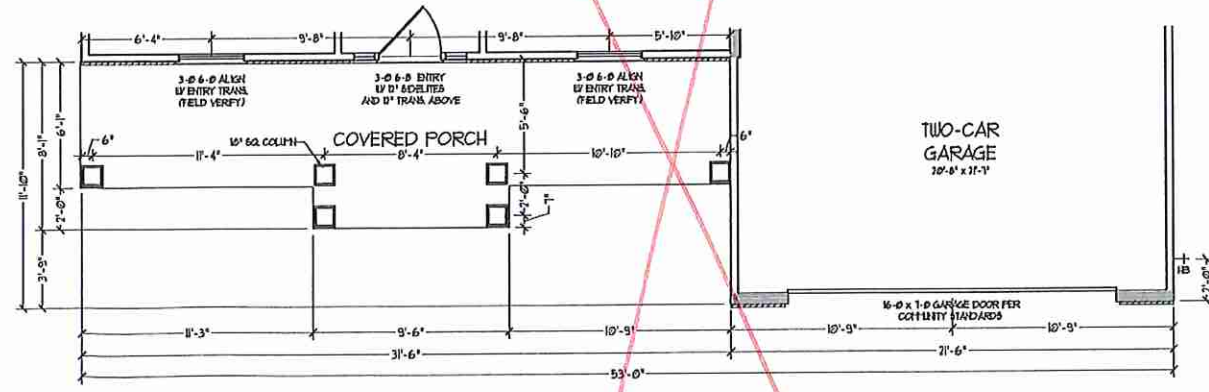
ELEVATION A-2
(WITH BRICK)



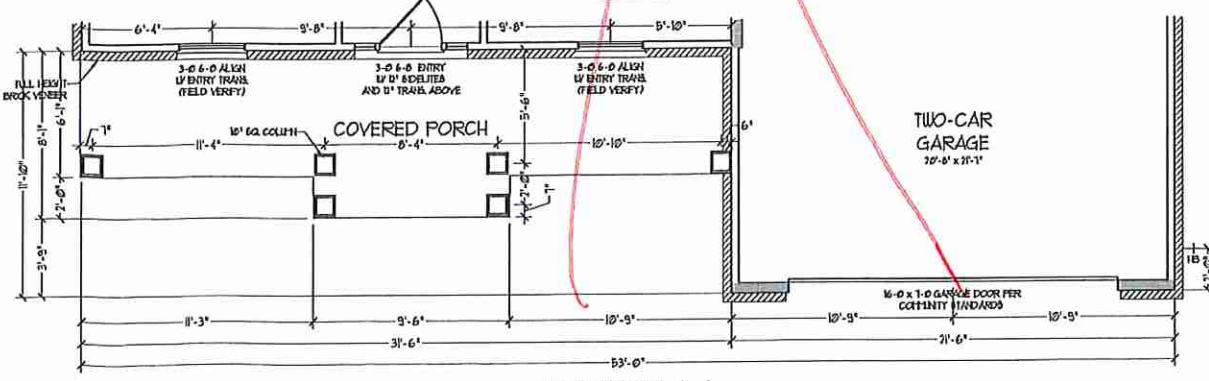
ELEVATION A-2
(WITH STONE)



ELEVATION A-3
(WITH BRICK)

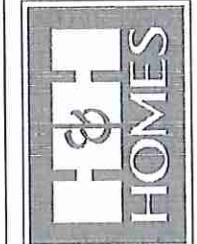


ELEVATION A-3
(WITH STONE)



ELEVATION A-4
(WITH STONE)

J.S. THOMPSON
REGISTERED ARCHITECT
685 WARE AVE. SUITE 104
RALEIGH, NC 27605
PHONE: (919) 885-9198
FAX: (919) 789-9921
N.C. LICENSE NO. C4133

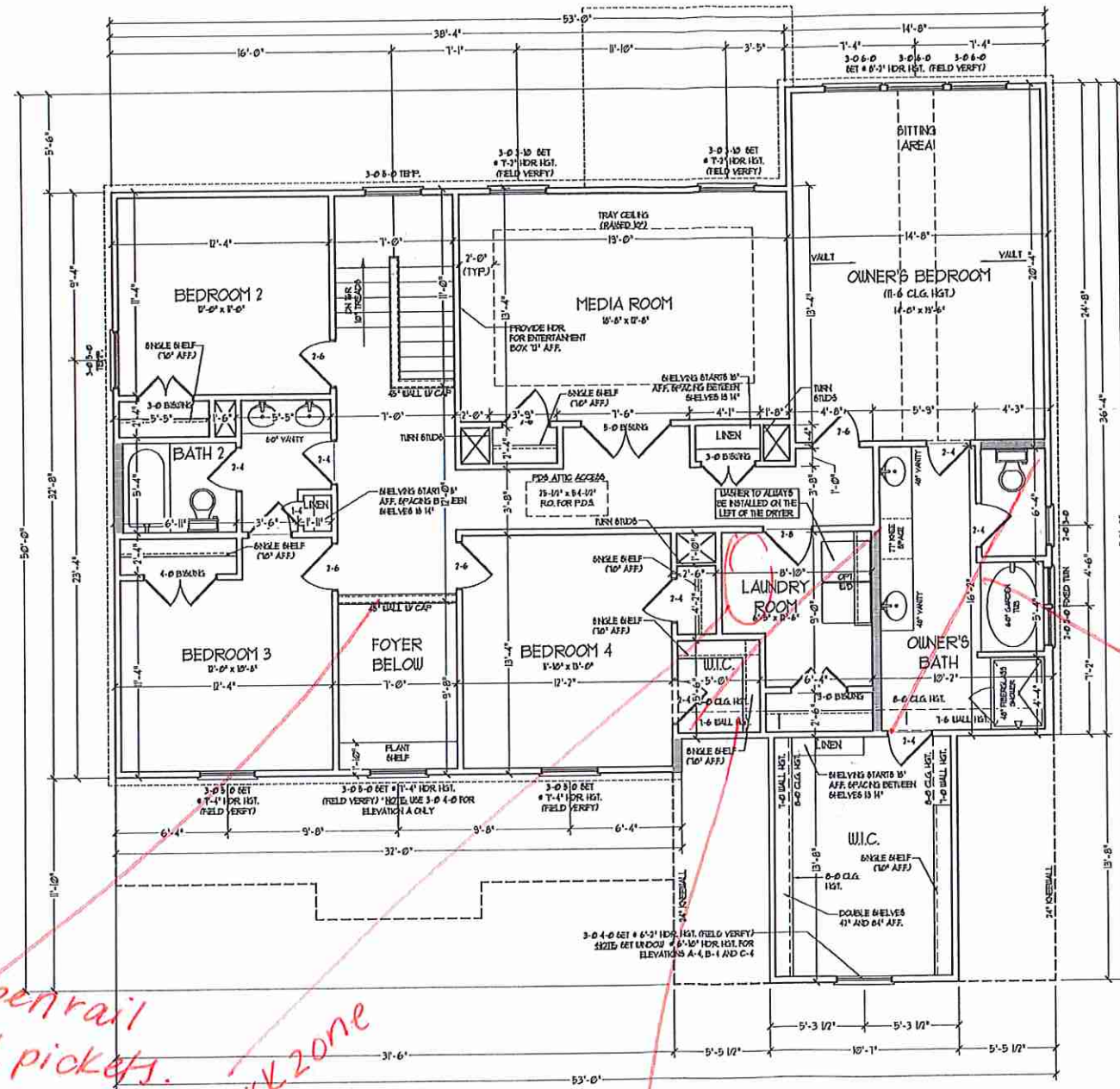


PRICES, PROMOTIONS, INCENTIVES, FEATURES, OPTIONS, FLOOR PLANS, ELEVATIONS, DESIGNS, MATERIALS AND DIMENSIONS ARE SUBJECT TO CHANGE WITHOUT NOTICE AND MAY VARY IN ACTUAL CONSTRUCTION. ACTUAL POSITION OF HOUSE ON LOT WILL BE DETERMINED BY THE SITE PLAN AND THE FINAL CONCEPTIONS. FLOOR PLANS ARE THE COPYRIGHTED PROPERTY OF H&H HOMES, INC. ANY REPRODUCTION, ADAPTATION OR USE OF THESE PLANS WITHOUT THE WRITTEN CONSENT OF H&H HOMES, INC. IS PROHIBITED. CURRENT DETAILS, COPYRIGHT © 2020 H&H HOMES.

H&H HOMES, INC.
ROOSEVELT

DATE: APRIL 26, 2017
REV.: MAY 01, 2020
SCALE: 1/4"=1'-0"
DRAWN BY:
ENGINEERED BY:
REVIEWED BY:
FIRST FLOOR
PARTIAL PLANS -
A ELEVATIONS

A-6.2



SECOND FLOOR PLAN

NOTE: ALL EXTERIOR WALLS AND ATTIC WALLS ARE TO BE 2 x 4 @ 16" O.C. (AND) ALL INTERIOR LOAD BEARING WALLS ARE TO BE 2 x 4 @ 16" O.C. (AND) ALL NON-LOAD BEARING INTERIOR WALLS ARE TO BE 2 x 4 @ 16" O.C. (AND)

2x6 WALL

* BRACED WALLS ARE TO BE 2 x 6 @ 8" O.C. (LOAD BEARING) OR 2 x 6 @ 24" O.C. (NON-LOAD BEARING) REGARDLESS OF EXTERIOR WALL CONDITION

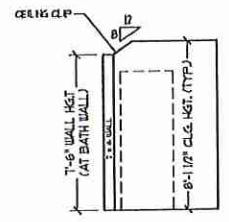
* PROVIDE MINIMUM INSULATION IN CEILING AND WALLS PER SECTION N 11021

Owner's Bath #2

open rail wood pickets.

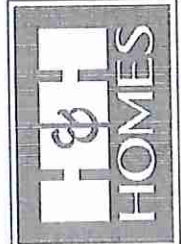
work zone

Bath #4



CLIPPED CEILING OWNER'S BATH AND BEDROOM 4 BATH

J.S. THOMPSON
ENGINEERING, INC.
628 WADE AVE. SUITE 104
RALEIGH, NC 27605
PHONE: (919) 289-9246
FAX: (919) 783-9221
N.C. LICENSE NO. C113



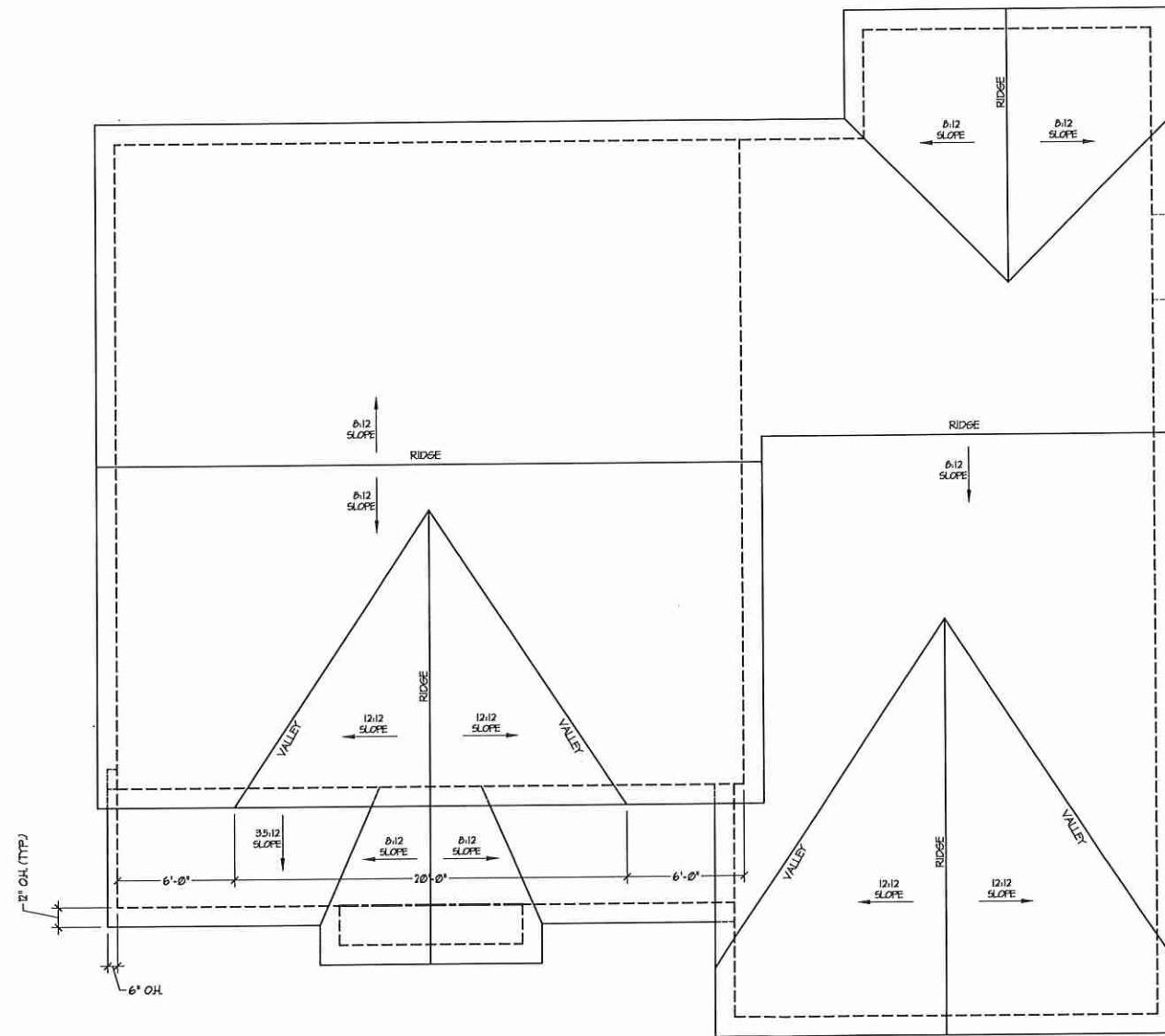
PERMITS, PROJECTIONS, MODIFICATIONS, FEATURES, OPTIONS, FLOOR PLANS, ELEVATIONS, DESIGN, MATERIALS AND DIMENSIONS ARE SUBJECT TO CHANGE WITHOUT NOTICE. SQUARE FOOTAGE AND DIMENSIONS WILL BE DETERMINED BY THE SITE PLAN AND PLAT PLAN. FLOOR PLANS AND ELEVATIONS REPRESENT APPROXIMATE PROPERTY OF H&H HOMES. ANY USE, REPRODUCTION, ADAPTATION, OR DISPLAY OF THE PLANS IS STRICTLY PROHIBITED. SEE H&H HOMES SALES CONTRACT FOR CURRENT DETAILS OF PERMITS & LOCAL RULES.

H&H HOMES, INC.
ROOSEVELT

DATE: APRIL 26, 2017
REV.: MAY 01, 2020
SCALE: 1/4" = 1'-0"
DRAWN BY:
ENGINEERED BY:
REVIEWED BY:

SECOND FLOOR PLAN
A-7

AL



ROOF PLAN

TOTAL UNDER ROOF AREA: 1918 SQ. FT. / 300 = 6.39 SQ. FT.
 VENTING AREA REQUIRED: LOWER: 3.19 UPPER: 3.19
 TOTAL REQUIREMENTS: LOWER: 3.19 UPPER: 3.19

LOWER AREA VENTING

SOFFIT VENT	SIZE:	PER UNIT:	# UNITS:	PROVIDED:
	-	.041 SF/LF	79'-0"	3.239
LOWER AREA VENTING PROVIDED:				-

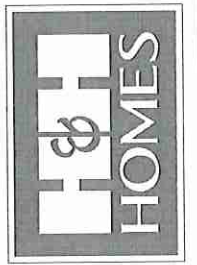
UPPER AREA VENTING

RIDGE VENT	SIZE:	PER UNIT:	# UNITS:	PROVIDED:
	-	.125 SF/LF	82'-0"	10.25
UPPER AREA VENTING PROVIDED:				-

TOTAL AREA PROVIDED

SOFFIT AND RIDGE VENT	13.489
-----------------------	--------

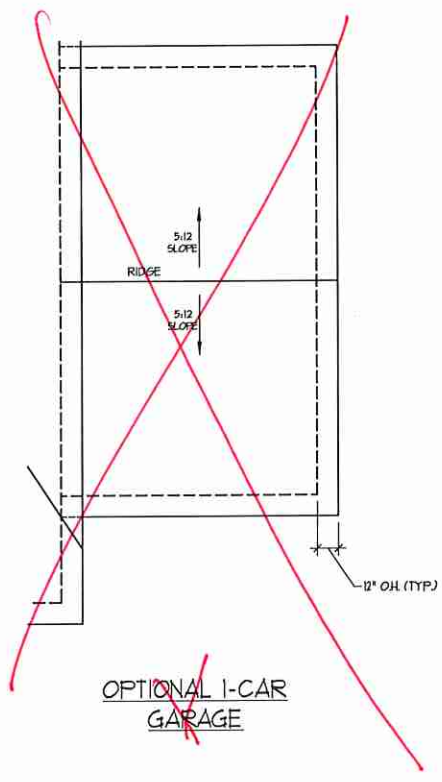
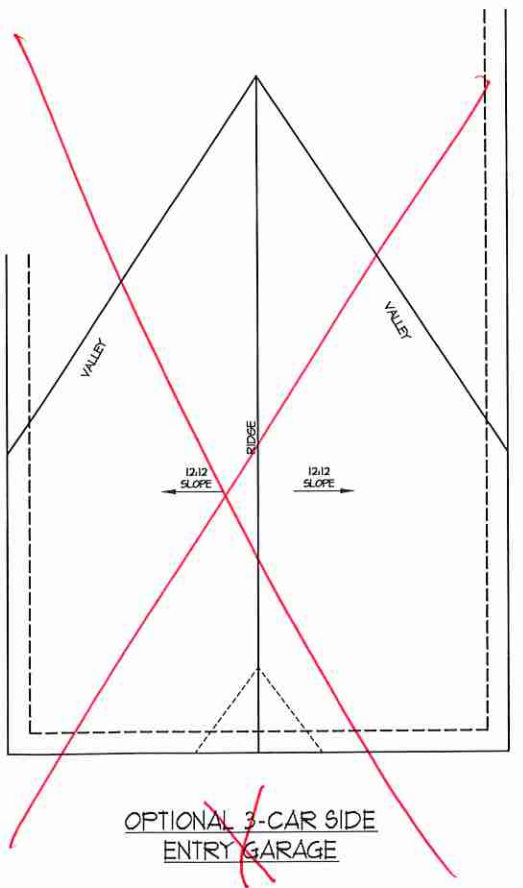
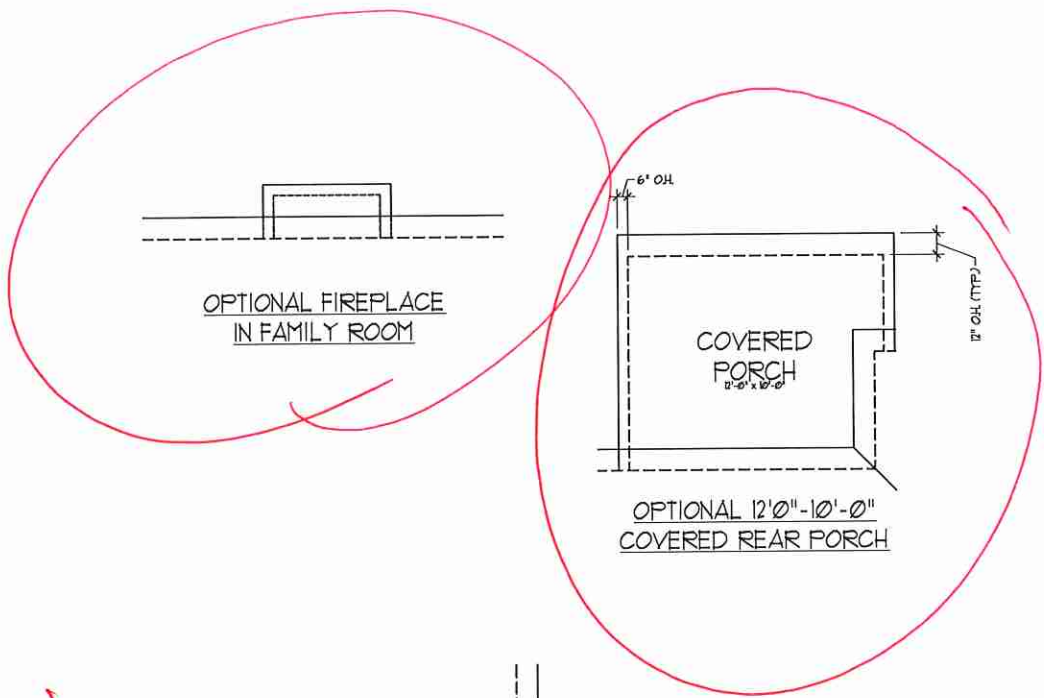
J.S. THOMPSON
 ENGINEERING, INC.
 800 WALKER AVE., SUITE 104
 RALEIGH, NC 27605
 PHONE: (919) 788-9919
 FAX: (919) 788-0921
 N.C. LICENSE NO. C-1733



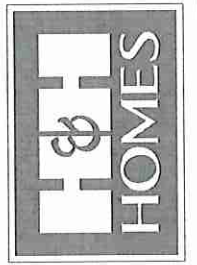
PRES. PROMOTIONS, INCENTIVES, FEATURES, OPTIONS, FLOOR PLANS, ELEVATIONS, DESIGNS, MATERIALS AND DIMENSIONS ARE SUBJECT TO CHANGE WITHOUT NOTICE AND MAY VARY IN ACTUAL CONSTRUCTION. ACTUAL POSITION OF HOUSE ON LOT WILL BE DETERMINED BY THE SITE PLAN AND PLOT PLAN. FLOOR PLANS AND ELEVATION DRAWINGS ARE ARTIST CONCEPTS AND NOT TO BE USED FOR REPRODUCTION, ADAPTATION, OR DISPLAY OF THE PLANS IS STRICTLY PROHIBITED. SEE NEW HOME SALES CONSULTANT FOR CURRENT DETAILS. COPYRIGHT © 2017 H&H HOMES

H&H HOMES, INC.
 ROOSEVELT

DATE: APRIL 26, 2017
 REV.: MAY 01, 2020
 SCALE: 1/4" = 1'-0"
 DRAWN BY:
 ENGINEERED BY:
 REVIEWED BY:



**J.S. THOMPSON
ENGINEERING, INC.**
100 WADE AVE., SUITE 104
KALEIGH, NC 27605
PHONE: (919) 286-0919
FAX: (919) 286-0921
N.C. LICENSE NO. C-1733

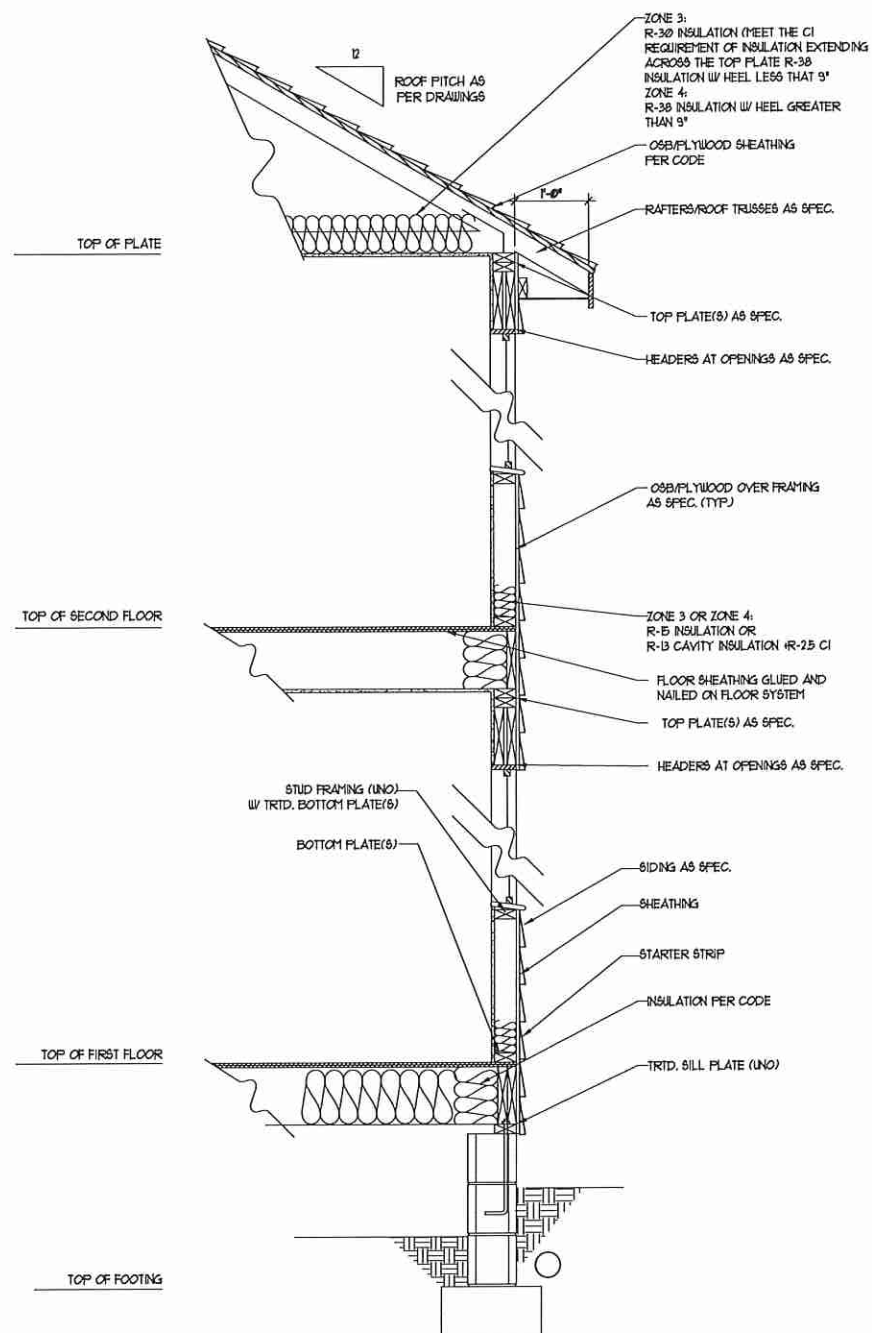


PRESS, PROMOTIONS, INCENTIVES, FEATURES, OPTIONS, FLOOR PLANS, ELEVATIONS, DESIGNS, MATERIALS AND DIMENSIONS ARE SUBJECT TO CHANGE WITHOUT NOTICE AND MAY VARY IN ACTUAL CONSTRUCTION. ACTUAL POSITION OF HOUSE ON LOT WILL BE DETERMINED BY THE SITE PLAN AND PLOT PLAN. FLOOR PLANS AND ELEVATION RENDERINGS ARE ARTIST CONCEPTS AND NOT TO BE USED FOR CONSTRUCTION, ADAPTATION, OR REPRODUCTION. PROPERTY OF H&H HOMES. ANY USE, REPRODUCTION, ADAPTATION, OR DISPLAY OF THE PLANS IS STRICTLY PROHIBITED. SEE NEW HOME SALES CONSULTANT FOR CURRENT DETAILS. COPYRIGHT © 2007 H&H HOMES

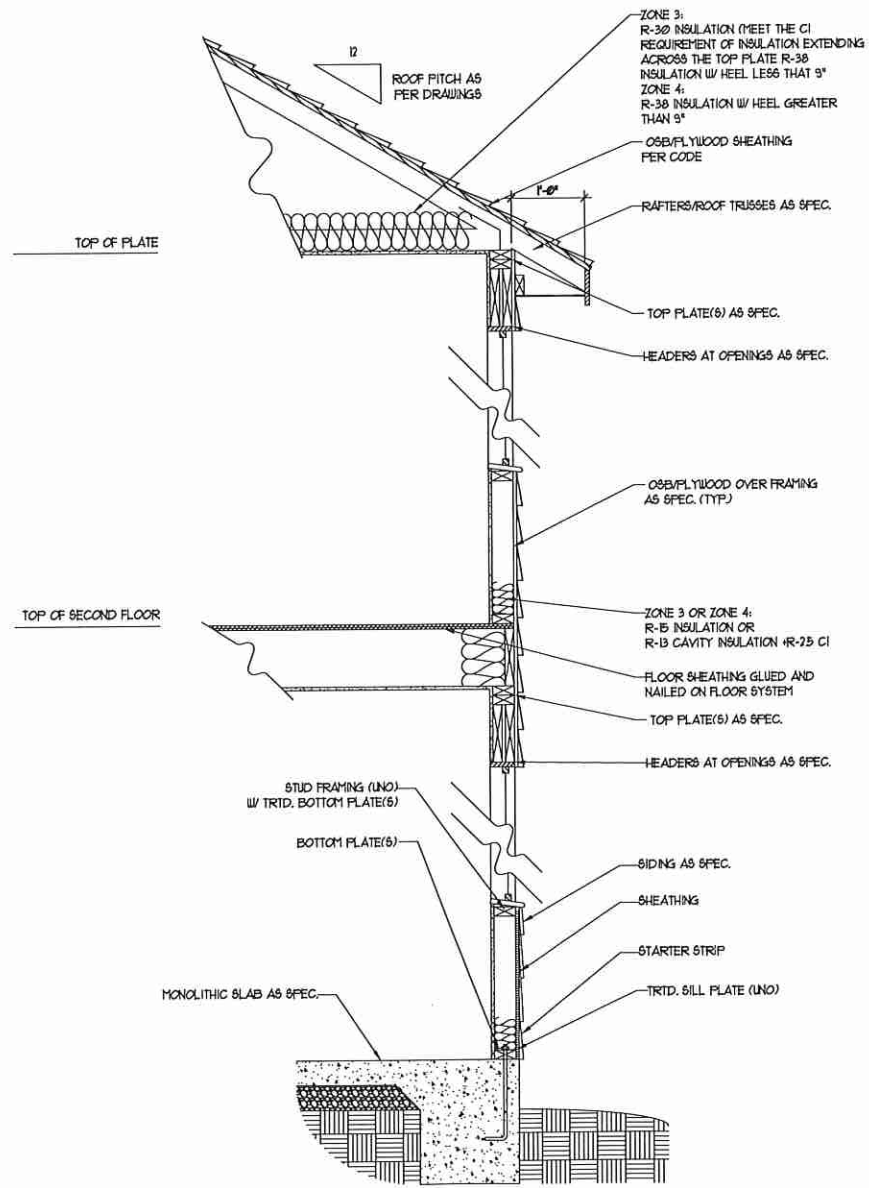
H&H HOMES, INC.
ROOSEVELT

DATE: APRIL 26, 2017
REV.: MAY 01, 2020
SCALE: 1/4" = 1'-0"
DRAWN BY:
ENGINEERED BY:
REVIEWED BY:

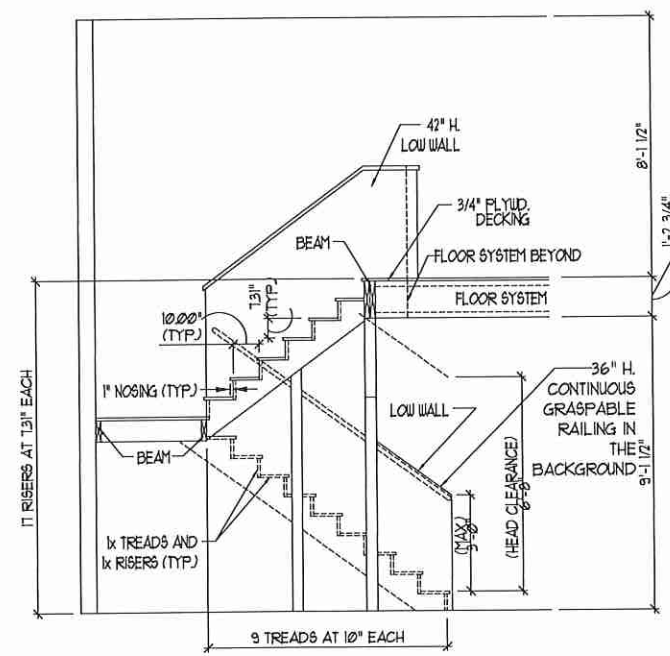
ROOF PLANS -
OPTIONS
A-8.2



WALL SECTION W/ CRAWL SPACE
W/ STD. SIDING SHOWN (NTS)



WALL SECTION W/ SLAB
W/ STD. SIDING SHOWN (NTS)



TYPICAL STAIR DETAIL
(NTS)

* * * * *

STAIR NOTES:

RAILING:

BALUSTERS SHALL BE SPACED SO THAT A 4" SPHERE CANNOT PASS THROUGH.

THE TRIANGULAR OPENINGS FORMED BY THE RISER, TREAD AND BOTTOM RAIL OF A GUARD AT THE OPEN SIDE OF A STAIRWAY ARE PERMITTED TO BE A SUCH A SIZE THAT A SPHERE OF 6 INCHES CANNOT PASS THROUGH.

OPENINGS FOR REQUIRED GUARDS ON THE SIDES OF STAIR TREADS SHALL NOT ALLOW A SPHERE 4 3/8 INCHES TO PASS THROUGH.

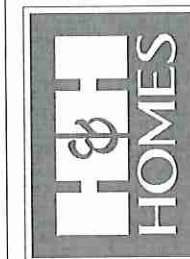
HANDRAILS:

HANDRAILS FOR STAIRWAYS SHALL BE CONTINUOUS FOR THE FULL LENGTH OF THE FLIGHT, FROM A POINT DIRECTLY ABOVE THE TOP RISER OF THE FLIGHT TO A POINT DIRECTLY ABOVE THE LOWEST RISER. HANDRAIL ENDS SHALL BE RETURNED OR SHALL TERMINATE IN NEEL POSTS OR SAFETY TERMINALS. HANDRAILS ADJACENT TO A WALL SHALL HAVE A SPACE OF NOT LESS THAN 1/2" INCH BETWEEN THE WALL AND HANDRAILS.

CONTINUOUS GRASPABLE HANDRAIL MUST MEET TYPE ONE OR TYPE TWO CRITERIA

* * * * *

J.S. THOMPSON
ENGINEERING, INC.
600 WALKER AVE., SUITE 104
RALEIGH, NC 27605
PHONE: (919) 788-9920
FAX: (919) 788-9921
N.C. LICENSE NO.: C-1733

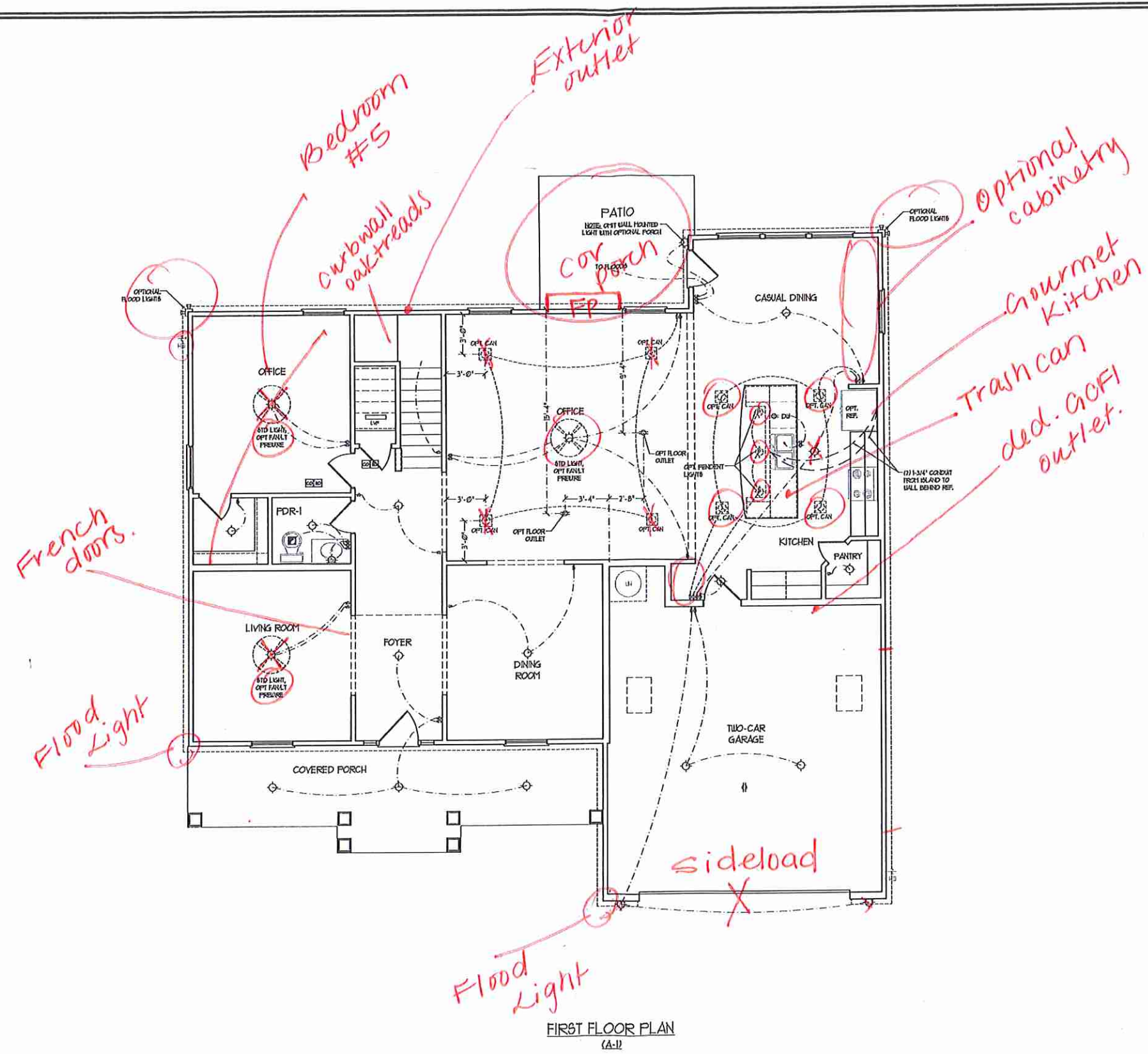


PREPARED FOR: INCENTIVES, FEATURES, OPTIONS, FLOOR PLANS, ELEVATIONS, DESIGNS, MATERIALS AND DIMENSIONS ARE SUBJECT TO CHANGE WITHOUT NOTICE. SQUARE FOOTAGE AND DIMENSIONS WILL BE DETERMINED BY THE SITE PLAN AND LOT PLAN. FLOOR PLANS AND ELEVATION DRAWINGS ARE ARTIST CONCEPTIONS AND NOT TO BE USED FOR CONSTRUCTION. ADAPTATION, OR DISPLAY OF THE PLANS IS STRICTLY PROHIBITED. SEE NEW HOME SALES CONSULTANT FOR CURRENT DETAILS. COPYRIGHT © 2000 H&H HOMES

H&H HOMES, INC.
ROOSEVELT

DATE: APRIL 26, 2017
REV.: MAY 01, 2020
SCALE: 1/4"=1'-0"
DRAWN BY:
ENGINEERED BY:
REVIEWED BY:

WALL SECTIONS
AND STAIR
DETAIL
AD-1



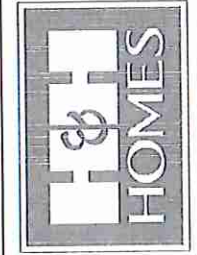
FIRST FLOOR PLAN
(A-1)

- ELECTRICAL LAYOUT NOTES:**
- 1) BLOCK AND USE FOR ALL CEILING FANS PER PLAN
 - 2) VANITY LIGHTS TO BE SET @ 30" AFF. (TYP)
 - 3) ADDITIONAL EXTERIOR OUTLETS REQUIRED BY CODE TO BE LOCATED BY ELECTRICIAN
 - 4) PLACE OUTLETS 6" FROM FRONT ROUGH OPENING.

ELECTRICAL LEGEND

	120 V OUTLET
	WALL MOUNT LIGHT
	CEILING MOUNT LIGHT
	PENDANT LIGHT
	RECESSED CAN LIGHT
	MINI CAN LIGHT
	EYEBALL LIGHT
	FLUORESCENT LIGHT
	2 LAYER, 4' FLUORESCENT LIGHT
	FLOOD LIGHT
	SWITCH
	3-WAY SWITCH
	4-WAY SWITCH
	DIMMER SWITCH
	CONDUIT FOR COMPONENT WIRING
	GFI BREAKER
	DOORBELL CHIME
	120 V SMOKE DETECTOR
	CO DETECTOR
	EXHAUST FAN
	LOW VOLTAGE PANEL
	CEILING FAN
	CEILING FAN w/ LIGHT

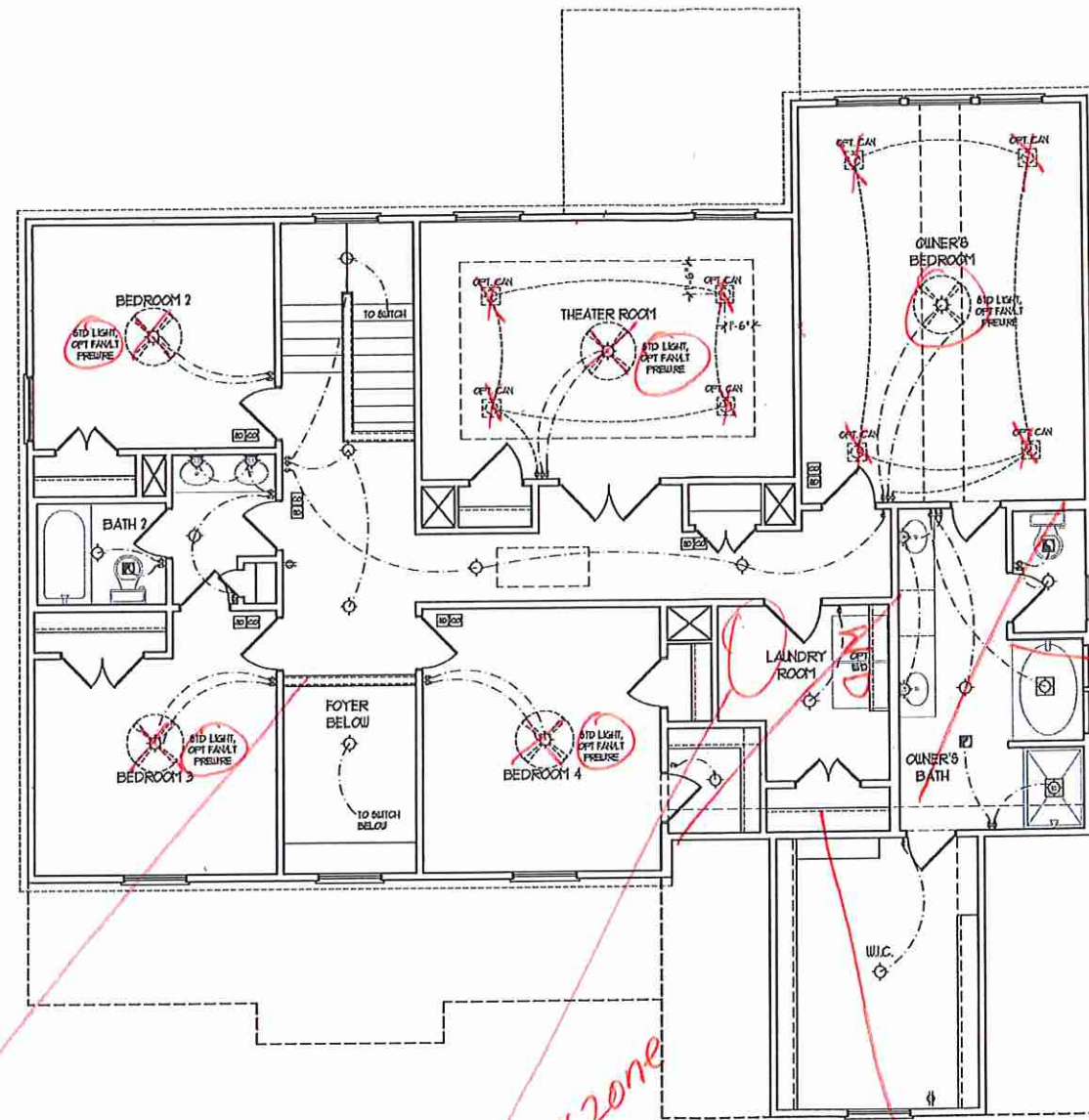
J.S. THOMPSON ENGINEERING, INC.
145 WARD AVE., SUITE 104
RALEIGH, NC 27605
PHONE: (919) 238-1939
FAX: (919) 238-9211
N.C. LICENSE NO. C-1733



PRICES, PROMOTIONS, INCENTIVES, FEATURES, OPTIONS, FLOOR PLANS, ELEVATIONS, DESIGN, MATERIALS, FINISHES, SCHEDULES, AND DIMENSIONS WITHOUT NOTICE. SQUARE FOOTAGE AND DIMENSIONS ARE ESTIMATED AND MAY VARY IN ACTUAL CONSTRUCTION. ACTUAL POSITION OF HOLES ON UTILITY WALLS, CEILING, FLOOR, AND WALLS ARE SHOWN ON FLOOR PLANS AND ELEVATION DRAWINGS ARE SHOWN ON CONCEPTS. FLOOR PLANS ARE THE COPYRIGHTED PROPERTY OF H&H HOMES. ANY USE, REPRODUCTION, OR MODIFICATION OF THIS DOCUMENT WITHOUT THE WRITTEN CONSENT OF H&H HOMES IS PROHIBITED. SEE H&H HOMES SALES CONSULTANT FOR CURRENT DETAILS. COPYRIGHT © 2020 H&H HOMES

H&H HOMES, INC.
ROOSEVELT

DATE: APRIL 26, 2017
REV.: MAY 01, 2020
SCALE: 1/4"=1'-0"
DRAWN BY:
ENGINEERED BY:
REVIEWED BY:
FIRST FLOOR ELECTRICAL PLAN
E-1



open rail wood pickets

work zone

owner's Bath #2

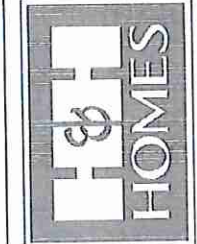
Bath #4

SECOND FLOOR PLAN

ELECTRICAL LAYOUT NOTES:
 1) BLOCK AND USE FOR ALL CEILING FANS PER PLAN
 2) VANTY LIGHTS TO BE SET @ 30" AFF. (TYP)
 3) ADDITIONAL EXTERIOR OUTLETS REQUIRED BY CODE TO BE LOCATED BY ELECTRICIAN
 4) PLACE SWITCHES 6" FROM FINISH ROUGH OPENING

ELECTRICAL LEGEND	
	80 V OUTLET
	WALL MOUNT LIGHT
	CEILING MOUNT LIGHT
	PENDANT LIGHT
	RECESSED CAN LIGHT
	MINI CAN LIGHT
	EYE BALL LIGHT
	FLUORESCENT LIGHT
	2 LAMP, 4' FLUORESCENT LIGHT
	FLOOD LIGHT
	SWITCH
	3-WAY SWITCH
	4-WAY SWITCH
	DIMMER SWITCH
	CONDUIT FOR COFFERED BEAMS
	SPEAKER
	DOORBELL CHIME
	80 V SHOCK DETECTOR
	CO DETECTOR
	EXHAUST FAN
	LOW VOLTAGE PANEL
	CEILING FAN
	CEILING FAN W/ LIGHT

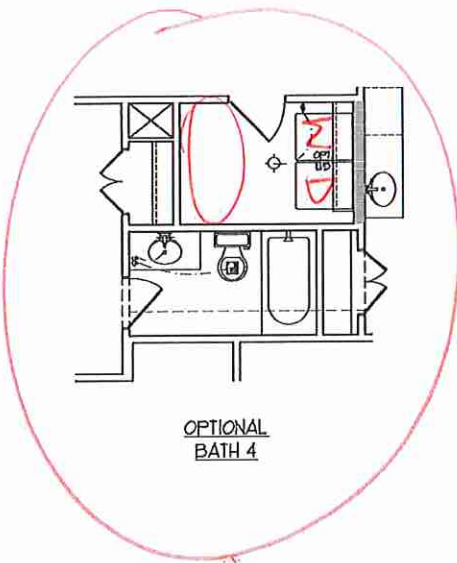
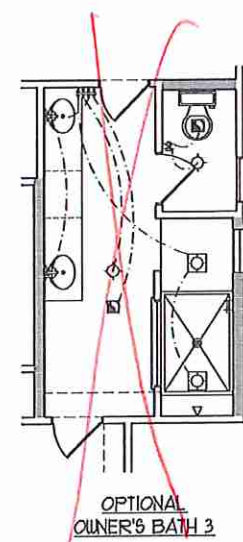
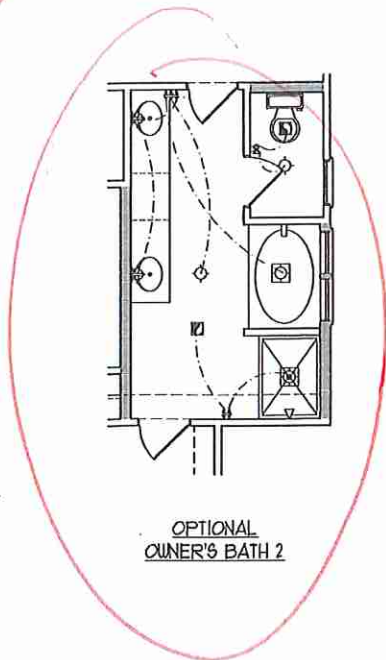
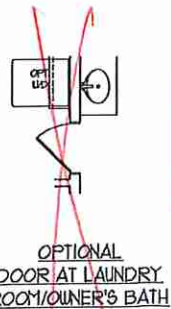
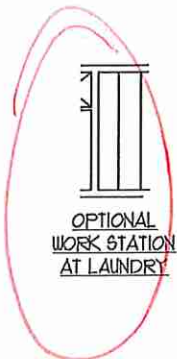
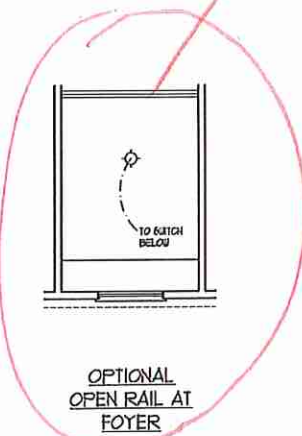
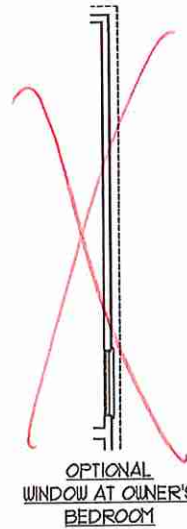
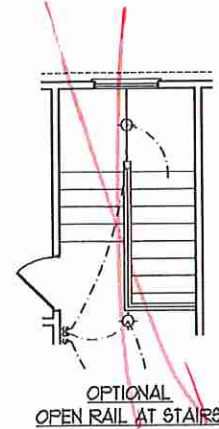
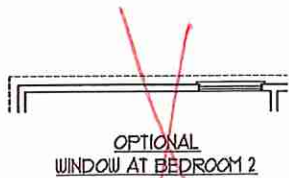
J.S. THOMPSON ENGINEERING, INC.
 65 WADE AVE., SUITE 104
 RALEIGH, NC 27605
 PHONE: (919) 286-9110
 FAX: (919) 781-9221
 N.C. LICENSE NO. C-1133



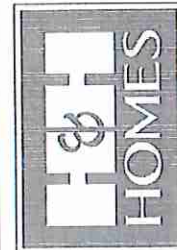
PERMITS, PROVISIONS, INCENTIVES, FEATURES, OPTIONS, FLOOR PLANS, ELEVATIONS, DESIGNS, MATERIALS AND DIMENSIONS ARE SUBJECT TO CHANGE WITHOUT NOTICE. CONTRACTORS SHALL VERIFY ALL DIMENSIONS AND MATERIALS WITH THE CONTRACTOR. CONSTRUCTION, ACTUAL POSITION OF HOUSE OR LOT WILL BE DETERMINED BY THE SITE PLAN AND FLOOR PLAN. FLOOR FINISHES, FLOOR PLANS ARE THE COPYRIGHTED PROPERTY OF H&H HOMES. ANY USE, REPRODUCTION, ADAPTATION OR DISPLAY OF THE PLANS IS STRICTLY PROHIBITED. SEE H&H HOMES FOR CURRENT DETAILS. COPYRIGHT © 2020 H&H HOMES

H&H HOMES, INC.
 ROOSEVELT

DATE: APRIL 26, 2017
 REV.: MAY 01, 2020
 SCALE: 1/4"=1'-0"
 DRAWN BY:
 ENGINEERED BY:
 REVIEWED BY:
 SECOND FLOOR ELECTRICAL PLAN
 E-2



J.S. THOMPSON ENGINEERING, INC.
 656 WADE AVE. SUITE 104
 RALEIGH, NC 27609
 PHONE: (919) 281-9919
 FAX: (919) 749-9211
 N.C. LICENSE NO. C-1133



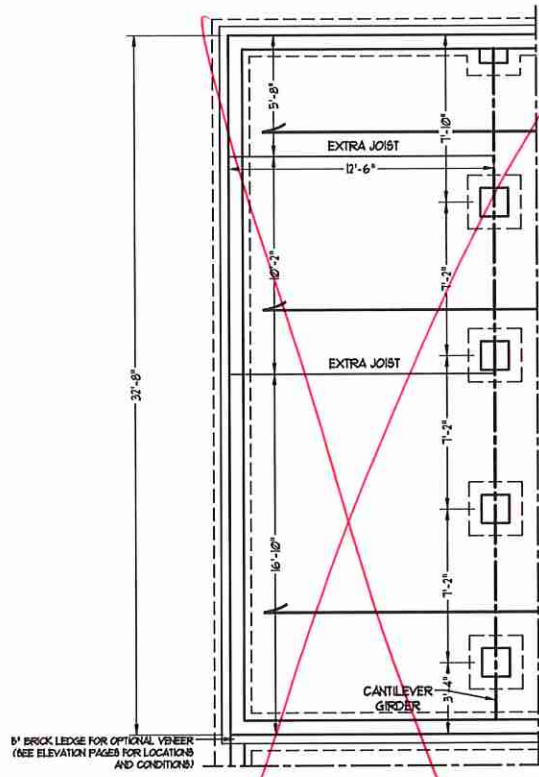
PRICES, PROMOTIONS, INCENTIVES, FEATURES, OPTIONS, FLOOR PLANS, ELEVATIONS, DESIGNS, MATERIALS, FINISHES, SCHEDULES AND DIMENSIONS WITHOUT NOTICE. SQUARE FOOTAGE AND DIMENSIONS ARE ESTIMATED AND MAY VARY IN ACTUAL CONSTRUCTION. ACTUAL POSITION OF HOUSE ON LOT IS NOT GUARANTEED. H&H HOMES, INC. IS THE PROPERTY OF H&H HOMES, INC. ANY USE, REPRODUCTION, OR DISTRIBUTION OF THIS INFORMATION IS PROHIBITED. SEE NEW HOME SALES CONSULTANT FOR CURRENT DETAILS. COPYRIGHT © 2020 H&H HOMES.

H&H HOMES, INC.
 ROOSEVELT

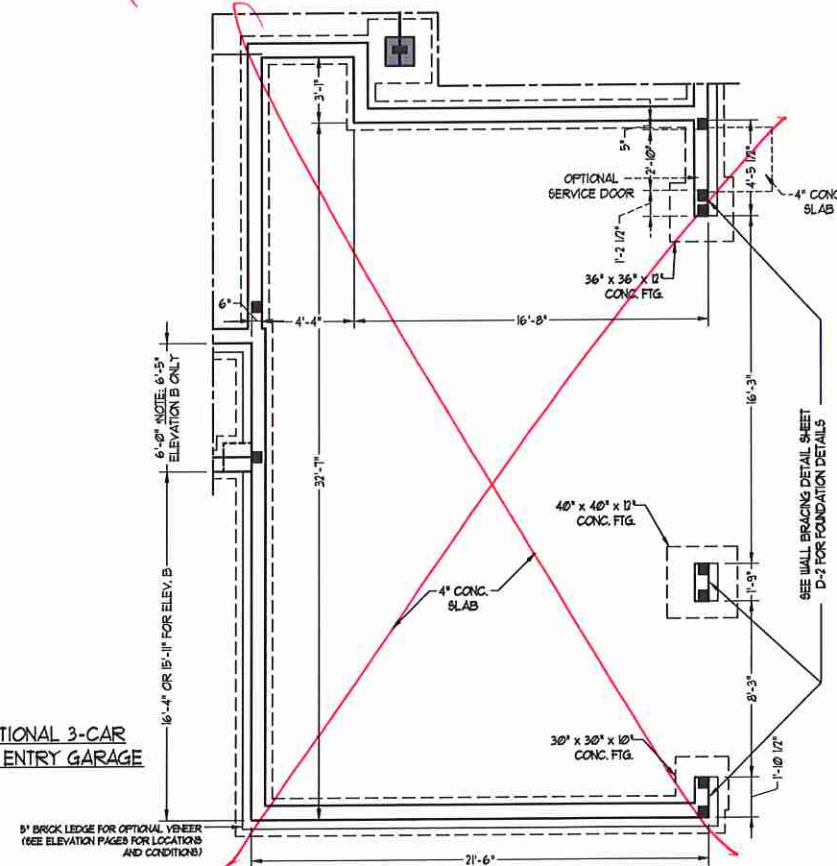
DATE: APRIL 26, 2017
 REV.: MAY 01, 2020
 SCALE: 1/4"=1'-0"
 DRAWN BY:
 ENGINEERED BY:
 REVIEWED BY:
 SECOND FLOOR ELECTRICAL PLAN - OPTIONS

E-2.1

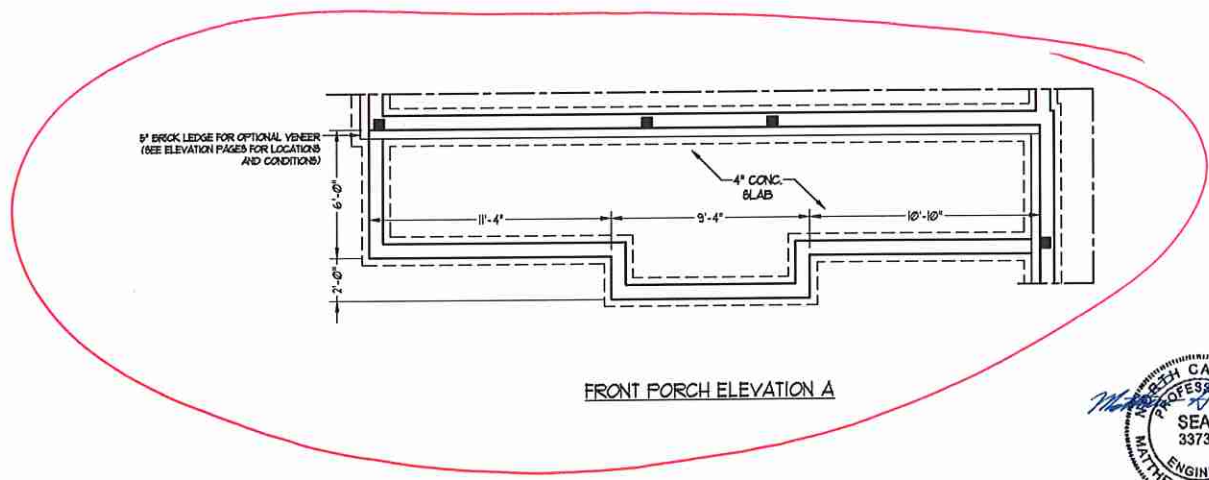
Log AIL



OPTIONAL GUEST SUITE I/O
LIVING ROOM & OFFICE



OPTIONAL 3-CAR
SIDE ENTRY GARAGE



FRONT PORCH ELEVATION A



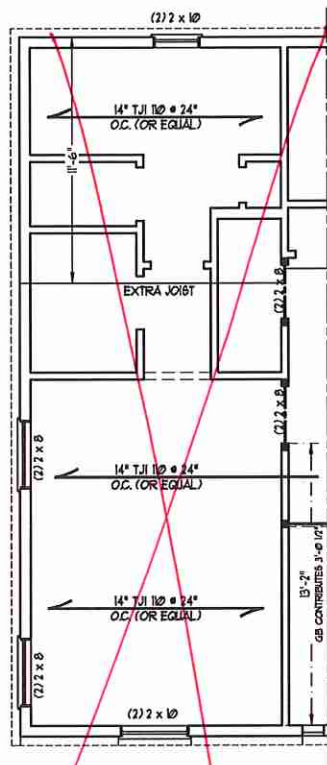
**J.S. THOMPSON
ENGINEERING, INC.**
606 WADE AVE., SUITE 104 RALEIGH, NC 27605
PHONE: (919) 789-9919 FAX: (919) 789-9921
N.C. LICENSE NO.: C-1733

ROOSEVELT
H&H HOMES, INC.

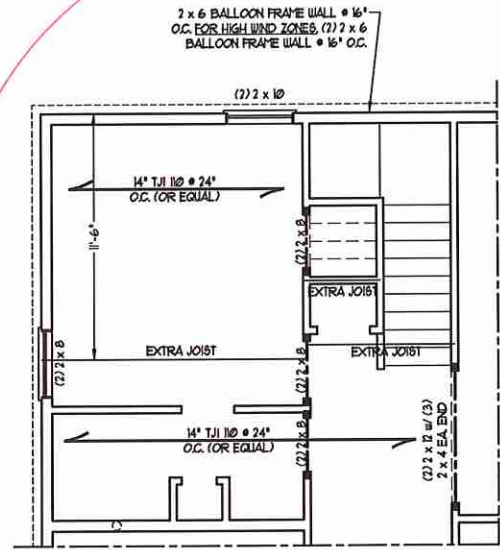
DATE: AUGUST 27, 2020
SCALE: 1/4" = 1'-0"
DRAWN BY: H&H HOMES
ENGINEERED BY: WTB

SHEET 2 OF 12
S-1.1b
CRAWL
FOUNDATION PLAN

8/27/2020



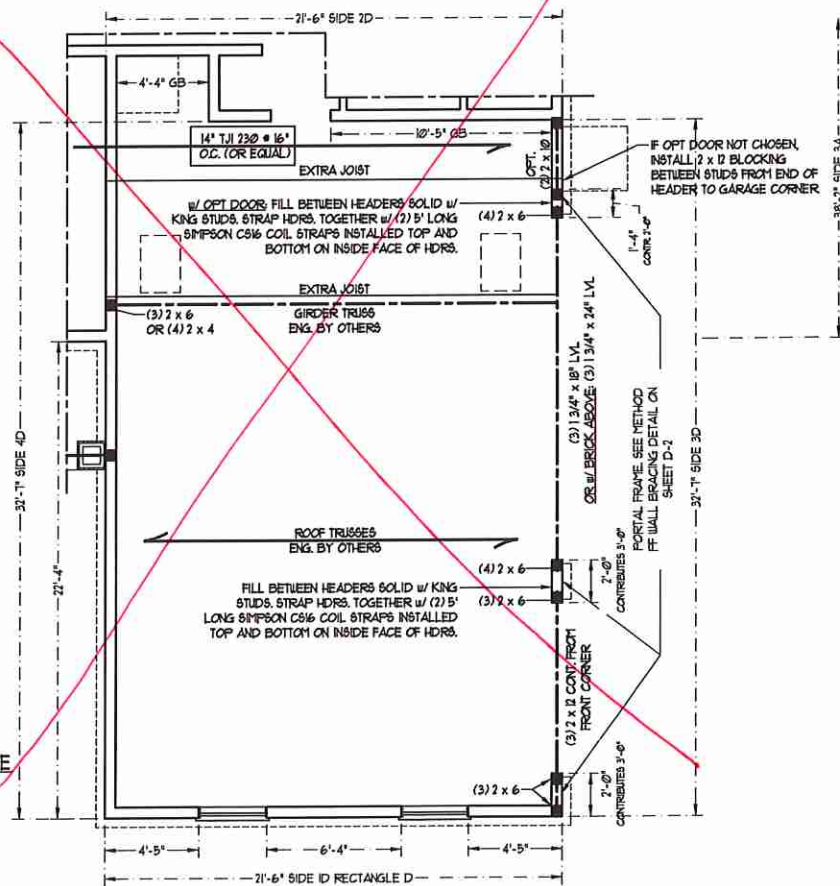
OPTIONAL GUEST SUITE ILO
LIVING ROOM & OFFICE



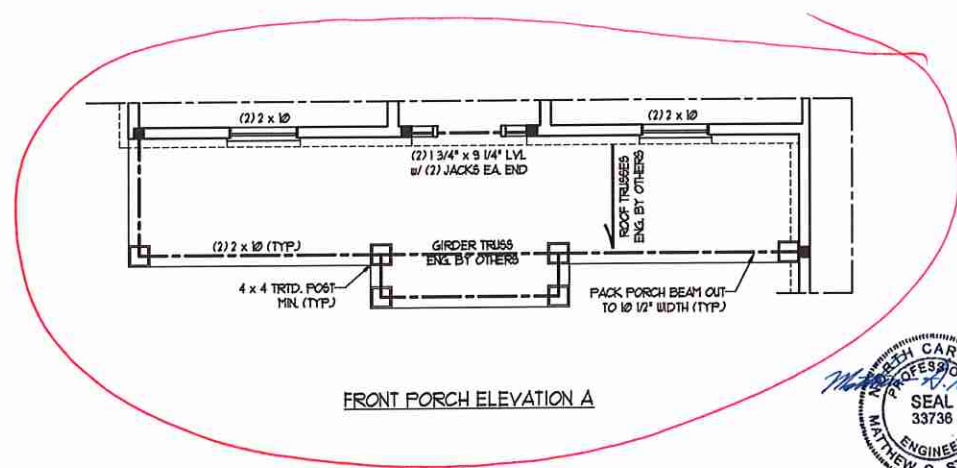
BEDROOM 5 & BATH 3 ILO
OFFICE & POWDER ROOM
(NOT AVAILABLE w/ OPT. BASEMENT)

BRACED WALL DESIGN
RECTANGLE D

SIDE 1D	METHOD: C5-WSP	TOTAL REQUIRED LENGTH: 4.06'	TOTAL PROVIDED LENGTH: 15.2'
SIDE 2D / 1A COMBINED	METHOD: C5-WSP/GB	TOTAL REQUIRED LENGTH: 11.84'	TOTAL PROVIDED LENGTH: 21.1'
SIDE 3D	METHOD: C5-WSP/FF	TOTAL REQUIRED LENGTH: 2.52'	TOTAL PROVIDED LENGTH: 8.0'
SIDE 4D	METHOD: C5-WSP	TOTAL REQUIRED LENGTH: 2.52'	TOTAL PROVIDED LENGTH: 22.3'



OPTIONAL 3-CAR
SIDE ENTRY GARAGE



FRONT PORCH ELEVATION A



**J.S. THOMPSON
ENGINEERING, INC.**
606 WADE AVE., SUITE 104 RALEIGH, NC 27605
PHONE: (919) 789-9919 FAX: (919) 789-9921
N.C. LICENSE NO.: C-1753

ROOSEVELT
H&H HOMES, INC.

DATE: AUGUST 27, 2020
SCALE: 1/4" = 1'-0"
DRAWN BY: H&H HOMES
ENGINEERED BY: WTB

SHEET 10 OF 12
S-2b
SECOND FLOOR
FRAMING PLAN

NOTE: ALL EXTERIOR WALLS AND ATTIC WALLS ARE TO BE 2 x 6 @ 16" O.C. (UNO). 2 x 4 @ 16" O.C. EXTERIOR WALLS MAY BE CONSTRUCTED IN LIEU OF 2 x 6 WALLS (UNO). ALL INTERIOR LOAD BEARING WALLS ARE TO BE 2 x 4 @ 16" O.C. (UNO) AND NON-LOAD BEARING INTERIOR WALLS ARE TO BE 2 x 4 @ 24" O.C. (UNO).

LINTEL SCHEDULE FOR BRICK/NATURAL STONE SUPPORT

LENGTH (FT.)	SIZE OF LINTEL
UP TO 4 FT.	L 3 1/2 x 3 1/2 x 1/4
4-8	L 5 x 3 1/2 x 5/16 LLV
8 AND GREATER	L 6 x 4 x 5/16 LLV

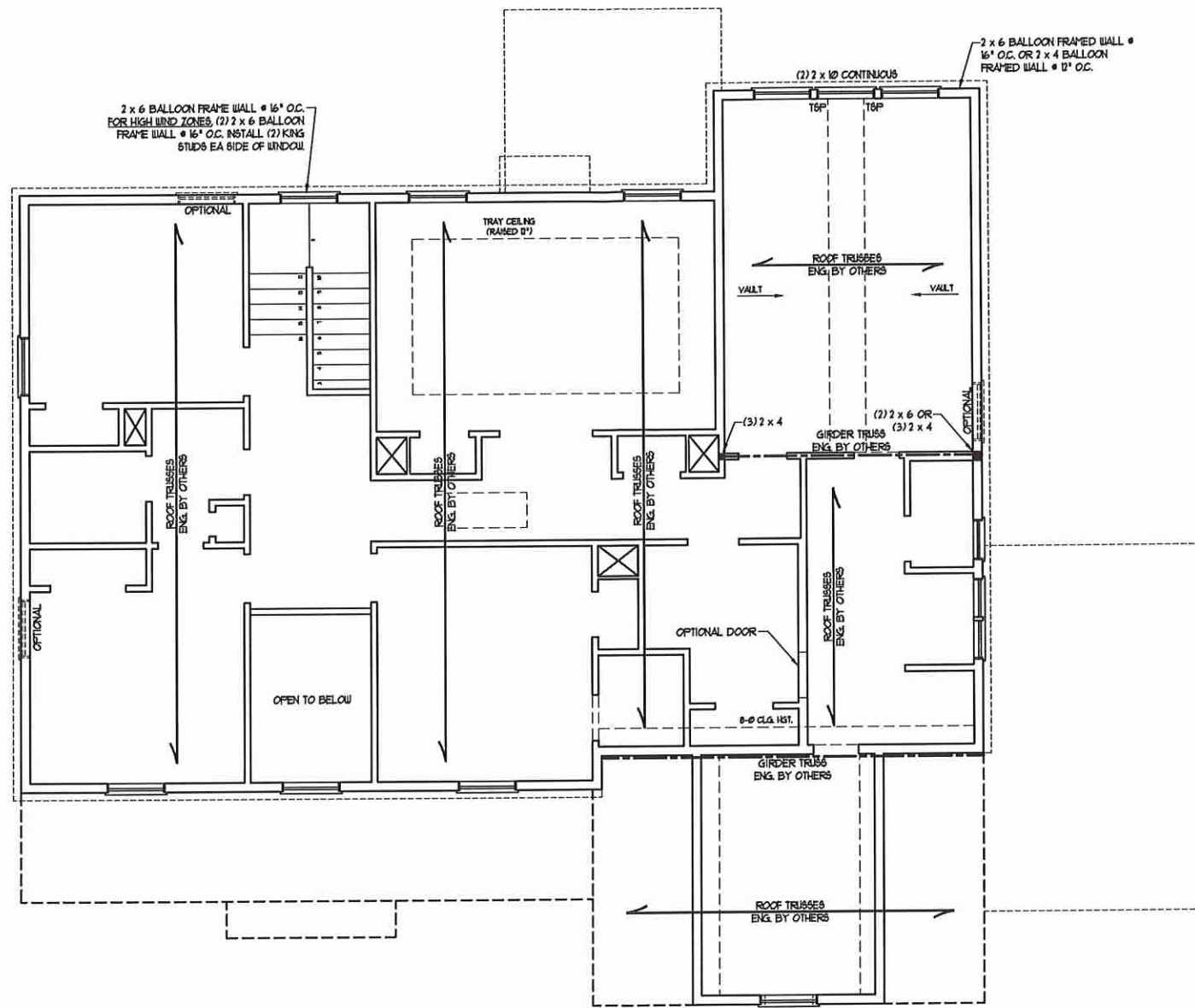
- BRICK SUPPORT NOTES:**
- LINTEL SCHEDULE APPLIES TO ALL OPENINGS IN BRICK VENEER (UNO). SEE ARCH DETAILS FOR SIZE AND LOCATION OF OPENINGS.
 - (LLV) = LONG LEG VERTICAL
 - LENGTH = CLEAR OPENING
 - EMBED ALL ANGLE IRONS MIN. 4" EACH SIDE INTO VENEER TO PROVIDE BEARING.
 - FOR ALL HEADERS 8"-8" AND GREATER IN LENGTH, ATTACH STEEL ANGLE TO HEADER W/ 1/2" LAG SCREWS @ 12" O.C. STAGGERED.
 - FOR ALL BRICK SUPPORT @ ROOF LINES, FASTEN (2) 2 x 10 BLOCKING BETWEEN STUDS W/ (4) 1/2" D NAILS PER PLY. FASTEN A 6" x 4" x 5/16" STEEL ANGLE TO (2) 2 x 10 BLOCKING W/ (2) 1/2" LAG SCREWS @ 12" O.C. STAGGERED. SEE SECTION R103.822 OF THE 2018 NRC FOR ADDITIONAL BRICK SUPPORT INFORMATION.
 - PRECAST REINFORCED CONCRETE LINTELS ENGINEERED BY OTHERS MAY BE USED IN LIEU OF STEEL LINTELS.

- STRUCTURAL NOTES:**
- ALL FRAMING LUMBER TO BE 6PF #1 (UNO).
 - ALL TREATED LUMBER TO BE 5YP #1 (UNO).
 - ALL LOAD BEARING HEADERS TO BE (2) 2 x 6 (UNO).
 - WINDOW AND DOOR HEADERS TO BE SUPPORTED W/ (1) JACK STUD AND (1) KING STUD EA. END (UNO). SEE TABLE R602.15 FOR ADDITIONAL KING STUD REQUIREMENTS.
 - SQUARES DENOTE POINT LOADS WHICH REQUIRE SOLID BLOCKING TO GIRDER OR FOUNDATION. ALL SQUARES TO BE (2) STUDS (UNO).
 - FOR HIGH WIND ZONES, ALL EXTERIOR WALLS TO BE SHEATHED WITH 1/2" OSB SHEATHING WITH JOINTS BLOCKED AND SECURED WITH 8d NAILS AT 3" O.C. ALONG EDGES AND 6" O.C. IN THE FIELD.
 - FOR HIGH WIND ZONES, SECURE ALL EXTERIOR WALL SHEATHING PANELS TO DOUBLE TOP PLATES, BANDS, JOISTS, AND GIRDERS WITH (2) ROWS OF 8d NAILS STAGGERED AT 3" O.C. PANELS SHALL EXTEND 1" BEYOND CONSTRUCTION JOINTS AND SHALL OVERLAP GIRDERS AND DOUBLE BIL PLATES THEIR FULL DEPTH.
 - SUPPORT GABLE WALLS NOT BRACED BY CEILING JOISTS OR FLOOR SYSTEM WITH 2 x 4 LATERAL BRACING INSTALLED ON TOP OF CEILING JOISTS OR TRUSS BOTTOM CHORDS AT 8'-0" O.C. AND EXTEND INWARD FROM GABLE WALLS 8'-0" MIN.
 - REFER TO NOTES AND DETAIL SHEETS FOR ADDITIONAL STRUCTURAL INFORMATION.

T&P - TRIPLE STUD POCKET

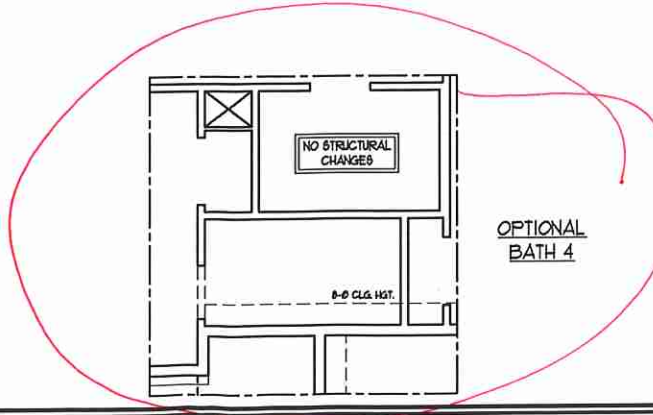
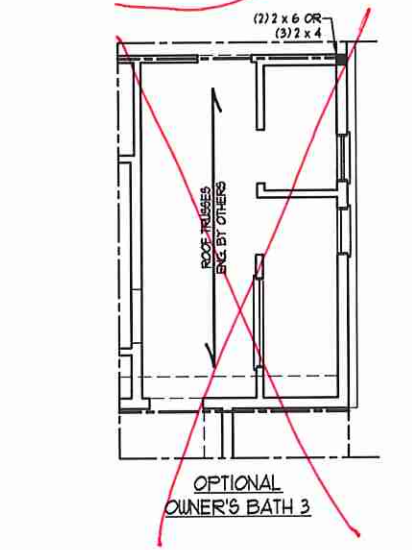
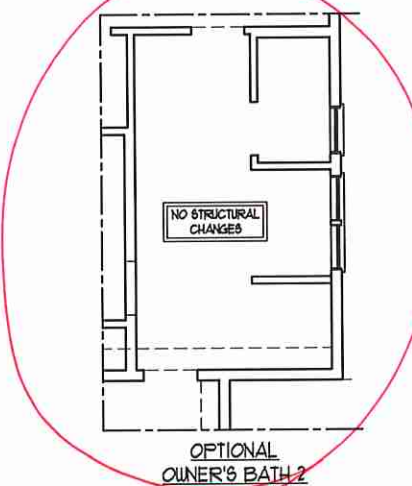
**TABLE R602.15
MINIMUM NUMBER OF FULL HEIGHT STUDS AT EACH END OF HEADERS IN EXTERIOR WALLS**

HEADER SPAN (FEET)	MAXIMUM STUD SPACING (INCHES) (PER TABLE R602.15)	
	16	24
UP TO 3'	1	1
4'	2	1
8'	3	2
12'	5	3
16'	6	4



- BRACED WALL DESIGN NOTES:**
- BRACED WALL DESIGN PER SECTION R607.10 OF THE NRC 2018 EDITION.
 - CS-WSP REFERS TO 'CONTINUOUS SHEATHING - WOOD STRUCTURAL PANELS'. CONTRACTOR IS TO INSTALL 1/2" OSB ON ALL EXTERIOR WALLS ATTACHED W/ 8d NAILS SPACED 6" O.C. ALONG PANEL EDGES AND 12" O.C. IN THE FIELD.
 - GB REFERS TO 'GYPSUM BOARD'. CONTRACTOR IS TO INSTALL 1/2" (MIN) GYPSUM WALL BOARD WHERE NOTED ON THE PLANS. FASTEN GB WITH 1/4" SCREWS OR 1 5/8" NAILS SPACED 1" O.C. ALONG PANEL EDGES AND IN THE FIELD INCLUDING TOP AND BOTTOM FLATES.
 - BRACED WALL DESIGN APPLIED IN WIND ZONES UP TO 130 MPH. FOR HIGH WIND ZONES, BRACE WALLS ARE TO BE CONSTRUCTED IN ACCORDANCE WITH CHAPTER 45 OF THE NRC 2018 EDITION. SEE NOTES AND DETAIL SHEETS FOR ADDITIONAL BRACED WALL INFORMATION.

- NOTE:**
- PER SECTION R602.132 OF THE 2018 NRC, THE AMOUNT OF BRACING ON THE SECOND FLOOR EXCEEDS THE AMOUNT REQUIRED FOR THE FIRST FLOOR AND NO BRACED WALL ANALYSIS IS REQUIRED.
 - SHEATH ALL EXTERIOR WALLS WITH 1/2" OSB SHEATHING ATTACHED WITH 8d NAILS AT 6" O.C. ALONG PANEL EDGES AND 12" O.C. IN THE FIELD.



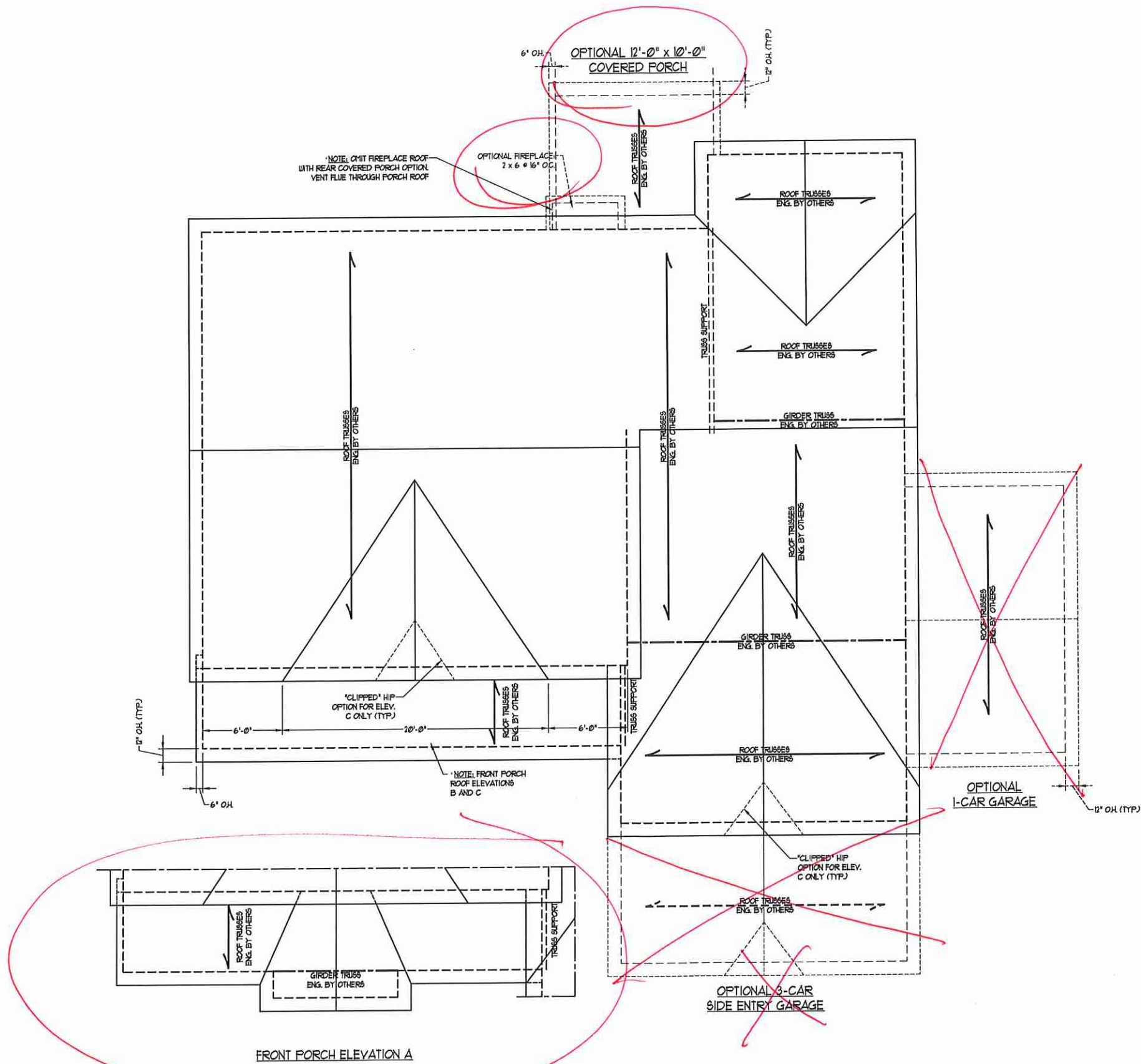
**J.S. THOMPSON
ENGINEERING, INC.**
606 WADE AVE., SUITE 104 RALEIGH, NC 27605
PHONE: (919) 789-9919 FAX: (919) 789-9921
N.C. LICENSE NO. C-1733

ROOSEVELT
H&H HOMES, INC.

DATE: AUGUST 21, 2020
SCALE: 1/4" = 1'-0"
DRAWN BY: H&H HOMES
ENGINEERED BY: WTB



SHEET 11 OF 12
S-3
ATTIC FLOOR FRAMING PLAN



BRICK SUPPORT NOTE:

1. FASTEN (2) 2 x 10 BLOCKING BETWEEN WALL STUDS w/ (4) 1d NAILS PER PLY. FASTEN A 6" x 4" x 5/16" STEEL ANGLE TO (2) 2 x 10 BLOCKING w/ (2) 1/2" LAG SCREWS @ 12" O.C. STAGGERED. SEE SECTION R103.B21 OF THE 2018 NRC FOR ADDITIONAL BRICK SUPPORT INFORMATION.
2. WHERE ROOF SLOPES EXCEED 1:12, INSTALL 3" x 3" x 1/4" STEEL PLATE STOPS AT 24" O.C. PER SECTION R103.B21 OF THE NORTH CAROLINA RESIDENTIAL CODE, 2018 EDITION.

STRUCTURAL NOTES:

1. ALL FRAMING LUMBER TO BE #2 SFF (NOI).
2. CIRCLES DENOTE (3) 2 x 4 POSTS FOR ROOF SUPPORT.
3. FRAME DORMER WALLS ON TOP OF DOUBLE OR TRIPLE RAFTERS.
4. HIP SPLICES ARE TO BE SPACED A MIN. OF 8'-0". FASTEN MEMBERS WITH THREE ROWS OF 12d NAILS @ 16" O.C. (TYP.)
5. STICK FRAME OVER-FRAMED ROOF SECTIONS w/ 2 x 8 RIDGES, 2 x 6 RAFTERS @ 16" O.C. AND FLAT 2 x 10 VALLEYS OR USE VALLEY TRUSSES.
6. FASTEN FLAT VALLEYS TO RAFTERS OR TRUSSES WITH SIMPSON H15A HURRICANE TIES @ 32" O.C. MAX. PASS HURRICANE TIES THROUGH NOTCH IN ROOF SHEATHING. EACH RAFTER IS TO BE FASTENED TO THE FLAT VALLEY WITH A MIN. OF (6) 12d TOE NAILS.
7. REFER TO SECTION R807.1 OF THE 2018 NRC FOR REQUIRED UPLIFT RESISTANCE AT RAFTERS AND TRUSSES.
8. REFER TO NOTES AND DETAIL SHEETS FOR ADDITIONAL STRUCTURAL INFORMATION.

J.S. THOMPSON ENGINEERING, INC.
 606 WADE AVE., SUITE 104 RALEIGH, NC 27605
 PHONE: (919) 789-9919 FAX: (919) 789-9921
 N.C. LICENSE NO.: C173

ROOSEVELT
 H&H HOMES, INC.

DATE: AUGUST 27, 2020
 SCALE: 1/4" = 1'-0"
 DRAWN BY: H&H HOMES
 ENGINEERED BY: WFB

SEAL
 33738
 ENGINEER
 MATTHEW G. STROTHER

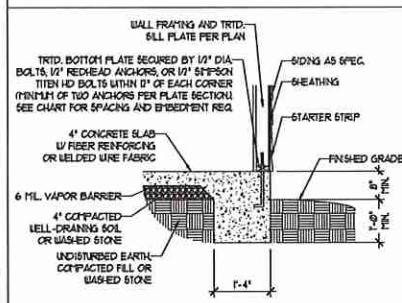
8/27/2020

DATE: AUGUST 27, 2020
 SCALE: 1/4" = 1'-0"
 DRAWN BY: H&H HOMES
 ENGINEERED BY: WFB

SHEET 12 OF 12
 S4
 ROOF FRAMING PLAN

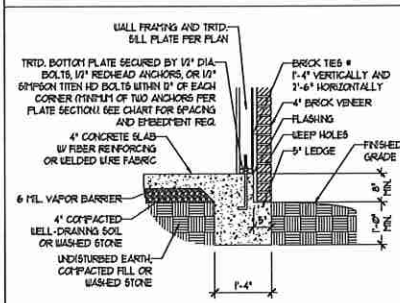
MONOLITHIC SLAB DETAILS

DETAIL 1



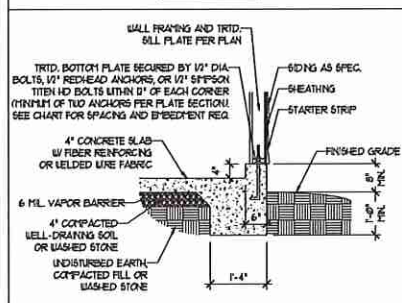
TYPICAL SLAB DETAIL

DETAIL 2



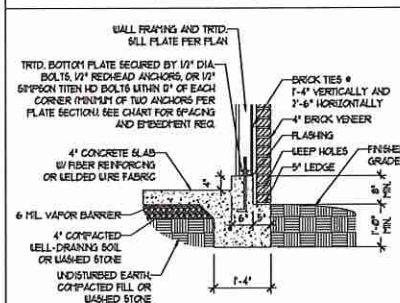
BRICK VENEER DETAIL

DETAIL 3



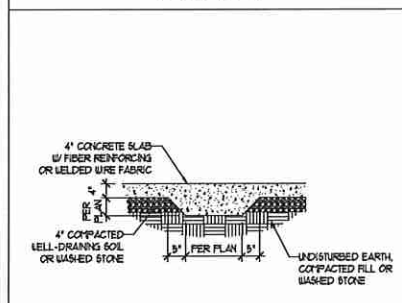
GARAGE CURB DETAIL

DETAIL 4



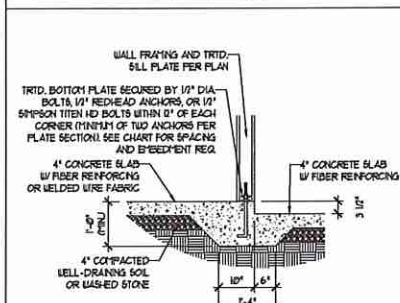
GARAGE CURB BRICK LEDGE DETAIL

DETAIL 5



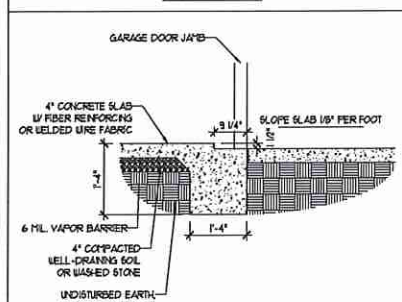
THICKENED SLAB DETAIL

DETAIL 6



STEP IN GARAGE DETAIL

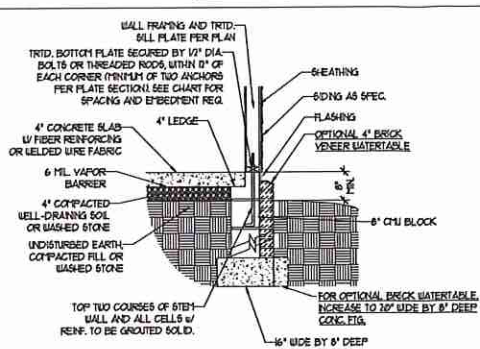
DETAIL 7



SLAB AT GARAGE DOOR DETAIL

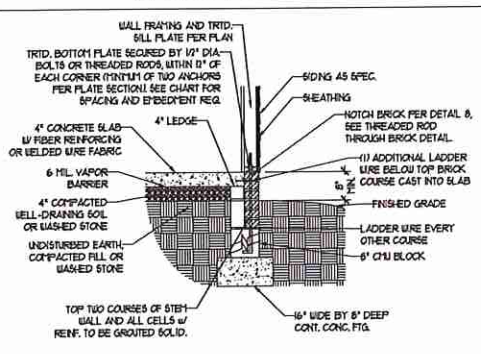
STEMWALL DETAILS

DETAIL 1



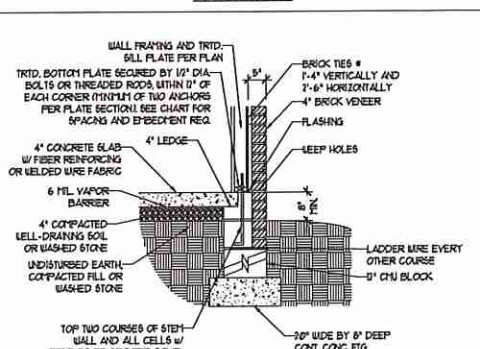
TYPICAL STEM WALL DETAIL
(w/ OPTIONAL WATERTABLE)

OPTIONAL DETAIL 1



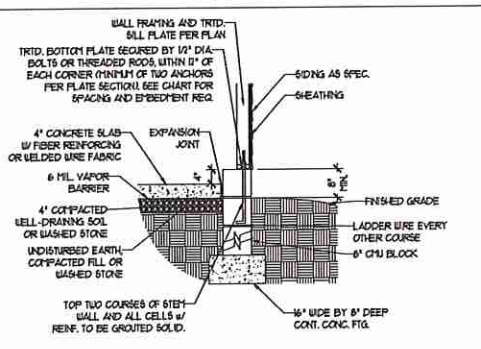
OPTIONAL STEM WALL DETAIL

DETAIL 2



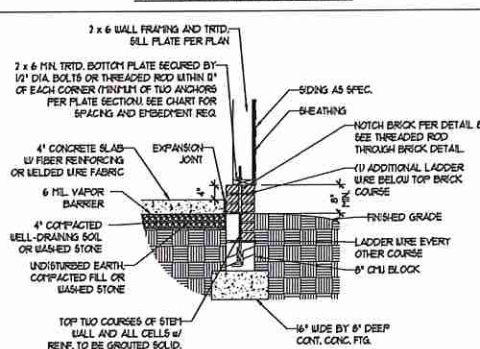
TYPICAL STEM WALL FND. w/ BRICK DETAIL

DETAIL 3



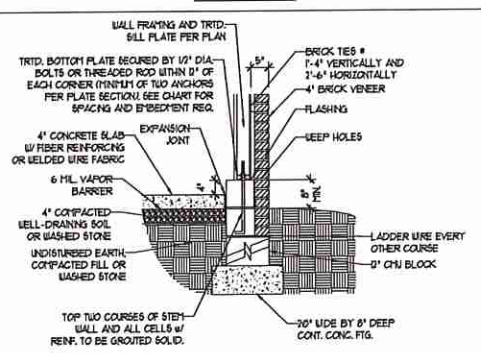
TYPICAL STEM WALL FND. DETAIL w/ CURB @ GARAGE

OPTIONAL DETAIL 3



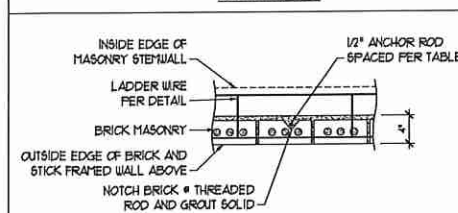
OPTIONAL STEM WALL FND. DETAIL w/ CURB @ GARAGE

DETAIL 4



TYPICAL STEM WALL FND. DETAIL w/ BRICK AND CURB @ GARAGE

DETAIL 8



THREADED ROD THROUGH BRICK MASONRY

MASONRY STEMWALL SPECIFICATIONS

WALL HEIGHT (FEET)	MASONRY WALL TYPE			
	8" CMU	4" BRICK AND 4" CMU	4" BRICK AND 8" CMU	12" CMU
2 AND BELOW	UNGROUTED	GROUT SOLID	UNGROUTED	UNGROUTED
3	UNGROUTED	GROUT SOLID	UNGROUTED	UNGROUTED
4	GROUT SOLID	GROUT SOLID w/ 1/4 REBAR @ 48" O.C.	GROUT SOLID	GROUT SOLID w/ 1/4 REBAR @ 64" O.C.
5	GROUT SOLID w/ 1/4 REBAR @ 36" O.C.	NOT APPLICABLE	GROUT SOLID w/ 1/4 REBAR @ 36" O.C.	GROUT SOLID w/ 1/4 REBAR @ 64" O.C.
6	GROUT SOLID w/ 1/4 REBAR @ 24" O.C.	NOT APPLICABLE	GROUT SOLID w/ 1/4 REBAR @ 24" O.C.	GROUT SOLID w/ 1/4 REBAR @ 64" O.C.
7 AND GREATER	ENGINEERED DESIGN BASED ON SITE CONDITIONS			

STRUCTURAL NOTES:

- WALL HEIGHT MEASURED FROM TOP OF FOOTING TO TOP OF THE WALL.
- TIE MULTIPLE WYTHES TOGETHER WITH LADDER WIRE AT 16" O.C. VERTICALLY.
- CHART APPLICABLE FOR HOUSE FOUNDATION ONLY. CONSULT ENGINEER FOR DESIGN OF GARAGE FOUNDATION NOT COMMON TO HOUSE.
- BACKFILL OF CLEAN #5 1/2 WASHED STONE IS ALLOWABLE.
- CLASSIFIED AS GROUP 1 ACCORDING TO UNIFIED SOILS CLASSIFICATION SYSTEM IN ACCORDANCE WITH TABLE B402.1 OF THE 2018 INTERNATIONAL RESIDENTIAL CODE ARE ALLOWABLE.
- PREP SLAB PER RS206.21 AND RS206.22 BASE OF THE 2018 INTERNATIONAL RESIDENTIAL CODE. MINIMUM 24" LAP SPLICE LENGTH.
- LOCATE REBAR IN CENTER OF FOUNDATION WALL.
- WHERE REQUIRED, FILL BLOCK SOLID WITH TYPE "S" MORTAR OR 3000 PSI GROUT. USE OF "LOW LIFT GROUTING" METHOD REQUIRED WHEN FILLING WALLS WITH GROUT AT HEIGHTS OF 5' AND GREATER.

ANCHOR SPACING AND EMBEDMENT

WIND ZONE	120 MPH	130 MPH
SPACING	6'-0" O.C.	4'-0" O.C.
EMBEDMENT	1"	5" INTO MASONRY 1" INTO CONCRETE

J.S. THOMPSON ENGINEERING, INC.
606 WADE AVE., SUITE 104 RALEIGH, NC 27605
PHONE: (919) 789-9919 FAX: (919) 789-9921
N.C. LICENSE NO.: C1733

120 MPH - 130 MPH ULTIMATE DESIGN WIND SPEED
FOUNDATION DETAILS

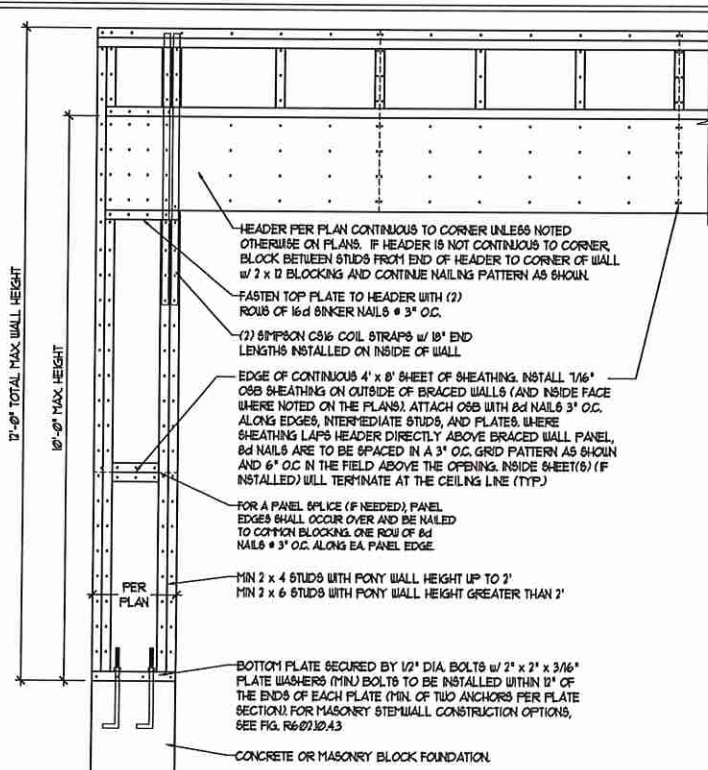
DATE: NOVEMBER 14, 2018
SCALE: NTS
DRAWN BY: JST
ENGINEERED BY: JES



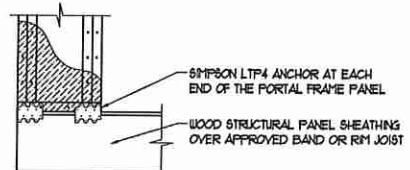
D-1
FOUNDATION DETAILS

GENERAL WALL BRACING NOTES:

1. WALL BRACING DESIGNED IN ACCORDANCE WITH CHAPTER 6 OF THE 2018 NC RESIDENTIAL BUILDING CODE (NRC). TABLES AND FIGURES REFERENCED ARE FROM THE 2018 NRC.
2. SEE THIS SHEET FOR GENERAL DETAILS. REFER TO THE 2018 NRC FOR ADDITIONAL INFORMATION AS NEEDED.
3. SEE STRUCTURAL SHEETS FOR BRACED WALL LOCATIONS, DIMENSIONS, HOLD DOWN TYPE AND LOCATIONS, BRACED WALL LINE KEY WITH WALL DESIGN SUMMARY OF REQUIRED/PROVIDED TOTALS FOR EACH WALL LINE AND ANY SPECIAL NOTES OR REQUIREMENTS.
4. ALL EXTERIOR WALLS ARE TO BE SHEATHED WITH CS-USP IN ACCORDANCE WITH SECTION R602.10.3 UNLESS NOTED OTHERWISE.
5. ALL EXTERIOR AND INTERIOR WALLS TO HAVE 1/2" GYPSUM INSTALLED, WHEN NOT USING METHOD "GB", GYPSUM TO BE FASTENED PER TABLE R602.10.3, METHOD GB TO BE FASTENED PER TABLE R602.10.1.
6. CS-USP REFERS TO THE "CONTINUOUS SHEATHING - WOOD STRUCTURAL PANELS" WALL BRACING METHOD. 1/4" OSB SHEATHING IS TO BE INSTALLED ON ALL EXTERIOR WALLS ATTACHED w/ 6d COMMON NAILS OR 8d (2 1/2" LONG x 0.13" DIAMETER) NAILS SPACED 6" O.C. ALONG PANEL EDGES AND 12" O.C. IN THE FIELD (UNO.).
7. GB REFERS TO THE "GYPSUM BOARD" WALL BRACING METHOD. 1/2" (MIN) GYPSUM WALL BOARD IS TO BE INSTALLED ON BOTH SIDES OF THE BRACED WALL FASTENED WITH 1 1/4" SCREWS OR 1 5/8" NAILS SPACED 1' O.C. ALONG PANEL EDGES INCLUDING TOP AND BOTTOM PLATES AND INTERMEDIATE SUPPORTS (UNO.). VERIFY ALL FASTENER OPTIONS FOR 1/2" AND 5/8" GYPSUM PRIOR TO CONSTRUCTION. FOR INTERIOR FASTENER OPTIONS SEE TABLE R102.3.5. FOR EXTERIOR FASTENER OPTIONS SEE TABLE R602.3(1). EXTERIOR GB TO BE INSTALLED VERTICALLY.
8. REQUIRED BRACED WALL LENGTH FOR EACH SIDE OF THE CIRCUMSCRIBED RECTANGLE ARE INTERPOLATED PER TABLE R602.10.3, METHOD CS-USP CONTRIBUTES ITS ACTUAL LENGTH, METHOD GB CONTRIBUTES 5 ITS ACTUAL LENGTH, AND METHOD FF CONTRIBUTES 15 TIMES ITS ACTUAL LENGTH.

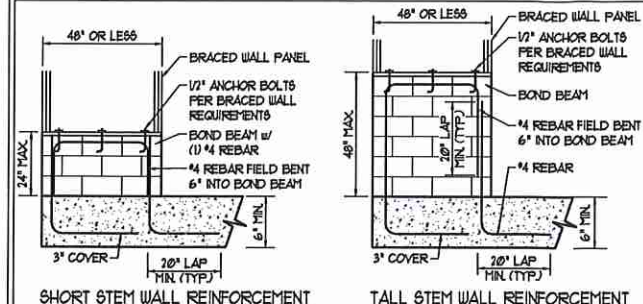


OVER CONCRETE OR MASONRY BLOCK FOUNDATION

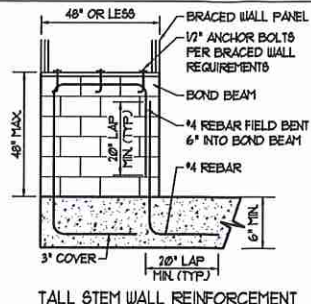


OVER RAISED WOOD FLOOR - FRAMING ANCHOR OPTION
* APPLICABLE w/ GREATER THAN 12\"/>

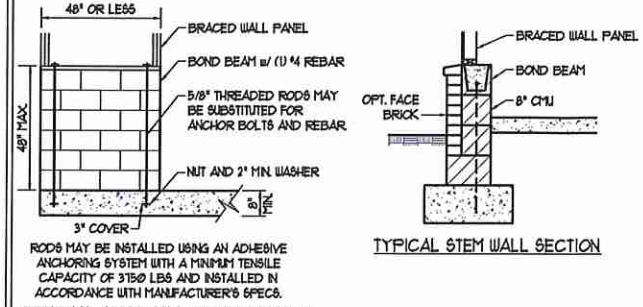
METHOD FF-PORTAL FRAME DETAIL ①



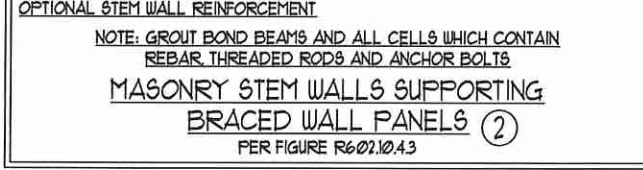
SHORT STEM WALL REINFORCEMENT



TALL STEM WALL REINFORCEMENT

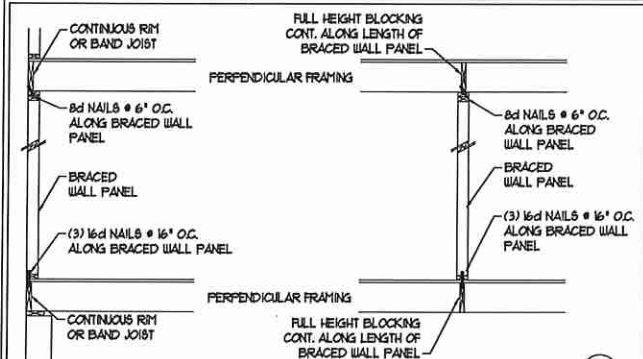


TYPICAL STEM WALL SECTION

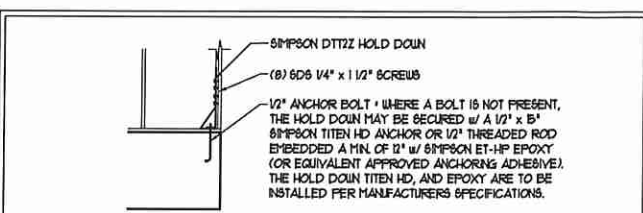


OPTIONAL STEM WALL REINFORCEMENT

NOTE: GROUT BOND BEAMS AND ALL CELLS WHICH CONTAIN REBAR THREADED RODS AND ANCHOR BOLTS
MASONRY STEM WALLS SUPPORTING BRACED WALL PANELS ②
PER FIGURE R602.10.4.3

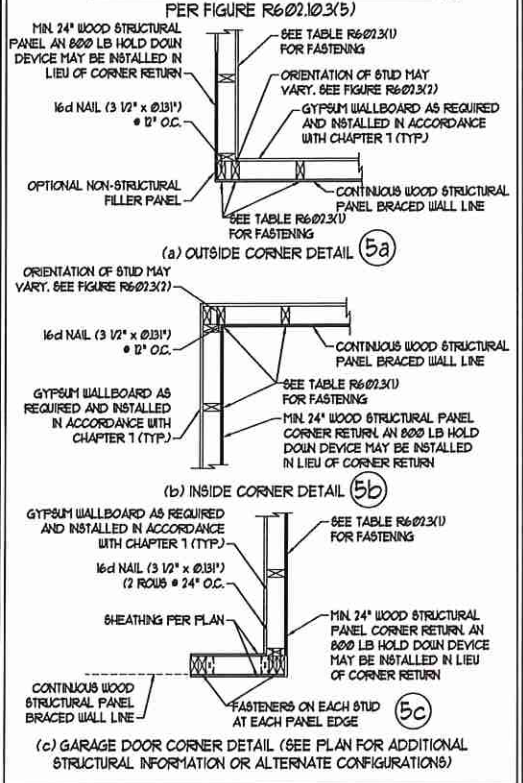


BRACED WALL PANEL CONNECTION WHEN PERPENDICULAR TO FLOOR/CEILING FRAMING ③
PER FIGURE R602.10.4.4(1)

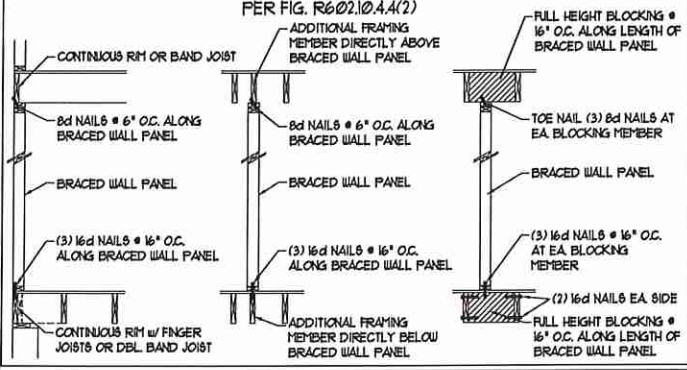


HOLD DOWN DETAIL FOR MASONRY FOUNDATION OR MONOLITHIC SLAB ④
* APPLICABLE ONLY WHERE SPECIFIED ON PLAN *

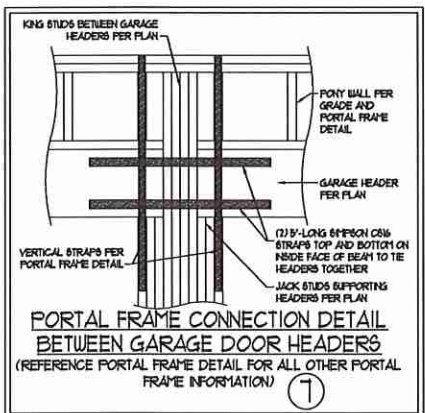
TYPICAL EXTERIOR CORNER FRAMING FOR CONTINUOUS SHEATHING ⑤



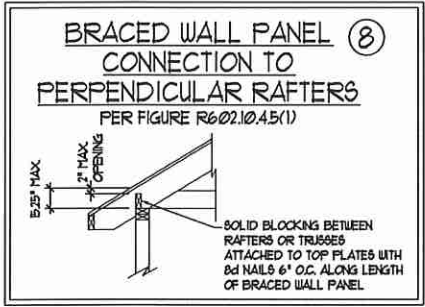
BRACED WALL PANEL CONNECTION WHEN PARALLEL TO FLOOR/CEILING FRAMING ⑥



BRACED WALL PANEL CONNECTION WHEN PARALLEL TO FLOOR/CEILING FRAMING ⑥
PER FIG. R602.10.4.4(2)

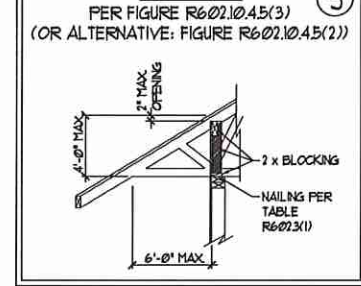


PORTAL FRAME CONNECTION DETAIL BETWEEN GARAGE DOOR HEADERS
(REFERENCE PORTAL FRAME DETAIL FOR ALL OTHER PORTAL FRAME INFORMATION) ⑦



BRACED WALL PANEL CONNECTION TO PERPENDICULAR RAFTERS
PER FIGURE R602.10.4.5(1)

BRACED WALL PANEL CONNECTION TO PERPENDICULAR ROOF TRUSSES ⑨



BRACED WALL PANEL CONNECTION TO PERPENDICULAR ROOF TRUSSES ⑨
PER FIGURE R602.10.4.5(3) (OR ALTERNATIVE: FIGURE R602.10.4.5(2))

This sealed page is to be used in conjunction with a full plan set engineered by J.S. Thompson Engineering, Inc. only. Use of this individual sealed page within architectural pages or shop drawings by others is a punishable offense under N.C. Statute § 89C-23



J.S. THOMPSON ENGINEERING, INC.
608 WADE AVE., SUITE 104 RALEIGH, NC 27605
PHONE (919) 789-9919 FAX (919) 789-9921
N.C. LICENSE NO. 61375

120 MPH - 130 MPH ULTIMATE DESIGN WIND SPEED
WALL BRACING NOTES AND DETAILS

DATE: NOVEMBER 14, 2018
SCALE: 1/4" = 1'-0"
DRAWN BY: JST
ENGINEERED BY: JST

D-2
BRACED WALL NOTES AND DETAILS AND FF DETAIL

GENERAL NOTES

- ENGINEER'S SEAL APPLIES ONLY TO STRUCTURAL COMPONENTS INCLUDING ROOF RAFTERS, HIP, VALLEYS, RIDGES, FLOORS, WALLS, BEAMS, HEADERS, COLUMNS, CANTILEVERS, OFFSET LOAD BEARING WALLS, PIERS, GIRDER SYSTEM AND FOOTING. ENGINEER'S SEAL DOES NOT CERTIFY DIMENSIONAL ACCURACY OF ARCHITECTURAL LAYOUT INCLUDING ROOF. ENGINEER'S SEAL DOES NOT APPLY TO I-JOIST OR FLOOR/ROOF TRUSS LAYOUT DESIGN AND ACCURACY.
- ALL CONSTRUCTION SHALL CONFORM TO THE LATEST REQUIREMENTS OF THE NORTH CAROLINA RESIDENTIAL CODE (NRC), 2018 EDITION, PLUS ALL LOCAL CODES AND REGULATIONS. THE STRUCTURAL ENGINEER IS NOT RESPONSIBLE FOR, AND WILL NOT HAVE CONTROL OF, CONSTRUCTION MEANS, METHODS, TECHNIQUES, SEQUENCES OR PROCEDURES, OR SAFETY PRECAUTIONS AND PROGRAMS IN CONNECTION WITH THE CONSTRUCTION WORK. NOR WILL THE ENGINEER BE RESPONSIBLE FOR THE CONTRACTOR'S FAILURE TO CARRY OUT THE CONSTRUCTION WORK IN ACCORDANCE WITH THE CONTRACT DOCUMENTS.
- STRUCTURAL DESIGN BASED ON THE PROVISIONS OF THE NRC, 2018 EDITION (R3014 - R3017).

DESIGN CRITERIA	LIVE LOAD (PSF)	DEAD LOAD (PSF)	DEFLECTION (IN)
ATTIC WITH LIMITED STORAGE	20	10	L/740 (L/360 w/ BRITTLE FRISHERS)
ATTIC WITHOUT STORAGE	10	10	L/360
DECKS	40	10	L/360
EXTERIOR BALCONIES	40	10	L/360
FIRE ESCAPES	40	10	L/360
HANDRAILS/GUARDRAILS	200 LB OR 50 (FLF)	10	L/360
PASSENGER VEHICLE GARAGE	50	10	L/360
ROOMS OTHER THAN SLEEPING ROOM	40	10	L/360
SLEEPING ROOMS	30	10	L/360
STAIRS	40	10	L/360
WIND LOAD	(BASED ON TABLE R3012(4) WIND ZONE AND EXPOSURE)		
GROUND SNOW LOAD: Pg	20 (PSF)		

- I-JOIST SYSTEMS DESIGNED WITH 12 PSF DEAD LOAD AND DEFLECTION (IN) OF L/480
- FLOOR TRUSS SYSTEMS DESIGNED WITH 15 PSF DEAD LOAD

- FOR 15 AND 100 MPH WIND ZONES, FOUNDATION ANCHORAGE IS TO COMPLY WITH SECTION R4031.6 OF THE NRC, 2018 EDITION. FOR 10 MPH, 140 MPH, AND 150 MPH WIND ZONES, FOUNDATION ANCHORAGE IS TO COMPLY WITH SECTION 4504 OF THE NRC, 2018 EDITION.
- ENERGY EFFICIENCY COMPLIANCE AND INSULATION VALUES OF THE BUILDING TO BE IN ACCORDANCE WITH CHAPTER II OF THE NRC, 2018 EDITION.

FOOTING AND FOUNDATION NOTES

- FOUNDATION DESIGN BASED ON A MINIMUM ALLOWABLE BEARING CAPACITY OF 2000 PSF. CONTACT GEOTECHNICAL ENGINEER IF BEARING CAPACITY IS NOT ACHIEVED.
- FOR ALL CONCRETE SLABS AND FOOTINGS, THE AREA WITHIN THE PERIMETER OF THE BUILDING ENVELOPE SHALL HAVE ALL VEGETATION, TOP SOIL AND FOREIGN MATERIAL REMOVED. FILL MATERIAL SHALL BE FREE OF VEGETATION AND FOREIGN MATERIAL. THE FILL SHALL BE COMPACTED TO ASSURE UNIFORM SUPPORT OF THE SLAB, AND EXCEPT WHERE APPROVED, THE FILL DEPTHS SHALL NOT EXCEED 24" FOR CLEAN SAND OR GRAVEL. A 4" THICK BASED COURSE CONSISTING OF CLEAN GRADED SAND OR GRAVEL SHALL BE PLACED. A BASE COURSE IS NOT REQUIRED WHERE A CONCRETE SLAB IS INSTALLED ON WELL-DRAINED OR SAND-GRAVEL MIXTURE SOILS CLASSIFIED AS GROUP 1, ACCORDING TO THE UNITED SOIL CLASSIFICATION SYSTEM IN ACCORDANCE WITH TABLE R4091 OF THE NRC, 2018 EDITION.
- PROPERLY DEWATER EXCAVATION PRIOR TO POURING CONCRETE WHEN BOTTOM OF CONCRETE SLAB IS AT OR BELOW WATER TABLE. IF APPLICABLE, 3/4" - 1" DEEP CONTROL JOINTS ARE TO BE SALED WITHIN 4 TO 12 HOURS OF CONCRETE FINISHING AND WALL LOCATIONS HAVE BEEN MARKED. ADJUST WHERE NECESSARY.
- CONCRETE SHALL CONFORM TO SECTION R4022 OF THE NRC, 2018 EDITION. CONCRETE REINFORCING STEEL TO BE ASTM A635 GRADE 60. WELDED WIRE FABRIC TO BE ASTM A185. MAINTAIN A MINIMUM CONCRETE COVER AROUND REINFORCING STEEL OF 3" IN FOOTINGS AND 1 1/2" IN SLABS. FOR POURED CONCRETE WALLS, CONCRETE COVER FOR REINFORCING STEEL MEASURED FROM THE INSIDE FACE OF THE WALL SHALL NOT BE LESS THAN 3/4". CONCRETE COVER FOR REINFORCING STEEL MEASURED FROM THE OUTSIDE FACE OF THE WALL SHALL NOT BE LESS THAN 1 1/2" FOR #5 BARS OR SMALLER, AND NOT LESS THAN 2" FOR #6 BARS OR LARGER.
- MASONRY UNITS TO CONFORM TO ACE 530/ASCE 5 WITH 402. MORTAR SHALL CONFORM TO ASTM C270.
- THE UNSUPPORTED HEIGHT OF MASONRY PIERS SHALL NOT EXCEED FOUR TIMES THEIR LEAST DIMENSION FOR UNFILLED HOLLOW CONCRETE MASONRY UNITS AND TEN TIMES THEIR LEAST DIMENSION FOR SOLID OR SOLID FILLED PIERS. PIERS MAY BE FILLED SOLID WITH CONCRETE OR TYPE M OR S MORTAR. PIERS AND WALLS SHALL BE CAPPED WITH 8" OF SOLID MASONRY.
- THE CENTER OF EACH OF THE PIERS SHALL BEAR IN THE MIDDLE THIRD OF ITS RESPECTIVE FOOTING. EACH GIRDER SHALL BEAR IN THE MIDDLE THIRD OF THE PIERS.
- ALL CONCRETE AND MASONRY FOUNDATION WALLS ARE TO BE CONSTRUCTED IN ACCORDANCE WITH THE PROVISIONS OF SECTION R404 OF THE NRC, 2018 EDITION OR IN ACCORDANCE WITH ACI 318, ACI 332, NCM 1188-A OR ACE 530/ASCE 5 WITH 402. MASONRY FOUNDATION WALLS ARE TO BE REINFORCED PER TABLE R4041(1), R4041(2), R4041(3), OR R4041(4) OF THE NRC, 2018 EDITION. CONCRETE FOUNDATION WALLS ARE TO BE REINFORCED PER TABLE R4041(5) OF THE NRC, 2018 EDITION. STEP CONCRETE FOUNDATION WALLS TO 2 x 6 FRAMED WALLS AT 16" O.C. WHERE GRADE PERMITS (INO).

This sealed page is to be used in conjunction with a full plan set engineered by J.S. Thompson Engineering, Inc. only. Use of this individual sealed page within architectural pages or shop drawings by others is a punishable offense under N.C. Statute § 89C-23

FRAMING NOTES

- ALL FRAMING LUMBER SHALL BE 2" GYP MINIMUM (Fb = 875 PSF, Fv = 375 PSF, E = 16,000,000 PSF) UNLESS NOTED OTHERWISE (INO). ALL TREATED LUMBER SHALL BE 2" GYP MINIMUM (Fb = 975 PSF, Fv = 475 PSF, E = 16,000,000 PSF) UNLESS NOTED OTHERWISE (INO).
- LAMINATED VENEER LUMBER (LVL) SHALL HAVE THE FOLLOWING MINIMUM PROPERTIES: Fb = 26,000 PSF, Fv = 205 PSF, E = 19,000,000 PSF. LAMINATED STRAND LUMBER (LSL) SHALL HAVE THE FOLLOWING MINIMUM PROPERTIES: Fb = 2375 PSF, Fv = 310 PSF, E = 19,000,000 PSF. PARALLEL STRAND LUMBER (PSL) UP TO 1" DEPTH SHALL HAVE THE FOLLOWING MINIMUM PROPERTIES: Fc = 2500 PSF, E = 19,000,000 PSF. PARALLEL STRAND LUMBER (PSL) MORE THAN 1" DEPTH SHALL HAVE THE FOLLOWING MINIMUM PROPERTIES: Fc = 2900 PSF, E = 2,000,000 PSF. INSTALL ALL CONNECTIONS PER MANUFACTURER'S SPECIFICATIONS.
- STRUCTURAL STEEL SHALL CONFORM TO THE FOLLOWING ASTM SPECIFICATIONS:
 - A. W AND WFL SHAPES: ASTM A992
 - B. CHANNELS AND ANGLES: ASTM A36
 - C. PLATES AND BARS: ASTM A36
 - D. HOLLOW STRUCTURAL SECTIONS: ASTM A500 GRADE B
 - E. STEEL PIPE: ASTM A53, GRADE B, TYPE E OR S

- STEEL BEAMS SHALL BE SUPPORTED AT EACH END WITH A MINIMUM BEARING LENGTH OF 3 1/2" AND FULL FLANGE WIDTH (INO). PROVIDE SOLID BEARING FROM BEAM SUPPORT TO FOUNDATION. BEAMS SHALL BE ATTACHED AT THE BOTTOM FLANGE TO EACH SUPPORT AS FOLLOWS (INO):
 - A. WOOD FRAMING: (2) 1/2" DIA. x 4" LONG LAG SCREWS
 - B. CONCRETE: (2) 1/2" DIA. x 4" WEDGE ANCHORS
 - C. MASONRY (FULLY GROUTED): (2) 1/2" DIA. x 4" LONG SIMPSON TITEN HD ANCHORS

- LATERAL SUPPORT IS CONSIDERED ADEQUATE PROVIDING THE JOISTS ARE TOE NAILED TO THE 2x NAILER ON TOP OF THE STEEL BEAM, AND THE 2x NAILER IS SECURED TO THE TOP OF THE STEEL BEAM w/ (2) ROWS OF SELF TAPPING SCREWS @ 16" O.C. OR (2) ROWS OF 1/2" DIAMETER BOLTS @ 16" O.C. IF 1/2" BOLTS ARE USED TO FASTEN THE NAILER, THE STEEL BEAM SHALL BE FABRICATED w/ (2) ROWS OF 3/8" DIAMETER HOLES @ 16" O.C.

- SQUARES DENOTE POINT LOADS WHICH REQUIRE SOLID BLOCKING TO GIRDER OR FOUNDATION. SHADED SQUARES DENOTE POINT LOADS FROM ABOVE WHICH REQUIRE SOLID BLOCKING TO SUPPORTING MEMBER BELOW.
- ALL LOAD BEARING HEADERS TO CONFORM TO TABLE R602.1(1) AND R602.1(2) OF THE NRC, 2018 EDITION OR BE (2) 2 x 6 WITH (1) JACK AND (1) KING STUD EACH END (INO), WHICHEVER IS GREATER. ALL HEADERS TO BE SECURED TO EACH JACK STUD WITH (4) 8d NAILS. ALL BEAMS TO BE SUPPORTED WITH (2) STUDS AT EACH BEARING POINT (INO). INSTALL KING STUDS PER SECTION R602.15 OF THE NORTH CAROLINA RESIDENTIAL CODE, 2018 EDITION.
- ALL BEAMS, HEADERS, OR GIRDER TRUSSES PARALLEL TO WALL ARE TO BEAR FULLY ON (1) JACK OR (2) STUDS MINIMUM OR THE NUMBER OF JACKS OR STUDS NOTED. ALL BEAMS OR GIRDER TRUSSES PERPENDICULAR TO WALL AND SUPPORTED BY (3) STUDS OR LESS ARE TO HAVE 1 1/2" MINIMUM BEARING (INO). ALL BEAMS OR GIRDER TRUSSES PERPENDICULAR TO WALL AND SUPPORTED BY MORE THAN (3) STUDS OR OTHER NOTED COLUMN ARE TO BEAR FULLY ON SUPPORT COLUMN FOR ENTIRE WALL DEPTH (INO). BEAM ENDS THAT BUTT INTO ONE ANOTHER ARE TO EACH BEAR EQUAL LENGTHS (INO).
- FLITCH BEAMS SHALL BE BOLTED TOGETHER USING 1/2" DIAMETER BOLTS (ASTM A307) WITH WASHERS PLACED AT THREADED END OF BOLT. BOLTS SHALL BE SPACED AT 24" CENTERS (MAXIMUM), AND STAGGERED AT TOP AND BOTTOM OF BEAM (2" EDGE DISTANCE), WITH (2) BOLTS LOCATED AT 6" FROM EACH END (INO).
- ALL I-JOIST OR TRUSS LAYOUTS ARE TO BE IN COMPLIANCE WITH THE OVERALL DESIGN SPECIFIED ON THE PLANS. ALL DEVIATIONS ARE TO BE BROUGHT TO THE ATTENTION OF THE ENGINEER OF RECORD PRIOR TO INSTALLATION.
- BRACED WALL PANELS SHALL BE CONSTRUCTED ACCORDING TO THE NORTH CAROLINA RESIDENTIAL CODE 2018 EDITION WALL BRACING CRITERIA. THE AMOUNT, LENGTH, AND LOCATION OF BRACING SHALL COMPLY WITH ALL APPLICABLE TABLES IN SECTION R602.10.
- PROVIDE DOUBLE JOIST UNDER ALL WALLS PARALLEL TO FLOOR JOISTS. PROVIDE SUPPORT UNDER ALL WALLS PARALLEL TO FLOOR TRUSSES OR I-JOISTS PER MANUFACTURER'S SPECIFICATIONS. INSTALL BLOCKING BETWEEN JOISTS OR TRUSSES FOR POINT LOAD SUPPORT FOR ALL POINT LOADS ALONG OFFSET LOAD LINES.
- FOR ALL HEADERS SUPPORTING BRICK VENEER THAT ARE LESS THAN 8'-0" IN LENGTH, REST A 6" x 4" x 5/16" STEEL ANGLE WITH 6" MINIMUM EMBEDMENT AT SIDES FOR BRICK SUPPORT (INO). FOR ALL HEADERS 8'-0" AND GREATER IN LENGTH, BOLT A 6" x 4" x 5/16" STEEL ANGLE TO HEADER WITH 1/2" LAG SCREWS AT 12" O.C. STAGGERED FOR BRICK SUPPORT. FOR ALL BRICK SUPPORT AT ROOF LINES, BOLT A 6" x 4" x 5/16" STEEL ANGLE TO (2) 2 x 10 BLOCKING INSTALLED w/ (4) 8d NAILS EA. PLY BETWEEN WALL STUDS WITH (2) ROWS OF 1/2" LAG SCREWS AT 12" O.C. STAGGERED AND IN ACCORDANCE WITH SECTION R703.0(2) OF THE NRC, 2018 EDITION.
- FOR STICK FRAMED ROOFS: CIRCLES DENOTE (3) 2 x 4 POSTS FOR ROOF MEMBER SUPPORT. HIP SPLICES ARE TO BE SPACED A MINIMUM OF 8'-0". FASTEN MEMBERS WITH THREE ROWS OF 8d NAILS AT 16" O.C. FRAME DORMER WALLS ON TOP OF DOUBLE OR TRIPLE RAFTERS AS SHOWN (INO).
- FOR TRUSSED ROOFS: FRAME DORMER WALLS ON TOP OF 2 x 4 LADDER FRAMING AT 24" O.C. BETWEEN ADJACENT ROOF TRUSSES. STICK FRAME OVER-FRAMED ROOF SECTIONS WITH 2 x 8 RIDGES, 2 x 6 RAFTERS AT 16" O.C. AND FLAT 2 x 10 VALLEYS (INO).
- ALL 4 x 4 AND 6 x 6 POSTS TO BE INSTALLED WITH 100 LB CAPACITY UPLIFT CONNECTORS TOP AND BOTTOM (INO). POSTS MAY BE SECURED USING ONE SIMPSON 1/6 OR LTR2 UPLIFT CONNECTOR FASTENED TO THE BAND AT THE BOTTOM AND THE BEAM AT THE TOP OF EACH POST. ONE 1/2" SECTION OF SIMPSON C516 COIL STRAPPING WITH (8) 8d HDG NAILS AT EACH END MAY BE USED IN LIEU OF EACH TWIN STRAP IF DESIRED. FOR MASONRY OR CONCRETE FOUNDATION USE SIMPSON POST BASE.

J.S. THOMPSON ENGINEERING, INC
 606 WADE AVE. SUITE 104, RALEIGH, NC 27603
 PHONE: (919) 789-9119 FAX: (919) 789-9921
 N.C. LICENSE NO.: C-1733

120 MPH - 130 MPH ULTIMATE DESIGN WIND SPEED
 STANDARD STRUCTURAL NOTES

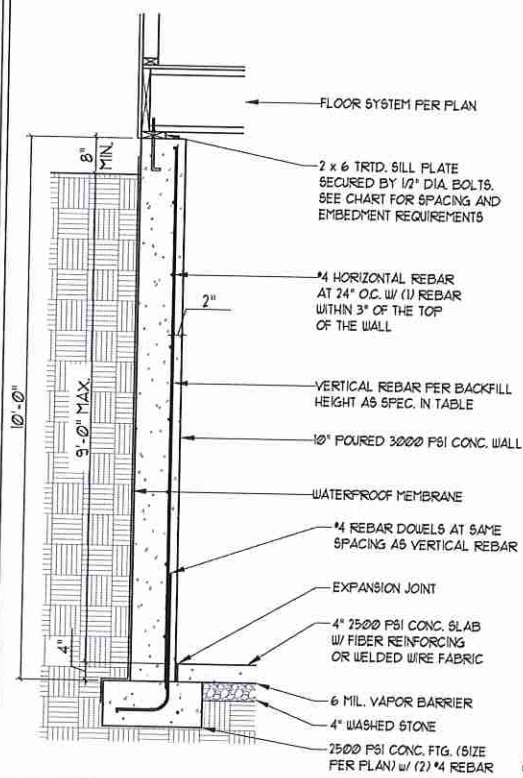


DATE: NOVEMBER 14, 2018
 SCALE: 1/4" = 1'-0"
 DRAWN BY: JES
 ENGINEERED BY: JST

SO
 STRUCTURAL
 NOTES

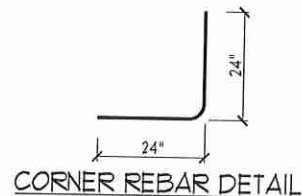
8/27/2020

10" POURED BASEMENT WALL



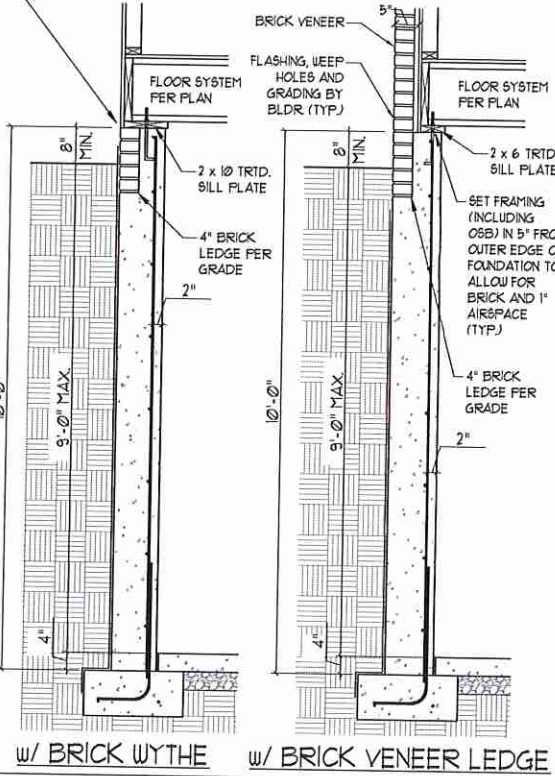
BACKFILL HEIGHT (FT)	VERTICAL REBAR
≤ 5	#4 @ 48" O.C.
6	#4 @ 32" O.C.
7	#4 @ 24" O.C. OR #5 @ 36" O.C. OR #6 @ 56" O.C.
8	#4 @ 20" O.C. OR #5 @ 32" O.C. OR #6 @ 48" O.C.
9	#4 @ 16" O.C. OR #5 @ 24" O.C. OR #6 @ 40" O.C.

BASEMENT WALL REINFORCEMENT TABLE



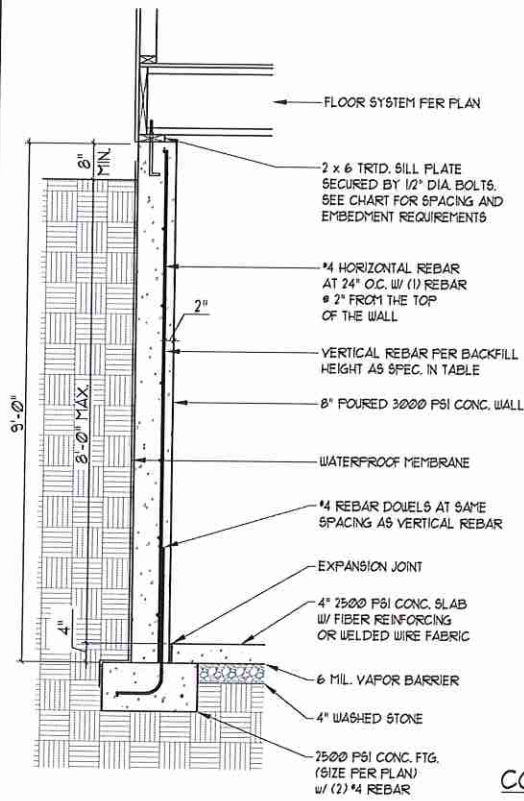
CORNER REBAR DETAIL

WHERE FRAMED WALLS WILL BE SUPPORTED PARTIALLY BY THE BRICK WYTHE, STANDARD CORRUGATED WALL TIES ARE TO BE FASTENED TO THE POURED WALLS w/ 1 1/4" LONG CONCRETE SCREWS OR 1 1/8" POUWER DRIVEN FASTENERS @ 16" O.C. HORIZONTALLY AND VERTICALLY. WALL TIES ARE TO BE LOCATED A MIN. OF 8" FROM THE TOP OF THE WALL AND ARE FULLY EMBEDDED INTO THE HEAD AND BED JOINTS. ALL FASTENERS ARE TO BE INSTALLED PER THE MANUFACTURERS SPECS.



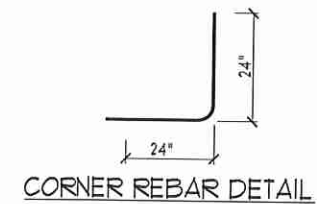
w/ BRICK WYTHE w/ BRICK VENEER LEDGE

8" POURED BASEMENT WALL

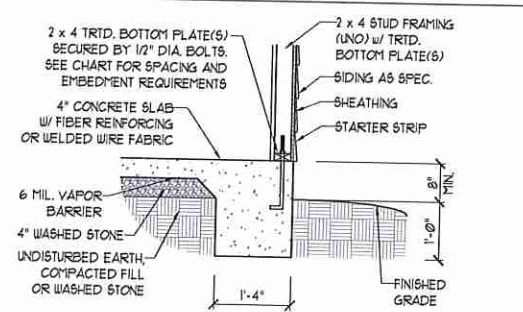


BACKFILL HEIGHT (FT)	VERTICAL REBAR
≤ 5	#4 @ 48" O.C.
6	#4 @ 24" O.C. OR #5 @ 36" O.C.
7	#4 @ 16" O.C. OR #5 @ 24" O.C. OR #6 @ 56" O.C.
8	#4 @ 12" O.C. OR #5 @ 18" O.C. OR #6 @ 28" O.C. OR

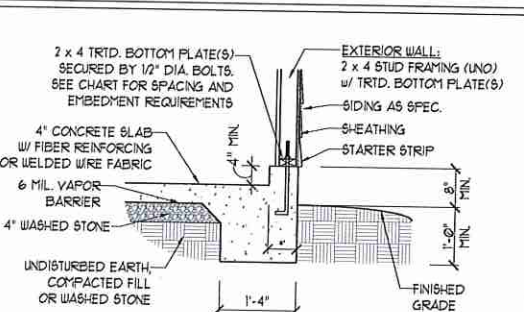
BASEMENT WALL REINFORCEMENT TABLE



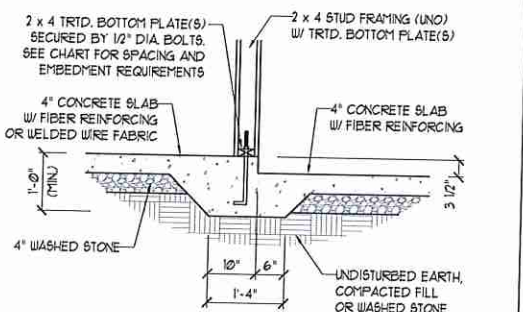
CORNER REBAR DETAIL



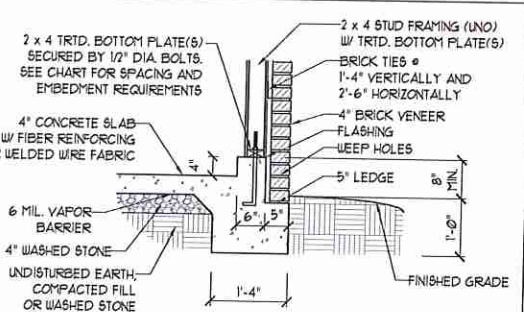
TYPICAL SLAB



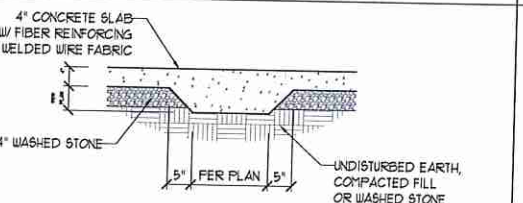
GARAGE CURB



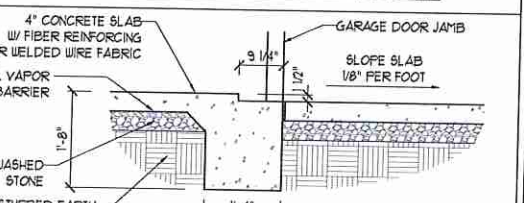
STEP IN GARAGE



GARAGE CURB w/ BRICK LEDGE



TYPICAL THICKENED SLAB



SLAB AT GARAGE DOOR

ANCHOR SPACING AND EMBEDMENT

WIND ZONE	120 MPH	130 MPH
SPACING	6'-0" O.C. INSTALL MIN. (2) ANCHORS PER PLATE SECTION AND (1) ANCHOR WITHIN 12" OF CORNERS	4'-0" O.C. INSTALL MIN. (2) ANCHORS PER PLATE SECTION AND (1) ANCHOR WITHIN 12" OF CORNERS
EMBEDMENT	1"	15" INTO MASONRY 1" INTO CONCRETE

NOTE:

THREADED ROD WITH EPOXY, SIMPSON TITEN HD, OR APPROVED ANCHORS SPACED AS REQUIRED TO PROVIDE EQUIVALENT ANCHORAGE TO 1/2" DIAMETER ANCHOR BOLTS MAY BE USED IN LIEU OF 1/2" ANCHOR BOLTS.

IMPORTANT NOTE:

FOUNDATIONS AS DENOTED IN THESE DETAILS ARE NOT SUITABLE FOR SUPPORT OF ADDITIONAL SURCHARGE LOADING FROM ADJACENT STRUCTURES OR DRIVEWAYS. FOUNDATIONS WITH EXTRA LATERAL LOADING IN THESE SCENARIOS WILL REQUIRE LOT SPECIFIC DESIGN ON A CASE BY CASE BASIS. CONSULT THE ENGINEER OF RECORD WHEN PLANNING TO BUILD IN CLOSE PROXIMITY TO THE FOUNDATION AS WE WILL NOT BE HELD LIABLE FOR FOUNDATION FAILURE. SEE R403.19 OF THE 2018 NCRS FOR ADDITIONAL INFORMATION.

STRUCTURAL NOTES:

- FOR #4 REBAR, 24" MINIMUM REBAR LAP SPLICE LENGTH. FOR #5 REBAR, 32" MINIMUM REBAR LAP SPLICE LENGTH. FOR #6 REBAR, 38" MINIMUM REBAR LAP SPLICE LENGTH.
- REBAR TO MAINTAIN A MINIMUM CONCRETE COVER OF 3" (MIN).
- REBAR TO BE ASTM A615 GRADE 60.
- SOIL BEARING CAPACITY IS REQUIRED TO BE 2000 PSF MIN.
- INSTALL #4 L-BARS AT ALL WALL CORNERS AT SAME SPACING AS HORIZ. STEEL. SEE DETAIL.
- THE FLOOR FRAMING IS TO BE INSTALLED AND A MIN. OF SEVEN DAYS IS REQUIRED TO ALLOW THE CONCRETE TO CURE BEFORE THE BACKFILL CAN BE INSTALLED. THE BACKFILL IS RECOMMENDED TO BE PLACED IN 12" LIFTS AND CAREFULLY TAMPED.
- A 4" LEDGE IS TO BE PROVIDED FOR THE PORCH SLAB. THE WALLS ARE REQUIRED TO BE BONDED TO THE SLABS USING #4 x 36" REBAR DOUELS @ 32" O.C. EMBEDDED 4" INTO THE CONC. USING EPOXY.
- WHERE THE FLOOR JOISTS ARE PARALLEL TO THE WALLS, 2 x 4 BLOCKING IS TO BE INSTALLED 24" O.C. BETWEEN THE BOTTOM FLANGES OF THE I-JOISTS FOR A MIN. OF 6'-0" AWAY FROM THE WALL OR DIAGONAL 2 x 6 BLOCKS MAY BE INSTALLED 24" O.C. FROM THE EDGE OF THE SILL PLATE TO THE TOP FLANGE AND SUBFLOORING, ATTACHED w/ (3) 12d NAILS EACH END.

NOTE TO FOUNDATION CONTRACTOR:

ALTERNATE REINFORCED CONCRETE POURED WALL DESIGNS ENGINEERED BY OTHERS MAY BE CONSTRUCTED. NO CONTINUOUS FOOTINGS OR LUG FOOTINGS MAY BE REDUCED IN SIZE.



J.S. THOMPSON ENGINEERING, INC.
606 WADE AVE., SUITE 104 RALEIGH, NC 27605
PHONE: (919) 786-9919 FAX: (919) 786-9921
N.C. LICENSE NO.: C-1173

POURED WALL BASEMENT FOUNDATION DETAILS

DATE: JULY 17, 2020
SCALE: NTS
DRAWN BY: JES/JFT
ENGINEERED BY: JES/JFT

FOUNDATION DETAILS

This sealed page is to be used in conjunction with a full plan set engineered by J.S. Thompson Engineering, Inc. only. Use of this individual sealed page within architectural pages or shop drawings by others is a punishable offense under N.C. Statute § 89C-23