

# JORDAN

## JORDAN REVISION LIST - STRUCTURAL:

- 1.) CODE UPDATE TO SCRC 2018 (1-20)
- 2.) CHANGE 2X6 EXTERIOR WALLS TO 2X4 EXTERIOR WALLS. (3-5-20)
- 3.) ADDED BASEMENT PLAN WHICH EXTENDS GARAGE FRONT 2'-0". (5-1-20)

## JORDAN REVISION LIST - ARCHITECTURAL:

- 1.) UPDATED PLANS: 7'-0" HDR HGT. ADDED 2 HOSE BIBB LOC'NS, CHANGE MASTERS TO OWNERS, CHANGE SOFFITS TO C.O., CHANGE MASTERS BATH TO OWNER'S BATH 1, CHANGED POWDER TO PDR 1, AND CHANGED BATH TO BATH 2. (11-4-19)
- 2.) ADDED ROOF VENT CALCULATIONS FOR ELEV. A AND B. (12-2-19)
- 3.) UPDATED CUTSHEETS FOR THE GARAGE RIGHT. (12-13-19)
- 4.) CHANGED FIREPLACE FROM STANDARD TO OPTIONAL. (5-1-20)
- 5.) REMOVE GLASS INSERTS FROM GARAGE WINDOWS AND REMOVE METAL ACCESSORIES. (5-1-20)
- 6.) UPDATED CUTSHEETS TO MEET H&H STANDARDS. (5-1-20)
- 7.) ADDED OPTIONAL GLASS INSERTS TO TOP WINDOWS ONLY TO GARAGE DOORS. (5-1-20)
- 8.) CHANGED THE CORNERBOARDS FROM 6" TO 4". (5-1-20)
- 9.) REMOVED OPTIONAL KITCHEN CAN AND REPLACED WITH FLUORSCENT LIGHT IN THE KITCHEN. (5-1-20)
- 10.) CHANGE LOCATION OF THE HOSE BIBBS. (5-1-20)
- 11.) ADDED OPTIONAL GAS LINE NOTE AT PATIO. (5-1-20)
- 12.) CHANGED REFRIGERATOR, WASHER, AND DRYER TO OPTIONAL COMPONENTS. (5-1-20)
- 13.) CHANGE COFFERED CEILING IN DINING TO OPTIONAL WITH DETAIL. (5-1-20)
- 14.) ADDED WEATHERING STRIPPING AT 2'-0" X 4'-0" SOLID DOOR. (5-1-20)
- 15.) ADDED NOTE TO REMOVE (1)-3'-0" 5'-0" WINDOW FOR BEDROOM #5 OPTION. (5-1-20)
- 16.) REMOVED GRIDS FROM SIDE AND REAR WINDOWS. (5-1-20)
- 17.) CHANGED 3'-0" 5'-0" WINDOW IN LOFT TO STANDARD. (5-1-20)
- 18.) UPDATED STONE HATCH ON ELEVATIONS. (5-1-20)
- 19.) REMOVED ALL TV OUTLETS, PHONE OUTLETS, AND ELECTRICAL OUTLETS EXCEPT FLOOR OUTLETS. (5-1-20)
- 20.) ADDED CO<sub>2</sub> DETECTORS PER LOCATE CODE. (5-1-20)
- 21.) CHANGED CEILING FANS TO OPTIONAL AND CHANGE THE LIGHTS TO PRE-WIRE. (5-1-20)
- 22.) ADDED CRICKETS TO FRONT ELEVATIONS. (5-1-20)
- 23.) UPDATED THE ELEVATION COACH LIGHTS TO MATCH THE ELECTRICAL PLANS. (5-1-20)
- 24.) CREATED ADDITIONAL SHEETS FOR FIRST FLOOR AND SECOND FLOOR OPTIONS (A4.1, A5.1, A6.1, A7.1, E-3, AND E-4) AND REMOVED OPTIONS FROM BASE SHEETS. (5-1-20)
- 25.) ADDED DIMENSION FOR WATER TABLE TO FINISH FLOOR ON ELEVATION. (5-1-20)
- 26.) ADDED INSULATION DETAIL TO FIRST AND SECOND FLOOR SHEETS. (5-1-20)
- 27.) ADDED OPTIONAL (3) RECESS LIGHTING AND SWITCHES IN FAMILY ROOM. (5-1-20)
- 28.) ADDED SHEET 7.0 FOR FLOOR PLAN EXTERIOR SURFACES LAYOUTS. (5-1-20)
- 28.) CREATED OWNER'S BATH 2 AND OWNER'S BATH 3. (5-1-20)
- 28.) ADDED SHOWER DETAIL FOR OPTIONAL OWNER'S BATH 3. (5-1-20)
- 29.) UPDATED CUTSHEETS. (5-1-20)
- 30.) CHANGED OWNER'S BATH #3 WINDOW FROM 2'-0" 2'-0" WINDOW TO 2'-0" 4'-0" TEMP. (5-1-20)
- 31.) ADDED PATIO W/ EXTENDED PATIO OPTION. (5-1-20)
- 32.) ADDED OPTIONAL BASEMENT PLAN. (5-1-20)
- 33.) ADDED CHANGES TO OPTIONS WHEN BASEMENT OPTION SELECTED. (5-1-20)
- 34.) REVISED SHUTTERS ON ELEVATIONS B TO BE B&B (5-1-20)
- 35.) REMOVED HARDWARE FROM SHUTTERS ON ELEVATION C (5-1-20)
- 36.) REMOVED LIGHT OVER KITCHEN SINK (7-8-20)
- 37.) REMOVED NOTE "KEYLESS" FROM GARAGE CHANGED TO STANDARD CEILING MOUNTED LIGHT (7-8-20)
- 38.) CHANGED STANDARD LIGHT IN KITCHEN FROM 2-BULB FLUORESCENT TO 3 BULB CEILING MOUNT (7-8-20)
- 39.) CHANGED SWING OF SERVICE DOOR IN GARAGE TO OUT SWING (SEE SHEET A6.1) (7-8-20)
- 40.) REMOVED LIGHT IN SECONDARY BATH OVER TUB/SHOWER COMBO (7-8-20)
- 41.) REMOVED "RECESSED ENTERTAINMENT BOX" OVER FIREPLACE (7-8-20)



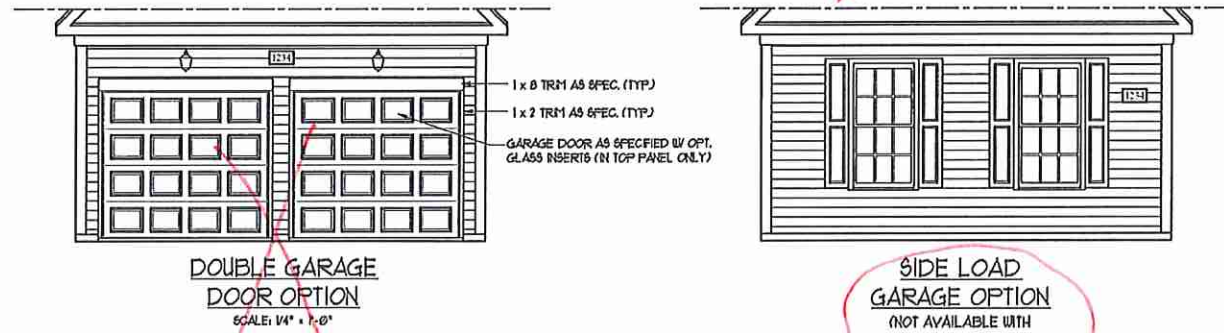
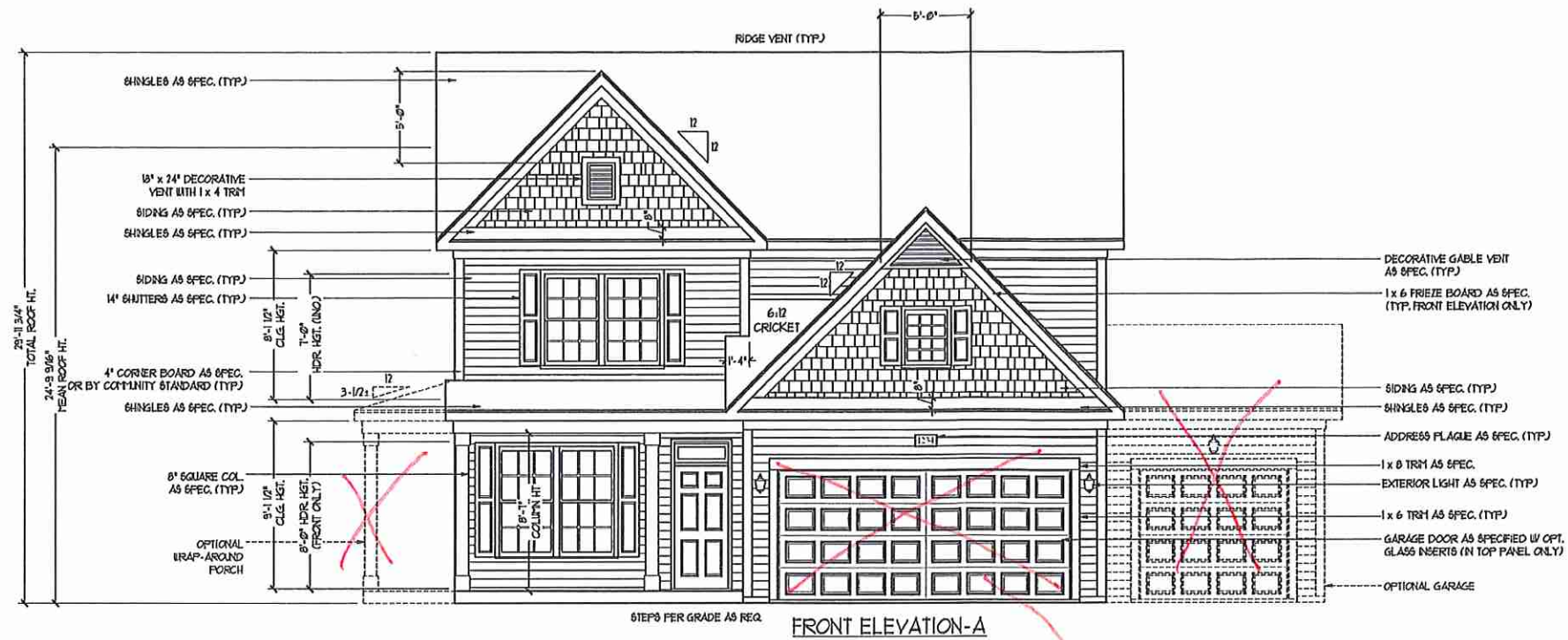
COVER SHEET

H&H HOMES  
JORDAN

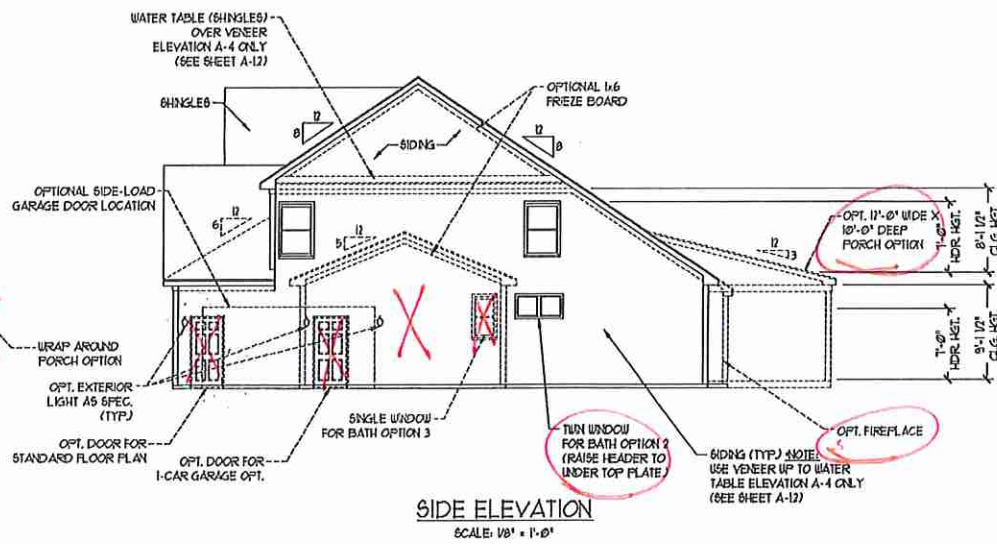
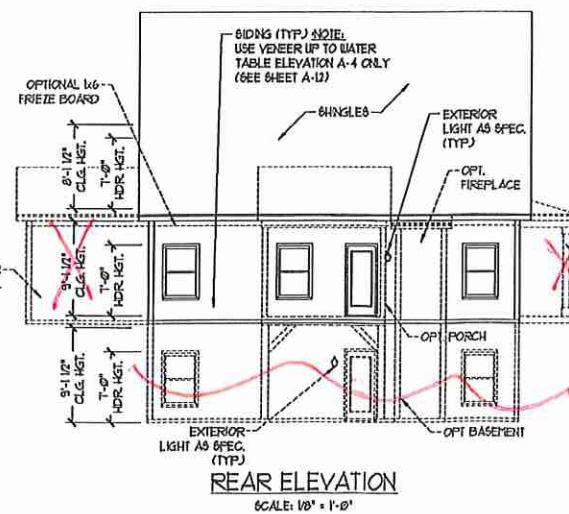
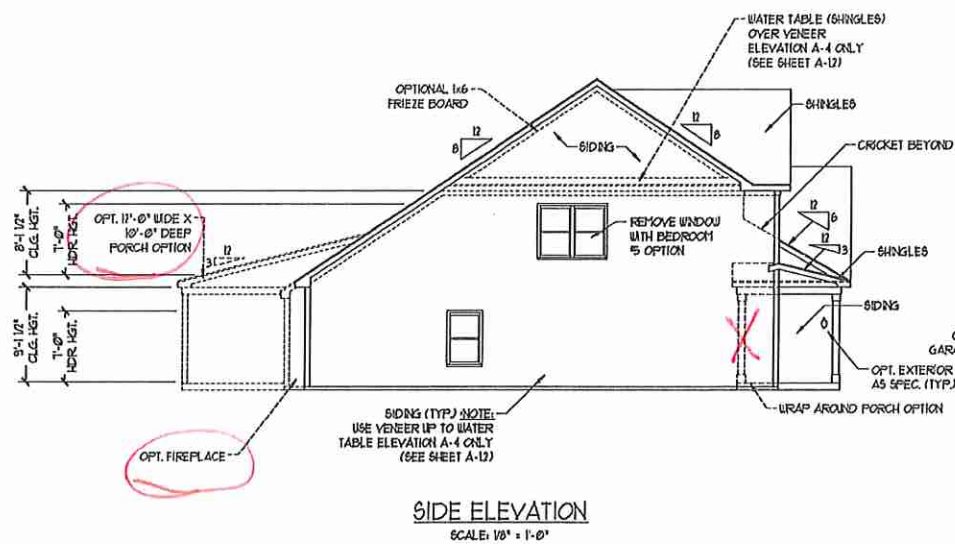
DATE: MARCH 15, 2019  
REV: MAY 01, 2020  
DRAWN BY:  
ENGINEERED BY:  
REVIEWED BY:

CS

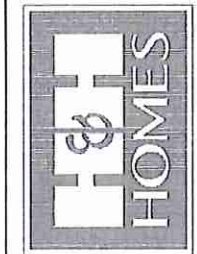
*OKM 075 Buyer Marked Plan*



**NOTE:**  
 SEE SHEET A-11 FOR BRICK FRONT ELEVATIONS  
 SEE SHEET A-12 FOR STONE FRONT ELEVATIONS  
 SEE SHEET A-13 (ALL BRICK) ELEVATIONS



**J.S. THOMPSON**  
 ENGINEERING, INC.  
 626 WADSWORTH AVE., SUITE 104  
 RALEIGH, NC 27605  
 PHONE: (919) 286-9920  
 FAX: (919) 286-9921  
 N.C. LICENSE NO. C-1173



FRIZES, FLOORS, INCENTIVES, FEATURES, OPTIONS, FLOOR PLANS, ELEVATIONS, DESIGNS, MATERIALS AND FINISHES ARE SUBJECT TO CHANGE WITHOUT NOTICE. DIMENSIONS AND FINISHES ARE ESTIMATED AND MAY VARY IN ACTUAL CONSTRUCTION. ACTUAL POSITION OF HOUSE ON LOT IS TO BE DETERMINED BY THE SITE PLAN AND THE PLANNING DEPARTMENT. FLOOR PLANS ARE THE COPYRIGHTED PROPERTY OF H&H HOMES, INC. USE, REPRODUCTION, OR DISTRIBUTION OF THIS DOCUMENT IS PROHIBITED. SEE H&H HOMES SALES CONSULTANT FOR CURRENT DETAILS. COPYRIGHT © 2019 H&H HOMES.

**H&H HOMES, INC.**  
 JORDAN

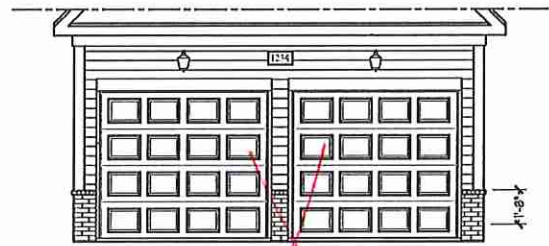
DATE: MARCH 15, 2019  
 REV: MAY 01, 2020  
 SCALE: AS NOTED  
 DRAWN BY:  
 ENGINEERED BY:  
 REVIEWED BY:

A-1 ELEVATIONS  
 A-1

*JMT*



*Brick* FRONT ELEVATION-A-2 (W/ BRICK)  
SCALE: 1/4" = 1'-0"



DOUBLE GARAGE  
DOOR OPTION  
SCALE: 1/4" = 1'-0"



SIDE LOAD  
GARAGE OPTION  
(NOT AVAILABLE WITH OPTIONAL ONE-CAR GARAGE)  
SCALE: 1/4" = 1'-0"

*Brick*

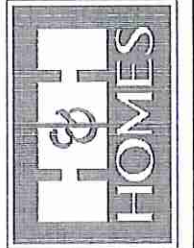


BRICK OR STONE  
LEDGE AS SPEC.

FRONT ELEVATION-A-3 (W/ BRICK)  
SCALE: 1/4" = 1'-0"

*J.M.*

J.S. THOMPSON  
ENGINEERING, INC.  
600 WADE AVE., SUITE 104  
FALEIGH, NC 27645  
PHONE (919) 784-9919  
FAX (919) 787-9921  
N.C. LICENSE NO. C-1133



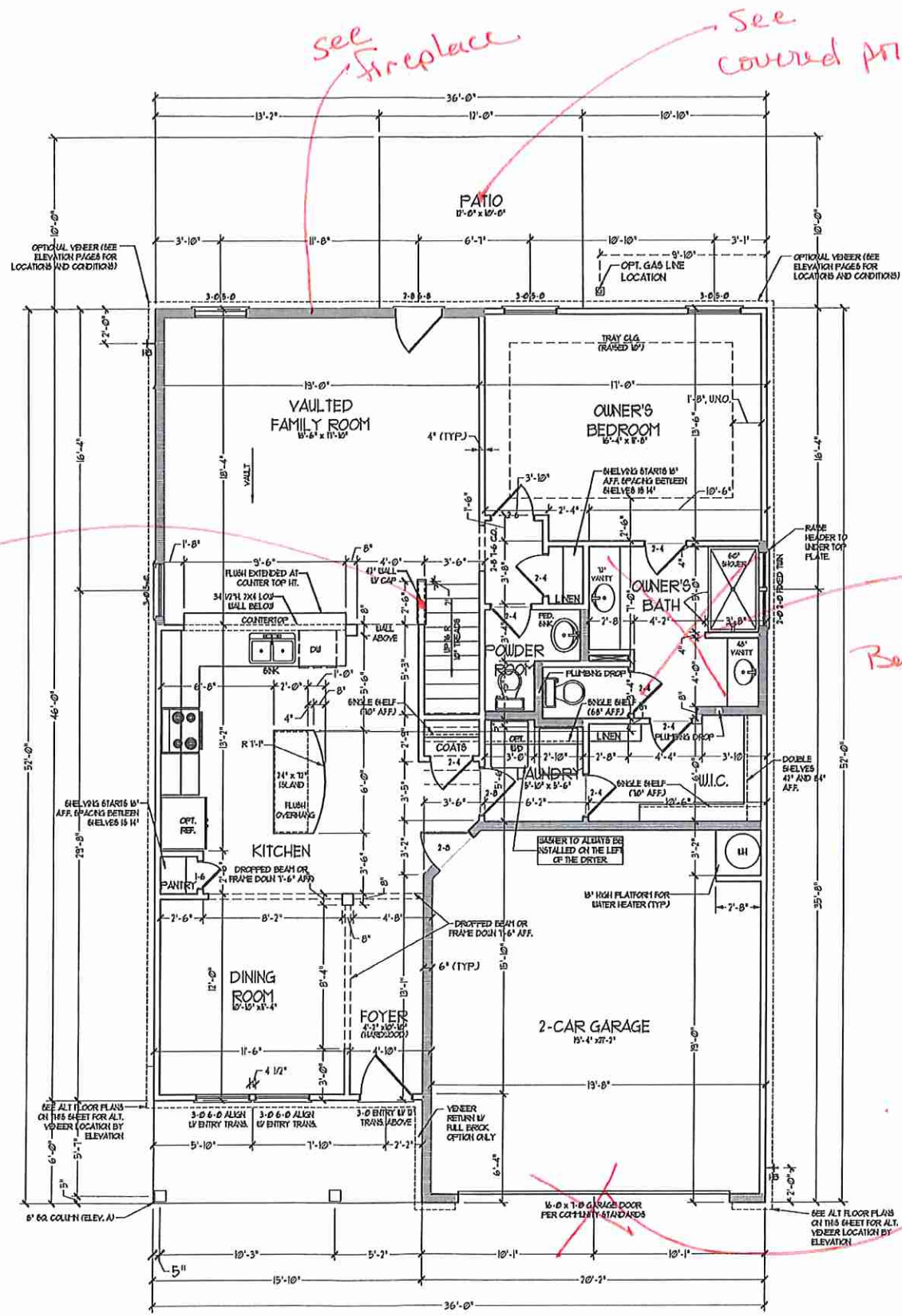
PRICES, PROMOTIONS, INCENTIVES, FEATURES,  
OPTIONS, FLOOR PLANS, ELEVATIONS, DESIGNS,  
AND FINISHES ARE SUBJECT TO CHANGE WITHOUT  
NOTICE. SQUARE FOOTAGE AND DIMENSIONS  
ARE ESTIMATED AND MAY VARY IN ACTUAL  
CONSTRUCTION. ACTUAL POSITION OF HOUSE ON LOT  
MAY VARY FROM THAT SHOWN ON THIS PLAN.  
FLOOR PLANS AND ELEVATION DRAWINGS ARE ARTIST  
CONCEPTIONS. FLOOR PLANS ARE THE COPYRIGHTED  
PROPERTY OF H&H HOMES, INC. USE, REPRODUCTION,  
OR DISTRIBUTION OF THIS PLAN IS PROHIBITED.  
SEE NEW HOME SALES CONSULTANT FOR  
CURRENT DETAILS. COPYRIGHT © 2019 H&H HOMES

H&H HOMES, INC.  
JORDAN

DATE: MARCH 15, 2019  
REV.: MAY 01, 2020  
SCALE: AS NOTED  
DRAWN BY:  
ENGINEERED BY:  
REVIEWED BY:

A-2 & A-3  
ELEVATIONS  
WITH BRICK

A-1.2



FIRST FLOOR PLAN  
(A-1, B-1, AND C-1)

SEE PASTIAL FLOOR PLANS ON SHEET A-2 FOR CHANGES TO THE EXTERIOR VEEER FOR ALL ELEVATIONS

| SQUARE FOOTAGE               |              |
|------------------------------|--------------|
| 1st FLOOR                    | 1541 SQ. FT. |
| 2nd FLOOR                    | 1291 SQ. FT. |
| TOTAL                        | 2832 SQ. FT. |
| GARAGE                       | 415 SQ. FT.  |
| FRONT PORCH                  | 35 SQ. FT.   |
| 5TD, REAR PATIO              | 20 SQ. FT.   |
| 1st FLOOR OPTIONS            |              |
| OPT. FIREPLACE               | 10 SQ. FT.   |
| 2nd FLOOR OPTIONS            |              |
| OPT. WINDOW BOX AT BEDROOM 1 | 5 SQ. FT.    |
| UNHEATED OPTIONS             |              |
| OPT. BASEMENT                | 1710 SQ. FT. |
| OPT. 1-CAR GARAGE            | 210 SQ. FT.  |
| OPT. REAR COVERED PORCH      | 20 SQ. FT.   |
| OPT. 12'-0" X 12'-0" PATIO   | 100 SQ. FT.  |

| SQUARE FOOTAGE (W/ FULL BRICK)         |              |
|--|--------------|
| 1st FLOOR                              | 1405 SQ. FT. |
| 2nd FLOOR                              | 1094 SQ. FT. |
| TOTAL                                  | 2499 SQ. FT. |
| GARAGE                                 | 415 SQ. FT.  |
| FRONT PORCH                            | 35 SQ. FT.   |
| 5TD, REAR PATIO                        | 20 SQ. FT.   |
| 1st FLOOR OPTIONS                      |              |
| OPT. FIREPLACE                         | 14 SQ. FT.   |
| 2nd FLOOR OPTIONS                      |              |
| WINDOW BOX AT BEDROOM 1 (ELEV. C ONLY) | 5 SQ. FT.    |
| UNHEATED OPTIONS                       |              |
| OPT. BASEMENT                          | 1710 SQ. FT. |
| OPT. 1-CAR GARAGE                      | 225 SQ. FT.  |
| OPT. REAR COVERED PORCH                | 20 SQ. FT.   |
| OPT. 12'-0" X 12'-0" PATIO             | 100 SQ. FT.  |

NOTE: ALL EXTERIOR WALLS AND ATTIC WALLS ARE TO BE 2 x 4 @ 16" O.C. UNDO. ALL INTERIOR LOAD BEARING WALLS ARE TO BE 2 x 4 @ 16" O.C. UNDO. AND NON-LOAD BEARING INTERIOR WALLS ARE TO BE 2 x 4 @ 24" O.C. UNDO.

2x6 WALL

\* SHADED WALLS ARE TO BE 2 x 6 @ 16" O.C. (LOAD BEARING) OR 2 x 6 @ 24" O.C. (NON-LOAD BEARING) REGARDLESS OF EXTERIOR WALL CONDITION.

Curbwall w/ 2x2 pickets

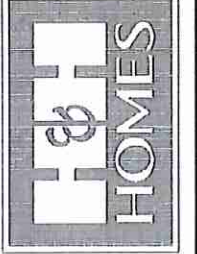
see fireplace

see covered porch

see owner's Bath Option # 2

see side load

J.S. THOMPSON  
WROTHERING, INC.  
666 W. WILSON AVE., SUITE 104  
RALEIGH, NC 27605  
PHONE: (919) 880-9119  
FAX: (919) 880-9111  
S.C. LICENSE NO. C1733



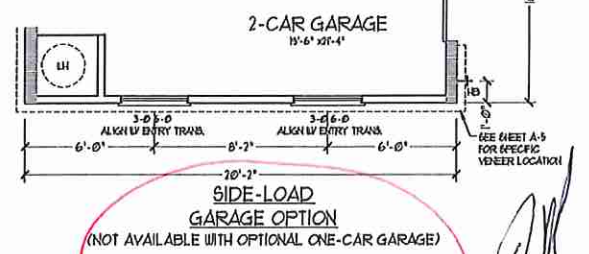
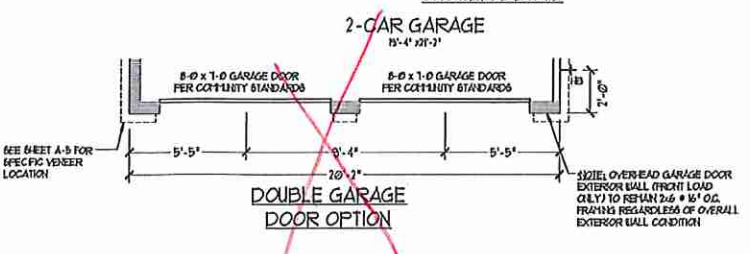
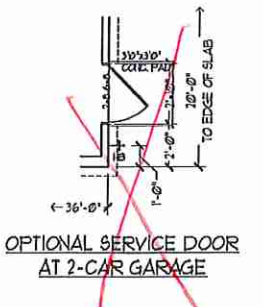
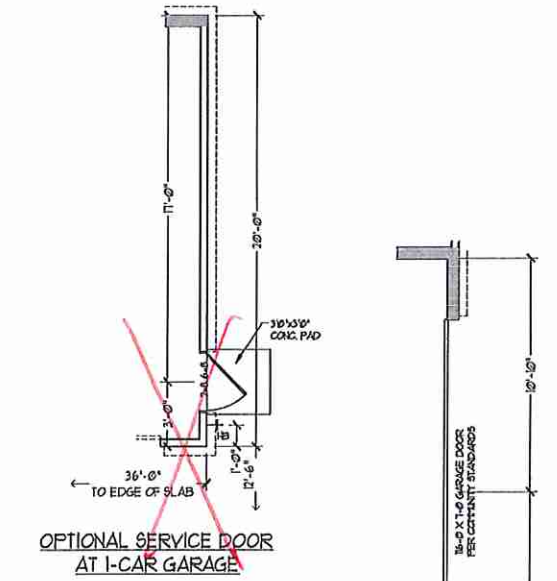
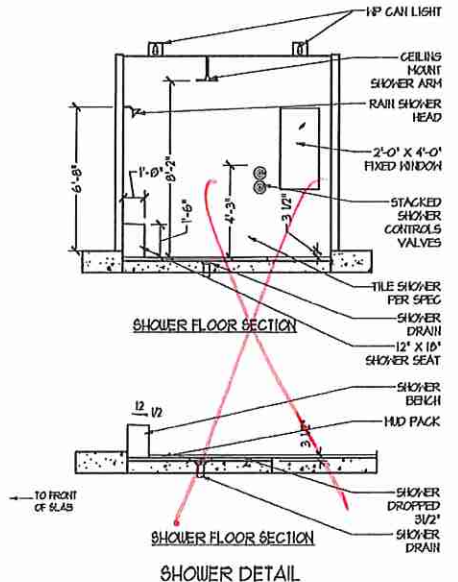
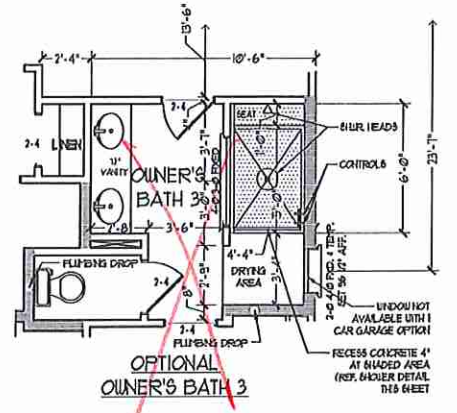
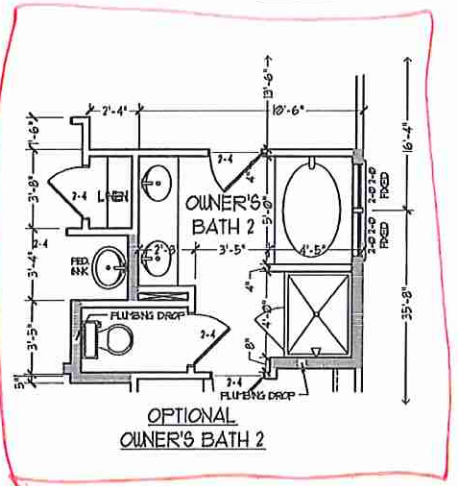
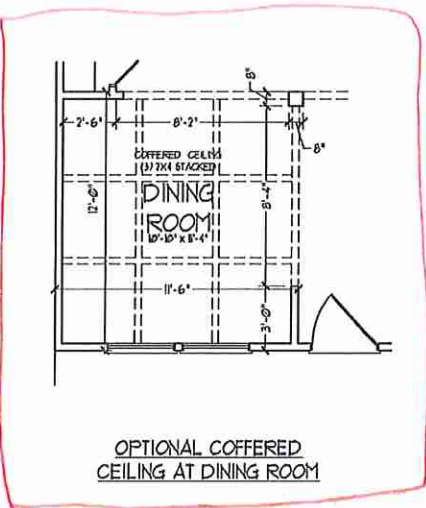
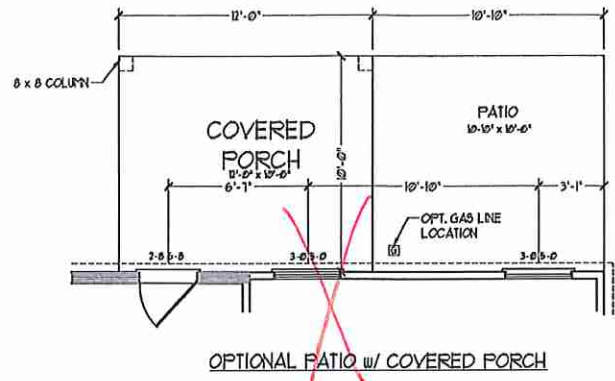
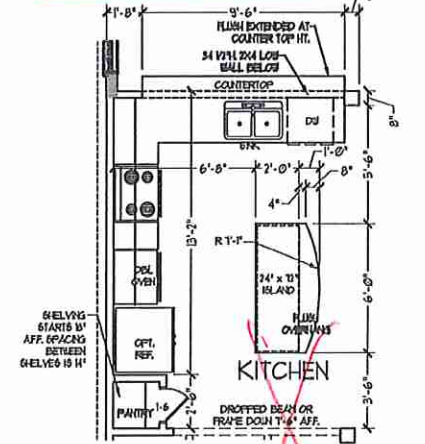
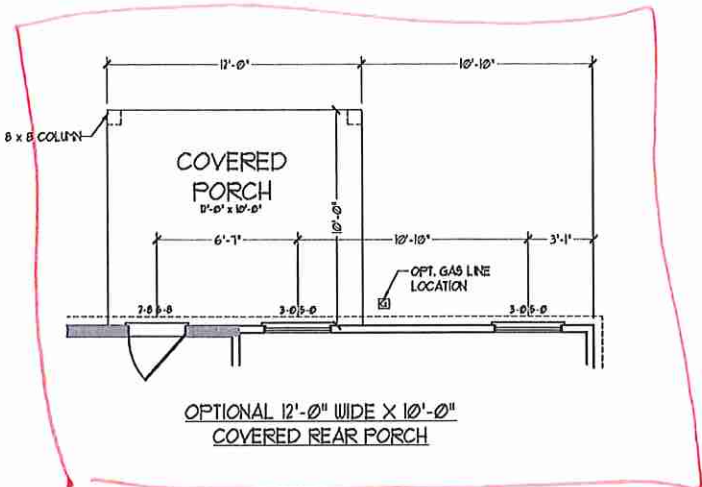
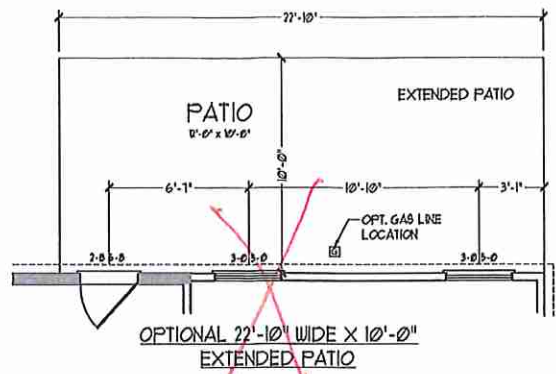
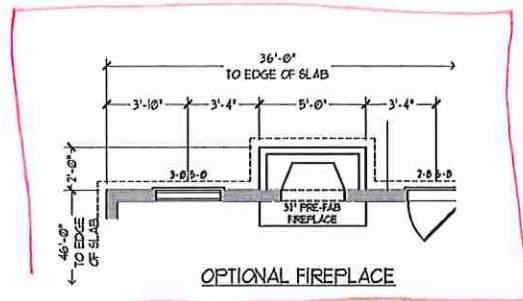
PRICES, PROMOTIONS, INCENTIVES, FEATURES, MATERIALS AND DIMENSIONS ARE SUBJECT TO CHANGE WITHOUT NOTICE. SQUARE FOOTAGE AND DIMENSIONS ARE ESTIMATED AND MAY VARY IN ACTUAL CONSTRUCTION. ACTUAL POSITION OF HOUSES ON LOT AND FLOOR PLANS AND ELEVATION READINGS ARE ARTIST CONCEPTIONS. FLOOR PLANS ARE THE COPYRIGHTED PROPERTY OF H&H HOMES, INC. ANY REPRODUCTION, MODIFICATION, OR ALTERATION OF THIS PLAN IS PROHIBITED. SEE H&H HOMES WEBSITE FOR CURRENT DETAILS. COPYRIGHT © 2019 H&H HOMES

H&H HOMES, INC.  
JORDAN

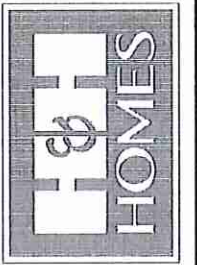
DATE: MARCH 15, 2019  
REV.: MAY 01, 2020  
SCALE: 1/4" = 1'-0"  
DRAWN BY:  
ENGINEERED BY:  
REVIEWED BY:

FIRST FLOOR PLAN  
A-6

J.M.



J.S. THOMPSON  
ENGINEERING, INC.  
665 WAVE AVE, SUITE 104  
RALEIGH, NC 27605  
PHONE: (919) 885-9119  
FAX: (919) 780-9521  
N.C. LICENSE NO.: C1133

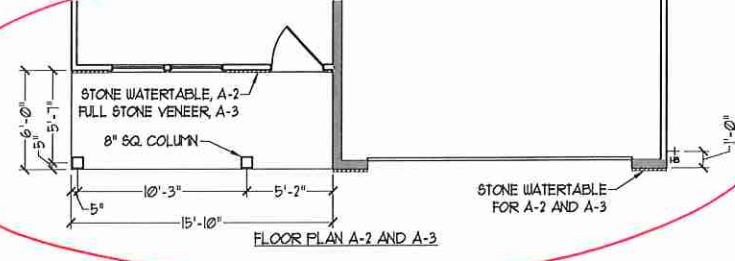
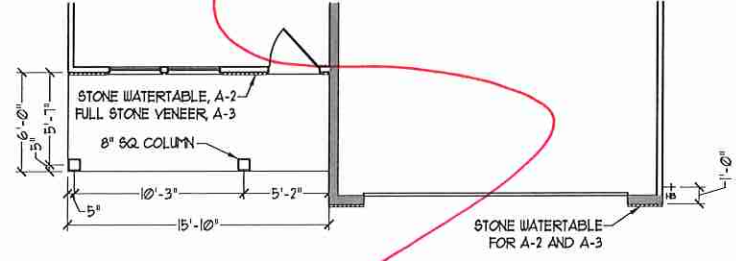
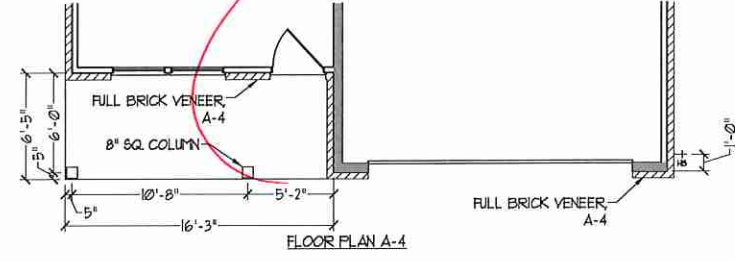
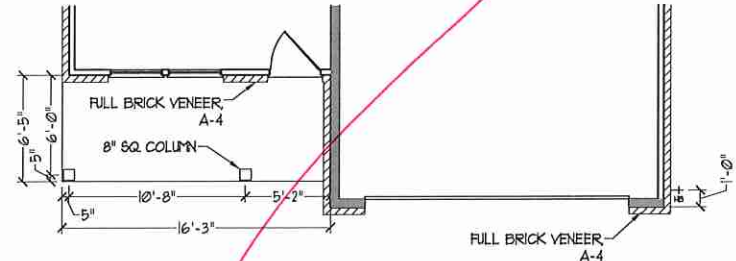
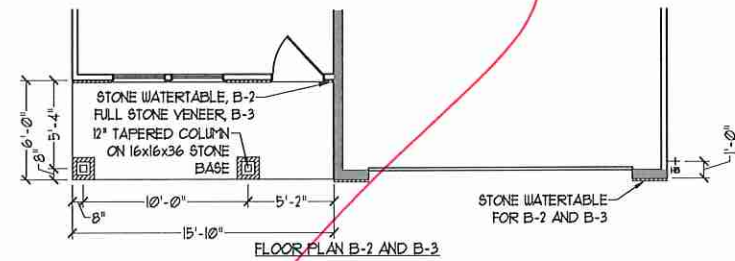
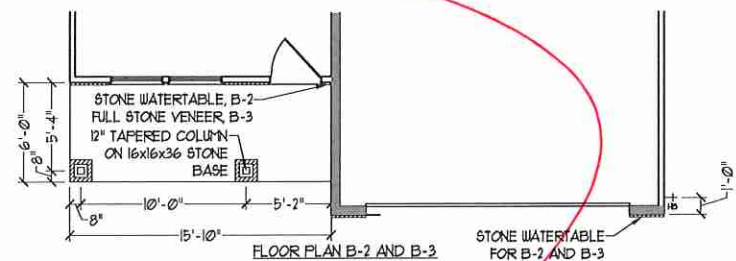
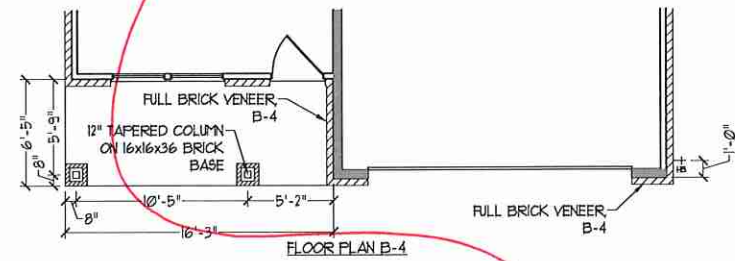
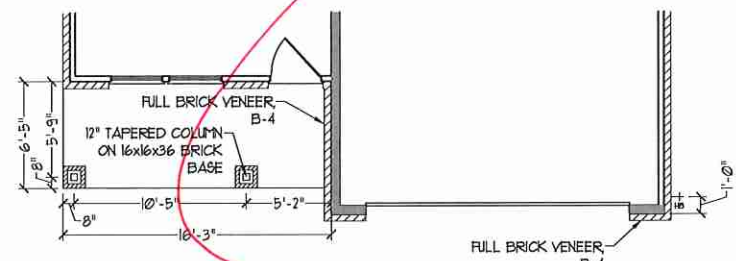
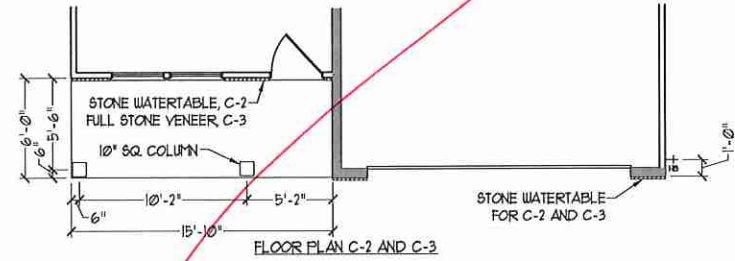
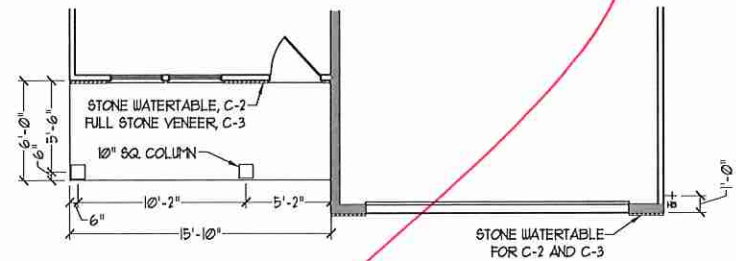
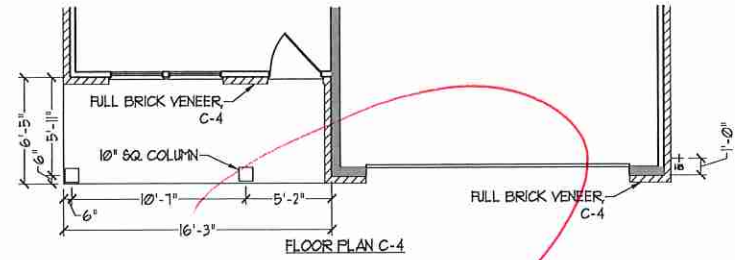
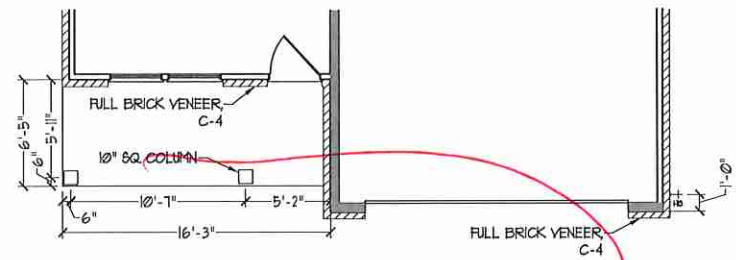


PRICES, PROMOTIONS, INCENTIVES, FEATURES, FINISHES, COORDINATION, ETC., ARE SUBJECT TO CHANGE WITHOUT NOTICE. SQUARE FOOTAGE AND DIMENSIONS ARE ESTIMATED AND MAY VARY IN ACTUAL CONSTRUCTION. ACTUAL POSITION OF HOUSE ON LOT IS NOT GUARANTEED. DIMENSIONS ARE BASED ON LATEST FLOOR PLANS AND ELEVATION REVISIONS ARE LATEST CONCEPTS. FLOOR PLANS ARE THE COPYRIGHTED PROPERTY OF H&H HOMES. ANY USE, REPRODUCTION, ADAPTATION, OR DISPLAY OF THESE PLANS IS STRICTLY PROHIBITED. © 2013 H&H HOMES

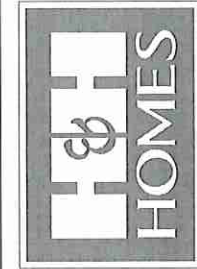
H&H HOMES, INC.  
JORDAN

DATE: MARCH 15, 2019  
REV.: MAY 01, 2020  
SCALE: 1/4" = 1'-0"  
DRAWN BY:  
ENGINEERED BY:  
REVIEWED BY:  
FIRST FLOOR  
OPTIONS w/ OR  
w/o BASEMENT

A-6.1



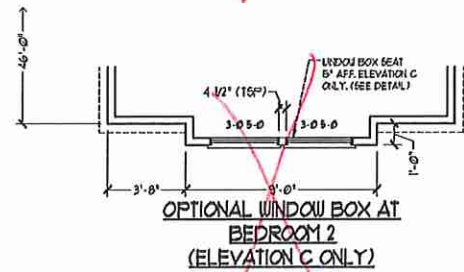
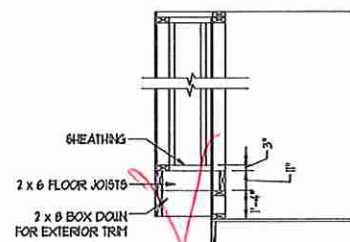
**J.S. THOMPSON**  
ENGINEERING, INC.  
600 WADE AVE., SUITE 104  
RALEIGH, NC 27605  
PHONE: (919) 789-0919  
FAX: (919) 789-9211  
N.C. LICENSE NO. C-1733



PRICES, PROMOTIONS, INCENTIVES, FEATURES, MATERIALS AND DIMENSIONS ARE SUBJECT TO CHANGE WITHOUT NOTICE. SQUARE FOOTAGE AND DIMENSIONS ARE ESTIMATED AND MAY VARY IN ACTUAL CONSTRUCTION. ACTUAL POSITION OF HOUSE ON LOT WILL BE DETERMINED BY THE SITE PLAN AND PLO PLAN. CONCEPTS, FLOOR PLANS ARE THE COPYRIGHTED PROPERTY OF H&H HOMES. ANY USE, REPRODUCTION, ADAPTATION, OR DISPLAY OF THE PLANS IS STRICTLY PROHIBITED. SEE NEW HOME SITES CONSULTANT FOR CURRENT DETAILS. COPYRIGHT © 2019 H&H HOMES

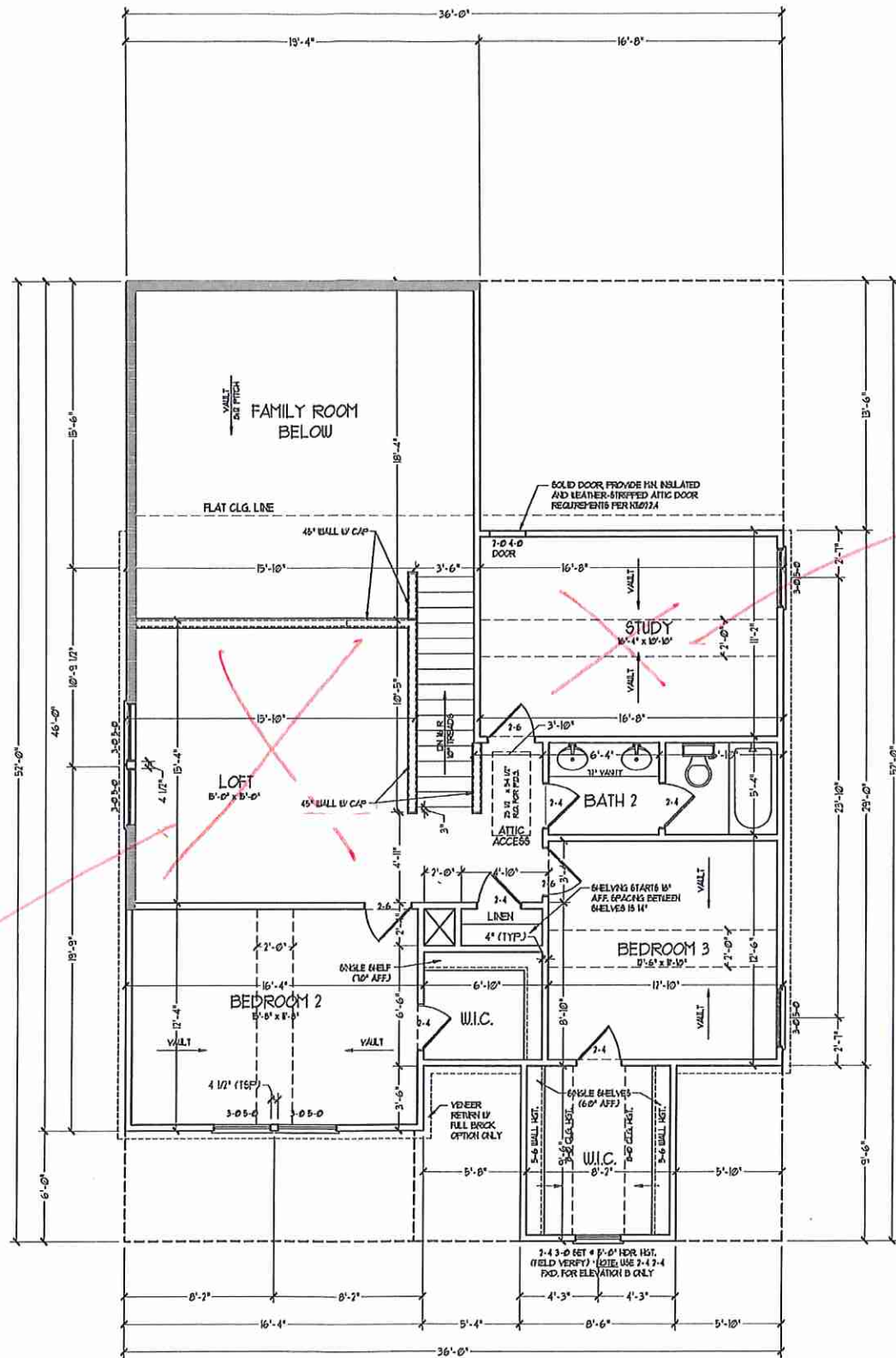
H&H HOMES, INC.  
JORDAN

DATE: MARCH 15, 2019  
REV.: MAY 01, 2020  
SCALE: 1/4"=1'-0"  
DRAWN BY:  
ENGINEERED BY:  
REVIEWED BY:  
FIRST FLOOR  
PARTIAL PLANS  
W/ & W/O  
BASEMENT  
A-6.3



see BR #5

see BR #4



ALL EXTERIOR WALLS AND ATTIC WALLS ARE TO BE 2x4 @ 16" O.C. (TYP). ALL INTERIOR LOAD BEARING WALLS ARE TO BE 2x4 @ 16" O.C. (TYP) AND NON-LOAD BEARING INTERIOR WALLS ARE TO BE 2x4 @ 24" O.C. (TYP).

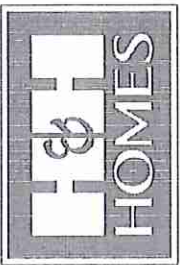
2x6 WALL

SHUCKED WALLS ARE TO BE 2x6 @ 16" O.C. (LOAD BEARING) OR 2x4 @ 24" O.C. (NON-LOAD BEARING) REGARDLESS OF EXTERIOR WALL CONDITION.

PROVIDE MINIMUM INSULATION IN CEILING AND WALLS PER SECTION N 1102J

SEE PARTIAL FLOOR PLAN ON SHEET A-62 FOR CHANGES TO THE EXTERIOR VENEER FOR ALL ELEVATIONS.

J.S. THOMPSON  
ENGINEERING, INC.  
100 WAKEVALE, SUITE 104  
RALEIGH, NC 27605  
PHONE: 919 289-9919  
FAX: 919 289-9911  
N.C. LICENSE NO. C1113



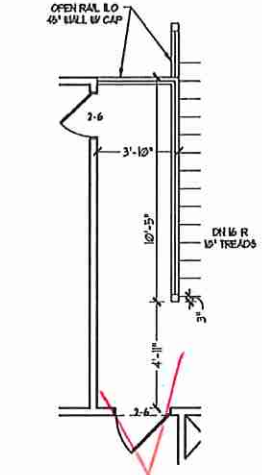
PRICES, PROVISIONS, MATERIALS, FEATURES, MATERIALS AND DIMENSIONS ARE SUBJECT TO CHANGE WITHOUT NOTICE. SQUARE FOOTAGE AND DIMENSIONS ARE ESTIMATED AND MAY VARY IN ACTUAL CONSTRUCTION. THIS PLAN IS A PRELIMINARY DESIGN AND WILL BE SUBJECT TO CHANGE. THIS PLAN IS NOT TO BE USED FOR PERMITS, ELEVATION RECORDS, ARTIST CONCEPTIONS, FLOOR PLANS, ANY USE, REPRODUCTION, OR FOR ANY OTHER PURPOSE. ALL RIGHTS ARE RESERVED. SEE NEW HOME SALES CENTER FOR CURRENT DETAILS. COPYRIGHT © 2019 H&H HOMES

H&H HOMES, INC.  
JORDAN

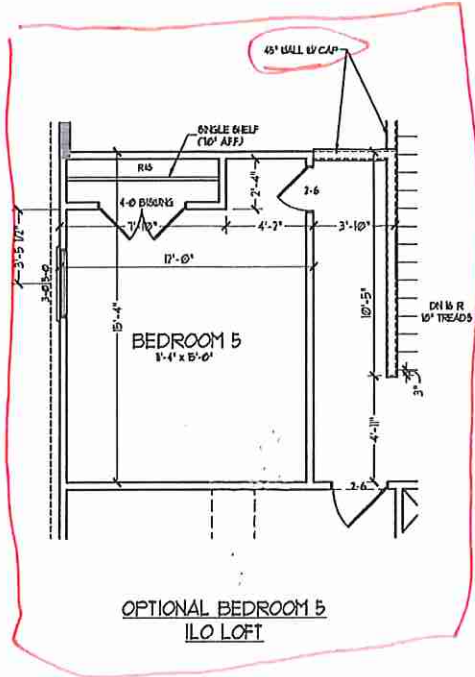
DATE: MARCH 15, 2019  
REV.: MAY 01, 2020  
SCALE: 1/4" = 1'-0"  
DRAWN BY:  
ENGINEERED BY:  
REVIEWED BY:

SECOND FLOOR PLAN  
A-7

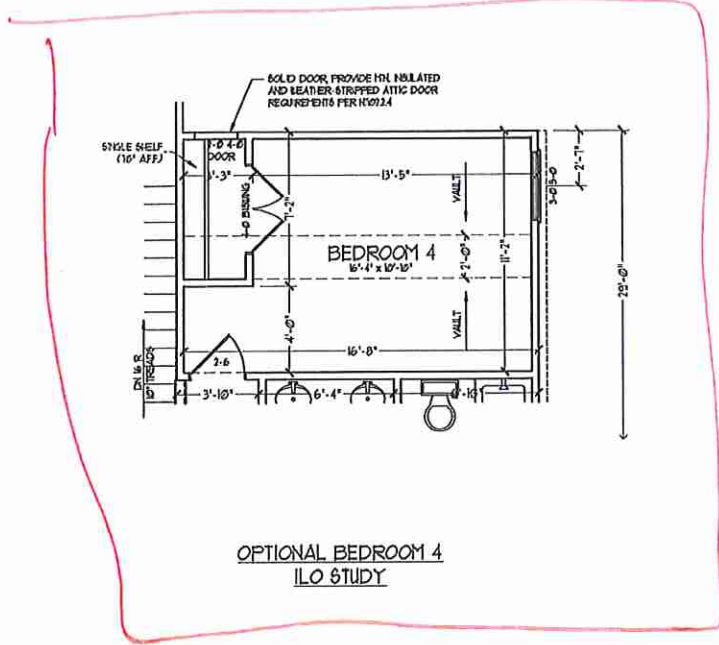
*Handwritten signature*



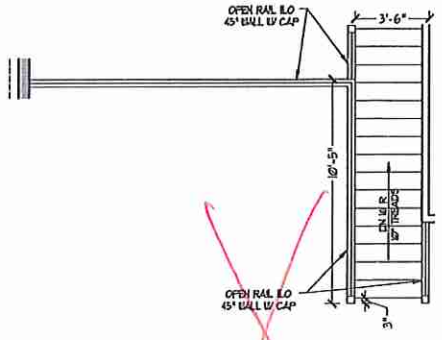
~~OPTIONAL OPEN RAIL ILO  
45° WALL W/ CAP W/  
BEDROOM 5 ILO LOFT~~



OPTIONAL BEDROOM 5  
ILO LOFT

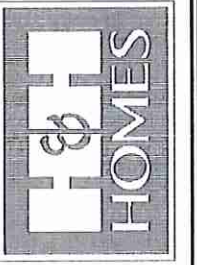


OPTIONAL BEDROOM 4  
ILO STUDY



~~OPEN RAIL ILO 45° WALL  
W/ CAP~~

**J.S. THOMPSON  
ENGINEERING, INC.**  
606 WADEAVE, SUITE 104  
RALEIGH, NC 27605  
PHONE: 919 286-9119  
FAX: 919 286-9221  
N.C. LICENSE NO. C1133



PRICES, PRODUCTIONS, INCENTIVES, FEATURES,  
OPTIONS, FLOOR PLANS, ELEVATIONS, DEVISIONS,  
MATERIALS AND DIMENSIONS ARE SUBJECT TO CHANGE  
WITHOUT NOTICE. SQUARE FOOTAGE AND DIMENSIONS  
ARE ESTIMATED AND MAY VARY IN FACT. ALL FINISHES  
CONSTRUCTION AND ELEVATION RENDERINGS ARE ARTIST  
CONCEPTIONS. FLOOR PLANS ARE THE COPYRIGHTED  
PROPERTY OF H&H HOMES, INC. ALL RIGHTS RESERVED.  
ADAPTATION, OR REPRODUCTION OF THESE DRAWINGS  
FOR OTHER PROJECTS IS STRICTLY PROHIBITED. SEE H&H HOMES SALES CONSULTANT FOR  
CURRENT DETAILS. COPYRIGHT © 2019 H&H HOMES

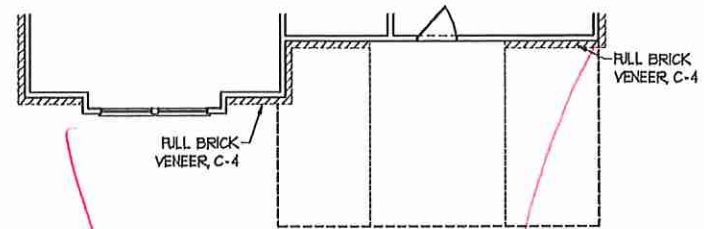
H&H HOMES, INC.  
JORDAN

DATE: MARCH 15, 2019  
REV.: MAY 01, 2020  
SCALE: 1/4" = 1'-0"  
DRAWN BY:  
ENGINEERED BY:  
REVIEWED BY:

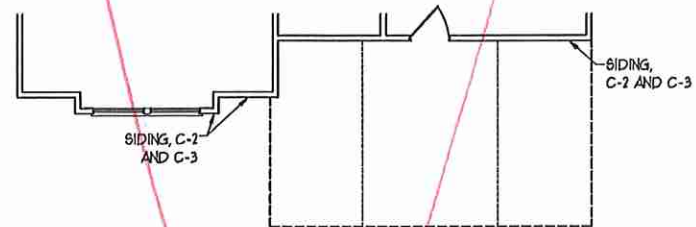
SECOND FLOOR  
OPTIONS  
A-7.1

*gm*

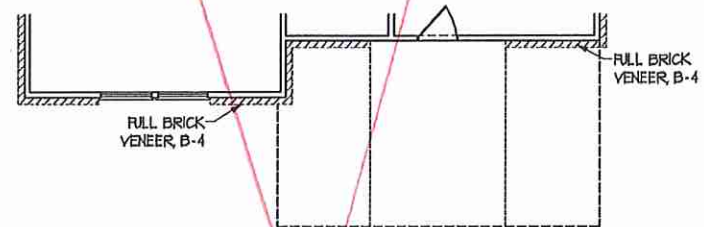




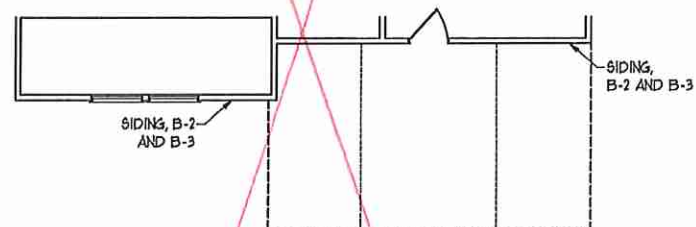
FLOOR PLAN C-4  
(W/ OPTIONAL BASEMENT)



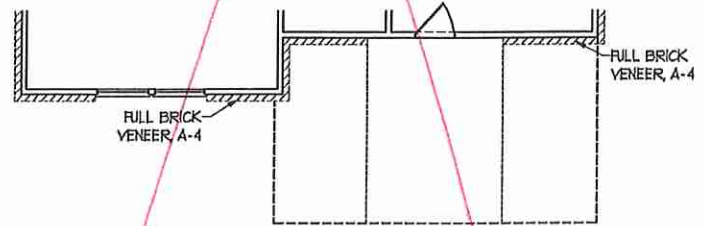
FLOOR PLAN C-2 AND C-3  
(W/ OPTIONAL BASEMENT)



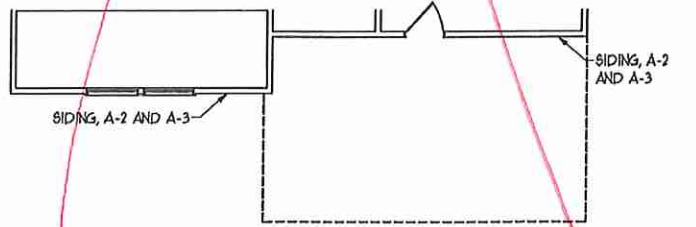
FLOOR PLAN B-4  
(W/ OPTIONAL BASEMENT)



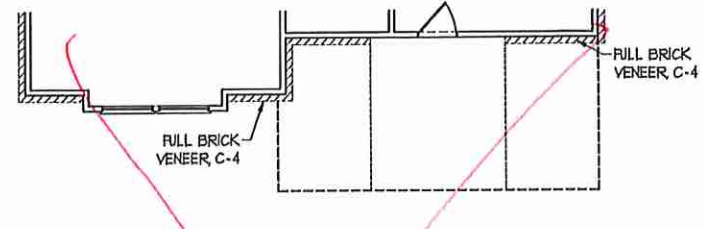
FLOOR PLAN B-2 AND B-3  
(W/ OPTIONAL BASEMENT)



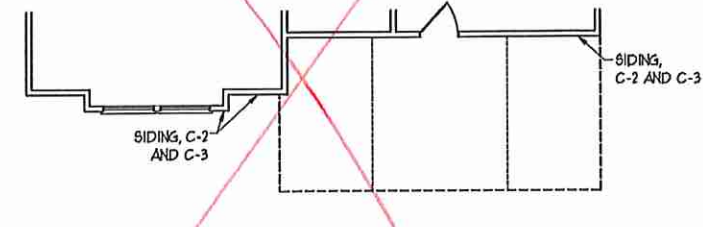
FLOOR PLAN A-4  
(W/ OPTIONAL BASEMENT)



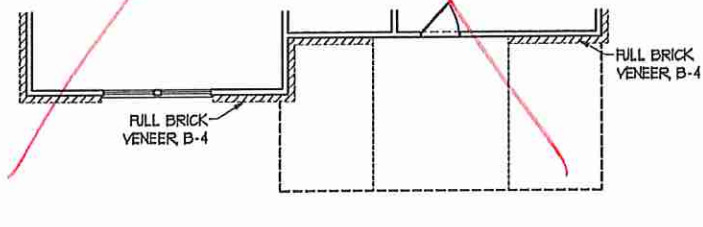
FLOOR PLAN A-2 AND A-3  
(W/ OPTIONAL BASEMENT)



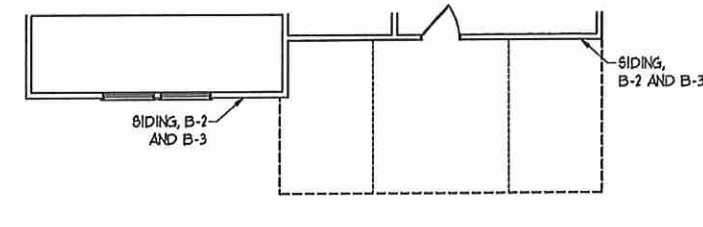
FLOOR PLAN C-4



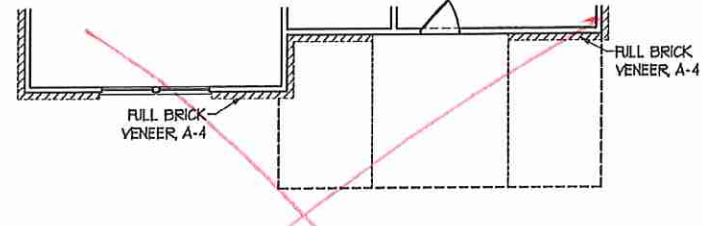
FLOOR PLAN C-2 AND C-3



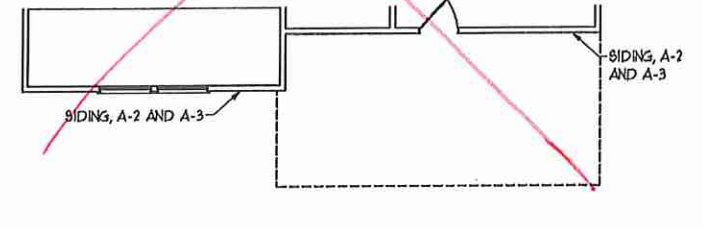
FLOOR PLAN B-4



FLOOR PLAN B-2 AND B-3

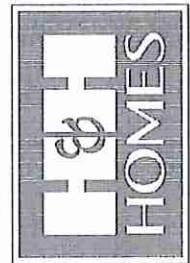


FLOOR PLAN A-4



FLOOR PLAN A-2 AND A-3

**J.S. THOMPSON  
ENGINEERING, INC.**  
66 WADE AVE, SUITE 104  
RALEIGH, NC 27605  
PHONE: (919) 286-9919  
FAX: (919) 780-0921  
N.C. LICENSE NO. C1113

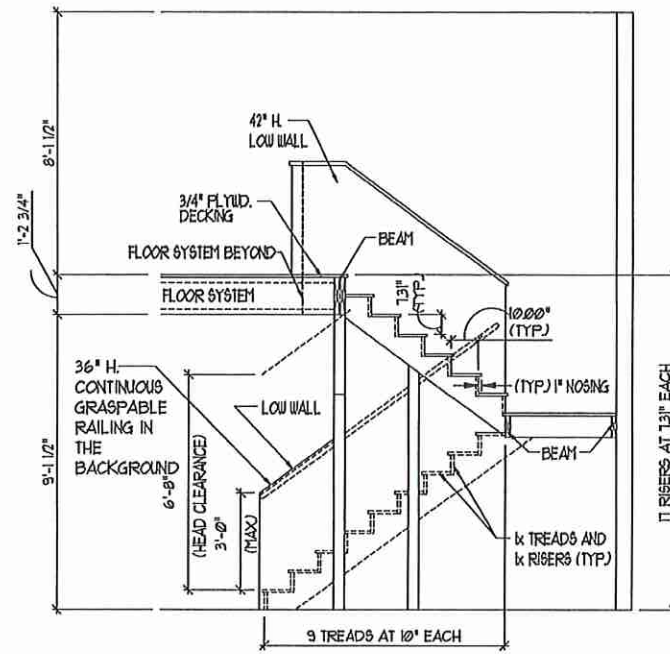


PLEASE, PROVISIONS, INCENTIVES, FEATURES, OPTIONS, FLOOR PLANS, ELEVATIONS, DESIGNS, MATERIALS AND DIMENSIONS ARE SUBJECT TO CHANGE WITHOUT NOTICE. SQUARE FOOTAGE AND DIMENSIONS WILL BE DETERMINED BY THE SITE PLAN AND FLOOR PLAN. CONSTRUCTION, ACTUAL POSITION OF HOUSE ON LOT FLOOR PLANS AND ELEVATION RENDERINGS ARE ARTIST CONCEPTIONS. FLOOR PLANS ARE THE COPYRIGHTED PROPERTY OF H&H HOMES, INC. AND ARE STRICTLY FOR ADAPTATION OR DISPLAY OF THE PLANS IS STRICTLY PROHIBITED. SEE REVENUE SALES CONSULTANT FOR CURRENT DETAILS. COPYRIGHT © 2019 H&H HOMES

**H&H HOMES, INC.**  
**JORDAN**

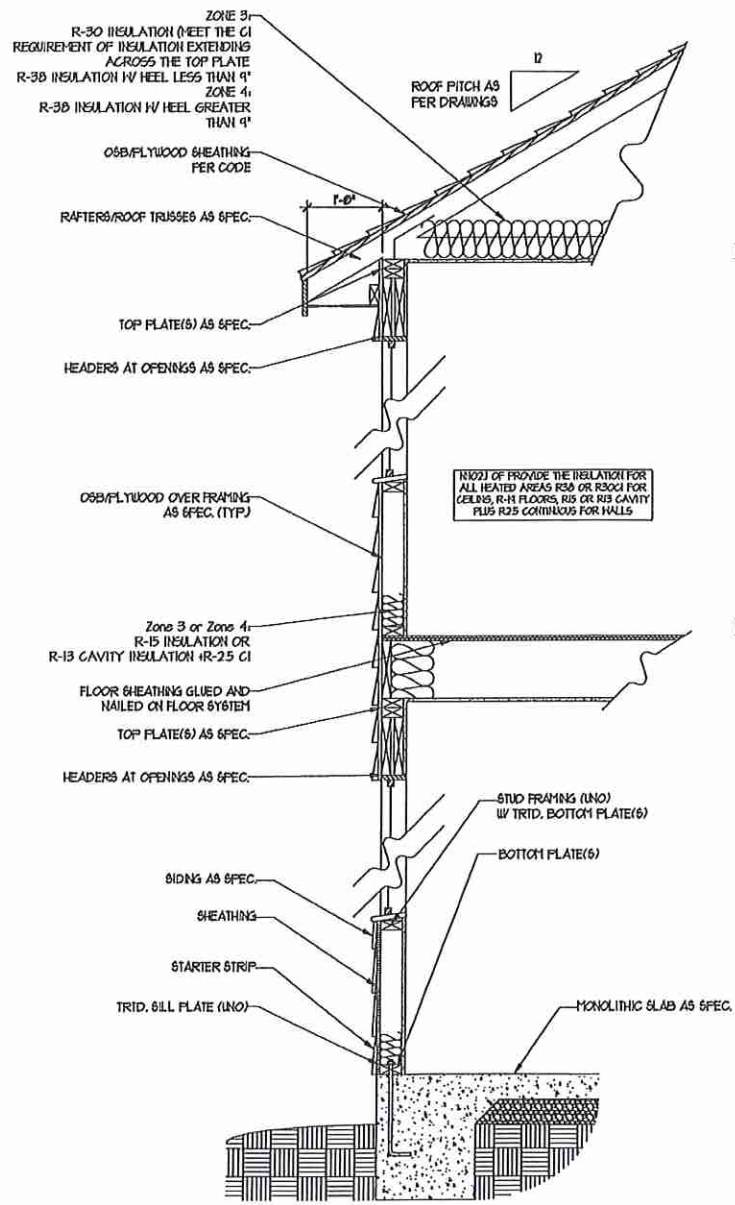
DATE: MARCH 15, 2019  
REV.: MAY 01, 2020  
SCALE: 1/4" = 1'-0"  
DRAWN BY:  
ENGINEERED BY:  
REVIEWED BY:

SECOND FLOOR  
PARTIAL PLANS  
**A-7.2**

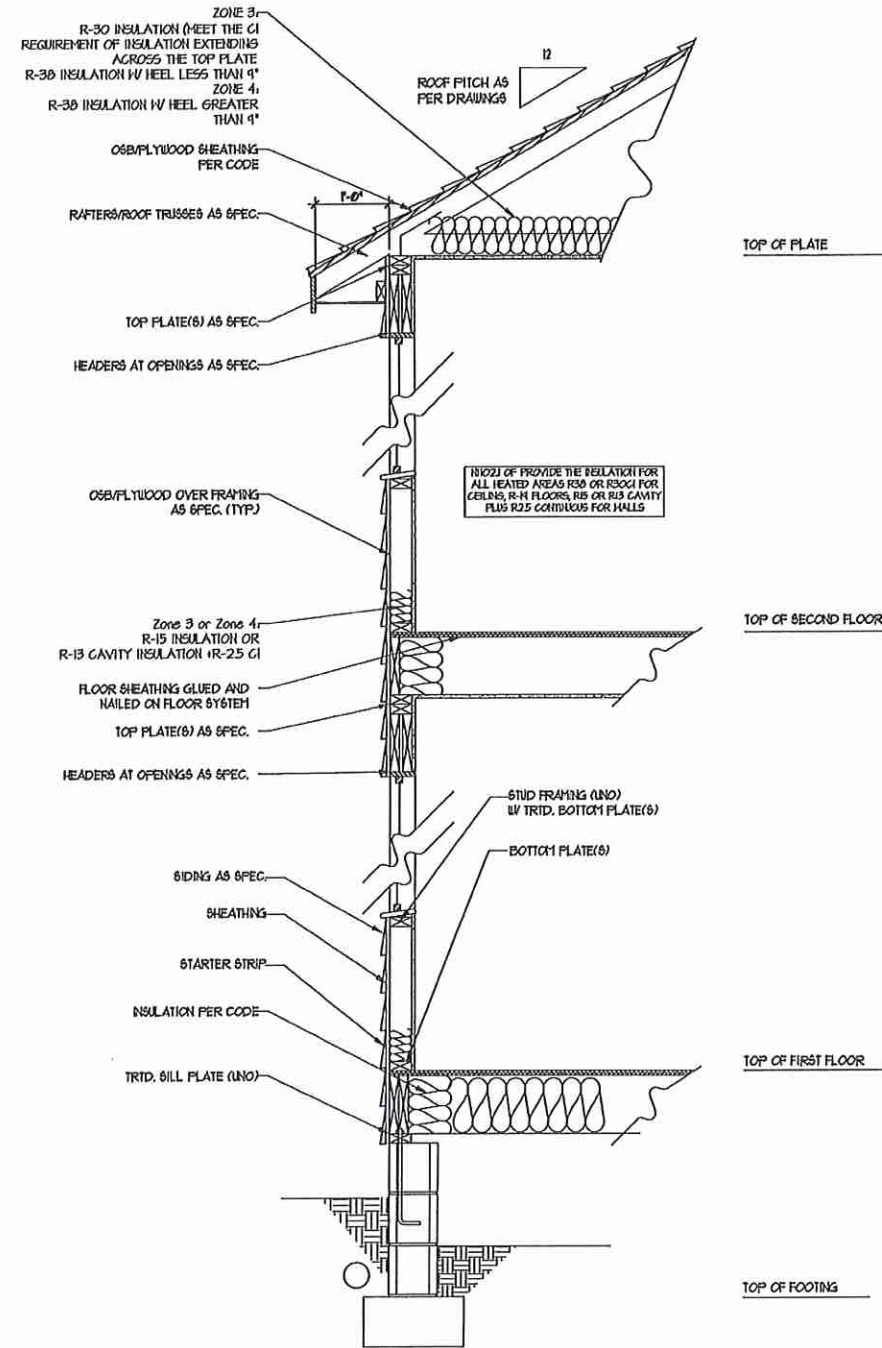


TYPICAL STAIR DETAIL  
(NTS)

STAIR NOTES:  
 BALUS:  
 BALUSTERS SHALL BE SPACED SO THAT A 4" SPHERE CANNOT PASS THROUGH.  
 THE TRIANGULAR OPENINGS FORMED BY THE RISER, TREAD AND BOTTOM RAIL OF A GUARD AT THE OPEN SIDE OF A STAIRWAY ARE PERMITTED TO BE A SUCH A SIZE THAT A SPHERE OF 6 INCHES CANNOT PASS THROUGH.  
 OPENINGS FOR REQUIRED GUARDS ON THE SIDES OF STAIR TREADS SHALL NOT ALLOW A SPHERE 4 3/8 INCHES TO PASS THROUGH.  
 HANDRAILS:  
 HANDRAILS FOR STAIRWAYS SHALL BE CONTINUOUS FOR THE FULL LENGTH OF THE FLIGHT, FROM A POINT DIRECTLY ABOVE THE TOP RISER OF THE FLIGHT TO A POINT DIRECTLY ABOVE THE LOWEST RISER. HANDRAIL ENDS SHALL BE RETURNED OR SHALL TERMINATE IN NEVEL POSTS OR SAFETY TERMINALS. HANDRAILS ADJACENT TO A WALL SHALL HAVE A SPACE OF NOT LESS THAN 1-1/2 INCH BETWEEN THE WALL AND HANDRAIL.  
 CONTINUOUS GRASPABLE HANDRAIL MUST MEET ONE OR TYPE TWO CRITERIA

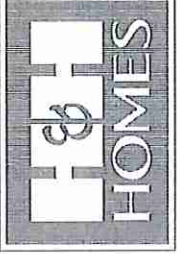


WALL SECTION W/ SLAB  
W/ STD. SIDING SHOWN (NTS)



WALL SECTION W/ CRAWL SPACE  
W/ STD. SIDING SHOWN (NTS)

J.S. THOMPSON  
 ENGINEERING, INC.  
 658 WADE AVE., SUITE 104  
 RALEIGH, NC 27605  
 PHONE: 919 289-9149  
 FAX: 919 289-9221  
 N.C. LICENSE NO. 31133



PRICE, SPECIFICATIONS, MATERIALS, FEATURES, OPTIONS, FINISHES, SCHEDULES, DIMENSIONS, MATERIALS AND DIMENSIONS ARE SUBJECT TO CHANGE WITHOUT NOTICE. SQUARE FOOTAGE AND DIMENSIONS ARE ESTIMATED AND MAY VARY IN ACTUAL CONSTRUCTION. ALL DIMENSIONS ARE TO FACE UNLESS OTHERWISE NOTED. ALL DIMENSIONS SHALL BE DETERMINED BY THE SITE PLAN AND 2-D PLAN. FLOOR PLANS AND ELEVATION RENDERINGS ARE ARTIST CONCEPTS. FLOOR PLANS ARE THE COPYRIGHTED PROPERTY OF H&H HOMES. ALL RIGHTS ARE RESERVED. REPRODUCTION, DISTRIBUTION, OR SALE OF THIS DRAWING IS PROHIBITED. SEE H&H HOMES SALES CONSULTANT FOR CURRENT DETAILS. COPYRIGHT © 2019 H&H HOMES

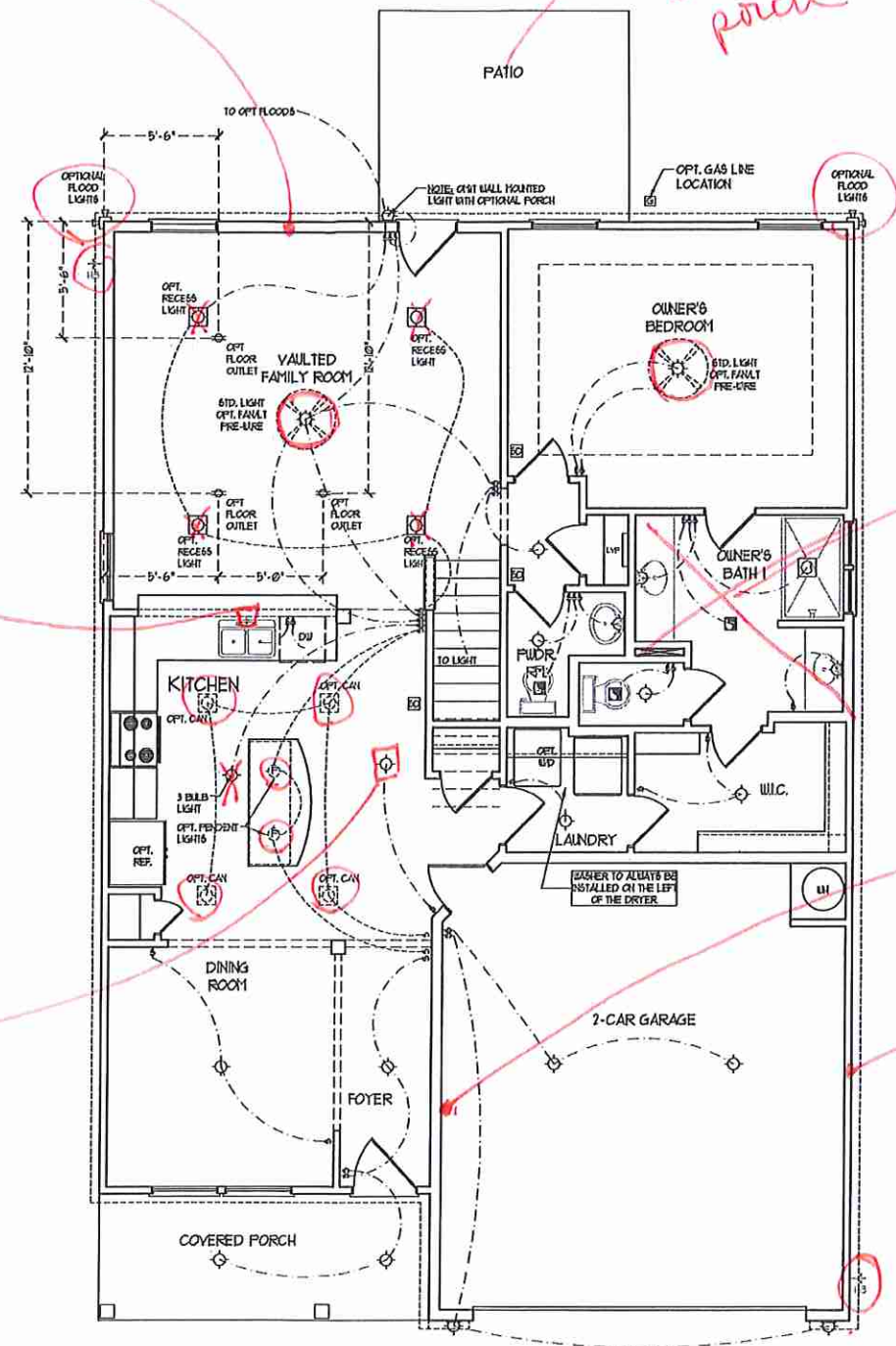
H&H HOMES, INC.  
 JORDAN

DATE: MARCH 15, 2019  
 REV: MAY 01, 2020  
 SCALE: 1/4"=1'-0"  
 DRAWN BY:  
 ENGINEERED BY:  
 REVIEWED BY:

WALL SECTIONS  
 AND STAIR  
 DETAIL  
 AD-1

*see fireplace*

*see covered porch*



**ELECTRICAL LAYOUT NOTES:**

1) BLOCK AND USE FOR ALL CEILING FANS PER PLAN

2) WANTY LIGHTS TO BE SET @ 50" AFF. (TYP)

3) ADDITIONAL EXTERIOR OUTLETS REQUIRED BY CODE TO BE LOCATED BY ELECTRICAL

4) PLACE SWITCHES 8" FROM FRONT ROUGH OPENING

**ELECTRICAL LEGEND**

|  |                                 |
|--|---------------------------------|
|  | 60 V OUTLET                     |
|  | WALL MOUNT LIGHT                |
|  | CEILING MOUNT LIGHT             |
|  | PENDANT LIGHT                   |
|  | RECESSED CAN LIGHT              |
|  | FINN CAN LIGHT                  |
|  | EYEBALL LIGHT                   |
|  | FLUORESCENT LIGHT               |
|  | 3 LAMP, 4' FLUORESCENT LIGHT    |
|  | FLOOD LIGHT                     |
|  | SWITCH                          |
|  | 3-WAY SWITCH                    |
|  | 4-WAY SWITCH                    |
|  | DIFFER SWITCH                   |
|  | COORDINATOR FOR DIFFERENT LOADS |
|  | BREAKER                         |
|  | DOORBELL CHIME                  |
|  | NO V SMOKE DETECTOR             |
|  | CO DETECTOR                     |
|  | EXHAUST FAN                     |
|  | LOW VOLTAGE PANEL               |
|  | CEILING FAN                     |
|  | CEILING FAN W/ LIGHT            |

*Recessed can w/ switch*

*Recessed can I/O flushmount*

*see Owner's Bath # 2*

*Dedicated 110v GFCI @*

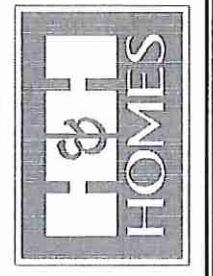
*see side load option*

FIRST FLOOR PLAN  
(A-I, B-I, AND C-I)

*JM*

OKM 075

**J.S. THOMPSON ENGINEERING, INC.**  
650 VALLEY AVE., SUITE 104  
RALEIGH, NC 27605  
PHONE: (919) 286-9119  
FAX: (919) 286-9121  
N.C. LICENSE NO. G-1133

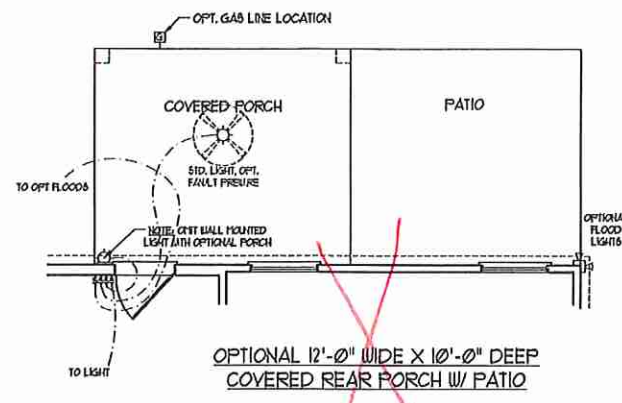
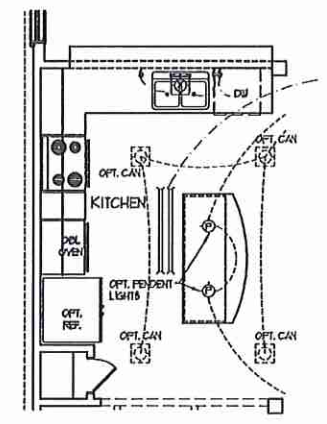
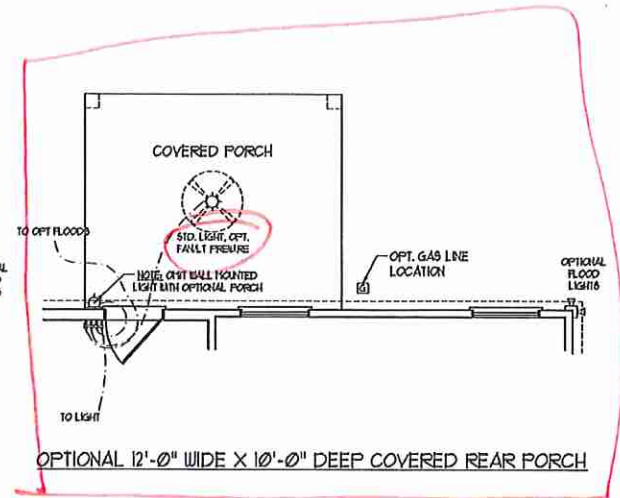
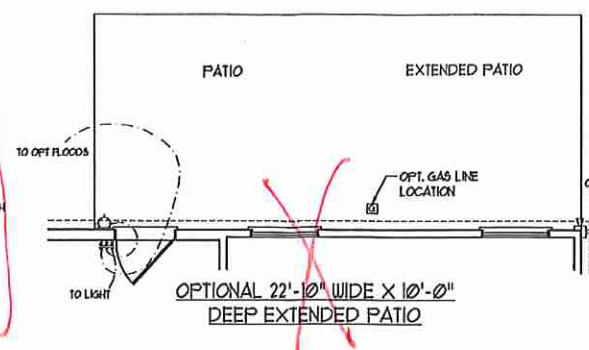
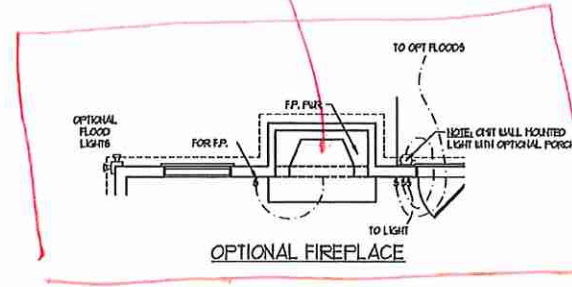


PRICES, FINISHINGS, RESOURCES, SCHEDULES, OPTIONS, & DIMENSIONS ARE SUBJECT TO CHANGE WITHOUT NOTICE. SQUARE FOOTAGE AND DIMENSIONS ARE ESTIMATED AND MAY VARY FROM ACTUAL. CONSTRUCTION SHALL BE DETERMINED BY THE SITE PLAN AND 2-DOT PLAN. FLOOR PLANS AND ELEVATION RENDERINGS ARE ARTIST CONCEPTIONS. FLOOR PLANS ARE THE COPYRIGHTED PROPERTY OF H&H HOMES, INC. ALL RIGHTS RESERVED. ADAPTATION OR DISPLAY OF THE PLANS IS STRICTLY PROHIBITED. SEE NEW HOME SCALES CONSULTANT FOR CURRENT DETAILS. COPYRIGHT © 2019 H&H HOMES

H&H HOMES, INC.  
JORDAN

DATE: MARCH 15, 2019  
REV.: MAY 01, 2020  
SCALE: 1/4"=1'-0"  
DRAWN BY:  
ENGINEERED BY:  
REVIEWED BY:  
FIRST FLOOR ELECTRICAL PLAN  
E-1

110v Outlet  
for TV



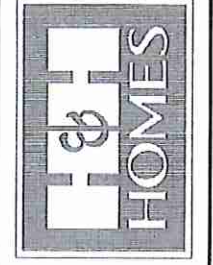
**ELECTRICAL LAYOUT NOTES:**

- 1) BLOCK AND WIRE FOR ALL CEILING FANS PER PLAN.
- 2) VANITY LIGHTS TO BE SET @ 30" AFF. (TYP)
- 3) ADDITIONAL EXTERIOR OUTLETS REQUIRED BY CODE TO BE LOCATED BY ELECTRICAL.
- 4) PLACE SWITCHES 6" FROM TRIM ROUGH OPENINGS.

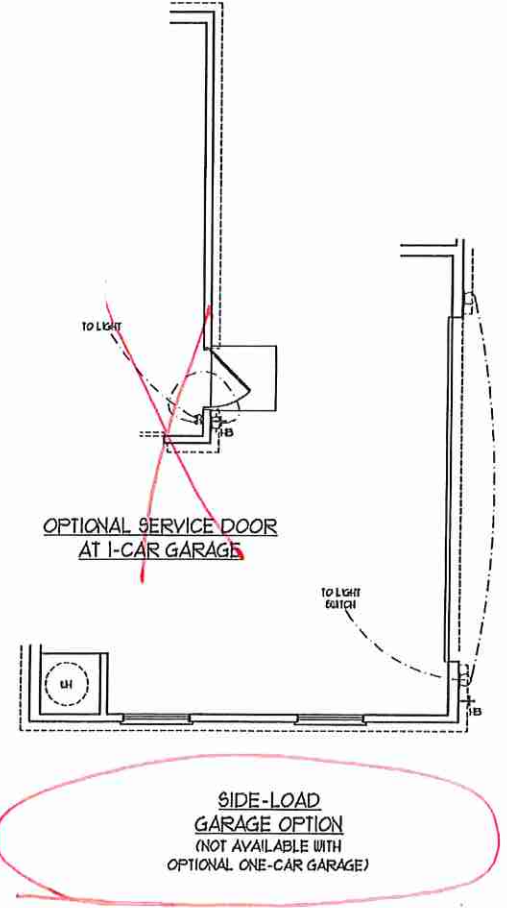
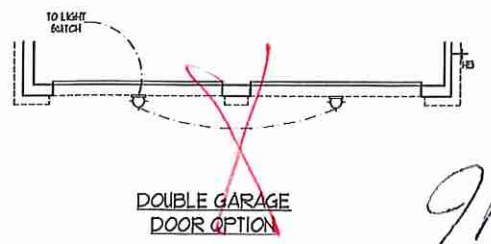
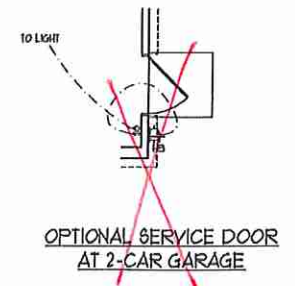
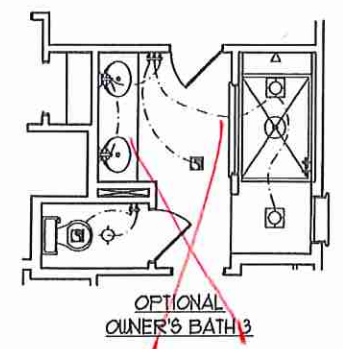
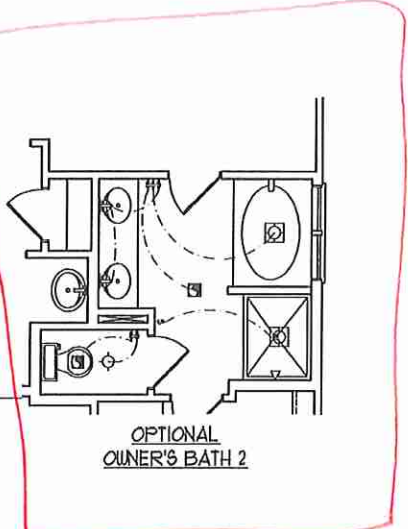
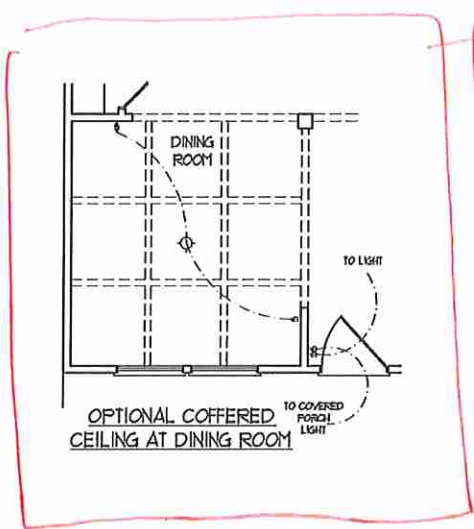
**ELECTRICAL LEGEND**

|  |                              |
|--|------------------------------|
|  | 120 V OUTLET                 |
|  | WALL MOUNT LIGHT             |
|  | CEILING MOUNT LIGHT          |
|  | PENDANT LIGHT                |
|  | RECESSED CAN LIGHT           |
|  | HNI CAN LIGHT                |
|  | EYEBALL LIGHT                |
|  | FLUORESCENT LIGHT            |
|  | 2 LAMP, 4' FLUORESCENT LIGHT |
|  | FLOOD LIGHT                  |
|  | SWITCH                       |
|  | 3-WAY SWITCH                 |
|  | 4-WAY SWITCH                 |
|  | DIMMER SWITCH                |
|  | CONDUIT FOR COMPONENT        |
|  | SPEAKER                      |
|  | DOORBELL CHIME               |
|  | 120 V SMOKE DETECTOR         |
|  | CO DETECTOR                  |
|  | EXHAUST FAN                  |
|  | LOW VOLTAGE PANEL            |
|  | CEILING FAN                  |
|  | CEILING FAN W/ LIGHT         |

**J.S. THOMPSON ENGINEERING INC.**  
 100 WALKER AVE., SUITE 104  
 RALEIGH, NC 27605  
 PHONE: 919 286-9109  
 FAX: 919 286-9221  
 N.C. LICENSE NO. C-1113



PRICES, PRODUCTIONS, MATERIALS, FINISHES, OPTIONS, ROOM SIZES, ELEVATIONS, FINISHES, MATERIALS AND DIMENSIONS ARE SUBJECT TO CHANGE WITHOUT NOTICE. SQUARE FOOTAGE AND DIMENSIONS ARE ESTIMATED AND MAY VARY IN ACTUAL CONSTRUCTION. ALL DIMENSIONS ARE TO FACE UNLESS OTHERWISE NOTED. LOT CONCEPTS, FLOOR PLANS AND ELEVATION RENDERINGS ARE ARTIST CONCEPTIONS. FLOOR PLANS ARE THE COPYRIGHTED PROPERTY OF H&H HOMES, INC. ANY REPRODUCTION, ADAPTATION, OR DISPLAY OF THESE PLANS IS STRICTLY PROHIBITED. SEE NEW HOME SALES CONSULTANT FOR CURRENT DETAILS. COPYRIGHT © 2019 H&H HOMES



9M

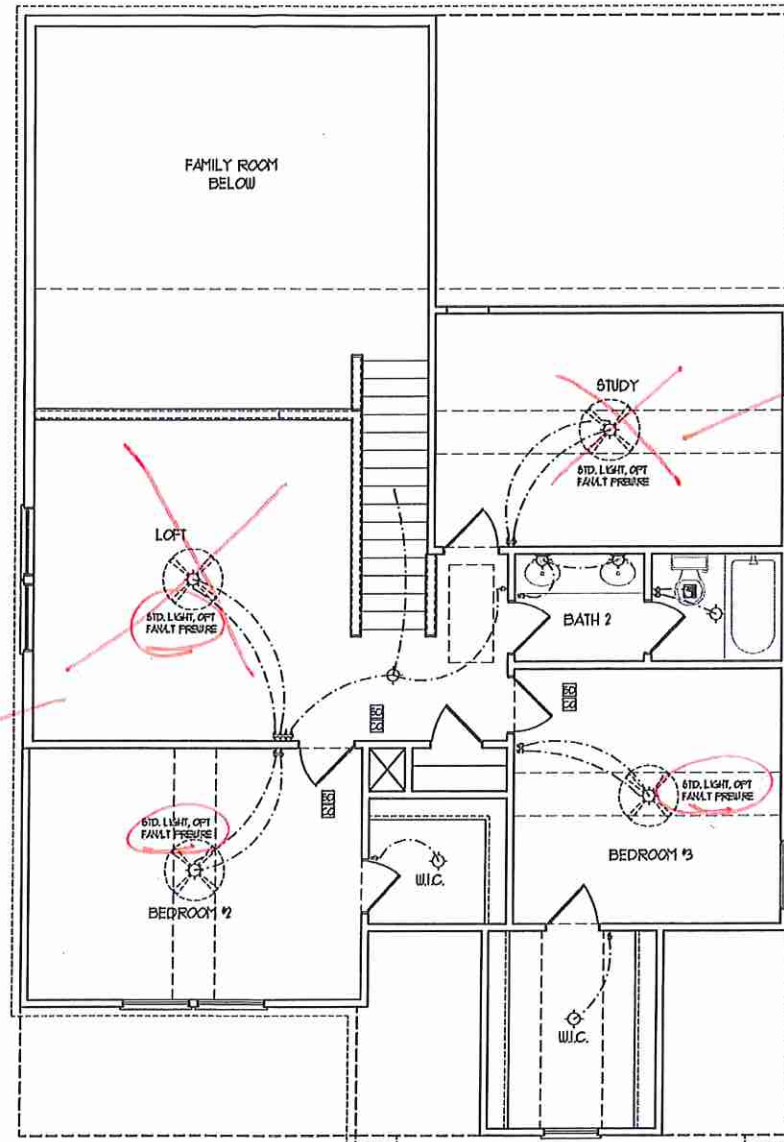
H&H HOMES, INC.  
 JORDAN

DATE: MARCH 15, 2019  
 REV.: MAY 01, 2020  
 SCALE: 1/4"=1'-0"  
 DRAWN BY:  
 ENGINEERED BY:  
 REVIEWED BY:  
 FIRST FLOOR ELECTRICAL OPTIONS  
 E-1.1

OPTIONAL WINDOW BOX AT  
BEDROOM 2  
(ELEVATION C ONLY)

BR. #  
5

see BR. #4



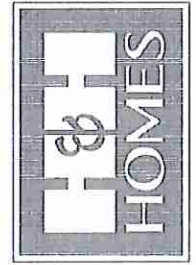
**ELECTRICAL LAYOUT NOTES:**  
 1) BLOCK AND USE FOR ALL  
CEILING FANS PER PLAN  
 2) VANITY LIGHTS TO BE SET  
# 90° AFF. (TYP)  
 3) ADDITIONAL EXTERIOR OUTLETS  
REQUIRED BY CODE TO BE  
LOCATED BY ELECTRICIAN  
 4) PLACE SWITCHES 8" FROM FRONT  
ROUGH OPENINGS

| ELECTRICAL LEGEND |                              |
|-------------------|------------------------------|
|                   | 10 V OUTLET                  |
|                   | WALL MOUNT LIGHT             |
|                   | CEILING MOUNT LIGHT          |
|                   | PENDANT LIGHT                |
|                   | RECESSED CAN LIGHT           |
|                   | HX CAN LIGHT                 |
|                   | EYEBALL LIGHT                |
|                   | FLUORESCENT LIGHT            |
|                   | 7 LAMP, 4' FLUORESCENT LIGHT |
|                   | FLOOD LIGHT                  |
|                   | SWITCH                       |
|                   | 3-WAY SWITCH                 |
|                   | 4-WAY SWITCH                 |
|                   | DIMMER SWITCH                |
|                   | CONDUIT FOR DIFFERENT LEVELS |
|                   | BREAKER                      |
|                   | DOORBELL CHIME               |
|                   | 10 V SMOKE DETECTOR          |
|                   | CO DETECTOR                  |
|                   | EXHAUST FAN                  |
|                   | LOW VOLTAGE PANEL            |
|                   | CEILING FAN                  |
|                   | CEILING FAN W/ LIGHT         |

SECOND FLOOR PLAN  
(A-1, B-1, AND C-1)

*gm*

**J.S. THOMPSON  
ENGINEERING, INC.**  
 606 WALKER AVE., SUITE 104  
 RALEIGH, NC 27605  
 PHONE: (919) 286-9919  
 FAX: (919) 286-9921  
 N.C. LICENSE NO.: C1733

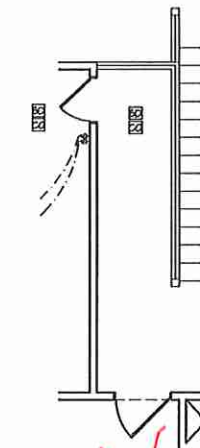


PRICE, PRODUCTIONS, INSURANCES, FEATURES, OPTIONS, FLOOR PLANS, ELEVATIONS, DESIGNS, MATERIALS AND DIMENSIONS ARE SUBJECT TO CHANGE WITHOUT NOTICE. SQUARE FOOTAGE AND DIMENSIONS CONSTRUCTION. ACTUAL POSITION OF HOUSE OR LOT WILL BE DETERMINED BY THE SITE PLAN AND PLOT PLAN. FLOOR PLANS AND ELEVATIONS/DESIGNS ARE ARTIST CONCEPTIONS. FLOOR PLANS ARE THE COPYRIGHTED PROPERTY OF H&H HOMES, INC. AND ARE NOT TO BE ADAPTED, REPRODUCED, COPIED, OR DISPLAYED IN ANY MANNER WITHOUT THE WRITTEN PERMISSION OF H&H HOMES, INC. SEE NEW HOMES SALES CONSULTANT FOR CURRENT DETAILS. COPYRIGHT © 2019 H&H HOMES

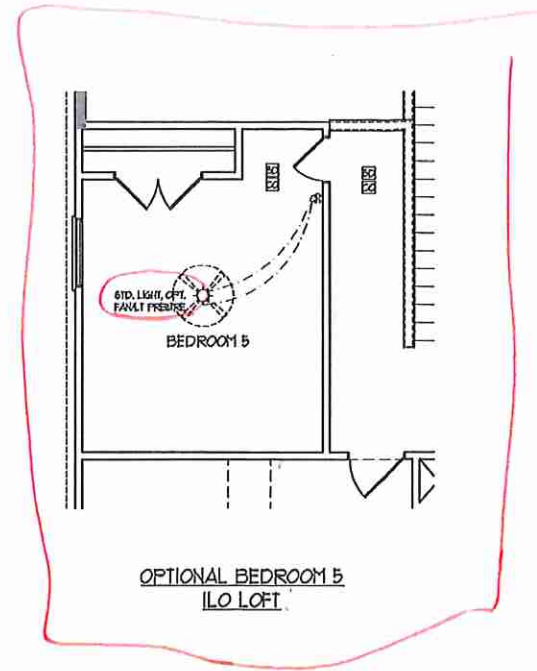
H&H HOMES, INC.  
JORDAN

DATE: MARCH 15, 2019  
 REV.: MAY 01, 2020  
 SCALE: 1/4" = 1'-0"  
 DRAWN BY:  
 ENGINEERED BY:  
 REVIEWED BY:

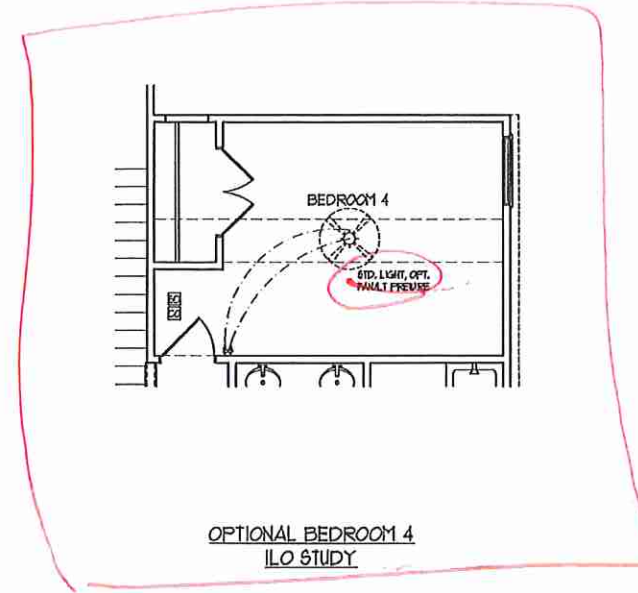
SECOND FLOOR  
ELECTRICAL  
PLAN  
E-2



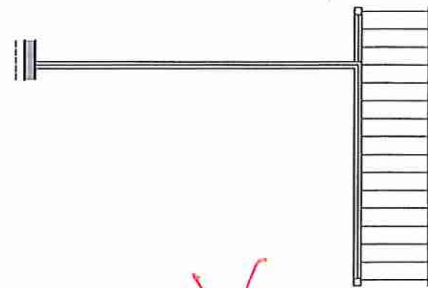
~~OPTIONAL OPEN RAIL ILO  
45° WALL W/ CAP W/  
BEDROOM 5 ILO LOFT~~



OPTIONAL BEDROOM 5  
ILO LOFT



OPTIONAL BEDROOM 4  
ILO STUDY

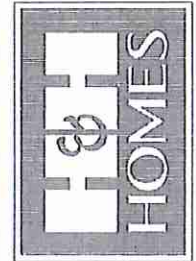


~~OPEN RAIL ILO 45° WALL  
W/ CAP~~

- ELECTRICAL LAYOUT NOTES:**
- 1) BLOCK AND WIRE FOR ALL CEILING FANS PER PLAN
  - 2) WANT LIGHTS TO BE SET 4' 50" AFF. (TYP)
  - 3) ADDITIONAL EXTERIOR OUTLETS REQUIRED BY CODE TO BE LOCATED BY ELECTRICIAN
  - 4) PLACE SWITCHES 6" AWAY FROM ROUGH OPENINGS

| ELECTRICAL LEGEND |                              |
|-------------------|------------------------------|
|                   | 120 V OUTLET                 |
|                   | WALL MOUNT LIGHT             |
|                   | CEILING MOUNT LIGHT          |
|                   | PENDANT LIGHT                |
|                   | RECESSED CAN LIGHT           |
|                   | PHS CAN LIGHT                |
|                   | EYEBALL LIGHT                |
|                   | FLUORESCENT LIGHT            |
|                   | 7 LAMP, 4' FLUORESCENT LIGHT |
|                   | FLOOD LIGHT                  |
|                   | SWITCH                       |
|                   | 3-WAY SWITCH                 |
|                   | 4-WAY SWITCH                 |
|                   | DIMMER SWITCH                |
|                   | CONDUIT FOR DIFFERENT USES   |
|                   | SPEAKER                      |
|                   | DOORBELL CHIME               |
|                   | NO V SMOKE DETECTOR          |
|                   | CO DETECTOR                  |
|                   | EXHAUST FAN                  |
|                   | LOW VOLTAGE PANEL            |
|                   | CEILING FAN                  |
|                   | CEILING FAN W/ LIGHT         |

**J.S. THOMPSON  
ENGINEERING, INC.**  
600 W. VALE AVE., SUITE 104  
RALEIGH, NC 27605  
PHONE: (919) 286-0919  
FAX: (919) 286-0921  
N.C. LICENSE NO. C4133



THESE PROVISIONS, INCENTIVES, FEES, PENALTIES, AND OTHER FLOOR PLANS ARE SUBJECT TO CHANGE WITHOUT NOTICE. SQUARE FOOTAGE AND DIMENSIONS CONSTRUCTION. ACTUAL POSITIONS OF WALLS, CEILING FLOOR PLANS AND ELEVATION DIMENSIONS ARE ARTIST CONCEPTIONS. FLOOR PLANS ARE THE COPYRIGHTED PROPERTY OF H&H HOMES, INC. ALL RIGHTS RESERVED. ADAPTATION, REPRODUCTION, OR DISSEMINATION OF THESE PLANS WITHOUT THE WRITTEN PERMISSION OF H&H HOMES IS STRICTLY PROHIBITED. SEE NEW HOME SALES CONSULTANT FOR CURRENT DETAILS. COPYRIGHT © 2019 H&H HOMES

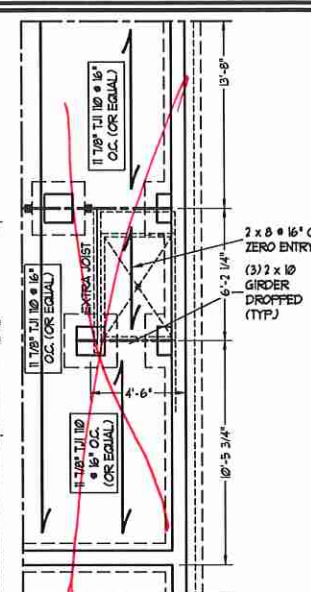
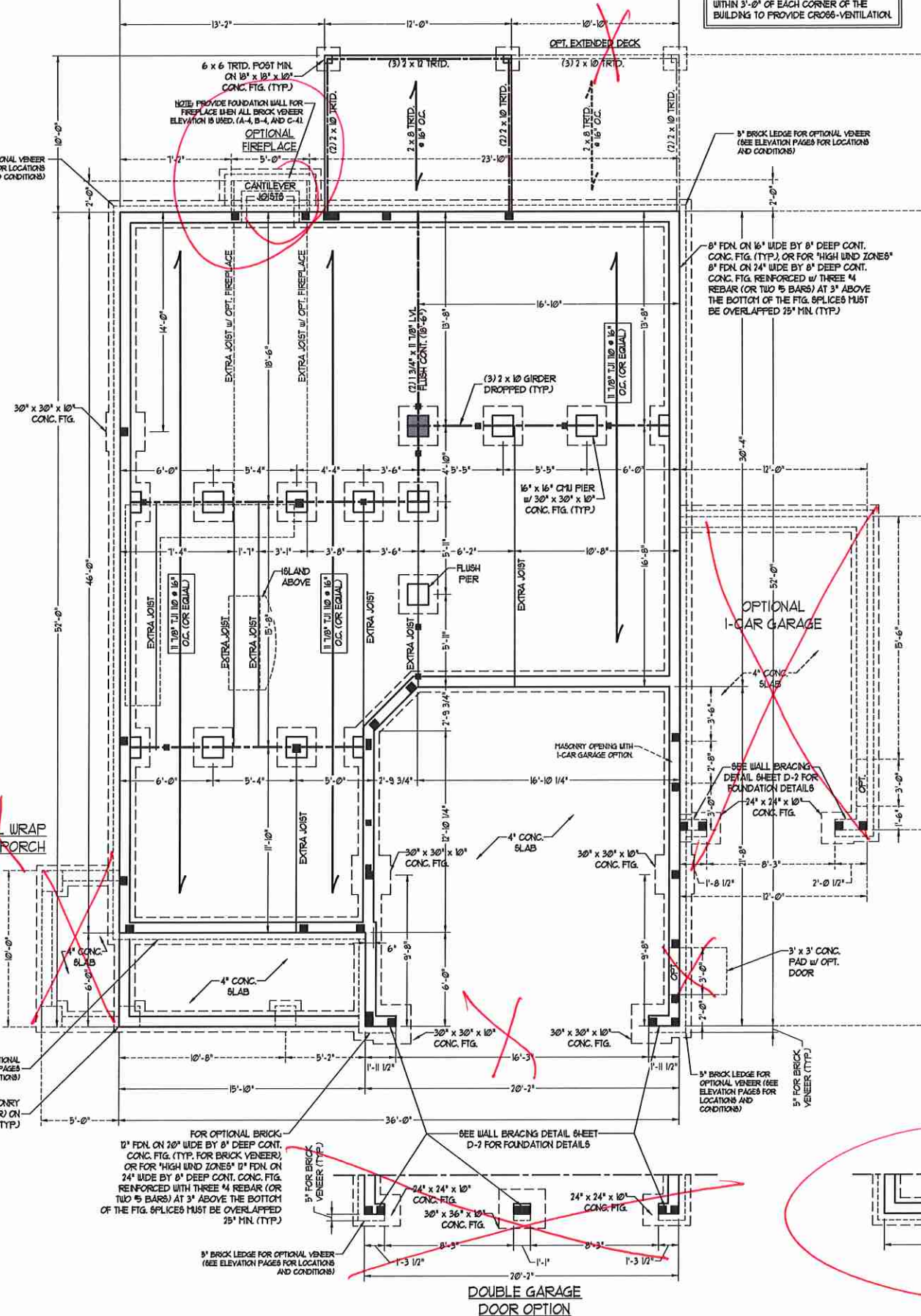
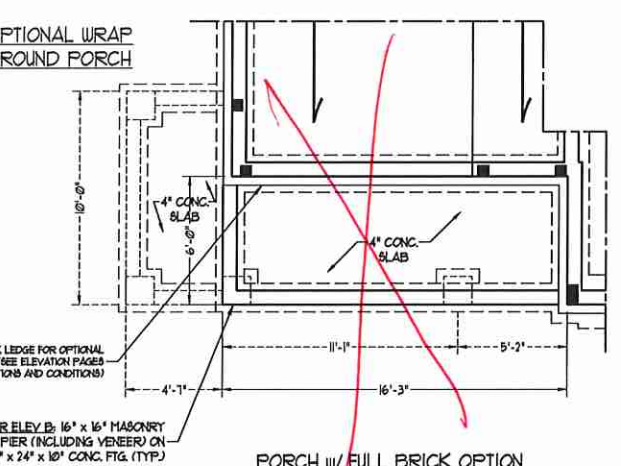
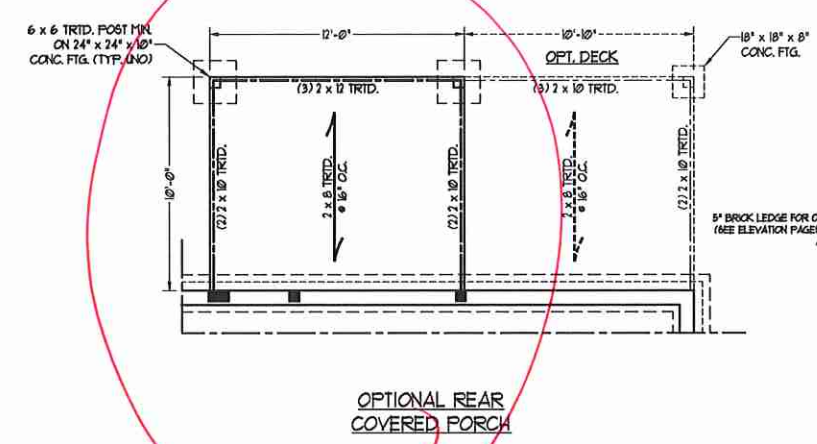
H&H HOMES, INC.  
JORDAN

DATE: MARCH 15, 2019  
REV.: MAY 01, 2020  
SCALE: 1/4" = 1'-0"  
DRAWN BY:  
ENGINEERED BY:  
REVIEWED BY:

SECOND FLOOR  
ELECTRICAL  
OPTIONS

E-2.1

*JM*



SEAL 33736

MATTHEW G. STROTHER

ENGINEER

11/6/2020

**50 MPH ULTIMATE DESIGN WIND SPEED NOTES FOR LESS THAN 30' MEAN ROOF HEIGHT:**

- ENGINEER'S SEAL APPLIES ONLY TO STRUCTURAL COMPONENTS. ENGINEER'S SEAL DOES NOT CERTIFY DIMENSIONAL ACCURACY OR ARCHITECTURAL LAYOUT INCLUDING ROOF SYSTEM.
- STRUCTURAL DESIGN PER NORTH CAROLINA RESIDENTIAL CODE, 2018 EDITION WITH SPECIAL CONSIDERATION TO CHAPTER 46 ("HIGH WIND ZONES") FOR 50 MPH WINDS.
- ENGINEER IS TO PROVIDE FRAMING CONNECTIONS AS REQUIRED BY CHAPTER 46 ("HIGH WIND ZONES") FOR 50 MPH WINDS OF THE NORTH CAROLINA RESIDENTIAL CODE, 2018 EDITION.
- FOUNDATION ANCHORAGE TO COMPLY WITH SECTION 456.4 OF THE NORTH CAROLINA RESIDENTIAL CODE, 2018 EDITION.
- MEAN ROOF HEIGHT IS LESS THAN 30 FEET.
- WALL CLADDING DESIGNED FOR 4.3 PSF AND 18 PSF (+/-) INDICATE POSITIVE / NEGATIVE PRESSURE (TYP.).
- ROOF CLADDING DESIGNED FOR 42.3 PSF AND -38 PSF FOR ROOF PITCHES 1/2 TO 2/12 AND 40 PSF AND -36 PSF FOR ROOF PITCHES 2/12 TO 1/12.
- 1/4" OSB SHEATHING IS REQUIRED ON ALL EXTERIOR WALLS.
- WALLS TO BE BRACED IN ACCORDANCE WITH SECTION 456.4 OF THE NORTH CAROLINA RESIDENTIAL CODE, 2018 EDITION AND AS NOTED ON PLANS.
- ENERGY EFFICIENCY COMPLIANCE AND INSULATION VALUES OF THE BUILDING TO BE IN ACCORDANCE WITH CHAPTER 8 OF THE NRC, 2018 EDITION.
- REFER TO NOTES AND DETAIL SHEETS FOR ADDITIONAL STRUCTURAL INFORMATION.

**20 MPH ULTIMATE DESIGN WIND SPEED NOTES FOR LESS THAN 30' MEAN ROOF HEIGHT:**

- ENGINEER'S SEAL APPLIES ONLY TO STRUCTURAL COMPONENTS. ENGINEER'S SEAL DOES NOT CERTIFY DIMENSIONAL ACCURACY OR ARCHITECTURAL LAYOUT INCLUDING ROOF SYSTEM.
- STRUCTURAL DESIGN PER NORTH CAROLINA RESIDENTIAL CODE, 2018 EDITION.
- INSTALL 1/2" ANCHOR BOLTS 6'-0" O.C. AND WITHIN 1'-0" FROM END OF EACH CORNER. ANCHOR BOLTS MUST EXTEND A MINIMUM OF 1" INTO MASONRY OR CONCRETE. LOCATE BOLT WITH MIDDLE THIRD OF PLATE WIDTH.
- MEAN ROOF HEIGHT IS LESS THAN 30 FEET.
- EXTERIOR WALLS DESIGNED FOR 50 MPH WINDS.
- WALL CLADDING DESIGNED FOR 4.3 PSF AND -38 PSF (+/-) INDICATE POSITIVE / NEGATIVE PRESSURE (TYP.).
- ROOF CLADDING DESIGNED FOR 44.3 PSF AND -38 PSF FOR ROOF PITCHES 1/2 TO 2/12 AND 40 PSF AND -36 PSF FOR ROOF PITCHES 2/12 TO 1/12.
- INSTALL 1/4" OSB SHEATHING ON ALL EXTERIOR WALLS OF ALL STORES IN ACCORDANCE WITH SECTION 456.4 OF THE NRC, 2018 EDITION. SEE THE WALL BRACING NOTES AND DETAIL SHEET FOR MORE INFORMATION.
- ENERGY EFFICIENCY COMPLIANCE AND INSULATION VALUES OF THE BUILDING TO BE IN ACCORDANCE WITH CHAPTER 8 OF THE NRC, 2018 EDITION.
- REFER TO NOTES AND DETAIL SHEETS FOR ADDITIONAL STRUCTURAL INFORMATION.

**STRUCTURAL NOTES:**

- ALL FRAMING LUMBER TO BE #2 SFF (INO). ALL TREATED LUMBER TO BE #1 SFF (INO).
- INSTALL AN EXTRA OR DOUBLE JOIST UNDER WALLS PARALLEL TO FLOOR JOISTS WHERE NOTED ON THE PLANS.
- SQUARES DENOTE POINT LOADS WHICH REQUIRE SOLID BLOCKING TO GIRDER OR FOUNDATION.
- SHADED PIERS TO BE FILLED SOLID.
- INSTALL LADDER WIRE @ 16" O.C. TO SECURE MULTIPLE U-TIE FOUNDATION WALLS TOGETHER.
- REFER TO NOTES AND DETAIL SHEETS FOR ADDITIONAL STRUCTURAL INFORMATION.

**J.S. THOMPSON ENGINEERING, INC.**

606 WADE AVE., SUITE 104 RALEIGH, NC 27605

PHONE: (919) 789-9919 FAX: (919) 789-9921

N.C. LICENSE NO.: C1733

SEAL 33736

MATTHEW G. STROTHER

ENGINEER

11/6/2020

JORDAN H&H HOMES, INC.

DATE: NOVEMBER 5, 2020

SCALE: 1/4" = 1'-0"

DRAWN BY: RENAISSANCE RESIDENTIAL DESIGN

ENGINEERED BY: WFB

SHEET 3 OF 10

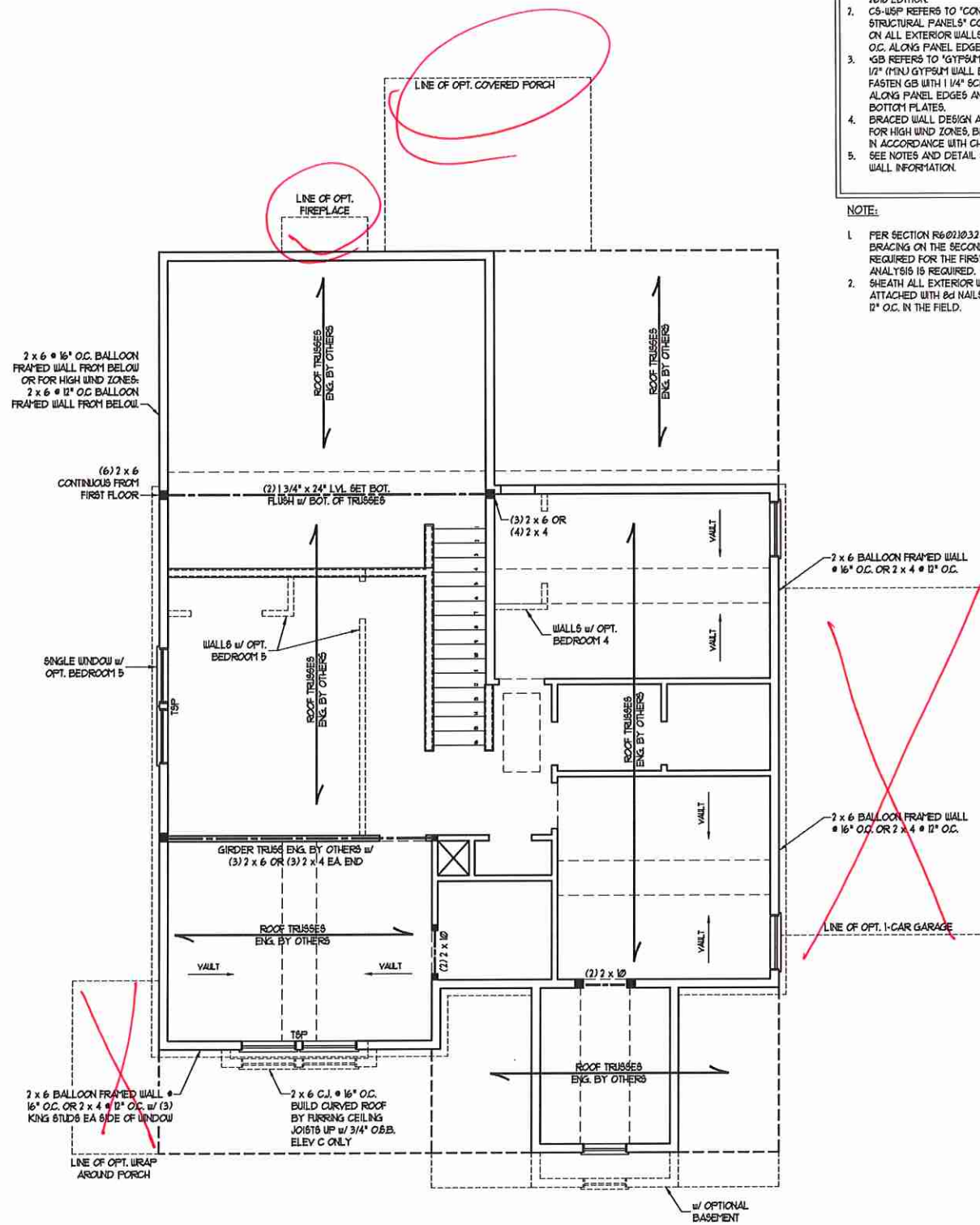
S1.3

CRAWL FOUNDATION PLAN









**BRACED WALL DESIGN NOTES:**

- BRACED WALL DESIGN PER SECTION R60210 OF THE NCRC 2018 EDITION.
- C9-USEP REFERS TO 'CONTINUOUS SHEATHING - WOOD STRUCTURAL PANELS' CONTRACTOR IS TO INSTALL 1/8" OSB ON ALL EXTERIOR WALLS ATTACHED w/ 8d NAILS SPACED 6" O.C. ALONG PANEL EDGES AND 12" O.C. IN THE FIELD.
- GB REFERS TO 'GYPSUM BOARD' CONTRACTOR IS TO INSTALL 1/2" (MIN) GYPSUM WALL BOARD WHERE NOTED ON THE PLANS. FASTEN GB WITH 1 1/4" SCREWS OR 1 5/8" NAILS SPACED 1" O.C. ALONG PANEL EDGES AND IN THE FIELD INCLUDING TOP AND BOTTOM FLATES.
- BRACED WALL DESIGN APPLIED IN WIND ZONES UP TO 130 MPH. FOR HIGH WIND ZONES, BRACE WALLS ARE TO BE CONSTRUCTED IN ACCORDANCE WITH CHAPTER 45 OF THE NCRC 2018 EDITION.
- SEE NOTES AND DETAIL SHEETS FOR ADDITIONAL BRACED WALL INFORMATION.

**NOTE:**

- PER SECTION R60210.3.2 OF THE 2018 NCRC, THE AMOUNT OF BRACING ON THE SECOND FLOOR EXCEEDS THE AMOUNT REQUIRED FOR THE FIRST FLOOR AND NO BRACED WALL ANALYSIS IS REQUIRED.
- SHEATH ALL EXTERIOR WALLS WITH 1/8" OSB SHEATHING ATTACHED WITH 8d NAILS AT 6" O.C. ALONG PANEL EDGES AND 12" O.C. IN THE FIELD.

**NOTE: ALL EXTERIOR WALLS AND ATTIC WALLS ARE TO BE 2 x 6 @ 16" O.C. (UNO). 2 x 4 @ 16" O.C. EXTERIOR WALLS MAY BE CONSTRUCTED IN LIEU OF 2 x 6 WALLS (UNO). ALL INTERIOR LOAD BEARING WALLS ARE TO BE 2 x 4 @ 16" O.C. (UNO) AND NON-LOAD BEARING INTERIOR WALLS ARE TO BE 2 x 4 @ 24" O.C. (UNO).**

**LINTEL SCHEDULE FOR BRICK/NATURAL STONE SUPPORT**

| LENGTH (FT.)  | SIZE OF LINTEL         |
|---------------|------------------------|
| UP TO 4 FT.   | L 3 1/2 x 3 1/2 x 1/4  |
| 4-8           | L 5 x 3 1/2 x 5/16 LLV |
| 8 AND GREATER | L 6 x 4 x 5/16 LLV     |

**BRICK SUPPORT NOTES:**

- LINTEL SCHEDULE APPLIES TO ALL OPENINGS IN BRICK VENEER (UNO). SEE ARCH DWGS. FOR SIZE AND LOCATION OF OPENINGS.
- (LLV) = LONG LEG VERTICAL
- LENGTH = CLEAR OPENING
- EMBED ALL ANGLE IRONS MIN. 4" EACH SIDE INTO VENEER TO PROVIDE BEARING.
- FOR ALL HEADERS 8'-0" AND GREATER IN LENGTH, ATTACH STEEL ANGLE TO HEADER W/ 1/2" LAG SCREWS @ 12" O.C. STAGGERED.
- FOR ALL BRICK SUPPORT @ ROOF LINES, FASTEN (2) 2 x 10 BLOCKING BETWEEN STUDS w/ (4) Dd NAILS PER PLY. FASTEN A 6" x 4" x 5/16" STEEL ANGLE TO (2) 2 x 10 BLOCKING w/ (2) 1/2" LAG SCREWS @ 12" O.C. STAGGERED. SEE SECTION R103.8.2 OF THE 2018 NCRC FOR ADDITIONAL BRICK SUPPORT INFORMATION. PRECAST REINFORCED CONCRETE LINTELS ENGINEERED BY OTHERS MAY BE USED IN LIEU OF STEEL LINTELS.

**STRUCTURAL NOTES:**

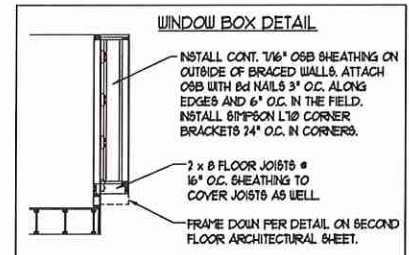
- ALL FRAMING LUMBER TO BE SPF #2 (UNO). ALL TREATED LUMBER TO BE SYP #2 (UNO).
- ALL LOAD BEARING HEADERS TO BE (2) 2 x 6 (UNO).
- WINDOW AND DOOR HEADERS TO BE SUPPORTED w/ (1) JACK STUD AND (1) KING STUD EA. END (UNO). SEE TABLE R60215 FOR ADDITIONAL KING STUD REQUIREMENTS.
- SQUARES DENOTE POINT LOADS WHICH REQUIRE SOLID BLOCKING TO GIRDER OR FOUNDATION. ALL SQUARES TO BE (2) STUDS (UNO).
- FOR HIGH WIND ZONES, ALL EXTERIOR WALLS TO BE SHEATHED WITH 1/8" OSB SHEATHING WITH JOINTS BLOCKED AND SECURED WITH 8d NAILS AT 3" O.C. ALONG EDGES AND 6" O.C. IN THE FIELD.
- FOR HIGH WIND ZONES, SECURE ALL EXTERIOR WALL SHEATHING PANELS TO DOUBLE TOP FLATES, BANDS, JOISTS, AND GIRDERS WITH (2) ROWS OF 8d NAILS STAGGERED AT 3" O.C. PANELS SHALL EXTEND 1" BEYOND CONSTRUCTION JOINTS AND SHALL OVERLAP GIRDERS AND DOUBLE SILL PLATES THEIR FULL DEPTH.

1. REFER TO NOTES AND DETAIL SHEETS FOR ADDITIONAL STRUCTURAL INFORMATION.

T&P INDICATES TRIPLE STUD POCKET BETWEEN WINDOW UNITS.

**TABLE R60215**  
MINIMUM NUMBER OF FULL HEIGHT STUDS AT EACH END OF HEADERS IN EXTERIOR WALLS

| HEADER SPAN (FEET) | MAXIMUM STUD SPACING (INCHES) (PER TABLE R60215) |    |
|--------------------|--|----|
|                    | 16   | 24 |
| UP TO 3'           | 1  | 1  |
| 4'                 | 2  | 1  |
| 6'                 | 3  | 2  |
| 8'                 | 5  | 3  |
| 10'                | 6  | 4  |



**J.S. THOMPSON ENGINEERING, INC.**  
606 WADE AVE., SUITE 104 RALEIGH, NC 27605  
PHONE (919) 789-9819 FAX (919) 789-9921  
N.C. LICENSE NO. C1173

JORDAN H&H HOMES, INC.



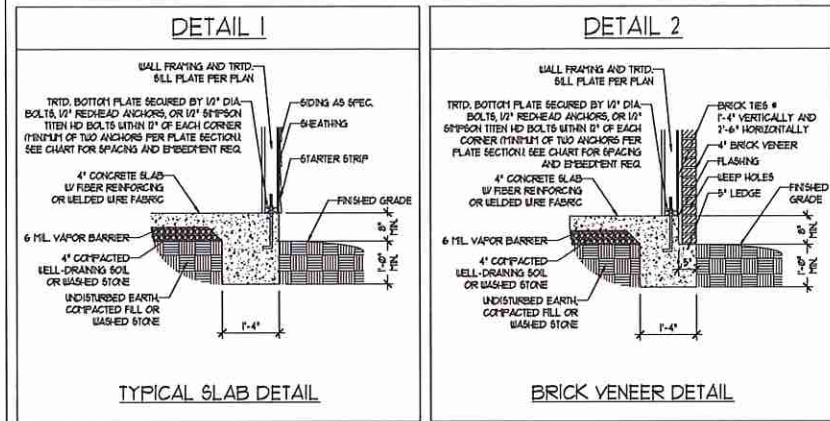
11/6/2020

DATE: NOVEMBER 5, 2020  
SCALE: 1/4" = 1'-0"  
DRAWN BY: RENAISSANCE RESIDENTIAL DESIGN  
ENGINEERED BY: WFB

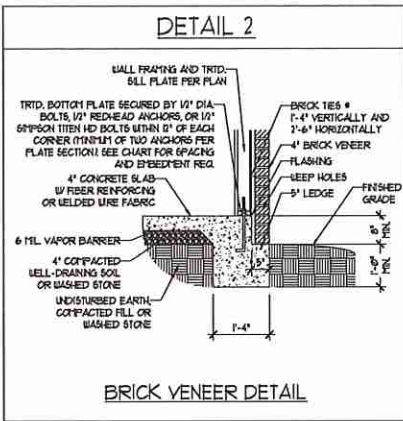
SHEET 8 OF 10  
S-3  
CEILING FRAMING PLAN



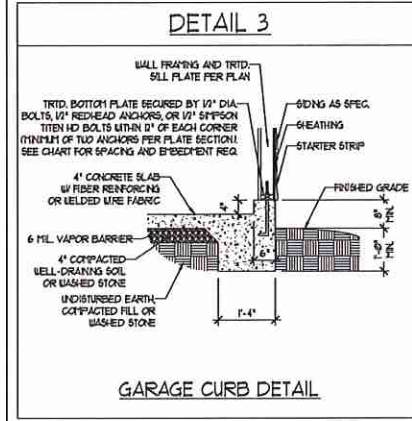
MONOLITHIC SLAB DETAILS



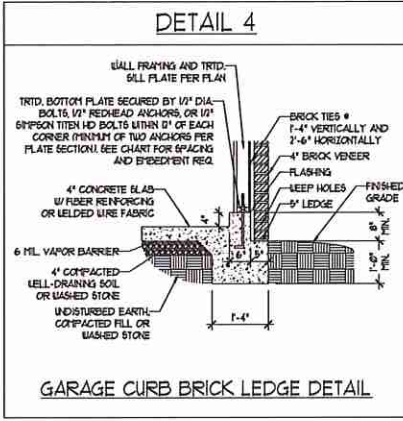
TYPICAL SLAB DETAIL



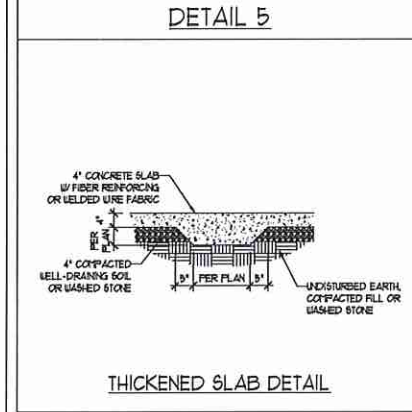
BRICK VENEER DETAIL



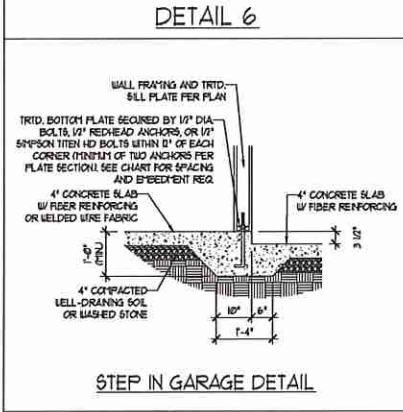
GARAGE CURB DETAIL



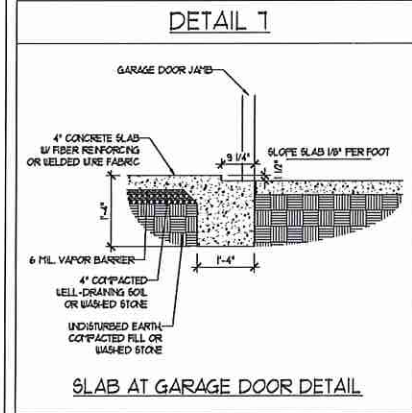
GARAGE CURB BRICK LEDGE DETAIL



THICKENED SLAB DETAIL

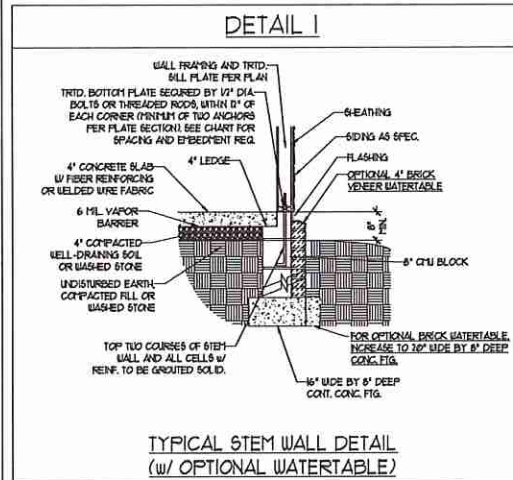


STEP IN GARAGE DETAIL

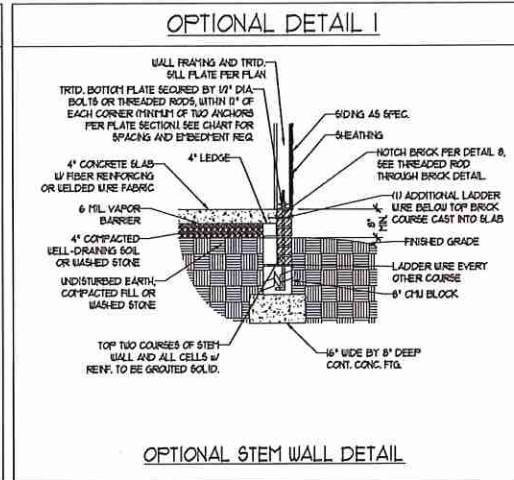


SLAB AT GARAGE DOOR DETAIL

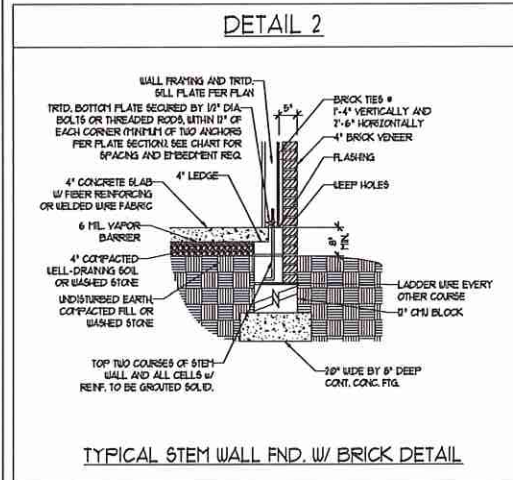
STEMWALL DETAILS



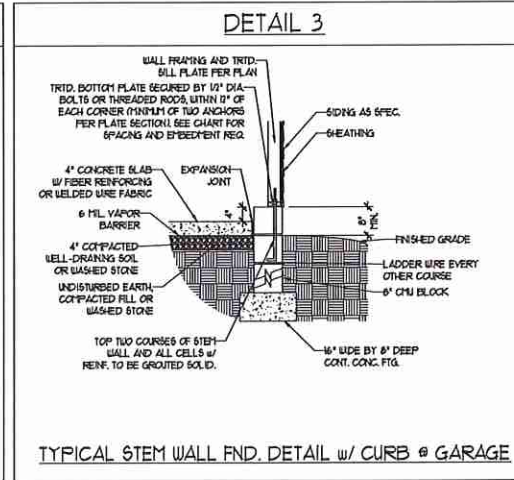
TYPICAL STEM WALL DETAIL (w/ OPTIONAL WATERTABLE)



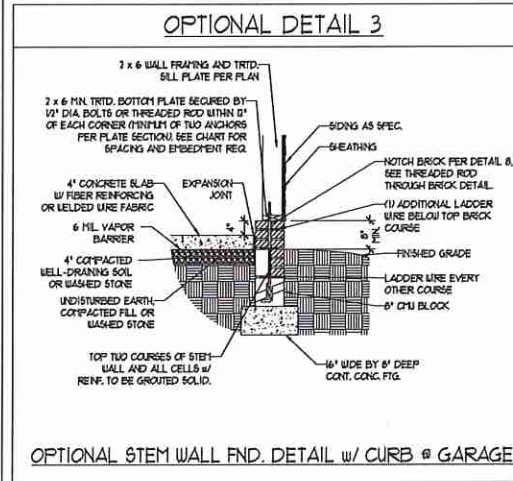
OPTIONAL STEM WALL DETAIL



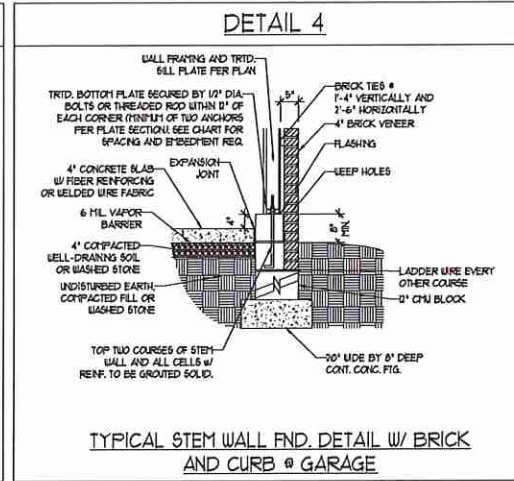
TYPICAL STEM WALL FND. w/ BRICK DETAIL



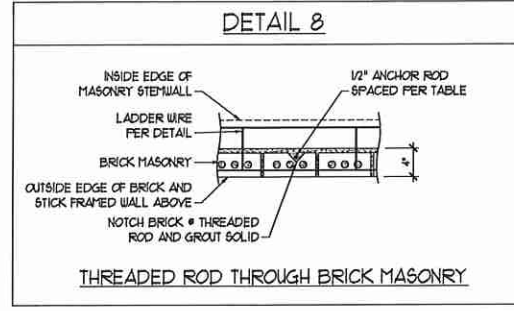
TYPICAL STEM WALL FND. DETAIL w/ CURB @ GARAGE



OPTIONAL STEM WALL FND. DETAIL w/ CURB @ GARAGE



TYPICAL STEM WALL FND. DETAIL w/ BRICK AND CURB @ GARAGE



THREADED ROD THROUGH BRICK MASONRY

MASONRY STEMWALL SPECIFICATIONS

| WALL HEIGHT (FEET) | MASONRY WALL TYPE                          |                                     |                                     |                                     |
|--------------------|--|-------------------------------------|-------------------------------------|-------------------------------------|
|                    | 8" CMU                                     | 4" BRICK AND 4" CMU                 | 4" BRICK AND 8" CMU                 | 12" CMU                             |
| 2 AND BELOW        | UNGROUTED                                  | GROUT SOLID                         | UNGROUTED                           | UNGROUTED                           |
| 3                  | UNGROUTED                                  | GROUT SOLID                         | UNGROUTED                           | UNGROUTED                           |
| 4                  | GROUT SOLID                                | GROUT SOLID w/ 1/4 REBAR @ 48" O.C. | GROUT SOLID                         | GROUT SOLID w/ 1/4 REBAR @ 64" O.C. |
| 5                  | GROUT SOLID w/ 1/4 REBAR @ 36" O.C.        | NOT APPLICABLE                      | GROUT SOLID w/ 1/4 REBAR @ 36" O.C. | GROUT SOLID w/ 1/4 REBAR @ 64" O.C. |
| 6                  | GROUT SOLID w/ 1/4 REBAR @ 24" O.C.        | NOT APPLICABLE                      | GROUT SOLID w/ 1/4 REBAR @ 24" O.C. | GROUT SOLID w/ 1/4 REBAR @ 64" O.C. |
| 7 AND GREATER      | ENGINEERED DESIGN BASED ON SITE CONDITIONS |                                     |                                     |                                     |

STRUCTURAL NOTES:

1. WALL HEIGHT MEASURED FROM TOP OF FOOTING TO TOP OF THE WALL.
2. THE MULTIPLE WYTHES TOGETHER WITH LADDER WIRE AT 16" O.C. VERTICALLY.
3. CHART APPLICABLE FOR HOUSE FOUNDATION ONLY, CONSULT ENGINEER FOR DESIGN OF GARAGE FOUNDATION NOT COMMON TO HOUSE.
4. BACKFILL OF CLEAN 5/8" #21 WASHED STONE IS ALLOWABLE.
5. BACKFILL OF WELL DRAINED OR SAND - GRAVEL MIXTURE SOILS (45 P&F% BELOW GRADE) CLASSIFIED AS GROUP 1 ACCORDING TO UNIFIED SOILS CLASSIFICATION SYSTEM IN ACCORDANCE WITH TABLE 4.02.1 OF THE 2018 INTERNATIONAL RESIDENTIAL CODE ARE ALLOWABLE.
6. PREP SLAB PER 906.2.1 AND 906.2.2 BASE OF THE 2018 INTERNATIONAL RESIDENTIAL CODE. MINIMUM 24" LAP SPLICE LENGTH.
7. LOCATE REBAR IN CENTER OF FOUNDATION WALL.
8. WHERE REQUIRED, FILL BLOCK SOLID WITH TYPE 15' MORTAR OR 3000 PSI GROUT. USE OF "LOW LET GROUTING" METHOD REQUIRED WHEN FILLING WALLS WITH GROUT AT HEIGHTS OF 5' AND GREATER.

ANCHOR SPACING AND EMBEDMENT

| WIND ZONE | 120 MPH    | 130 MPH                              |
|-----------|------------|--------------------------------------|
| SPACING   | 6'-0" O.C. | 4'-0" O.C.                           |
| EMBEDMENT | 1'         | 15" INTO MASONRY<br>1" INTO CONCRETE |

**J.S. THOMPSON ENGINEERING, INC.**  
606 WADE AVE., SUITE 104 RALEIGH, NC 27605  
PHONE: (919) 789-9919 FAX: (919) 789-9921  
N.C. LICENSE NO. C-1733

120 MPH - 130 MPH ULTIMATE DESIGN WIND SPEED  
FOUNDATION DETAILS

DATE: NOVEMBER 14, 2018  
SCALE: NTS  
DRAWN BY: JST  
ENGINEERED BY: JES

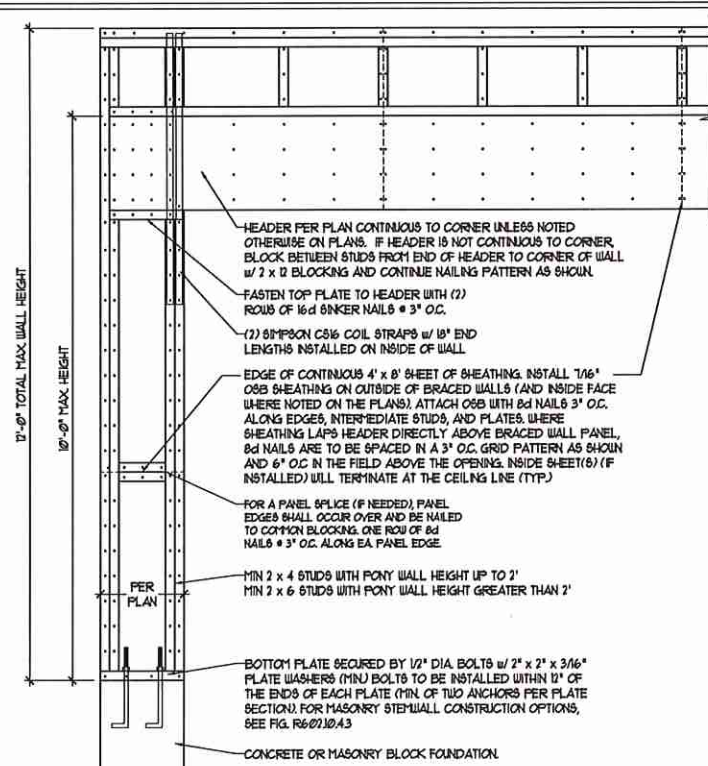


11/6/2020

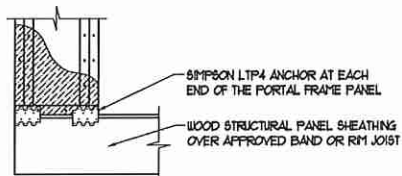
D-1  
FOUNDATION DETAILS

### GENERAL WALL BRACING NOTES:

1. WALL BRACING DESIGNED IN ACCORDANCE WITH CHAPTER 6 OF THE 2018 NC RESIDENTIAL BUILDING CODE (NCR). TABLES AND FIGURES REFERENCED ARE FROM THE 2018 NCR.
2. SEE THIS SHEET FOR GENERAL DETAILS. REFER TO THE 2018 NCR FOR ADDITIONAL INFORMATION AS NEEDED.
3. SEE STRUCTURAL SHEETS FOR BRACED WALL LOCATIONS, DIMENSIONS, HOLD DOWN TYPE AND LOCATIONS, BRACED WALL LINE KEY WITH WALL DESIGN SUMMARY OF REQUIRED/PROVIDED TOTALS FOR EACH WALL LINE AND ANY SPECIAL NOTES OR REQUIREMENTS.
4. ALL EXTERIOR WALLS ARE TO BE SHEATHED WITH CS-WSP IN ACCORDANCE WITH SECTION R602.10.3 UNLESS NOTED OTHERWISE.
5. ALL EXTERIOR AND INTERIOR WALLS TO HAVE 1/2" GYPSUM INSTALLED, WHEN NOT USING METHOD "GB", GYPSUM TO BE FASTENED PER TABLE R102.3.5. METHOD GB TO BE FASTENED PER TABLE R602.10.1.
6. CS-WSP REFERS TO THE "CONTINUOUS SHEATHING - WOOD STRUCTURAL PANELS" WALL BRACING METHOD. 1/8" OSB SHEATHING IS TO BE INSTALLED ON ALL EXTERIOR WALLS ATTACHED w/ 6d COMMON NAILS OR 8d (2 1/2" LONG x 0.131" DIAMETER) NAILS SPACED 6" O.C. ALONG PANEL EDGES AND 12" O.C. IN THE FIELD (UNO).
7. GB REFERS TO THE "GYPSUM BOARD" WALL BRACING METHOD. 1/2" (MIN) GYPSUM WALL BOARD IS TO BE INSTALLED ON BOTH SIDES OF THE BRACED WALL FASTENED WITH 1 1/4" SCREWS OR 1 5/8" NAILS 6" SPACED 1" O.C. ALONG PANEL EDGES INCLUDING TOP AND BOTTOM PLATES AND INTERMEDIATE SUPPORTS (UNO). VERIFY ALL FASTENER OPTIONS FOR 1/2" AND 5/8" GYPSUM PRIOR TO CONSTRUCTION. FOR INTERIOR FASTENER OPTIONS SEE TABLE R102.3.5. FOR EXTERIOR FASTENER OPTIONS SEE TABLE R602.3(1). EXTERIOR GB TO BE INSTALLED VERTICALLY.
8. REQUIRED BRACED WALL LENGTH FOR EACH SIDE OF THE CIRCUMSCRIBED RECTANGLE ARE INTERPOLATED PER TABLE R602.10.3. METHOD CS-WSP CONTRIBUTES ITS ACTUAL LENGTH, METHOD GB CONTRIBUTES 3/5 ITS ACTUAL LENGTH, AND METHOD FF CONTRIBUTES 1/5 TIMES ITS ACTUAL LENGTH.



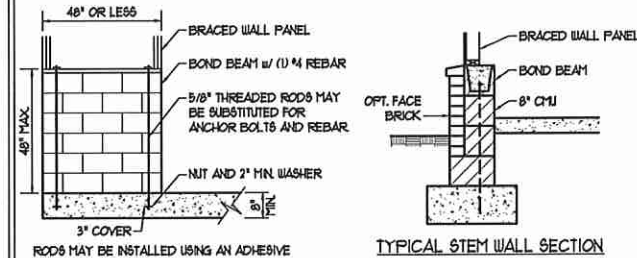
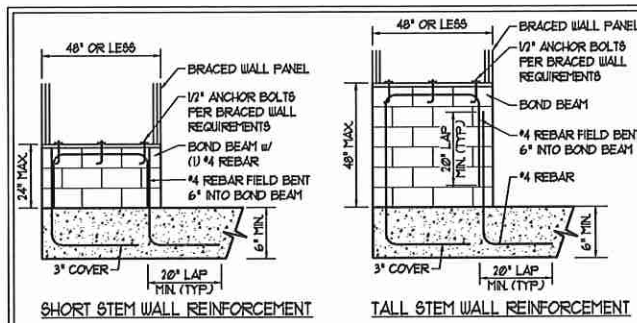
OVER CONCRETE OR MASONRY BLOCK FOUNDATION



OVER RAISED WOOD FLOOR - FRAMING ANCHOR OPTION

\* APPLICABLE w/ GREATER THAN 12" KNEE WALL HEIGHTS IN CRAWL SPACE AND ABOVE FRAMED BASEMENT WALLS \*

### METHOD FF-PORTAL FRAME DETAIL ①



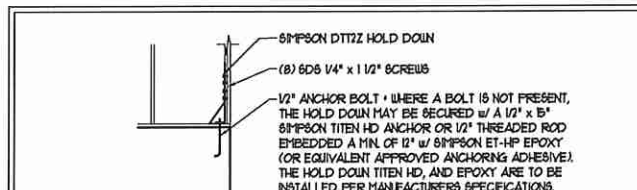
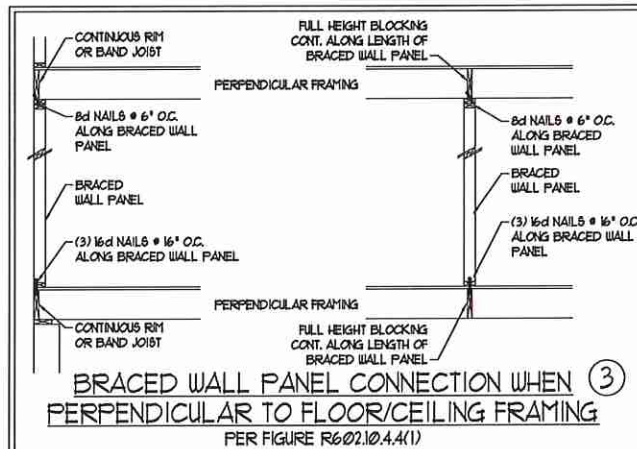
RODS MAY BE INSTALLED USING AN ADHESIVE ANCHORING SYSTEM WITH A MINIMUM TENSILE CAPACITY OF 3750 LBS AND INSTALLED IN ACCORDANCE WITH MANUFACTURER'S SPECS.

OPTIONAL STEM WALL REINFORCEMENT

NOTE: GROUT BOND BEAMS AND ALL CELLS WHICH CONTAIN REBAR, THREADED RODS AND ANCHOR BOLTS

MASONRY STEM WALLS SUPPORTING BRACED WALL PANELS ②

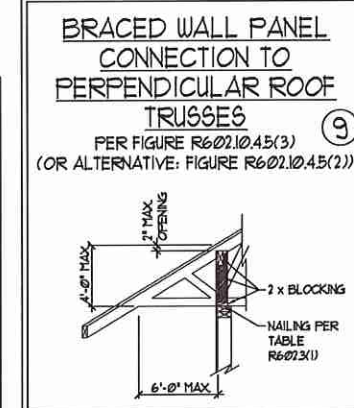
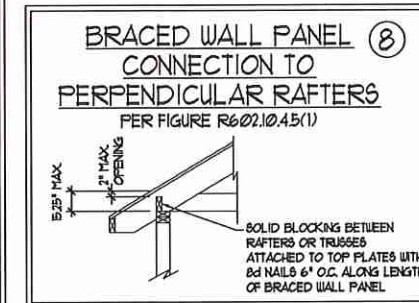
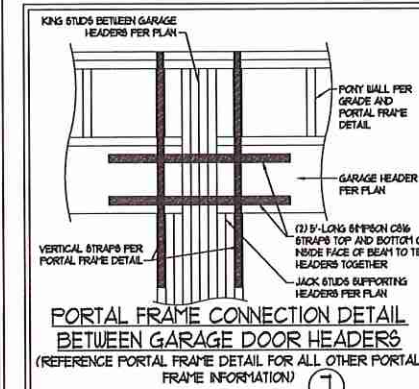
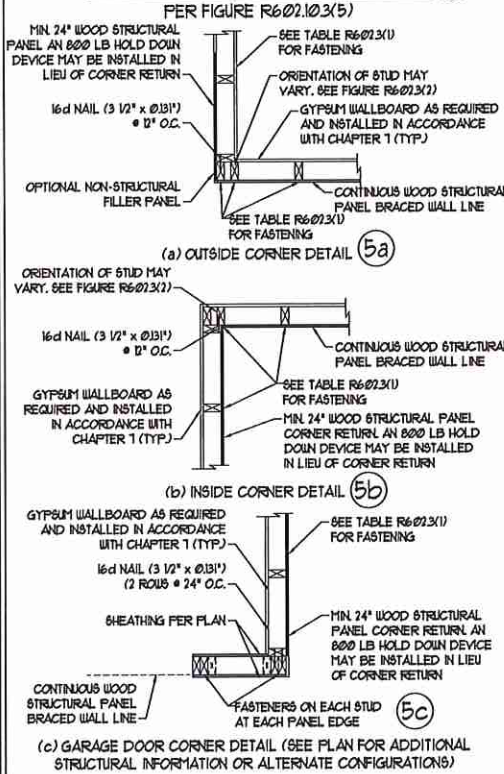
PER FIGURE R602.10.4.3



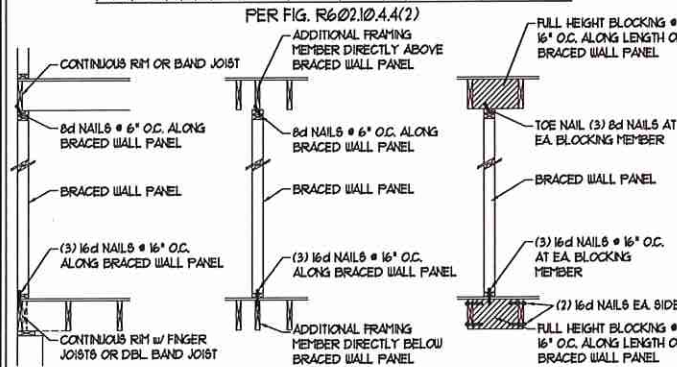
### HOLD DOWN DETAIL FOR MASONRY FOUNDATION OR MONOLITHIC SLAB ④

\* APPLICABLE ONLY WHERE SPECIFIED ON PLAN \*

### TYPICAL EXTERIOR CORNER FRAMING FOR CONTINUOUS SHEATHING ⑤



### BRACED WALL PANEL CONNECTION WHEN PARALLEL TO FLOOR/CEILING FRAMING ⑥



This sealed page is to be used in conjunction with a full plan set engineered by J.S. Thompson Engineering, Inc. only. Use of this individual sealed page within architectural pages or shop drawings by others is a punishable offense under N.C. Statute § 89C-23



11/6/2020

**J.S. THOMPSON ENGINEERING, INC.**  
606 WADE AVE., SUITE 104 RALEIGH, NC 27665  
PHONE: (919) 789-9919 FAX: (919) 789-9921  
N.C. LICENSE NO. C11731

120 MPH - 130 MPH ULTIMATE DESIGN WIND SPEED  
WALL BRACING NOTES AND DETAILS

DATE: NOVEMBER 14, 2018  
SCALE: 1/4" = 1'-0"  
DRAWN BY: JST  
ENGINEERED BY: JST

D-2  
BRACED WALL NOTES AND DETAILS AND PF DETAIL

**GENERAL NOTES**

- ENGINEER'S SEAL APPLIES ONLY TO STRUCTURAL COMPONENTS INCLUDING ROOF RAFTERS, HIPS, VALLEYS, RIDGES, FLOORS, WALLS, BEAMS, HEADERS, COLUMNS, CANTILEVERS, OFFSET LOAD BEARING WALLS, PIERS, GIRDER SYSTEM AND FOOTING. ENGINEER'S SEAL DOES NOT CERTIFY DIMENSIONAL ACCURACY OF ARCHITECTURAL LAYOUT INCLUDING ROOF. ENGINEER'S SEAL DOES NOT APPLY TO I-JOIST OR FLOOR/ROOF TRUSS LAYOUT DESIGN AND ACCURACY.
  - ALL CONSTRUCTION SHALL CONFORM TO THE LATEST REQUIREMENTS OF THE NORTH CAROLINA RESIDENTIAL CODE (NRC), 2018 EDITION, PLUS ALL LOCAL CODES AND REGULATIONS. THE STRUCTURAL ENGINEER IS NOT RESPONSIBLE FOR, AND WILL NOT HAVE CONTROL OF, CONSTRUCTION MEANS, METHODS, TECHNIQUES, SEQUENCES OR PROCEDURES, OR SAFETY PRECAUTIONS AND PROGRAMS IN CONNECTION WITH THE CONSTRUCTION WORK. NOR WILL THE ENGINEER BE RESPONSIBLE FOR THE CONTRACTOR'S FAILURE TO CARRY OUT THE CONSTRUCTION WORK IN ACCORDANCE WITH THE CONTRACT DOCUMENTS.
  - STRUCTURAL DESIGN BASED ON THE PROVISIONS OF THE NRC, 2018 EDITION (R301.4 - R301.7)
- | DESIGN CRITERIA:   | LIVE LOAD (PSF)     | DEAD LOAD (PSF) | DEFLECTION (IN)                   |
|--|---------------------|-----------------|-----------------------------------|
| ATTIC WITH LIMITED STORAGE                                     | 20                  | 10              | L/140 (L/360 w/ BRITTLE FINISHES) |
| ATTIC WITHOUT STORAGE  | 10                  | 10              | L/360                             |
| DECKS  | 40                  | 10              | L/360                             |
| EXTERIOR BALCONIES   | 40                  | 10              | L/360                             |
| FIRE ESCAPES   | 40                  | 10              | L/360                             |
| HANDRAILS/GUARDRAILS   | 200 LB OR 50' (PLF) | 10              | L/360                             |
| PASSENGER VEHICLE GARAGE                                       | 50                  | 10              | L/360                             |
| ROOMS OTHER THAN SLEEPING ROOM                                 | 40                  | 10              | L/360                             |
| SLEEPING ROOMS   | 30                  | 10              | L/360                             |
| STAIRS   | 40                  | 10              | L/360                             |
| WIND LOAD<br>(BASED ON TABLE R301.2(4) WIND ZONE AND EXPOSURE) |                     |                 |                                   |
| GROUND SNOW LOAD: Pg   | 20 (PSF)            |                 |                                   |
- I-JOIST SYSTEMS DESIGNED WITH 10 PSF DEAD LOAD AND DEFLECTION (IN) OF L/480  
- FLOOR TRUSS SYSTEMS DESIGNED WITH 15 PSF DEAD LOAD
- FOR 15 AND 10 MPH WIND ZONES, FOUNDATION ANCHORAGE IS TO COMPLY WITH SECTION R402.16 OF THE NRC, 2018 EDITION. FOR 30 MPH, 140 MPH, AND 50 MPH WIND ZONES, FOUNDATION ANCHORAGE IS TO COMPLY WITH SECTION 4504 OF THE NRC, 2018 EDITION.
  - ENERGY EFFICIENCY COMPLIANCE AND INSULATION VALUES OF THE BUILDING TO BE IN ACCORDANCE WITH CHAPTER II OF THE NRC, 2018 EDITION.

**FOOTING AND FOUNDATION NOTES**

- FOUNDATION DESIGN BASED ON A MINIMUM ALLOWABLE BEARING CAPACITY OF 2000 PSF. CONTACT GEOTECHNICAL ENGINEER IF BEARING CAPACITY IS NOT ACHIEVED.
- FOR ALL CONCRETE SLABS AND FOOTINGS, THE AREA WITHIN THE PERIMETER OF THE BUILDING ENVELOPE SHALL HAVE ALL VEGETATION TOP SOIL AND FOREIGN MATERIAL REMOVED. FILL MATERIAL SHALL BE FREE OF VEGETATION AND FOREIGN MATERIAL. THE FILL SHALL BE COMPACTED TO ASSURE UNIFORM SUPPORT OF THE SLAB, AND EXCEPT WHERE APPROVED, THE FILL DEPTHS SHALL NOT EXCEED 24" FOR CLEAN SAND OR GRAVEL. A 4" THICK BASED COURSE CONSISTING OF CLEAN GRADED SAND OR GRAVEL SHALL BE PLACED. A BASE COURSE IS NOT REQUIRED WHERE A CONCRETE SLAB IS INSTALLED ON WELL-DRAINED OR SAND-GRAVEL MIXTURE SOILS CLASSIFIED AS GROUP 1, ACCORDING TO THE UNITED SOIL CLASSIFICATION SYSTEM IN ACCORDANCE WITH TABLE R402.1 OF THE NRC, 2018 EDITION.
- PROPERLY DEWATER EXCAVATION PRIOR TO POURING CONCRETE WHEN BOTTOM OF CONCRETE SLAB IS AT OR BELOW WATER TABLE. IF APPLICABLE, 3/4" - 1" DEEP CONTROL JOINTS ARE TO BE SALED WITHIN 4 TO 12 HOURS OF CONCRETE FINISHING AND WALL LOCATIONS HAVE BEEN MARKED. ADJUST WHERE NECESSARY.
- CONCRETE SHALL CONFORM TO SECTION R402.2 OF THE NRC, 2018 EDITION. CONCRETE REINFORCING STEEL TO BE ASTM A615 GRADE 60, WELDED WIRE FABRIC TO BE ASTM A185. MAINTAIN A MINIMUM CONCRETE COVER AROUND REINFORCING STEEL OF 3" IN FOOTINGS AND 1 1/2" IN SLABS. FOR POURED CONCRETE WALLS, CONCRETE COVER FOR REINFORCING STEEL MEASURED FROM THE INSIDE FACE OF THE WALL SHALL NOT BE LESS THAN 3/4". CONCRETE COVER FOR REINFORCING STEEL MEASURED FROM THE OUTSIDE FACE OF THE WALL SHALL NOT BE LESS THAN 1 1/2" FOR 5 BARS OR SMALLER, AND NOT LESS THAN 2" FOR 6 BARS OR LARGER.
- MASONRY UNITS TO CONFORM TO ACE 530/ASCE 5/11/15 402. MORTAR SHALL CONFORM TO ASTM C710.
- THE UNSUPPORTED HEIGHT OF MASONRY PIERS SHALL NOT EXCEED FOUR TIMES THEIR LEAST DIMENSION FOR UNFILLED HOLLOW CONCRETE MASONRY UNITS AND TEN TIMES THEIR LEAST DIMENSION FOR SOLID OR SOLID FILLED PIERS. PIERS MAY BE FILLED SOLID WITH CONCRETE OR TYPE M OR S MORTAR. PIERS AND WALLS SHALL BE CAPPED WITH 8" OF SOLID MASONRY.
- THE CENTER OF EACH OF THE PIERS SHALL BEAR IN THE MIDDLE THIRD OF ITS RESPECTIVE FOOTING. EACH GIRDER SHALL BEAR IN THE MIDDLE THIRD OF THE PIERS.
- ALL CONCRETE AND MASONRY FOUNDATION WALLS ARE TO BE CONSTRUCTED IN ACCORDANCE WITH THE PROVISIONS OF SECTION R404 OF THE NRC, 2018 EDITION OR IN ACCORDANCE WITH ACI 318, ACI 332, NCHA TR68-A OR ACE 530/ASCE 5/11/15 402. MASONRY FOUNDATION WALLS ARE TO BE REINFORCED PER TABLE R404.1(1), R404.1(2), R404.1(3), OR R404.1(4) OF THE NRC, 2018 EDITION. CONCRETE FOUNDATION WALLS ARE TO BE REINFORCED PER TABLE R404.1(5) OF THE NRC, 2018 EDITION. STEP CONCRETE FOUNDATION WALLS TO 2 x 6 FRAMED WALLS AT 16" O.C. WHERE GRADE PERMITS (NO).

This sealed page is to be used in conjunction with a full plan set engineered by J.S. Thompson Engineering, Inc. only. Use of this individual sealed page within architectural pages or shop drawings by others is a punishable offense under N.C. Statute § 89C-23

**FRAMING NOTES**

- ALL FRAMING LUMBER SHALL BE #2 SFF MINIMUM (Fb = 875 PSI, Fv = 375 PSI, E = 1600000 PSI) UNLESS NOTED OTHERWISE (NO). ALL TREATED LUMBER SHALL BE #2 SYP MINIMUM (Fb = 575 PSI, Fv = 175 PSI, E = 1600000 PSI) UNLESS NOTED OTHERWISE (NO).
- LAMINATED VENEER LUMBER (LVL) SHALL HAVE THE FOLLOWING MINIMUM PROPERTIES: Fb = 2600 PSI, Fv = 285 PSI, E = 1900000 PSI. LAMINATED STRAND LUMBER (LSL) SHALL HAVE THE FOLLOWING MINIMUM PROPERTIES: Fb = 2375 PSI, Fv = 310 PSI, E = 1500000 PSI. PARALLEL STRAND LUMBER (PSL) UP TO 1" DEPTH SHALL HAVE THE FOLLOWING MINIMUM PROPERTIES: Fc = 2500 PSI, E = 1000000 PSI. PARALLEL STRAND LUMBER (PSL) MORE THAN 1" DEPTH SHALL HAVE THE FOLLOWING MINIMUM PROPERTIES: Fc = 2900 PSI, E = 2000000 PSI. INSTALL ALL CONNECTIONS PER MANUFACTURER'S SPECIFICATIONS.
- STRUCTURAL STEEL SHALL CONFORM TO THE FOLLOWING ASTM SPECIFICATIONS
 

|                                |                                |
|--------------------------------|--------------------------------|
| A. I AND IIT SHAPES:           | ASTM A992                      |
| B. CHANNELS AND ANGLES:        | ASTM A36                       |
| C. PLATES AND BARS:            | ASTM A36                       |
| D. HOLLOW STRUCTURAL SECTIONS: | ASTM A500 GRADE B              |
| E. STEEL PIPE:                 | ASTM A53, GRADE B, TYPE E OR 6 |
- STEEL BEAMS SHALL BE SUPPORTED AT EACH END WITH A MINIMUM BEARING LENGTH OF 3 1/2' AND FULL FLANGE WIDTH (NO). PROVIDE SOLID BEARING FROM BEAM SUPPORT TO FOUNDATION. BEAMS SHALL BE ATTACHED AT THE BOTTOM FLANGE TO EACH SUPPORT AS FOLLOWS (NO).
 

|                            |  |
|----------------------------|--|
| A. WOOD FRAMING            | (2) 1/2" DIA. x 4" LONG LAG SCREWS                 |
| B. CONCRETE                | (2) 1/2" DIA. x 4" WEDGE ANCHORS                   |
| C. MASONRY (FULLY GROUTED) | (2) 1/2" DIA. x 4" LONG 8" PIPSON TITEN HD ANCHORS |

LATERAL SUPPORT IS CONSIDERED ADEQUATE PROVIDING THE JOISTS ARE TOE NAILED TO THE 2x NAILER ON TOP OF THE STEEL BEAM, AND THE 2x NAILER IS SECURED TO THE TOP OF THE STEEL BEAM w/ (2) ROWS OF SELF TAPPING SCREWS @ 16" O.C. OR (2) ROWS OF 1/2" DIAMETER BOLTS @ 16" O.C. IF 1/2" BOLTS ARE USED TO FASTEN THE NAILER, THE STEEL BEAM SHALL BE FABRICATED w/ (2) ROWS OF 3/16" DIAMETER HOLES @ 16" O.C.
- SQUARES DENOTE POINT LOADS WHICH REQUIRE SOLID BLOCKING TO GIRDER OR FOUNDATION. SHADED SQUARES DENOTE POINT LOADS FROM ABOVE WHICH REQUIRE SOLID BLOCKING TO SUPPORTING MEMBER BELOW.
- ALL LOAD BEARING HEADERS TO CONFORM TO TABLE R602.1(1) AND R602.1(2) OF THE NRC, 2018 EDITION OR BE (2) 2 x 6 WITH (1) JACK AND (1) KING STUD EACH END (NO), WHICHEVER IS GREATER. ALL HEADERS TO BE SECURED TO EACH JACK STUD WITH (4) 8d NAILS. ALL BEAMS TO BE SUPPORTED WITH (2) STUDS AT EACH BEARING POINT (NO). INSTALL KING STUDS PER SECTION R602.15 OF THE NORTH CAROLINA RESIDENTIAL CODE, 2018 EDITION.
- ALL BEAMS, HEADERS, OR GIRDER TRUSSES PARALLEL TO WALL ARE TO BEAR FULLY ON (1) JACK OR (2) STUDS MINIMUM OR THE NUMBER OF JACKS OR STUDS NOTED. ALL BEAMS OR GIRDER TRUSSES PERPENDICULAR TO WALL AND SUPPORTED BY (3) STUDS OR LESS ARE TO HAVE 1 1/2" MINIMUM BEARING (NO). ALL BEAMS OR GIRDER TRUSSES PERPENDICULAR TO WALL AND SUPPORTED BY MORE THAN (3) STUDS OR OTHER NOTED COLUMN ARE TO BEAR FULLY ON SUPPORT COLUMN FOR ENTIRE WALL DEPTH (NO). BEAM ENDS THAT BUTT INTO ONE ANOTHER ARE TO EACH BEAR EQUAL LENGTHS (NO).
- FLITCH BEAMS SHALL BE BOLTED TOGETHER USING 1/2" DIAMETER BOLTS (ASTM A307) WITH WASHERS PLACED AT THREADED END OF BOLT. BOLTS SHALL BE SPACED AT 24" CENTERS (MAXIMUM), AND STAGGERED AT TOP AND BOTTOM OF BEAM (2" EDGE DISTANCE), WITH (2) BOLTS LOCATED AT 6" FROM EACH END (NO).
- ALL I-JOIST OR TRUSS LAYOUTS ARE TO BE IN COMPLIANCE WITH THE OVERALL DESIGN SPECIFIED ON THE PLANS. ALL DEVIATIONS ARE TO BE BROUGHT TO THE ATTENTION OF THE ENGINEER OF RECORD PRIOR TO INSTALLATION.
- BRACED WALL PANELS SHALL BE CONSTRUCTED ACCORDING TO THE NORTH CAROLINA RESIDENTIAL CODE 2018 EDITION WALL BRACING CRITERIA. THE AMOUNT, LENGTH, AND LOCATION OF BRACING SHALL COMPLY WITH ALL APPLICABLE TABLES IN SECTION R602.10.
- PROVIDE DOUBLE JOIST UNDER ALL WALLS PARALLEL TO FLOOR JOISTS. PROVIDE SUPPORT UNDER ALL WALLS PARALLEL TO FLOOR TRUSSES OR I-JOISTS PER MANUFACTURER'S SPECIFICATIONS. INSTALL BLOCKING BETWEEN JOISTS OR TRUSSES FOR POINT LOAD SUPPORT FOR ALL POINT LOADS ALONG OFFSET LOAD LINES.
- FOR ALL HEADERS SUPPORTING BRICK VENEER THAT ARE LESS THAN 8'-0" IN LENGTH, REST A 6" x 4" x 5/16" STEEL ANGLE WITH 6" MINIMUM EMBEDMENT AT SIDES FOR BRICK SUPPORT (NO). FOR ALL HEADERS 8'-0" AND GREATER IN LENGTH, BOLT A 6" x 4" x 5/16" STEEL ANGLE TO HEADER WITH 1/2" LAG SCREWS AT 12" O.C. STAGGERED FOR BRICK SUPPORT. FOR ALL BRICK SUPPORT AT ROOF LINES, BOLT A 6" x 4" x 5/16" STEEL ANGLE TO (2) 2 x 10 BLOCKING INSTALLED w/ (4) 10d NAILS EA. FLY BETWEEN WALL STUDS WITH (2) ROWS OF 1/2" LAG SCREWS AT 12" O.C. STAGGERED AND IN ACCORDANCE WITH SECTION R103.2(1) OF THE NRC, 2018 EDITION.
- FOR STICK FRAMED ROOFS: CIRCLES DENOTE (3) 2 x 4 POSTS FOR ROOF MEMBER SUPPORT. HIP SPLICES ARE TO BE SPACED A MINIMUM OF 8'-0". FASTEN MEMBERS WITH THREE ROWS OF 10d NAILS AT 16" O.C. FRAME DORMER WALLS ON TOP OF DOUBLE OR TRIPLE RAFTERS AS SHOWN (NO).
- FOR TRUSSED ROOFS: FRAME DORMER WALLS ON TOP OF 2 x 4 LADDER FRAMING AT 24" O.C. BETWEEN ADJACENT ROOF TRUSSES. STICK FRAME OVER-FRAMED ROOF SECTION WITH 2 x 8 RIDGES, 2 x 6 RAFTERS AT 16" O.C. AND FLAT 2 x 10 VALLEYS (NO).
- ALL 4 x 4 AND 6 x 6 POSTS TO BE INSTALLED WITH 1000 LB CAPACITY UPLIFT CONNECTORS TOP AND BOTTOM (NO). POSTS MAY BE SECURED USING ONE 8" PIPSON 1/6 OR 1/82 UPLIFT CONNECTOR FASTENED TO THE BAND AT THE BOTTOM AND THE BEAM AT THE TOP OF EACH POST. ONE 16" SECTION OF 8" PIPSON C816 COL. STRAPPING WITH (8) 8d HDG NAILS AT EACH END MAY BE USED IN LIEU OF EACH TUBST STRAP IF DESIRED. FOR MASONRY OR CONCRETE FOUNDATION USE 8" PIPSON POST BASE.



**J.S. THOMPSON ENGINEERING, INC.**  
 656 WADE AVE., SUITE 104 RALEIGH, NC 27605  
 PHONE (919) 789-9919 FAX (919) 789-9921  
 N.C. LICENSE NO. C1733

120 MPH - 130 MPH ULTIMATE DESIGN WIND SPEED  
 STANDARD STRUCTURAL NOTES

|                         |
|-------------------------|
| DATE: NOVEMBER 14, 2018 |
| SCALE: 1/4" = 1'-0"     |
| DRAWN BY: JES           |
| ENGINEERED BY: JST      |

S0  
 STRUCTURAL  
 NOTES