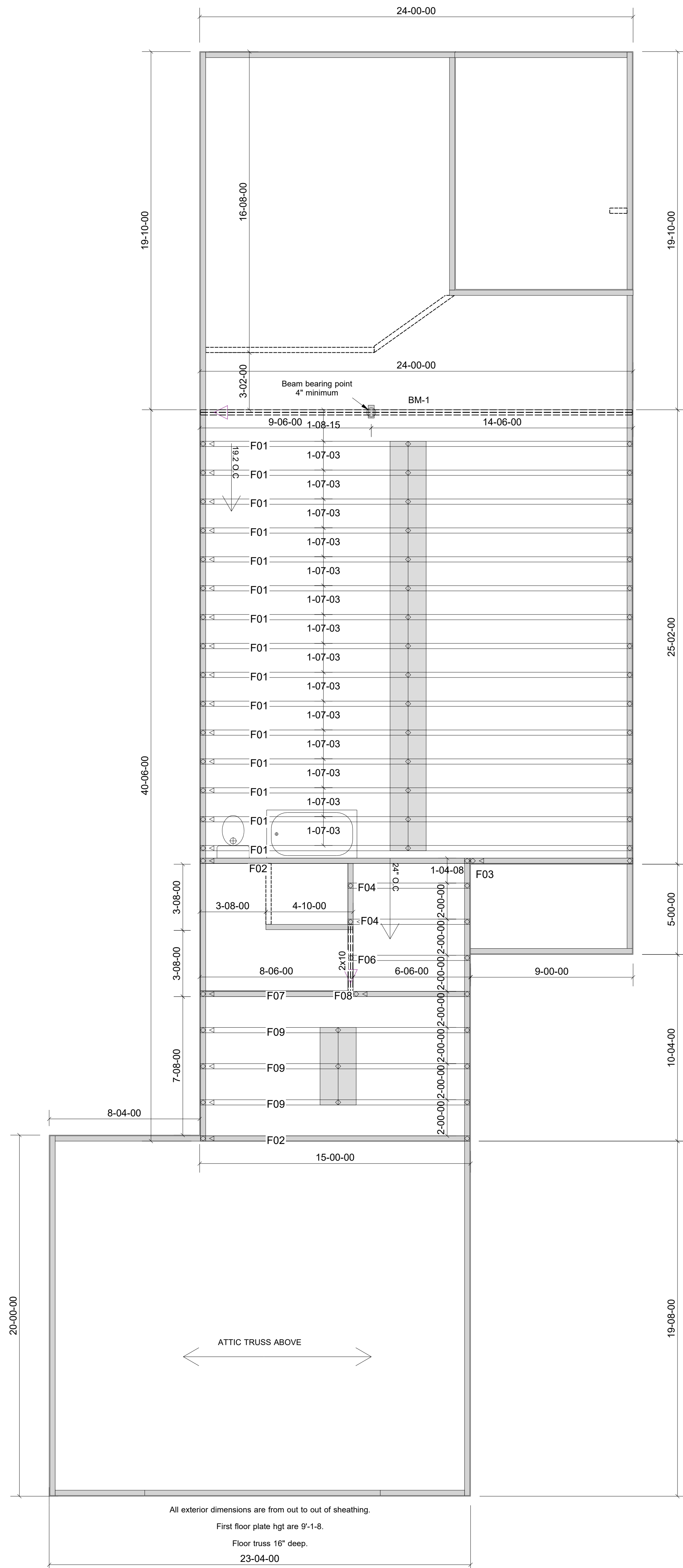


WARNING! Long span trusses, 60' or greater in length, require extreme care and experience for proper and safe handling and installation. For general handling and installation guidance, see the "Guide to Good Practice for Handling, Installing, Restraining & Bracing of Metal Plate Connected Wood Trusses (BCSI)", JOINTLY PRODUCED BY SBCA and TPI. For project specific guidance, consult with a registered design professional. ATLANTIC assumes no responsibility for the handling, installation or bracing of trusses.



All exterior dimensions are from out to out of sheathing.
 First floor plate hgt are 9'-1-8".
 Floor truss 16" deep.
 23-04-00

Products					
PlotID	Length	Product	Plies	Net Qty	Fab Type
BM-1	24-00-00	1-3/4" x 16" VERSA-LAM@ 2.0 3100 SP	2	2	FF

NOTE PLUMBING DROPS:
 PLUMBING SYMBOLS SHOWN ARE APPROXIMATE LOCATIONS ONLY.
 TRUSSES HAVE ALREADY BEEN SHIFTED WHERE NEEDED.
 BUILDER TO FIELD VERIFY ACTUAL LOCATIONS TO AVOID POSSIBLE
 CONFLICTS WITH TRUSSES.
 CLEAR DISTANCE FOR FLOOR DECKING NOT TO EXCEED 24".
 ***FLOOR TRUSSES ARE NOT TO BE DRILLED OR CUT IN ANY WAY ***

▲ = LEFT END OF TRUSS

NOT FOR CONSTRUCTION



Moncks Corner/Easley, SC (800) 475-3999
 Sparta, NC (336) 372-2226

REVISIONS:

Client: **CAPITOL CITY HOMES, LLC**
 Job: **LOT 1153 CARRIAGE CIRCLE**
 Plan Information:
WATSON II-A

NOT TO SCALE

Date: / /

Drawn By:
 AMH

Job #: Sales Rep: KYLE GIBSON
 21-1986-F02 Phone:

FLOOR