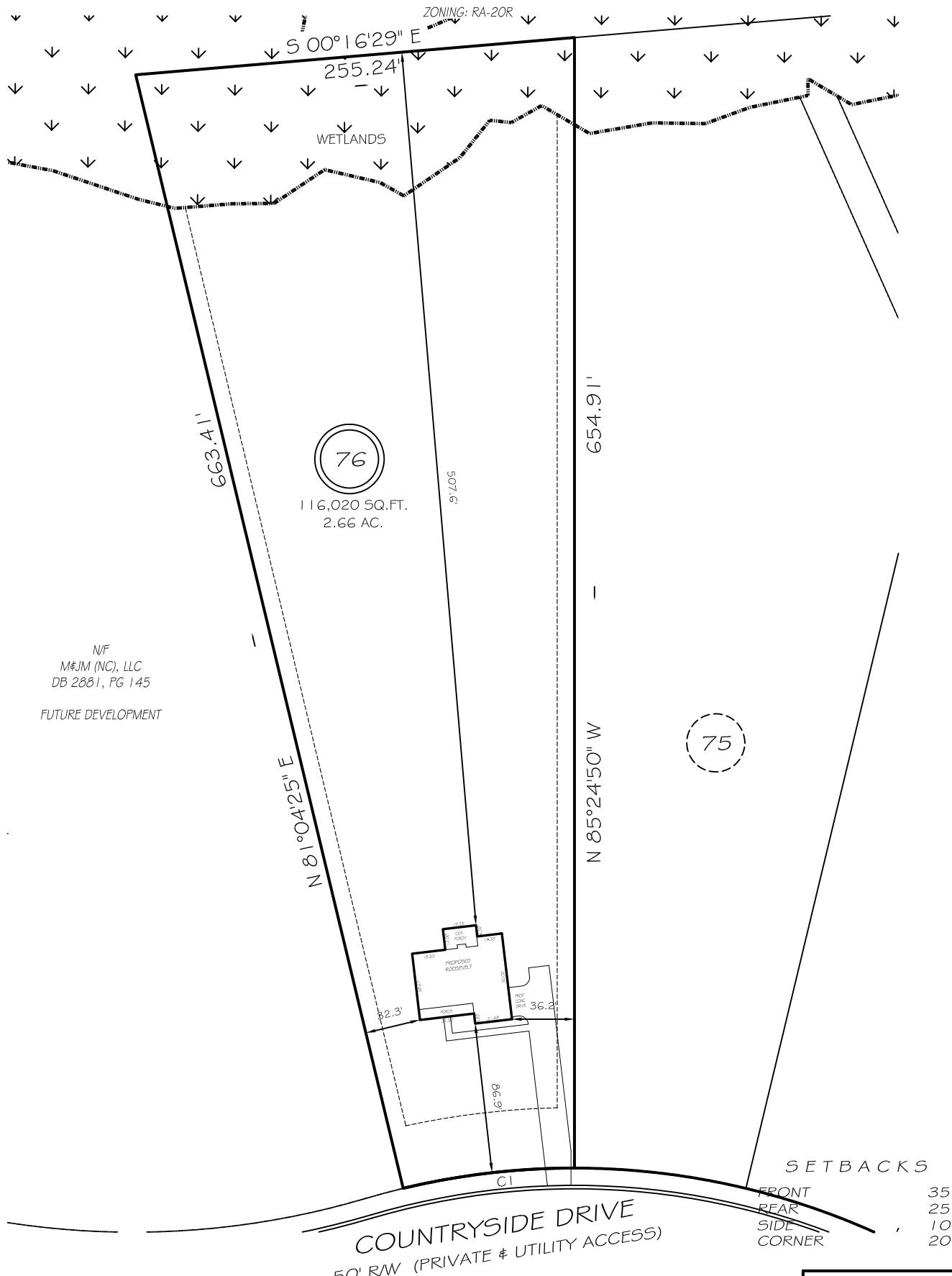


I, MICHAEL P. GRIFFIN, certify that under my direction and supervision this map was drawn from an actual field survey; that the error of closure of the survey as calculated by coordinates is 1: 10,000+; that the area shown hereon was calculated by coordinates.
 Witness my hand and seal this day of MONTH 2021.

N/F
 M&JM(NC), LLC.
 DB 2881, PG 145
 PB 2005, PG 703

BK 2021 PG 159-161
 HARNETT CO. REGISTRY



N/F
 M&JM (NC), LLC
 DB 2881, PG 145
 FUTURE DEVELOPMENT

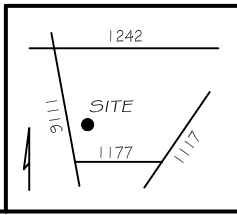
75

SETBACKS
 FRONT 35'
 REAR 25'
 SIDE 10'
 CORNER 20'

CI R=425.00' L=100.23' N02°10'13\"/>

LEGEND

EIP	EXISTING IRON PIPE	FES	FLARED END SECTION
IPS	IRON PIPE SET	WM	WATER METER
RW	RIGHT OF WAY	CO	CLEAN OUT
N/F	NOW OR FORMERLY	FH	FIRE HYDRANT
EIS	EXISTING IRON STAKE	CB	CATCH BASIN



P R E L I M I N A R Y
 NOT FOR RECORDATION,
 SALES OR CONVEYANCE

GLS GRIFFIN LAND SURVEYING, INC.
 P. O. BOX 148
 FUQUAY-VARINA, NC 27526
 (919) - 567-1963

PLOT PLAN
 FOR
H & H HOMES
 OAKMONT
 LOT 76
 COUNTRYSIDE DRIVE
 NORTH CAROLINA
 HARNETT COUNTY BARBECUE TOWNSHIP

DRAWN BY NMF

DATE 4/23/21

CHECKED BY MPG

SCALE 1" = 80'