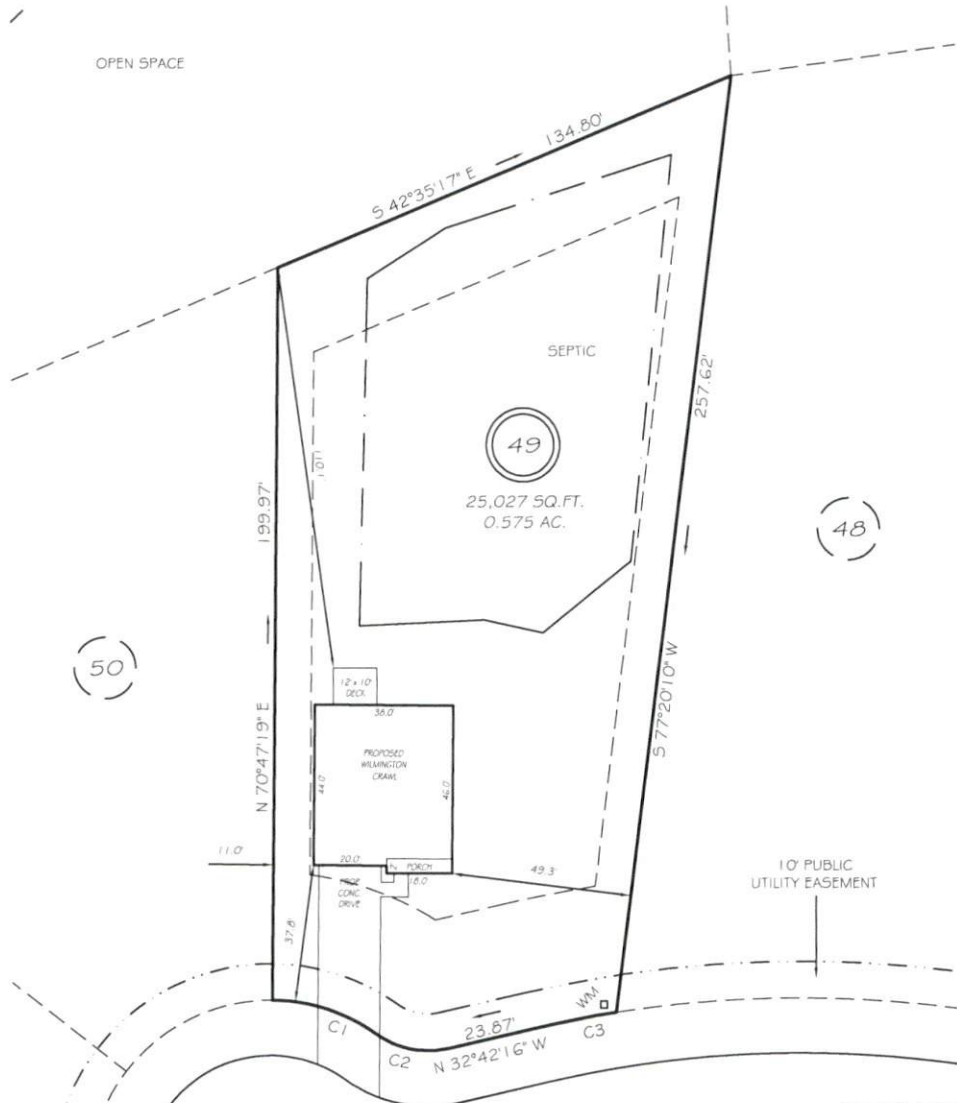


I, MICHAEL P. GRIFFIN, certify that under my direction and supervision this map was drawn from an actual field survey; that the error of closure of the survey as calculated by coordinates is 1: 10,000+; that the area shown hereon was calculated by coordinates.
 Witness my hand and seal this day of MONTH 2021.

PL 2021 PGS 139-141
 HARNETT CO. REGISTRY

(45)

OPEN SPACE



(48)

(50)

IMPERVIOUS AREAS

HOUSE	1708 SQ. FT.
DRIVE & WALKS	785 SQ. FT.
PATIO	0 SQ. FT.
TOTAL	2493 SQ. FT.
ALLOWED	5500 SQ. FT.

FARM POND CIRLCE

50' PUBLIC R/W & UTILITY

C1 R=50.00' L=30.28' N01°51'47"W 29.82'
 C2 R=25.00' L=21.03' S08°36'35"E 20.41'
 C3 R=325.00' L=23.09' N30°40'10"W 23.08'

REVISION: HOLD LEFT 6/11/21
 REVISION: 5' BACK & HOLD RIGHT 5/4/21

SETBACKS

FRONT	35'
REAR	25'
SIDE	10'
CORNER SIDE	20'

PRELIMINARY
 NOT FOR RECORDATION,
 SALES OR CONVEYANCE

LEGEND

EIP	EXISTING IRON PIPE	FES	FLARED END SECTION
IPS	IRON PIPE SET	WM	WATER METER
RAW	RIGHT OF WAY	CO	CLEAN OUT
N/F	NOW OR FORMERLY	FH	FIRE HYDRANT
EIS	EXISTING IRON STAKE	CB	CATCH BASIN



GRIFFIN LAND SURVEYING, INC.

P.O. BOX 148
 FUQUAY-VARINA, NC 27526
 (919) - 567-1963

PLOT PLAN
 FOR
D.R. HORTON

MORGAN NORTH
LOT 49
 62 FARM POND CIRLCE
 NORTH CAROLINA

HARNETT CO. HECTOR'S CREEK TWSHP

DRAWN BY NMF

DATE 5/7/21

CHECKED BY MPG

SCALE 1" = 40'