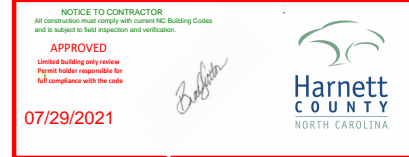




# SOUTHPORT



## SOUTHPORT REVISION LIST - STRUCTURAL:

- 1.) COMBINED WILMINGTON AND WILMINGTON II PLANS. (2-18)
- 2.) ADDED BRICK OPTION ON SECOND FLOOR. (2-18)
- 3.) CALLED OUT SERIES/SPACING OF JOISTS ON BASEMENT. (2-18)
- 4.) 2018 NCRC UPDATE (6-19)
- 5.) 2018 SC IRC (2-15-20)
- 6.) ADDED ELEVATION A.2 (BRICK WATERTABLE W/ SIDING ABOVE) & ELEVATION A.3 (STONE WATERTABLE W/ SIDING ABOVE). (2-15-20)

## SOUTHPORT REVISION LIST - ARCHITECTURAL:

- 1.) STAIR TREADS CHANGED TO 10" (6-14)
  - 2.) REPLACED CASUAL DINING FLUSH MOUNT FIXTURE WITH (2) CAN LIGHTS (9-14)
  - 3.) ADDED WATER TABLE OVER GARAGE DOOR (1-15)
  - 4.) ADDED OPTION FOR (2) 80 70 GARAGE DOORS (1-15)
  - 5.) ADDED OPTION FOR 120 DEEP COVERED PORCH. CHANGED ROOF FROM SHED TO GABLE (1-15)
  - 6.) ADDED THIS COVER SHEET (9-14-17). COPIED INFORMATION ABOVE FROM H&H COVER SHEET (9-17)
  - 7.) SHOWED DROPPED CEILING UNDER STAIRS AT 8'-6" TO ACCOMMODATE FLUSH MOUNT LIGHT (9-17)
  - 8.) INCREASED DEPTH OF WALL BETWEEN MASTER TUB AND SHOWER BY 6" (9-17)
  - 9.) MOVED LVP TO COAT CLOSET OFF OF FOYER (9-17)
  - 10.) CHANGED FLUSH MOUNT LIGHT OVER KITCHEN ISLAND TO PENDANT LIGHT AND ADDED SWITCH AT STAIR WALL (9-17)
  - 11.) ADDED SWITCH TO FAMILY ROOM LIGHT AT STAIR WALL (9-17)
  - 12.) ADDED EXTERIOR WALL MOUNT LIGHTS AT OPT. GARAGE PEDESTRIAN DOORS (9-17)
  - 13.) ADDED LIGHT SWITCH TO MEDIA ROOM OUTSIDE OF DOOR IN HALLWAY (9-17)
  - 14.) MOVED SWITCHES FOR FAN, TUB AND SHOWER LIGHT IN MASTER BATH (9-17)
  - 15.) UPDATED CUTSHEETS TO NEW FORMAT (9-17)
  - 16.) COMBINED WILMINGTON AND WILMINGTON-II (BASEMENT). (2-18)
  - 17.) ADDED ALL BRICK OPTION (A, B AND C ELEVATIONS). (2-18)
  - 18.) ADDED THREE CAR GARAGE OPTION. (2-18)
  - 19.) UPDATED/ ADDED CUTSHEETS. (2-18)
  - 20.) ADDED GOURMET KITCHEN OPTION. (2-18)
  - 21.) CHANGED FIREPLACE FROM 36" TO 32" (3-19)
  - 22.) MISC. FLOOR PLAN CHANGES AND 2018 CODE UPDATE (9-16-19)
  - 23.) VERIFIED GOURMET KITCHEN WAS ADDED. (12-19)
  - 24.) CHANGED FIREPLACE FROM STANDARD TO OPTIONAL. (12-19)
  - 25.) REMOVE GLASS INSERTS FROM GARAGE WINDOWS AND REMOVE METAL ACCESSORIES. (12-19)
  - 26.) ADDED ELEVATION A.2 (BRICK WATERTABLE W/ SIDING ABOVE) & ELEVATION A.3 (STONE WATERTABLE W/ SIDING ABOVE). (2-15-20)
  - 27.) UPDATED CUTSHEETS. (2-17-20)
  - 28.) UPDATED SQUARE FOOTAGES FOR ALL ELEVATIONS (2-17-20)
- 1.) MOVED THE WALL BETWEEN THE HALL AND THE OWNER'S BEDROOM BACK 2" TO MEET CODE REQUIREMENTS FOR THE HALL WIDTH. (10-5-20)
  - 2.) CHANGED THE STUDY DOOR OPTION FROM A 3/0 BISHWING DOOR TO THE 2-3/0 DOORS.

OKM 080 Bumpin Modified Plan

COVER SHEET

H&H HOMES  
SOUTHPORT

DATE: FEBRUARY 14, 2018  
 REV.: OCTOBER 5, 2020  
 DRAWN BY:  
 ENGINEERED BY:  
 REVIEWED BY:

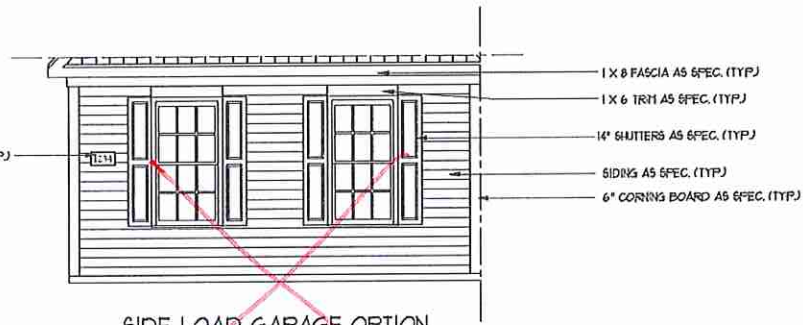
CS

*add glass + hardware*

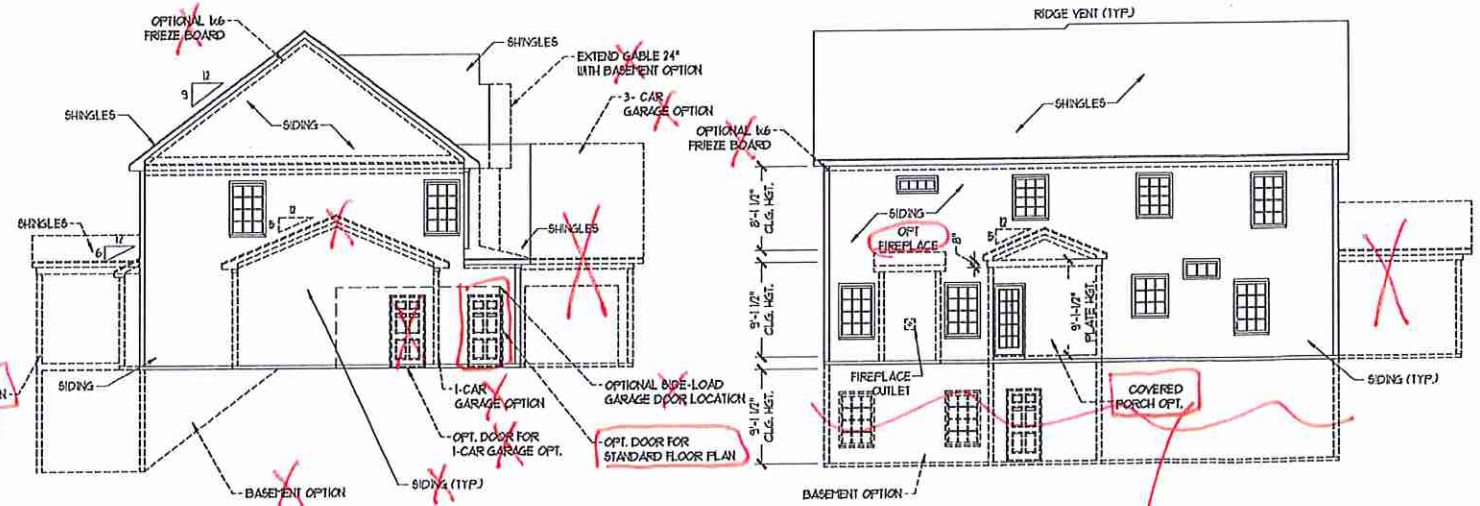


FRONT ELEVATION-A  
SCALE: 1/4" = 1'-0"

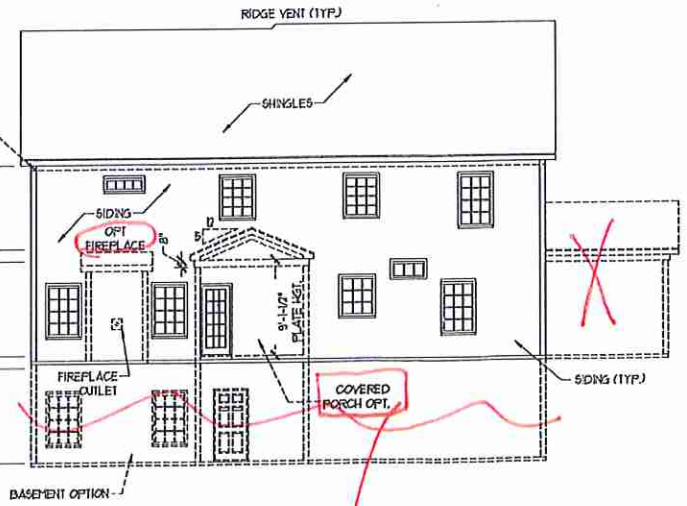
*No grids*



SIDE LOAD GARAGE OPTION  
(NOT AVAILABLE WITH OPTIONAL 1-CAR GARAGE)  
SCALE: 1/4" = 1'-0"

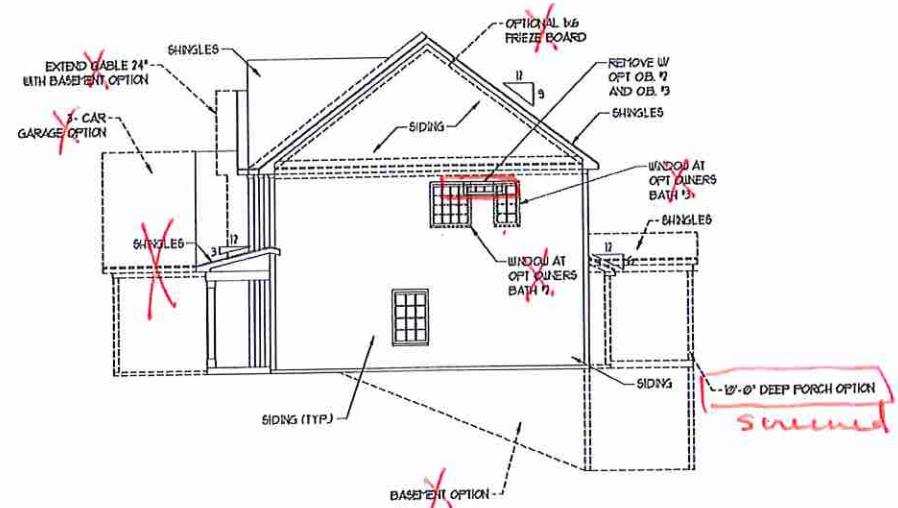


RIGHT ELEVATION  
SCALE: 1/8" = 1'-0"



REAR ELEVATION  
SCALE: 1/8" = 1'-0"

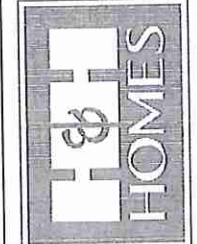
*screened*



LEFT ELEVATION  
SCALE: 1/8" = 1'-0"

*12'-0\"/>*

**J.S. THOMPSON ENGINEERING, INC.**  
100 W. WARE AVE., SUITE 104  
RALEIGH, NC 27605  
PHONE: (919) 780-9911  
FAX: (919) 289-9421  
N.C. LICENSE NO. C-1733



PERMISSIONS, INCENTIVES, FEATURES, FINISHES, MATERIALS, DIMENSIONS, WEIGHTS AND DIMENSIONS ARE SUBJECT TO CHANGE WITHOUT NOTICE. CONSTRUCTION, ACTUAL POSITION OF HOUSE ON LOT, AND FINISHES ARE TO BE DETERMINED BY THE ARCHITECT. ALL CONCEPTS, FLOOR PLANS ARE THE COPYRIGHTED PROPERTY OF H&H HOMES. ANY USE, REPRODUCTION, OR DISTRIBUTION OF THIS DOCUMENT FOR ANY PROJECT OTHER THAN THAT SPECIFICALLY IDENTIFIED FOR CURRENT DETAILS, COPYRIGHT © 2018 H&H HOMES

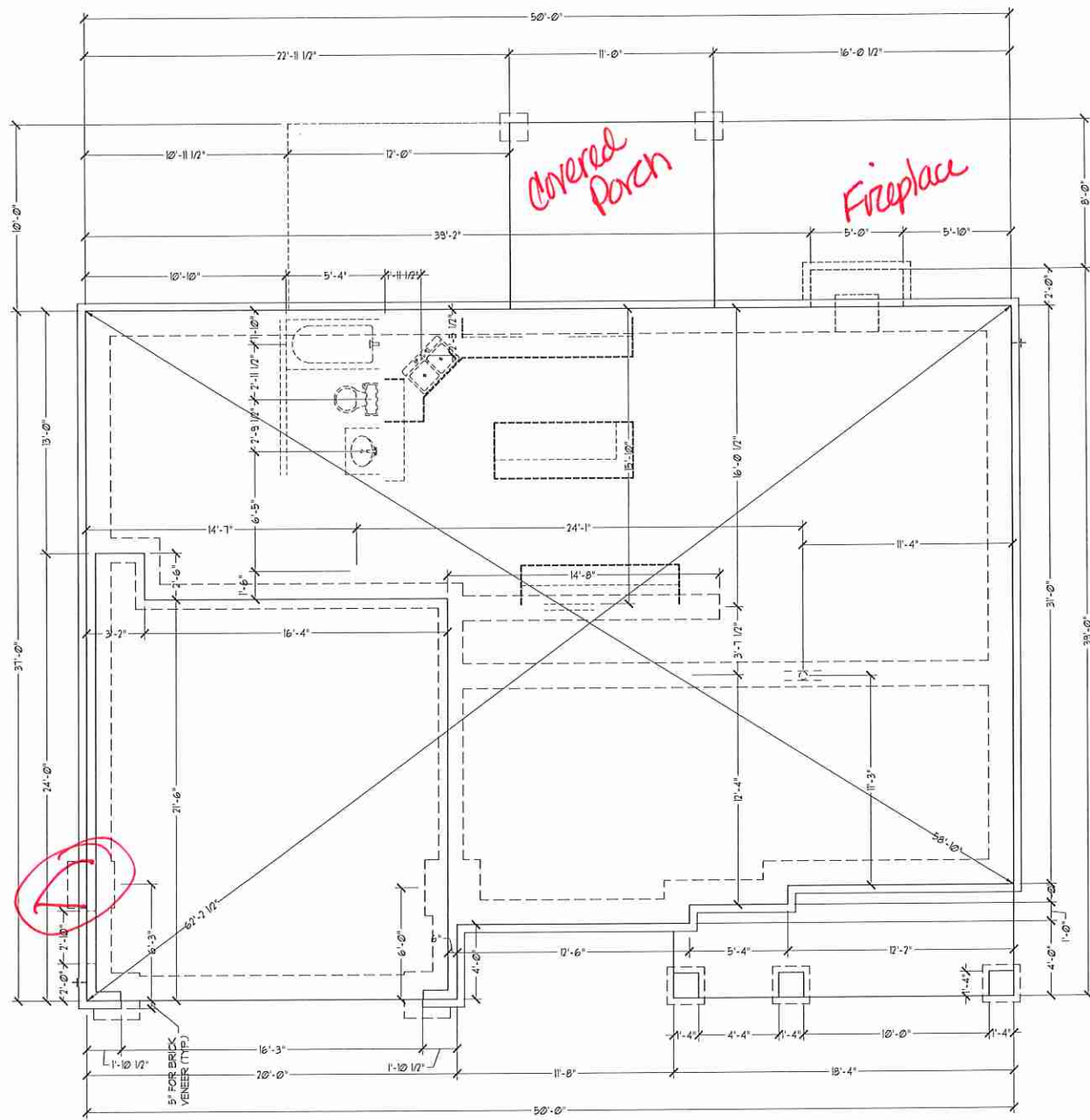
H&H HOMES, INC.  
SOUTHPORT

DATE: FEBRUARY 12, 2018  
REV: OCTOBER 15, 2020  
SCALE: AS NOTED  
DRAWN BY:  
ENGINEERED BY: WLF  
REVIEWED BY: CIB

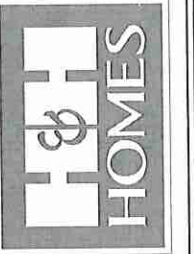
ELEVATIONS - A  
A-1

JRH

*MJH*



**J.S. THOMPSON  
ENGINEERING, INC.**  
406 WADE AVE. SUITE 104  
RALEIGH, NC 27605  
PHONE: (919) 760-9919  
FAX: (919) 780-9921  
N.C. LICENSE NO. C4133



PRICES, PROMOTIONS, INCENTIVES, FEATURES,  
OPTIONS, FLOOR PLANS, ELEVATIONS, DESIGN  
CONCEPTS, MATERIALS, FINISHES, DIMENSIONS  
AND DIMENSIONS ARE ESTIMATED AND MAY VARY IN ACTUAL  
CONSTRUCTION. ACTUAL POSITION OF HOUSE ON LOT  
WILL BE DETERMINED BY THE SITE PLAN AND LOCAL  
REGULATIONS. FLOOR PLANS ARE THE COPYRIGHTED  
PROPERTY OF H&H HOMES. ANY USE, REPRODUCTION,  
ADAPTATION, OR DISPLAY OF THE PLANS IS STRICTLY  
PROHIBITED. © 2018 H&H HOMES

**H&H HOMES, INC.**  
SOUTHPORT

DATE: FEBRUARY 12, 2018  
REV.: OCTOBER 15, 2020  
SCALE: 1/4" = 1'-0"  
DRAWN BY:  
ENGINEERED BY: WLF  
REVIEWED BY: CBG

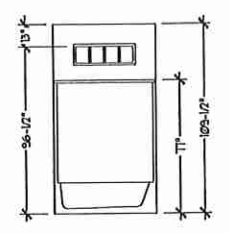
SLAB INTERFACE  
PLAN

A-3

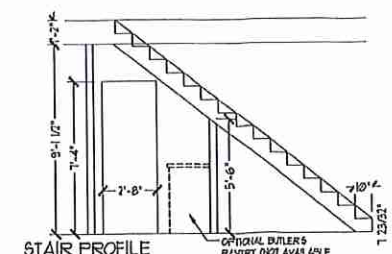
SQUARE FOOTAGE	
1st FLOOR:	1271 SQ. FT.
2nd FLOOR:	1601 SQ. FT.
TOTAL:	2872 SQ. FT.
FRONT PORCH:	103 SQ. FT.
51D. REAR PATIO:	110 SQ. FT.
GARAGE:	429 SQ. FT.

SQUARE FOOTAGE (OPTIONS)	
UNFINISHED BASEMENT:	1291 SQ. FT.
1st FLOOR (W/ BASEMENT):	1291 SQ. FT.
2nd FLOOR (W/ BASEMENT):	1621 SQ. FT.
1-CAR GARAGE:	740 SQ. FT.
3-CAR GARAGE:	609 SQ. FT.
OPT. PATIO/ DECK: (10'-0" DEEP):	120 SQ. FT.

**NOTE:** ALL EXTERIOR WALLS AND ATTIC WALLS ARE TO BE 2 x 6 @ 16" O.C. (UNO). 2 x 4 @ 16" O.C. EXTERIOR WALLS MAY BE CONSTRUCTED IN LIEU OF 2 x 6 WALLS (UNO). ALL INTERIOR LOAD BEARING WALLS ARE TO BE 2 x 4 @ 16" O.C. (UNO) AND NON-LOAD BEARING INTERIOR WALLS ARE TO BE 2 x 4 @ 24" O.C. (UNO).

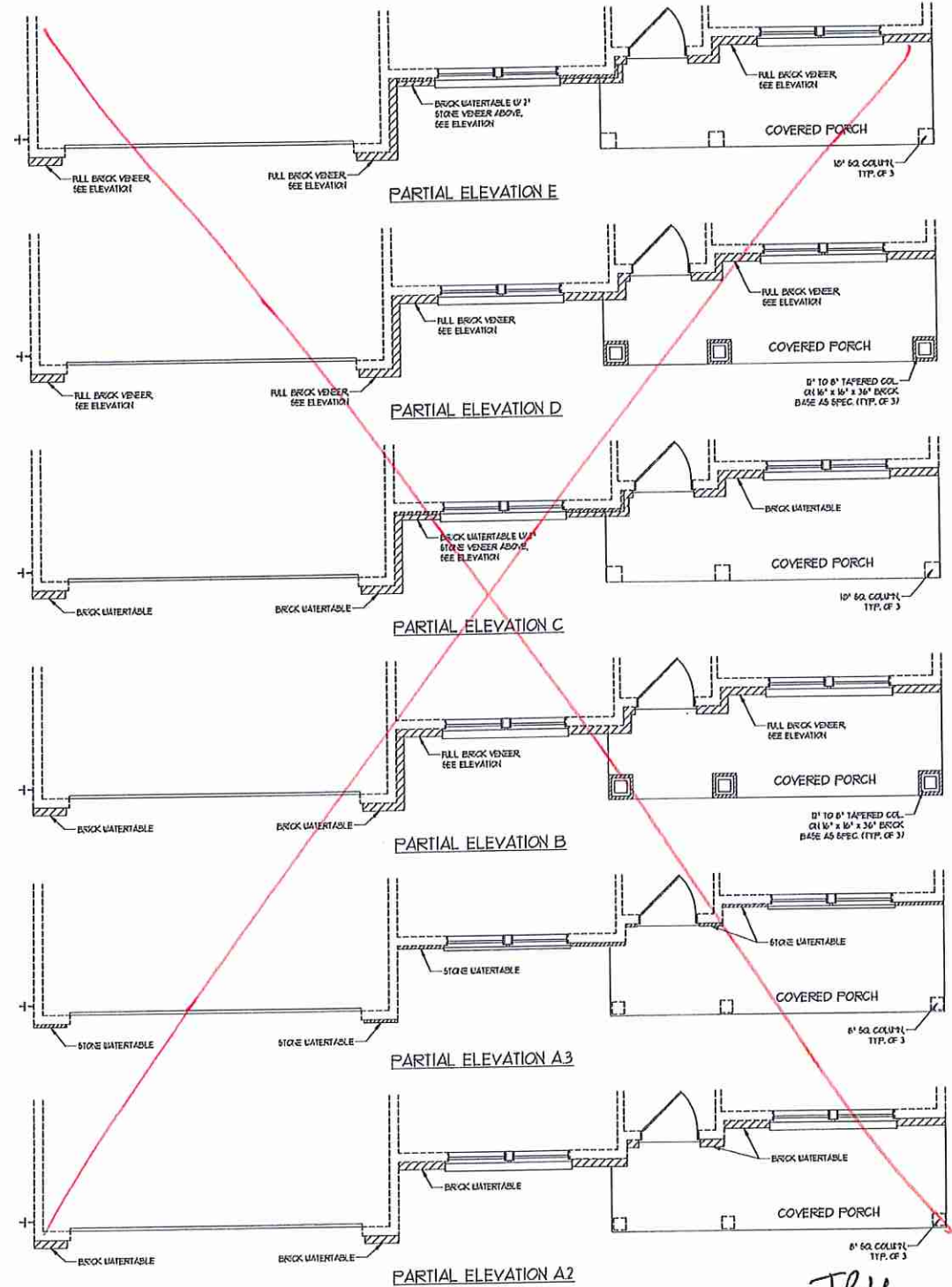
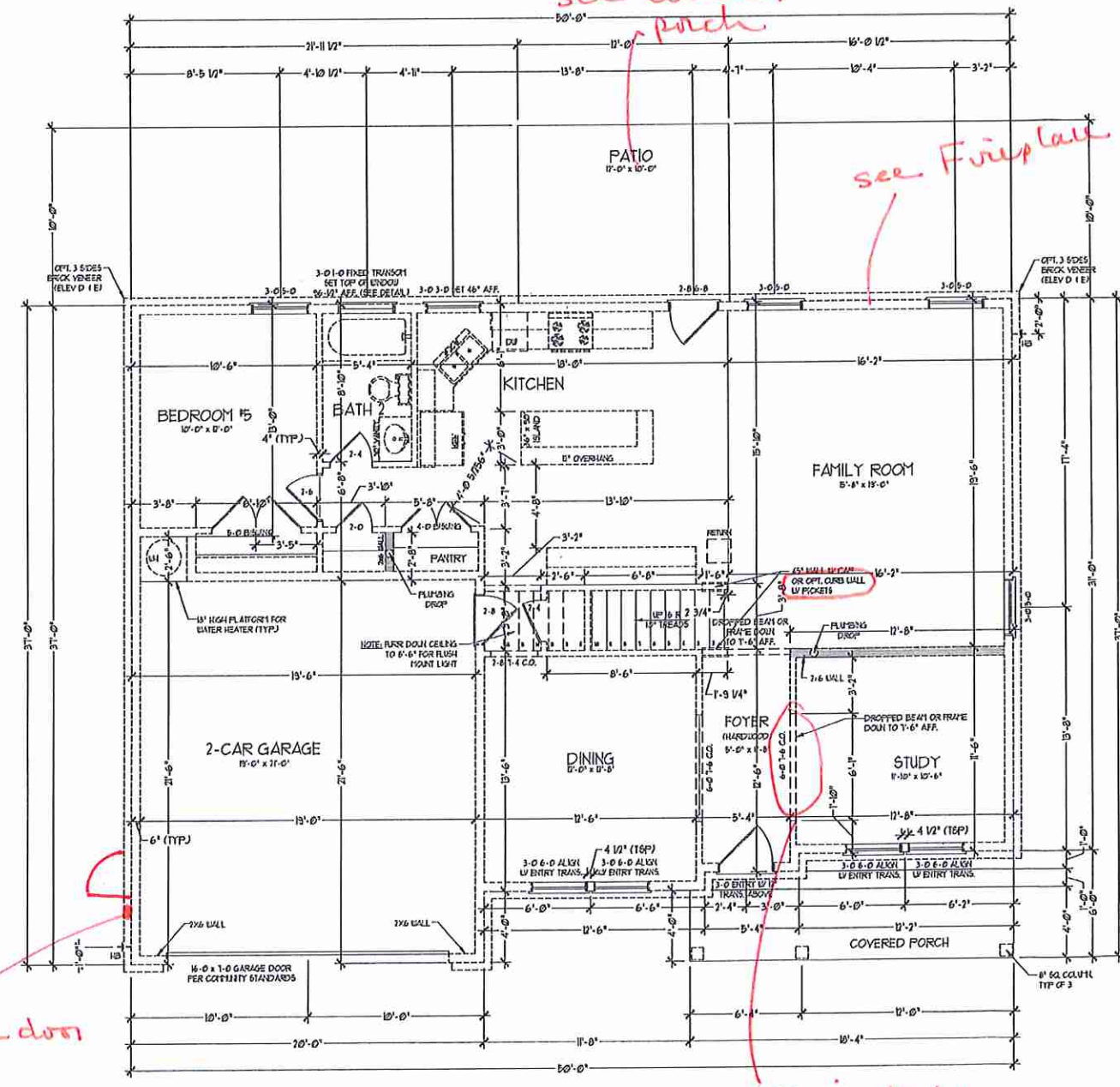


**BATHROOM TRANSOM WINDOW OVER TUB DETAIL**



**STAIR PROFILE**  
(FROM DINING ROOM)  
STANDARD STAIRS SHOWN  
OPT. TIGAL DULERS & PANTRY NOT AVAILABLE W/ OPT. BASEMENT

7x6 WALL  
\* SHADED WALLS ARE TO BE 2 x 6 @ 16" O.C. (LOAD BEARING) OR 2 x 6 @ 24" O.C. (NON-LOAD BEARING) REGARDLESS OF EXTERIOR WALL CONDITION



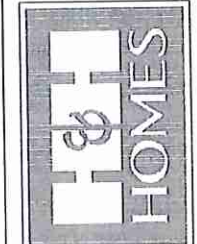
*garage  
swing door*

*interior double  
door*

*amg*

*JRH*

**J.S. THOMPSON  
ENGINEERING, INC.**  
100 W. WARE AVE., SUITE 104  
RALEIGH, NC 27605  
PHONE: (919) 289-9916  
FAX: (919) 289-9921  
NC LICENSE NO. C-13131

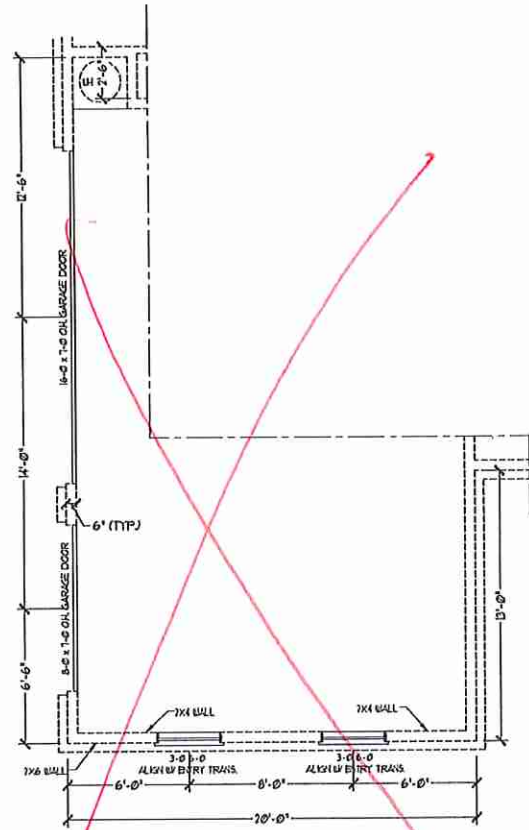


PHOTOS, PROMOTIONS, RESOURCES, FEATURES, OPTIONS, FLOOR PLANS, ELEVATIONS, RESOURCES, MATERIALS AND DIMENSIONS ARE SUBJECT TO CHANGE WITHOUT NOTICE AND MAY VARY IN ACTUAL CONSTRUCTION. ACTUAL POSITION OF HOUSE ON LOT WILL BE DETERMINED BY THE SITE PLAN AND LOT PLACED. CONSTRUCTION OF HOUSE IS THE RESPONSIBILITY OF THE HOMEOWNER. ELEVATION PLANS ARE THE COPYRIGHTED PROPERTY OF H&H HOMES. ANY USE, REPRODUCTION, ADAPTATION, OR DISPLAY OF THE PLANS IS STRICTLY PROHIBITED. CURRENT DETAILS, COPYRIGHT © 2018 H&H HOMES

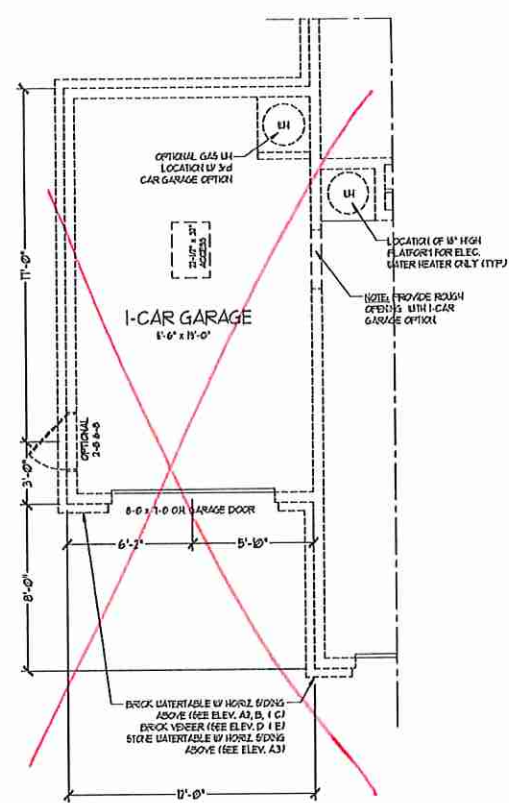
**H&H HOMES, INC.**  
SOUTHPORT

DATE: FEBRUARY 12, 2018  
REV.: OCTOBER 15, 2020  
SCALE: 1/4" = 1'-0"  
DRAWN BY:  
ENGINEERED BY: WLF  
REVIEWED BY: CBG

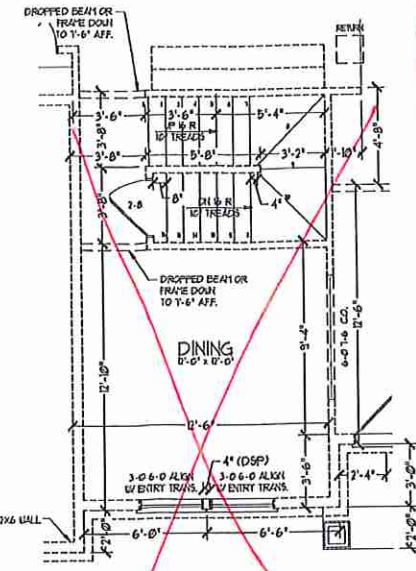
FIRST FLOOR  
PLAN  
A-5



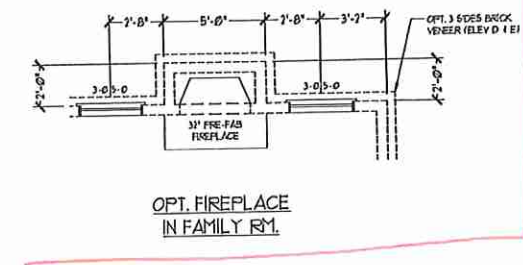
3-CAR SIDELOAD GARAGE OPTION  
(NOT AVAILABLE WITH OPTIONAL ONE-CAR GARAGE)



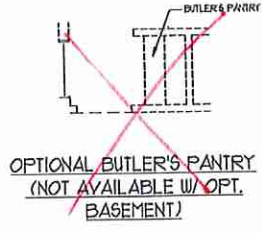
1-CAR GARAGE OPTION  
(NOT AVAILABLE WITH OPTIONAL SIDELOAD GARAGES)



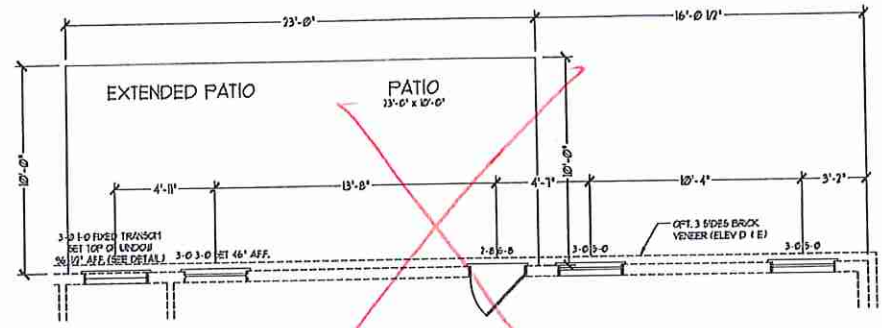
FF STAIRS  
W/ BASEMENT OPTION



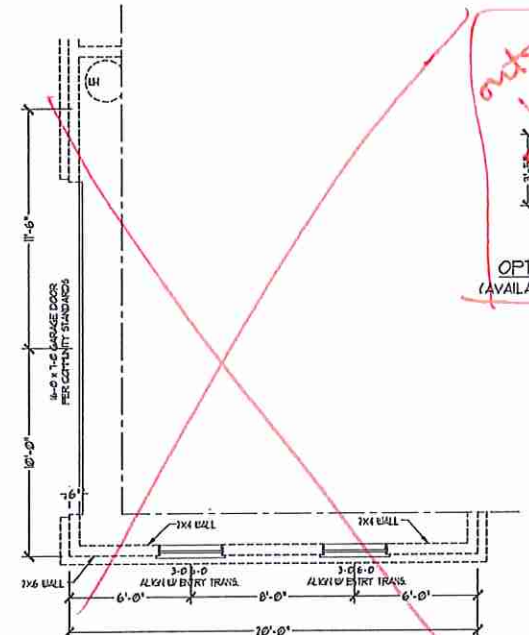
OPT. FIREPLACE  
IN FAMILY RM.



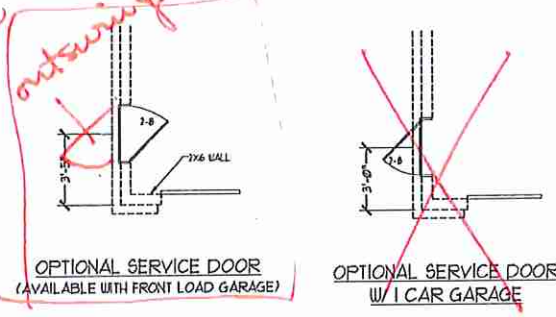
OPTIONAL BUTLER'S PANTRY  
(NOT AVAILABLE W/ OPT. BASEMENT)



OPTIONAL EXTENDED PATIO

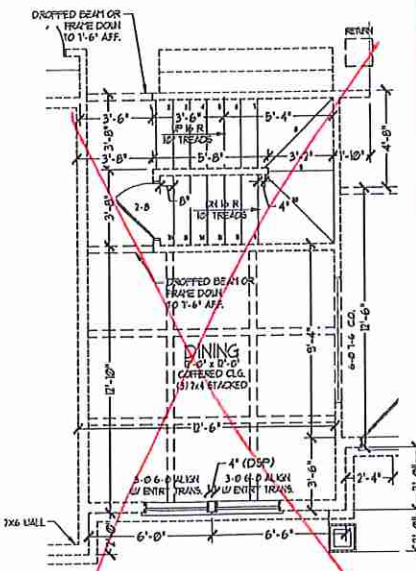


SIDE-LOAD GARAGE OPTION  
(NOT AVAILABLE WITH OPTIONAL ONE-CAR GARAGE)

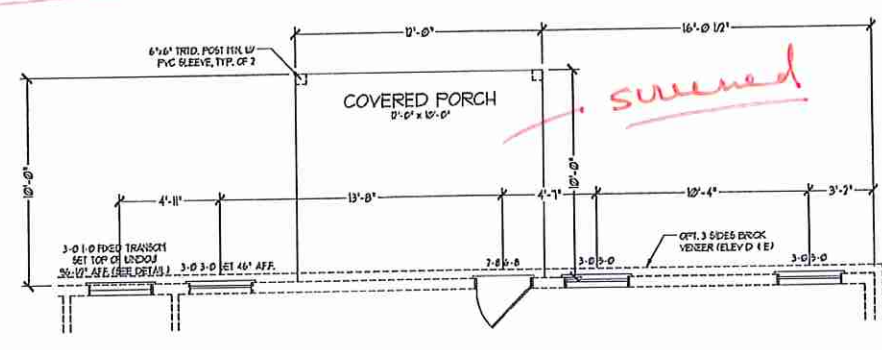


OPTIONAL SERVICE DOOR  
(AVAILABLE WITH FRONT LOAD GARAGE)

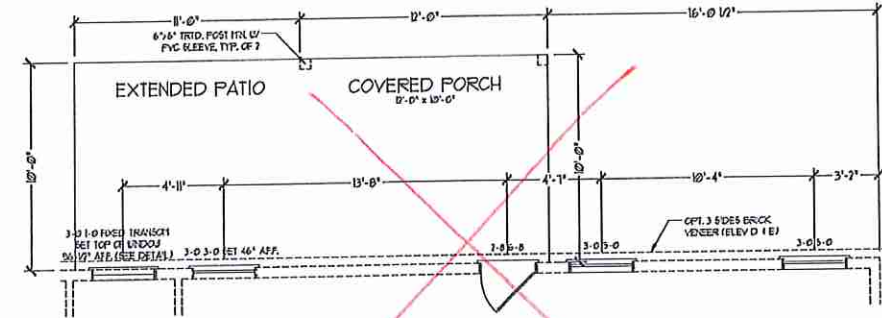
OPTIONAL SERVICE DOOR  
W/ 1 CAR GARAGE



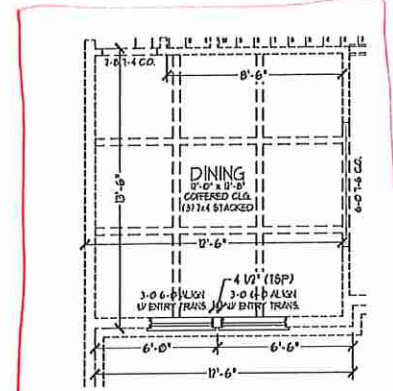
OPTIONAL DINING ROOM  
COFFERED CEILING W/ BASEMENT



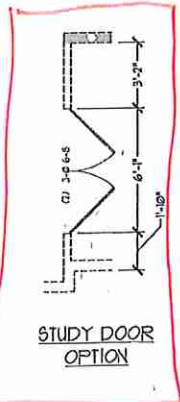
OPTIONAL COVERED PORCH



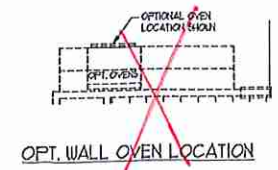
OPTIONAL COVERED PORCH  
W/ EXTENDED PATIO



OPTIONAL DINING ROOM  
COFFERED CEILING W/O BASEMENT



STUDY DOOR  
OPTION

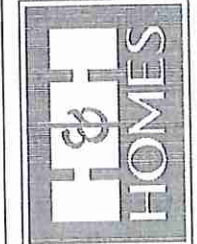


OPT. WALL OVEN LOCATION



OPT. DESK LOCATION

J.S. THOMPSON  
ENGINEERING, LTD.  
100 VALLEY AVE., SUITE 104  
RALEIGH, NC 27605  
PHONE: (919) 780-9919  
FAX: (919) 780-9921  
N.C. LICENSE NO. C-1733



PLEASE CONSULT THE ARCHITECT FOR ALL DIMENSIONS, MATERIALS AND FINISHES. DIMENSIONS AND FINISHES ARE BASED ON THE LATEST REVISIONS AND MAY VARY IN ACTUAL CONSTRUCTION. ACTUAL POSITION OF HOUSE ON LOT WILL BE DETERMINED BY SURVEY. DIMENSIONS ARE INTENT. CONCEPTS, FLOOR PLANS ARE THE COPYRIGHTED PROPERTY OF H&H HOMES, INC. ANY USE, REPRODUCTION, ADAPTATION, OR DISTRIBUTION OF THESE PLANS WITHOUT THE WRITTEN PERMISSION OF H&H HOMES, INC. IS PROHIBITED. CURRENT DETAILS, COPYRIGHT © 2018 H&H HOMES.

H&H HOMES, INC.  
SOUTHPORT

DATE: FEBRUARY 12, 2018  
REV.: OCTOBER 15, 2020  
SCALE: 1/4" = 1'-0"  
DRAWN BY:  
ENGINEERED BY: WLF  
REVIEWED BY: CBO

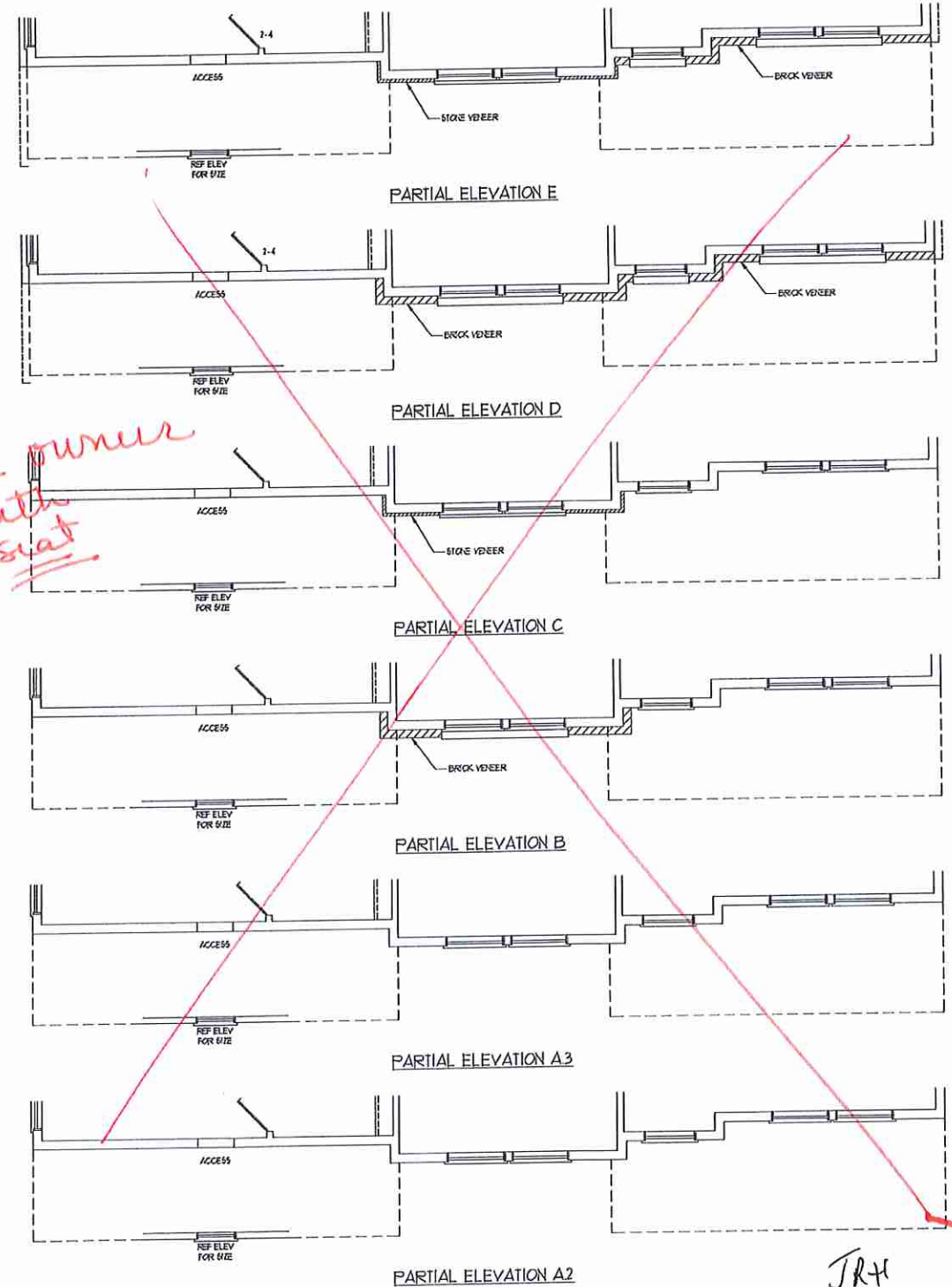
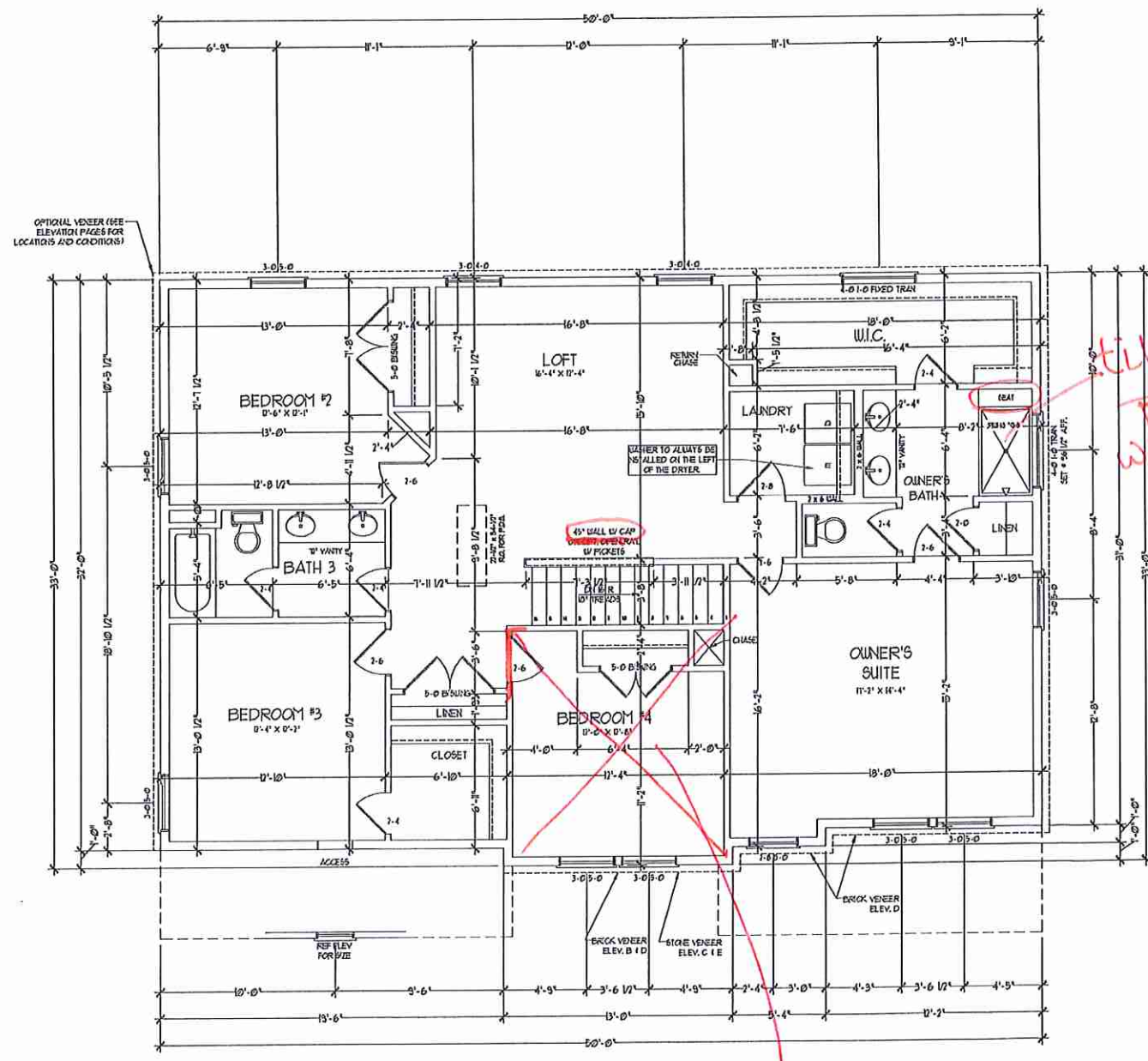
FIRST FLOOR  
PLAN OPTIONS  
A-5.1

JRH

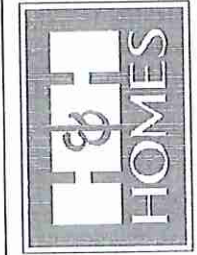
AMJ

NOTE: ALL EXTERIOR WALLS AND ATTIC WALLS ARE TO BE 2 x 6 @ 16" O.C. (UNO). 2 x 4 @ 16" O.C. EXTERIOR WALLS MAY BE CONSTRUCTED IN LIEU OF 2 x 6 WALLS (UNO). ALL INTERIOR LOAD BEARING WALLS ARE TO BE 2 x 4 @ 16" O.C. (UNO) AND NON-LOAD BEARING INTERIOR WALLS ARE TO BE 2 x 4 @ 24" O.C. (UNO).

2x6 WALL  
 \* SHADED WALLS ARE TO BE 2 x 6 @ 16" O.C. (LOAD BEARING) OR 2 x 6 @ 24" O.C. (NON-LOAD BEARING) REGARDLESS OF EXTERIOR WALL CONDITION



J.S. THOMPSON ENGINEERING, INC.  
 100 S. W. 14th Ave., Suite 100  
 Raleigh, NC 27605  
 PHONE: 919.286.9119  
 FAX: 919.286.9033  
 NC LICENSE NO. C1733



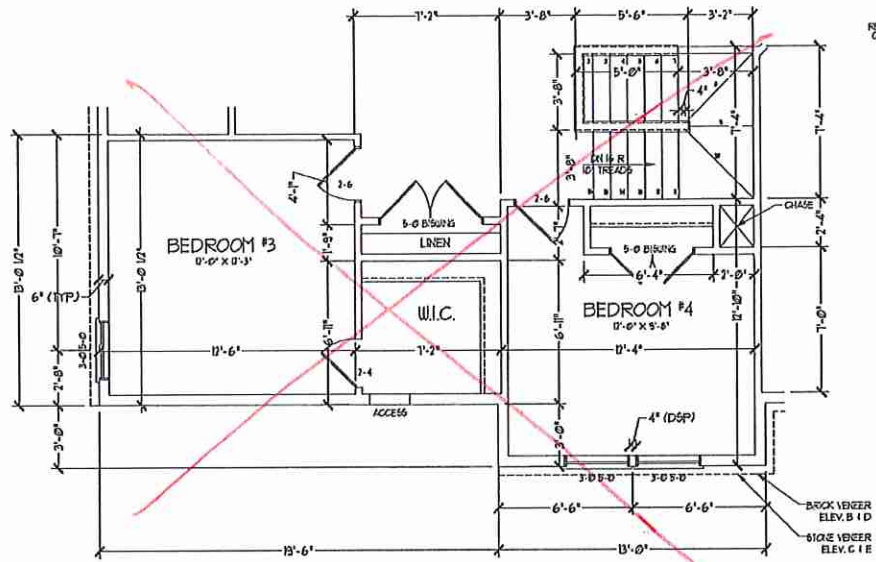
PRICES, PROMOTIONS, INCENTIVES, FEATURES, OPTIONS, FLOOR PLANS, ELEVATIONS, RESOURCES, MATERIALS AND DIMENSIONS ARE SUBJECT TO CHANGE WITHOUT NOTICE AND MAY VARY IN ACTUAL CONSTRUCTION. ACTUAL POSITION OF HOUSE ON LOT WILL BE DETERMINED BY THE SITE PLAN AND PLOTTING CONDITIONS. ALLER PLANS ARE THE COPYRIGHTED PROPERTY OF H&H HOMES. ANY USE, REPRODUCTION, ADAPTATION, OR DISPLAY OF THE PLANS IS STRICTLY PROHIBITED. © 2018 H&H HOMES

H&H HOMES, INC.  
 SOUTHPORT

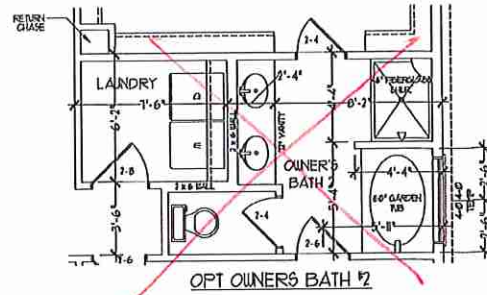
DATE: FEBRUARY 12, 2018  
 REV.: OCTOBER 15, 2020  
 SCALE: 1/4" = 1'-0"  
 DRAWN BY:  
 ENGINEERED BY: WLF  
 REVIEWED BY: CBG

SECOND FLOOR PLAN  
 A-6

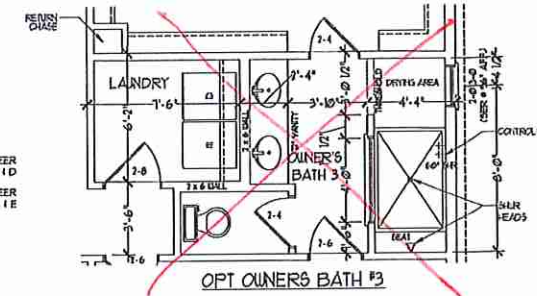
JRH



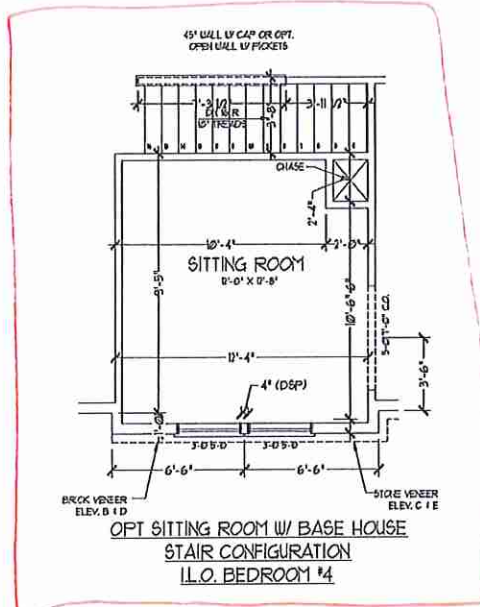
BEDROOM #4 OPTION  
(WITH OPTIONAL BASEMENT)



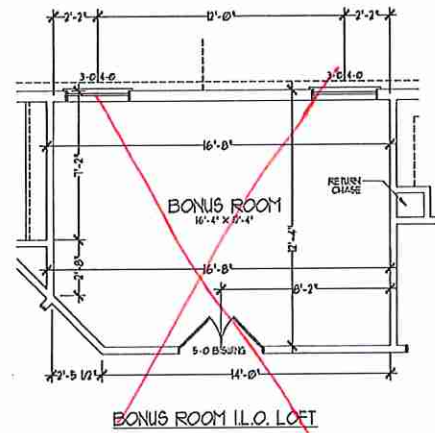
OPT OWNERS BATH #2



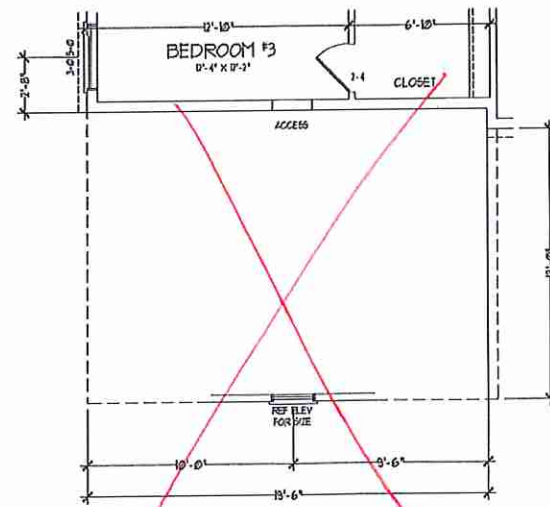
OPT OWNERS BATH #3



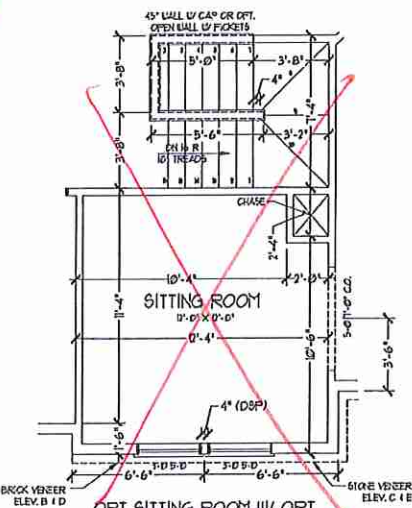
OPT SITTING ROOM W/ BASE HOUSE  
STAIR CONFIGURATION  
I.L.O. BEDROOM #4



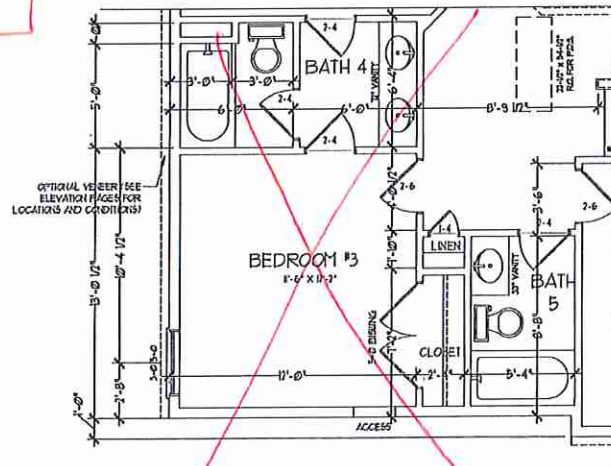
BONUS ROOM I.L.O. LOFT



OPT 3rd CAR SIDELOAD GARAGE

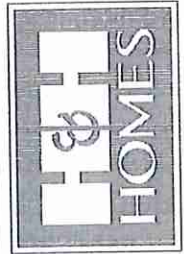


OPT SITTING ROOM W/ OPT  
BASEMENT STAIR CONFIGURATION  
I.L.O. BEDROOM #4



BEDROOM #3 W/ BATH 4 4 5 OPTION I.L.O. BATH #3

**J.S. THOMPSON**  
ENGINEERING, INC.  
100 W. WALKER AVE., SUITE 100  
RALEIGH, NC 27605  
PHONE: (919) 260-9919  
FAX: (919) 260-9251  
N.C. LICENSE NO. 54743



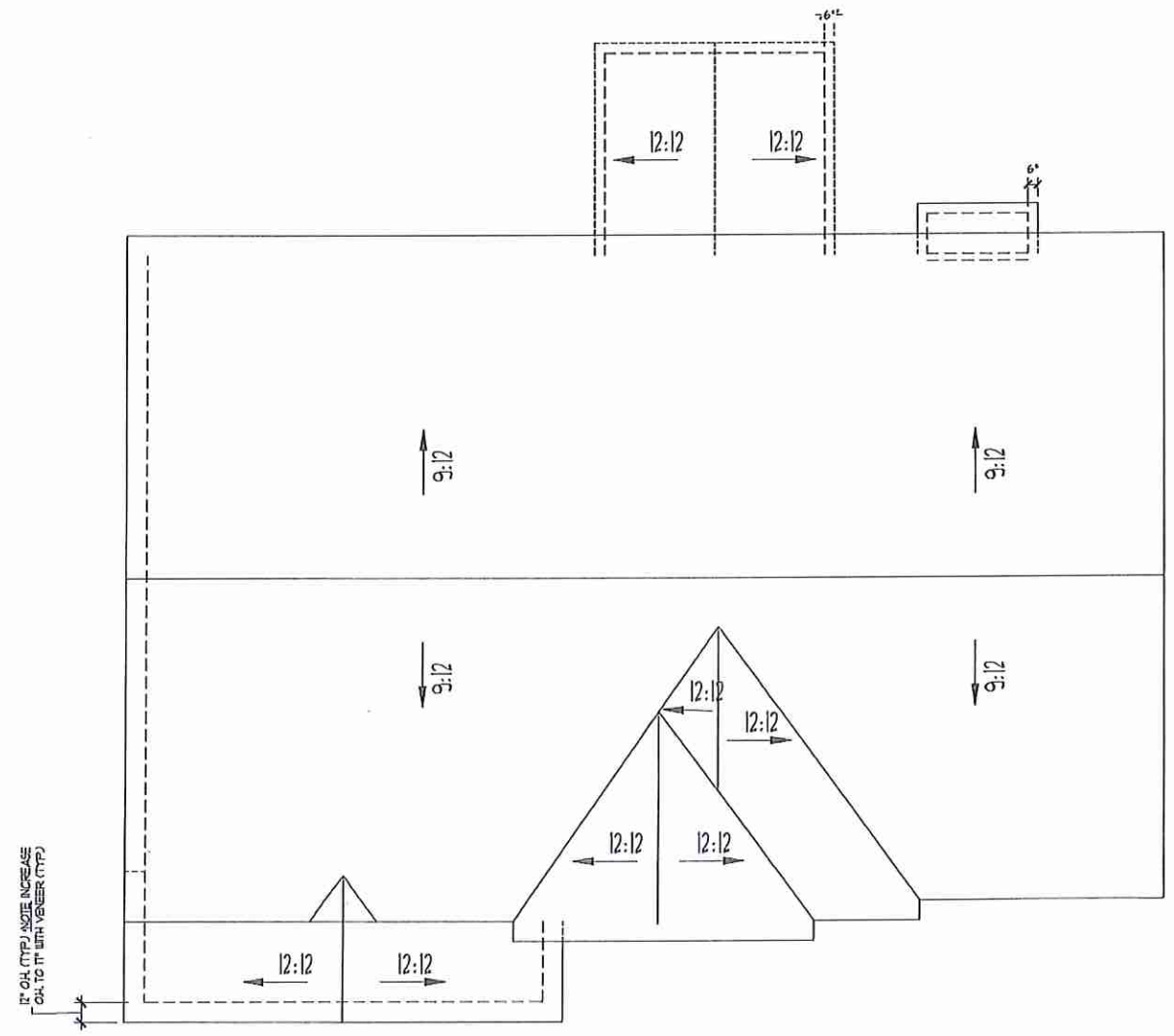
PROCES, PRODUCTIONS, INCENTIVES, FEATURES, MATERIALS AND FINISHES ARE SUBJECT TO CHANGE WITHOUT NOTICE. DIMENSIONS AND FINISHES ARE ESTIMATED AND MAY VARY IN ACTUAL CONSTRUCTION. ACTUAL POSITION OF HOUSE ON LOT WILL BE DETERMINED BY THE SITE PLANNING AND LAYOUT CONCEPTS. FLOOR PLANS ARE THE COPYRIGHTED PROPERTY OF H&H HOMES, INC. ANY USE, REPRODUCTION, OR ALTERATION OF THESE PLANS WITHOUT THE WRITTEN PERMISSION OF H&H HOMES, INC. IS PROHIBITED. COPYRIGHT © 2018 H&H HOMES

H&H HOMES, INC.  
SOUTHPORT

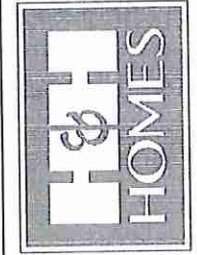
DATE: FEBRUARY 12, 2018  
REV.: OCTOBER 15, 2020  
SCALE: 1/4" = 1'-0"  
DRAWN BY:  
ENGINEERED BY: WLF  
REVIEWED BY: CBO

SECOND FLOOR  
PLAN OPTIONS  
A-6.1

JRH



**J.S. THOMPSON**  
**ENGINEERING, INC.**  
 100 N. VALE AVE., SUITE 104  
 RALEIGH, NC 27605  
 PHONE: (919) 780-9749  
 FAX: (919) 781-9231  
 S.C. LICENSE NO. C-4133



PRICES, PROVISIONS, INCLUSIVES, FEATURES, OPTIONS, FLOOR PLANS, ELEVATIONS, ESDS, AND FINISHES ARE SUBJECT TO CHANGE WITHOUT NOTICE. SQUARE FOOTAGE AND DIMENSIONS ARE ESTIMATED AND MAY VARY IN ACTUAL CONSTRUCTION. ACTUAL POSITION OF HOUSE ON LOT MAY VARY FROM SHOWN. DIMENSIONS ARE INTENT. FLOOR PLANS AND ELEVATION DRAWINGS ARE ARTIST CONCEPTIONS. FLOOR PLANS ARE THE COPYRIGHTED PROPERTY OF H&H HOMES. ANY USE, REPRODUCTION OR MODIFICATION OF THIS DRAWING WITHOUT THE WRITTEN PERMISSION OF H&H HOMES IS STRICTLY PROHIBITED. SEE H&H HOME SALES MANUAL FOR CURRENT DETAILS. COPYRIGHT © 2018 H&H HOMES

H&H HOMES, INC.  
 SOUTHPORT

DATE: FEBRUARY 12, 2018  
 REV.: OCTOBER 15, 2020  
 SCALE: 1/4" = 1'-0"  
 DRAWN BY:  
 ENGINEERED BY: WLF  
 REVIEWED BY: CBG

ROOF PLAN  
 ELEVATIONS  
 A&B

A-7

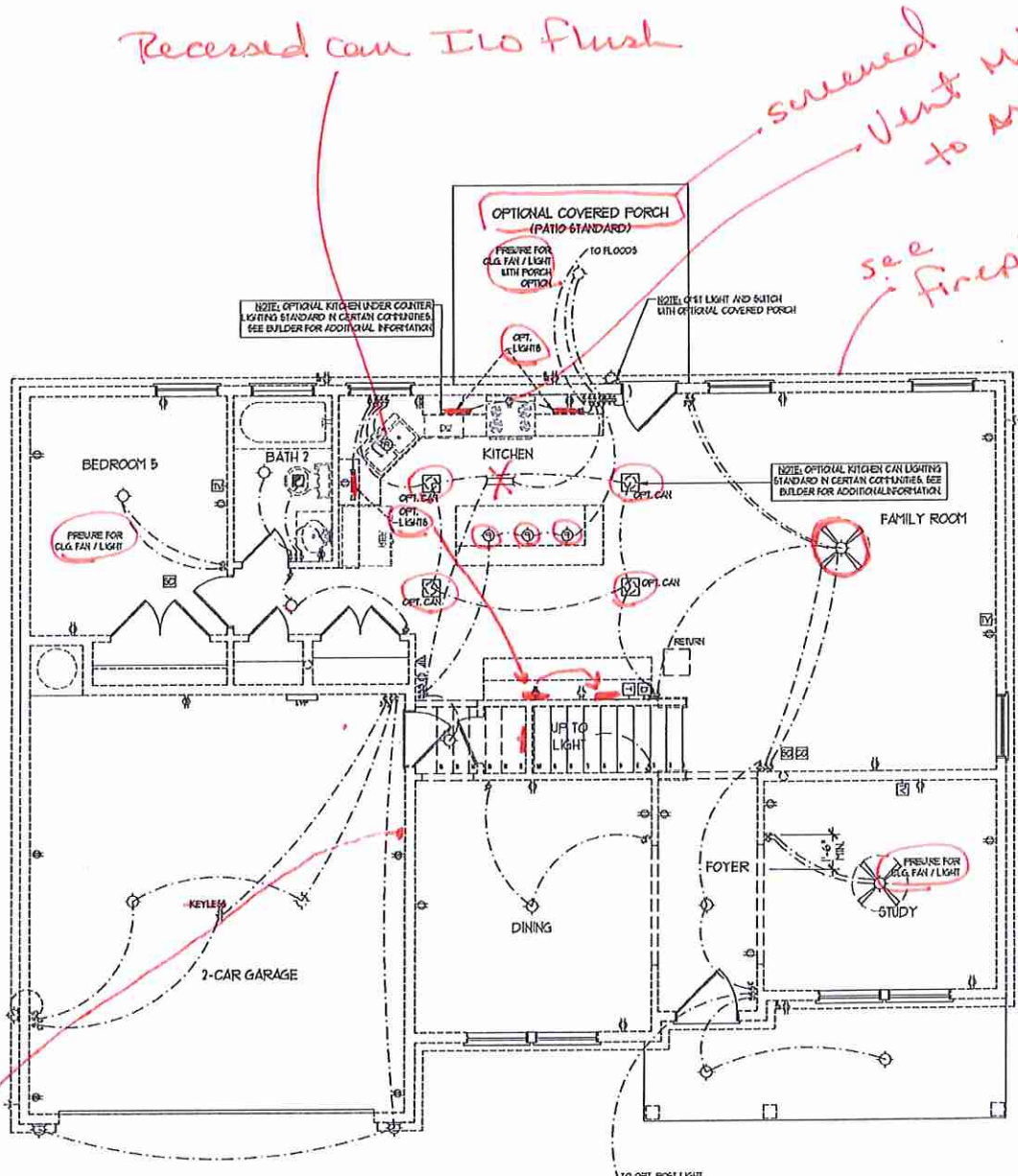


**ELECTRICAL LAYOUT NOTES:**

- 1) BLOCK AND USE FOR ALL CEILING FANS PER PLAN
- 2) VASTY LIGHTS TO BE SET 4' 60" AFF. (TYP.)
- 3) ADDITIONAL EXTERIOR OUTLETS REQUIRED BY CODE TO BE LOCATED BY ELECTRICAL
- 4) PLACE SWITCHES 6" FROM ROUGH OPENINGS

**ELECTRICAL LEGEND:**

- NO V. OUTLET
- NO V. GFI OUTLET
- NO V. SWITCHED OUTLET
- NO V. BASEBOARD OUTLET
- ⊕ 4-FLEX
- COUNTER OR FLOOR MOUNTED
- COUNTER OR FLOOR MOUNTED TOY GFI
- ⊕ LEATHERPROOF
- 110 V. OUTLET
- 110 V. DEDICATED CIRCUIT
- 110 V. DEDICATED CIRCUIT
- ⊕ SPECIAL PURPOSE (110 V., ETC.)
- WALL MOUNT LIGHT
- CEILING MOUNT LIGHT
- PENDANT LIGHT
- RECESSED CAN LIGHT
- MINI CAN LIGHT
- EYEBALL LIGHT
- FLUORESCENT LIGHT
- UNDERCABINET LIGHT
- FLOOD LIGHT
- ⊕ SWITCH
- ⊕ 3-WAY SWITCH
- ⊕ 4-WAY SWITCH
- ⊕ DIMMER SWITCH
- △ TELEPHONE
- ⊕ TV CONNECTION
- ⊕ CIRCUIT FOR COMPONENT WIRING
- ⊕ SPEAKER
- ⊕ DOORBELL CHIME
- ⊕ THERMOSTAT
- ⊕ 110 V. SMOKE DETECTOR
- ⊕ CARBON MONOXIDE DETECTOR
- ⊕ EXHAUST FAN
- ⊕ LOW VOLTAGE PANEL

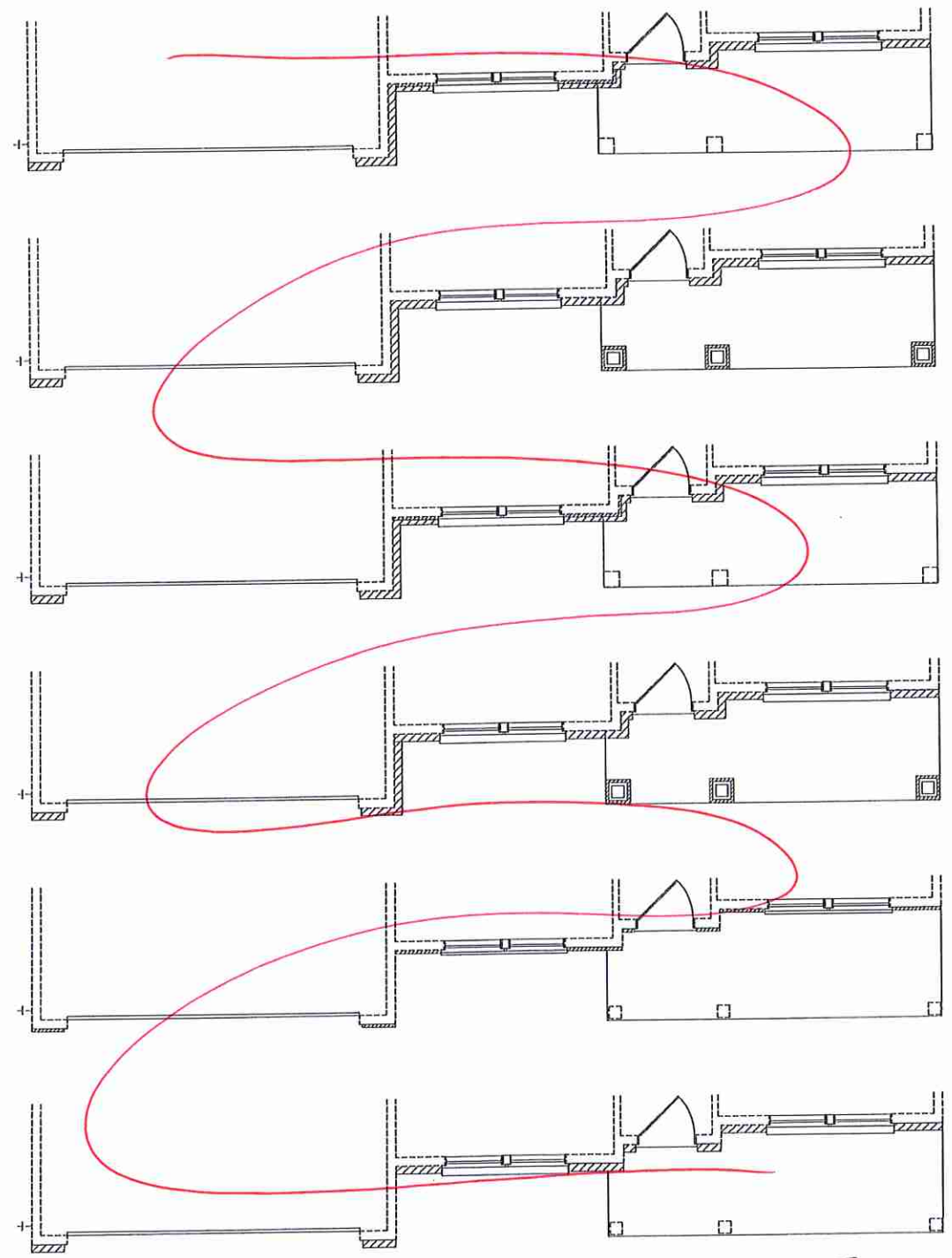


*Recessed can I/O flush*

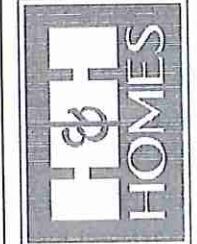
*screened Vent M.W. to exterior*

*see fireplace*

*Dedicated 110V GFCI*



**J.S. THOMPSON ENGINEERING, INC.**  
 100 W. WALKER AVE., SUITE 104  
 RALEIGH, NC 27609  
 PHONE: (919) 286-8919  
 FAX: (919) 279-9231  
 N.C. LICENSE NO. C-113



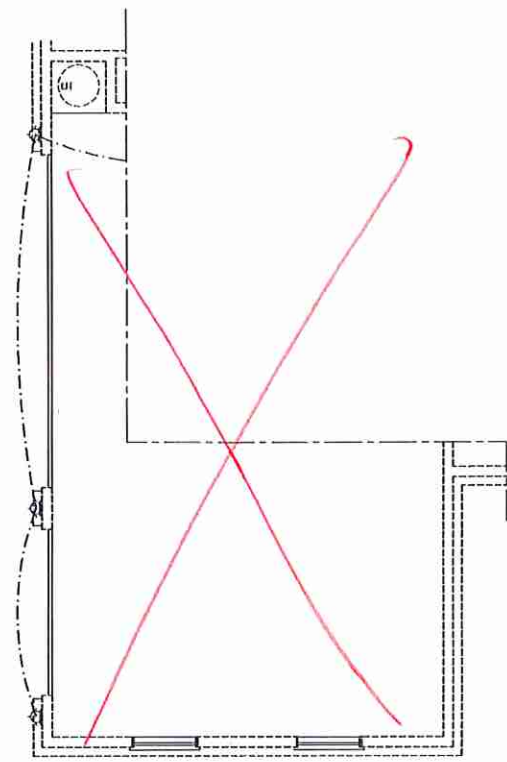
PRICES, PRODUCTIONS, INCENTIVES, FEATURES, OPTIONS, FLOOR PLANS, ELEVATIONS, DESIGN, MATERIALS AND FINISHES ARE SUBJECT TO CHANGE WITHOUT NOTICE AND MAY VARY IN ACTUAL CONSTRUCTION. ACTUAL PORTION OF HOUSE ON LOT MAY VARY FROM THAT SHOWN ON THIS PLAN. ROOM SIZES AND ELEVATION DIMENSIONS ARE APPROXIMATE. CONCEPTS, FLOOR PLANS ARE THE COPYRIGHTED PROPERTY OF H&H HOMES, INC. ANY USE, REPRODUCTION, OR DISTRIBUTION OF THIS DOCUMENT WITHOUT THE WRITTEN PERMISSION OF H&H HOMES, INC. IS PROHIBITED. SEE H&H HOME SALES CONTRACT FOR CURRENT DETAILS. COPYRIGHT © 2018 H&H HOMES

**H&H HOMES, INC.**  
 SOUTHPORT

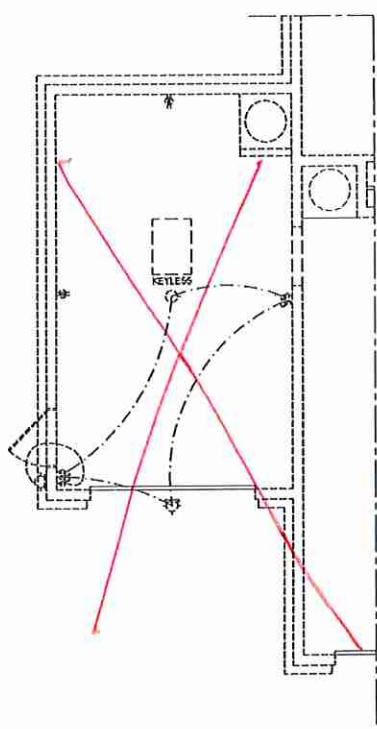
DATE: FEBRUARY 12, 2018  
 REV.: OCTOBER 15, 2020  
 SCALE: 1/4" = 1'-0"  
 DRAWN BY:  
 ENGINEERED BY: WLF  
 REVIEWED BY: CBG  
 FIRST FLOOR ELECTRICAL PLAN  
 E-1

JRH

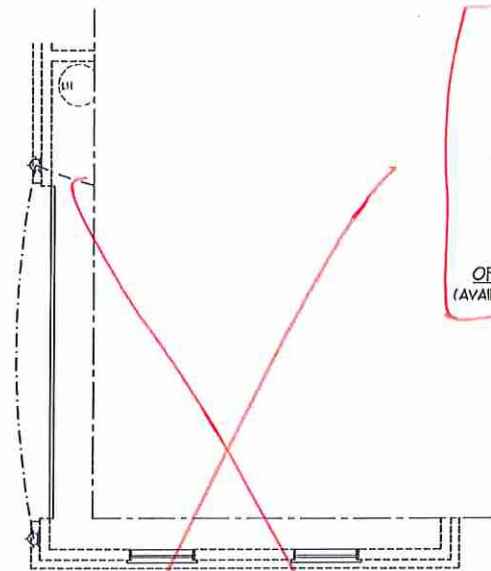
*WLF*



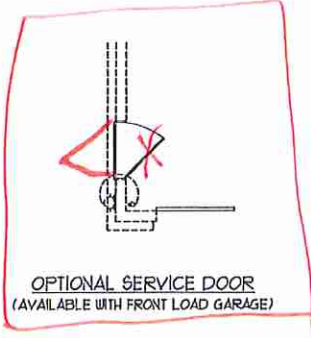
3-CAR SIDELOAD GARAGE OPTION  
(NOT AVAILABLE WITH OPTIONAL ONE-CAR GARAGE)



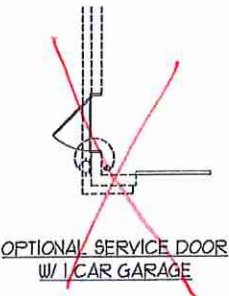
1-CAR GARAGE OPTION  
(NOT AVAILABLE WITH OPTIONAL SIDELOAD GARAGES)



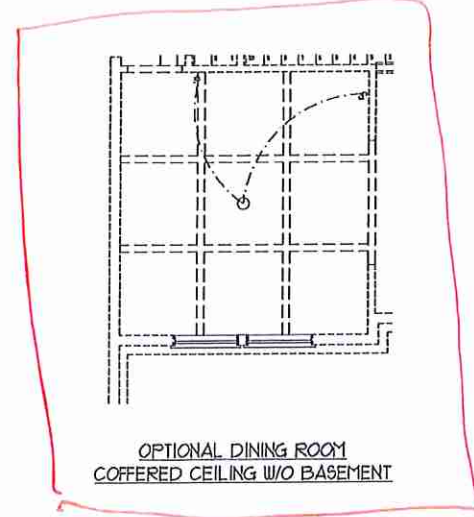
SIDE-LOAD GARAGE OPTION  
(NOT AVAILABLE WITH OPTIONAL ONE-CAR GARAGE)



OPTIONAL SERVICE DOOR  
(AVAILABLE WITH FRONT LOAD GARAGE)



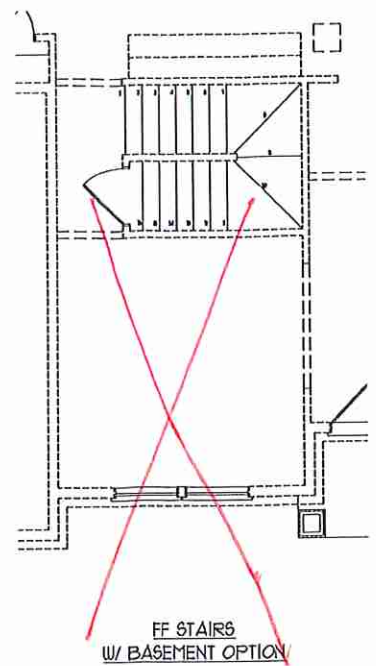
OPTIONAL SERVICE DOOR  
W/ 1-CAR GARAGE



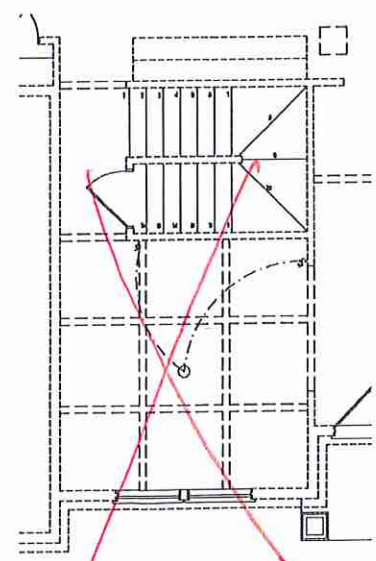
OPTIONAL DINING ROOM  
COFFERED CEILING W/O BASEMENT



STUDY DOOR  
OPTION



FF STAIRS  
W/ BASEMENT OPTION



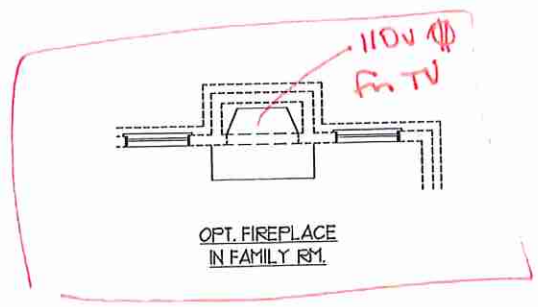
OPTIONAL DINING ROOM  
COFFERED CEILING W/ BASEMENT



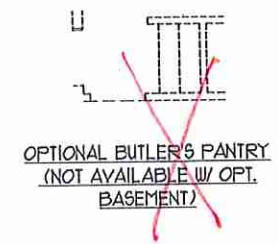
OPT. WALL OVEN LOCATION



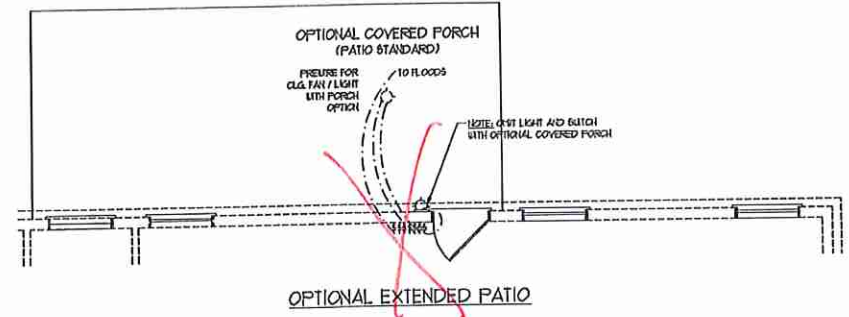
OPT. DESK LOCATION



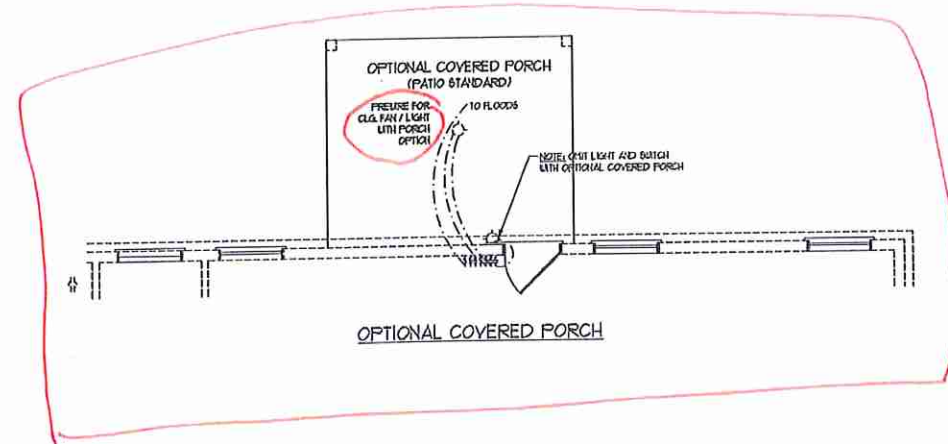
OPT. FIREPLACE  
IN FAMILY RM.



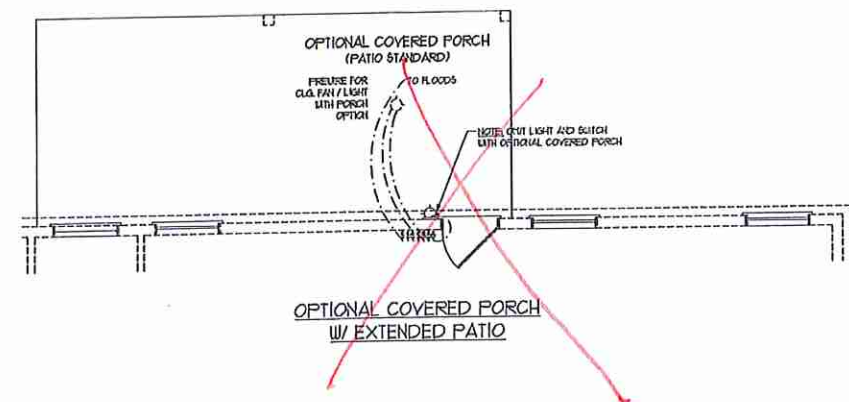
OPTIONAL BUTLER'S PANTRY  
(NOT AVAILABLE W/ OPT.  
BASEMENT)



OPTIONAL EXTENDED PATIO

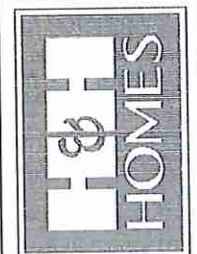


OPTIONAL COVERED PORCH



OPTIONAL COVERED PORCH  
W/ EXTENDED PATIO

**J.S. THOMPSON  
ENGINEERING, INC.**  
455 WALKER AVE., SUITE 104  
RALEIGH, NC 27605  
PHONE: 919 286-9910  
FAX: 919 286-9921  
NC LICENSE NO. C4131



PRICES, PROMOTIONS, IDENTITIES, FEATURES, OPTIONS, FLOOR PLANS, ELEVATIONS, CONCEPTS, CONSTRUCTION METHODS, MATERIALS, FINISHES, SQUARE FOOTAGE AND DIMENSIONS WITHOUT NOTICE. SQUARE FOOTAGE AND DIMENSIONS ARE ESTIMATED AND MAY VARY IN ACTUAL CONSTRUCTION. CONCEPTS, FLOOR PLANS, ELEVATIONS AND ELEVATION HEADINGS ARE ARTIST CONCEPTIONS. FLOOR PLANS ARE THE COPYRIGHTED PROPERTY OF H&H HOMES, INC. ALL RIGHTS RESERVED. PROHIBITED. SEE H&H HOMES SALES CONSULTANT FOR CURRENT DETAILS. COPYRIGHT © 2018 H&H HOMES

H&H HOMES, INC.  
SOUTHPORT

DATE: FEBRUARY 12, 2018  
REV: OCTOBER 15, 2020  
SCALE: 1/4"=1'-0"  
DRAWN BY:  
ENGINEERED BY: WLF  
REVIEWED BY: CRG  
FIRST FLOOR  
ELECTRICAL  
PLAN OPTIONS  
E-1.1

JRH

OMAS

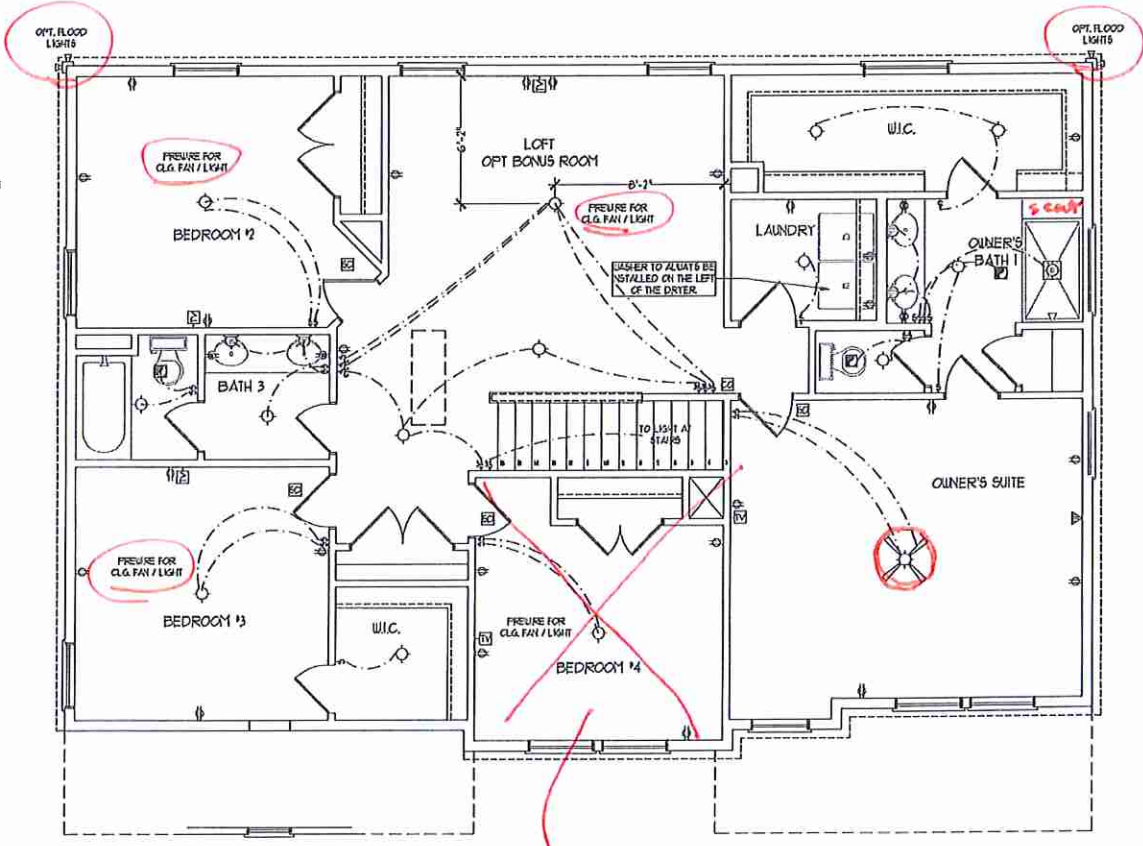
**ELECTRICAL LAYOUT NOTES:**

- 1) LOOK AND USE FOR ALL CEILING FANS PER PLAN
- 2) VANITY LIGHTS TO BE SET # 50" AFF. (11TP)
- 3) ADDITIONAL EXTERIOR OUTLETS REQUIRED BY CODE TO BE LOCATED BY ELECTRICAL
- 4) PLACE SWITCHES 6" FROM ROUGH OPENINGS.

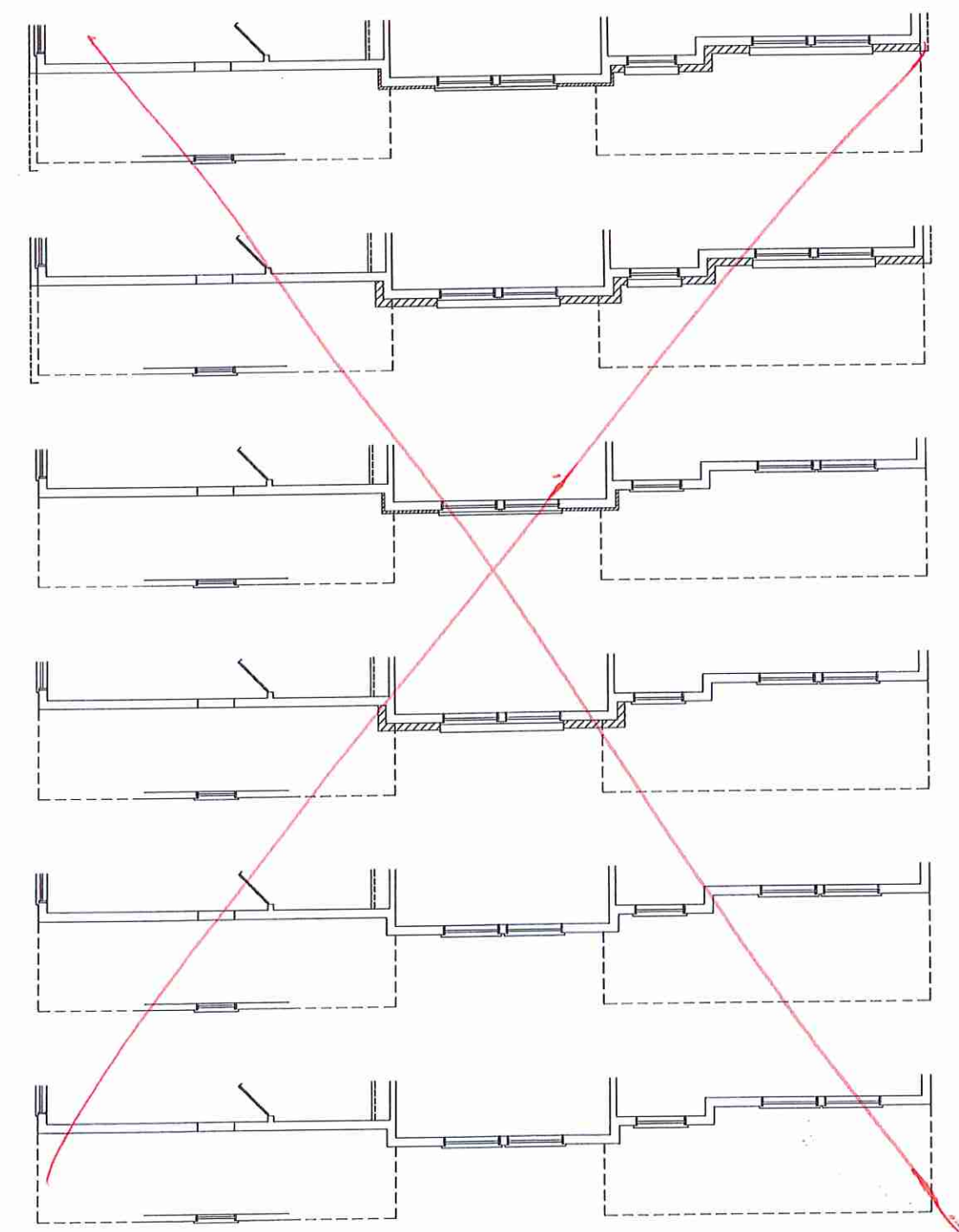
**ELECTRICAL LEGEND**

- 10 V OUTLET
- 10 V GFI OUTLET
- 10 V SWITCHED OUTLET
- 10 V BASEBOARD OUTLET
- 4-FLEX
- COUNTER OR FLOOR MOUNTED
- COUNTER OR FLOOR MOUNTED 10V GFI
- LEATHER PROOF
- 110 V OUTLET
- 10 V DEDICATED CIRCUIT
- 110 V DEDICATED CIRCUIT
- SPECIAL PURPOSE (110 V, ETC.)
- BALL MOUNT LIGHT
- CEILING MOUNT LIGHT
- PENDANT LIGHT
- RECESSED CAN LIGHT
- 100 CAN LIGHT
- EYEBALL LIGHT
- FLUORESCENT LIGHT
- UNDERCABINET LIGHT
- FLOOD LIGHT
- SWITCH
- 3-WAY SWITCH
- 4-WAY SWITCH
- DIPPER SWITCH
- TELEPHONE
- TV CONNECTION
- CONDUIT FOR COMPONENT WIRING
- BREAKER
- DOORBELL CHIME
- THERMOSTAT
- 10 V SMOKE DETECTOR
- CARBON MONOXIDE DETECTOR
- EXHAUST FAN
- LOW VOLTAGE PANEL

- CEILING FAN
- CEILING FAN W/ LIGHT

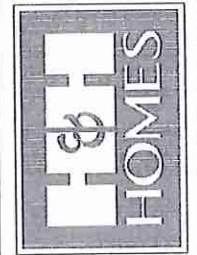


*see sitting room*



JRH

**J.S. THOMPSON ENGINEERING, INC.**  
 100 WARE AVE., SUITE 104  
 RALEIGH, NC 27605  
 PHONE: (919) 780-1910  
 FAX: (919) 780-0921  
 N.C. LICENSE NO. 04113

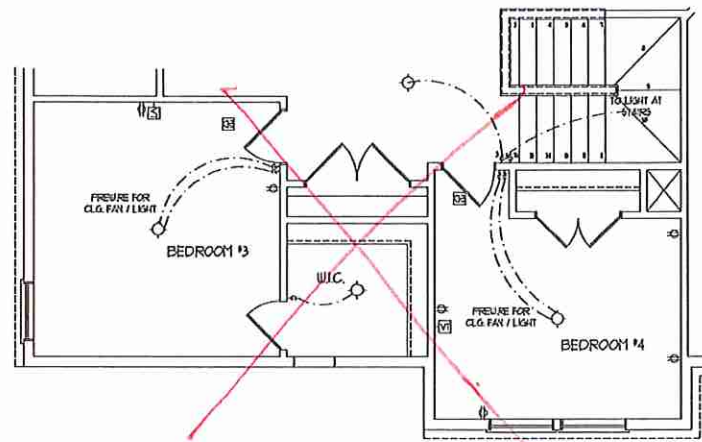


PRICES, PROMOTIONS, RESERVATIONS, FEATURES, MATERIALS AND CONSTRUCTION ARE SUBJECT TO CHANGE WITHOUT NOTICE. SQUARE FOOTAGE AND DIMENSIONS ARE ESTIMATED AND MAY VARY IN ACTUAL CONSTRUCTION. ALL DIMENSIONS ARE TO FACE UNLESS OTHERWISE NOTED. ALL DIMENSIONS AND ELEVATION DIMENSIONS ARE AS SHOWN ON THE DRAWINGS. FLOOR PLANS AND ELEVATION DIMENSIONS ARE THE PROPERTY OF H&H HOMES, INC. AND ARE NOT TO BE REPRODUCED OR TRANSMITTED IN ANY FORM OR BY ANY MEANS, ELECTRONIC OR MECHANICAL, INCLUDING PHOTOCOPYING, RECORDING, OR BY ANY INFORMATION STORAGE AND RETRIEVAL SYSTEM. WITHOUT THE WRITTEN PERMISSION OF H&H HOMES, INC. ALL RIGHTS ARE RESERVED. © 2018 H&H HOMES

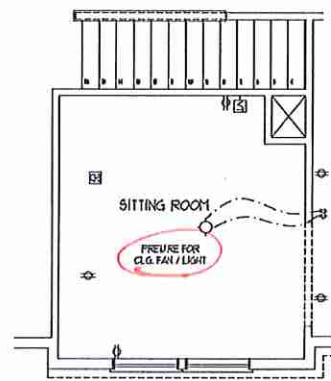
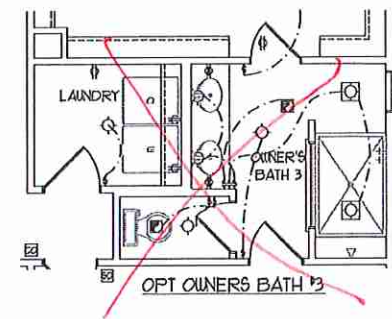
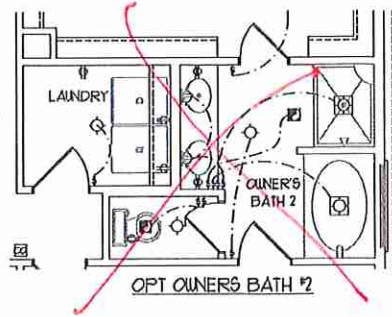
H&H HOMES, INC.  
 SOUTHPORT

DATE: FEBRUARY 12, 2018  
 REV.: OCTOBER 15, 2020  
 SCALE: 1/4"=1'-0"  
 DRAWN BY:  
 ENGINEERED BY: WLF  
 REVIEWED BY: CBG  
 SECOND FLOOR ELECTRICAL PLAN  
 E-2

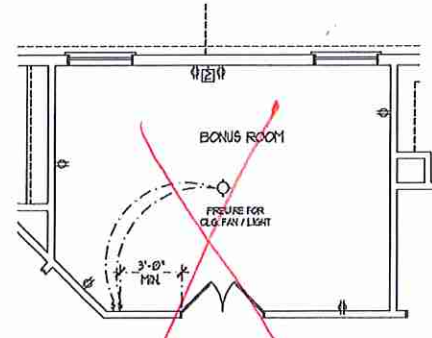
*only*



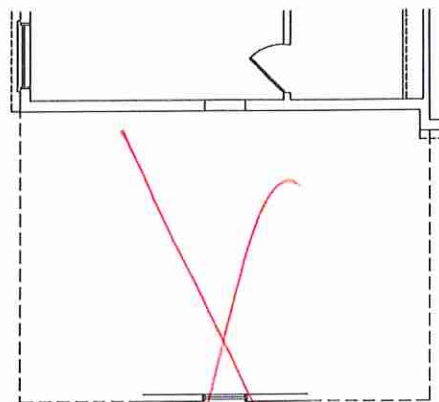
BEDROOM #4 OPTION  
(WITH OPTIONAL BASEMENT)



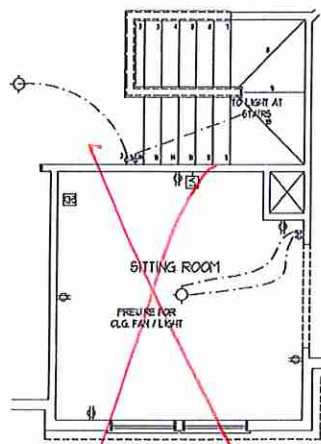
OPT SITTING ROOM W/ BASE HOUSE  
STAIR CONFIGURATION  
I.L.O. BEDROOM #4



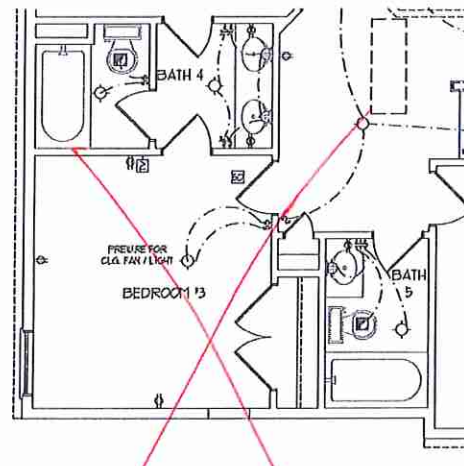
BONUS ROOM I.L.O. LOFT



OPT 3rd CAR SIDELOAD GARAGE

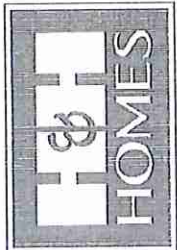


OPT SITTING ROOM W/ OPT  
BASEMENT STAIR CONFIGURATION  
I.L.O. BEDROOM #4



BEDROOM 3 W/ BATH 4 & 5 OPTION I.L.O. BATH #3

**J.S. THOMPSON**  
ENGINEERING, INC.  
1000 W. WILSON AVE., SUITE 104  
FAREHOLM, NC 27645  
PHONE: (919) 720-9510  
FAX: (919) 720-9511  
N.C. LICENSE NO.: C41733



PRICES, PROMOTIONS, REFINISHES, FEATURES,  
FINISHES, AND MATERIALS ARE SUBJECT TO CHANGE  
WITHOUT NOTICE. SQUARE FOOTAGE AND DIMENSIONS  
ARE ESTIMATED AND MAY VARY IN ACTUAL  
CONSTRUCTION. ALL DIMENSIONS ARE TO FACE UNLESS  
OTHERWISE NOTED BY THE SITE PLAN AND P.O.P. PLAN.  
FLOOR PLANS AND ELEVATION RENDERINGS ARE ARTIST  
CONCEPTIONS. FLOOR PLANS ARE THE COPYRIGHTED  
PROPERTY OF H&H HOMES, INC. AND ARE NOT TO BE  
REPRODUCED, COPIED, OR TRANSMITTED IN ANY MANNER  
WHICH IS STRICTLY PROHIBITED. SEE NEW HOME SALES CONSULTANT FOR  
CURRENT DETAILS. COPYRIGHT © 2018 H&H HOMES

H&H HOMES, INC.  
SOUTHPORT

DATE: FEBRUARY 12, 2018  
REV.: OCTOBER 15, 2020  
SCALE: 1/4"=1'-0"  
DRAWN BY:  
ENGINEERED BY: WLF  
REVIEWED BY: CBG

SECOND FLOOR  
ELECTRICAL  
PLAN OPTIONS

E-2.1

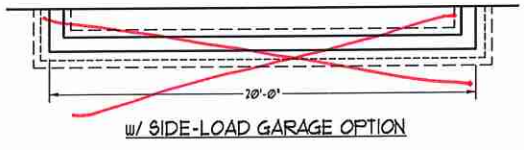
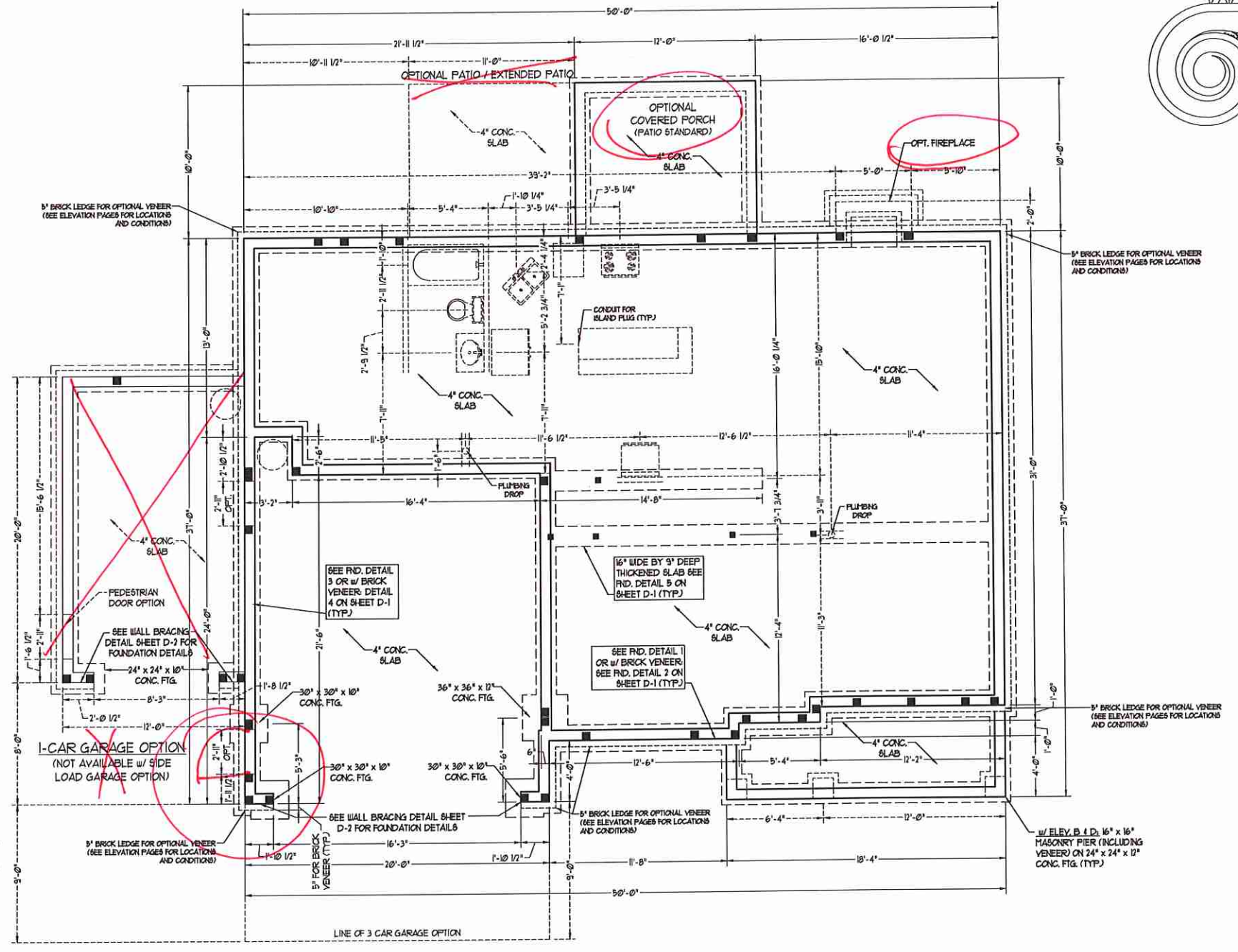
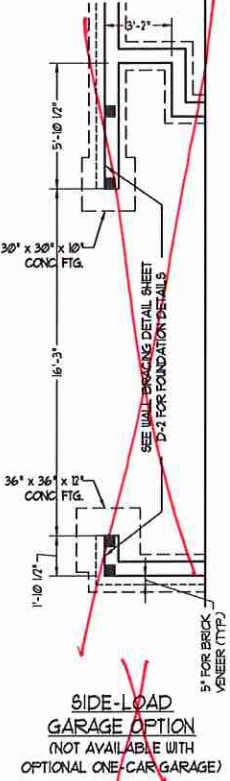
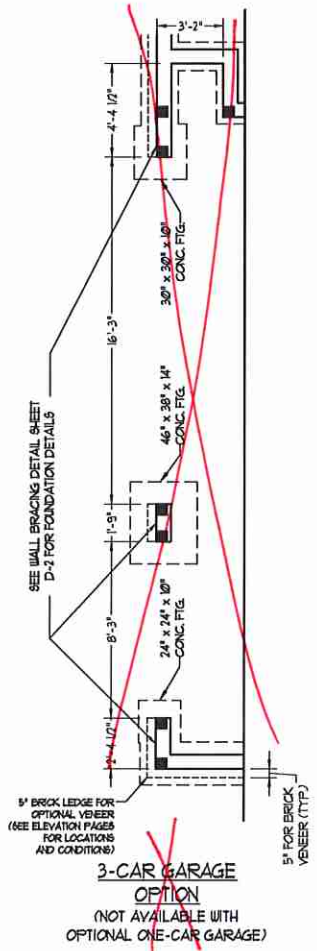
JRU

**60 MPH ULTIMATE DESIGN WIND SPEED NOTES FOR LESS THAN 30' MEAN ROOF HEIGHT:**

- ENGINEER'S SEAL APPLIED ONLY TO STRUCTURAL COMPONENTS. ENGINEER'S SEAL DOES NOT CERTIFY DIMENSIONAL ACCURACY OR ARCHITECTURAL LAYOUT INCLUDING ROOF SYSTEM.
- STRUCTURAL DESIGN PER NORTH CAROLINA RESIDENTIAL CODE, 2018 EDITION WITH SPECIAL CONSIDERATION TO CHAPTER 45 ("HIGH WIND ZONES" FOR 60 MPH WIND).
- BUILDER IS TO PROVIDE FRAMING CONNECTIONS AS REQUIRED BY CHAPTER 45 ("HIGH WIND ZONES" FOR 60 MPH WIND) OF THE NORTH CAROLINA RESIDENTIAL CODE, 2018 EDITION.
- FOUNDATION ANCHORAGE TO COMPLY WITH SECTION 4504 OF THE NORTH CAROLINA RESIDENTIAL CODE, 2018 EDITION.
- MEAN ROOF HEIGHT IS LESS THAN 30 FEET.
- WALL CLADDING DESIGNED FOR 4.3 PSF AND -30 PSF (+/- INDICATE POSITIVE / NEGATIVE PRESSURE (TYP)).
- ROOF CLADDING DESIGNED FOR 40.2 PSF AND -30 PSF FOR ROOF PITCHES 1/2 TO 2/3 AND 44 PSF AND -51 PSF FOR ROOF PITCHES 23/12 TO 1/2.
- 1/2" O.D. SHEATHING IS REQUIRED ON ALL EXTERIOR WALLS.
- WALLS TO BE BRACED IN ACCORDANCE WITH SECTION 602.3 OF THE NORTH CAROLINA RESIDENTIAL CODE, 2018 EDITION AND AS NOTED ON PLANS.
- ENERGY EFFICIENCY COMPLIANCE AND INSULATION VALUES OF THE BUILDING TO BE IN ACCORDANCE WITH CHAPTER 8 OF THE NRC, 2018 EDITION.

**100 MPH ULTIMATE DESIGN WIND SPEED NOTES FOR LESS THAN 30' MEAN ROOF HEIGHT:**

- ENGINEER'S SEAL APPLIED ONLY TO STRUCTURAL COMPONENTS. ENGINEER'S SEAL DOES NOT CERTIFY DIMENSIONAL ACCURACY OR ARCHITECTURAL LAYOUT INCLUDING ROOF SYSTEM.
- STRUCTURAL DESIGN PER NORTH CAROLINA RESIDENTIAL CODE, 2018 EDITION.
- INSTALL 1/2" ANCHOR BOLTS 6'-0" O.C. AND WITHIN 1'-0" FROM END OF EACH CORNER. ANCHOR BOLTS MUST EXTEND A MINIMUM OF 1" INTO MASONRY OR CONCRETE. LOCATE BOLT WITHIN MIDDLE THIRD OF PLATE WIDTH.
- MEAN ROOF HEIGHT IS LESS THAN 30 FEET.
- EXTERIOR WALLS DESIGNED FOR 60 MPH WIND.
- WALL CLADDING DESIGNED FOR 4.3 PSF AND -30 PSF (+/- INDICATE POSITIVE / NEGATIVE PRESSURE (TYP)).
- ROOF CLADDING DESIGNED FOR 40.2 PSF AND -30 PSF FOR ROOF PITCHES 1/2 TO 2/3 AND 44 PSF AND -51 PSF FOR ROOF PITCHES 23/12 TO 1/2.
- INSTALL 1/2" O.D. SHEATHING ON ALL EXTERIOR WALLS OF ALL STORES IN ACCORDANCE WITH SECTION 602.3 OF THE NRC, 2018 EDITION. SEE THE WALL BRACING NOTES AND DETAILS SHEET FOR MORE INFORMATION.
- ENERGY EFFICIENCY COMPLIANCE AND INSULATION VALUES OF THE BUILDING TO BE IN ACCORDANCE WITH CHAPTER 8 OF THE NRC, 2018 EDITION.
- REFER TO NOTES AND DETAIL SHEETS FOR ADDITIONAL STRUCTURAL INFORMATION.



**J.S. THOMPSON ENGINEERING, INC.**  
 606 WADE AVE., SUITE 104, RALEIGH, NC 27605  
 PHONE: (919) 789-9919 FAX: (919) 789-9921  
 N.C. LICENSE NO.: C-1733

**SOUTHPORT H&H HOMES**



DATE: OCTOBER 23, 2020  
 SCALE: 1/4" = 1'-0"  
 DRAWN BY: H&H HOMES  
 ENGINEERED BY: WTB

SHEET 3 OF 9  
**S-1c**  
 STEM WALL FOUNDATION PLAN

**BRACED WALL DESIGN NOTES:**

- BRACED WALL DESIGN PER SECTION R602.10 OF THE NCRC 2018 EDITION.
- CS-WSF REFERS TO "CONTINUOUS SHEATHING - WOOD STRUCTURAL PANELS" CONTRACTOR IS TO INSTALL 1/2" OSB ON ALL EXTERIOR WALLS ATTACHED w/ 8d NAILS SPACED 6" O.C. ALONG PANEL EDGES AND 12" O.C. IN THE FIELD.
- GB REFERS TO "GYPSUM BOARD" CONTRACTOR IS TO INSTALL 1/2" (MIN) GYPSUM WALL BOARD WHERE NOTED ON THE PLANS. FASTEN GB WITH 1 1/4" SCREWS OR 1 5/8" NAILS SPACED 12" O.C. ALONG PANEL EDGES AND IN THE FIELD INCLUDING TOP AND BOTTOM PLATES.
- BRACED WALL DESIGN APPLIED IN WIND ZONES UP TO 130 MPH. FOR HIGH WIND ZONES, BRACE WALLS ARE TO BE CONSTRUCTED IN ACCORDANCE WITH CHAPTER 45 OF THE NCRC 2018 EDITION. SEE NOTES AND DETAIL SHEETS FOR ADDITIONAL BRACED WALL INFORMATION.

**NOTE:**

- PER SECTION R602.10.4.6 OF THE 2018 NCRC, THE AMOUNT OF BRACING REQUIRED ON THE WALK OUT BASEMENT WALLS EXCEEDS THE AMOUNT OF BRACING ON THE WALL ABOVE MULTIPLIED BY A FACTOR OF 1.5.
- WEATH ALL EXTERIOR WALLS WITH 1/2" OSB SHEATHING ATTACHED WITH 8d NAILS AT 6" O.C. ALONG PANEL EDGES AND 12" O.C. IN THE FIELD.

**STRUCTURAL NOTES:**

- ALL FRAMING LUMBER TO BE #2 GFF (UNO).
- ALL LOAD BEARING HEADERS TO BE (3) 2 x 10 (UNO).
- SQUARES DENOTE POINT LOADS WHICH REQUIRE SOLID BLOCKING TO GIRDER OR FOUNDATION. ALL SQUARES TO BE (2) STUDS (UNO).
- INSTALL AN EXTRA JOIST UNDER WALLS PARALLEL TO FLOOR JOISTS WHERE NOTED ON THE PLANS.
- STEP Poured FOUNDATION WALL DOWN TO 2 x 6 # 16" O.C. STUD WALL AS GRADE PERMITS.
- FOR HIGH WIND ZONES, ALL EXTERIOR WALLS TO BE SHEATHED WITH 1/2" OSB SHEATHING WITH JOINTS BLOCKED AND SECURED WITH 8d NAILS AT 3" O.C. ALONG EDGES AND 6" O.C. IN THE FIELD.
- FOR HIGH WIND ZONES, SECURE ALL EXTERIOR WALL SHEATHING PANELS TO DOUBLE TOP PLATES, BANDS, JOISTS, AND GIRDERS WITH (2) ROWS OF 8d NAILS STAGGERED AT 3" O.C. PANELS SHALL EXTEND 12" BEYOND CONSTRUCTION JOINTS AND SHALL OVERLAP GIRDERS AND DOUBLE SILL PLATES THEIR FULL DEPTH.
- ALL 4 x 4 POSTS SHALL BE ANCHORED TO SLABS w/ SIMPSON ABU44 POST BASES (OR EQUAL) AND 6 x 6 POSTS w/ ABU66 POST BASES (OR EQUAL) (UNO). ALL 4 x 4 AND 6 x 6 POSTS TO BE INSTALLED WITH 1000 LB CAPACITY UPLIFT CONNECTORS AT TOP (UNO).
- FOR FIBERGLASS, ALUMINUM, OR COLUMN ENDS, BY OTHERS, SECURE TO SLAB w/ (2) METAL ANGLES USING 3" CONC. SCREWS. FASTEN ANGLES TO COLLUMNS w/ 1/4" THROUGH BOLTS w/ NUTS AND WASHERS. LOCATE ANGLES ON OPPOSITE SIDES OF COLUMN. THROUGH BOLTS MUST BE INSTALLED PRIOR TO SETTING COLUMN.
- REFER TO NOTES AND DETAIL SHEETS FOR ADDITIONAL STRUCTURAL INFORMATION.

TABLE R602.15  
MINIMUM NUMBER OF FULL HEIGHT STUDS  
AT EACH END OF HEADERS IN EXTERIOR WALLS

HEADER SPAN (FEET)	MAXIMUM STUD SPACING (INCHES) (PER TABLE R602.15)	
	16	24
UP TO 3'	1	1
4'	2	1
8'	3	2
12'	5	3
16'	6	4

**HEADER SPAN TABLE**

HEADER SIZE	MAX SPAN
(3) 2 x 8	4'-0"
(3) 2 x 10	4'-9"
(3) 2 x 12	5'-6"

**NOTE:**

- TABLE ONLY APPLIES TO HEADERS LOCATED WITHIN DOOR LOCATIONS INDICATED ON PLAN.
- (3) JACKS ARE REQUIRED AT EACH END OF HEADERS.

**LINTEL SCHEDULE FOR BRICK/NATURAL STONE SUPPORT**

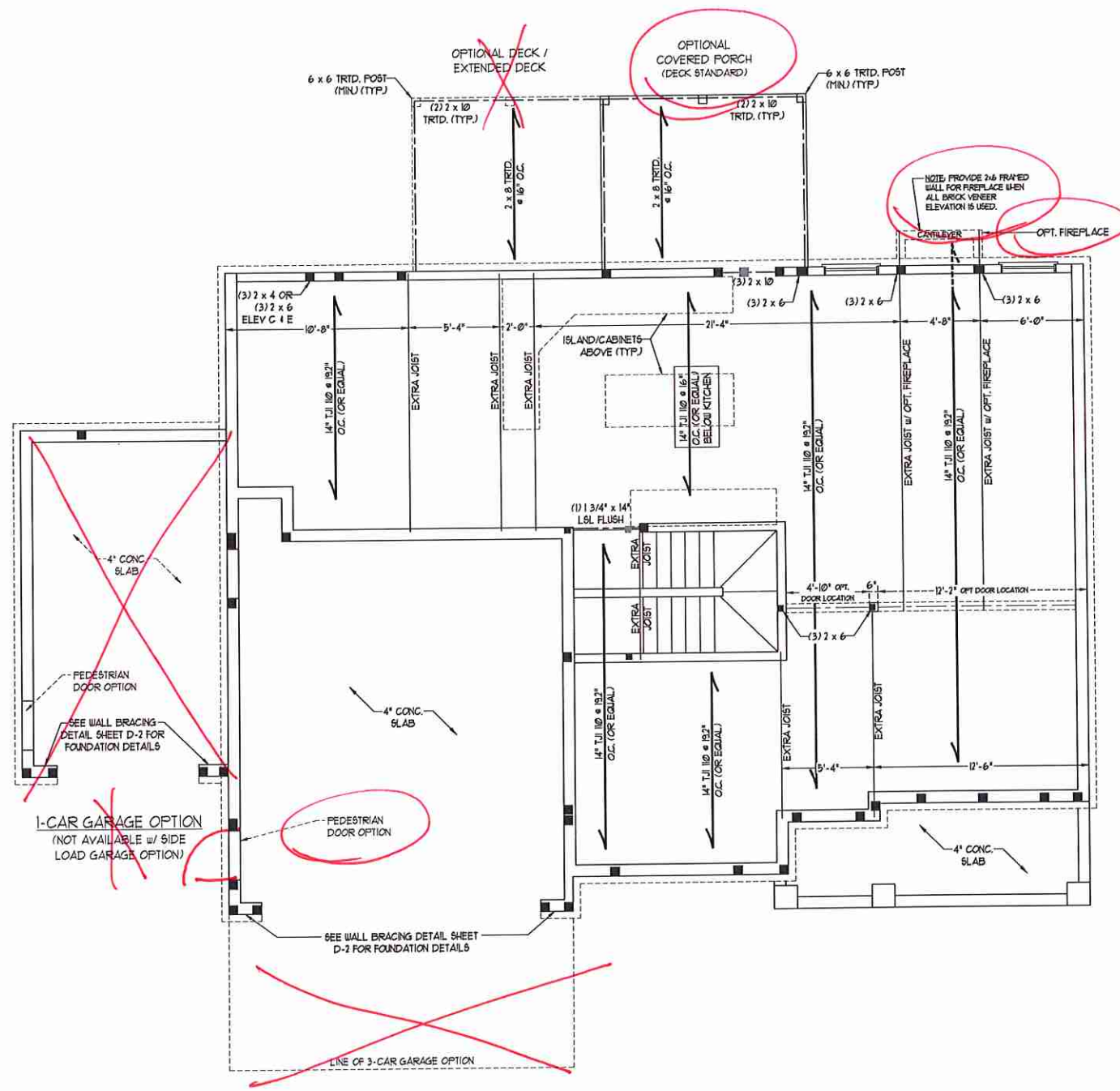
LENGTH (FT)	SIZE OF LINTEL
UP TO 4 FT.	L 3 1/2 x 3 1/2 x 1/4
4-8	L 5 x 3 1/2 x 5/16 LLV
8 AND GREATER	L 6 x 4 x 5/16 LLV

**BRICK SUPPORT NOTES:**

- LINTEL SCHEDULE APPLIES TO ALL OPENINGS IN BRICK VENEER (UNO). SEE ARCH DUGS. FOR SIZE AND LOCATION OF OPENINGS.
- (LLV) = LONG LEG VERTICAL
- LENGTH + CLEAR OPENING
- EMBED ALL ANGLE IRONS MIN. 4" EACH SIDE INTO VENEER TO PROVIDE BEARING.
- FOR ALL HEADERS 8'-0" AND GREATER IN LENGTH, ATTACH STEEL ANGLE TO HEADER w/ 1/2" LAG SCREWS @ 12" O.C. STAGGERED.
- FOR ALL BRICK SUPPORT # ROOF LINES, FASTEN (2) 2 x 10 BLOCKING BETWEEN STUDS w/ (4) 10d NAILS PER FLY. FASTEN A 6" x 4" x 5/16" STEEL ANGLE TO (2) 2 x 10 BLOCKING w/ (2) 1/2" LAG SCREWS @ 12" O.C. STAGGERED. SEE SECTION R103.8.2) OF THE 2018 NCRC FOR ADDITIONAL BRICK SUPPORT INFORMATION.
- PRECAST REINFORCED CONCRETE LINTELS ENGINEERED BY OTHERS MAY BE USED IN LIEU OF STEEL LINTELS.

**NOTE:**

- BCI 4500s-10 JOISTS MAY BE USED IN LIEU OF TJI 110 JOISTS AT THE DEPTH AND SPACING NOTED ON THE PLAN.



**J.S. THOMPSON ENGINEERING, INC.**  
 656 WADE AVE., SUITE 104 RALEIGH, NC 27665  
 PHONE: (919) 789-9919 FAX: (919) 789-9921  
 N.C. LICENSE NO.: C-1733

**SOUTHPORT H&H HOMES**



DATE: OCTOBER 23, 2020  
 SCALE: 1/4" = 1'-0"  
 DRAWN BY: H&H HOMES  
 ENGINEERED BY: WFB

SHEET 5 OF 9  
 S-2  
 FIRST FLOOR FRAMING PLAN

10/27/2020

**BRACED WALL DESIGN**

RECTANGLE A		RECTANGLE B	
SIDE 1A (FRONT LOAD)	SIDE 1B	SIDE 2A	SIDE 2B
METHOD: CS-U5P/FF	METHOD: FF/C5-U5P	METHOD: CS-U5P	METHOD: CS-U5P
TOTAL REQUIRED LENGTH: 15'	TOTAL REQUIRED LENGTH: 285'	TOTAL REQUIRED LENGTH: 5'	TOTAL REQUIRED LENGTH: 285'
TOTAL PROVIDED LENGTH: 17.35'	TOTAL PROVIDED LENGTH: 6"	TOTAL PROVIDED LENGTH: 235'	TOTAL PROVIDED LENGTH: 12'
SIDE 2A	SIDE 2B	SIDE 3A	SIDE 3B / SIDE 4A (CUMULATIVE)
METHOD: CS-U5P	METHOD: CS-U5P	METHOD: CS-U5P	METHOD: CS-U5P/GB
TOTAL REQUIRED LENGTH: 5'	TOTAL REQUIRED LENGTH: 285'	TOTAL REQUIRED LENGTH: 16.2'	TOTAL REQUIRED LENGTH: 18.3'
TOTAL PROVIDED LENGTH: 7.15'	TOTAL PROVIDED LENGTH: 6"	TOTAL PROVIDED LENGTH: 29.83'	TOTAL PROVIDED LENGTH: 23'
SIDE 3A	SIDE 3B / SIDE 4A (CUMULATIVE)	SIDE 4A (3 CAR)	SIDE 4B
METHOD: CS-U5P	METHOD: CS-U5P/GB	METHOD: CS-U5P/FF	METHOD: CS-U5P
TOTAL REQUIRED LENGTH: 16.2'	TOTAL REQUIRED LENGTH: 18.3'	TOTAL REQUIRED LENGTH: 16.2'	TOTAL REQUIRED LENGTH: 21'
TOTAL PROVIDED LENGTH: 29.83'	TOTAL PROVIDED LENGTH: 23'	TOTAL PROVIDED LENGTH: 24.25'	TOTAL PROVIDED LENGTH: 15.58'

**BRACED WALL DESIGN NOTES:**

- BRACED WALL DESIGN PER SECTION R6-02.10 OF THE NCRC 2018 EDITION.
- CS-U5P REFERS TO 'CONTINUOUS SHEATHING - WOOD STRUCTURAL PANELS' CONTRACTOR IS TO INSTALL 1/4" OSB ON ALL EXTERIOR WALLS ATTACHED TO 8d NAILS SPACED 6" O.C. ALONG PANEL EDGES AND 12" O.C. IN THE FIELD.
- GB REFERS TO 'GYPSUM BOARD' CONTRACTOR IS TO INSTALL 1/2" (MIN) GYPSUM WALL BOARD WHERE NOTED ON THE PLANS. FASTEN GB WITH 1 1/4" SCREWS OR 1 5/8" NAILS SPACED 12" O.C. ALONG PANEL EDGES AND IN THE FIELD INCLUDING TOP AND BOTTOM FLATES.
- BRACED WALL DESIGN APPLIED IN WIND ZONES UP TO 150 MPH. FOR HIGH WIND ZONES, BRACE WALLS ARE TO BE CONSTRUCTED IN ACCORDANCE WITH CHAPTER 45 OF THE NCRC 2018 EDITION. SEE NOTES AND DETAIL SHEETS FOR ADDITIONAL BRACED WALL INFORMATION.

**NOTE: ALL EXTERIOR WALLS AND ATTIC WALLS ARE TO BE 2 x 6 @ 16" O.C. (UNO). 2 x 4 @ 16" O.C. EXTERIOR WALLS MAY BE CONSTRUCTED IN LIEU OF 2 x 6 WALLS (UNO). ALL INTERIOR LOAD BEARING WALLS ARE TO BE 2 x 4 @ 16" O.C. (UNO) AND NON-LOAD BEARING INTERIOR WALLS ARE TO BE 2 x 4 @ 24" O.C. (UNO).**

**LINTEL SCHEDULE FOR BRICK/NATURAL STONE SUPPORT**

LENGTH (FT.)	SIZE OF LINTEL
UP TO 4 FT.	L 3 1/2 x 3 1/2 x 1/4
4-8	L 5 x 3 1/2 x 5/16 LLY
8 AND GREATER	L 6 x 4 x 5/16 LLY

**NOTE:**  
• BCI 4500A-1B JOISTS MAY BE USED IN LIEU OF TJI 10 JOISTS AT THE DEPTH AND SPACING NOTED ON THE PLAN.

**BRICK SUPPORT NOTES:**

- LINTEL SCHEDULE APPLIES TO ALL OPENINGS IN BRICK VENEER (UNO) SEE ARCH DWGS. FOR SIZE AND LOCATION OF OPENINGS.
- (LLV) = LONG LEG VERTICAL
- LENGTH = CLEAR OPENING
- EMBED ALL ANGLE IRONS MIN. 4" EACH SIDE INTO VENEER TO PROVIDE BEARING.
- FOR ALL HEADERS 8"-0" AND GREATER IN LENGTH, ATTACH STEEL ANGLE TO HEADER W/ 1/2" LAG SCREWS @ 12" O.C. STAGGERED.
- FOR ALL BRICK SUPPORT @ ROOF LINES, FASTEN (2) 2 x 10 BLOCKING BETWEEN STUDS w/ (4) Dd NAILS PER PLY. FASTEN A 6" x 4" x 5/16" STEEL ANGLE TO (2) 2 x 10 BLOCKING w/ (2) 1/2" LAG SCREWS @ 12" O.C. STAGGERED. SEE SECTION R103.021 OF THE 2018 NCRC FOR ADDITIONAL BRICK SUPPORT INFORMATION.
- PRECAST REINFORCED CONCRETE LINTELS ENGINEERED BY OTHERS MAY BE USED IN LIEU OF STEEL LINTELS.

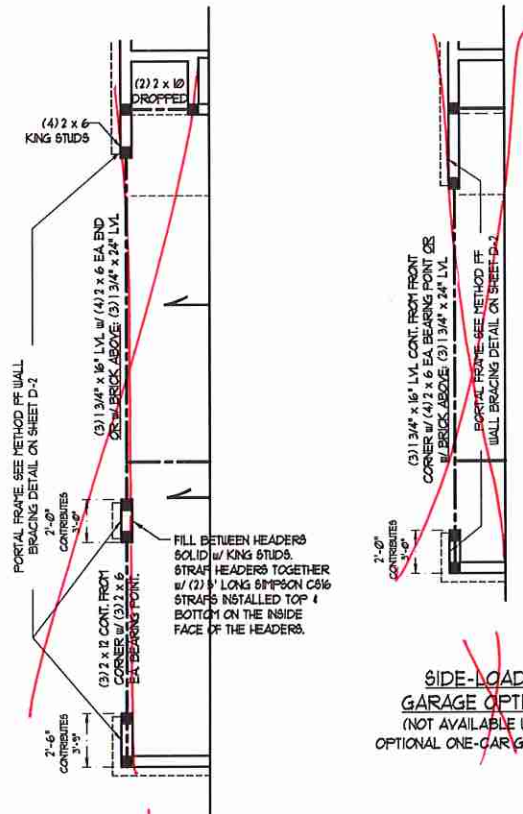
**STRUCTURAL NOTES:**

- ALL FRAMING LUMBER TO BE 6FF 2' (UNO). ALL TREATED LUMBER TO BE 6TP 2' (UNO).
- ALL LOAD BEARING HEADERS TO BE (2) 2 x 6 (UNO).
- WINDOW AND DOOR HEADERS TO BE SUPPORTED W/ (1) JACK STUD AND (1) KING STUD EA. END (UNO). SEE TABLE R6-02.15 FOR ADDITIONAL KING STUD REQUIREMENTS.
- SQUARES DENOTE POINT LOADS WHICH REQUIRE SOLID BLOCKING TO GIRDER OR FOUNDATION. ALL SQUARES TO BE (2) STUDS (UNO).
- FOR HIGH WIND ZONES, ALL EXTERIOR WALLS TO BE SHEATHED WITH 1/4" OSB WITH JOINTS BLOCKED AND SECURED WITH 8d NAILS AT 3" O.C. ALONG EDGES AND 6" O.C. IN THE FIELD.
- FOR HIGH WIND ZONES, SECURE ALL EXTERIOR WALL SHEATHING PANELS TO DOUBLE TOP FLATES, BANDS, JOISTS, AND GIRDERS WITH (2) ROWS OF 8d NAILS STAGGERED AT 3" O.C. PANELS SHALL EXTEND 12" BEYOND CONSTRUCTION JOINTS AND SHALL OVERLAP GIRDERS AND DOUBLE BILL PLATES THEIR FULL DEPTH.
- ALL 4 x 4 POSTS SHALL BE ANCHORED TO SLABS W/ SIMPSON ABU44 POST BASES (OR EQUAL) AND 6 x 6 POSTS W/ ABU66 POST BASES (OR EQUAL) (UNO). ALL 4 x 4 AND 6 x 6 POSTS TO BE INSTALLED WITH 100 LB CAPACITY UPLIFT CONNECTORS AT TOP (UNO).
- FOR FIBERGLASS, ALUMINUM, OR COLUMN ENG. BY OTHERS, SECURE TO SLAB W/ (2) METAL ANGLES USING 2" CONC. SCREWS. FASTEN ANGLES TO COLUMN W/ 1/4" THROUGH BOLTS W/ NUTS AND WASHERS. LOCATE ANGLES ON OPPOSITE SIDES OF COLUMN. THROUGH BOLTS MUST BE INSTALLED PRIOR TO SETTING COLUMN. REFER TO NOTES AND DETAIL SHEETS FOR ADDITIONAL STRUCTURAL INFORMATION.

\*T6P\* INDICATES TRIPLE STUD POCKET BETWEEN WINDOW UNITS.

**TABLE R6-02.15**  
MINIMUM NUMBER OF FULL HEIGHT STUDS AT EACH END OF HEADERS IN EXTERIOR WALLS

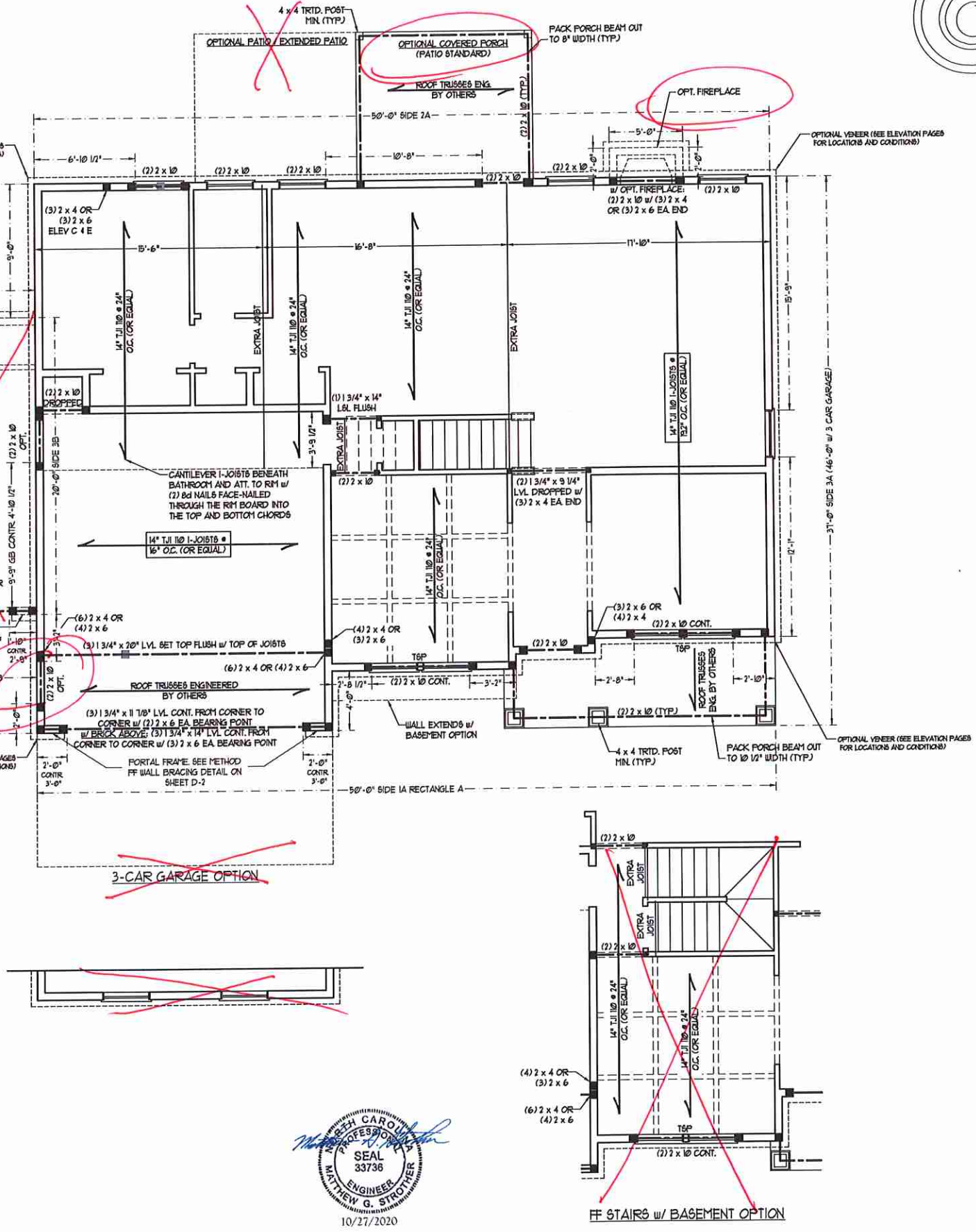
HEADER SPAN (FEET)	16	24
UP TO 3'	1	1
4'	2	1
8'	3	2
12'	5	3
16'	6	4



**3-CAR GARAGE OPTION**  
(NOT AVAILABLE WITH OPTIONAL ONE-CAR GARAGE)

**SIDE-LOAD GARAGE OPTION**  
(NOT AVAILABLE WITH OPTIONAL ONE-CAR GARAGE)

**1-CAR GARAGE OPTION**  
(NOT AVAILABLE W/ SIDE LOAD GARAGE OPTION)



**SEAL**  
33736  
ENGINEER  
MATTHEW G. STROTHER

**J.S. THOMPSON ENGINEERING, INC.**  
686 WADE AVE. SUITE 104 RALEIGH, NC 27605  
PHONE: (919) 789-9919 FAX: (919) 789-9921  
N.C. LICENSE NO.: C1735

**SOUTHPORT H&H HOMES**

DATE: OCTOBER 23, 2020  
SCALE: 1/4" = 1'-0"  
DRAWN BY: H&H HOMES  
ENGINEERED BY: WFB

SHEET 6 OF 9  
S-3  
SECOND FLOOR FRAMING PLAN

**BRACED WALL DESIGN NOTES:**

- BRACED WALL DESIGN PER SECTION R602.10 OF THE NRC 2018 EDITION.
- C5-USA REFERS TO 'CONTINUOUS SHEATHING - WOOD STRUCTURAL PANELS' CONTRACTOR IS TO INSTALL 1/8" OSB ON ALL EXTERIOR WALLS ATTACHED w/ 8d NAILS SPACED 6" O.C. ALONG PANEL EDGES AND 12" O.C. IN THE FIELD.
- GB REFERS TO 'GYPSUM BOARD' CONTRACTOR IS TO INSTALL 1/2" (5/8") GYPSUM WALL BOARD WHERE NOTED ON THE PLANS. FASTEN GB WITH 1 1/4" SCREWS OR 1 5/8" NAILS SPACED 12" O.C. ALONG PANEL EDGES AND IN THE FIELD INCLUDING TOP AND BOTTOM PLATES.
- BRACED WALL DESIGN APPLIED IN WIND ZONES UP TO 130 MPH. FOR HIGH WIND ZONES, BRACE WALLS ARE TO BE CONSTRUCTED IN ACCORDANCE WITH CHAPTER 45 OF THE NRC 2018 EDITION. SEE NOTES AND DETAIL SHEETS FOR ADDITIONAL BRACED WALL INFORMATION.

**NOTE: ALL EXTERIOR WALLS AND ATTIC WALLS ARE TO BE 2 x 6 @ 16" O.C. (UNO). 2 x 4 @ 16" O.C. EXTERIOR WALLS MAY BE CONSTRUCTED IN LIEU OF 2 x 6 WALLS (UNO). ALL INTERIOR LOAD BEARING WALLS ARE TO BE 2 x 4 @ 16" O.C. (UNO) AND NON-LOAD BEARING INTERIOR WALLS ARE TO BE 2 x 4 @ 24" O.C. (UNO).**

**NOTE:**

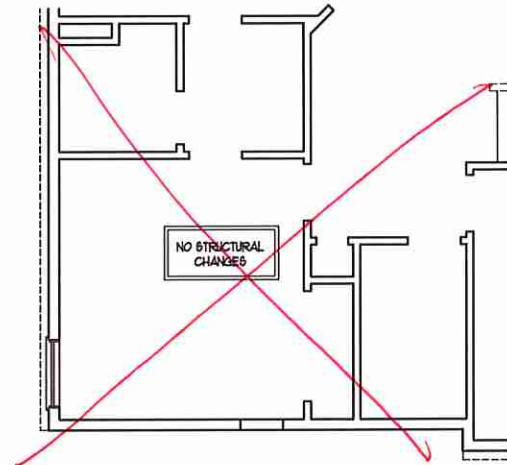
- PER SECTION R602.10.3.3 OF THE 2018 NRC, THE AMOUNT OF BRACING ON THE SECOND FLOOR EXCEEDS THE AMOUNT REQUIRED FOR THE FIRST FLOOR AND NO BRACED WALL ANALYSIS IS REQUIRED.
- SHEATH ALL EXTERIOR WALLS WITH 1/8" OSB SHEATHING ATTACHED WITH 8d NAILS AT 6" O.C. ALONG PANEL EDGES AND 12" O.C. IN THE FIELD.

**LINTEL SCHEDULE FOR BRICK/NATURAL STONE SUPPORT**

LENGTH (FT)	SIZE OF LINTEL
UP TO 4 FT.	L 3 1/2 x 3 1/2 x 1/4
4-8	L 5 x 3 1/2 x 5/16 LLV
8 AND GREATER	L 6 x 4 x 5/16 LLV

**BRICK SUPPORT NOTES:**

- LINTEL SCHEDULE APPLIES TO ALL OPENINGS IN BRICK VENEER (UNO). SEE ARCH DWGS. FOR SIZE AND LOCATION OF OPENINGS.
- (LLV) = LONG LEG VERTICAL
- LENGTH = CLEAR OPENING
- EMBED ALL ANGLE IRONS MIN. 4" EACH SIDE INTO VENEER TO PROVIDE BEARING.
- FOR ALL HEADERS 8'-0" AND GREATER IN LENGTH, ATTACH STEEL ANGLE TO HEADER w/ 1/2" LAG SCREWS @ 12" O.C. STAGGERED.
- FOR ALL BRICK SUPPORT @ ROOF LINES, FASTEN (2) 2 x 10 BLOCKING BETWEEN STUDS w/ (4) 2d NAILS PER PLY. FASTEN A 6" x 4" x 5/16" STEEL ANGLE TO (2) 2 x 10 BLOCKING w/ (2) 1/2" LAG SCREWS @ 12" O.C. STAGGERED. SEE SECTION R109.8.2 OF THE 2018 NRC FOR ADDITIONAL BRICK SUPPORT INFORMATION.
- PRECAST REINFORCED CONCRETE LINTELS ENGINEERED BY OTHERS MAY BE USED IN LIEU OF STEEL LINTELS.



BEDROOM 3 w/ BATH 4 AND 5 OPTION

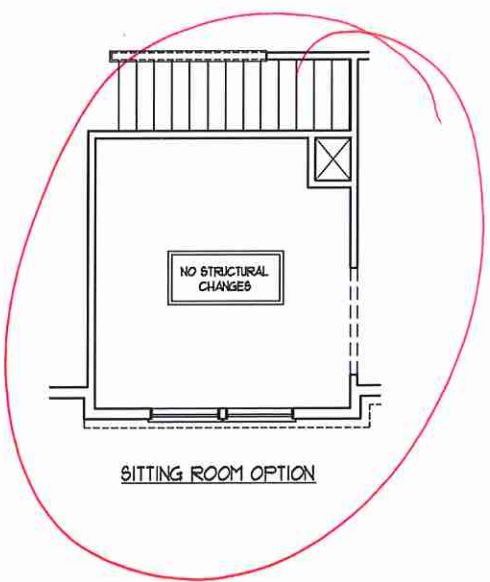
**STRUCTURAL NOTES:**

- ALL FRAMING LUMBER TO BE SPP #1 (UNO). ALL TREATED LUMBER TO BE SPP #2 (UNO).
- ALL LOAD BEARING HEADERS TO BE (2) 2 x 6 (UNO).
- WINDOW AND DOOR HEADERS TO BE SUPPORTED w/ (1) JACK STUD AND (1) KING STUD EA. END (UNO). SEE TABLE R602.15 FOR ADDITIONAL KING STUD REQUIREMENTS.
- SQUARES DENOTE POINT LOADS WHICH REQUIRE SOLID BLOCKING TO GIRDER OR FOUNDATION. ALL SQUARES TO BE (2) STUDS (UNO).
- FOR HIGH WIND ZONES, ALL EXTERIOR WALLS TO BE SHEATHED WITH 1/8" OSB SHEATHING WITH JOINTS BLOCKED AND SECURED WITH 8d NAILS AT 3" O.C. ALONG EDGES AND 6" O.C. IN THE FIELD.
- FOR HIGH WIND ZONES, SECURE ALL EXTERIOR WALL SHEATHING PANELS TO DOUBLE TOP PLATES, BANDS, JOISTS, AND GIRDERS WITH (2) ROWS OF 8d NAILS STAGGERED AT 3" O.C. PANELS SHALL EXTEND 12" BEYOND CONSTRUCTION JOINTS AND SHALL OVERLAP GIRDERS AND DOUBLE GILL FLATES THEIR FULL DEPTH. REFER TO NOTES AND DETAIL SHEETS FOR ADDITIONAL STRUCTURAL INFORMATION.

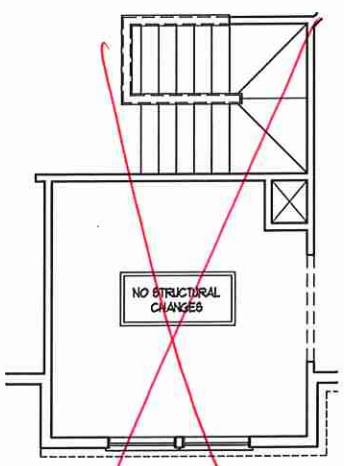
\*16" INDICATES TRIPLE STUD POCKET BETWEEN WINDOW UNITS.

**TABLE R602.15 MINIMUM NUMBER OF FULL HEIGHT STUDS AT EACH END OF HEADERS IN EXTERIOR WALLS**

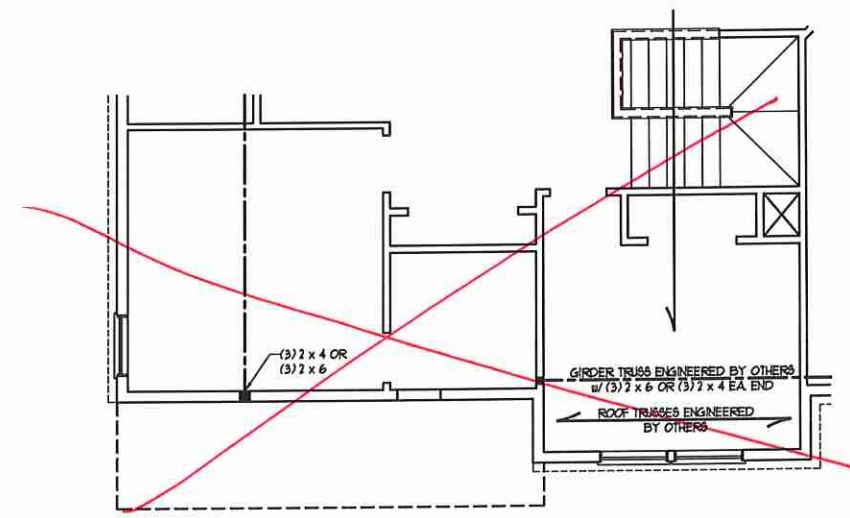
HEADER SPAN (FEET)	MAXIMUM STUD SPACING (INCHES) (PER TABLE R602.15)	
	16	24
UP TO 3'	1	1
4'	2	1
6'	3	2
8'	5	3
16'	6	4



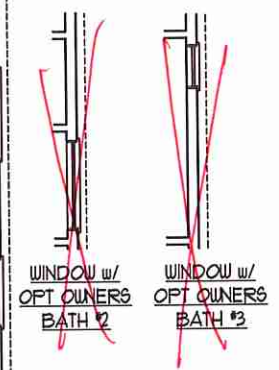
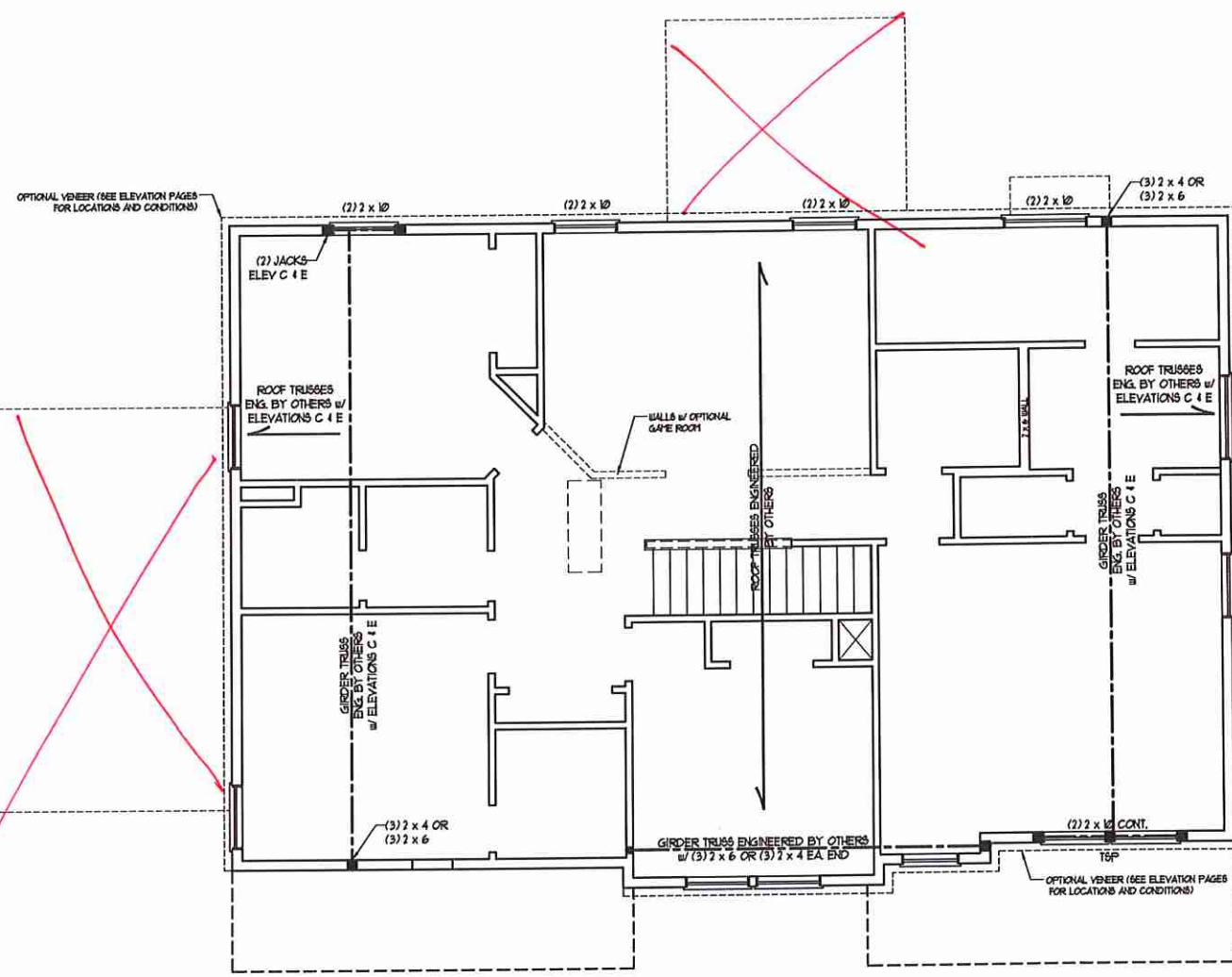
SITTING ROOM OPTION



SITTING ROOM OPTION AND SF STAIRS (WITH BASEMENT OPTION)



BEDROOM #4 OPTION (WITH BASEMENT OPTION)



10/27/2020

**J.S. THOMPSON ENGINEERING, INC.**  
 656 WADE AVE. SUITE 104 RALEIGH, NC 27605  
 PHONE: (919) 789-9919 FAX: (919) 789-9921  
 N.C. LICENSE NO.: C-1733

SOUTHPORT  
 H&H HOMES

DATE: OCTOBER 23, 2020  
 SCALE: 1/4" = 1'-0"  
 DRAWN BY: H&H HOMES  
 ENGINEERED BY: WTB

SHEET 7 OF 9  
**S4**  
 CEILING FRAMING PLAN



**ATTIC VENT CALCULATION:**  
 100 SQ. FT. OF ATTIC DIVIDED BY  
 150 REQUIRES 121 SQ. FT. OF NET  
 FREE VENTILATING AREA (MIN.)

**BRICK SUPPORT NOTE:**

1. FASTEN (2) 2 x 10 BLOCKING BETWEEN WALL STUDS w/ (4) 12d NAILS PER FLY. FASTEN A 6" x 4" x 5/16" STEEL ANGLE TO (2) 2 x 10 BLOCKING w/ (2) 1/2" LAG SCREWS @ 12" O.C. STAGGERED. SEE SECTION R103.8.2.1 OF THE 2018 NCRC FOR ADDITIONAL BRICK SUPPORT INFORMATION.
2. WHERE ROOF SLOPES EXCEED 1:12, INSTALL 3" x 3" x 1/4" STEEL PLATE 6" O.C. AT 24" O.C. PER SECTION R103.8.2.1 OF THE NORTH CAROLINA RESIDENTIAL CODE, 2018 EDITION.

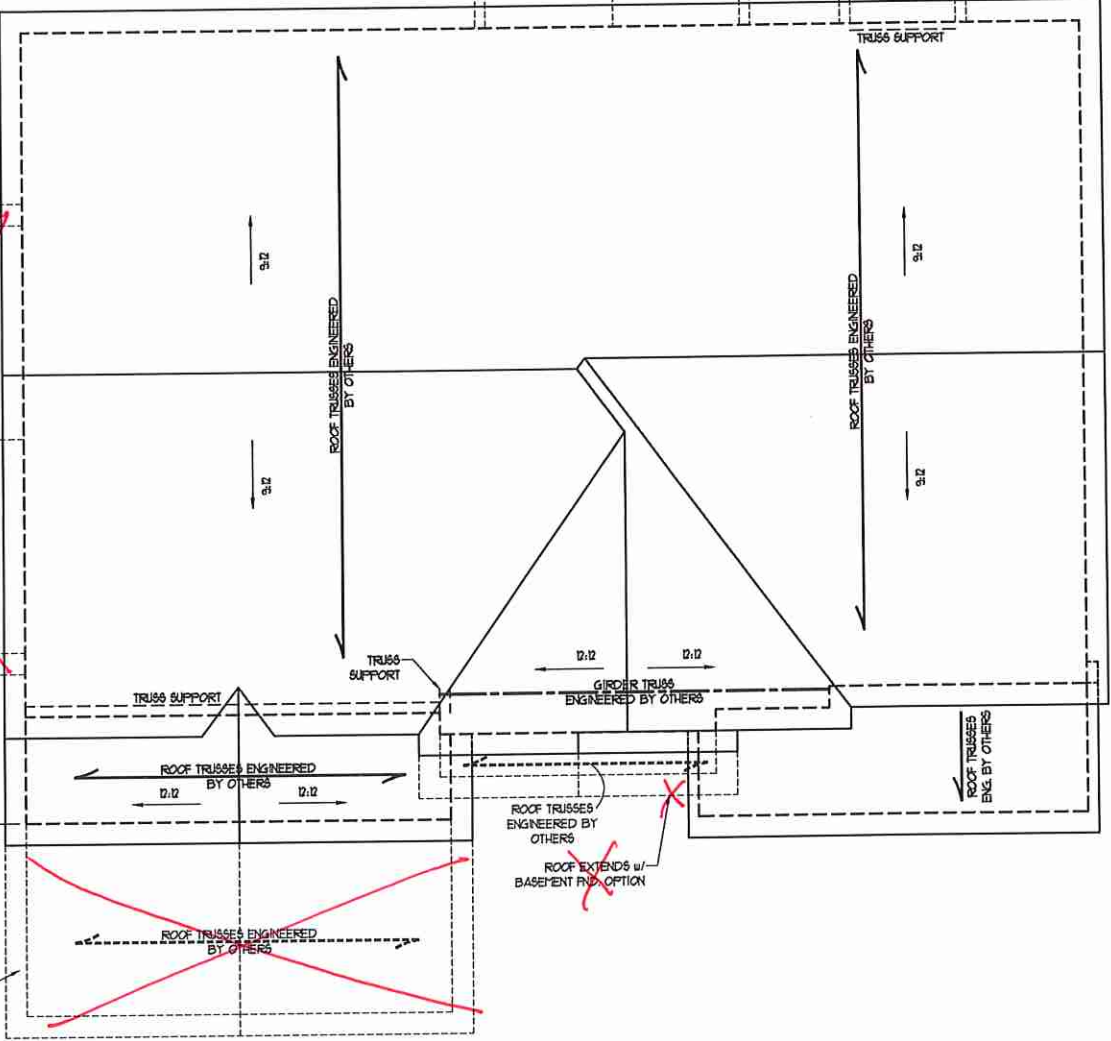
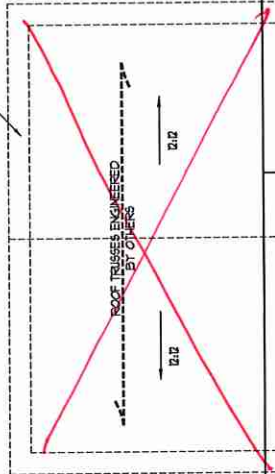
**STRUCTURAL NOTES:**

1. ALL FRAMING LUMBER TO BE #2 SFF (UND).
2. CIRCLES DENOTE (3) 2 x 4 POSTS FOR ROOF SUPPORT.
3. FRAME DORMER WALLS ON TOP OF DOUBLE OR TRIPLE RAFTERS.
4. HIP SPLICES ARE TO BE SPACED A MIN. OF 8'-0". FASTEN MEMBERS WITH THREE ROWS OF 12d NAILS @ 16" O.C. (TYP)
5. STICK FRAME OVER-FRAMED ROOF SECTIONS w/ 2 x 8 RIDGES, 2 x 6 RAFTERS @ 16" O.C. AND FLAT 2 x 10 VALLEYS OR USE VALLEY TRUSSES.
6. FASTEN FLAT VALLEYS TO RAFTERS OR TRUSSES WITH SIMPSON HD3A HURRICANE TIES @ 32" O.C. MAX. PASS HURRICANE TIES THROUGH NOTCH IN ROOF SHEATHING. EACH RAFTER IS TO BE FASTENED TO THE FLAT VALLEY WITH A MIN. OF (6) 12d TOE NAILS.
7. REFER TO SECTION R802.1.1 OF THE 2018 NCRC FOR REQUIRED UPLIFT RESISTANCE AT RAFTERS AND TRUSSES.
8. REFER TO NOTES AND DETAIL SHEETS FOR ADDITIONAL STRUCTURAL INFORMATION.

**OPTIONAL 1-CAR GARAGE**  
**ATTIC VENT CALCULATION:**  
 240 SQ. FT. OF ATTIC DIVIDED BY  
 150 REQUIRES 16 SQ. FT. OF NET  
 FREE VENTILATING AREA (MIN.)

**OPTIONAL COVERED PORCH**  
**ATTIC VENT CALCULATION:**  
 120 SQ. FT. OF ATTIC DIVIDED BY  
 150 REQUIRES 0.8 SQ. FT. OF NET  
 FREE VENTILATING AREA (MIN.)

**OPT. FIREPLACE**  
 2 x 6 RAFTERS @  
 16" O.C.



**3-CAR GARAGE OPTION**  
**ATTIC VENT CALCULATION:**  
 100 SQ. FT. OF ATTIC DIVIDED BY  
 150 REQUIRES 12 SQ. FT. OF NET  
 FREE VENTILATING AREA (MIN.)

ELEVATIONS A, B, & D

**J.S. THOMPSON  
 ENGINEERING, INC.**  
 666 WADE AVE., SUITE 104 RALEIGH, NC 27603  
 PHONE (919) 789-9921 FAX (919) 789-9921  
 N.C. LICENSE NO. C-1733

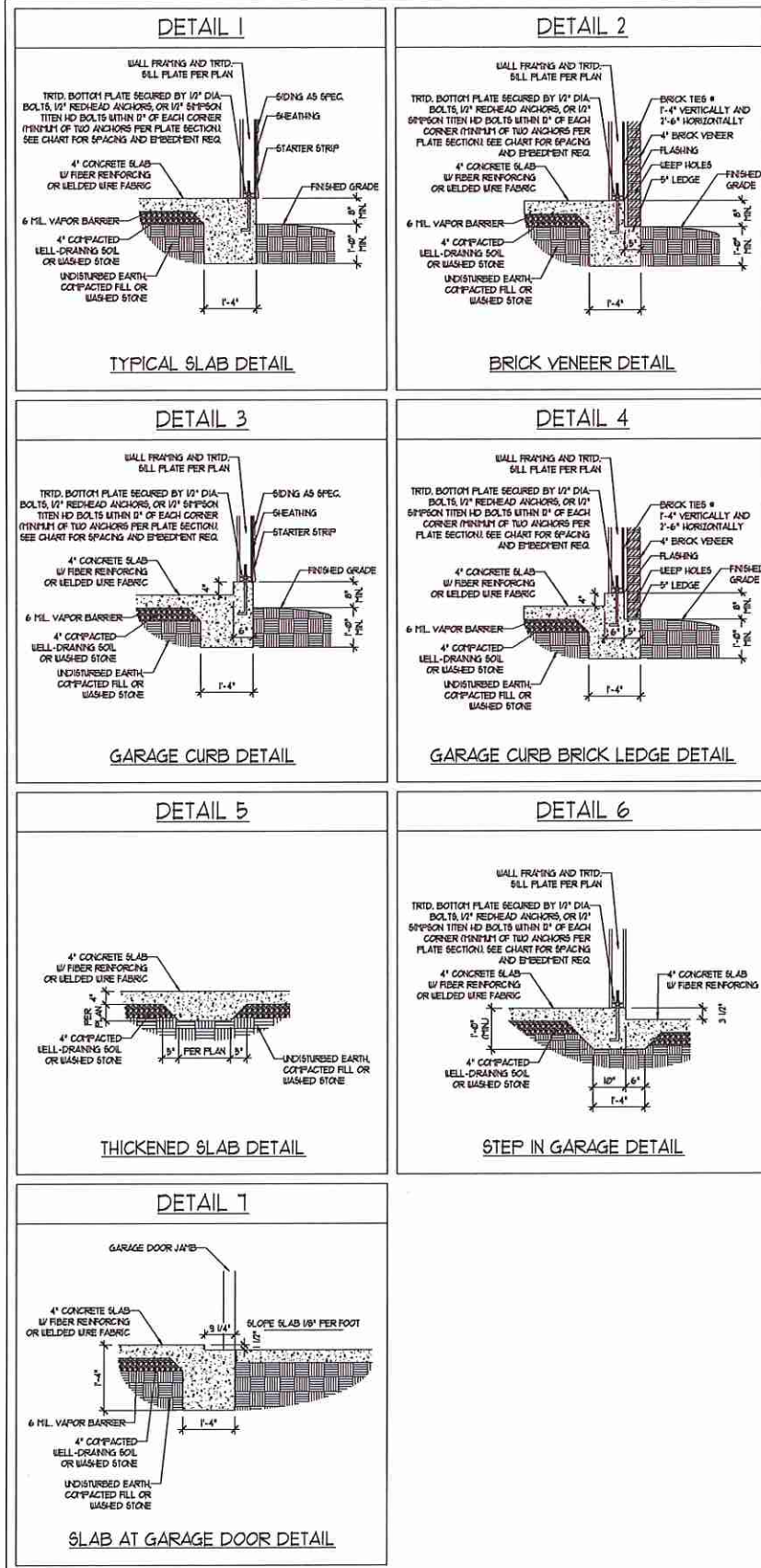
SOUTHPORT  
 H&H HOMES

DATE: OCTOBER 23, 2020  
 SCALE: 1/4" = 1'-0"  
 DRAWN BY: H&H HOMES  
 ENGINEERED BY: WFB

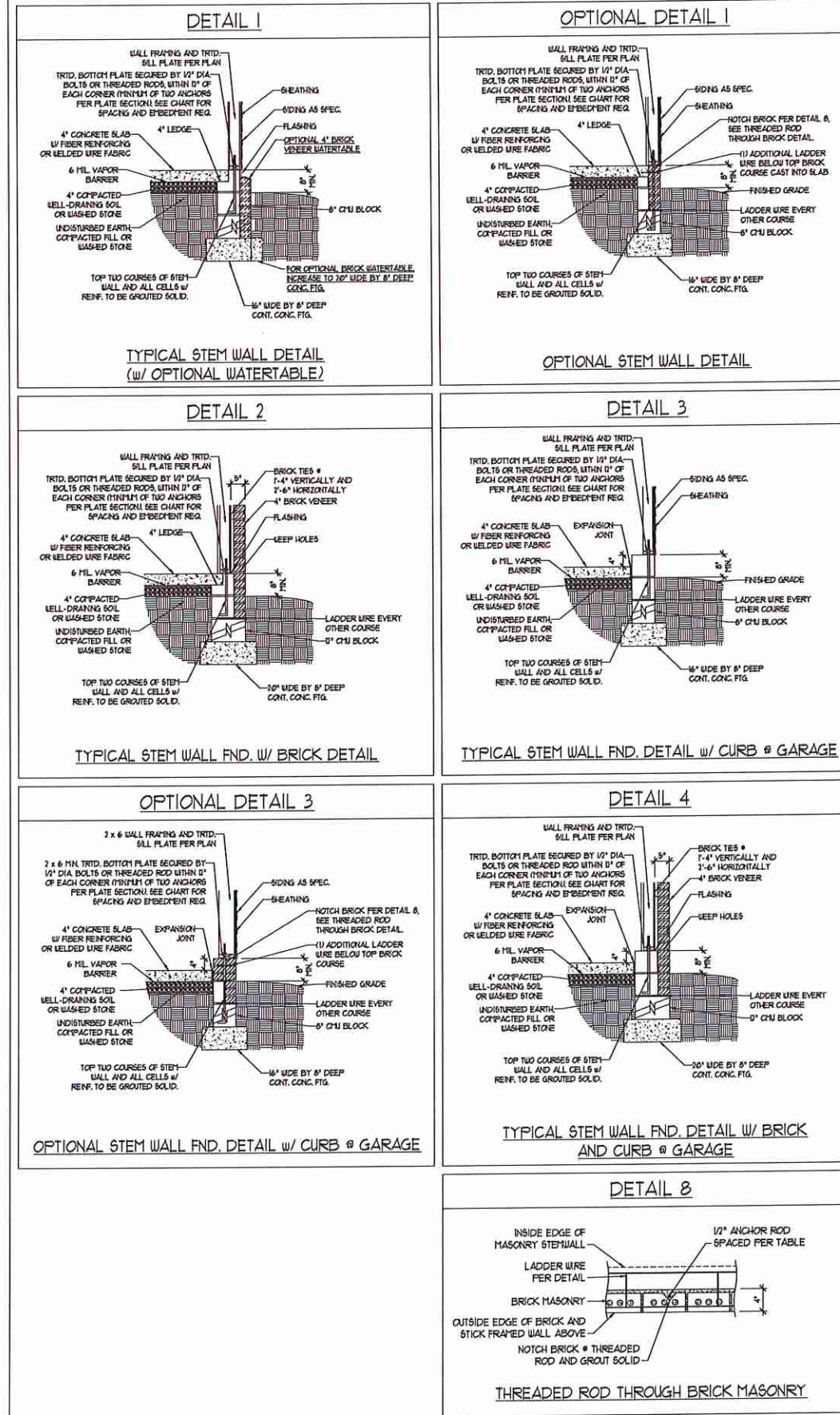


SHEET 8 OF 9  
 S-5a  
 ROOF FRAMING  
 PLAN

MONOLITHIC SLAB DETAILS



STEMWALL DETAILS



MASONRY STEMWALL SPECIFICATIONS

WALL HEIGHT (FEET)	MASONRY WALL TYPE			
	8" CMU	4" BRICK AND 4" CMU	4" BRICK AND 8" CMU	12" CMU
2 AND BELOW	UNGROUTED	GROUT SOLID	UNGROUTED	UNGROUTED
3	UNGROUTED	GROUT SOLID	UNGROUTED	UNGROUTED
4	GROUT SOLID	GROUT SOLID w/ #4 REBAR @ 48" O.C.	GROUT SOLID	GROUT SOLID w/ #4 REBAR @ 64" O.C.
5	GROUT SOLID w/ #4 REBAR @ 36" O.C.	NOT APPLICABLE	GROUT SOLID w/ #4 REBAR @ 36" O.C.	GROUT SOLID w/ #4 REBAR @ 64" O.C.
6	GROUT SOLID w/ #4 REBAR @ 24" O.C.	NOT APPLICABLE	GROUT SOLID w/ #4 REBAR @ 24" O.C.	GROUT SOLID w/ #4 REBAR @ 64" O.C.
7 AND GREATER	ENGINEERED DESIGN BASED ON SITE CONDITIONS			

- STRUCTURAL NOTES:
- WALL HEIGHT MEASURED FROM TOP OF FOOTING TO TOP OF THE WALL.
  - THE MULTIPLE WITNESSES TOGETHER WITH LADDER WIRE AT 18" O.C. VERTICALLY.
  - CHART APPLICABLE FOR HOUSE FOUNDATION ONLY, CONSULT ENGINEER FOR DESIGN OF GARAGE FOUNDATION NOT COMMON TO HOUSE.
  - BACKFILL OF CLEAN 1/2" #1 WASHED STONE IS ALLOWABLE.
  - BACKFILL OF WELL DRAINED OR SAND - GRAVEL MIXTURE SOILS (45 PSF/FT BELOW GRADE) CLASSIFIED AS GROUP 1 ACCORDING TO UNIFIED SOILS CLASSIFICATION SYSTEM IN ACCORDANCE WITH TABLE 4.05(1) OF THE 2018 INTERNATIONAL RESIDENTIAL CODE ARE ALLOWABLE.
  - FREP SLAB PER (R506.2) AND R506.2.2 BASE OF THE 2018 INTERNATIONAL RESIDENTIAL CODE. MINIMUM 24" LAP SPLICE LENGTH.
  - LOCATE REBAR IN CENTER OF FOUNDATION WALL.
  - WHERE REQUIRED, FILL BLOCK SOLID WITH TYPE 'S' MORTAR OR 3000 PSI GROUT. USE OF 'LOW LIFT GROUTING' METHOD REQUIRED WHEN FILLING WALLS WITH GROUT AT HEIGHTS OF 5' AND GREATER.

ANCHOR SPACING AND EMBEDMENT

WIND ZONE	120 MPH	130 MPH
SPACING	6'-0" O.C.	4'-0" O.C.
EMBEDMENT	1'	15" INTO MASONRY 1" INTO CONCRETE

**J.S. THOMPSON ENGINEERING INC.**  
606 WADE AVE. SUITE 100 FAYLEIGH, NC 27665  
PHONE: (919) 959-1019 FAX: (919) 789-9921  
N.C. LICENSE NO. C-1133

120 MPH - 130 MPH ULTIMATE DESIGN WIND SPEED  
FOUNDATION DETAILS

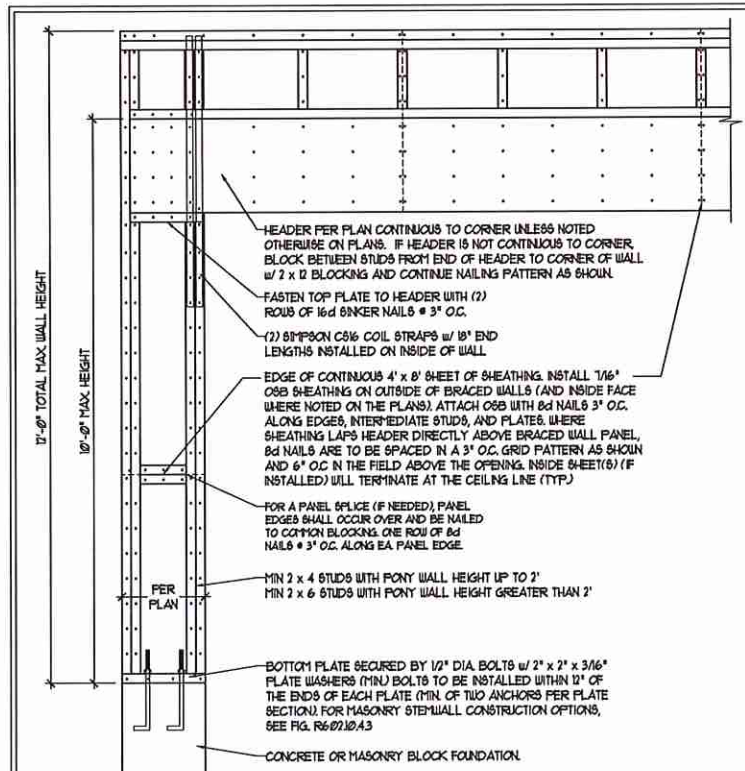
DATE: NOVEMBER 14, 2018  
SCALE: NTS  
DRAWN BY: JST  
ENGINEERED BY: JES



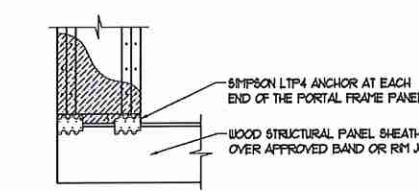
D-1  
FOUNDATION DETAILS

**GENERAL WALL BRACING NOTES:**

1. WALL BRACING DESIGNED IN ACCORDANCE WITH CHAPTER 6 OF THE 2018 NC RESIDENTIAL BUILDING CODE (NRC). TABLES AND FIGURES REFERENCED ARE FROM THE 2018 NRC.
2. SEE THIS SHEET FOR GENERAL DETAILS. REFER TO THE 2018 NRC FOR ADDITIONAL INFORMATION AS NEEDED.
3. SEE STRUCTURAL SHEETS FOR BRACED WALL LOCATIONS, DIMENSIONS, HOLD DOWN TYPE AND LOCATIONS, BRACED WALL LINE KEY WITH WALL DESIGN SUMMARY OF REQUIRED/PROVIDED TOTALS FOR EACH WALL LINE AND ANY SPECIAL NOTES OR REQUIREMENTS.
4. ALL EXTERIOR WALLS ARE TO BE SHEATHED WITH CS-USP IN ACCORDANCE WITH SECTION R6-02.10.3 UNLESS NOTED OTHERWISE.
5. ALL EXTERIOR AND INTERIOR WALLS TO HAVE 1/2" GYPSUM INSTALLED. WHEN NOT USING METHOD 'GB', GYPSUM TO BE FASTENED PER TABLE R10-2.3.5. METHOD GB TO BE FASTENED PER TABLE R6-02.10.1.
6. CS-USP REFERS TO THE 'CONTINUOUS SHEATHING - WOOD STRUCTURAL PANELS' WALL BRACING METHOD. 1/6" OSB SHEATHING IS TO BE INSTALLED ON ALL EXTERIOR WALLS ATTACHED w/ 6d COMMON NAILS OR 8d (2 1/2" LONG x 0.131" DIAMETER) NAILS SPACED 6" O.C. ALONG PANEL EDGES AND 12" O.C. IN THE FIELD (UNO).
7. GB REFERS TO THE 'GYPSUM BOARD' WALL BRACING METHOD. 1/2" (MIN) GYPSUM WALL BOARD IS TO BE INSTALLED ON BOTH SIDES OF THE BRACED WALL. FASTENED WITH 1 1/4" SCREWS OR 1 5/8" NAILS 6" SPACED 1" O.C. ALONG PANEL EDGES INCLUDING TOP AND BOTTOM PLATES AND INTERMEDIATE SUPPORTS (UNO). VERIFY ALL FASTENER OPTIONS FOR 1/2" AND 5/8" GYPSUM PRIOR TO CONSTRUCTION. FOR INTERIOR FASTENER OPTIONS SEE TABLE R10-2.3.5. FOR EXTERIOR FASTENER OPTIONS SEE TABLE R6-02.3(1). EXTERIOR GB TO BE INSTALLED VERTICALLY.
8. REQUIRED BRACED WALL LENGTH FOR EACH SIDE OF THE CIRCUMSCRIBED RECTANGLE ARE INTERPOLATED PER TABLE R6-02.10.3. METHOD CS-USP CONTRIBUTES ITS ACTUAL LENGTH, METHOD GB CONTRIBUTES 5 TIMES ITS ACTUAL LENGTH, AND METHOD PF CONTRIBUTES 15 TIMES ITS ACTUAL LENGTH.

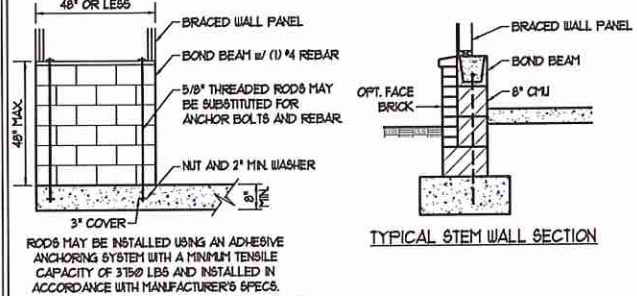
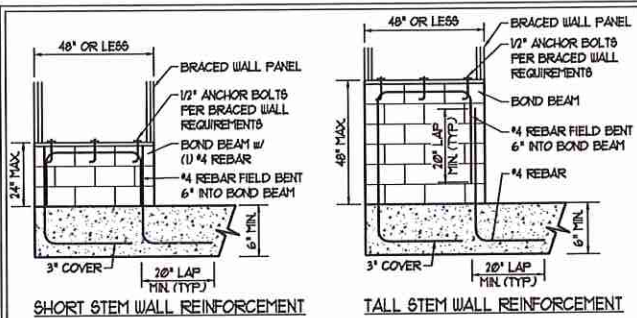


OVER CONCRETE OR MASONRY BLOCK FOUNDATION

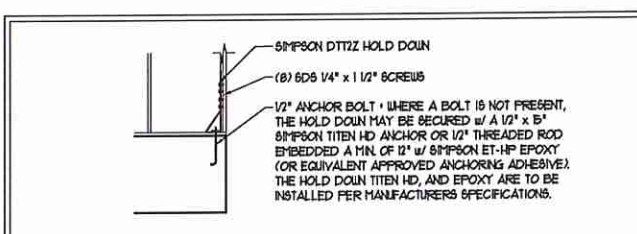
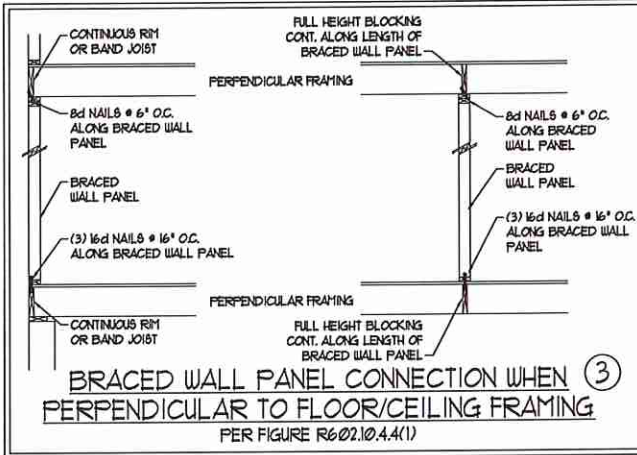


OVER RAISED WOOD FLOOR - FRAMING ANCHOR OPTION  
\* APPLICABLE w/ GREATER THAN 12" KNEE WALL HEIGHTS IN CRAIL SPACE AND ABOVE FRAMED BASEMENT WALLS \*

METHOD PF-PORTAL FRAME DETAIL ①

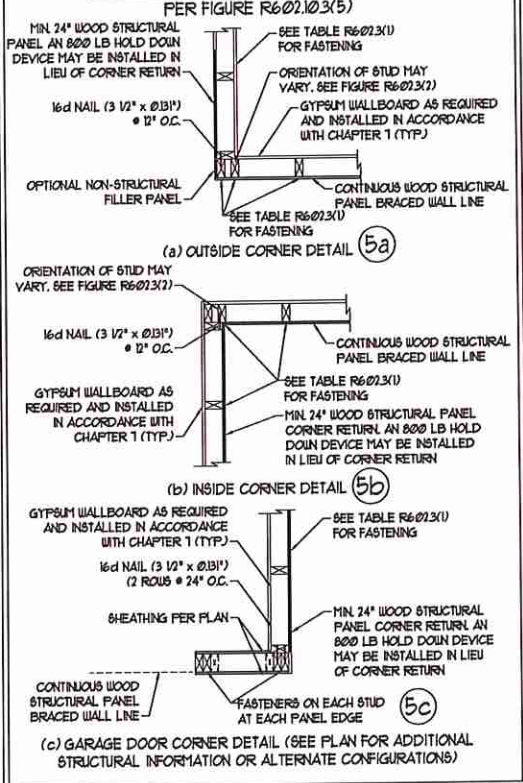


NOTE: GROUT BOND BEAMS AND ALL CELLS WHICH CONTAIN REBAR THREADED RODS AND ANCHOR BOLTS  
**MASONRY STEM WALLS SUPPORTING BRACED WALL PANELS** ②  
PER FIGURE R6-02.10.4.3

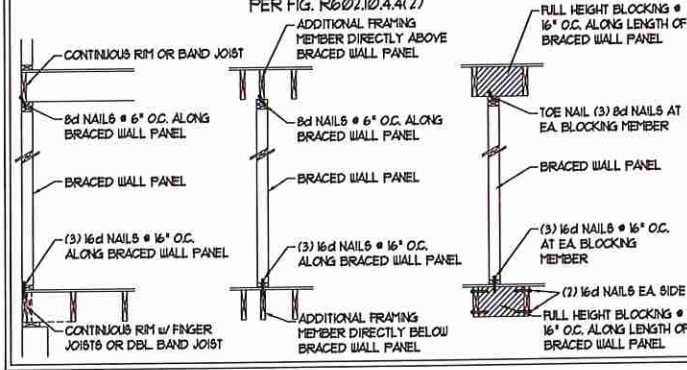


**HOLD DOWN DETAIL FOR MASONRY FOUNDATION OR MONOLITHIC SLAB** ④  
\* APPLICABLE ONLY WHERE SPECIFIED ON PLAN \*

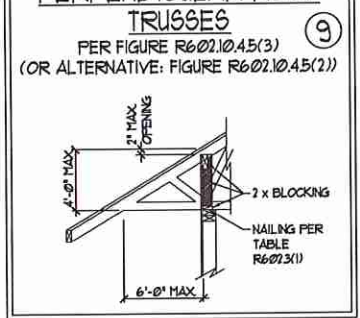
**TYPICAL EXTERIOR CORNER FRAMING FOR CONTINUOUS SHEATHING** ⑤



**BRACED WALL PANEL CONNECTION WHEN PARALLEL TO FLOOR/CEILING FRAMING** ⑥



**BRACED WALL PANEL CONNECTION TO PERPENDICULAR RAFTERS** ⑧



**BRACED WALL PANEL CONNECTION TO PERPENDICULAR ROOF TRUSSES** ⑨



This sealed page is to be used in conjunction with a full plan set engineered by J.S. Thompson Engineering, Inc. only. Use of this individual sealed page within architectural pages or shop drawings by others is a punishable offense under N.C. Statute § 89C-23



**J.S. THOMPSON ENGINEERING, INC**  
606 WADE AVE. SUITE 104 RALEIGH, NC 27605  
PHONE: (919) 789-9919 FAX: (919) 789-9921  
N.C. LICENSE NO.: C-1733

120 MPH - 130 MPH ULTIMATE DESIGN WIND SPEED  
WALL BRACING NOTES AND DETAILS

DATE: NOVEMBER 14, 2018  
SCALE: 1/4" = 1'-0"  
DRAWN BY: JST  
ENGINEERED BY: JST

D-2  
BRACED WALL NOTES AND DETAILS AND PF DETAIL

10/27/2020

**GENERAL NOTES**

- ENGINEER'S SEAL APPLIES ONLY TO STRUCTURAL COMPONENTS INCLUDING ROOF RAFTERS, HIPS, VALLEYS, RIDGES, FLOORS, WALLS, BEAMS, HEADERS, COLUMNS, CANTILEVERS, OFFSET LOAD BEARING WALLS, PIERS, GIRDER SYSTEM AND FOOTINGS. ENGINEER'S SEAL DOES NOT CERTIFY DIMENSIONAL ACCURACY OF ARCHITECTURAL LAYOUT INCLUDING ROOF. ENGINEER'S SEAL DOES NOT APPLY TO I-JOIST OR FLOOR/ROOF TRUSS LAYOUT DESIGN AND ACCURACY.
- ALL CONSTRUCTION SHALL CONFORM TO THE LATEST REQUIREMENTS OF THE NORTH CAROLINA RESIDENTIAL CODE (NRC), 2018 EDITION, PLUS ALL LOCAL CODES AND REGULATIONS. THE STRUCTURAL ENGINEER IS NOT RESPONSIBLE FOR, AND WILL NOT HAVE CONTROL OF, CONSTRUCTION MEANS, METHODS, TECHNIQUES, SEQUENCES OR PROCEDURES, OR SAFETY PRECAUTIONS AND PROGRAMS IN CONNECTION WITH THE CONSTRUCTION WORK. NOR WILL THE ENGINEER BE RESPONSIBLE FOR THE CONTRACTOR'S FAILURE TO CARRY OUT THE CONSTRUCTION WORK IN ACCORDANCE WITH THE CONTRACT DOCUMENTS.
- STRUCTURAL DESIGN BASED ON THE PROVISIONS OF THE NRC, 2018 EDITION (R301.4 - R301.7)
 

DESIGN CRITERIA:	LIVE LOAD (PSF)	DEAD LOAD (PSF)	DEFLECTION (IN)
ATTIC WITH LIMITED STORAGE	20	10	L/140 (L/360 w/ BRITTLE FINISHES)
ATTIC WITHOUT STORAGE	10	10	L/360
DECKS	40	10	L/360
EXTERIOR BALCONIES	40	10	L/360
FIRE ESCAPES	40	10	L/360
HANDRAILS/GUARDRAILS	200 LB OR 50' (PLF)	10	L/360
PASSENGER VEHICLE GARAGE	50	10	L/360
ROOFS OTHER THAN SLEEPING ROOM	40	10	L/360
SLEEPING ROOMS	30	10	L/360
STAIRS	40	10	L/360
WIND LOAD (BASED ON TABLE R301.2(4) WIND ZONE AND EXPOSURE)			
GROUND SNOW LOAD, Pg	20 (PSF)		

  - I-JOIST SYSTEMS DESIGNED WITH 12 PSF DEAD LOAD AND DEFLECTION (IN) OF L/400
  - FLOOR TRUSS SYSTEMS DESIGNED WITH 12 PSF DEAD LOAD
- FOR 15 AND 100 MPH WIND ZONES, FOUNDATION ANCHORAGE IS TO COMPLY WITH SECTION R403.16 OF THE NRC, 2018 EDITION. FOR 30 MPH, 140 MPH, AND 50 MPH WIND ZONES, FOUNDATION ANCHORAGE IS TO COMPLY WITH SECTION 4504 OF THE NRC, 2018 EDITION.
- ENERGY EFFICIENCY COMPLIANCE AND INSULATION VALUES OF THE BUILDING TO BE IN ACCORDANCE WITH CHAPTER II OF THE NRC, 2018 EDITION.

**FOOTING AND FOUNDATION NOTES**

- FOUNDATION DESIGN BASED ON A MINIMUM ALLOWABLE BEARING CAPACITY OF 2000 PSF. CONTACT GEOTECHNICAL ENGINEER IF BEARING CAPACITY IS NOT ACHIEVED.
- FOR ALL CONCRETE SLABS AND FOOTINGS, THE AREA WITHIN THE PERIMETER OF THE BUILDING ENVELOPE SHALL HAVE ALL VEGETATION TOP SOIL AND FOREIGN MATERIAL REMOVED. FILL MATERIAL SHALL BE FREE OF VEGETATION AND FOREIGN MATERIAL. THE FILL SHALL BE COMPACTED TO ASSURE UNIFORM SUPPORT OF THE SLAB, AND EXCEPT WHERE APPROVED, THE FILL DEPTHS SHALL NOT EXCEED 24" FOR CLEAN SAND OR GRAVEL. A 4" THICK BASED COURSE CONSISTING OF CLEAN GRADED SAND OR GRAVEL SHALL BE PLACED. A BASE COURSE IS NOT REQUIRED WHERE A CONCRETE SLAB IS INSTALLED ON WELL-DRAINED OR SAND-GRAVEL MIXTURE SOILS CLASSIFIED AS GROUP 1, ACCORDING TO THE UNITED SOIL CLASSIFICATION SYSTEM IN ACCORDANCE WITH TABLE R405.1 OF THE NRC, 2018 EDITION.
- PROPERLY DEWATER ENCAVATION PRIOR TO POURING CONCRETE WHEN BOTTOM OF CONCRETE SLAB IS AT OR BELOW WATER TABLE. IF APPLICABLE, 3/4" - 1" DEEP CONTROL JOINTS ARE TO BE SAUED WITHIN 4 TO 12 HOURS OF CONCRETE FINISHING AND WALL LOCATIONS HAVE BEEN MARKED. ADJUST WHERE NECESSARY.
- CONCRETE SHALL CONFORM TO SECTION R402.2 OF THE NRC, 2018 EDITION. CONCRETE REINFORCING STEEL TO BE ASTM A615 GRADE 60. WELDED WIRE FABRIC TO BE ASTM A185. MAINTAIN A MINIMUM CONCRETE COVER AROUND REINFORCING STEEL OF 3" IN FOOTINGS AND 1 1/2" IN SLABS. FOR POURED CONCRETE WALLS, CONCRETE COVER FOR REINFORCING STEEL MEASURED FROM THE INSIDE FACE OF THE WALL SHALL NOT BE LESS THAN 3/4". CONCRETE COVER FOR REINFORCING STEEL MEASURED FROM THE OUTSIDE FACE OF THE WALL SHALL NOT BE LESS THAN 1 1/2" FOR #5 BARS OR SMALLER, AND NOT LESS THAN 2" FOR #6 BARS OR LARGER.
- MASONRY UNITS TO CONFORM TO ACE 530/ASCE 5/1715 402. MORTAR SHALL CONFORM TO ASTM C210.
- THE UNSUPPORTED HEIGHT OF MASONRY PIERS SHALL NOT EXCEED FOUR TIMES THEIR LEAST DIMENSION FOR UNFILLED HOLLOW CONCRETE MASONRY UNITS AND TEN TIMES THEIR LEAST DIMENSION FOR SOLID OR SOLID FILLED PIERS. PIERS MAY BE FILLED SOLID WITH CONCRETE OR TYPE M OR S MORTAR. PIERS AND WALLS SHALL BE CAPPED WITH 8" OF SOLID MASONRY.
- THE CENTER OF EACH OF THE PIERS SHALL BEAR IN THE MIDDLE THIRD OF ITS RESPECTIVE FOOTING. EACH GIRDER SHALL BEAR IN THE MIDDLE THIRD OF THE PIERS.
- ALL CONCRETE AND MASONRY FOUNDATION WALLS ARE TO BE CONSTRUCTED IN ACCORDANCE WITH THE PROVISIONS OF SECTION R404 OF THE NRC, 2018 EDITION OR IN ACCORDANCE WITH ACI 318, ACI 332, NCHA TR69-A OR ACE 530/ASCE 5/1715 402. MASONRY FOUNDATION WALLS ARE TO BE REINFORCED PER TABLE R404.1X(1), R404.1X(2), R404.1X(3), OR R404.1X(4) OF THE NRC, 2018 EDITION. CONCRETE FOUNDATION WALLS ARE TO BE REINFORCED PER TABLE R404.1X(5) OF THE NRC, 2018 EDITION. STEP CONCRETE FOUNDATION WALLS TO 2 x 6 FRAMED WALLS AT 16" O.C. WHERE GRADE PERMITS (NO).

This sealed page is to be used in conjunction with a full plan set engineered by J.S. Thompson Engineering, Inc. only. Use of this individual sealed page within architectural pages or shop drawings by others is a punishable offense under N.C. Statute § 89C-23

**FRAMING NOTES**

- ALL FRAMING LUMBER SHALL BE 2" OFF MINIMUM (Fb = 875 PSF, Fv = 375 PSF, E = 16,000,000 PSF) UNLESS NOTED OTHERWISE (NO). ALL TREATED LUMBER SHALL BE 2" OYP MINIMUM (Fb = 975 PSF, Fv = 475 PSF, E = 16,000,000 PSF) UNLESS NOTED OTHERWISE (NO).
- LAMINATED VENEER LUMBER (LVL) SHALL HAVE THE FOLLOWING MINIMUM PROPERTIES: Fb = 2600 PSF, Fv = 285 PSF, E = 1,900,000 PSF. LAMINATED STRAND LUMBER (LSL) SHALL HAVE THE FOLLOWING MINIMUM PROPERTIES: Fb = 2375 PSF, Fv = 310 PSF, E = 850,000 PSF. PARALLEL STRAND LUMBER (PSL) UP TO 1" DEPTH SHALL HAVE THE FOLLOWING MINIMUM PROPERTIES: Fc = 2500 PSF, E = 1,600,000 PSF. PARALLEL STRAND LUMBER (PSL) MORE THAN 1" DEPTH SHALL HAVE THE FOLLOWING MINIMUM PROPERTIES: Fc = 2000 PSF, E = 2,000,000 PSF. INSTALL ALL CONNECTIONS PER MANUFACTURER'S SPECIFICATIONS.
- STRUCTURAL STEEL SHALL CONFORM TO THE FOLLOWING ASTM SPECIFICATIONS
 

A. IJ AND IIT SHAPES:	ASTM A992
B. CHANNELS AND ANGLES:	ASTM A36
C. PLATES AND BARS:	ASTM A36
D. HOLLOW STRUCTURAL SECTIONS:	ASTM A500 GRADE B
E. STEEL PIPE:	ASTM A53, GRADE B, TYPE E OR S
- STEEL BEAMS SHALL BE SUPPORTED AT EACH END WITH A MINIMUM BEARING LENGTH OF 3 1/2" AND FULL FLANGE WIDTH (NO). PROVIDE SOLID BEARING FROM BEAM SUPPORT TO FOUNDATION. BEAMS SHALL BE ATTACHED AT THE BOTTOM FLANGE TO EACH SUPPORT AS FOLLOWS (NO):
 

A. WOOD FRAMING	(2) 1/2" DIA. x 4" LONG LAG SCREWS
B. CONCRETE	(2) 1/2" DIA. x 4" WEDGE ANCHORS
C. MASONRY (FULLY GROUTED)	(2) 1/2" DIA. x 4" LONG SIMPSON TITEN HD ANCHORS

LATERAL SUPPORT IS CONSIDERED ADEQUATE PROVIDING THE JOISTS ARE TOE NAILED TO THE 2x NAILER ON TOP OF THE STEEL BEAM, AND THE 2x NAILER IS SECURED TO THE TOP OF THE STEEL BEAM w/ (2) ROWS OF SELF TAPPING SCREWS @ 16" O.C. OR (2) ROWS OF 1/2" DIAMETER BOLTS @ 16" O.C. IF 1/2" BOLTS ARE USED TO FASTEN THE NAILER, THE STEEL BEAM SHALL BE FABRICATED w/ (2) ROWS OF 3/8" DIAMETER HOLES @ 16" O.C.
- SQUARES DENOTE POINT LOADS WHICH REQUIRE SOLID BLOCKING TO GIRDER OR FOUNDATION. SHADED SQUARES DENOTE POINT LOADS FROM ABOVE WHICH REQUIRE SOLID BLOCKING TO SUPPORTING MEMBER BELOW.
- ALL LOAD BEARING HEADERS TO CONFORM TO TABLE R602.1(1) AND R602.1(2) OF THE NRC, 2018 EDITION OR BE (2) 2 x 6 WITH (1) JACK AND (1) KING STUD EACH END (NO), WHICHEVER IS GREATER. ALL HEADERS TO BE SECURED TO EACH JACK STUD WITH (4) 8d NAILS. ALL BEAMS TO BE SUPPORTED WITH (2) STUDS AT EACH BEARING POINT (NO). INSTALL KING STUDS PER SECTION R602.15 OF THE NORTH CAROLINA RESIDENTIAL CODE, 2018 EDITION.
- ALL BEAMS, HEADERS, OR GIRDER TRUSSES PARALLEL TO WALL ARE TO BEAR FULLY ON (1) JACK OR (2) STUDS MINIMUM OR THE NUMBER OF JACKS OR STUDS NOTED. ALL BEAMS OR GIRDER TRUSSES PERPENDICULAR TO WALL AND SUPPORTED BY (3) STUDS OR LESS ARE TO HAVE 1 1/2" MINIMUM BEARING (NO). ALL BEAMS OR GIRDER TRUSSES PERPENDICULAR TO WALL AND SUPPORTED BY MORE THAN (3) STUDS OR OTHER NOTED COLUMN ARE TO BEAR FULLY ON SUPPORT COLUMN FOR ENTIRE WALL DEPTH (NO). BEAM ENDS THAT BUTT INTO ONE ANOTHER ARE TO EACH BEAR EQUAL LENGTHS (NO).
- FLITCH BEAMS SHALL BE BOLTED TOGETHER USING 1/2" DIAMETER BOLTS (ASTM A307) WITH WASHERS PLACED AT THREADED END OF BOLT. BOLTS SHALL BE SPACED AT 24" CENTERS (MAXIMUM), AND STAGGERED AT TOP AND BOTTOM OF BEAM (2" EDGE DISTANCE), WITH (2) BOLTS LOCATED AT 6" FROM EACH END (NO).
- ALL I-JOIST OR TRUSS LAYOUTS ARE TO BE IN COMPLIANCE WITH THE OVERALL DESIGN SPECIFIED ON THE PLANS. ALL DEVIATIONS ARE TO BE BROUGHT TO THE ATTENTION OF THE ENGINEER OF RECORD PRIOR TO INSTALLATION.
- BRACED WALL PANELS SHALL BE CONSTRUCTED ACCORDING TO THE NORTH CAROLINA RESIDENTIAL CODE 2018 EDITION WALL BRACING CRITERIA. THE AMOUNT, LENGTH, AND LOCATION OF BRACING SHALL COMPLY WITH ALL APPLICABLE TABLES IN SECTION R602.10.
- PROVIDE DOUBLE JOIST UNDER ALL WALLS PARALLEL TO FLOOR JOISTS. PROVIDE SUPPORT UNDER ALL WALLS PARALLEL TO FLOOR TRUSSES OR I-JOISTS PER MANUFACTURER'S SPECIFICATIONS. INSTALL BLOCKING BETWEEN JOISTS OR TRUSSES FOR POINT LOAD SUPPORT FOR ALL POINT LOADS ALONG OFFSET LOAD LINES.
- FOR ALL HEADERS SUPPORTING BRICK VENEER THAT ARE LESS THAN 8'-0" IN LENGTH, REST A 6" x 4" x 5/16" STEEL ANGLE WITH 6" MINIMUM EMBEDMENT AT SIDES FOR BRICK SUPPORT (NO). FOR ALL HEADERS 8'-0" AND GREATER IN LENGTH, BOLT A 6" x 4" x 5/16" STEEL ANGLE TO HEADER WITH 1/2" LAG SCREWS AT 12" O.C. STAGGERED FOR BRICK SUPPORT. FOR ALL BRICK SUPPORT AT ROOF LINES, BOLT A 6" x 4" x 5/16" STEEL ANGLE TO (2) 2 x 10 BLOCKING INSTALLED w/ (4) 10d NAILS EA. FLY BETWEEN WALL STUDS WITH (2) ROWS OF 1/2" LAG SCREWS AT 12" O.C. STAGGERED AND IN ACCORDANCE WITH SECTION R103.2(2) OF THE NRC, 2018 EDITION.
- FOR STICK FRAMED ROOFS: CIRCLES DENOTE (3) 2 x 4 POSTS FOR ROOF MEMBER SUPPORT. HIP SPLICES ARE TO BE SPACED A MINIMUM OF 8'-0". FASTEN MEMBERS WITH THREE ROWS OF 10d NAILS AT 16" O.C. FRAME DORMER WALLS ON TOP OF DOUBLE OR TRIPLE RAFTERS AS SHOWN (NO).
- FOR TRUSSED ROOFS: FRAME DORMER WALLS ON TOP OF 2 x 4 LADDER FRAMING AT 24" O.C. BETWEEN ADJACENT ROOF TRUSSES. STICK FRAME OVER-FRAMED ROOF SECTIONS WITH 2 x 8 RIDGES, 2 x 6 RAFTERS AT 16" O.C. AND FLAT 2 x 10 VALLEYS (NO).
- ALL 4 x 4 AND 6 x 6 POSTS TO BE INSTALLED WITH 1000 LB CAPACITY UPLIFT CONNECTORS TOP AND BOTTOM (NO). POSTS MAY BE SECURED USING ONE SIMPSON I65 OR L102 UPLIFT CONNECTOR FASTENED TO THE BAND AT THE BOTTOM AND THE BEAM AT THE TOP OF EACH POST. ONE 16" SECTION OF SIMPSON C96 COIL STRAPPING WITH (8) 8d HDG NAILS AT EACH END MAY BE USED IN LIEU OF EACH TUBS STRAP IF DESIRED. FOR MASONRY OR CONCRETE FOUNDATION USE SIMPSON POST BASE.

**J.S. THOMPSON ENGINEERING, INC**  
 605 WADE AVE. SUITE 104 RALEIGH, NC 27605  
 PHONE: (919) 789-9919 FAX: (919) 789-9921  
 N.C. LICENSE NO.: C-1733

120 MPH - 130 MPH ULTIMATE DESIGN WIND SPEED  
 STANDARD STRUCTURAL NOTES



DATE: NOVEMBER 14, 2018  
 SCALE: 1/4" = 1'-0"  
 DRAWN BY: JES  
 ENGINEERED BY: JST

S-0  
 STRUCTURAL NOTES