

TOPSAIL

NOTICE TO CONTRACTOR
All construction must comply with current NC Building Codes and is subject to field inspection and verification.

APPROVED
Limited building only review
Permit holder responsible for full compliance with the code

01/10/2022




Inventory Marked

TOPSAIL REVISION LIST - STRUCTURAL:

- 1.) ADDED JOIST SERIES AND SPACING TO SECOND FLOOR FRAMING AND CRAWL (10-17)
- 2.) REMOVED BEDROOM VAULTS AND BALLOON FRAMING (10-17)
- 3.) CHANGED STANDARD HEADER SIZE TO 2 x 6. CALLED OUT 2 x 10 WHERE NECESSARY (10-17)
- 4.) CHANGED TO (3) PLY GARAGE HEADERS (10-17)
- 5.) CODE UPDATE TO NCRC 2018 (1-19)

TOPSAIL REVISION LIST - ARCHITECTURAL:

- CHANGES ON 03-30-2020
1. CHANGED ALL CORNER BOARDS ON ELEVATIONS FROM 6" TO 4"
 2. CHANGED NOTE FOR GARAGE LABEL ON ELEVATIONS
 3. REMOVED GRIDS FROM ALL WINDOWS & DOORS ON SIDES AND REAR ELEVATIONS
 4. UPDATED ALL COACH LIGHTS ON ELEVATIONS
 5. REMOVED DUPLICATE DIMENSIONS AND LABELS FROM ALL ELEVATIONS
 6. DIMENSIONED STONE/BRICK WATER TABLE HEIGHT
 7. HATCHED 4" ROWLOCK ON WINDOWS IN ELEVATIONS WITH STONE AND BRICK
 8. UPDATED STONE HATCH TO CURRENT HATCH
 9. ADDED COLUMN DETAILS ON B-1 AND B-4 ELEVATIONS
 10. REMOVED HARDWARE ON SHUTTERS ON ALL C ELEVATIONS. CHANGED TO SHOW B&B
 11. SEPARATED ALL OPTIONS FROM BASE PLAN TO CORRESPONDING SHEETS
 12. ADDED DIAGONAL DIMENSION ON SLAB INTERFACE PLAN
 13. ADDED PLUMBING DROPS TO SLAB INTERFACE PLAN
 14. ADDED CONDUIT IN KITCHEN OF THE SLAB INTERFACE PLAN
 15. CHANGED COLUMN ON PATIO TO 8"x8"
 16. CHANGED EXTERIOR WALLS FROM 2x6 TO 2x4 EXCEPT AT SHADED AREAS
 19. REMOVED ALL 2x6 NOTES
 20. UPDATED ALL INTERIOR ROOM DIMENSIONS
 21. ADDED HOSE BIBS TO PLANS
 22. UPDATED SQUARE FOOTAGES
 23. ADDED SQUARE FOOTAGE WITH FULL BRICK VENEER
 24. PATIO CHANGED TO 12'x10'
 25. FLIPPED TUB AND REMOVED ACCESS AND NOTE FROM OWNER'S BATH 1
 26. ADDED NOTE TO LAUNDRY
 27. ADDED OPTIONAL FLOOR OUTLETS
 28. REMOVED ALL OUTLETS ON ELECTRICAL PLAN (EXCEPT OPT. FLOOR OUTLETS)
 29. REMOVED ALL TV OUTLETS
 30. REMOVED ALL PHONE OUTLETS
 31. SHOWED ALL CEILING FANS DASHED WITH NEW NOTE
 32. ADDED CO2 DETECTORS
 33. ADDED NEW ELECTRICAL KEY
 34. CHANGED SWING OF SERVICE DOOR (7-8-20)
 35. CHANGED LIGHT IN GARAGE FROM KEYLESS TO CEILING MOUNT (7-8-20)
 36. CHANGED KITCHEN LIGHT FROM 2 BULB FLUORESCENT TO 3 BULB CEILING MOUNT (7-8-20)
 37. CHANGED LIGHT OVER KITCHEN SINK TO 1 BULB CEILING MOUNT (7-8-20)
 38. REMOVED LIGHT IN SECONDARY BATH OVER TUB/SHOWER COMB (7-8-20)

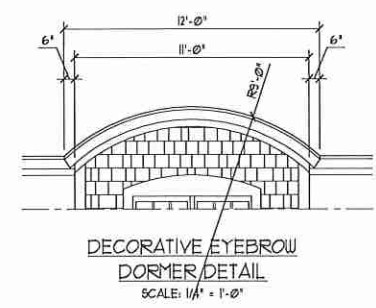
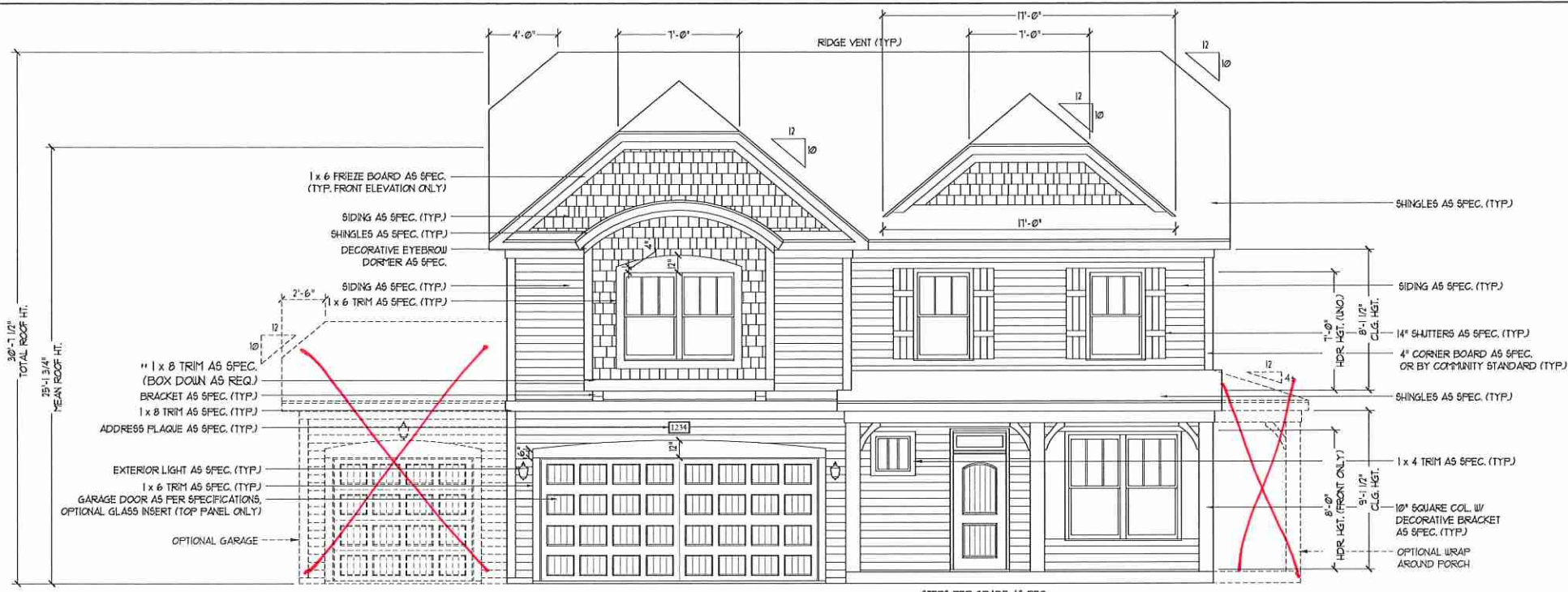
COVER SHEET

H&H HOMES
TOPSAIL

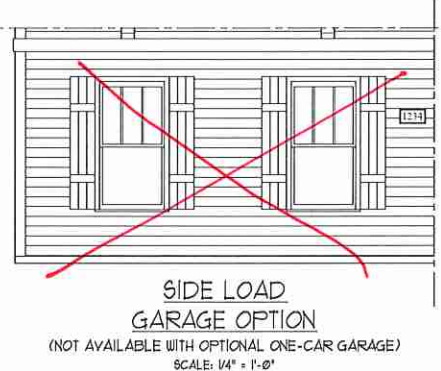
OKM000079

DATE: OCTOBER 13, 2017
REV: MARCH 30, 2020
DRAWN BY: WCG
ENGINEERED BY:
REVIEWED BY:

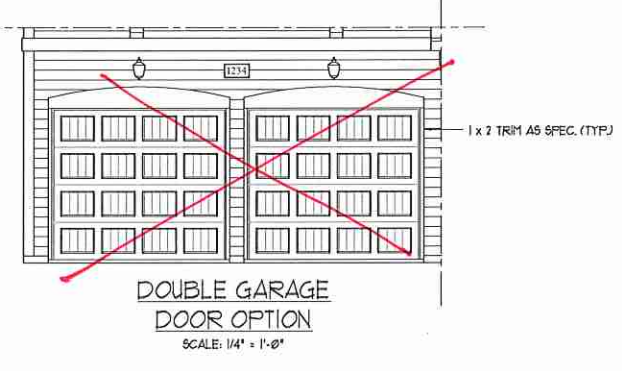
CS



FRONT ELEVATION-C
SCALE: 1/4" = 1'-0"

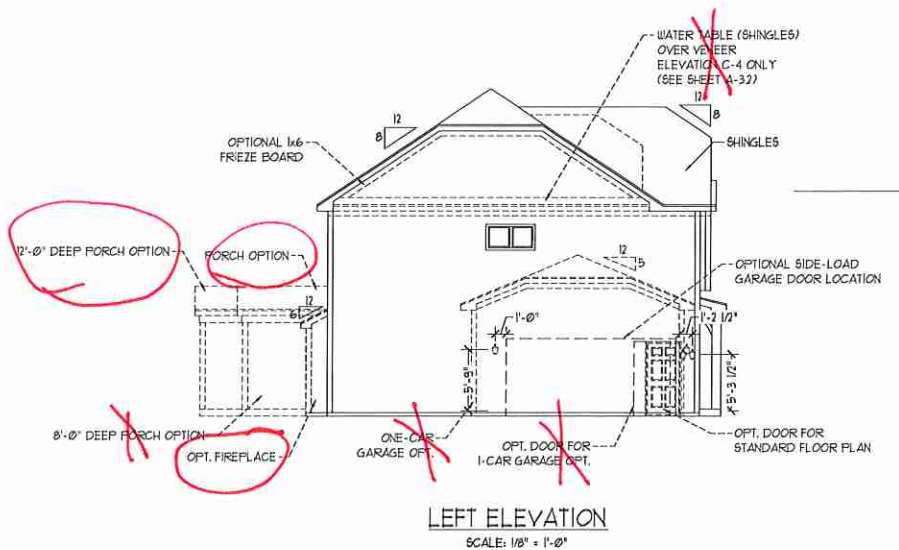


SIDE LOAD GARAGE OPTION
(NOT AVAILABLE WITH OPTIONAL ONE-CAR GARAGE)
SCALE: 1/4" = 1'-0"

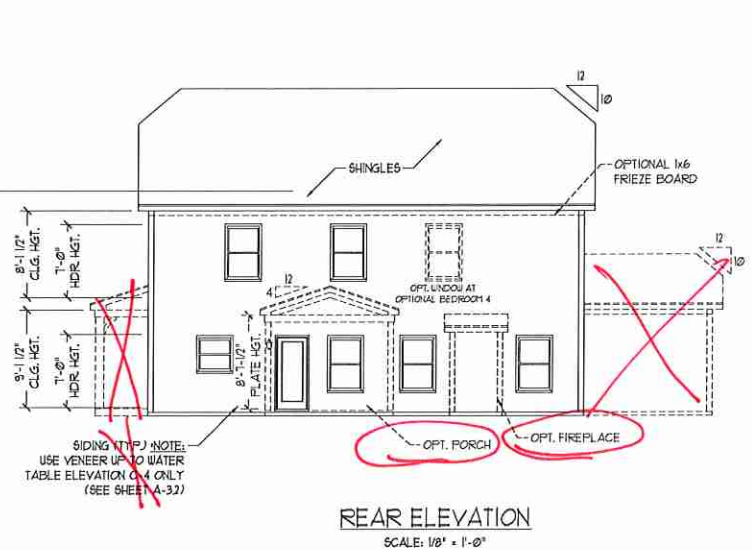


DOUBLE GARAGE DOOR OPTION
SCALE: 1/4" = 1'-0"

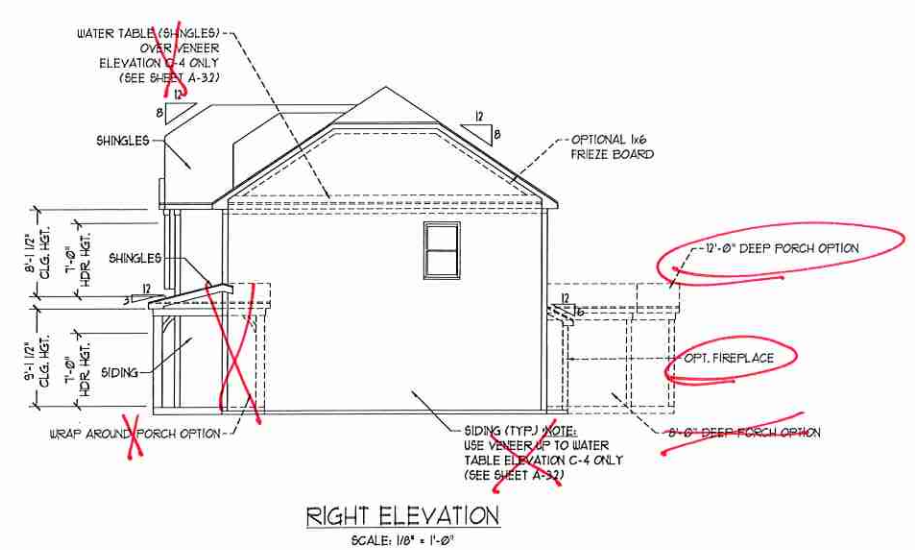
NOTE:
SEE SHEET A-2.1 FOR BRICK FRONT ELEVATIONS
SEE SHEET A-2.2 FOR STONE FRONT ELEVATIONS
SEE SHEET A-2.3 (ALL BRICK) ELEVATIONS



LEFT ELEVATION
SCALE: 1/8" = 1'-0"

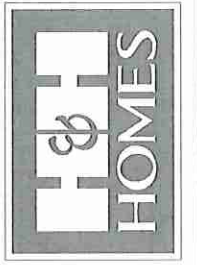


REAR ELEVATION
SCALE: 1/8" = 1'-0"



RIGHT ELEVATION
SCALE: 1/8" = 1'-0"

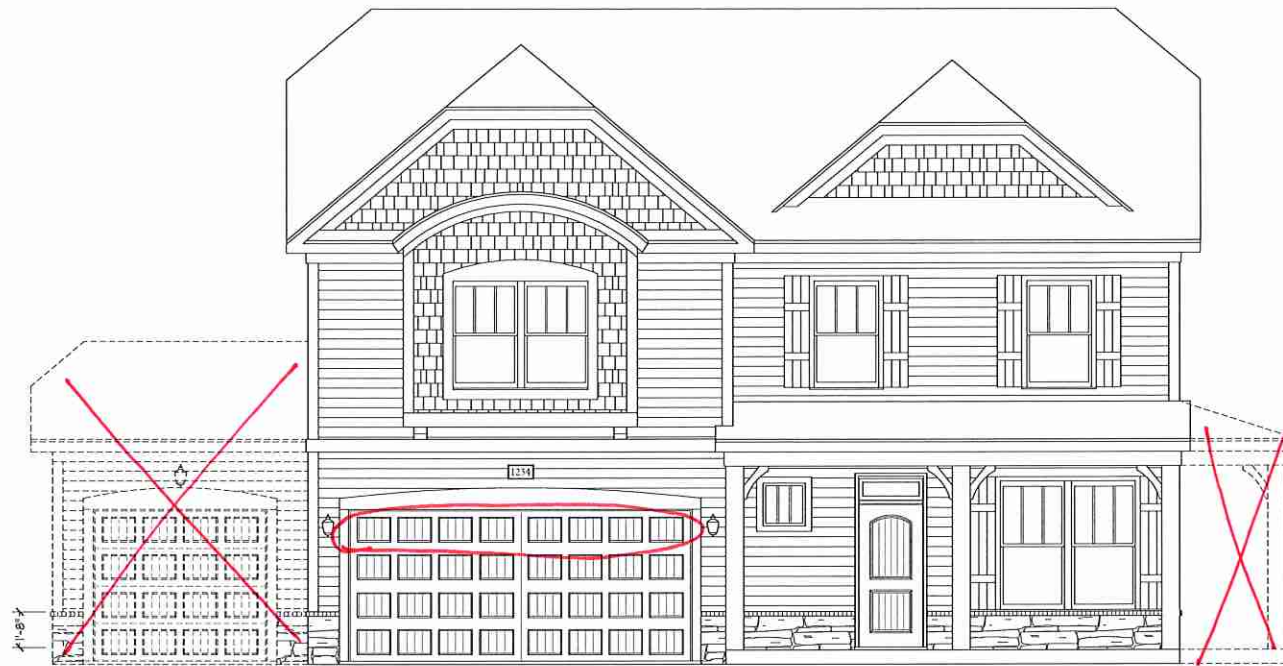
J.S. THOMPSON
ENGINEERING, INC.
655 WADE AVE., SUITE 104
RALEIGH, NC 27605
PHONE: (919) 760-9939
FAX: (919) 769-9921
N.C. LICENSE NO. C-1133



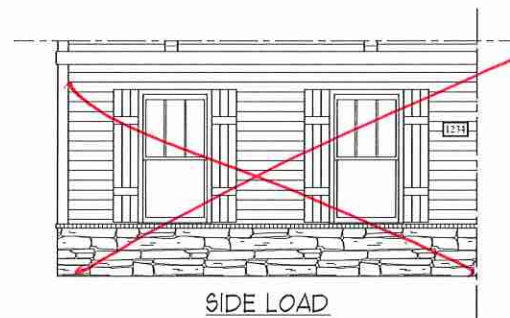
PRICES, PRODUCTIONS, INCENTIVES, FEATURES, OPTIONS, FLOOR PLANS, ELEVATIONS, DESIGNS, MATERIALS, FINISHES, DIMENSIONS, AND DIMENSIONS WITHOUT NOTICE. SQUARE FOOTAGE AND DIMENSIONS ARE ESTIMATED AND MAY VARY IN ACTUAL CONSTRUCTION. ACTUAL POSITION OF HOUSE ON LOT WILL BE DETERMINED BY THE SURVEY AND LOT PLANS. H&H HOMES, INC. IS THE SOLE PROPRIETOR AND ALL RIGHTS ARE RESERVED. CONCEPTS, FLOOR PLANS, AND ELEVATIONS ARE THE PROPERTY OF H&H HOMES, INC. USE, REPRODUCTION, ADAPTATION, OR DISPLAY OF THE PLANS IS STRICTLY PROHIBITED WITHOUT THE WRITTEN PERMISSION OF H&H HOMES, INC. COPYRIGHT 2017 H&H HOMES.

H&H HOMES, INC.
TOPSAIL

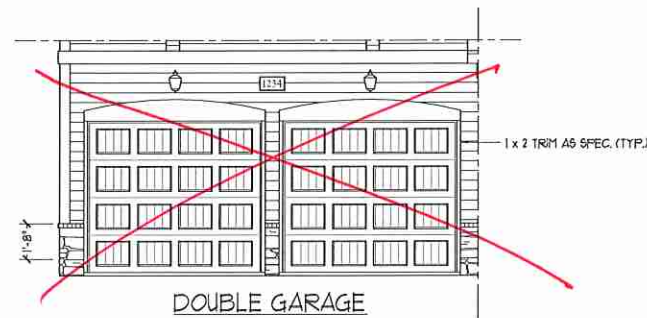
DATE: OCTOBER 13, 2017
REV.: MARCH 30, 2020
SCALE: AS NOTED
DRAWN BY:
ENGINEERED BY:
REVIEWED BY:



FRONT ELEVATION-C-2
SCALE: 1/4" = 1'-0"



SIDE LOAD
GARAGE OPTION
(NOT AVAILABLE WITH OPTIONAL ONE-CAR GARAGE)
SCALE: 1/4" = 1'-0"



DOUBLE GARAGE
DOOR OPTION
SCALE: 1/4" = 1'-0"



FRONT ELEVATION-C-3
SCALE: 1/4" = 1'-0"

BRICK OR STONE
LEDGE AS SPEC. (TYP.)

BRICK OR STONE
LEDGE AS SPEC. (TYP.)

**J.S. THOMPSON
ENGINEERING, INC.**
600 WADE AVE., SUITE 104
RALEIGH, NC 27605
PHONE: 919.788.9919
FAX: 919.788.9921
N.C. LICENSE NO. C-1733



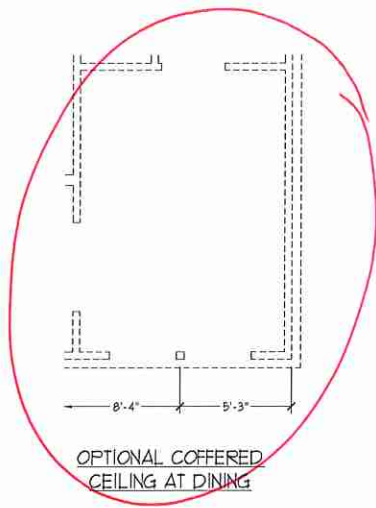
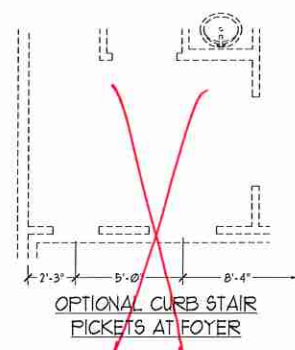
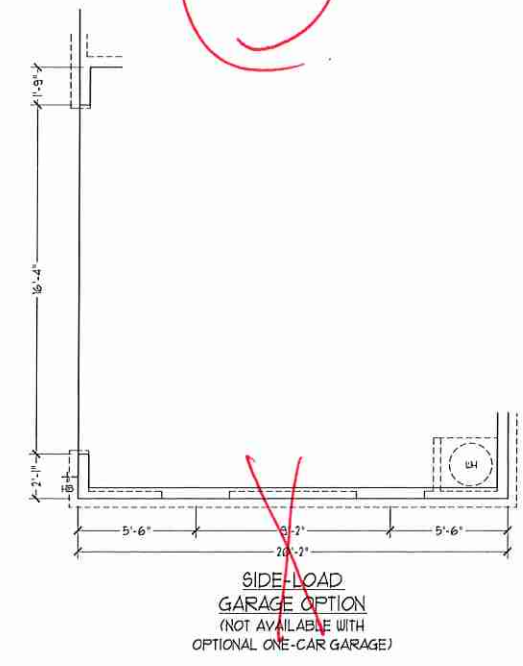
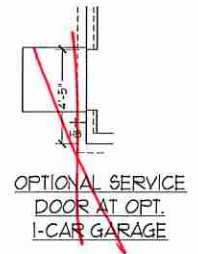
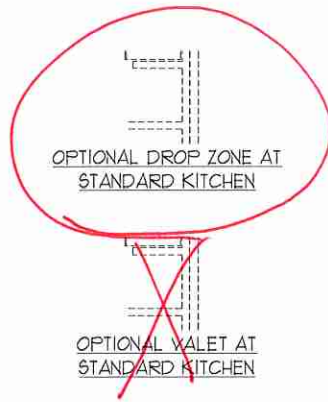
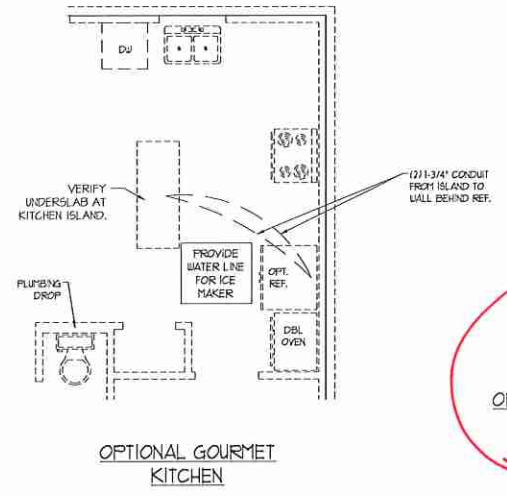
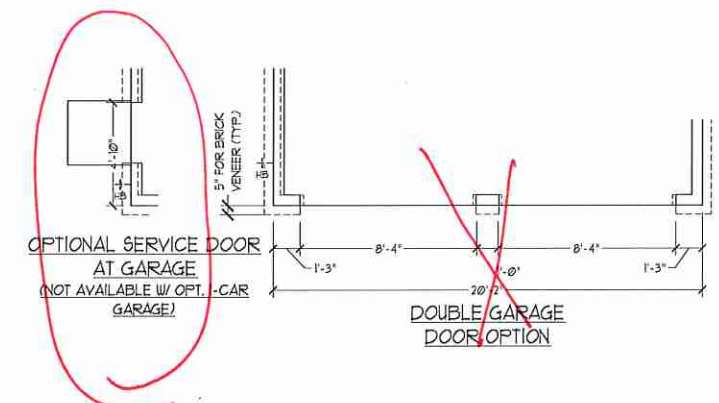
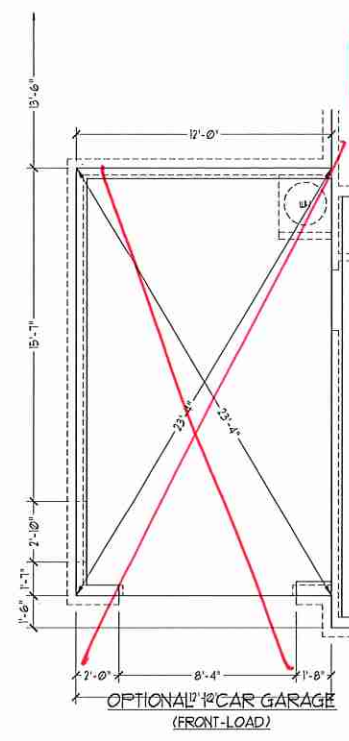
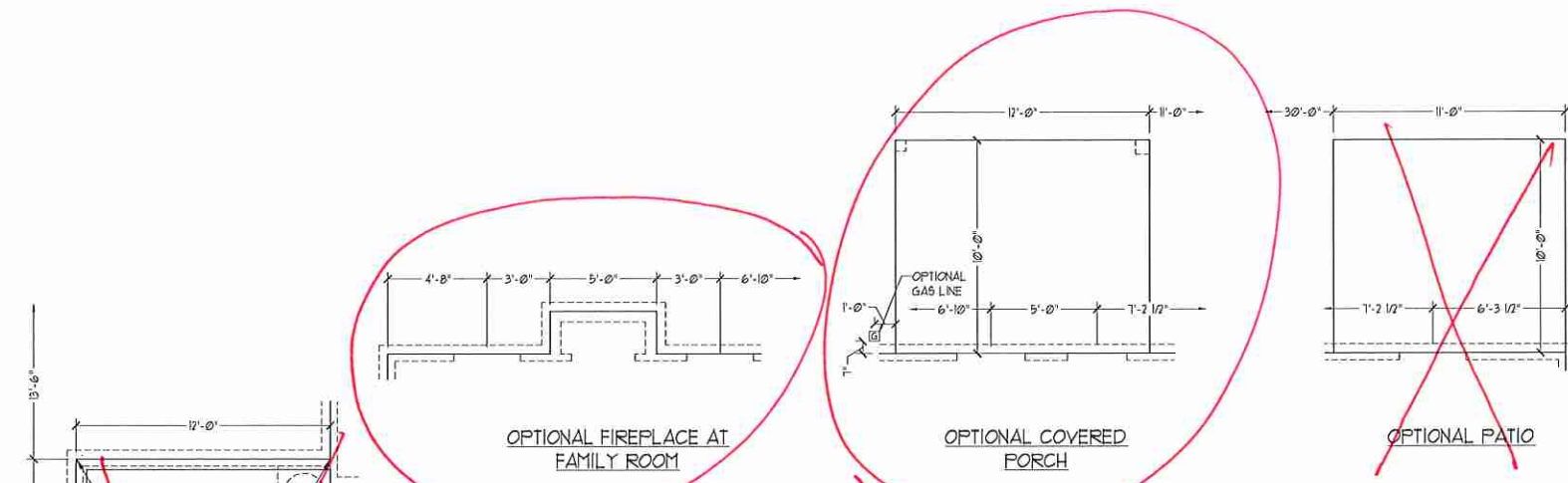
PRICES, PROMOTIONS, INCENTIVES, FEATURES,
OPTIONS, FLOOR PLANS, ELEVATIONS, DESIGN,
MATERIALS, FINISHES, AND DIMENSIONS ARE
WITHOUT NOTICE. SQUARE FOOTAGE AND DIMENSIONS
ARE ESTIMATED AND MAY VARY IN ACTUAL
CONSTRUCTION. ACTUAL POSITION OF HOUSE ON LOT
MAY VARY FROM THAT SHOWN ON THIS PLAN.
FLOOR PLANS AND ELEVATIONS ARE THE
PROPERTY OF H&H HOMES. ANY USE, REPRODUCTION,
ADAPTATION, OR DISPLAY OF THE PLANS IS STRICTLY
PROHIBITED WITHOUT THE WRITTEN CONSENT OF
H&H HOMES. COPYRIGHT 2017 H&H HOMES.

H&H HOMES, INC.
TOPSAIL

DATE: OCTOBER 13, 2017
REV.: MARCH 30, 2020
SCALE: AS NOTED
DRAWN BY:
ENGINEERED BY:
REVIEWED BY:

C-2 & C-3
ELEVATION W/
STONE

A-3.2



J.S. THOMPSON ENGINEERING, INC.
 620 WADE AVE., SUITE 104
 RALEIGH, NC 27605
 PHONE: 919 789-9919
 FAX: 919 789-9921
 N.C. LICENSE NO. C-1233



PRICES, PRODUCTIONS, INCENTIVES, FEATURES, OPTIONS, FLOOR PLANS, ELEVATIONS, DESIGN, MATERIALS, FINISHES, SCHEDULES, AND DIMENSIONS WITHOUT NOTICE. SQUARE FOOTAGE AND DIMENSIONS ARE ESTIMATED AND MAY VARY IN ACTUAL CONSTRUCTION. ACTUAL POSITION OF HOUSE ON LOT IS SUBJECT TO SURVEY. THIS PLAN AND FACT PLAN ARE NOT TO BE USED FOR ANY OTHER PURPOSE. CONCEPTS, FLOOR PLANS ARE THE COPYRIGHTED PROPERTY OF H&H HOMES. ANY USE, REPRODUCTION, ADAPTATION, OR DISPLAY OF THE PLANS IS STRICTLY PROHIBITED. © 2017 H&H HOMES. ALL RIGHTS RESERVED. FOR CURRENT DETAILS, CONTACT H&H HOMES.

H&H HOMES, INC.
 TOPSAIL

DATE: OCTOBER 13, 2017
 REV.: MARCH 30, 2020
 SCALE: 1/4" = 1'-0"
 DRAWN BY:
 ENGINEERED BY:
 REVIEWED BY:

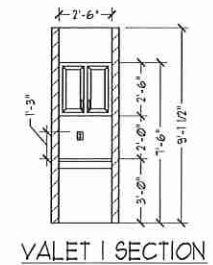
SLAB INTERFACE
 PLAN - OPTIONS
A-4.1

SQUARE FOOTAGE	
1st FLOOR:	941 SQ. FT.
2nd FLOOR:	1304 SQ. FT.
TOTAL:	2245 SQ. FT.
GARAGE:	393 SQ. FT.
FRONT PORCH (A + C ELEVATIONS):	146 SQ. FT.
FRONT PORCH (B ELEVATIONS):	145 SQ. FT.
REAR COVERED PORCH:	120 SQ. FT.
1st FLOOR OPTIONS:	
OPTIONAL FIREPLACE:	10 SQ. FT.
UNHEATED OPTIONS:	
OPT 1-CAR GARAGE:	240 SQ. FT.
OPT 11'-0" X 10'-0" PORCH:	10 SQ. FT.
OPT WRAP AROUND PORCH (ELEV. A/C):	53 SQ. FT.
OPT. WRAP AROUND PORCH (ELEV. B):	53 SQ. FT.

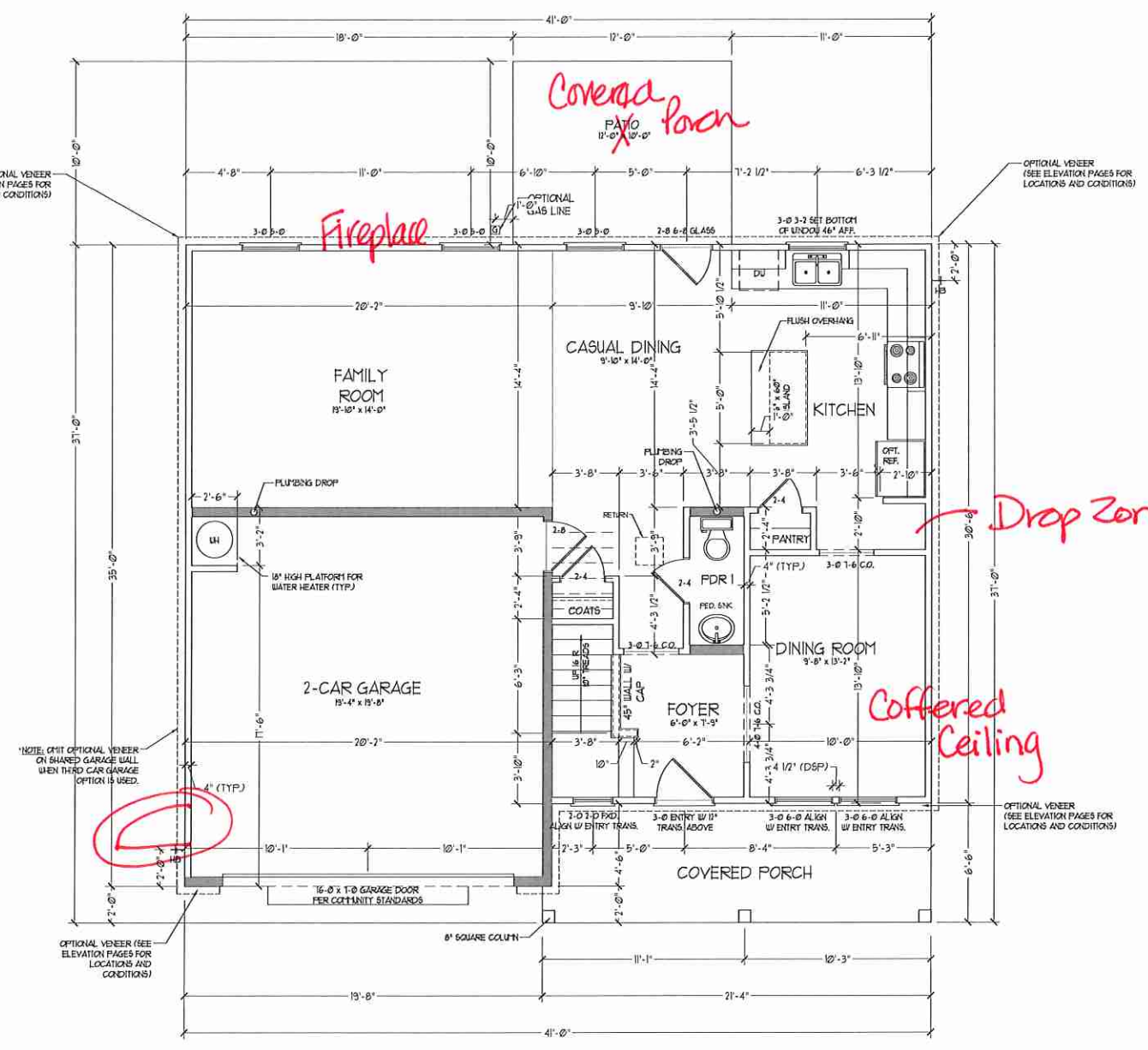
SQUARE FOOTAGE W/ FULL BRICK VENEER	
1st FLOOR:	558 SQ. FT.
2nd FLOOR:	1375 SQ. FT.
TOTAL:	1933 SQ. FT.
GARAGE:	48 SQ. FT.
FRONT PORCH (A + C ELEVATIONS):	135 SQ. FT.
FRONT PORCH (B ELEVATIONS):	145 SQ. FT.
REAR COVERED PORCH:	120 SQ. FT.
1st FLOOR OPTIONS:	
OPTIONAL FIREPLACE:	14 SQ. FT.
UNHEATED OPTIONS:	
OPT 1-CAR GARAGE:	259 SQ. FT.
OPT 11'-0" X 10'-0" PORCH:	10 SQ. FT.
OPT WRAP AROUND PORCH (ELEV. A/C):	53 SQ. FT.
OPT. WRAP AROUND PORCH (ELEV. B):	53 SQ. FT.

NOTE: ALL EXTERIOR WALLS AND ATTIC WALLS ARE TO BE 2" X 4" @ 16" O.C. (RND). ALL INTERIOR LOAD BEARING WALLS ARE TO BE 2" X 4" @ 16" O.C. (RND) AND NON-LOAD BEARING INTERIOR WALLS ARE TO BE 2" X 4" @ 24" O.C. (RND).
 2x6 WALL
 SHADDED WALLS ARE TO BE 2" X 6" @ 16" O.C. (LOAD BEARING) OR 2" X 6" @ 24" O.C. (NON-LOAD BEARING) REGARDLESS OF EXTERIOR WALL CONDITION.

PROVIDE MINIMUM INSULATION IN CEILINGS AND WALLS PER SECTION N 11021



VALET I SECTION



FIRST FLOOR PLAN (A1)

J.S. THOMPSON ENGINEERING, INC.
 606 WADE AVE., SUITE 104
 RALEIGH, NC 27605
 PHONE: (919) 788-9920
 FAX: (919) 788-9921
 N.C. LICENSE NO. C-1133



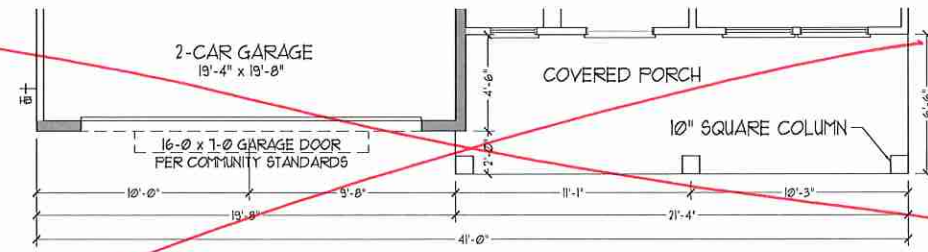
PRICES, PROMOTIONS, INCENTIVES, FEATURES, OPTIONS, FLOOR PLANS, ELEVATIONS, DESIGNATIONS, MATERIALS, FINISHES, AND DIMENSIONS WITHOUT NOTICE. SQUARE FOOTAGE AND DIMENSIONS ARE ESTIMATED AND MAY VARY IN ACTUAL CONSTRUCTION. ACTUAL POSITION OF HOUSE ON LOT IS TO BE DETERMINED BY SURVEY. ALL FLOOR PLANS AND ELEVATIONS, DRAWINGS, AND CONCEPTS OF H&H HOMES ARE THE COPYRIGHTED PROPERTY OF H&H HOMES. ANY USE, REPRODUCTION, ADAPTATION, OR DISPLAY OF THE PLANS IS STRICTLY PROHIBITED WITHOUT THE WRITTEN PERMISSION OF H&H HOMES. CURRENT DETAILS, COPYRIGHT 2017 H&H HOMES.

H&H HOMES, INC.
 TOPSAIL

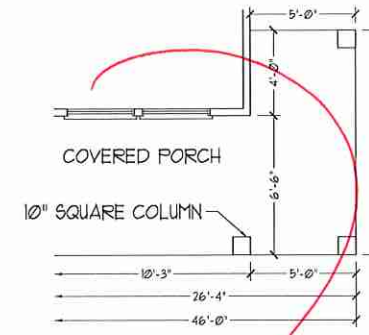
DATE: OCTOBER 13, 2017
 REV.: MARCH 30, 2020
 SCALE: 1/4" = 1'-0"
 DRAWN BY:
 ENGINEERED BY:
 REVIEWED BY:

FIRST FLOOR PLAN
 A-5

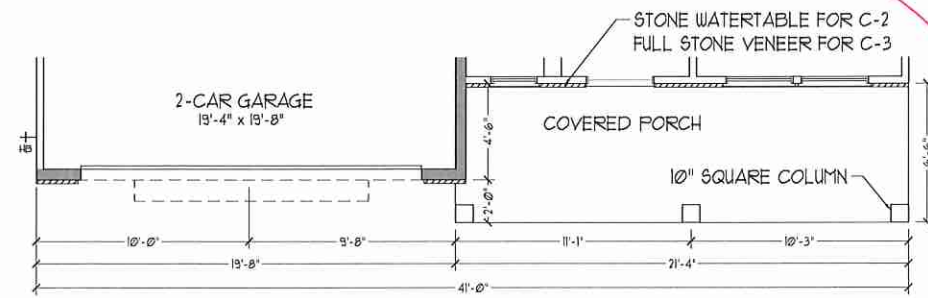
FIRST FLOOR PLAN
(C1)



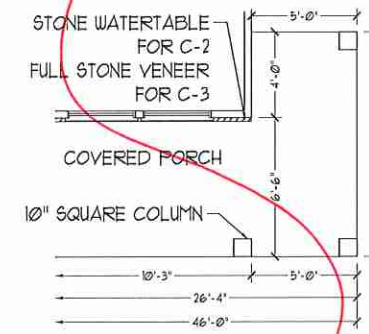
OPTIONAL WRAP
AROUND PORCH
(C1)



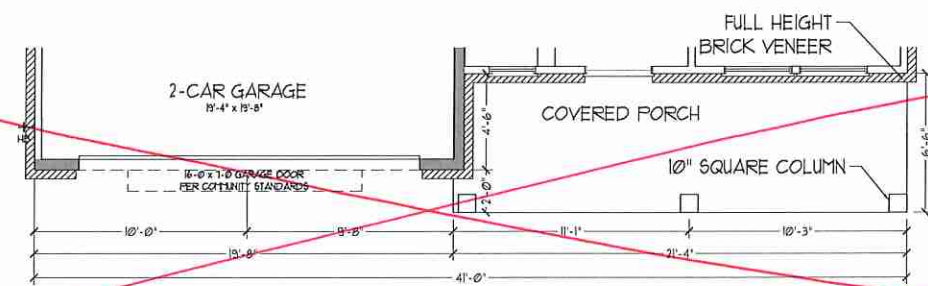
FIRST FLOOR PLAN
(C2 & C3)



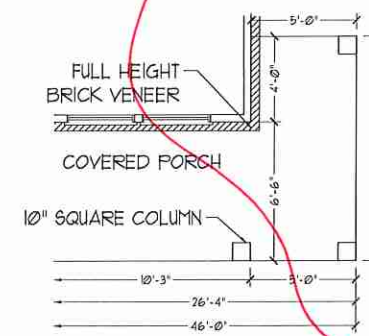
OPTIONAL WRAP
AROUND PORCH
(C2 & C3)



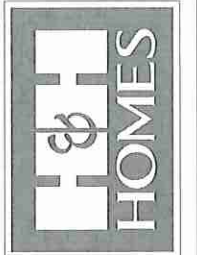
FIRST FLOOR PLAN
(C4)



OPTIONAL WRAP
AROUND PORCH
(C4)



**J.S. THOMPSON
ENGINEERING, INC.**
606 WADE AVE., SUITE 104
RALEIGH, NC 27605
PHONE: (919) 789-9222
FAX: (919) 789-9221
N.C. LICENSE NO. C-1733



PRICES, PROMOTIONS, INCENTIVES, FEATURES, OPTIONS, FLOOR PLANS, ELEVATIONS, DESIGNATIONS, FINISHES, MATERIALS, AND DIMENSIONS WITHOUT NOTICE. SQUARE FOOTAGE AND DIMENSIONS ARE ESTIMATED AND MAY VARY IN ACTUAL CONSTRUCTION. ACTUAL POSITION OF HOUSE ON LOT IS NOT GUARANTEED. THESE PARTIAL FLOOR PLANS AND ELEVATIONS ARE THE PROPERTY OF H&H HOMES, INC. AND ARE THE PROPERTY OF H&H HOMES, INC. ANY USE, REPRODUCTION, ADAPTATION, OR DISPLAY OF THESE PLANS IS STRICTLY PROHIBITED. © 2017 H&H HOMES. ALL RIGHTS RESERVED.

H&H HOMES, INC.
TOPSAIL

DATE: OCTOBER 13, 2017
REV.: MARCH 30, 2020
SCALE: 1/4"=1'-0"
DRAWN BY:
ENGINEERED BY:
REVIEWED BY:
FIRST FLOOR
PARTIAL PLANS -
"C" ELEVATIONS
A-5.4

J.S. THOMPSON
ENGINEERING, INC.
 606 WADE AVE., SUITE 104
 RALEIGH, NC 27605
 PHONE: (919) 760-9190
 FAX: (919) 789-9221
 N.C. LICENSE NO. C-1133

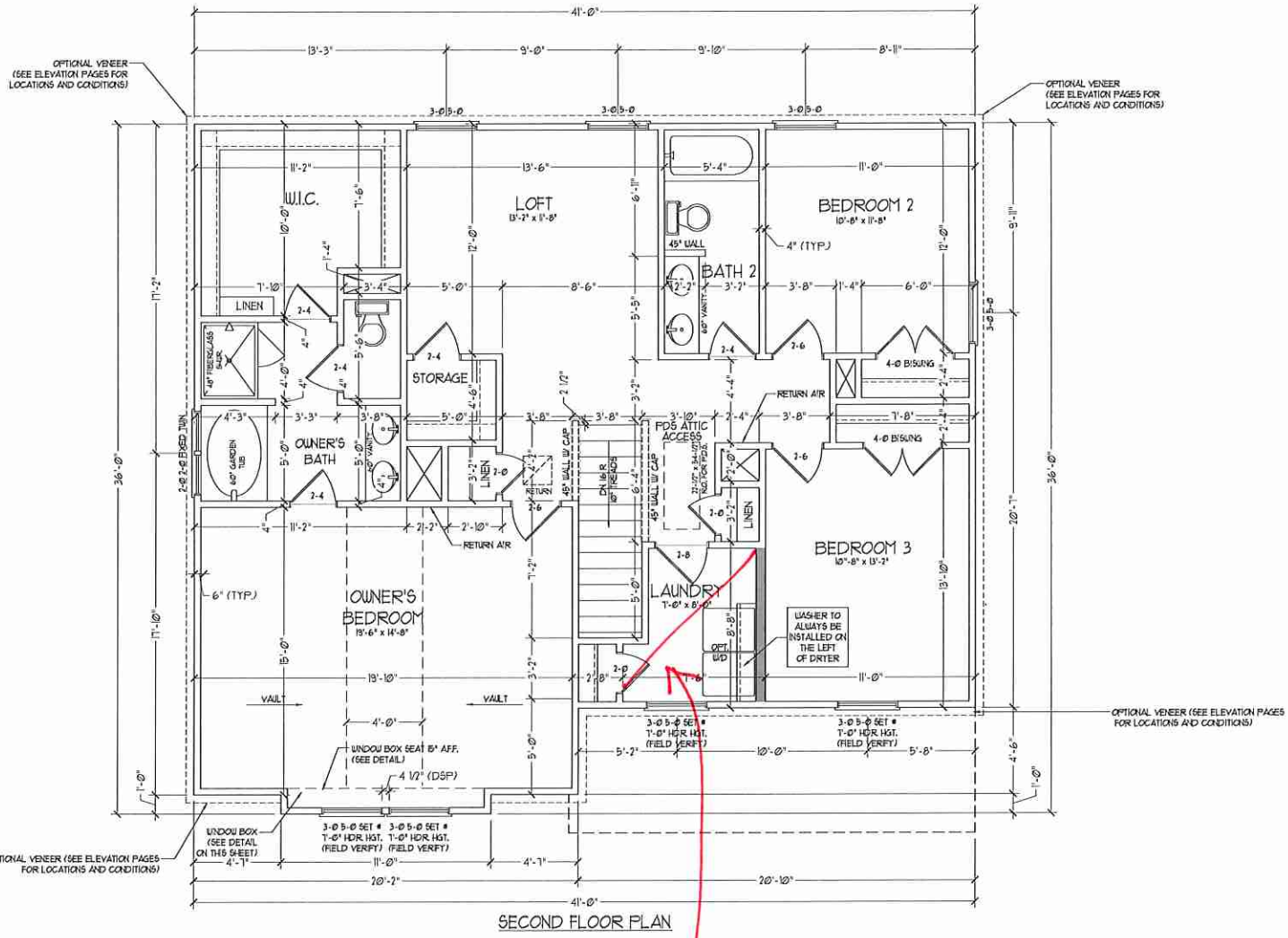


PRICES, PROMOTIONS, INCENTIVES, FEATURES, OPTIONS, FLOOR PLANS, ELEVATIONS, DESIGN, MATERIALS, FINISHES, SCHEDULES, DIMENSIONS WITHOUT NOTICE. SQUARE FOOTAGE AND DIMENSIONS ARE ESTIMATED AND MAY VARY IN ACTUAL CONSTRUCTION. ACTUAL POSITION OF HOUSE ON LOT IS NOT GUARANTEED. CONTRACTOR SHALL VERIFY ALL FLOOR PLANS AND ELEVATIONS. H&H HOMES, INC. ARTIST CONCEPTIONS. FLOOR PLANS ARE THE COPYRIGHTED PROPERTY OF H&H HOMES, INC. USE, REPRODUCTION, MODIFICATION OR DISPLAY OF ANY OF THE PLANS IS STRICTLY PROHIBITED WITHOUT THE WRITTEN PERMISSION OF H&H HOMES, INC. © 2017 H&H HOMES

H&H HOMES, INC.
 TOPSAIL

DATE: OCTOBER 13, 2017
 REV.: MARCH 30, 2020
 SCALE: 1/4"=1'-0"
 DRAWN BY:
 ENGINEERED BY:
 REVIEWED BY:

SECOND FLOOR PLAN
 A-6



SECOND FLOOR PLAN

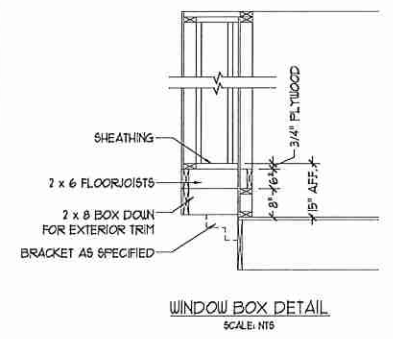
Workstation

NOTE: ALL EXTERIOR WALLS AND ATTIC WALLS ARE TO BE 2 x 4 @ 16" O.C. (UNGR.). ALL INTERIOR LOAD BEARING WALLS ARE TO BE 2 x 4 @ 16" O.C. (UNGR.) AND NON-LOAD BEARING INTERIOR WALLS ARE TO BE 2 x 4 @ 24" O.C. (UNGR.)

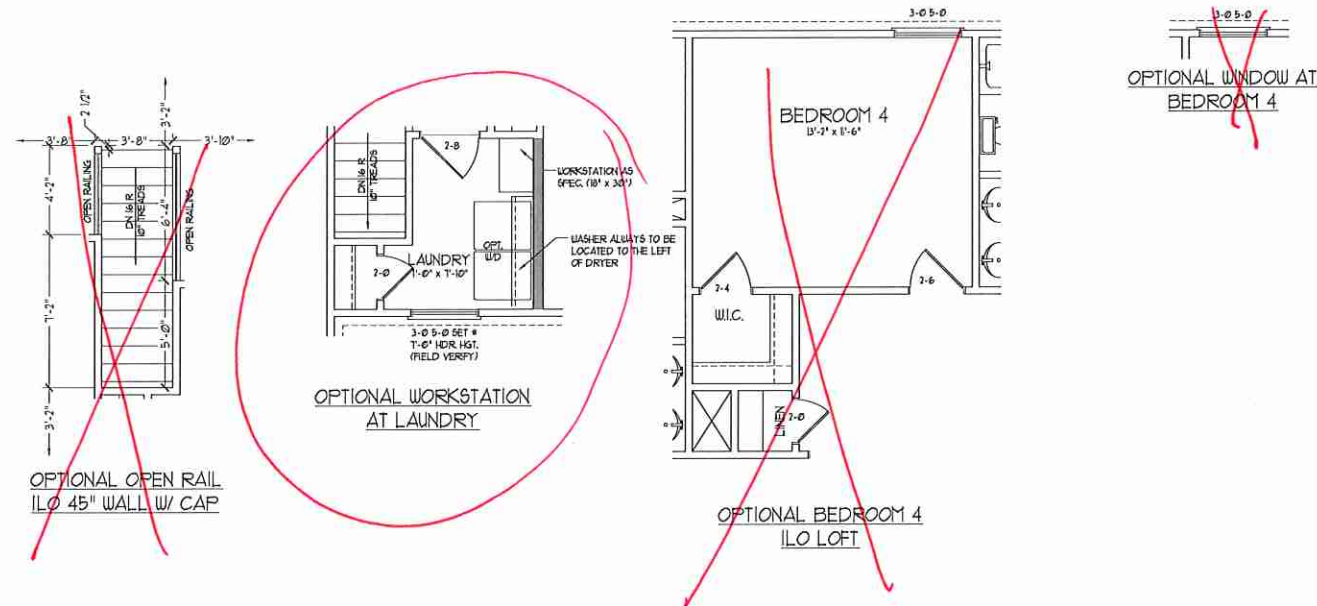
2x6 WALL

* SHADY WALLS ARE TO BE 2 x 6 @ 16" O.C. (LOAD BEARING) OR 2 x 6 @ 24" O.C. (NON-LOAD BEARING) REGARDLESS OF EXTERIOR WALL CONDITION

* PROVIDE MINIMUM INSULATION IN CEILING AND WALLS PER SECTION N 1102.1



WINDOW BOX DETAIL
 SCALE: N15



**J.S. THOMPSON
ENGINEERING, INC.**
608 WADE AVE., SUITE 104
RALEIGH, NC 27605
PHONE: (919) 286-9938
FAX: (919) 286-9921
N.C. LICENSE NO. C-1133

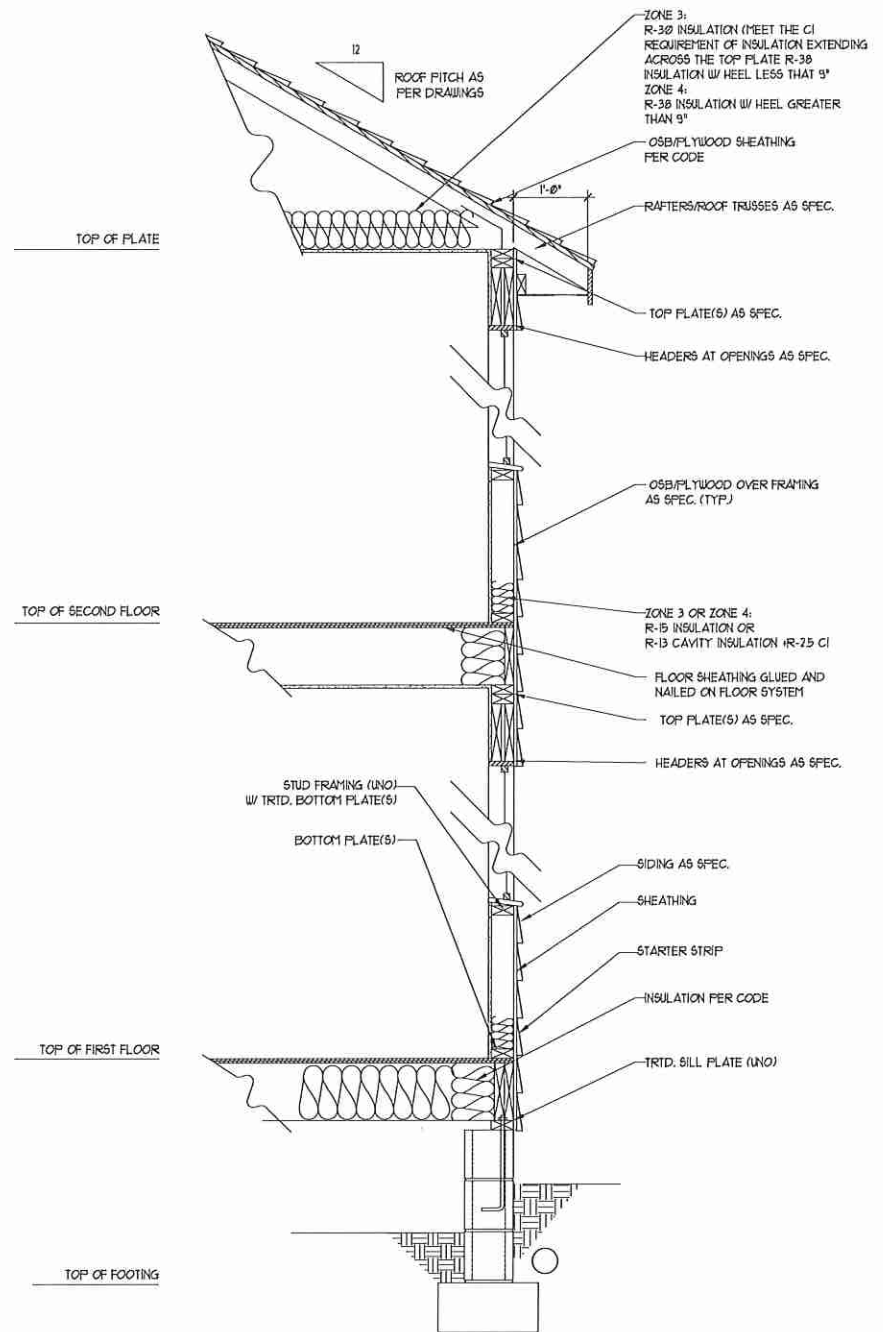


PRICES, PROMOTIONS, INCENTIVES, FEATURES,
OPTIONS, FLOOR PLANS, ELEVATIONS, DESIGNS,
AND MATERIALS LISTINGS ARE SUBJECT TO CHANGE
WITHOUT NOTICE. SQUARE FOOTAGE AND DIMENSIONS
ARE ESTIMATED AND MAY VARY IN ACTUAL
CONSTRUCTION. ACTUAL POSITION OF HOSE ON LOT
MAY VARY. ALL DIMENSIONS ARE TO FACE UNLESS
SPECIFIED OTHERWISE. DIMENSIONS ARE APPROXIMATE.
CONCEPTS, FLOOR PLANS ARE THE COPYRIGHTED
PROPERTY OF H&H HOMES. ANY USE, REPRODUCTION,
ADAPTATION, OR DISPLAY OF THE PLANS IS STRICTLY
PROHIBITED. CONTACT H&H HOMES FOR
CURRENT DETAILS. COPYRIGHT 2017 H&H HOMES

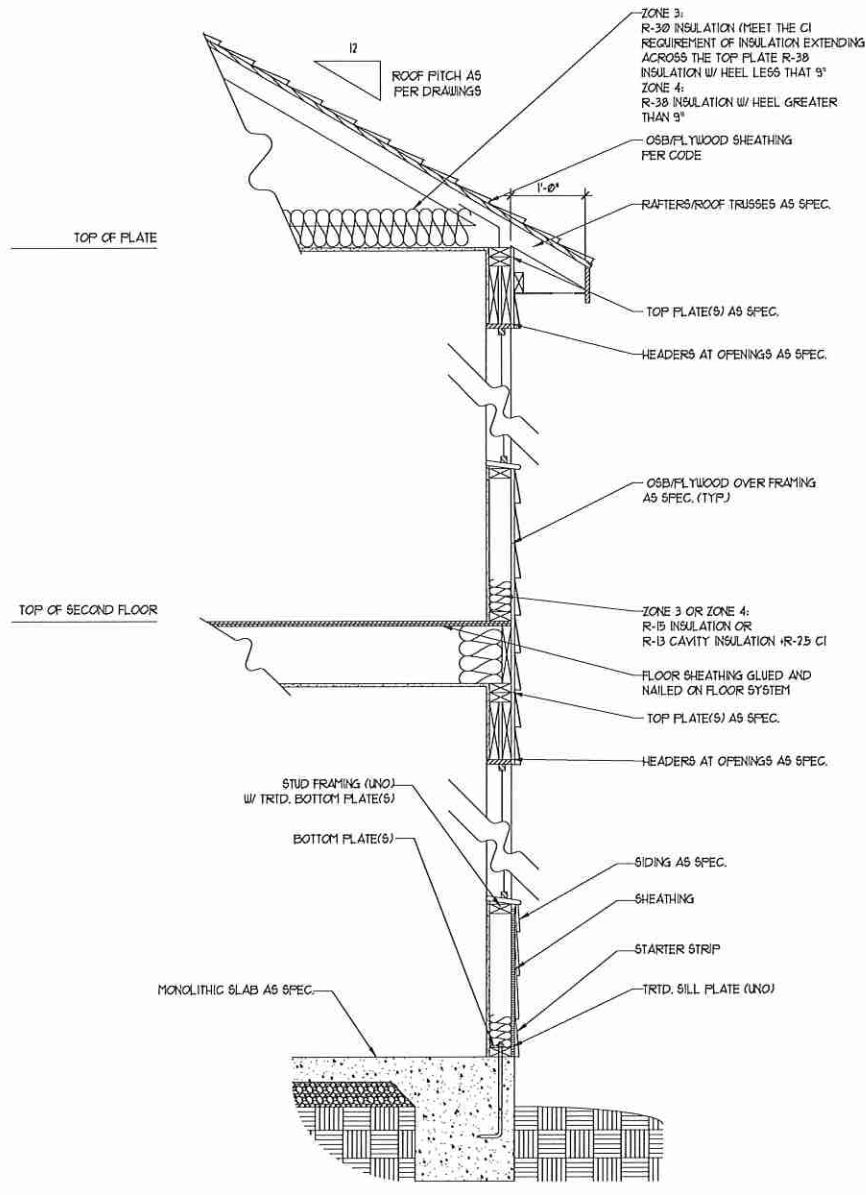
H&H HOMES, INC.
TOPSAIL

DATE: OCTOBER 13, 2017
REV.: MARCH 30, 2020
SCALE: 1/4" = 1'-0"
DRAWN BY:
ENGINEERED BY:
REVIEWED BY:

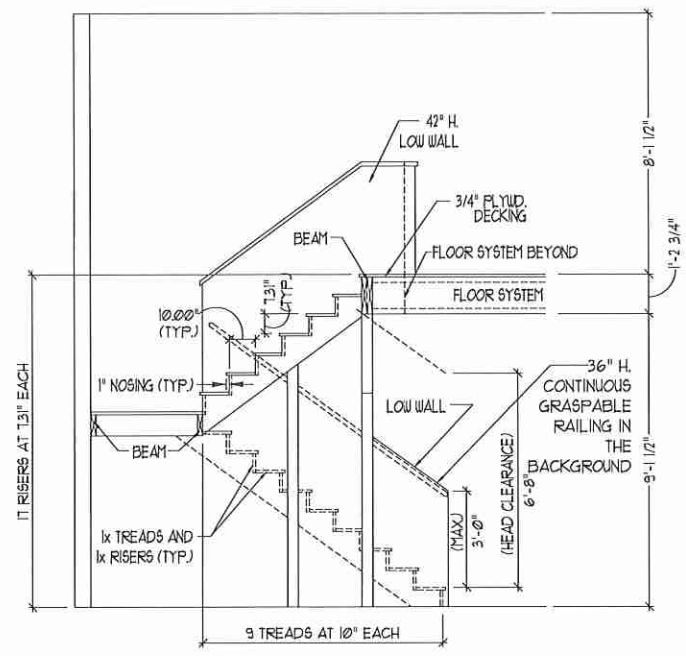
SECOND FLOOR
PLAN OPTIONS
A-6.1



WALL SECTION W/ CRAWL SPACE
W/ STD. SIDING SHOWN (NTS)



WALL SECTION W/ SLAB
W/ STD. SIDING SHOWN (NTS)



TYPICAL STAIR DETAIL
(NTS)

STAIR NOTES:

RAILING:

BALUSTERS SHALL BE SPACED SO THAT A 4" SPHERE CANNOT PASS THROUGH.

THE TRIANGULAR OPENINGS FORMED BY THE RISER, TREAD AND BOTTOM RAIL OF A GUARD AT THE OPEN SIDE OF A STAIRWAY ARE PERMITTED TO BE A SUCH A SIZE THAT A SPHERE OF 6 INCHES CANNOT PASS THROUGH.

OPENINGS FOR REQUIRED GUARDS ON THE SIDES OF STAIR TREADS SHALL NOT ALLOW A SPHERE 4 3/8 INCHES TO PASS THROUGH.

HANDRAILS:

HANDRAILS FOR STAIRWAYS SHALL BE CONTINUOUS FOR THE FULL LENGTH OF THE FLIGHT, FROM A POINT DIRECTLY ABOVE THE TOP RISER OF THE FLIGHT TO A POINT DIRECTLY ABOVE THE LOWEST RISER. HANDRAIL ENDS SHALL BE RETURNED OR SHALL TERMINATE IN NEWEL POSTS OR SAFETY TERMINALS. HANDRAILS ADJACENT TO A WALL SHALL HAVE A SPACE OF NOT LESS THAN 1-1/2 INCH BETWEEN THE WALL AND HANDRAILS.

CONTINUOUS GRASPABLE HANDRAIL MUST MEET TYPE ONE OR TYPE TWO CRITERIA

J.S. THOMPSON
ENGINEERING, INC.
600 WADE AVE., SUITE 104
RALEIGH, NC 27605
PHONE: (919) 769-9921
FAX: (919) 769-9921
N.C. LICENSE NO. C-1233



PRICES, PROMOTIONS, INCENTIVES, FEATURES, OPTIONS, FLOOR PLANS, ELEVATIONS, DESIGN, MATERIALS, FINISHES, DIMENSIONS, DIMENSIONS WITHOUT NOTICE. SQUARE FOOTAGE AND DIMENSIONS ARE ESTIMATED AND MAY VARY IN ACTUAL CONSTRUCTION. ACTUAL POSITION OF HOUSE ON LOT SHALL BE DETERMINED BY THE PLANNING DEPARTMENT. CONCEPTIONS, FLOOR PLANS ARE THE COPYRIGHTED PROPERTY OF H&H HOMES. ANY USE, REPRODUCTION, ADAPTATION OR DISPLAY OF THE PLANS IS STRICTLY PROHIBITED. © 2017 H&H HOMES

H&H HOMES, INC.
TOPSAIL

DATE: OCTOBER 13, 2017
REV.: MARCH 30, 2020
SCALE: 1/4"=1'-0"
DRAWN BY:
ENGINEERED BY:
REVIEWED BY:

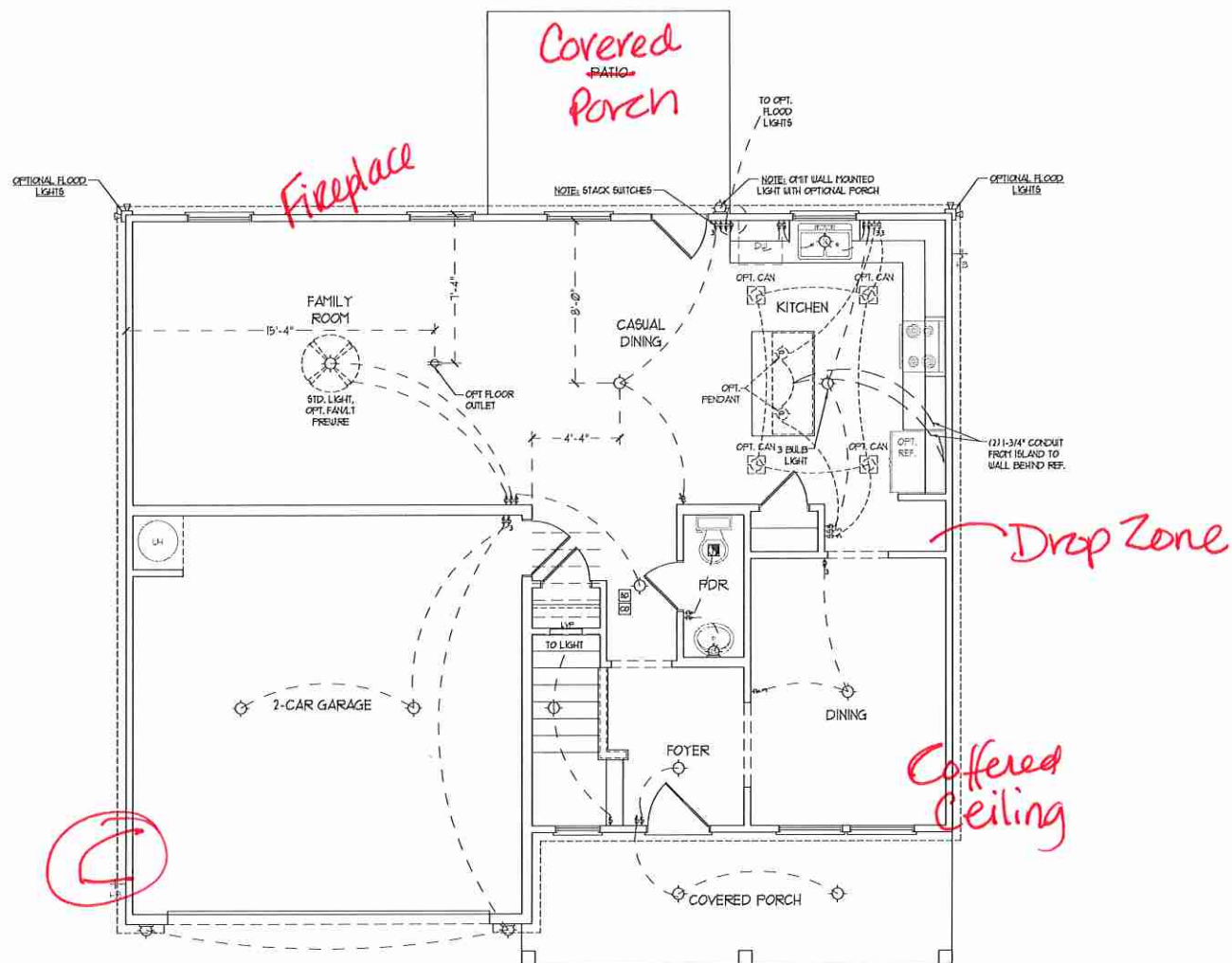
WALL SECTIONS
AND STAIR
DETAIL

AD-1

ELECTRICAL LAYOUT NOTES:

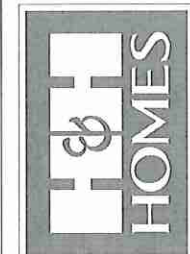
- 1) BLOCK AND WIRE FOR ALL CEILING FANS PER PLAN
- 2) VANTY LIGHTS TO BE SET # 50" AFF. (TYP)
- 3) ADDITIONAL EXTERIOR OUTLETS REQUIRED BY CODE TO BE LOCATED BY ELECTRICIAN
- 4) PLACE SWITCHES 6" MIN FROM ROUGH OPENINGS.

ELECTRICAL LEGEND	
NO V OUTLET	
WALL MOUNT LIGHT	
CEILING MOUNT LIGHT	
PENDANT LIGHT	
RECESSED CAN LIGHT	
MINI CAN LIGHT	
EYEBALL LIGHT	
FLUORESCENT LIGHT	
7 LAMP, 4' FLUORESCENT LIGHT	
FLOOD LIGHT	
SWITCH	
3-WAY SWITCH	
4-WAY SWITCH	
DIMMER SWITCH	
CONDUIT FOR COMPONENT WIRING	
SPEAKER	
DOORBELL CHIME	
NO V SMOKE DETECTOR	
CO DETECTOR	
EXHAUST FAN	
LOW VOLTAGE PANEL	
CEILING FAN	
CEILING FAN W/ LIGHT	



FIRST FLOOR PLAN

**J.S. THOMPSON
ENGINEERING, INC.**
605 WADE AVE. SUITE 104
RALEIGH, NC 27605
PHONE: (919) 286-9916
FAX: (919) 289-9921
N.C. LICENSE NO. C1733



PRICES, PROMOTIONS, INCENTIVES, FEATURES, MATERIALS, FINISHES, ELEVATIONS, DESIGNATIONS, DIMENSIONS, SQUARE FOOTAGE AND DIMENSIONS WITHOUT NOTICE. SQUARE FOOTAGE AND DIMENSIONS ARE ESTIMATED AND MAY VARY IN ACTUAL CONSTRUCTION. ACTUAL POSITION OF HOUSE ON LOT IS NOT GUARANTEED. ELEVATIONS, FINISHES, FLOOR PLANS AND ELEVATION DIMENSIONS ARE ARTIST CONCEPTIONS. FLOOR PLANS ARE THE COPYRIGHTED PROPERTY OF H&H HOMES, INC. REPRODUCTION, DISTRIBUTION, OR SALE OF THIS PLAN OR ANY PART THEREOF IS PROHIBITED. SEE NEW HOME SALES CONTRACT FOR CURRENT DETAILS. COPYRIGHT 2017 H&H HOMES.

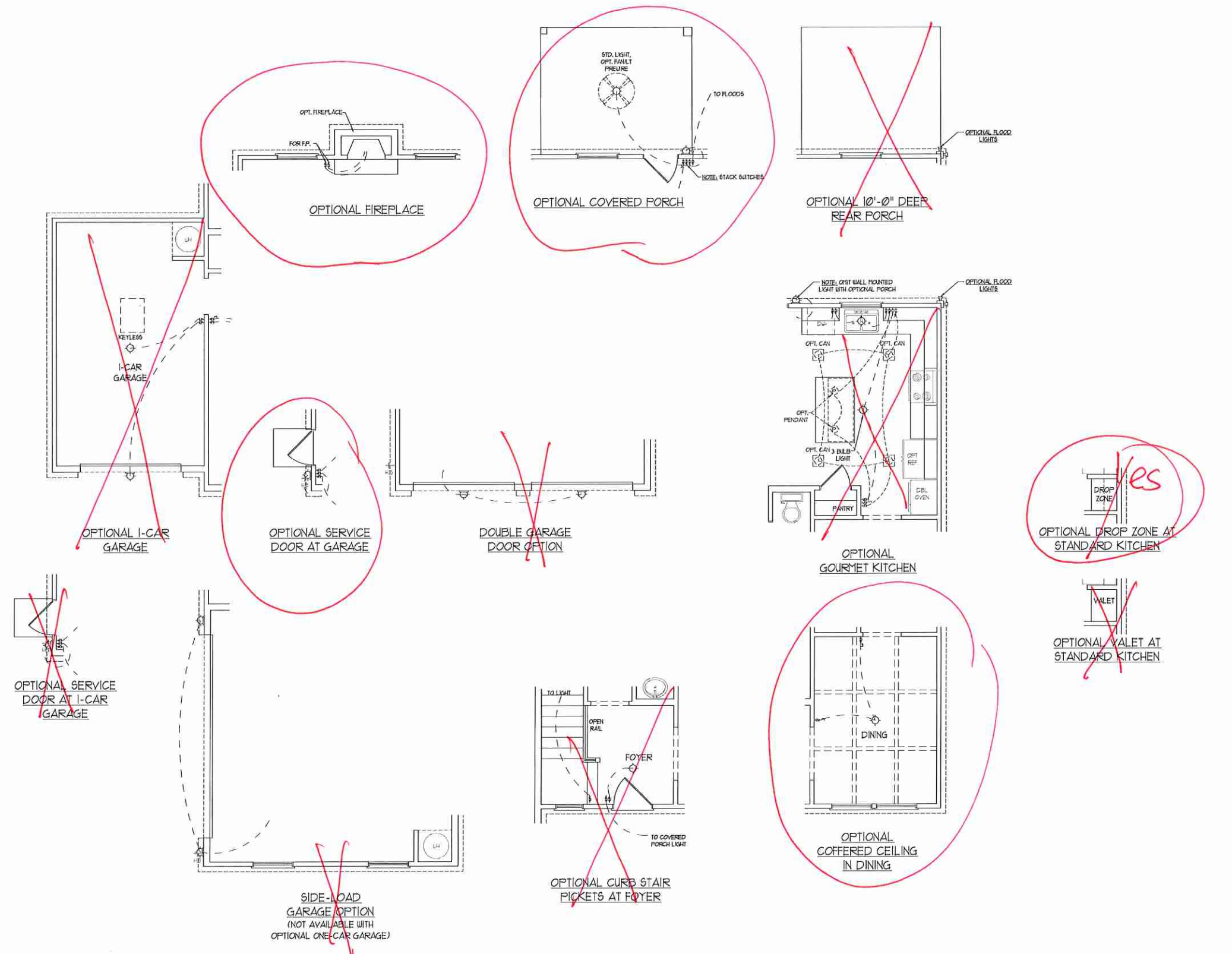
H&H HOMES, INC.
TOPSAIL

DATE: OCTOBER 13, 2017
REV.: MARCH 30, 2020
SCALE: 1/4"=1'-0"
DRAWN BY:
ENGINEERED BY:
REVIEWED BY:
FIRST FLOOR
ELECTRICAL
PLAN

ELECTRICAL LAYOUT NOTES:

- 1) BLOCK AND WIRE FOR ALL CEILING FANS PER PLAN
- 2) VANITY LIGHTS TO BE SET # 90" AFF. (TYP)
- 3) ADDITIONAL EXTERIOR OUTLETS REQUIRED BY CODE TO BE LOCATED BY ELECTRICAL
- 4) PLACE SWITCHES 6" FROM FRONT ROUGH OPENINGS.

ELECTRICAL LEGEND	
NO V OUTLET	
WALL MOUNT LIGHT	
CEILING MOUNT LIGHT	
PENDANT LIGHT	
RECESSED CAN LIGHT	
MINI CAN LIGHT	
EYEBALL LIGHT	
FLUORESCENT LIGHT	
2 LAMP, 4' FLUORESCENT LIGHT	
FLOOD LIGHT	
SWITCH	
3-WAY SWITCH	
4-WAY SWITCH	
DIMMER SWITCH	
CONDUIT FOR COMPONENT WIRING	
SPEAKER	
DOORBELL CHIME	
NO V SMOKE DETECTOR	
CO DETECTOR	
EXHAUST FAN	
LOW VOLTAGE PANEL	
CEILING FAN	
CEILING FAN W/ LIGHT	



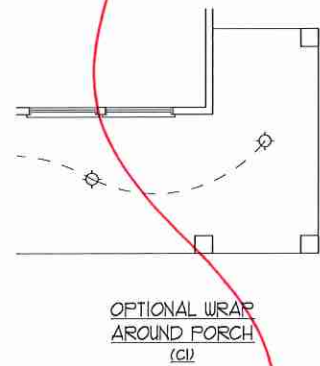
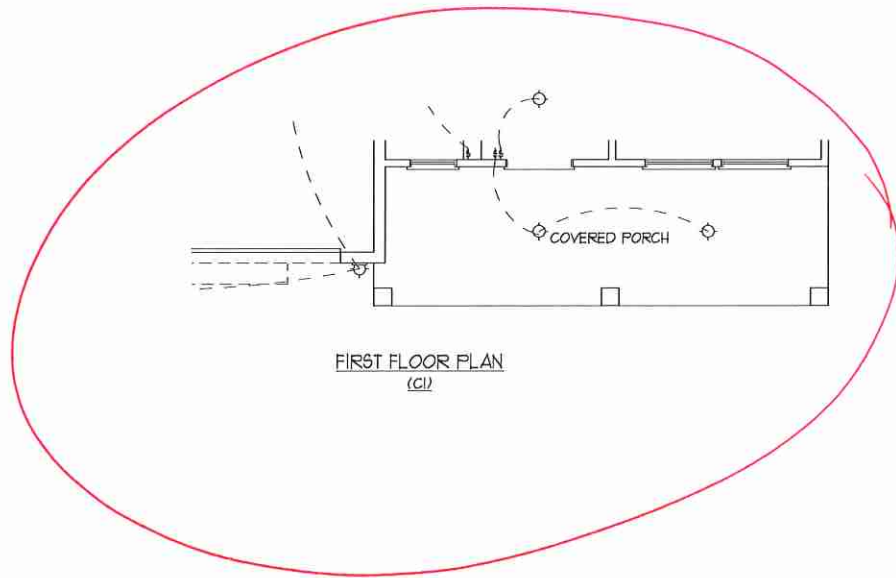
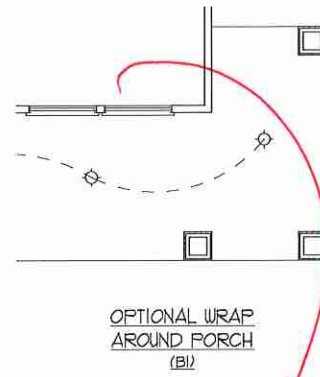
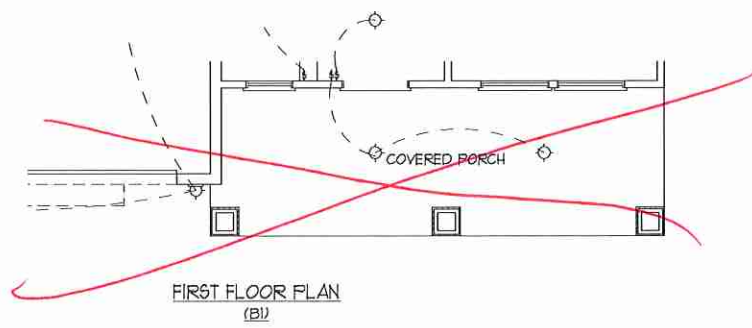
J.S. THOMPSON ENGINEERING, INC.
 650 WADE AVE., SUITE 104
 RALEIGH, NC 27605
 PHONE: (919) 789-9929
 FAX: (919) 789-9921
 N.C. LICENSE NO. C-1133



PRICES, PROMOTIONS, INCENTIVES, FEATURES, OPTIONS, FLOOR PLANS, ELEVATIONS, DESIGNATIONS, AND DIMENSIONS ARE ESTIMATED AND MAY VARY IN ACTUAL CONSTRUCTION. ACTUAL POSITION OF HOUSE ON LOT WILL BE DETERMINED BY THE SITE PLAN AND LOT PLAN. H&H HOMES, INC. IS THE SOLE PROPRIETOR OF THE CONCEPTS, FLOOR PLANS, AND THE COPYRIGHTED PROPERTY OF H&H HOMES, INC. ANY USE, REPRODUCTION, ADAPTATION, OR DISPLAY OF THE PLANS IS STRICTLY PROHIBITED WITHOUT THE WRITTEN PERMISSION OF H&H HOMES, INC. COPYRIGHT 2017 H&H HOMES

H&H HOMES, INC.
TOPSAIL

DATE: OCTOBER 13, 2017
 REV.: MARCH 30, 2020
 SCALE: 1/4" = 1'-0"
 DRAWN BY:
 ENGINEERED BY:
 REVIEWED BY:
FIRST FLOOR ELECTRICAL PLAN - OPTIONS



**J.S. THOMPSON
ENGINEERING, INC.**
600 WADE AVE., SUITE 104
RALEIGH, NC 27605
PHONE: (919) 789-9221
FAX: (919) 789-9221
N.C. LICENSE NO. C-1233

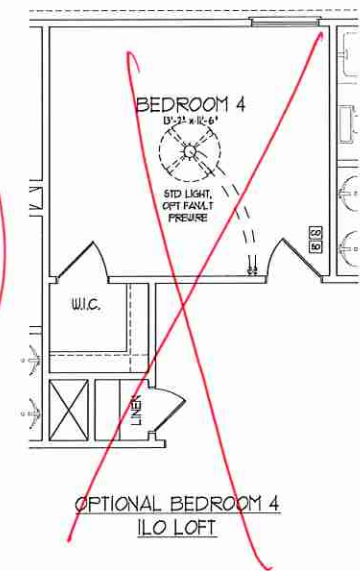
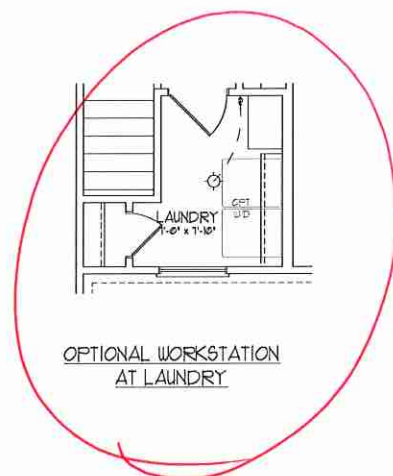
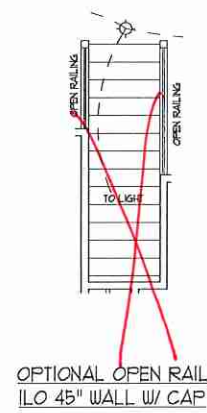


PRICES, PROMOTIONS, INCENTIVES, FEATURES, OPTIONS, FLOOR PLANS, ELEVATIONS, DESIGNATIONS, FINISHES, MATERIALS, DIMENSIONS, SQUARE FOOTAGE AND DIMENSIONS WITHOUT NOTICE, SQUARE FOOTAGE AND DIMENSIONS ARE ESTIMATED AND MAY VARY IN ACTUAL CONSTRUCTION. ACTUAL POSITION OF HOUSE ON LOT IS NOT GUARANTEED. H&H HOMES, H&H HOMES FLOOR PLANS AND ELEVATIONS, DESIGNATIONS, FINISHES, MATERIALS, DIMENSIONS, SQUARE FOOTAGE AND DIMENSIONS ARE THE PROPERTY OF H&H HOMES, INC. ANY REPRODUCTION, ADAPTATION OR DISPLAY OF THE PLANS IS STRICTLY PROHIBITED. H&H HOMES, H&H HOMES FLOOR PLANS AND ELEVATIONS ARE THE PROPERTY OF H&H HOMES, INC. FOR CURRENT DETAILS, COPYRIGHT 2017 H&H HOMES.

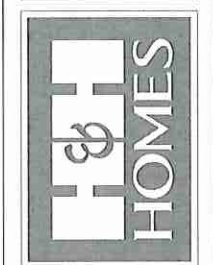
H&H HOMES, INC.
TOPSAIL

DATE: OCTOBER 13, 2017
REV.: MARCH 30, 2020
SCALE: 1/4"=1'-0"
DRAWN BY:
ENGINEERED BY:
REVIEWED BY:
FIRST FLOOR
ELECTRICAL
PARTIAL PLANS

ELECTRICAL LEGEND	
120 V OUTLET	
WALL MOUNT LIGHT	
CEILING MOUNT LIGHT	
PENDANT LIGHT	
RECESSED CAN LIGHT	
MINI CAN LIGHT	
EYEBALL LIGHT	
FLUORESCENT LIGHT	
2 LAMP, 4' FLUORESCENT LIGHT	
FLOOD LIGHT	
SWITCH	
3-WAY SWITCH	
4-WAY SWITCH	
DIMMER SWITCH	
CONDUIT FOR COMPONENT WIRING	
SPEAKER	
DOORBELL CHIME	
120 V SMOKE DETECTOR	
CO DETECTOR	
EXHAUST FAN	
LOW VOLTAGE PANEL	
CEILING FAN	
CEILING FAN W/ LIGHT	



**J.S. THOMPSON
ENGINEERING, INC**
608 WADE AVE., SUITE 104
RALEIGH, NC 27609
PHONE: (919) 284-9939
FAX: (919) 282-8921
N.C. LICENSE NO. C-1133

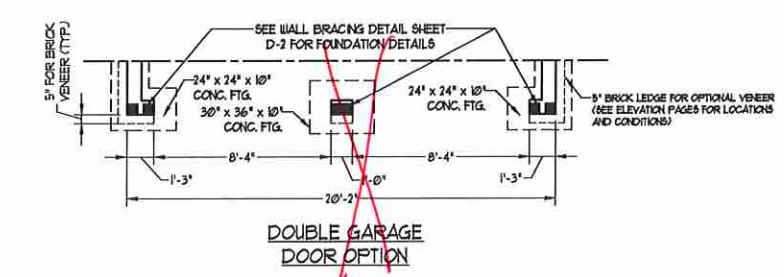
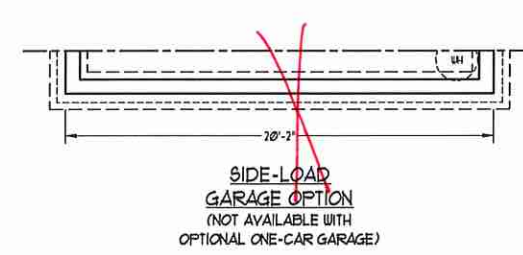
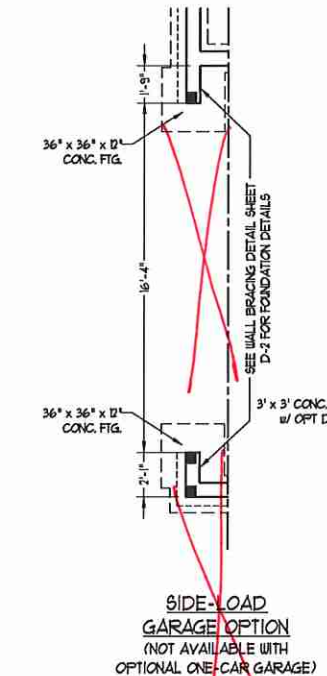
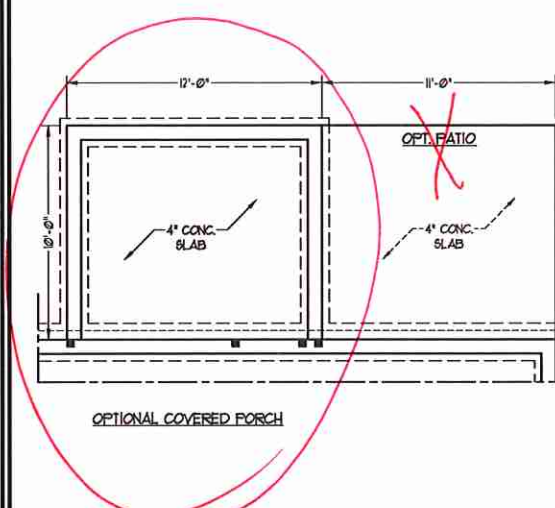
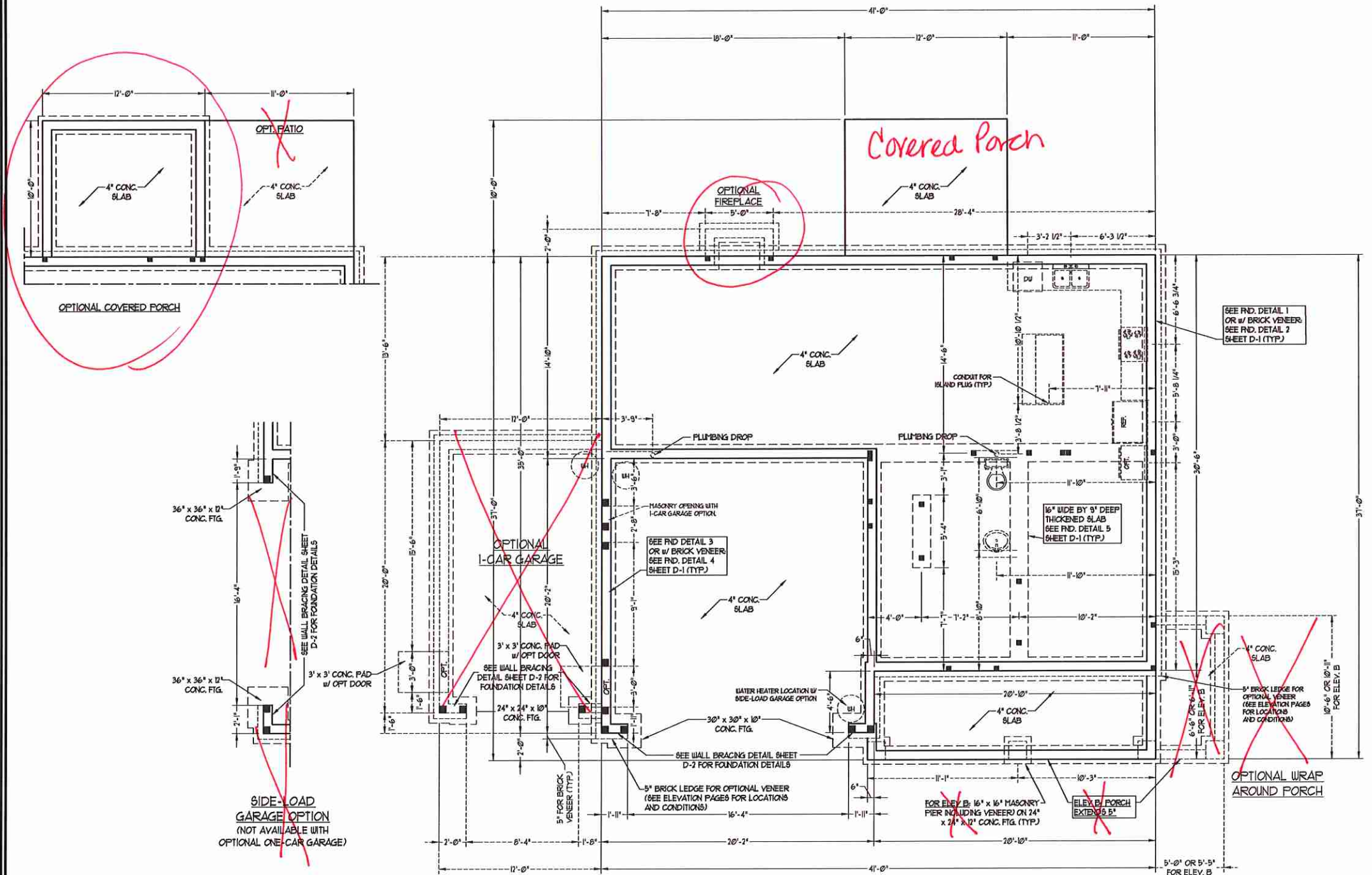


PRICES, PROMOTIONS, INCENTIVES, FEATURES, OPTIONS, FLOOR PLANS, ELEVATIONS, DESIGN, MATERIALS, FINISHES, AND DIMENSIONS ARE ESTIMATED AND MAY VARY IN ACTUAL CONSTRUCTION. ACTUAL POSITION OF HOSE ON LOT WILL BE DETERMINED BY THE PLANNING AND PLANNING DEPARTMENT. H&H HOMES, ANY USE, REPRODUCTION, ADAPTATION, OR DISPLAY OF THE PLANS IS STRICTLY PROHIBITED. © 2017 H&H HOMES. ALL RIGHTS RESERVED.

H&H HOMES, INC.
TOPSAIL

DATE: OCTOBER 13, 2017
REV.: MARCH 30, 2020
SCALE: 1/4" = 1'-0"
DRAWN BY:
ENGINEERED BY:
REVIEWED BY:
SECOND FLOOR
ELECTRICAL
PLAN OPTIONS

E-2.1



50 MPH ULTIMATE DESIGN WIND SPEED NOTES FOR LESS THAN 30' MEAN ROOF HEIGHT:

- ENGINEER'S SEAL APPLIES ONLY TO STRUCTURAL COMPONENTS. ENGINEER'S SEAL DOES NOT CERTIFY DIMENSIONAL ACCURACY OR ARCHITECTURAL LAYOUT INCLUDING ROOF SYSTEM.
- STRUCTURAL DESIGN PER NORTH CAROLINA RESIDENTIAL CODE, 2018 EDITION WITH SPECIAL CONSIDERATION TO CHAPTER 45 "HIGH WIND ZONES" FOR 50 MPH WINDS.
- BUILDER IS TO PROVIDE FRAMING CONNECTIONS AS REQUIRED BY CHAPTER 45 "HIGH WIND ZONES" FOR 50 MPH WINDS.
- FOUNDATION ANCHORAGE TO COMPLY WITH SECTION 4504 OF THE NORTH CAROLINA RESIDENTIAL CODE, 2018 EDITION.
- MEAN ROOF HEIGHT IS LESS THAN 30 FEET.
- WALL CLADDING DESIGNED FOR 0.43 PSF AND -0.31 PSF (+/- INDICATE POSITIVE / NEGATIVE PRESSURE (TYP)).
- ROOF CLADDING DESIGNED FOR 0.23 PSF AND -0.28 PSF FOR ROOF PITCHES 1/2 TO 1/3 AND 0.41 PSF AND -0.51 PSF FOR ROOF PITCHES 2/3 TO 1/2.
- 1/4\"/>

70 MPH ULTIMATE DESIGN WIND SPEED NOTES FOR LESS THAN 30' MEAN ROOF HEIGHT:

- ENGINEER'S SEAL APPLIES ONLY TO STRUCTURAL COMPONENTS. ENGINEER'S SEAL DOES NOT CERTIFY DIMENSIONAL ACCURACY OR ARCHITECTURAL LAYOUT INCLUDING ROOF SYSTEM.
- STRUCTURAL DESIGN PER NORTH CAROLINA RESIDENTIAL CODE, 2018 EDITION.
- INSTALL 1/2\"/>

J.S. THOMPSON ENGINEERING, INC.
 606 WADE AVE., SUITE 104 RALEIGH, NC 27605
 PHONE: (919) 789-9919 FAX: (919) 789-9921
 N.C. LICENSE NO.: C-1713

TOPSAIL
 H&H HOMES

DATE: NOVEMBER 7, 2020
 SCALE: 1/4" = 1'-0"
 DRAWN BY: H&H HOMES
 ENGINEERED BY: WFB



SHEET 3 of 8
 S-1c
 STEM WALL FOUNDATION PLAN

NOTE: ALL EXTERIOR WALLS AND ATTIC WALLS ARE TO BE 2 x 6 @ 16" O.C. (UNO). 2 x 4 @ 16" O.C. EXTERIOR WALLS MAY BE CONSTRUCTED IN LIEU OF 2 x 6 WALLS (UNO). ALL INTERIOR LOAD BEARING WALLS ARE TO BE 2 x 4 @ 16" O.C. (UNO) AND NON-LOAD BEARING INTERIOR WALLS ARE TO BE 2 x 4 @ 24" O.C. (UNO).

- BRACED WALL DESIGN NOTES:**
- BRACED WALL DESIGN PER SECTION R602.10 OF THE NRC 2018 EDITION.
 - CS-USP REFERS TO CONTINUOUS SHEATHING - WOOD STRUCTURAL PANELS. CONTRACTOR IS TO INSTALL 1/8" OSB ON ALL EXTERIOR WALLS ATTACHED w/ 8d NAILS SPACED 6" O.C. ALONG PANEL EDGES AND 12" O.C. IN THE FIELD.
 - GB REFERS TO GYPSUM BOARD. CONTRACTOR IS TO INSTALL 1/2" MIN GYPSUM BOARD WHERE NOTED ON THE PLANS. FASTEN GB WITH 1 1/4" SCREWS OR 1 5/8" NAILS SPACED 1" O.C. ALONG PANEL EDGES AND IN THE FIELD INCLUDING TOP AND BOTTOM FLATES.
 - BRACED WALL DESIGN APPLIED IN WIND ZONES UP TO 130 MPH. FOR HIGH WIND ZONES, BRACE WALLS ARE TO BE CONSTRUCTED IN ACCORDANCE WITH CHAPTER 45 OF THE NRC 2018 EDITION.
 - SEE NOTES AND DETAIL SHEETS FOR ADDITIONAL BRACED WALL INFORMATION.

BRACED WALL DESIGN

RECTANGLE A		RECTANGLE B	
SIDE 1A (FRONT LOAD)	SIDE 1B	SIDE 2A	SIDE 2B
METHOD: CS-USP/FF/GB	METHOD: CS-USP/FF	METHOD: CS-USP/FF	METHOD: CS-USP/FF
TOTAL REQUIRED LENGTH: 51'	TOTAL REQUIRED LENGTH: 456'	TOTAL REQUIRED LENGTH: 51'	TOTAL REQUIRED LENGTH: 456'
TOTAL PROVIDED LENGTH: 716'	TOTAL PROVIDED LENGTH: 6'	TOTAL PROVIDED LENGTH: 2066'	TOTAL PROVIDED LENGTH: 12'
SIDE 3A (SIDE LOAD)	SIDE 3B	SIDE 4A	SIDE 4B/A CUMULATIVE
METHOD: CS-USP/FF/GB	METHOD: CS-USP	METHOD: CS-USP/FF/GB	METHOD: CS-USP/FF/GB
TOTAL REQUIRED LENGTH: 1155'	TOTAL REQUIRED LENGTH: 315'	TOTAL REQUIRED LENGTH: 1155'	TOTAL REQUIRED LENGTH: 7014'
TOTAL PROVIDED LENGTH: 2012'	TOTAL PROVIDED LENGTH: 1558'	TOTAL PROVIDED LENGTH: 2012'	TOTAL PROVIDED LENGTH: 3145'

TABLE R602.15
MINIMUM NUMBER OF FULL HEIGHT STUDS AT EACH END OF HEADERS IN EXTERIOR WALLS

HEADER SPAN (FEET)	MAXIMUM STUD SPACING (INCHES) (PER TABLE R602.15)	
	16"	24"
UP TO 3'	1	1
4'	2	1
6'	3	2
12'	5	3
16'	6	4

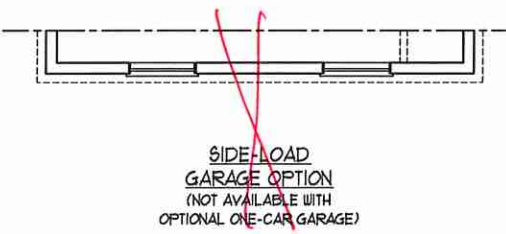
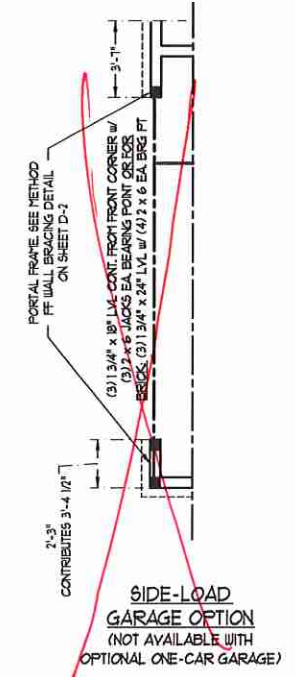
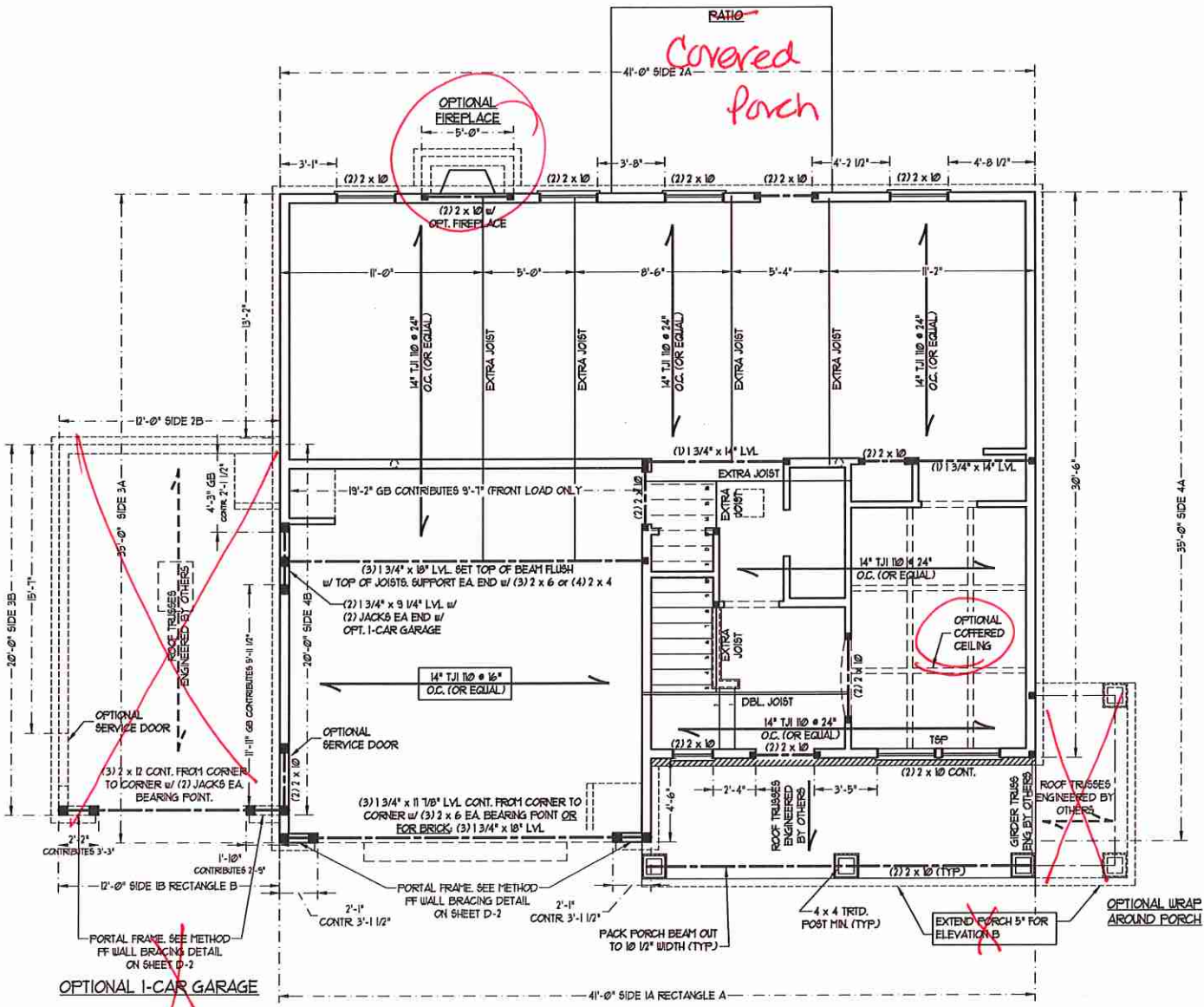
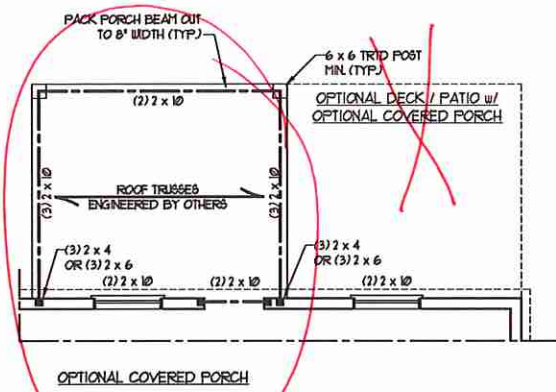
- STRUCTURAL NOTES:**
- ALL FRAMING LUMBER TO BE 6PF #2 (UNO). ALL TREATED LUMBER TO BE 6YP #2 (UNO).
 - ALL LOAD BEARING HEADERS TO BE (2) 2 x 6 (UNO).
 - INSTALL AN EXTRA JOIST UNDER WALLS PARALLEL TO FLOOR JOISTS WHERE NOTED ON THE PLANS. WINDOW AND DOOR HEADERS TO BE SUPPORTED w/ (1) JACK STUD AND (1) KING STUD EA END (UNO). SEE TABLE R602.15 FOR ADDITIONAL KING STUD REQUIREMENTS.
 - SQUARES DENOTE POINT LOADS WHICH REQUIRE SOLID BLOCKING TO GIRDER OR FOUNDATION. ALL SQUARES TO BE (2) STUDS (UNO).
 - FOR HIGH WIND ZONES, ALL EXTERIOR WALLS TO BE SHEATHED WITH 1/8" OSB SHEATHING WITH JOISTS BLOCKED AND SECURED WITH 8d NAILS AT 3" O.C. ALONG EDGES AND 6" O.C. IN THE FIELD.
 - FOR HIGH WIND ZONES, SECURE ALL EXTERIOR WALL SHEATHING PANELS TO DOUBLE TOP FLATES, BANDS, JOISTS, AND GIRDERS WITH (2) ROWS OF 8d NAILS STAGGERED AT 3" O.C. PANELS SHALL EXTEND 12" BEYOND CONSTRUCTION JOINTS AND SHALL OVERLAP GIRDERS AND DOUBLE GILL FLATES THEIR FULL DEPTH.
 - ALL 4 x 4 POSTS SHALL BE ANCHORED TO SLABS w/ SIMPSON ANCHOR POST BASES (OR EQUAL) AND 6 x 6 POSTS w/ ANCHOR POST BASES (OR EQUAL) (UNO). ALL 4 x 4 AND 6 x 6 POSTS TO BE INSTALLED WITH 100% LB CAPACITY UPLIFT CONNECTORS AT TOP (UNO).
 - FOR FIBERGLASS, ALUMINUM OR COLUMN ENG BY OTHERS, SECURE TO SLAB w/ (2) METAL ANGLES USING 2" CONC. SCREWS. FASTEN ANGLES TO COLUMNS w/ 1/4" THROUGH BOLTS w/ NUTS AND WASHERS. LOCATE ANGLES ON OPPOSITE SIDES OF COLUMN. THROUGH BOLTS MUST BE INSTALLED PRIOR TO SETTING COLUMN.
 - REFER TO NOTES AND DETAIL SHEETS FOR ADDITIONAL STRUCTURAL INFORMATION.

NOTE:
BCI 4500A-18 I-JOISTS MAY BE USED IN LIEU OF TJI 100 I-JOISTS AT THE DEPTH AND SPACING NOTED ON THE PLAN.

LINTEL SCHEDULE FOR BRICK/NATURAL STONE SUPPORT

LENGTH (FT.)	SIZE OF LINTEL
UP TO 4 FT.	L 3 1/2 x 3 1/2 x 1/4
4-8	L 5 x 3 1/2 x 5/16 LLY
8 AND GREATER	L 6 x 4 x 5/16 LLY

- BRICK SUPPORT NOTES:**
- LINTEL SCHEDULE APPLIES TO ALL OPENINGS IN BRICK VENEER (UNO). SEE ARCH DUGS FOR SIZE AND LOCATION OF OPENINGS.
 - (LLV) = LONG LEG VERTICAL.
 - LENGTH = CLEAR OPENING.
 - EMBED ALL ANGLE IRONS MIN. 4" EACH SIDE INTO VENEER TO PROVIDE BEARING.
 - FOR ALL HEADERS 8'-0" AND GREATER IN LENGTH, ATTACH STEEL ANGLE TO HEADER w/ 1/2" LAG SCREWS @ 12" O.C. STAGGERED.
 - FOR ALL BRICK SUPPORT # ROOF LINES, FASTEN (2) 2 x 10 BLOCKING BETWEEN STUDS w/ (4) 10d NAILS PER FLY. FASTEN A 6" x 4" x 5/16" STEEL ANGLE TO (2) 2 x 10 BLOCKING w/ (2) 1/2" LAG SCREWS @ 12" O.C. STAGGERED. SEE SECTION R103.2(2) OF THE 2018 NRC FOR ADDITIONAL BRICK SUPPORT INFORMATION.
 - PRECAST REINFORCED CONCRETE LINTELS ENGINEERED BY OTHERS MAY BE USED IN LIEU OF STEEL LINTELS.



J.S. THOMPSON ENGINEERING, INC.
606 WADE AVE, SUITE 104 - RALEIGH, NC 27605
PHONE: (919) 789-9919 FAX: (919) 789-9921
N.C. LICENSE NO.: C-1173

TOPSAIL
H&H HOMES

DATE: NOVEMBER 2, 2020
SCALE: 1/4" = 1'-0"
DRAWN BY: H&H HOMES
ENGINEERED BY: WFB

SHEET 4 OF 8
S-2
SECOND FLOOR FRAMING PLAN

Professional Engineer Seal for Matthew G. Strother, No. 33738, State of North Carolina, dated 11/2/2020.

NOTE: ALL EXTERIOR WALLS AND ATTIC WALLS ARE TO BE 2 x 6 @ 16" O.C. (UNO). 2 x 4 @ 16" O.C. EXTERIOR WALLS MAY BE CONSTRUCTED IN LIEU OF 2 x 6 WALLS (UNO). ALL INTERIOR LOAD BEARING WALLS ARE TO BE 2 x 4 @ 16" O.C. (UNO) AND NON-LOAD BEARING INTERIOR WALLS ARE TO BE 2 x 4 @ 24" O.C. (UNO).

- BRACED WALL DESIGN NOTES:**
- BRACED WALL DESIGN PER SECTION R6-02.10 OF THE NRC 2018 EDITION.
 - CS-USP REFERS TO "CONTINUOUS SHEATHING - WOOD STRUCTURAL PANELS" CONTRACTOR IS TO INSTALL 1/2" OSB ON ALL EXTERIOR WALLS ATTACHED w/ 8d NAILS SPACED 6" O.C. ALONG PANEL EDGES AND 12" O.C. IN THE FIELD.
 - GB REFERS TO "GYPSUM BOARD" CONTRACTOR IS TO INSTALL 1/2" (MIN) GYPSUM WALL BOARD WHERE NOTED ON THE PLANS. FASTEN GB WITH 1 1/4" SCREWS OR 1 5/8" NAILS SPACED 1" O.C. ALONG PANEL EDGES AND IN THE FIELD INCLUDING TOP AND BOTTOM FLATES.
 - BRACED WALL DESIGN APPLIED IN WIND ZONES UP TO 130 MPH. FOR HIGH WIND ZONES, BRACE WALLS ARE TO BE CONSTRUCTED IN ACCORDANCE WITH CHAPTER 45 OF THE NRC 2018 EDITION.
 - SEE NOTES AND DETAIL SHEETS FOR ADDITIONAL BRACED WALL INFORMATION.

- NOTE:**
- PER SECTION R6-02.10.32 OF THE 2018 NRC, THE AMOUNT OF BRACING ON THE SECOND FLOOR EXCEEDS THE AMOUNT REQUIRED FOR THE FIRST FLOOR AND NO BRACED WALL ANALYSIS IS REQUIRED.
 - SHEATH ALL EXTERIOR WALLS WITH 1/2" OSB SHEATHING ATTACHED WITH 8d NAILS AT 6" O.C. ALONG PANEL EDGES AND 12" O.C. IN THE FIELD.

LINTEL SCHEDULE FOR BRICK/NATURAL STONE SUPPORT

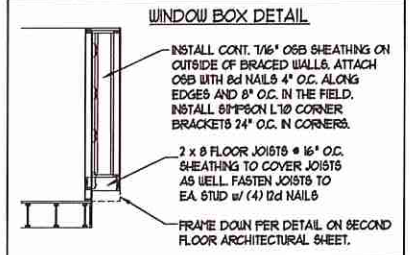
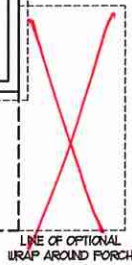
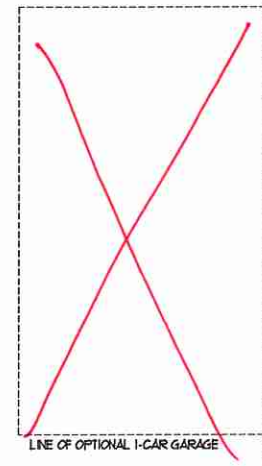
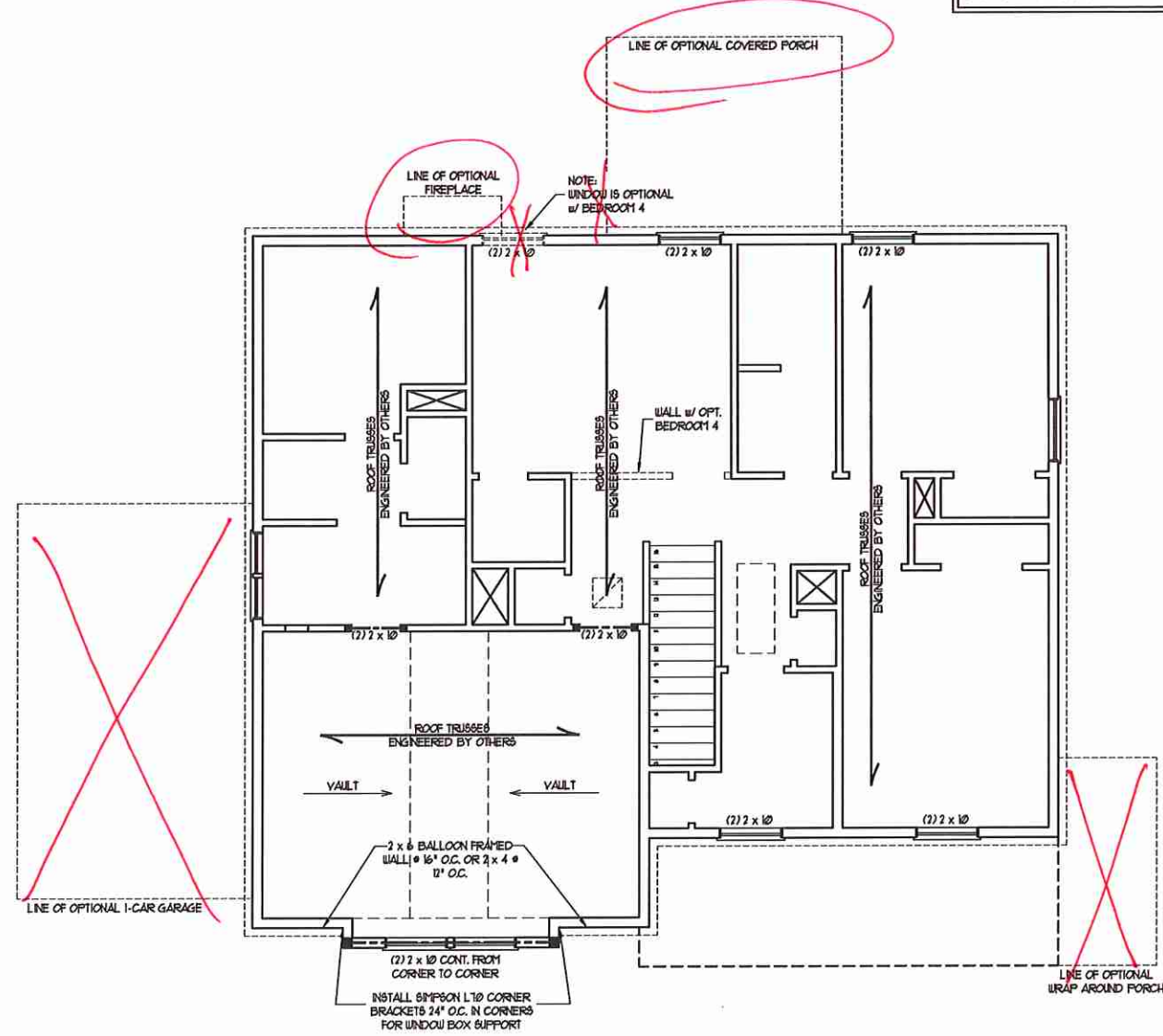
LENGTH (FT.)	SIZE OF LINTEL
UP TO 4 FT.	L 3 1/2 x 3 1/2 x 1/4
4-8	L 5 x 3 1/2 x 5/16 LLY
8 AND GREATER	L 6 x 4 x 5/16 LLY

- BRICK SUPPORT NOTES:**
- LINTEL SCHEDULE APPLIES TO ALL OPENINGS IN BRICK VENEER (UNO) SEE ARCH DWS. FOR SIZE AND LOCATION OF OPENINGS.
 - (LLV) = LONG LEG VERTICAL
 - LENGTH = CLEAR OPENING
 - SPREAD ALL ANGLE IRONS MIN. 4" EACH SIDE INTO VENEER TO PROVIDE BEARING
 - FOR ALL HEADERS 8"-8" AND GREATER IN LENGTH ATTACH STEEL ANGLE TO HEADER W/ 1/2" LAG SCREWS @ 12" O.C. STAGGERED.
 - FOR ALL BRICK SUPPORT @ ROOF LINES, FASTEN (2) 2 x 10 BLOCKING BETWEEN STUDS w/ (4) 10d NAILS PER PLY. FASTEN A 6" x 4" x 5/16" STEEL ANGLE TO (2) 2 x 10 BLOCKING w/ (2) 1/2" LAG SCREWS @ 12" O.C. STAGGERED. SEE SECTION R103.821 OF THE 2018 NRC FOR ADDITIONAL BRICK SUPPORT INFORMATION.
 - PRECAST REINFORCED CONCRETE LINTELS ENGINEERED BY OTHERS MAY BE USED IN LIEU OF STEEL LINTELS.

**TABLE R6-02.15
MINIMUM NUMBER OF FULL HEIGHT STUDS AT EACH END OF HEADERS IN EXTERIOR WALLS**

HEADER SPAN (FEET)	MAXIMUM STUD SPACING (INCHES) (PER TABLE R6-02.15)	
	16	24
UP TO 3'	1	1
4'	2	1
8'	3	2
12'	5	3
16'	6	4

- STRUCTURAL NOTES:**
- ALL FRAMING LUMBER TO BE SYP #2 (UNO).
 - ALL TREATED LUMBER TO BE SYP #2 (UNO).
 - ALL LOAD BEARING HEADERS TO BE (2) 2 x 6 (UNO).
 - WINDOW AND DOOR HEADERS TO BE SUPPORTED w/ (1) JACK STUD AND (1) KING STUD EA. END (UNO). SEE TABLE R6-02.15 FOR ADDITIONAL KING STUD REQUIREMENTS.
 - SQUARES DENOTE POINT LOADS WHICH REQUIRE SOLID BLOCKING TO GIRDER OR FOUNDATION. ALL SQUARES TO BE (2) STUDS (UNO).
 - FOR HIGH WIND ZONES, ALL EXTERIOR WALLS TO BE SHEATHED WITH 1/2" OSB SHEATHING WITH JOINTS BLOCKED AND SECURED WITH 8d NAILS AT 3" O.C. ALONG EDGES AND 6" O.C. IN THE FIELD.
 - FOR HIGH WIND ZONES, SECURE ALL EXTERIOR WALL SHEATHING PANELS TO DOUBLE TOP PLATES, BANDS, JOISTS, AND GIRDERS WITH (2) ROWS OF 8d NAILS STAGGERED AT 3" O.C. PANELS SHALL EXTEND 12" BEYOND CONSTRUCTION JOINTS AND SHALL OVERLAP GIRDERS AND DOUBLE SILL PLATES THEIR FULL DEPTH.
 - REFER TO NOTES AND DETAIL SHEETS FOR ADDITIONAL STRUCTURAL INFORMATION.

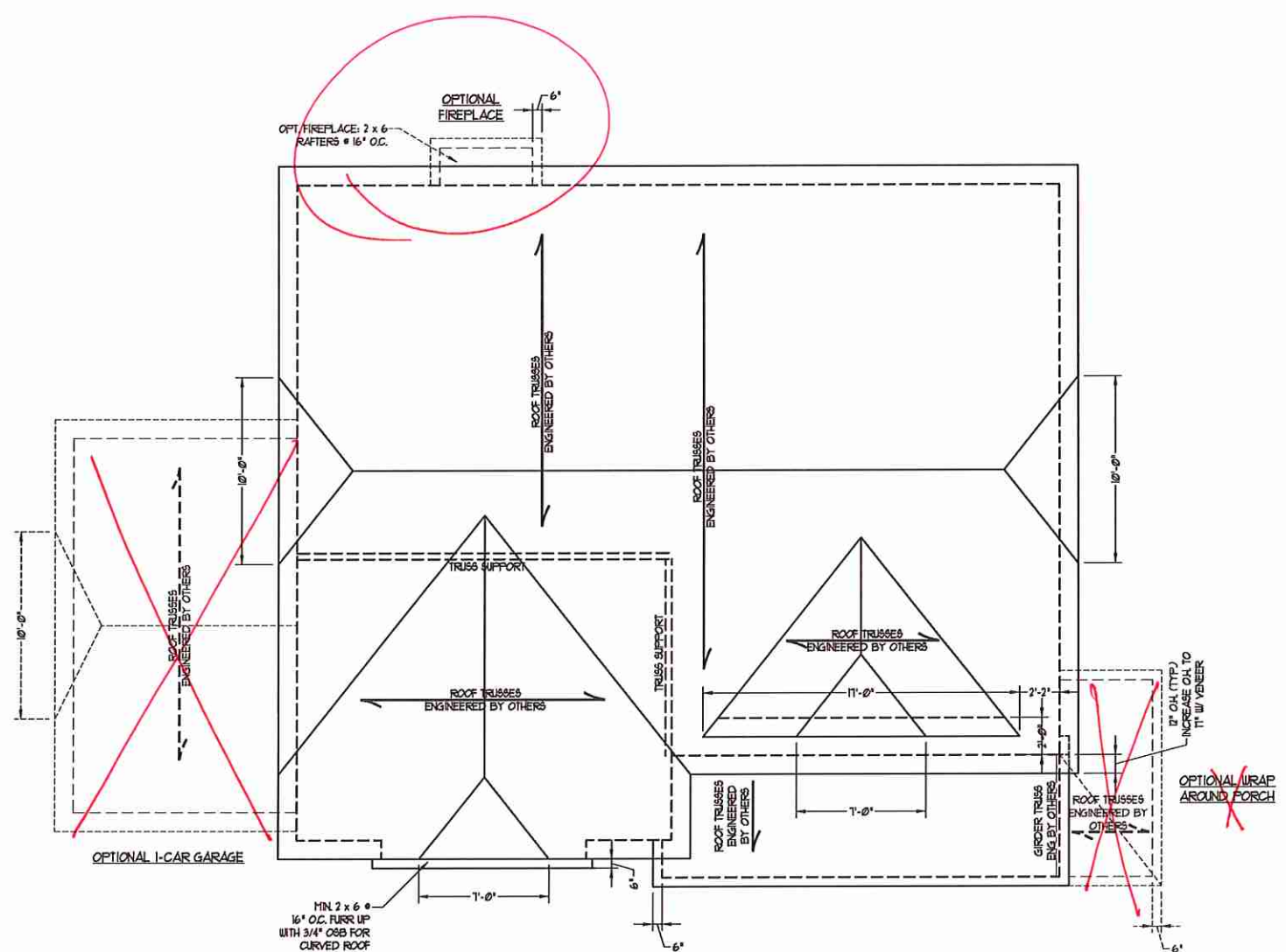
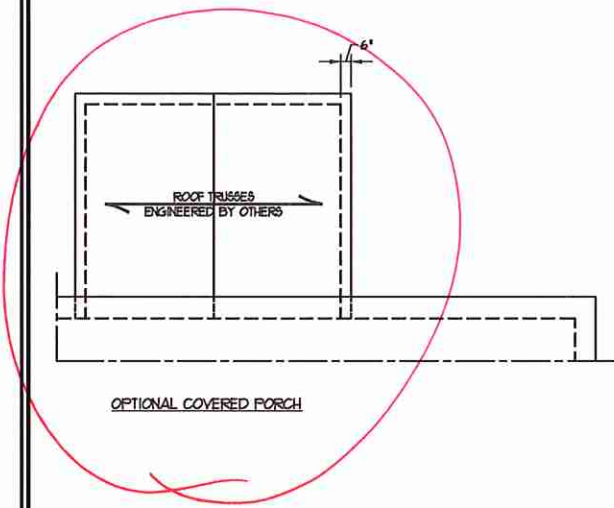


J.S. THOMPSON ENGINEERING, INC.
 606 WADE AVE., SUITE 104 RALEIGH, NC 27605
 PHONE: (919) 789-9919 FAX: (919) 789-9921
 N.C. LICENSE NO.: C-1713

TOPSAIL
 H&H HOMES

DATE: NOVEMBER 2, 2020
 SCALE: 1/4" = 1'-0"
 DRAWN BY: H&H HOMES
 ENGINEERED BY: WFB

SHEET 5 OF 8
 S-3
 ATTIC FLOOR FRAMING PLAN



ELEVATION C

- STRUCTURAL NOTES:**
1. ALL FRAMING LUMBER TO BE #2 SFF (NO).
 2. CIRCLES DENOTE (3) 2 x 4 POSTS FOR ROOF SUPPORT.
 3. FRAME DORMER WALLS ON TOP OF DOUBLE OR TRIPLE RAFTERS.
 4. HIP SPLICES ARE TO BE SPACED A MIN. OF 8'-0". FASTEN RAFTERS WITH THREE ROWS OF 10d NAILS @ 16" O.C. (TYP).
 5. STICK FRAME OVER-FRAMED ROOF SECTIONS W/ 2 x 8 RIDGES, 2 x 6 RAFTERS @ 16" O.C. AND FLAT 2 x 10 VALLEYS OR USE VALLEY TRUSSES.
 6. FASTEN FLAT VALLEYS TO RAFTERS OR TRUSSES WITH SIMPSON H25A HURRICANE TIES @ 32" O.C. MAX. PASS HURRICANE TIES THROUGH NOTCH IN ROOF SHEATHING. EACH RAFTER IS TO BE FASTENED TO THE FLAT VALLEY WITH A MIN. OF (6) 10d TOE NAILS.
 7. REFER TO SECTION R802.11 OF THE 2018 NRC FOR REQUIRED UPLIFT RESISTANCE AT RAFTERS AND TRUSSES.
 8. REFER TO NOTES AND DETAIL SHEETS FOR ADDITIONAL STRUCTURAL INFORMATION.

- BRICK SUPPORT NOTE:**
1. FASTEN (2) 2 x 10 BLOCKING BETWEEN WALL STUDS w/ (4) 10d NAILS PER FLY. FASTEN A 6" x 4" x 5/16" STEEL ANGLE TO (2) 2 x 10 BLOCKING w/ (2) 1/2" LAG SCREWS @ 12" O.C. STAGGERED. SEE SECTION R103.8.2.1 OF THE 2018 NRC FOR ADDITIONAL BRICK SUPPORT INFORMATION.
 2. WHERE ROOF SLOPES EXCEED 1:10, INSTALL 3" x 3" x 1/4" STEEL PLATE STOPS AT 24" O.C. PER SECTION R103.8.2.1 OF THE NORTH CAROLINA RESIDENTIAL CODE, 2018 EDITION.



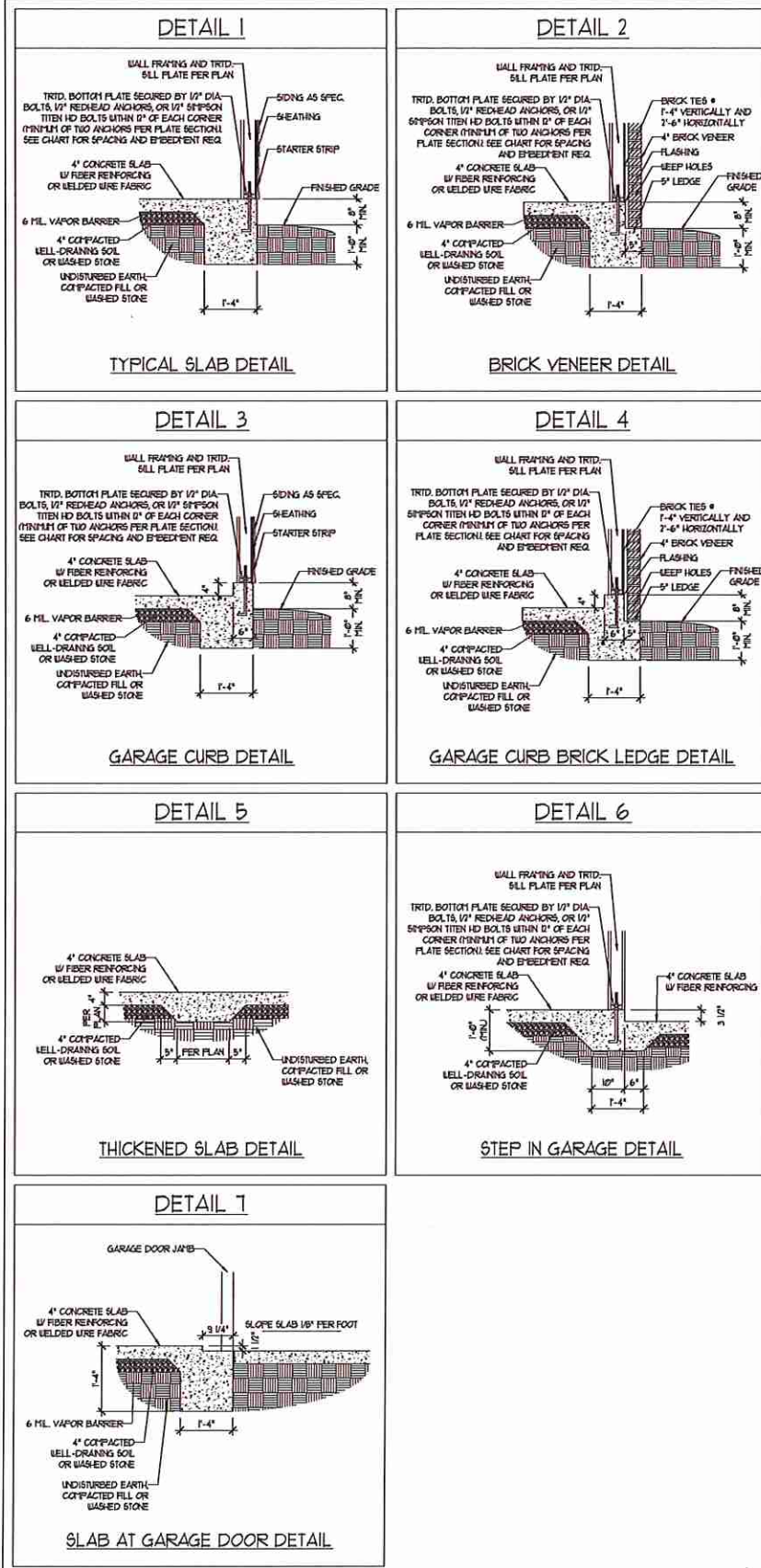
J.S. THOMPSON ENGINEERING, INC.
 606 WADE AVE., SUITE 104 RALEIGH, NC 27605
 PHONE: (919) 789-9919 FAX: (919) 789-9921
 N.C. LICENSE NO.: C-1733

TOPSAIL
 H&H HOMES

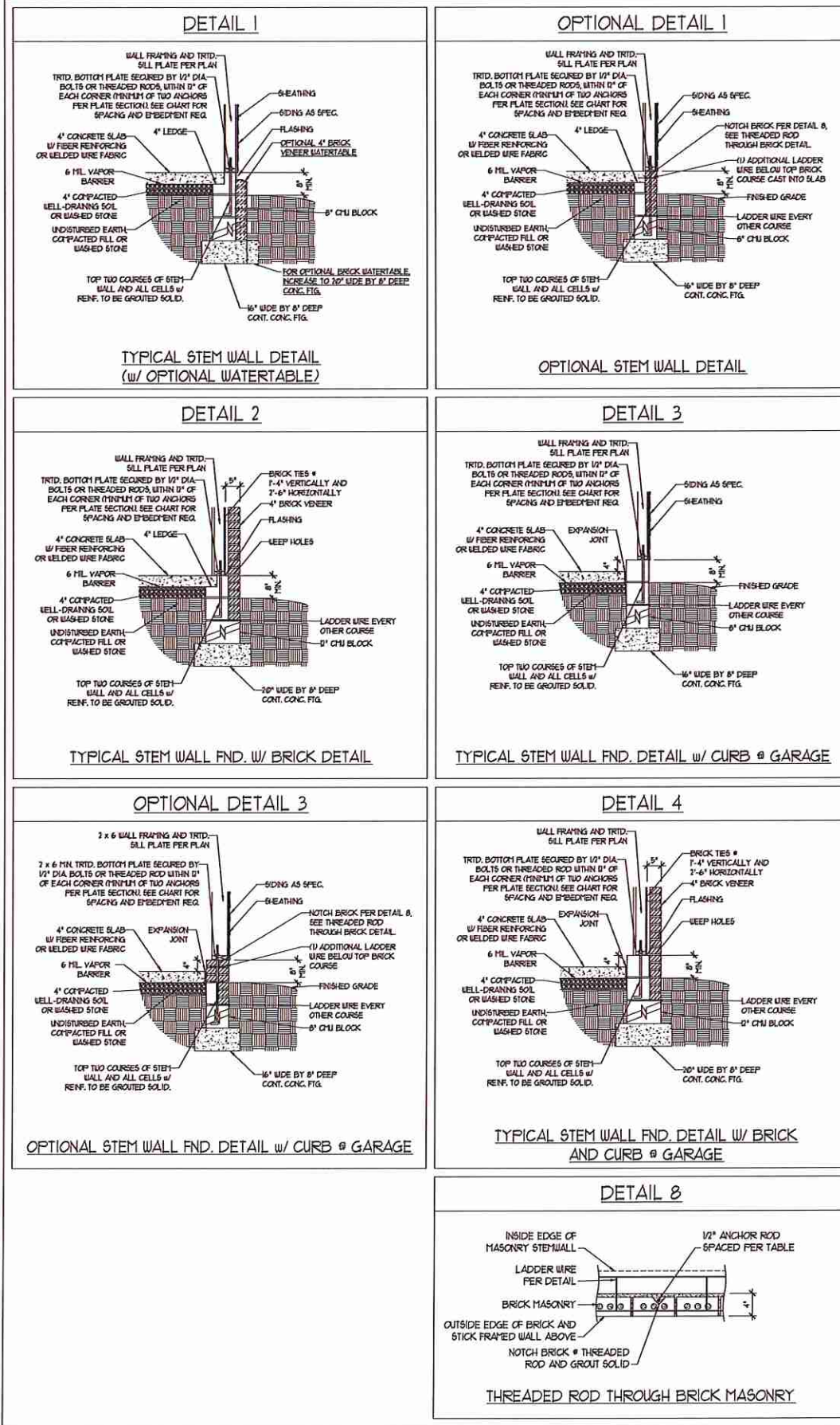
DATE: NOVEMBER 2, 2020
SCALE: 1/4" = 1'-0"
DRAWN BY: H&H HOMES
ENGINEERED BY: WFB

SHEET 8 OF 8
S4c
 ROOF FRAMING PLAN

MONOLITHIC SLAB DETAILS



STEMWALL DETAILS



MASONRY STEMWALL SPECIFICATIONS

WALL HEIGHT (FEET)	MASONRY WALL TYPE			
	8" CMU	4" BRICK AND 4" CMU	4" BRICK AND 8" CMU	12" CMU
2 AND BELOW	UNROUTED	GROUT SOLID	UNROUTED	UNROUTED
3	UNROUTED	GROUT SOLID	UNROUTED	UNROUTED
4	GROUT SOLID	GROUT SOLID w/ #4 REBAR @ 48" O.C.	GROUT SOLID	GROUT SOLID w/ #4 REBAR @ 64" O.C.
5	GROUT SOLID w/ #4 REBAR @ 36" O.C.	NOT APPLICABLE	GROUT SOLID w/ #4 REBAR @ 36" O.C.	GROUT SOLID w/ #4 REBAR @ 64" O.C.
6	GROUT SOLID w/ #4 REBAR @ 24" O.C.	NOT APPLICABLE	GROUT SOLID w/ #4 REBAR @ 24" O.C.	GROUT SOLID w/ #4 REBAR @ 64" O.C.
1 AND GREATER	ENGINEERED DESIGN BASED ON SITE CONDITIONS			

- STRUCTURAL NOTES:
- WALL HEIGHT MEASURED FROM TOP OF FOOTING TO TOP OF THE WALL.
 - THE MULTIPLE WYTHES TOGETHER WITH LADDER WIRE AT 16" O.C. VERTICALLY.
 - CHART APPLICABLE FOR HOUSE FOUNDATION ONLY. CONSULT ENGINEER FOR DESIGN OF GARAGE FOUNDATION NOT COMMON TO HOUSE.
 - BACKFILL OF CLEAN 5/1" #1 WASHED STONE IS ALLOWABLE.
 - BACKFILL OF WELL DRAINED OR SAND - GRAVEL MIXTURE SOILS (45 Pcf/Ft BELOW GRADE) CLASSIFIED AS GROUP 1 ACCORDING TO UNIFIED SOILS CLASSIFICATION SYSTEM IN ACCORDANCE WITH TABLE 4.02.1 OF THE 2018 INTERNATIONAL RESIDENTIAL CODE ARE ALLOWABLE.
 - PREP SLAB PER [506.2] AND [506.2.2] BASE OF THE 2018 INTERNATIONAL RESIDENTIAL CODE. MINIMUM 24" LAP SPLICE LENGTH.
 - LOCATE REBAR IN CENTER OF FOUNDATION WALL.
 - WHERE REQUIRED, FILL BLOCK SOLID WITH TYPE 'S' MORTAR OR 3000 PSI GROUT. USE OF "LOW LIFT GROUTING" METHOD REQUIRED WHEN FILLING WALLS WITH GROUT AT HEIGHTS OF 5' AND GREATER.

ANCHOR SPACING AND EMBEDMENT

WIND ZONE	120 MPH	130 MPH
SPACING	6'-0" O.C.	4'-0" O.C.
EMBEDMENT	1'	15" INTO MASONRY 1' INTO CONCRETE

J.S. THOMPSON ENGINEERING, INC.
 606 WADE AVE., SUITE 104 RALEIGH, NC 27605
 PHONE: (919) 789-9919 FAX: (919) 789-9921
 N.C. LICENSE NO.: C-1733

120 MPH - 130 MPH ULTIMATE DESIGN WIND SPEED
 FOUNDATION DETAILS

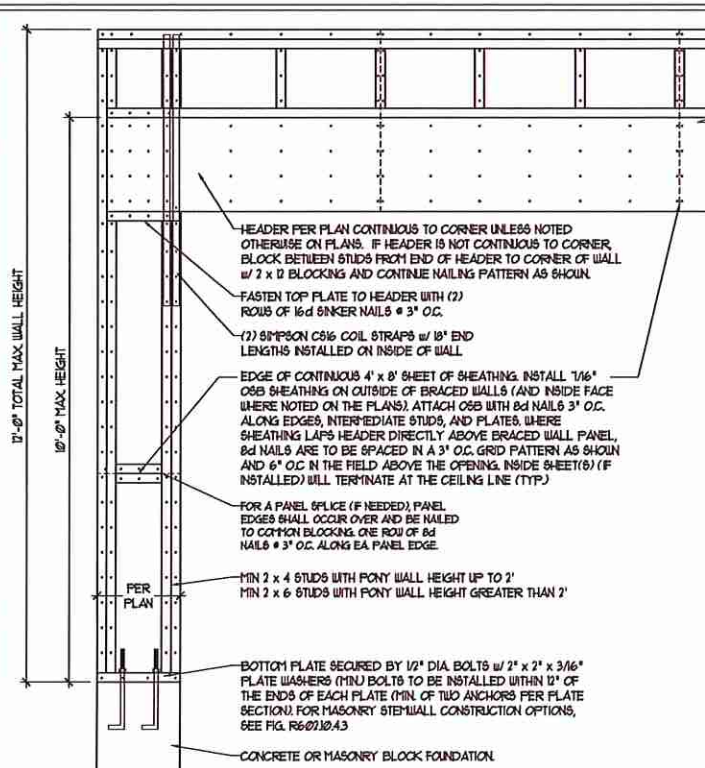
DATE: NOVEMBER 14, 2018
 SCALE: NTS
 DRAWN BY: JST
 ENGINEERED BY: JES



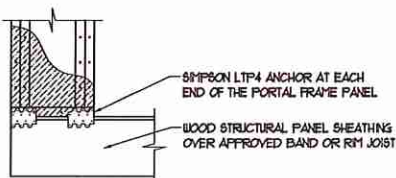
D-1
 FOUNDATION DETAILS

GENERAL WALL BRACING NOTES:

1. WALL BRACING DESIGNED IN ACCORDANCE WITH CHAPTER 6 OF THE 2018 NC RESIDENTIAL BUILDING CODE (NRC). TABLES AND FIGURES REFERENCED ARE FROM THE 2018 NRC.
2. SEE THIS SHEET FOR GENERAL DETAILS. REFER TO THE 2018 NRC FOR ADDITIONAL INFORMATION AS NEEDED.
3. SEE STRUCTURAL SHEETS FOR BRACED WALL LOCATIONS, DIMENSIONS, HOLD DOWN TYPE AND LOCATIONS, BRACED WALL LINE KEY WITH WALL DESIGN SUMMARY OF REQUIRED/PROVIDED TOTALS FOR EACH WALL LINE AND ANY SPECIAL NOTES OR REQUIREMENTS.
4. ALL EXTERIOR WALLS ARE TO BE SHEATHED WITH CS-WSP IN ACCORDANCE WITH SECTION R6-02.10.3 UNLESS NOTED OTHERWISE.
5. ALL EXTERIOR AND INTERIOR WALLS TO HAVE 1/2" GYPSUM INSTALLED, WHEN NOT USING METHOD 'GB', GYPSUM TO BE FASTENED PER TABLE R102.3.5. METHOD GB TO BE FASTENED PER TABLE R6-02.10.1.
6. CS-WSP REFERS TO THE 'CONTINUOUS SHEATHING - WOOD STRUCTURAL PANELS' WALL BRACING METHOD. 1/8" OSB SHEATHING IS TO BE INSTALLED ON ALL EXTERIOR WALLS ATTACHED w/ 6d COMMON NAILS OR 8d (2 1/2" LONG x 0.13" DIAMETER) NAILS SPACED 6" O.C. ALONG PANEL EDGES AND 12" O.C. IN THE FIELD (UNO).
7. GB REFERS TO THE 'GYPSUM BOARD' WALL BRACING METHOD. 1/2" (MIN) GYPSUM WALL BOARD IS TO BE INSTALLED ON BOTH SIDES OF THE BRACED WALL FASTENED WITH 1 1/4" SCREWS OR 1 5/8" NAILS SPACED 1" O.C. ALONG PANEL EDGES INCLUDING TOP AND BOTTOM PLATES AND INTERMEDIATE SUPPORTS (UNO). VERIFY ALL FASTENER OPTIONS FOR 1/2" AND 5/8" GYPSUM PRIOR TO CONSTRUCTION. FOR INTERIOR FASTENERS OPTIONS SEE TABLE R102.3.5. FOR EXTERIOR FASTENER OPTIONS SEE TABLE R6-02.3(1). EXTERIOR GB TO BE INSTALLED VERTICALLY.
8. REQUIRED BRACED WALL LENGTH FOR EACH SIDE OF THE CIRCUMSCRIBED RECTANGLE ARE INTERPOLATED PER TABLE R6-02.10.3. METHOD CS-WSP CONTRIBUTES ITS ACTUAL LENGTH, METHOD GB CONTRIBUTES 5 TIMES ITS ACTUAL LENGTH, AND METHOD PF CONTRIBUTES 15 TIMES ITS ACTUAL LENGTH.



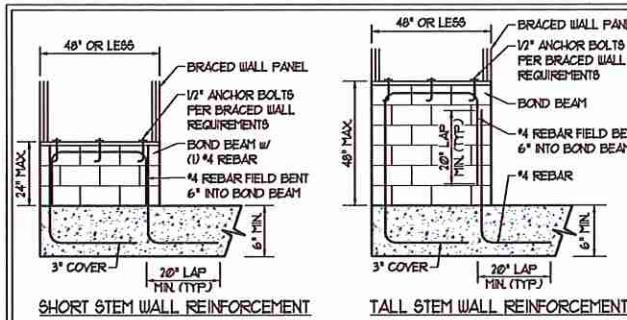
OVER CONCRETE OR MASONRY BLOCK FOUNDATION



OVER RAISED WOOD FLOOR - FRAMING ANCHOR OPTION

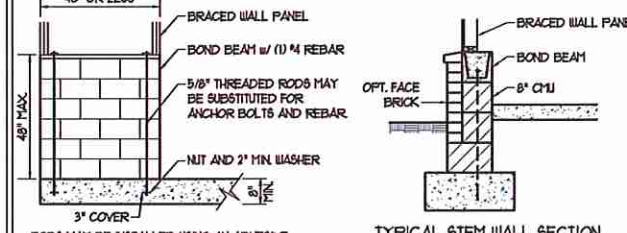
* APPLICABLE w/ GREATER THAN 10' KNEE WALL HEIGHTS IN CRAIL SPACE AND ABOVE FRAMED BASEMENT WALLS *

METHOD PF-PORTAL FRAME DETAIL ①



SHORT STEM WALL REINFORCEMENT

TALL STEM WALL REINFORCEMENT



TYPICAL STEM WALL SECTION

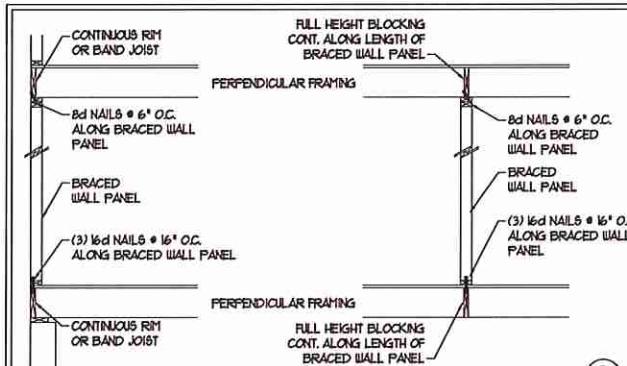
RODS MAY BE INSTALLED USING AN ADHESIVE ANCHORING SYSTEM WITH A MINIMUM TENSILE CAPACITY OF 3500 LBS AND INSTALLED IN ACCORDANCE WITH MANUFACTURER'S SPECS.

OPTIONAL STEM WALL REINFORCEMENT

NOTE: GROUT BOND BEAMS AND ALL CELLS WHICH CONTAIN REBAR THREADED RODS AND ANCHOR BOLTS

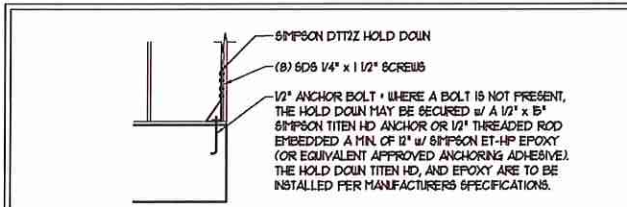
MASONRY STEM WALLS SUPPORTING BRACED WALL PANELS ②

PER FIGURE R6-02.10.4.3



BRACED WALL PANEL CONNECTION WHEN PERPENDICULAR TO FLOOR/CEILING FRAMING ③

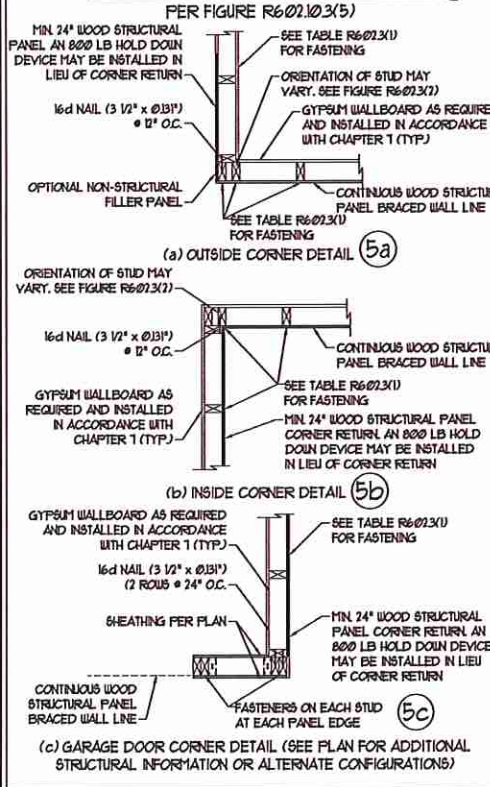
PER FIGURE R6-02.10.4.4(1)



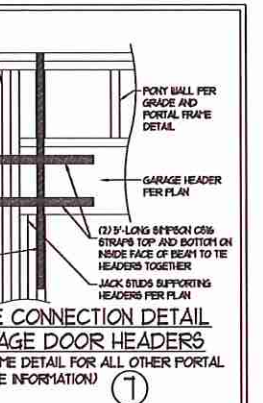
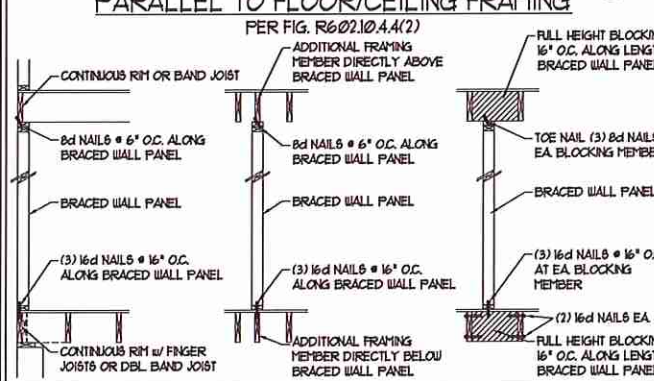
HOLD DOWN DETAIL FOR MASONRY FOUNDATION OR MONOLITHIC SLAB ④

* APPLICABLE ONLY WHERE SPECIFIED ON PLAN *

TYPICAL EXTERIOR CORNER FRAMING FOR CONTINUOUS SHEATHING ⑤

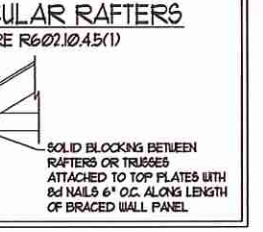


BRACED WALL PANEL CONNECTION WHEN PARALLEL TO FLOOR/CEILING FRAMING ⑥

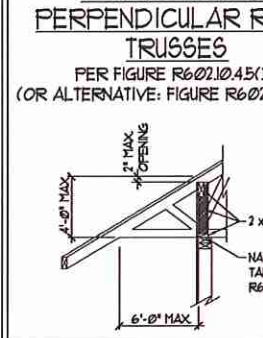


PORTAL FRAME CONNECTION BETWEEN GARAGE DOOR HEADERS (REFERENCE PORTAL FRAME DETAIL FOR ALL OTHER PORTAL FRAME INFORMATION) ⑦

BRACED WALL PANEL CONNECTION TO PERPENDICULAR RAFTERS ⑧



BRACED WALL PANEL CONNECTION TO PERPENDICULAR ROOF TRUSSES ⑨



This sealed page is to be used in conjunction with a full plan set engineered by J.S. Thompson Engineering, Inc. only. Use of this individual sealed page within architectural pages or shop drawings by others is a punishable offense under N.C. Statute § 89C-23



J.S. THOMPSON ENGINEERING, INC.
606 WADE AVE. SUITE 104 RALEIGH, NC 27605
PHONE: (919) 789-9919 FAX: (919) 789-9921
N.C. LICENSE NO.: C1173

120 MPH - 130 MPH ULTIMATE DESIGN WIND SPEED
WALL BRACING NOTES AND DETAILS

DATE: NOVEMBER 14, 2018
SCALE: 1/4" = 1'-0"
DRAWN BY: JST
ENGINEERED BY: JST

D-2
BRACED WALL NOTES AND DETAILS AND PF DETAIL

GENERAL NOTES

- ENGINEER'S SEAL APPLIES ONLY TO STRUCTURAL COMPONENTS INCLUDING ROOF RAFTERS, HIPS, VALLEYS, RIDGES, FLOORS, WALLS, BEAMS, HEADERS, COLUMNS, CANTILEVERS, OFFSET LOAD BEARING WALLS, PIERS, GIRDER SYSTEM AND FOOTING. ENGINEER'S SEAL DOES NOT CERTIFY DIMENSIONAL ACCURACY OF ARCHITECTURAL LAYOUT INCLUDING ROOF. ENGINEER'S SEAL DOES NOT APPLY TO I-JOIST OR FLOOR/ROOF TRUSS LAYOUT DESIGN AND ACCURACY.
 - ALL CONSTRUCTION SHALL CONFORM TO THE LATEST REQUIREMENTS OF THE NORTH CAROLINA RESIDENTIAL CODE (NRC), 2018 EDITION, PLUS ALL LOCAL CODES AND REGULATIONS. THE STRUCTURAL ENGINEER IS NOT RESPONSIBLE FOR, AND WILL NOT HAVE CONTROL OF, CONSTRUCTION MEANS, METHODS, TECHNIQUES, SEQUENCES OR PROCEDURES, OR SAFETY PRECAUTIONS AND PROGRAMS IN CONNECTION WITH THE CONSTRUCTION WORK. NOR WILL THE ENGINEER BE RESPONSIBLE FOR THE CONTRACTOR'S FAILURE TO CARRY OUT THE CONSTRUCTION WORK IN ACCORDANCE WITH THE CONTRACT DOCUMENTS.
 - STRUCTURAL DESIGN BASED ON THE PROVISIONS OF THE NRC, 2018 EDITION (R301.4 - R301.7)
- | DESIGN CRITERIA: | LIVE LOAD (PSF) | DEAD LOAD (PSF) | DEFLECTION (IN) |
|--|--------------------|-----------------|-----------------------------------|
| ATTIC WITH LIMITED STORAGE | 20 | 10 | L/140 (L/360 w/ BRITTLE FINISHES) |
| ATTIC WITHOUT STORAGE | 10 | 10 | L/360 |
| DECKS | 40 | 10 | L/360 |
| EXTERIOR BALCONIES | 40 | 10 | L/360 |
| FIRE ESCAPES | 40 | 10 | L/360 |
| HANDRAILS/GUARDRAILS | 200 LB OR 50 (PLF) | 10 | L/360 |
| PASSENGER VEHICLE GARAGE | 50 | 10 | L/360 |
| ROOMS OTHER THAN SLEEPING ROOM | 40 | 10 | L/360 |
| SLEEPING ROOMS | 30 | 10 | L/360 |
| STAIRS | 40 | 10 | L/360 |
| WIND LOAD
(BASED ON TABLE R301.2(4) WIND ZONE AND EXPOSURE) | | | |
| GROUND SNOW LOAD: Pg | 20 (PSF) | | |
- I-JOIST SYSTEMS DESIGNED WITH 12 PSF DEAD LOAD AND DEFLECTION (IN) OF L/400
 - FLOOR TRUSS SYSTEMS DESIGNED WITH 15 PSF DEAD LOAD
- FOR 15 AND 20 MPH WIND ZONES, FOUNDATION ANCHORAGE IS TO COMPLY WITH SECTION R403.16 OF THE NRC, 2018 EDITION. FOR 30 MPH, 40 MPH, AND 50 MPH WIND ZONES, FOUNDATION ANCHORAGE IS TO COMPLY WITH SECTION 450.4 OF THE NRC, 2018 EDITION.
 - ENERGY EFFICIENCY COMPLIANCE AND INSULATION VALUES OF THE BUILDING TO BE IN ACCORDANCE WITH CHAPTER II OF THE NRC, 2018 EDITION.

FOOTING AND FOUNDATION NOTES

- FOUNDATION DESIGN BASED ON A MINIMUM ALLOWABLE BEARING CAPACITY OF 2000 PSF. CONTACT GEOTECHNICAL ENGINEER IF BEARING CAPACITY IS NOT ACHIEVED.
- FOR ALL CONCRETE SLABS AND FOOTINGS, THE AREA WITHIN THE PERIMETER OF THE BUILDING ENVELOPE SHALL HAVE ALL VEGETATION TOP SOIL AND FOREIGN MATERIAL REMOVED. FILL MATERIAL SHALL BE FREE OF VEGETATION AND FOREIGN MATERIAL. THE FILL SHALL BE COMPACTED TO ASSURE UNIFORM SUPPORT OF THE SLAB, AND EXCEPT WHERE APPROVED, THE FILL DEPTHS SHALL NOT EXCEED 24" FOR CLEAN SAND OR GRAVEL. A 4" THICK BASED COURSE CONSISTING OF CLEAN GRADED SAND OR GRAVEL SHALL BE PLACED. A BASE COURSE IS NOT REQUIRED WHERE A CONCRETE SLAB IS INSTALLED ON WELL-DRAINED OR SAND-GRAVEL MIXTURE SOILS CLASSIFIED AS GROUP I, ACCORDING TO THE UNITED SOIL CLASSIFICATION SYSTEM IN ACCORDANCE WITH TABLE R405.1 OF THE NRC, 2018 EDITION.
- PROPERLY DELATER EXCAVATION PRIOR TO POURING CONCRETE WHEN BOTTOM OF CONCRETE SLAB IS AT OR BELOW WATER TABLE. IF APPLICABLE, 3/4" - 1" DEEP CONTROL JOINTS ARE TO BE SALED WITHIN 4 TO 12 HOURS OF CONCRETE FINISHING AND WALL LOCATIONS HAVE BEEN MARKED. ADJUST WHERE NECESSARY.
- CONCRETE SHALL CONFORM TO SECTION R402.2 OF THE NRC, 2018 EDITION. CONCRETE REINFORCING STEEL TO BE ASTM A615 GRADE 60, WELDED WIRE FABRIC TO BE ASTM A185. MAINTAIN A MINIMUM CONCRETE COVER AROUND REINFORCING STEEL OF 3" IN FOOTINGS AND 1 1/2" IN SLABS. FOR POURED CONCRETE WALLS, CONCRETE COVER FOR REINFORCING STEEL MEASURED FROM THE INSIDE FACE OF THE WALL SHALL NOT BE LESS THAN 3/4". CONCRETE COVER FOR REINFORCING STEEL MEASURED FROM THE OUTSIDE FACE OF THE WALL SHALL NOT BE LESS THAN 1 1/2" FOR 5 BARS OR SMALLER, AND NOT LESS THAN 2" FOR 6 BARS OR LARGER.
- MASONRY UNITS TO CONFORM TO ACE 530/ASCE 5/11/19 402. MORTAR SHALL CONFORM TO ASTM C710.
- THE UNSUPPORTED HEIGHT OF MASONRY PIERS SHALL NOT EXCEED FOUR TIMES THEIR LEAST DIMENSION FOR UNFILLED HOLLOW CONCRETE MASONRY UNITS AND TEN TIMES THEIR LEAST DIMENSION FOR SOLID OR SOLID FILLED PIERS. PIERS MAY BE FILLED SOLID WITH CONCRETE OR TYPE M OR S MORTAR. PIERS AND WALLS SHALL BE CAPPED WITH 8" OF SOLID MASONRY.
- THE CENTER OF EACH OF THE PIERS SHALL BEAR IN THE MIDDLE THIRD OF ITS RESPECTIVE FOOTING. EACH GIRDER SHALL BEAR IN THE MIDDLE THIRD OF THE PIERS.
- ALL CONCRETE AND MASONRY FOUNDATION WALLS ARE TO BE CONSTRUCTED IN ACCORDANCE WITH THE PROVISIONS OF SECTION R404 OF THE NRC, 2018 EDITION OR IN ACCORDANCE WITH ACI 318, ACI 332, NCHA TR69-A OR ACE 530/ASCE 5/11/19 402. MASONRY FOUNDATION WALLS ARE TO BE REINFORCED PER TABLE R404.1(1), R404.1(2), R404.1(3), OR R404.1(4) OF THE NRC, 2018 EDITION. CONCRETE FOUNDATION WALLS ARE TO BE REINFORCED PER TABLE R404.1(5) OF THE NRC, 2018 EDITION. STEP CONCRETE FOUNDATION WALLS TO 2 x 6 FRAME WALLS AT 16" O.C. WHERE GRADE PERMITS (N.O.).

This sealed page is to be used in conjunction with a full plan set engineered by J.S. Thompson Engineering, Inc. only. Use of this individual sealed page within architectural pages or shop drawings by others is a punishable offense under N.C. Statute § 89C-23

FRAMING NOTES

- ALL FRAMING LUMBER SHALL BE #2 SFF MINIMUM (Fb = 875 PSI, Fv = 375 PSI, E = 16000000 PSI) UNLESS NOTED OTHERWISE (N.O.). ALL TREATED LUMBER SHALL BE #2 SYP MINIMUM (Fb = 575 PSI, Fv = 175 PSI, E = 16000000 PSI) UNLESS NOTED OTHERWISE (N.O.).
- LAMINATED VENEER LUMBER (LVL) SHALL HAVE THE FOLLOWING MINIMUM PROPERTIES: Fb = 2600 PSI, Fv = 700 PSI, E = 15000000 PSI. LAMINATED STRAND LUMBER (LSL) SHALL HAVE THE FOLLOWING MINIMUM PROPERTIES: Fb = 2375 PSI, Fv = 310 PSI, E = 15000000 PSI. PARALLEL STRAND LUMBER (PSL) UP TO 1" DEPTH SHALL HAVE THE FOLLOWING MINIMUM PROPERTIES: Fc = 2500 PSI, E = 10000000 PSI. PARALLEL STRAND LUMBER (PSL) MORE THAN 1" DEPTH SHALL HAVE THE FOLLOWING MINIMUM PROPERTIES: Fc = 2900 PSI, E = 20000000 PSI. INSTALL ALL CONNECTIONS PER MANUFACTURER'S SPECIFICATIONS.
- STRUCTURAL STEEL SHALL CONFORM TO THE FOLLOWING ASTM SPECIFICATIONS

A. I AND WT SHAPES:	ASTM A992
B. CHANNELS AND ANGLES:	ASTM A36
C. PLATES AND BARS:	ASTM A36
D. HOLLOW STRUCTURAL SECTIONS:	ASTM A500 GRADE B
E. STEEL PIPE:	ASTM A53, GRADE B, TYPE E OR S
- STEEL BEAMS SHALL BE SUPPORTED AT EACH END WITH A MINIMUM BEARING LENGTH OF 3 1/2' AND FULL FLANGE WIDTH (N.O.). PROVIDE SOLID BEARING FROM BEAM SUPPORT TO FOUNDATION. BEAMS SHALL BE ATTACHED AT THE BOTTOM FLANGE TO EACH SUPPORT AS FOLLOWS (N.O.):

A. WOOD FRAMING	(2) 1/2" DIA. x 4" LONG LAG SCREWS
B. CONCRETE	(2) 1/2" DIA. x 4" WEDGE ANCHORS
C. MASONRY (FULLY GROUTED)	(2) 1/2" DIA. x 4" LONG SIMPSON TITEN HD ANCHORS

LATERAL SUPPORT IS CONSIDERED ADEQUATE PROVIDING THE JOISTS ARE TOE NAILED TO THE 2x NAILER ON TOP OF THE STEEL BEAM, AND THE 2x NAILER IS SECURED TO THE TOP OF THE STEEL BEAM w/ (2) ROUS OF SELF TAPPING SCREWS # 16" O.C. OR (2) ROUS OF 1/2" DIAMETER BOLTS # 16" O.C. IF 1/2" BOLTS ARE USED TO FASTEN THE NAILER, THE STEEL BEAM SHALL BE FABRICATED w/ (2) ROUS OF 3/16" DIAMETER HOLES # 16" O.C.
- SQUARES DENOTE POINT LOADS WHICH REQUIRE SOLID BLOCKING TO GIRDER OR FOUNDATION. SHADED SQUARES DENOTE POINT LOADS FROM ABOVE WHICH REQUIRE SOLID BLOCKING TO SUPPORTING MEMBER BELOW.
- ALL LOAD BEARING HEADERS TO CONFORM TO TABLE R602.1(1) AND R602.1(2) OF THE NRC, 2018 EDITION OR BE (2) 2 x 6 WITH (1) JACK AND (1) KING STUD EACH END (N.O.), WHICHEVER IS GREATER. ALL HEADERS TO BE SECURED TO EACH JACK STUD WITH (4) 8d NAILS. ALL BEAMS TO BE SUPPORTED WITH (2) STUDS AT EACH BEARING POINT (N.O.). INSTALL KING STUDS PER SECTION R602.15 OF THE NORTH CAROLINA RESIDENTIAL CODE, 2018 EDITION.
- ALL BEAMS, HEADERS, OR GIRDER TRUSSES PARALLEL TO WALL ARE TO BEAR FULLY ON (1) JACK OR (2) STUDS MINIMUM OR THE NUMBER OF JACKS OR STUDS NOTED. ALL BEAMS OR GIRDER TRUSSES PERPENDICULAR TO WALL AND SUPPORTED BY (3) STUDS OR LESS ARE TO HAVE 1 1/2" MINIMUM BEARING (N.O.). ALL BEAMS OR GIRDER TRUSSES PERPENDICULAR TO WALL AND SUPPORTED BY MORE THAN (3) STUDS OR OTHER NOTED COLUMN ARE TO BEAR FULLY ON SUPPORT COLUMN FOR ENTIRE WALL DEPTH (N.O.). BEAM ENDS THAT BUTT INTO ONE ANOTHER ARE TO EACH BEAR EQUAL LENGTHS (N.O.).
- FLITCH BEAMS SHALL BE BOLTED TOGETHER USING 1/2" DIAMETER BOLTS (ASTM A307) WITH WASHERS PLACED AT THREADED END OF BOLT. BOLTS SHALL BE SPACED AT 24" CENTERS (MAXIMUM), AND STAGGERED AT TOP AND BOTTOM OF BEAM (2" EDGE DISTANCE) WITH (2) BOLTS LOCATED AT 6" FROM EACH END (N.O.).
- ALL I-JOIST OR TRUSS LAYOUTS ARE TO BE IN COMPLIANCE WITH THE OVERALL DESIGN SPECIFIED ON THE PLANS. ALL DEVIATIONS ARE TO BE BROUGHT TO THE ATTENTION OF THE ENGINEER OF RECORD PRIOR TO INSTALLATION.
- BRACED WALL PANELS SHALL BE CONSTRUCTED ACCORDING TO THE NORTH CAROLINA RESIDENTIAL CODE 2018 EDITION WALL BRACING CRITERIA. THE AMOUNT, LENGTH AND LOCATION OF BRACING SHALL COMPLY WITH ALL APPLICABLE TABLES IN SECTION R602.10.
- PROVIDE DOUBLE JOIST UNDER ALL WALLS PARALLEL TO FLOOR JOISTS. PROVIDE SUPPORT UNDER ALL WALLS PARALLEL TO FLOOR TRUSSES OR I-JOISTS PER MANUFACTURER'S SPECIFICATIONS. INSTALL BLOCKING BETWEEN JOISTS OR TRUSSES FOR POINT LOAD SUPPORT FOR ALL POINT LOADS ALONG OFFSET LOAD LINES.
- FOR ALL HEADERS SUPPORTING BRICK VENEER THAT ARE LESS THAN 8'-0" IN LENGTH, REST A 6" x 4" x 5/16" STEEL ANGLE WITH 6" MINIMUM EMBEDMENT AT SIDES FOR BRICK SUPPORT (N.O.). FOR ALL HEADERS 8'-0" AND GREATER IN LENGTH, BOLT A 6" x 4" x 5/16" STEEL ANGLE TO HEADER WITH 1/2" LAG SCREWS AT 12" O.C. STAGGERED FOR BRICK SUPPORT. FOR ALL BRICK SUPPORT AT ROOF LINES, BOLT A 6" x 4" x 5/16" STEEL ANGLE TO (2) 2 x 10 BLOCKING INSTALLED w/ (4) 10d NAILS EA. PLY BETWEEN WALL STUDS WITH (2) ROUS OF 1/2" LAG SCREWS AT 12" O.C. STAGGERED AND IN ACCORDANCE WITH SECTION R703.2(2) OF THE NRC, 2018 EDITION.
- FOR STICK FRAMED ROOFS: CIRCLES DENOTE (3) 2 x 4 POSTS FOR ROOF MEMBER SUPPORT. HIP SPLICES ARE TO BE SPACED A MINIMUM OF 8'-0". FASTEN MEMBERS WITH THREE ROUS OF 10d NAILS AT 16" O.C. FRAME DORMER WALLS ON TOP OF DOUBLE OR TRIPLE RAFTERS AS SHOWN (N.O.).
- FOR TRUSSED ROOFS: FRAME DORMER WALLS ON TOP OF 2 x 4 LADDER FRAMING AT 24" O.C. BETWEEN ADJACENT ROOF TRUSSES. STICK FRAME OVER-FRAMED ROOF SECTIONS WITH 2 x 8 RIDGES, 2 x 6 RAFTERS AT 16" O.C. AND FLAT 2 x 10 VALLEYS (N.O.).
- ALL 4 x 4 AND 6 x 6 POSTS TO BE INSTALLED WITH 1000 LB CAPACITY UPLIFT CONNECTORS TOP AND BOTTOM (N.O.). POSTS MAY BE SECURED USING ONE SIMPSON L6 OR L102 UPLIFT CONNECTOR FASTENED TO THE BAND AT THE BOTTOM AND THE BEAM AT THE TOP OF EACH POST. ONE 16" SECTION OF SIMPSON C516 COIL STRAPPING WITH (8) 8d HDG NAILS AT EACH END MAY BE USED IN LIEU OF EACH TWIN STRAP IF DESIRED. FOR MASONRY OR CONCRETE FOUNDATION USE SIMPSON POST BASE.

J.S. THOMPSON ENGINEERING, INC.
 606 WADE AVE., SUITE 104 RALEIGH, NC 27605
 PHONE: (919) 789-9919 FAX: (919) 789-9921
 N.C. LICENSE NO.: C-1733

120 MPH - 130 MPH ULTIMATE DESIGN WIND SPEED
 STANDARD STRUCTURAL NOTES

DATE: NOVEMBER 14, 2018
 SCALE: 1/4" = 1'-0"
 DRAWN BY: JES
 ENGINEERED BY: JST



S-0
 STRUCTURAL NOTES