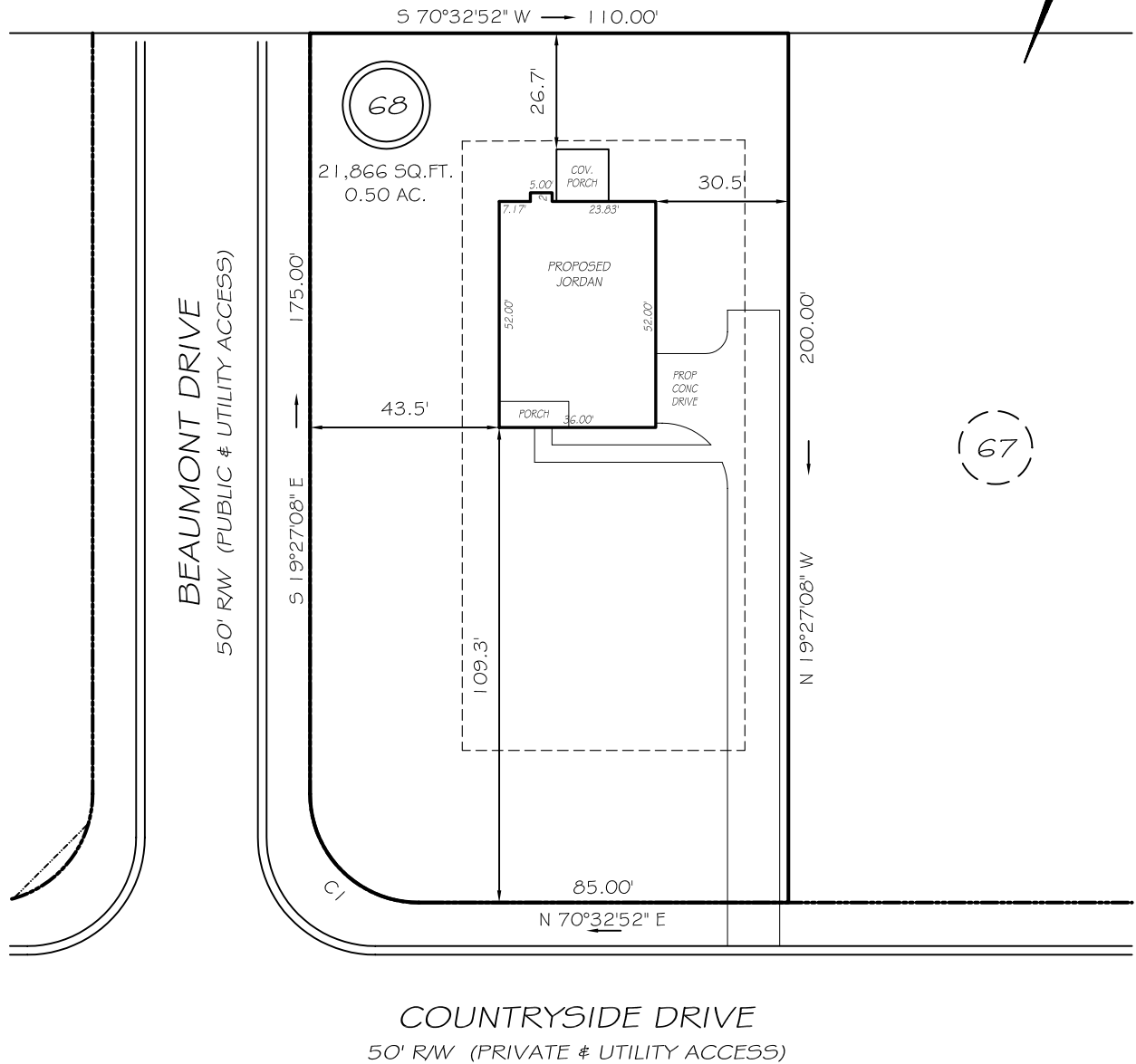


I, MICHAEL P. GRIFFIN, certify that under my direction and supervision this map was drawn from an actual field survey; that the error of closure of the survey as calculated by coordinates is 1: 10,000+; that the area shown hereon was calculated by coordinates.

Witness my hand and seal this day of MONTH 2021.

BK 2021 PG 159-161
HARNETT CO. REGISTRY

N/F
WEST DOUGLAS H
& WEST DALLAS M
DB 3255 PG 134
PB 2014 PG 286



67

C1

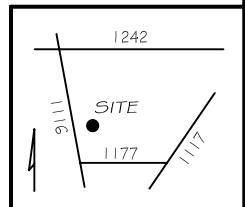
SETBACKS

FRONT	35'
REAR	25'
SIDE	10'
CORNER	20'

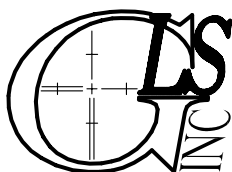
REVISION: 2 CAR, SIDeload 7/16/21
REVISION: MOVE BACK 7/13/21
C1R=25.00' L=39.27' N64°27'08"W 35.36'

LEGEND

EIP	EXISTING IRON PIPE	FES	FLARED END SECTION
IPS	IRON PIPE SET	WM	WATER METER
RW	RIGHT OF WAY	CO	CLEAN OUT
N/F	NOW OR FORMERLY	FH	FIRE HYDRANT
EIS	EXISTING IRON STAKE	CB	CATCH BASIN



PRELIMINARY
NOT FOR RECORDATION,
SALES OR CONVEYANCE



GRIFFIN LAND SURVEYING, INC.

P. O. BOX 148
FUQUAY-VARINA, NC 27526
(919) - 567 - 1963

PLOT PLAN
FOR
H & H HOMES

OAKMONT
LOT 68
COUNTRYSIDE DRIVE
NORTH CAROLINA

HARNETT COUNTY BARBECUE TOWNSHIP

DRAWN BY NMF

DATE 4/23/21

CHECKED BY MPG

SCALE 1" = 40'