

JORDAN

NOTICE TO CONTRACTOR
All construction must comply with current NC Building Codes and is subject to field inspection and verification.

APPROVED
Limited building only review
Permit holder responsible for full compliance with the code

05/25/2021




JORDAN REVISION LIST - STRUCTURAL:

- 1.) CODE UPDATE TO SCRC 2018 (1-20)
- 2.) CHANGE 2X6 EXTERIOR WALLS TO 2X4 EXTERIOR WALLS. (3-5-20)
- 3.) ADDED BASEMENT PLAN WHICH EXTENDS GARAGE FRONT 2'-0". (5-1-20)

JORDAN REVISION LIST - ARCHITECTURAL:

- 1.) UPDATED PLANS: 7'-0" HDR HGT. ADDED 2 HOSE BIBB LOC'NS, CHANGE MASTERS TO OWNERS, CHANGE SOFFITS TO C.O., CHANGE MASTERS BATH TO OWNER'S BATH 1, CHANGED POWDER TO PDR 1, AND CHANGED BATH TO BATH 2. (11-4-19)
- 2.) ADDED ROOF VENT CALCULATIONS FOR ELEV. A AND B. (12-2-19)
- 3.) UPDATED CUTSHEETS FOR THE GARAGE RIGHT. (12-13-19)
- 4.) CHANGED FIREPLACE FROM STANDARD TO OPTIONAL. (5-1-20)
- 5.) REMOVE GLASS INSERTS FROM GARAGE WINDOWS AND REMOVE METAL ACCESSORIES (5-1-20)
- 6.) UPDATED CUTSHEETS TO MEET H&H STANDARDS. (5-1-20)
- 7.) ADDED OPTIONAL GLASS INSERTS TO TOP WINDOWS ONLY TO GARAGE DOORS. (5-1-20)
- 8.) CHANGED THE CORNERBOARDS FROM 6" TO 4". (5-1-20)
- 9.) REMOVED OPTIONAL KITCHEN CAN AND REPLACED WITH FLUORSCENT LIGHT IN THE KITCHEN. (5-1-20)
- 10.) CHANGE LOCATION OF THE HOSE BIBBS. (5-1-20)
- 11.) ADDED OPTIONAL GAS LINE NOTE AT PATIO. (5-1-20)
- 12.) CHANGED REFRIGERATOR, WASHER, AND DRYER TO OPTIONAL COMPONENTS. (5-1-20)
- 13.) CHANGE COFFERED CEILING IN DINING TO OPTIONAL WITH DETAIL. (5-1-20)
- 14.) ADDED WEATHERING STRIPPING AT 2'-0" X 4'-0" SOLID DOOR. (5-1-20)
- 15.) ADDED NOTE TO REMOVE (1)-3'-0" 5'-0" WINDOW FOR BEDROOM #5 OPTION. (5-1-20)
- 16.) REMOVED GRIDS FROM SIDE AND REAR WINDOWS. (5-1-20)
- 17.) CHANGED 3'-0" 5'-0" WINDOW IN LOFT TO STANDARD. (5-1-20)
- 18.) UPDATED STONE HATCH ON ELEVATIONS. (5-1-20)
- 19.) REMOVED ALL TV OUTLETS, PHONE OUTLETS, AND ELECTRICAL OUTLETS EXCEPT FLOOR OUTLETS. (5-1-20)
- 20.) ADDED CO₂ DETECTORS PER LOCATE CODE. (5-1-20)
- 21.) CHANGED CEILING FANS TO OPTIONAL AND CHANGE THE LIGHTS TO PRE-WIRE. (5-1-20)
- 22.) ADDED CRICKETS TO FRONT ELEVATIONS. (5-1-20)
- 23.) UPDATED THE ELEVATION COACH LIGHTS TO MATCH THE ELECTRICAL PLANS. (5-1-20)
- 24.) CREATED ADDITIONAL SHEETS FOR FIRST FLOOR AND SECOND FLOOR OPTIONS (A4-1, A5-1, A6-1, A7-1, E-3, AND E-4) AND REMOVED OPTIONS FROM BASE SHEETS. (5-1-20)
- 25.) ADDED DIMENSION FOR WATER TABLE TO FINISH FLOOR ON ELEVATION. (5-1-20)
- 26.) ADDED INSULATION DETAIL TO FIRST AND SECOND FLOOR SHEETS. (5-1-20)
- 27.) ADDED OPTIONAL (9) RECESS LIGHTING AND SWITCHES IN FAMILY ROOM. (5-1-20)
- 28.) ADDED SHEET 7.0 FOR FLOOR PLAN EXTERIOR SURFACES LAYOUTS. (5-1-20)
- 28.) CREATED OWNER'S BATH 2 AND OWNER'S BATH 3. (5-1-20)
- 28.) ADDED SHOWER DETAIL FOR OPTIONAL OWNER'S BATH 3. (5-1-20)
- 29.) UPDATED CUTSHEETS. (5-1-20)
- 30.) CHANGED OWNER'S BATH #3 WINDOW FROM 2'-0" 2'-0" WINDOW TO 2'-0" 4'-0" TEMP. (5-1-20)
- 31.) ADDED PATIO W/ EXTENDED PATIO OPTION. (5-1-20)
- 32.) ADDED OPTIONAL BASEMENT PLAN. (5-1-20)
- 33.) ADDED CHANGES TO OPTIONS WHEN BASEMENT OPTION SELECTED. (5-1-20)
- 34.) REVISED SHUTTERS ON ELEVATIONS B TO BE B&B (5-1-20)
- 35.) REMOVED HARDWARE FROM SHUTTERS ON ELEVATION C (5-1-20)
- 36.) REMOVED LIGHT OVER KITCHEN SINK (7-8-20)
- 37.) REMOVED NOTE "KEYLESS" FROM GARAGE CHANGED TO STANDARD CEILING MOUNTED LIGHT (7-8-20)
- 38.) CHANGED STANDARD LIGHT IN KITCHEN FROM 2-BULB FLUORESCENT TO 3 BULB CEILING MOUNT (7-8-20)
- 39.) CHANGED SWING OF SERVICE DOOR IN GARAGE TO OUT SWING (SEE SHEET A6.1) (7-8-20)
- 40.) REMOVED LIGHT IN SECONDARY BATH OVER TUB/SHOWER COMBO (7-8-20)
- 41.) REMOVED "RECESSED ENTERTAINMENT BOX" OVER FIREPLACE (7-8-20)

Inventory Marked

OKM0000000

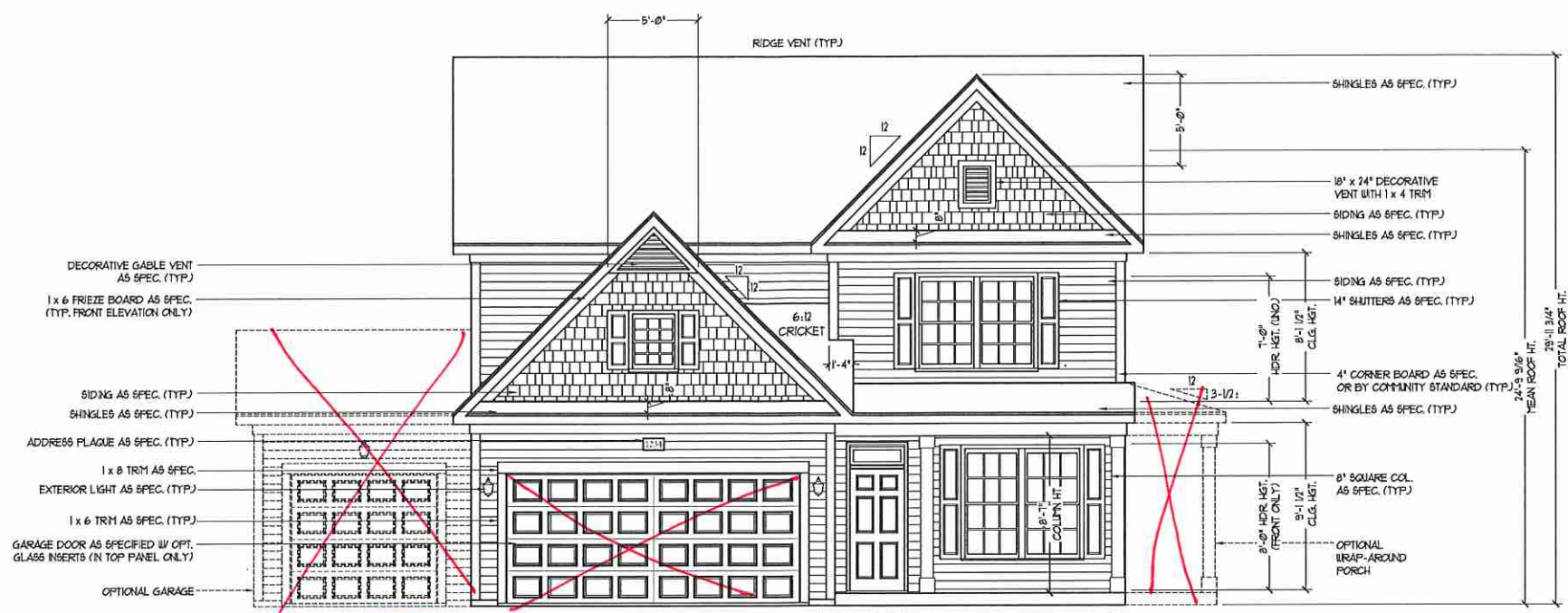


COVER SHEET

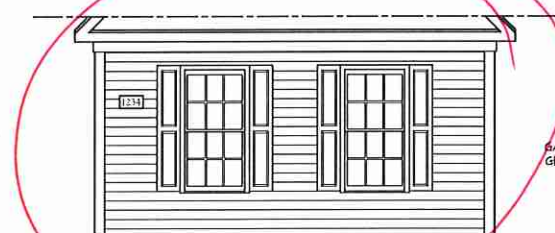
H&H HOMES
JORDAN

DATE: MARCH 15, 2019
REV.: MAY 01, 2020
DRAWN BY:
ENGINEERED BY:
REVIEWED BY:

CS



FRONT ELEVATION-A
SCALE: 1/4" = 1'-0"

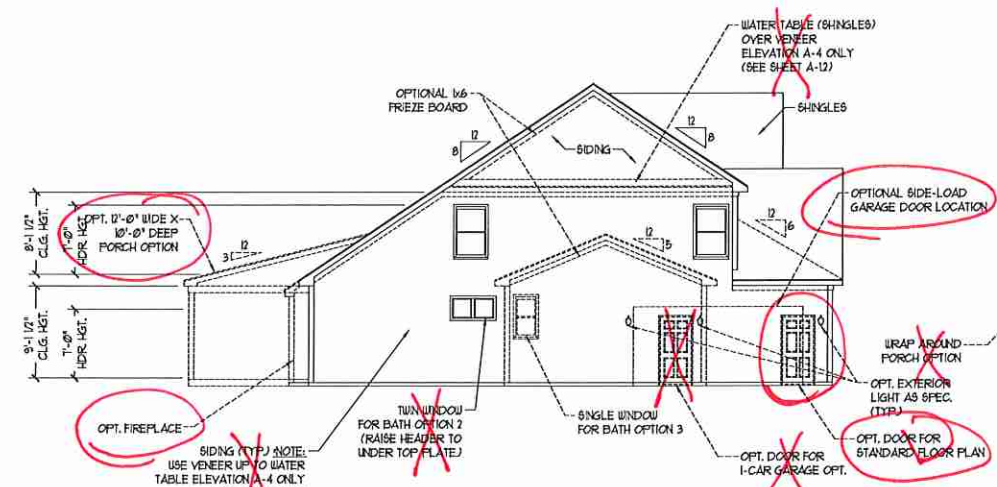


SIDE LOAD GARAGE OPTION
(NOT AVAILABLE WITH OPTIONAL ONE-CAR GARAGE)
SCALE: 1/4" = 1'-0"

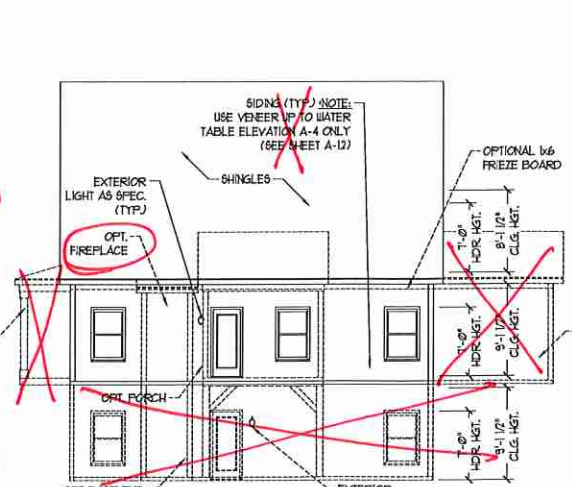


DOUBLE GARAGE DOOR OPTION
SCALE: 1/4" = 1'-0"

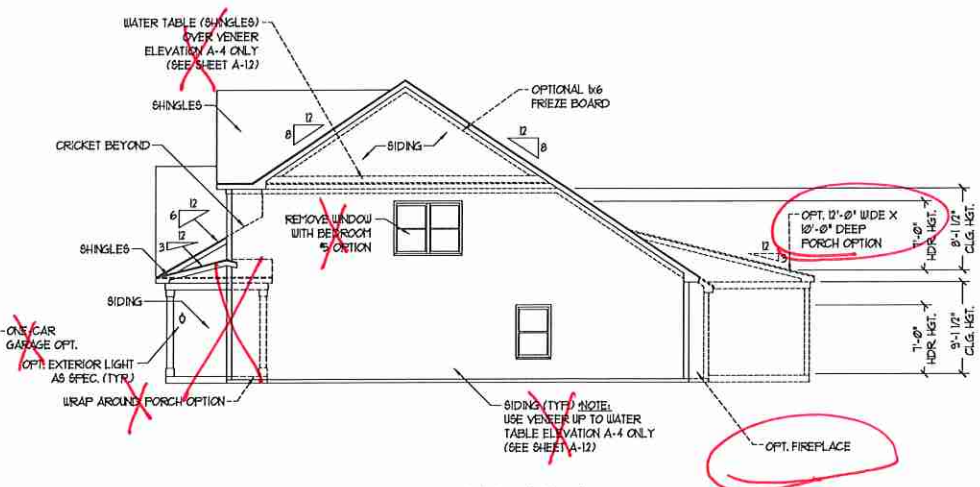
NOTE:
SEE SHEET A-11 FOR BRICK FRONT ELEVATIONS
SEE SHEET A-12 FOR STONE FRONT ELEVATIONS
SEE SHEET A-13 (ALL BRICK) ELEVATIONS



SIDE ELEVATION
SCALE: 1/8" = 1'-0"



REAR ELEVATION
SCALE: 1/8" = 1'-0"



SIDE ELEVATION
SCALE: 1/8" = 1'-0"

J.S. THOMPSON ENGINEERING, INC.
105 WARD AVE., SUITE 104
RALEIGH, NC 27605
PHONE: (919) 285-9910
FAX: (919) 285-9321
N.C. LICENSE NO. C1733



PRICES, PROVISIONS, MATERIALS, FINISHES, OPTIONS, ETC. FOR THIS PLAN ARE SUBJECT TO CHANGE WITHOUT NOTICE. SQUARE FOOTAGE AND DIMENSIONS WILL BE DETERMINED BY THE SITE PLAN AND FLOOR PLAN. FLOOR PLANS AND ELEVATION RENDERINGS ARE ARTS. PROPERTY OF H&H HOMES. ANY USE, REPRODUCTION, ADAPTATION, OR INFRINGEMENT OF THIS PLAN IS STRICTLY PROHIBITED. SEE H&H HOMES SALES CONSULTANT FOR CURRENT DETAILS. COPYRIGHT © 2019 H&H HOMES

H&H HOMES, INC.
JORDAN

DATE: MARCH 15, 2019
REV.: MAY 01, 2020
SCALE: AS NOTED
DRAWN BY:
ENGINEERED BY:
REVIEWED BY:

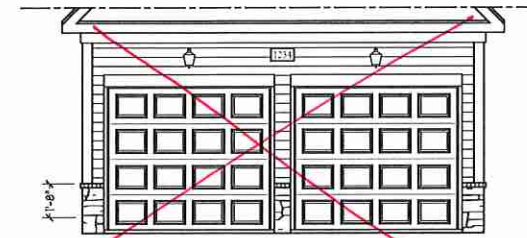
A-1 ELEVATIONS
A-1



FRONT ELEVATION-B-2 (W/ STONE)
SCALE: 1/4" = 1'-0"



SIDE LOAD
GARAGE OPTION
(NOT AVAILABLE WITH OPTIONAL ONE-CAR GARAGE)
SCALE: 1/4" = 1'-0"



DOUBLE GARAGE
DOOR OPTION
SCALE: 1/4" = 1'-0"



FRONT ELEVATION-B-3 (W/ STONE)
SCALE: 1/4" = 1'-0"

BRICK OR STONE
LEDGE AS SPEC.

J.S. THOMPSON
ENGINEERING, INC.
400 WADSWORTH AVENUE, SUITE 100
RALEIGH, NC 27603
PHONE: (919) 780-9914
FAX: (919) 780-9921
N.C. LICENSE NO.: C-1733



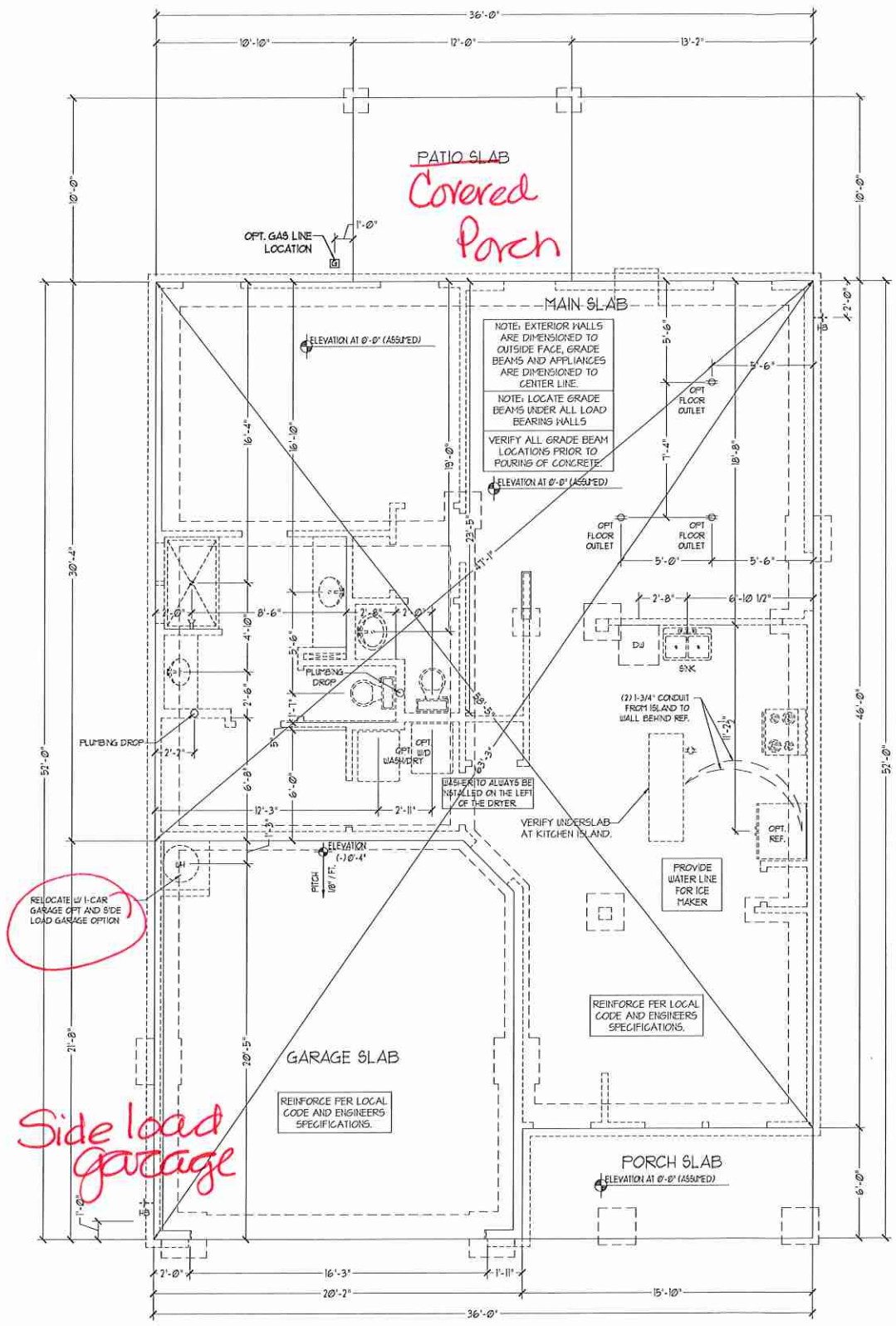
PRICES, PROMOTIONS, INCENTIVES, FEATURES, MATERIALS AND DIMENSIONS ARE SUBJECT TO CHANGE WITHOUT NOTICE. SQUARE FOOTAGE AND DIMENSIONS ARE ESTIMATED AND MAY VARY FACTOR OF 5% FROM THE FINAL CONSTRUCTION. CONSTRUCTION OF THIS HOME WILL BE DETERMINED BY THE SITE PLAN AND PLOT PLAN. FLOOR PLANS AND ELEVATION RENDERINGS ARE ARTIST CONCEPTIONS AND NOT TO BE USED FOR REPRODUCTION, ADAPTATION, OR DISPLAY OF THE PLANS. STRICTLY PROHIBITED. SEE NEW HOME SALES CONSULTANT FOR CURRENT DETAILS. COPYRIGHT © 2019 H&H HOMES

H&H HOMES, INC.
JORDAN

DATE: MARCH 15, 2019
REV.: MAY 01, 2020
SCALE: AS NOTED
DRAWN BY:
ENGINEERED BY:
REVIEWED BY:

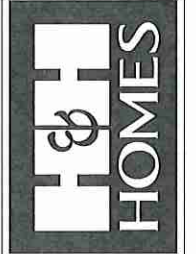
B-2 & B-3
ELEVATIONS
WITH STONE

A-2.1



FOUNDATION PLAN
A-1

J.S. THOMPSON
ENGINEERING, INC.
605 WADE AVE, SUITE 104
RALEIGH, NC 27605
PHONE: 919.780.9919
FAX: 919.780.9921
N.C. LICENSE NO.: C-1733

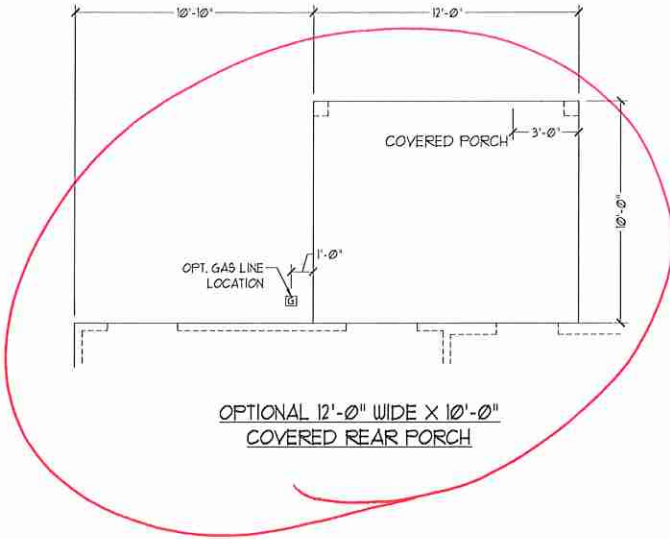


PRICES, PROMOTIONS, INCENTIVES, FEATURES, MATERIALS AND DIMENSIONS ARE SUBJECT TO CHANGE WITHOUT NOTICE. SQUARE FOOTAGE AND DIMENSIONS ARE ESTIMATED AND MAY VARY IN ACTUAL CONSTRUCTION. ACTUAL POSITION OF HOUSE ON LOT, NUMBER OF WALLS, NUMBER OF WINDOWS, FLOOR SLABS AND ELEVATIONS PRESENTED ARE FIRST CONCEPTIONS. FLOOR PLANS ARE THE COPYRIGHTED PROPERTY OF H&H HOMES, INC. USE, REPRODUCTION, ADAPTATION OR DISPLAY OF THE PLANS IS STRICTLY PROHIBITED WITHOUT THE WRITTEN CONSENT OF H&H HOMES, INC. CONSULT WITH CURRENT DETAILS, CDP #R187, C30187/HOMES

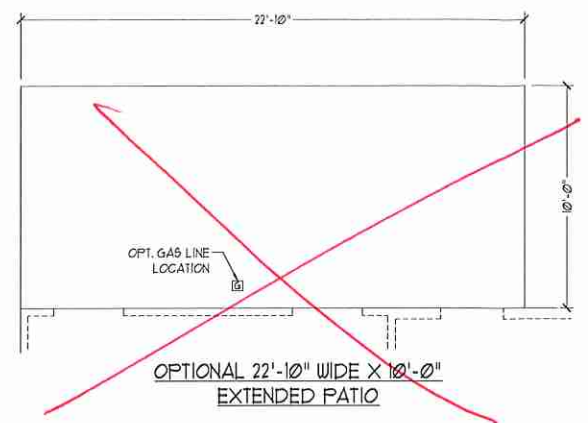
H&H HOMES, INC.
JORDAN

DATE: MARCH 15, 2019
REV.: MAY 01, 2020
SCALE: 1/4" = 1'-0"
DRAWN BY:
ENGINEERED BY:
REVIEWED BY:

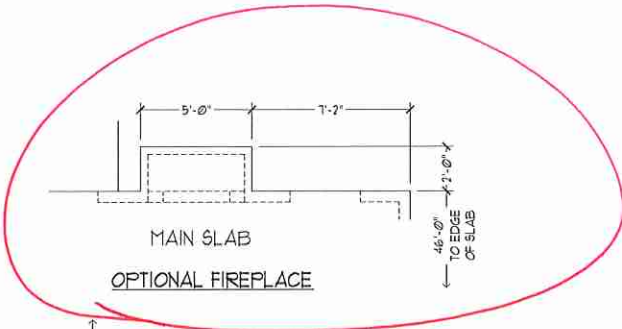
SLAB INTERFACE PLAN
A-4



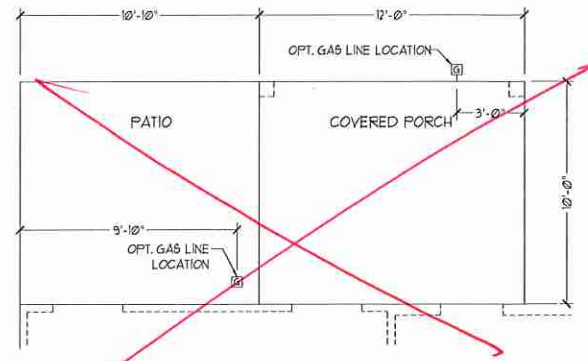
OPTIONAL 12'-0" WIDE X 10'-0" COVERED REAR PORCH



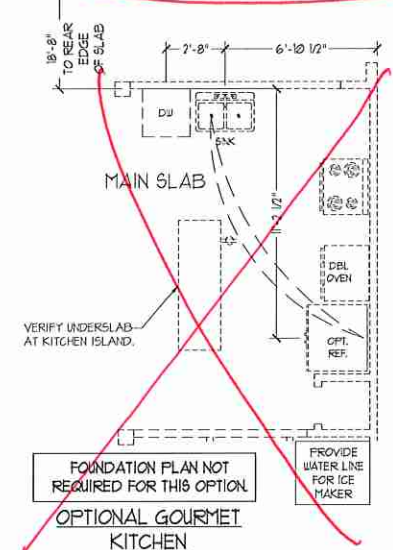
OPTIONAL 22'-10" WIDE X 10'-0" EXTENDED PATIO



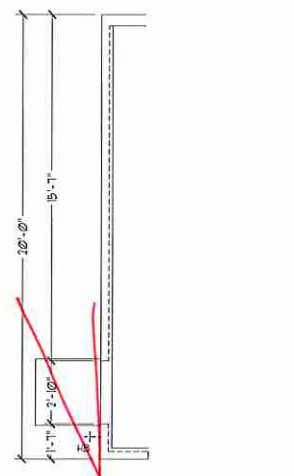
MAIN SLAB
OPTIONAL FIREPLACE



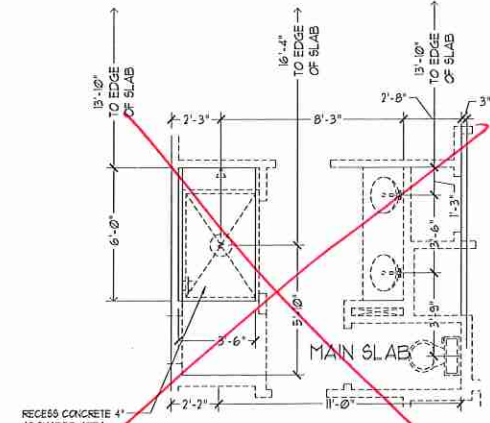
OPTIONAL PATIO w/ COVERED PORCH



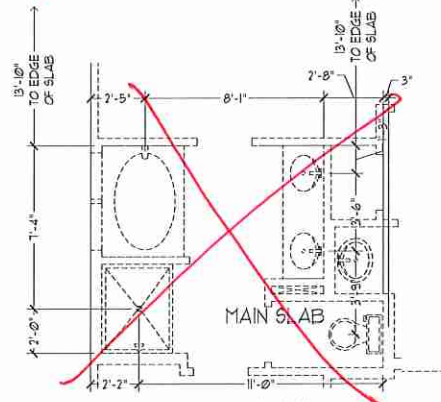
FOUNDATION PLAN NOT REQUIRED FOR THIS OPTION
OPTIONAL GOURMET KITCHEN



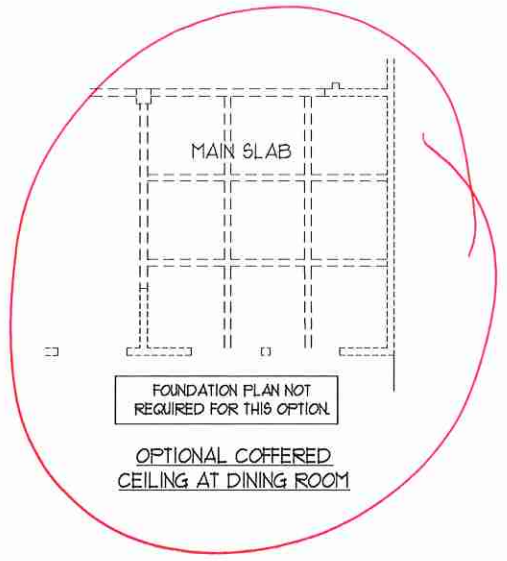
OPTIONAL SERVICE DOOR AT 1-CAR GARAGE



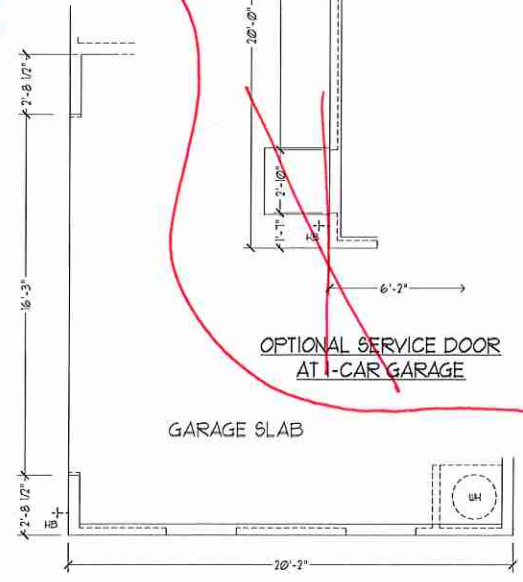
OPTIONAL OWNER'S BATH 3



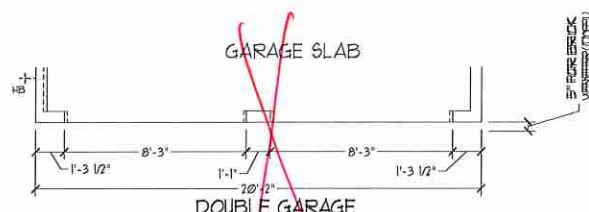
OPTIONAL OWNER'S BATH 2



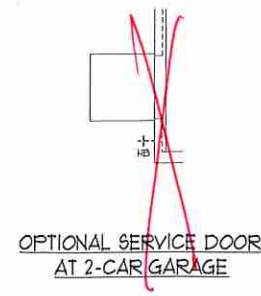
FOUNDATION PLAN NOT REQUIRED FOR THIS OPTION
OPTIONAL COVERED CEILING AT DINING ROOM



SIDE-LOAD GARAGE OPTION
(NOT AVAILABLE WITH OPTIONAL ONE-CAR GARAGE)



DOUBLE GARAGE DOOR OPTION



OPTIONAL SERVICE DOOR AT 2-CAR GARAGE

J.S. THOMPSON
ENGINEERING, INC.
600 WADE AVE., SUITE 104
RALEIGH, NC 27605
PHONE: (919) 788-9149
FAX: (919) 788-9921
N.C. LICENSE NO. C-1733

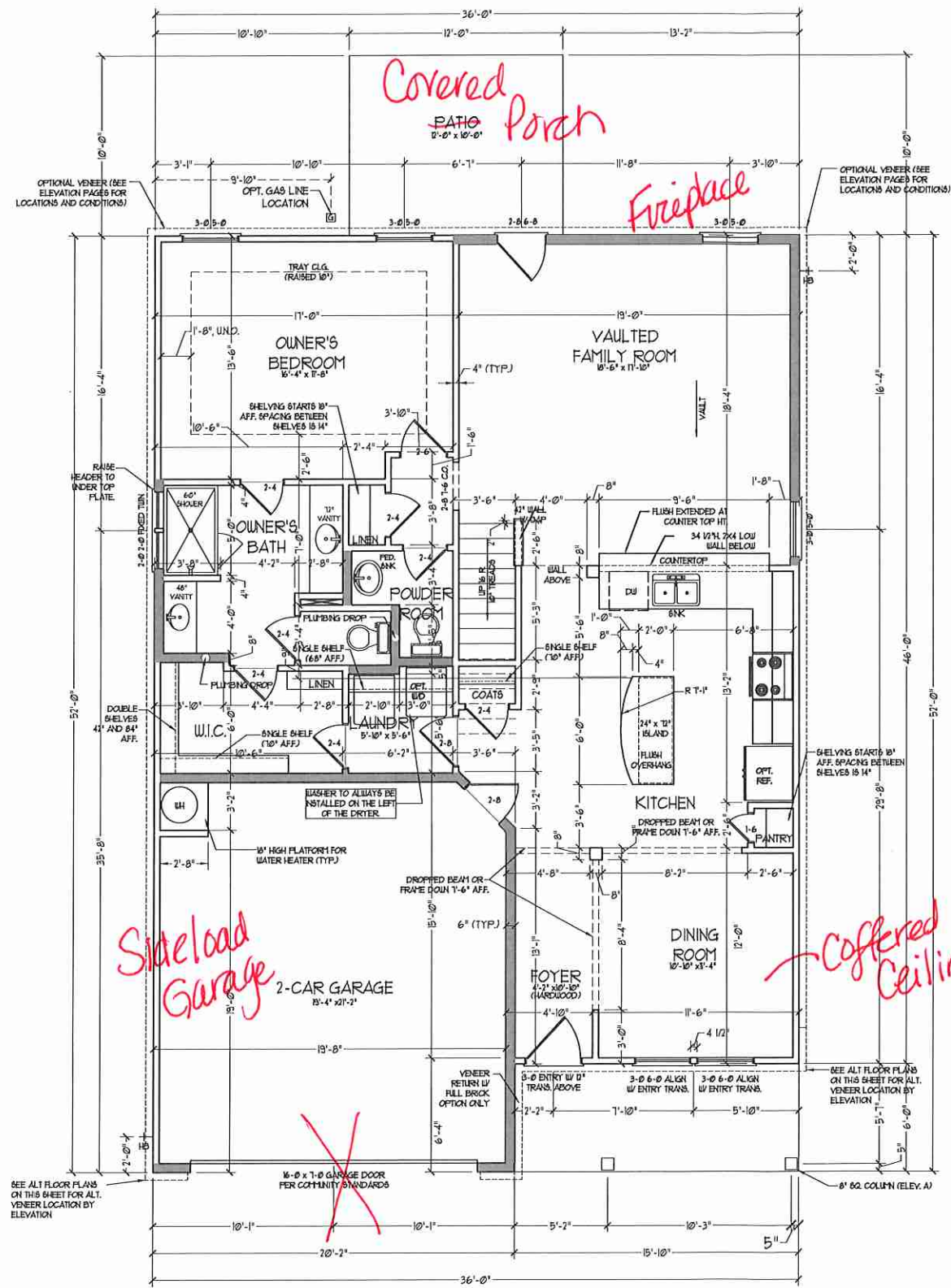


PLEASE PROVIDE US WITH YOUR FEEDBACK. WE WILL APPRECIATE YOUR COMMENTS. ALL DIMENSIONS ARE TO FACE UNLESS OTHERWISE NOTED. MATERIALS AND DIMENSIONS ARE SUBJECT TO CHANGE WITHOUT NOTICE. SQUARE FOOTAGE AND DIMENSIONS ARE ESTIMATED AND MAY VARY IN ACTUAL CONSTRUCTION. ACTUAL LOCATION OF HOUSE ON LOT, FLOOR PLANS AND ELEVATION RENDERINGS ARE ARTIST CONCEPTIONS. FLOOR PLANS ARE THE COPYRIGHTED PROPERTY OF H&H HOMES. ANY USE, REPRODUCTION, ADAPTATION OR DISPLAY OF THE PLANS IS STRICTLY PROHIBITED. © 2019 H&H HOMES

H&H HOMES, INC.
JORDAN

DATE: MARCH 15, 2019
REV.: MAY 01, 2020
SCALE: 1/4" = 1'-0"
DRAWN BY:
ENGINEERED BY:
REVIEWED BY:

SLAB INTERFACE OPTIONS
A-4.1



FIRST FLOOR PLAN
(A-I, B-I, AND C-I)

SEE PARTIAL FLOOR PLANS ON SHEET A-52 FOR CHANGES TO THE EXTERIOR VENEER FOR ALL ELEVATIONS.

SQUARE FOOTAGE	
1st FLOOR:	1381 SQ. FT.
2nd FLOOR:	1051 SQ. FT.
TOTAL:	2,432 SQ. FT.
GARAGE:	475 SQ. FT.
FRONT PORCH:	95 SQ. FT.
STD. REAR PATIO:	100 SQ. FT.
1st FLOOR OPTIONS	
OPT. FIREPLACE:	10 SQ. FT.
2nd FLOOR OPTIONS	
OPT. WINDOW BOX AT BEDROOM 2:	9 SQ. FT.
UNHEATED OPTIONS	
OPT. BASEMENT:	1710 SQ. FT.
OPT. 1-CAR GARAGE:	240 SQ. FT.
OPT. REAR COVERED PORCH:	100 SQ. FT.
OPT. 12'-0" X 10'-0" PATIO:	100 SQ. FT.

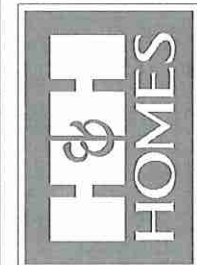
SQUARE FOOTAGE (W/ FULL BRICK)	
1st FLOOR:	1469 SQ. FT.
2nd FLOOR:	1094 SQ. FT.
TOTAL:	2,563 SQ. FT.
GARAGE:	445 SQ. FT.
FRONT PORCH:	95 SQ. FT.
STD. REAR PATIO:	100 SQ. FT.
1st FLOOR OPTIONS	
OPT. FIREPLACE:	14 SQ. FT.
2nd FLOOR OPTIONS	
WINDOW BOX AT BEDROOM 2 (ELEV. C ONLY):	9 SQ. FT.
UNHEATED OPTIONS	
OPT. BASEMENT:	1710 SQ. FT.
OPT. 1-CAR GARAGE:	259 SQ. FT.
OPT. REAR COVERED PORCH:	100 SQ. FT.
OPT. 12'-0" X 10'-0" PATIO:	100 SQ. FT.

NOTES: ALL EXTERIOR WALLS AND ATTIC WALLS ARE TO BE 2 x 4 @ 16" O.C. (UND.) ALL INTERIOR LOAD BEARING WALLS ARE TO BE 2 x 4 @ 16" O.C. (UND) AND NON-LOAD BEARING INTERIOR WALLS ARE TO BE 2 x 4 @ 24" O.C. (UND).

2x6 WALL

1 SHADED WALLS ARE TO BE 2 x 6 @ 16" O.C. (LOAD BEARING) OR 2 x 6 @ 24" O.C. (NON-LOAD BEARING) REGARDLESS OF EXTERIOR WALL CONDITION.

J.S. THOMPSON
ENGINEERING, INC.
600 WADE AVE., SUITE 104
RALEIGH, NC 27605
PHONE: (919) 885-9119
FAX: (919) 789-9211
N.C. LICENSE NO. C-1133

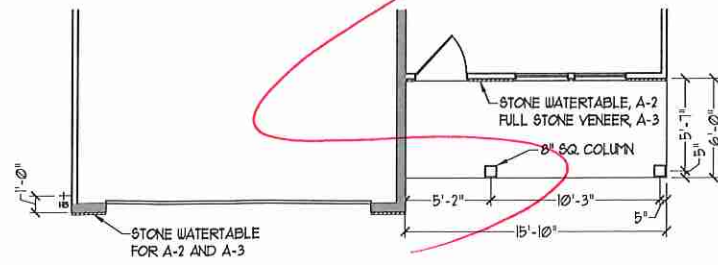
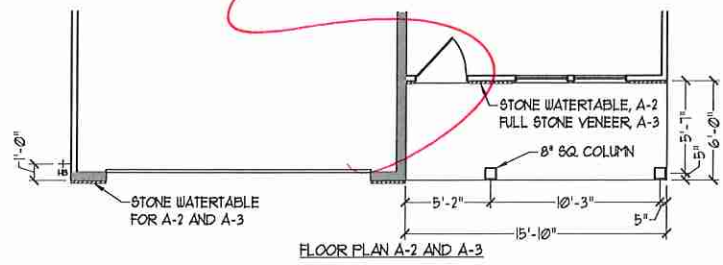
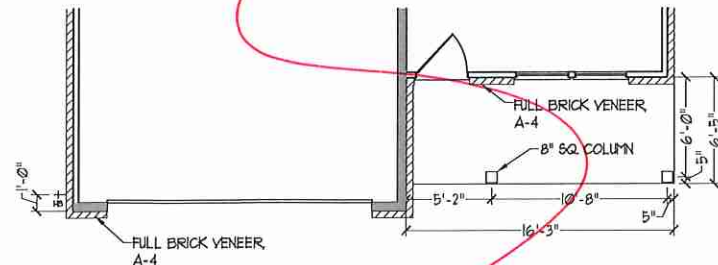
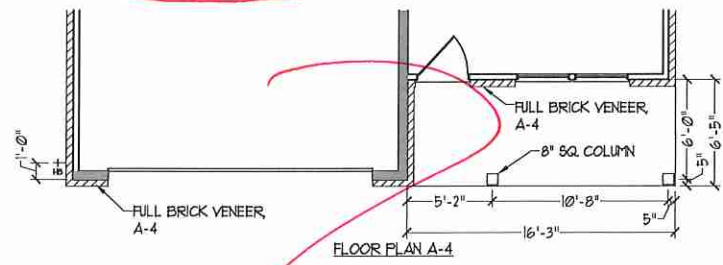
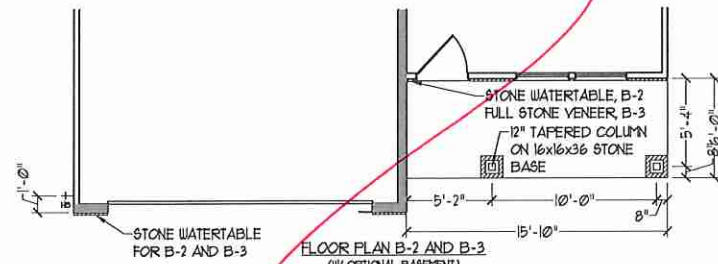
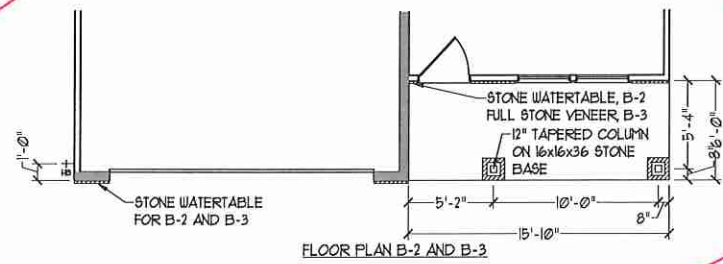
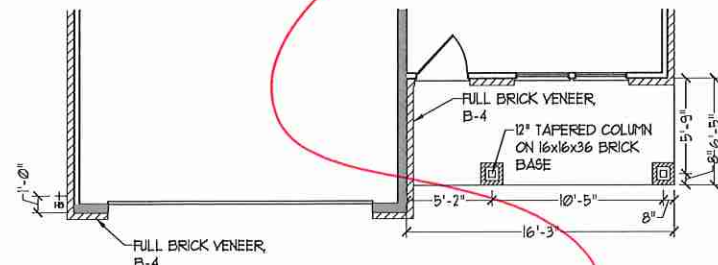
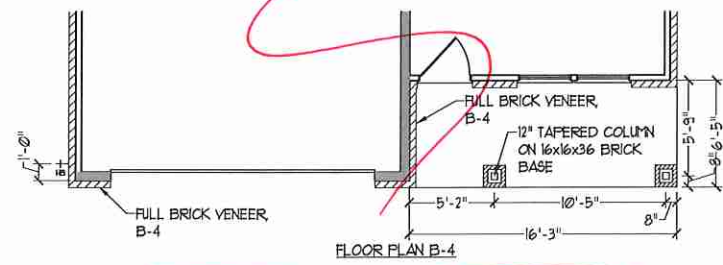
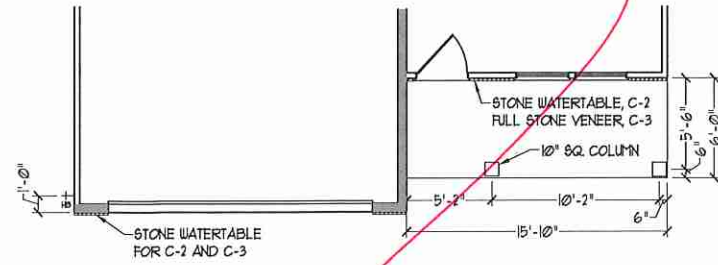
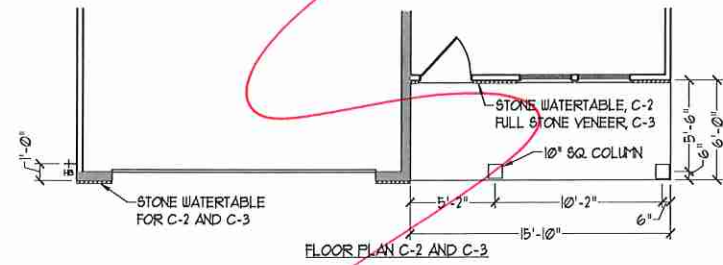
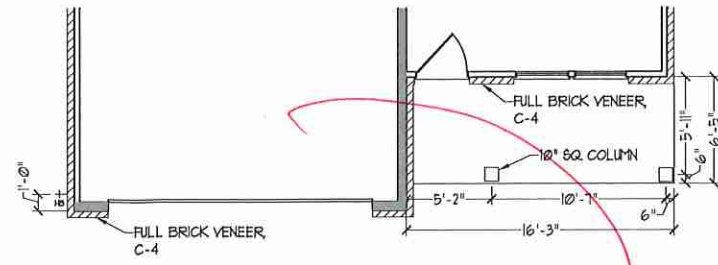
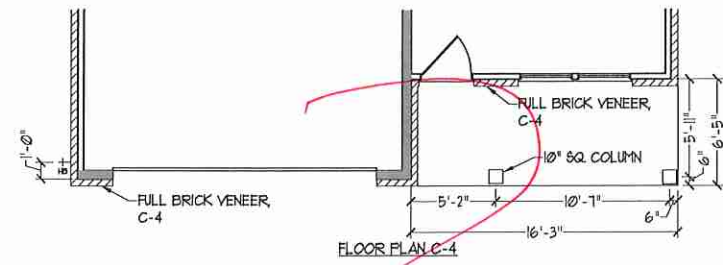


PRICES, PROMOTIONS, INCENTIVES, FEATURES, MATERIALS AND DIMENSIONS ARE SUBJECT TO CHANGE WITHOUT NOTICE. SQUARE FOOTAGE AND DIMENSIONS ARE ESTIMATED AND MAY VARY IN ACTUAL CONSTRUCTION. ACTUAL POSITION OF HOUSE ON LOT, FLOOR PLANS AND ELEVATION DIMENSIONS ARE ARTIST CONCEPTIONS. FLOOR PLANS ARE THE COPYRIGHTED PROPERTY OF H&H HOMIES. ANY USE, REPRODUCTION, ADAPTATION, OR DISPLAY OF THE PLANS IS STRICTLY PROHIBITED. © 2019 H&H HOMIES

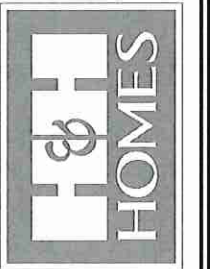
H&H HOMIES, INC.
JORDAN

DATE: MARCH 15, 2019
REV.: MAY 01, 2020
SCALE: 1/4" = 1'-0"
DRAWN BY:
ENGINEERED BY:
REVIEWED BY:

FIRST FLOOR PLAN
A-6



J.S. THOMPSON
ENGINEERING, INC.
606 WADE AVE, SUITE 104
RALEIGH, NC 27605
PHONE: (919) 789-9118
FAX: (919) 789-9221
N.C. LICENSE NO.: C4133



PRICES, PROMOTIONS, INCENTIVES, FEATURES, OPTIONS, FLOOR PLANS, ELEVATIONS, DESIGN, MATERIALS AND DIMENSIONS ARE SUBJECT TO CHANGE WITHOUT NOTICE. SQUARE FOOTAGE AND DIMENSIONS ARE ESTIMATED AND MAY VARY IN ACTUAL CONSTRUCTION. LOT DIMENSIONS AND LOT AREA WILL BE DETERMINED BY THE SITE PLAN AND PLOT PLAN. FLOOR PLANS AND ELEVATION RENDERINGS ARE ARTIST CONCEPTIONS. FLOOR PLANS ARE THE COPYRIGHTED PROPERTY OF H&H HOMES, INC. REPRODUCTION, REVISION, OR ALTERATION OF ANY KIND IS PROHIBITED. SEE NEW HOME SALES CONSULTANT FOR CURRENT DETAILS. COPYRIGHT © 2019 H&H HOMES

H&H HOMES, INC.
JORDAN

DATE: MARCH 15, 2019

REV.: MAY 01, 2020

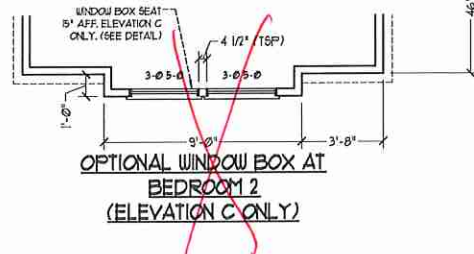
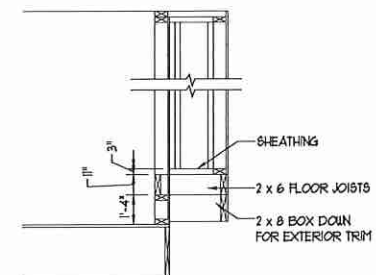
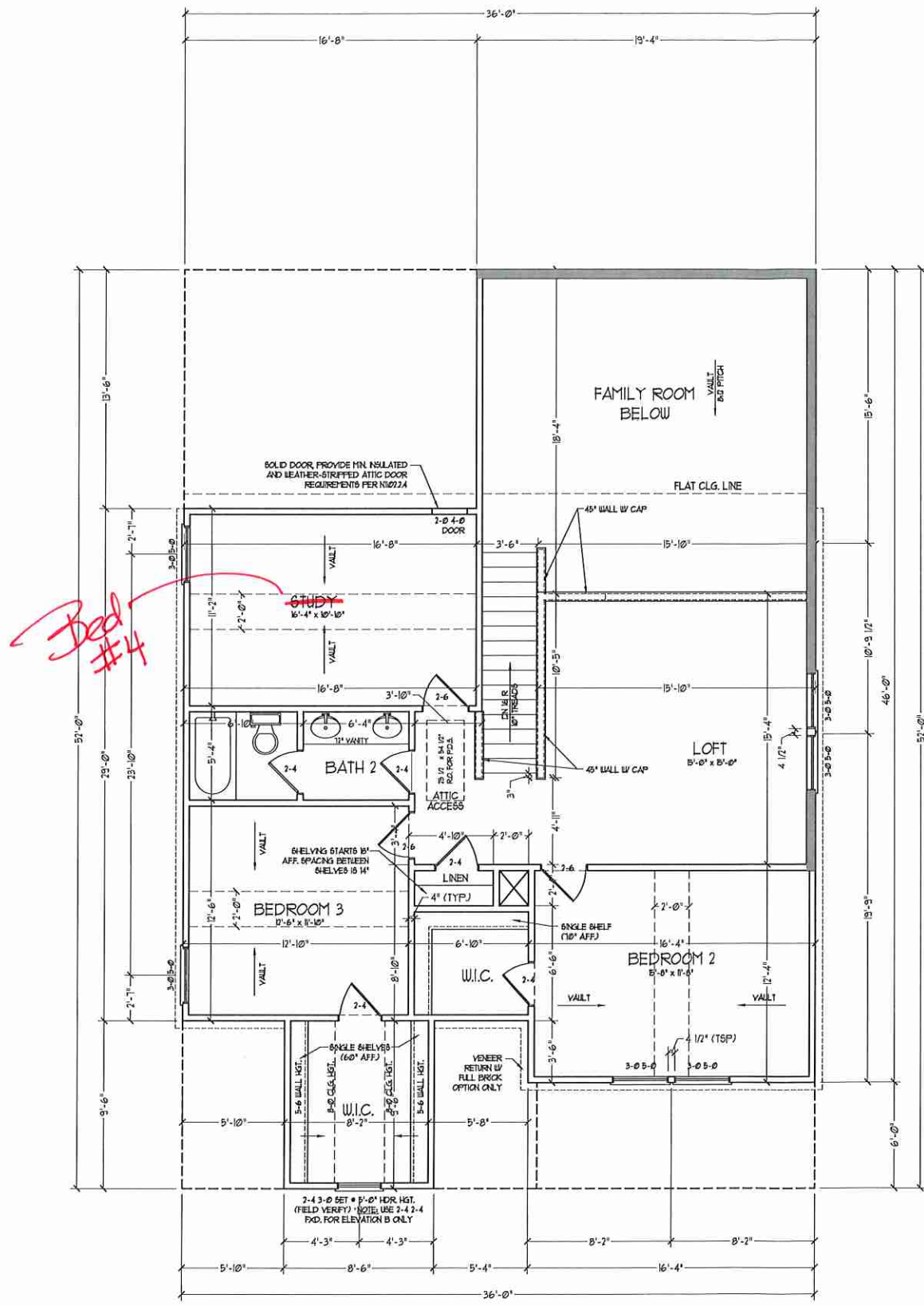
SCALE: 1/4" = 1'-0"

DRAWN BY:

ENGINEERED BY:

REVIEWED BY:

FIRST FLOOR
PARTIAL PLANS
W/ & W/O
BASEMENT
A-6.3



NOTE: ALL EXTERIOR WALLS AND ATTIC WALLS ARE TO BE 2 x 4 @ 16" O.C. (UND). ALL INTERIOR LOAD BEARING WALLS ARE TO BE 2 x 4 @ 16" O.C. (UND) AND NON-LOAD BEARING INTERIOR WALLS ARE TO BE 2 x 4 @ 24" O.C. (UND)

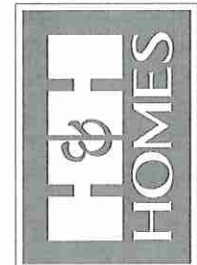
2x6 WALL

* SHADED WALLS ARE TO BE 2 x 6 @ 16" O.C. (LOAD BEARING) OR 2 x 6 @ 24" O.C. (NON-LOAD BEARING) REGARDLESS OF EXTERIOR WALL CONDITION

* PROVIDE MINIMUM INSULATION IN CEILINGS AND WALLS PER SECTION N 1102.1

SEE PARTIAL FLOOR PLAN ON SHEET A-6.2 FOR CHANGES TO THE EXTERIOR VENEER FOR ALL ELEVATIONS

J.S. THOMPSON ENGINEERING, INC.
 606 WADE AVE., SUITE 104
 RALEIGH, NC 27605
 PHONE: (919) 788-9119
 FAX: (919) 788-9211
 N.C. LICENSE NO. C1133

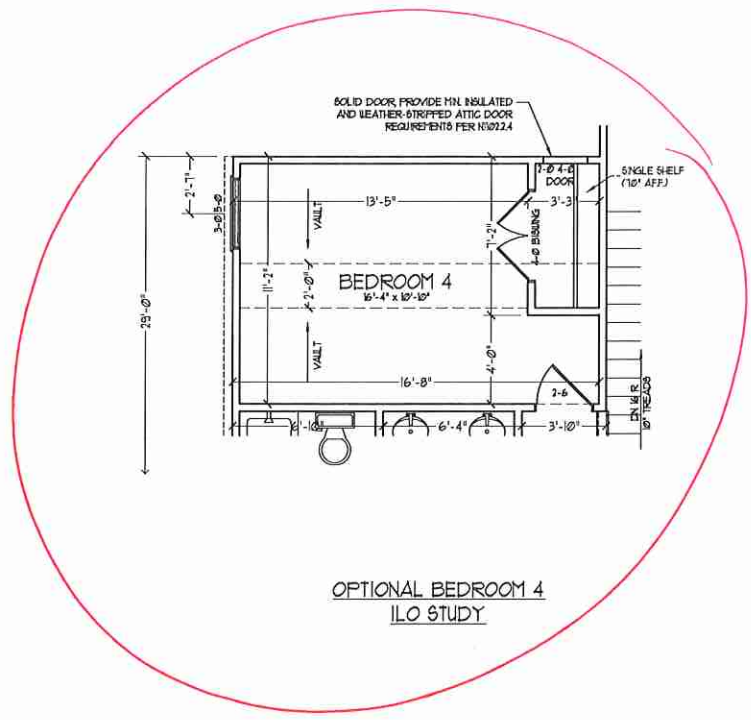


THESE PROMOTIONAL INCENTIVES, FEATURES, OPTIONS, FLOOR PLANS, ELEVATIONS, FINISHES, MATERIALS AND DIMENSIONS ARE SUBJECT TO CHANGE WITHOUT NOTICE. SQUARE FOOTAGE AND DIMENSIONS ARE ESTIMATED AND MAY VARY IN ACTUAL CONSTRUCTION. ALL FINISHES, MATERIALS, FLOOR PLANS AND ELEVATION FINISHES ARE ARTIST CONCEPTIONS. FLOOR PLANS ARE THE COPYRIGHTED PROPERTY OF H&H HOMES, INC. USE, REPRODUCTION, OR ALTERATION OF ANY PART OF THESE DRAWINGS IS PROHIBITED. SEE H&H HOMES SALES CENTER FOR CURRENT DETAILS. COPYRIGHT © 2019 H&H HOMES

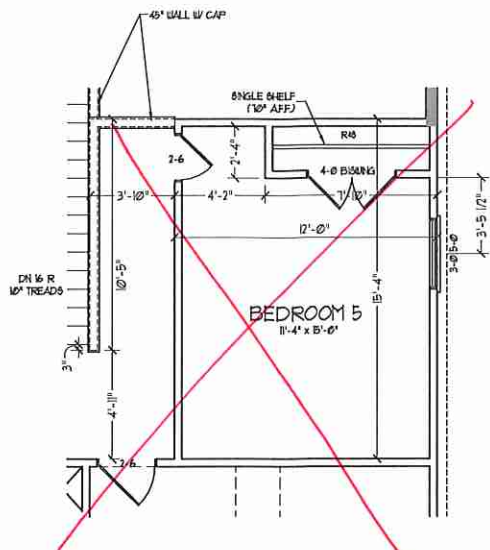
H&H HOMES, INC.
 JORDAN

DATE: MARCH 15, 2019
 REV.: MAY 01, 2020
 SCALE: 1/4" = 1'-0"
 DRAWN BY:
 ENGINEERED BY:
 REVIEWED BY:

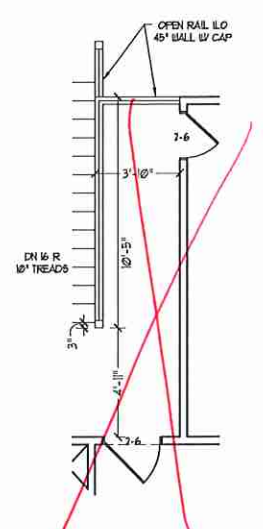
SECOND FLOOR PLAN
 A-7



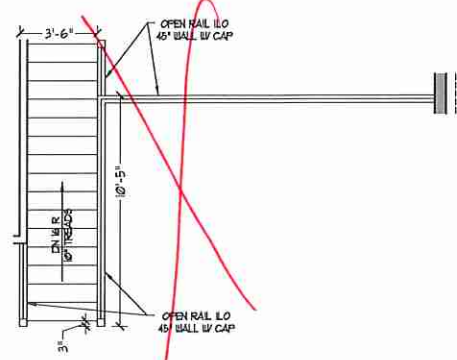
OPTIONAL BEDROOM 4
ILO STUDY



OPTIONAL BEDROOM 5
ILO LOFT

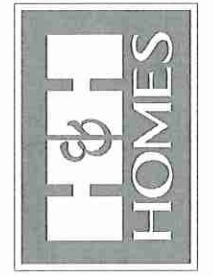


OPTIONAL OPEN RAIL ILO
45" WALL W/ CAP W/
BEDROOM 5 ILO LOFT



OPEN RAIL ILO 45" WALL
W/ CAP

J.S. THOMPSON
ENGINEERING, INC.
606 WADE AVE., SUITE 104
RALEIGH, NC 27605
PHONE: (919) 780-9150
FAX: (919) 780-9221
N.C. LICENSE NO. C4133

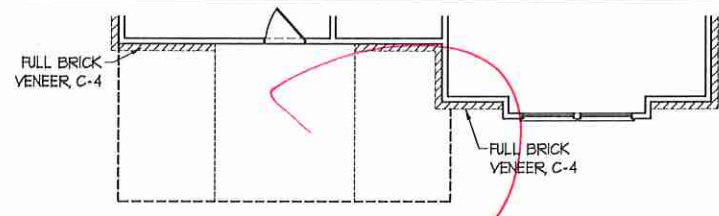


PLEASE PROMPTLY NOTIFY US OF ANY CHANGES TO THESE PROMOTIONS, INCENTIVES, FEATURES, OPTIONS, FLOOR PLANS, ELEVATIONS, DESIGNS, MATERIALS AND DIMENSIONS ARE SUBJECT TO CHANGE WITHOUT NOTICE. SQUARE FOOTAGE AND DIMENSIONS ARE ESTIMATED AND MAY VARY IN ACTUAL CONSTRUCTION. ALL DIMENSIONS ARE TO FACE UNLESS OTHERWISE NOTED. ALL DIMENSIONS WILL BE DETERMINED BY THE SITE PLAN AND PLOT PLAN. FLOOR PLANS AND ELEVATION DRAWINGS ARE ARTIST CONCEPTIONS. FLOOR PLANS ARE THE COPYRIGHTED PROPERTY OF H&H HOMES, INC. USE, REPRODUCTION, OR ALTERATION OF THESE DRAWINGS IS STRICTLY PROHIBITED. SEE NEW HOME SALES OFFICE FOR CURRENT DETAILS. COPYRIGHT © 2019 H&H HOMES

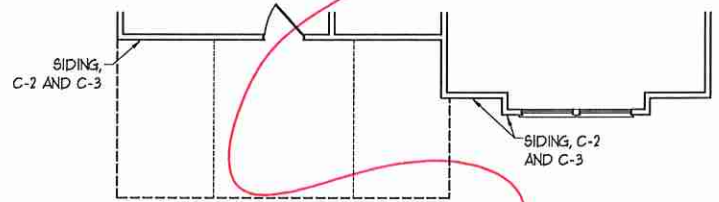
H&H HOMES, INC.
JORDAN

DATE: MARCH 15, 2019
REV.: MAY 01, 2020
SCALE: 1/4"=1'-0"
DRAWN BY:
ENGINEERED BY:
REVIEWED BY:

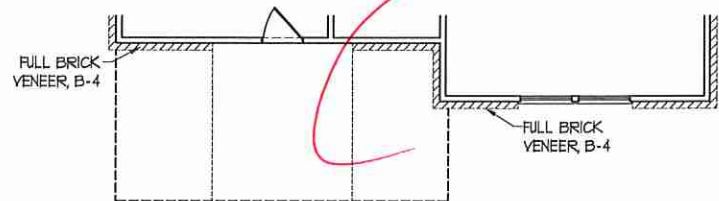
SECOND FLOOR
OPTIONS
A-7.1



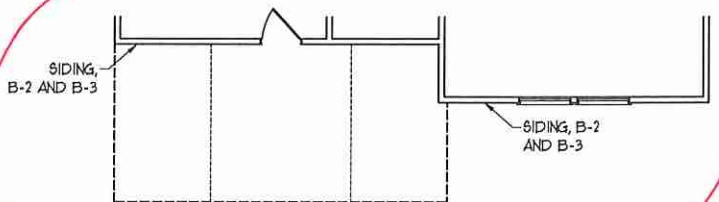
FLOOR PLAN C-4



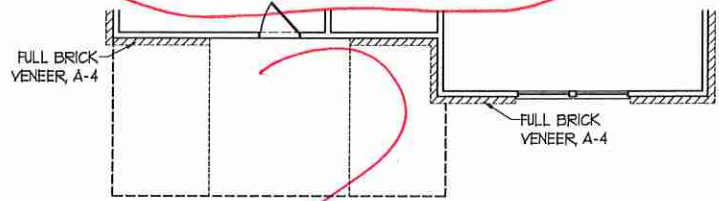
FLOOR PLAN C-2 AND C-3



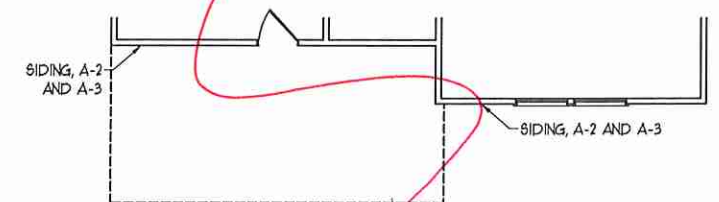
FLOOR PLAN B-4



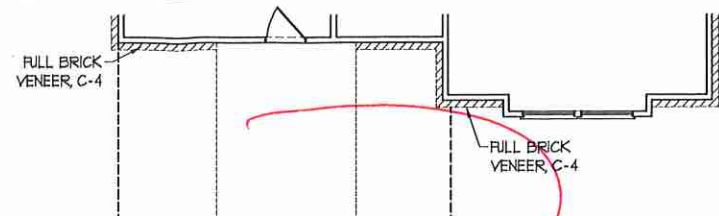
FLOOR PLAN B-2 AND B-3



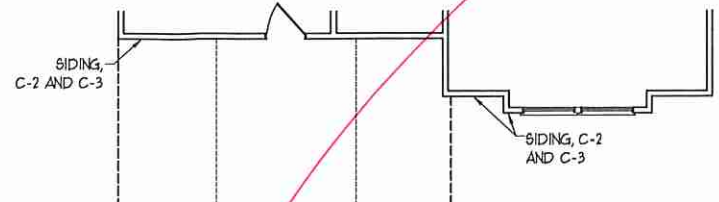
FLOOR PLAN A-4



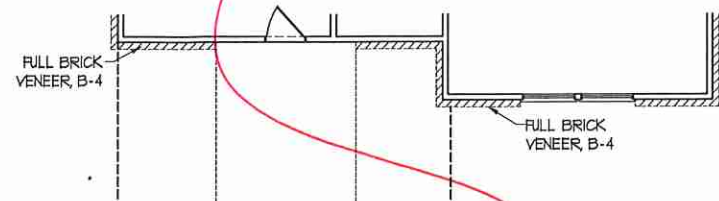
FLOOR PLAN A-2 AND A-3



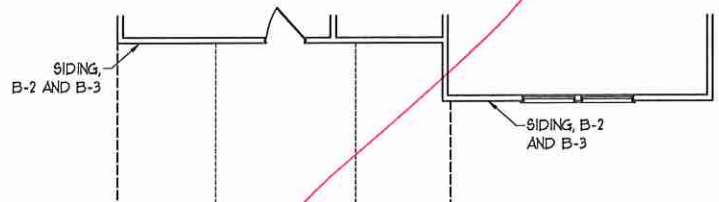
FLOOR PLAN C-4
(W/ OPTIONAL BASEMENT)



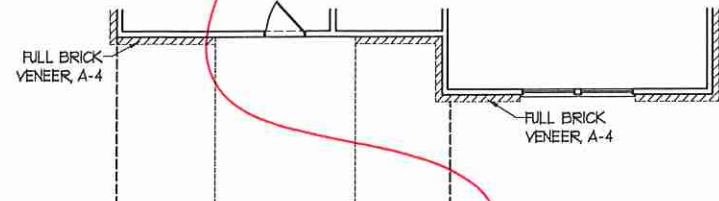
FLOOR PLAN C-2 AND C-3
(W/ OPTIONAL BASEMENT)



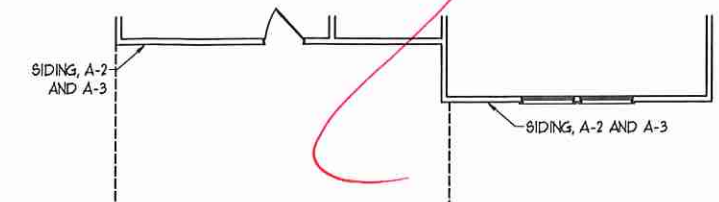
FLOOR PLAN B-4
(W/ OPTIONAL BASEMENT)



FLOOR PLAN B-2 AND B-3
(W/ OPTIONAL BASEMENT)

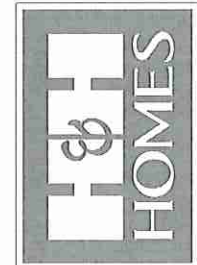


FLOOR PLAN A-4
(W/ OPTIONAL BASEMENT)



FLOOR PLAN A-2 AND A-3
(W/ OPTIONAL BASEMENT)

**J.S. THOMPSON
ENGINEERING, INC.**
606 WALDE AVE., SUITE 104
RALEIGH, NC 27605
PHONE: (919) 780-9249
FAX: (919) 780-9221
N.C. LICENSE NO.: C4133

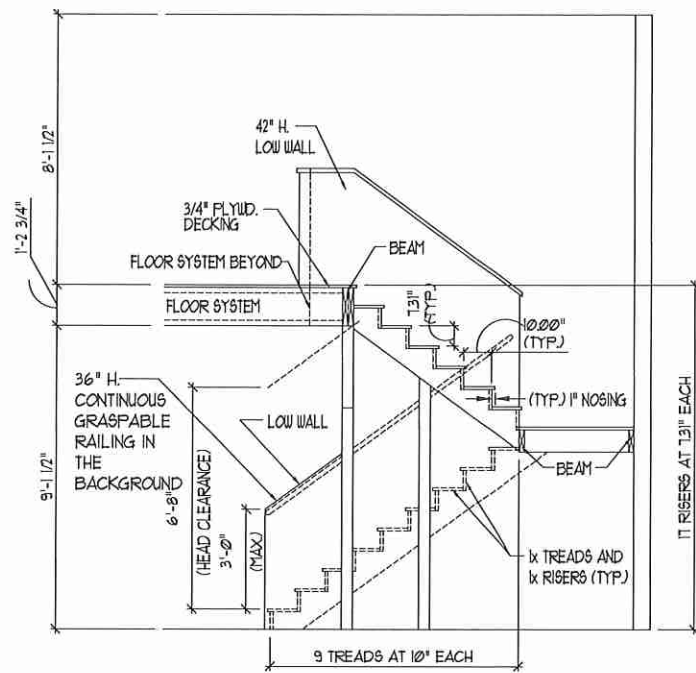


PLEASE PROMPTLY IDENTIFY THESE FEATURES. OPTIONS, FINISHES, ELEVATIONS, MATERIALS AND DIMENSIONS ARE SUBJECT TO CHANGE WITHOUT NOTICE. SQUARE FOOTAGE AND DIMENSIONS ARE ESTIMATED AND MAY VARY IN ACTUAL CONSTRUCTION. DO NOT USE THESE PLANS FOR ANY OTHER PROJECTS. ALL RIGHTS ARE RESERVED. FLOOR PLANS AND ELEVATION DRAWINGS ARE ARTIST CONCEPTIONS. ANY USE, REPRODUCTION, ADAPTATION OR DISPLAY OF THESE PLANS IS STRICTLY PROHIBITED. © 2019 H&H HOMES. ALL RIGHTS RESERVED.

H&H HOMES, INC.
JORDAN

DATE: MARCH 15, 2019
REV.: MAY 01, 2020
SCALE: 1/4"=1'-0"
DRAWN BY:
ENGINEERED BY:
REVIEWED BY:

SECOND FLOOR
PARTIAL PLANS
A-7.2



TYPICAL STAIR DETAIL
(NTS)

STAIR NOTES:

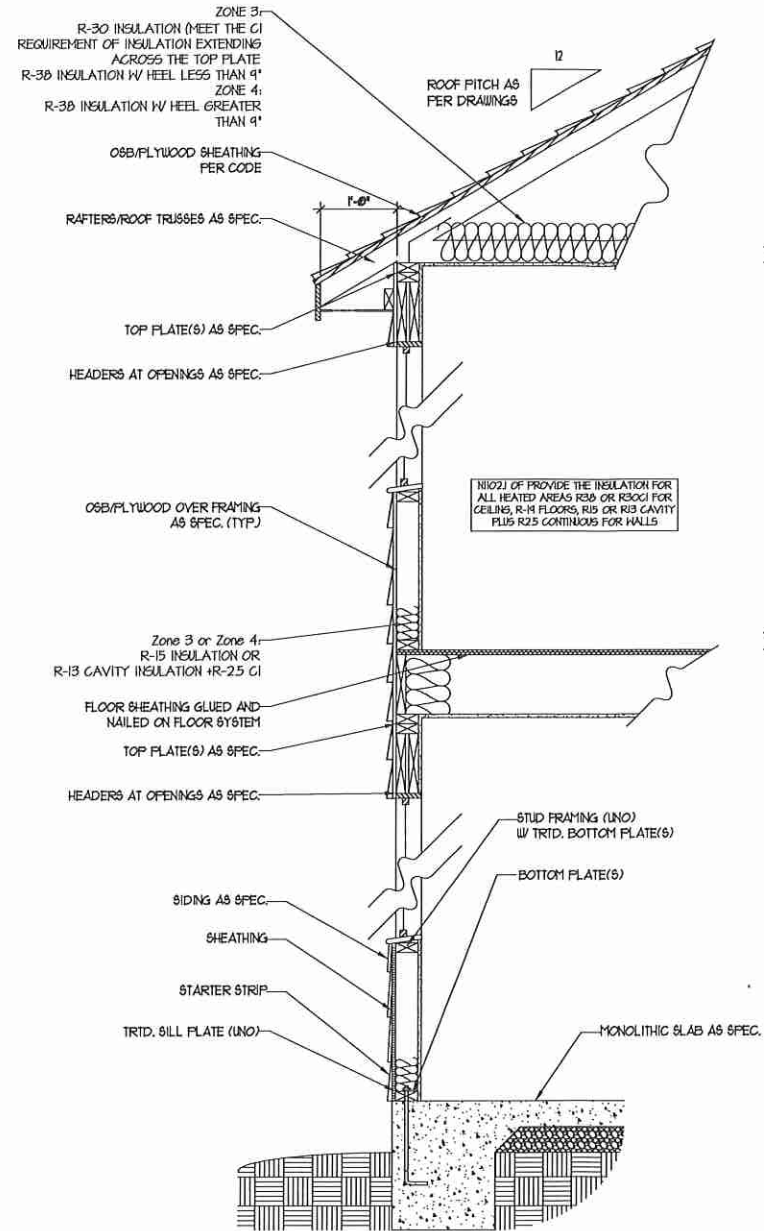
RAILING
BALUSTERS SHALL BE SPACED SO THAT A 4" SPHERE CANNOT PASS THROUGH.

THE TRIANGULAR OPENINGS FORMED BY THE RISER TREAD AND BOTTOM RAIL OF A GUARD AT THE OPEN SIDE OF A STAIRWAY ARE PERMITTED TO BE A SUCH A SIZE THAT A SPHERE OF 6 INCHES CANNOT PASS THROUGH.

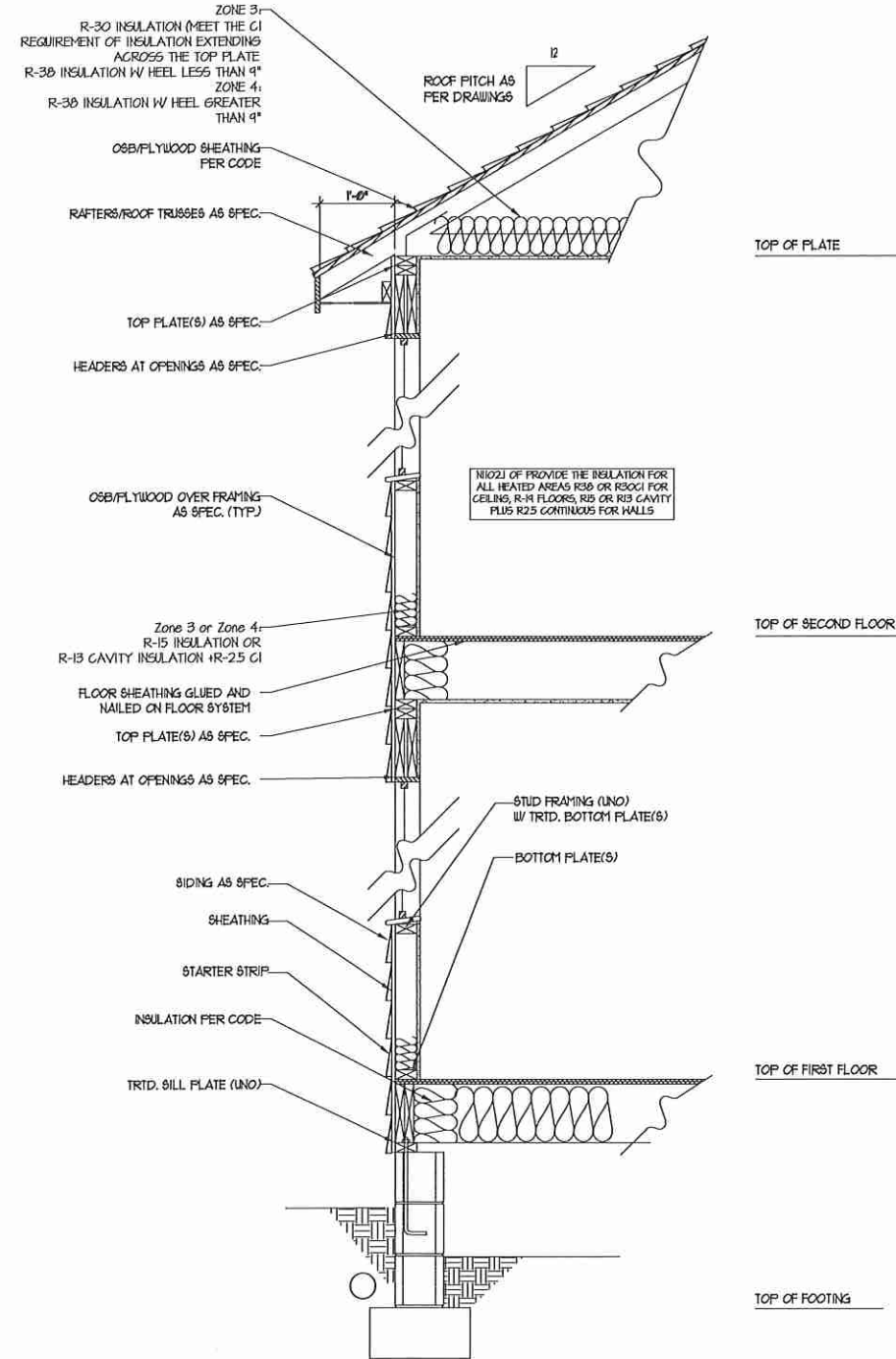
OPENINGS FOR REQUIRED GUARDS ON THE SIDES OF STAIR TREADS SHALL NOT ALLOW A SPHERE 4 3/8 INCHES TO PASS THROUGH.

HANDRAILS:
HANDRAILS FOR STAIRWAYS SHALL BE CONTINUOUS FOR THE FULL LENGTH OF THE FLIGHT, FROM A POINT DIRECTLY ABOVE THE TOP RISER OF THE FLIGHT TO A POINT DIRECTLY ABOVE THE LOWEST RISER. HANDRAIL ENDS SHALL BE RETURNED OR SHALL TERMINATE IN NEEL POSTS OR SAFETY TERMINALS. HANDRAILS ADJACENT TO A WALL SHALL HAVE A SPACE OF NOT LESS THAN 1-1/2 INCH BETWEEN THE WALL AND HANDRAILS.

CONTINUOUS GRASPABLE HANDRAIL MUST MEET TYPE ONE OR TYPE TWO CRITERIA

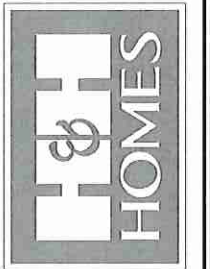


WALL SECTION W/ SLAB
W/ STD. SIDING SHOWN (NTS)



WALL SECTION W/ CRAWL SPACE
W/ STD. SIDING SHOWN (NTS)

**J.S. THOMPSON
ENGINEERING, INC.**
608 WADE AVE., SUITE 104
RALEIGH, NC 27605
PHONE: (919) 889-9149
FAX: (919) 889-9211
N.C. LICENSE NO. C-1133

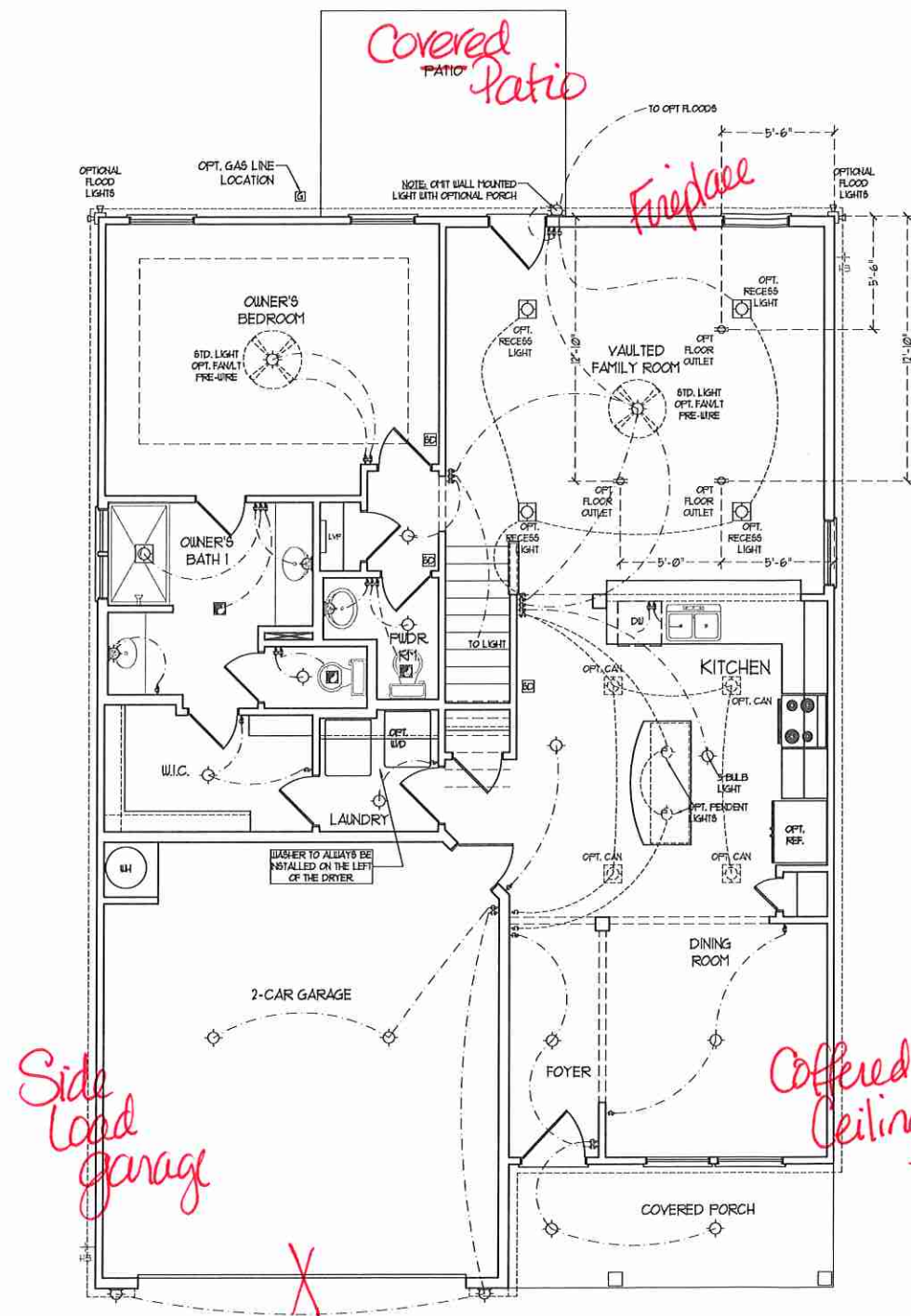


PRICES, PRODUCTIONS, INCENTIVES, FEATURES, MATERIALS AND DIMENSIONS ARE SUBJECT TO CHANGE WITHOUT NOTICE. SQUARE FOOTAGE AND DIMENSIONS ARE ESTIMATED AND MAY VARY IN ACTUAL CONSTRUCTION. ACTUAL POSITION OF HOUSE ON LOT, FLOOR PLANS AND ELEVATION MEMBERSHIPS ARE ARTIST CONCEPTIONS. FLOOR PLANS ARE THE COPYRIGHTED PROPERTY OF H&H HOMES. ANY USE, REPRODUCTION, ADAPTATION, OR DISPLAY OF THE PLANS IS STRICTLY PROHIBITED. © 2019 H&H HOMES. CURRENT DETAILS. COPYRIGHT. C-2019 H&H HOMES.

H&H HOMES, INC.
JORDAN

DATE: MARCH 15, 2019
REV.: MAY 01, 2020
SCALE: 1/4"=1'-0"
DRAWN BY:
ENGINEERED BY:
REVIEWED BY:

WALL SECTIONS
AND STAIR
DETAIL
AD-1



FIRST FLOOR PLAN
(A-1, B-1, AND C-1)

ELECTRICAL LAYOUT NOTES:

- 1) BLOCK AND WIRE FOR ALL CEILING FANS PER PLAN.
- 2) VANITY LIGHTS TO BE SET # 50" AFF. (TYP.)
- 3) ADDITIONAL EXTERIOR OUTLETS REQUIRED BY CODE TO BE LOCATED BY ELECTRICIAN.
- 4) PLACE SWITCHES 8" (MIN) FROM ROUGH OPENING.

ELECTRICAL LEGEND	
	10 V OUTLET
	WALL MOUNT LIGHT
	CEILING MOUNT LIGHT
	PENDANT LIGHT
	RECESSED CAN LIGHT
	MINI CAN LIGHT
	EYEBALL LIGHT
	FLUORESCENT LIGHT
	2 LAMP, 4' FLUORESCENT LIGHT
	FLOOD LIGHT
	SWITCH
	3-WAY SWITCH
	4-WAY SWITCH
	DIMMER SWITCH
	CONDUIT FOR COMPONENT WIRING
	BREAKER
	DOORBELL CHIME
	10 V SMOKE DETECTOR
	CO DETECTOR
	EXHAUST FAN
	LOW VOLTAGE PANEL
	CEILING FAN
	CEILING FAN W/ LIGHT

J.S. THOMPSON ENGINEERING, INC.
606 WADE AVE., SUITE 104
RALEIGH, NC 27605
PHONE: (919) 780-9919
FAX: (919) 780-9921
N.C. LICENSE NO.: C41733



PLEASE PROMPTLY NOTIFY US OF ANY CHANGES TO THE ORIGINAL CONTRACT. ALL DIMENSIONS AND MATERIALS ARE SUBJECT TO CHANGE WITHOUT NOTICE. SQUARE FOOTAGE AND DIMENSIONS ARE ESTIMATED AND MAY VARY IN ACTUAL CONSTRUCTION. ALL DIMENSIONS AND FINISHES WILL BE DETERMINED BY THE SITE PLAN AND FLOOR PLAN. FLOOR PLANS AND ELEVATION RENDERINGS ARE ARTIST CONCEPTIONS. FLOOR PLANS ARE THE COPYRIGHTED PROPERTY OF H&H HOMES, INC. ANY REPRODUCTION, REUSE, OR MODIFICATION OF THIS DOCUMENT IS PROHIBITED. SEE NEW HOME SALES CONSULTANT FOR CURRENT DETAILS. COPYRIGHT © 2019 H&H HOMES.

H&H HOMES, INC.
JORDAN

DATE: MARCH 15, 2019
REV.: MAY 01, 2020
SCALE: 1/4" = 1'-0"
DRAWN BY:
ENGINEERED BY:
REVIEWED BY:

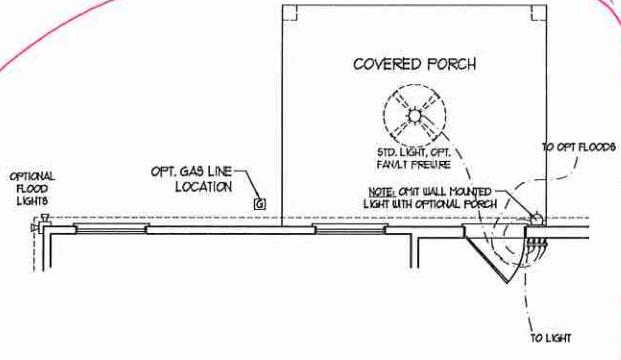
FIRST FLOOR ELECTRICAL PLAN

ELECTRICAL LAYOUT NOTES:

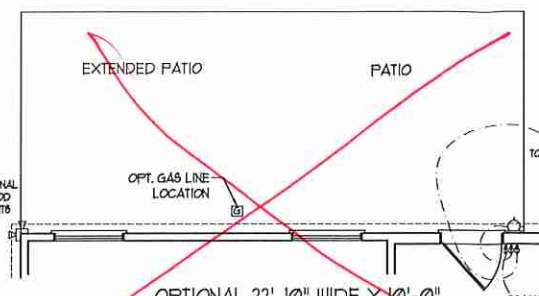
- 1) BLOCK AND WIRE FOR ALL CEILING FANS PER PLAN
- 2) VANITY LIGHTS TO BE SET # 30" AFF. (TYP)
- 3) ADDITIONAL EXTERIOR OUTLETS REQUIRED BY CODE TO BE LOCATED BY ELECTRICIAN
- 4) PLACE SWITCHES 6" (MIN) FROM ROUGH OPENINGS.

ELECTRICAL LEGEND

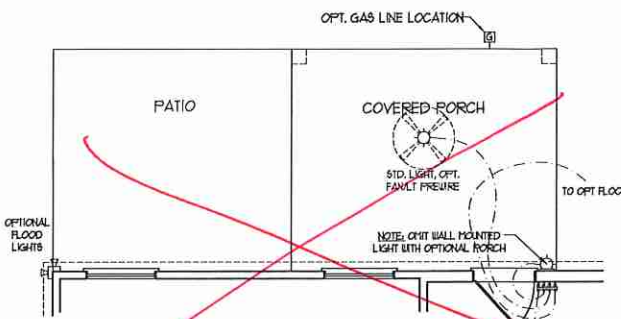
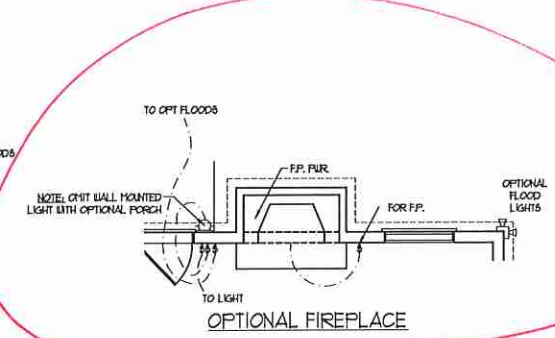
	10 V OUTLET
	WALL MOUNT LIGHT
	CEILING MOUNT LIGHT
	PENDANT LIGHT
	RECESSED CAN LIGHT
	MINI CAN LIGHT
	EYEBALL LIGHT
	FLUORESCENT LIGHT
	2 LAMP, 4 FLUORESCENT LIGHT
	FLOOD LIGHT
	SWITCH
	3-WAY SWITCH
	4-WAY SWITCH
	DIMMER SWITCH
	CONDUIT FOR COMPONENT WIRING
	SPEAKER
	DOORBELL CHIME
	10 V SMOKE DETECTOR
	CO DETECTOR
	EXHAUST FAN
	LOW VOLTAGE PANEL
	CEILING FAN
	CEILING FAN W/ LIGHT



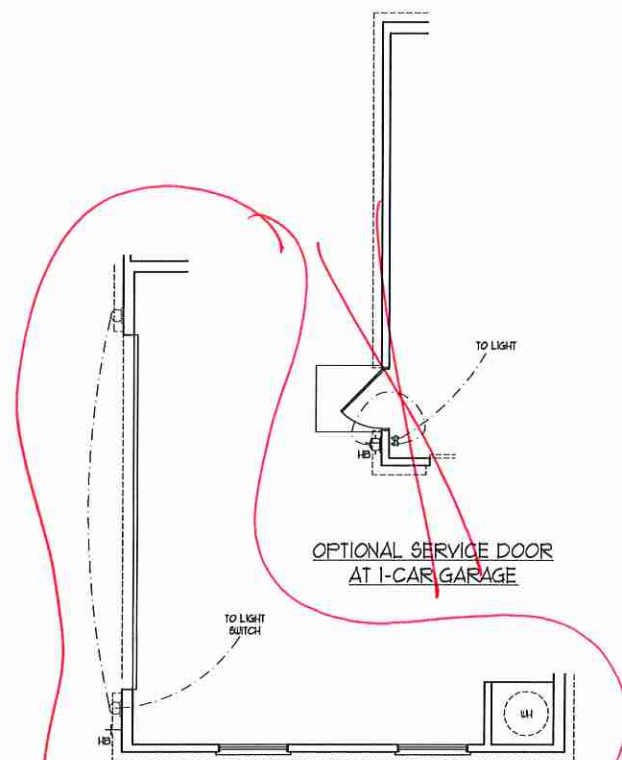
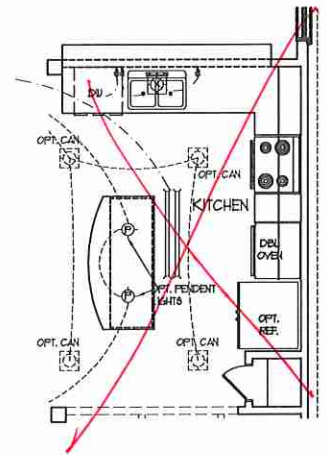
OPTIONAL 12'-0" WIDE X 10'-0" DEEP COVERED REAR PORCH



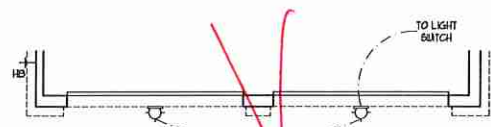
OPTIONAL 22'-10" WIDE X 10'-0" DEEP EXTENDED PATIO



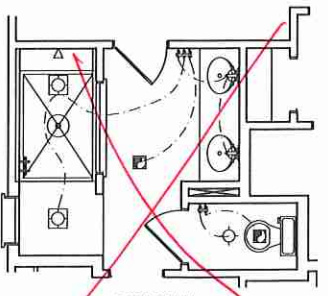
OPTIONAL 12'-0" WIDE X 10'-0" DEEP COVERED REAR PORCH W/ PATIO



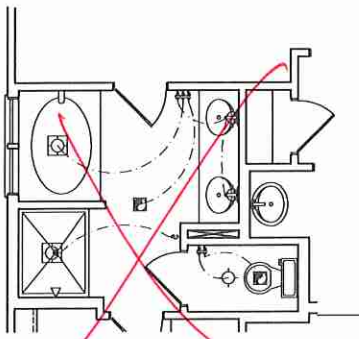
SIDE-LOAD GARAGE OPTION (NOT AVAILABLE WITH OPTIONAL ONE-CAR GARAGE)



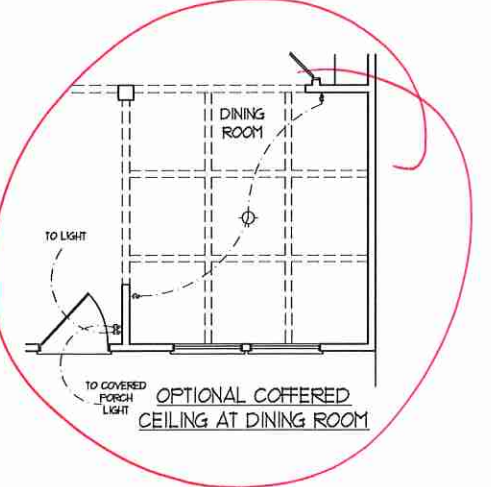
DOUBLE GARAGE DOOR OPTION



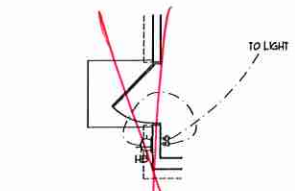
OPTIONAL OWNER'S BATH 3



OPTIONAL OWNER'S BATH 2

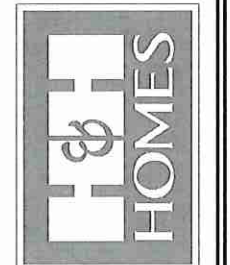


OPTIONAL COVERED CEILING AT DINING ROOM



OPTIONAL SERVICE DOOR AT 2-CAR GARAGE

J.S. THOMPSON ENGINEERING, INC.
600 WADE AVE., SUITE 104
RALEIGH, NC 27605
PHONE: (919) 780-9139
FAX: (919) 780-9211
N.C. LICENSE NO.: C4133

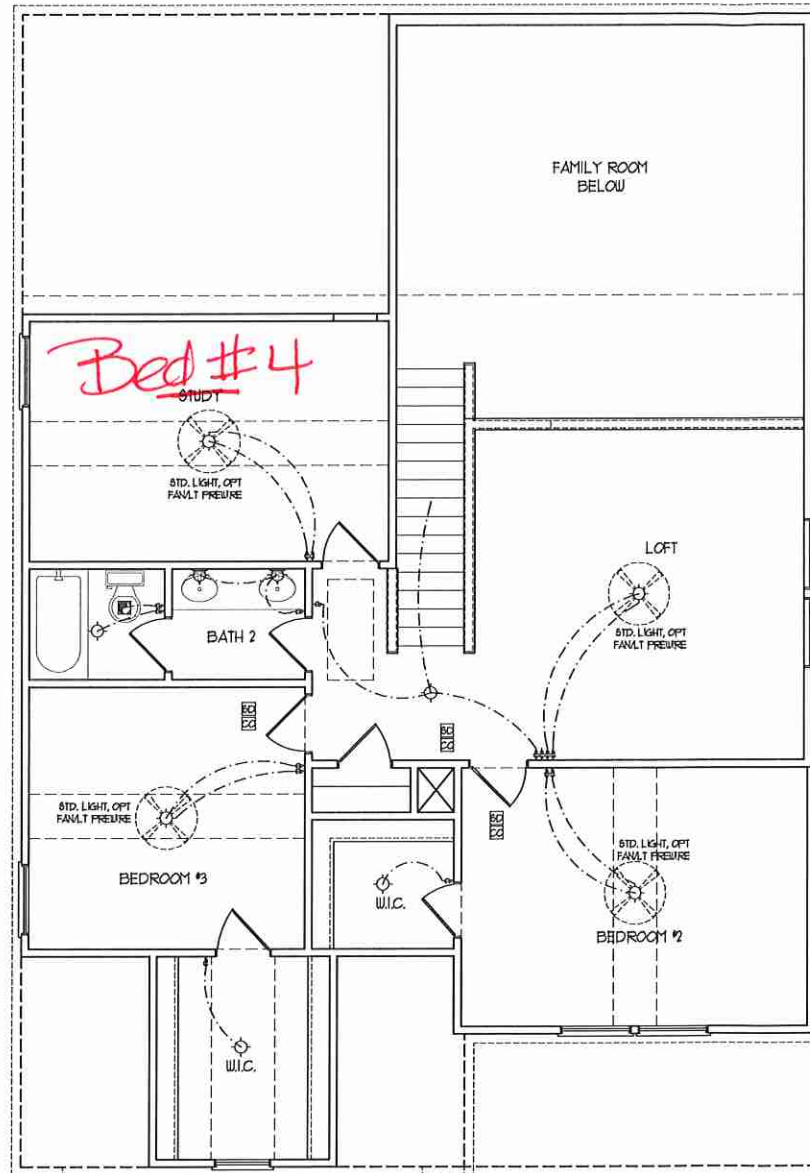


REVISE, PROMOTIONS, INCORPORATE, FEAT. USES, OPTIONS, FLOOR PLANS, ELEVATIONS, RESURS, MATERIALS AND DIMENSIONS ARE SUBJECT TO CHANGE WITHOUT NOTICE. SQUARE FOOTAGE AND DIMENSIONS ARE ESTIMATED AND MAY VARY IN ACTUAL CONSTRUCTION. ACTUAL POSITION OF HOUSE ON LOT, FLOOR PLANS AND ELEVATION DIMENSIONS ARE ARTIST CONCEPTIONS. FLOOR PLANS ARE THE COPYRIGHTED PROPERTY OF H&H-HOMES. ANY USE, REPRODUCTION, ADAPTATION, OR DISPLAY OF THESE PLANS IS STRICTLY PROHIBITED. © 2019 H&H-HOMES. CURRENT DETAILS. © 2019 H&H-HOMES.

H&H HOMES, INC.
JORDAN

DATE: MARCH 15, 2019
REV.: MAY 01, 2020
SCALE: 1/4" = 1'-0"
DRAWN BY:
ENGINEERED BY:
REVIEWED BY:

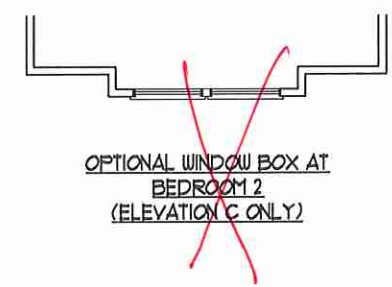
FIRST FLOOR ELECTRICAL OPTIONS
E-1.1



SECOND FLOOR PLAN
(A-1, B-1, AND C-1)

- ELECTRICAL LAYOUT NOTES:**
- 1) BLOCK AND WIRE FOR ALL CEILING FANS PER PLAN
 - 2) VANITY LIGHTS TO BE SET @ 50' AFF. (TYP)
 - 3) ADDITIONAL EXTERIOR OUTLETS REQUIRED BY CODE TO BE LOCATED BY ELECTRICIAN
 - 4) PLACE SWITCHES 8" FROM ROUGH OPENINGS

ELECTRICAL LEGEND	
	120 V OUTLET
	WALL MOUNT LIGHT
	CEILING MOUNT LIGHT
	PENDANT LIGHT
	RECESSED CAN LIGHT
	TIN CAN LIGHT
	EYEBALL LIGHT
	FLUORESCENT LIGHT
	2 LAPP, 4' FLUORESCENT LIGHT
	FLOOD LIGHT
	SWITCH
	3-WAY SWITCH
	4-WAY SWITCH
	DIMMER SWITCH
	CONDUIT FOR COMPONENT WIRING
	SPEAKER
	DOORBELL CHIME
	110 V SMOKE DETECTOR
	CO DETECTOR
	EXHAUST FAN
	LOW VOLTAGE PANEL
	CEILING FAN
	CEILING FAN w/ LIGHT



**J.S. THOMPSON
ENGINEERING, INC.**
608 WADE AVE., SUITE 104
RALEIGH, NC 27605
PHONE: (919) 280-9919
FAX: (919) 789-0921
N.C. LICENSE NO. C-1733

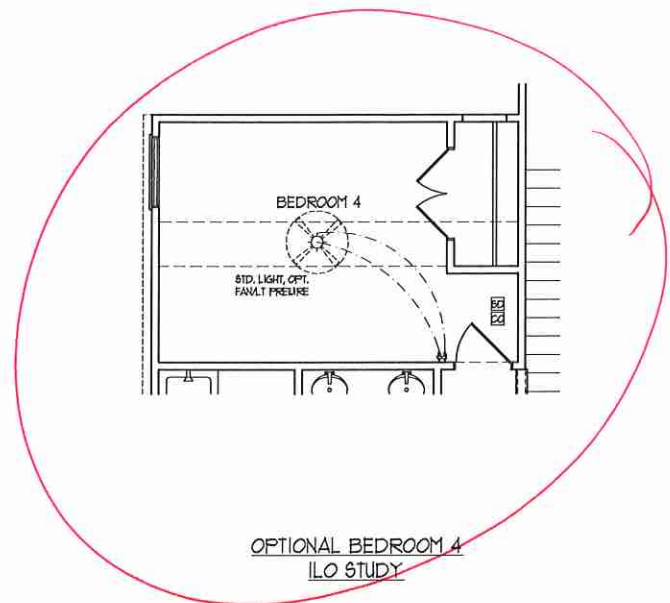


PRICES, PRODUCTIONS, INCENTIVES, FEATURES, MATERIALS AND DIMENSIONS ARE SUBJECT TO CHANGE WITHOUT NOTICE. SQUARE FOOTAGE AND DIMENSIONS ARE ESTIMATED AND MAY VARY IN ACTUAL CONSTRUCTION. ACTUAL POSITION OF HOUSE ON LOT, ELEVATIONS, FINISHES, AND ELEVATION DIMENSIONS ARE FIRST CONCEPTIONS. FLOOR PLANS ARE THE COPYRIGHTED PROPERTY OF H&H HOMES. ANY USE, REPRODUCTION, ADAPTATION, OR DISPLAY OF THE PLANS IS STRICTLY PROHIBITED. SEE NEW YORK STATE CONSULTING ENGINEER'S DETAILS. © 2019 H&H HOMES

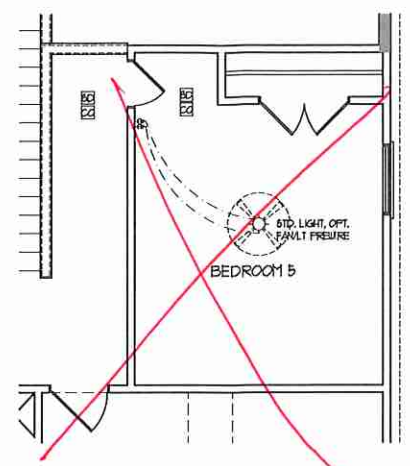
H&H HOMES, INC.
JORDAN

DATE: MARCH 15, 2019
REV.: MAY 01, 2020
SCALE: 1/4" = 1'-0"
DRAWN BY:
ENGINEERED BY:
REVIEWED BY:

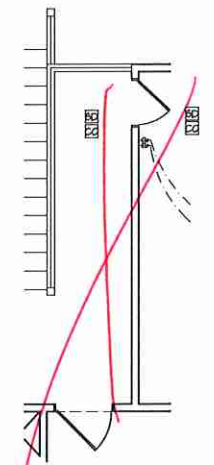
SECOND FLOOR
ELECTRICAL
PLAN



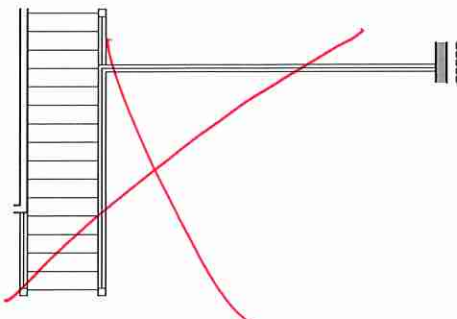
OPTIONAL BEDROOM 4 ILO STUDY



OPTIONAL BEDROOM 5 ILO LOFT



OPTIONAL OPEN RAIL ILO 45" WALL W/ CAP W/ BEDROOM 5 ILO LOFT



OPEN RAIL ILO 45" WALL W/ CAP

- ELECTRICAL LAYOUT NOTES:**
- 1) BLOCK AND WIRE FOR ALL CEILING FANS PER PLAN
 - 2) VANITY LIGHTS TO BE SET # 90" AFF. (TYP)
 - 3) ADDITIONAL EXTERIOR OUTLETS REQUIRED BY CODE TO BE LOCATED BY ELECTRICIAN
 - 4) PLACE SWITCHES BY (1)1U FROM ROUGH OPENINGS.

ELECTRICAL LEGEND	
	120 V OUTLET
	WALL MOUNT LIGHT
	CEILING MOUNT LIGHT
	PENDANT LIGHT
	RECESSED CAN LIGHT
	MINI CAN LIGHT
	EYEBALL LIGHT
	FLUORESCENT LIGHT
	2 LAMP, 4' FLUORESCENT LIGHT
	FLOOD LIGHT
	SWITCH
	3-WAY SWITCH
	4-WAY SWITCH
	DIMMER SWITCH
	CONDUIT FOR COMPONENT WIRING
	SPEAKER
	DOORBELL CHIME
	120 V SMOKE DETECTOR
	CO DETECTOR
	EXHAUST FAN
	LOW VOLTAGE PANEL
	CEILING FAN
	CEILING FAN W/ LIGHT

J.S. THOMPSON ENGINEERING, INC.
 600 WADE AVE., SUITE 104
 RALEIGH, NC 27605
 PHONE: (919) 789-9159
 FAX: (919) 789-9221
 N.C. LICENSE NO. C4733



PRICE PROMOTIONS, INCENTIVES, FEATURES, OPTIONS, FLOOR PLANS, ELEVATIONS, DIMENSIONS AND DIMENSIONS ARE SUBJECT TO CHANGE WITHOUT NOTICE. SQUARE FOOTAGE AND DIMENSIONS ARE ESTIMATED AND MAY VARY IN ACTUAL CONSTRUCTION. ALL DIMENSIONS SHALL BE DETERMINED BY THE SITE PLAN AND/OR FLOOR PLAN. FLOOR PLANS AND ELEVATION RENDERINGS ARE ARTIST CONCEPTIONS. FLOOR PLANS ARE THE COPYRIGHTED PROPERTY OF H&H HOMES, INC. USE, REPRODUCTION, OR ALTERATION OF ANY PART OF THIS DOCUMENT IS PROHIBITED. SEE BUYER'S GUIDE FOR CURRENT DETAILS. COPYRIGHT © 2019 H&H HOMES

H&H HOMES, INC.
JORDAN

DATE: MARCH 15, 2019
 REV.: MAY 01, 2020
 SCALE: 1/4"=1'-0"
 DRAWN BY:
 ENGINEERED BY:
 REVIEWED BY:

SECOND FLOOR ELECTRICAL OPTIONS

E-2.1

BRACED WALL DESIGN NOTES:

- BRACED WALL DESIGN PER SECTION R602.10 OF THE NCRC 2018 EDITION.
- C5-105P REFERS TO "CONTINUOUS SHEATHING - WOOD STRUCTURAL PANELS" CONTRACTOR IS TO INSTALL 1/8" OSB ON ALL EXTERIOR WALLS ATTACHED w/ 8d NAILS SPACED 6" O.C. ALONG PANEL EDGES AND 12" O.C. IN THE FIELD.
- GB REFERS TO "GYPSUM BOARD" CONTRACTOR IS TO INSTALL 1/2" (MIN) GYPSUM WALL BOARD WHERE NOTED ON THE PLANS. FASTEN GB WITH 1 1/4" SCREWS OR 1 5/8" NAILS SPACED 1" O.C. ALONG PANEL EDGES AND IN THE FIELD INCLUDING TOP AND BOTTOM PLATES.
- BRACED WALL DESIGN APPLIED IN WIND ZONES UP TO 130 MPH. FOR HIGH WIND ZONES, BRACE WALLS ARE TO BE CONSTRUCTED IN ACCORDANCE WITH CHAPTER 45 OF THE NCRC 2018 EDITION.
- SEE NOTES AND DETAIL SHEETS FOR ADDITIONAL BRACED WALL INFORMATION.

NOTE:

- PER SECTION R602.10.4.6 OF THE 2018 NCRC, THE AMOUNT OF BRACINGS REQUIRED ON THE WALK OUT BASEMENT WALLS EXCEEDS THE AMOUNT OF BRACING ON THE WALL ABOVE MULTIPLIED BY A FACTOR OF 1.5.
- SHEATH ALL EXTERIOR WALLS WITH 1/8" OSB SHEATHING ATTACHED WITH 8d NAILS AT 6" O.C. ALONG PANEL EDGES AND 12" O.C. IN THE FIELD.

STRUCTURAL NOTES:

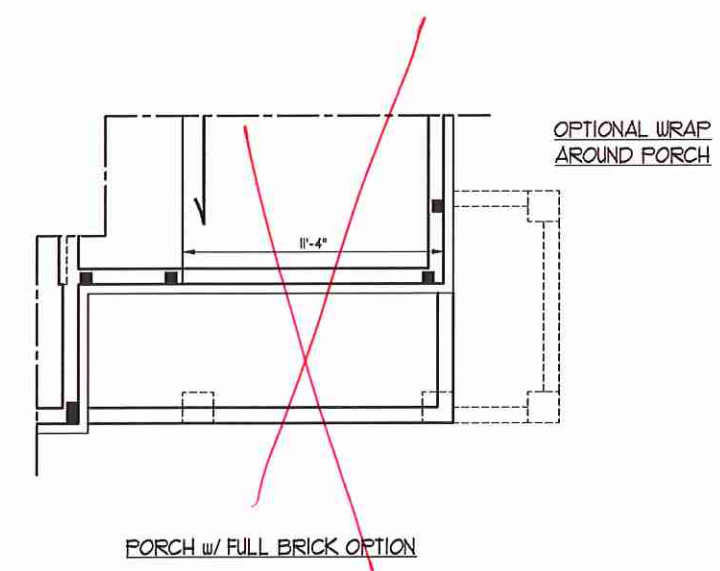
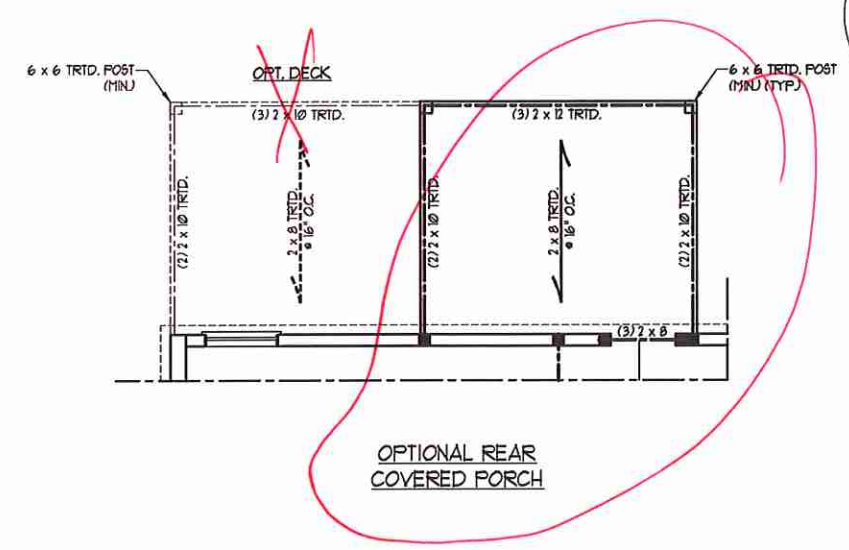
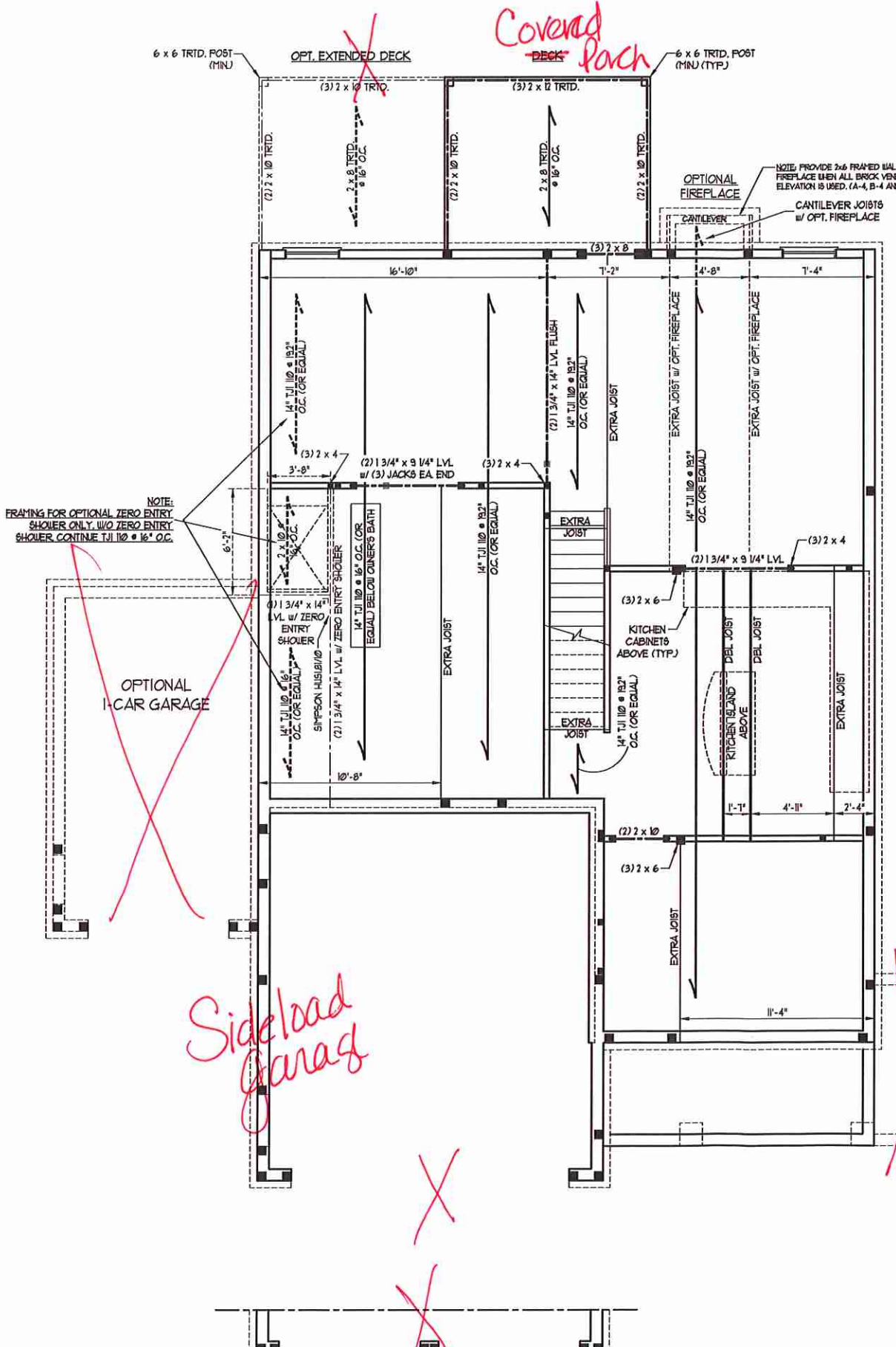
ALL FRAMING LUMBER TO BE #2 SFF (UNO).
 ALL LOAD BEARING HEADERS TO BE (3) 2 x 8 (UNO).
 SQUARES DENOTE POINT LOADS WHICH REQUIRE SOLID BLOCKING TO GIRDER OR FOUNDATION. SUPPORT UNSPECIFIED PT. LOADS ALONG FRAMED WALLS w/ (2) STUDS (UNO).
 INSTALL AN EXTRA JOIST UNDER WALLS PARALLEL TO FLOOR JOISTS WHERE NOTED ON THE PLANS.
 STEP POURED FOUNDATION WALL DOWN TO 2 x 6 @ 16" O.C. 5/16" WALL AS GRADE PERMITS.
 ALL LOAD BEARING INTERIOR WALLS TO BE 2 x 4 @ 12" O.C. OR 2 x 6 @ 16" O.C. (UNO).
 FOR HIGH WIND ZONES, ALL EXTERIOR WALLS TO BE SHEATHED WITH 1/8" OSB SHEATHING WITH JOINTS BLOCKED AND SECURED WITH 8d NAILS AT 3" O.C. ALONG EDGES AND 6" O.C. IN THE FIELD.
 FOR HIGH WIND ZONES, SECURE ALL EXTERIOR WALL SHEATHING PANELS TO DOUBLE TOP PLATES, BANDS, JOISTS, AND GIRDERS WITH (2) ROWS OF 8d NAILS STAGGERED AT 3" O.C. PANELS SHALL EXTEND 12" BEYOND CONSTRUCTION JOINTS AND SHALL OVERLAP GIRDERS AND DOUBLE SILL PLATES THEIR FULL DEPTH.
 ALL 4 x 4 POSTS SHALL BE ANCHORED TO SLABS w/ SIMPSON ABU44 POST BASES (OR EQUAL) AND 6 x 6 POSTS w/ ABU66 POST BASES (OR EQUAL) (UNO). ALL 4 x 4 AND 6 x 6 POSTS TO BE INSTALLED WITH 100 LB CAPACITY UPLIFT CONNECTORS AT TOP (UNO).
 FOR FIBERGLASS, ALUMINUM, OR COLUMN ENG. BY OTHERS, SECURE TO SLAB w/ (2) METAL ANGLES USING 2" CONC. SCREWS. FASTEN ANGLES TO COLUMNS w/ 1/4" THROUGH BOLTS w/ NUTS AND WASHERS. LOCATE ANGLES ON OPPOSITE SIDES OF COLUMN. THROUGH BOLTS MUST BE INSTALLED PRIOR TO SETTING COLUMN.
 REFER TO NOTES AND DETAIL SHEETS FOR ADDITIONAL STRUCTURAL INFORMATION.

LINTEL SCHEDULE FOR BRICK/NATURAL STONE SUPPORT

LENGTH (FT.)	SIZE OF LINTEL
UP TO 4 FT.	L 3 1/2 x 3 1/2 x 1/4
4-8	L 5 x 3 1/2 x 5/16 LLV
AND GREATER	L 6 x 4 x 5/16 LLV

BRICK SUPPORT NOTES:

LINTEL SCHEDULE APPLIES TO ALL OPENINGS IN BRICK VENEER (UNO). SEE ARCH DWGS. FOR SIZE AND LOCATION OF OPENINGS.
 (LLV) = LONG LEG VERTICAL
 LENGTH = CLEAR OPENING
 EMBED ALL ANGLE IRONS MIN. 4" EACH SIDE INTO VENEER TO PROVIDE BEARING.
 FOR ALL HEADERS 8'-0" AND GREATER IN LENGTH, ATTACH STEEL ANGLE TO HEADER w/ 1/2" LAG SCREWS @ 12" O.C. STAGGERED.
 FOR ALL BRICK SUPPORT @ ROOF LINES, FASTEN (2) 2 x 10 BLOCKING BETWEEN STUDS w/ (4) 12d NAILS PER PLY. FASTEN A 6" x 4" x 5/16" STEEL ANGLE TO (2) 2 x 10 BLOCKING w/ (2) 1/2" LAG SCREWS @ 12" O.C. STAGGERED. SEE SECTION R102.2.2 OF THE 2018 NCRC FOR ADDITIONAL BRICK SUPPORT INFORMATION.
 PRECAST REINFORCED CONCRETE LINTELS ENGINEERED BY OTHERS MAY BE USED IN LIEU OF STEEL LINTELS.



J.S. THOMPSON ENGINEERING, INC.
 606 WADE AVE., SUITE 104 RALEIGH, NC 27605
 PHONE: (919) 789-9919 FAX: (919) 789-9921
 N.C. LICENSE NO.: C-1733

JORDAN H&H HOMES, INC.

DATE: NOVEMBER 5, 2020
 SCALE: 1/4" = 1'-0"
 DRAWN BY: RENAISSANCE RESIDENTIAL DESIGN
 ENGINEERED BY: WFB



LINTEL SCHEDULE FOR BRICK/NATURAL STONE SUPPORT

LENGTH (FT.)	SIZE OF LINTEL
UP TO 4 FT.	L 3 1/2 x 3 1/2 x 1/4
4-8	L 5 x 3 1/2 x 5/16 LLV
8 AND GREATER	L 6 x 4 x 5/16 LLV

BRICK SUPPORT NOTES:

- LINTEL SCHEDULE APPLIES TO ALL OPENINGS IN BRICK VENEER (UNO). SEE ARCH DUGS FOR SIZE AND LOCATION OF OPENINGS.
- (LLV) = LONG LEG VERTICAL
- LENGTH = CLEAR OPENING
- EMBED ALL ANGLE IRONS MIN. 4" EACH SIDE INTO VENEER TO PROVIDE BEARING.
- FOR ALL HEADERS 8'-0" AND GREATER IN LENGTH, ATTACH STEEL ANGLE TO HEADER W/ 1/2" LAG SCREWS @ 12" O.C. STAGGERED.
- FOR ALL BRICK SUPPORT @ ROOF LINES, FASTEN (2) 2 x 10 BLOCKING BETWEEN STUDS W/ (4) 12d NAILS PER FLY. FASTEN A 6" x 4" x 5/16" STEEL ANGLE TO (2) 2 x 10 BLOCKING W/ (2) 1/2" LAG SCREWS @ 12" O.C. STAGGERED. SEE SECTION R103.8.2.1 OF THE 2018 NRC FOR ADDITIONAL BRICK SUPPORT INFORMATION.
- PRECAST REINFORCED CONCRETE LINTELS ENGINEERED BY OTHERS MAY BE USED IN LIEU OF STEEL LINTELS.

NOTE: ALL EXTERIOR WALLS AND PATTIC WALLS ARE TO BE 2 x 6 @ 16" C. (UNO). 2 x 4 @ 16" O.C. EXTERIOR WALLS MAY BE CONSTRUCTED IN LIEU OF 2 x 6 WALLS (UNO). ALL INTERIOR LOAD BEARING WALLS ARE TO BE 2 x 6 @ 16" O.C. (UNO) AND NON-LOAD BEARING INTERIOR WALLS ARE TO BE 2 x 4 @ 24" O.C. (UNO).

STRUCTURAL NOTES:

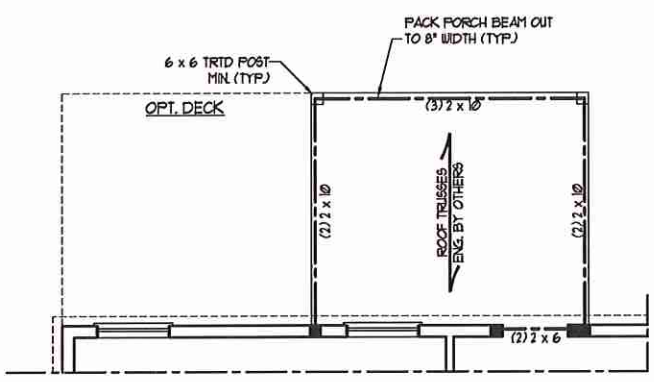
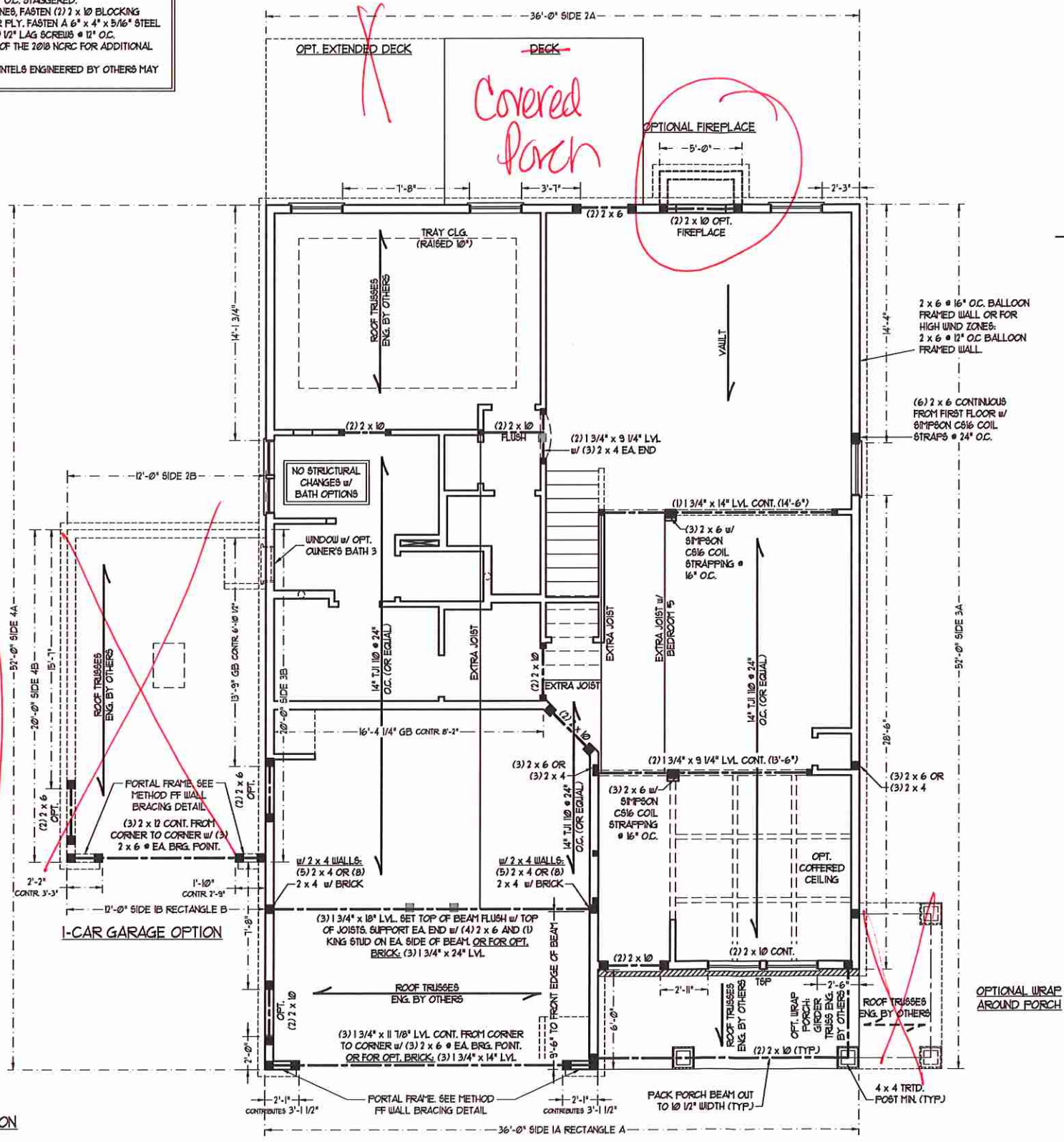
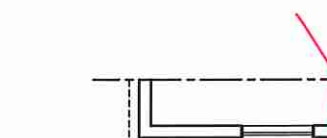
ALL FRAMING LUMBER TO BE SFF 1/2 (UNO). ALL TREATED LUMBER TO BE SYP 1/2 (UNO). ALL LOAD BEARING HEADERS TO BE (2) 2 x 6 (UNO).
 INSTALL AN EXTRA JOIST UNDER WALLS PARALLEL TO FLOOR JOISTS WHERE NOTED ON THE PLANS.
 WINDOW AND DOOR HEADERS TO BE SUPPORTED W/ (1) JACK STUD AND (1) KING STUD EA. END (UNO). SEE TABLE R602.15 FOR ADDITIONAL KING STUD REQUIREMENTS. SQUARES DENOTE POINT LOADS WHICH REQUIRE SOLID BLOCKING TO GIRDER OR FOUNDATION. ALL SQUARES TO BE (2) STUDS (UNO).
 FOR HIGH WIND ZONES, ALL EXTERIOR WALLS TO BE SHEATHED WITH 1/8" OSB SHEATHING WITH JOISTS BLOCKED AND SECURED WITH 8d NAILS AT 3" O.C. ALONG EDGES AND 6" O.C. IN THE FIELD.
 FOR HIGH WIND ZONES, SECURE ALL EXTERIOR WALL SHEATHING PANELS TO DOUBLE TOP FLATES, BANDS, JOISTS, AND GIRDERS WITH (2) ROWS OF 8d NAILS STAGGERED AT 3" O.C. PANELS SHALL EXTEND 1" BEYOND CONSTRUCTION JOINTS AND SHALL OVERLAP GIRDERS AND DOUBLE SILL FLATES THEIR FULL DEPTH.
 ALL 4 x 4 POSTS SHALL BE ANCHORED TO SLABS W/ SIMPSON ABU44 POST BASES (OR EQUAL) AND 6 x 6 POSTS W/ ABU66 POST BASES (OR EQUAL) (UNO). ALL 4 x 4 AND 6 x 6 POSTS TO BE INSTALLED WITH 100 LB CAPACITY UPLIFT CONNECTORS AT TOP (UNO). FOR FIBERGLASS, ALUMINUM, OR COLUMN ENG. BY OTHERS, SECURE TO SLAB W/ (2) METAL ANGLES USING 2" CONC. SCREWS. FASTEN ANGLES TO COLUMNS W/ 1/4" THROUGH BOLTS W/ NUTS AND WASHERS. LOCATE ANGLES ON OPPOSITE SIDES OF COLUMN. THROUGH BOLTS MUST BE INSTALLED PRIOR TO SETTING COLUMN. REFER TO NOTES AND DETAIL SHEETS FOR ADDITIONAL STRUCTURAL INFORMATION.

TSP INDICATES TRIFLE STUD POCKET BETWEEN WINDOW UNITS.

TABLE R602.15
 MINIMUM NUMBER OF FULL HEIGHT STUDS EACH END OF HEADERS IN EXTERIOR WALLS

HEADER SPAN (FEET)	MAXIMUM STUD SPACING (INCHES) (PER TABLE R602.15)	
	16	24
UP TO 3'	1	1
4'	2	1
6'	3	2
8'	5	3
10'	6	4

SIDE-LOAD GARAGE OPTION
 (NOT AVAILABLE WITH OPTIONAL ONE-CAR GARAGE)



OPTIONAL REAR COVERED PORCH

BRACED WALL DESIGN

RECTANGLE A		RECTANGLE B	
SIDE 1A (FRONT LOAD)	METHOD: C5-WSP/FF/GB	SIDE 1B	METHOD: C5-WSP/FF
TOTAL REQUIRED LENGTH: 16'	TOTAL PROVIDED LENGTH: 19.83'	TOTAL REQUIRED LENGTH: 32'	TOTAL PROVIDED LENGTH: 6'
SIDE 2A	METHOD: C5-WSP	SIDE 2B	METHOD: C5-WSP
TOTAL REQUIRED LENGTH: 16'	TOTAL PROVIDED LENGTH: 18.5'	TOTAL REQUIRED LENGTH: 32	TOTAL PROVIDED LENGTH: 12'
SIDE 3A	METHOD: C5-WSP	SIDE 3B / SIDE 4A CUMULATIVE	METHOD: C5-WSP/GB
TOTAL REQUIRED LENGTH: 11.4'	TOTAL PROVIDED LENGTH: 48.83'	SIDE 3B / SIDE 4A CUMULATIVE	TOTAL REQUIRED LENGTH: 13.4'
SIDE 4A (SIDE LOAD)	METHOD: C5-WSP/FF	SIDE 4B	METHOD: C5-WSP
TOTAL REQUIRED LENGTH: 11.4'	TOTAL PROVIDED LENGTH: 35.2'	TOTAL REQUIRED LENGTH: 2'	TOTAL PROVIDED LENGTH: 15.58'

- BRACED WALL DESIGN NOTES:**
- BRACED WALL DESIGN PER SECTION R602.10 OF THE NRC 2018 EDITION.
 - C5-WSP REFERS TO "CONTINUOUS SHEATHING - WOOD STRUCTURAL PANELS" CONTRACTOR IS TO INSTALL 1/8" OSB ON ALL EXTERIOR WALLS ATTACHED W/ 8d NAILS SPACED 6" O.C. ALONG PANEL EDGES AND 12" O.C. IN THE FIELD.
 - GB REFERS TO "GYPSUM BOARD" CONTRACTOR IS TO INSTALL 1/2" (MIN) GYPSUM WALL BOARD WHERE NOTED ON THE PLANS. FASTEN GB WITH 1/4" SCREWS OR 1 5/8" NAILS SPACED 1" O.C. ALONG PANEL EDGES AND IN THE FIELD INCLUDING TOP AND BOTTOM FLATES.
 - BRACED WALL DESIGN APPLIED IN WIND ZONES UP TO 130 MPH. FOR HIGH WIND ZONES, BRACE WALLS ARE TO BE CONSTRUCTED IN ACCORDANCE WITH CHAPTER 45 OF THE NRC 2018 EDITION.
 - SEE NOTES AND DETAIL SHEETS FOR ADDITIONAL BRACED WALL INFORMATION.

J.S. THOMPSON ENGINEERING, INC.
 606 WADE AVE., SUITE 104 RALEIGH, NC 27605
 PHONE: (919) 789-9919 FAX: (919) 789-9921
 N.C. LICENSE NO.: C-1733

JORDAN H&H HOMES, INC.

DATE: NOVEMBER 5, 2020
 SCALE: 1/4" = 1'-0"
 DRAWN BY: RENAISSANCE RESIDENTIAL DESIGN
 ENGINEERED BY: WFB



- BRACED WALL DESIGN NOTES:**
- BRACED WALL DESIGN PER SECTION R60210 OF THE NCR 2018 EDITION.
 - C5-WSF REFERS TO "CONTINUOUS SHEATHING - WOOD STRUCTURAL PANELS" CONTRACTOR IS TO INSTALL 1/16" OSB ON ALL EXTERIOR WALLS ATTACHED w/ 8d NAILS SPACED 6" O.C. ALONG PANEL EDGES AND 12" O.C. IN THE FIELD.
 - GB REFERS TO "GYPSUM BOARD" CONTRACTOR IS TO INSTALL 1/2" (MIN) GYPSUM WALL BOARD WHERE NOTED ON THE PLANS. FASTEN GB WITH 1 1/4" SCREWS OR 1 5/8" NAILS SPACED 1" O.C. ALONG PANEL EDGES AND IN THE FIELD INCLUDING TOP AND BOTTOM FLATES.
 - BRACED WALL DESIGN APPLIED IN WIND ZONES UP TO 130 MPH. FOR HIGH WIND ZONES, BRACE WALLS ARE TO BE CONSTRUCTED IN ACCORDANCE WITH CHAPTER 45 OF THE NCR 2018 EDITION. SEE NOTES AND DETAIL SHEETS FOR ADDITIONAL BRACED WALL INFORMATION.

NOTE: ALL EXTERIOR WALLS AND PATTIC WALLS ARE TO BE 2 x 6 @ 16" O.C. (UNO). 2 x 4 @ 16" O.C. EXTERIOR WALLS MAY BE CONSTRUCTED IN LIEU OF 2 x 6 WALLS (UNO). ALL INTERIOR LOAD BEARING WALLS ARE TO BE 2 x 6 @ 16" O.C. (UNO) AND NON-LOAD BEARING INTERIOR WALLS ARE TO BE 2 x 4 @ 24" O.C. (UNO).

- NOTE:**
- PER SECTION R60210.3.2 OF THE 2018 NCR, THE AMOUNT OF BRACING ON THE SECOND FLOOR EXCEEDS THE AMOUNT REQUIRED FOR THE FIRST FLOOR AND NO BRACED WALL ANALYSIS IS REQUIRED.
 - SHEATH ALL EXTERIOR WALLS WITH 1/16" OSB SHEATHING ATTACHED WITH 8d NAILS AT 6" O.C. ALONG PANEL EDGES AND 12" O.C. IN THE FIELD.

LINTEL SCHEDULE FOR BRICK/NATURAL STONE SUPPORT

LENGTH (FT.)	SIZE OF LINTEL
UP TO 4 FT.	L 3 1/2 x 3 1/2 x 1/4
4-8	L 5 x 3 1/2 x 5/16 LLY
AND GREATER	L 6 x 4 x 5/16 LLY

BRICK SUPPORT NOTES:

LINTEL SCHEDULE APPLIES TO ALL OPENINGS IN BRICK VENEER (UNO). SEE ARCH DWGS. FOR SIZE AND LOCATION OF OPENINGS.

(LLV) = LONG LEG VERTICAL LENGTH = CLEAR OPENING

EMBED ALL ANGLE IRONS MIN. 4" EACH SIDE INTO VENEER TO PROVIDE BEARING. FOR ALL HEADERS 8"-12" AND GREATER IN LENGTH, ATTACH STEEL ANGLE TO HEADER W/ 1/2" LAG SCREWS @ 12" O.C. STAGGERED.

FOR ALL BRICK SUPPORT @ ROOF LINES, FASTEN (2) 2 x 10 BLOCKING BETWEEN STUDS w/ (4) 12d NAILS PER FLY. FASTEN A 6" x 4" x 5/16" STEEL ANGLE TO (2) 2 x 10 BLOCKING w/ (2) 1/2" LAG SCREWS @ 12" O.C. STAGGERED. SEE SECTION R103.8.21 OF THE 2018 NCR FOR ADDITIONAL BRICK SUPPORT INFORMATION.

PRECAST REINFORCED CONCRETE LINTELS ENGINEERED BY OTHERS MAY BE USED IN LIEU OF STEEL LINTELS.

STRUCTURAL NOTES:

ALL FRAMING LUMBER TO BE SFF 2 (UNO). ALL TREATED LUMBER TO BE SYP 2 (UNO). ALL LOAD BEARING HEADERS TO BE (2) 2 x 6 (UNO). WINDOW AND DOOR HEADERS TO BE SUPPORTED w/ (1) JACK STUD AND (1) KING STUD EA END (UNO). SEE TABLE R602.15 FOR ADDITIONAL KING STUD REQUIREMENTS.

SQUARES DENOTE POINT LOADS WHICH REQUIRE SOLID BLOCKING TO GIRDER OR FOUNDATION. ALL SQUARES TO BE (2) STUDS (UNO).

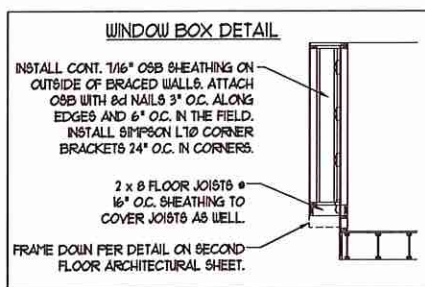
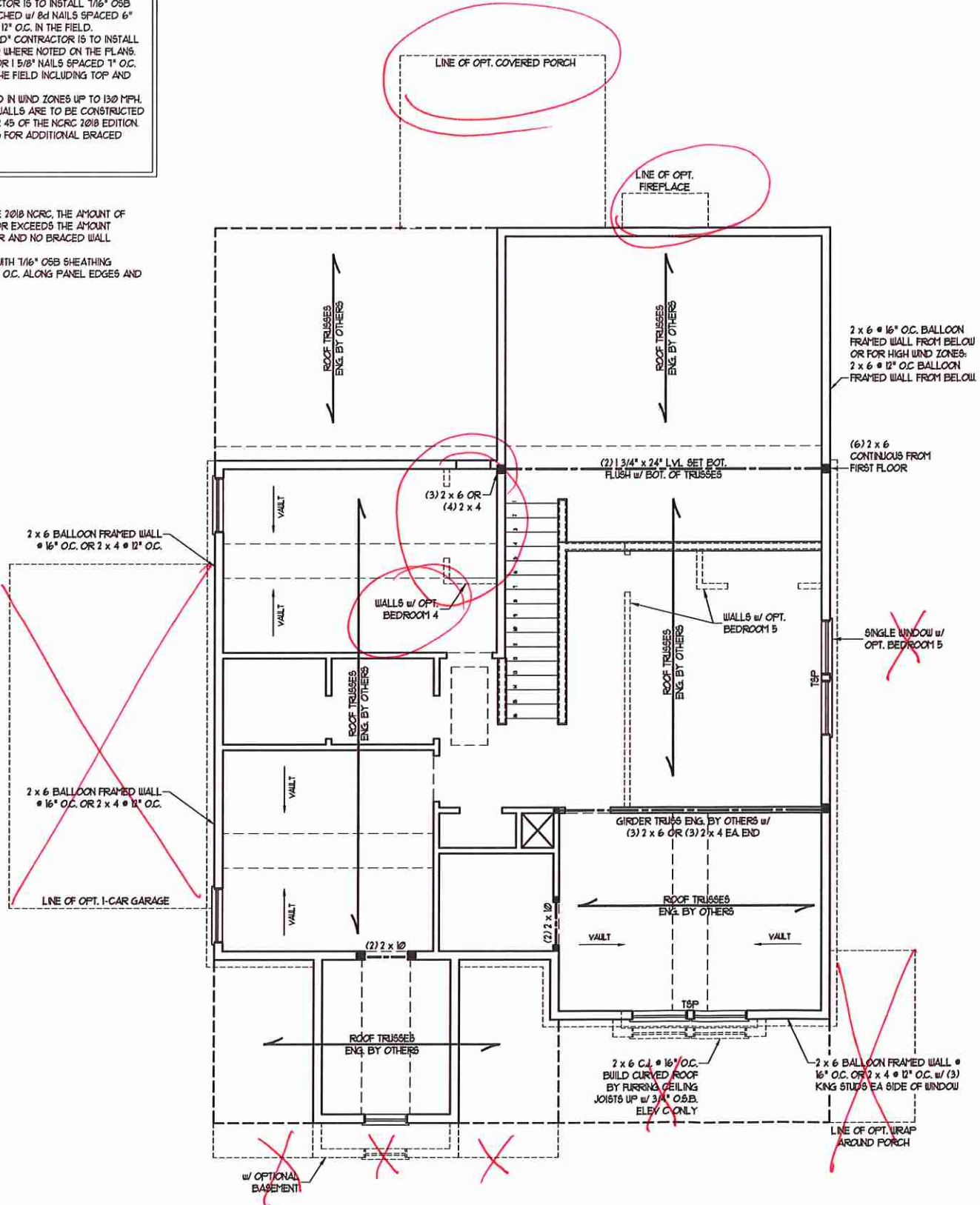
FOR HIGH WIND ZONES, ALL EXTERIOR WALLS TO BE SHEATHED WITH 1/16" OSB SHEATHING WITH JOINTS BLOCKED AND SECURED WITH 8d NAILS AT 3" O.C. ALONG EDGES AND 6" O.C. IN THE FIELD.

FOR HIGH WIND ZONES, SECURE ALL EXTERIOR WALL SHEATHING PANELS TO DOUBLE TOP FLATES, BANDS, JOISTS, AND GIRDERS WITH (2) ROWS OF 8d NAILS STAGGERED AT 3" O.C. PANELS SHALL EXTEND 12" BEYOND CONSTRUCTION JOINTS AND SHALL OVERLAP GIRDERS AND DOUBLE GILL PLATES THEIR FULL DEPTH.

REFER TO NOTES AND DETAIL SHEETS FOR ADDITIONAL STRUCTURAL INFORMATION.

TABLE R602.15
MINIMUM NUMBER OF FULL HEIGHT STUDS EACH END OF HEADERS IN EXTERIOR WALLS

HEADER SPAN (FEET)	MAXIMUM STUD SPACING (INCHES) (PER TABLE R602.3.5)	
	16	24
UP TO 3'	1	1
4'	2	1
6'	3	2
12'	5	3

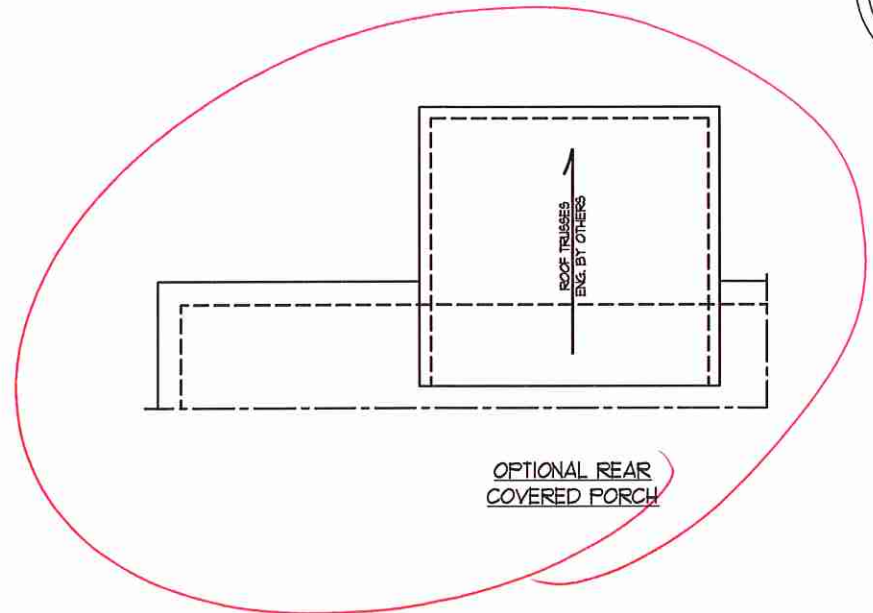
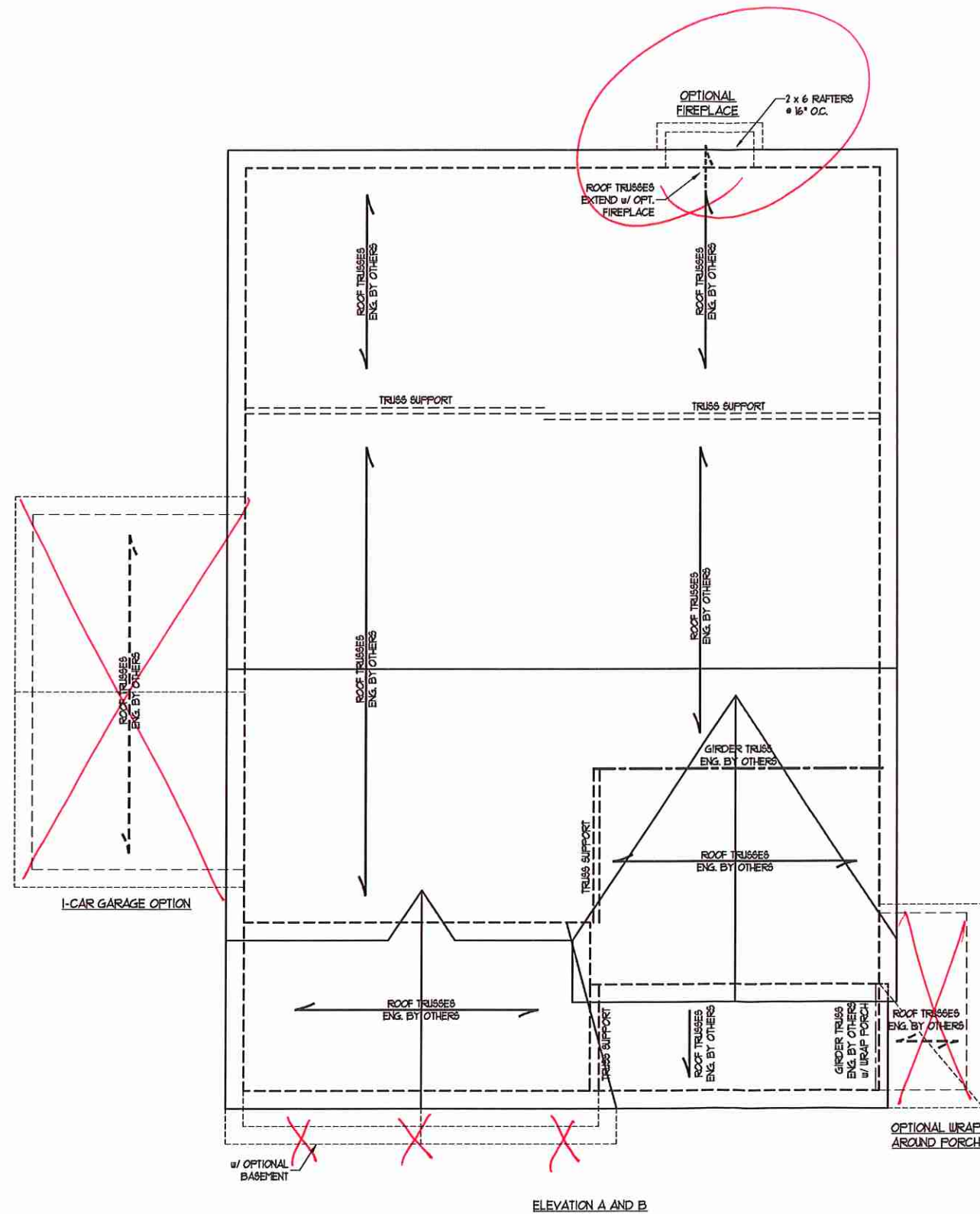


J.S. THOMPSON ENGINEERING, INC.
606 WADE AVE., SUITE 104 RALEIGH, NC 27605
PHONE: (919) 789-9919 FAX: (919) 789-9921
N.C. LICENSE NO.: C-1733

JORDAN H&H HOMES, INC.

DATE: NOVEMBER 5, 2020
SCALE: 1/4" = 1'-0"
DRAWN BY: RENAISSANCE RESIDENTIAL DESIGN
ENGINEERED BY: WFB





BRICK SUPPORT NOTE:

1. FASTEN (2) 2 x 10 BLOCKING BETWEEN WALL STUDS w/ (4) 1d NAILS PER FLY. FASTEN A 6\" x 4\" x 5/16\" STEEL ANGLE TO (2) 2 x 10 BLOCKING w/ (2) 1/2\" LAG SCREWS @ 12\" O.C. STAGGERED. SEE SECTION R103.021 OF THE 2018 NCRC FOR ADDITIONAL BRICK SUPPORT INFORMATION.
2. WHERE ROOF SLOPES EXCEED 1:12, INSTALL 3\" x 3\" x 1/4\" STEEL PLATE STOPS AT 24\" O.C. PER SECTION R103.021 OF THE NORTH CAROLINA RESIDENTIAL CODE, 2018 EDITION.

STRUCTURAL NOTES:

1. ALL FRAMING LUMBER TO BE #2 SFF (UNO).
2. CIRCLES DENOTE (3) 2 x 4 POSTS FOR ROOF SUPPORT.
3. FRAME DORMER WALLS ON TOP OF DOUBLE OR TRIPLE RAFTERS.
4. HIP SPLICES ARE TO BE SPACED A MIN. OF 8'-0\". FASTEN MEMBERS WITH THREE ROWS OF 1d NAILS @ 16\" O.C. (TYP.)
5. STICK FRAME OVER-FRAMED ROOF SECTIONS w/ 2 x 8 RIDGES, 2 x 6 RAFTERS @ 16\" O.C. AND FLAT 2 x 10 VALLEYS OR USE VALLEY TRUSSES.
6. FASTEN FLAT VALLEYS TO RAFTERS OR TRUSSES WITH SIMPSON H25A HURRICANE TIES @ 32\" O.C. MAX. PASS HURRICANE TIES THROUGH NOTCH IN ROOF SHEATHING. EACH RAFTER IS TO BE FASTENED TO THE FLAT VALLEY WITH A MIN. OF (6) 1d TOE NAILS.
7. REFER TO SECTION R802.1 OF THE 2018 NCRC FOR REQUIRED UPLIFT RESISTANCE AT RAFTERS AND TRUSSES.
8. REFER TO NOTES AND DETAIL SHEETS FOR ADDITIONAL STRUCTURAL INFORMATION.

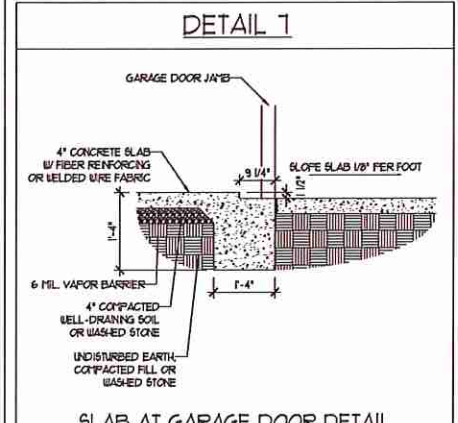
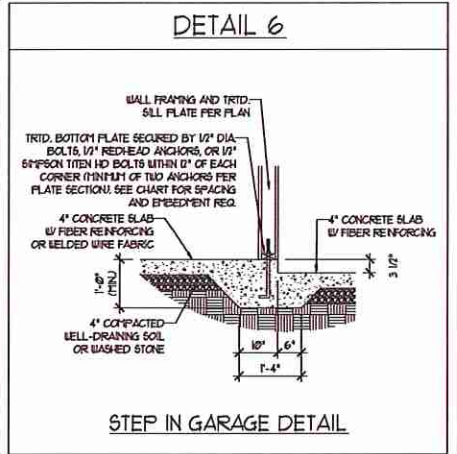
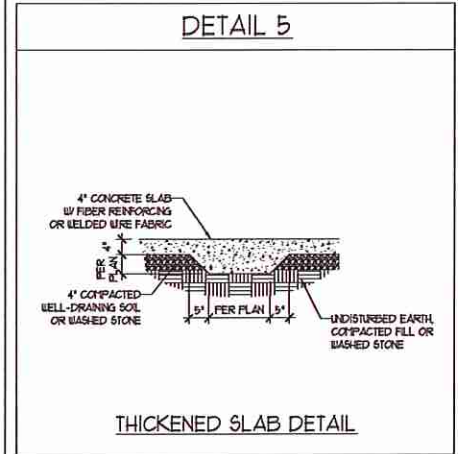
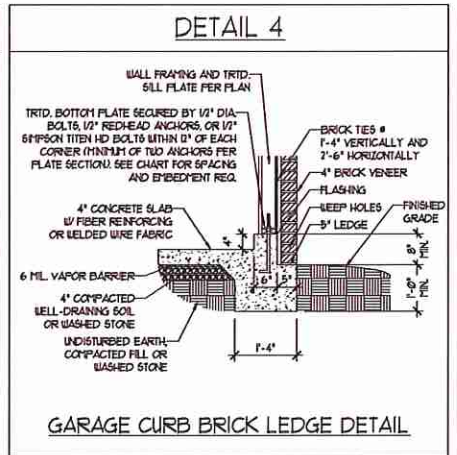
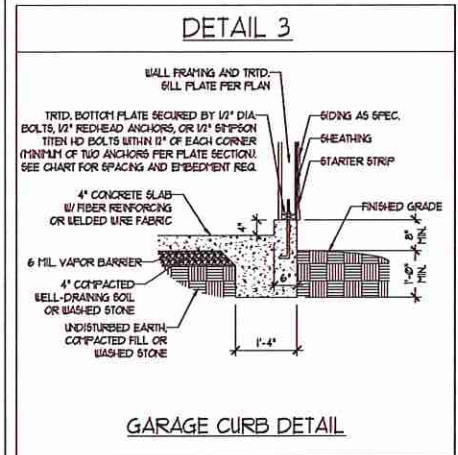
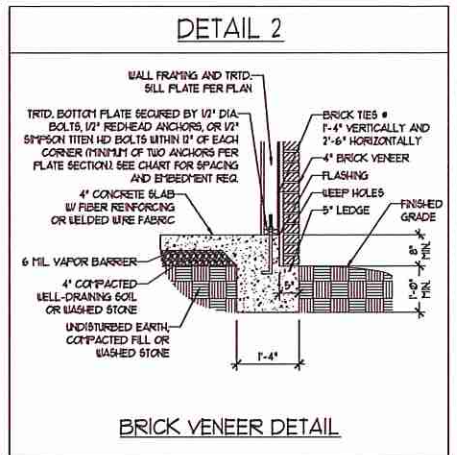
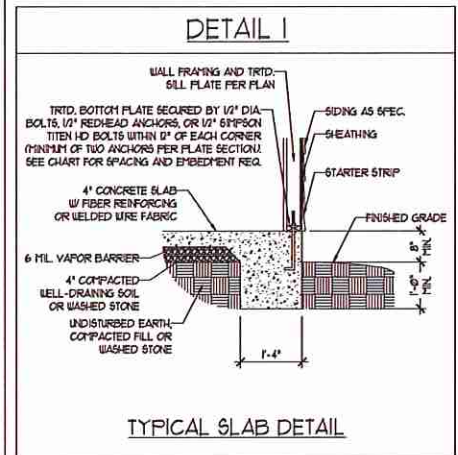
J.S. THOMPSON ENGINEERING, INC.
 606 WADE AVE., SUITE 104 RALEIGH, NC 27605
 PHONE: (919) 789-9919 FAX: (919) 789-9921
 N.C. LICENSE NO.: C-1733

JORDAN
 H&H HOMES, INC.

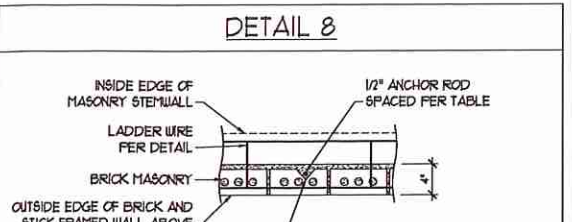
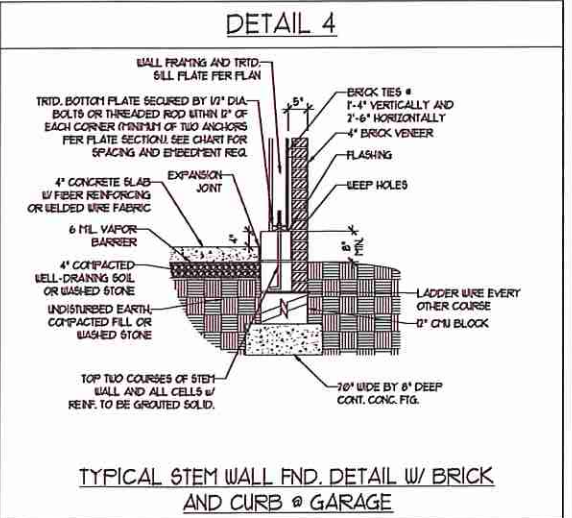
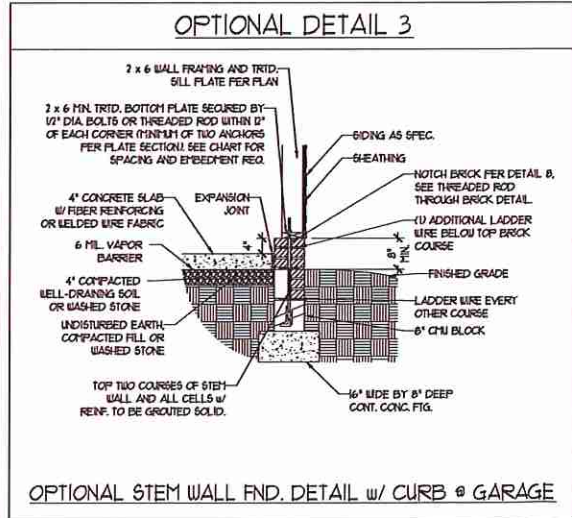
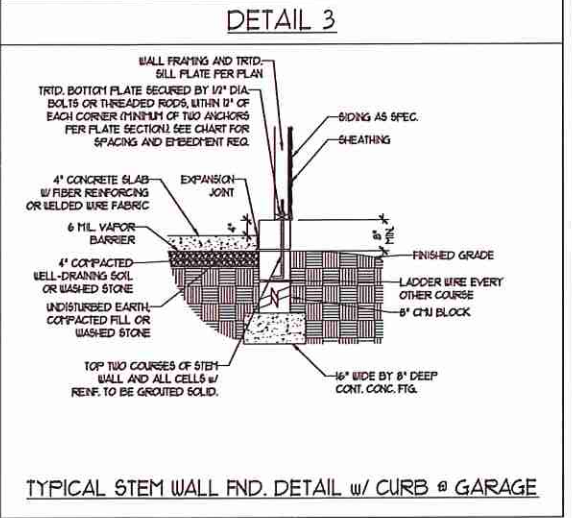
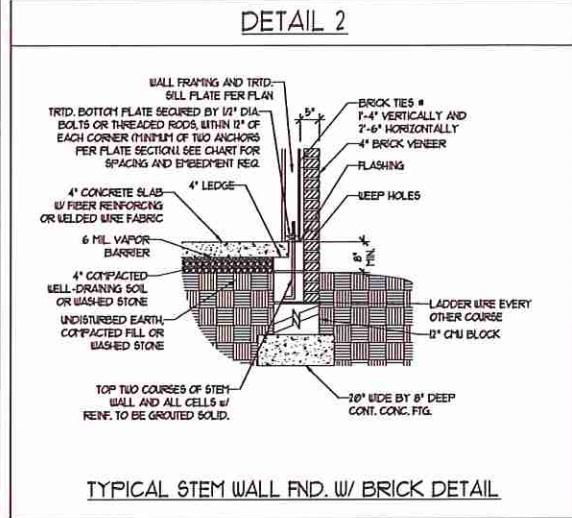
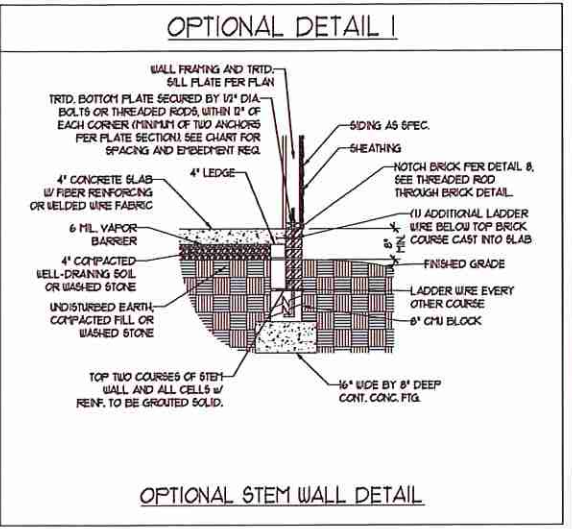
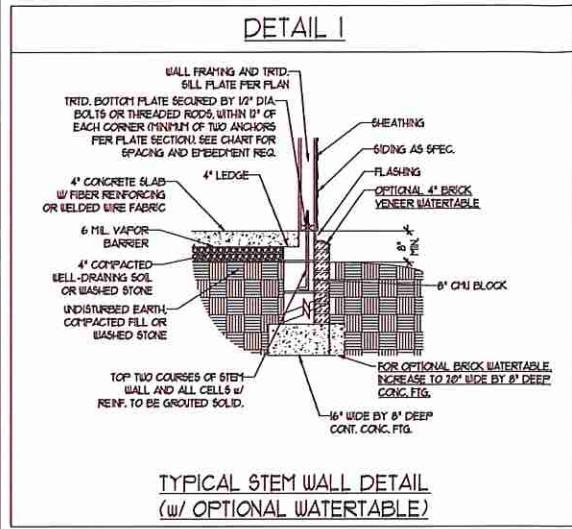
DATE: NOVEMBER 5, 2020
 SCALE: 1/4\" = 1'-0\"
 DRAWN BY: RENAISSANCE RESIDENTIAL DESIGN
 ENGINEERED BY: WFB



MONOLITHIC SLAB DETAILS



STEMWALL DETAILS



MASONRY STEMWALL SPECIFICATIONS

WALL HEIGHT (FEET)	MASONRY WALL TYPE			
	8" CMU	4" BRICK AND 4" CMU	4" BRICK AND 8" CMU	12" CMU
2 AND BELOW	UNGROUTED	GROUT SOLID	UNGROUTED	UNGROUTED
3	UNGROUTED	GROUT SOLID	UNGROUTED	UNGROUTED
4	GROUT SOLID	GROUT SOLID w/ #4 REBAR @ 48" O.C.	GROUT SOLID	GROUT SOLID w/ #4 REBAR @ 64" O.C.
5	GROUT SOLID w/ #4 REBAR @ 36" O.C.	NOT APPLICABLE	GROUT SOLID w/ #4 REBAR @ 36" O.C.	GROUT SOLID w/ #4 REBAR @ 64" O.C.
6	GROUT SOLID w/ #4 REBAR @ 24" O.C.	NOT APPLICABLE	GROUT SOLID w/ #4 REBAR @ 24" O.C.	GROUT SOLID w/ #4 REBAR @ 64" O.C.
7 AND GREATER	ENGINEERED DESIGN BASED ON SITE CONDITIONS			

STRUCTURAL NOTES:

1. WALL HEIGHT MEASURED FROM TOP OF FOOTING TO TOP OF THE WALL.
2. TIE MULTIPLE WYTHES TOGETHER WITH LADDER WIRE AT 16" O.C. VERTICALLY.
3. CHART APPLICABLE FOR HOUSE FOUNDATION ONLY. CONSULT ENGINEER FOR DESIGN OF GARAGE FOUNDATION NOT COMMON TO HOUSE.
4. BACKFILL OF CLEAN #1 / #1 WASHED STONE IS ALLOWABLE.
5. BACKFILL OF WELL DRAINED OR SAND - GRAVEL MIXTURE 60/40 (45 PBF/FT BELOW GRADE) CLASSIFIED AS GROUP 1 ACCORDING TO UNIFIED SOILS CLASSIFICATION SYSTEM IN ACCORDANCE WITH TABLE R402.1 OF THE 2018 INTERNATIONAL RESIDENTIAL CODE ARE ALLOWABLE.
6. PREP SLAB PER R506.2.1 AND R506.2.2 BASE OF THE 2018 INTERNATIONAL RESIDENTIAL CODE. MINIMUM 24" LAP SPLICE LENGTH.
7. LOCATE REBAR IN CENTER OF FOUNDATION WALL.
8. WHERE REQUIRED, FILL BLOCK SOLID WITH TYPE "S" MORTAR OR 3000 PSI GROUT. USE OF "LOW LIFT GROUTING" METHOD REQUIRED WHEN FILLING WALLS WITH GROUT AT HEIGHTS OF 5' AND GREATER.

ANCHOR SPACING AND EMBEDMENT

WIND ZONE	120 MPH	130 MPH
SPACING	6'-0" O.C.	4'-0" O.C.
EMBEDMENT	1"	15" INTO MASONRY 1" INTO CONCRETE

J.S. THOMPSON ENGINEERING, INC.
606 WADE AVE., SUITE 104 RALEIGH, NC 27605
PHONE: (919) 789-9919 FAX: (919) 789-9921
N.C. LICENSE NO.: C-1723

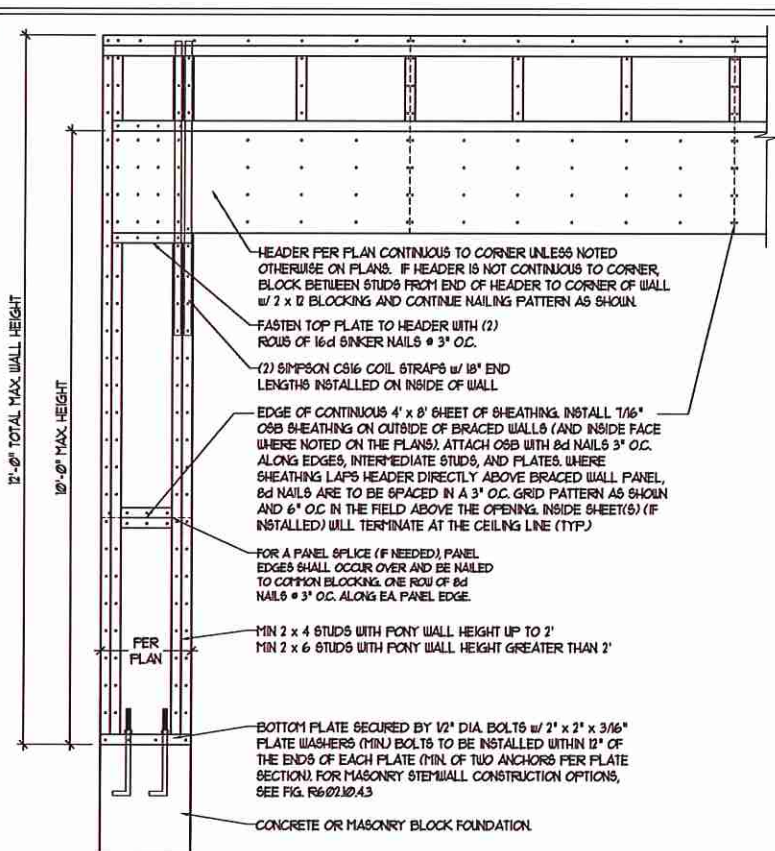
120 MPH - 130 MPH ULTIMATE DESIGN WIND SPEED
FOUNDATION DETAILS

DATE: NOVEMBER 14, 2018
SCALE: NTS
DRAWN BY: JST
ENGINEERED BY: JES

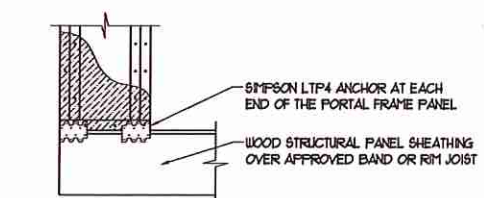


GENERAL WALL BRACING NOTES:

1. WALL BRACING DESIGNED IN ACCORDANCE WITH CHAPTER 6 OF THE 2018 NC RESIDENTIAL BUILDING CODE (NRC). TABLES AND FIGURES REFERENCED ARE FROM THE 2018 NRC.
2. SEE THIS SHEET FOR GENERAL DETAILS. REFER TO THE 2018 NRC FOR ADDITIONAL INFORMATION AS NEEDED.
3. SEE STRUCTURAL SHEETS FOR BRACED WALL LOCATIONS, DIMENSIONS, HOLD DOWN TYPE AND LOCATIONS, BRACED WALL LINE KEY WITH WALL DESIGN SUMMARY OF REQUIRED/PROVIDED TOTALS FOR EACH WALL LINE AND ANY SPECIAL NOTES OR REQUIREMENTS.
4. ALL EXTERIOR WALLS ARE TO BE SHEATHED WITH C5-WSP IN ACCORDANCE WITH SECTION R602.10.3 UNLESS NOTED OTHERWISE.
5. ALL EXTERIOR AND INTERIOR WALLS TO HAVE 1/2" GYPSUM INSTALLED. WHEN NOT USING METHOD 'GB', GYPSUM TO BE FASTENED PER TABLE R602.3.5. METHOD GB TO BE FASTENED PER TABLE R602.10.1.
6. C5-WSP REFERS TO THE 'CONTINUOUS SHEATHING - WOOD STRUCTURAL PANELS' WALL BRACING METHOD. 1/16" OSB SHEATHING IS TO BE INSTALLED ON ALL EXTERIOR WALLS ATTACHED w/ 6d COMMON NAIL OR 8d (2 1/2" LONG x 0.13" DIAMETER) NAILS SPACED 6" O.C. ALONG PANEL EDGES AND 12" O.C. IN THE FIELD (UNO.).
7. GB REFERS TO THE 'GYPSUM BOARD' WALL BRACING METHOD. 1/2" (MIN) GYPSUM WALL BOARD IS TO BE INSTALLED ON BOTH SIDES OF THE BRACED WALL FASTENED WITH 1 1/4" SCREWS OR 1 5/8" NAILS SPACED 1" O.C. ALONG PANEL EDGES INCLUDING TOP AND BOTTOM PLATES AND INTERMEDIATE SUPPORTS (UNO.). VERIFY ALL FASTENER OPTIONS FOR 1/2" AND 5/8" GYPSUM PRIOR TO CONSTRUCTION. FOR INTERIOR FASTENER OPTIONS SEE TABLE R602.3.5. FOR EXTERIOR FASTENER OPTIONS SEE TABLE R602.3(1). EXTERIOR GB TO BE INSTALLED VERTICALLY.
8. REQUIRED BRACED WALL LENGTH FOR EACH SIDE OF THE CIRCUMSCRIBED RECTANGLE ARE INTERPOLATED PER TABLE R602.10.3. METHOD C5-WSP CONTRIBUTES ITS ACTUAL LENGTH, METHOD GB CONTRIBUTES 5 ITS ACTUAL LENGTH, AND METHOD PF CONTRIBUTES 15 TIMES ITS ACTUAL LENGTH.

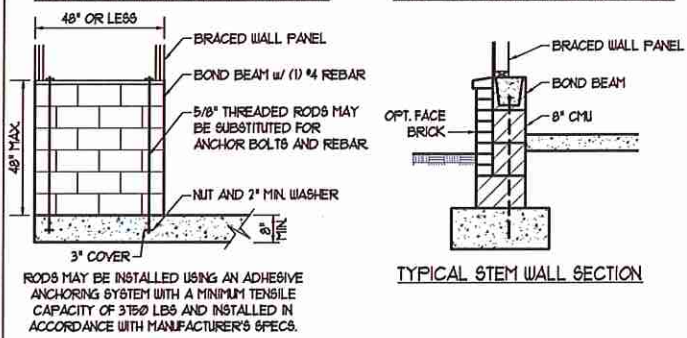
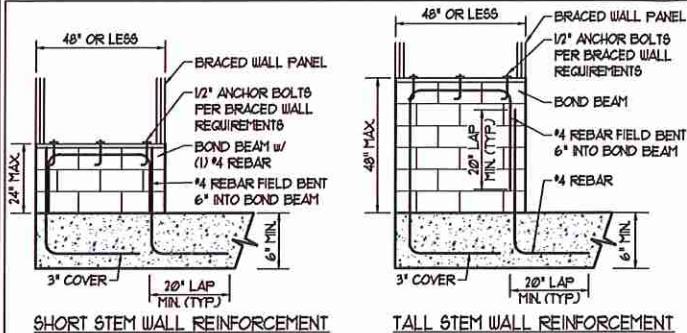


OVER CONCRETE OR MASONRY BLOCK FOUNDATION

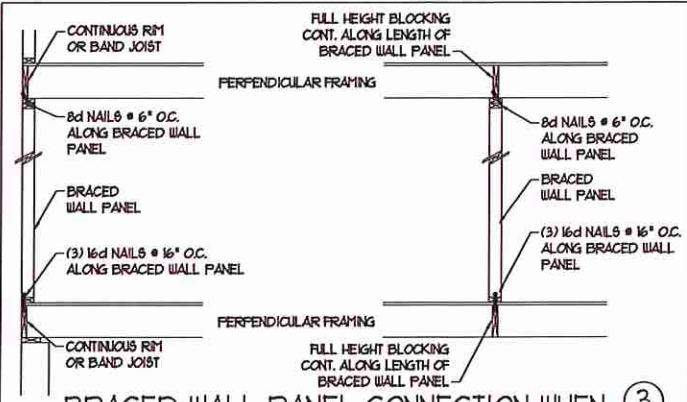


OVER RAISED WOOD FLOOR - FRAMING ANCHOR OPTION
 * APPLICABLE w/ GREATER THAN 12" KNEE WALL HEIGHTS IN CRAWL SPACE AND ABOVE FRAMED BASEMENT WALLS *

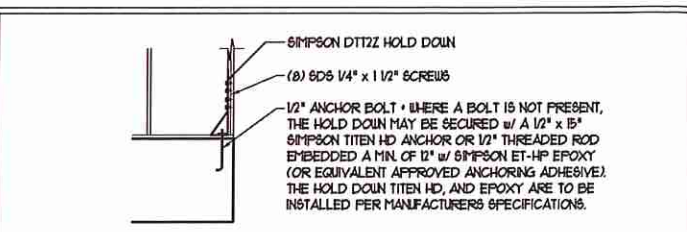
METHOD PF-PORTAL FRAME DETAIL ①



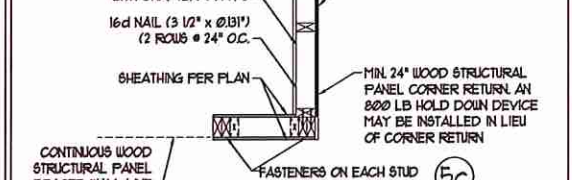
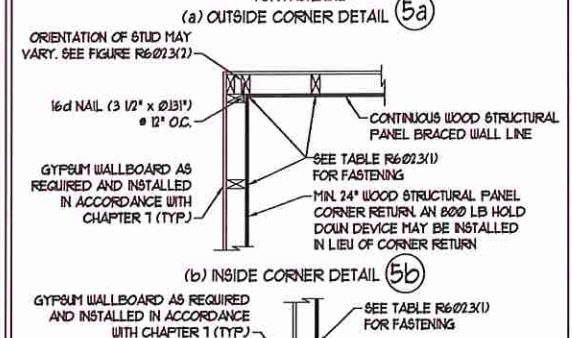
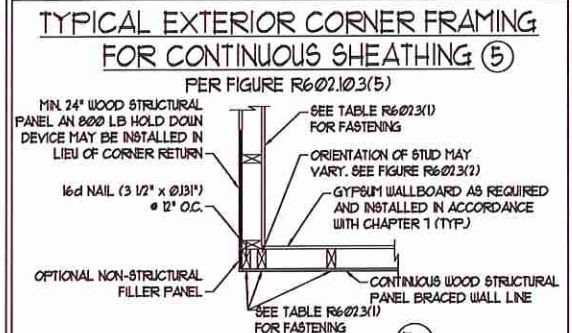
NOTE: GROUT BOND BEAMS AND ALL CELLS WHICH CONTAIN REBAR THREADED RODS AND ANCHOR BOLTS
MASONRY STEM WALLS SUPPORTING BRACED WALL PANELS ②
 PER FIGURE R602.10.4.3



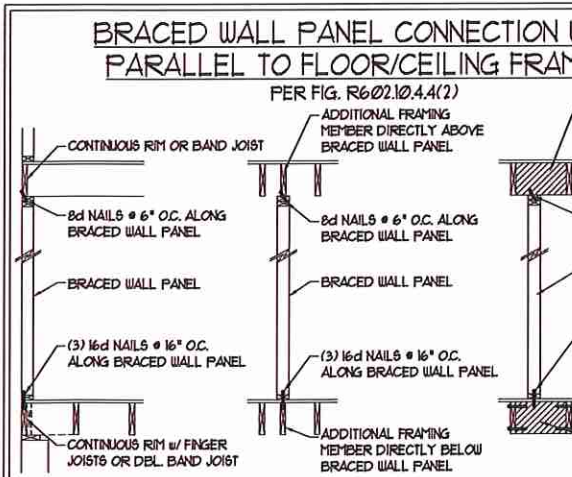
BRACED WALL PANEL CONNECTION WHEN PERPENDICULAR TO FLOOR/CEILING FRAMING ③
 PER FIGURE R602.10.4.4(1)



HOLD DOWN DETAIL FOR MASONRY FOUNDATION OR MONOLITHIC SLAB ④
 * APPLICABLE ONLY WHERE SPECIFIED ON PLAN *

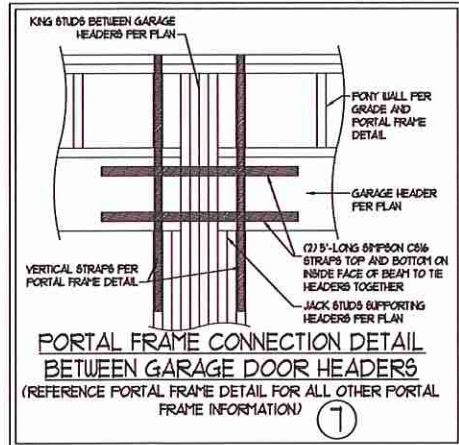


(c) GARAGE DOOR CORNER DETAIL (SEE PLAN FOR ADDITIONAL STRUCTURAL INFORMATION OR ALTERNATE CONFIGURATIONS)

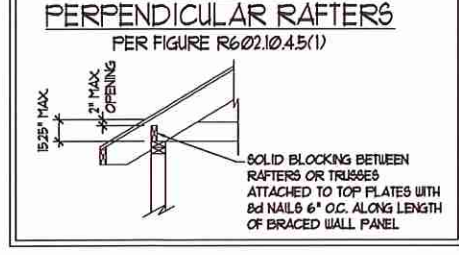


BRACED WALL PANEL CONNECTION WHEN PARALLEL TO FLOOR/CEILING FRAMING ⑥
 PER FIG. R602.10.4.4(2)

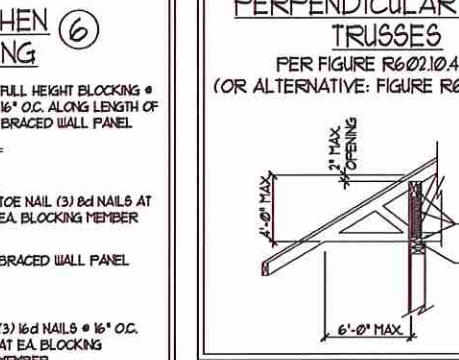
This sealed page is to be used in conjunction with a full plan set engineered by J.S. Thompson Engineering, Inc. only. Use of this individual sealed page within architectural pages or shop drawings by others is a punishable offense under N.C. Statute § 89C-23



PORTAL FRAME CONNECTION DETAIL BETWEEN GARAGE DOOR HEADERS ⑦
 (REFERENCE PORTAL FRAME DETAIL FOR ALL OTHER PORTAL FRAME INFORMATION)



BRACED WALL PANEL CONNECTION TO PERPENDICULAR RAFTERS ⑧
 PER FIGURE R602.10.4.5(1)



BRACED WALL PANEL CONNECTION TO PERPENDICULAR ROOF TRUSSES ⑨
 PER FIGURE R602.10.4.5(3) (OR ALTERNATIVE: FIGURE R602.10.4.5(2))

J.S. THOMPSON ENGINEERING, INC.
 606 WADE AVE., SUITE 104 RALEIGH, NC 27605
 PHONE: (919) 789-9919 FAX: (919) 789-9921
 N.C. LICENSE NO.: C-1733

120 MPH - 130 MPH ULTIMATE DESIGN WIND SPEED
 WALL BRACING NOTES AND DETAILS

DATE: NOVEMBER 14, 2018
 SCALE: 1/4" = 1'-0"
 DRAWN BY: JST
 ENGINEERED BY: JST



GENERAL NOTES

- ENGINEER'S SEAL APPLIES ONLY TO STRUCTURAL COMPONENTS INCLUDING ROOF RAFTERS, HIPS, VALLEYS, RIDGES, FLOORS, WALLS, BEAMS, HEADERS, COLUMNS, CANTILEVERS, OFFSET LOAD BEARING WALLS, PIERS, GIRDER SYSTEM AND FOOTING. ENGINEER'S SEAL DOES NOT CERTIFY DIMENSIONAL ACCURACY OF ARCHITECTURAL LAYOUT INCLUDING ROOF. ENGINEER'S SEAL DOES NOT APPLY TO I-JOIST OR FLOOR/ROOF TRUSS LAYOUT DESIGN AND ACCURACY.
- ALL CONSTRUCTION SHALL CONFORM TO THE LATEST REQUIREMENTS OF THE NORTH CAROLINA RESIDENTIAL CODE (NRC), 2018 EDITION, PLUS ALL LOCAL CODES AND REGULATIONS. THE STRUCTURAL ENGINEER IS NOT RESPONSIBLE FOR, AND WILL NOT HAVE CONTROL OF, CONSTRUCTION MEANS, METHODS, TECHNIQUES, SEQUENCES OR PROCEDURES, OR SAFETY PRECAUTIONS AND PROGRAMS IN CONNECTION WITH THE CONSTRUCTION WORK. NOR WILL THE ENGINEER BE RESPONSIBLE FOR THE CONTRACTOR'S FAILURE TO CARRY OUT THE CONSTRUCTION WORK IN ACCORDANCE WITH THE CONTRACT DOCUMENTS.
- STRUCTURAL DESIGN BASED ON THE PROVISIONS OF THE NRC, 2018 EDITION (R3014 - R3017)

DESIGN CRITERIA:	LIVE LOAD (PSF)	DEAD LOAD (PSF)	DEFLECTION (IN)
ATTIC WITH LIMITED STORAGE	20	10	L/240 (L/360 w/ BRITTLE FINISHES)
ATTIC WITHOUT STORAGE	10	10	L/360
DECKS	40	10	L/360
EXTERIOR BALCONIES	40	10	L/360
FIRE ESCAPES	40	10	L/360
HANDRAILS/GUARDRAILS	200 LB OR 50 (PLF)	10	L/360
PASSENGER VEHICLE GARAGE	50	10	L/360
ROOMS OTHER THAN SLEEPING ROOM	40	10	L/360
SLEEPING ROOMS	30	10	L/360
STAIRS	40	10	L/360
WIND LOAD	(BASED ON TABLE R3012(4) WIND ZONE AND EXPOSURE)		
GROUND SNOW LOAD, Pg	20 (PSF)		

- I-JOIST SYSTEMS DESIGNED WITH 12 PSF DEAD LOAD AND DEFLECTION (IN) OF L/480
- FLOOR TRUSS SYSTEMS DESIGNED WITH 15 PSF DEAD LOAD

- FOR 15 AND 20 MPH WIND ZONES, FOUNDATION ANCHORAGE IS TO COMPLY WITH SECTION R4031.6 OF THE NRC, 2018 EDITION. FOR 30 MPH, 40 MPH, AND 50 MPH WIND ZONES, FOUNDATION ANCHORAGE IS TO COMPLY WITH SECTION 4504 OF THE NRC, 2018 EDITION.
- ENERGY EFFICIENCY COMPLIANCE AND INSULATION VALUES OF THE BUILDING TO BE IN ACCORDANCE WITH CHAPTER 11 OF THE NRC, 2018 EDITION.

FOOTING AND FOUNDATION NOTES

- FOUNDATION DESIGN BASED ON A MINIMUM ALLOWABLE BEARING CAPACITY OF 2000 PSF. CONTACT GEOTECHNICAL ENGINEER FOR BEARING CAPACITY IS NOT ACHIEVED.
- FOR ALL CONCRETE SLABS AND FOOTINGS, THE AREA WITHIN THE PERIMETER OF THE BUILDING ENVELOPE SHALL HAVE ALL VEGETATION, TOP SOIL AND FOREIGN MATERIAL REMOVED. FILL MATERIAL SHALL BE FREE OF VEGETATION AND FOREIGN MATERIAL. THE FILL SHALL BE COMPACTED TO ASSURE UNIFORM SUPPORT OF THE SLAB, AND EXCEPT WHERE APPROVED, THE FILL DEPTHS SHALL NOT EXCEED 24" FOR CLEAN SAND OR GRAVEL. A 4" THICK BASED COURSE CONSISTING OF CLEAN GRADED SAND OR GRAVEL SHALL BE PLACED. A BASE COURSE IS NOT REQUIRED WHERE A CONCRETE SLAB IS INSTALLED ON WELL-DRAINED OR SAND-GRAVEL MIXTURE SOILS CLASSIFIED AS GROUP 1, ACCORDING TO THE UNITED SOIL CLASSIFICATION SYSTEM IN ACCORDANCE WITH TABLE R4021 OF THE NRC, 2018 EDITION.
- PROPERLY DEWATER EXCAVATION PRIOR TO POURING CONCRETE WHEN BOTTOM OF CONCRETE SLAB IS AT OR BELOW WATER TABLE. IF APPLICABLE, 3/4" - 1" DEEP CONTROL JOINTS ARE TO BE SALED WITHIN 4 TO 12 HOURS OF CONCRETE FINISHING AND WALL LOCATIONS HAVE BEEN MARKED. ADJUST WHERE NECESSARY.
- CONCRETE SHALL CONFORM TO SECTION R4022 OF THE NRC, 2018 EDITION. CONCRETE REINFORCING STEEL TO BE ASTM A615 GRADE 60, WELDED WIRE FABRIC TO BE ASTM A105. MAINTAIN A MINIMUM CONCRETE COVER AROUND REINFORCING STEEL OF 3" IN FOOTINGS AND 1/2" IN SLABS. FOR POURED CONCRETE WALLS, CONCRETE COVER FOR REINFORCING STEEL MEASURED FROM THE INSIDE FACE OF THE WALL SHALL NOT BE LESS THAN 3/4". CONCRETE COVER FOR REINFORCING STEEL MEASURED FROM THE OUTSIDE FACE OF THE WALL SHALL NOT BE LESS THAN 1 1/2" FOR #5 BARS OR SMALLER, AND NOT LESS THAN 2" FOR #6 BARS OR LARGER.
- MASONRY UNITS TO CONFORM TO ACE 530/ASCE 5/TMS 402. MORTAR SHALL CONFORM TO ASTM C710.
- THE UNSUPPORTED HEIGHT OF MASONRY PIERS SHALL NOT EXCEED FOUR TIMES THEIR LEAST DIMENSION FOR UNFILLED HOLLOW CONCRETE MASONRY UNITS AND TEN TIMES THEIR LEAST DIMENSION FOR SOLID OR SOLID FILLED PIERS. PIERS MAY BE FILLED SOLID WITH CONCRETE OR TYPE M OR S MORTAR. PIERS AND WALLS SHALL BE CAPPED WITH 8" OF SOLID MASONRY.
- THE CENTER OF EACH OF THE PIERS SHALL BEAR IN THE MIDDLE THIRD OF ITS RESPECTIVE FOOTING. EACH GIRDER SHALL BEAR IN THE MIDDLE THIRD OF THE PIERS.
- ALL CONCRETE AND MASONRY FOUNDATION WALLS ARE TO BE CONSTRUCTED IN ACCORDANCE WITH THE PROVISIONS OF SECTION R404 OF THE NRC, 2018 EDITION OR IN ACCORDANCE WITH ACI 318, ACI 332, NCM1 TR68-A OR ACE 530/ASCE 5/TMS 402. MASONRY FOUNDATION WALLS ARE TO BE REINFORCED PER TABLE R4041X(1), R4041X(2), R4041X(3), OR R4041X(4) OF THE NRC, 2018 EDITION. CONCRETE FOUNDATION WALLS ARE TO BE REINFORCED PER TABLE R4041X(5) OF THE NRC, 2018 EDITION. STEP CONCRETE FOUNDATION WALLS TO 2 x 6 FRAMED WALLS AT 16" O.C. WHERE GRADE PERMITS (UNO).

This sealed page is to be used in conjunction with a full plan set engineered by J.S. Thompson Engineering, Inc. only. Use of this individual sealed page within architectural pages or shop drawings by others is a punishable offense under N.C. Statute § 89C-23

FRAMING NOTES

- ALL FRAMING LUMBER SHALL BE 2" 6FF MINIMUM (Fb = 875 PSI, Fv = 375 PSI, E = 1600000 PSI) UNLESS NOTED OTHERWISE (UNO). ALL TREATED LUMBER SHALL BE 2" 6YF MINIMUM (Fb = 975 PSI, Fv = 475 PSI, E = 1600000 PSI) UNLESS NOTED OTHERWISE (UNO).
- LAMINATED VENEER LUMBER (LVL) SHALL HAVE THE FOLLOWING MINIMUM PROPERTIES: Fb = 2600 PSI, Fv = 285 PSI, E = 1300000 PSI. LAMINATED STRAND LUMBER (LSL) SHALL HAVE THE FOLLOWING MINIMUM PROPERTIES: Fb = 2375 PSI, Fv = 310 PSI, E = 1500000 PSI. PARALLEL STRAND LUMBER (PSL) UP TO 1" DEPTH SHALL HAVE THE FOLLOWING MINIMUM PROPERTIES: Fc = 2500 PSI, E = 1000000 PSI. PARALLEL STRAND LUMBER (PSL) MORE THAN 1" DEPTH SHALL HAVE THE FOLLOWING MINIMUM PROPERTIES: Fc = 2300 PSI, E = 2000000 PSI. INSTALL ALL CONNECTIONS PER MANUFACTURER'S SPECIFICATIONS.
- STRUCTURAL STEEL SHALL CONFORM TO THE FOLLOWING ASTM SPECIFICATIONS:

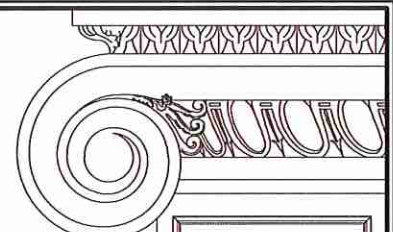
A. W AND WT SHAPES:	ASTM A992
B. CHANNELS AND ANGLES:	ASTM A36
C. PLATES AND BARS:	ASTM A36
D. HOLLOW STRUCTURAL SECTIONS:	ASTM A500 GRADE B
E. STEEL PIPE:	ASTM A53, GRADE B, TYPE E OR S

- STEEL BEAMS SHALL BE SUPPORTED AT EACH END WITH A MINIMUM BEARING LENGTH OF 3 1/2" AND FULL FLANGE WIDTH (UNO). PROVIDE SOLID BEARING FROM BEAM SUPPORT TO FOUNDATION. BEAMS SHALL BE ATTACHED AT THE BOTTOM FLANGE TO EACH SUPPORT AS FOLLOWS (UNO):

A. WOOD FRAMING	(2) 1/2" DIA. x 4" LONG LAG SCREWS
B. CONCRETE	(2) 1/2" DIA. x 4" WEDGE ANCHORS
C. MASONRY (FULLY GROUTED)	(2) 1/2" DIA. x 4" LONG SIMPSON TITEN HD ANCHORS

LATERAL SUPPORT IS CONSIDERED ADEQUATE PROVIDING THE JOISTS ARE TOE NAILED TO THE 2x NAILER ON TOP OF THE STEEL BEAM, AND THE 2x NAILER IS SECURED TO THE TOP OF THE STEEL BEAM w/ (2) ROWS OF SELF TAPPING SCREWS @ 16" O.C. OR (2) ROWS OF 1/2" DIAMETER BOLTS @ 16" O.C. IF 1/2" BOLTS ARE USED TO FASTEN THE NAILER, THE STEEL BEAM SHALL BE FABRICATED w/ (2) ROWS OF 3/16" DIAMETER HOLES @ 16" O.C.

- SQUARES DENOTE POINT LOADS WHICH REQUIRE SOLID BLOCKING TO GIRDER OR FOUNDATION. SHADED SQUARES DENOTE POINT LOADS FROM ABOVE WHICH REQUIRE SOLID BLOCKING TO SUPPORTING MEMBER BELOW.
- ALL LOAD BEARING HEADERS TO CONFORM TO TABLE R602.1(1) AND R602.1(2) OF THE NRC, 2018 EDITION OR BE (1) 2 x 6 WITH (1) JACK AND (1) KING STUD EACH END (UNO), WHICHEVER IS GREATER. ALL HEADERS TO BE SECURED TO EACH JACK STUD WITH (4) 8d NAILS. ALL BEAMS TO BE SUPPORTED WITH (2) STUDS AT EACH BEARING POINT (UNO). INSTALL KING STUDS PER SECTION R602.15 OF THE NORTH CAROLINA RESIDENTIAL CODE, 2018 EDITION.
- ALL BEAMS, HEADERS, OR GIRDER TRUSSES PARALLEL TO WALL ARE TO BEAR FULLY ON (1) JACK OR (2) STUDS MINIMUM OR THE NUMBER OF JACKS OR STUDS NOTED. ALL BEAMS OR GIRDER TRUSSES PERPENDICULAR TO WALL AND SUPPORTED BY (3) STUDS OR LESS ARE TO HAVE 1 1/2" MINIMUM BEARING (UNO). ALL BEAMS OR GIRDER TRUSSES PERPENDICULAR TO WALL AND SUPPORTED BY MORE THAN (3) STUDS OR OTHER NOTED COLUMN ARE TO BEAR FULLY ON SUPPORT COLUMN FOR ENTIRE WALL DEPTH (UNO). BEAM ENDS THAT BUTT INTO ONE ANOTHER ARE TO EACH BEAR EQUAL LENGTHS (UNO).
- FLITCH BEAMS SHALL BE BOLTED TOGETHER USING 1/2" DIAMETER BOLTS (ASTM A307) WITH WASHERS PLACED AT THREADED END OF BOLT. BOLTS SHALL BE SPACED AT 24" CENTERS (MAXIMUM), AND STAGGERED AT TOP AND BOTTOM OF BEAM (2" EDGE DISTANCE), WITH (2) BOLTS LOCATED AT 6" FROM EACH END (UNO).
- ALL I-JOIST OR TRUSS LAYOUTS ARE TO BE IN COMPLIANCE WITH THE OVERALL DESIGN SPECIFIED ON THE PLANS. ALL DEVIATIONS ARE TO BE BROUGHT TO THE ATTENTION OF THE ENGINEER OF RECORD PRIOR TO INSTALLATION.
- BRACED WALL PANELS SHALL BE CONSTRUCTED ACCORDING TO THE NORTH CAROLINA RESIDENTIAL CODE 2018 EDITION WALL BRACING CRITERIA. THE AMOUNT, LENGTH, AND LOCATION OF BRACING SHALL COMPLY WITH ALL APPLICABLE TABLES IN SECTION R602.10.
- PROVIDE DOUBLE JOIST UNDER ALL WALLS PARALLEL TO FLOOR JOISTS. PROVIDE SUPPORT UNDER ALL WALLS PARALLEL TO FLOOR TRUSSES OR I-JOISTS PER MANUFACTURER'S SPECIFICATIONS. INSTALL BLOCKING BETWEEN JOISTS OR TRUSSES FOR POINT LOAD SUPPORT FOR ALL POINT LOADS ALONG OFFSET LOAD LINES.
- FOR ALL HEADERS SUPPORTING BRICK VENEER THAT ARE LESS THAN 8'-0" IN LENGTH, REST A 6" x 4" x 5/16" STEEL ANGLE WITH 6" MINIMUM EMBEDMENT AT SIDES FOR BRICK SUPPORT (UNO). FOR ALL HEADERS 8'-0" AND GREATER IN LENGTH, BOLT A 6" x 4" x 5/16" STEEL ANGLE TO HEADER WITH 1/2" LAG SCREWS AT 12" O.C. STAGGERED FOR BRICK SUPPORT. FOR ALL BRICK SUPPORT AT ROOF LINES, BOLT A 6" x 4" x 5/16" STEEL ANGLE TO (2) 2 x 10 BLOCKING INSTALLED w/ (4) 12d NAILS EA. FLY BETWEEN WALL STUDS WITH (2) ROWS OF 1/2" LAG SCREWS AT 12" O.C. STAGGERED AND IN ACCORDANCE WITH SECTION R103.2(1) OF THE NRC, 2018 EDITION.
- FOR STICK FRAMED ROOFS: CIRCLES DENOTE (3) 2 x 4 POSTS FOR ROOF MEMBER SUPPORT. HIP SPLICES ARE TO BE SPACED A MINIMUM OF 8'-0". FASTEN MEMBERS WITH THREE ROWS OF 12d NAILS AT 16" O.C. FRAME DORMER WALLS ON TOP OF DOUBLE OR TRIPLE RAFTERS AS SHOWN (UNO).
- FOR TRUSSED ROOFS: FRAME DORMER WALLS ON TOP OF 2 x 4 LADDER FRAMING AT 24" O.C. BETWEEN ADJACENT ROOF TRUSSES. STICK FRAME OVER-FRAMED ROOF SECTIONS WITH 2 x 8 RIDGES, 2 x 6 RAFTERS AT 16" O.C. AND FLAT 2 x 10 VALLEYS (UNO).
- ALL 4 x 4 AND 6 x 6 POSTS TO BE INSTALLED WITH 1000 LB CAPACITY UPLIFT CONNECTORS TOP AND BOTTOM (UNO). POSTS MAY BE SECURED USING ONE SIMPSON H6 OR L752 UPLIFT CONNECTOR FASTENED TO THE BAND AT THE BOTTOM AND THE BEAM AT THE TOP OF EACH POST. ONE 16" SECTION OF SIMPSON C86 COIL STRAPPING WITH (8) 8d HDG NAILS AT EACH END MAY BE USED IN LIEU OF EACH TRUSS STRAP IF DESIRED. FOR MASONRY OR CONCRETE FOUNDATION USE SIMPSON POST BASE.



J.S. THOMPSON ENGINEERING, INC.
 606 WADE AVE., SUITE 104 RALEIGH, NC 27605
 PHONE: (919) 789-9919 FAX: (919) 789-9921
 N.C. LICENSE NO.: C-1733

120 MPH - 130 MPH ULTIMATE DESIGN WIND SPEED
 STANDARD STRUCTURAL NOTES

DATE: NOVEMBER 14, 2018
SCALE: 1/4" = 1'-0"
DRAWN BY: JES
ENGINEERED BY: JST

