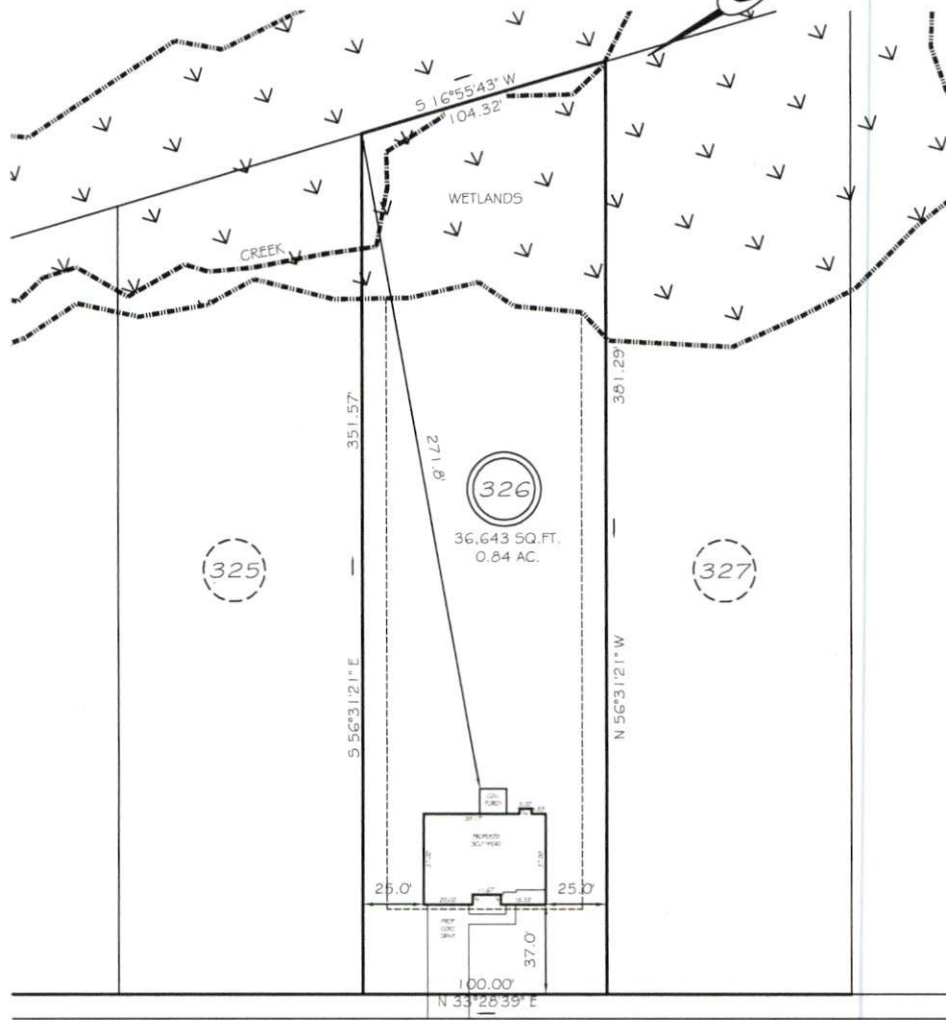


I, MICHAEL P. GRIFFIN, certify that under my direction and supervision this map was drawn from an actual field survey; that the error of closure of the survey as calculated by coordinates is 1:10,000+; that the area shown hereon was calculated by coordinates.  
 Witness my hand and seal this day of MONTH 2021.

NF  
 M/JM(NC), LLC.  
 DB 2881, PG 145  
 PB 2005, PG 703  
 ZONING: RA-20R

PK 2013 PG 346-347  
 HARNETT CO. REGISTRY



KINGWOOD COURT  
 50' RW (PRIVATE & UTILITY ACCESS)

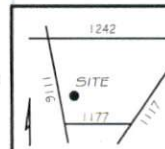
SETBACKS

FRONT	35'
REAR	25'
SIDE	10'
CORNER	20'

LEGEND

**PRELIMINARY**  
 NOT FOR RECORDATION,  
 SALES OR CONVEYANCE

EIP	EXISTING IRON PIPE	FES	FLARED END SECTION
IPS	IRON PIPE SET	WM	WATER METER
RW	RIGHT OF WAY	CO	CLEAN OUT
NF	NOW OR FORMERLY	FH	FIRE HYDRANT
EIS	EXISTING IRON STAKE	CB	CATCH BASIN



**GLS** GRIFFIN LAND SURVEYING, INC.  
 P.O. BOX 148  
 FUQUAY-VARINA, NC 27526  
 (919) - 567-1963

**PLOT PLAN**  
 FOR  
**H & H HOMES**

OAKMONT  
 LOT 326  
 KINGWOOD COURT  
 NORTH CAROLINA  
 HARNETT COUNTY BARBECUE TOWNSHIP

DRAWN BY NMF DATE 4/23/21

CHECKED BY MPG SCALE 1" = 60'