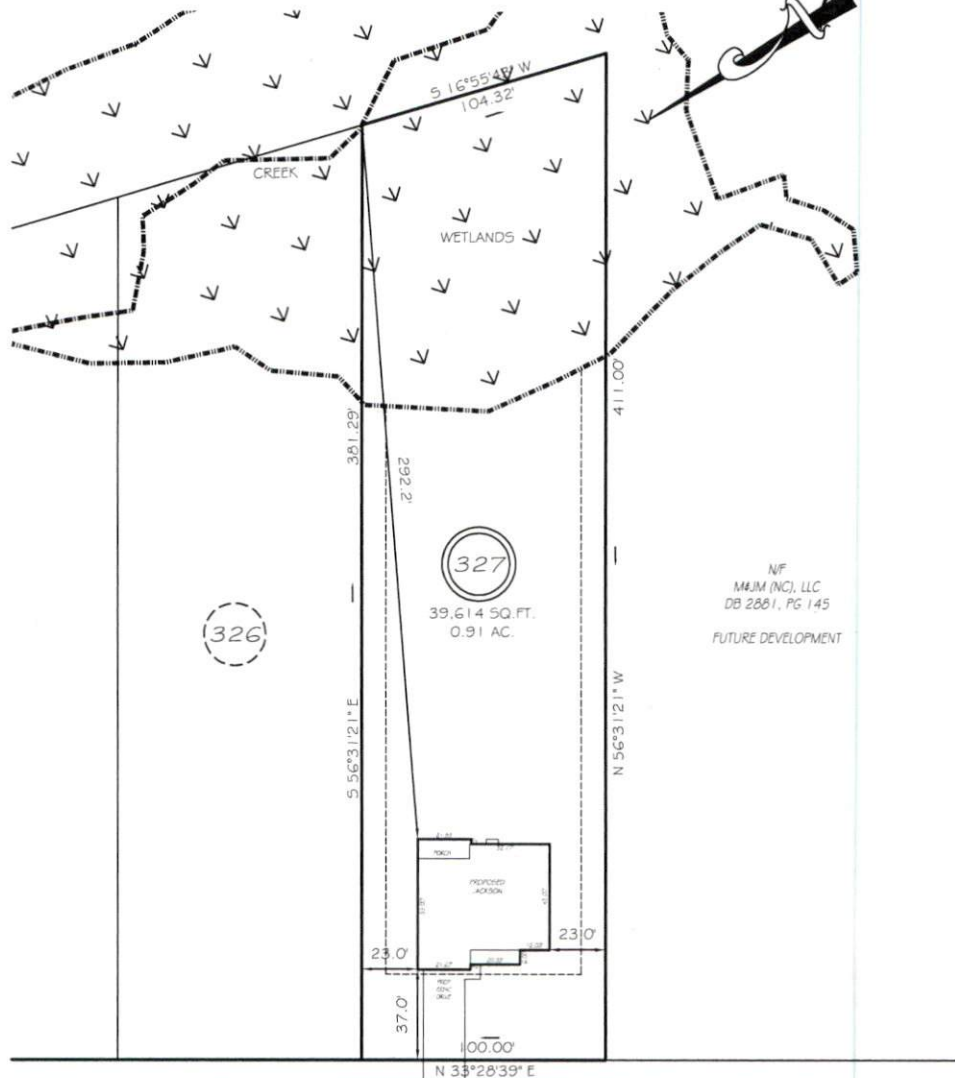


4. MICHAEL P. GRIFFIN, certify that under my direction and supervision this map was drawn from an actual field survey; that the error of closure of the survey as calculated by coordinates is 1: 10,000+; that the area shown hereon was calculated by coordinates.
 Witness my hand and seal this day of MONTH 2021.

NF
 M/JM/NC, LLC.
 DB 2881, PG 145
 PB 2005, PG 703
 ZONING- RA-20R

REC-2015 PG 346-347
 HARNETT CO REGISTRY



NF
 M/JM/NC, LLC
 DB 2881, PG 145
 FUTURE DEVELOPMENT

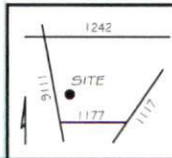
KINGWOOD COURT
 50' RW (PRIVATE & UTILITY ACCESS)

SETBACKS
 FRONT 35'
 REAR 25'
 SIDE 10'
 CORNER 20'

PRELIMINARY
 NOT FOR RECORDATION,
 SALES OR CONVEYANCE

LEGEND

EIP	EXISTING IRON PIPE	FES	FLARED END SECTION
IPS	IRON PIPE SET	WM	WATER METER
RAW	RIGHT OF WAY	CO	CLEAN OUT
N/F	NOW OR FORMERLY	FH	FIRE HYDRANT
EIS	EXISTING IRON STAKE	CB	CATCH BASIN



GLS GRIFFIN LAND SURVEYING, INC.
 P.O. BOX 148
 FUQUAY-VARINA, NC 27526
 (919) - 567 - 1963

PLOT PLAN
 FOR
H & H HOMES
 OAKMONT
 LOT 327
 KINGWOOD COURT
 NORTH CAROLINA
 HARNETT COUNTY BARBECUE TOWNSHIP

DRAWN BY NMF	DATE 4/23/21
CHECKED BY MPG	SCALE 1" = 60'