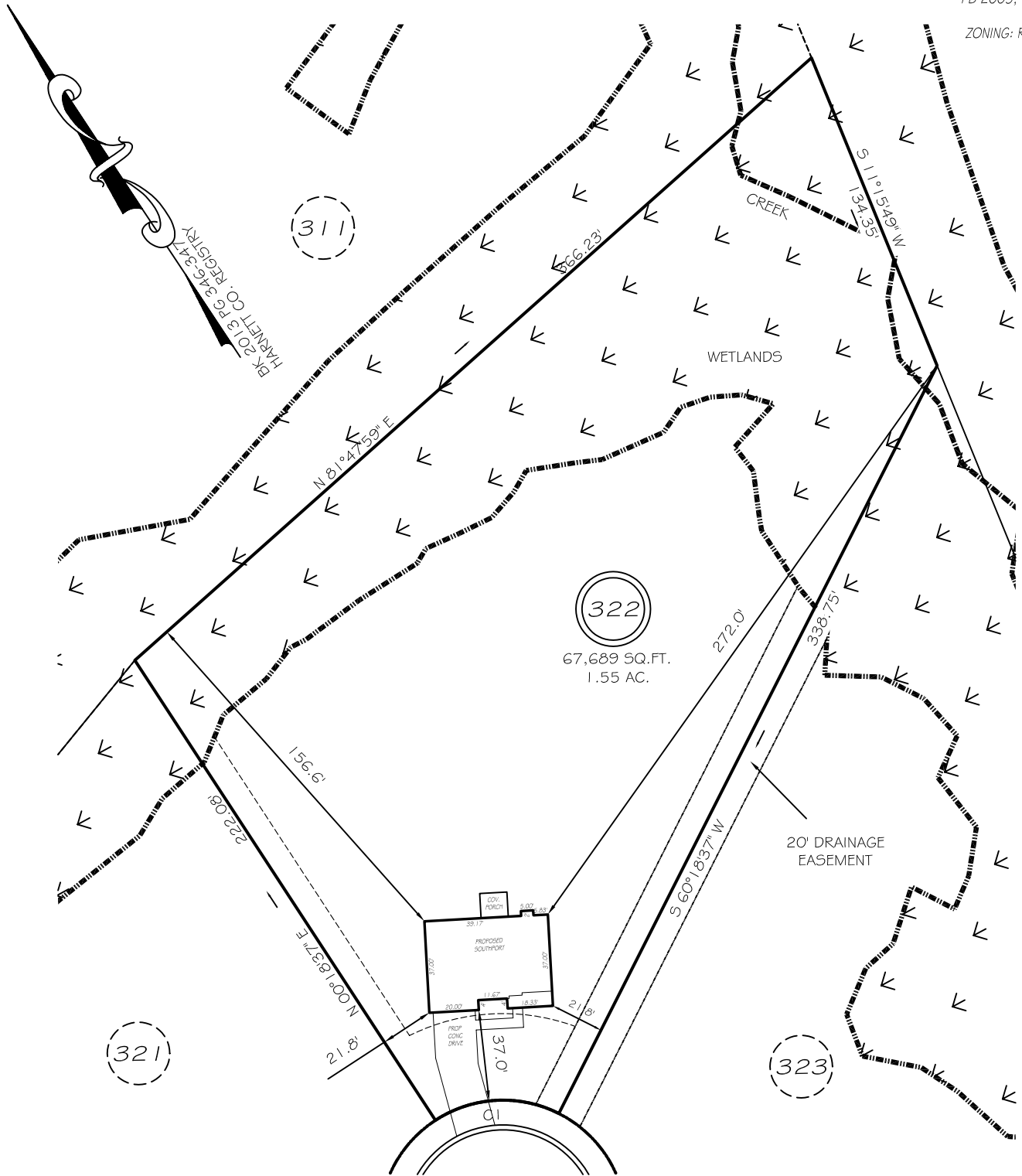


I, MICHAEL P. GRIFFIN, certify that under my direction and supervision this map was drawn from an actual field survey; that the error of closure of the survey as calculated by coordinates is 1: 10,000+; that the area shown hereon was calculated by coordinates.

Witness my hand and seal this day of MONTH 2021.

NF
M#JM(NC), LLC.
DB 2881, PG 145
PB 2005, PG 703

ZONING: RA-20R



KINGWOOD COURT
50' R/W (PRIVATE & UTILITY ACCESS)

SETBACKS

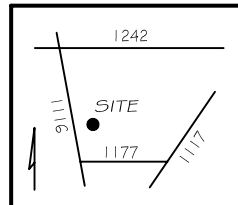
FRONT	35'
REAR	25'
SIDE	10'
CORNER	20'

C.I. R=50.00' L=52.36' N59°41'23"W 50.00'

PRELIMINARY
NOT FOR RECORDATION,
SALES OR CONVEYANCE

LEGEND

EIP	EXISTING IRON PIPE	FES	FLARED END SECTION
IPS	IRON PIPE SET	WM	WATER METER
R/W	RIGHT OF WAY	CO	CLEAN OUT
N/F	NOW OR FORMERLY	FH	FIRE HYDRANT
EIS	EXISTING IRON STAKE	CB	CATCH BASIN



GRIFFIN LAND SURVEYING, INC.

P. O. BOX 148
FUQUAY-VARINA, NC 27526
(919) - 567 - 1963

PLOT PLAN
FOR
H & H HOMES

OAKMONT
LOT 322

KINGWOOD COURT
NORTH CAROLINA
HARNETT COUNTY BARBECUE TOWNSHIP

DRAWN BY **NMF**

DATE **4/23/21**

CHECKED BY **MPG**

SCALE **1" = 60'**