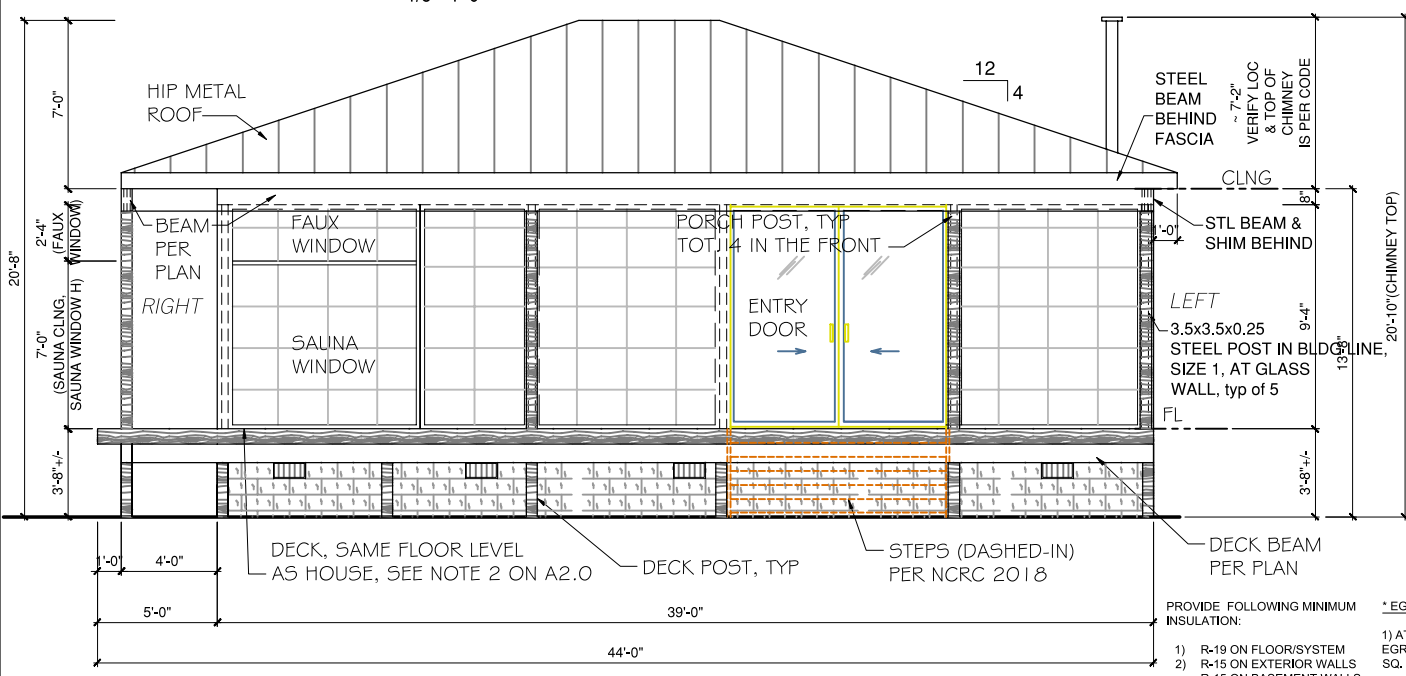
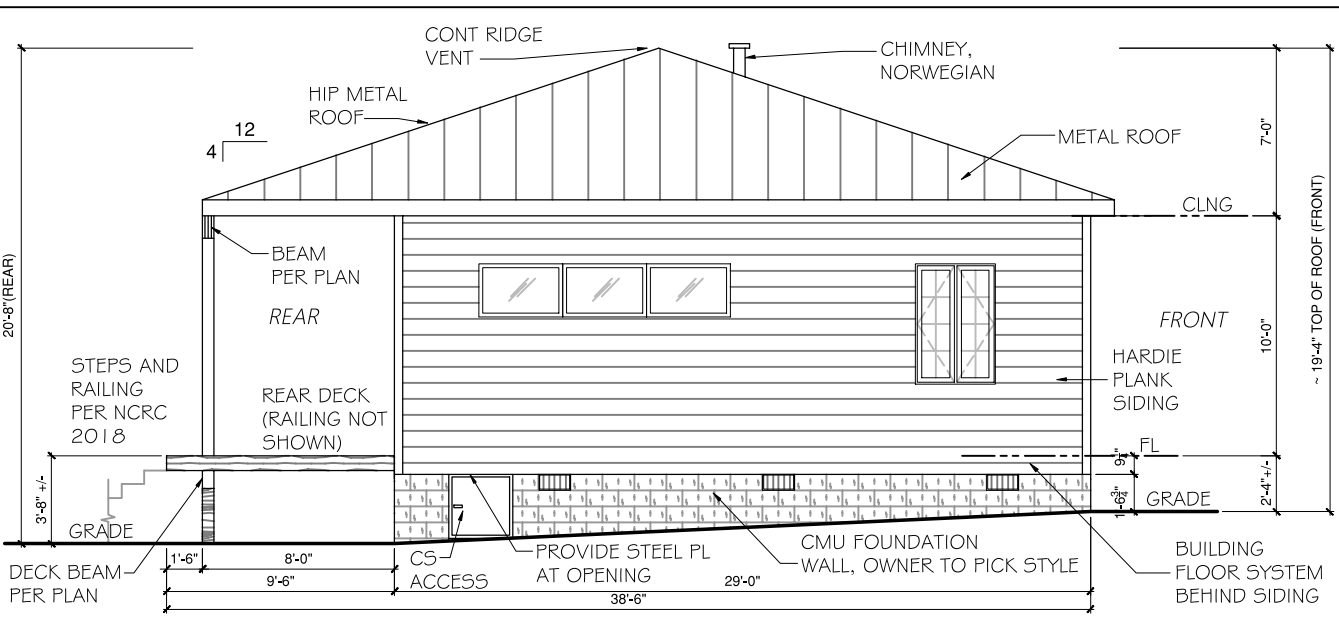


1. FLOOR PLAN
1/8"=1'-0"

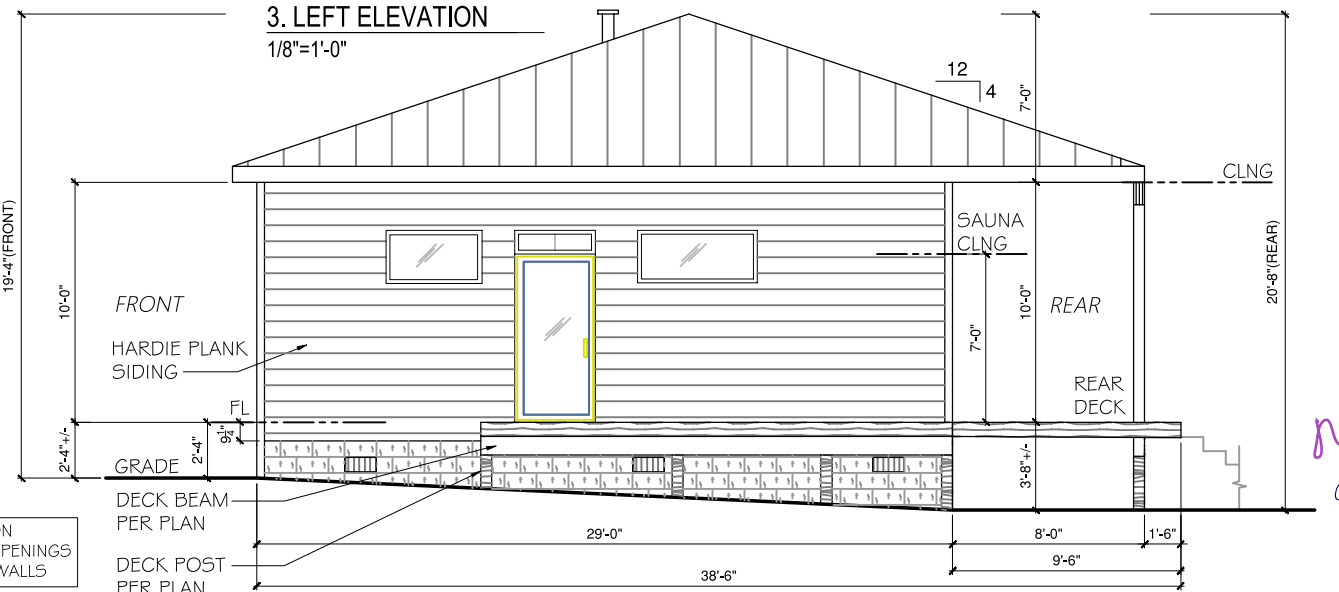


2. REAR ELEVATION
1/8"=1'-0"

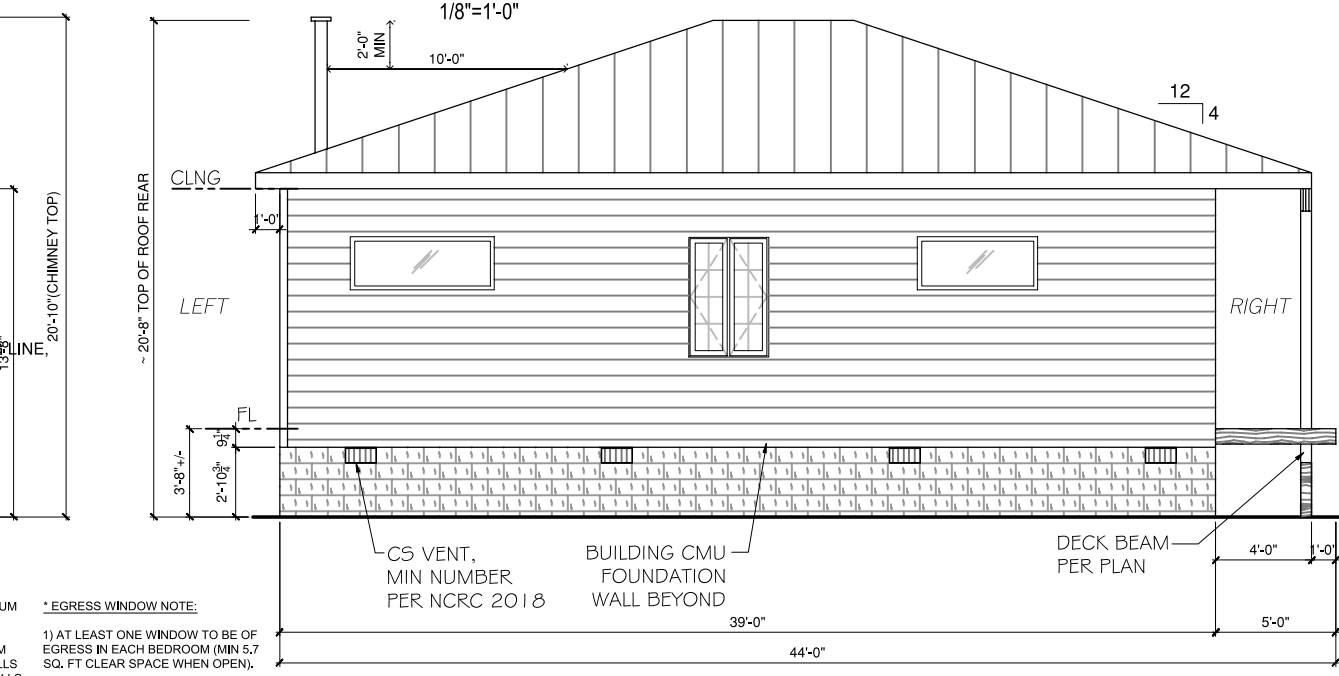
WINDOWS NOTES:
1) PROVIDE AT LEAST 1 EGRESS WINDOW PER BED ROOM.
2) PROVIDE SAFETY GLAZING FOR REAR FULL WALL WINDOWS. REFER TO NCRC 2018 REQUIREMENTS FOR GLASS.



3. LEFT ELEVATION
1/8"=1'-0"



4. RIGHT ELEVATION
1/8"=1'-0"



5. FRONT ELEVATION
1/8"=1'-0"

*EGRESS WINDOW NOTE:
1) AT LEAST ONE WINDOW TO BE OF EGRESS IN EACH BEDROOM (MIN 5.7 SQ. FT CLEAR SPACE WHEN OPEN).
2) PROVIDE SAFETY GLAZING FOR REAR FULL WALL WINDOWS. REFER TO NCRC 2018 REQUIREMENTS FOR GLASS.
3) AT LEAST ONE WINDOW TO BE OF EGRESS IN EACH BEDROOM (MIN 5.7 SQ. FT CLEAR SPACE WHEN OPEN).
4) DEPENDING UPON WINDOW TYPE, i.e. DOUBLE HUNG, CASEMENT AND MANUFACTURER, SHOWN WINDOW DIMENSIONS MAY VARY.

REVISIONS			
NO.	DATE	DESCRIPTIONS	
2	09/22/21	ROOF CONST ON SITE	
1	07/04/21	REVISION	
0	06/14/21	PERMIT	

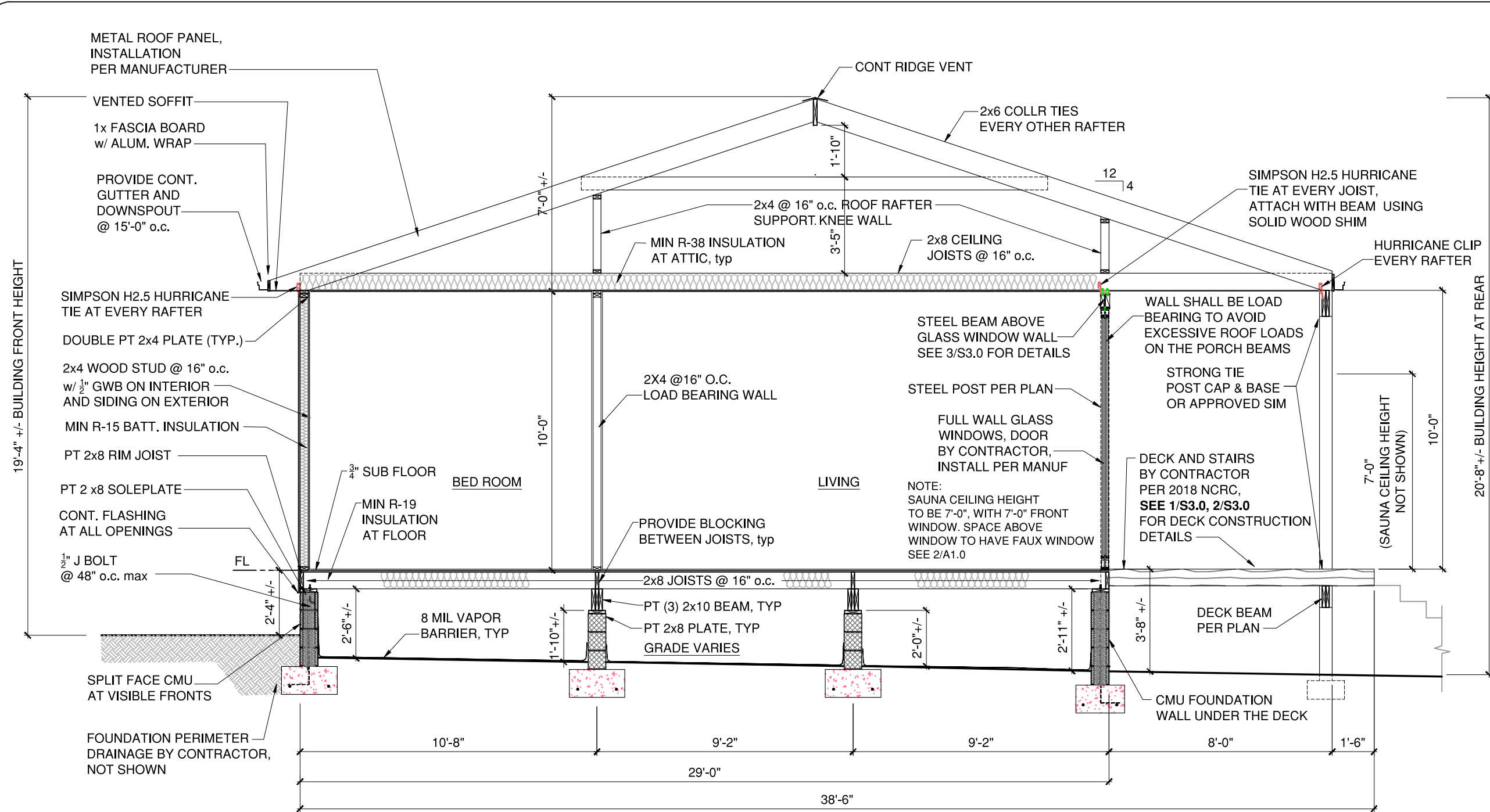
FLOOR PLAN, ELEVATIONS
192 MELS MEADOWS DRIVE
FUQUAY VARINA, NC 27526



EQUAGEN
engineering by ingenuity
FIRM # P-1869
121 EDINBURGH SOUTH DRIVE, SUITE 103
CARY, NC 27511
PHONE: 919.267.3004
EMAIL: INFO@EQUAGEN.COM

DRAWN BY:	DG
CHECKED BY:	MKC
DATE:	05/25/21
SCALE:	AS SHOWN

A1.0 20-2053



1. BUILDING SECTION
1/4"=1'-0"

- NOTES:
- 1) CONTRACTOR TO ENSURE CRAWL SPACE GRADE IS SLOPED AWAY FROM THE HOUSE
 - 2) FINISHED DECK FLOOR CAN BE 2 1/2" +/- LOWER THAN BUILDING FINISHED FLOOR LEVEL FOR ADEQUATE ATTACHMENT OF DECK JOISTS WITH HOUSE RIM BOARD (BAND JOIST). CONTRACTOR TO VERIFY.

REVISIONS	
NO.	DATE
2	09/22/21
1	07/04/21
0	06/14/21

BUILDING SECTION

192 MELS MEADOWS DRIVE
FUQUAY VARINA, NC 27526

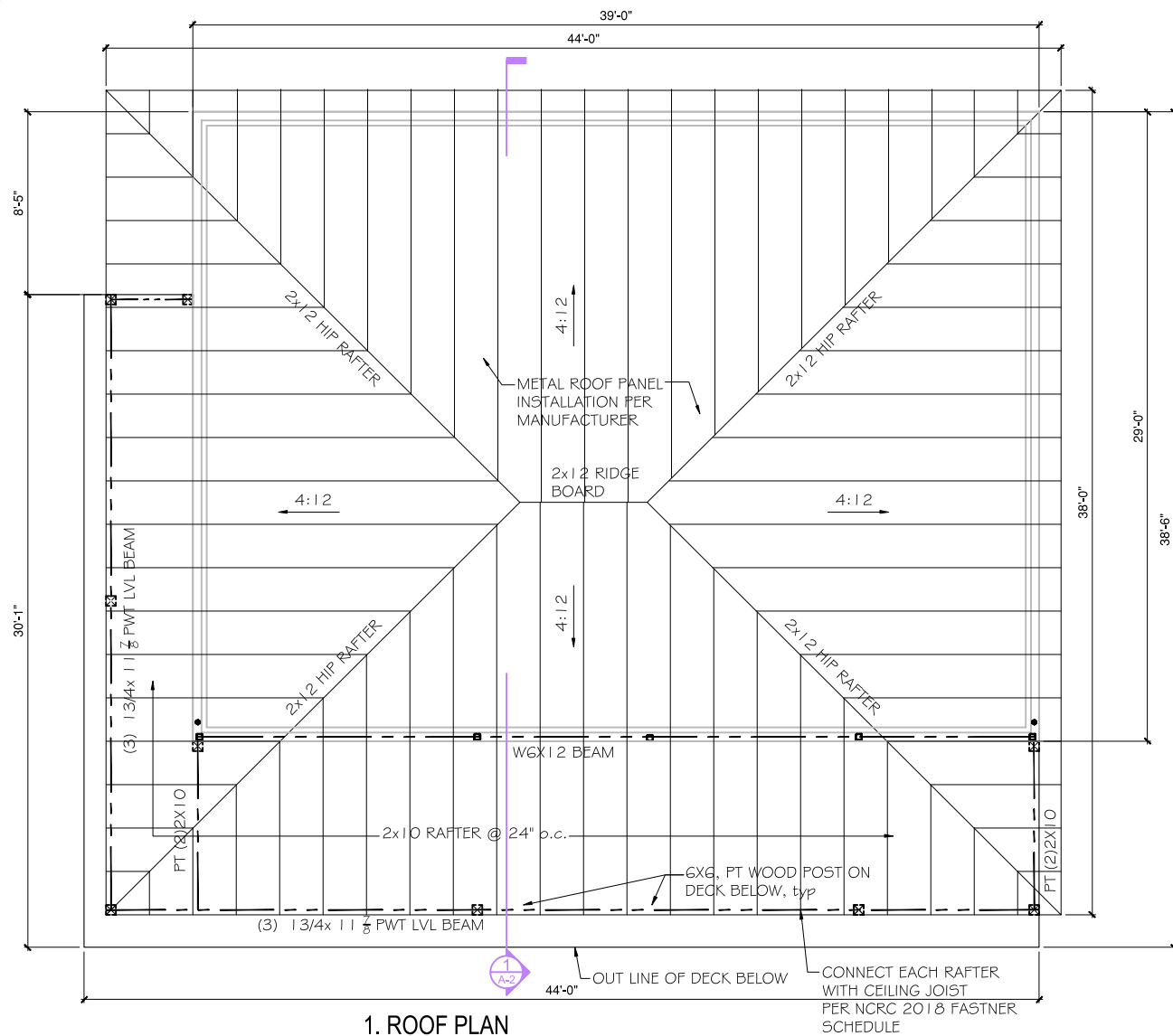


EQUAGEN
engineering by ingenuity

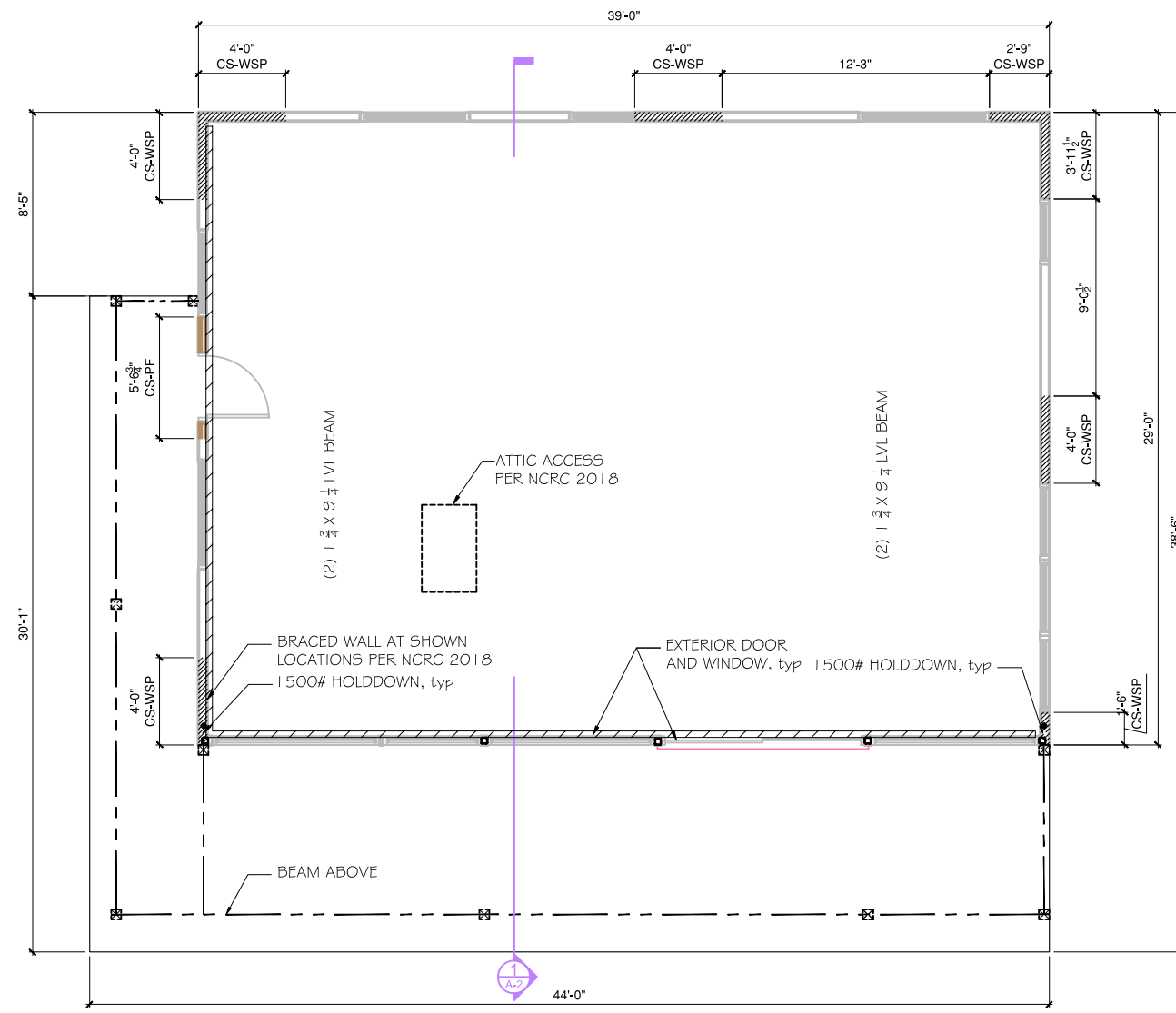
FIRM # P-1869
121 EDINBURGH SOUTH DRIVE, SUITE 103
CARY, NC 27511
PHONE: 919.267.3004
EMAIL: INFO@EQUAGEN.COM

DRAWN BY:	DG
CHECKED BY:	MKC
DATE:	05/25/21
SCALE:	AS SHOWN

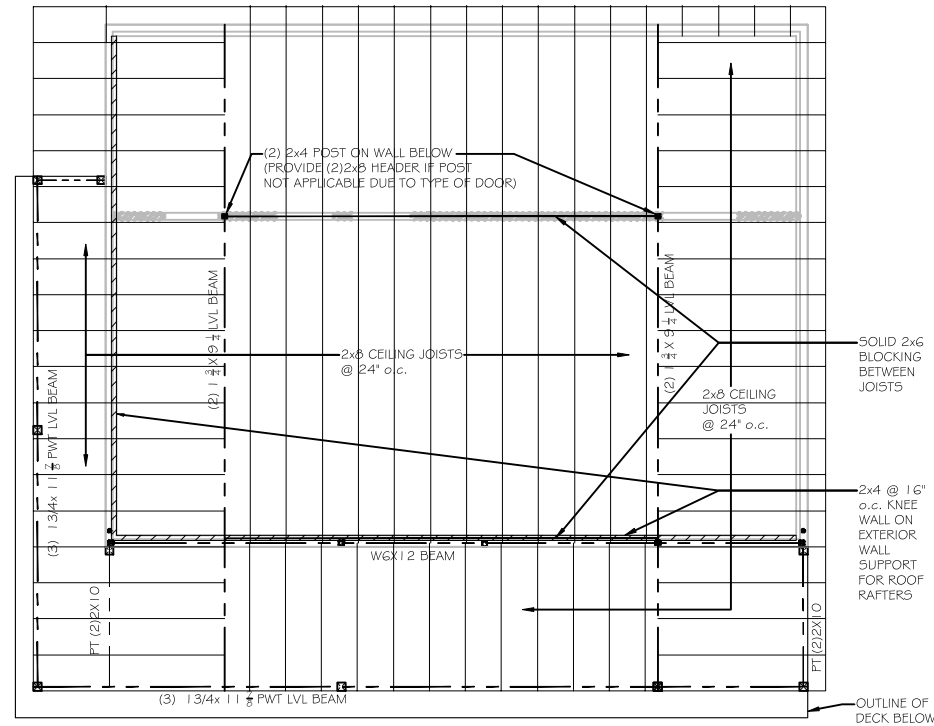
A2.0 20-2053



1. ROOF PLAN
1/8"=1'-0"



2. SHEAR WALL PLAN
1/8"=1'-0"



3. CEILING JOIST PLAN
3/32"=1'-0"

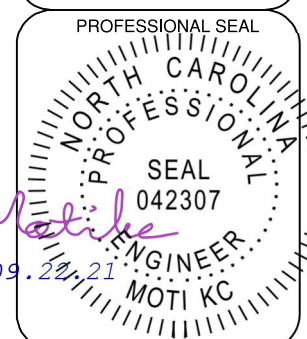
WALL BRACING PLAN NOTES:

1. ON PLAN DENOTES THE LOCATION OF BRACED WALL PANELS. STUD WALL AT BRACED WALL PANEL LOCATIONS SHALL BE A MIN. OF 2x4 SPF #1/#2 AT 16" OC MAXIMUM, UNO. REFER TO SHEETS S4.0 FOR MORE INFO.
2. BRACED WALL PANELS SHALL BE CONNECTED TO FLOOR FRAMING PER SECTION R602.10.4.4 AND BRACED WALL PANELS SHALL BE CONNECTED TO ROOF FRAMING PER R602.10.4.5.

NO.	DATE	DESCRIPTIONS	REVISIONS
2	09/22/21	ROOF CONST ON SITE	
1	07/04/21	REVISION	
0	06/14/21	PERMIT	

ROOF PLAN, SHEAR WALL PLAN

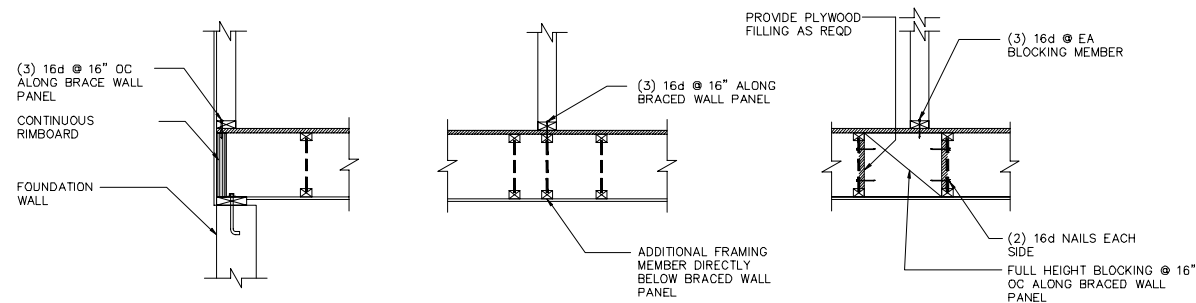
192 MELS MEADOWS DRIVE
FUQUAY VARINA, NC 27526



EQUAGEN
engineering by ingenuity

FIRM # P-1869
121 EDINBURGH SOUTH DRIVE, SUITE 103
CARY, NC 27511
PHONE: 919.267.3004
EMAIL: INFO@EQUAGEN.COM

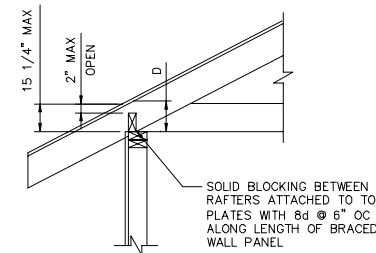
DRAWN BY:	DG
CHECKED BY:	MKC
DATE:	05/25/21
SCALE:	AS SHOWN
S2.0	20-2053



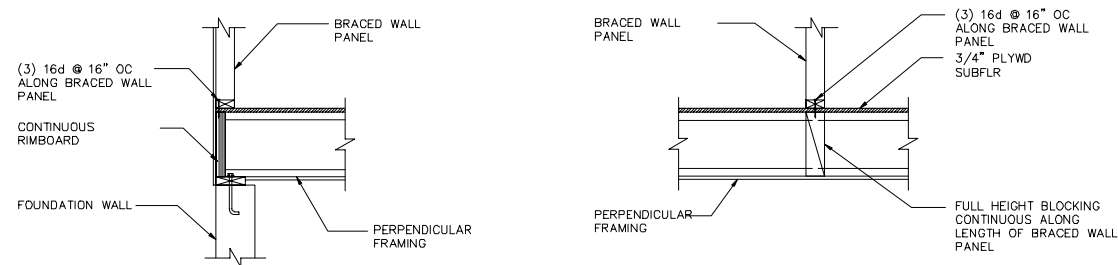
1 BRACED WALL PANEL CONNECTION WHEN PARALLEL TO FLOOR/CEILING FRAMING
SCALE : NTS

ROOF FRAMING BLOCKING		
DISTANCE, D	REQUIREMENT	REF. DETAIL
0 - 9 1/4"	NO BLOCKING REQUIRED	NONE
9 1/4" - 11 1/4"	SOLID 2x BLOCKING BETWEEN RAFTERS OR TRUSSES	DETAIL 3
11 1/4" - 48"	SOFFIT BLOCKING OR VERTICAL BLOCKING PANEL	DETAIL 4 OR DETAIL 5
OVER 48"	ENGINEERED DESIGN REQUIRED	NONE

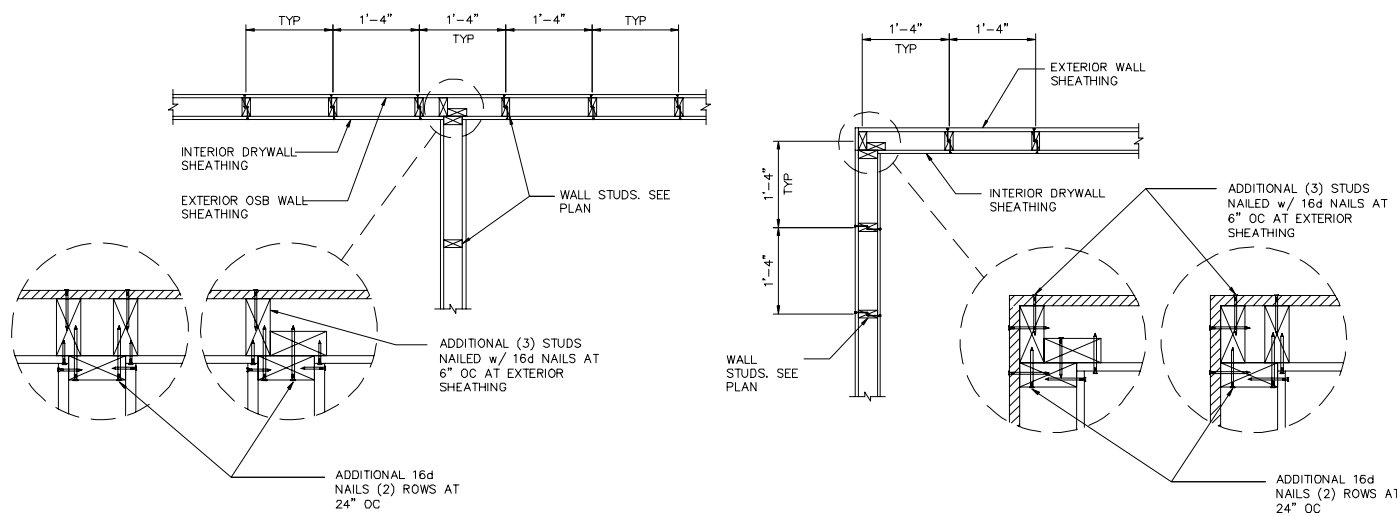
NOTE:
D: DISTANCE FROM TOP OF BRACING UNIT TO TOP OF ROOF SHEATHING



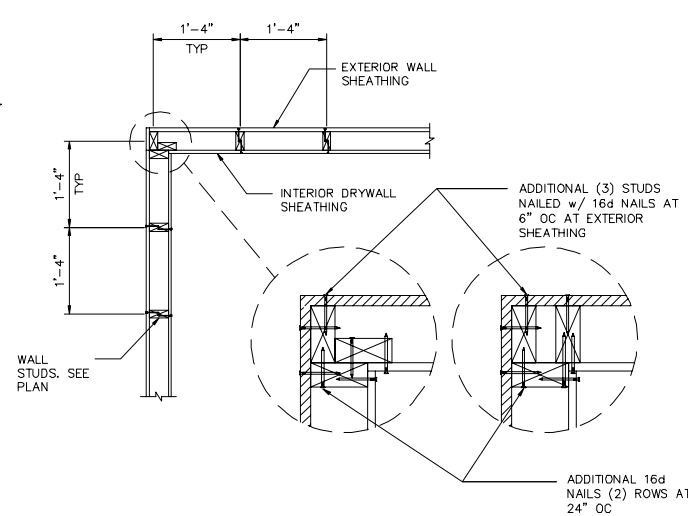
3 BLOCKING BETWEEN ROOF FRAMING MEMBERS
SCALE : NTS



2 BRACED WALL PANEL CONNECTION WHEN PERPENDICULAR TO FLOOR/CEILING FRAMING
SCALE : NTS



6 FRAMING DETAIL AT WALL INTERSECTIONS
SCALE : NTS



7 FRAMING DETAIL AT WALL CORNERS
SCALE : NTS

NOTE: USE WOOD TO METAL SCREWS @ 2" o.c. FOR CORNER HSS POST AND STUD WALL CONNECTION

REVISIONS			
NO.	DATE	DESCRIPTIONS	
2	09/22/21	ROOF CONST ON SITE	
1	07/04/21	REVISION	
0	06/14/21	PERMIT	

WALL, ROOF BRACING DETAILS
192 MELS MEADOWS DRIVE
FUQUAY VARINA, NC 27526



EQUAGEN
engineering by ingenuity
FIRM # P-1869
121 EDINBURGH SOUTH DRIVE, SUITE 103
CARY, NC 27511
PHONE: 919.267.3004
EMAIL: INFO@EQUAGEN.COM

DRAWN BY:	DG
CHECKED BY:	MKC
DATE:	05/25/21
SCALE:	AS SHOWN

S5.0 20-2053