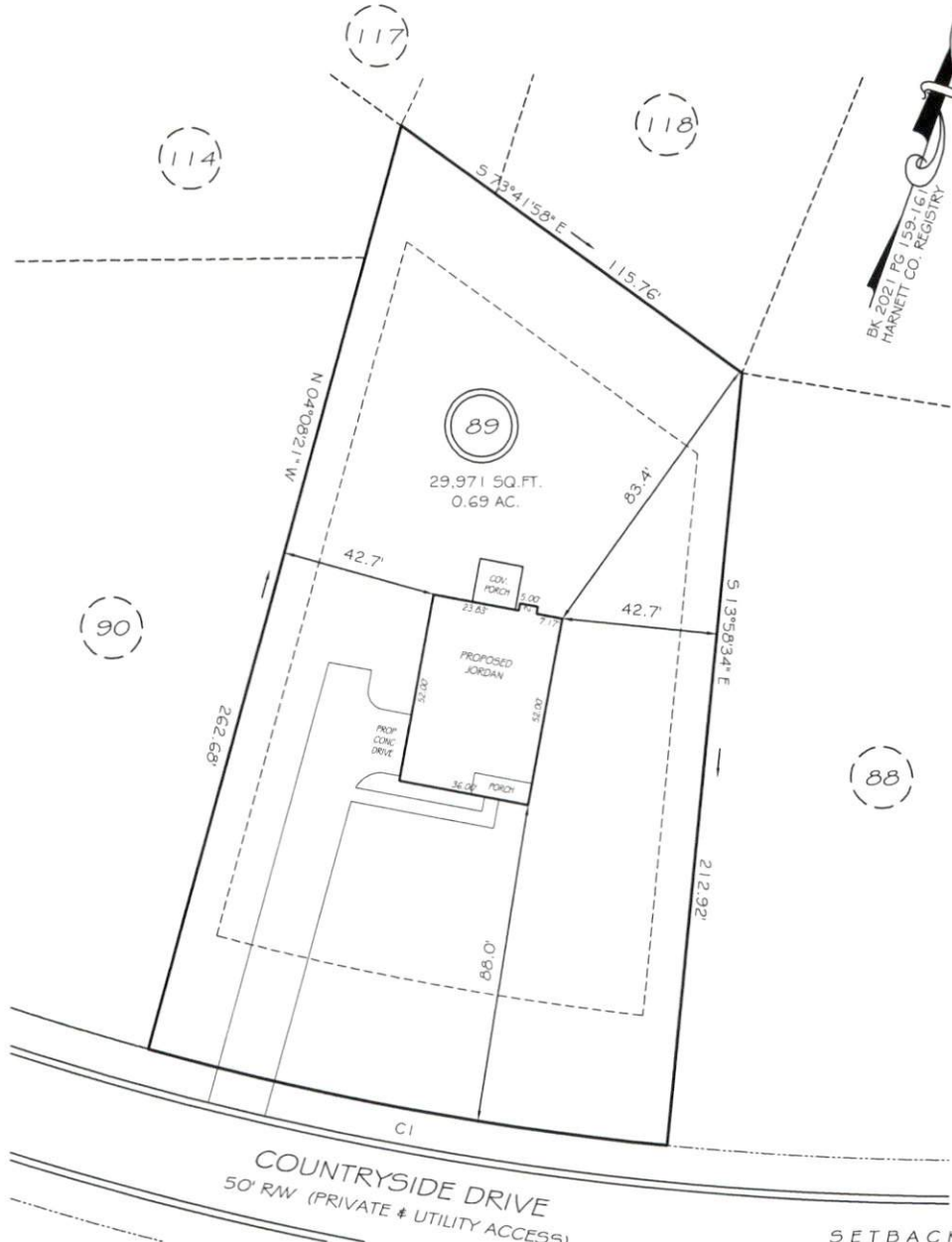


I, MICHAEL P. GRIFFIN, certify that under my direction and supervision this map was drawn from an actual field survey; that the error of closure of the survey as calculated by coordinates is 1:10,000+; that the area shown hereon was calculated by coordinates.
 Witness my hand and seal this day of MONTH 2022.

BK 2021 PG 159-161
 HARNETT CO. REGISTRY



COUNTRYSIDE DRIVE
 50' RW (PRIVATE & UTILITY ACCESS)

SETBACKS

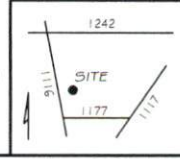
FRONT	35'
REAR	25'
SIDE	10'
CORNER	20'

REVISION: MOVED BACK 6/28/22
 CI R=847.77' L=145.56' N80°56'38"E 145.38'

PRELIMINARY
 NOT FOR RECORDATION,
 SALES OR CONVEYANCE

LEGEND

EIP	EXISTING IRON PIPE	FES	FLARED END SECTION
IPS	IRON PIPE SET	WM	WATER METER
RW	RIGHT OF WAY	CO	CLEAN OUT
N/F	NOW OR FORMERLY	FH	FIRE HYDRANT
EIS	EXISTING IRON STAKE	CB	CATCH BASIN



LS GRIFFIN LAND SURVEYING, INC.
 P.O. BOX 148
 FUQUAY-VARINA, NC 27526
 (919) - 567 - 1963

PLOT PLAN
 FOR
H & H HOMES
 OAKMONT
 LOT 89
 COUNTRYSIDE DRIVE
 NORTH CAROLINA
 HARNETT COUNTY BARBECUE TOWNSHIP

DRAWN BY KDF	DATE 4/18/22
CHECKED BY MPG	SCALE 1" = 40'