

NOT TO SCALE

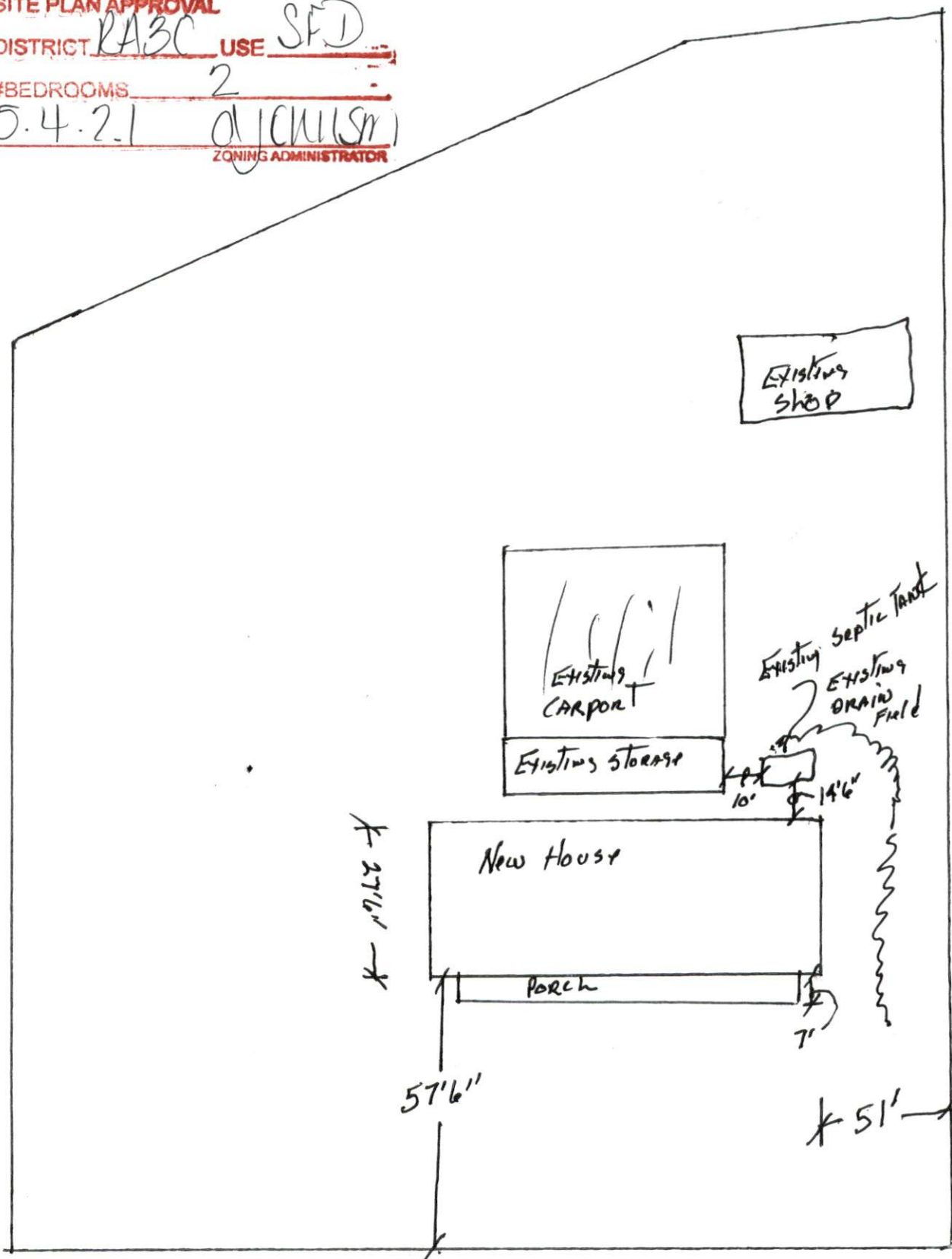
SITE PLAN APPROVAL

DISTRICT RA3C USE SFD

#BEDROOMS 2

5.4.2.1

ZONING ADMINISTRATOR



Property  
line  
31'  
SB

Road Byrd Rd

N/F  
PIN # 0567-13-9494.000  
ALBERT W. SCHOENING  
DB 769, PG 1  
PC #2, SLIDE 213

2021-158

EX. AXLE  
0.5' A/G  
(0.84' NW  
OF EIS)

S 50°59'04" E  
484.62'

87.03'

OLD REFERENCE

PIN #: 0567-13-8178.000  
JAMES E. NEIGHBORS, JR.  
DB 1188, PG 943  
TRACT II

OLD PROPERTY LINE

LOTS TO  
BE COMBINED

1R

116,027.76 SQ FT  
2664 COMBINED ACRES

OLD REFERENCE

PIN #: 0567-13-8033.000  
JAMES E. NEIGHBORS, JR.  
DB 1188, PG 943  
TRACT I

170.41'  
S 40°04'29" W 257.44' (TOTAL)

SR 2032 BYRD RD 60' PUBLIC R/W (PAVED)

EX. AXLE  
0.1' A/G  
DISTURBED  
(NAIL @ BASE)

321.28'  
N 55°14'00" W 358.01' (TOTAL)

EX. PK NAIL IN  
CENTERLINE

EPK IN  
CEDAR POST  
DISTURBED  
(0.55' SW OF LINE)

36.72'  
EIP  
0.3' A/G

93.43'  
N 54°56'54" W

(TIE LINE)  
S 06°31'02" E  
44.14'

(TIE LINE)  
S 39°20'34" W  
101.71'

N/F  
PIN # 0567-12-7896.000  
DONALD R. COLLINS  
DB 1798, PG 511

N/F  
PIN # 0567-12-6801.000  
JAMES E. NEIGHBORS, JR.

