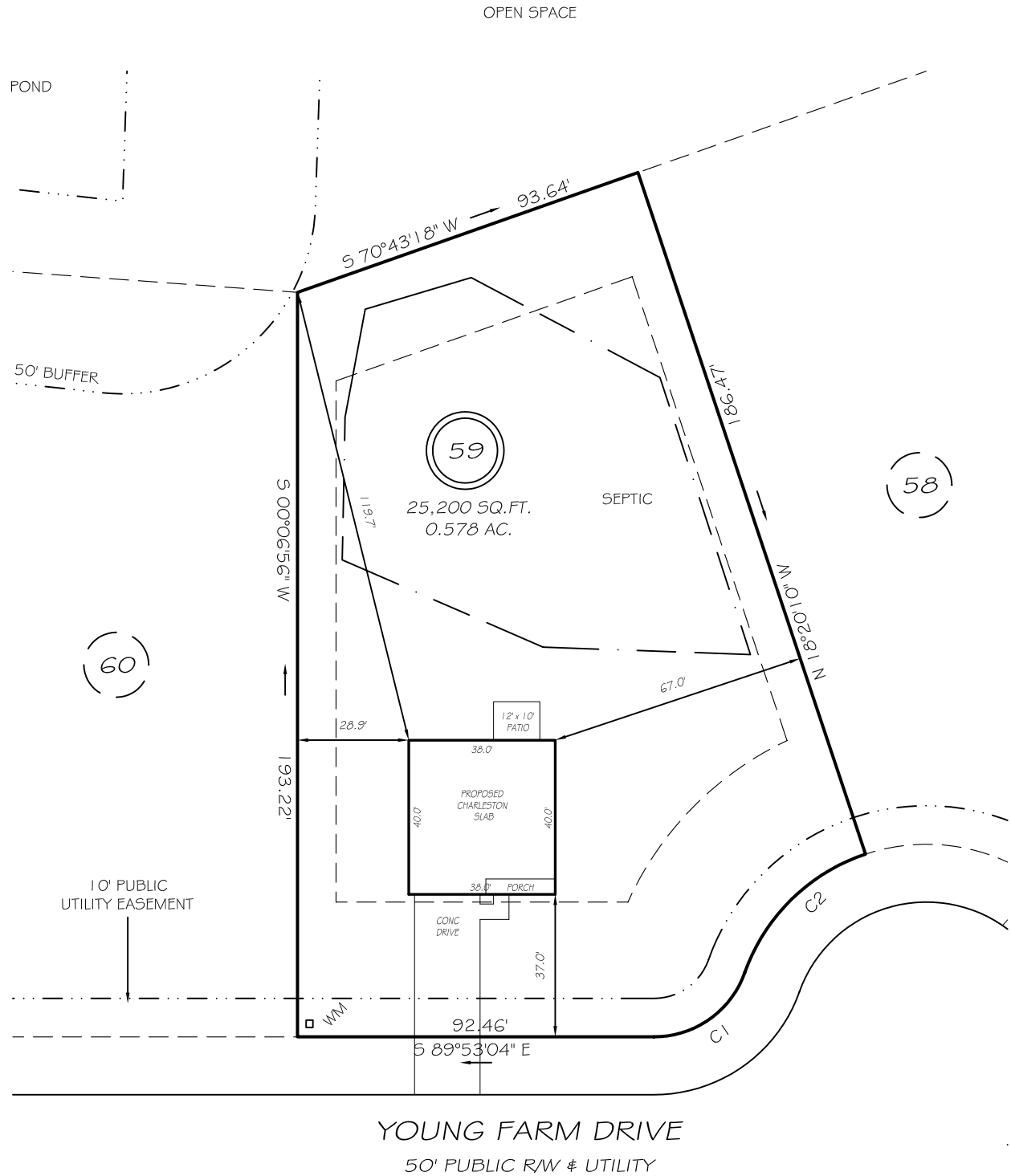


I, MICHAEL P. GRIFFIN, certify that under my direction and supervision this map was drawn from an actual field survey; that the error of closure of the survey as calculated by coordinates is 1: 10,000+; that the area shown hereon was calculated by coordinates.
 Witness my hand and seal this day of MONTH 2021.

BK 2021 FGS 139-141
 HARNETT CO. REGISTRY



IMPERVIOUS AREAS

HOUSE	1520 SQ. FT.
DRIVE & WALKS	669 SQ. FT.
PATIO	120 SQ. FT.
TOTAL	2309 SQ. FT.
ALLOWED	5500 SQ. FT.

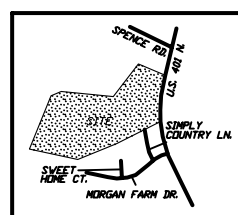
SETBACKS

FRONT	35'
REAR	25'
SIDE	10'
CORNER SIDE	20'

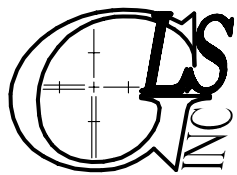
C1 R=25.00' L=30.77' S54°51'04"W 28.87'
 C2 R=50.00' L=45.45' N45°37'31"E 43.90'

LEGEND

EIP	EXISTING IRON PIPE	FES	FLARED END SECTION
IPS	IRON PIPE SET	WM	WATER METER
R/W	RIGHT OF WAY	CO	CLEAN OUT
N/F	NOW OR FORMERLY	FH	FIRE HYDRANT
EIS	EXISTING IRON STAKE	CB	CATCH BASIN



PRELIMINARY
 NOT FOR RECORDATION,
 SALES OR CONVEYANCE



GRIFFIN LAND SURVEYING, INC.
 P.O. BOX 148
 FUQUAY-VARINA, NC 27526
 (919) - 567 - 1963

PLOT PLAN
 FOR
D.R. HORTON

MORGAN NORTH
LOT 59

YOUNG FARM DRIVE
 NORTH CAROLINA
 HARNETT CO. HECTOR'S CREEK TWSHP

DRAWN BY NMF	DATE 4/19/21
CHECKED BY MPG	SCALE 1" = 40'

