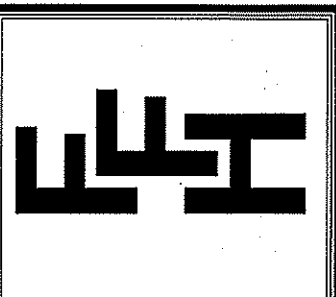


NOTICE TO CONTRACTOR
 APPROVED
 05/03/2021
 Harnett COUNTY
 NORTH CAROLINA

THIS PLAN IS DESIGNED TO MEET THE REQUIREMENTS OF THE NORTH CAROLINA RESIDENTIAL CODE 2018 EDITION

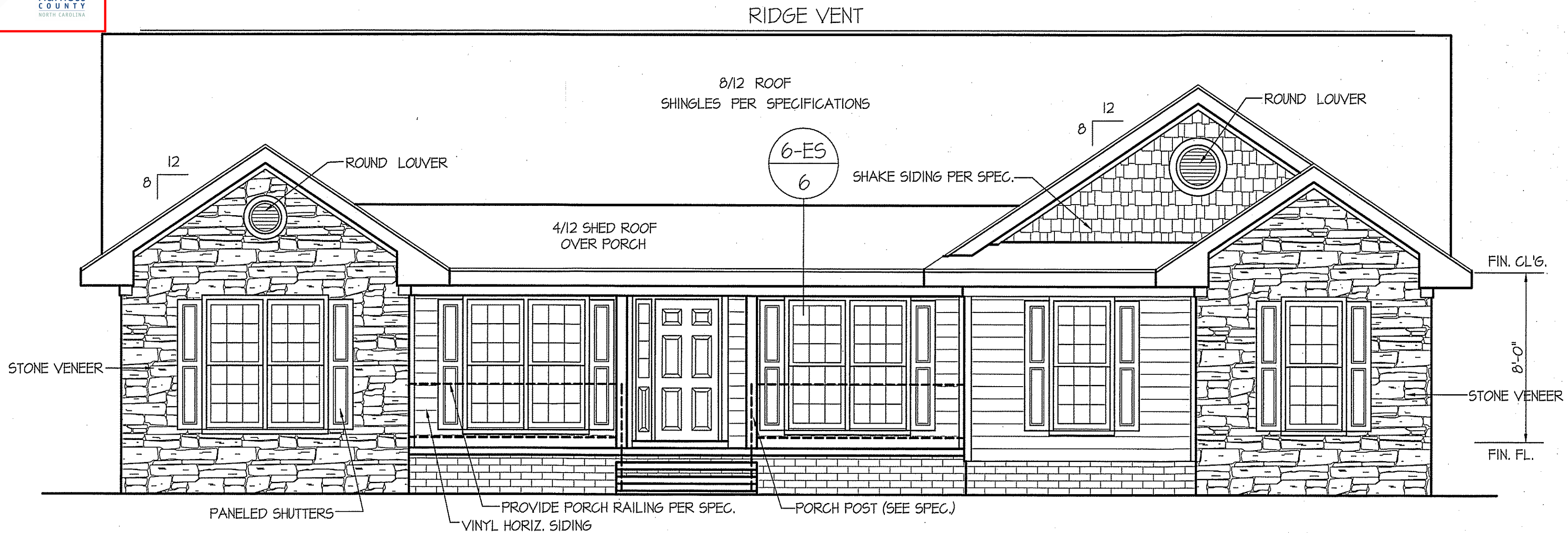
DATE:
 JAN. 30, 2021

FREEDOM FAMILY HOMES
 P.O. BOX 608
 DUNN, N.C. - 28335
 O: (910) 892-1231 FAX: (910) 892-5680
 © 2021, FREEDOM FAMILY HOMES



EXCLUSIVE PLAN FOR
 FREEDOM FAMILY HOMES
 WILMINGTON~PEARSALL

SHEET NO.
 1



FRONT ELEVATION
 SCALE: 1/4" = 1'-0"

WIND ZONES (PER TABLE R301.2(4))

COUNTY	MPH
HARNETT	120
JOHNSTON	120
SAMPSON	130
WAKE	115

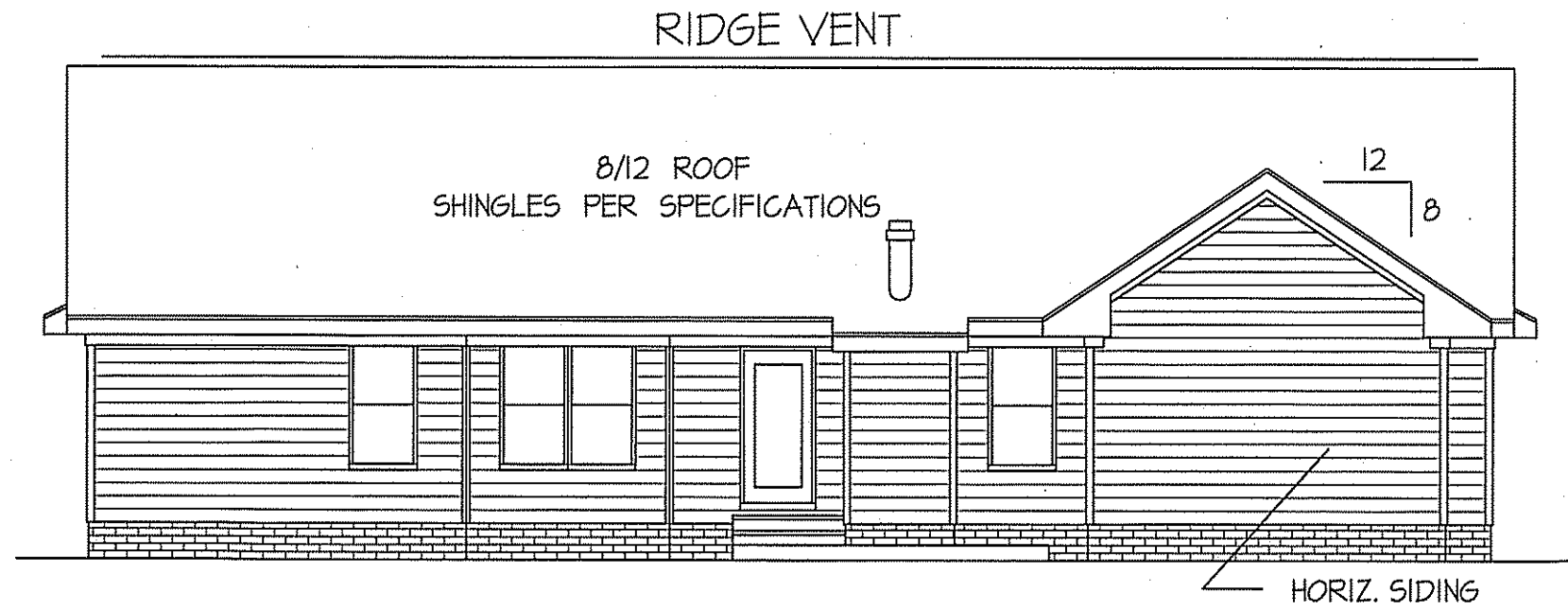
ALL EXTERIOR WALLS TO BE SHEATHED WITH CS-WSP (1/16" OSB) IN ACCORDANCE WITH SECTION R602.10.3 UNLESS OTHERWISE NOTED.

INSULATION and FENESTRATION REQUIREMENTS

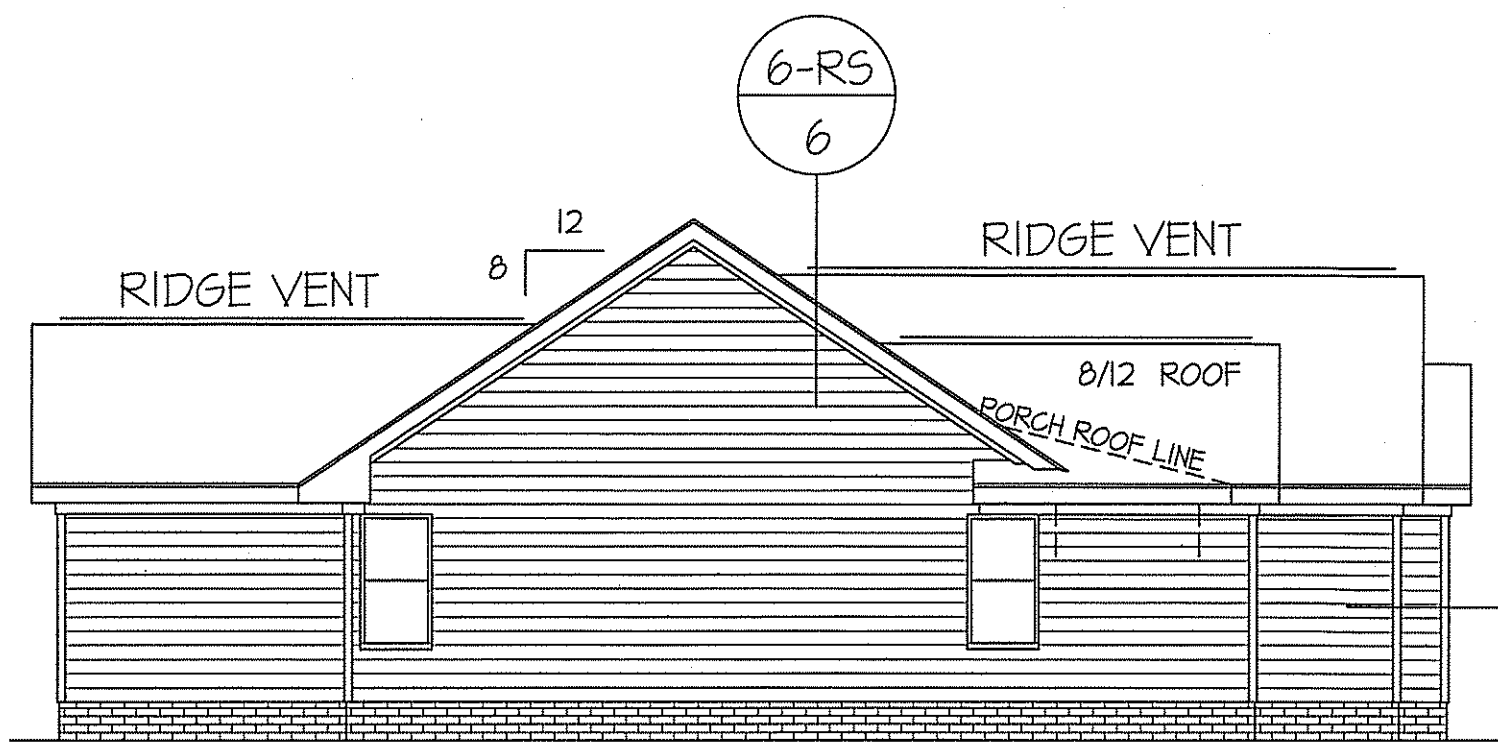
CLIMATE ZONE	ZONE-3	ZONE-4
FENESTRATION U-FACTOR	0.35	0.35
GLAZED FENESTRATION SHGC	0.30	0.30
MINIMUM CEILING R-VALUE	R-38	R-38
MINIMUM WALL R-VALUE	R-15, I3+2.5	R-15, I3+2.5
MINIMUM FLOOR R-VALUE	R-19	R-19
MIN. CRAWL SPACE WALL R-VALUE	5/13	10/15
MIN. SLAB R-VALUE	0	R-10

PROVIDE STEPS AS REQUIRED
 GRADE MAY VARY - BUILDER TO VERIFY

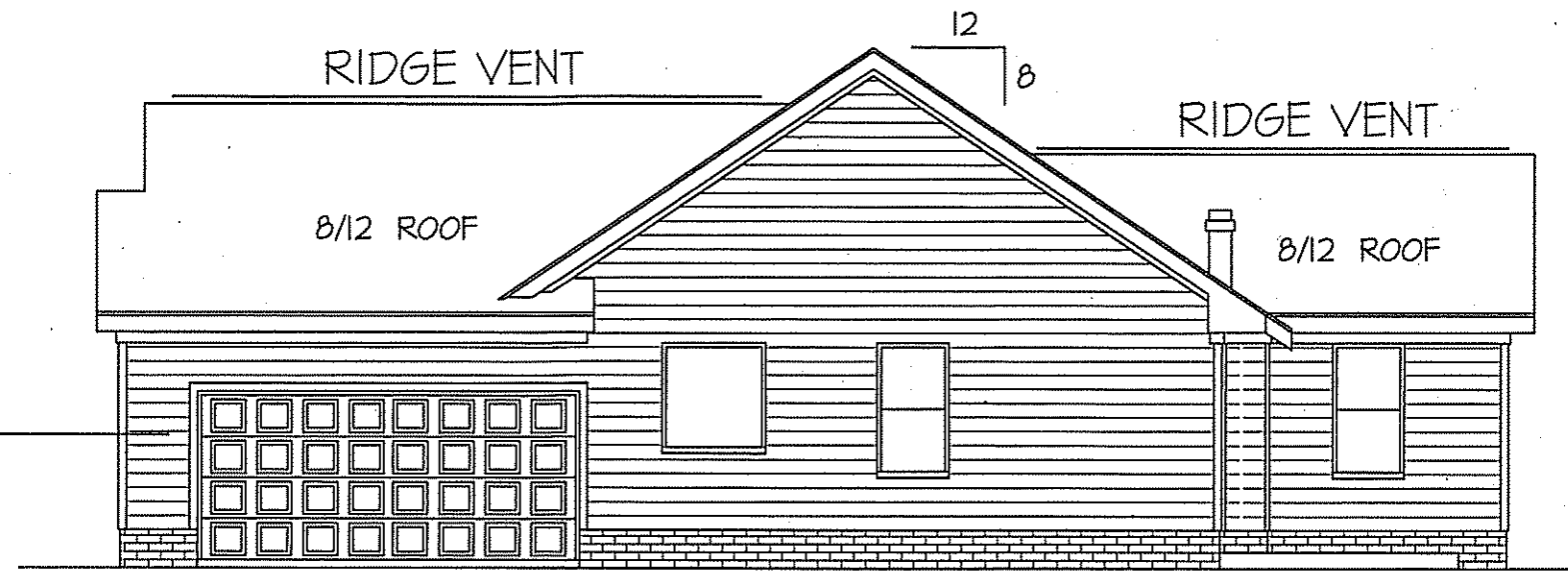
ROOF VENTILATION REQ'MTS.
 2634 ATTIC SQ. FT. / 300 = 8.78
 PROVIDED ON PLAN
 121 L.F. - RIDGE VENT = 22.68
 159 L.F. SOFFIT VENT = 9.94
 TOTAL = 32.62 S.F. FREE NET AREA



REAR ELEVATION
 SCALE: 1/8" = 1'-0"



LEFT ELEVATION
 SCALE: 1/8" = 1'-0"



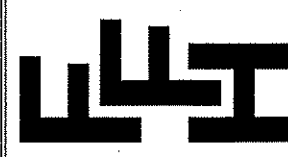
RIGHT ELEVATION
 SCALE: 1/8" = 1'-0"

COMPUTER FILED IN FREEDOM FAMILY HOMES FOLDER - WILMINGTON - JAN-2021

WIND ZONES (PER TABLE R301.2(4))	
COUNTY	MPH
HARNETT	120
JOHNSTON	120
SAMPSON	130
WAKE	115

DATE:
JAN. 30, 2021

FREEDOM FAMILY HOMES
P.O. BOX 608
DUNN, N.C. - 28335
O: (910) 892-1231 FAX: (910) 892-5680
© 2021, FREEDOM FAMILY HOMES



EXCLUSIVE PLAN FOR
FREEDOM FAMILY HOMES
WILMINGTON~PEARSALL

PLAN:
2
SHEET NO.

COMPUTER FILED IN FREEDOM FAMILY HOMES FOLDER -WILMINGTON - JAN-2021

ALL INTERIOR AND EXTERIOR
LOAD BEARING HEADERS
WILL BE 2x10 #2 SPF
UNLESS OTHERWISE NOTED.

HEADER SCHEDULE		
SYMBOL #	SIZE	JACKS
H-1	(2) 2x10	1
H-2	(2) 2x10	2
H-3	(2) 2x8	2
H-4	(2) 2x12	2
H-5	(2) 1.75 x 9.25 LVL	3

SECTION R407-COLUMNS
R407.3 STRUCTURAL REQUIREMENTS.
THE COLUMNS SHALL BE RESTRAINED TO PREVENT LATERAL
DISPLACEMENT AT THE TOP AND BOTTOM END. WOOD COLUMNS
SHALL BE NOT LESS IN NOMINAL SIZE THAN 4 INCHES BY 4 INCHES
(102 mm BY 102 mm). STEEL COLUMNS SHALL BE NOT LESS THAN
3-INCH-DIAMETER (76 mm) SCHEDULE 40 PIPE MANUFACTURED IN
ACCORDANCE WITH ASTM A53 GRADE B OR APPROVED EQUIVALENT.

2-2x10 BEAM (BOXED TO COLUMN WIDTH)
GIRDER AND HEADER SIZES AND JACK STUD
REQUIREMENTS ON EXTERIOR AND INTERIOR LOAD
BEARING WALLS ARE TO COINCIDE WITH TABLE
EXT.~R602.7 (1) AND INT.~R602.7 (2).

8' CEILINGS UNLESS OTHERWISE NOTED
**DIMENSIONS
FLOOR PLAN**
SCALE: 1/4"=1'-0"

TOTAL FLOOR = 2012 SQUARE FEET (HEATED - FRAME)
159 SQUARE FEET (COVERED FRONT PORCH)
140 SQUARE FEET (CONCRETE PATIO)
461 SQUARE FEET (DOUBLE GARAGE)

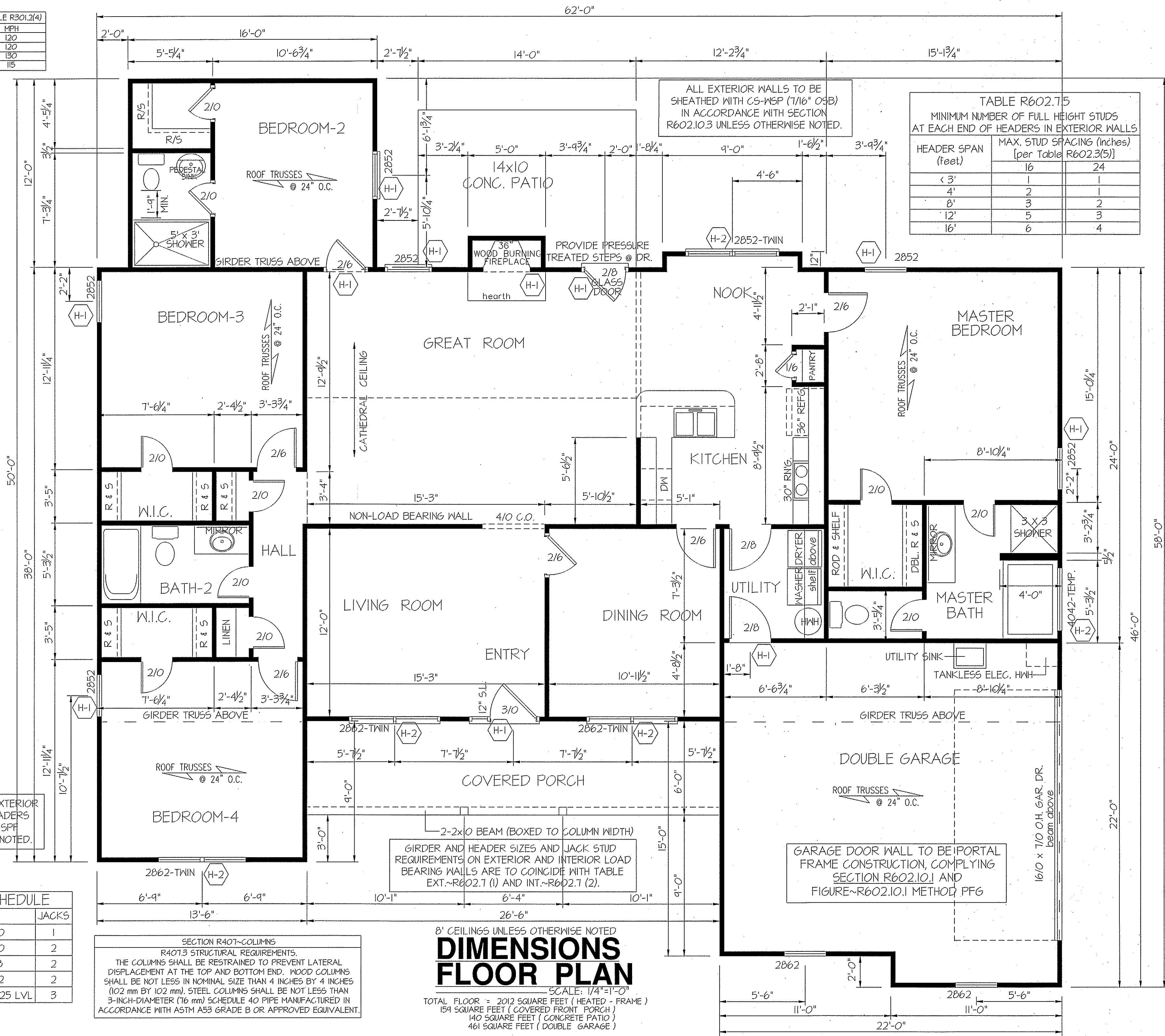
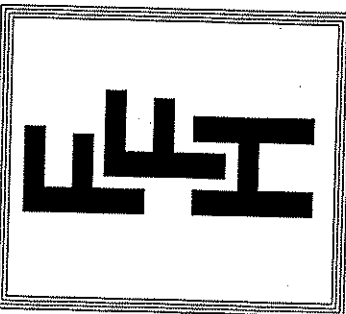


TABLE R602.7.5
MINIMUM NUMBER OF FULL HEIGHT STUDS
AT EACH END OF HEADERS IN EXTERIOR WALLS

HEADER SPAN (feet)	MAX. STUD SPACING (inches) [per Table R602.3(5)]	
	16	24
< 3'	1	1
4'	2	1
8'	3	2
12'	5	3
16'	6	4

DATE:
JAN. 30, 2021

FREEDOM FAMILY HOMES
P.O. BOX 608
DUNN, N.C. - 28335
O: (910) 892-1231 FAX: (910) 892-5680
© 2021, FREEDOM FAMILY HOMES



EXCLUSIVE PLAN FOR
FREEDOM FAMILY HOMES
WILMINGTON~PEARSALL

SHEET NO.
3

FOUNDATION DRAINAGE
A DRAINAGE SYSTEM IS NOT REQUIRED WHEN THE FOUNDATION IS INSTALLED ON WELL-DRAINED GROUND OR SAND-GRAVEL MIXTURE SOILS ACCORDING TO THE UNIFIED SOIL CLASSIFICATION SYSTEM, GROUP 1 SOILS, AS DETAILED IN TABLE R405.1

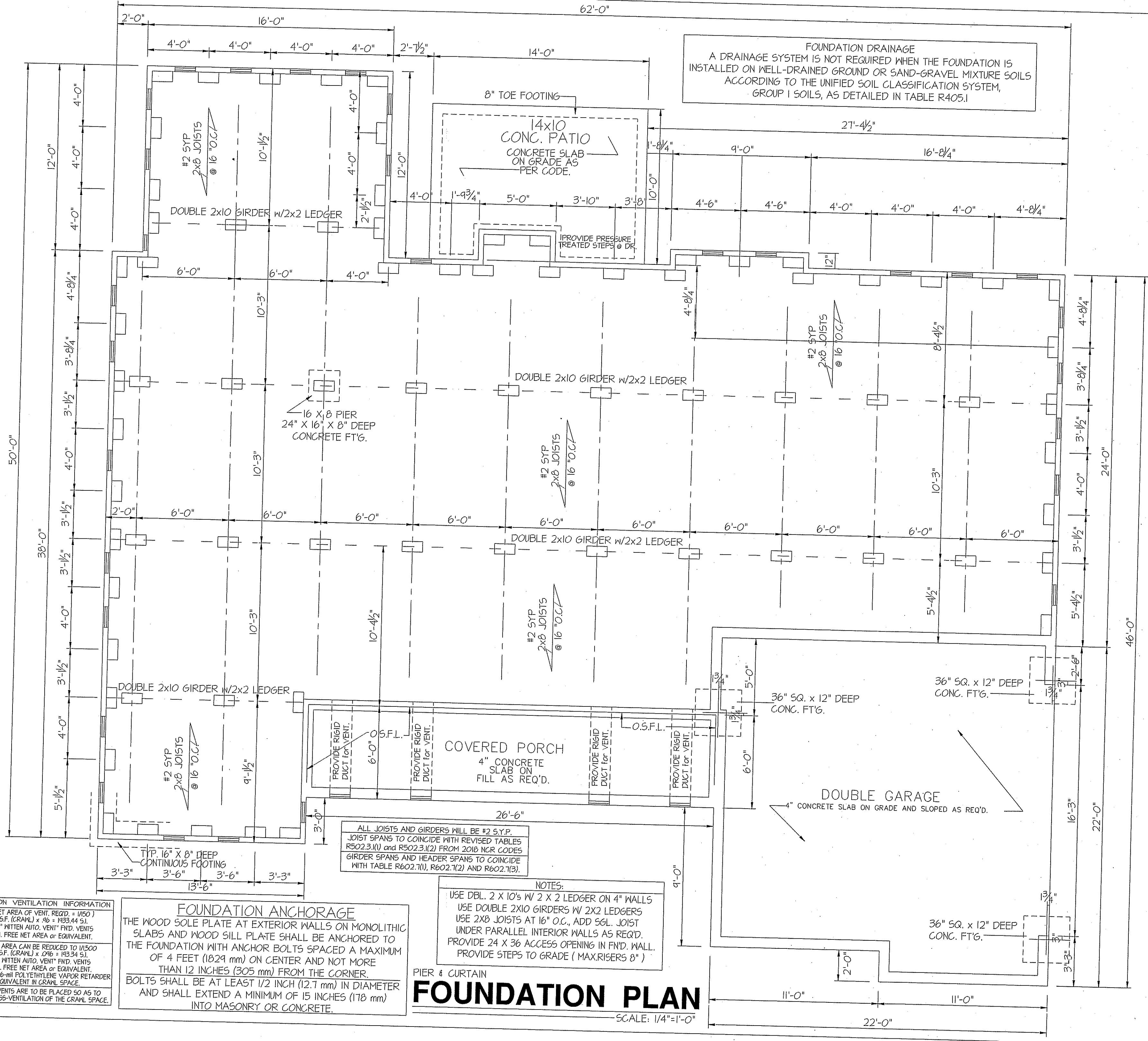
ALL JOISTS AND GIRDERS WILL BE #2 SYP.
JOIST SPANS TO COINCIDE WITH REVISED TABLES R502.3.1(1) AND R502.3.1(2) FROM 2018 NCR CODES
GIRDER SPANS AND HEADER SPANS TO COINCIDE WITH TABLE R602.7(1), R602.7(2) AND R602.7(3).

NOTES:
USE DBL. 2 X 10'S W/ 2 X 2 LEDGER ON 4" WALLS
USE DOUBLE 2X10 GIRDERS W/ 2X2 LEDGERS
USE 2X8 JOISTS AT 16" O.C., ADD SGL. JOIST UNDER PARALLEL INTERIOR WALLS AS REQ'D.
PROVIDE 24 X 36 ACCESS OPENING IN FND. WALL.
PROVIDE STEPS TO GRADE (MAX. RISERS 8")

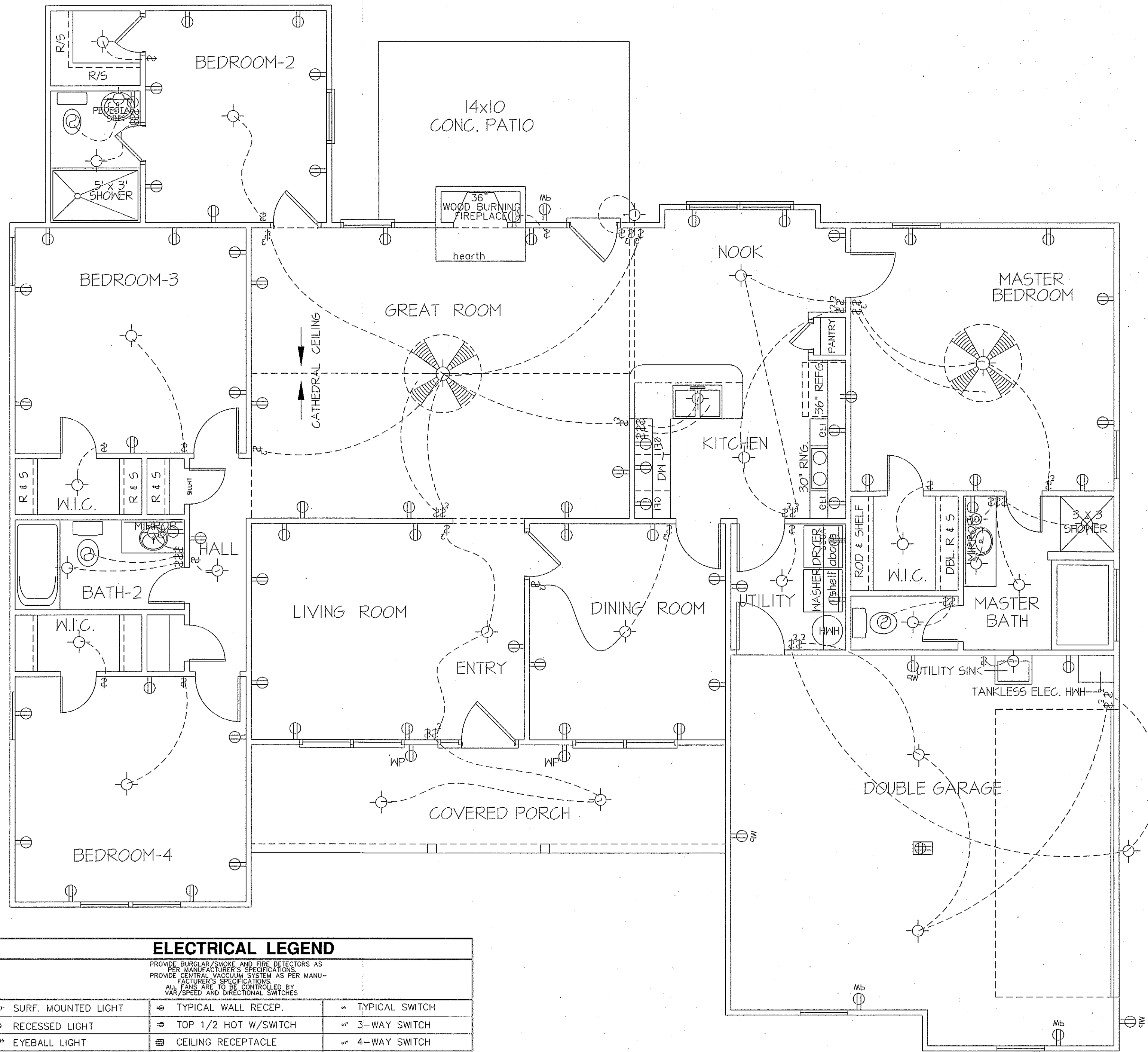
FOUNDATION ANCHORAGE
THE WOOD SOLE PLATE AT EXTERIOR WALLS ON MONOLITHIC SLABS AND WOOD SILL PLATE SHALL BE ANCHORED TO THE FOUNDATION WITH ANCHOR BOLTS SPACED A MAXIMUM OF 4 FEET (1829 mm) ON CENTER AND NOT MORE THAN 12 INCHES (305 mm) FROM THE CORNER.
BOLTS SHALL BE AT LEAST 1/2 INCH (12.7 mm) IN DIAMETER AND SHALL EXTEND A MINIMUM OF 15 INCHES (178 mm) INTO MASONRY OR CONCRETE.

FOUNDATION VENTILATION INFORMATION
(MIN. NET AREA OF VENT. REQ'D. = 1/60)
2014 SF. (CRANL) x 96" = 193,44 S.I.
USE 30" WITTEN AUTO. VENT. FND. VENTS @ 65 S.I. FREE NET AREA OR EQUIVALENT.
(MIN. NET AREA CAN BE REDUCED TO 1/1500)
2014 SF. (CRANL) x 0.96" = 193.34 S.I.
USE 3" WITTEN AUTO. VENT. FND. VENTS @ 65 S.I. FREE NET AREA OR EQUIVALENT.
W/ APPROVED 6-mil POLYETHYLENE VAPOR RETARDER OR EQUIVALENT IN CRANL SPACE.
REQUIRED VENTS ARE TO BE PLACED SO AS TO PROVIDE CROSS-VENTILATION OF THE CRANL SPACE.

FOUNDATION PLAN
SCALE: 1/4"=1'-0"



COMPUTER FILED IN FREEDOM FAMILY HOMES FOLDER - WILMINGTON - JAN-2021



ELECTRICAL LEGEND

PROVIDE BURGLAR/SMOKE AND FIRE DETECTORS AS PER MANUFACTURER'S SPECIFICATIONS
 PROVIDE CENTRAL VACUUM SYSTEM AS PER MANUFACTURER'S SPECIFICATIONS
 ALL FANS ARE TO BE CONTROLLED BY VAR/SPEED AND DIRECTIONAL SWITCHES

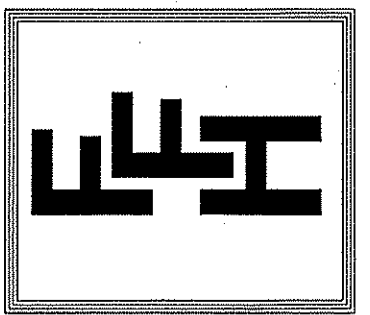
⊕ SURF. MOUNTED LIGHT	⊕ TYPICAL WALL RECEP.	⊕ TYPICAL SWITCH
○ RECESSED LIGHT	⊕ TOP 1/2 HOT W/SWITCH	⊕ 3-WAY SWITCH
⊕ EYEBALL LIGHT	⊕ CEILING RECEPTACLE	⊕ 4-WAY SWITCH
⊕ FAN/LIGHT COMB.	⊕ FLOOR RECEPTACLE	⊕ DIMMER SWITCH
— FLUORESCENT TUBE	⊕ WATERPROOF RECEP.	⊕ ELEC. PANEL BOX
□ FLUOR. LIGHT FIXTURE	⊕ GROUND FAULT	⊕ T.V. CABLE RECEP.
⊕ EXHAUST FAN	⊕ DISPOSAL UNIT	⊕ TELEPHONE JACK
⊕ CL'G. FAN	⊕ 220 VOLT RECEPTACLE	⊕ COMPUTER JACK
⊕ FLOOD LIGHT		

TOTAL FLOOR = 2014 SQUARE FEET (HEATED - FRAME)
 159 SQUARE FEET (COVERED FRONT PORCH)
 140 SQUARE FEET (CONCRETE PATIO)
 461 SQUARE FEET (DOUBLE GARAGE)

8' CEILINGS UNLESS OTHERWISE NOTED
ELECTRICAL FLOOR PLAN
 SCALE: 1/4"=1'-0"

DATE:
 JAN. 30, 2021

FREEDOM FAMILY HOMES
 P.O. BOX 608
 DUNN, N.C. - 28335
 O: (910) 892-1231 FAX: (910) 892-5680
 © 2021, FREEDOM FAMILY HOMES

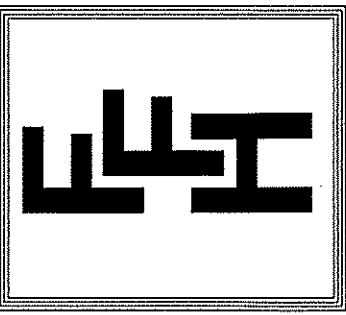


EXCLUSIVE PLAN FOR
FREEDOM FAMILY HOMES
WILMINGTON~PEARSALL

PLAN:
 SHEET NO.
4

DATE:
JAN. 30, 2021

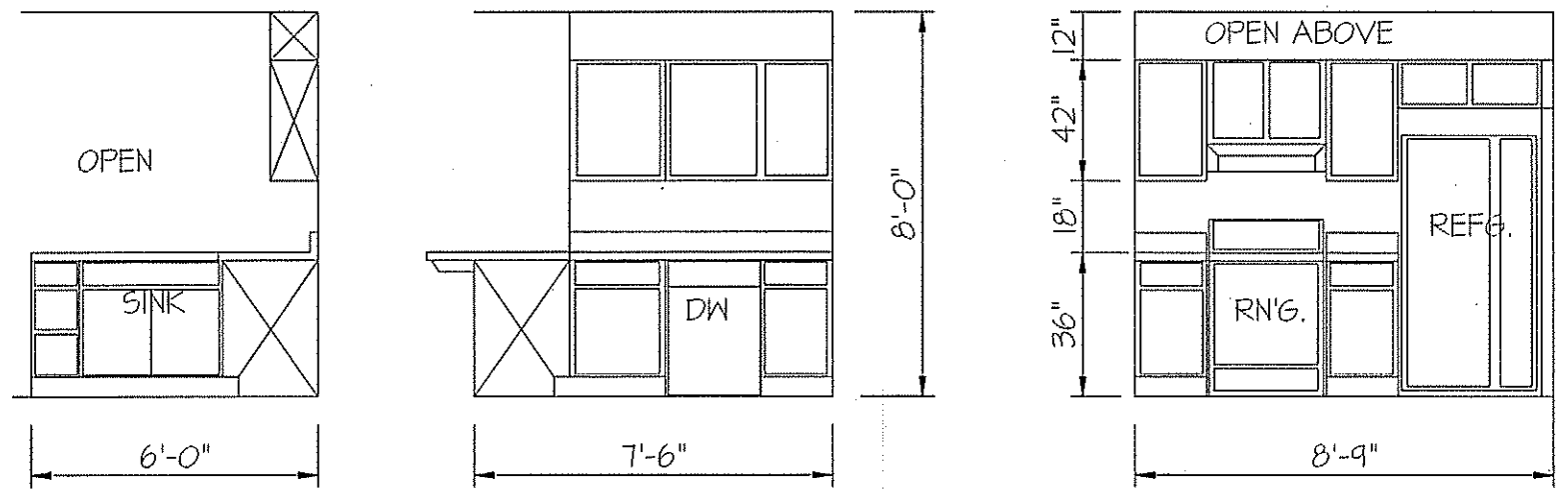
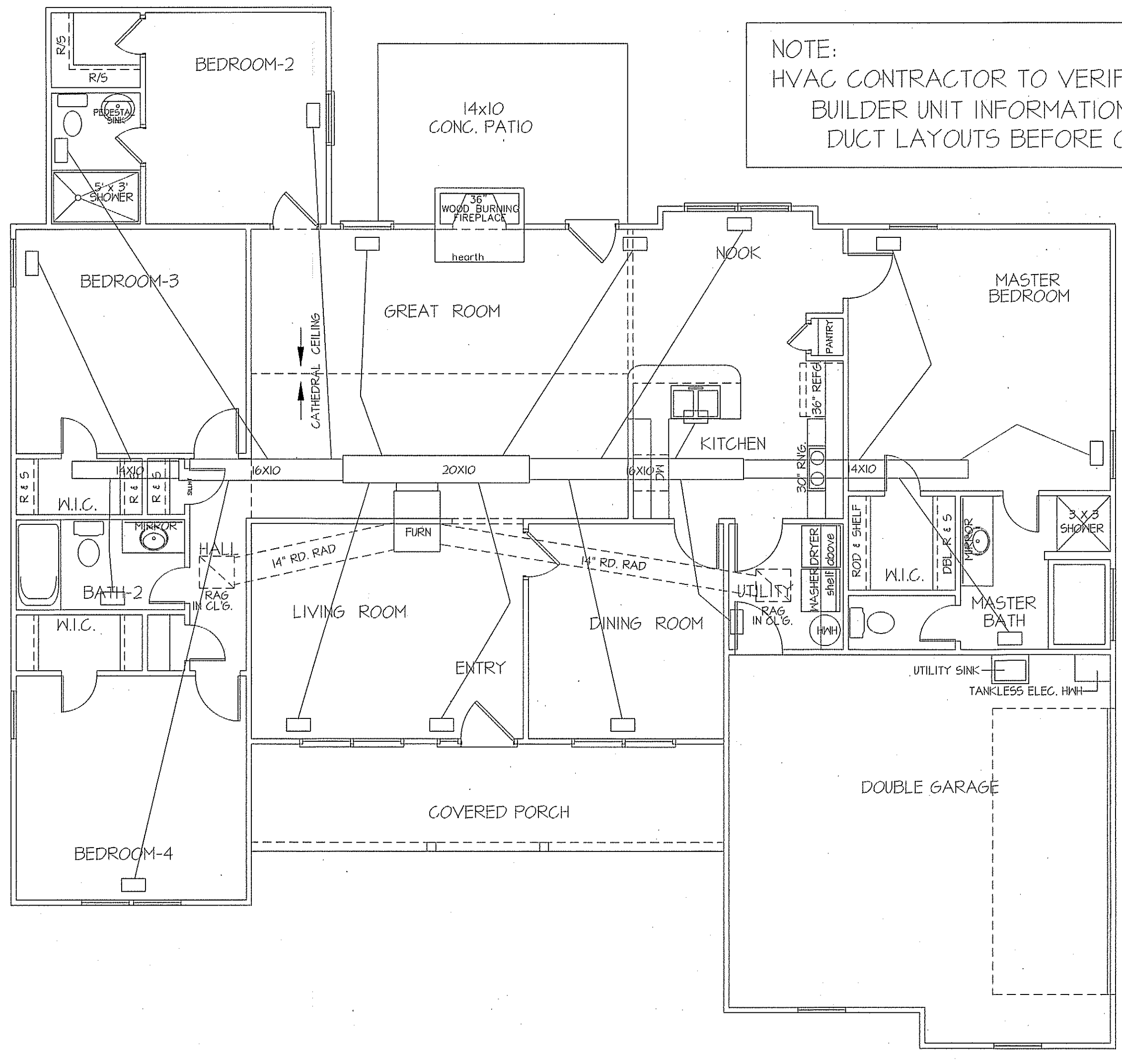
FREEDOM FAMILY HOMES
P.O. BOX 608
DUNN, N.C. - 28335
O: (910) 892-1231 FAX: (910) 892-5680
© 2021, FREEDOM FAMILY HOMES



EXCLUSIVE PLAN FOR
FREEDOM FAMILY HOMES
WILMINGTON~PEARSALL

SHEET NO.
5

NOTE:
HVAC CONTRACTOR TO VERIFY and PROVIDE OWNERS and BUILDER UNIT INFORMATION, BTUH REQUIREMENTS, and DUCT LAYOUTS BEFORE CONSTRUCTION BEGINS.

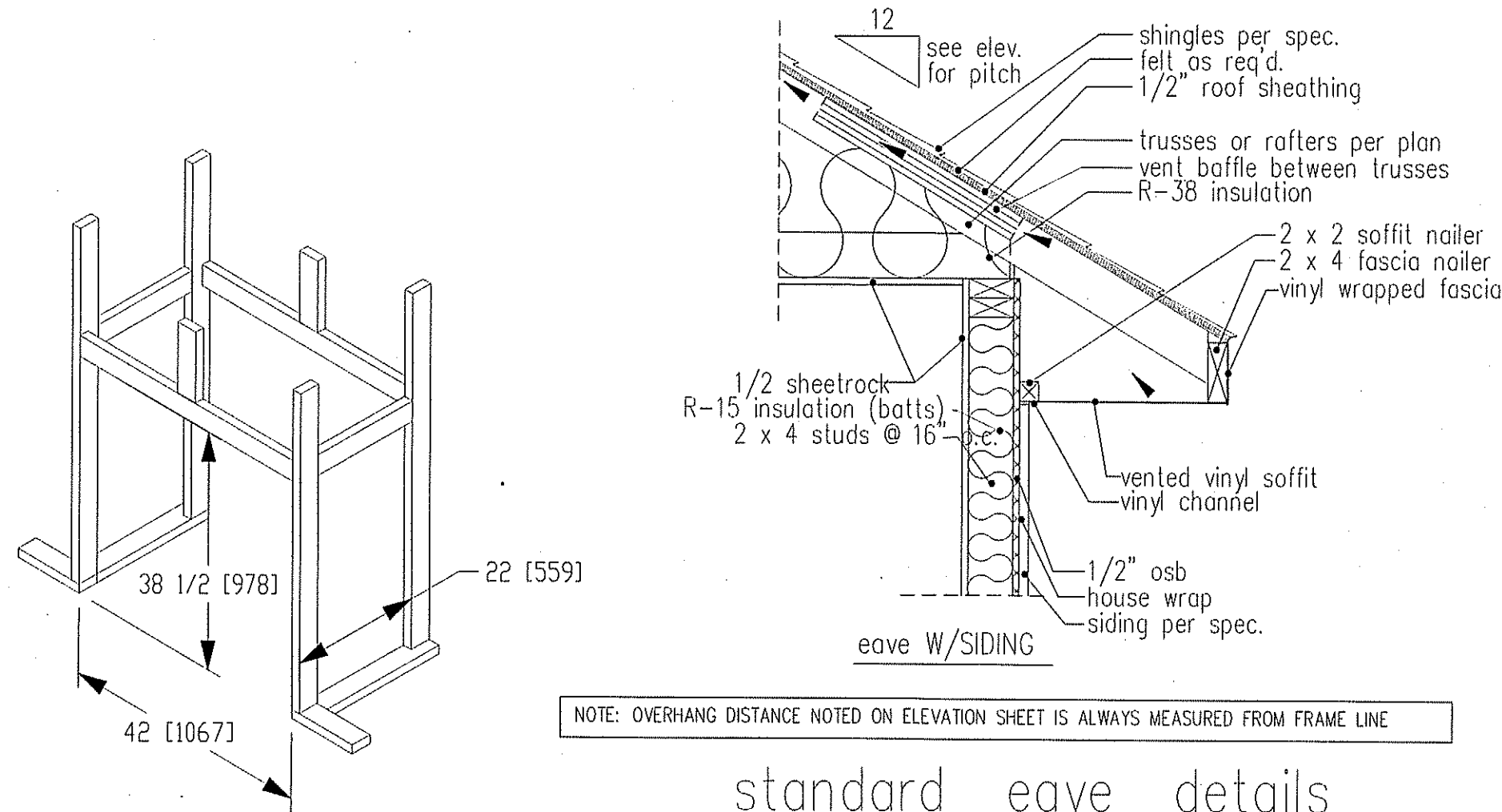


KITCHEN CABINET ELEVATIONS
SCALE: 1/4"=1'-0"

8' CEILINGS
HVAC FLOOR PLAN
SCALE: 3/16"=1'-0"

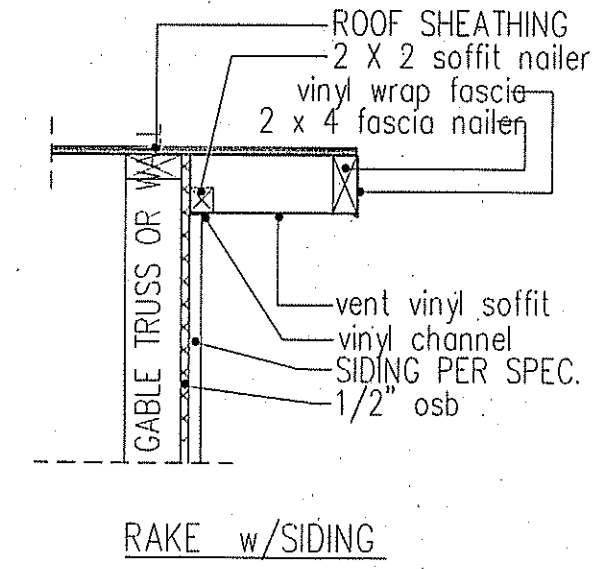
TOTAL FLOOR = 2014 SQUARE FEET (HEATED - FRAME)

SYSTEM TO BE IN ATTIC AREA
TOTAL HEAT GAIN = 32,425 BTUH
TOTAL HEAT LOSS = 51,256 BTUH



NOTE: OVERHANG DISTANCE NOTED ON ELEVATION SHEET IS ALWAYS MEASURED FROM FRAME LINE

standard eave details



NOTE: OVERHANG DISTANCE NOTED ON ELEVATION SHEET IS ALWAYS MEASURED FROM FRAME LINE

TABLE R602.7.5
MINIMUM NUMBER OF FULL HEIGHT STUDS AT EACH END OF HEADERS IN EXTERIOR WALLS

HEADER SPAN (feet)	MAX. STUD SPACING (inches) [per Table R602.3(5)]	
	16	24
< 3'	1	1
4'	2	1
8'	3	2
12'	5	3
16'	6	4

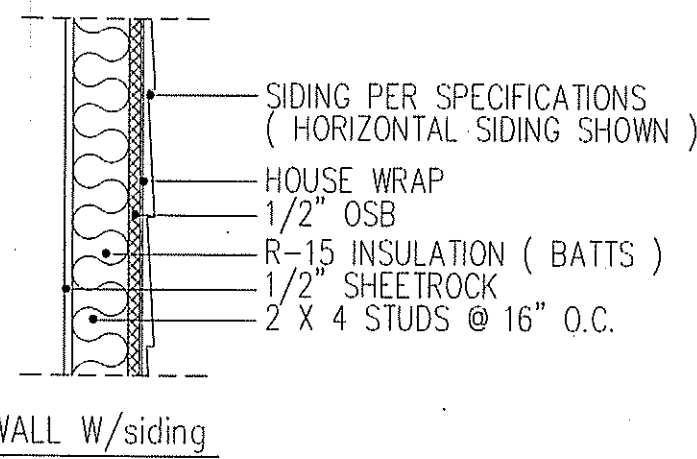
GIRDER AND HEADER SIZES AND JACK STUD REQUIREMENTS ON EXTERIOR AND INTERIOR LOAD BEARING WALLS ARE TO COINCIDE WITH TABLE EXT.~R602.7 (1) AND INT.~R602.7 (2).

DIMENSIONS IN [] ARE MM

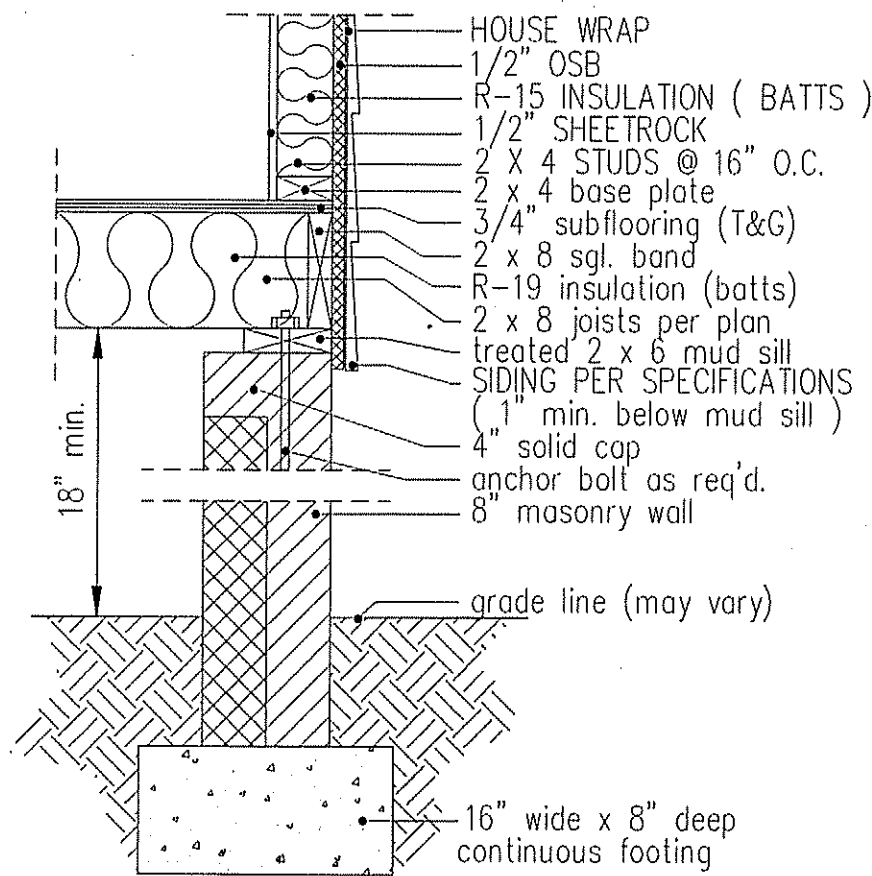
SPECIFICATIONS

Model 6000-TR	Height		Front Width		Back Width		Depth		Glass Size	BTU Input
	Actual Framing	Actual Framing	Actual Framing	Actual Framing	Actual Framing	Actual Framing				
Inches	38	38-1/2	41	42	28-1/2	42	21-1/2	22		

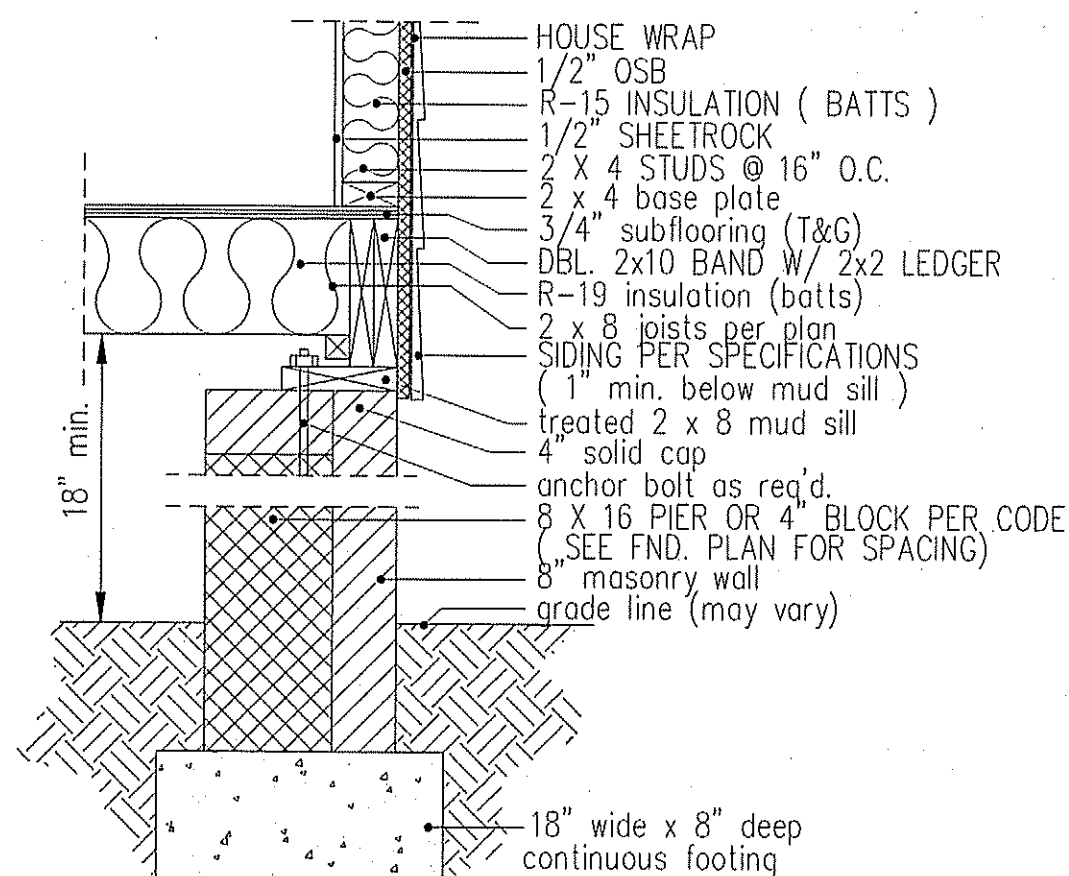
Reference dimensions only. We recommend measuring individual units at installation.



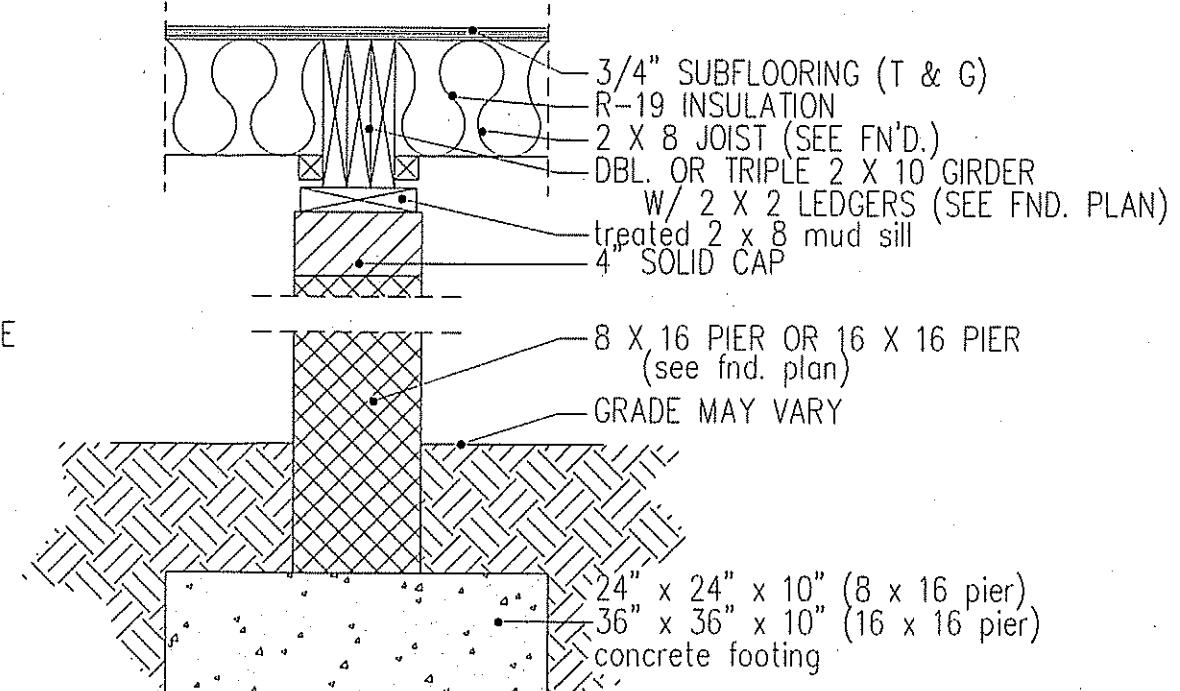
WALL W/siding
intermediate wall details



8" BOX SILL
FOUNDATION WALL



PIER and CURTAIN
FOUNDATION WALL



PIER and GIRDER
DETAIL

DATE:
JAN. 30, 2021

FREEDOM FAMILY HOMES
P.O. BOX 608
DUNN, N.C. - 28335
O: (910) 892-1231 FAX: (910) 892-5680
©2021, FREEDOM FAMILY HOMES



EXCLUSIVE PLAN FOR
FREEDOM FAMILY HOMES
WILMINGTON~PEARSALL

PLAN:

SHEET NO.

6