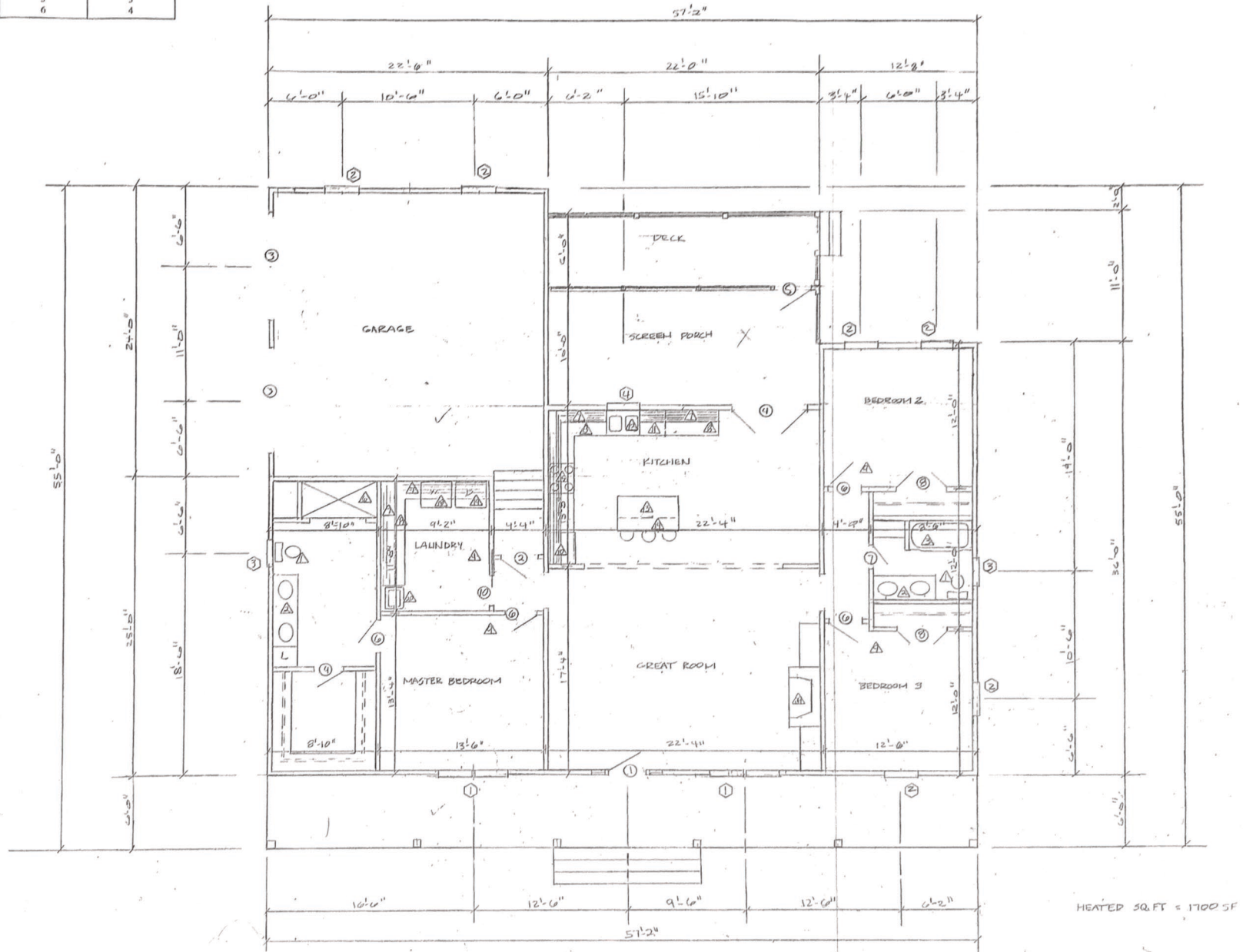


TABLE R602.7.5
MINIMUM NUMBER OF FULL HEIGHT STUDS
AT EACH END OF HEADERS IN EXTERIOR WALLS

HEADER SPAN (feet)	MAXIMUM STUD SPACING (inches) (Per Table R602.3(5))	
	16	24
5' 3"	1	1
4'	2	1
8'	3	2
12'	5	3
16'	6	4



- LEGEND**
- FIRST FLOOR & SECOND FLOOR
 - CONCENTRATED LOAD LOCATOR
 - WOOD STUD WALL
 - BRICK VENEER WALL
 - CEILING KEY: 3 x 15 @ 16" OC #12 UNLESS OTHERWISE NOTED
 - IRAM AS NOTED
 - NUMBER OF STUDS REQ'D FOR IRAM SUPPORT

1
5-3
FLOOR PLAN
2018.04.15



MASSINGILL ASSOCIATES, P.A.
CONSULTING ENGINEERING
 536 E. MAIN ST. P.O. BOX 648
 BENSON, N.C. 27504 - 0688
 PHONE: 919-554-5077 FAX: 919-554-7208

RESIDENCE FOR
LARYCE BARNES

FLOOR PLAN

THESE DOCUMENTS ARE INSTRUMENTS OF SERVICE AND AS SUCH REMAIN THE PROPERTY OF THE ENGINEER. PROFESSIONALS CAN USE THEM ONLY WITH THE ENGINEER'S WRITTEN APPROVAL.

SCALE AS NOTED
 DATE:
 SHEET: