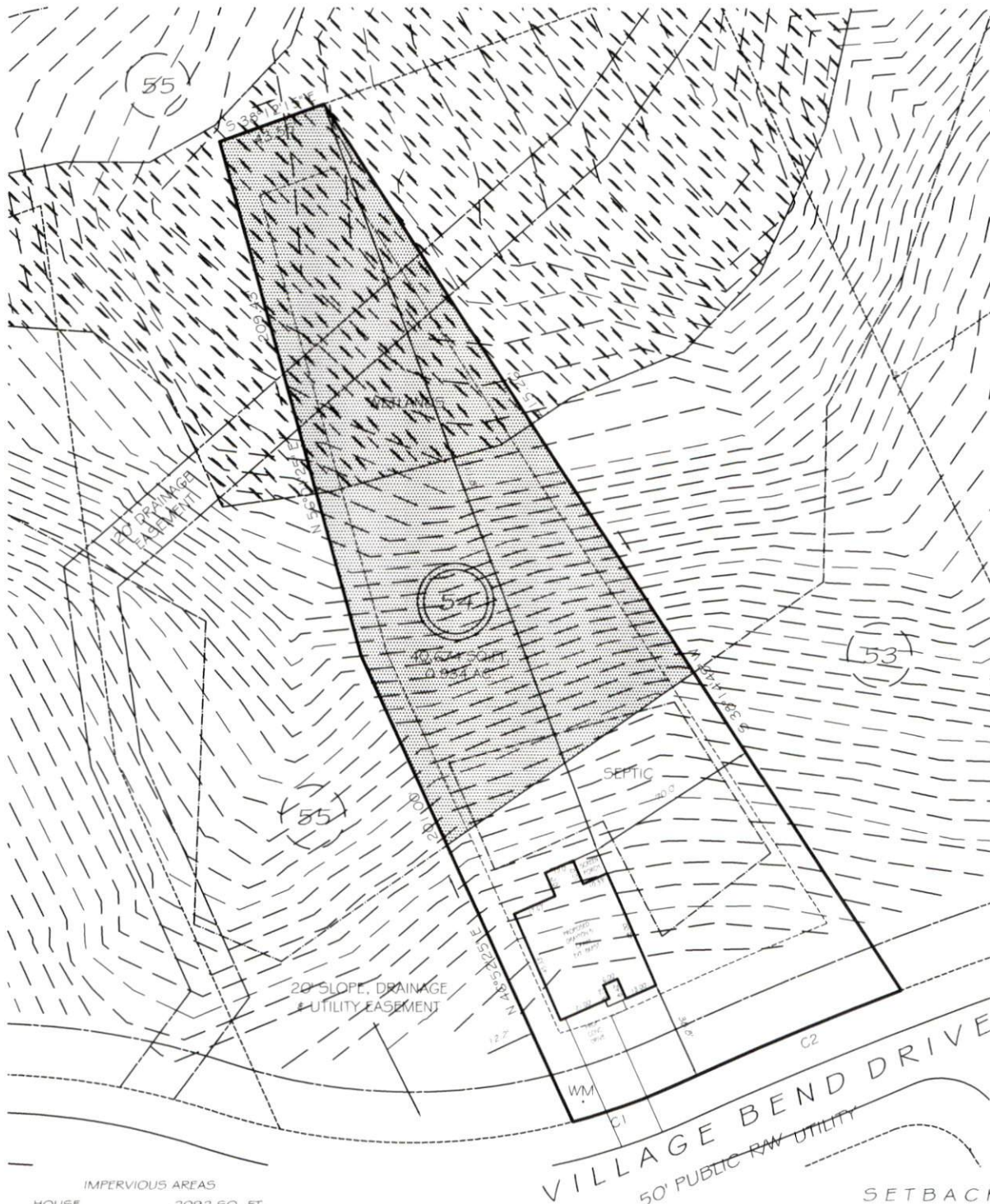


I, MICHAEL P. GRIFFIN, certify that under my direction and supervision this map was drawn from an actual field survey; that the error of closure of the survey as calculated by coordinates is 1: 10,000+; that the area shown hereon was calculated by coordinates.

Witness my hand and seal this day of MONTH 2020.

BK 2019 FGS 421-424  
HARNETT CO. REGISTRY



IMPERVIOUS AREAS	
HOUSE	2092 SQ. FT.
DRIVE & WALKS	722 SQ. FT.
PATIO	0 SQ. FT.
<b>TOTAL</b>	<b>2814 SQ. FT.</b>
ALLOWED	3600 SQ. FT.

NEW IMPERVIOUS RECORDING  
PB 2020 PG 306

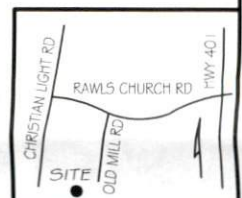
SETBACKS	
FRONT	35'
REAR	25'
SIDE	10'
CORNER SIDE	20'

C1 R=250.00' L=43.09' S38°16'10"E 43.03'  
C2 R=1525.00' L=96.17' N41°24'00"W 96.15'

UNSUITABLE SOILS

**LEGEND**

EIP	EXISTING IRON PIPE	FES	FLARED END SECTION
IPS	IRON PIPE SET	WM	WATER METER
RAW	RIGHT OF WAY	CO	CLEAN OUT
N/F	NOW OR FORMERLY	FH	FIRE HYDRANT
EIS	EXISTING IRON STAKE	YI	YARD INLET



**PRELIMINARY**  
NOT FOR RECORDATION,  
SALES OR CONVEYANCE