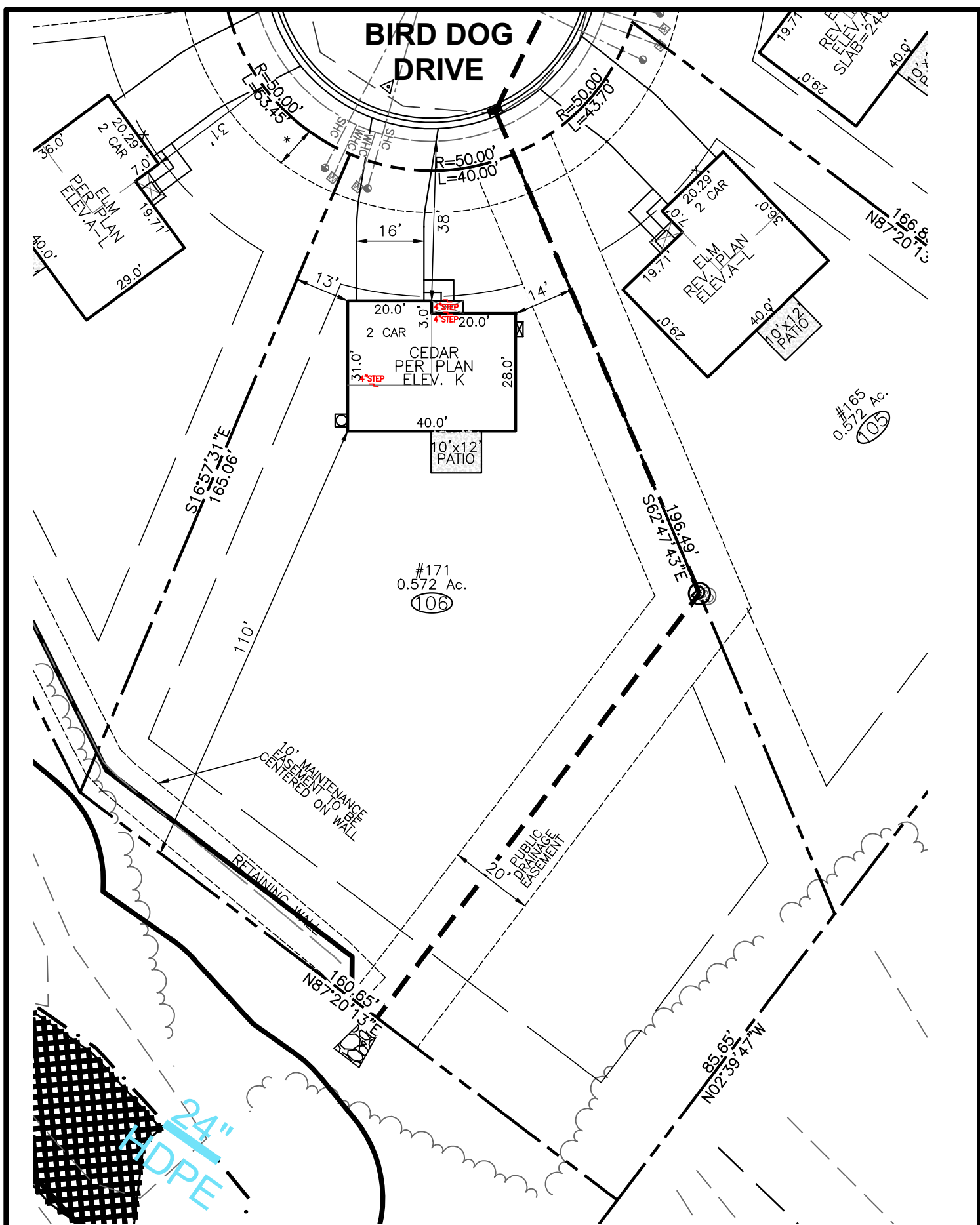


BIRD DOG DRIVE



#171
0.572 Ac.
(106)

#165
0.572 Ac.
(105)

SETBACK	MINIMUM
FRONT	30' MIN.
SIDE	10' MIN. (20' CORNER)
REAR	20' MIN.
IMPERVIOUS	1,862 S.F. (8%)

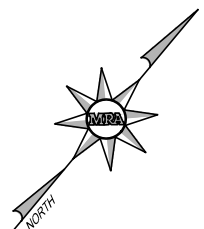
DRIVEWAY	673 SF
LEADWALK	27 SF
PUBLIC WALK	N/A SF
SOD	23,221 SF
WHC	37 LF
SHC	35 LF
PATIO	120 SF
HSE FACING	N. WEST

LEGEND

⊗ ELEC. METER

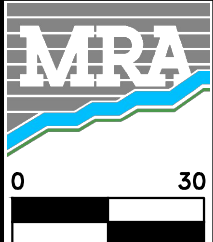
⊙ A/C UNIT

* DENOTES 10' UTILITY AND DRAINAGE EASEMENT



BUILDER

RYAN HOMES
5734 TRINITY ROAD, SUITE 200
RALEIGH, NC 27607
PHONE: 919-233-0793



MORRIS & RITCHIE ASSOCIATES OF NC, PC
ENGINEERS, ARCHITECTS, PLANNERS, SURVEYORS AND LANDSCAPE ARCHITECTS
5605 CHAPEL HILL ROAD, SUITE 112
RALEIGH, NC 27607 PHONE:
984-200-2103
FIRM LICENSES C-4182 & G-492

www.mragta.com

SITE PLAN
FOR
QUAIL GLEN
PHASE 5
LOT 106 #171 BIRD DOG DRIVE
BLACK RIVER TOWNSHIP
HARNETT COUNTY NORTH CAROLINA

SCALE: 1"=30'

DATE: MARCH 25, 2021

DRAWN BY: JOE C.

DESIGN BY: JOE C.

REVIEW BY: DARYN A.

JOB NO.: 20314