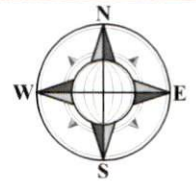
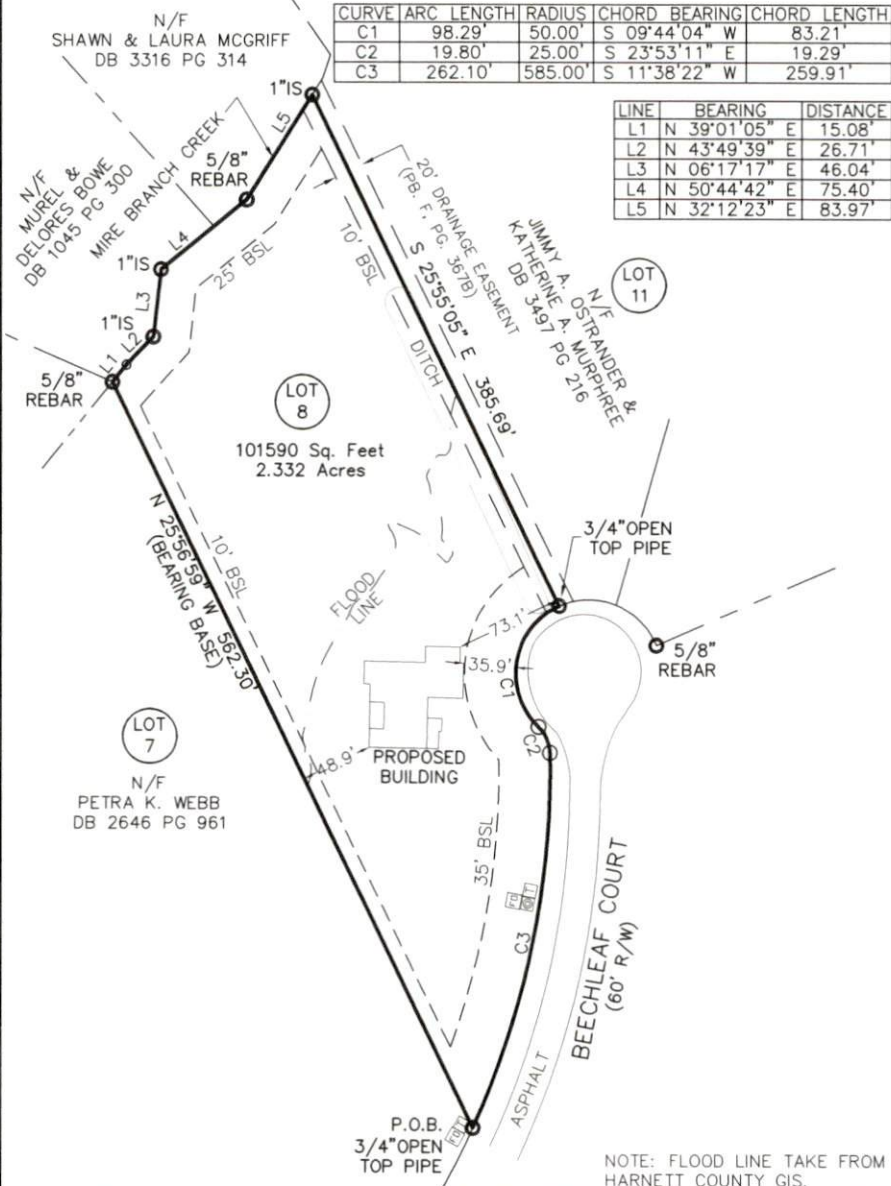


DESCRIPTION: PERMIT
 RECORDED: DB 2969, PG. 633 - PB. F, PG. 367B
 ADDRESS: 165 BEECHLEAF COURT, CAMERON, NC 28326
 COUNTY/STATE: HARNETT/NC DATE: 03/04/2021
 SCALE OF DRAWING: 1"=100' DRAWN BY: AMR
 ZONED: RA-20R REVIEWED BY: CWH
 PARCEL ID NUMBER: 039577010308

SITE DATA	
ZONING:	RA-20R
LOT SIZE	N/A
PRIMARY STREET	35' MIN
SIDE STREET	-
SIDE LOT LINE	10' MIN
REAR LOT LINE	25' MIN
BUILDING HEIGHT	40'
IMPERVIOUS MAX	20%



NORTH
 PER: PB. F, PG. 367B
 SCALE: 1"=100'



PLOT PLAN SURVEY
 PREPARED FOR: J & R HOMES
 165 BEECHLEAF COURT, CAMERON, NC 28326
 LOT 8, STONEY CREEK MANOR, SECTION 3
 BARBEQUE TOWNSHIP,
 HARNETT COUNTY, NORTH CAROLINA - 03/04/2021

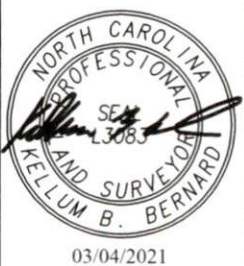
- LEGEND :
- PROPERTY CORNER FOUND (AS NOTED)
 - 5/8" REBAR WITH CAP SET
 - R/W MONUMENT
 - COMPUTED POINT
 - FIRE HYDRANT
 - ⊗ WATER METER
 - ⊗ WATER VALVE
 - ⊗ POWER POLE
 - ⊗ LIGHT POLE
 - ⊗ POWER METER
 - ⊗ POWER BOX
 - ⊗ A/C UNIT
 - ⊗ GAS METER
 - ⊗ TELEPHONE BOX
 - ⊗ CABLE BOX
 - ⊗ MANHOLE
 - ⊗ CLEAN OUT
 - ⊗ JUNCTION BOX
 - ⊗ DRAINAGE INLET
 - CONC. CONCRETE
 - EOP EDGE OF PAVEMENT
 - BSL BUILDING SETBACK
 - RB IRON REBAR
 - OTP OPEN TOP PIPE
 - X- FENCE LINE
 - R/W RIGHT-OF-WAY
 - BOM BOOK OF MAPS
 - DB DEED BOOK
 - PG PAGE

REVISION:
 04/14/2021 - ADD FLOOD LINE
 04/14/2021 - MOVE HOUSE LOCATION

PRELIMINARY PLAT, NOT FOR RECORDATION, CONVEYANCES, OR SALES. THIS PLAN MUST BE APPROVED BY ALL STATE AND LOCAL REVIEWING AUTHORITIES FOR CONCURRENCE WITH SITE ZONING AND CODE OF ORDINANCES.
NOT FOR RECORDATION

THIS PLAN WAS PREPARED FOR THE EXCLUSIVE USE OF THE PERSON, PERSONS OR ENTITY NAMED HEREON AND DOES NOT EXTEND TO ANY UNNAMED PERSON.

© COPYRIGHT 2021 BOUNDARY ZONE, INC. THIS DRAWING AND ITS REPRODUCTIONS ARE THE PROPERTY OF THE SURVEYOR AND MAY NOT BE REPRODUCED, PUBLISHED OR USED IN ANY WAY WITHOUT THE WRITTEN PERMISSION OF BOUNDARY ZONE, INC.



BOUNDARY zone, inc. LAND SURVEYING SERVICES & LAND PLANNING SERVICES
 SURVEYING LANDSCAPE ARCHITECTURE LAND PLANNING
 WWW.BOUNDARYZONE.COM (919) 363-9226 (770) 271-5772

CORPORATE OFFICE
 454 SATELLITE BLVD, SUITE 200
 SUWANEE, GA 30024

RALEIGH OFFICE
 8024 GLENWOOD AVE, SUITE 109
 RALEIGH, NC 27612

PROJECT R21043-01

SHEET 1 OF 1

