

Harnett County Department of Public Health

PERMIT # SFD2104-002122

Operation Permit

SL 1703

New Installation Septic Tank Nitrification Line Repair Expansion

PROPERTY LOCATION: 125 PLANTERS LN. (RED HILL CH. RD.)

Name: (owner) SMITH DOUGLAS HOMES SUBDIVISION CANYE MILL ESTS LOT # 3

System Installer: A+2 ENTERPRISE

Basement with plumbing: Garage Number of Bedrooms 4

Type of Water Supply: Community Public Well Distance from well NA feet

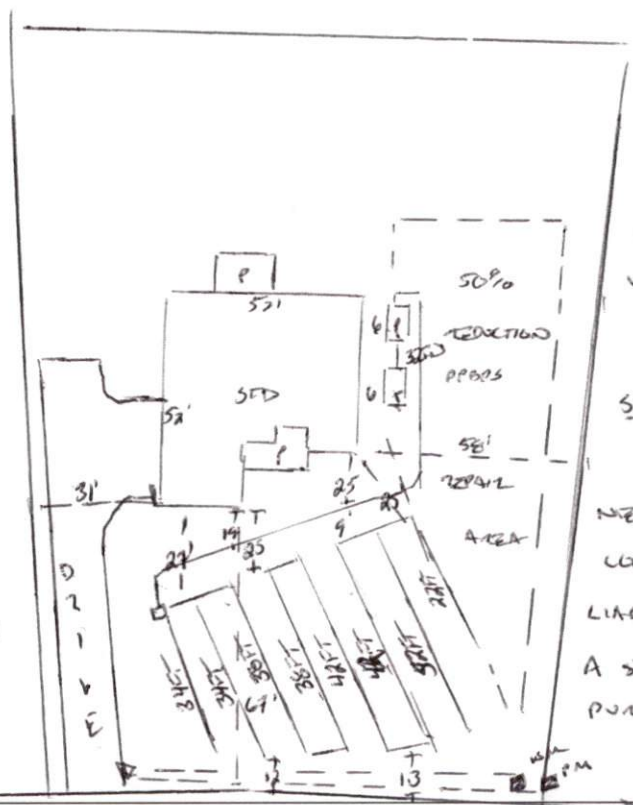
System Type: 50% REDUCTION SYSTEM IIB Types V and VI Systems expire in 5 years.

(In accordance with Table V a)

Owner must contact Health Department 6 months prior to expiration for permit renewal.

This system has been installed in compliance with applicable North Carolina General Statutes, Rules for Sewage Treatment and Disposal, and all conditions of the Improvement Permit and Construction Authorization.

- * PUMP TO MEDIUM D-BOX SERIAL DISTRIBUTION
- * UTILITIES RUN @ LOAD AND DUMP DRIVEWAY
- * 50% REDUCTION REPAIR AREA
- * INSTALL: 01/12/2022
- * PUMP + ALARM: 01/13/2022
- * FLOW REDUCTION CERTIFICATION: 01/24/2022



FLOW REDUCTION

SPECIFIED LOW-FLOW FIXTURES, LOW-FLOW TECHNOLOGIES, OR REPLACEMENT W/ EQUAL OR LESS FLOW RATES ARE TO REMAIN IN USE FOR THE LIFE OF THE SEPTIC SYSTEM

SESSION LAW 2014-120
SECTION 53:

NEITHER THE STATE NOR ANY LOCAL HEALTH DEPARTMENT SHALL BE LIABLE FOR ANY DAMAGES CAUSED BY A SYSTEM APPROVED OR PERMITTED PURSUANT TO THIS SECTION [DUE TO FLOW REDUCTION]

PERMIT CONDITIONS:

- I. Performance: System shall perform in accordance with Rule .1961.
- II. Monitoring: As required by Rule .1961.
- III. Maintenance: As required by Rule .1961. Other: _____
Subsurface system operator required? Yes No
If yes, see attached sheet for additional operation conditions, maintenance and reporting.
- IV. Operation: _____
- V. Other: _____

D-Box Pump Alarm H2O Line PWR Line

Following are the specifications for the sewage disposal system on the above captioned property.

Type of system: Conventional Other Q4 CHANNEL IIB Septic Tank: 1000 gallons Pump Tank: 1000 gallons

Subsurface No. of exact length width of depth of
Drainage Field ditches of each ditch ditches ditches

French Drain Required: _____ Linear feet

Authorized State Agent [Signature] Date 01/24/2022



Bateman Civil Survey Company, PC

2524 Reliance Avenue
Apex, NC 27539
(919) 577-1080/fax (919) 577-1080

January 4, 2022

Harnett County Staff
Harnett County Environmental Health
307 W Cornelius Harnett Blvd, Lillington, NC 27546

RE: Flow Reduction Certification and As-built

Cane Mill Estates Lot 3
125 Planters Lane, Coats, Harnett Co
Coats, Harnett Co., NC
Job #3618

Dear Harnett County Staff:

Bateman Civil Survey Company employees in conjunction with Central Carolina Soil Consulting, PLLC (CCSC), reviewed the fixtures receipt from Celey's Plumbing that were installed in the house at Cane Mill Estates Lot 3. Several of the fixture selections were changed during construction of the house. The original proposed flow reduction had an overall reduction of 41% for a 4-bedroom house with a 25% requested reduction in flow, reducing the flow from 480 gallons per day to 360 gallons per day. The as-built overall flow reduction is now 42%.

These fixtures or equivalent flow fixtures are required for the life of the home. Any change in fixtures that results in a change of the flow rates must be approved by an Engineer and Harnett County Environmental Health Services.

If you need further information or have any questions please contact Matt Burdette at (919) 422-2827 or Tom Speight at 919-577-1080 2524 Reliance Ave, Apex NC 27539

Sincerely,

BATEMAN CIVIL SURVEY COMPANY
NCBELS# C-2378.



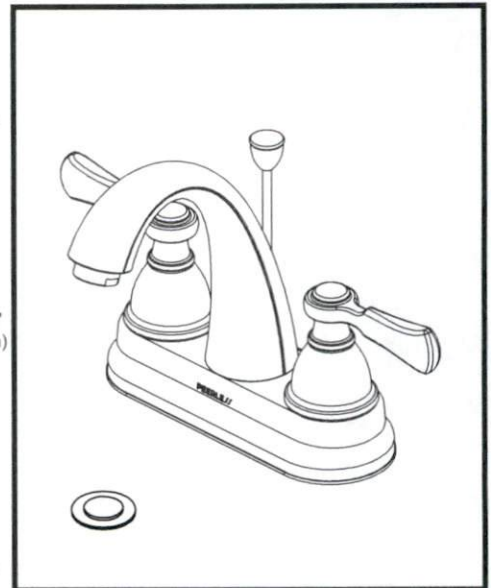
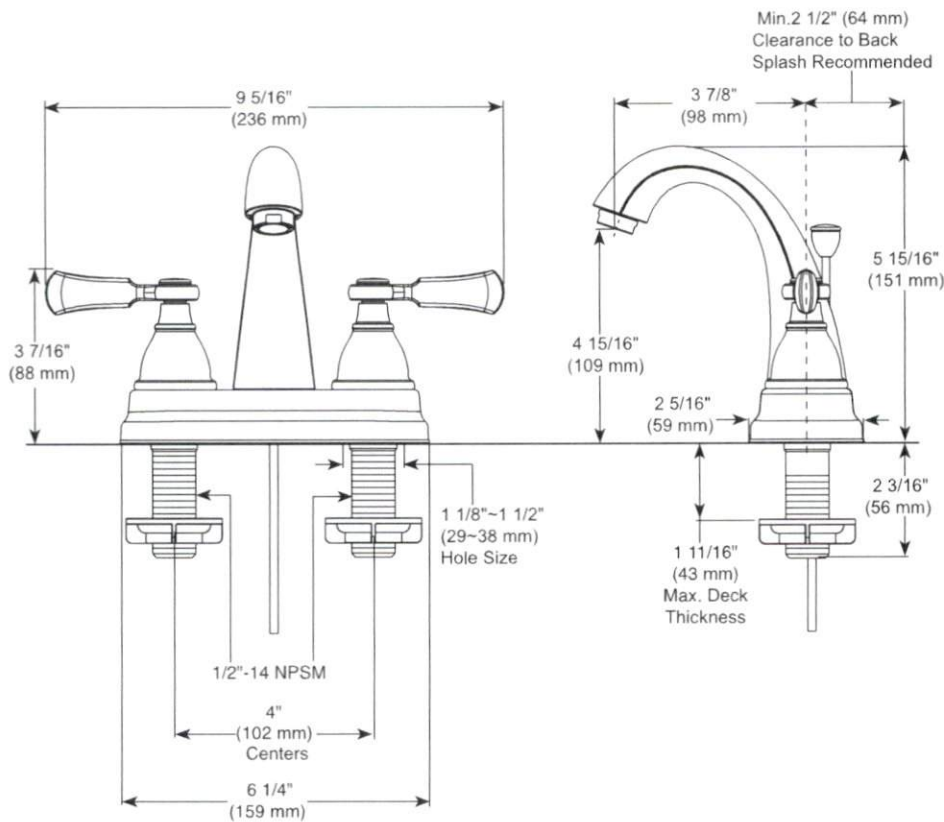
Thomas Speight, P.E.
(seal)

Cane Mill Estates Lot 3 AS BUILT						
	Item		Gal/min. or flush	Number of Fixures	Base Flow From 1982	Percent Water Savings
Master	Lavatory Faucet	Peerless P2565LF	1.0 gal/minute	2	3.0 gal/minute	67%
	Shower Head	Peerless ptt14265	1.5 gal/minute	1	5.5 gal/minute	73%
	Tub Trim	Fill & Release	Fill & Release	1	Fill & Release	0%
Kitchen	Kitchen Sink Faucet	Peerless P7965LF	1.5 gal/minute	1	3.0 gal/minute	50%
Hall	Lavatory Faucet	Peerless P2565LF	1.0 gal/minute	1	3.0 gal/minute	67%
	Shower Head	Peerless ptt14465	1.5 gal/minute	1	5.5 gal/minute	73%
Toilets	Master, Hall	Mansfield 135-3173	1.28 gal /flush	3	3.5 gal/minute	63%

FIXTURES	TOILET	FAUCET	SHOWER	LEAK	BATH	OTHER	DISHWASHER	CLOTHES WASHER	TOTALS
PERCENT OF HOUSE HOLD WATER USE	24%	20%	20%	12%	3%	3%	2%	16%	100%
GALLONS PER DAY (480 BASE)	115	96	96	58	14	14	10	77	480
PERCENT OF SAVINGS FROM WATER SAVING FIXURES	63%	63% avg	73%	0%	0%	0%	0%	0%	42%
ADJUSTED FLOW (GALLONS)	43	36	26	58	14	14	10	77	278

PEERLESS®

P2565LF▲



BATHROOM FAUCET:

- Elmhurst™ Collection
- Two Handle Centerset
- 4 Inch 3 Hole Sink Applications

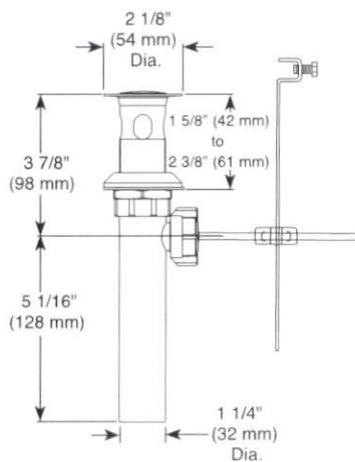
STANDARD SPECIFICATIONS:

- Maximum 1.0 gpm @ 60 psi, 3.8 L/min @ 414 kPa
- Three hole mount
- 1/4 turn handle stops
- 1/2"-14 NPSM threaded male inlet shanks
- Ceramic cartridge
- Models have drain with 50/50 pop-up type fitting with plated flange and stopper

WARRANTY:

- Parts and Finish - Lifetime limited warranty; or for commercial purchasers, 10 years for multi-family residential (apartments and condominiums) and 5 years for all other commercial uses, in each case from the date of purchase.

RP38958▲ 50/50 Pop-Up



▲ Designate proper finish suffix

PSP-L-P2565LF Rev. A



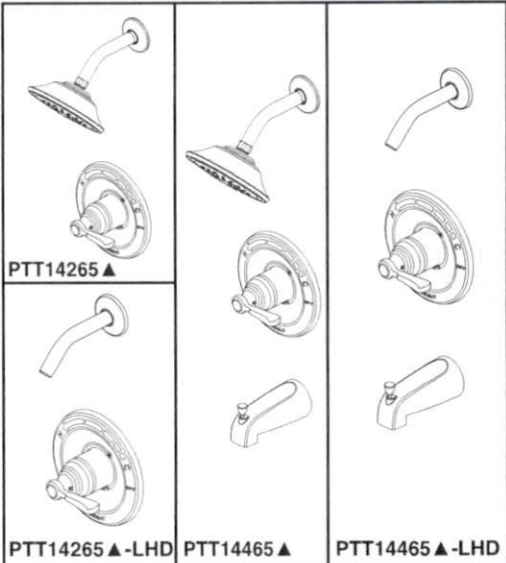
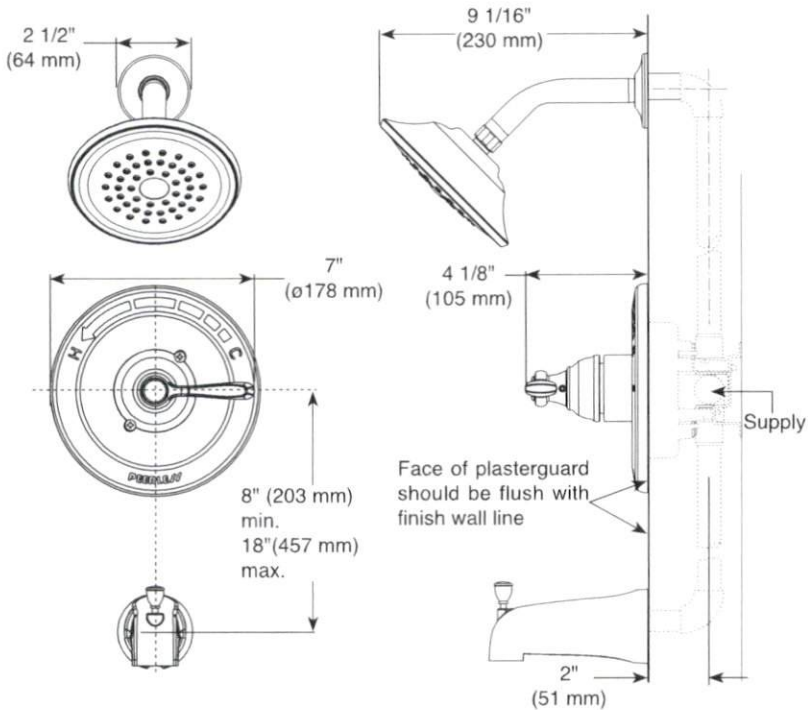
COMPLIES WITH:

- ASME A112.18.1 / CSA B125.1
- ASME A112.18.2 / CSA B125.2
- EPA WaterSense®

 Indicates compliance to ICC/ANSI A117.1

PEERLESS®

PTT14265▲
 PTT14265▲-LHD
 PTT14465▲
 PTT14465▲-LHD



TUB AND SHOWER FAUCET TRIM

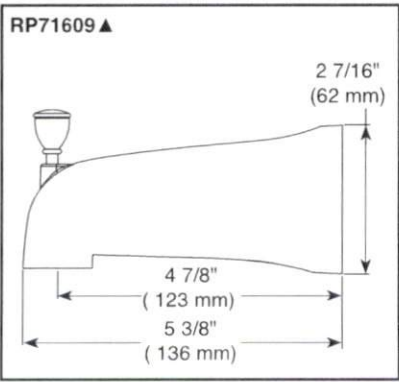
- Elmhurst™ Collection
- Shower Only (PTT14265▲ & PTT14265▲-LHD)
- Tub/Shower (PTT14465▲ & PTT14465▲-LHD)

STANDARD SPECIFICATIONS:

- Maintains a balanced pressure of hot and cold water even when a valve is turned on or off elsewhere in the system.
- For use with MultiChoice® Universal rough valve body (R10000 Series); not included.
- Back-to-back installation capability.
- Temperature only controlled with handle rotating a maximum of 120° from full cold to the full hot.
- Cartridge utilise integral check valve to prevent the cross flow of water within the valve.
- Shower head maximum flow rate 1.5 gpm @ 80 psi, 5.7 L/min @ 550 kPa.
- Single setting shower head.
- Slip-on tub spout.

WARRANTY:

- Parts and Finish - Lifetime limited warranty; or for commercial purchasers, 10 years for multi-family residential (apartments and condominiums) and 5 years for all other commercial uses, in each case from the date of purchase.



▲ Designate proper finish suffix



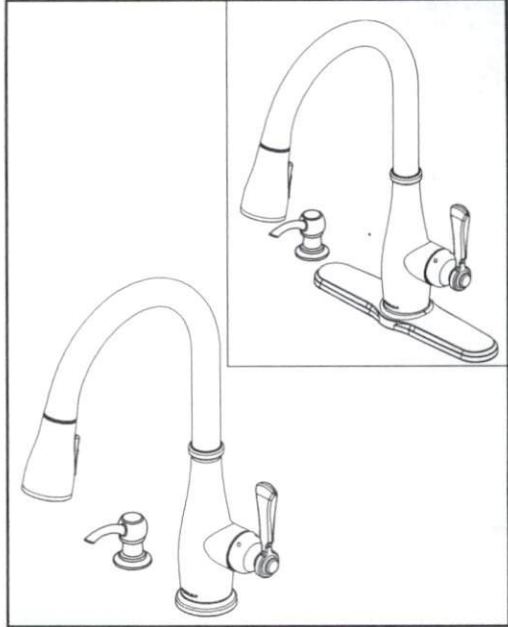
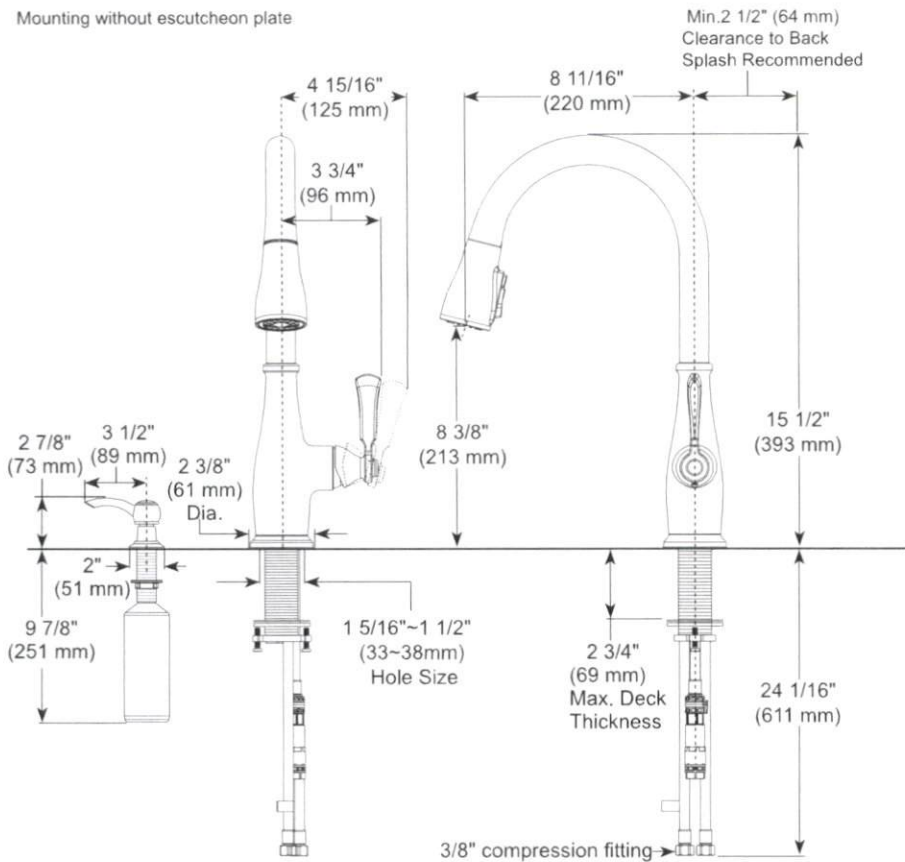
COMPLIES WITH

- ASME A112.18.1 / CSA B125.1
 - EPA WaterSense® - Applies to PTT14265 & PTT14465 only
- Indicates compliance to ICC/ANSI A117.1 - Valve control only

PEERLESS®

P7965LF▲

Mounting without escutcheon plate



KITCHEN FAUCETS

- Elmhurst™ Collection
- Single handle pull-down
- 1, 2, 3 or 4 Hole Sink Applications

STANDARD SPECIFICATIONS:

- Maximum 1.5 gpm @ 60 psi, 5.7 L/min @ 414 kPa
- One, two, three, four hole mount options (escutcheon and soap dispenser optional, sold separately)
- 3 function wand: aerated stream, spray, power spray
- Dual integral check valves in sprayer
- Ceramic cartridge
- Spout rotates 360°
- Red/Blue indicator markings
- Polymer braided flexible supply hose with 3/8" compression fitting - 24 1/16" (611 mm) long

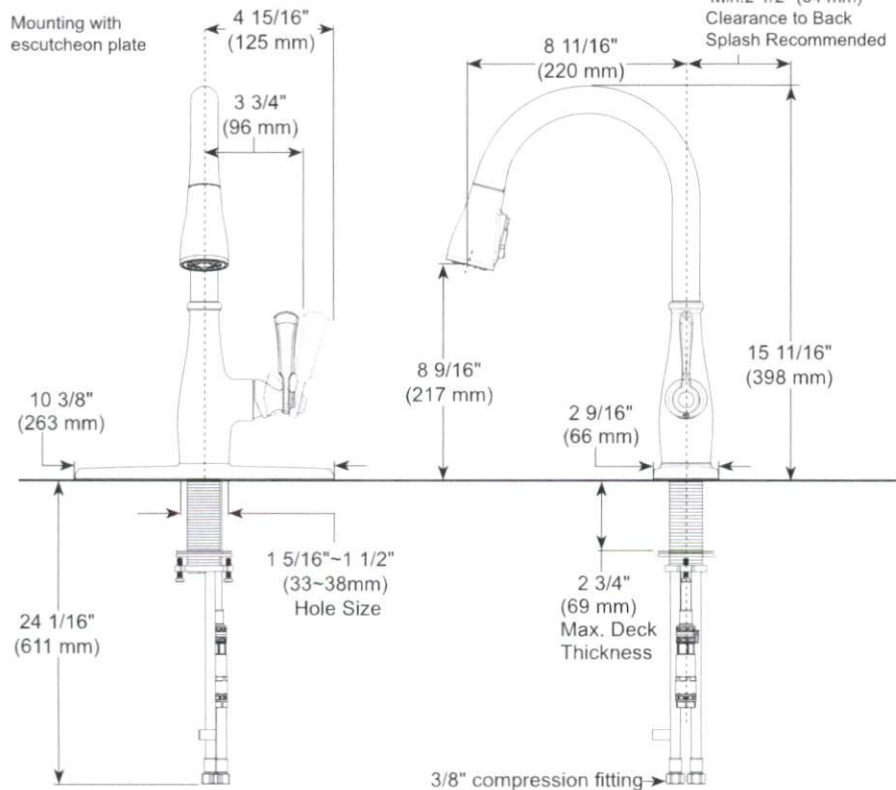
WARRANTY:

- Parts and Finish - Lifetime limited warranty; or for commercial purchasers, 10 years for multi-family residential (apartments and condominiums) and 5 years for all other commercial uses, in each case from the date of purchase.

COMPLIES WITH:

- ASME A112.18.1 / CSA B125.1
- Indicates compliance to
- ICC/ANSI A117.1 - Valve control only

Mounting with escutcheon plate



▲ Designate proper finish suffix

PSP-K-P7965LF Rev B

135-3173

Alto® 1.28

Elongated Front, Vitreous China, Two-Piece Toilet



Features

- 3 bolt tank-to-bowl connection
- 1.28 gpf / 4.86 lpf low water consumption
- Uses 20% less water than conventional toilets
- Elongated front bowl
- 3" hybrid flush valve
- Pilot operated fill valve
- 12" rough-in
- Color-match trip lever
- 2" glazed trapway
- The Mansfield® limited lifetime warranty
- Available in white and standard colors: biscuit & bone



Model 135-3173
Toilet seat not included



*Also available as a complete toilet package.

Components

Model #	Description	Codes/Standards
135-3173	Elongated front, two-piece toilet. Less toilet seat and supply. Specify color.	
135	Elongated front toilet bowl only. Less toilet seat. Specify color.	
3173	Tank and cover only, with left hand, front-mount, color-match trip lever. Pilot valve. Less supply. Specify color.	
3121	Same as 3173 with Fluidmaster pilot valve and hybrid flush valve.	
3125	Tank and cover only, for 14" rough-in, with left hand, front-mount, color-match, plastic trip lever. Less supply. Specify color.	
*4135CTK	Elongated front, complete toilet kit. Includes toilet seat, tank and bowl, flange bolts, wax ring with polyethylene flange and instructions.	

Other Options:

3173RH	Same as model 3173, with right hand, color-match trip lever. Less supply. Specify color.	
3174	Same as model 3173, with tank liner.	
3122	Same as model 3121, with tank liner.	
3121RH	Same as 3121 with right hand trip lever.	
3120	Same as 3121 with chrome trip lever.	
3120RH	Same as 3120 with right hand trip lever.	
*4135LTCTK	Same as 4135CTK, with tank liner.	
SB200	Alto Elongated, toilet seat. Specify color.	

