



NOTICE TO CONTRACTOR
 All construction must comply with current NC Building Codes and is subject to field inspection and verification.

APPROVED
 Licensed building only review.
 Permit holder responsible for full compliance with the code.

04/13/2021




SPACE DATA

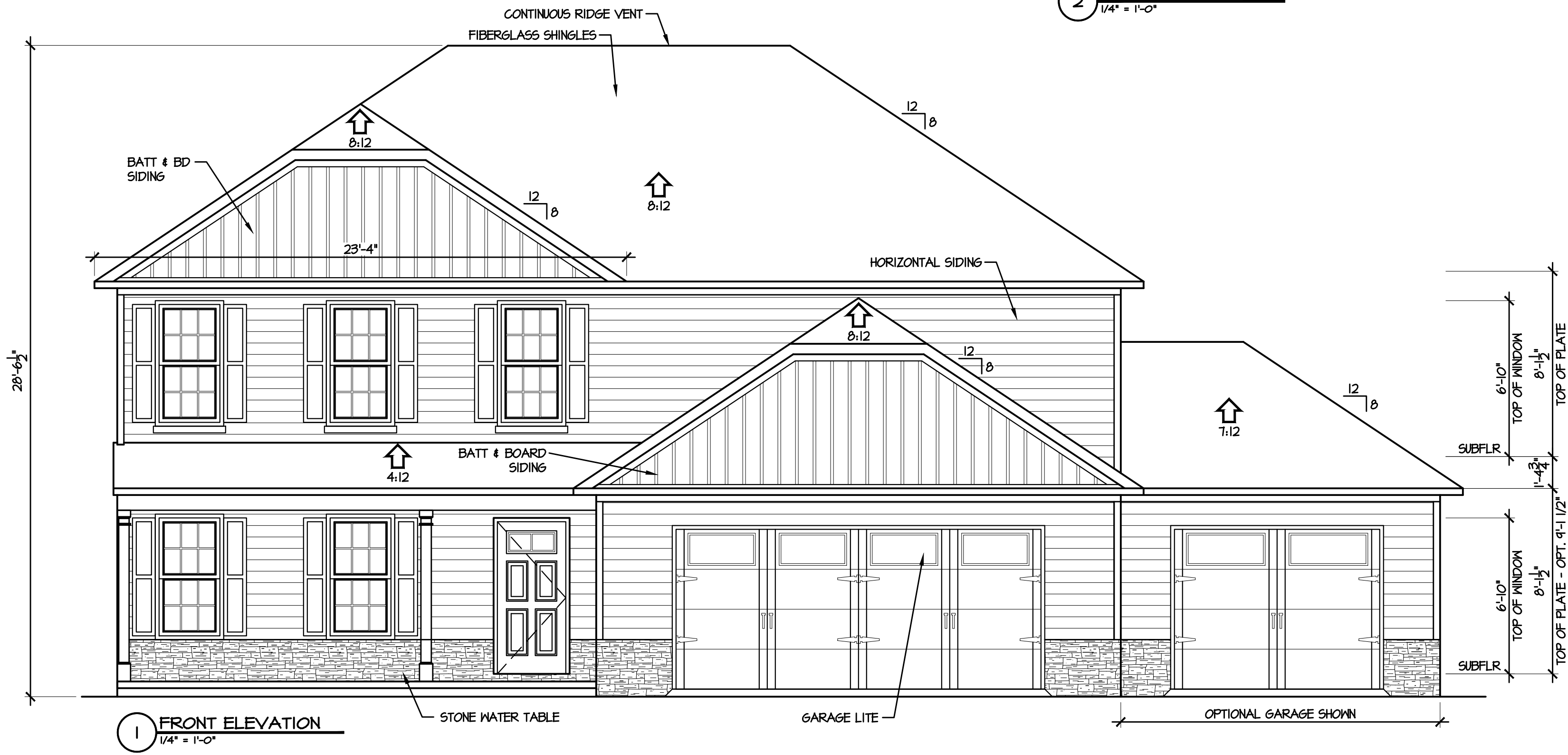
FIRST FLOOR, HEATED:	1026 SF
SECOND FLOOR, HEATED:	1276 SF
FRONT PORCH:	105 SF
GARAGE:	480 SF
THIRD CAR GARAGE OPT:	280 SF

ATTIC VENT CALC'S.

ATTIC AREA: 1276 S.F.

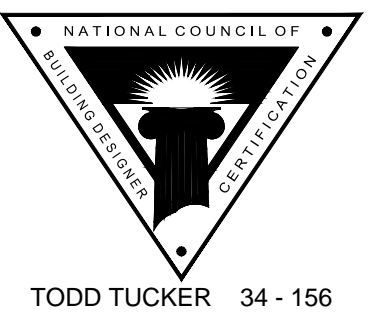
GABLE VENTS:	N/A
RIDGE VENTS:	62 L.F. / 0 S.F. (62%)
SOFFIT VENT:	76 L.F. / 5 S.F. (38%)
RATIO:	$\frac{13}{1276} = \frac{1}{99}$

2 REAR ELEVATION
 1/4" = 1'-0"



1 FRONT ELEVATION
 1/4" = 1'-0"

Caviness Land



TODD TUCKER 34 - 156

© 2019 CavLand
 1041-B Robeson St
 Fayetteville, NC 28305
 Office: 910-339-6330
 Fax: 910-339-6333

CL 2302

ELEVATIONS

SCALE:
 1/4" = 1'-0"

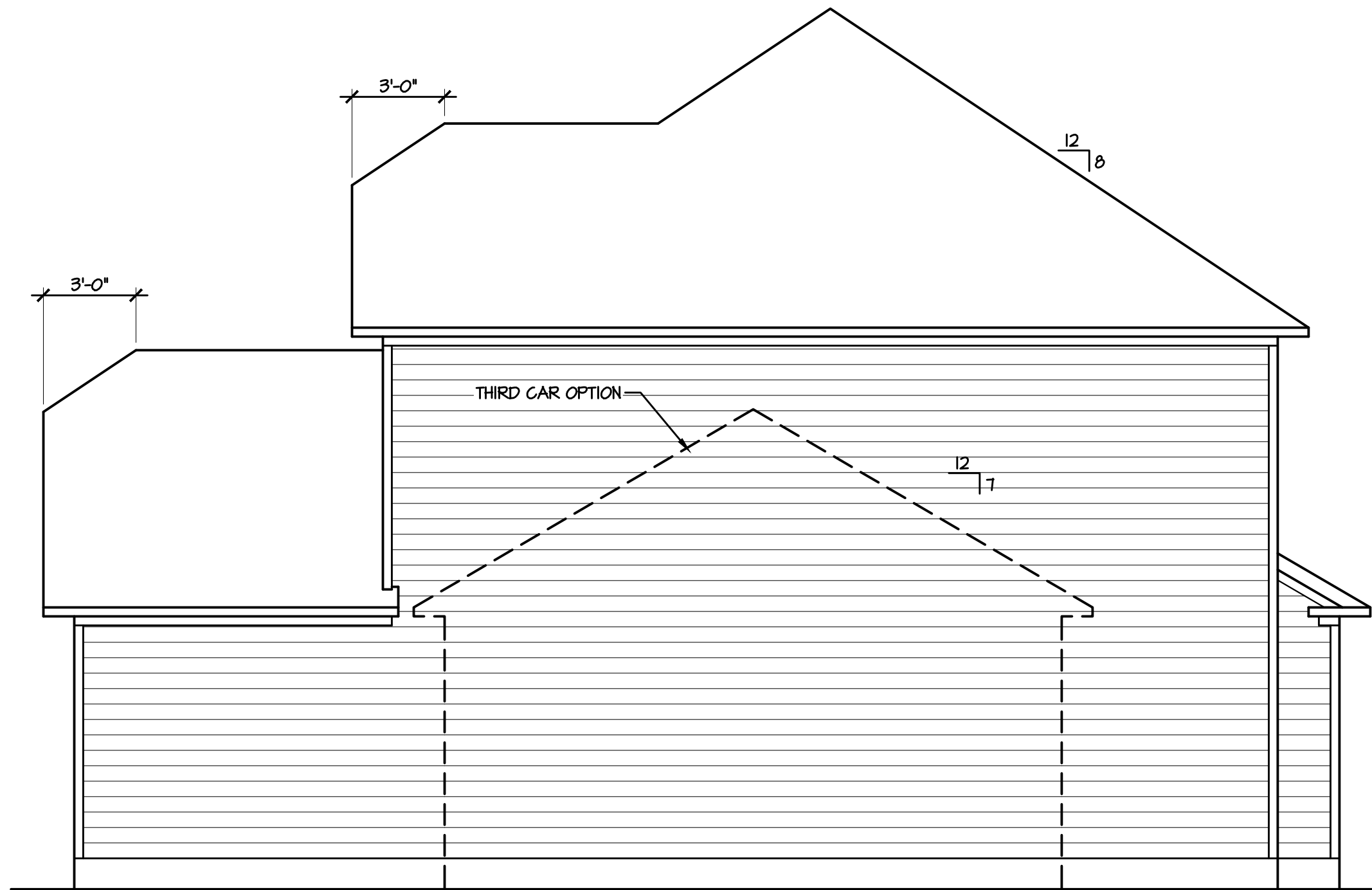
DATE:
 APRIL 2020

PLAN:
 CL 2302

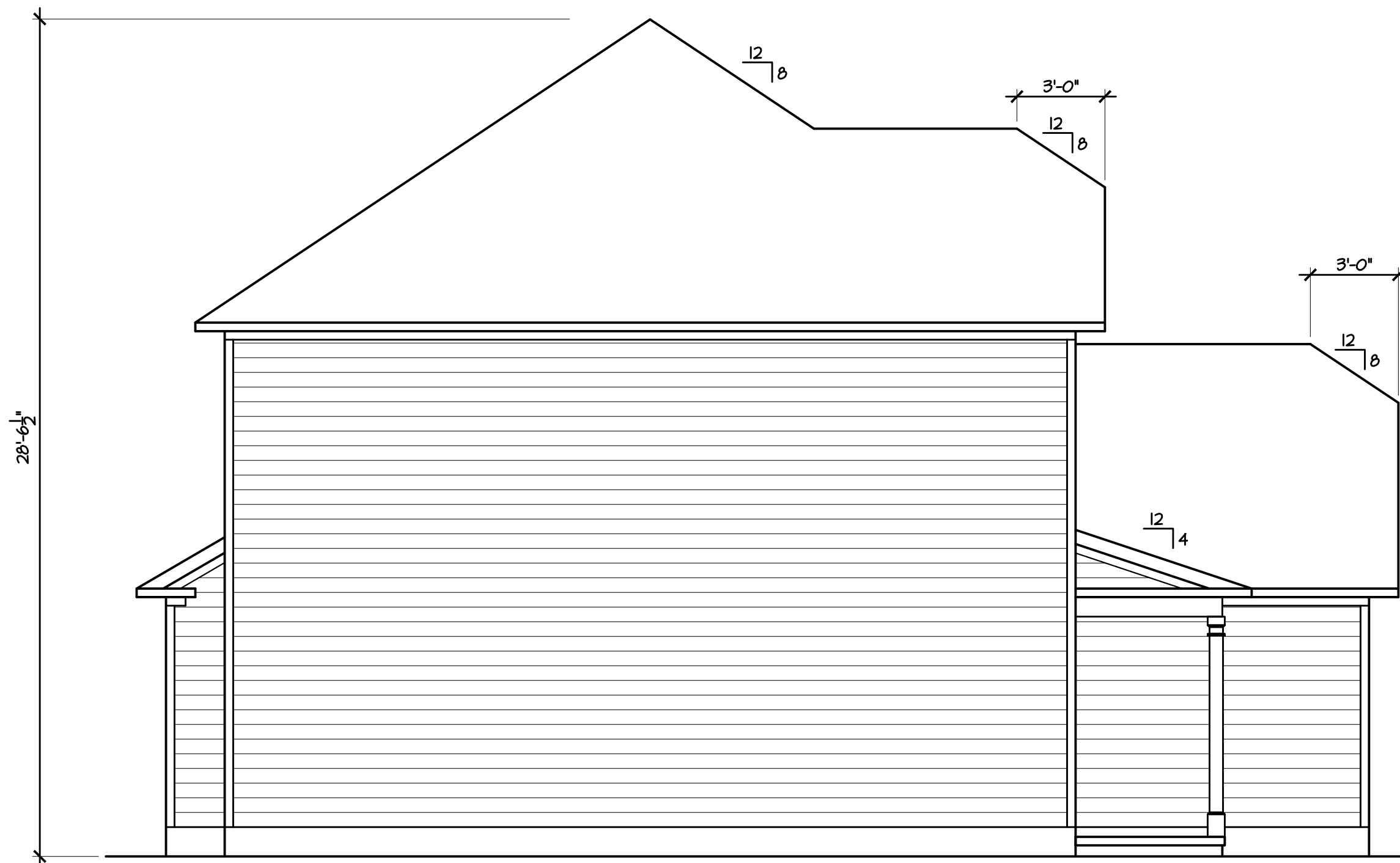
LOT NO:

SHEET NO:
1

C:\Projects\Caviness Land\CL 2302\CL 2302 GR 7-21-20.dwg, 7/21/2020 8:33:10 PM



2 RIGHT ELEVATION
1/4" = 1'-0"



1 LEFT ELEVATION
1/4" = 1'-0"

C:\Projects\Caviness Land\CL 2302\CL 2302 GR 7-21-20.dwg 7/21/2020 8:33:10 PM



TODD TUCKER 34 - 156

© 2019 CavLand
1041-B Robeson St
Fayetteville, NC 28305
Office: 910-339-6330
Fax: 910-339-6333

CL 2302

ELEVATIONS

SCALE:
1/4" = 1'-0"

DATE:
APRIL 2020

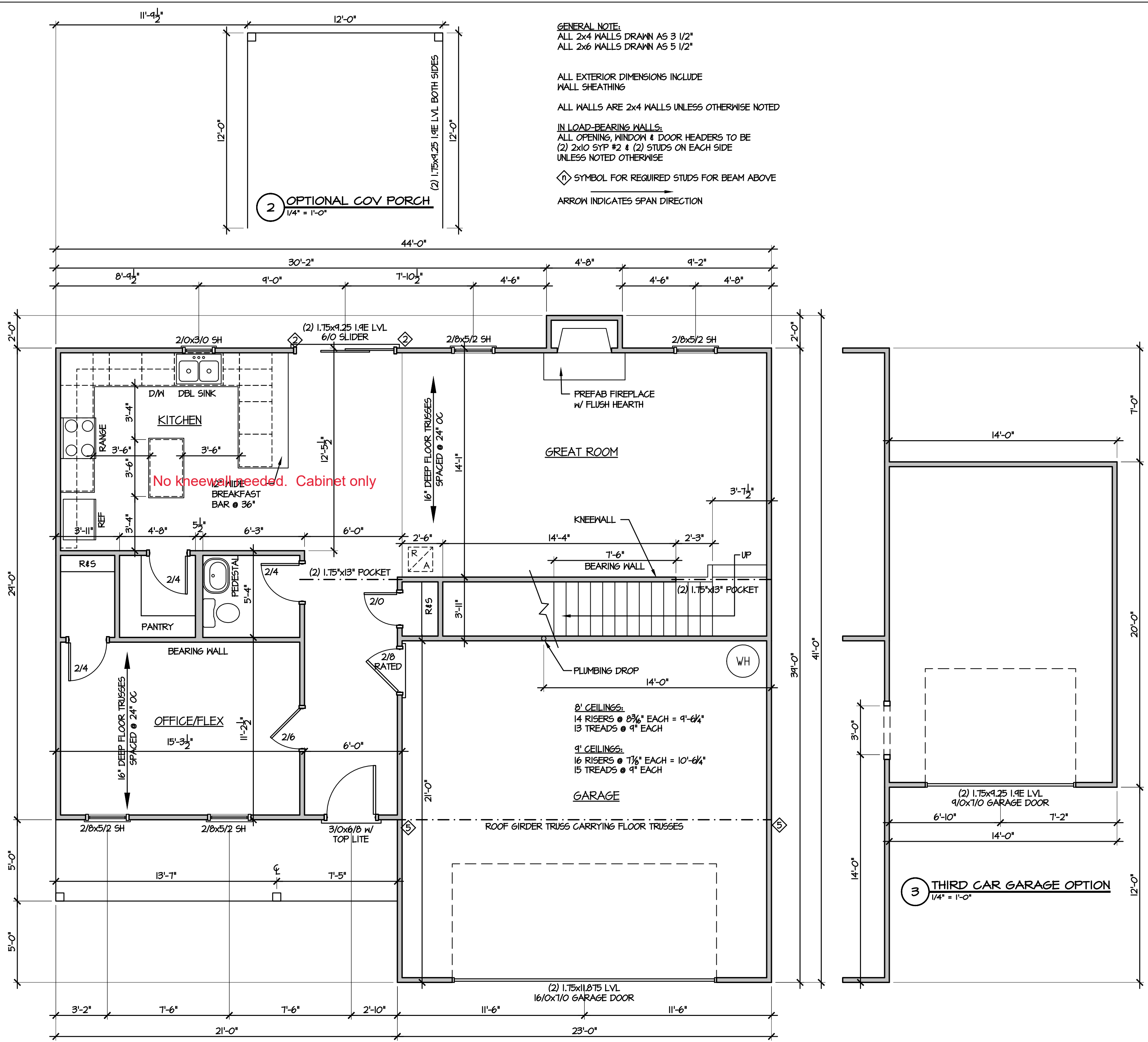
PLAN:
CL 2302

LOT NO:

SHEET NO:

2

C:\Projects\Caviness Land\CL 2302\CL 2302 GR 7-21-20.dwg 7/21/2020 8:33:11 PM



GENERAL NOTE:
 ALL 2x4 WALLS DRAWN AS 3 1/2"
 ALL 2x6 WALLS DRAWN AS 5 1/2"

ALL EXTERIOR DIMENSIONS INCLUDE WALL SHEATHING

ALL WALLS ARE 2x4 WALLS UNLESS OTHERWISE NOTED

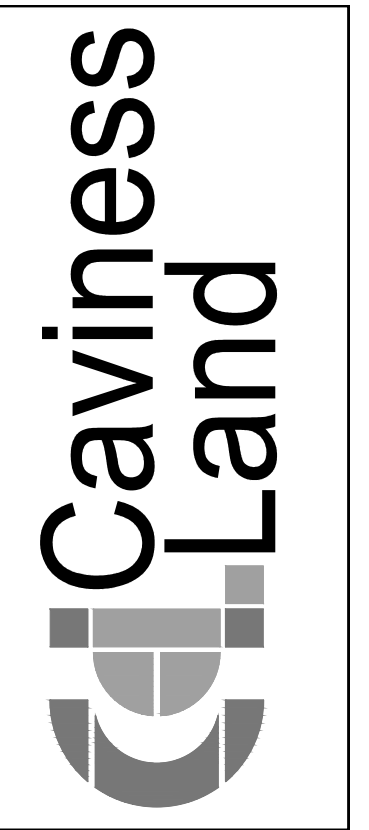
IN LOAD-BEARING WALLS:
 ALL OPENING, WINDOW & DOOR HEADERS TO BE
 (2) 2x10 SYP #2 & (2) STUDS ON EACH SIDE
 UNLESS NOTED OTHERWISE

◊ SYMBOL FOR REQUIRED STUDS FOR BEAM ABOVE
 → ARROW INDICATES SPAN DIRECTION

2 **OPTIONAL COV PORCH**
 1/4" = 1'-0"

1 **FIRST FLOOR**
 1/4" = 1'-0"

3 **THIRD CAR GARAGE OPTION**
 1/4" = 1'-0"



© 2019 CavLand
 1041-B Robeson St
 Fayetteville, NC 28305
 Office: 910-339-6330
 Fax: 910-339-6333

CL 2302

FIRST FLOOR PLAN

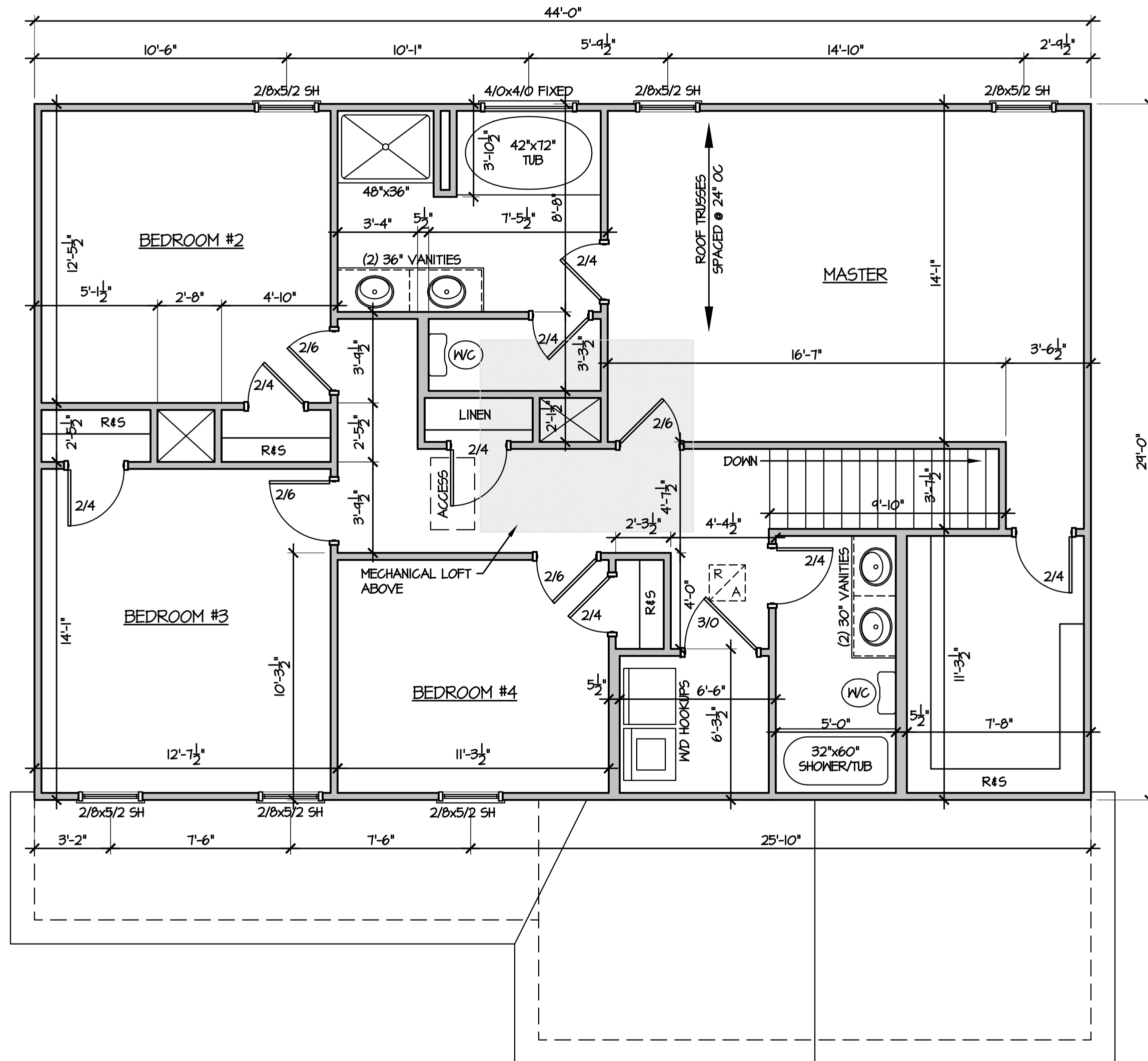
SCALE:
 1/4" = 1'-0"

DATE:
 APRIL 2020

PLAN:
 CL 2302

LOT NO:

SHEET NO:
 4



CL 2302

SECOND FLOOR PLAN

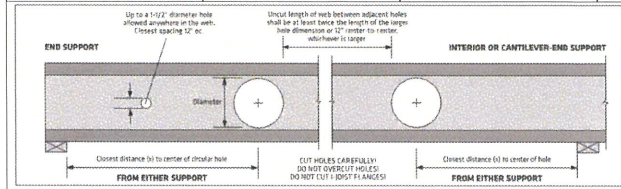
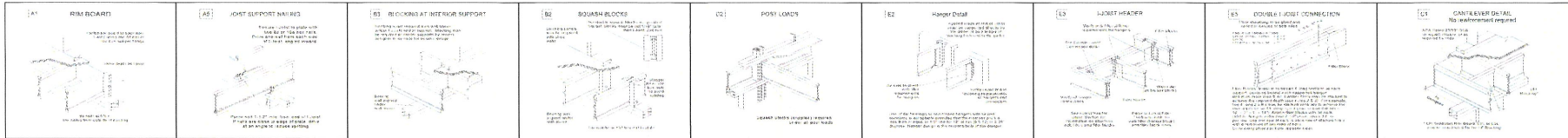
SCALE:
1/4" = 1'-0"

DATE:
APRIL 2020

PLAN:
CL 2302

LOT NO:

SHEET NO:



TO USE:

- Select the required joist and design.
- Determine the support condition for the nearest bearing or support or interior support (including cantilever end support).
- Select the max corresponding to the required Clear Span. For spans between those listed, use the next largest value.
- Select the max column corresponding to the required Hole Diameter. For diameters between those listed, use the next largest value.
- The intersection of the Clear Span and Hole Diameter values gives the maximum distance from the inside face of bearing to the center of a circular hole.
- Double check the distance to the other support using the appropriate support condition.

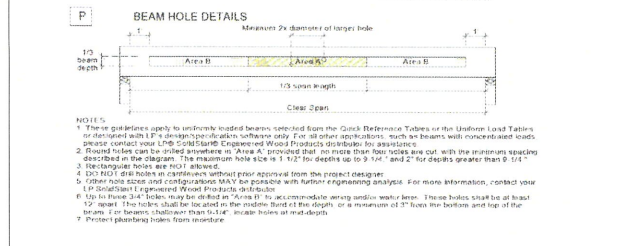
Depth	Clear Span (ft)	Distance from End Support						Distance from Interior or Cantilever-End Support					
		2"	4"	6"	8"	10"	12"	2"	4"	6"	8"	10"	12"
14"	14'	1'-0"	1'-0"	1'-0"	1'-0"	2'-2"	-	1'-0"	1'-5"	2'-7"	3'-9"	-	-
	18'	1'-0"	1'-0"	1'-0"	1'-0"	4'-6"	-	1'-8"	2'-10"	3'-11"	5'-1"	6'-3"	-
	22'	1'-5"	2'-9"	4'-1"	5'-6"	7'-0"	-	4'-2"	6'-5"	7'-7"	8'-9"	-	-
	26'	3'-0"	4'-4"	6'-5"	8'-0"	9'-8"	-	6'-8"	7'-10"	8'-11"	10'-1"	11'-4"	-
16"	18'	1'-0"	1'-0"	1'-4"	2'-5"	3'-7"	4'-11"	1'-5"	2'-8"	3'-6"	4'-8"	5'-6"	6'-4"
	22'	1'-4"	2'-5"	3'-6"	4'-9"	6'-1"	7'-5"	4'-0"	5'-0"	6'-0"	7'-0"	8'-0"	9'-0"
	26'	3'-6"	4'-8"	5'-11"	7'-2"	8'-7"	10'-1"	5'-6"	7'-6"	8'-6"	9'-6"	10'-6"	11'-9"
	30'	5'-9"	7'-0"	8'-4"	9'-9"	11'-3"	12'-10"	9'-0"	11'-0"	12'-0"	13'-2"	14'-8"	-

DESIGN ASSUMPTIONS:

- The hole locations listed above are valid for floor joists supporting only uniform loads. The total uniform load shall not exceed 130 psf (e.g. 40 psf Live Load and 75 psf Dead Load (spaced 24" o.c.)).
- Hole locations are measured from the inside face of bearing to the center of a circular hole, from the rafter support.
- Clear Span has not been verified for these joists and is shown for informational purposes only. Verify that the joist selected will work for the span and loading conditions needed before checking hole location.
- The maximum hole depth for circular holes is the joist Depth less 4", except the maximum hole depth is 1" for 12" LPI joists, and 8" for 11-1/2" LPI joists.
- Holes cannot be located in the span where a design professional.

NOTES:

- Holes may be placed anywhere within the depth of the joist. A minimum 1/4" clear distance is required between the hole and the flanges.
- Round holes up to 1 1/2" diameter may be placed anywhere on the web.
- Pre-drilled "screeds" may be neglected when locating new holes.
- Joist larger than 3 1/2" are not permitted as columns without special engineering.
- Multiple holes shall have a clear separation along the length of the joist at least twice the length of the larger adjacent hole, or a minimum of 17" center to center, whichever is greater.
- Multiple holes may be spaced closer provided they fit within the boundary of an acceptable single hole. Example: two 1" round holes spaced close together provided that a 3" high by 9" long rectangle can fit around the holes.
- For conditions not covered in this table, use LPI's design software or contact your local LPI Sales/Engineer/Engineer Wood Products Specialist for more information.



Important Notes: VAWARNING: Failure to follow proper procedures for handling, storage and installation can result in unacceptable performance, damage and voided warranty.

These instructions are intended as a guide to good practice in the handling, storage and installation of LPI's products. LPI's products are designed to be used in accordance with the applicable code requirements. The user assumes all responsibility for the proper use of the products.

WARRANTY: LPI warrants its products to be free from manufacturing defects in materials and workmanship for a period of 10 years from the date of manufacture. This warranty is limited to the products as shown in the applicable code requirements. LPI does not warrant the products for use in any other application or for any other purpose. LPI's products are not intended for use in any other application or for any other purpose. LPI's products are not intended for use in any other application or for any other purpose.

2nd Flr Joist (Flush)

Label	Description	Width	Depth	Qty	Plies	Pcs	Length
J7	LPI 20Flr	2.5	14	1	1	1	854-0.0
J5	LPI 20Flr	2.5	14	6	1	6	304-0.0
J4	LPI 20Flr	2.5	14	2	1	2	184-0.0
J10	LPI 20Flr	2.5	14	3	1	3	164-0.0
J6	LPI 20Flr	2.5	14	3	1	3	164-0.0
J9	LPI 20Flr	2.5	14	6	1	6	144-0.0
J2	LPI 20Flr	2.5	14	2	1	2	144-0.0
J8	LPI 20Flr	2.5	14	6	1	6	124-0.0
J1	LPI 20Flr	2.5	14	3	1	3	44-0.0

LVL LSL (Flush)

Label	Description	Width	Depth	Qty	Plies	Pcs	Length
L11A	LPI-LVL 1.55I	1.75	14	1	1	1	8-0.0
L14A	LPI-LVL 1.55I	4.5	14	1	1	1	8-0.0
L13	LPI-LVL 1.55I	1.75	14	1	1	1	8-0.0
L11	LPI-LVL 2800B-2-0	1.75	24	1	2	2	24-0.0

LVL LSL (Dropped)

Label	Description	Width	Depth	Qty	Plies	Pcs	Length
L18B	LPI-LVL 1.55I	4.5	9.75	2	1	2	12-0.0
L19A	LPI-LVL 1.55I	3.5	9.75	1	1	1	8-0.0
L19C	LPI-LVL 1.55I	3.5	11.875	1	1	1	24-0.0

Beam By Others (Dropped)

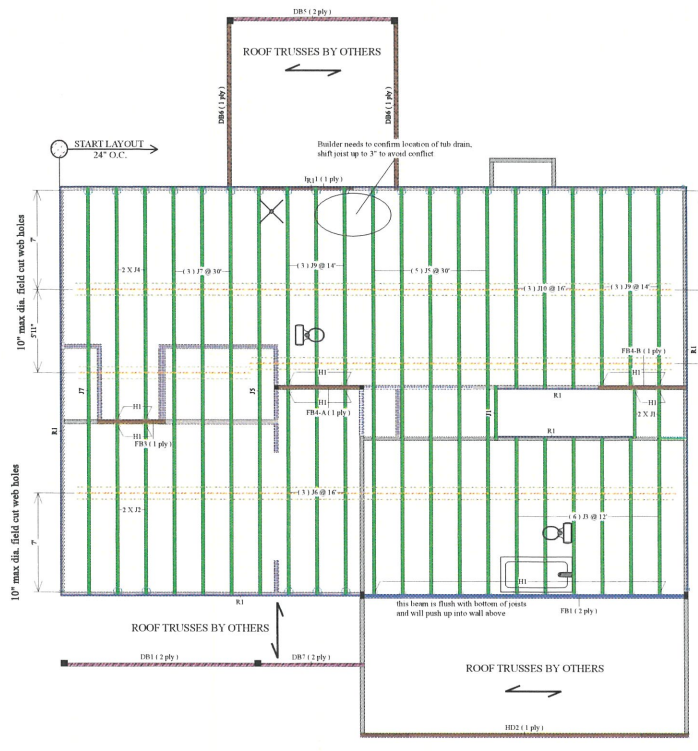
Label	Description	Width	Depth	Qty	Plies	Pcs	Length
L19A	LPI-LVL 1.55I	3.5	9.75	2	1	2	12-0.0
L19B	LPI-LVL 1.55I	3.5	9.75	1	1	1	8-0.0
L19C	LPI-LVL 1.55I	3.5	11.875	1	1	1	24-0.0

Rim Board

Label	Description	Width	Depth	Qty	Plies	Pcs	Length
R1	LPI APA Rated OSB 1125 X 14	11.25	14	1	1	12	12-0.0

Hanger

Label	Pcs	Description	Skew	Slope	Fasteners	Supported Member
H1	26	HUS2-5614 (6mm)			12 10d	



2ND FLOOR FRAMING
SCALE: 1/4" = 1'



2160 Satellite Blvd., Suite 450
Duluth, GA 30097
888-613-5078



Dealer
84 Lumber-Fayetteville #2307
620 Belt Road
Fayetteville, NC 28301
(910) 867-9185

Project
CL2302 CP GR
Created
January 29, 2015

Layout Name
CL2302 CP GR

Description
Cavities 1 and CL2302 CP GR

Designer
Kyle Miltzer

Revised
April 06, 2020

2nd Flr Design Method
ASD (USA)

Building Code
IBC/IRC 2015

Floor

Loads	40
Dead	10
Deflection Joist	
LL Span L	480
TL Span L	240
LL Cant 2L	360
TL Cant 2L	360
Deflection Girder	
LL Span L	360
TL Span L	240
LL Cant 2L	360
TL Cant 2L	360

Decking

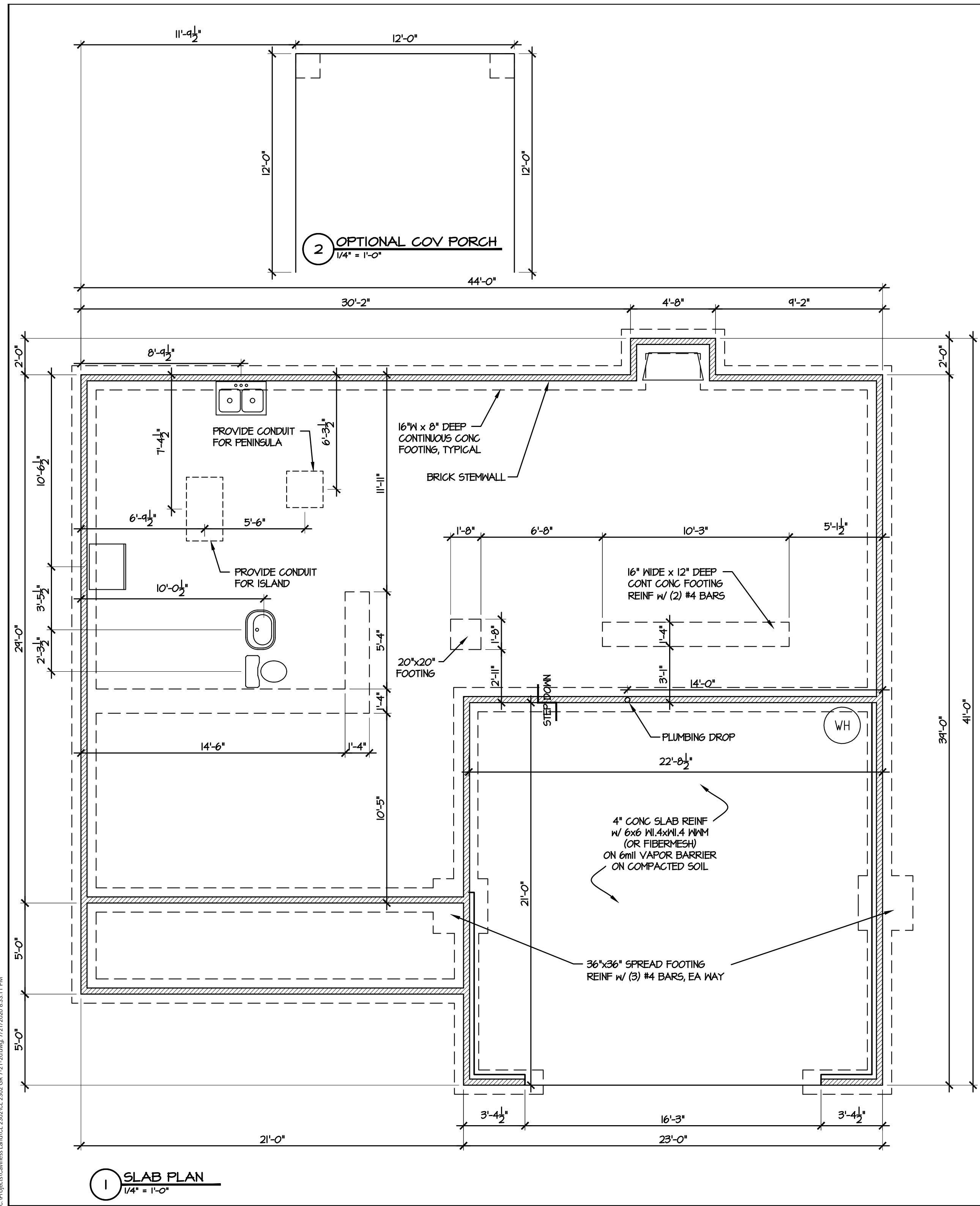
Decking	OSB
	23-32 APA Rated Stand-1-Floor

Fastener

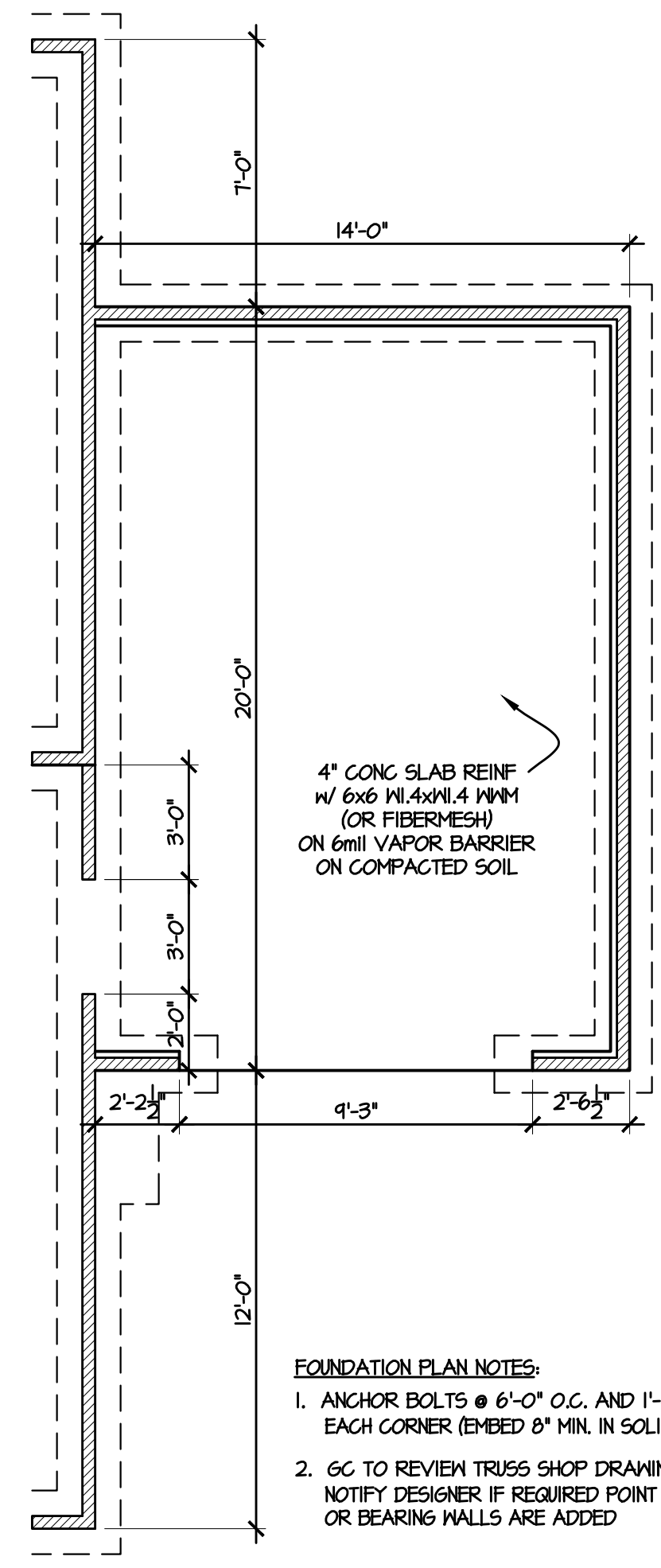
Fastener	Nails & Glued
Partition	3.5" Non-Brq Wall
Wall Opening	Partition Wall (Non-Load-Bearing)
Beam	LPI APA Rated OSB 1.125 X 14
Joist	LPI 20Flr 14
Joist	LPI-LVL 1.55I 3.5 X 9.25
Joist	LPI-LVL 1.55I 3.5 X 11.875
Joist	LPI-LVL 1.55I 3.5 X 14
Joist	LPI-LVL 2800B-2-0E 1.75 X 24
Joist	1.5 X 9.25 (Dropped)



C:\Projects\Caviness Land\CL 2302\CL 2302 GR 7-21-20.dwg 7/21/2020 8:33:11 PM

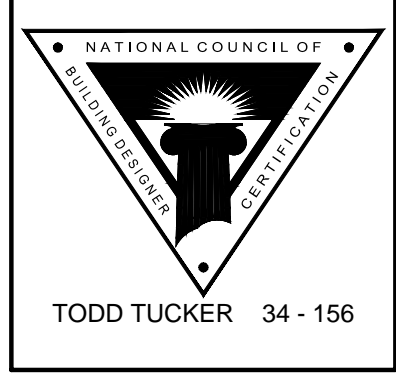
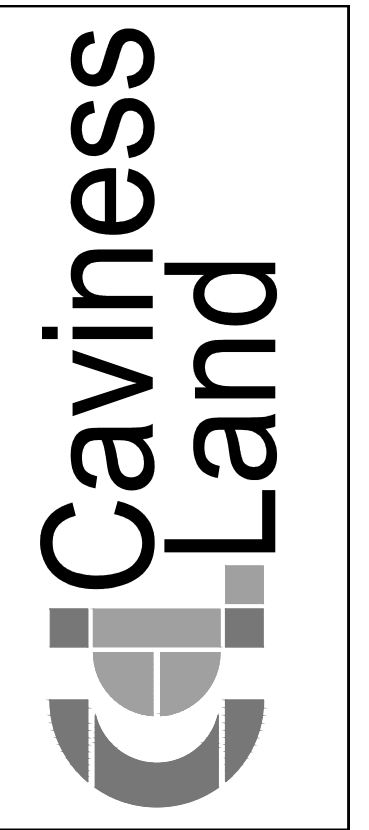


1 SLAB PLAN
1/4" = 1'-0"



3 THIRD CAR GARAGE OPTION
1/4" = 1'-0"

- FOUNDATION PLAN NOTES:
1. ANCHOR BOLTS @ 6'-0" O.C. AND 1'-0" FROM EACH CORNER (EMBED 8" MIN. IN SOLID GROUT)
 2. GC TO REVIEW TRUSS SHOP DRAWINGS & NOTIFY DESIGNER IF REQUIRED POINT LOADS OR BEARING WALLS ARE ADDED



© 2019 CavLand
1041-B Robeson St
Fayetteville, NC 28305
Office: 910-339-6330
Fax: 910-339-6333

CL 2302

STEMWALL PLAN

SCALE:
1/4" = 1'-0"

DATE:
APRIL 2020

PLAN:
CL 2302

LOT NO:

SHEET NO:
3