

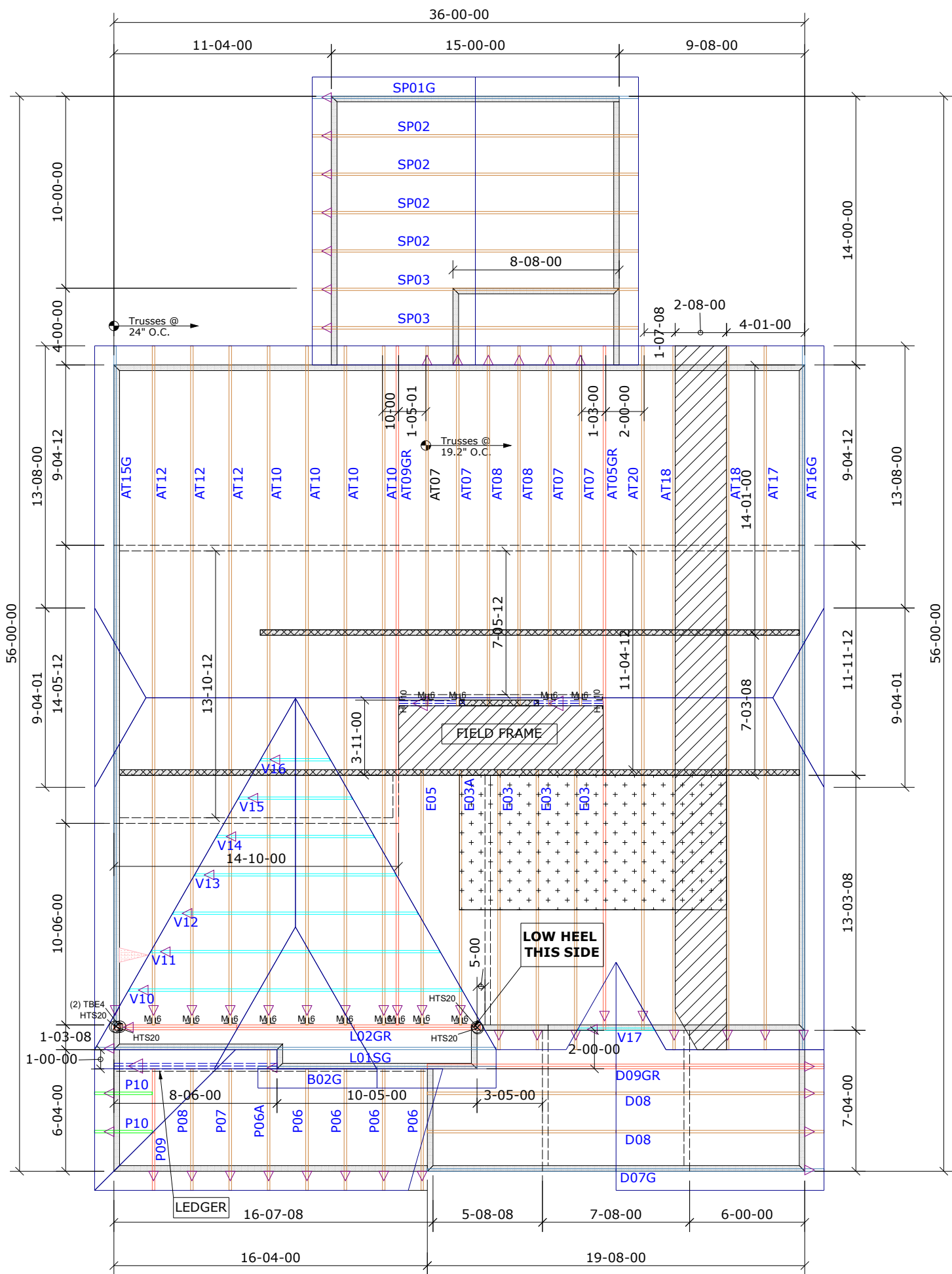
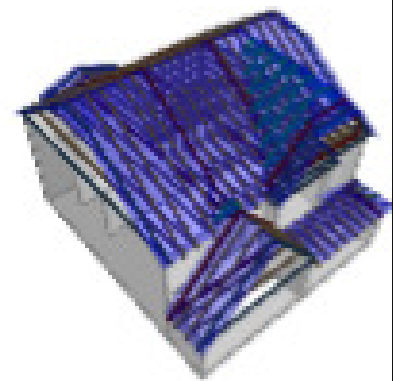
General Notes:
 - Per ANSI/TPI 1-2002 all "Truss to Wall" connections are the responsibility of the Building Designer, not the Truss Manufacturer.
 - Dimensions are Feet-Inches- Sixteenths.
 - Trusses are to be 24" o.c. unless noted otherwise (U.N.O.)
 - Trusses are not designed to support brick U.N.O.
 - Do not cut or modify trusses without first contacting Builders FirstSource.
 - Immediately contact Builders FirstSource if trusses are damaged.

Connection Notes:
 - All hangers are to be Simpson or equivalent U.N.O.
 - Use Manufacturer's specifications for all hanger connections U.N.O.
 - Use 10d x 1 1/2" Nails in hanger connections to single ply roof girder trusses.

Floor notes:
 - Shift truss as required to avoid plumbing traps.
 - Installation Contractor and/or Field Supervisor are to verify all dimensions, trap locations, and options prior to installation

Dimension Notes:
 - Drawing not to scale. Do not scale dimensions

△◁▷ LEFT END OF TRUSS AS SHOWN ON TRUSS DETAIL DRAWINGS ARE INDICATED BY TRIANGLE ICONS.



| HANGER LIST | | ALL TIE DOWNS H2.5A UNLESS NOTED | |
|-------------|---------|----------------------------------|----|
| 14 | HTU26 | M | 16 |
| 2 | HHUS410 | Hj | 10 |
| 2 | TBE4 | I | I |
| 4 | HTS20 | / | / |

| SPECIAL ITEMS LIST | |
|--------------------|--|
| | |

| MISC MATERIAL | |
|---------------|--|
| | |

| | |
|------------------------|-------------------------|
| MCKEE | |
| NELSON II | ELEV: EURO |
| ANDERSON CREEK ACADEMY | |
| --- | LOT: 1131 |
| APPWRIGHT # | |
| --- | |
| • [WALKUP] | CODE: IRC 2015 |
| • [COVERED PORCH] | LOADING: |
| • [---] | T.C.L.L. 20 PSF |
| DESIGNED BY: MTJ | T.C.D.L. 10 PSF |
| LAYOUT: EUROWUCP | B.C.L.L. 0 PSF |
| L/O DATE: 3/17/2021 | B.C.D.L. 10 PSF |
| REVISION HISTORY | |
| REV1: XX/XX/XX | M.P.H. 130 MPH |
| REV2: XX/XX/XX | EXPOSURE CATEGORY |
| REV3: XX/XX/XX | B (WOODED AREAS/OTHERS) |
| PICK TICKET: --- | JOB NO: --- |
| SALES NO: --- | ACCT NO: --- |

| HATCH LEGEND | |
|--------------|----------------|
| | ATTIC ROOM |
| | VOLUME CEILING |
| | STICK FRAMING |