

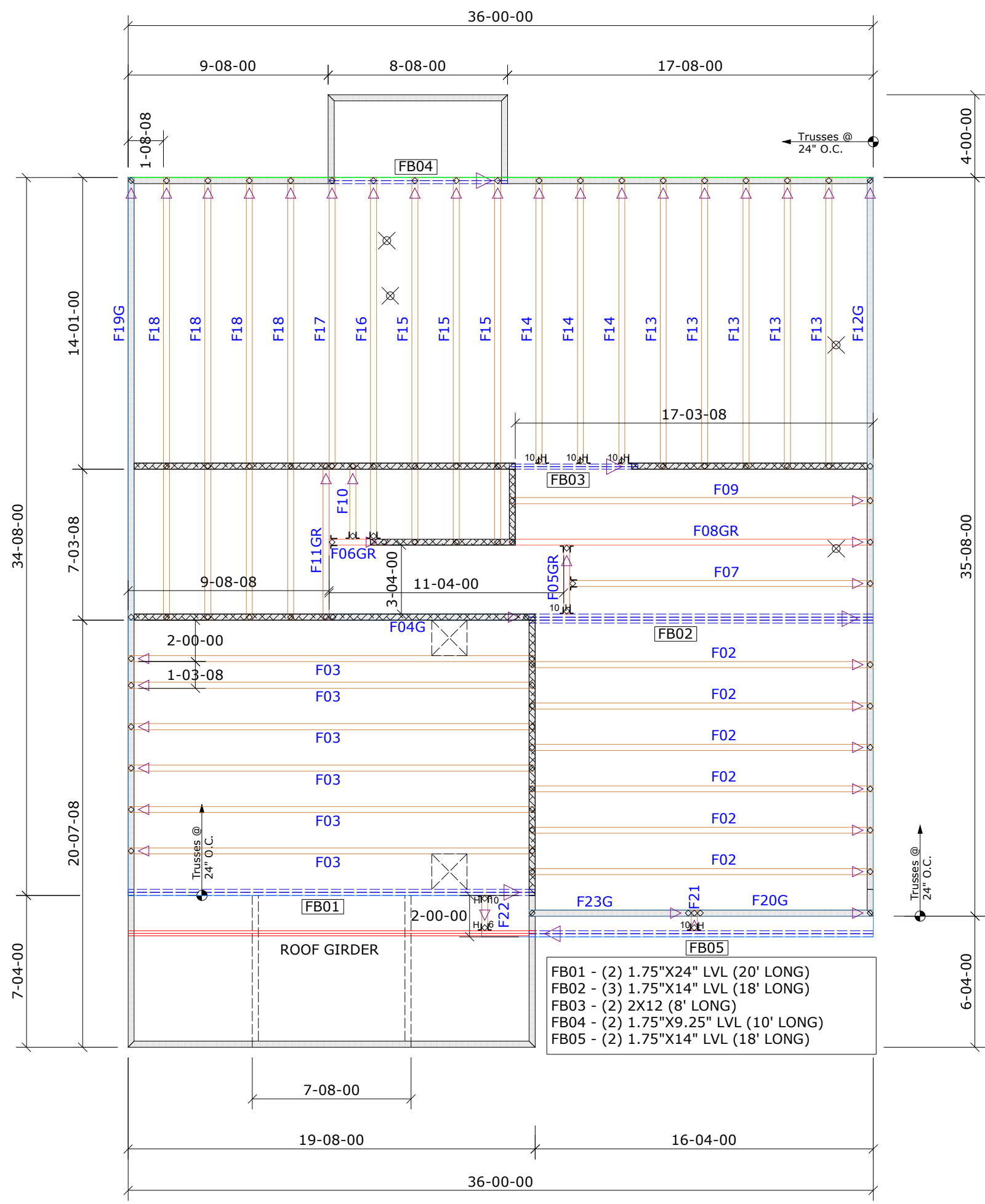
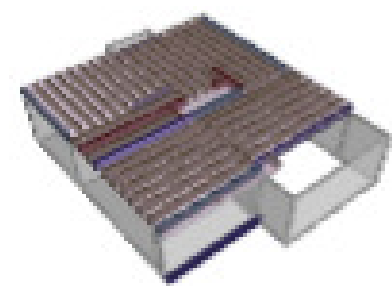
General Notes:
 - Per ANSI/TPI 1-2002 all "Truss to Wall" connections are the responsibility of the Building Designer, not the Truss Manufacturer.
 - Dimensions are Feet-Inches- Sixteenths.
 - Trusses are to be 24" o.c. unless noted otherwise (U.N.O.)
 - Trusses are not designed to support brick U.N.O.
 - Do not cut or modify trusses without first contacting Builders FirstSource.
 - Immediately contact Builders FirstSource if trusses are damaged.

Connection Notes:
 - All hangers are to be Simpson or equivalent U.N.O.
 - Use Manufacturer's specifications for all hanger connections U.N.O.
 - Use 10d x 1 1/2" Nails in hanger connections to single ply roof girder trusses.

Floor notes:
 - Shift truss as required to avoid plumbing traps.
 - Installation Contractor and/or Field Supervisor are to verify all dimensions, trap locations, and options prior to installation

Dimension Notes:
 - Drawing not to scale. Do not scale dimensions

△▽▽ LEFT END OF TRUSS AS SHOWN ON TRUSS DETAIL DRAWINGS ARE INDICATED BY TRIANGLE ICONS.



- FB01 - (2) 1.75"X24" LVL (20' LONG)
- FB02 - (3) 1.75"X14" LVL (18' LONG)
- FB03 - (2) 2X12 (8' LONG)
- FB04 - (2) 1.75"X9.25" LVL (10' LONG)
- FB05 - (2) 1.75"X14" LVL (18' LONG)

HANGER LIST		ALL TIE DOWNS H2.5A UNLESS NOTED	
5	THA422	J	L
6	HHUS410	Hj	10
1	HHUS46	Hj	6
SPECIAL ITEMS LIST			
MISC MATERIAL			
MCKEE			
NELSON III	ELEV:	EURO	
ANDERSON CREEK ACADEMY			
---	NC	LOT:	1131
APPWRIGHT #			
--			
[FLOOR]		CODE:	IRC 2015
[---]		LOADING:	
[---]		T.C.L.L.	40 PSF
DESIGNED BY:	MTJ	T.C.D.L.	10 PSF
LAYOUT:	EURO	B.C.L.L.	0 PSF
L/O DATE:	3/17/2021	B.C.D.L.	5 PSF
REVISION HISTORY		WIND:	
REV1:	XX/XX/XX	M.P.H.	115 MPH
REV2:	XX/XX/XX	EXPOSURE CATEGORY	
REV3:	XX/XX/XX	B (WOODED AREAS/OTHERS)	
PICK TICKET:	---	JOB NO.:	---
SALES NO.:	---	ACCT NO.:	---

HATCH LEGEND	
	ATTIC ROOM
	VOLUME CEILING
	STICK FRAMING