



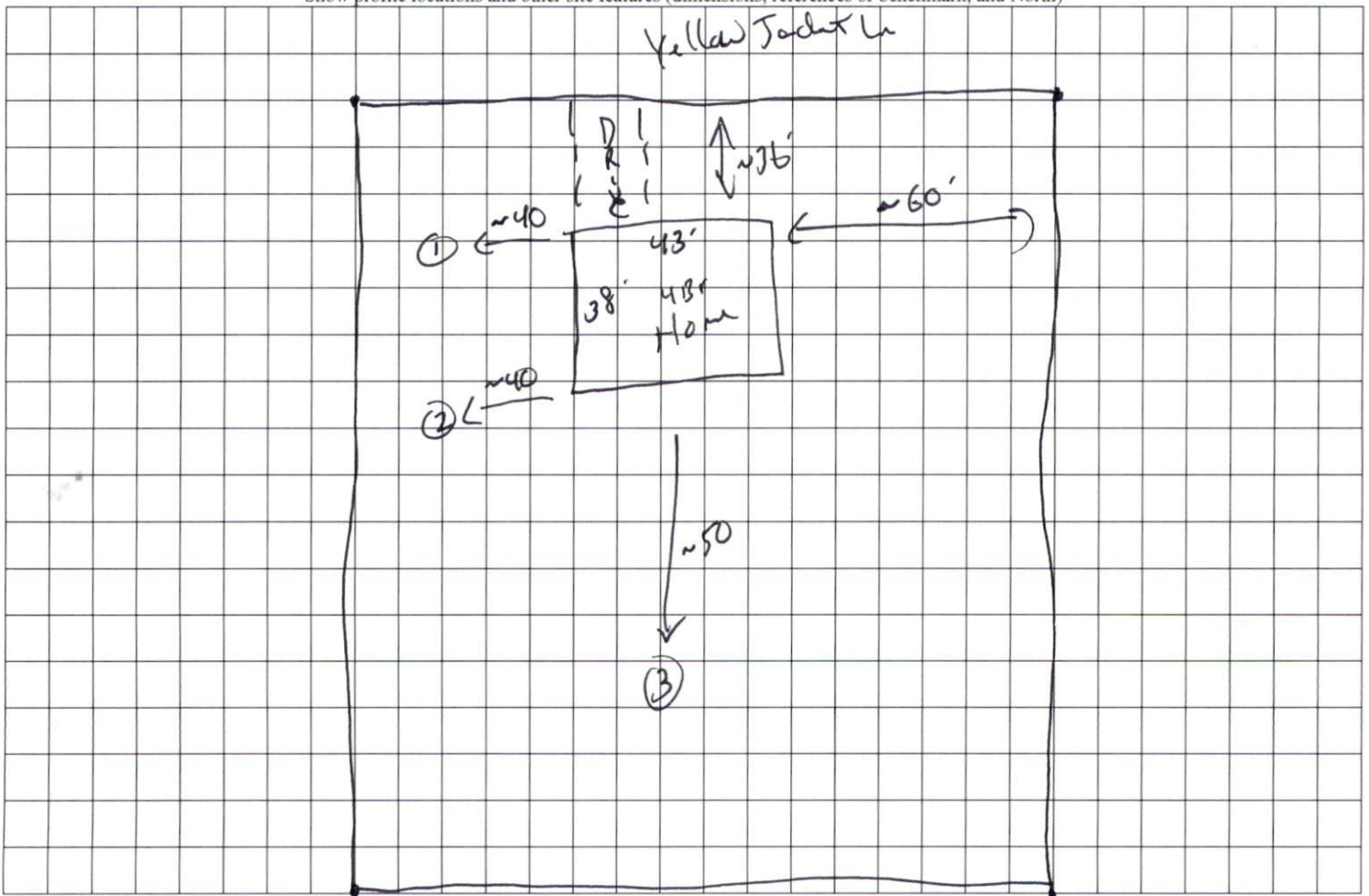
COMMENTS: \_\_\_\_\_

LANDSCAPE POSITIONS	GROUP	TEXTURES	.1955 LTAR	CONSISTENCE MOIST	WET
R-RIDGE	I	S-SAND	1.2 - 0.8		
S-SHOULDER SLOPE		LS-LOAMY SAND		VFR-VERY FRIABLE	NS-NON-STICKY
L-LINEAR SLOPE				FR-FRIABLE	SS-SLIGHTLY STICKY
FS-FOOT SLOPE	II	SL-SANDY LOAM	0.8 - 0.6	FI-FIRM	S-STICKY
N-NOSE SLOPE		L-LOAM		VFI-VERY FIRM	VS-VERY STICKY
H-HEAD SLOPE				EFI-EXTREMELY FIRM	NP-NON-PLASTIC
CC-CONCLAVE SLOPE	III	SI-SILT	0.6 - 0.3		SP-SLIGHTLY STICKY
CV-CONVEX SLOPE		SIL-SILT LOAM			P-PLASTIC
T-TERRACE		CL-CLAY LOAM			VP-VERY PLASTIC
FP-FLOOD PLAN		SCL-SANDY CLAY LOAM			
	IV	SIC-SILTY CLAY	0.4 - 0.1		
		C-CLAY			
		SC-SANDY CLAY			

STRUCTURE  
 SG-SINGLE GRAIN  
 M- MASSIVE  
 CR-CRUMB  
 GR-GRANULAR  
 SBK-SUBANGULAR BLOCKY  
 ABK-ANGULAR BLOCKY  
 PL-PLATY  
 PR-PRISMATIC

MINERALOGY  
 SLIGHTLY EXPANSIVE  
 EXPANSIVE

Show profile locations and other site features (dimensions, references or benchmark, and North)



← Dove rd →