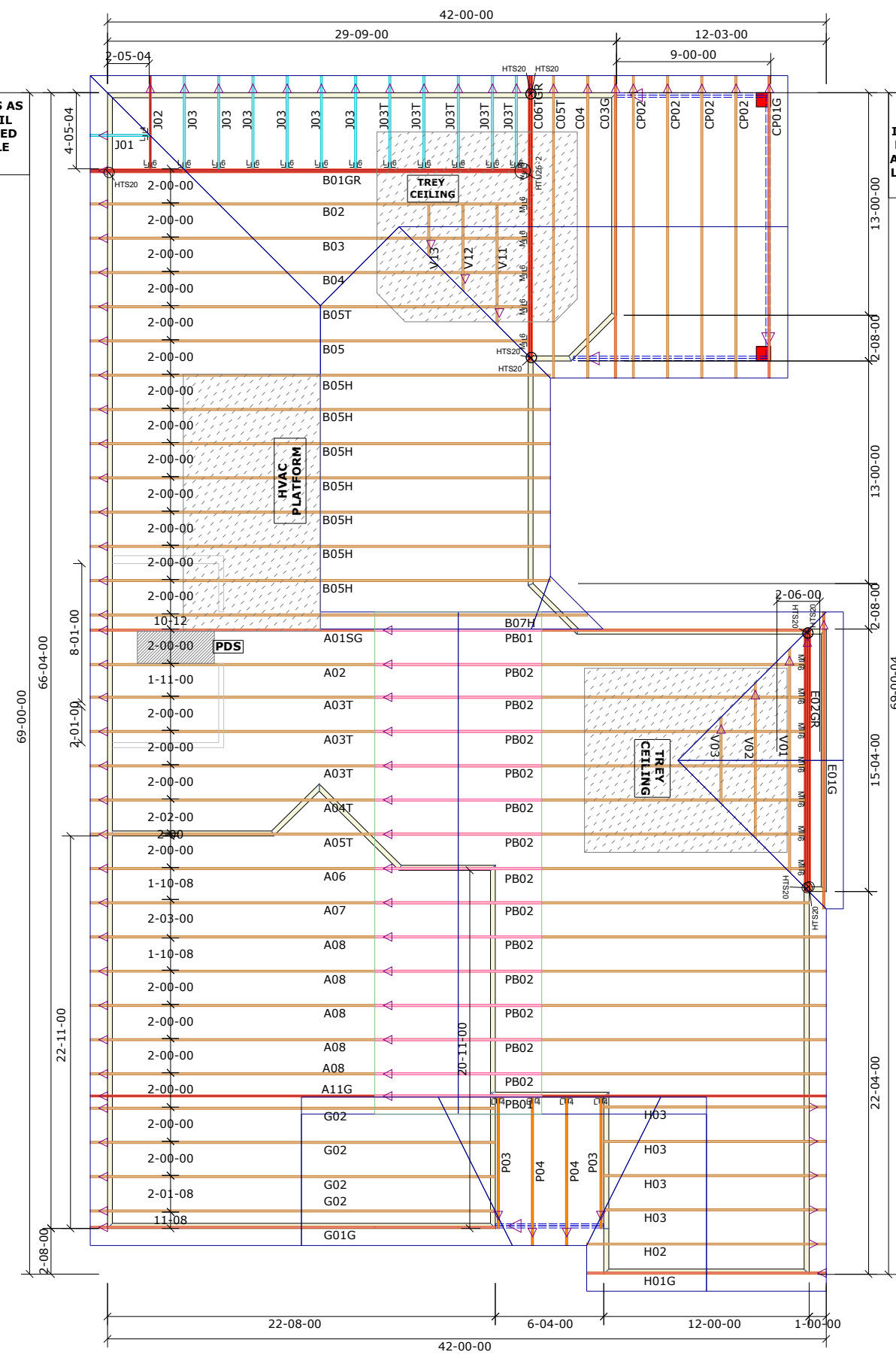


NOTE: LEFT END OF TRUSS AS SHOWN ON TRUSS DETAIL DRAWINGS ARE INDICATED ON LAYOUT BY TRIANGLE ICONS

SPACE TRUSSES 2' O.C. UNLESS A WIDE P.D.S. IS GOING TO BE INSTALLED. IF WIDE P.D.S. IS USED, FOLLOW SPECIAL TRUSS SPACING AS NOTED ON LAYOUT & ATTACH 2X4 LEDGERS TO TOP & BOTTOM CHORDS W/12d NAILS @ 16" O.C.



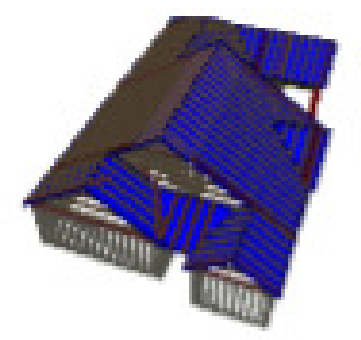
General Notes:
 - Per ANSI/TPI 1-2002 all "Truss to Wall" connections are the responsibility of the Building Designer, not the Truss Manufacturer.

- Dimensions are Feet-Inches- Sixteenths.
 - Trusses are to be 24" o.c. unless noted otherwise (U.N.O.)
 - Trusses are not designed to support brick U.N.O.
 - Do not cut or modify trusses without first contacting Builders FirstSource.
 - Immediately contact Builders FirstSource if trusses are damaged.

Connection Notes:
 - All hangers are to be Simpson or equivalent U.N.O.
 - Use Manufacturer's specifications for all hanger connections U.N.O.
 - Use 10d x 1 1/2" Nails in hanger connections to single ply roof girder trusses.

Floor Notes:
 - Shift truss as required to avoid plumbing traps.
 - Installation Contractor and/or Field Supervisor are to verify all dimensions, trap locations, and options prior to installation

Dimension Notes:
 - Drawing not to scale. Do not scale dimensions



Hanger List		All Tie Downs H2.5T Unless noted	
5	LUS24	U/L4	Special Items List
12	LUS26	U/L6	
12	HTU26	M/L6	
1	HTU26-2	w/L6	
9	HTS20	/	

Misc Material

McKee		
Portico 2020	Elev:	Classic
Carriage Glen/98 Blenwood Court		
Cumberland	NC	Lot: 1011
Lot 1011/Covered Porchh/Garage Left		
Appwright #		
Permit		
Code: IRC 2015		
Loading:		
T.C.L.L. 20		
T.C.D.L. 10		
B.C.L.L. 0		
B.C.D.L. 10		
Designed By: CFC		
Layout: PCLCP-L-130		
L/O Date: 02/26/2021		
Revision History		
Wind:		
Rev1:	xx/xx/xx	M.P.H. 130
Rev2:	xx/xx/xx	Exposure Category
Rev3:	xx/xx/xx	B (Wooded areas/other)
Pick Ticket: ---		
Sales No: ---		
Job No: ---		
Acct No: ---		

Hatch Legend	
	Attic Room
	Volume Ceiling
	Stick Framing