

VENTING SCHEDULE

| | |
|-------------|-------------------|
| Range Hoods | Vent Through Roof |
| Bath Fans | Vent to Exterior |
| Water Vent | Vent to Exterior |

INSULATION SCHEDULE

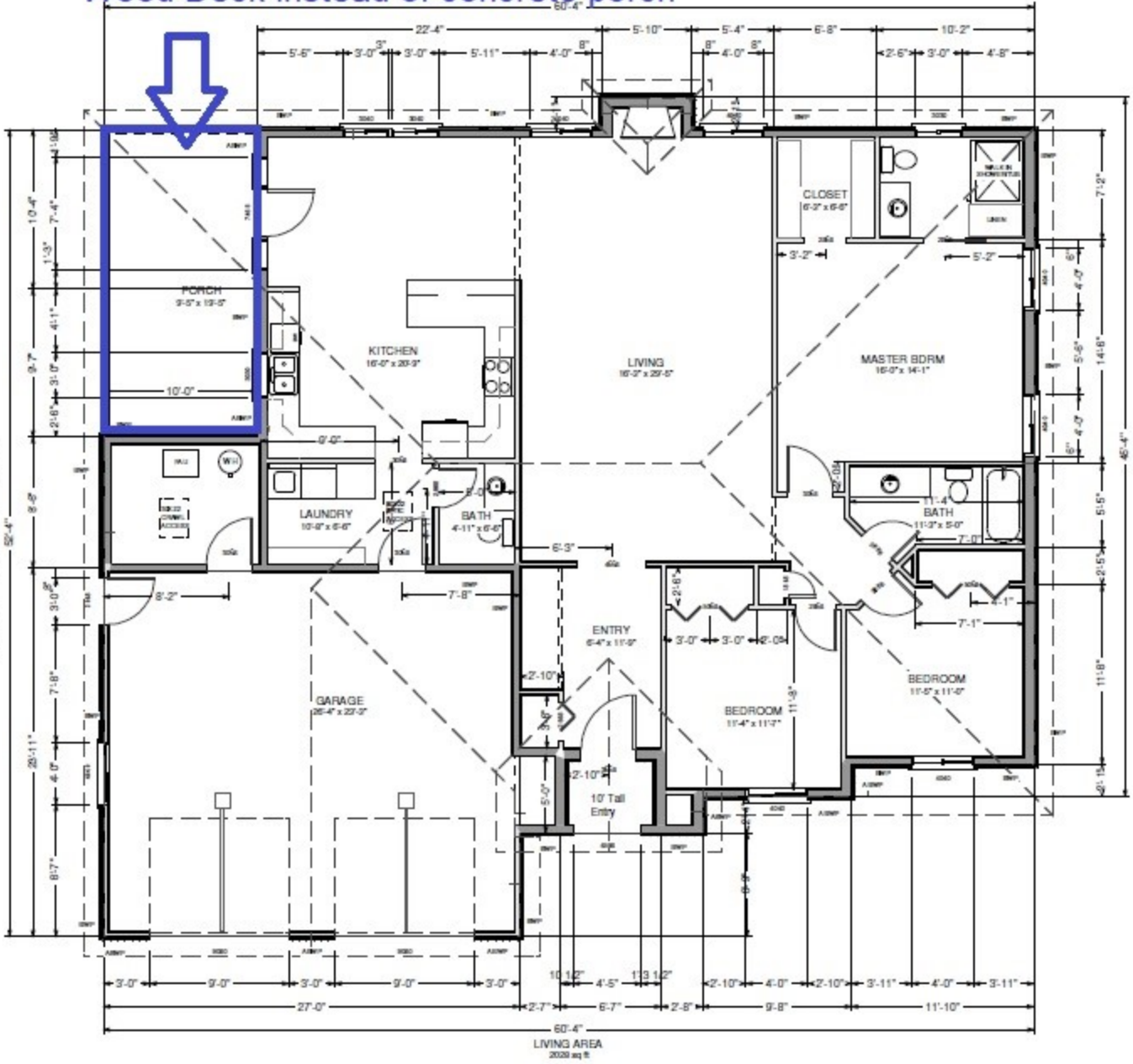
| | |
|---------------------------|----------|
| Ceilings | R-38 Min |
| Wall above grade | R-19 Min |
| Wall interior below grade | R-13 Min |

| WINDOW SCHEDULE | | | | |
|-----------------|-----|------|------------|--------------|
| NUMBER | QTY | SIZE | DIMENSIONS | DESCRIPTION |
| W01 | 1 | 3030 | 36"X36" | DOUBLE HUNG |
| W02 | 1 | 3030 | 36"X36" | LEFT SLIDING |
| W03 | 2 | 3040 | 36"X48" | LEFT SLIDING |
| W04 | 7 | 4040 | 48"X48" | LEFT SLIDING |
| W05 | 1 | 4598 | 53"X118" | MULLED UNIT |
| W06 | 1 | 7488 | 88"X80" | MULLED UNIT |

| DOOR SCHEDULE | | | |
|---------------|------|--------------------|---|
| QTY | SIZE | DIMENSIONS | DESCRIPTION |
| 1 | 9080 | 108X98" | GARAGE 4-PANEL GARAGE DOOR |
| 1 | 1868 | 20X80X1 3/8" | 3 PANEL DOOR - COLOR BRITE WHITE |
| 1 | 2868 | 30X80" | BIFOLD |
| 1 | 2668 | 30X80X1 3/8" | 3 PANEL DOOR - COLOR BRITE WHITE |
| 1 | 2968 | 32X80X1 3/8" | POCKET 3 PANEL DOOR - COLOR BRITE WHITE |
| 1 | 3868 | 42X80X1 3/4" | 6-PANEL |
| 1 | 3068 | 36X80X1 3/4" | EXT. 3 PANEL DOOR - COLOR BRITE WHITE |
| 1 | 5068 | 30X80" | BIFOLD |
| 1 | 3068 | 36X80X1 3/8" | 3 PANEL DOOR - COLOR BRITE WHITE |
| 1 | 3068 | 36X80X1 3/4" | EXT. 6-PANEL |
| 1 | 2868 | 31 13'18X80X1 3/8" | 3 PANEL DOOR - COLOR BRITE WHITE |
| 1 | 2868 | 32X80X1 3/8" | 3 PANEL DOOR - COLOR BRITE WHITE |

| ELECTRICAL SCHEDULE | |
|---------------------|--|
| QTY | DESCRIPTION |
| 2 | 220V |
| 53 | DUPLEX |
| 2 | DUPLEX (WEATHERPROOF) - COLOR LIGHT GRAY (MATTE) |
| 3 | EXHAUST |
| 3 | GFCI |
| 3 | HALF-CONE - LIGHTING GREY |
| 26 | HALF-DOME LIGHT - LIGHTING GREY |
| 5 | PORCH LANTERN |
| 14 | SINGLE POLE |
| 4 | SMOKE DETECTOR |
| 16 | THREE WAY |

Wood Deck instead of concrete porch



MAIN FLOOR PLAN
SCALE: 1/8"=1'